

City and County of San Francisco



Juvenile Probation Department

Monthly Report for October 2013

Presented to the Juvenile Probation Commission

November 13th, 2013

Allen A. Nance
Chief Probation Officer

Prepared by Jose Luis Perla
Information Technology Director
(415) 753-7686
jose.perla@sfgov.org

Table of Contents

Section I Summary Reports

Juvenile Hall, Log Cabin Ranch Summary Statistics	1
Probation Services Summary and California Youth Authority Statistics.....	2
Active Cases by Units.....	3

Section II Current Month General Detail

Probation Referrals, Juvenile Admissions And Average Daily Population	4
Juvenile Hall Admissions and Average Daily Population.....	5
Commitments to out-of-home placement	6
Commitments to California Youth Authority	7
Log Cabin Ranch Admissions and Average Daily Population.....	8
Probation Referrals	9
Juvenile Hall And Log Cabin Ranch Incident Report	10
Bay Area Resident Juvenile Hall Comparison	11
Juvenile Hall Admissions	12
Juvenile Hall Detainees by Detention Reason.....	13
Juvenile Hall Average Daily Population by Rated Capacity	14
Juvenile Hall Average Length of Stay	15

Section III Demographics

Juvenile Hall Detainees by Sex and Race/Ethnic Origin.....	16
Juvenile Hall Detainees by Age.....	17
Juvenile Hall Detainees by Age and Sex	18
Juvenile Hall Detainees by Geographic Residence of Youth.....	19
Juvenile Hall Detainees by Race/Ethnic Origin and Sex.....	20

Section IV
Historical Information

2004-2006 Probation Referrals21
2004-2006 Juvenile Hall Admissions22
2004-2006 Juvenile Hall Average Daily Population23



Section I

Summary Reports

Summary Report for the Month of October 2013

Juvenile Hall	<i>September 2012</i>	<i>September 2013</i>	<i>October 2012</i>	<i>October 2013</i>	<i>YTD 2012</i>	<i>YTD 2013</i>
Admissions	63	55	82	63	768	759
Average Daily Population	72	76	72	76	73	77
Average Length of Stay (Releases)	27.79	22.06	28.55	33.39	28.28	28.57
Average Length of Stay (In Custody)	63.08	70.63	64.03	71.12	67.40	62.39
Releases	62	63	87	61	778	910
Log Cabin Ranch						
Admissions:						
First Time Commitments	0	2	2	2	27	18
Recommitments	0	0	0	0	0	0
<i>Total</i>	0	2	2	2	27	18
Releases:						
Graduated	0	0	0	0	1	0
Escape	0	0	5	0	6	1
Other releases	2	0	1	1	27	17
<i>Total</i>	2	0	6	1	34	18
Average Daily Population	23	10	21	12	19	14

Summary Report for the Month of October 2013

Probation Services	<i>September 2013</i>	<i>October 2013</i>	<i>Year To Date 2013</i>
Probation Referrals	94	134	1359
Total Petitions including violation of probation	56	58	665
Selected Court Dispositions:			
California Youth Authority	0	0	3
Log Cabin Ranch	2	3	19
Out of Home Placement	6	4	80
Ward Probation	21	9	192
Non-Ward Probation (725a WI)	4	2	36
Informal Probation (654 WI)	10	2	64
Violation of Probation Petitions Filed	13	9	93
California Youth Authority Monthly Count San Francisco County Juvenile Court Cases October 31st, 2013			
Category	Institutions	Parole	
Males			
White	0	0	
Hispanic	2	0	
African American	4	0	
Asian	1	0	
Native American	0	0	
Filipino	0	0	
Pacific Islander	0	0	
Other	0	0	
Total	7	0	
Females			
White	0	0	
Hispanic	0	0	
African American	0	0	
Asian	0	0	
Native American	0	0	
Filipino	0	0	
Pacific Islander	0	0	
Other	0	0	
Total	0	0	
Grand Total	7	0	

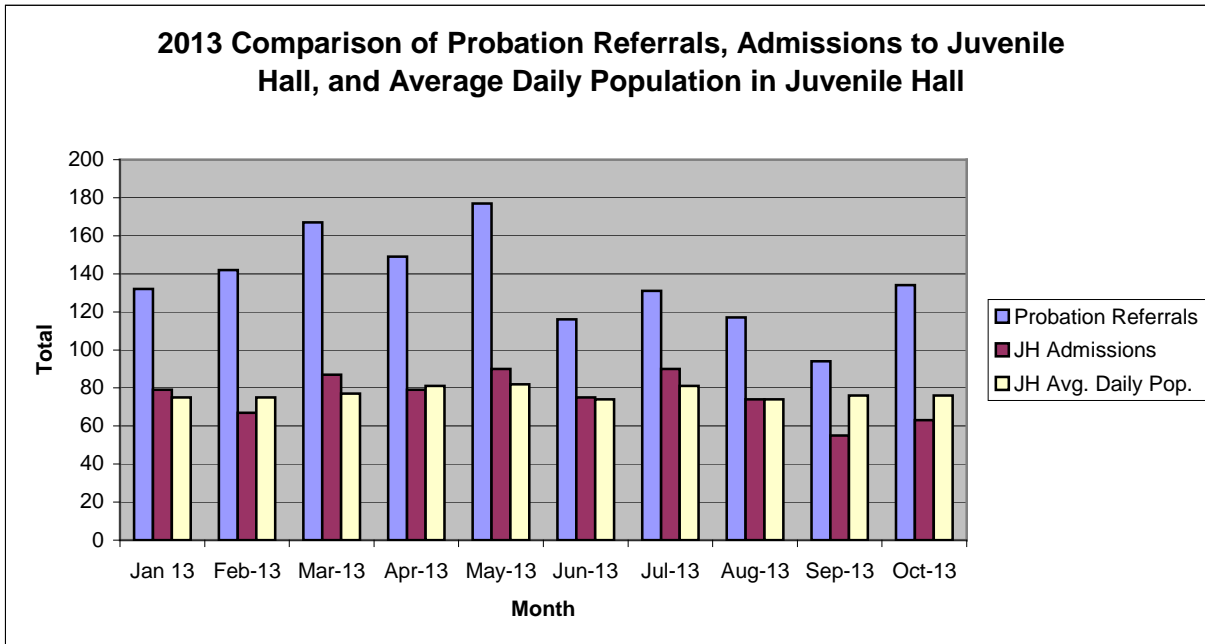
Summary Report for the Month of October 2013

Probation Services			
Active Cases by Units	September 2013	October 2013	October Average # Youth by PO
CARC	122	123	123
Intake Green (Custody Screening Investigation)	76	74	11
Intake Gold (Probation Services 1)	139	140	20
Family Integrated Treatment Services (FITS) PS2	127	123	18
Serious Offenders Program (Probation Services 3)	152	138	20
Out-of-home Placement (Probation Services 4)	151	150	25
Juvenile Collaborative Re-entry Unit (JCRU)	44	44	15
<i>Total</i>	811	792	33
Total Active Intake Cases	358	357	
Total Probation/Supervision Cases	453	435	
<i>Total</i>	811	792	

Section II
Current Month
General Detail

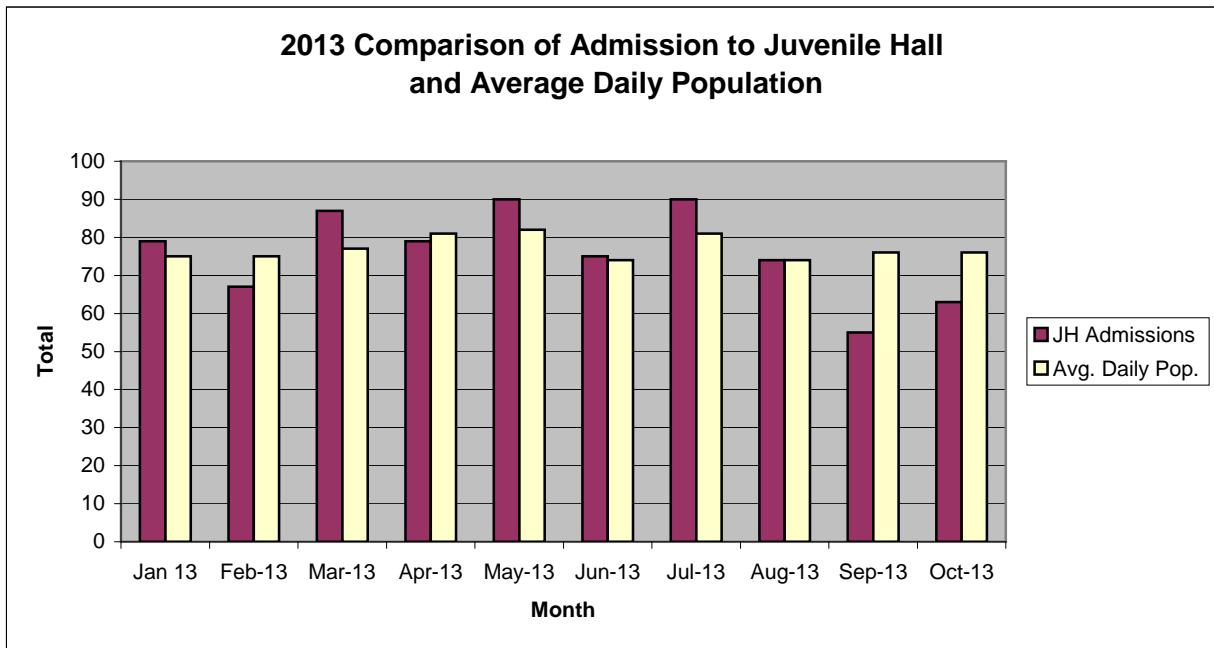
San Francisco Juvenile Probation Department

	Jan 13	Feb-13	Mar-13	Apr-13	May-13	Jun-13	Jul-13	Aug-13	Sep-13	Oct-13	Nov-13	Dec-13
Probation Referrals	132	142	167	149	177	116	131	117	94	134		
JH Admissions	79	67	87	79	90	75	90	74	55	63		
JH Avg. Daily Pop.	75	75	77	81	82	74	81	74	76	76		



San Francisco Juvenile Probation Department

	Jan 13	Feb-13	Mar-13	Apr-13	May-13	Jun-13	Jul-13	Aug-13	Sep-13	Oct-13	Nov-13	Dec-13
JH Admissions	79	67	87	79	90	75	90	74	55	63		
Avg. Daily Pop.	75	75	77	81	82	74	81	74	76	76		

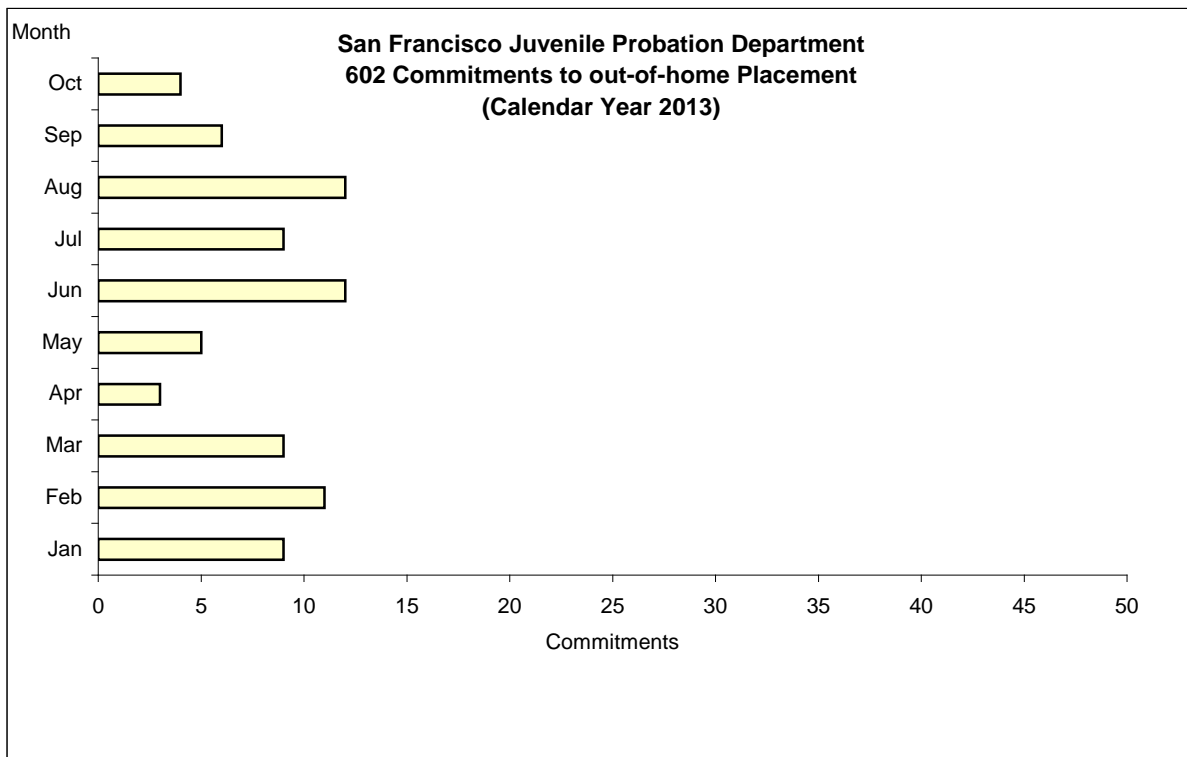


Out-of-Home Placement¹

Commitments of 602's

Calendar Year 2013

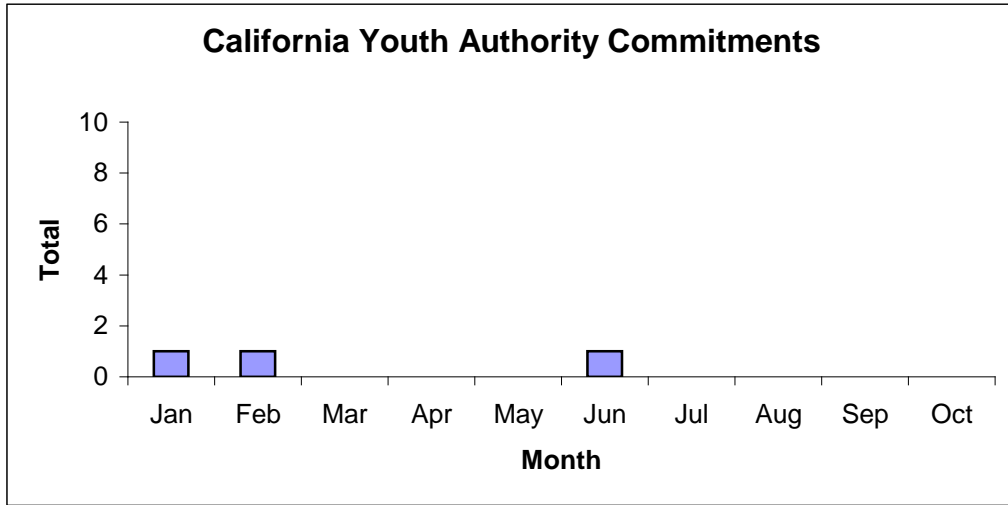
Commitments	Jan	Feb	Mar	Apr	May	Jun	Jul	Aug	Sep	Oct	Nov	Dec	Total
2013	9	11	9	3	5	12	9	12	6	4			80



¹ This report is based on 602 Commitments to out-of-home placements. If there is a 601 commitment, it will show as a footnote here. Figures are regularly updated to include reports from previous reporting periods.

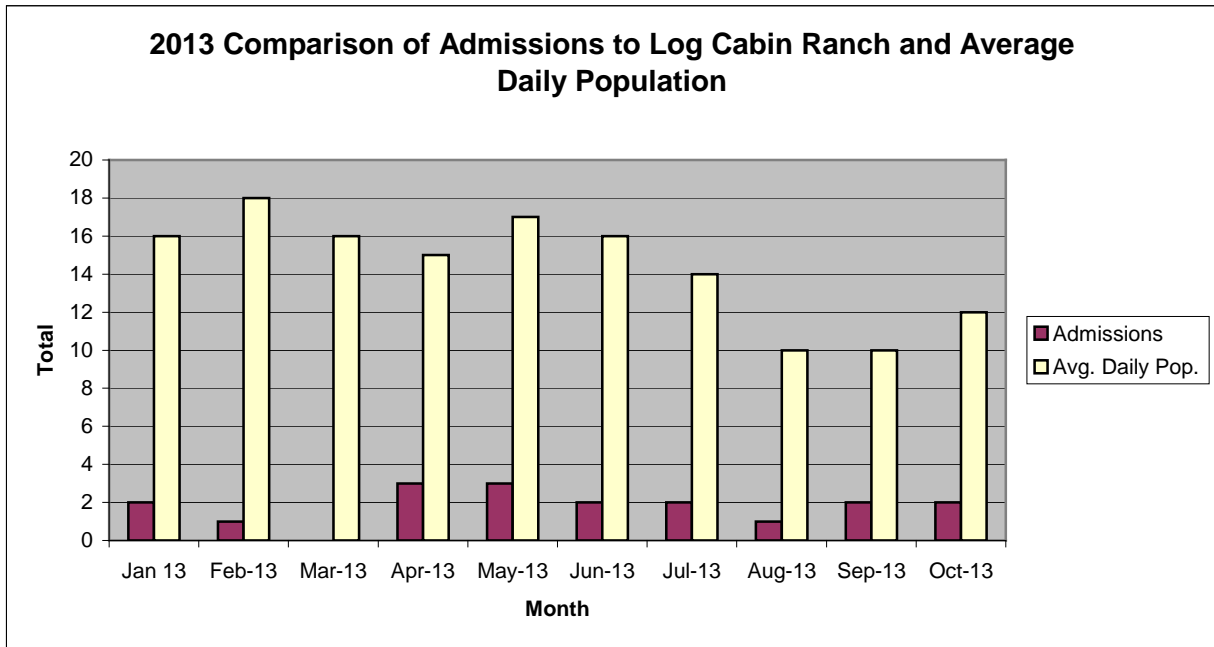
California Youth Authority
Commitments
(Calendar Year 2013)

Commitments	Jan	Feb	Mar	Apr	May	Jun	Jul	Aug	Sep	Oct	Nov	Dec	Total
2013	1	1	0	0	0	1	0	0	0	0			3



San Francisco Juvenile Probation Department

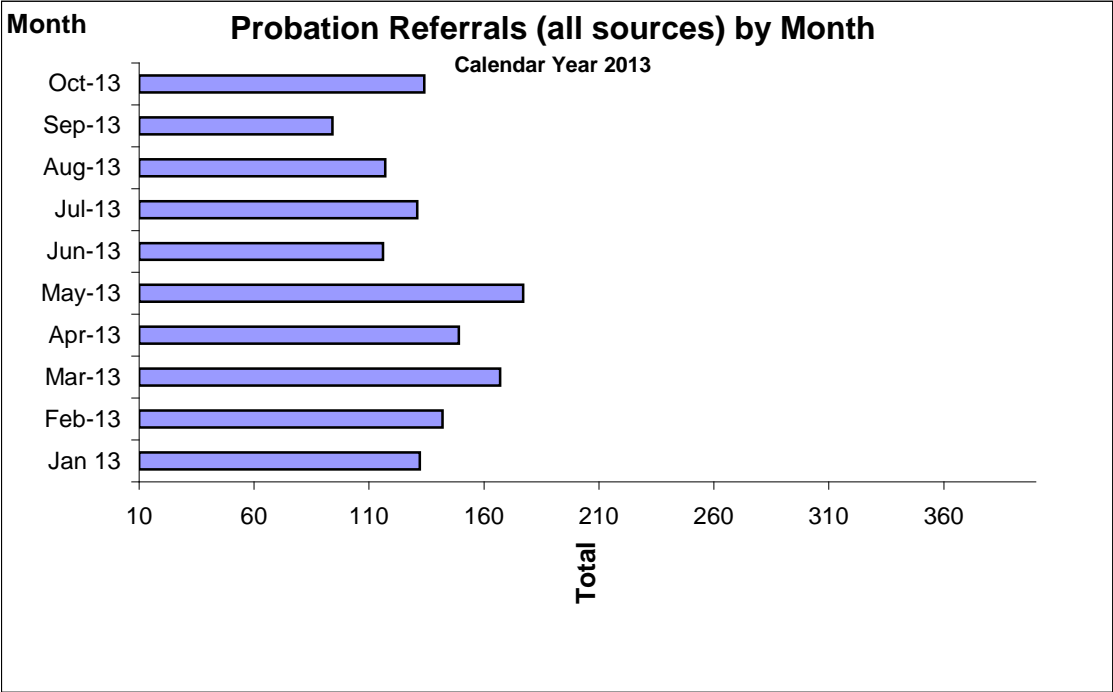
	Jan 13	Feb-13	Mar-13	Apr-13	May-13	Jun-13	Jul-13	Aug-13	Sep-13	Oct-13	Nov-13	Dec-13
Admissions	2	1	0	3	3	2	2	1	2	2		
Avg. Daily Pop.	16	18	16	15	17	16	14	10	10	12		



Probation Referrals by Month Calendar Year 2013

Probation Referrals (all sources) by Month (602 W&I)

Jan 13	132
Feb-13	142
Mar-13	167
Apr-13	149
May-13	177
Jun-13	116
Jul-13	131
Aug-13	117
Sep-13	94
Oct-13	134
Nov-13	
Dec-13	

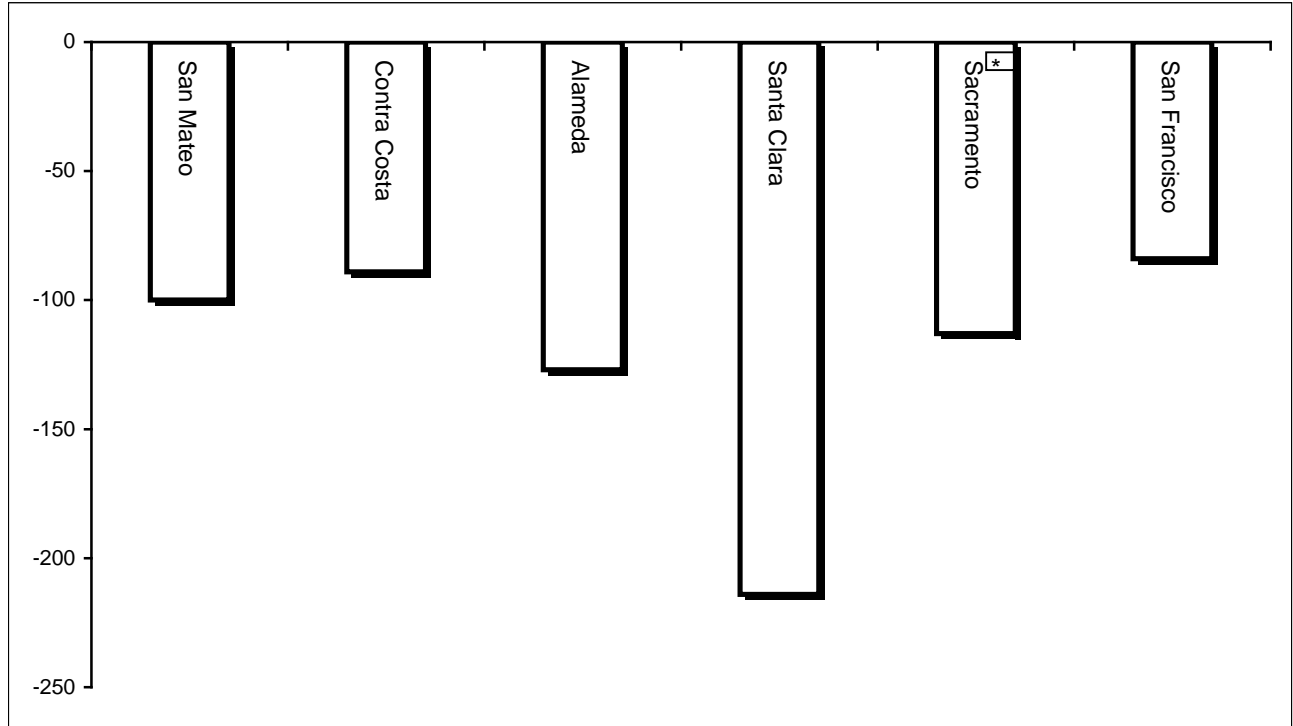


San Francisco Juvenile Probation Department
 Monthly Incident Report Form
 October 2013

Juvenile Hall	Battery on Staff	Injury to Staff Due to Restrain of Minor	Fights Minor on Minor	Battery Youth on Youth	Attempted Escape	AWOL	Attempted Suicide	Serious Contraband (Weapon illegal drug)	Use of Force	Self Inflicted Injuries
	1	0	4	4	0	0	0	5	1	1
	Assaults Minor on Minor	Battery on Staff with Injury	Fire	Fight with Injury	Battery Youth on Youth with Injury	Escape	Death	Suicide	Major Property Destruction	Use of Restraints (Handcuffs/ Shackles)
0	0	0	0	0	0	0	0	0	4	1
Log Cabin Ranch	Battery on Staff	Injury to Staff due to Restraint of Minor	Fight	Battery Youth on Youth	Attempted Escape	AWOL	Attempted Suicide	Serious Contraband	Battery on Staff with Injury	Fire
	0	0	0	0	0	0	0	0	0	0
	Fight With Injury	Battery Youth on Youth with Injury	Escape	Death	Suicide	Major Property Destruction				
0	0	0	0	0	0	0				

Bay Area Resident Juvenile Hall Comparison Over/Under Capacity

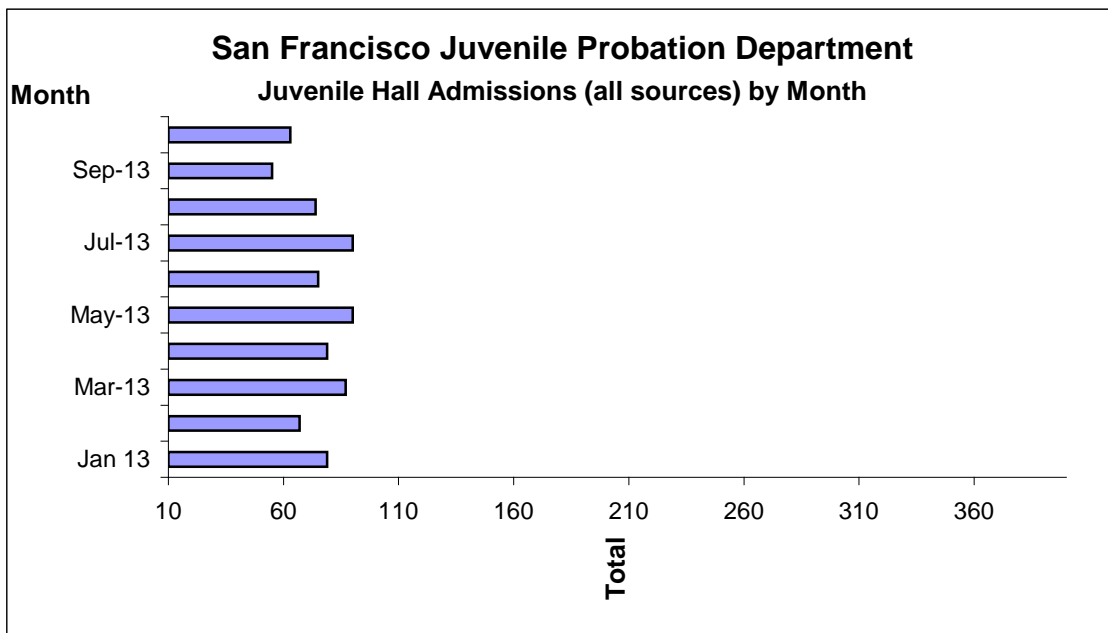
November 7th, 2013



	Rated Capacity	Actual	Over/Under Capacity
San Mateo	180	80	-100
Contra Costa	240	151	-89
Alameda	280	153	-127
Santa Clara	360	146	-214
Sacramento	308	195	-113
San Francisco	150	66	-84

Juvenile Hall Admissions by Month Calendar Year 2013

Jan 13	79
Feb-13	67
Mar-13	87
Apr-13	79
May-13	90
Jun-13	75
Jul-13	90
Aug-13	74
Sep-13	55
Oct-13	63
Nov-13	
Dec-13	

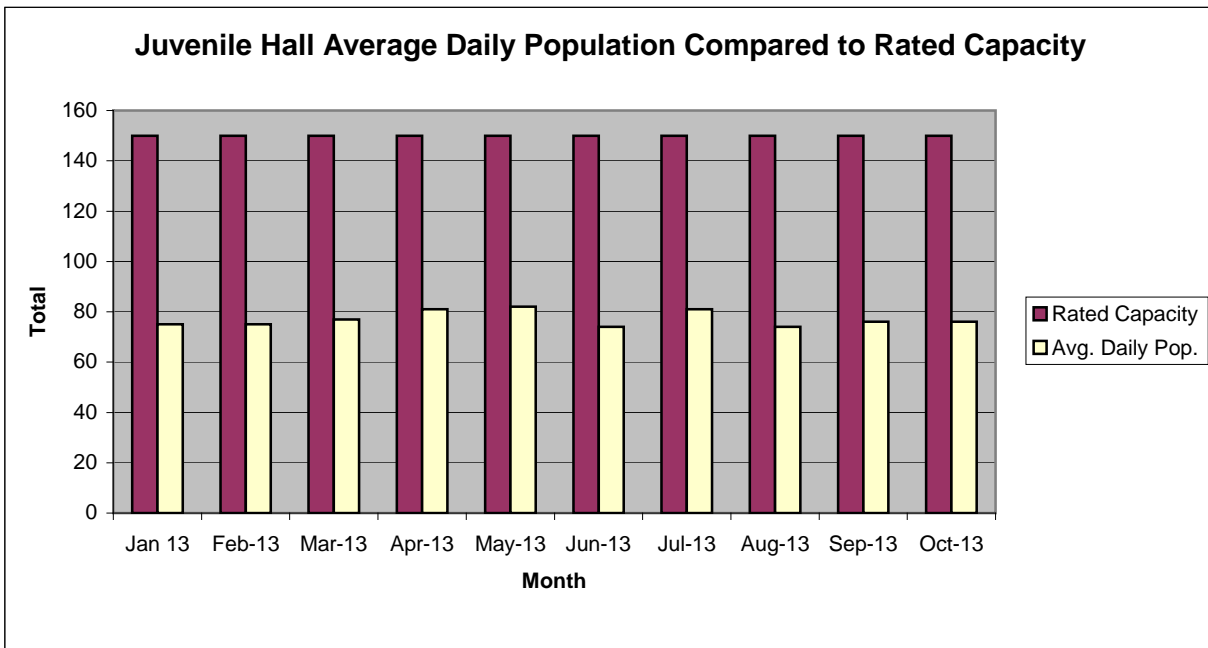


Characteristics of Juvenile Hall Detainees on October 31st, 2013

Referral Reason	MF*	Literal	Count	%	
187 (A) PC	F	MURDER:FIRST DEGREE	1	1.32%	
187 (A) PC	F	MURDER	3	3.95%	
664 /187 (A) PC	F	ATTEMPTED MURDER	2	2.63%	
211 PC	F	ROBBERY	13	17.11%	
211 PC	F	ROBBERY:FIRST DEGREE	2	2.63%	
11352 (A) HS	F	TRANSPORT/SELL NARCOTIC/CONTROLLED SUBSTANCE	3	3.95%	
459 PC	F	BURGLARY	2	2.63%	
245 (A)(2) PC	F	ASSAULT WITH FIREARM ON PERSON	1	1.32%	
245 (A)(1) PC	F	ASSAULT W/DEADLY WEAPON:NOT F/ARM	2	2.63%	
245 (A)(4) PC	F	ADW WITH FORCE:POSSIBLE GBI	1	1.32%	
285 PC	F	INCEST	1	1.32%	
25400 (C)(2) PC	F	CARRY CONCEALED STOLEN WEAPON	1	1.32%	
25400 (C)(4) PC	F	CARRY CONCEALED WEAPON PROHIBITED CLASS/UNLAWFUL POSSESSION	1	1.32%	
242 PC	F	BATTERY	1	1.32%	
422 PC	F	THREATEN CRIME W/INTENT TO TERRORIZE	2	2.63%	
487 (C) PC	F	GRAND THEFT FROM PERSON	2	2.63%	
25400 (A)(2) PC	F	CARRY CONCEALED WEAPON ON PERSON	2	2.63%	
21310 PC	F	CARRY CONCEALED DIRK OR DAGGER	1	1.32%	
25850 (C)(2) PC	F	CARRY STOLEN LOADED FIREARM	2	2.63%	
594 (B)(1) PC	F	VANDALISM (\$400 OR MORE)	1	1.32%	
148 (A)(1) PC	M	OBSTRUCT/RESIST/ETC PUBLIC/PEACE OFFICER/EMERGENCY MED TECH	3	3.95%	
460 (B) PC	M	BURGLARY:SECOND DEGREE	1	1.32%	
242 PC	M	BATTERY	2	2.63%	
777 (A)(2) WI	M	FAIL TO OBEY ORDER OF JUVENILE COURT:602 WI	6	7.89%	
628.1 WI	M	VIOLATION(S) OF HOME SUPERVISION CONDITION	4	5.26%	
737 WI	M	CHANGE OF PLACEMENT/PLACEMENT FAILURE	3	3.95%	
WRNT602	X	WARRANT	9	11.84%	
CTORD 602	X	COURT ORDER	4	5.26%	
*M=Misdemeanor; F=Felony			Total	76	100.00%

San Francisco Juvenile Probation Department

	Jan 13	Feb-13	Mar-13	Apr-13	May-13	Jun-13	Jul-13	Aug-13	Sep-13	Oct-13	Nov-13	Dec-13
Rated Capacity	150	150	150	150	150	150	150	150	150	150	150	150
Avg. Daily Pop.	75	75	77	81	82	74	81	74	76	76		



Juvenile Hall Average Length of Stay

For the Month of October 2013

¹Released

Range of Days	<i>1-10 days</i>	<i>11-20 days</i>	<i>21-30 days</i>	<i>30 or more days</i>	Total
# of Youth Released	26	10	5	20	61
% of Population	42.62%	16.39%	8.20%	32.79%	100%
# of Days	105	141	130	1,661	2,037
% of Total Days	5.15%	6.92%	6.38%	81.54%	100%
Average Length of Stay	4.04	14.10	26.00	83.05	33.39

²In Custody

Range of Days	<i>1-10 days</i>	<i>11-20 days</i>	<i>21-30 days</i>	<i>30 or more days</i>	Total
# of Youth Detained	14	12	7	43	76
% of Population	18.42%	15.79%	9.21%	56.58%	100%
# of Days	78	175	177	4,975	5,405
% of Total Days	1.44%	3.24%	3.27%	92.04%	100%
Average Length of Stay	5.57	14.58	25.29	115.70	71.12

Notes: Less than one day of stay is calculated as one day.

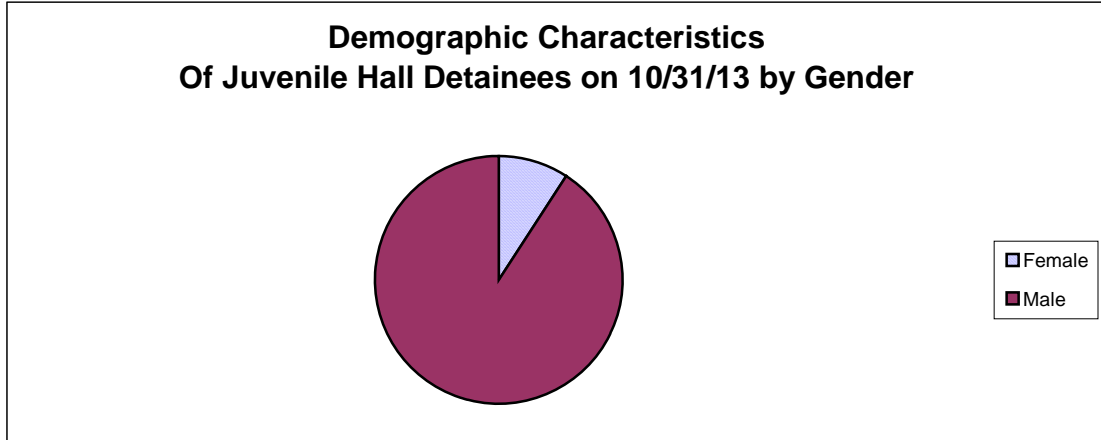
¹Length of stay is calculated according to release date for those who are released.

²For those still in custody, length of stay is calculated at the last day of the month.

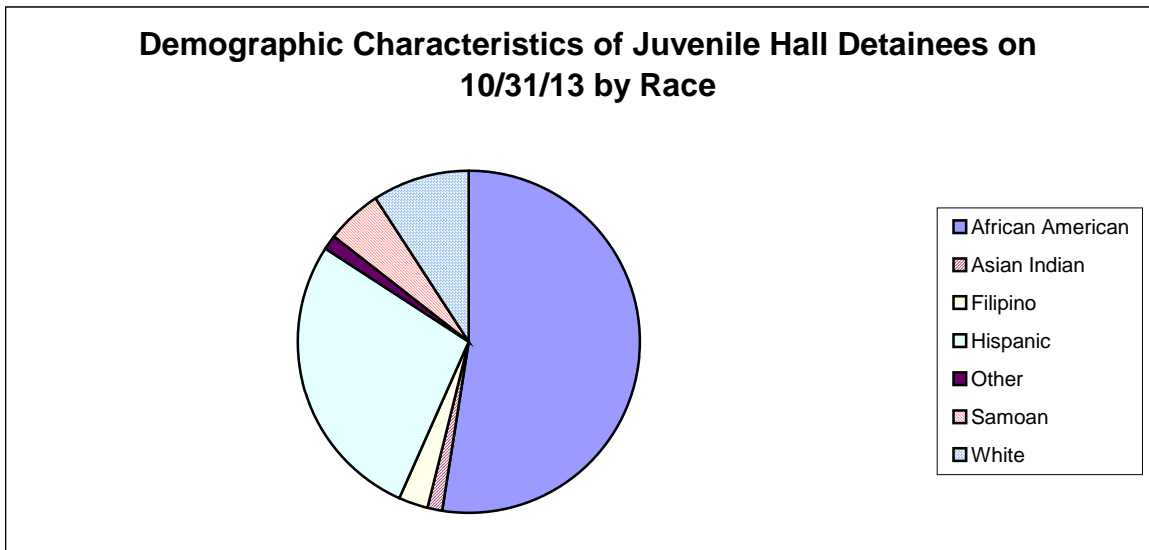
Section III

Demographics

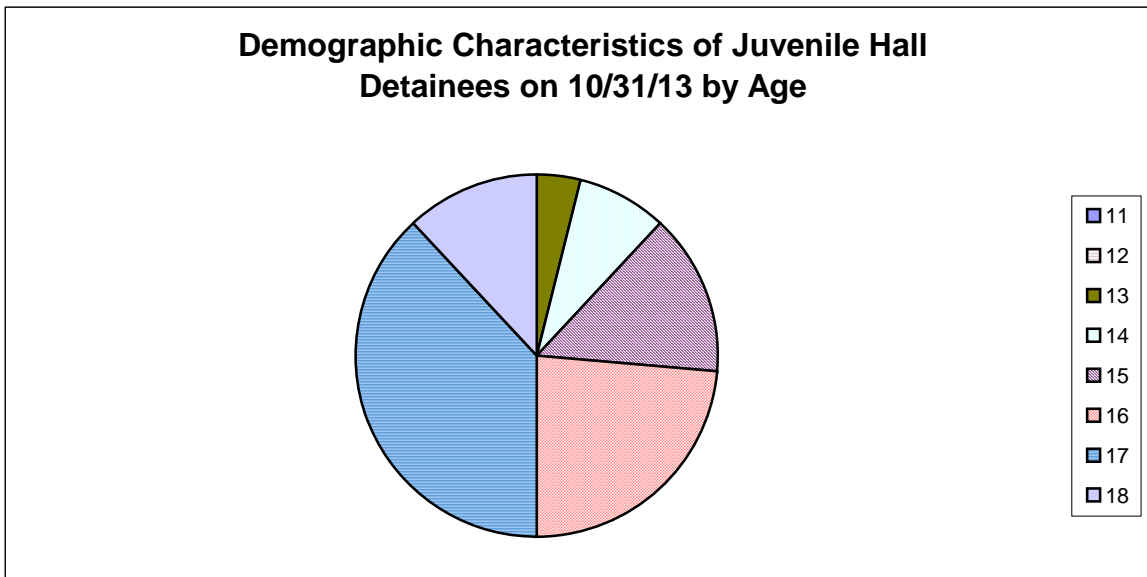
Gender	Frequency	Percent
Female	7	9.21%
Male	69	90.79%
Total	76	100.00%



Race/Ethnic Origin	Frequency	Percent
African American	40	52.63%
Asian Indian	1	1.32%
Filipino	2	2.63%
Hispanic	21	27.63%
Other	1	1.32%
Samoan	4	5.26%
White	7	9.21%
Total	76	100.00%

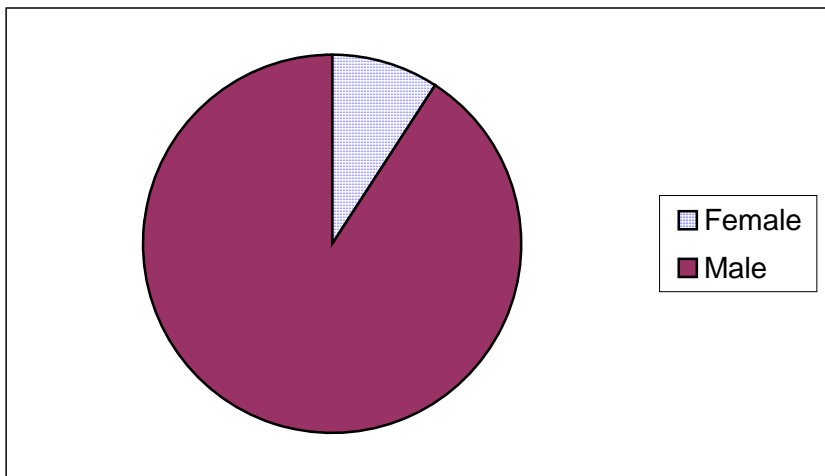


Age	Frequency	Percent
11	0	0.00%
12	0	0.00%
13	3	3.95%
14	6	7.89%
15	11	14.47%
16	18	23.68%
17	29	38.16%
18	9	11.84%
Total	76	100.00%



Demographic Characteristics of Juvenile Hall Detainees
on 10/31/2013
Age by Gender

Age	Female	Male	Total	
11	0	0	0	0.00%
12	0	0	0	0.00%
13	1	2	3	3.95%
14	1	5	6	7.89%
15	0	11	11	14.47%
16	3	15	18	23.68%
17	2	27	29	38.16%
18 and over	0	9	9	11.84%
Total	7	69	76	100.00%
	9.21%	90.79%	100.00%	



Demographic Characteristics
Of Juvenile Hall Detainees on October 31st, 2013

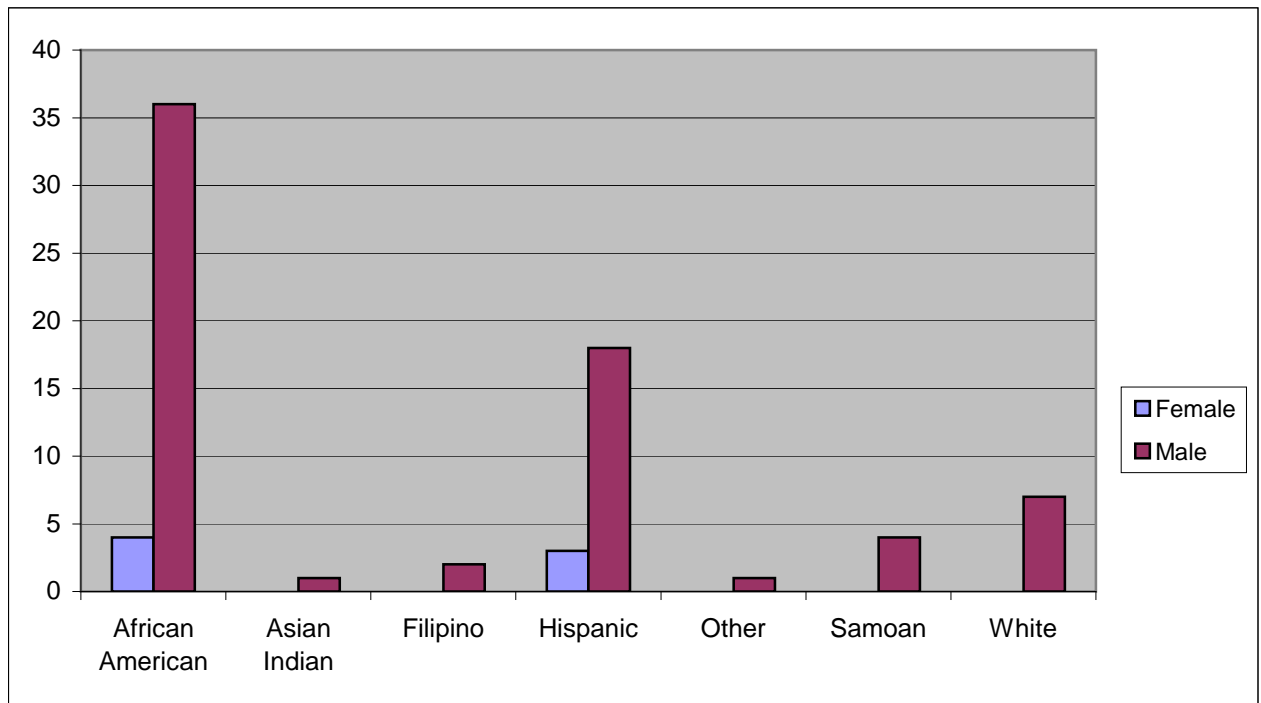
Geographic Residence of Youth	Count	%
Richmond	0	0.0%
Marina	1	1.3%
North of Market/Downtown	0	0.0%
Treasure Island/Yerba Buena Island	2	2.6%
Western Addition	7	9.2%
South of Market/Tenderloin	3	3.9%
Sunset	0	0.0%
Haight Ashbury/Castro/Upper Market	1	1.3%
Inner Mission	3	3.9%
Potrero	3	3.9%
Parkside	0	0.0%
Ingleside (West of Twin Peaks)	8	10.5%
Outer Mission	16	21.1%
Bayview	14	18.4%
Non-San Francisco and Unavailable	18	23.7%
Total	76	100.0%

Non-San Francisco and Unavailable	Count	%
Alameda	1	5.6%
Arlington	1	5.6%
Daly City	2	11.1%
Fairfield	1	5.6%
Grass Valley	2	11.1%
Oakland	3	16.7%
Pittsburg	1	5.6%
Sacramento	1	5.6%
San Bruno	1	5.6%
San Jose	1	5.6%
San Pablo	1	5.6%
Unavailable	3	16.7%
Total	18	100.0%

Demographic Characteristics
Of Juvenile Hall Detainees on October 31st, 2013

Race/Ethnic Origin by Gender

Race/Ethnicity	Female	Male	Total	%
African American	4	36	40	52.6%
Asian Indian	0	1	1	1.3%
Filipino	0	2	2	2.6%
Hispanic	3	18	21	27.6%
Other	0	1	1	1.3%
Samoan	0	4	4	5.3%
White	0	7	7	9.2%
Total	7	69	76	100.0%

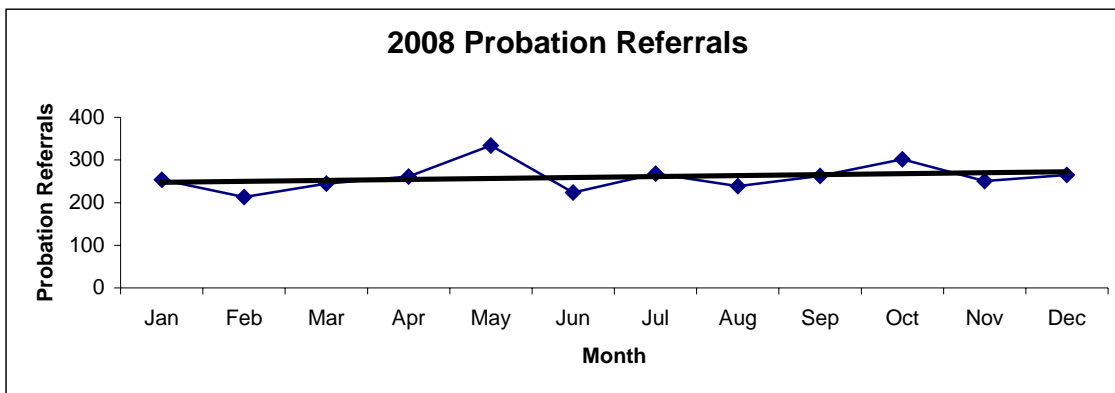


Section IV

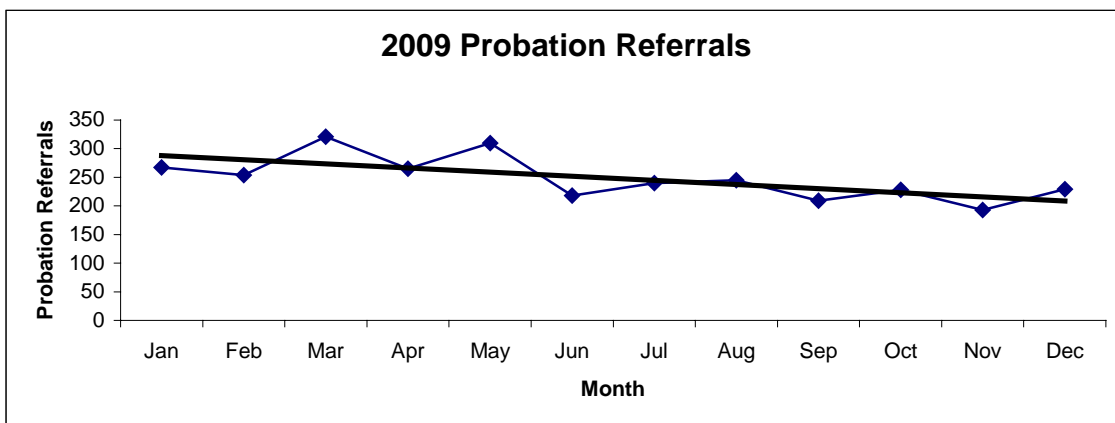
Historical Information

San Francisco Juvenile Probation Department
Probation Referrals (all sources) By Month
(2008-2010)

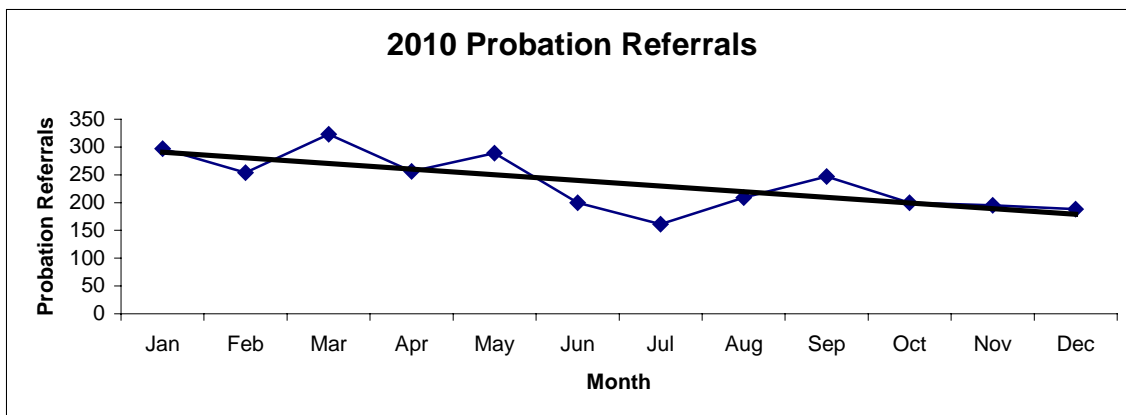
2008 Probation Referrals	Jan	Feb	Mar	Apr	May	Jun	Jul	Aug	Sep	Oct	Nov	Dec	Total
	254	213	245	261	334	224	268	239	263	302	251	265	3119



2009 Probation Referrals	Jan	Feb	Mar	Apr	May	Jun	Jul	Aug	Sep	Oct	Nov	Dec	Total
	267	254	321	265	310	218	240	245	209	228	193	229	2979

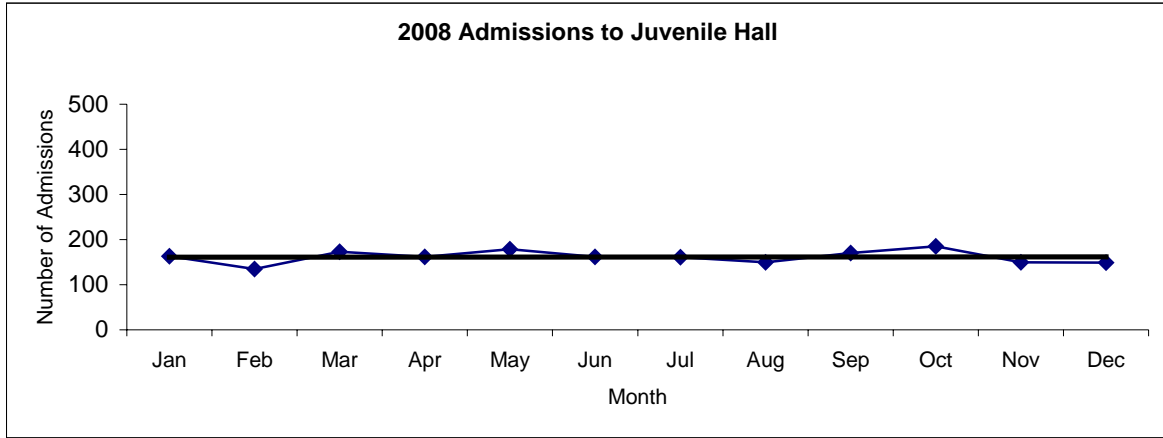


2010 Probation Referrals	Jan	Feb	Mar	Apr	May	Jun	Jul	Aug	Sep	Oct	Nov	Dec	Total
	297	254	323	256	289	200	161	209	247	200	195	188	2819

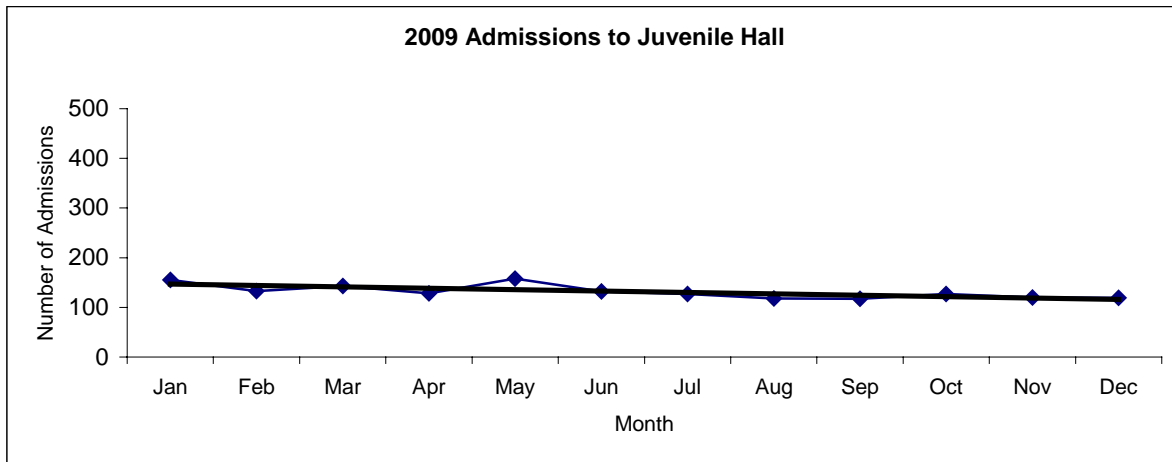


**San Francisco Juvenile Probation
 Juvenile Hall Admissions By Month
 (2008-2010)**

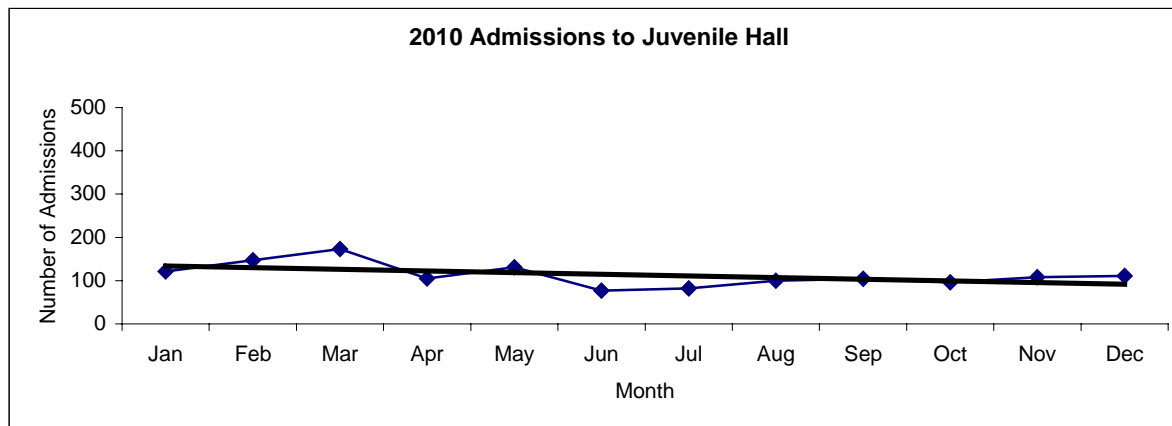
2008 Admissions	Jan	Feb	Mar	Apr	May	Jun	Jul	Aug	Sep	Oct	Nov	Dec	Total
	163	135	173	162	179	162	161	150	170	185	150	149	1939



2009 Admissions	Jan	Feb	Mar	Apr	May	Jun	Jul	Aug	Sep	Oct	Nov	Dec	Total
	155	133	143	128	158	132	127	118	117	127	120	119	1577

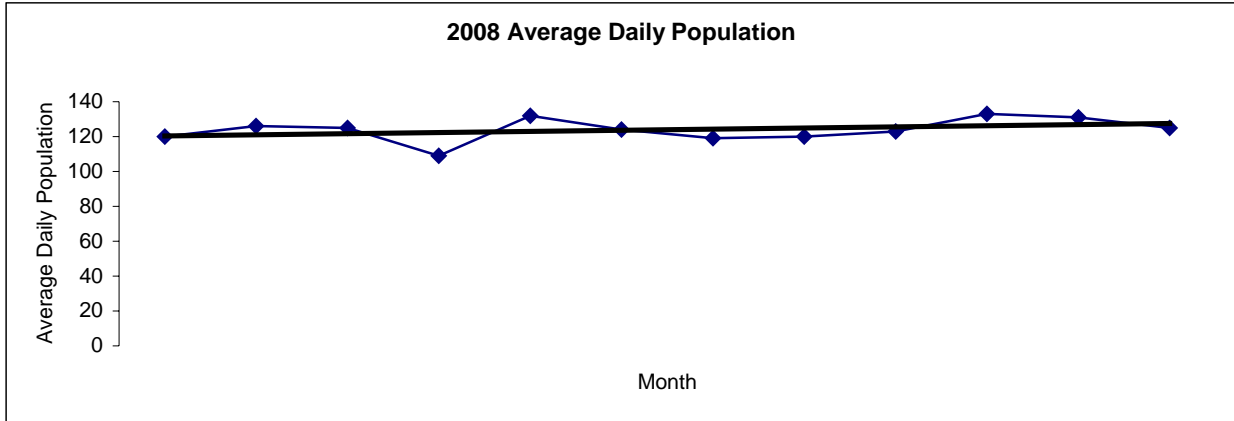


2010 Admissions	Jan	Feb	Mar	Apr	May	Jun	Jul	Aug	Sep	Oct	Nov	Dec	Total
	121	147	173	105	131	77	82	100	104	96	108	111	1355

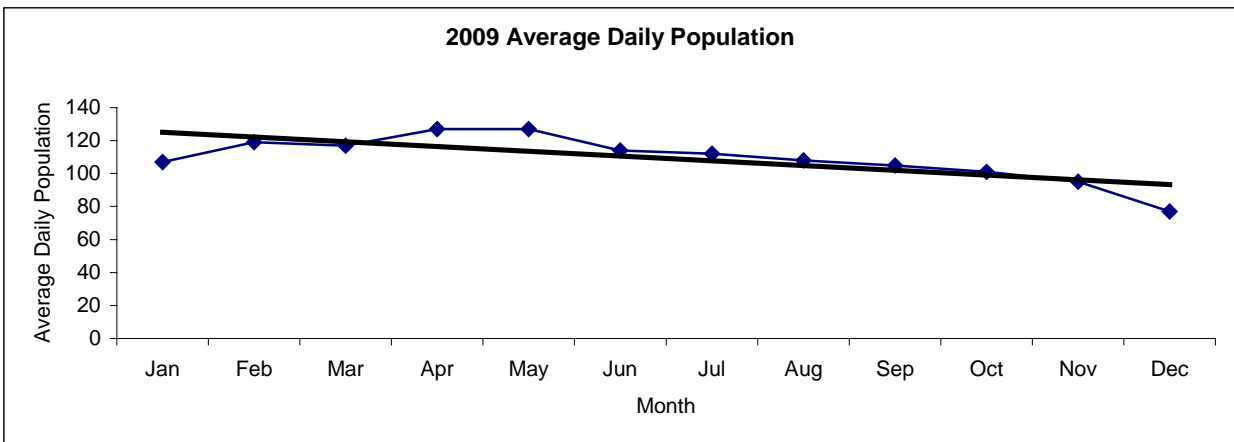


San Francisco Juvenile Probation
Juvenile Hall Average Daily Population By Month
 (2008-2010)

2008 Avg. Daily Pop.	Jan	Feb	Mar	Apr	May	Jun	Jul	Aug	Sep	Oct	Nov	Dec	Total
	120	126	125	109	132	124	119	120	123	133	131	125	124



2009 Avg. Daily Pop.	Jan	Feb	Mar	Apr	May	Jun	Jul	Aug	Sep	Oct	Nov	Dec	Total
	107	119	117	127	127	114	112	108	105	101	95	77	109



2010 Avg. Daily Pop.	Jan	Feb	Mar	Apr	May	Jun	Jul	Aug	Sep	Oct	Nov	Dec	Total
	85	104	110	107	99	97	90	88	90	84	79	92	94

