

City and County of San Francisco



Juvenile Probation Department

---

**Monthly Report for December 2013**

Presented to the Juvenile Probation Commission

January 8<sup>th</sup>, 2014

Allen A. Nance  
Chief Probation Officer

Prepared by Jose Luis Perla  
Information Technology Director  
(415) 753-7686  
jose.perla@sfgov.org

# Table of Contents

---

## Section I Summary Reports

Juvenile Hall, Log Cabin Ranch Summary Statistics .....	1
Probation Services Summary and California Youth Authority Statistics.....	2
Active Cases by Units.....	3

## Section II Current Month General Detail

Probation Referrals, Juvenile Admissions And Average Daily Population .....	4
Juvenile Hall Admissions and Average Daily Population.....	5
Commitments to out-of-home placement .....	6
Commitments to California Youth Authority .....	7
Log Cabin Ranch Admissions and Average Daily Population.....	8
Probation Referrals .....	9
Juvenile Hall And Log Cabin Ranch Incident Report .....	10
Bay Area Resident Juvenile Hall Comparison .....	11
Juvenile Hall Admissions .....	12
Juvenile Hall Detainees by Detention Reason.....	13
Juvenile Hall Average Daily Population by Rated Capacity .....	14
Juvenile Hall Average Length of Stay .....	15

## Section III Demographics

Juvenile Hall Detainees by Sex and Race/Ethnic Origin.....	16
Juvenile Hall Detainees by Age.....	17
Juvenile Hall Detainees by Age and Sex .....	18
Juvenile Hall Detainees by Geographic Residence of Youth.....	19
Juvenile Hall Detainees by Race/Ethnic Origin and Sex.....	20

**Section IV**  
**Historical Information**

2004-2006 Probation Referrals .....	21
2004-2006 Juvenile Hall Admissions .....	22
2004-2006 Juvenile Hall Average Daily Population .....	23



# **Section I**

# **Summary Reports**

## Summary Report for the Month of December 2013

<b>Juvenile Hall</b>	<i>November 2012</i>	<i>November 2013</i>	<i>December 2012</i>	<i>December 2013</i>	<i>YTD 2012</i>	<i>YTD 2013</i>
Admissions	85	44	85	53	938	856
Average Daily Population	80	61	79	53	74	74
Average Length of Stay (Releases)	28.32	36.73	25.04	38.11	28.01	30.05
Average Length of Stay (In Custody)	60.21	92.02	60.06	82.48	66.19	66.53
Releases	79	64	79	53	936	1,027
<b>Log Cabin Ranch</b>						
Admissions:						
First Time Commitments	1	2	1	4	29	24
Recommitments	0	0	0	0	0	0
<i>Total</i>	<b>1</b>	<b>2</b>	<b>1</b>	<b>4</b>	<b>29</b>	<b>24</b>
Releases:						
Graduated	0	0	0	0	1	0
Escape	0	0	0	0	6	1
Other releases	2	0	4	3	33	20
<i>Total</i>	<b>2</b>	<b>0</b>	<b>4</b>	<b>3</b>	<b>40</b>	<b>21</b>
Average Daily Population	19	13	17	15	18	14

## Summary Report for the Month of December 2013

<b>Probation Services</b>	<i>November 2013</i>	<i>December 2013</i>	<i>Year To Date 2013</i>
Probation Referrals	101	92	1,552
Total Petitions including violation of probation	39	52	756
Selected Court Dispositions:			
California Youth Authority	1	0	4
Log Cabin Ranch	4	1	24
Out of Home Placement	8	3	91
Ward Probation	12	4	208
Non-Ward Probation (725a WI)	2	0	38
Informal Probation (654 WI)	3	3	70
Violation of Probation Petitions Filed	7	7	107
<b>California Youth Authority Monthly Count San Francisco County Juvenile Court Cases December 31<sup>st</sup>, 2013</b>			
Category	Institutions	Parole	
<b>Males</b>			
White	0	0	
Hispanic	2	0	
African American	4	0	
Asian	1	0	
Native American	0	0	
Filipino	0	0	
Pacific Islander	0	0	
Other	0	0	
<b>Total</b>	<b>7</b>	<b>0</b>	
<b>Females</b>			
White	0	0	
Hispanic	0	0	
African American	0	0	
Asian	0	0	
Native American	0	0	
Filipino	0	0	
Pacific Islander	0	0	
Other	0	0	
<b>Total</b>	<b>0</b>	<b>0</b>	
<b>Grand Total</b>	<b>7</b>	<b>0</b>	

## Summary Report for the Month of November 2013

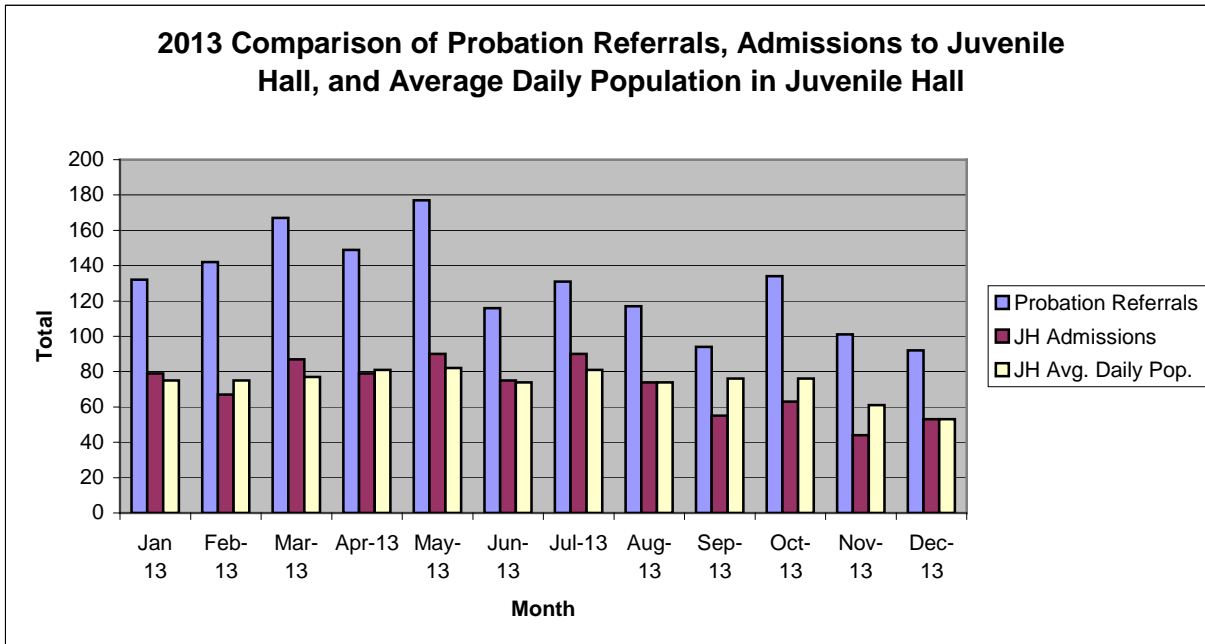
<b>Probation Services</b>			
<b>Active Cases by Units</b>	November 2013	December 2013	December Average # Youth by PO
CARC	115	107	107
Intake Green (Custody Screening Investigation)	67	66	9
Intake Gold (Probation Services 1)	138	133	19
Family Integrated Treatment Services (FITS) PS2	127	119	17
Serious Offenders Program (Probation Services 3)	137	126	18
Out-of-home Placement (Probation Services 4)	149	154	26
Juvenile Collaborative Re-entry Unit (JCRU)	44	41	14
<i>Total</i>	<b>777</b>	<b>746</b>	<b>30</b>
Total Active Intake Cases	346	333	
Total Probation/Supervision Cases	431	413	
<i>Total</i>	<b>777</b>	<b>746</b>	

**Section II**  
**Current Month**  
**General Detail**



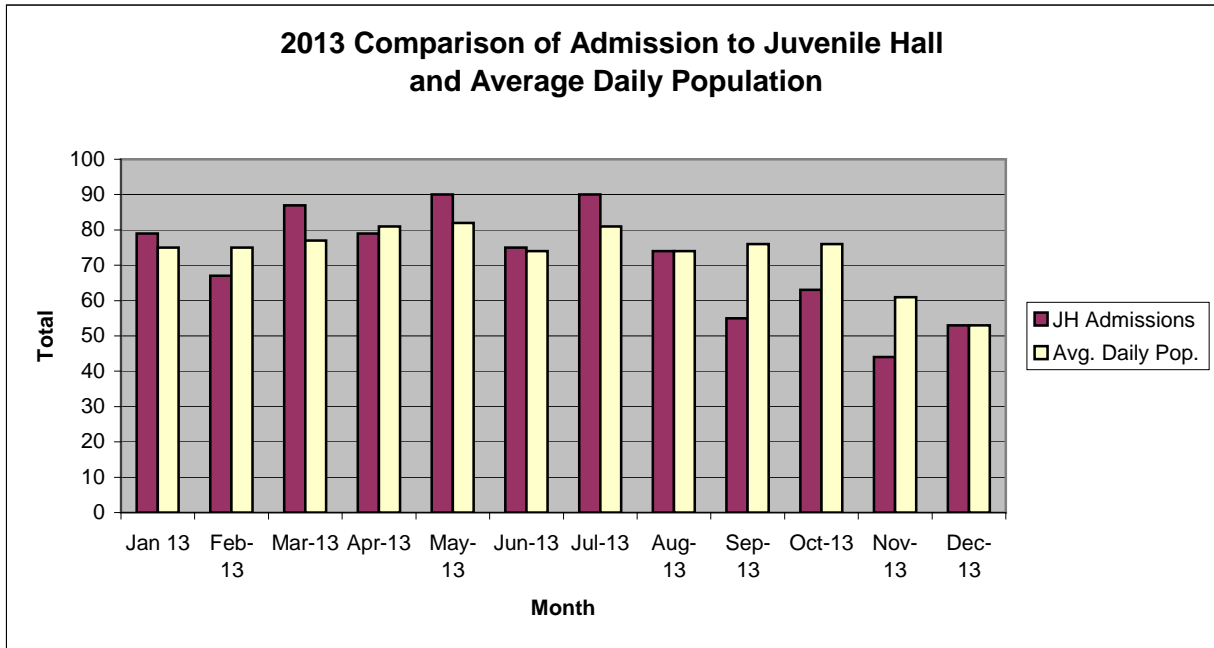
## San Francisco Juvenile Probation Department

	Jan 13	Feb-13	Mar-13	Apr-13	May-13	Jun-13	Jul-13	Aug-13	Sep-13	Oct-13	Nov-13	Dec-13
Probation Referrals	132	142	167	149	177	116	131	117	94	134	101	92
JH Admissions	79	67	87	79	90	75	90	74	55	63	44	53
JH Avg. Daily Pop.	75	75	77	81	82	74	81	74	76	76	61	53



## San Francisco Juvenile Probation Department

	Jan 13	Feb-13	Mar-13	Apr-13	May-13	Jun-13	Jul-13	Aug-13	Sep-13	Oct-13	Nov-13	Dec-13
JH Admissions	79	67	87	79	90	75	90	74	55	63	44	53
Avg. Daily Pop.	75	75	77	81	82	74	81	74	76	76	61	53

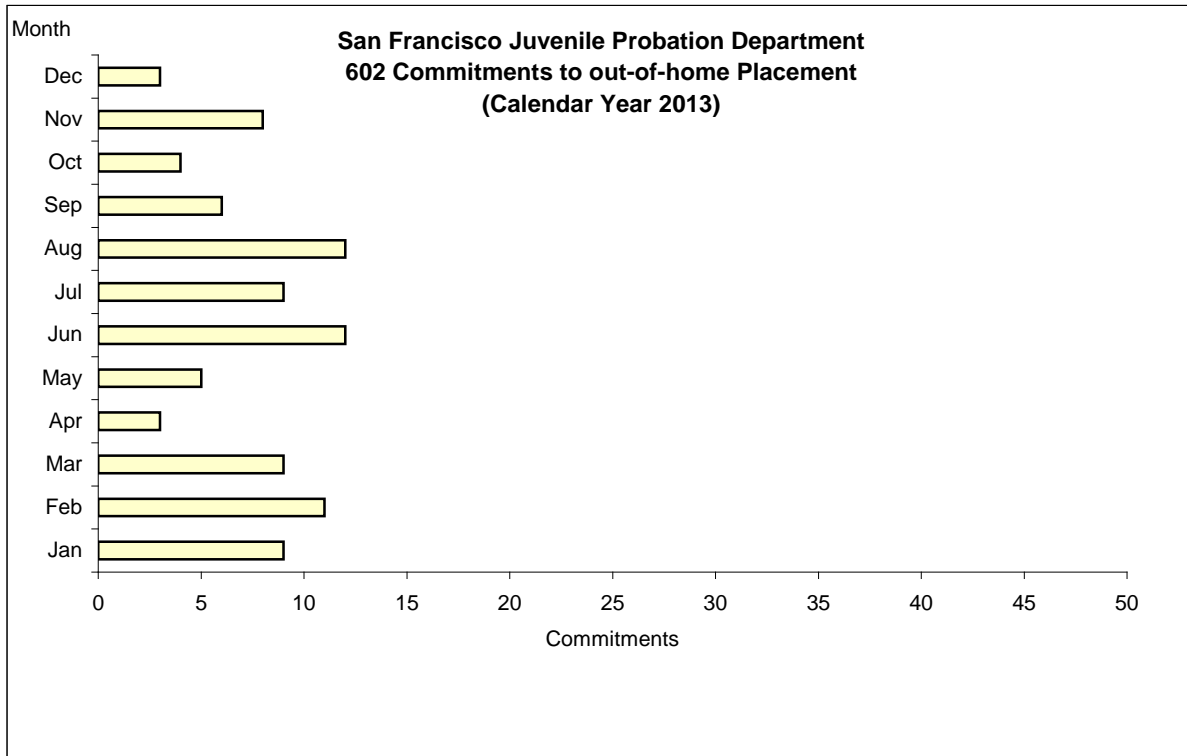


# Out-of-Home Placement<sup>1</sup>

## Commitments of 602's

### Calendar Year 2013

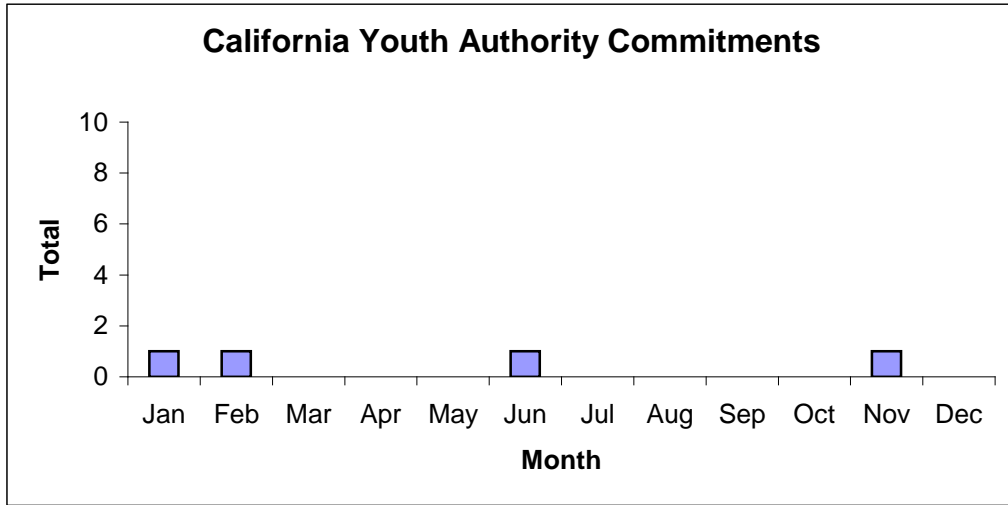
Commitments	Jan	Feb	Mar	Apr	May	Jun	Jul	Aug	Sep	Oct	Nov	Dec	Total
2013	9	11	9	3	5	12	9	12	6	4	8	3	<b>91</b>



<sup>1</sup> This report is based on 602 Commitments to out-of-home placements. If there is a 601 commitment, it will show as a footnote here. Figures are regularly updated to include reports from previous reporting periods.

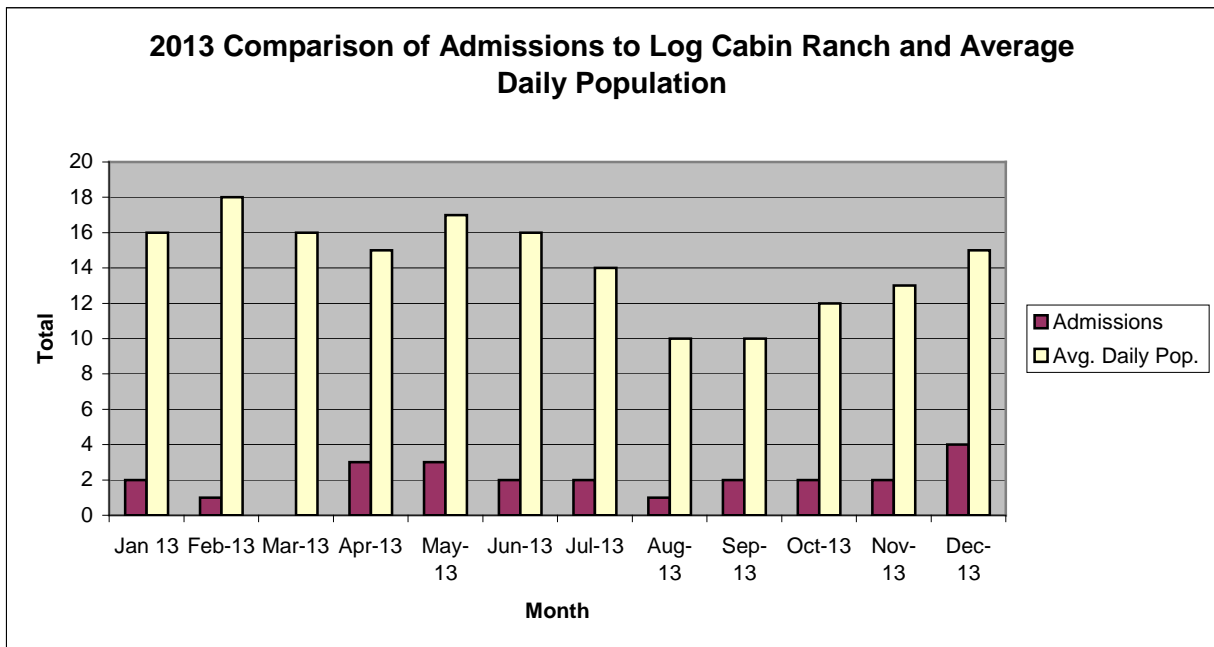
California Youth Authority  
Commitments  
(Calendar Year 2013)

Commitments	Jan	Feb	Mar	Apr	May	Jun	Jul	Aug	Sep	Oct	Nov	Dec	Total
2013	1	1	0	0	0	1	0	0	0	0	1	0	4



## San Francisco Juvenile Probation Department

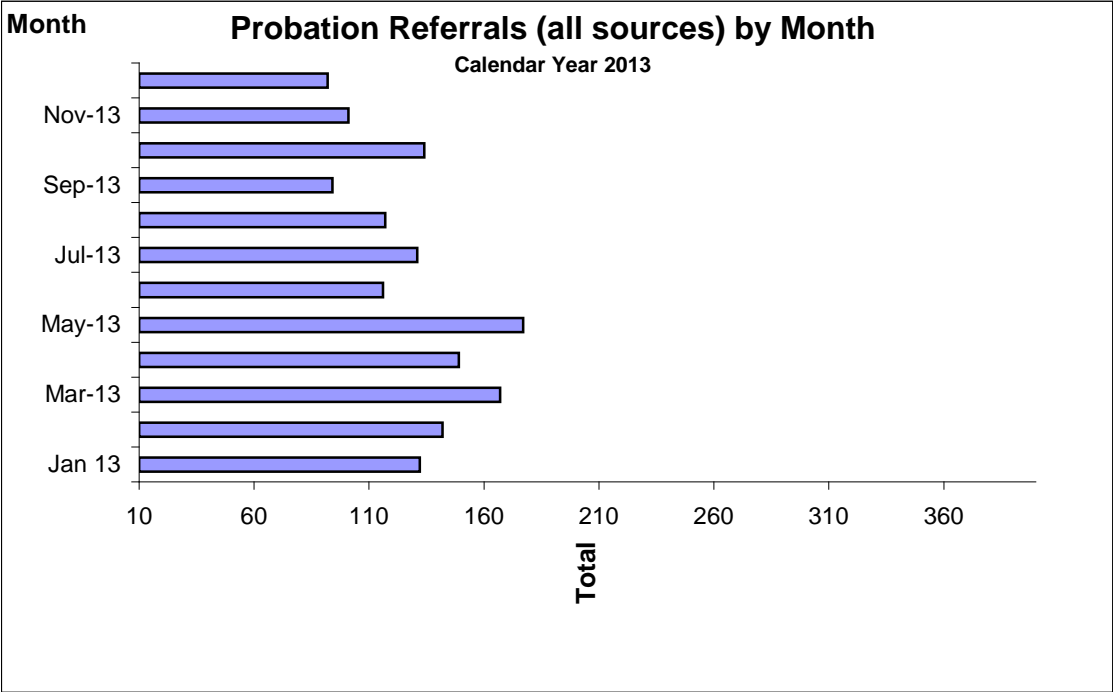
	Jan 13	Feb-13	Mar-13	Apr-13	May-13	Jun-13	Jul-13	Aug-13	Sep-13	Oct-13	Nov-13	Dec-13
Admissions	2	1	0	3	3	2	2	1	2	2	2	4
Avg. Daily Pop.	16	18	16	15	17	16	14	10	10	12	13	15



# Probation Referrals by Month Calendar Year 2013

## Probation Referrals (all sources) by Month (602 W&I)

Jan 13	132
Feb-13	142
Mar-13	167
Apr-13	149
May-13	177
Jun-13	116
Jul-13	131
Aug-13	117
Sep-13	94
Oct-13	134
Nov-13	101
Dec-13	92

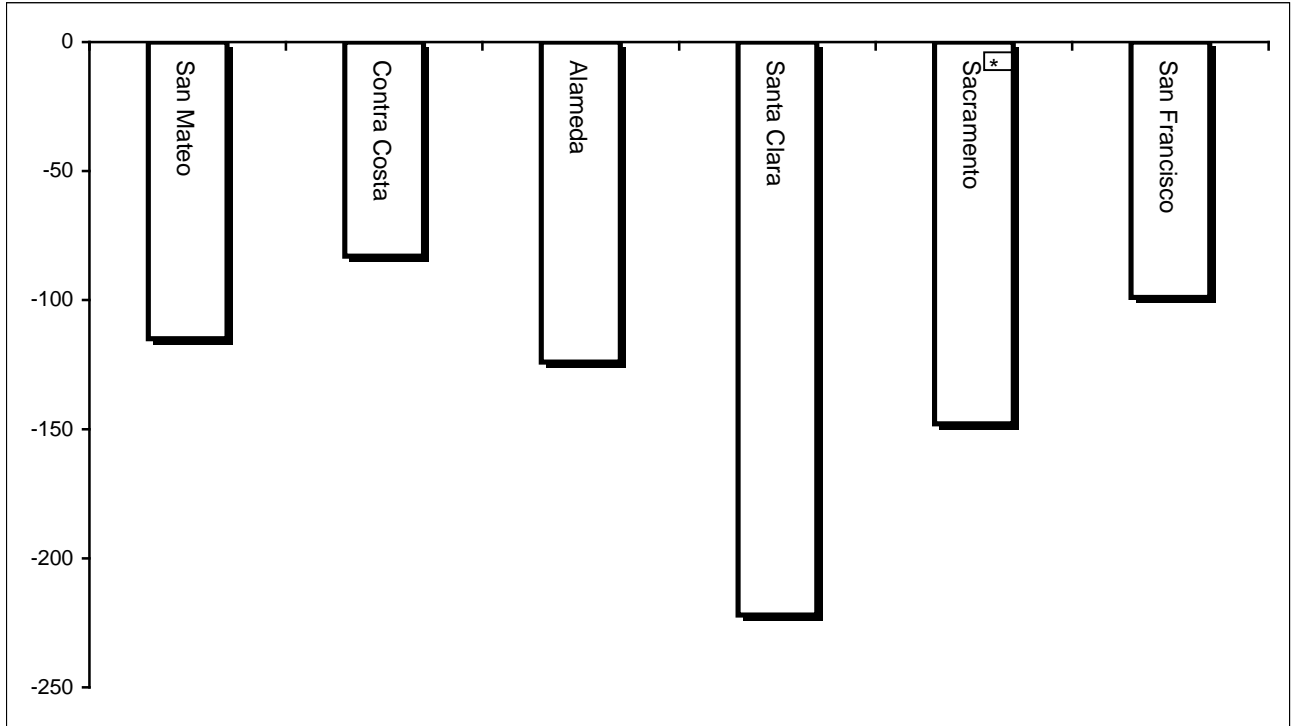


San Francisco Juvenile Probation Department  
 Monthly Incident Report Form  
 December 2013

<b>Juvenile Hall</b>	Battery on Staff	Injury to Staff Due to Restrain of Minor	Fights Minor on Minor	Battery Youth on Youth	Attempted Escape	AWOL	Attempted Suicide	Serious Contraband (Weapon illegal drug)	Use of Force	Self Inflicted Injuries
	<b>0</b>	<b>0</b>	<b>2</b>	<b>1</b>	<b>0</b>	<b>0</b>	<b>1</b>	<b>1</b>	<b>0</b>	<b>2</b>
	Assaults Minor on Minor	Battery on Staff with Injury	Fire	Fight with Injury	Battery Youth on Youth with Injury	Escape	Death	Suicide	Major Property Destruction	Use of Restraints (Handcuffs/ Shackles)
<b>0</b>	<b>0</b>	<b>0</b>	<b>0</b>	<b>0</b>	<b>1</b>	<b>0</b>	<b>0</b>	<b>1</b>	<b>2</b>	
<b>Log Cabin Ranch</b>	Battery on Staff	Injury to Staff due to Restraint of Minor	Fight	Battery Youth on Youth	Attempted Escape	AWOL	Attempted Suicide	Serious Contraband	Battery on Staff with Injury	Fire
	<b>0</b>	<b>0</b>	<b>0</b>	<b>0</b>	<b>0</b>	<b>0</b>	<b>0</b>	<b>0</b>	<b>0</b>	<b>0</b>
	Fight With Injury	Battery Youth on Youth with Injury	Escape	Death	Suicide	Major Property Destruction				
<b>0</b>	<b>0</b>	<b>0</b>	<b>0</b>	<b>0</b>	<b>0</b>	<b>0</b>				

## Bay Area Resident Juvenile Hall Comparison Over/Under Capacity

January 3<sup>rd</sup>, 2014

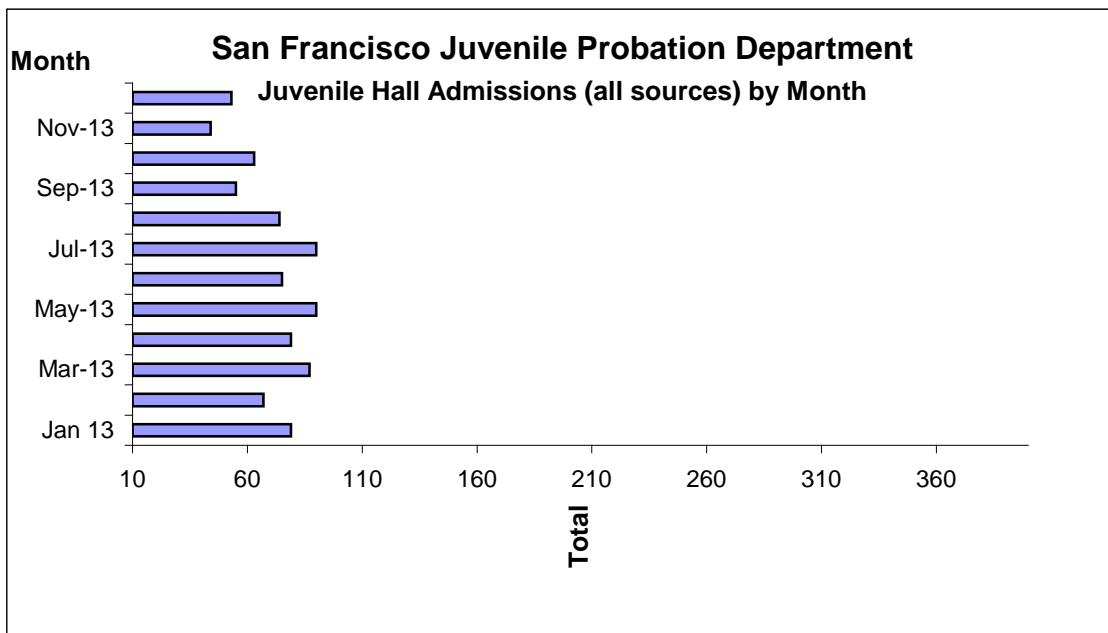


	Rated Capacity	Actual	Over/Under Capacity
San Mateo	180	65	-115
Contra Costa	240	157	-83
Alameda	280	156	-124
Santa Clara	360	138	-222
Sacramento	308	160	-148
San Francisco	150	51	-99



## Juvenile Hall Admissions by Month Calendar Year 2013

Jan 13	79
Feb-13	67
Mar-13	87
Apr-13	79
May-13	90
Jun-13	75
Jul-13	90
Aug-13	74
Sep-13	55
Oct-13	63
Nov-13	44
Dec-13	53



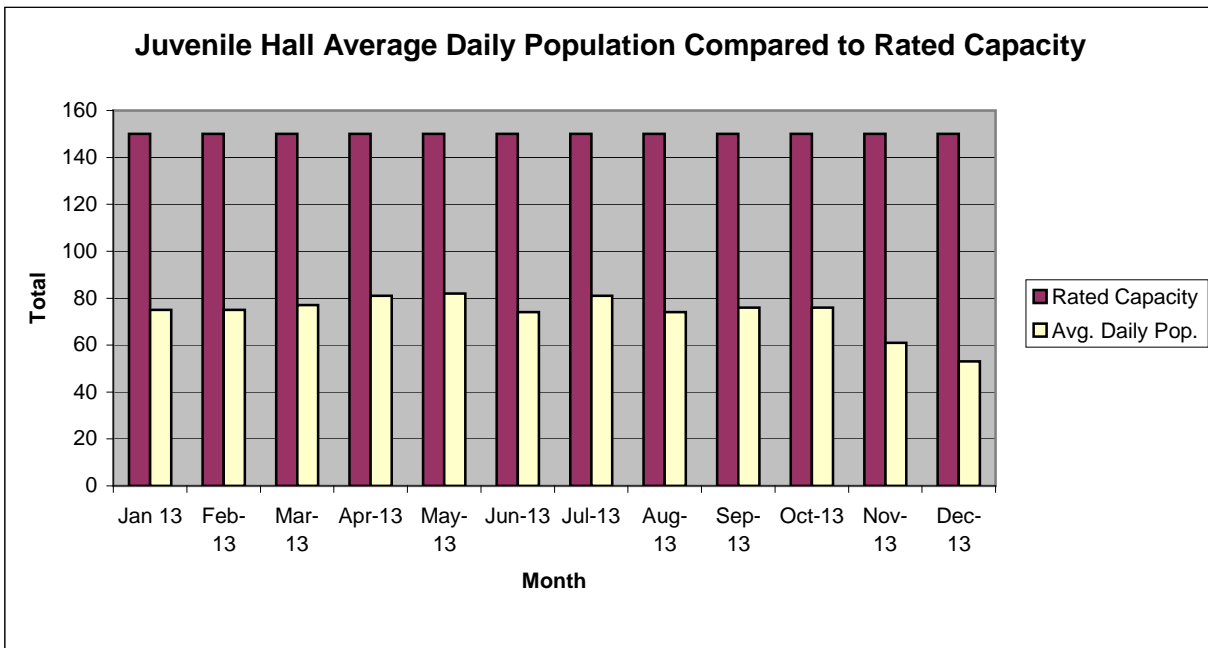
**Characteristics of Juvenile Hall Detainees on December 31st, 2013**

Referral Reason	MF*	Literal	Count	%
187 (A) PC	F	MURDER	5	9.62%
664 /187 (A) PC	F	ATTEMPTED MURDER	1	1.92%
211 PC	F	ROBBERY	4	7.69%
11352 (A) HS	F	TRANSPORT/SELL NARCOTIC/CONTROLLED SUBSTANCE	1	1.92%
459 PC	F	BURGLARY	2	3.85%
212.5 (C) PC	F	ROBBERY:SECOND DEGREE	1	1.92%
245 (A)(2) PC	F	ASSAULT WITH FIREARM ON PERSON	1	1.92%
245 (A) PC	F	ASSAULT:DEADLY WEAPON OR FORCE:POSSIBLE GREAT BODILY INJ	1	1.92%
245 (A)(1) PC	F	ASSAULT W/DEADLY WEAPON:NOT F/ARM	1	1.92%
245 (A)(4) PC	F	ADW WITH FORCE:POSSIBLE GBI	1	1.92%
23900 PC	F	ALTER/REMOVE/ETC IDENTIFICATION MARKS ON FIREARM	1	1.92%
25400 (A)(1) PC	F	CARRY CONCEALED WEAPON IN VEHICLE	1	1.92%
25400 (C)(4) PC	F	CARRY CONCEALED WEAPON PROHIBITED CLASS/UNLAWFUL POSSESSION	1	1.92%
71 PC	F	THREATEN SCHOOL/PUBLIC OFFICER/EMPLOYEE	1	1.92%
422 PC	F	THREATEN CRIME W/INTENT TO TERRORIZE	1	1.92%
487 (A) PC	F	GRAND THEFT:MONEY/LABOR/PROPERTY	1	1.92%
487 (C) PC	F	GRAND THEFT FROM PERSON	3	5.77%
10851 (A) VC	F	TAKE VEHICLE W/O OWNER'S CONSENT/VEHICLE THEFT	2	3.85%
29820 (B) PC	F	CONVICTED PERSON POSSESS/ETC FIREARM WHILE UNDER AGE 30	1	1.92%
25850 (C)(2) PC	F	CARRY STOLEN LOADED FIREARM	1	1.92%
242 PC	M	BATTERY	1	1.92%
777 (A)(2) WI	M	FAIL TO OBEY ORDER OF JUVENILE COURT:602 WI	3	5.77%
628.1 WI	M	VIOLATION(S) OF HOME SUPERVISION CONDITION	4	7.69%
737 WI	M	CHANGE OF PLACEMENT/PLACEMENT FAILURE	4	7.69%
WRNT602		ARREST WARRANT	8	15.38%
CTORD 602		COURT ORDER	1	1.92%
		<b>Total</b>	<b>52</b>	<b>100.00%</b>

\*M=Misdemeanor; F=Felony

## San Francisco Juvenile Probation Department

	Jan 13	Feb-13	Mar-13	Apr-13	May-13	Jun-13	Jul-13	Aug-13	Sep-13	Oct-13	Nov-13	Dec-13
Rated Capacity	150	150	150	150	150	150	150	150	150	150	150	150
Avg. Daily Pop.	75	75	77	81	82	74	81	74	76	76	61	53



## Juvenile Hall Average Length of Stay

For the Month of December 2013

### <sup>1</sup>Released

<b>Range of Days</b>	<i>1-10 days</i>	<i>11-20 days</i>	<i>21-30 days</i>	<i>30 or more days</i>	<b>Total</b>
# of Youth Released	24	7	4	18	53
% of Population	45.28%	13.21%	7.55%	33.96%	100%
# of Days	91	112	109	1,708	2,020
% of Total Days	4.50%	5.54%	5.40%	84.55%	100%
Average Length of Stay	3.79	16.00	27.25	94.89	38.11

### <sup>2</sup>In Custody

<b>Range of Days</b>	<i>1-10 days</i>	<i>11-20 days</i>	<i>21-30 days</i>	<i>30 or more days</i>	<b>Total</b>
# of Youth Detained	12	9	7	24	52
% of Population	23.08%	17.31%	13.46%	46.15%	100%
# of Days	66	137	185	3,901	4,289
% of Total Days	1.54%	3.19%	4.31%	90.95%	100%
Average Length of Stay	5.50	15.22	26.43	162.54	82.48

Notes: Less than one day of stay is calculated as one day.

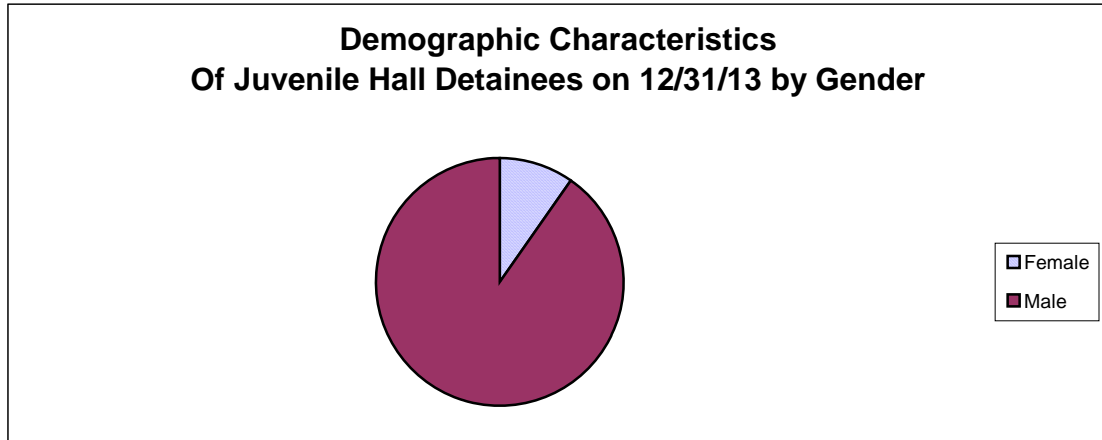
<sup>1</sup>Length of stay is calculated according to release date for those who are released.

<sup>2</sup>For those still in custody, length of stay is calculated at the last day of the month.

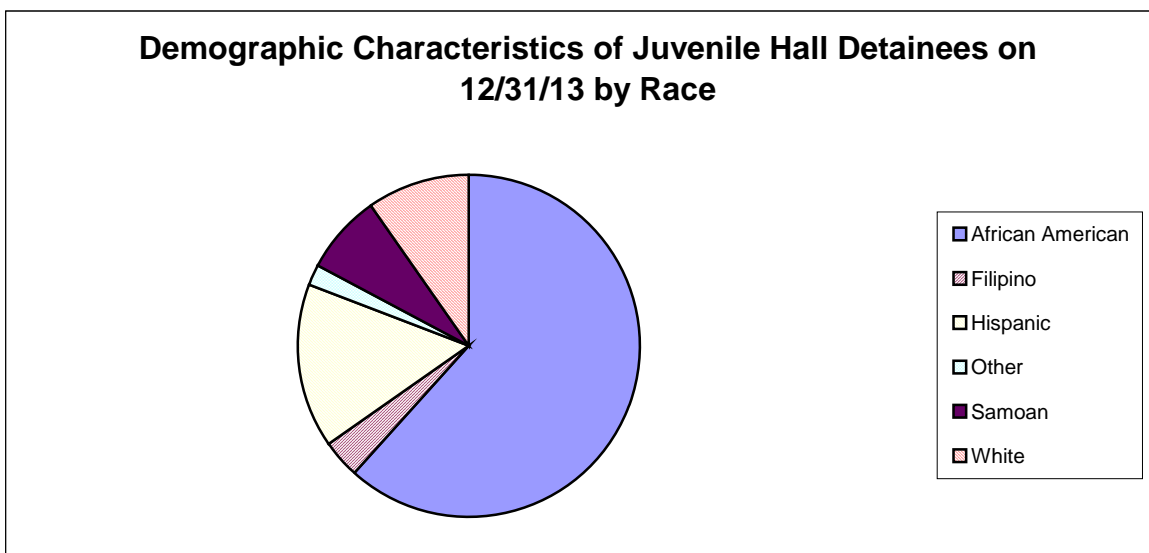
# **Section III**

## **Demographics**

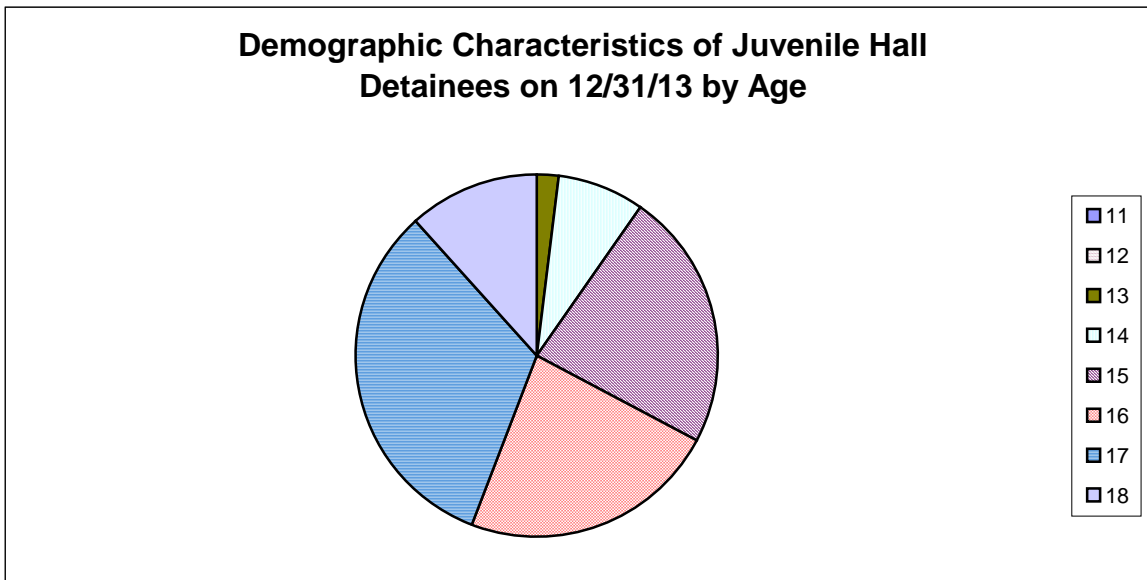
Gender	Frequency	Percent
Female	5	9.62%
Male	47	90.38%
<b>Total</b>	<b>52</b>	<b>100.00%</b>



Race/Ethnic Origin	Frequency	Percent
African American	32	61.54%
Filipino	2	3.85%
Hispanic	8	15.38%
Other	1	1.92%
Samoan	4	7.69%
White	5	9.62%
<b>Total</b>	<b>52</b>	<b>100.00%</b>

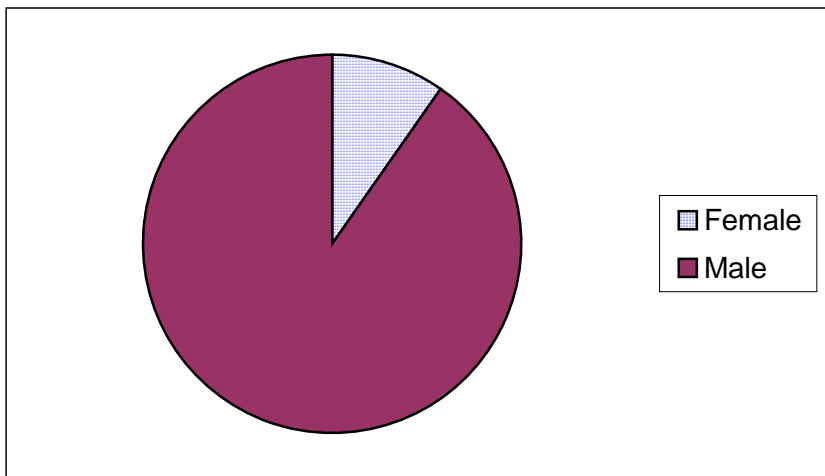


Age	Frequency	Percent
11	0	0.00%
12	0	0.00%
13	1	1.92%
14	4	7.69%
15	12	23.08%
16	12	23.08%
17	17	32.69%
18	6	11.54%
<b>Total</b>	<b>52</b>	<b>100.00%</b>



Demographic Characteristics of Juvenile Hall Detainees  
on 12/31/2013  
Age by Gender

Age	Female	Male	Total	
11	0	0	0	0.00%
12	0	0	0	0.00%
13	0	1	1	1.92%
14	2	2	4	7.69%
15	3	9	12	23.08%
16	0	12	12	23.08%
17	0	17	17	32.69%
18 and over	0	6	6	11.54%
<b>Total</b>	<b>5</b>	<b>47</b>	<b>52</b>	<b>100.00%</b>
	<b>9.62%</b>	<b>90.38%</b>	<b>100.00%</b>	





Demographic Characteristics  
Of Juvenile Hall Detainees on December 31<sup>st</sup>, 2013

---

<b>Geographic Residence of Youth</b>	<b>Count</b>	<b>%</b>
Richmond	0	0.0%
Marina	1	1.9%
North of Market/Downtown	0	0.0%
Treasure Island/Yerba Buena Island	0	0.0%
Western Addition	5	9.6%
South of Market/Tenderloin	3	5.8%
Sunset	0	0.0%
Haight Ashbury/Castro/Upper Market	0	0.0%
Inner Mission	3	5.8%
Potrero	2	3.8%
Parkside	1	1.9%
Ingleside (West of Twin Peaks)	2	3.8%
Outer Mission	8	15.4%
Bayview	17	32.7%
Non-San Francisco and Unavailable	10	19.2%
<b>Total</b>	<b>52</b>	<b>100.0%</b>

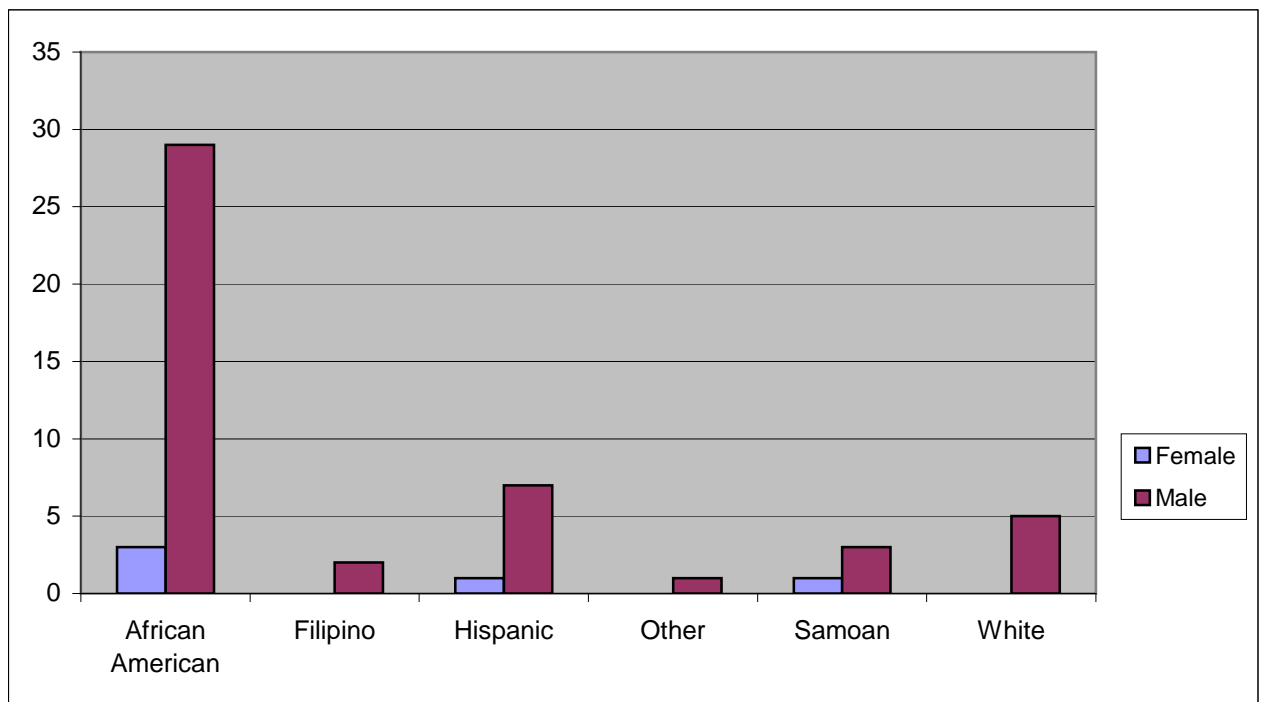
<b>Non-San Francisco and Unavailable</b>	<b>Count</b>	<b>%</b>
Arlington	1	10.0%
Berkeley	1	10.0%
Grass Valley	2	20.0%
Oakland	3	30.0%
Sacramento	1	10.0%
San Pablo	1	10.0%
Stockton	1	10.0%
<b>Total</b>	<b>10</b>	<b>100.0%</b>

Demographic Characteristics  
Of Juvenile Hall Detainees on December 31<sup>st</sup>, 2013

---

**Race/Ethnic Origin by Gender**

Race/Ethnicity	Female	Male	Total	%
African American	3	29	32	61.5%
Filipino	0	2	2	3.8%
Hispanic	1	7	8	15.4%
Other	0	1	1	1.9%
Samoan	1	3	4	7.7%
White	0	5	5	9.6%
<b>Total</b>	<b>5</b>	<b>47</b>	<b>52</b>	<b>100.0%</b>

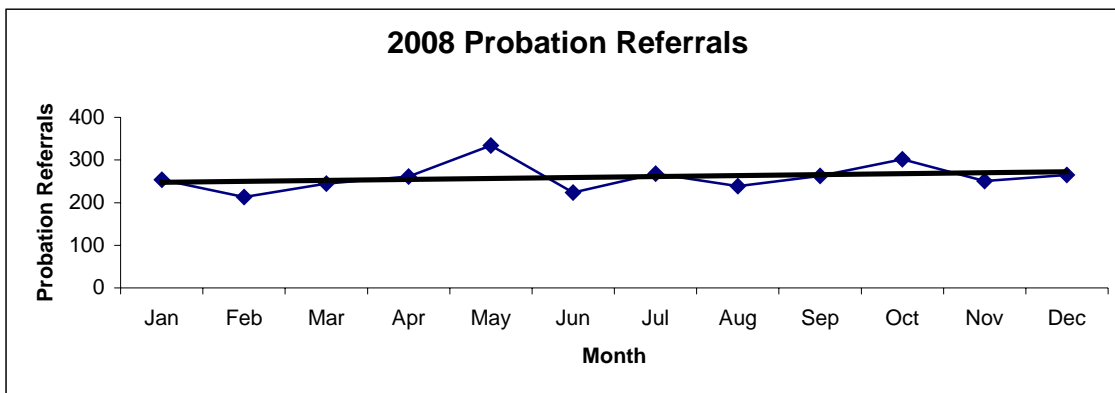


# **Section IV**

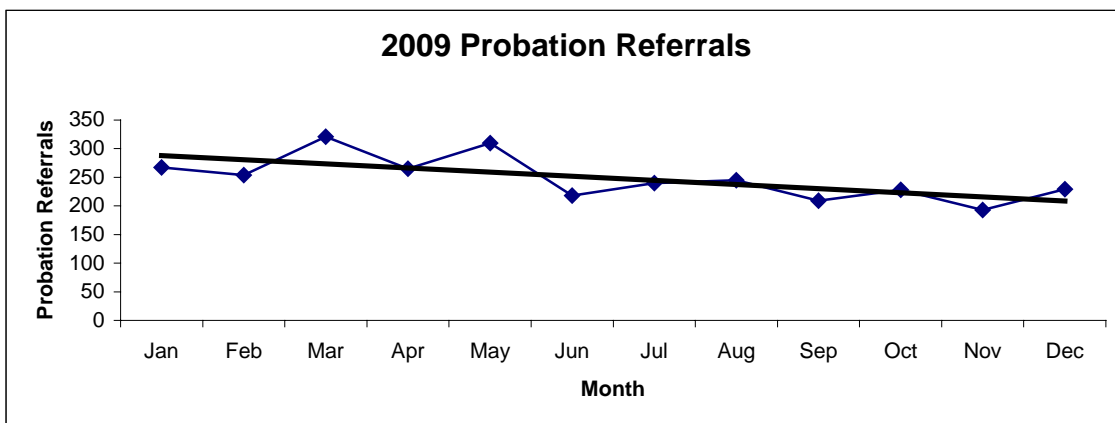
## **Historical Information**

**San Francisco Juvenile Probation Department**  
**Probation Referrals (all sources) By Month**  
(2008-2010)

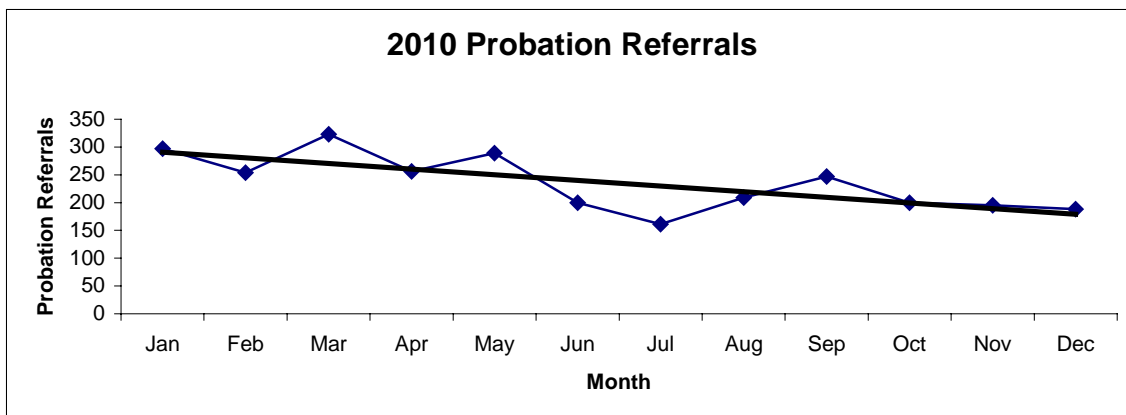
2008 Probation Referrals	Jan	Feb	Mar	Apr	May	Jun	Jul	Aug	Sep	Oct	Nov	Dec	Total
	254	213	245	261	334	224	268	239	263	302	251	265	<b>3119</b>



2009 Probation Referrals	Jan	Feb	Mar	Apr	May	Jun	Jul	Aug	Sep	Oct	Nov	Dec	Total
	267	254	321	265	310	218	240	245	209	228	193	229	<b>2979</b>

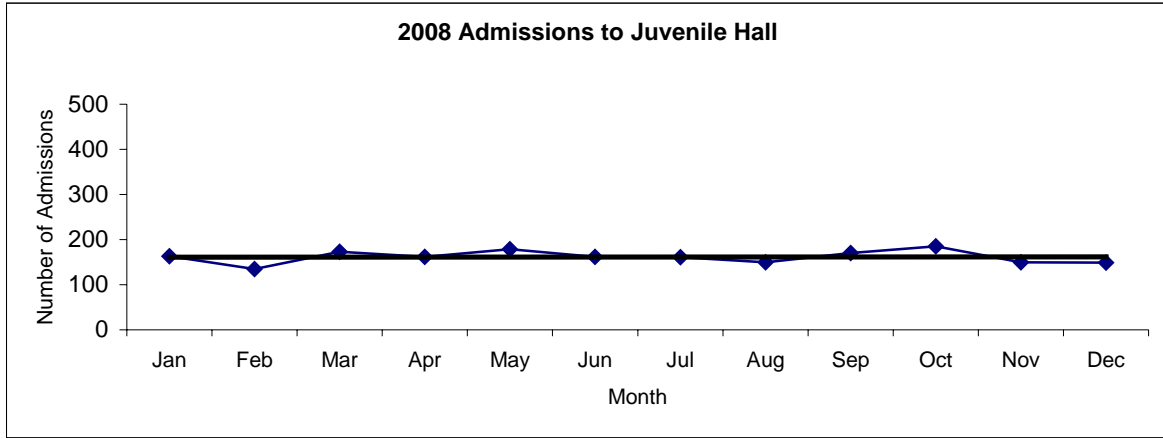


2010 Probation Referrals	Jan	Feb	Mar	Apr	May	Jun	Jul	Aug	Sep	Oct	Nov	Dec	Total
	297	254	323	256	289	200	161	209	247	200	195	188	<b>2819</b>

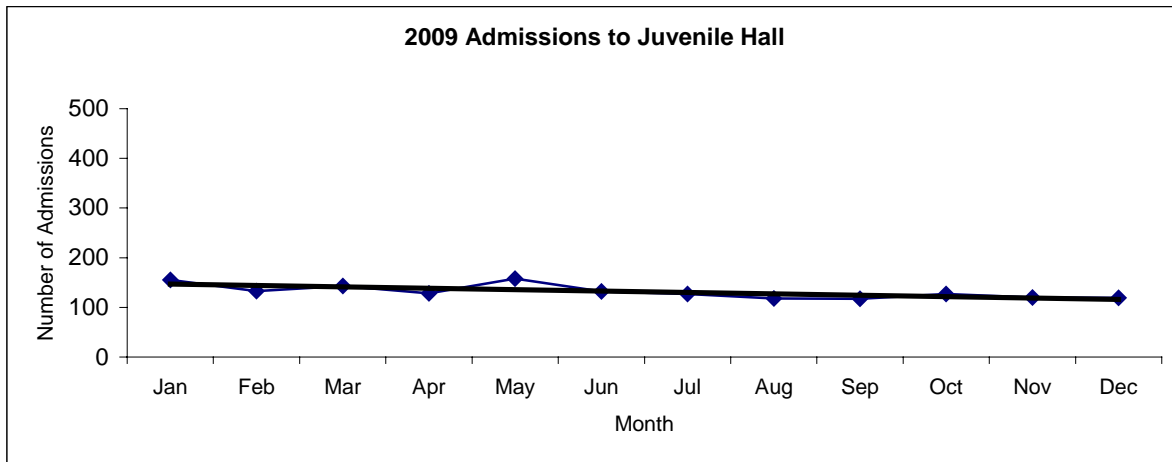


**San Francisco Juvenile Probation  
Juvenile Hall Admissions By Month  
(2008-2010)**

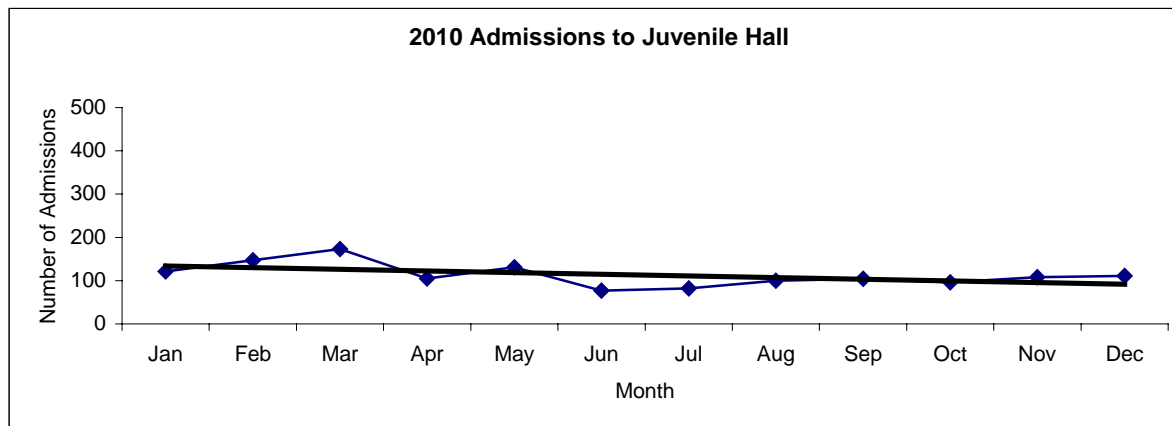
2008 Admissions	Jan	Feb	Mar	Apr	May	Jun	Jul	Aug	Sep	Oct	Nov	Dec	Total
	163	135	173	162	179	162	161	150	170	185	150	149	<b>1939</b>



2009 Admissions	Jan	Feb	Mar	Apr	May	Jun	Jul	Aug	Sep	Oct	Nov	Dec	Total
	155	133	143	128	158	132	127	118	117	127	120	119	<b>1577</b>

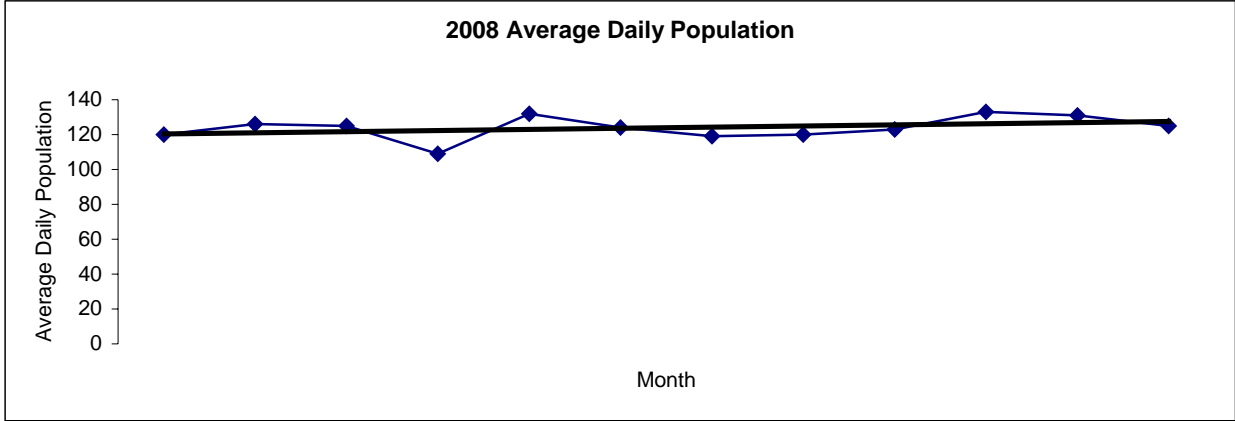


2010 Admissions	Jan	Feb	Mar	Apr	May	Jun	Jul	Aug	Sep	Oct	Nov	Dec	Total
	121	147	173	105	131	77	82	100	104	96	108	111	<b>1355</b>

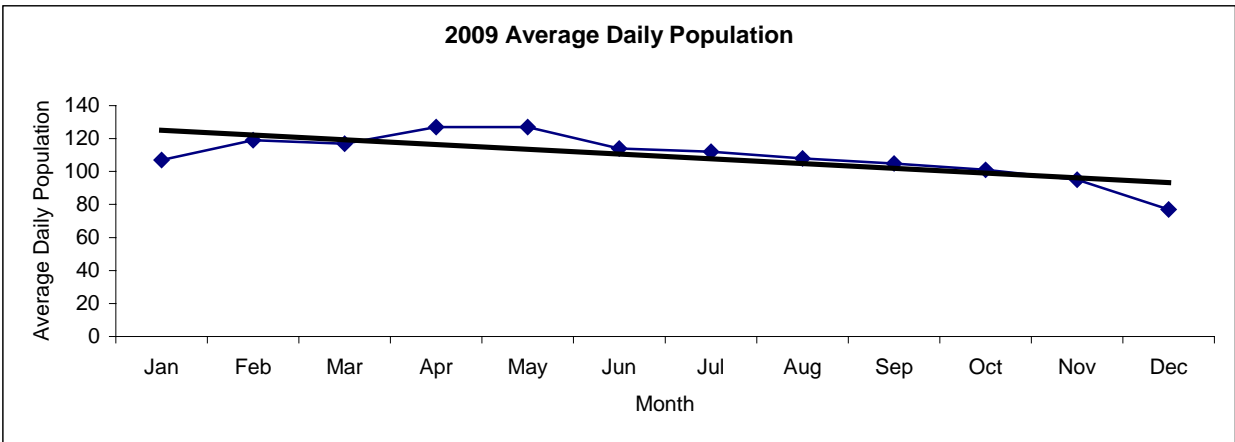


San Francisco Juvenile Probation  
**Juvenile Hall Average Daily Population By Month**  
 (2008-2010)

2008 Avg. Daily Pop.	Jan	Feb	Mar	Apr	May	Jun	Jul	Aug	Sep	Oct	Nov	Dec	Total
	120	126	125	109	132	124	119	120	123	133	131	125	<b>124</b>



2009 Avg. Daily Pop.	Jan	Feb	Mar	Apr	May	Jun	Jul	Aug	Sep	Oct	Nov	Dec	Total
	107	119	117	127	127	114	112	108	105	101	95	77	<b>109</b>



2010 Avg. Daily Pop.	Jan	Feb	Mar	Apr	May	Jun	Jul	Aug	Sep	Oct	Nov	Dec	Total
	85	104	110	107	99	97	90	88	90	84	79	92	<b>94</b>

