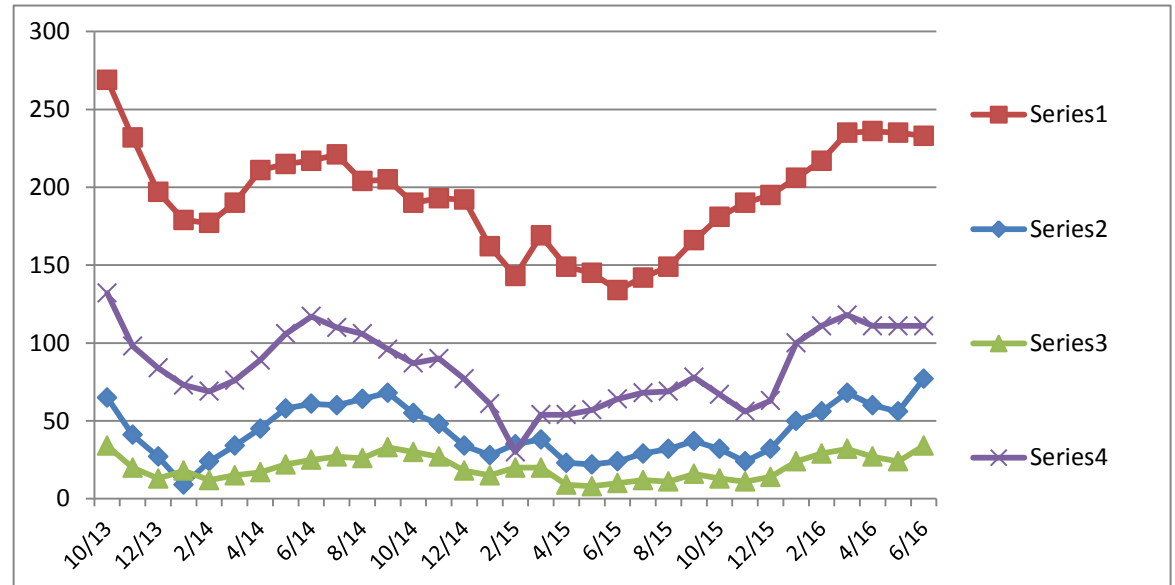


Compass Connecting Point Family Waiting List Data
(continued)

Compass Connecting Point Family Waiting List Data

Averages October 2013 -June 2016

Month	Avg. # of Families on Wait List	Avg. # of Families on Priority List (PL)	Avg. # of Families on PL 5 Months or More	Avg. # of Families Ready for Placement
10/13	269	65	34	132
11/13	232	41	20	98
12/13	197	27	13	84
1/14	179	9	18	73
2/14	177	24	12	69
3/14	190	34	15	76
4/14	211	45	17	89
5/14	215	58	22	106
6/14	217	61	25	117
7/14	221	60	27	110
8/14	204	64	26	106
9/14	205	68	33	96
10/14	190	55	30	87
11/14	193	48	27	90
12/14	192	34	18	77
1/15	162	28	15	61
2/15	143	35	20	30
3/15	169	38	20	54
4/15	149	23	9	54
5/15	145	22	8	57
6/15	134	24	10	64
7/15	142	29	12	68
8/15	149	32	11	69
9/15	166	37	16	78
10/15	181	32	13	67
11/15	190	24	11	56
12/15	195	32	14	63
1/16	206	50	24	100



Compass Connecting Point Family Waiting List Data
(continued)

2/16	217	56	29	111
3/16	235	68	32	118
4/16	236	60	27	111
5/16	235	56	24	111
6/16	233	77	34	111

Compass Connecting Point Family Waiting List Data
(continued)