



# **REENTRY SERVICES**

**San Francisco Adult Probation  
Reentry Division**

# About

In response to the passing of California's Assembly Bill 109 in 2011 (Public Safety Realignment), the San Francisco Adult Probation Department launched a new division, the Reentry Division. It's purpose was to implement comprehensive, evidence-based, reentry services. As a first step, the Reentry Division created a one-stop reentry center, the Community Assessment and Services Center (CASC), the City's premier, multi services center specializing in working with justice involved adults. Over the past 9 years, the Reentry Division has expanded it's services and reach, and now serves any justice involved adults age 18 and older. Through services managed by the Reentry Division, clients regain their place in society and permanently exit the justice system. The SFAPD balances probation supervision accountability with access to essential resources and services which reduce barriers to life stability, and empower clients to build self sufficiency skills, and permanently exit the criminal justice system. **In FY 18/19, APD-funded reentry services received 2,340 referrals.**

## OUR JOURNEY

2011

### Public Safety Realignment

- AB 109
- SB 678
- Getting Out & Staying Out Resource Guide (GOSO)



2013

### Launch of Behavioral Health Services

- DPH OTP (BHAC)
- Residential Treatment
- Outpatient Treatment
- Therapy

### Launch of Reentry Services

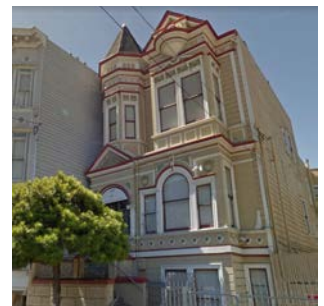
- CASC - Reentry Center
- Employment Services
- P.C. 290 - Containment Model Services
- Enrichment Opportunities
- Cameo House



2015

### Launch of Transitional Housing

- THC-Drake Hotel
- THC-Rental Subsidy
- Phatt Chance
- RSN



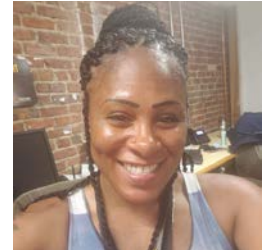
# Success Stories



**Jabari Jackson**

After being released from custody, Jabari completed residential treatment and has moved on to clean and sober transitional housing. He is a member of the Mentoring Men's Movement (M3) and actively engaged in his community. Most recently he has become a chef at a five star hotel in Oakland and worked with the CASC's employment team to get the culinary equipment he needed to start his new career. In his own words Jabari states, "I have come through the belly of the beast and have emerged on the other side with a new appreciation of life and all that it has to offer."

Alexis Maxwell began in Behavioral Health Court and completed residential treatment at HealthRight360. After completing treatment she transitioned to the Drake transitional housing program and got permanent housing a year later. Alexis is currently a Case Manager II for Larkin Street Youth Services, Rising Up Program and regularly attends Solutions for Women, weekly empowerment group.



**Alexis Maxwell**



**Brock Crawford**

After the death of his partner who died of an overdose, Brock fell into addiction. Through his reentry journey, Brock has engaged in numerous APD-funded services. He receives case management services at the CASC, was a client in Behavioral Health Court, completed residential treatment, moved into the New Horizons transitional housing program, and is working full-time as an administrative specialist. In his own words, Brock states, "Probation supported me in growing and staying alive. I now have 1 year sober, work full-time, go to the gym, and take care of myself. My ultimate goal is to give back to others who struggle the same way that I did."

## 2017

### Expanded Transitional Housing

- Westside Community Services

### Community Grants

- Women's Higher Education Support
- Mentoring
- Community Circles

### APD-Reentry: Women's Gender Responsive Coordinator



## 2018

### APD oversees Violence Prevention Program

- IPO-TAY
- IPO-FAMILY

### APD-Reentry launched:

- Women Justice Reform

### 1st Annual Recovery Summit



## 2019

### Digitized GOSO

- sf-goso.org

### 2nd Annual Recovery Summit

### Expanded Transitional Housing

- Norma Hotel
- Shahil Hotel

## 2020

### Expanded Transitional Housing

- CW Hotel
- Step Up to Freedom Rapid Re-Housing Program

# Community Assessment & Services Center (CASC)

## CASC Services Overview

The Community Assessment and Services Center (CASC), is a one-stop, multi-service reentry center which specializes in working with justice involved people ages 18 and older. The CASC embraces a client-centered, strength-based approach, empowers personal responsibility and streamlines access to evidence based services which include clinical and reentry case management, medication management and distribution, peer coaching, cognitive behavioral interventions, substance dependency and recovery services, education and employment services, barrier removal and benefits enrollment assistance.

Led by SFAPD and UCSF/Citywide, and in partnership with SF public safety partners, San Francisco Superior Court, Collaborative Courts, Federal Probation, State Parole, San Francisco Department of Public Health, Human Services Agency, Office of Economic and Workforce Development, Department of Child Support Services and an array of talented community based providers, the CASC reduces over-reliance on incarceration, mitigates behavioral health challenges, builds self-sufficiency skills, and strengthens public safety.



# Impact of our Efforts

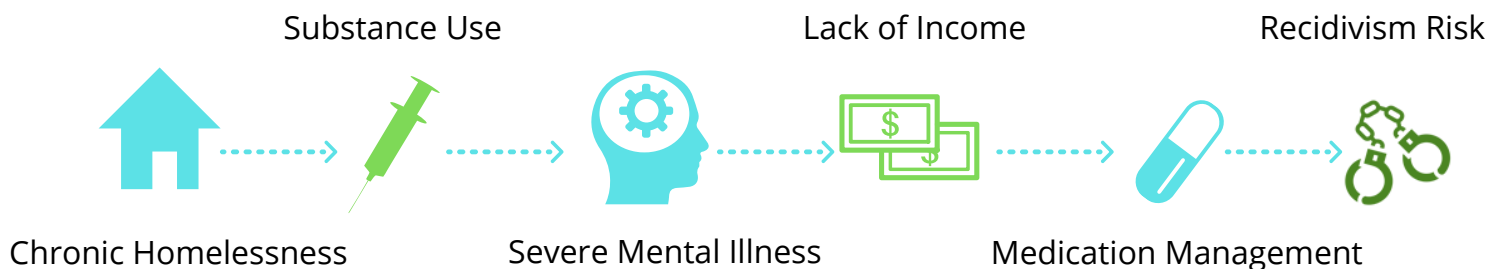
## CASC Case Management FY 18/19

In the Fall of 2017, UCSF/Citywide was selected to oversee CASC services. Using the Forensic Assertive Community Treatment (FACT) model of case management, UCSF/Citywide adeptly serves clients based on their criminogenic and behavioral health needs. CASC case management capacity is regularly at 100% utilization.

### Program Capacity FY 18/19

Intensive Case Management	120
Reentry Case Management	150
APD Pretrial /Intensive Supervision Court	25
Medication Management	100
# of Unique CASC Classes Offered	23

CASC Services Address the Following Needs:



### Clinical Case Management

The CASC Case Management team works with APD's highest needs and hardest to serve forensic population.

### Most Prevalent DSM Diagnosis of Participants:

- Post Traumatic Stress Disorder (PTSD)
- Thought Disorder
- Substance Use Disorder

### CASC Medication Management:

- Psychiatric Mental Health Nurse Practitioner works with clients to evaluate/treat mental health symptoms to increase their psychiatric stability.
- Clients are evaluated for medication efficacy and side effects on an ongoing basis. Medications may be changed to address new psychiatric symptoms.
- Oral/Injectable medications are administered
- Most commonly distributed medications are antidepressants, sleep medications, and antipsychotics.

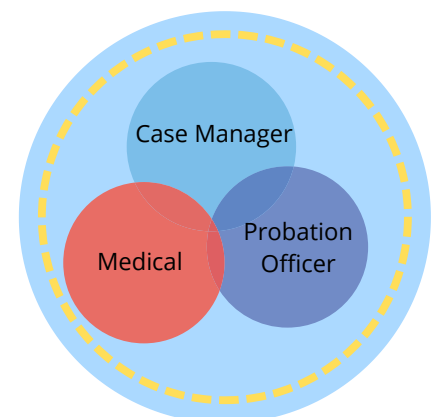
### FACT Case Management - Brief Overview

Forensic Assertive Community Treatment (FACT) is a community-based program for justice involved people that provides intensive case management and mental health treatment. FACT is a dynamic model in which practitioners respond to client's needs in the community, in-custody, and at the CASC.

### Reentry Case Management

- Biopsychosocial Assessment
- Adult Needs and Strengths Assessment (ANSA)
- Individual treatment plan based on client's criminogenic needs
- Aid client's transition from custody to the community
- Navigate barriers to reentry
- Outreach

### FACT Model of Case Management



# Impact of our Efforts

## SFAPD Funded Transitional Housing Programs

APD transitional housing programs provide stability needed for clients to rebuild their lives. In 2018, APD launched the Recovery Pathways to braid residential treatment with transitional housing, extend the amount of time a person working towards recovery could remain in services, and to improve long term housing stability outcomes. From treatment to emergency stabilization units; to long-term transitional housing, and shallow rental subsidies, APD funds programs that meet the dynamic needs of our clients.

### SFAPD Funded Transitional Housing



FY 18/19 Housing Outcomes	
Number of clients housed	363
Number of days reduced homelessness	40,379
Number of housing applications completed	1444
Number of clients placed in permanent housing	57
Number of clients who accessed rental subsidy/move in cost services	20
Amount of money saved by New Horizon participants	\$ 102,508.00



15 Emergency Stabilization

- Partnership with SFGH Foundation
- Emergency stabilization units that bridge homelessness, treatment, and transitional housing



210 Supportive, Transitional SRO Units

- Partnerships with Tenderloin Housing Clinic and Recovery Survival Network
- Master Lease and Block Rental Agreements
- Permanent Housing Assistance



28 Congregate, Transitional Housing Beds

- Partnerships with Westside Community Services and Phatt Chance
- Locations in Lower Haight and Bayview
- Permanent Housing Assistance



48 Rental Subsidy & Permanent Housing Support

- Partnership with Episcopal Community Services, Tipping Point, and Tenderloin Housing Clinic
- Step Up to Freedom: 3 Year Rental Subsidy Program
- New Roads: 6 months Rental Subsidy Program
- Move-In Cost Assistance



11 Women's Gender Responsive Transitional Housing

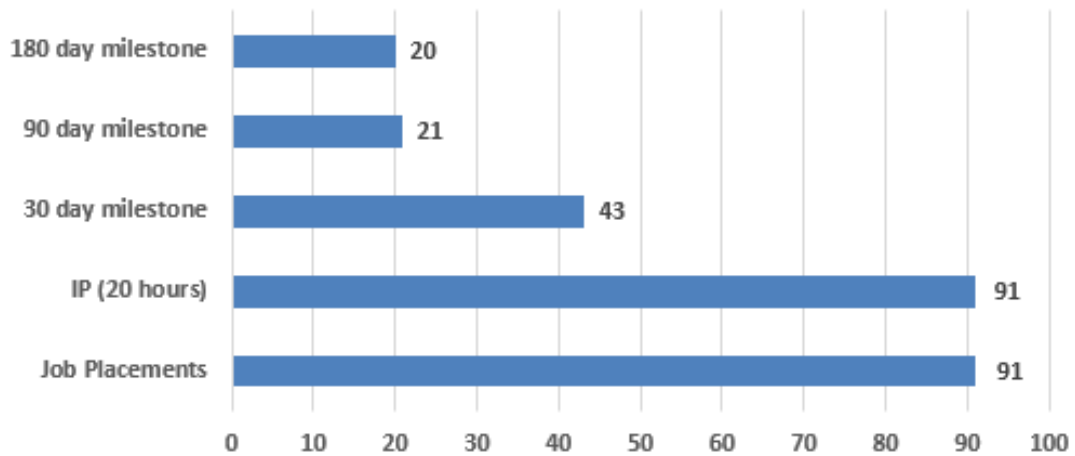
- Partnership with Center on Juvenile and Criminal Justice - Cameo House
- Women's Gender Responsive Program
- Up to 11 women and 22 children
- Permanent Housing Assistance

# Impact of our Efforts

## Employment

APD funds a variety of employment programs to connect clients with opportunities that lead to self-sufficiency. From job placement and retention services offered at the CASC through Goodwill Industries, to entrepreneur training with Renaissance, and including a collaborative violence prevention program for at-risk transitional age young adults, APD is committed to working with community partners who understand the employment challenges our clients face.

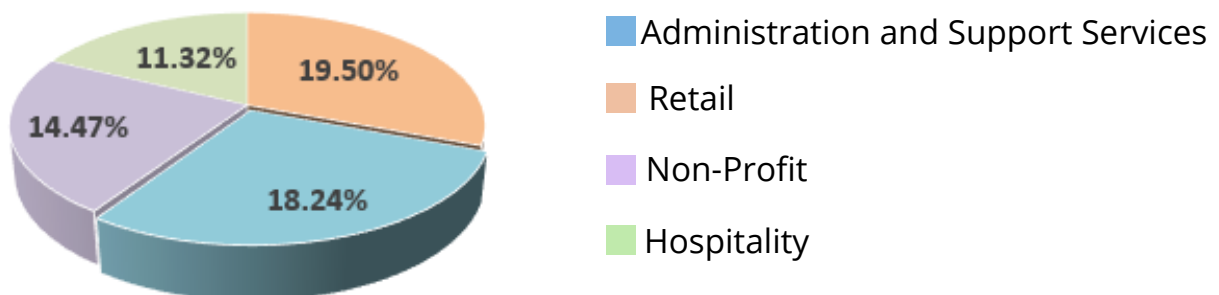
### FY 18/19 CASC/Goodwill Job Placements and Retention Milestones



### FY 18/19 CASC/Goodwill Employment Services

Referrals	465
Intakes	346
Onsite Hiring Events	37

### Top Four Industries for FY 18/19 Employment Placements



# APD Recovery Pathways

## Overview

Substance dependency is a challenge faced by many APD clients. APD's Recovery Pathways offer treatment options and post-treatment transitional housing as first steps toward positive life changes. These pathways recognize the need of those in early recovery, and for streamlined systems. APD and the Citywide team support clients at every step.

**WE BELIEVE IN YOU**

"I spent many years running from my problems and staying in my addiction. I finally decided to make a change. Life changes are hard, but now I'm living in my purpose. When I go to sleep, I'm at peace. You know how good that feels?"  
- Craig

**TALK ABOUT IT**  
You have agency in your life. Ask questions. Learn about your options.

For more information, contact your Deputy Probation Officer (DPO):  
HOJ: 415-553-1706  
CASC: 415-241-4260

For general information regarding SFAPD supported treatment and transitional housing services, please contact:  
**Victoria Westbrook**  
SFAPD/Reentry Division  
victoria.westbrook@sfgov.org  
415-489-7301

**RECOVERY PATHWAYS**

A QUICK GUIDE TO TREATMENT AND TRANSITIONAL HOUSING SERVICES OFFERED BY SAN FRANCISCO ADULT PROBATION

# RECOVERY PATHWAYS

## INSPIRE

## HOPE

## CHANGE

Access to APD funded services are contingent upon Deputy Probation Officer (DPO) and/or Court approval. Please stay in touch regularly with your DPO to discuss the service options available to you.



### SELF-REALIZATION (NOW)

**Reflect on your life:**  
Have drugs caused you problems with family, friends, relationships, and life goals?



### 4 STEP PLAN TO RECOVERY

- 1.) Make a decision to change.
- 2.) Talk to your DPO or Reentry Division about Recovery Pathways.
- 3.) Commit. Experience progress.
- 4.) Meet goals. Feel success. You are re-gaining control of your life.



### TREATMENT & SUPPORT

**Treatment can be life changing:**  
Whether it's your first time or not, treatment can work for you.

When all other life bridges are broken, a positive support system and commitment to recovery can open doors to a life you couldn't imagine.



### TRANSITIONAL HOUSING

(Up to 24 months)

**Eligibility:** On SF Probation with 3-6 months left on term.

**Your success matters!**  
As you successfully complete treatment, you will be prioritized into transitional housing.

There are TWO TREATMENT and SUPPORT pathways to success



### Pathway #1 90-DAYS

Complete 90-days of a licensed residential treatment and transfer to supportive housing.

**Men - Westside - Lower Haight  
Women - Cameo House - Mission**

- Up to one year, then transfer to New Horizons for another year
- Shared/Single Rooms
- Clean & Sober, Communal Living
- Case Management
- Life Goals & Permanent Housing Support

### Pathway #2 180-DAYS

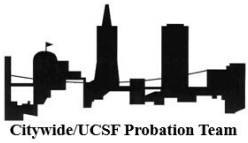
Complete 180-days of a licensed residential treatment and transfer to New Horizons/SRO or Cameo House

**THC/New Horizons - Tenderloin  
Women - Cameo House - Mission**

- Up to one year
- Single Rooms
- Clean & Sober
- Case Management
- Life Goals & Permanent Housing Support



# Community Partners Reflections



"I've never worked with such compassionate driven individuals who care so much about addressing the needs of our city's forgotten communities. The robust services Reentry has put together are unmatched anywhere in the state; they've created a true one-stop-shop where all needs are addressed."

**Alex Weil UCSF/CASC Program Director**

"The Adult Probation Department is doing an amazing job working with our transitional housing clients. The CASC has become a one-stop resource center providing integrated services to the criminal justice involved community. The CASC Case Management staff are second to none in providing client based services for all our clients. It is a privilege and honor to be a transitional housing provider for the Adult Probation Department. Thank you Reentry for all you do in providing housing, employment, mental health, and substance abuse services for this community!"

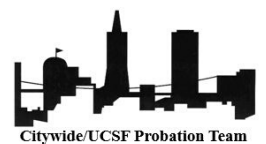
**Richard Beal THC/Director**



"The San Francisco Adult Probation has been a wonderful addition to the San Francisco community for both men and women. The staff and wide range of services they provide has exceeded the expectations from when they first opened in 2012! Our clients always come share how the interaction with staff is always pleasant and helpful. What we like is how they include and welcome nonprofits like ourselves in their services. Also APD communications and updates are constant by email, to keep us and others current on the changes within."

**Traci Watson of SISTER'S CIRCLE WOMEN'S SUPPORT NETWORK**

"Empathy, Kindness, and Humanity, describe the CASC, a one-stop reentry center where I have personally witnessed lives change. As the Program Facilitator for the CASC's Substance Treatment Outpatient Program (STOP), I treasure the services that the Adult Probation Reentry Team has organized on behalf of the community. I find it an honor and a privilege to be a part of such a great team." **Kimberly Tillman UCSF/CASC STOP Facilitator**



"San Francisco Adult Probation Department's Reentry Division is light years ahead of other Probation departments around the country. SFAPD's Chief Karen Fletcher has assembled and put a team in place that is making great things happen for its probationers. The Reentry Division funds services designed to help justice involved participants exit the criminal justice system with a chance to succeed and become productive contributors to society."

**Lou Gordon RSN/Executive Director**



# APD Funded Reentry Services

## PRE-RELEASE SERVICES

Reentry Pod  
**Five Keys Schools and Programs**

Reentry & rehabilitative services, case management reentry planning

## ONE STOP REENTRY CENTER

Community Assessment & Services Center  
**UCSF/Citywide**

Reentry services, case management, groups/classes, drop-in services, benefits acquisition.

## EDUCATION

Women's Education Program  
**Because Black Is Still Beautiful**

Gender responsive program designed to promote academic engagement of justice impacted women.

General Education  
**Five Keys Schools and Programs**

G.E.D., High School Diploma

## EMPLOYMENT SERVICES

CASC Employment Services  
**Goodwill Industries**

Career assessment, job placement, resume assistance, barrier removal services.

Interrupt, Predict , Organize/Transitional Age Youth  
**Young Community Developers and Arriba Juntos**

Employment program focused on at risk or in risk TAY ages 18-25.

Interrupt, Predict, Organize - Family  
**Young Community Developers and Arriba Juntos**

Employment program designed to meet the needs of justice impacted individuals, ages 26-35.

Entrepreneurship Training  
**Renaissance Entrepreneurship Center**

Entrepreneurship training

## CASE MANAGEMENT AND MENTORING

Case Management  
**Mentoring Men's Movement**

Mentoring services to justice involved men.

Mentoring  
**United Playaz**

Mentoring services to justice involved men.

Case Management  
**Senior Ex-Offender Program**

Case management to individuals 35 years and older.

## BEHAVIORAL HEALTH SERVICES

Residential Treatment <b>HealthRight360/Harbor Lights</b>	Substance dependency treatment and detox.
One on One Therapy <b>DPH Clinicians</b>	Psychological assessments and clinical therapy.
Containment Model Service <b>Blue Rock Institute (SFFI)</b>	Clinical and treatment services specific to sex-offenders under the containment law.
Containment Model Service <b>HOPE Program</b>	Clinical and treatment services specific to sex-offenders under the containment law.

## TRANSITIONAL HOUSING PROGRAM

Emergency Housing Program <b>SFGH Foundation</b>	Emergency and short-term housing.
Drake Hotel - New Horizons <b>Tenderloin Housing Clinic</b>	Clean and sober transitional housing and permanent housing placement.
Hart Hotel <b>Tenderloin Housing Clinic</b>	Clean and sober transitional housing and permanent housing placement.
Broadway Hotel <b>Tenderloin Housing Clinic</b>	Stabilization housing for clients of the San Francisco Collaborative Courts.
Rental Subsidy Program - New Roads <b>Tenderloin Housing Clinic</b>	Housing search and shallow rental subsidy program.
Norma Hotel <b>Recovery Survival Network</b>	Transitional housing and supportive services for justice involved individuals 18-35.
Shahil Hotel <b>Recovery Survival Network</b>	Clean and sober transitional housing and permanent housing placement.
CW Hotel <b>Recovery Survival Network</b>	Clean and sober transitional housing for APD and other justice involved individuals.
Transitional Housing <b>Phatt Chance Community Services</b>	Clean and sober transitional housing and permanent housing placement.
Our House <b>Westside Community Services</b>	Clean and sober transitional housing and permanent housing placement.

Step up to Freedom  
**Episcopal Community Services**

A rapid rehousing/rental subsidy program for justice involved individuals 18-35.

Cameo House  
**Center on Juvenile and Criminal Justice**

Gender-responsive transitional housing program.

## COMMUNITY SERVICES

Restorative Community Service Program  
**Five Keys Schools and Programs**

Community services through volunteer opportunities.

## ENRICHMENT OPPORTUNITIES

Fathers Matter  
**Adult Probation Department**

Parenting program focused on life skills, parenthood, relationships, and health.

Mothers Matter  
**Adult Probation Department**

Interactive parenting program focused on life skills, personal development, parenthood, and healthy relationships.

Process Group  
**RAW Talk For Life**

Process group which addresses barriers to reentry.

Community Circle  
**Healing Circles for Soul Support**

Group that offers support and effective tools to deal with the challenges of everyday life.

Women Support Group  
**Solutions For Women**

Gender-responsive process group for women

Welcome Home Events  
**Brothers for Change**

Welcome home events and support for justice involved individuals.

Women Empowerment Workshop  
**Total Woman Empowerment**

Gender-responsive empowerment workshops.

Life Skill Classes  
**Gloria's Gift**

Life-skills training classes for justice involved individuals.

Manalive/Batterers' Intervention Program  
**Community Works West**

Batterers' Intervention Programs are a 52 week court mandated program designed to reduce and prevent further domestic violence incidents.

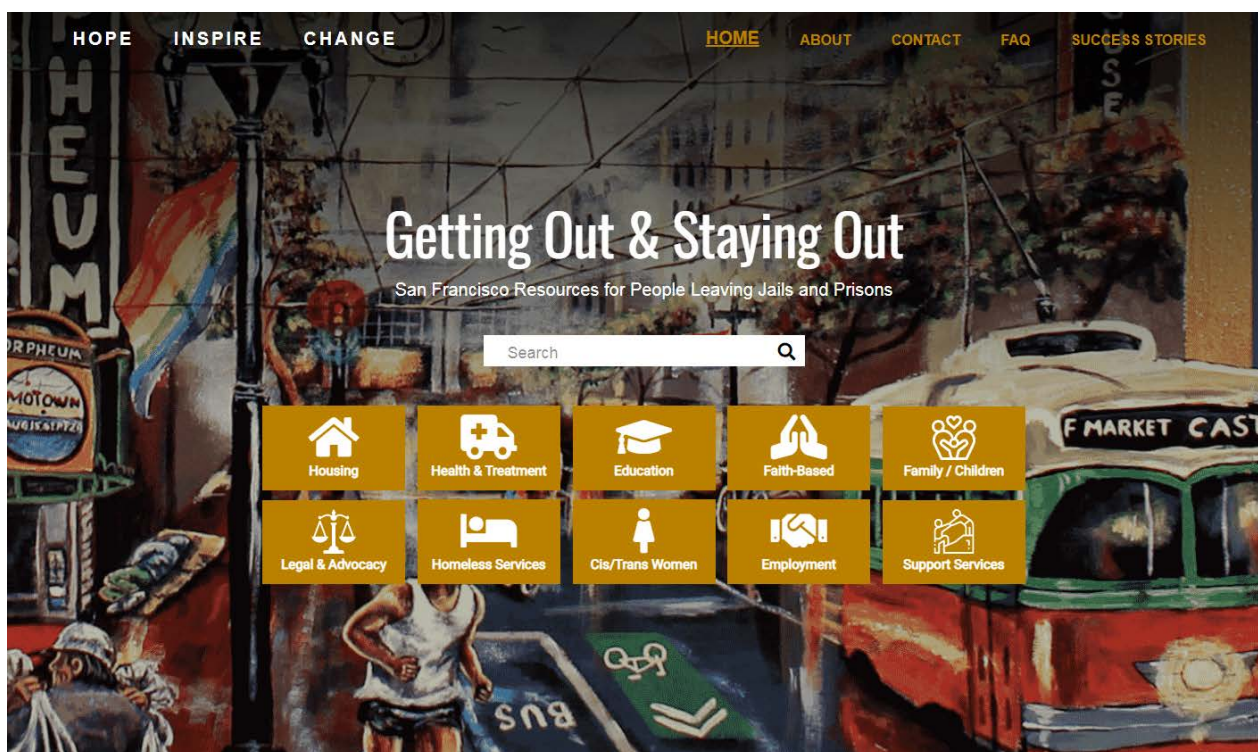
Women's Process Group  
**Sister's Circle**

Sister's Circle provides a space for women to share experiences, expand their support network, and practice goal setting.

# CASC City and Community Partners

Young Community Developers  
Community Works West  
Recovery Survival Network Brothers for Change Because Black Is Still Beautiful  
Arriba Juntos Inside Circle  
Harbor Lights Five Keys Schools & Programs CJCJ  
Goodwill Industries HR360 Solution for Women  
Westside Community Services UCSF/Citywide SFFI M3  
TWELC HOPE Program ECS SFGH SEOP PHATT Chance  
Gloria's Gift HSA Tenderloin Housing Clinic SFDPH  
OEWD Sister's Circle United Playaz Healing Circles for Soul Support  
Renaissance Entrepreneurship Center Senior Ex-Offender Program

## Reentry Resources: Getting Out & Staying Out



In 2019, in a unique partnership between APD and The Last Mile, a coding program in San Quentin State Prison, the GOSO guide was covered into a website.

[sf-goso.org](http://sf-goso.org)

# Community Events



CASC Awards Day

SB678 Conference

Job Fair

Holiday Lights Tour

Recovery Summit

Black History Month Celebration

Lobby Day

Spa Day

# Community Events



Fair Chance

Norma Hotel Launch

Mothers Matter

Meal Delivery

SF Reentry Fair

Opportunities for All

Rehabilitation

Raw Talk



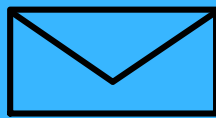
# REENTRY SERVICES

San Francisco Adult Probation  
Reentry Division

564 Sixth Street  
San Francisco, CA 94103



Call us at:  
415-489-7300



For more information, please email:  
[steve.adami@sfgov.org](mailto:steve.adami@sfgov.org)



Visit our website:  
[www.sf-goso.org](http://www.sf-goso.org)

