

Continuous City



Carter – Lynch Collaboration

San Francisco Arts Commission
SFO C3C Secure Connector Wall Project
Visual Arts Committee Presentation
March 17, 2021

Description



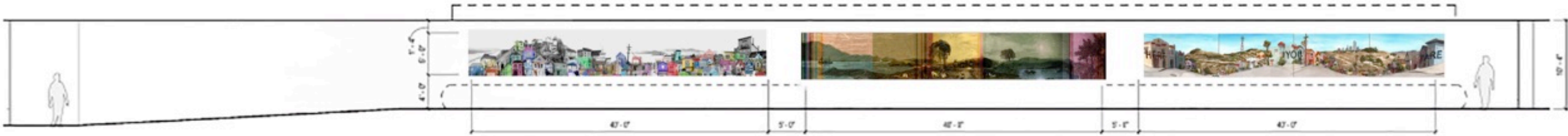
Continuous City is a 5' x 40' multi-layered, digitally printed montage of the city of San Francisco for the SFO C3C Secure Connector Wall Project.

Plan View

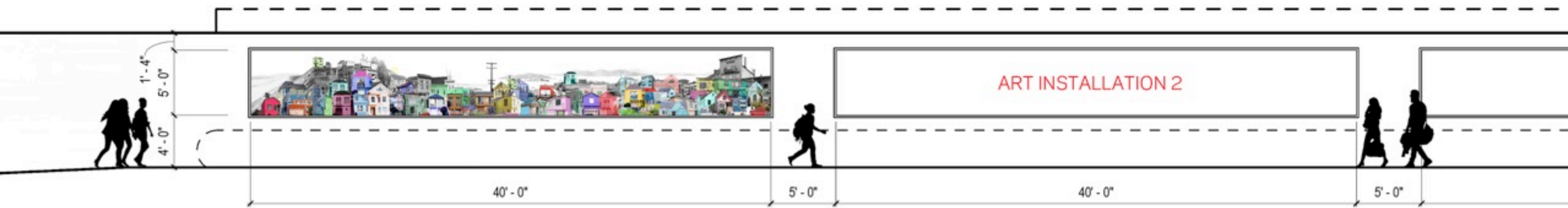
SFO C3C
Secure Connector
Wall Art Project



Elevation



1 Art Elevation
SCALE: 1/8" = 1'-0"



Concept + Design



5' x 40' multi-layered, digitally printed montage of San Francisco

- The work combines past and present imagery of this dynamic city, including historic photographs and recognizable, colorful aspects of city neighborhoods.
- Archival images are merged with new digital photography and painting, to reveal contemporary perspectives on San Francisco's architectural landscape, color palette, and natural topography.
- The combined effect is a vibrant urban dreamscape printed in bold and vivid hues, and varying degrees of opacity—allowing visitors to experience the city's unique and diverse culture through its architecture and history.

Process

The process involves printing on 2 separate material layers: aluminum Dibond composite and tempered safety glass with additional painting.



Process



Historic Image Layer:

- Selection of decades-old black and white images of San Francisco neighborhoods serves as the base of the artwork.



Process + Materials



Print Layer 1 (background):

Print on aluminum Dibond panel

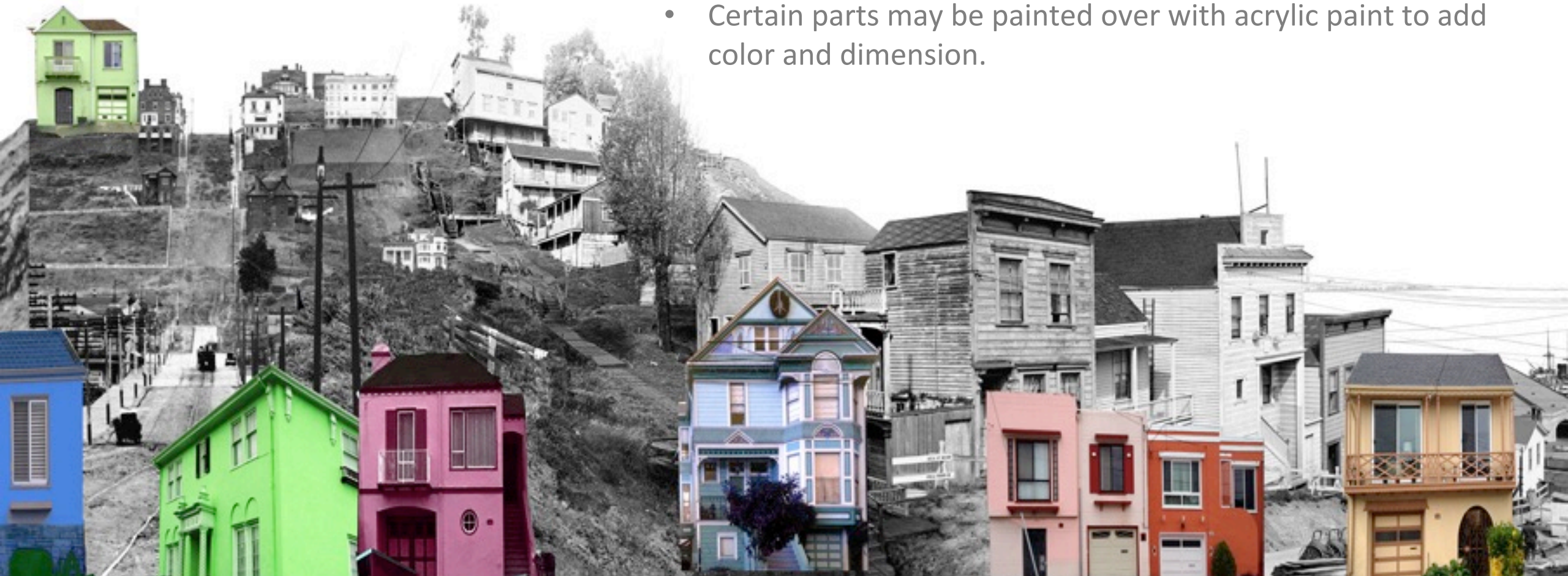
- Historic images merged with a selection of contemporary colored houses will be printed on four 5' x 10' aluminum Dibond panels and fastened to the back wall of the enclosure.

Detail

DiBond Print Layer:

Historical and Present-day Imagery

- Certain parts may be painted over with acrylic paint to add color and dimension.



Process + Materials



Print Layer 2:

Digital Print on 3/8" Tempered Safety Glass

- The second print layer features brightly colored houses printed on inner side of the safety glass resulting in transparent images that allow the background layers to show through.
- 3/8" safety glass will be placed 4" in front of the Dibond print layer. The tempered glass is installed into an aluminum track with clear silicone bead.

Detail of Glass Layer



Studio Print Sample Detail

Complete Artwork



San Francisco Arts Commission
SFO C3C Secure Connector Wall Project
Visual Arts Committee Presentation
March 17, 2021

Installation Sample

Test Print Sample on Dibond and Glass material showing 4" space between layers.



Sample Detail

Test Print Sample detail showing prints on Dibond and Glass material with 4" space between layers.



Detail



Studio Print Sample with glass

Detail



Studio Print Sample with glass



Color Palette

Color scheme is inspired by San Francisco's architectural landscape.



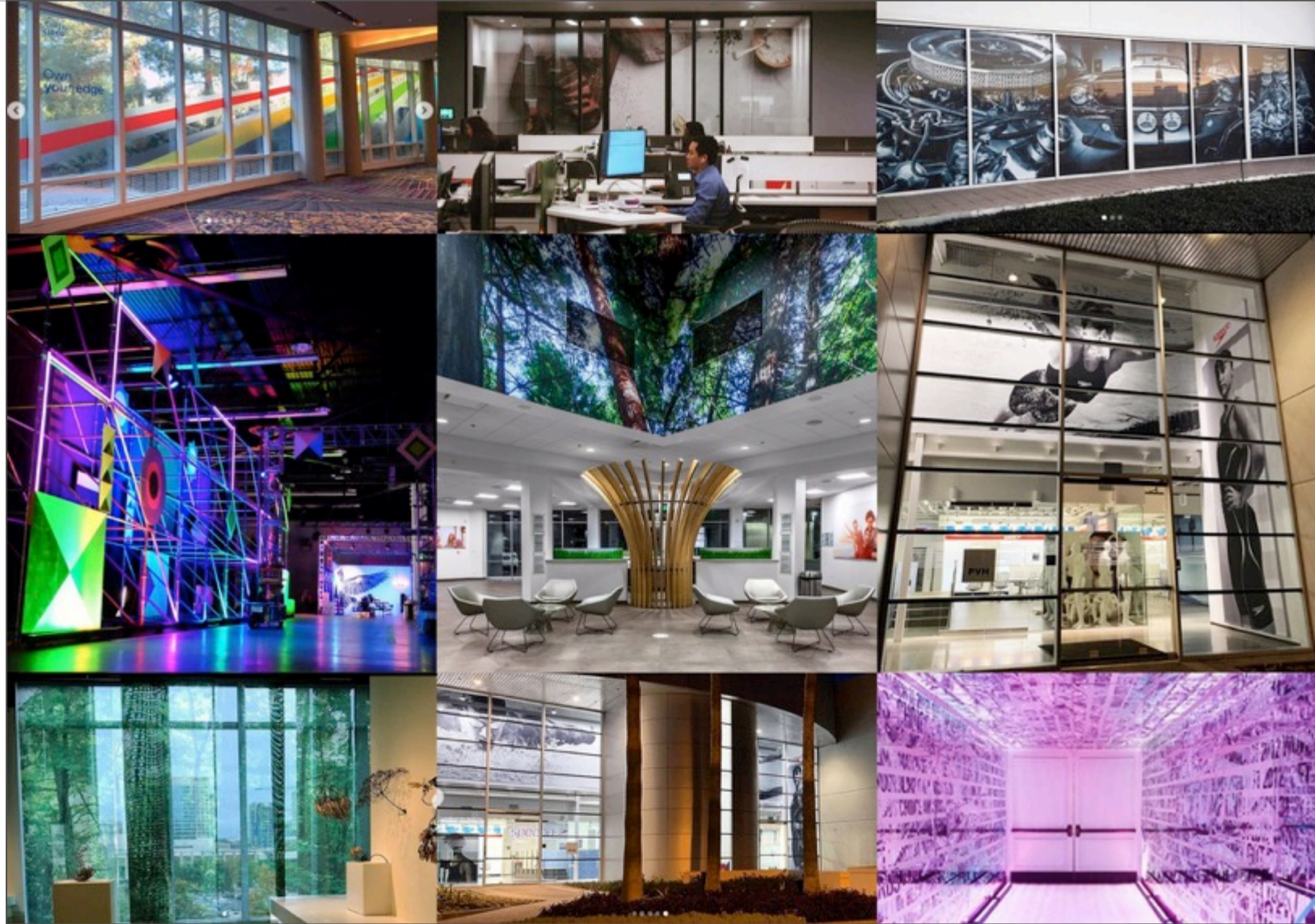
PANTONE 2164 C	PANTONE 4280 C	PANTONE 7748 C	PANTONE 7604 C	PANTONE 697 C
-------------------	-------------------	-------------------	-------------------	------------------

Fabrication

- The artist team will design, test-proof and supervise the fabrication and installation.
- SuperColor Digital will print, fabricate, deliver all printed artwork panels to the site at SFO.



Super Color Digital



Immersive Experience

Continuous City provides an immersive experience for travelers to see themselves reflected in the city's dynamic past and present as they pass to and from their destination.



Maintenance

- The final layer of safety glass installed and sealed with silicone protects the interior of the artwork from outside elements and serves as a protective glass barrier that can be easily cleaned & maintained.



Continuous City

Historic photographs and architectural elements curated, selected then recombined to capture the essence of San Francisco. Resulting in a unique yet local impression of place - at once familiar, but portrayed in an entirely new way that reflects San Francisco's vibrant community through its history, architecture and natural landscape.



Thank you

Stacey Carter & Derek Lynch



Historic Photograph Credits



1. Digging out buried steam shovel. [Ocean Shore Railway. Unidentified location.] 1906. JLP 479 Alb. 41 #05418, Jack London Photographs and Negatives, Huntington Digital Library, The Huntington Library, San Marino, California
2. *Baker St Hill, San Francisco, CA 1903* by Willard E. Worden. Worden, Willard E. Baker St Hill. San Francisco, Calif: Willard E. Worden, 1903. Print. California Hist. Room (CALIF) Picture Collection, California State Library, Sacramento, CA. *Note: View of Baker Street hill showing trolley car being pulled by steam dummy up unpaved road. Buildings visible at bottom, top and some on hill, rest is open land. One of buildings has sign, "Meyer's Villa, wines, liquors, cigars".*
3. Greenwich St. Between Sansome & Montgomery Sts., Oct 11, 1904 [Greenwich St. Between Sansome & Montgomery Sts., Oct 11, 1904. *Turrill & Miller (Marilyn Blaisdell Collection / Courtesy of a Private Collector) OpenSFHistory / wnp37.10083.jpg* Western Neighborhoods Project / OpenSFHistory.org *Note: Houses on steep eastern side of Telegraph Hill.*
4. Wittlock, A.J., Photographer, March 1940. "NORTH SIDE, EAST OF MONTGOMERY STREET - Telegraph Hill (Houses), Union Street, San Francisco, San Francisco County, CA" Photograph, Library of Congress Prints and Photographs Division, Washington, D.C. (HABS CAL,38-SANFRA,127—1)
5. Hyde St. and Chestnut to Bay, 11/9/33, 1933 Horace Chaffee, for the SF Department of Public Works. <https://opensfhistory.org/Display/wnp26.083.jpg> Western Neighborhoods Project / OpenSFHistory.org
6. Panorama of San Francisco, Filbert and Van Ness Streets, panoramic negative, no date, circa 1910 possibly. Image courtesy of SCRAP, non-profit creative reuse & arts education center, San Francisco, CA www.scrap-sf.org
7. Wittlock, A.J., Photographer, March 1940. "SOUTH SIDE, EAST OF MONTGOMERY STREET (Frame House) - Telegraph Hill (Houses), Union Street, San Francisco, San Francisco County, CA" Photograph, Library of Congress Prints and Photographs Division, Washington, D.C. (HABS CAL,38-SANFRA,127—2)