

**Vicinity Map**



# Alameda Creek Diversion Dam Fish Passage Facilities

- Building Location:** The proposed two buildings are located north of the SFPUC Calaveras Dam. One building is a Control Equipment Building and the other is a Electrical/Battery Building.
- Project Size:** The total building area of the Control Equipment Building is approximately 500 square feet. (16' x 30')  
The total area of the Electrical/Battery Building is approximately 280 square feet. (16' x 17")  
Roof Height varies from 10'-0" above finished floor to 13'-0" to top of roof.
- Proposed Building Materials:** Prefabricated building system, board form concrete exterior walls, corrugated metal siding panels, corrugated metal roof panels, and translucent roof skylights
- Design Intent:** To provide simple and inexpensive enclosures for electrical equipment and site maintenance equipment that are "contemporary" in design and responsive to the existing site features and the proposed fish passage facility. The enclosure shall minimize energy usage and incorporate sustainable design practices.  
  
Proposed Sustainable Design Goals include:  
  
Heat Island Effect (Use of materials with recommended solar reflectance index)  
  
Reduced Power Input (Use of daylighting devices in lieu of artificial lighting)  
  
Materials Reuse (Use of building materials with recycled content)

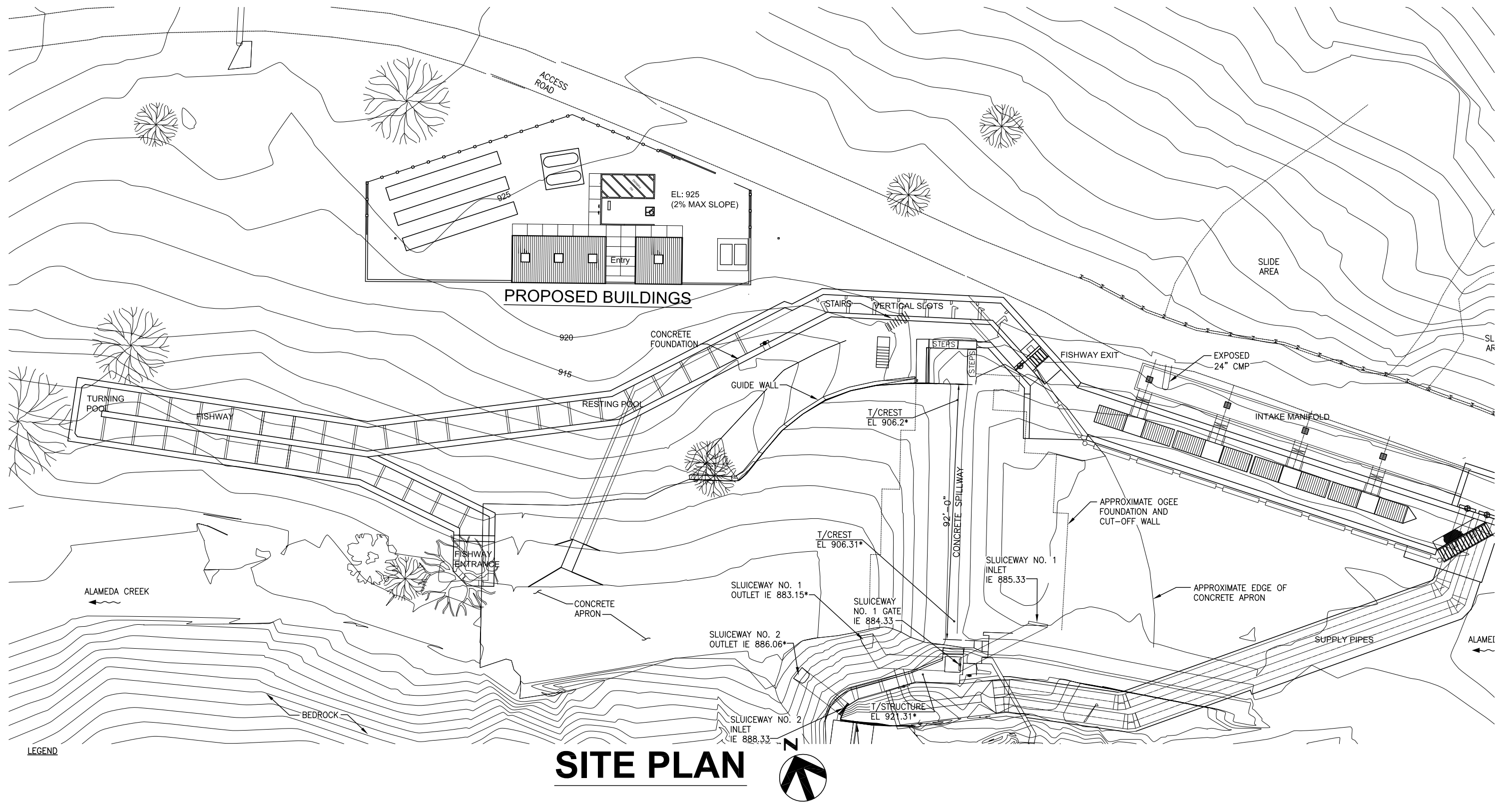




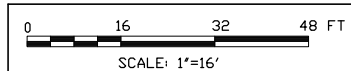
Site Aerial Photo



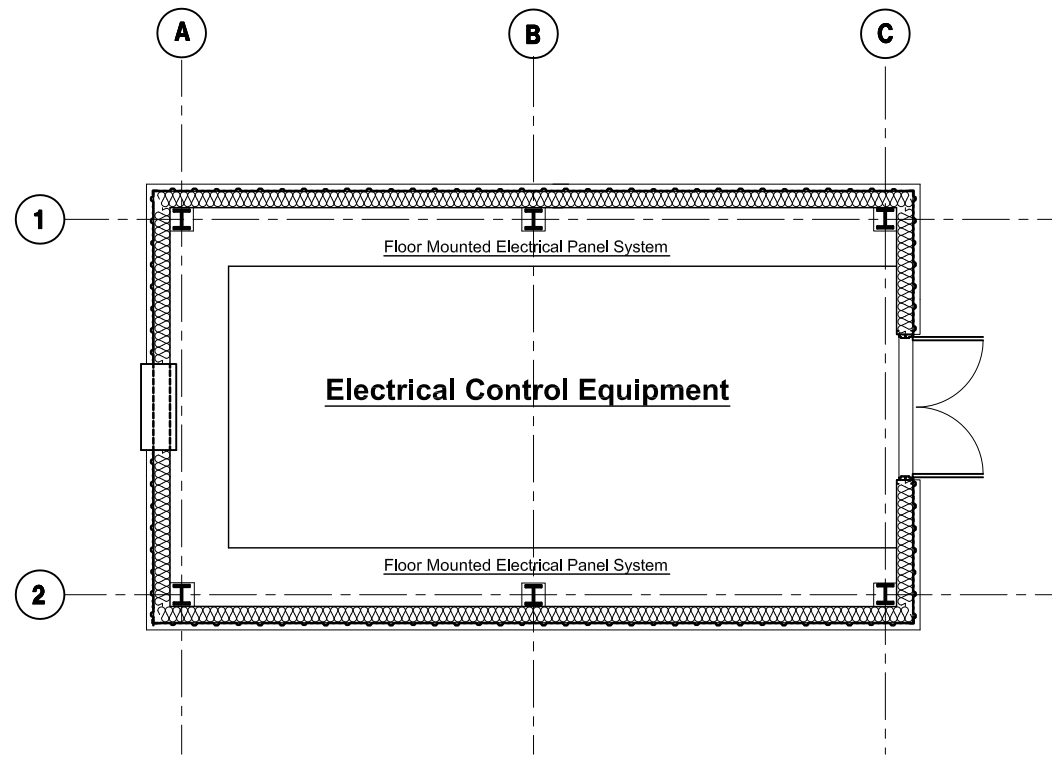




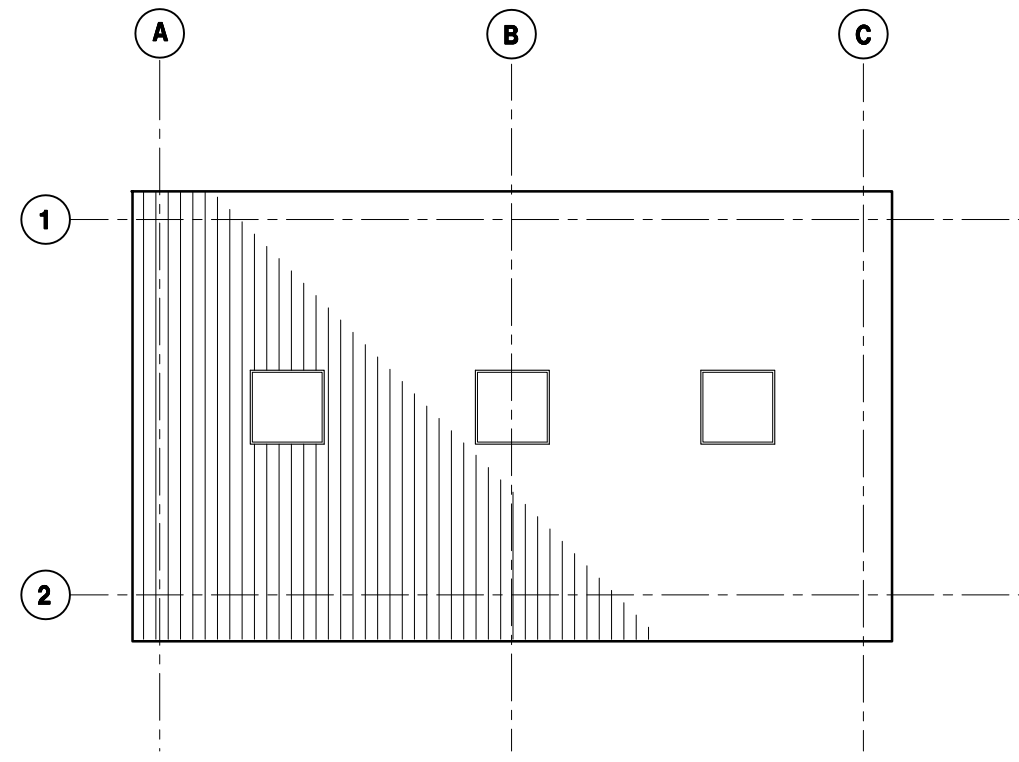
# SITE PLAN



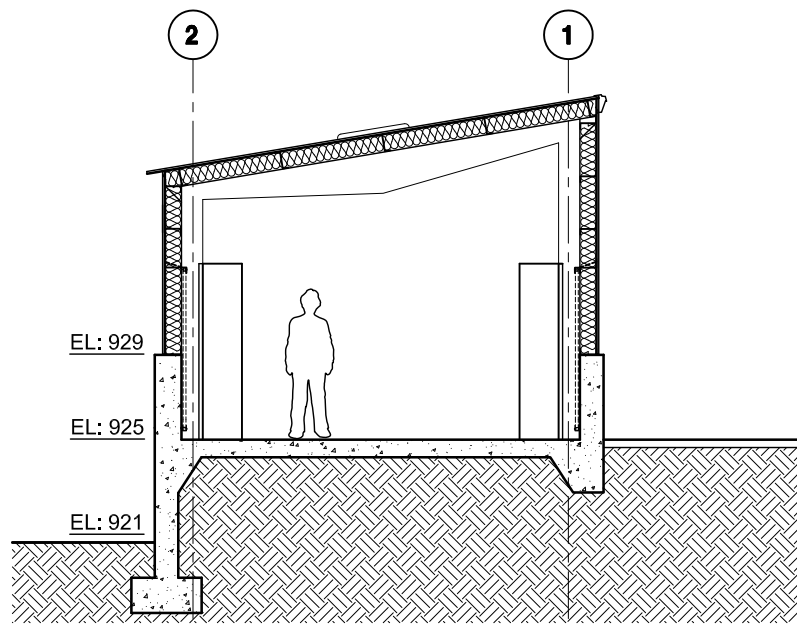
## Site Plan



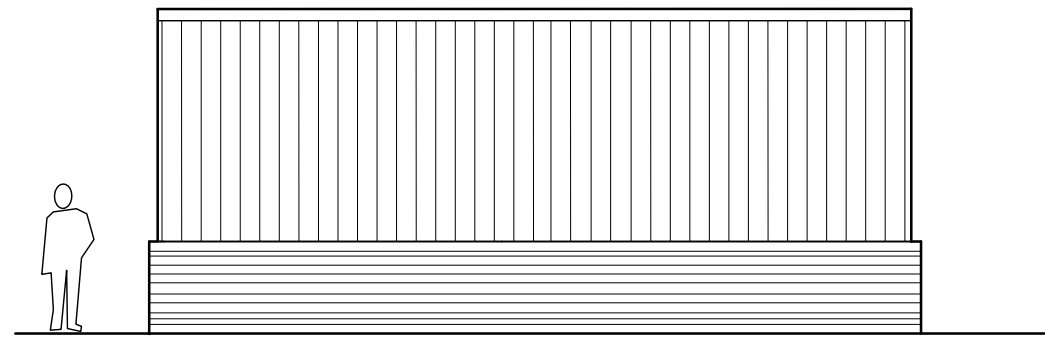
**Floor Plan**



**Roof Plan**

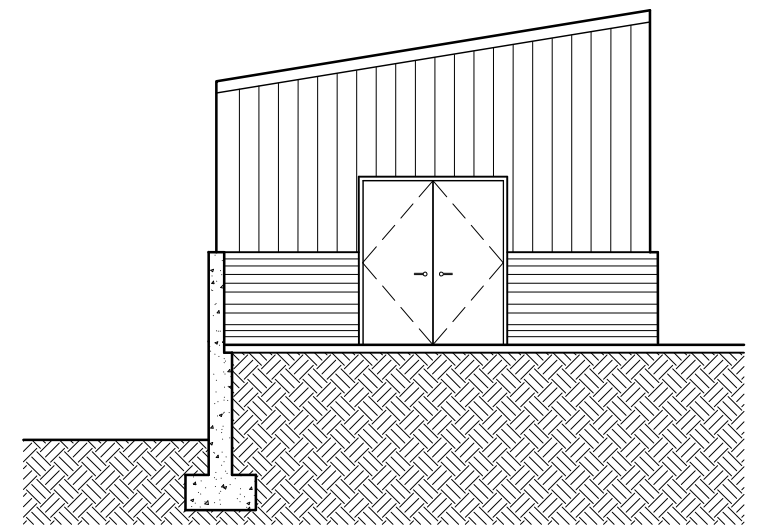


**Section**

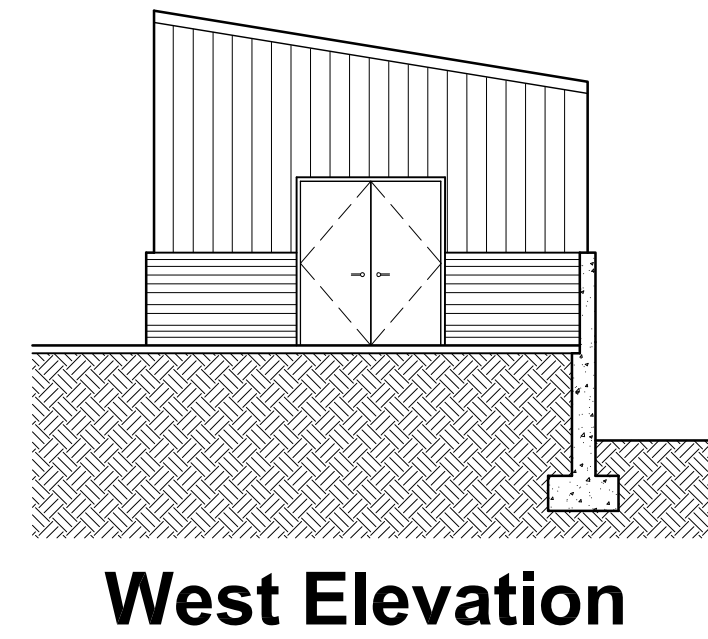
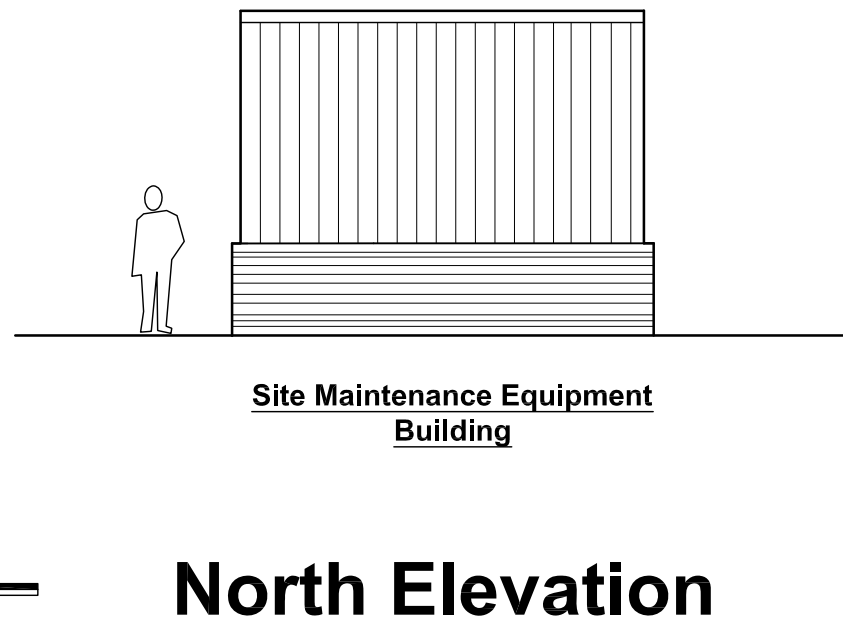
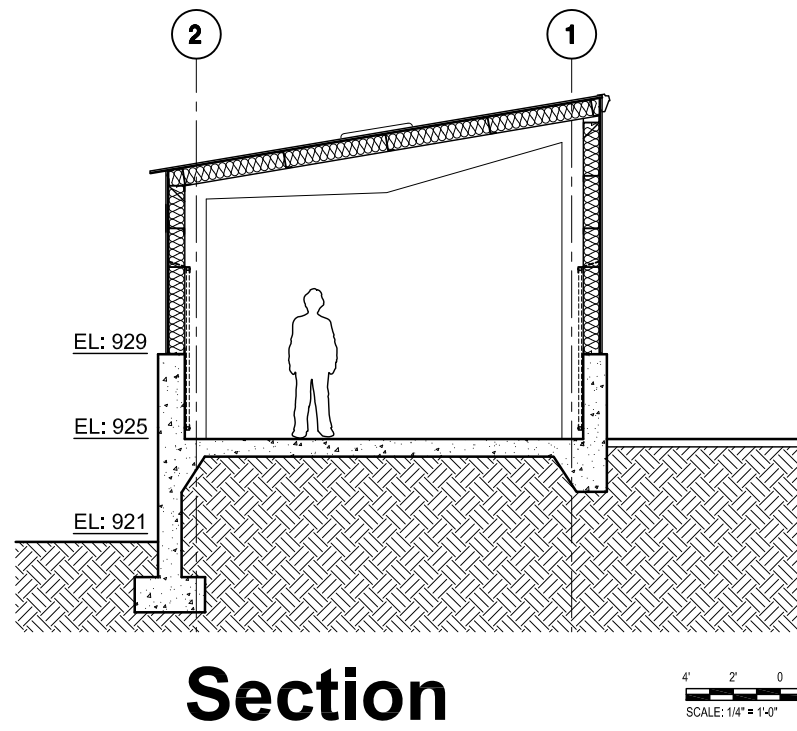
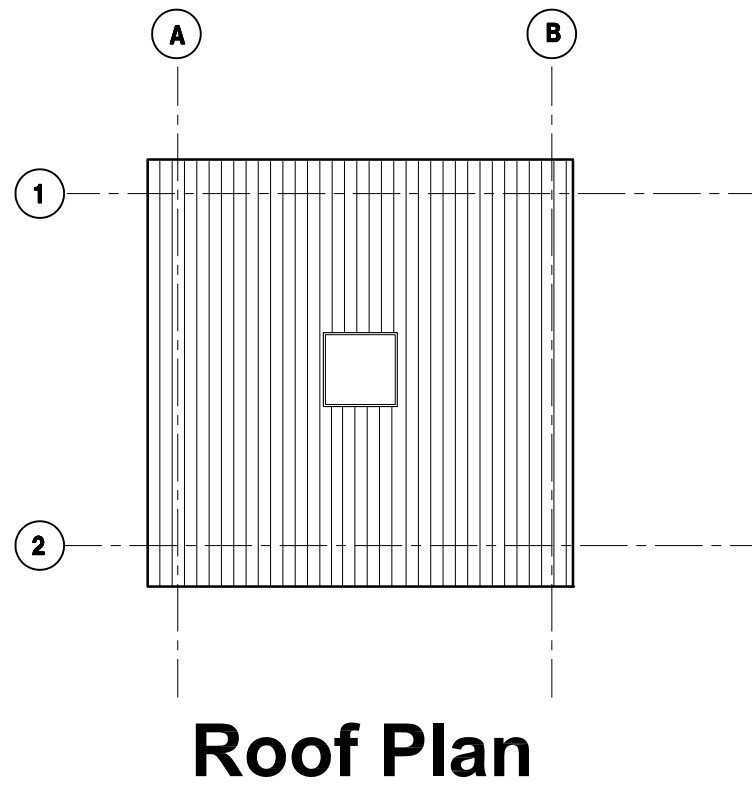
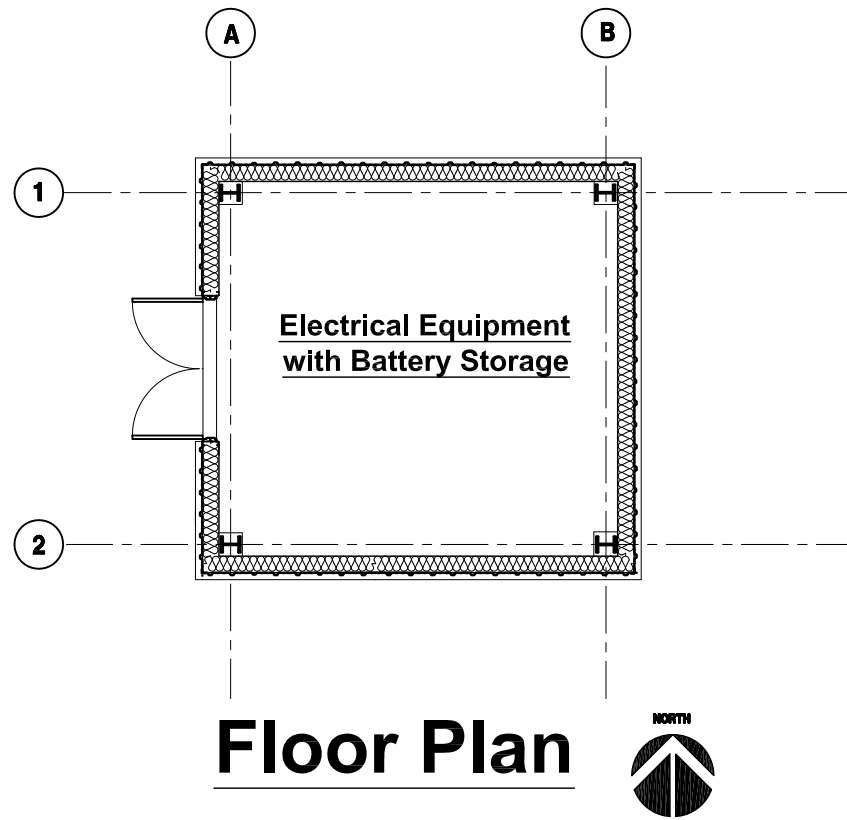


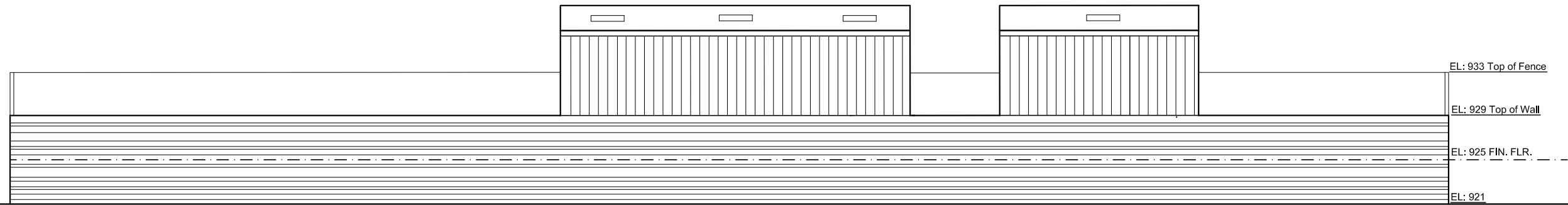
**Electrical Equipment Building**

**North Elevation**



**East Elevation**

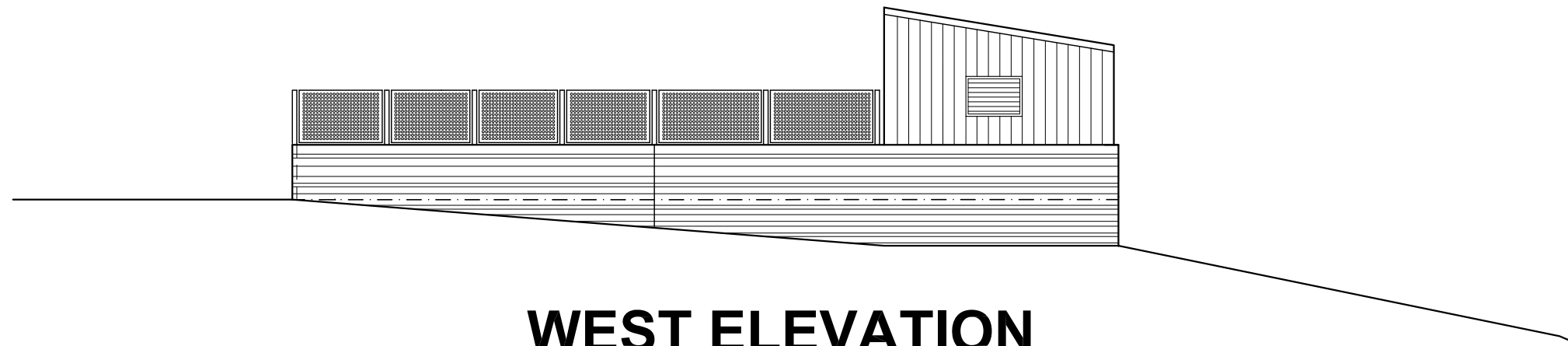




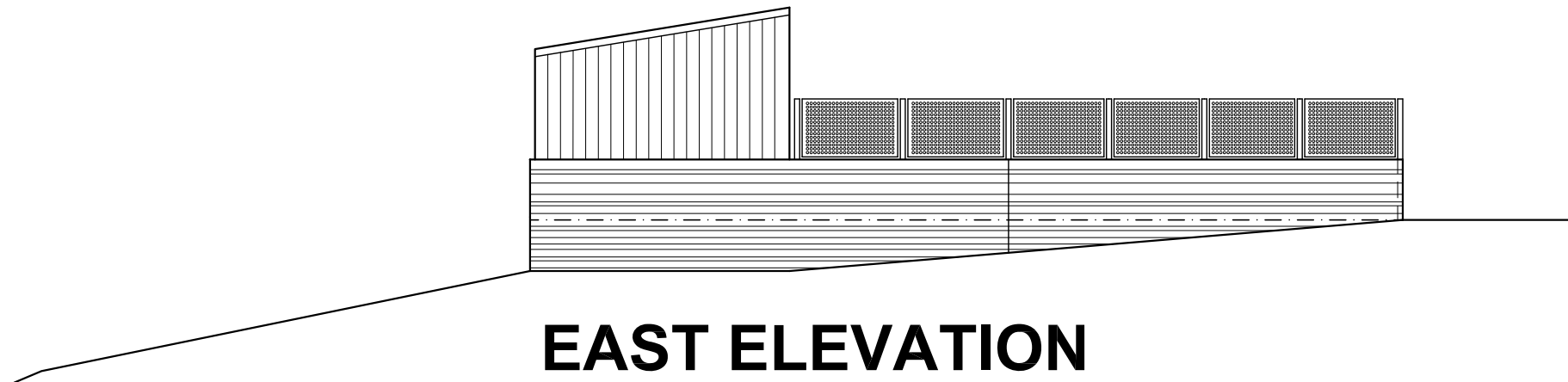
**Control Equipment  
Building**

**Electrical/Battery Building**

# SOUTH ELEVATION



# WEST ELEVATION



# EAST ELEVATION





**Available Colors  
Galvanized Steel Panels  
with Galvalume (Kynar 500) Finish**



**Board Form Concrete**



**Fence**



**Corrugated Metal Siding**



**Fence Detail**