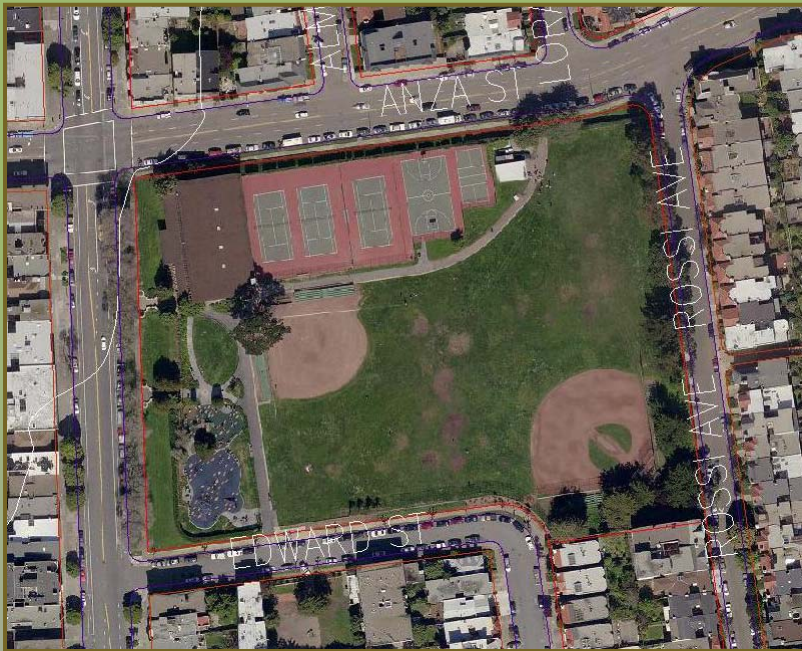


# Clean and Safe Neighborhood Parks Bond, Neighborhood Parks Project

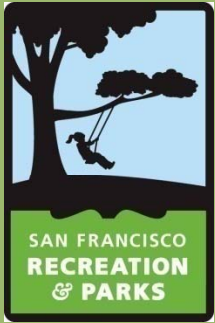
## Rossi Playground

## Restroom Replacement Project



# CIVIC DESIGN PHASE III/III

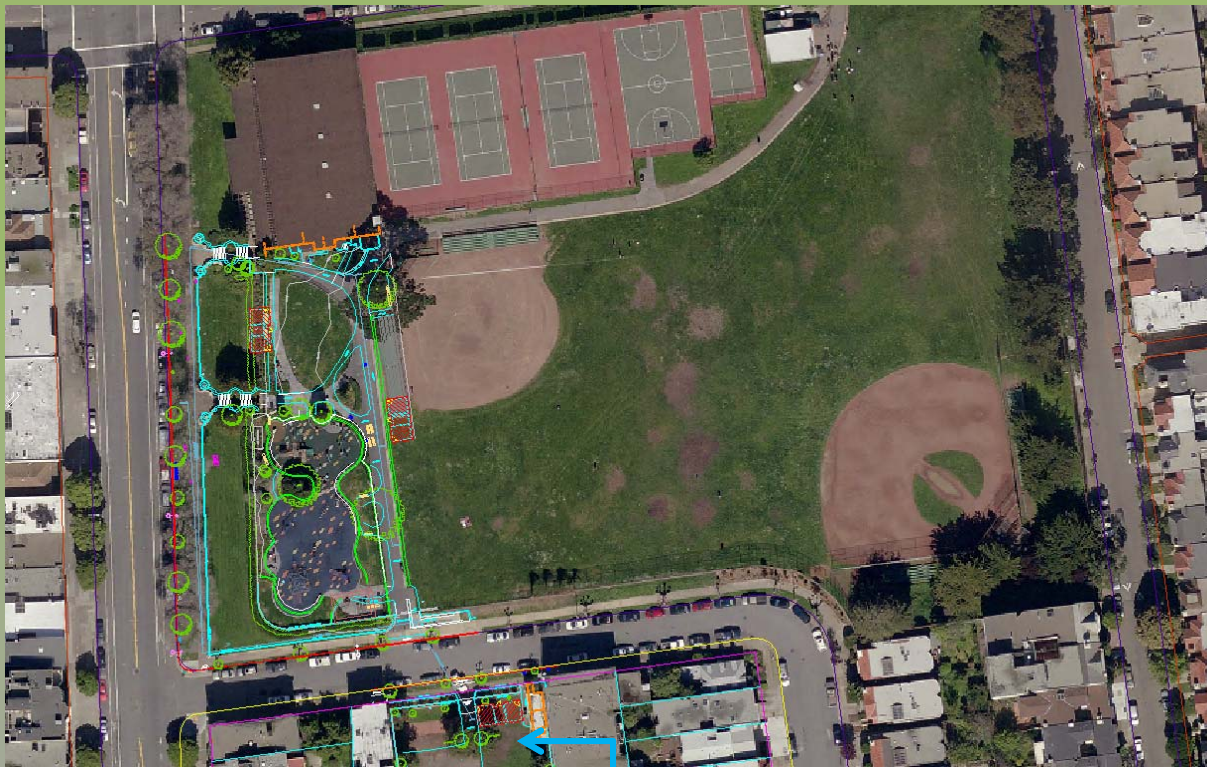
April 2013



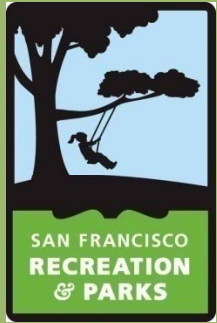
# Clean and Safe Neighborhood Parks Bond, Neighborhood Parks Project

## Rossi Playground Restroom Project

### Rossi Restroom Bldg Location



Annex Location

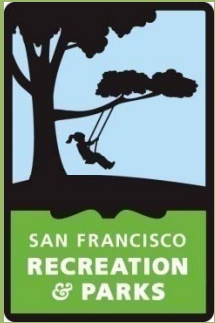


# Clean and Safe Neighborhood Parks Bond, Neighborhood Parks Project

## Rossi Playground Restroom Project

### Neighborhood Context

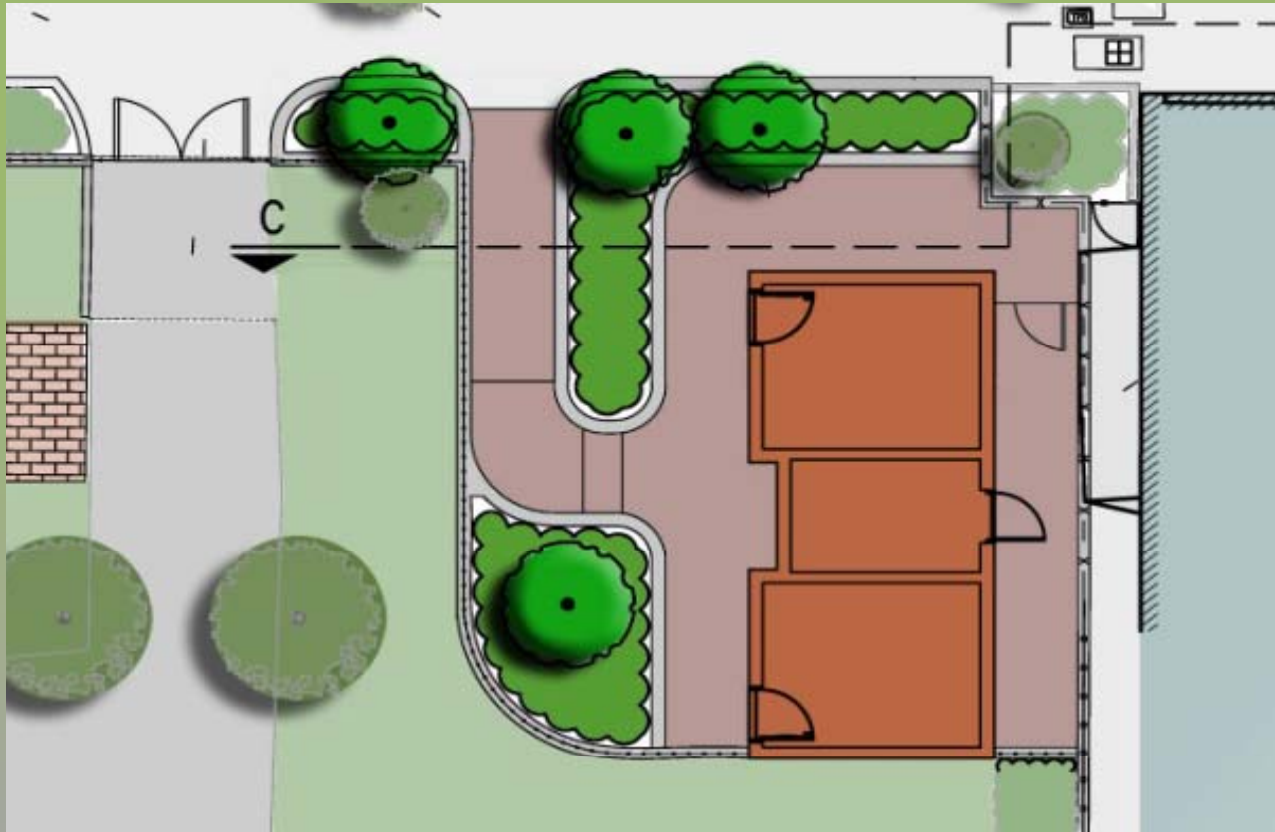




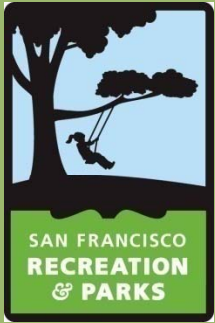
# Clean and Safe Neighborhood Parks Bond, Neighborhood Parks Project

## Rossi Playground Restroom Project

### Preferred Fence Layout



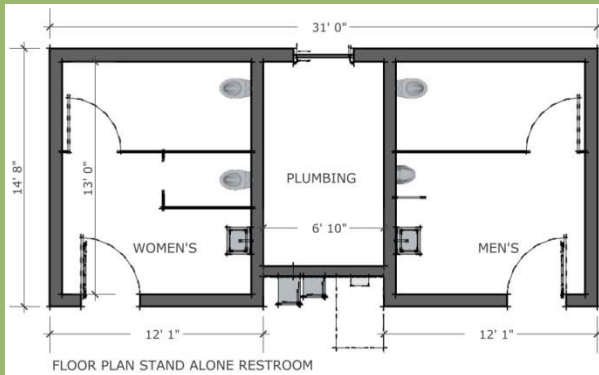
Fence @ Front



# Clean and Safe Neighborhood Parks Bond, Neighborhood Parks Project

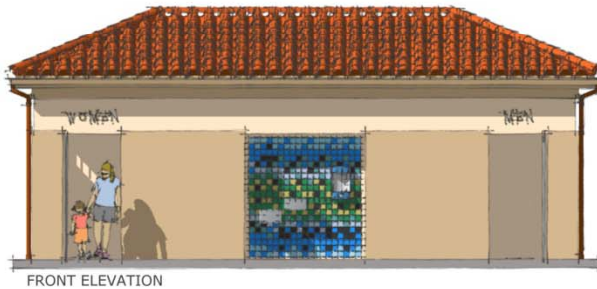
## Rossi Playground Restroom Project

### Proposed Rossi Restroom Bldg: "Traditional" Design



#### ROSSI PLAYGROUND RESTROOMS DESIGN DEVELOPMENT

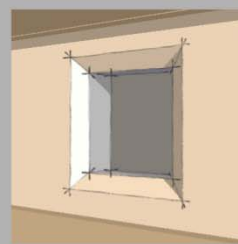
- PUBLIC RESTROOMS,  
450 SF ESTIMATED AREA:
- DESIGN CRITERIA:
- INTEGRATION WITHIN THE NEIGHBORHOOD CONTEXT,
  - ACCESSIBILITY
  - USE OF NATURAL LIGHT & VENTILATION
  - FAMILIAR VOLUME & MATERIALS
  - WARM & HARMONIC COMPOSITION
  - EASY IDENTIFICATION



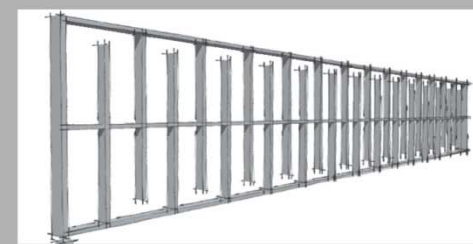
ALCOVE DETAIL - TILE ART WORK  
(COMMUNITY ART WORK)



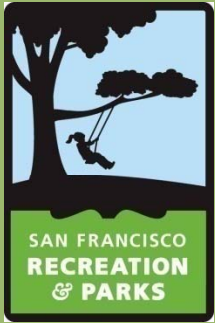
ID SIGN DETAIL  
(SURFACE MOUNTED)



GLASS BLOCK WINDOW DETAIL  
(12x12x4 GLASS BLOCK)



GALVANIZED METAL GATE  
DETAIL

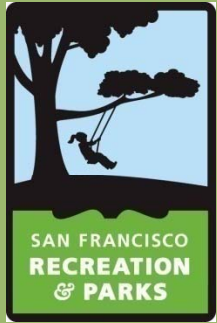


# Clean and Safe Neighborhood Parks Bond, Neighborhood Parks Project

## Rossi Playground Restroom Project

[Proposed Restroom at Existing Site](#)





# Clean and Safe Neighborhood Parks Bond, Neighborhood Parks Project

## Rossi Playground Restroom Project

### Site Materials



Concrete Paving



Asphalt Print Paving



Metal Picket Fence



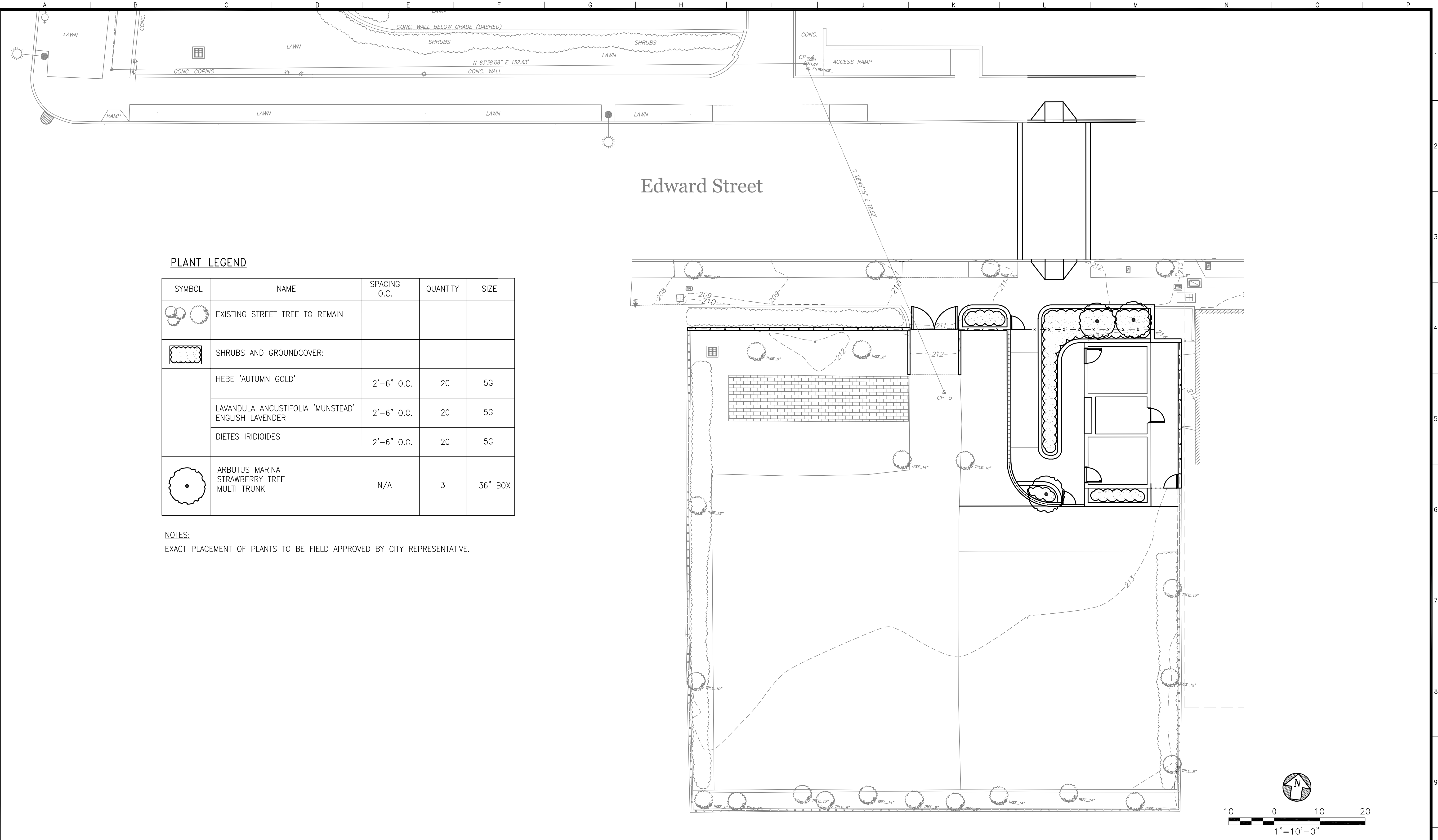
*Dietes vegeta*  
Fortnight Lily



*Ceanothus griseus*  
horizontalis



*Arbutus unedo*



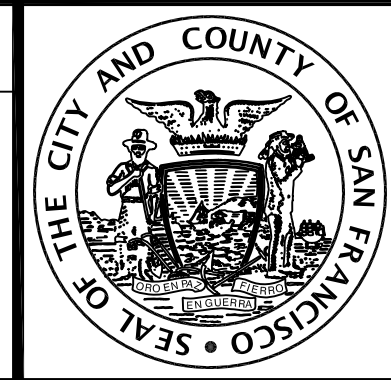
**PLANT LEGEND**

SYMBOL	NAME	SPACING O.C.	QUANTITY	SIZE
	EXISTING STREET TREE TO REMAIN			
	SHRUBS AND GROUNDCOVER:			
	HEBE 'AUTUMN GOLD'	2'-6" O.C.	20	5G
	LAVANDULA ANGUSTIFOLIA 'MUNSTEAD' ENGLISH LAVENDER	2'-6" O.C.	20	5G
	DIETES IRIDIODES	2'-6" O.C.	20	5G
	ARBUTUS MARINA STRAWBERRY TREE MULTI TRUNK	N/A	3	36" BOX

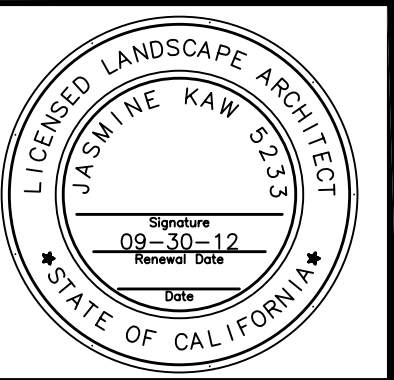
**NOTES:**  
EXACT PLACEMENT OF PLANTS TO BE FIELD APPROVED BY CITY REPRESENTATIVE.

NO.	DATE	DESCRIPTION	BY	APP.
TABLE OF REVISIONS				
THIS DRAWING WAS LAST MODIFIED: 09/17/12 15:51, BY: ebliiss				

REFERENCE INFORMATION  
& FILE NO. OF SURVEYS



**INFRASTRUCTURE DIVISION**  
DEPARTMENT OF PUBLIC WORKS  
CITY AND COUNTY OF SAN FRANCISCO



DESIGNED: DATE: JK 09/12  
DRAWN: DATE: EB/WH 09/12  
CHECKED: DATE:

APPROVED  
SECTION MANAGER DATE:  
DEPUTY DIVISION MANAGER DATE:  
DIVISION MANAGER DATE:

SCALE:  
1"=10'-0"  
SHEET OF SHEETS  
OF

**ROSSI PLAYGROUND RESTROOM  
RENOVATION**  
  
**PLANTING PLAN**

CONTRACT NO. 3097V  
DRAWING NO. L-7.0  
FILE NO.  
REV. NO.

Xrefs: V:\3097V\_Rossi\_PG\_Restrm\_Renovation\2\_Design\Working\_Drawings\EIA\B0E9\_TBD.dwg  
 \Base\_Plans\3097V\_L\_BASE.dwg  
 \Base\_Plans\EEXISTING.dwg  
 \Base\_Plans\2012-013\_Rossi-IPD\AT.dwg  
 Drawing Path: V:\3097V\_Rossi\_PG\_Restrm\_Renovation\2\_Design\Working\_Drawings\EIA\Streets\3097V\_L-7.0\_PLANTING.dwg  
 Model Units: Feet  
 Measurement Units are English  
 Plot Time: Tue, 18 Sep 2012 11:44am