

SFO West Field Cargo Facility

for Phase 1 Civic Design Review



Client: San Francisco International Airport

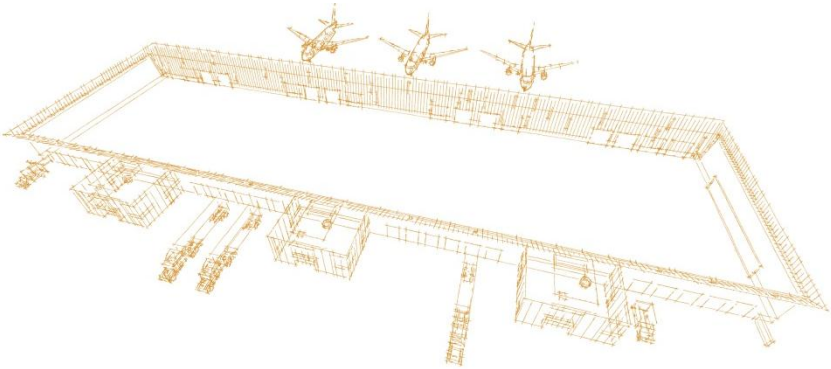
Site & Program:

The West Field Cargo Redevelopment Facility Project will replace and the 40 year old existing Cargo Building at the same location, with a larger and modernized facility. The total square footage is approximately 110,000sf of which approximately 90,000sf cargo space with a clear height of 26 feet.

The facility will be used by various client airlines to store and transfer cargo between trucks and planes. Airlines would rent portions of the building, according to their needs. The storage area is served by 3 individual 2-story office 'pods' abutting the cargo building to maximize the flexibility of the facility and the size of each rental segment. Each pod consists of a lobby, elevator, staircase, restrooms, janitorial and data/electrical closets.

Design Concept

The simplicity of the program is reflected in a the massing scheme and architectural expression of few parts: the grey metal box of the 'land' side is wrapped by a white wing on the 'air' side. A translucent clerestory (warmly colored) separates the two elements. Narrow openings of the same material create a playful pattern on the long 'wing' wall.



Design Concept & Information

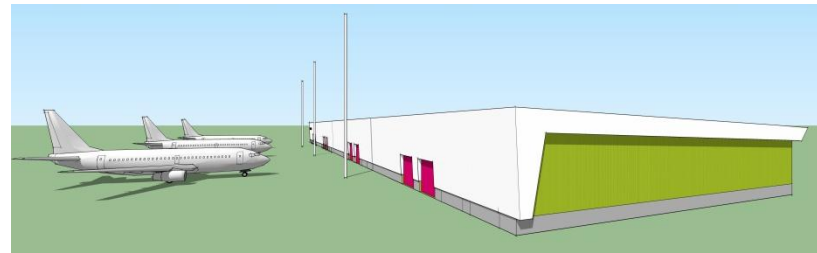
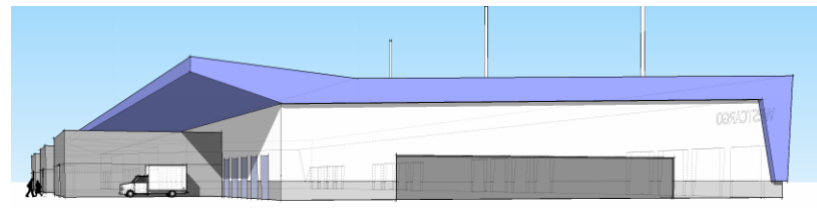
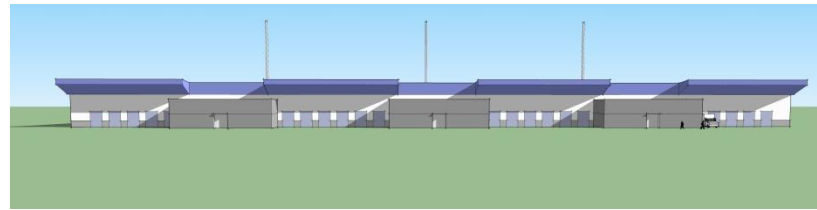
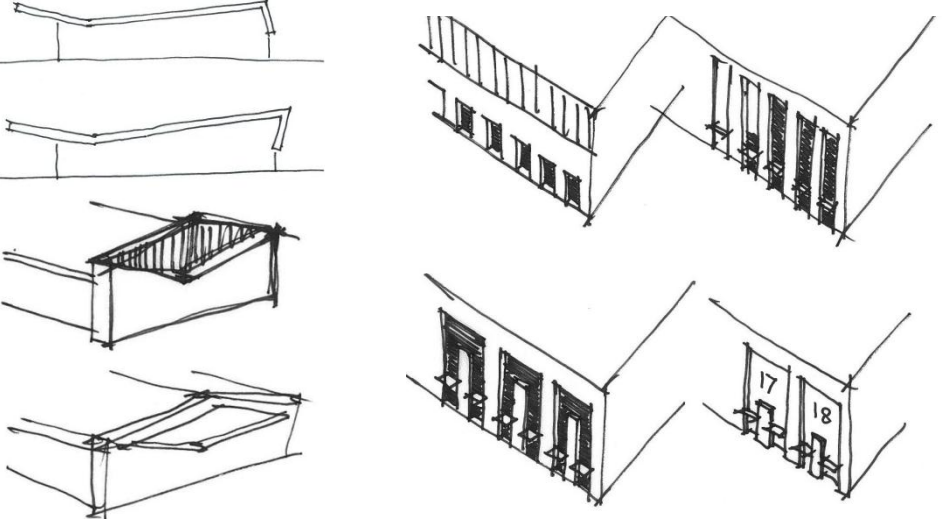
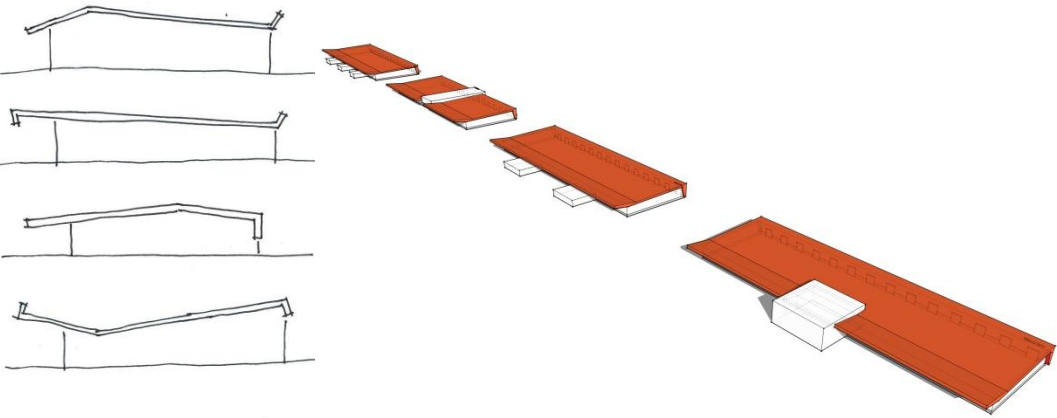
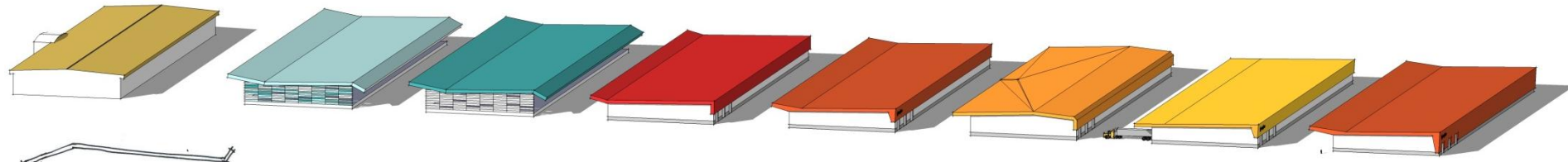
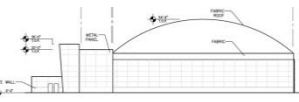


above: SFO context with contextualized model
 right: immediate context (runways, tarmac, cargo facilities, parking structure, sky)
 below: existing cargo building to be replaced

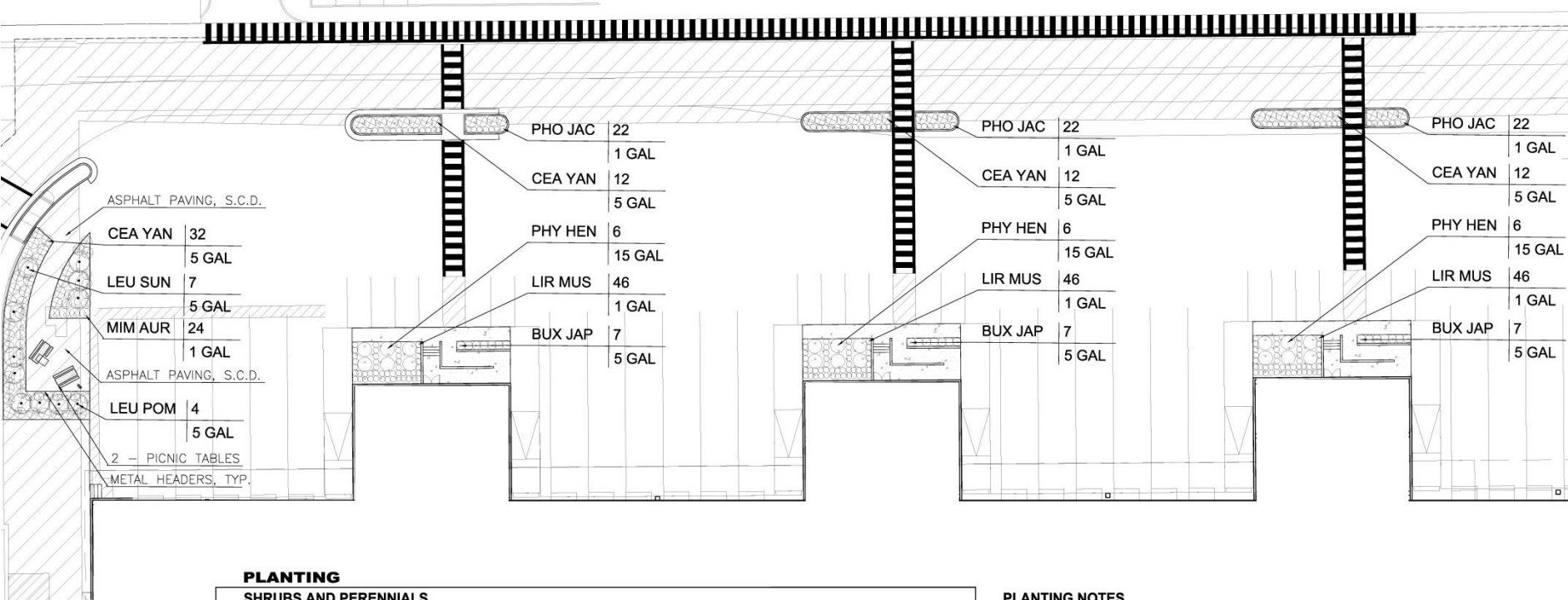




Precedents



Design Progression



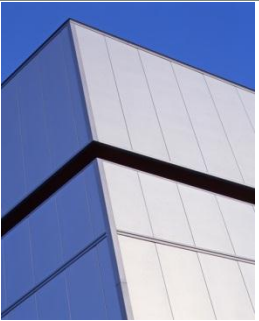
PLANTING

SHRUBS AND PERENNIALS							
SYM	SYM	LATIN NAME	COMMON NAME	SIZE	SF	QTY	SPACING
BUX JAP	○	BUXUS MICROPHYLLA JAPONICA	JAPANESE BOXWOOD	5 Gal	X	21	30" O.C.
CEA YAN	⊕	CEANOTHUS G. H. 'HURRICANE POINT'	HURRICANE POINT CA LILAC	5 Gal	X	68	36" O.C.
LIR MUS	○	LIRIOPE MUSCARI	LILY TURF	1 Gal	X	138	24" O.C.
LEU POM	⊙	LEUCADENDRON DISCOLOR 'POM POM'	POM POM FLAME TIPS	5 Gal	X	4	60" O.C.
LEU SUN	⊙	LEUCADENDRON HYBRID 'SAFARI SUNSET'	SAFARI CONEBUSH	5 Gal	X	7	72" O.C.
PHO JAC	○	PHORMIUM TENAX 'JACK SPRATT'	JACK SPRATT NEW ZEALAND FLAX	1 Gal	X	66	24" O.C.
PHY HEN	○	PHYLLOSTACHYS N. 'HENON'	HENON BAMBOO	15 Gal	X	18	6" + 8" O.C. SEE PLANS

PLANTING NOTES

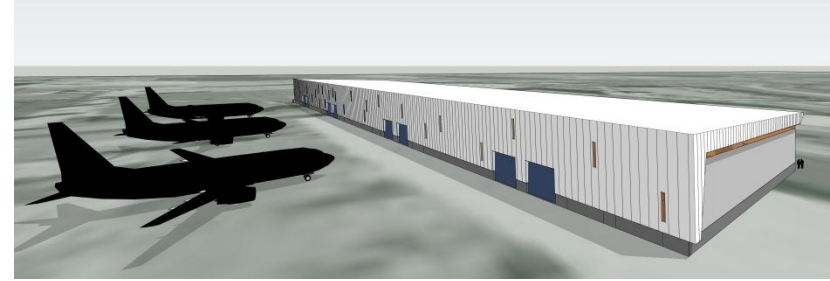
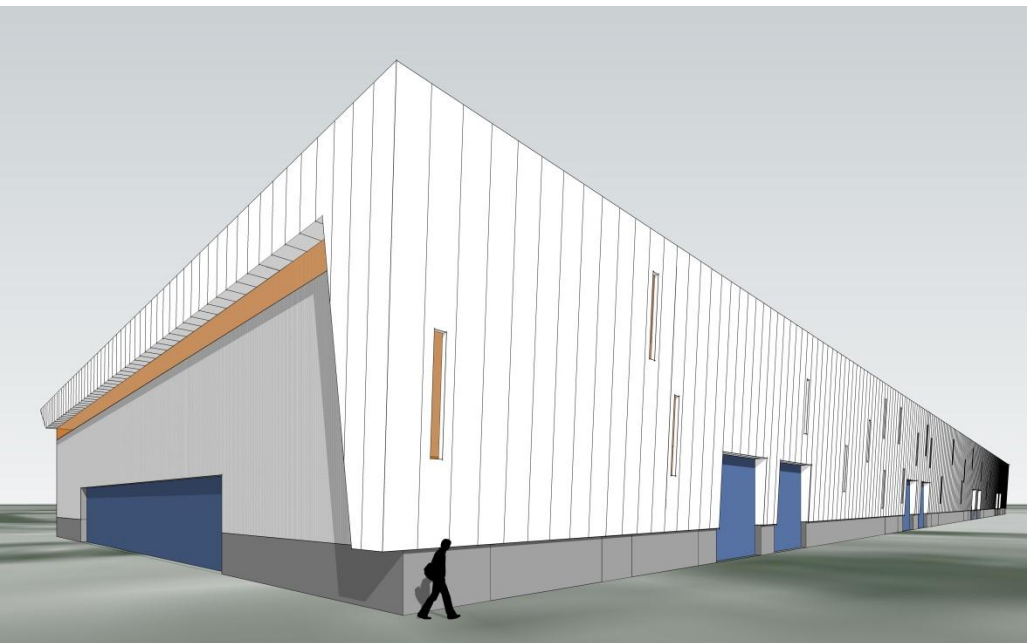
- 1) PLANTING SCHEDULE ARE APPROXIMATE COUNTS ONLY. CONTRACTOR IS RESPONSIBLE FOR FINAL PLANT QUANTITIES TO FULFILL THE DESIGN INTENT STATED ABOVE.
- 2) LOCATION OF TREES TO BE REVIEWED ON-SITE WITH LANDSCAPE ARCHITECT PRIOR TO INSTALLATION.
- 3) TRIANGULATE PLANTS FOR LAYOUT. HOLD HALF OF THE INDICATED SPACING DISTANCE FROM EDGE OF PAVING AND CURBS.
- 4) PROVIDE A 3" MULCH COVER AT ALL PLANTING AREAS.
- 5) FOR SHRUB PLANTING PROVIDE A PLANTING PIT THAT IS TWICE THE DIAMETER OF THE ROOTBALL. PROVIDE TWO FERTILIZER TABLETS PER SHRUB PER SPECIFICATIONS.
- 6) PLANTING MOCKUPS SHALL BE REQUIRED FOR TYPICAL LAYOUT OF PLANTING FOR ALL PLANTING AREAS. LANDSCAPE ARCHITECT TO REVIEW AND APPROVE IN FIELD.





Primary materials:

- White metal panel (wing)
- Grey metal panel(main body)
- Colored translucent polycarbonate
- Concrete (along base)
- Glass & silver metal panel (at pods)



Thank you!

