

17th & Folsom Park

Civic Design Review
Phase 1 - Conceptual Design
April 16, 2012



Mary Hobson, Project Manager
Recreation and Park Department

John Dennis, Landscape Architect
Andrea Alfonso, Landscape Architect
Department of Public Works

Susan Exline, City Planner
Planning Department



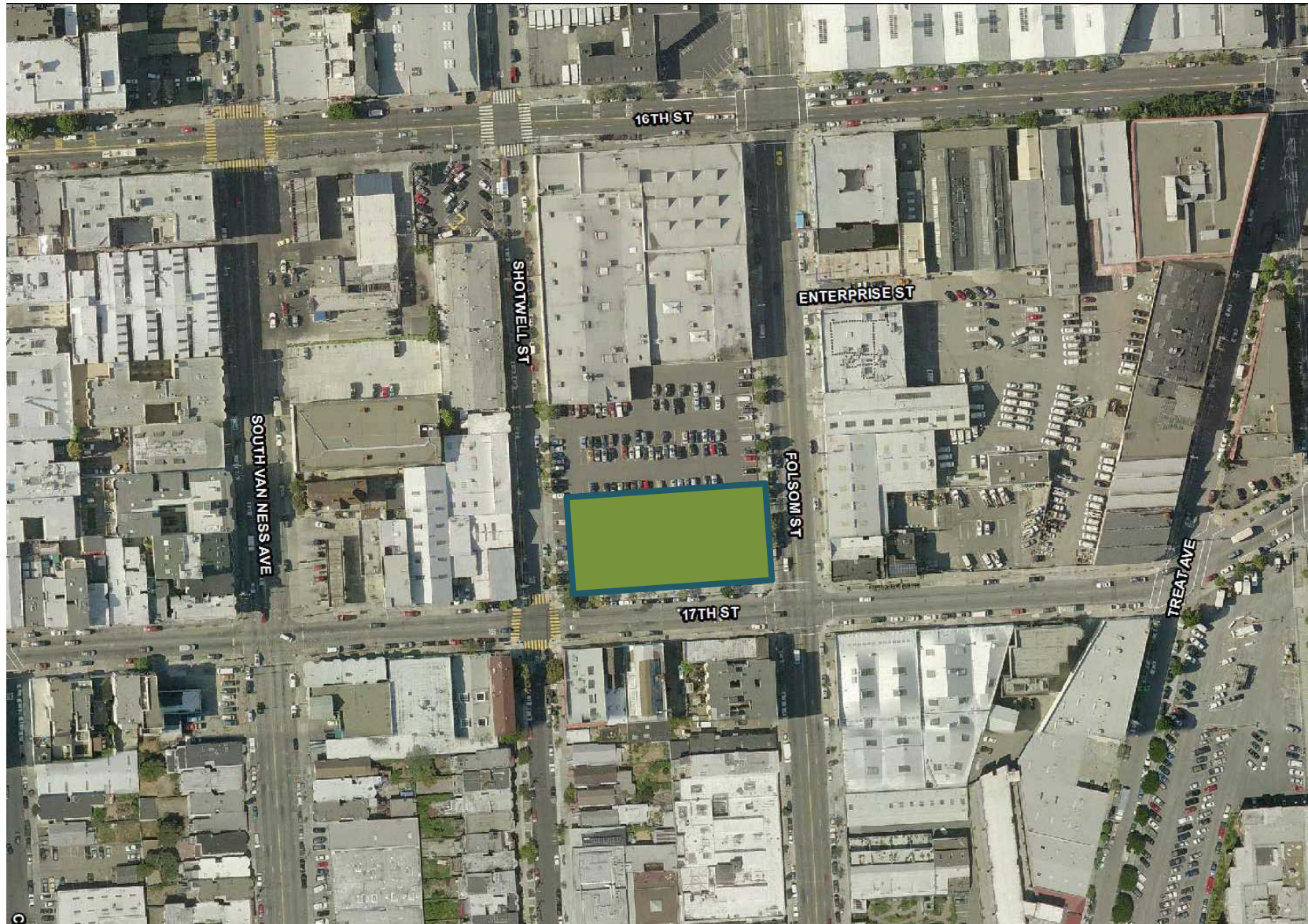
Outreach

- Partnering with People Organizing to Demand Environmental and Economic Rights (PODER)
- Community outreach began in August 2009 and continued through March 2012.
- 14 community meetings with over 300 participants



Community Meeting 1 [on-site]	8/15/2009	52 participants
Community Meeting 2 [Spanish Speakers]	1/12/2010	12 participants
Community Meeting 3	1/23/2010	50 participants + 20 children
Community Meeting 4 [on-site]	2/6/2010	60+ participants
Community Meeting 5	3/11/2012	36+ participants
Focus Group Meetings, 9 Total	Between 12/09-1/10	5-50 participants/mtg.





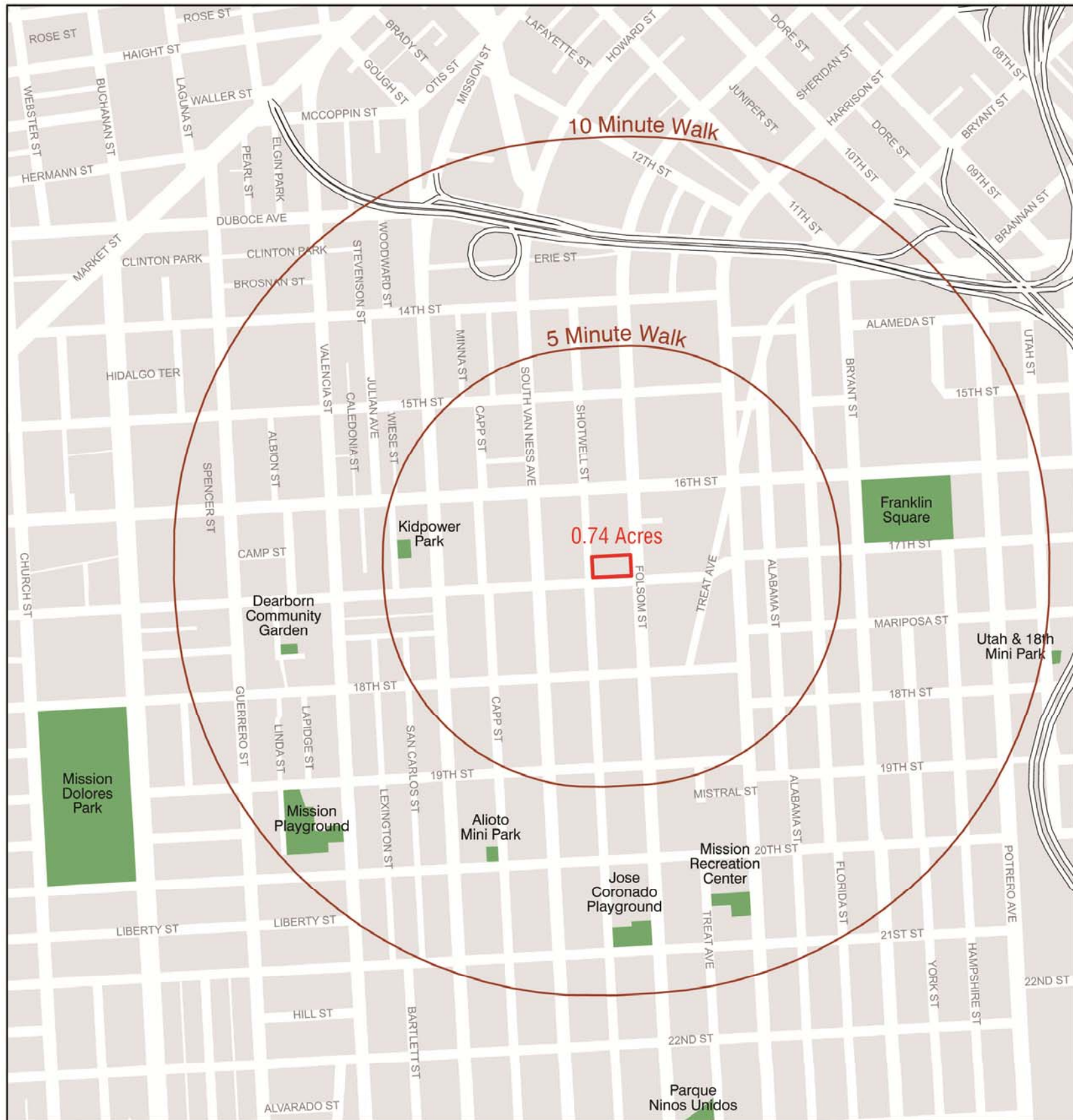
Parking Lot Site



17th & Folsom Park

Neighborhood Context

**CONSULTANT:
DEPARTMENT OF PUBLIC WORKS
LANDSCAPE ARCHITECTURE SECTION**



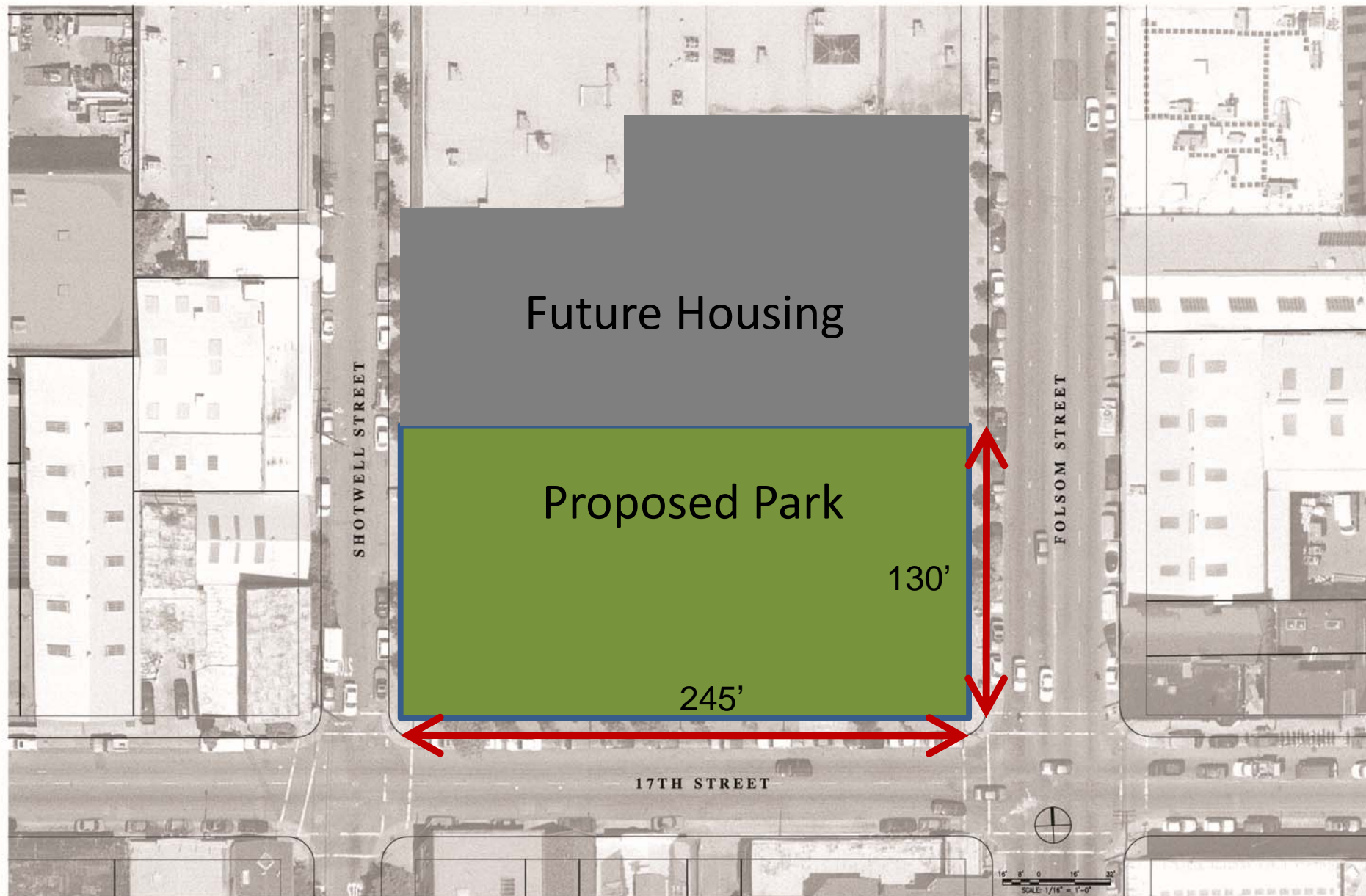
Vicinity Map
 ¼ mile = 5 minute walk
 ½ mile = 10 minute walk



17th & Folsom Park

Neighborhood Parks

CONSULTANT:
 DEPARTMENT OF PUBLIC WORKS
 LANDSCAPE ARCHITECTURE SECTION



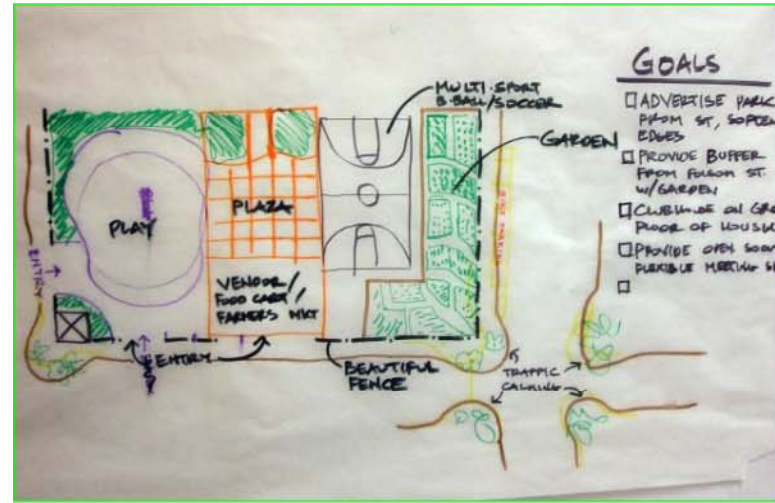
Site Zoning



17th & Folsom Park

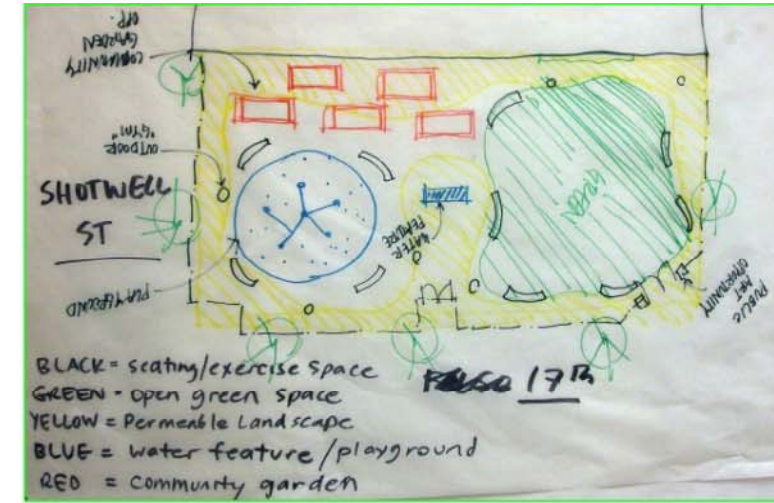
Existing Site

**CONSULTANT:
DEPARTMENT OF PUBLIC WORKS
LANDSCAPE ARCHITECTURE SECTION**



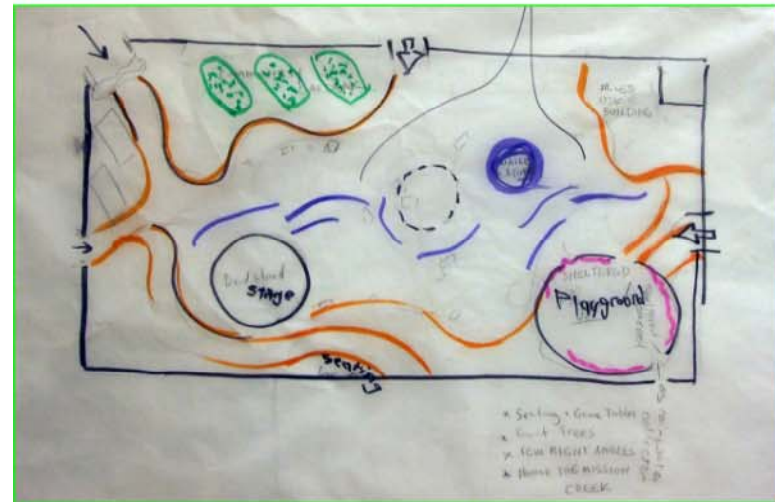
Group One:

- Group Values:
- Quiet space
 - Buffer noise from Folsom, site quieter elements on Shotwell side
 - Housing/Park Integration
 - Streetscape welcomes people to park
- Activities/Components:
- Basketball
 - Multi-use plaza for events
 - Community Garden
 - Sited on Folsom side as buffer to noise



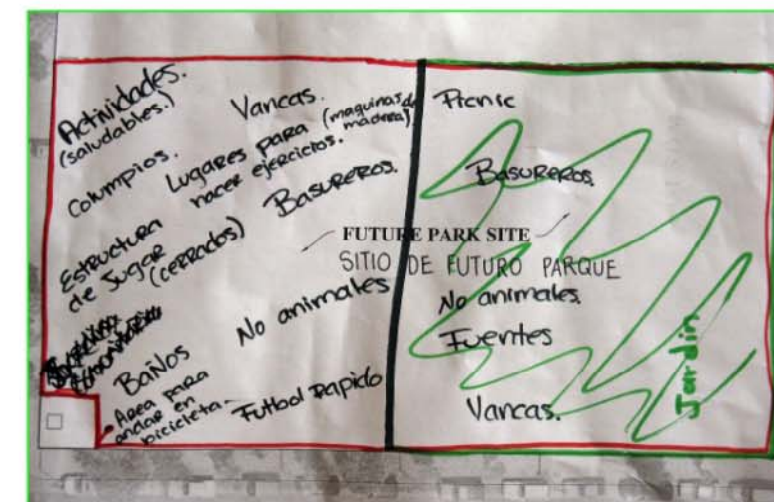
Group Four:

- Group Values:
- Maximum softscape- in hardscape vs. softscape
 - Sustainability
 - Systems for collecting water
 - Balance Kid and adult area
- Activities/Components:
- Playground (closer to Shotwell St)
 - Water feature
 - Path outside park
 - Outdoor performance area
 - Green Wall/ Green Gate
 - Community Entrance on Folsom at 17th Corner
 - Meandering path/ encourage adult fitness, walking
 - Fitness Stations (parcourse)
 - Focal point with Water Feature, Water as "white noise"
 - Seating along perimeter of Greenspace and playground
 - Permeable Fencing (public art component) around park
 - Multi-use flexible green space
 - Strategically placed public art
 - Hardscape plaza to welcome mobile food vendors
 - Create space for healthy food access directly to surrounding neighborhood
 - Community Garden and Education center



Group Two:

- Group Values:
- Place to Gather
 - No Right Angles in design
 - Sense of Community
 - Mixing demographic groups- Seniors, Children, Artists, Gardeners
 - Flexible spaces-not preprogrammed
 - Dogs on leash, but welcomed
 - Responsive to surrounding communities
 - Artistic elements
- Activities/Components:
- Entrance at 17th and Folsom, 3 other entrances at center of each side street
 - Bandstand /performance space near flexible space
 - Central Flex Space
 - Play Space
 - Mobile vs. permanent food kiosks
 - Honor Mission Creek
 - Fruit Trees
 - Artistic Benches by local artist
 - Community Path- Central path not paved , maybe decomposed granite moving through site along water.
 - Community Garden beds open if security permits along Folsom St side.
 - Water feature
 - Community Building



Group Five:

- Group Values:
- 50% green space
 - Bring folks together
 - Kids are priority, create place for them
 - No dedicated dog park
 - Open and accessible but secure (not closed at 4:00 pm)
- Activities/Components:
- Kid's space
 - Community Spacel
 - birthday parties
 - cultural events
 - picnic
 - BBQ
 - Dance



Group Three:

- Group Values:
- Place to gather
 - Sense of community
 - Mixing of demographics and groups- seniors, children, artists, gardeners, etc
 - Flexible spaces- not pre-programmed but able to serve a variety of uses
 - Enclosed (gated) for safety but low walls, more symbolic than divisive, with welcoming entrances
 - Dogs on leash, but welcomed
 - Representative of the diverse communities surrounding
 - Artistic, i.e. benches as sculpture by different local artist, etc.
- Activities/Components:
- Boulder seating, natural forms seating
 - Natural forms/ water feature to honor mission creek
 - Creek element lined with mosaic tiles
 - Open space components
 - Community Garden
 - Recreational Garden-A new kind of community Garden
 - Artistic fence, not an ordinary fence
 - Divided PG-Tots and teens
 - Trail
 - Environmental education components
 - Collect rainwater
 - Housing provides restrooms



Group Six:

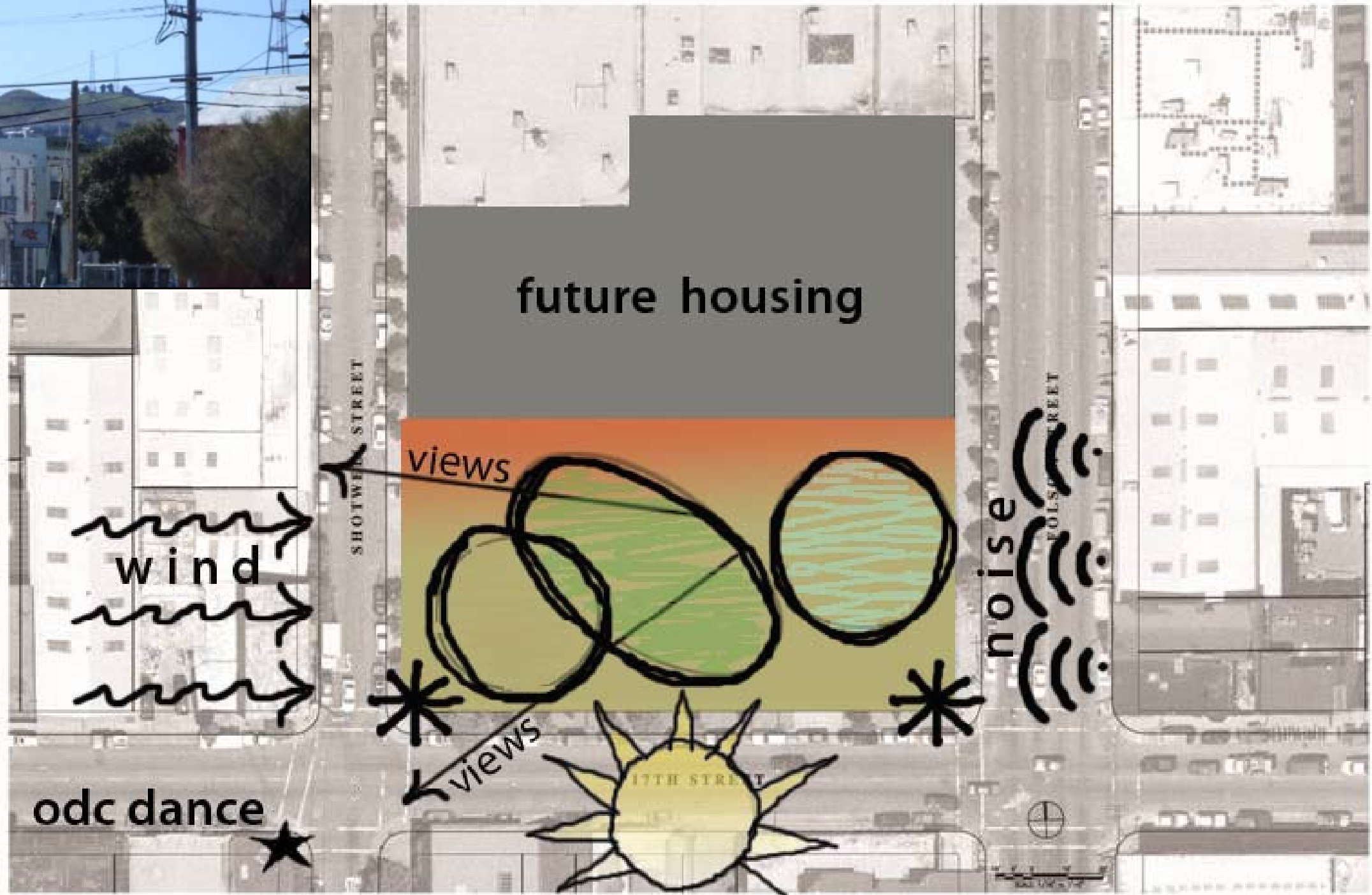
- Group Values:
- Flexible Community Space
 - Farm/ Open space
 - Sustainability/Environmental education
 - Non-traditional
 - Kids play area
 - Link to housing element
 - Move the Electrical pump
- Activities/Components:
- Fence set in-Wider Sidewalks
 - Non-traditional play space, elements
 - Farm/Open Community Garden
 - Worm farm, Composting, Rainwater collection
 - Community Flex Space
 - Bar/beer garden, Kiosks, Seating, "Tweet Tuesdays" food cart congregation space
 - Playground w/ Unusual play features/ educational elements
 - Merry go round, Water Pumps, Swings that create power for garden
 - Housing element link to park
 - Community room, Retail/Restaurant Cafe, Restrooms



17th & Folsom Park

Community Design Process

CONSULTANT:
DEPARTMENT OF PUBLIC WORKS
LANDSCAPE ARCHITECTURE SECTION



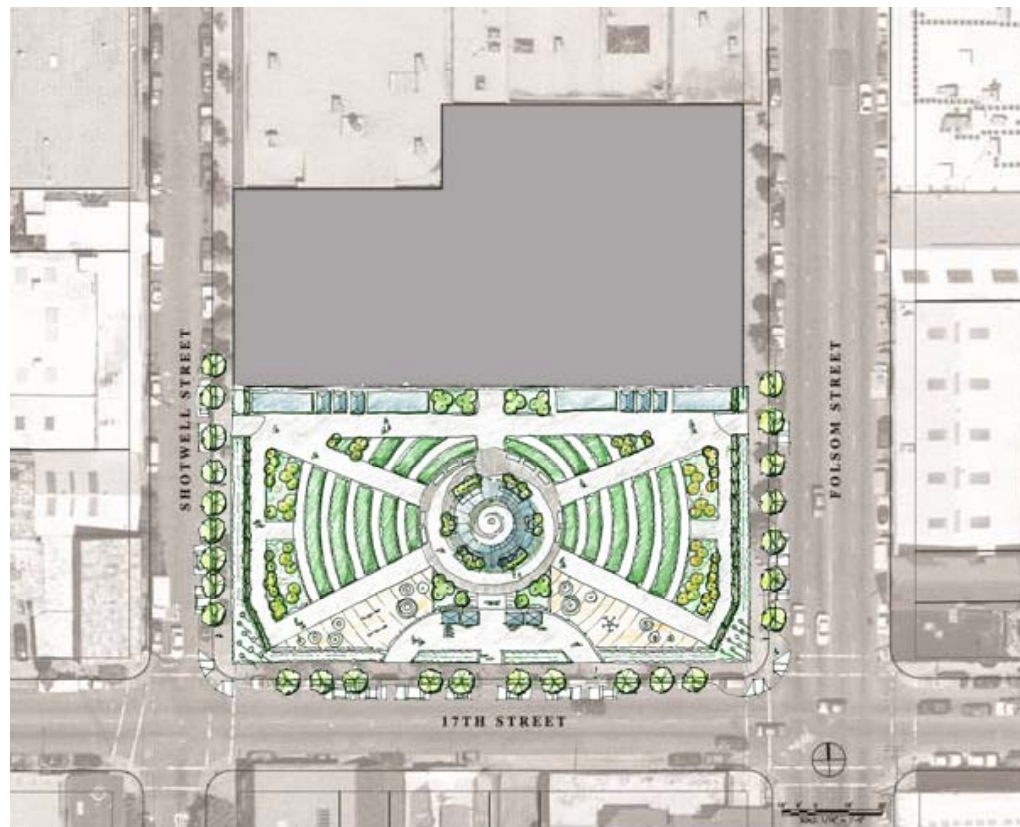
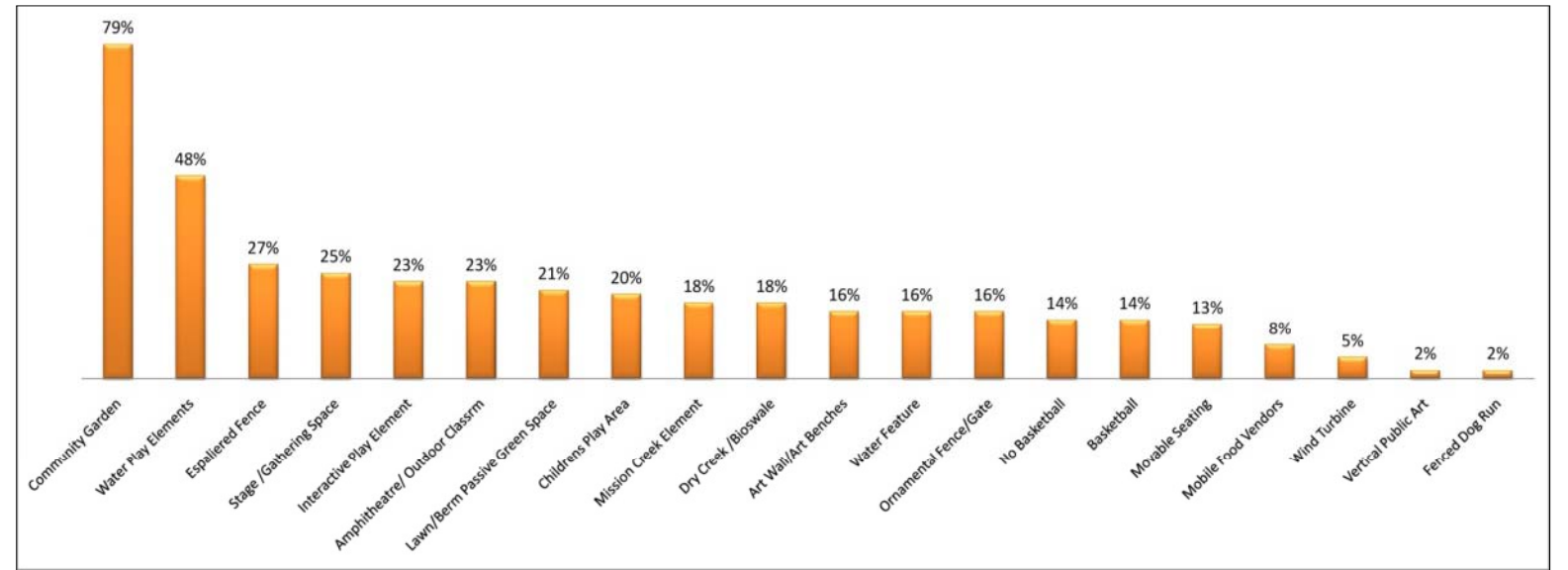
17th & Folsom Park

Concept Diagram

CONSULTANT:
DEPARTMENT OF PUBLIC WORKS
LANDSCAPE ARCHITECTURE SECTION



Berm / Water Plaza /Community Garden Option

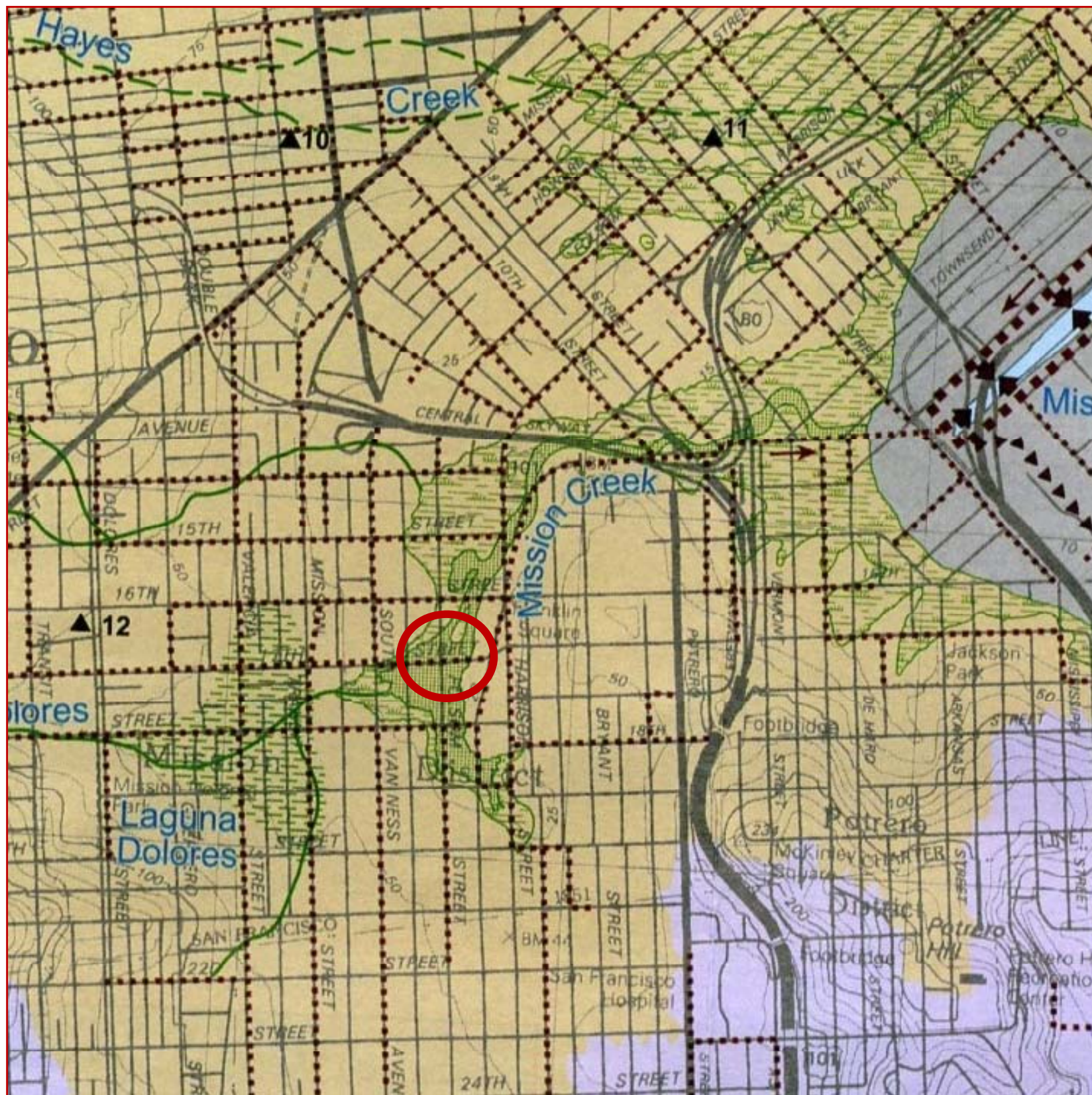


Community Garden Option



Lawn/ Outdoor Classroom/Community Garden Option





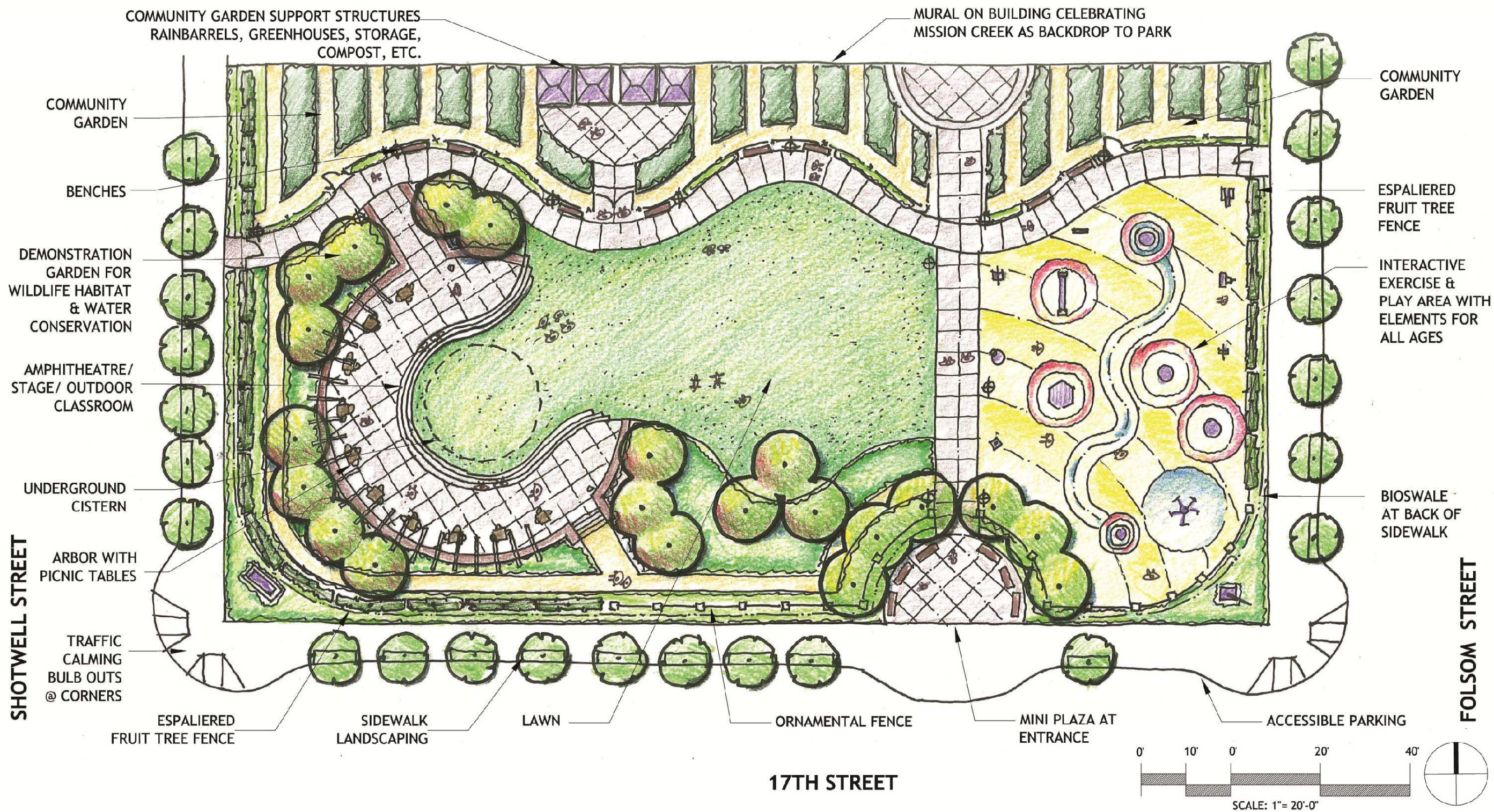
Historic Map:
Site alignment with Mission Creek



17th & Folsom Park

Underlying Design
Influence

CONSULTANT:
DEPARTMENT OF PUBLIC WORKS
LANDSCAPE ARCHITECTURE SECTION



17th & Folsom Park

Grant Concept Plan

CONSULTANT:
DEPARTMENT OF PUBLIC WORKS
LANDSCAPE ARCHITECTURE SECTION



17th & Folsom Park

Concept Plan

CONSULTANT:
 DEPARTMENT OF PUBLIC WORKS
 LANDSCAPE ARCHITECTURE SECTION



17th & Folsom Park

Community Garden

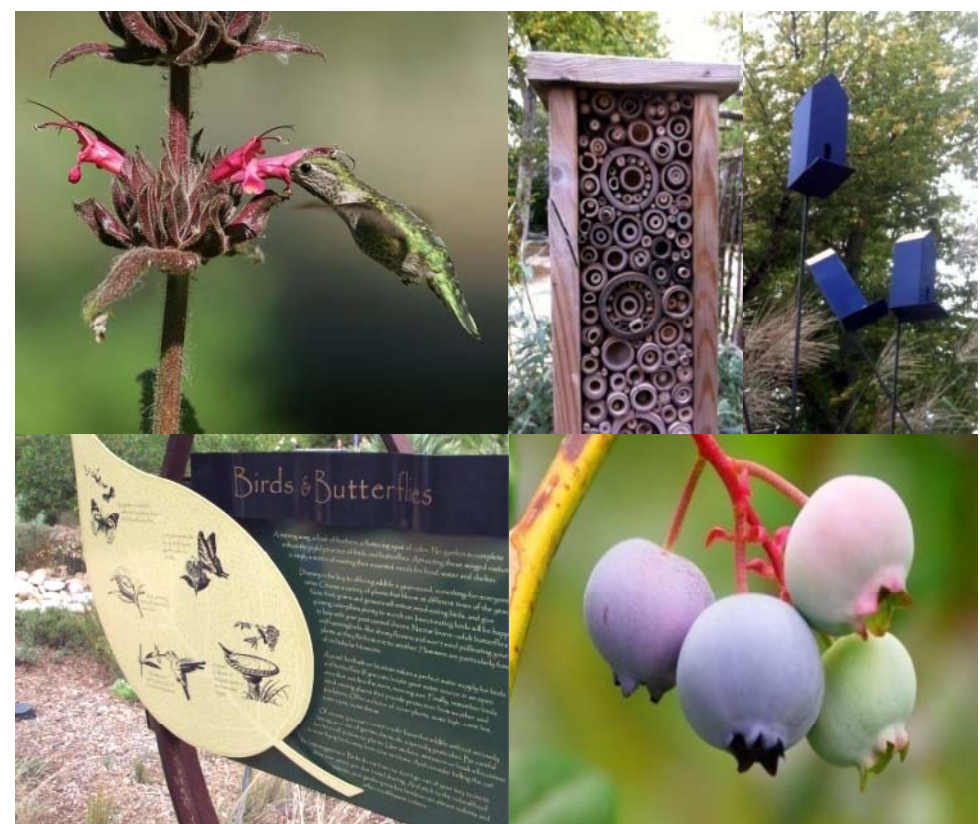
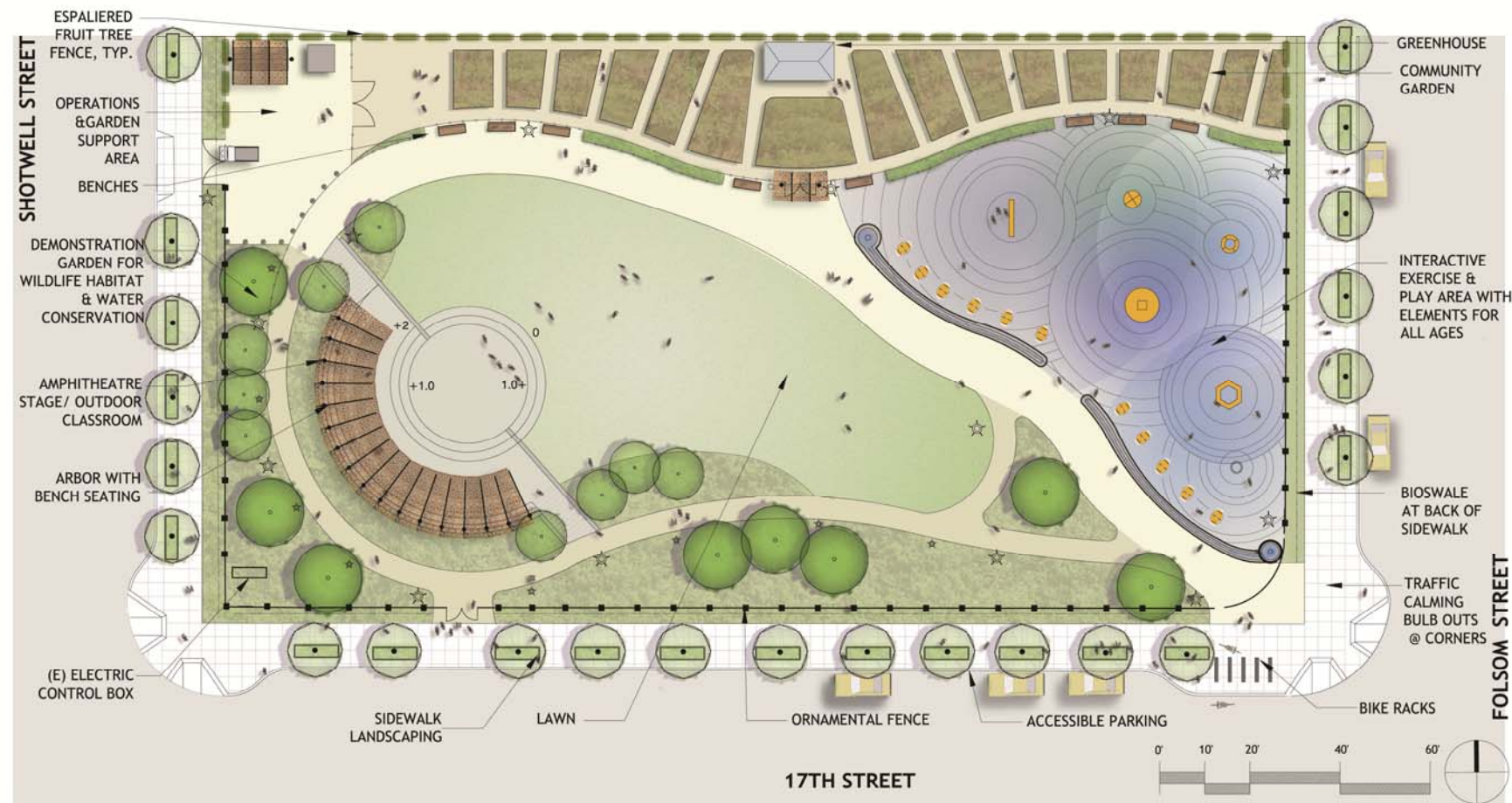
CONSULTANT:
DEPARTMENT OF PUBLIC WORKS
LANDSCAPE ARCHITECTURE SECTION



17th & Folsom Park

Activity Play Zone

CONSULTANT:
DEPARTMENT OF PUBLIC WORKS
LANDSCAPE ARCHITECTURE SECTION



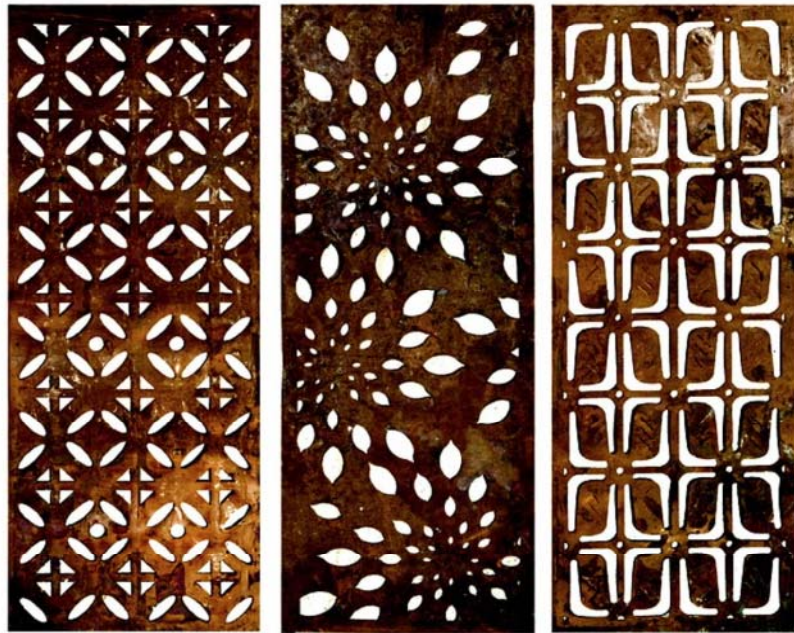
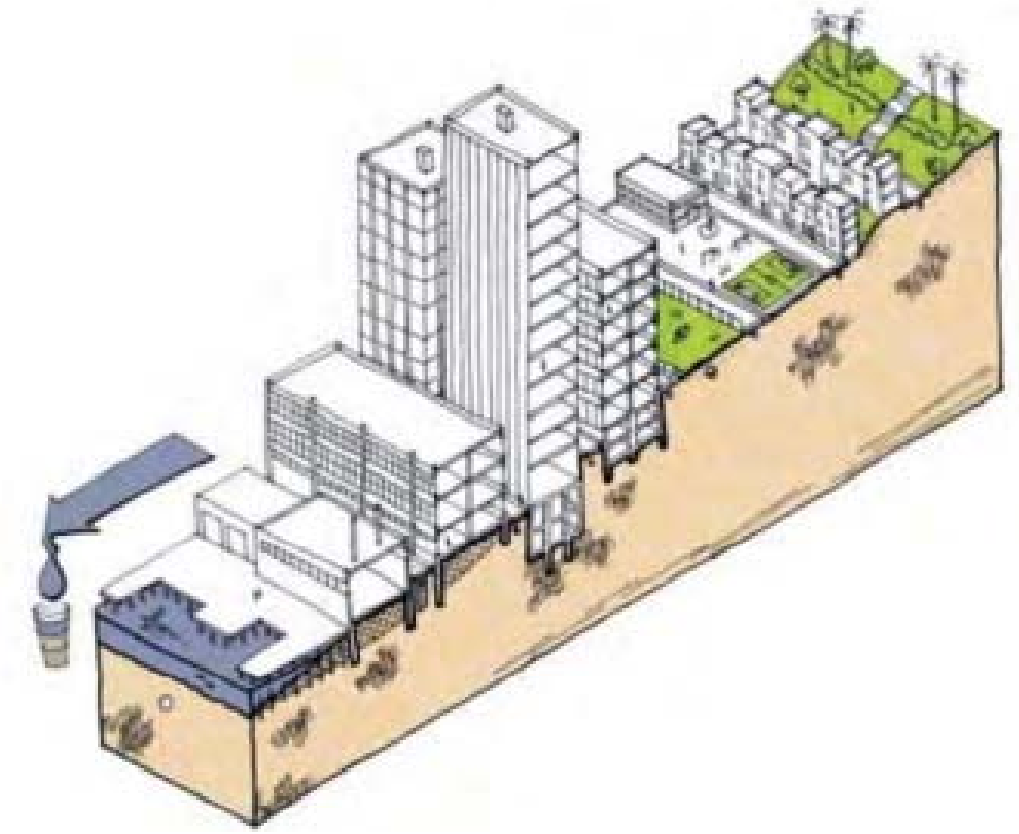
Demonstration Gardens



17th & Folsom Park

Gathering Area

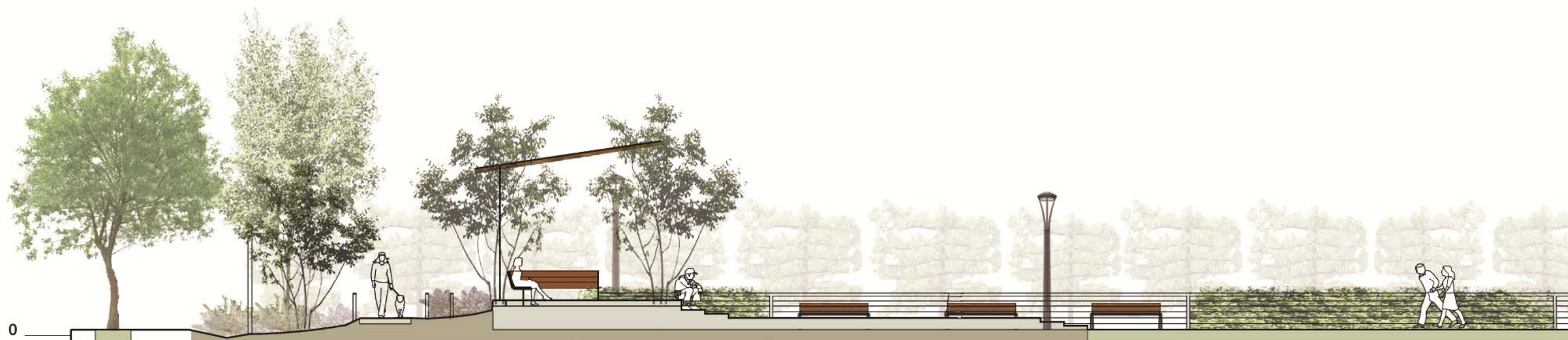
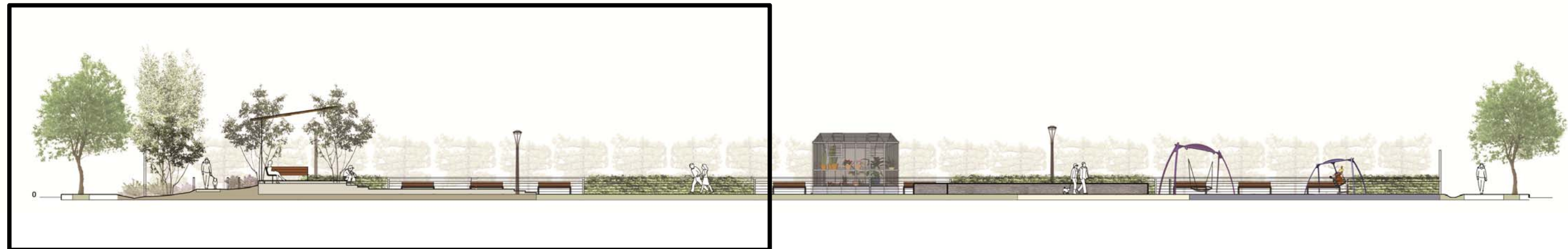
CONSULTANT:
DEPARTMENT OF PUBLIC WORKS
LANDSCAPE ARCHITECTURE SECTION



17th & Folsom Park

Perimeter

CONSULTANT:
DEPARTMENT OF PUBLIC WORKS
LANDSCAPE ARCHITECTURE SECTION



17th & Folsom Park

Section Facing North

CONSULTANT:
DEPARTMENT OF PUBLIC WORKS
LANDSCAPE ARCHITECTURE SECTION



17th & Folsom Park

Sections Facing North

CONSULTANT:
DEPARTMENT OF PUBLIC WORKS
LANDSCAPE ARCHITECTURE SECTION



17th & Folsom Park

Visualization

CONSULTANT:
DEPARTMENT OF PUBLIC WORKS
LANDSCAPE ARCHITECTURE SECTION



17th & Folsom Park

Visualization

CONSULTANT:
DEPARTMENT OF PUBLIC WORKS
LANDSCAPE ARCHITECTURE SECTION

Proposed Schedule

Spring 2012 / Planning
Finalize the Concept Plan

Spring 2012 –Spring 2013/ Design
Detailed design of the park site

Spring 2013/ Bid & Award
Contract the work to build the park

Spring 2013-Spring 2014
Site Remediation and Construction

Spring 2014
Park is Built!



17th & Folsom Park

Proposed Schedule
Update

CONSULTANT:
DEPARTMENT OF PUBLIC WORKS
LANDSCAPE ARCHITECTURE SECTION



Thank you!

- <http://17thfolsompark.sfplanning.org>
- Mary Hobson, Project Manager
mary.hobson@sfgov.org