

EARTHQUAKE SAFETY and
EMERGENCY RESPONSE (ESER) BOND 1
Neighborhood Fire Stations

Fire Station No. 16

August 19, 2013

Civic Design Review
Phase 2



FIRE STATION No. 16

- Historic Evaluation
- City Planning Status
- SFAC Public Art Program Status
- Phase 1 Approval - January 14, 2013
- Total Project Budget: \$10M
- Project Scope Changes - Roof Deck





1938
Built



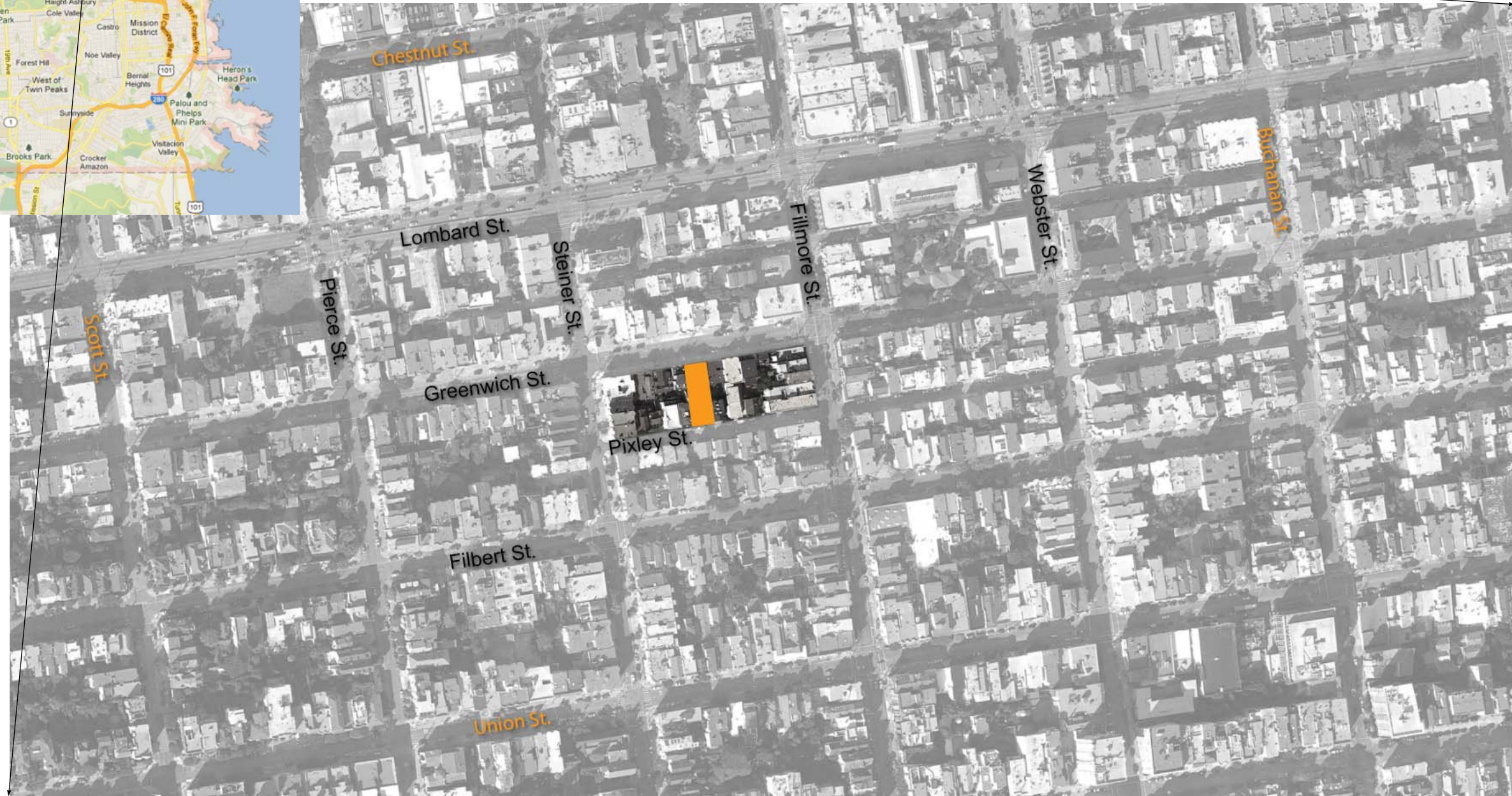
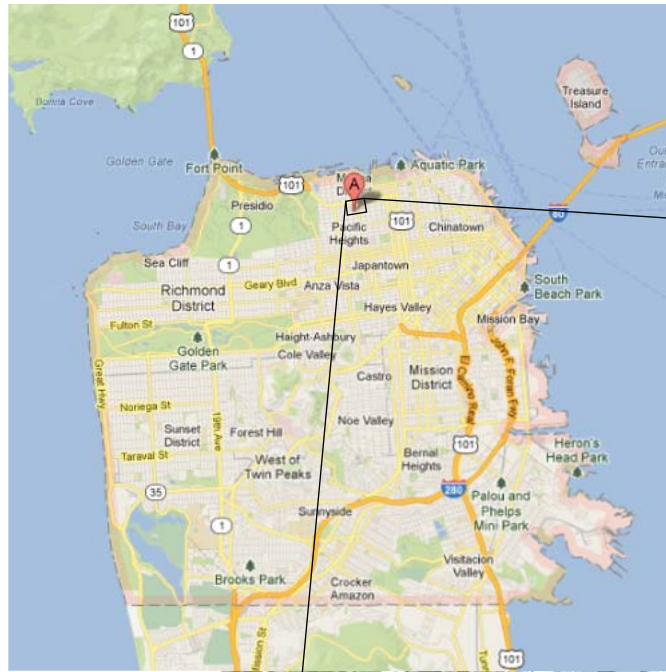
1956
Reconstruction

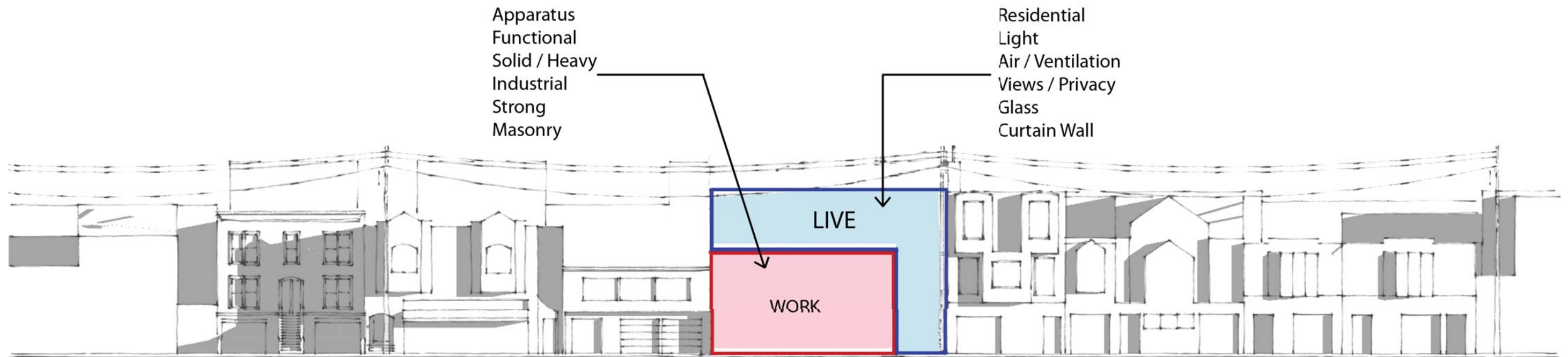
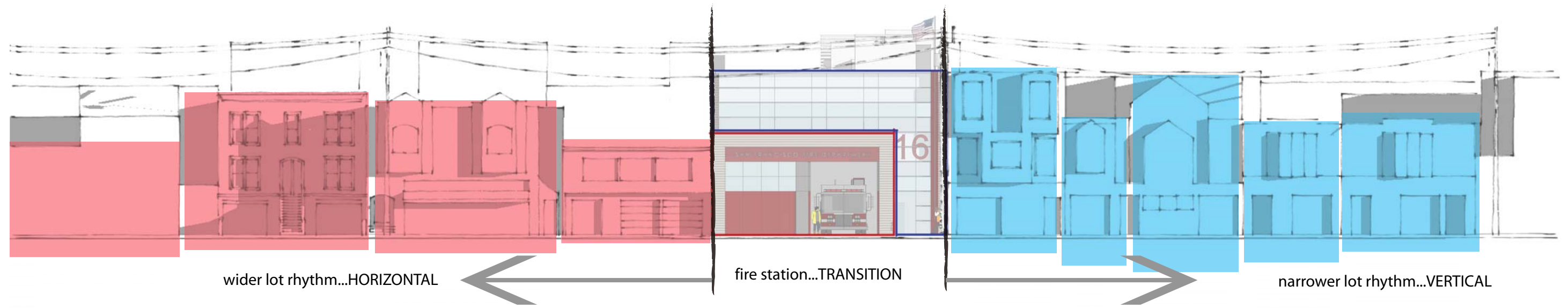
Interior renovations &
ADA upgrades
1993

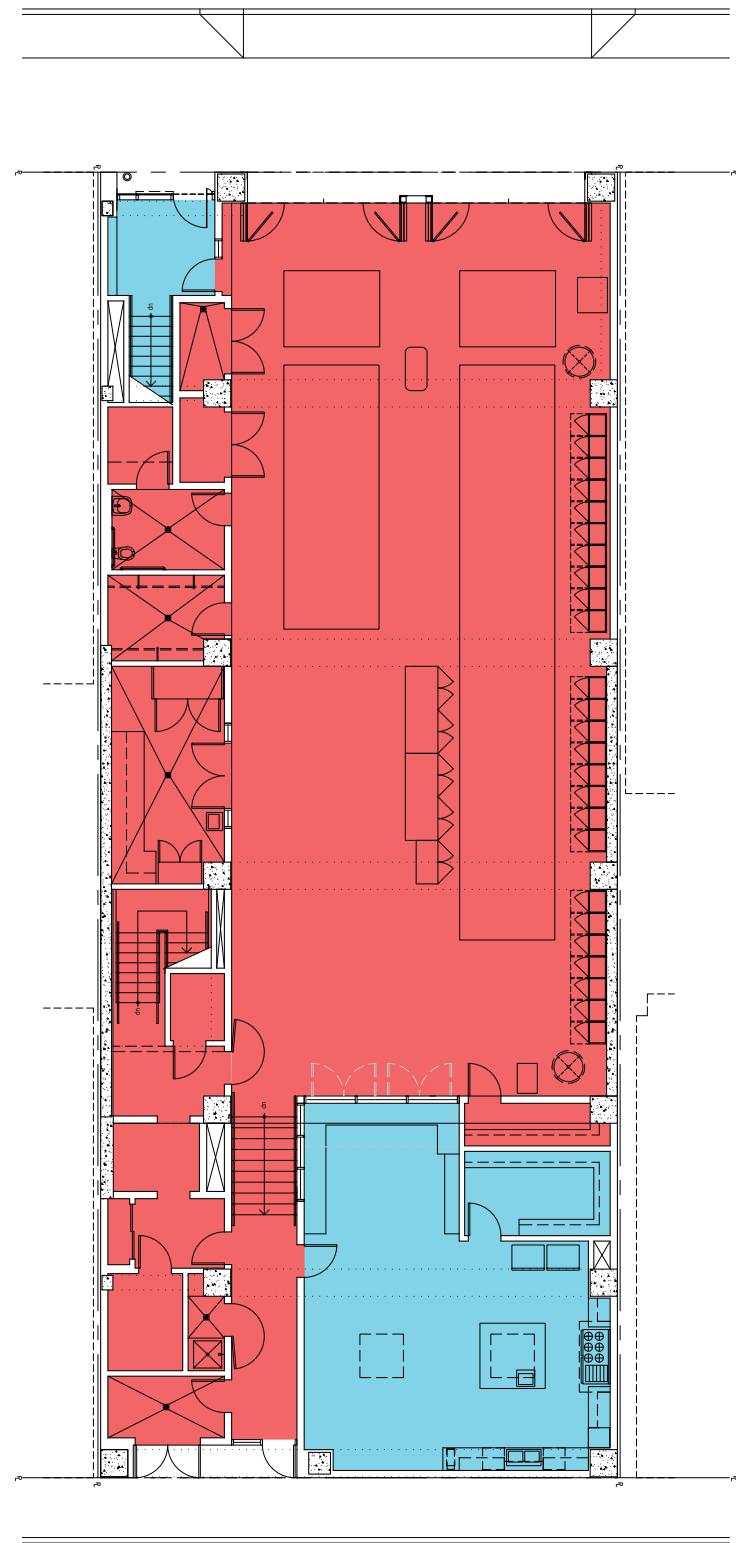


2013
Present





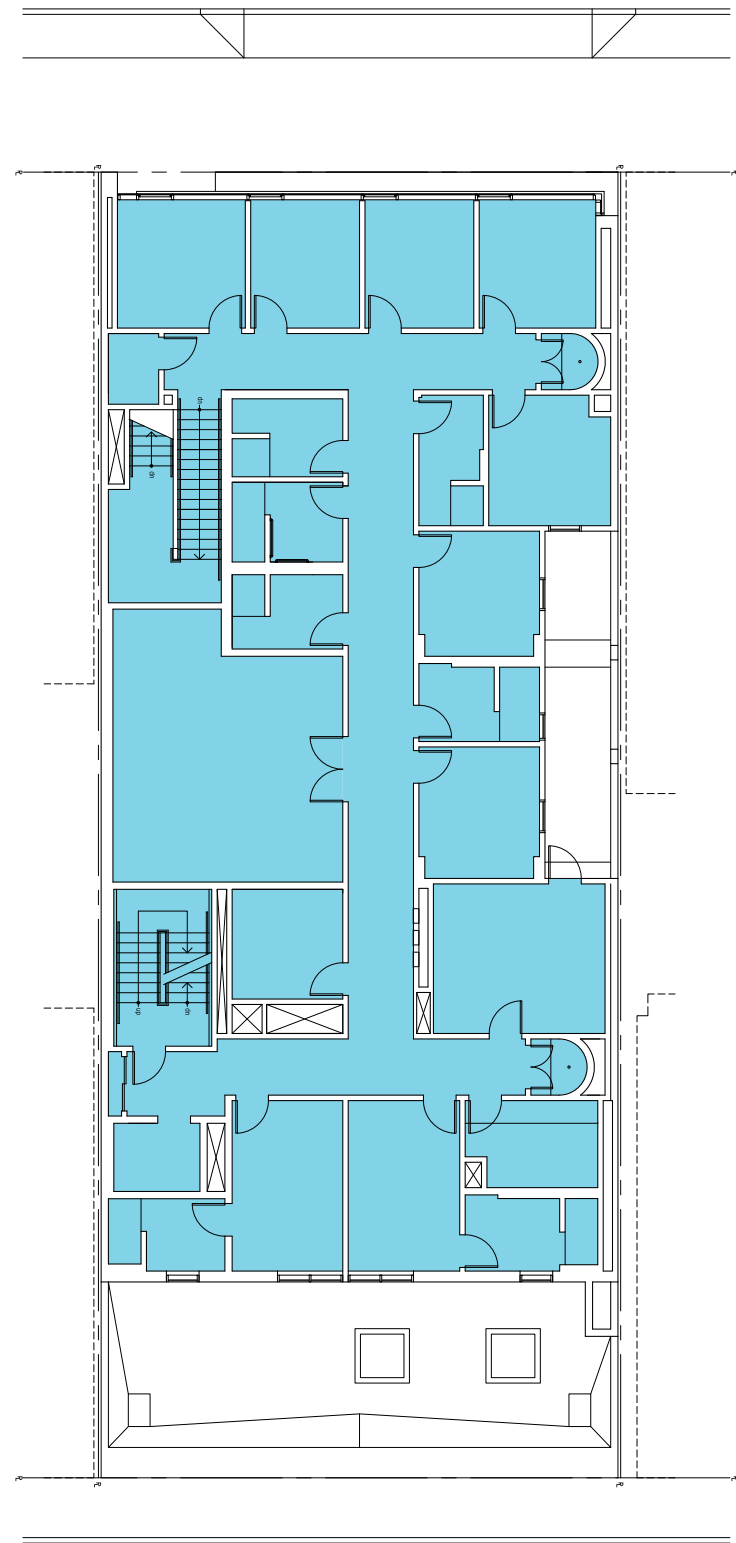




1st Floor Plan

Working Space █
 Living Space █





2nd Floor Plan

Working Space █
 Living Space █











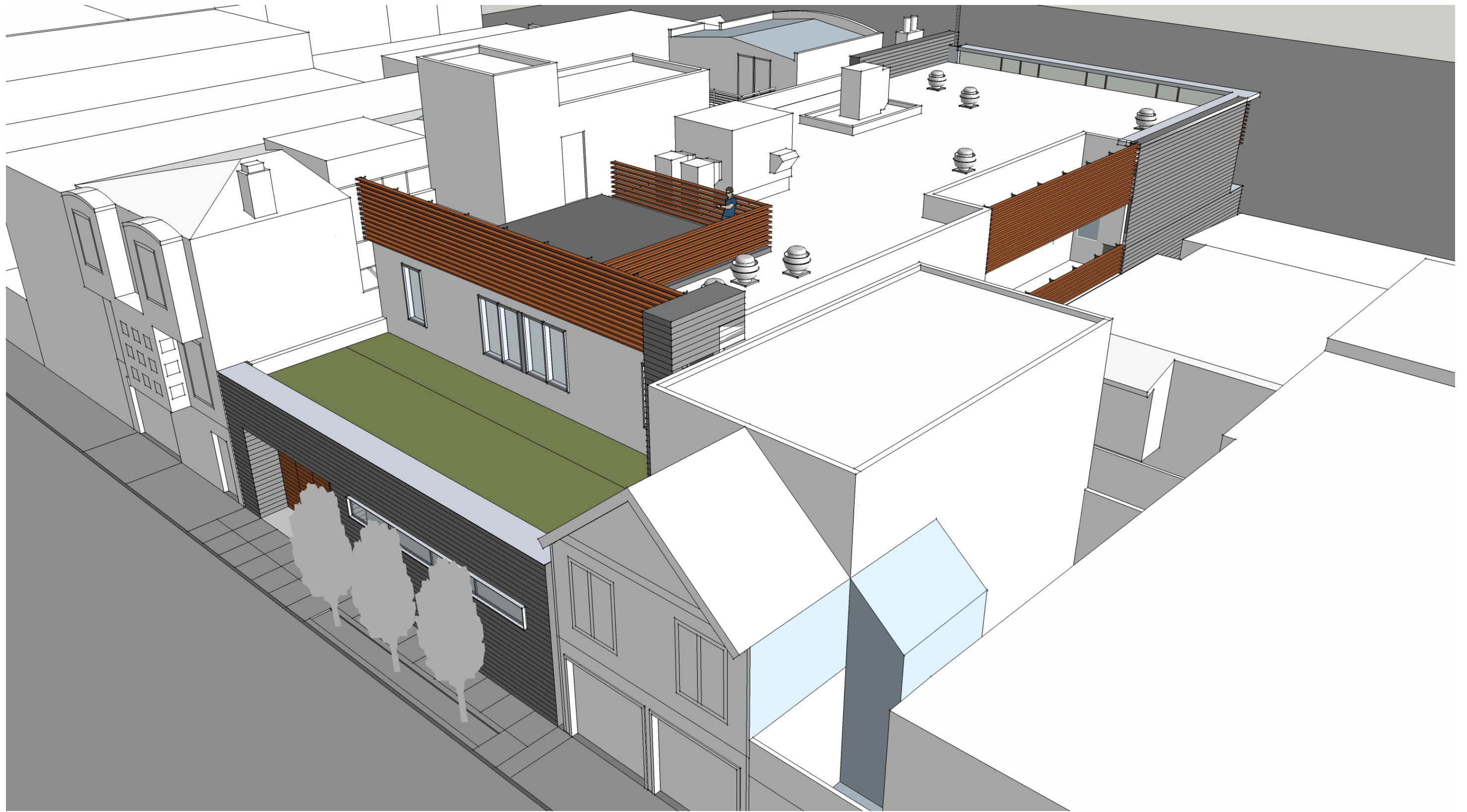


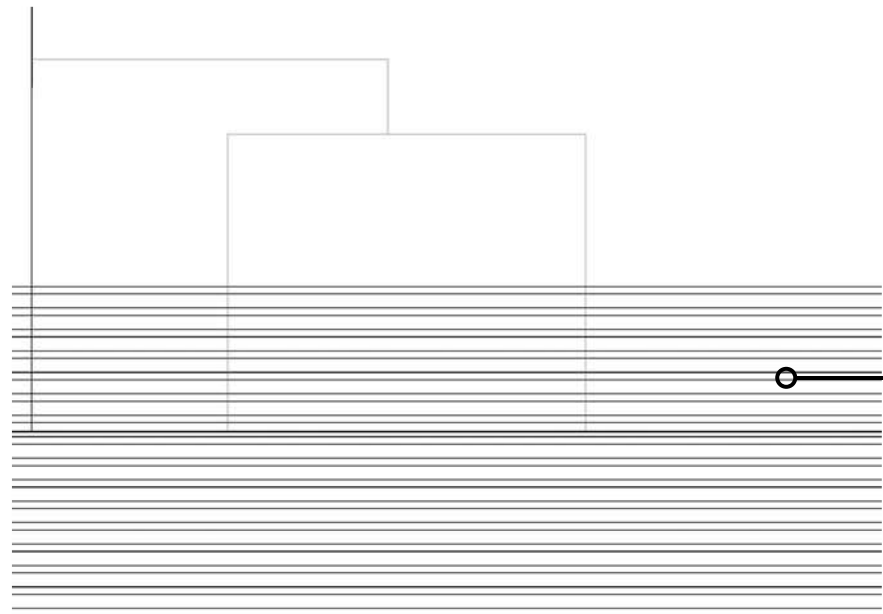
Greenwich Street



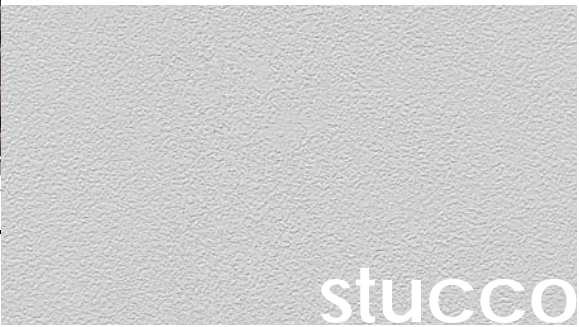
Pixley Street



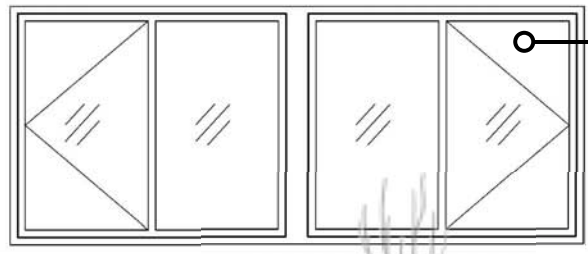
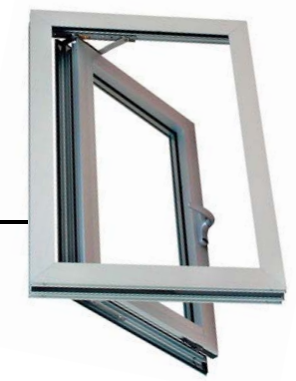




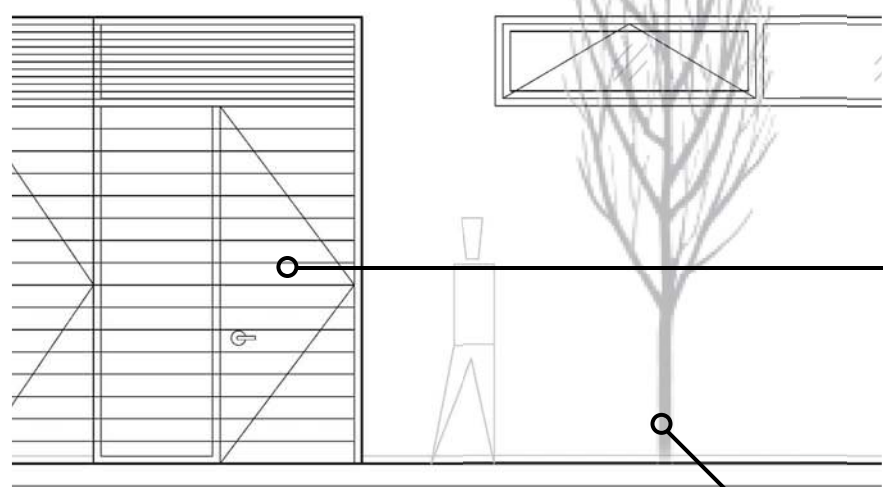
sunshades



stucco



basalt



slatted wall



pyrus calleryana "capital"



- QUESTIONS
- DISCUSSION

