

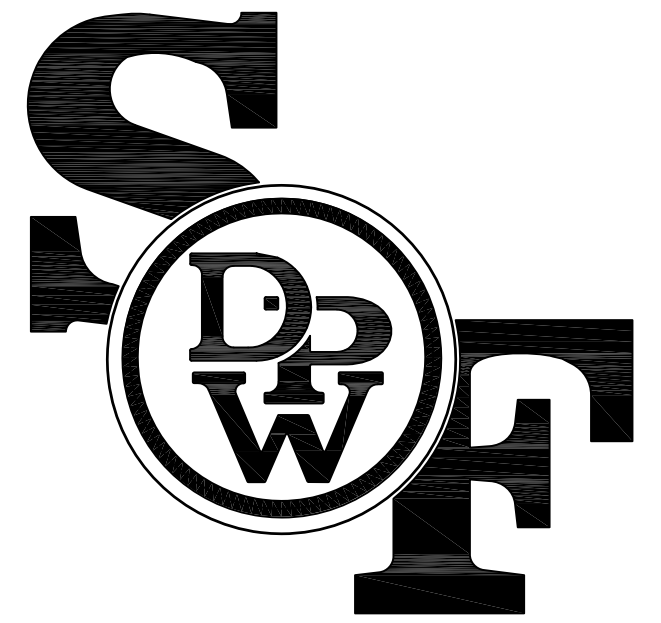
MISSION DOLORES PARK REHABILITATION PROJECT

A RECREATION AND PARK COMMISSION PROJECT

CONTRACT NO. 3073V

(ID NO. XXXXX)

AUGUST, 2013

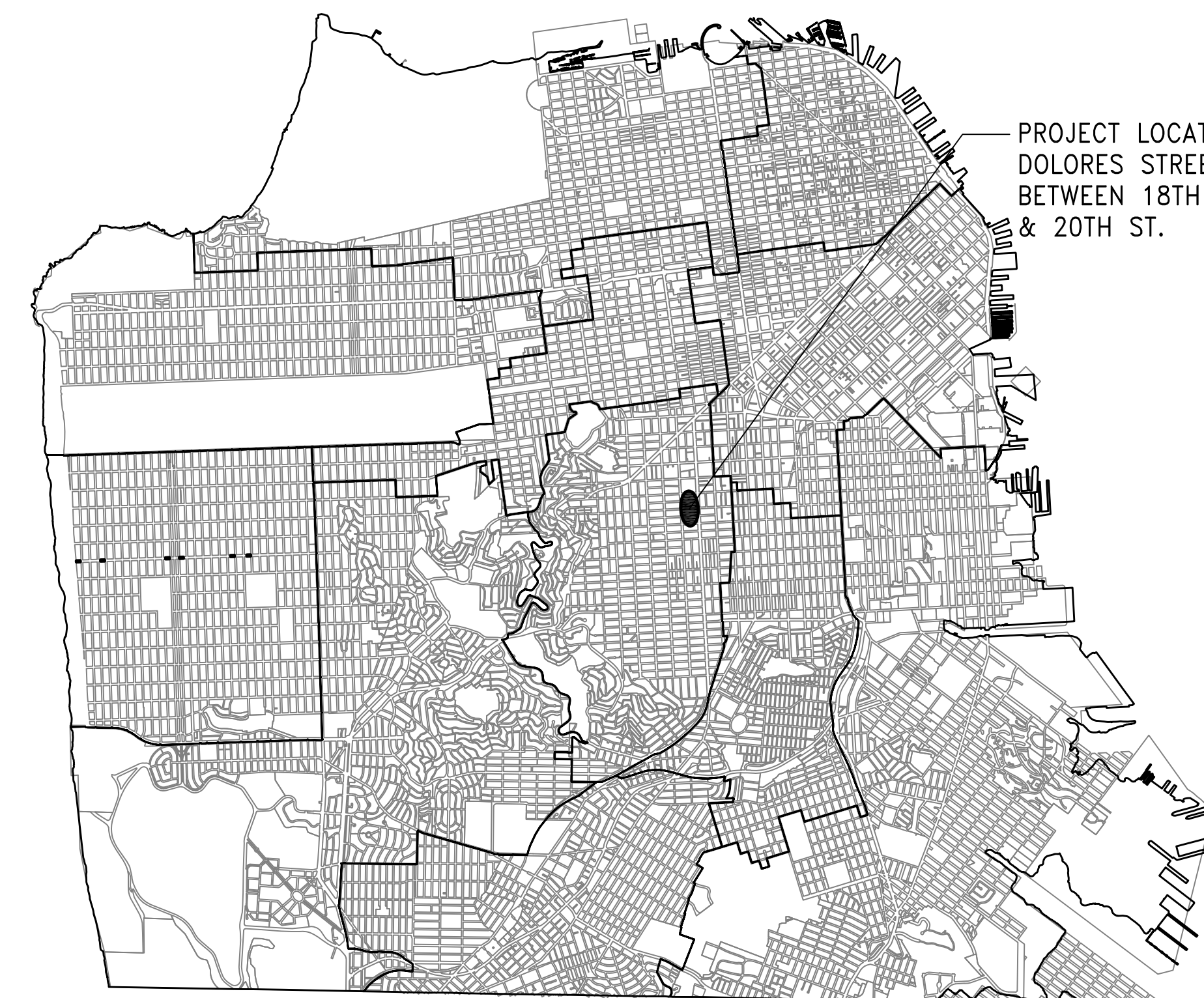


Department of Public Works
Building Design & Construction

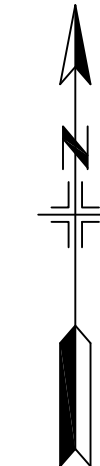
Edgar A. Lopez, AIA
City Architect & Deputy Director



DOLORES PARK VIEW OF DOWNTOWN SAN FRANCISCO



PROJECT LOCATION:
DOLORES STREET
BETWEEN 18TH ST.
& 20TH ST.



LOCATION MAP

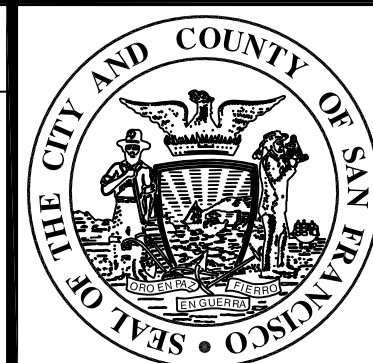
REQUIREMENTS TO BIDDERS

1. IN ACCORDANCE WITH THE PROVISIONS OF THE CALIFORNIA PUBLIC CONTRACT CODE SECTION 3300, A BID SUBMITTED TO A PUBLIC AGENCY BY A CONTRACTOR WHO IS NOT LICENSED IN ACCORDANCE WITH CHAPTER 9 OF THE BUSINESS AND PROFESSIONS CODE SHALL BE CONSIDERED NON-RESPONSIVE AND SHALL BE REJECTED BY THE PUBLIC AGENCY.
2. AT THE TIME OF BID OPENING, THE CONTRACTOR SHALL POSSESS A VALID CLASS "A" CALIFORNIA GENERAL ENGINEERING CONTRACTOR'S LICENSE OR CLASS "B" BUILDING CONTRACTOR'S LICENSE.

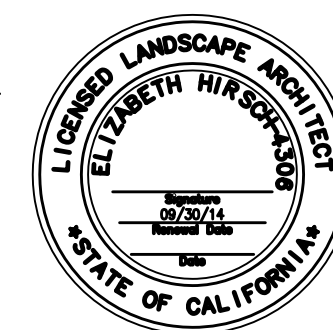
100% CD Submittal

| NO. | DATE | DESCRIPTION | BY | APP. |
|---|------|-------------|----|------|
| TABLE OF REVISIONS | | | | |
| THIS DRAWING WAS LAST MODIFIED: 08/02/13 10:21, BY: gmeil | | | | |

REFERENCE INFORMATION
& FILE NO. OF SURVEYS



Building Design & Construction
DEPARTMENT OF PUBLIC WORKS
CITY AND COUNTY OF SAN FRANCISCO



| | | |
|-----------|---------|-----------------------|
| DESIGNED: | DATE: | APPROVED |
| LH/GM | 08/2013 | |
| DRAWN: | DATE: | SECTION MANAGER |
| EB/GM | 08/2013 | |
| CHECKED: | DATE: | DEPUTY BUREAU MANAGER |
| | | |
| | | BUREAU MANAGER |
| | | |

| | |
|-----------------|-----|
| SCALE: | N/A |
| SHEET OF SHEETS | |
| OF | |

| |
|------------------------|
| MISSION DOLORES PARK |
| REHABILITATION PROJECT |
| TITLE SHEET |

| |
|------------------------|
| JOB ORDER NO. 3073V |
| DRAWING NO. G1 |
| FILE NO. |
| REV. NO. |

Xrefs: V:\3073V_Mission_Dolores_Park\2_Design\BOE7_TED.dwg
 Q:\CAOS_2000\Agency\BOE\Title Block\LocationMap.dwg
 Model Units: Inches
 Measurement Units are English
 Drawing Path: V:\3073V_Mission_Dolores_Park\2_Design\Working_Drawings\EIA\Sheets\3073V_G1_TITLE.dwg, Login: emh
 Plot Time: Tue, 06 Aug 2013 3:46pm

LANDSCAPE GENERAL NOTES

GENERAL NOTES

ALL WORK TO BE PERFORMED SHALL CONFORM TO ALL APPLICABLE CODES AND ORDINANCES OF GOVERNMENTAL AGENCIES HAVING JURISDICTION OVER THE PROJECT.

PROTECT ALL UTILITIES, IMPROVEMENTS AND STRUCTURES AND RESTORE TO NEW CONDITION AT NO ADDITIONAL COST TO THE CITY IF DAMAGED DURING THE COURSE OF WORK.

COORDINATE ALL WORK TO PREVENT CONFLICTS BETWEEN TRADES AND REPORT CONFLICTS OR INCONGRUITIES BETWEEN NEW IMPROVEMENTS AND/OR EXISTING FACILITIES TO THE CITY REPRESENTATIVE IMMEDIATELY.

THE CONTRACTOR IS RESPONSIBLE FOR THE COORDINATION AND INSTALLATION OF ALL PLUMBING AND ELECTRICAL ITEMS TO BE INSTALLED AS A PART OF THIS WORK.

CLEAR AND REMOVE ALL ORGANIC MATTER, DEBRIS AND RUBBISH FROM WITHIN THE LIMIT OF WORK. CONTRACTOR SHALL DISPOSE OF SAID MATERIAL IN A LEGAL MANNER AS HIS PROPERTY.

IN ADDITION TO THESE DRAWINGS, REFER TO CCSF STANDARD SPECIFICATIONS.

ABBREVIATIONS

| | | | |
|---------|--------------------------------|---------|----------------------------|
| ALT | ALTERNATE | (N) | NEW |
| ARCH. | ARCHITECTURAL | N: | NORTHING |
| BLDG | BUILDING | A.I.C. | NOT IN CONTRACT |
| BC | BOTTOM OF CURB | NO., # | NUMBER |
| BW | BOTTOM OF WALL | A.T.S. | NOT TO SCALE |
| CCSF | CITY & COUNTY OF SAN FRANCISCO | NKE | NO KNOWN EQUAL |
| CL | CENTER LINE | O.C. | ON CENTER |
| CB | CATCH BASIN | O.D. | OUTSIDE DIAMETER |
| CLR. | CLEAR | O&M | OPERATIONS & MAINTENANCE |
| CONC. | CONCRETE | P.A. | PLANTING AREA |
| CONT. | CONTINUOUS | R, RAD. | RADIUS |
| C.J. | CONTROL JOINT | SAD | SEE ARCHITECTURAL DRAWINGS |
| CR | CURB RAMP | SD | STORM DRAIN |
| DIA., Ø | DIAMETER | SIM. | SIMILAR |
| DWG | DRAWING | SHT | SHEET |
| (E) | EXISTING | SSD | SEE STRUCTURAL DRAWINGS |
| E: | EASTING | SSWD | SEE STORM WATER DRAWINGS |
| EA. | EACH | SED | SEE ELECTRICAL DRAWINGS |
| ELECT. | ELECTRICAL | S.J. | SCORE JOINT |
| E.J. | EXPANSION JOINT | SPECS. | SPECIFICATIONS |
| EQ | EQUAL | ST. | STREET |
| F.G. | FINISH GRADE | STA | STATION |
| FTG. | FOOTING | TC | TOP OF CURB |
| GALV. | GALVANIZED | TF | TOP OF FENCE |
| GRAD. | GRADING | TP | TOP OF PAVING |
| JT. | JOINT | TW | TOP OF WALL |
| L.O.W. | LIMIT OF WORK | TYP. | TYPICAL |
| MAX. | MAXIMUM | U.O.N. | UNLESS OTHERWISE NOTED |
| MIN. | MINIMUM | W/ | WITH |
| MH | MANHOLE | ⌒ | FLUSH OR ALIGNED |

RESTORATION OF LANDSCAPE AREAS

RESTORE ALL EXISTING PAVING, WALLS, FENCES, PLANTING DISTURBED BY UTILITY TRENCHING OR TREE REMOVAL TO PRECONSTRUCTION CONDITION AS DIRECTED BY THE CITY REPRESENTATIVE.

RESTORE ALL DISTURBED LANDSCAPE AREAS WITHIN THE LIMIT OF WORK AND ALL LANDSCAPE AREAS DISTURBED BY CONSTRUCTION ACTIVITIES, AS FOLLOWS: THE DISTURBED LANDSCAPE AREAS SHALL BE WEDED, CULTIVATED, FINE GRADED FLUSH TO ADJACENT FINISH GRADE WITH NO VOIDS, DEPRESSIONS OR MOUNDS, PLANTED AND MAINTAINED THROUGHOUT THE CONSTRUCTION PERIOD. RESTORATION OF EXISTING LAWN AREAS SHALL FOLLOW THE SPECIFICATIONS 32-90-00.

THE CITY REP. IN COORDINATION WITH RECREATION & PARK STAFF SHALL INSPECT THE PREPARATION OF DISTURBED LANDSCAPE AREAS PER THESE NOTES AND THE CONTRACTOR SHALL MAKE ADJUSTMENTS AS DIRECTED BY THE CITY REPRESENTATIVE.

DEMOLITION NOTES

PROTECT ALL SITE ELEMENTS TO REMAIN.

PROVIDE CONSTRUCTION FENCING PER SPEC AT LIMIT OF WORK LINE & PHASING PLANS THROUGHOUT CONSTRUCTION PERIOD.

ALL MATERIALS SHALL BE DISPOSED OF IN A LEGAL MANNER AS CONTRACTOR'S PROPERTY.

LAYOUT NOTES

VERIFY ALL DIMENSIONS IN THE FIELD PRIOR TO BEGINNING CONSTRUCTION AND REPORT ANY DISCREPANCIES TO THE CITY REPRESENTATIVE PRIOR TO PROCEEDING.

WRITTEN DIMENSIONS ON DRAWINGS SUPERSEDE SCALE DIMENSIONS.

ALL DIMENSIONS ARE TO BE MEASURED HORIZONTALLY.

VERIFY LOCATION AND ELEVATIONS OF UTILITY VAULTS AND OTHER COVERS AND REPORT ANY CONFLICTS OR DISCREPANCIES TO THE CITY REPRESENTATIVE.

PLACE EXPANSION JOINTS WHERE ALL HORIZONTAL PAVING ABUTS A VERTICAL SURFACE AND AS SHOWN ON PLANS. JOINTS SHALL BE 3/8" PRE-MOLDED ASPHALTIC FIBER MATERIAL, SEE SPECS.

THE CONTRACTOR SHALL STAKE ALL PAVED AREAS AND FOOTINGS FOR REVIEW BY THE CITY REPRESENTATIVE BEFORE FINAL CONSTRUCTION.

GRADING NOTES

VERIFY ALL GRADES IN THE FIELD BEFORE PROCEEDING WITH WORK, INCLUDING EXISTING IMPROVEMENTS; LOCATIONS AND ELEVATIONS OF AREA DRAINS.

EXISTING GRADES SHOWN ARE APPROXIMATE AND SHALL BE FIELD VERIFIED. ALL DISCREPANCIES SHALL BE REPORTED TO THE CITY REPRESENTATIVE IMMEDIATELY.

THE CONTRACTOR SHALL BE RESPONSIBLE FOR POSITIVE SURFACE DRAINAGE IN ALL PAVING AND PLANTING AREAS. ALL GROUND SURFACES SHALL BE FINISHED TO A SMOOTH AND CONTINUOUS GRADE, DRAINING AND FREE OF STANDING WATER.

PROVIDE A SMOOTH TRANSITION BETWEEN EXISTING AND NEW GRADES IN PLANTING AREAS. WHERE NEW PAVEMENT ABUTS NEW PAVEMENT, FINISH GRADES SHALL BE FLUSH, UNLESS OTHERWISE NOTED. EASE TOP AND TOE OF ALL SLOPES TO PROVIDE SMOOTH TRANSITIONS BETWEEN GROUND PLANES.

THE CITY REPRESENTATIVE RESERVES THE RIGHT TO MAKE ADJUSTMENTS IN THE FINISHED GRADES AS THE WORK PROGRESSES.

ELEVATIONS ARE BASED ON CITY AND COUNTY OF SAN FRANCISCO DATUM, UNLESS OTHERWISE NOTED.

PLANTING NOTES

SEE STANDARD SPECIFICATIONS, SECTION 1007 "PLANTING", FOR ADDITIONAL PLANTING INFORMATION.

PLANTS QUANTITIES PROVIDED ARE FOR THE CONVENIENCE OF THE CONTRACTOR. IN CASE OF DISCREPANCIES, THE PLAN SHALL GOVERN.

THE CITY REPRESENTATIVE IS TO INSPECT AND TAG ALL TREES, INCLUDING PALM TREES, AT NURSERY GROWING GROUNDS PRIOR TO DELIVERY. CONTRACTOR SHALL REVIEW ALL PLANT MATERIAL ON SITE WITH THE CITY REPRESENTATIVE AND SHALL INSTALL MATERIAL ONLY AFTER OBTAINING APPROVAL OF ACCEPTANCE FROM THE CITY REPRESENTATIVE.

PLANTING NOTES (CONTINUED)

THE CITY REPRESENTATIVE RESERVES THE RIGHT TO MAKE SUBSTITUTIONS, ADDITIONS, AND DELETIONS IN THE PLANTING SCHEME AS THE WORK PROGRESSES.

CONTRACTOR SHALL REVIEW PLANT MATERIAL LOCATION PRIOR TO FINAL PLANTING WITH THE CITY REPRESENTATIVE. LOCATIONS SHOWN ON PLANS ARE DIAGRAMMATIC ONLY.

UNLESS OTHERWISE NOTED, ALL GROUND COVER AND SHRUBS SHALL BE SPACED TRIANGULARLY.

ALL NEWLY PLANTED GROUND COVER AND SHRUB AREAS TO RECEIVE 3" MIN. MULCH. SEE SPECIFICATIONS.

ALL GROUND COVER AND SHRUB AREAS LESS THAN 2:1 SLOPE TO RECEIVE WEED FABRIC. SEE SPECIFICATIONS.

TREES IDENTIFIED FOR TRANSPLANT PER PLAN PRIOR TO SITE DEMOLITION, SHALL BE TRANSPLANTED IMMEDIATELY TO FUTURE LOCATIONS OR TEMPORARILY POTTED AND WATERED UNTIL PLANTING CAN OCCUR.

IRRIGATION NOTES

- THESE NOTES AND IRRIGATION PLAN GOVERN IRRIGATION INSTALLATION ONLY AND ARE NOT INTENDED TO GOVERN OTHER WORK.
- VERIFY LOCATIONS OF POINT OF CONNECTION AND MAIN LINES & PROPOSED CONTROLLER PRIOR TO COMMENCEMENT OF WORK. ANY DISCREPANCY BETWEEN THE DRAWINGS AND FIELD CONDITIONS WHICH AFFECTS IRRIGATION LAYOUT SHALL BE BROUGHT TO THE ATTENTION OF THE CITY REPRESENTATIVE PRIOR TO THE INSTALLATION OF ANY PIPE. THE CONTRACTOR IS RESPONSIBLE FOR THE INSTALLATION OF AN IRRIGATION SYSTEM THAT PROVIDES 100% COMPLETE AND APPROPRIATE COVERAGE IN ALL PLANTING AREAS. THE WORK OF THE CONTRACT INCLUDES ADJUSTMENTS TO THE SYSTEMS INDICATED, INCLUDING QUANTITIES OF PIPING, HEADS, NOZZLES & OTHER EQUIPMENT, AS NECESSARY TO ASSURE COMPLETE COVERAGE.
- THE IRRIGATION DRAWINGS ARE DIAGRAMMATIC AND DO NOT SHOW EXACT LOCATIONS OF PIPING, VALVES OR CONTROL LINES & WITHIN PLANTING AREAS. INSTALL THESE ITEMS PARALLEL TO AND AS CLOSELY AS POSSIBLE TO CURBS, HEADERS OR PAVING EDGES UNLESS OTHERWISE INDICATED. FIELD VERIFY EXACT LOCATIONS OF VALVE BOXES, GATE VALVES AND QUICK COUPLERS WITH THE CITY REPRESENTATIVE BEFORE INSTALLATION.
- IRRIGATION HEAD LOCATIONS ARE INDICATED AS ACCURATELY AS POSSIBLE ON THE DRAWINGS. INSTALL HEADS AS INDICATED BY THE CENTERLINE OF THE SYMBOL AND IN ACCORDANCE WITH INSTALLATION DETAILS.
- INSTALL ALL PIPING AND CONTROL WIRING UNDER PAVING IN SCH 40 PVC SLEEVES OF SUFFICIENT SIZE TO ALLOW FOR EASY INSERTION AND REMOVAL.
- INSTALL EACH SOLENOID VALVE IN A SEPARATE VALVE BOX PER DETAIL. SEE SPECS.
- POP-UP SPRINKLER HEIGHT: INSTALL 12" IN GROUND COVER/ SHRUB AREAS INCLUDING NO-MOW GRASS AREAS. USE 6" POP-POP UP SPRINKLER (ROTOR) HEIGHT IN LAWN AREAS.
- COORDINATE WORK WITH ALL APPROPRIATE TRADES FOR THE INSTALLATION OF PIPING, PIPE SLEEVES AND ELECTRICAL CONDUIT.
- THE IRRIGATION SYSTEM HAS BEEN DESIGNED FOR 30-40 PSI AND A MAXIMUM GPM OF 50. THE CONTRACTOR IS RESPONSIBLE FOR VERIFICATION OF APPROPRIATE PRESSURE. NOTIFY THE CITY REPRESENTATIVE IMMEDIATELY, IF THERE ARE DISCREPANCIES.
- EXISTING BACKFLOW PREVENTERS SHALL BE CERTIFIED.
- QUICK COUPLERS SHALL BE ON A SEPARATE 2" MAIN LINE FROM THE CONTROL VALVES.

SALVAGE ITEMS

- FOR ITEMS IDENTIFIED TO BE SALVAGED UNLESS OTHERWISE NOTED DELIVER TO 100 MARTIN LUTHER KING RD, CONTACT 415-242-6371.

City and County of San Francisco



Edwin M. Lee, Mayor
Mohammed Nuru, Director

VOICE (415) 557-4685
FAX (415) 558-4519
TDD (415) 558-4088

Disability Access Coordinator
Department of Public Works
30 Van Ness Avenue, 5th Floor
San Francisco, CA 94102-6020

TO: **Jacob Gilchrist**, Project Manager

FROM: **Kevin W. Jensen, Disability Access Coordinator**

SUBJECT: **DISABILITY ACCESS QUALITY ASSURANCE REVIEW**

PROJECT: **Mission Dolores Park**

CLIENT DEPARTMENT: **RECREATION & PARK DEPARTMENT**

DATE: **XXXXX.XX**, 2013

THIS MEMO IS TO CONFIRM THAT I HAVE REVIEWED THE CONSTRUCTION DOCUMENTS AND THE APPLICABLE FEDERAL AND STATE REQUIREMENTS FOR PHYSICAL AND PROGRAMMATIC ACCESSIBILITY FOR THE ABOVE NOTED PROJECT.

Sincerely,

Kevin W. Jensen
DPW Disability Access Coordinator

"IMPROVING THE QUALITY OF LIFE IN SAN FRANCISCO" We are dedicated individuals committed to teamwork, customer service and continuous improvements in partnership with the community.
Customer service Teamwork Continuous Improvement

Updated 1/03



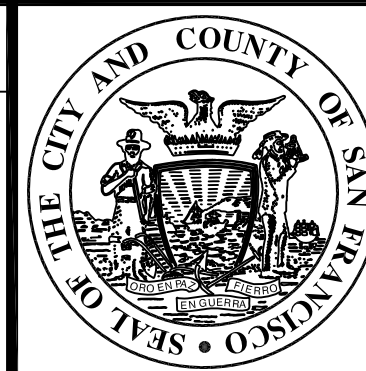
SITE PLAN

NOT TO SCALE

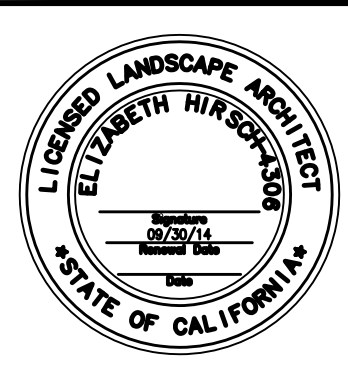


| NO. | DATE | DESCRIPTION | BY | APP. |
|--|------|-------------|----|------|
| TABLE OF REVISIONS | | | | |
| THIS DRAWING WAS LAST MODIFIED: 08/08/13 15:10, BY: ebliss | | | | |

REFERENCE INFORMATION
& FILE NO. OF SURVEYS



Building Design & Construction
DEPARTMENT OF PUBLIC WORKS
CITY AND COUNTY OF SAN FRANCISCO



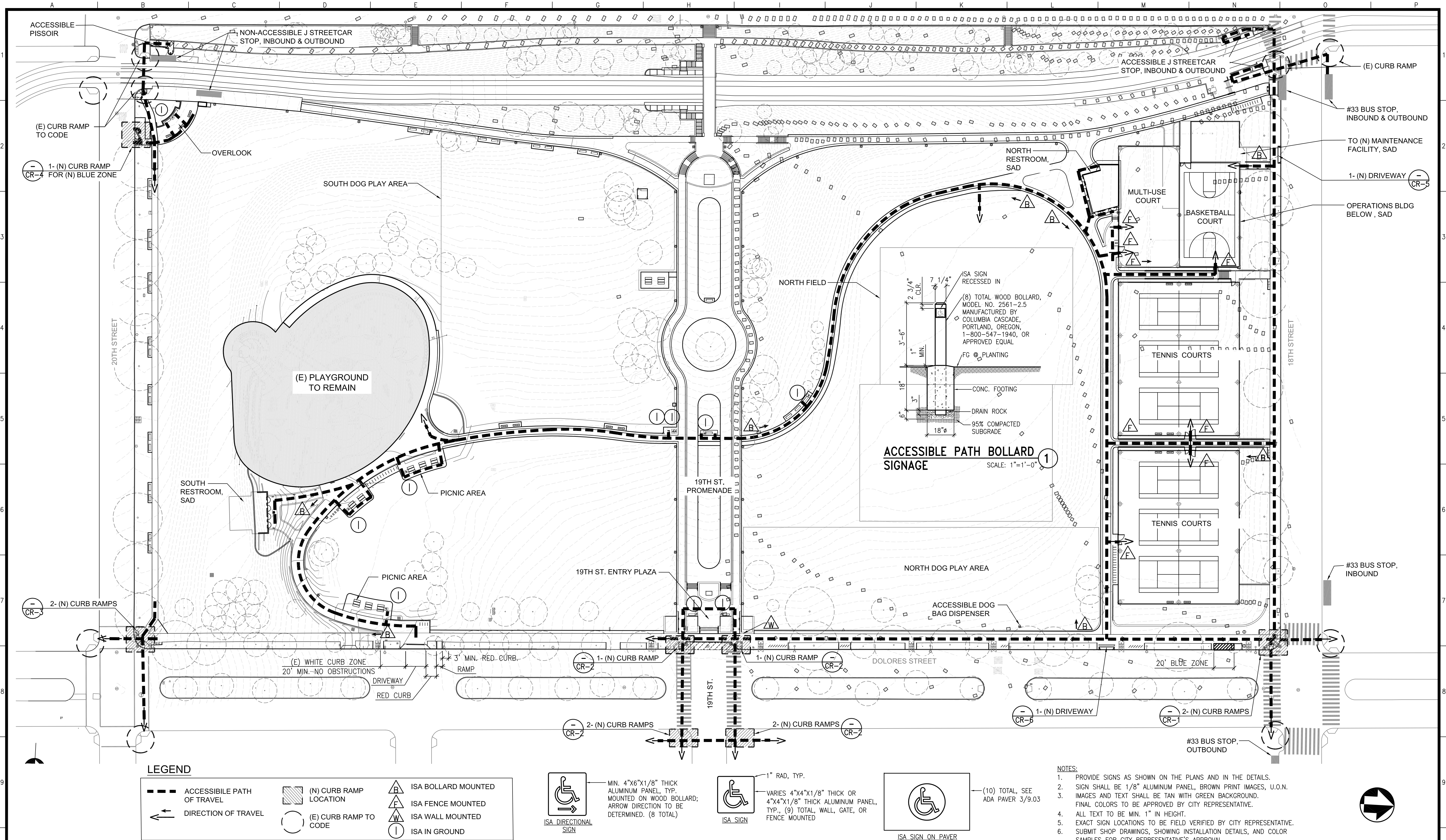
| | | | |
|-----------|---------|-----------------------|-------|
| DESIGNED: | DATE: | APPROVED | |
| LH/GM | 08/2013 | | |
| DRAWN: | DATE: | SECTION MANAGER | DATE: |
| EB/GM | 08/2013 | DEPUTY BUREAU MANAGER | DATE: |
| CHECKED: | DATE: | BUREAU MANAGER | DATE: |

| | |
|-----------------|-----|
| SCALE: | N/A |
| SHEET OF SHEETS | OF |

| | |
|---------------|-------|
| JOB ORDER NO. | 3073V |
| DRAWING NO. | G3 |
| FILE NO. | |
| REV. NO. | |

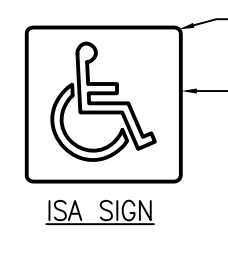
| | |
|---|--|
| MISSION DOLORES PARK | |
| REHABILITATION PROJECT | |
| LANDSCAPE GENERAL NOTES & ABBREVIATIONS | |

Xrefs: V:\3073V\Mission_Dolores_Park\2_Design\BOE\TBD.dwg
Model Units: Inches
Drawing Path: V:\3073V\Mission_Dolores_Park\2_Design\Working_Drawings\EIA\Sheets\3073V_C2-3_INDEX & NOTES.dwg
Plot Time: Thu, 06 Aug 2013 3:11pm



LEGEND

| | | | | | |
|--|---------------------------|--|------------------------|--|---------------------|
| | ACCESSIBLE PATH OF TRAVEL | | (N) CURB RAMP LOCATION | | ISA BOLLARD MOUNTED |
| | DIRECTION OF TRAVEL | | (E) CURB RAMP TO CODE | | ISA FENCE MOUNTED |
| | | | | | ISA WALL MOUNTED |
| | | | | | ISA IN GROUND |



- NOTES:**
- PROVIDE SIGNS AS SHOWN ON THE PLANS AND IN THE DETAILS.
 - SIGN SHALL BE 1/8" ALUMINUM PANEL, BROWN PRINT IMAGES, U.O.N. IMAGES AND TEXT SHALL BE TAN WITH GREEN BACKGROUND. FINAL COLORS TO BE APPROVED BY CITY REPRESENTATIVE.
 - ALL TEXT TO BE MIN. 1" IN HEIGHT.
 - EXACT SIGN LOCATIONS TO BE FIELD VERIFIED BY CITY REPRESENTATIVE.
 - SUBMIT SHOP DRAWINGS, SHOWING INSTALLATION DETAILS, AND COLOR SAMPLES FOR CITY REPRESENTATIVE'S APPROVAL.

| NO. | DATE | DESCRIPTION | BY | APP. |
|--|------|-------------|----|------|
| TABLE OF REVISIONS | | | | |
| THIS DRAWING WAS LAST MODIFIED: 08/08/13 15:19, BY: ebliss | | | | |

REFERENCE INFORMATION & FILE NO. OF SURVEYS



Building Design & Construction
DEPARTMENT OF PUBLIC WORKS
CITY AND COUNTY OF SAN FRANCISCO

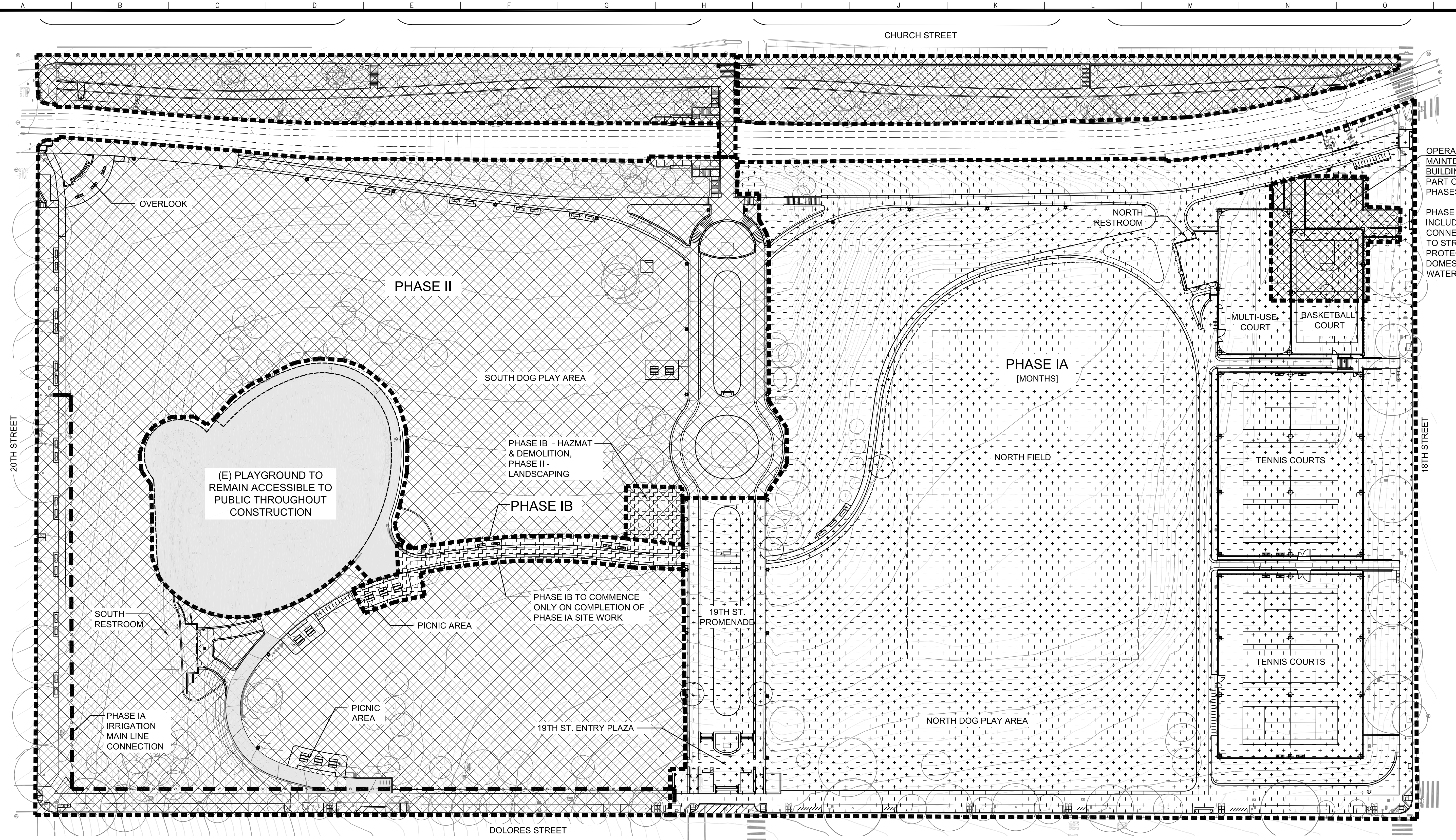


| | | |
|-----------|---------|-----------------------|
| DESIGNED: | DATE: | APPROVED |
| LH/GM | 08/2013 | |
| DRAWN: | DATE: | SECTION MANAGER |
| EB/GM | 08/2013 | |
| CHECKED: | DATE: | DEPUTY BUREAU MANAGER |
| | | |
| | | BUREAU MANAGER |
| | | |

| | |
|-----------------|-----|
| SCALE: | N/A |
| SHEET OF SHEETS | OF |

| | |
|------------------------|---------------------|
| MISSION DOLORES PARK | JOB ORDER NO. 3073V |
| REHABILITATION PROJECT | DRAWING NO. G7 |
| ACCESSIBILITY PLAN | FILE NO. |
| | REV. NO. |

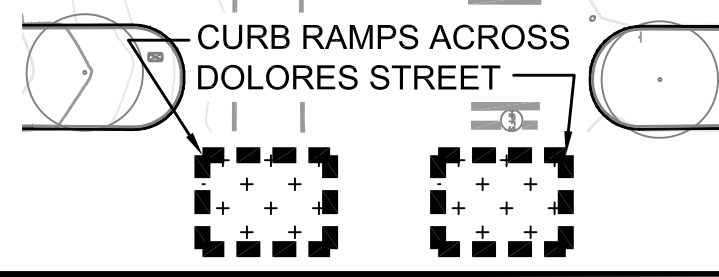
Xrefs: V:\3073V_Mission_Dolores_Park\2_Design\BOE7_TBD.dwg
 V:\3073V_Mission_Dolores_Park\2_Design\Working_Drawings\EIA_Base_Plans\3073V_L_BASE.dwg
 V:\3073V_Mission_Dolores_Park\2_Design\Working_Drawings\EIA_Base_Plans\3008_30B_Mission
 V:\3073V_Mission_Dolores_Park\2_Design\Working_Drawings\EIA_Base_Plans\3073V_Planes\3073V.dwg
 Plot Time: Thu, 06 Aug 2013 11:31:19pm
 Measurement Units are English



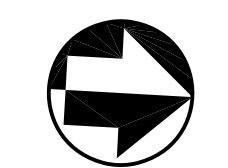
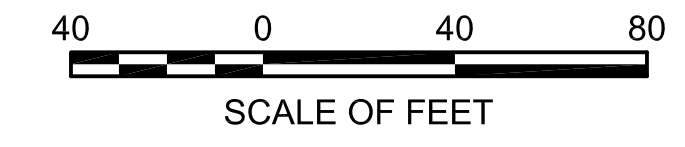
OPERATIONS & MAINTENANCE BUILDING BELOW PART OF BOTH PHASES.

PHASE IA MUST INCLUDE ALL CONNECTIONS TO STREET, FIRE PROTECTION, DOMESTIC WATER & SEWER

| LEGEND | |
|--------|-----------------------|
| | LIMIT OF WORK PHASE |
| | IRRIGATION CONNECTION |
| | PHASE IA WORK |
| | PHASE IB WORK |
| | PHASE II WORK |



NOTES:
 1. CONTRACTOR TO ALLOW FOR 50 DAY LAWN ESTABLISHMENT REQUIREMENT AS PART OF PHASE I COMPLETION AND SUBSTANTIAL COMPLETION SIGN OFF.



| NO. | DATE | DESCRIPTION | BY | APP. |
|---|------|-------------|----|------|
| TABLE OF REVISIONS | | | | |
| THIS DRAWING WAS LAST MODIFIED: 08/02/13 11:08, BY: gmeil | | | | |

REFERENCE INFORMATION & FILE NO. OF SURVEYS



Building Design & Construction
 DEPARTMENT OF PUBLIC WORKS
 CITY AND COUNTY OF SAN FRANCISCO

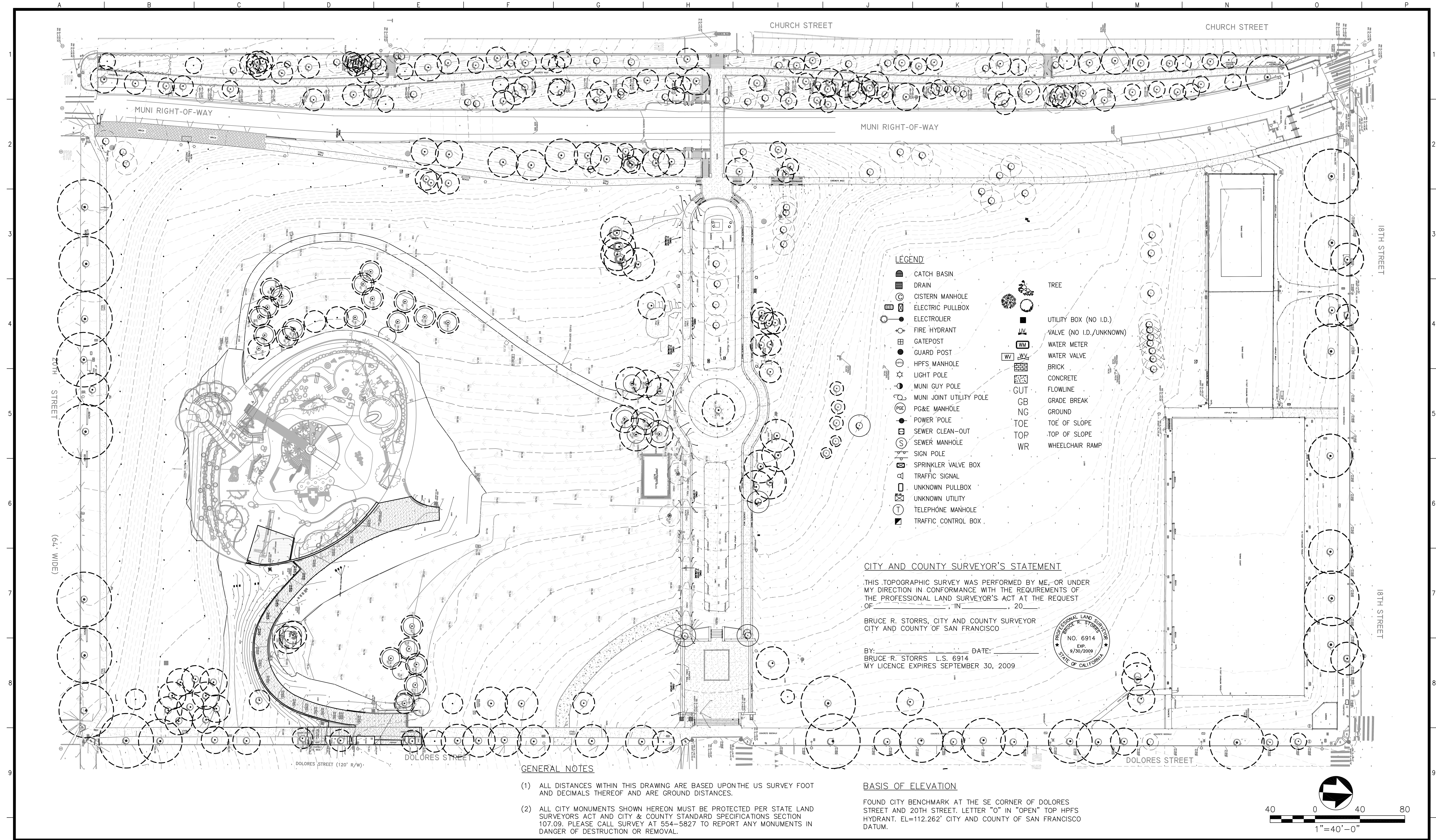


| | | |
|-----------|---------|-----------------------------|
| DESIGNED: | DATE: | APPROVED: |
| LH/DF | 08/2013 | |
| DRAWN: | DATE: | SECTION MANAGER DATE: |
| EB/GM | 08/2013 | |
| CHECKED: | DATE: | DEPUTY BUREAU MANAGER DATE: |
| | | |
| | | BUREAU MANAGER DATE: |
| | | |

SCALE:
 1"=40'
 SHEET OF SHEETS
 OF

| | |
|--|------------------------|
| MISSION DOLORES PARK REHABILITATION PROJECT | JOB ORDER NO. 3073V |
| CONSTRUCTION PHASING PLAN | DRAWING NO. G8 |
| | FILE NO. |
| | REV. NO. |

Drawing Path: V:\3073V_Mission_Dolores_Park\2_Design\Working_Drawings\EIA\Sheets\3073V_G8-G9_PHASE.dwg, Log:\Birmanshin Scale: 1
 Model Units: Inches
 Measurement Units are English
 Plot Time: Tue, 06 Aug 2013 - 3:52pm
 Xrefs: V:\3073V_Mission_Dolores_Park\2_Design\Working_Drawings\EIA\Base_Plans\3073V_L_BASE.dwg
 V:\3073V_Mission_Dolores_Park\2_Design\B067_TED.dwg
 V:\3073V_Mission_Dolores_Park\2_Design\Working_Drawings\EIA\Base_Plans\2008_309_Mission_Dolores.dwg
 V:\3073V_Mission_Dolores_Park\2_Design\Working_Drawings\EIA\Phase_Plans\0718-BASE.dwg



- LEGEND**
- CATCH BASIN
 - DRAIN
 - CISTERN MANHOLE
 - ELECTRIC PULLBOX
 - ELECTROLINER
 - FIRE HYDRANT
 - GATEPOST
 - GUARD POST
 - HPFS MANHOLE
 - LIGHT POLE
 - MUNI GUY POLE
 - MUNI JOINT UTILITY POLE
 - PG&E MANHOLE
 - POWER POLE
 - SEWER CLEAN-OUT
 - SEWER MANHOLE
 - SIGN POLE
 - SPRINKLER VALVE BOX
 - TRAFFIC SIGNAL
 - UNKNOWN PULLBOX
 - UNKNOWN UTILITY
 - TELEPHONE MANHOLE
 - TRAFFIC CONTROL BOX
 - TREE
 - UTILITY BOX (NO I.D.)
 - VALVE (NO I.D./UNKNOWN)
 - WATER METER
 - WATER VALVE
 - BRICK
 - CONCRETE
 - FLOWLINE
 - GRADE BREAK
 - GROUND
 - TOE OF SLOPE
 - TOP OF SLOPE
 - WHEELCHAIR RAMP

CITY AND COUNTY SURVEYOR'S STATEMENT

THIS TOPOGRAPHIC SURVEY WAS PERFORMED BY ME, OR UNDER MY DIRECTION IN CONFORMANCE WITH THE REQUIREMENTS OF THE PROFESSIONAL LAND SURVEYOR'S ACT AT THE REQUEST OF _____ IN _____, 20____.

BRUCE R. STORRS, CITY AND COUNTY SURVEYOR
CITY AND COUNTY OF SAN FRANCISCO

BY: _____ DATE: _____
BRUCE R. STORRS L.S. 6914
MY LICENCE EXPIRES SEPTEMBER 30, 2009

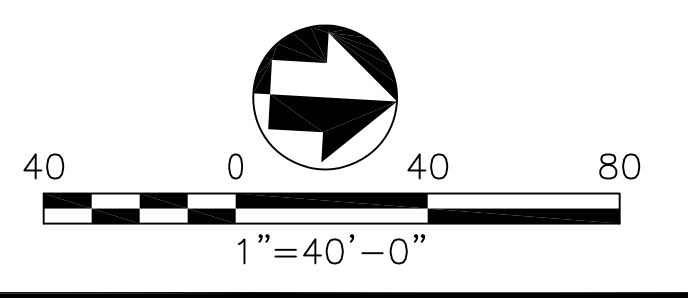


GENERAL NOTES

- (1) ALL DISTANCES WITHIN THIS DRAWING ARE BASED UPON THE US SURVEY FOOT AND DECIMALS THEREOF AND ARE GROUND DISTANCES.
- (2) ALL CITY MONUMENTS SHOWN HEREON MUST BE PROTECTED PER STATE LAND SURVEYORS ACT AND CITY & COUNTY STANDARD SPECIFICATIONS SECTION 107.09. PLEASE CALL SURVEY AT 554-5827 TO REPORT ANY MONUMENTS IN DANGER OF DESTRUCTION OR REMOVAL.

BASIS OF ELEVATION

FOUND CITY BENCHMARK AT THE SE CORNER OF DOLORES STREET AND 20TH STREET. LETTER "O" IN "OPEN" TOP HPFS HYDRANT. EL=112.262' CITY AND COUNTY OF SAN FRANCISCO DATUM.



| NO. | DATE | DESCRIPTION | BY | APP. |
|---|------|-------------|----|------|
| TABLE OF REVISIONS | | | | |
| THIS DRAWING WAS LAST MODIFIED: 07/24/13 17:27, BY: eblls | | | | |

| REFERENCE INFORMATION & FILE NO. OF SURVEYS |
|---|
| |



Building Design & Construction
DEPARTMENT OF PUBLIC WORKS
CITY AND COUNTY OF SAN FRANCISCO

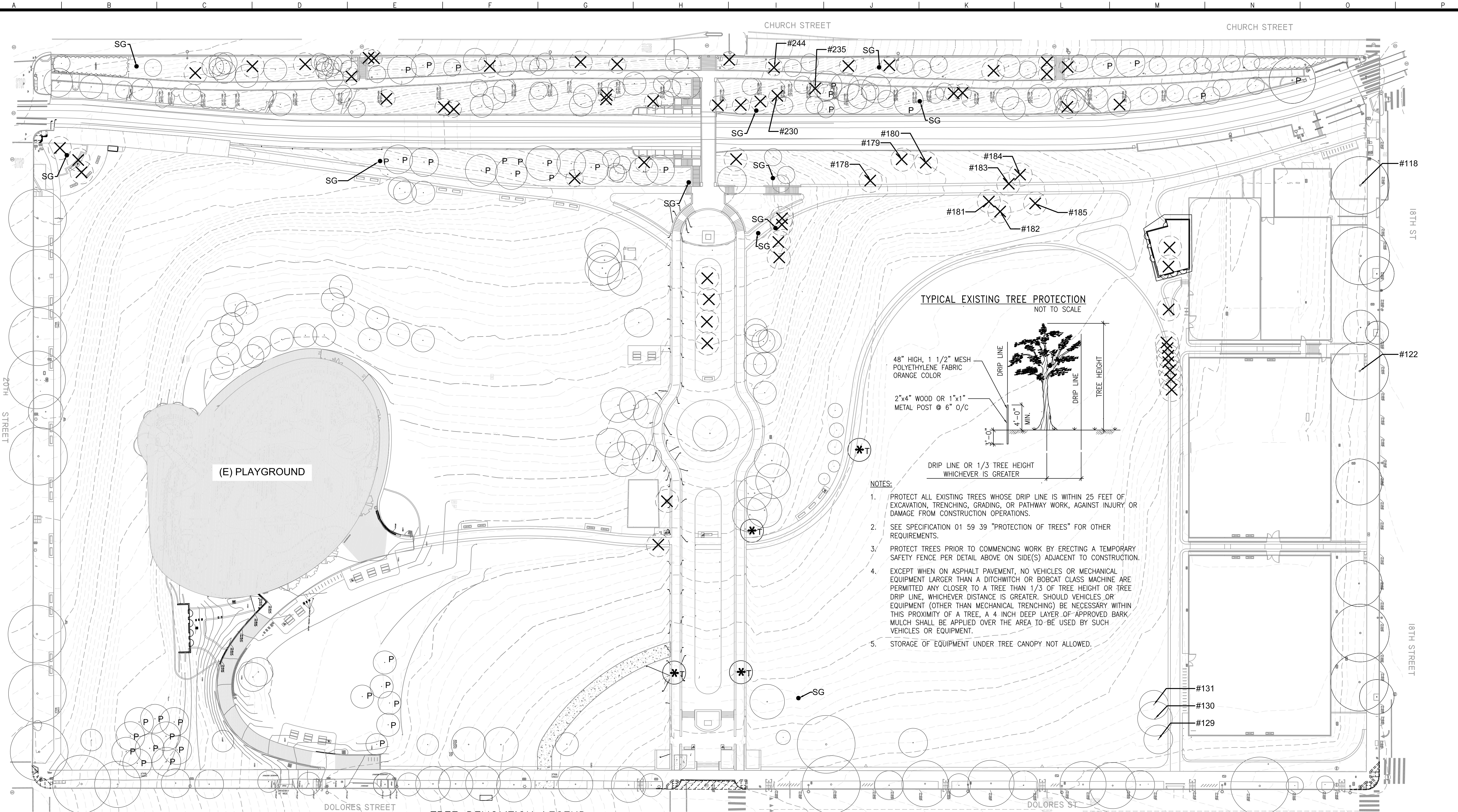
| | | |
|-----------|---------|-----------------------------|
| DESIGNED: | DATE: | APPROVED: |
| LH | 08/2013 | |
| DRAWN: | DATE: | SECTION MANAGER DATE: |
| EB | 08/2013 | |
| CHECKED: | DATE: | DEPUTY BUREAU MANAGER DATE: |
| | | |
| | | BUREAU MANAGER DATE: |

| |
|-----------------|
| SCALE: |
| 1"=40' |
| SHEET OF SHEETS |
| OF |

| | |
|---------------|-------|
| JOB ORDER NO. | 3073V |
| DRAWING NO. | G9 |
| FILE NO. | |
| REV. NO. | |

MISSION DOLORES PARK
REHABILITATION PROJECT
TOPOGRAPHIC SURVEY REFERENCE PLAN

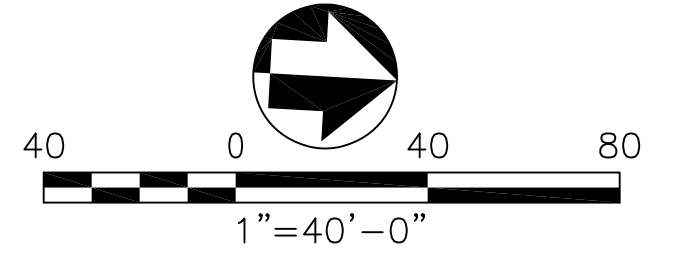
Drawing Path: V:\3073V_Mission_Dolores_Park\Drawings\EIA\Sheets\3073V_C9_Survey.dwg, Login: eblls, Dimension Scale: 40
 Base Plans: 2008-30B Mission Dolores.dwg
 V:\3073V_Mission_Dolores_Park\Drawings\EIA\Sheets\3073V_C9_Survey.dwg, Login: eblls, Dimension Scale: 40
 V:\3073V_Mission_Dolores_Park\Drawings\EIA\Sheets\3073V_C9_Survey.dwg, Login: eblls, Dimension Scale: 40
 Plot Time: Tue, 06 Aug 2013 5:48pm
 Measurement Units are English



- NOTES:**
1. PROTECT ALL EXISTING TREES WHOSE DRIP LINE IS WITHIN 25 FEET OF EXCAVATION, TRENCHING, GRADING, OR PATHWAY WORK, AGAINST INJURY OR DAMAGE FROM CONSTRUCTION OPERATIONS.
 2. SEE SPECIFICATION 01 59 39 "PROTECTION OF TREES" FOR OTHER REQUIREMENTS.
 3. PROTECT TREES PRIOR TO COMMENCING WORK BY ERECTING A TEMPORARY SAFETY FENCE PER DETAIL ABOVE ON SIDE(S) ADJACENT TO CONSTRUCTION.
 4. EXCEPT WHEN ON ASPHALT PAVEMENT, NO VEHICLES OR MECHANICAL EQUIPMENT LARGER THAN A DITCHWITCH OR BOBCAT CLASS MACHINE ARE PERMITTED ANY CLOSER TO A TREE THAN 1/3 OF TREE HEIGHT OR TREE DRIP LINE, WHICHEVER DISTANCE IS GREATER. SHOULD VEHICLES OR EQUIPMENT (OTHER THAN MECHANICAL TRENCHING) BE NECESSARY WITHIN THIS PROXIMITY OF A TREE, A 4 INCH DEEP LAYER OF APPROVED BARK MULCH SHALL BE APPLIED OVER THE AREA TO BE USED BY SUCH VEHICLES OR EQUIPMENT.
 5. STORAGE OF EQUIPMENT UNDER TREE CANOPY NOT ALLOWED.

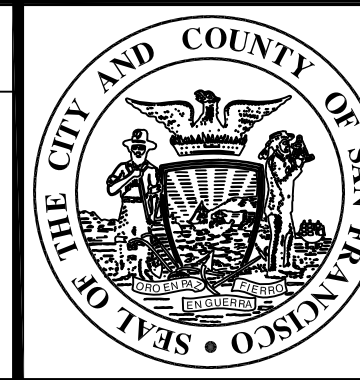
TREE DEMOLITION LEGEND:

| | | | | | |
|--|---|--|---|--|---|
| | EXISTING TREE TO REMAIN, TYP. PROTECT PER TREE PROTECTION REQUIREMENTS AS SHOWN | | EXISTING TREE TO BE REMOVED, GRIND STUMP 3'-0" BELOW GRADE U.O.N. | | PRUNE TREE, SEE SPECS. |
| | ARBORIST TAG NUMBER | | GRIND STUMP | | TRANSPLANT, SEE SPECS. & L6.00 PLANTING PLANS |



| NO. | DATE | DESCRIPTION | BY | APP. |
|---|------|-------------|----|------|
| TABLE OF REVISIONS | | | | |
| THIS DRAWING WAS LAST MODIFIED: 08/09/13 12:05, BY: eblls | | | | |

REFERENCE INFORMATION & FILE NO. OF SURVEYS



Building Design & Construction
 DEPARTMENT OF PUBLIC WORKS
 CITY AND COUNTY OF SAN FRANCISCO



DESIGNED: DATE: LH/AA 08/2013
 DRAWN: DATE: EB/GM 08/2013
 CHECKED: DATE:

APPROVED: SECTION MANAGER DATE: DEPUTY BUREAU MANAGER DATE: BUREAU MANAGER DATE:

SCALE: 1"=40'
 SHEET OF SHEETS OF

MISSION DOLORES PARK
 REHABILITATION PROJECT
 TREE REMOVAL PLAN

JOB ORDER NO. 3073V
 DRAWING NO. L1.02
 FILE NO.
 REV. NO.

Drawing Path: V:\3073V_Mission_Dolores_Park\2_Design\Working_Drawings\EIA\Sheets\3073V_L1.01-1.02_DEMO.dwg, Dimensions: scale: 40
 Plot Time: Fri, 08 Aug 2013 - 3:34pm
 Model Units: Feet
 Measurement Units are English
 V:\3073V_Mission_Dolores_Park\2_Design\Working_Drawings\EIA\3073V_L_BASE.dwg
 V:\3073V_Mission_Dolores_Park\2_Design\Working_Drawings\EIA\3073V_L_MISSION.dwg
 V:\3073V_Mission_Dolores_Park\2_Design\Working_Drawings\EIA\3073V_L_RSF.dwg

