



San Francisco Groundwater Supply South Windmill Well Station

- BUILDING LOCATION:** The pump station is located at the existing South Windmill Deepwell Pump Station site. It's close to the Murphy Windmill and Millwright's Cottage.
- PROJECT SIZE:** The total building area is 798 square ft. (19' x 42') Roof height: 19'-0" to top of roof
- FUNCTION:** Pump Station and Domestic Water Supply
- BUILDING MATERIALS:** Slate tile roof, reinforced concrete, cement plaster, galvanized metal doors and aluminum louvers, zinc roof gutters and downspouts, precast concrete grills.
- DESIGN INTENT:** A new single story, reinforced concrete building with a drilled pier foundation will be constructed to replace the existing wood frame structure that was originally built in 2002. The design for the South Windmill Pump Station has been modified to provide a more harmonious relationship to the scale and architectural elements of the neighboring park facilities.
- Windows and louvers on the facade are required for operation. The fiberglass translucent panel above the pump can be removed for future pump removal and maintenance.
- Painted stucco, galvanized steel and zinc materials have been chosen for durability and ease of maintenance.
- Landscape areas provide a further softening of the facade and reduce surface run-off from stormwater.



Aerial View showing Murphy Windmill, Millwright's Cottage and Existing Well Station



Murphy Windmill & Millwright's Cottage seen from MLK Jr. Drive



Millwright's Cottage





Northeast View of Existing Well Station

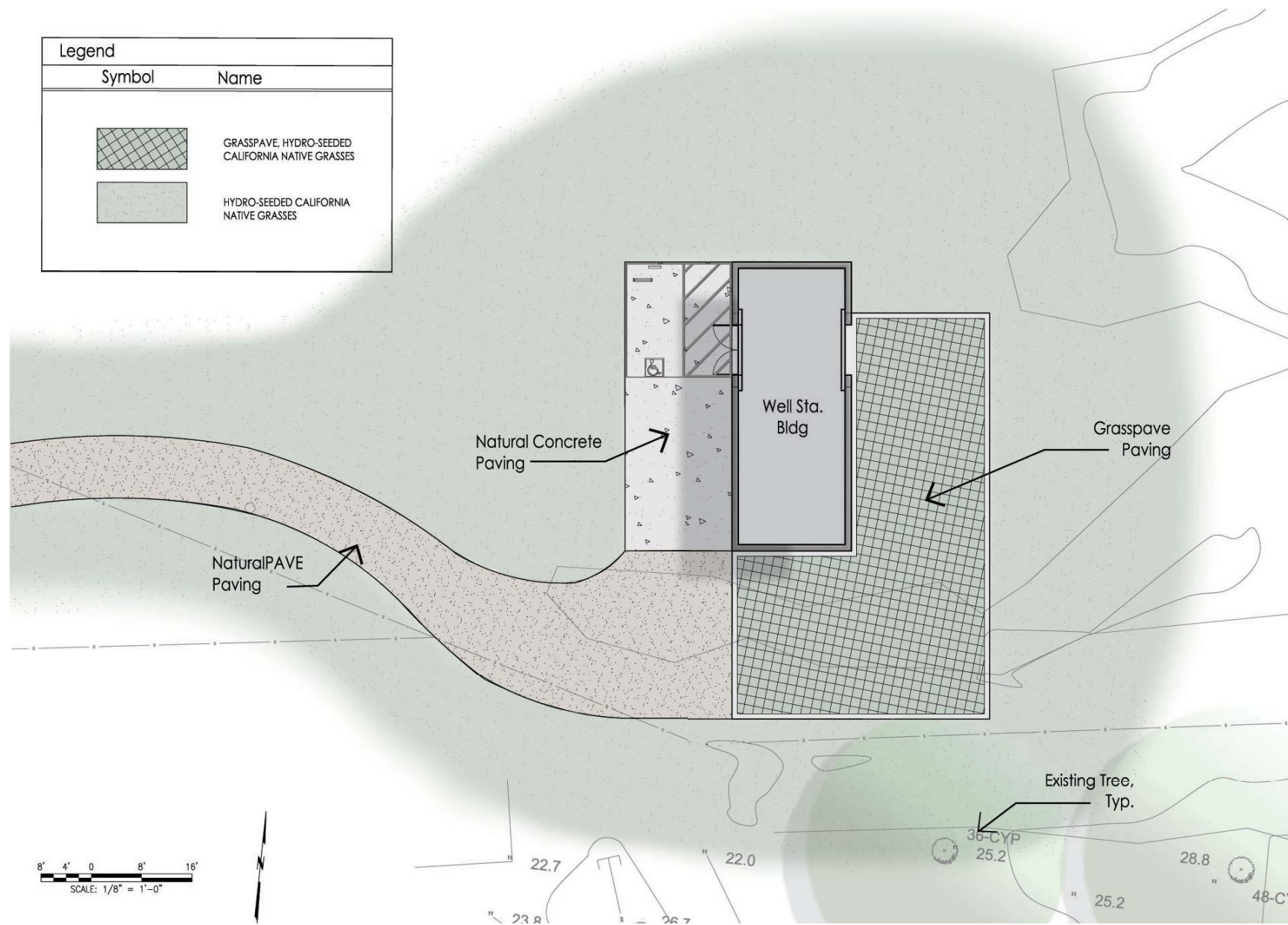


Southeast View Of Existing Well Station

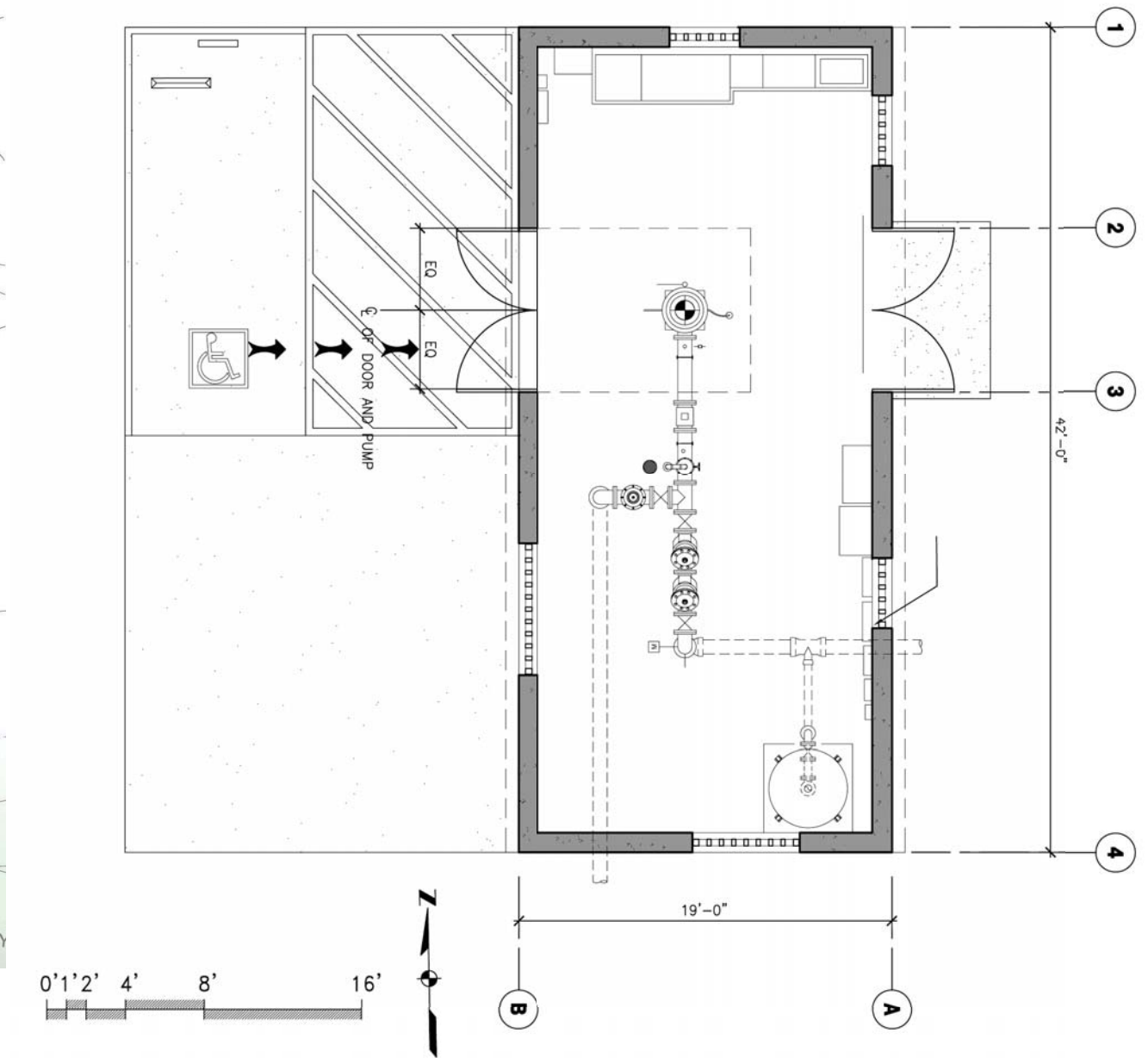


Northwest View of Existing Beach Chalet Field House

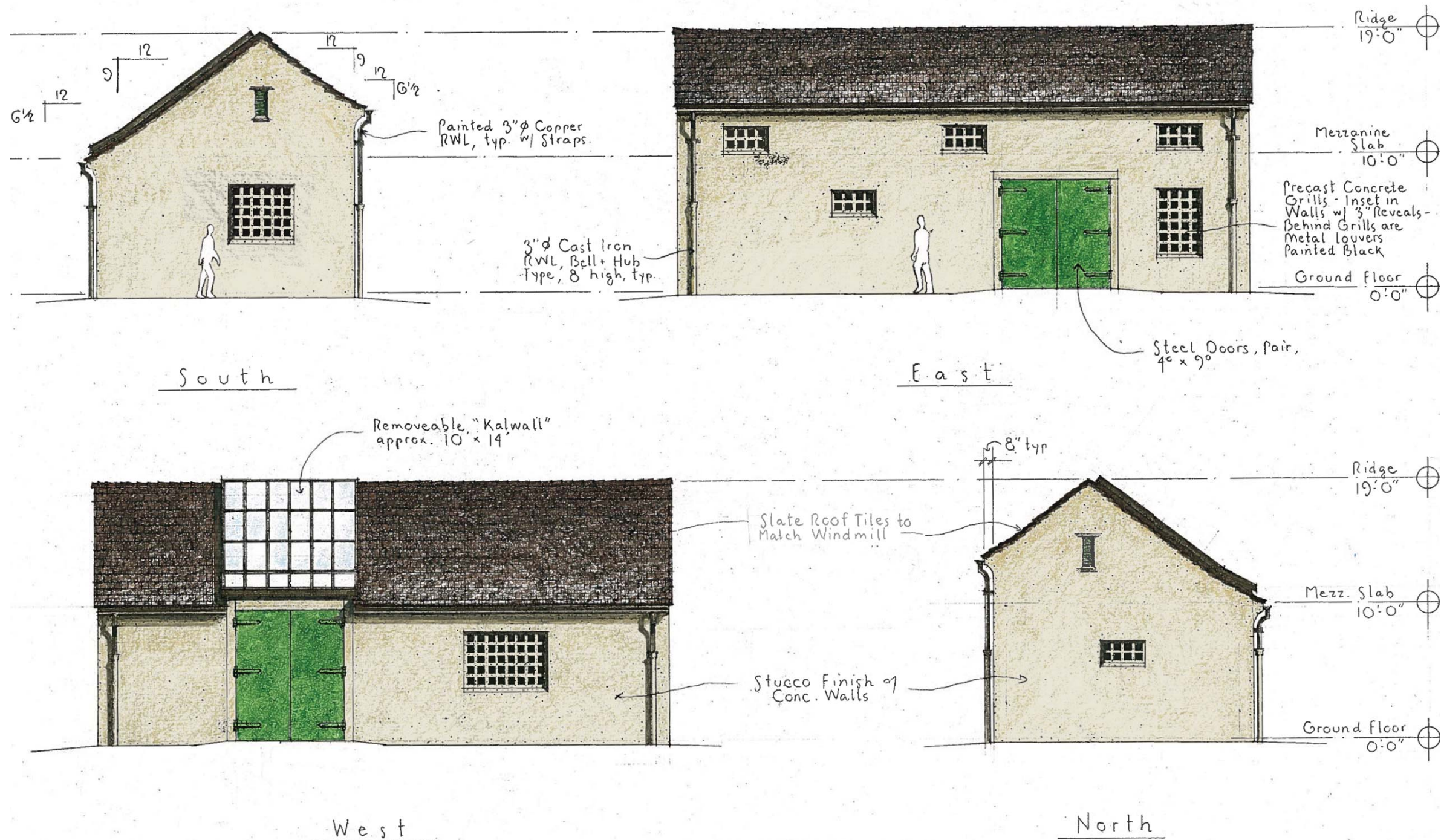
Legend	
Symbol	Name
	GRASSPAVE, HYDRO-SEEDED CALIFORNIA NATIVE GRASSES
	HYDRO-SEEDED CALIFORNIA NATIVE GRASSES

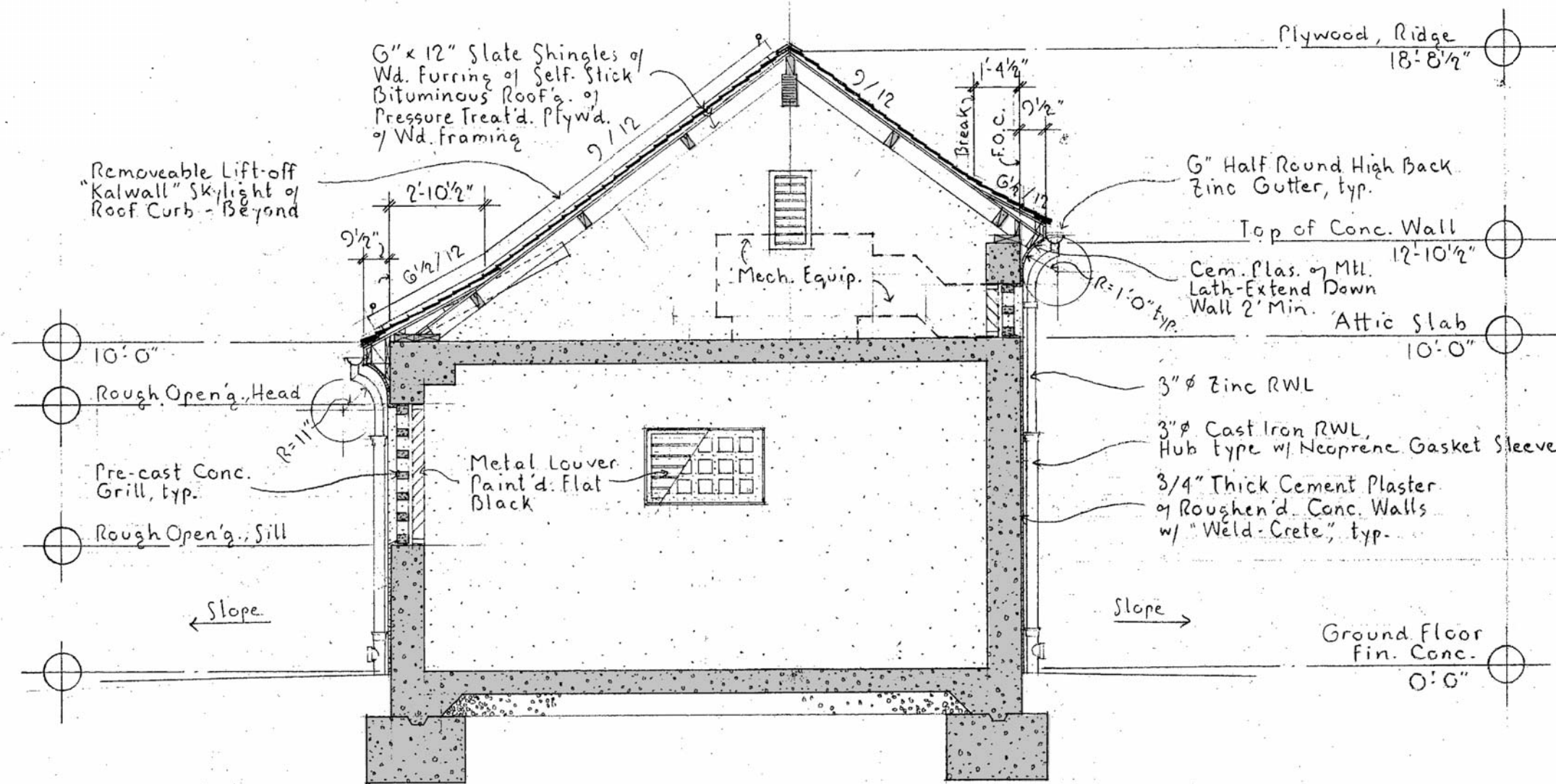


Site Plan



Floor Plan





Section look'g. North
 1/4" = 1'-0"

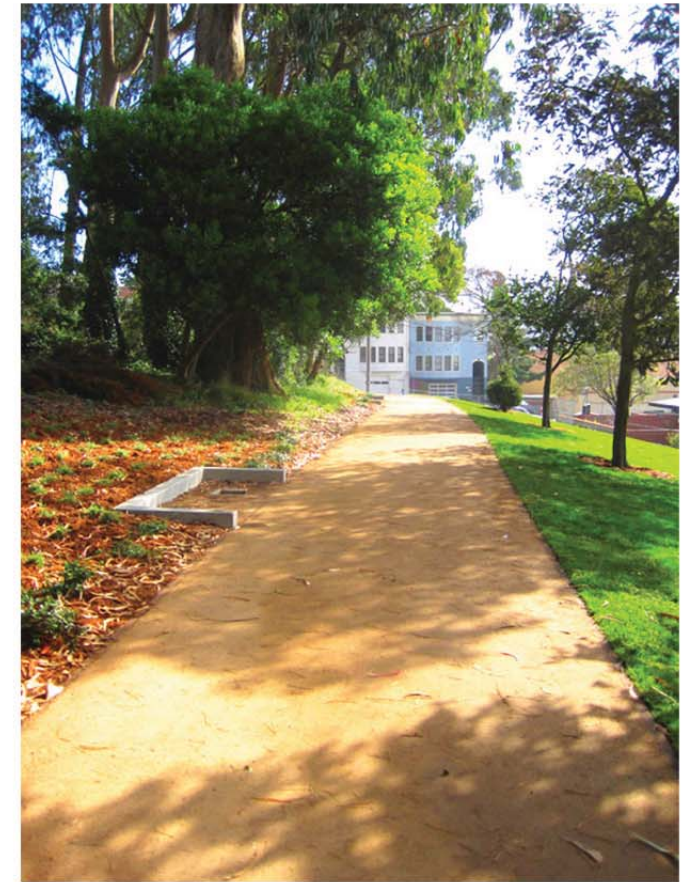




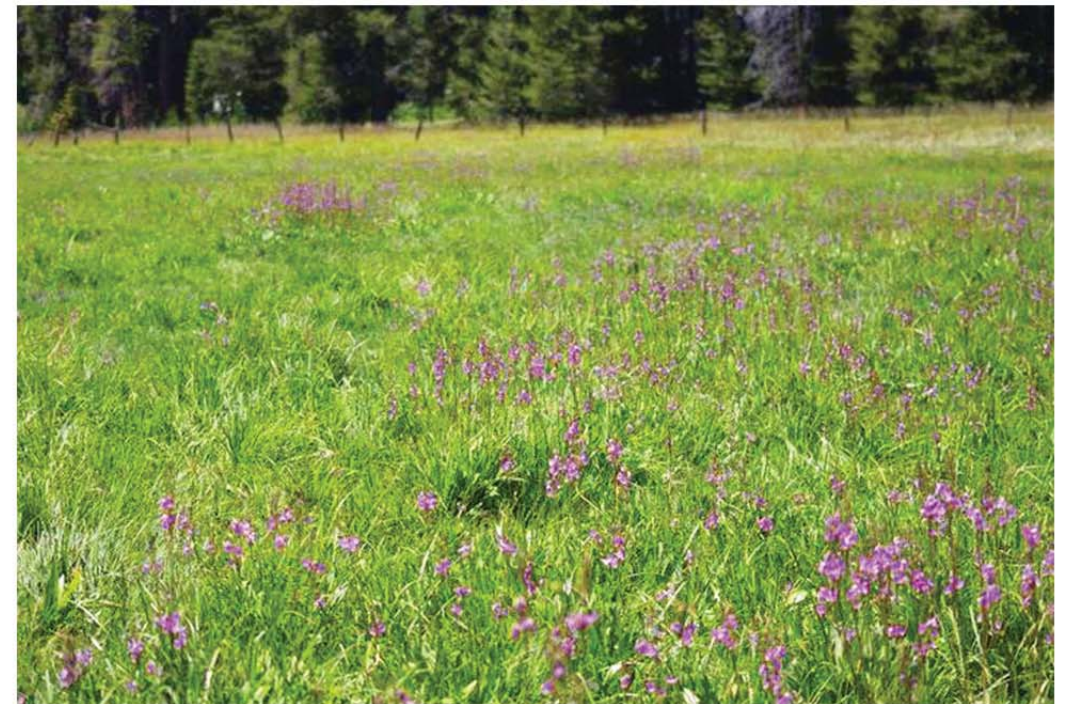




Grasspave Paving



NaturalPAVE Paving



Natural Meadow
Wildflower Hydroseeding

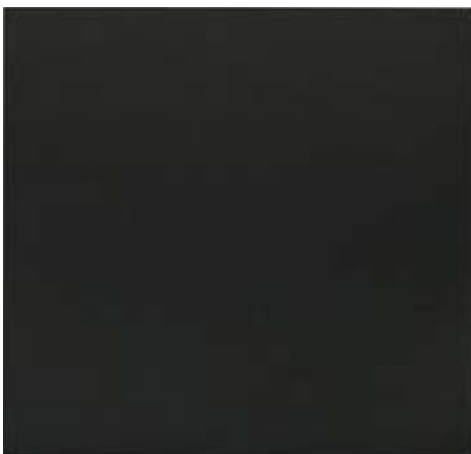




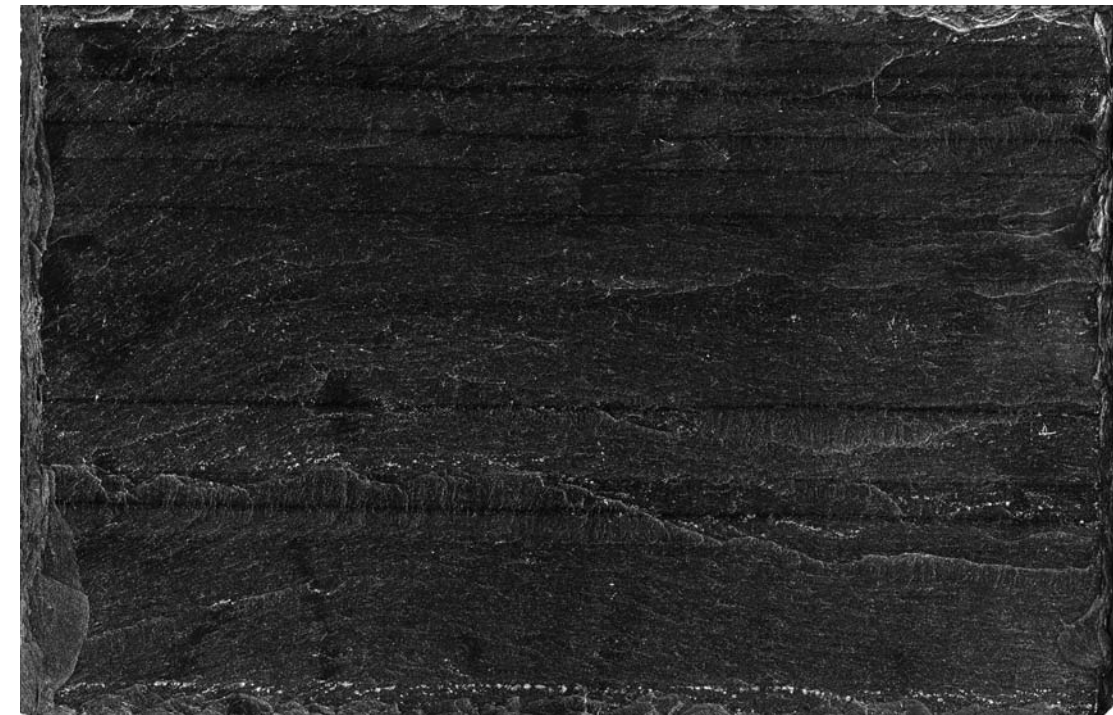
Natural PAVE[®] XL
Fresco Plus



Dunn-Edwards Paints[®]
DE5587 Shaded Spruce



VMZINC[®] ANTHRA ZINC



North Country Slate[®] UNFADING BLACK



Stucco Texture