

BURROWS STREET

DESIGN REVIEW PHASE 1 & 2

A neighborhood pocket park
Phase 1 & 2 Civic Design Review - 1.13.2014

THE SITE



BEFORE PHASE 1



ELEVATION FOR PROPOSED BENCH

THE SITE - POST PHASE 1



RIBBON CUTTING CEREMONY



COMMUNITY TREE PLANTING



POCKET PARK POST PHASE 1



NEW BIOSWALE, RETAINING WALL, BRIDGE



COMMUNITY ENGAGEMENT



INITIAL DISCUSSIONS W/ MAYOR LEE



DESIGN DEVELOPMENT MEETING



DESIGN MEETING



COMMUNITY INPUT



COMMUNITY MEETING WITH ARTIST

SCHEMATIC IDEAS

Neglected



Urban wasteland



Respected



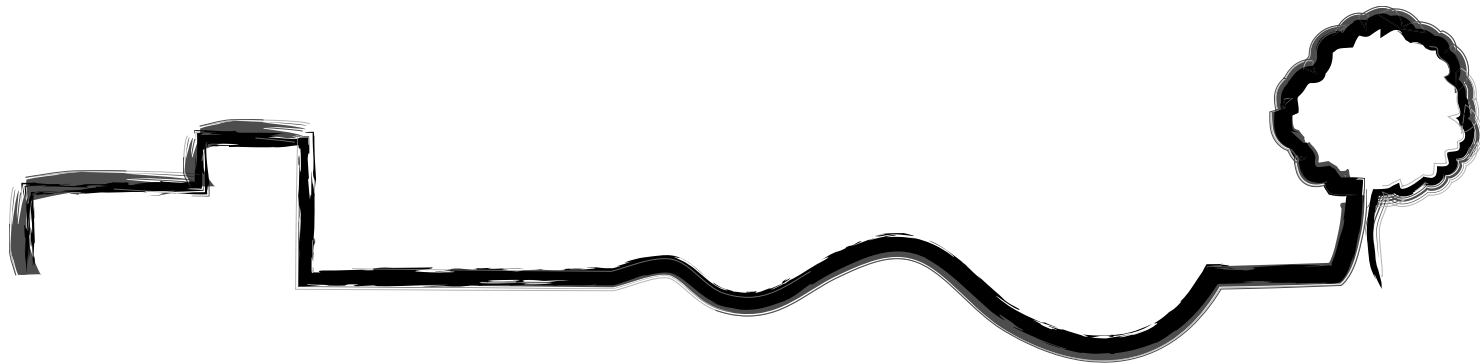
A space in the city



Owned



A place in the city



From Urban

To Natural/Comfortable

INSPIRATION - CHALLENGE THE TRADITIONAL SEAT



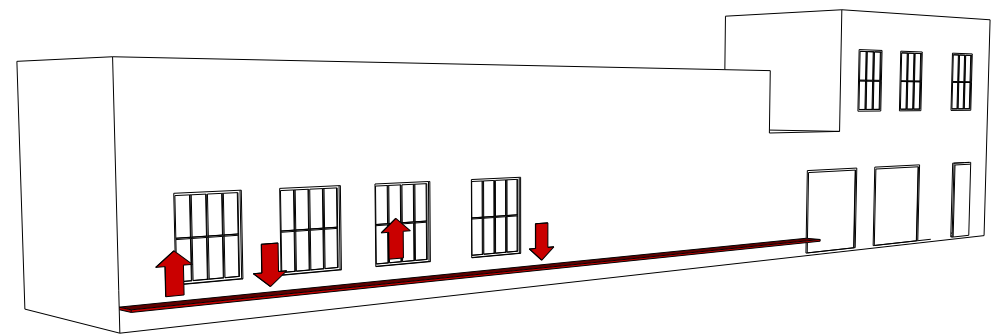
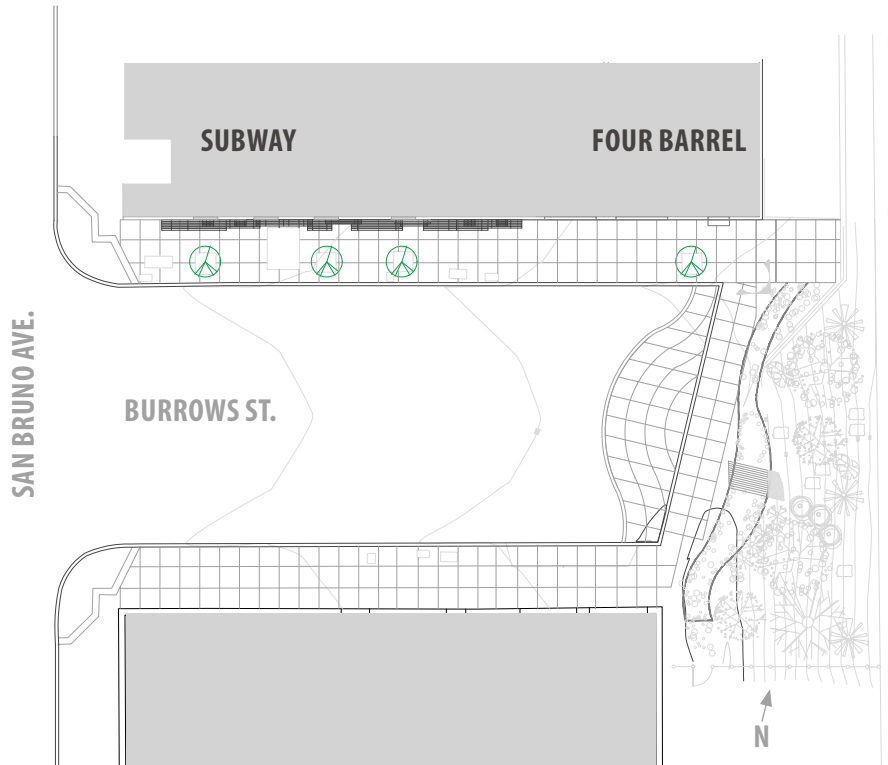
JEPPE HEIN - ARTIST



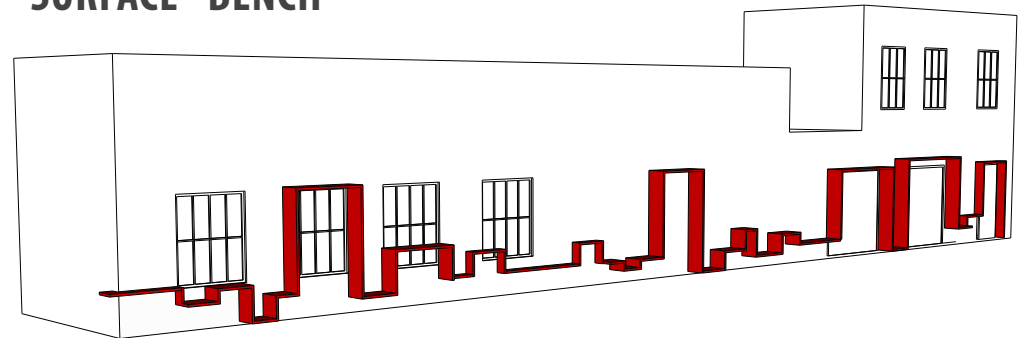
SMALL SURFACES



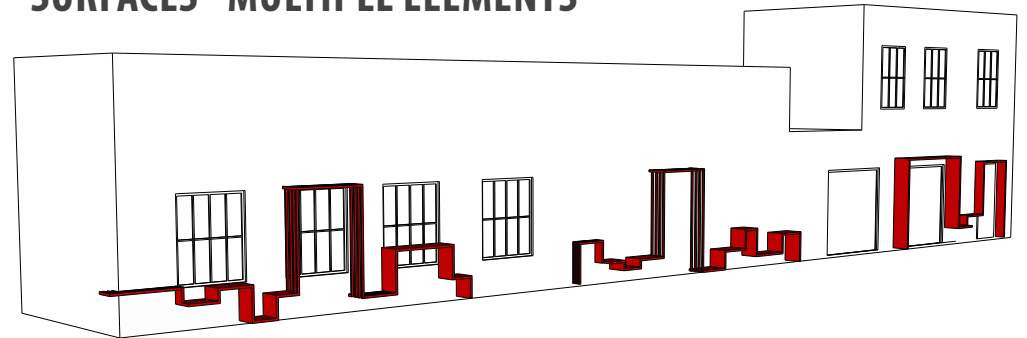
OUR VISION



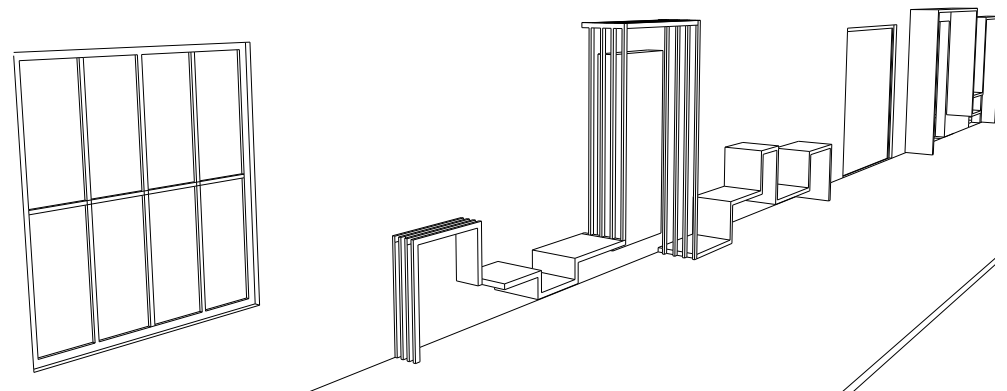
SURFACE - BENCH



SURFACES - MULTIPLE ELEMENTS



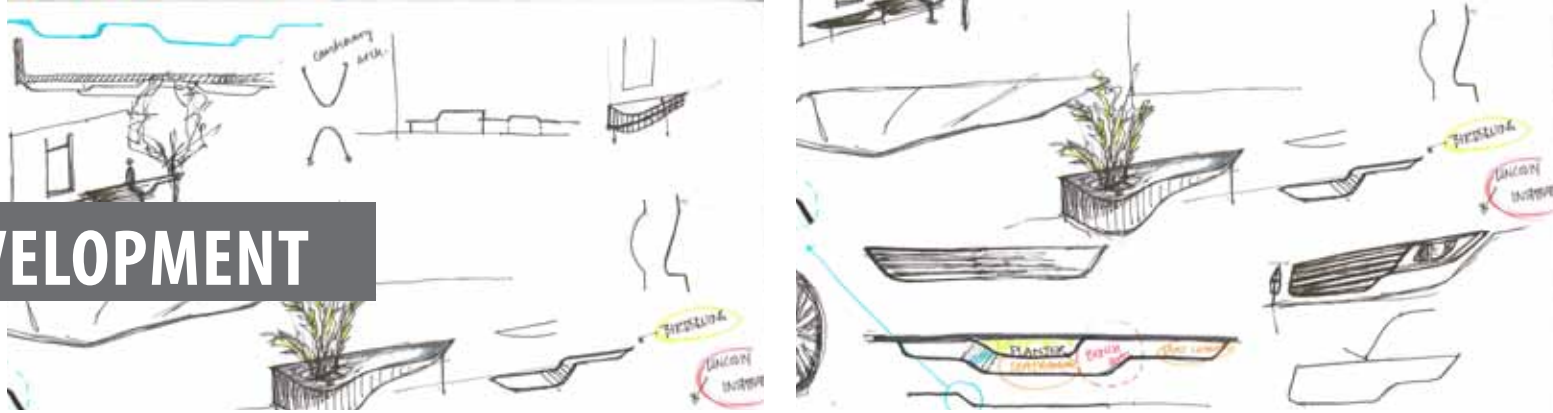
SURFACES - ARTICULATED ELEMENTS



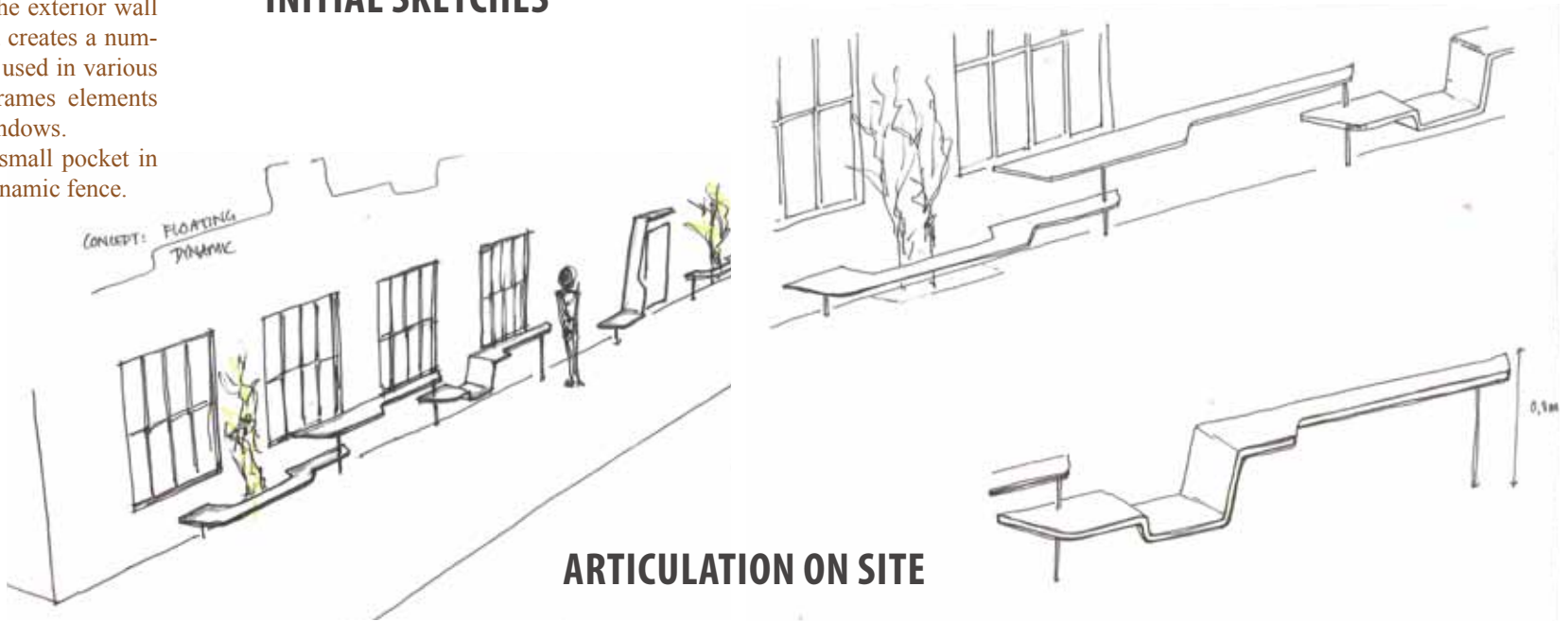
SCHEMATIC DEVELOPMENT

The morphing wall will form a gathering element that connects the street and the pocket park.

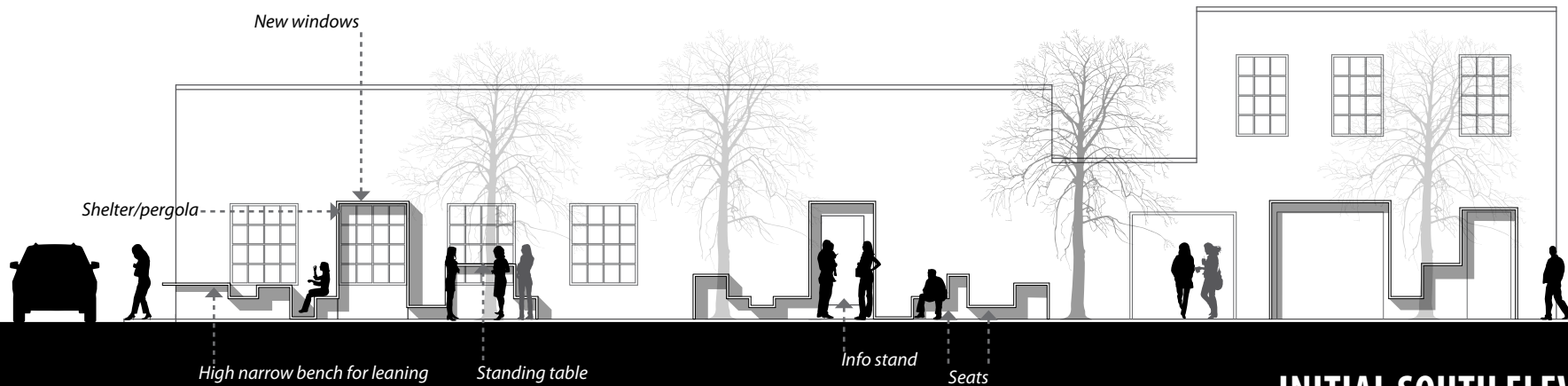
The structure is attached to the exterior wall of the 'Subway' building and creates a number of surfaces which can be used in various ways. The structure also frames elements such as the kiosk and new windows. As the structure reaches the small pocket in the back it merges into the dynamic fence.



INITIAL SKETCHES



ARTICULATION ON SITE



INITIAL SOUTH ELEVATION

1 BURROWS STREET

PHASE 2 DESIGN DEVELOPMENT

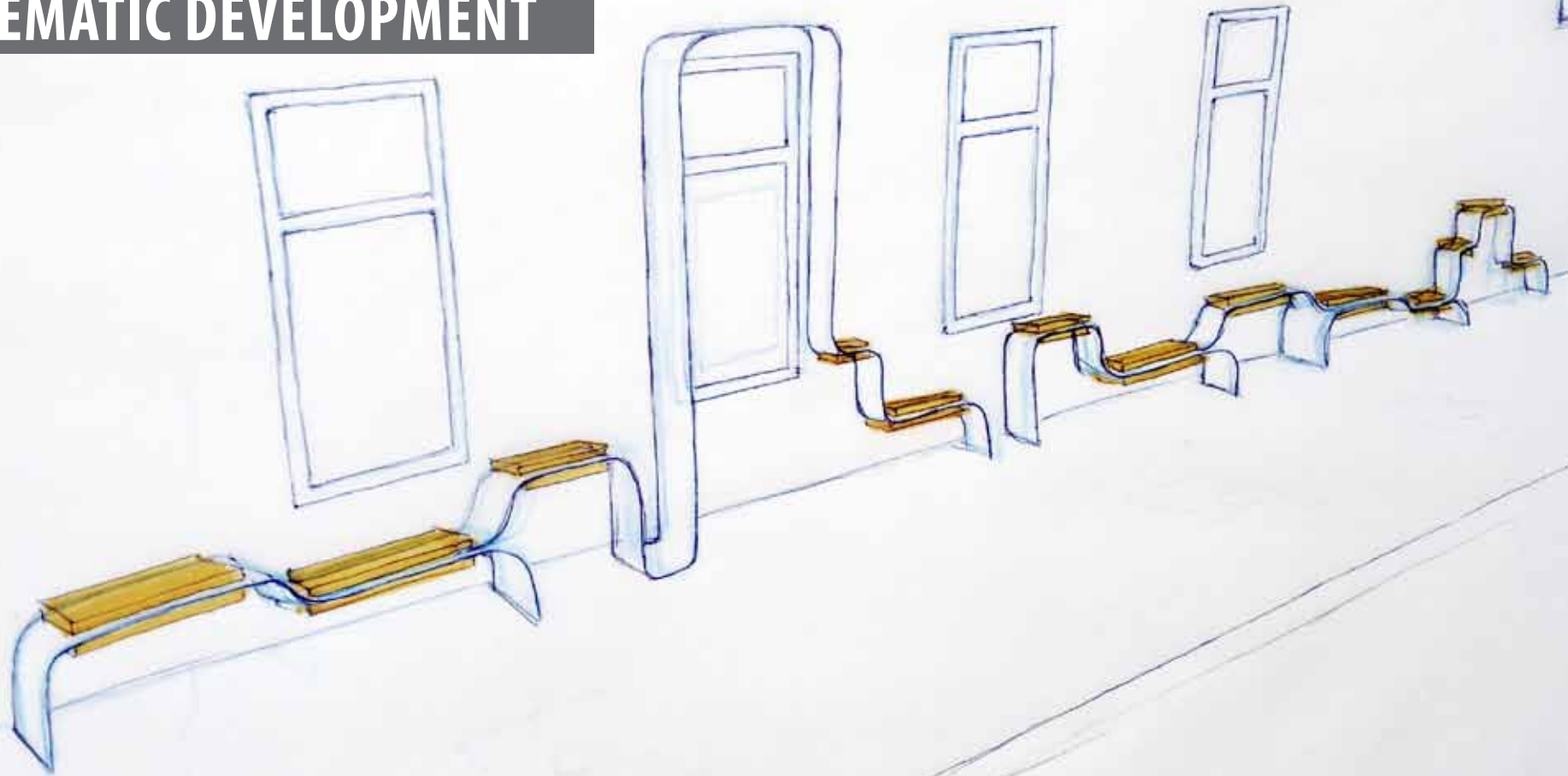
OUR VISION

architecture for humanity



INITIAL SITE RENDERING - INCLUDING PROPOSED GREEN WALL, MURAL & FENCE

SCHEMATIC DEVELOPMENT



NEW SCHEME DEVELOPMENT

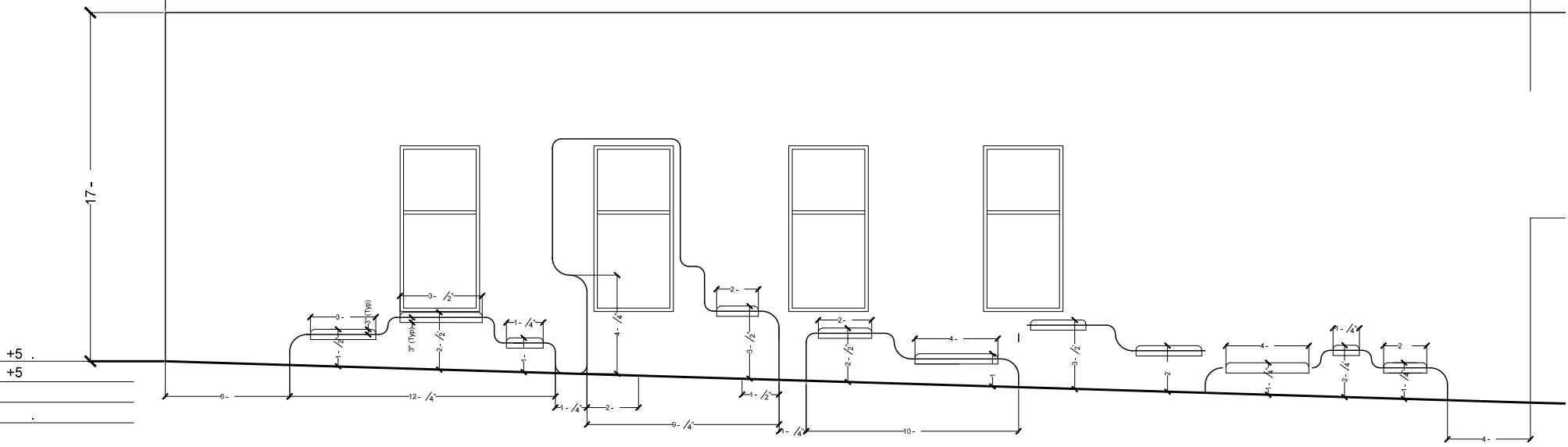
REVISED DESIGN



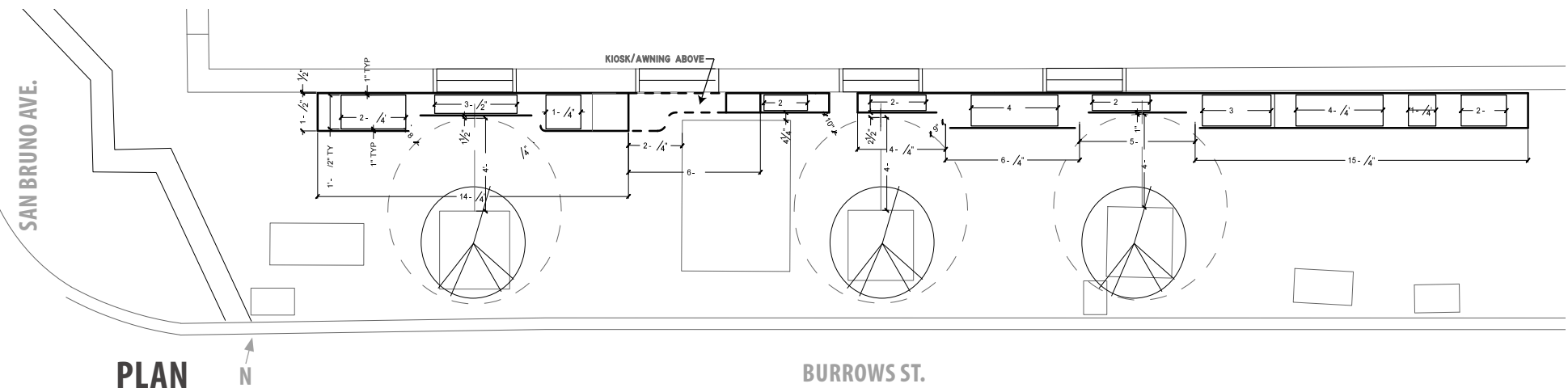
NEW DESIGN

DESIGN DEVELOPMENT

65' - 1/4"
SUBWAY



SOUTH ELEVATION



PLAN

BURROWS ST.

MATERIALS



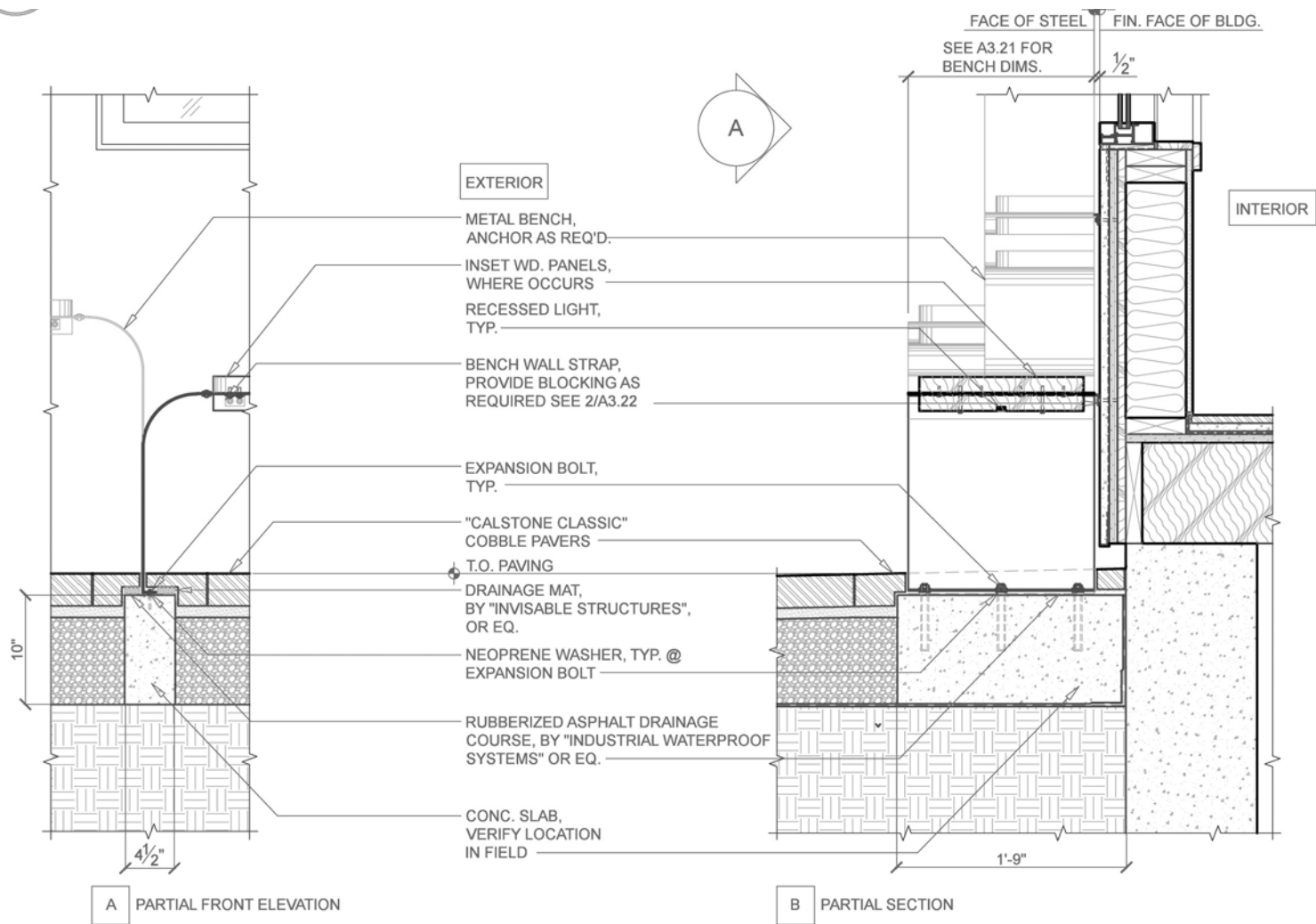
Bench structure:
Stainless Steel formed sheet
-- 10 ga., satin mill finish



Bench seats & countertops:
Solid Redwood block:
rounded edges and sanded,
hidden & countersunk fasteners



DESIGN DEVELOPMENT



1 Anchoring Detail
 A3.22 Scale: 1-1/2" = 1'-0"