



Restroom Bond Program

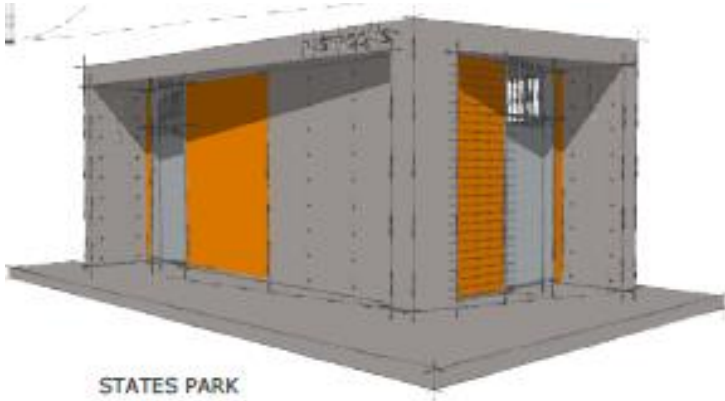
Civic Design Review

“Contemporary” Design – Phase 3
For DuPont Courts Restroom

February 10, 2014



States Street Restroom





DuPont Tennis Courts



31ST. AVENUE VIEW



31TH. AVENUE VIEW

SURROUNDING AREAS



LOCATION OF EXISTING RESTROOMS

PROJECT LOCATION - SITE MAP



EXISTING CONDITIONS



Changes Since Phase 2

Phase 2 Comments

- Use steel form with snap ties (ala Tadao Ando)
- Use blue tile on exterior

Approved for States St.

- Expanded plumbing chase
- Slits on privacy walls



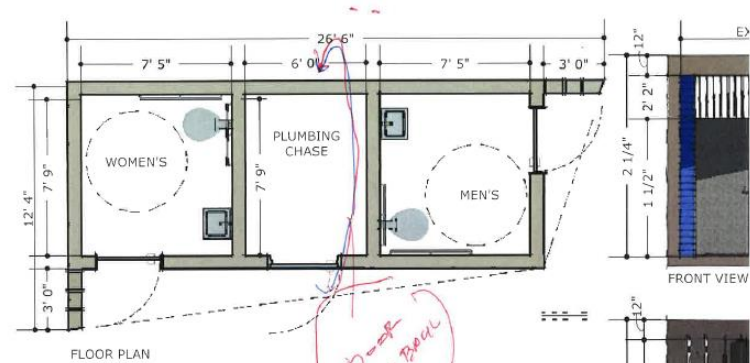
Administrative Approval

Hi Marvin,

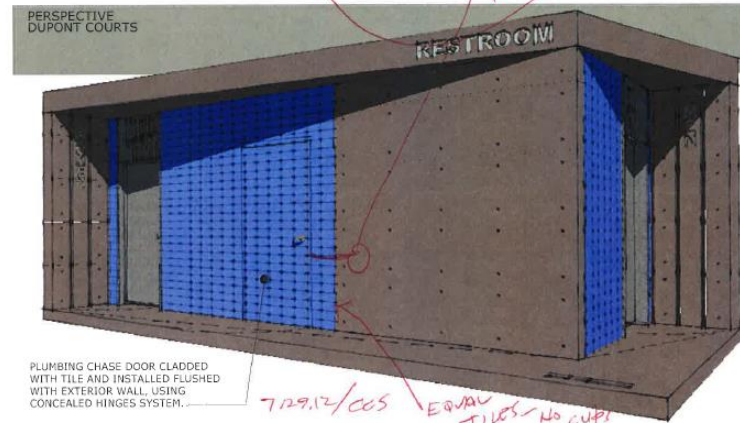
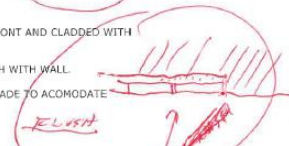
I've attached Commissioner Smith's comments on the designs. I followed up with him to explain that the maintenance doors need to be on the front of the buildings and he agreed that it is okay. Please see the other recommendations.

Thanks,

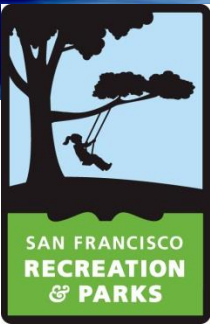
Vicky Knoop, Program Manager
Civic Design Review | San Francisco Arts Commission



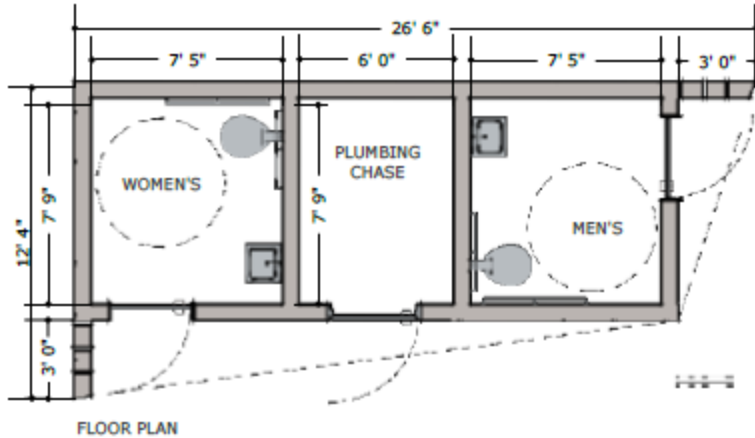
NOTES:
PLUMBING CHASE DOOR MOVE FROM BACK TO THE FRONT AND CLADDED WITH MATCHING TILE, FLUSHED WITH WALL.
CONCEALED HINGES SYSTEM TO INSTALL DOOR FLUSH WITH WALL.
EXTEND TILE COVERING SURFACE ON THE FRONT FACADE TO ACOMODATE RELOCATION OF CHASE DOOR.



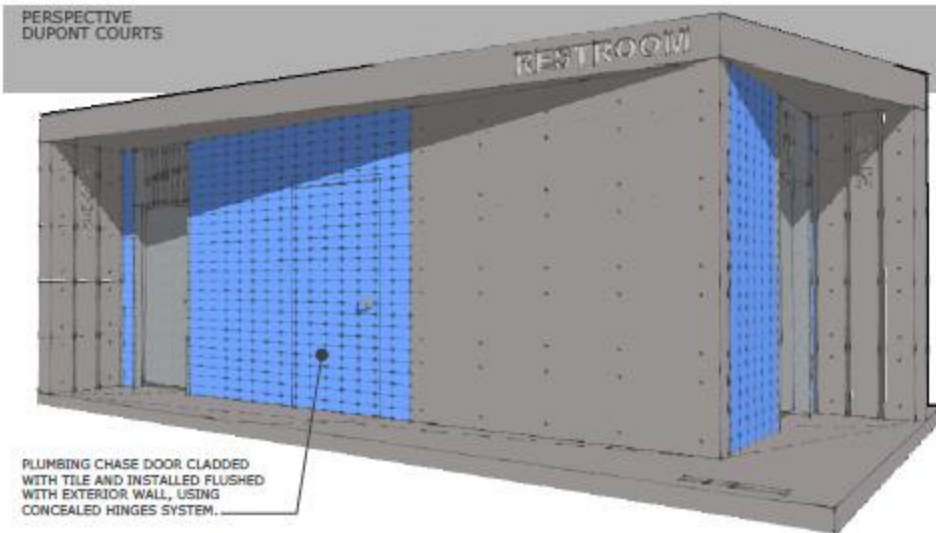
PLUMBING CHASE DOOR CLADDED WITH TILE AND INSTALLED FLUSHED WITH EXTERIOR WALL, USING CONCEALED HINGES SYSTEM.



Summary of Changes

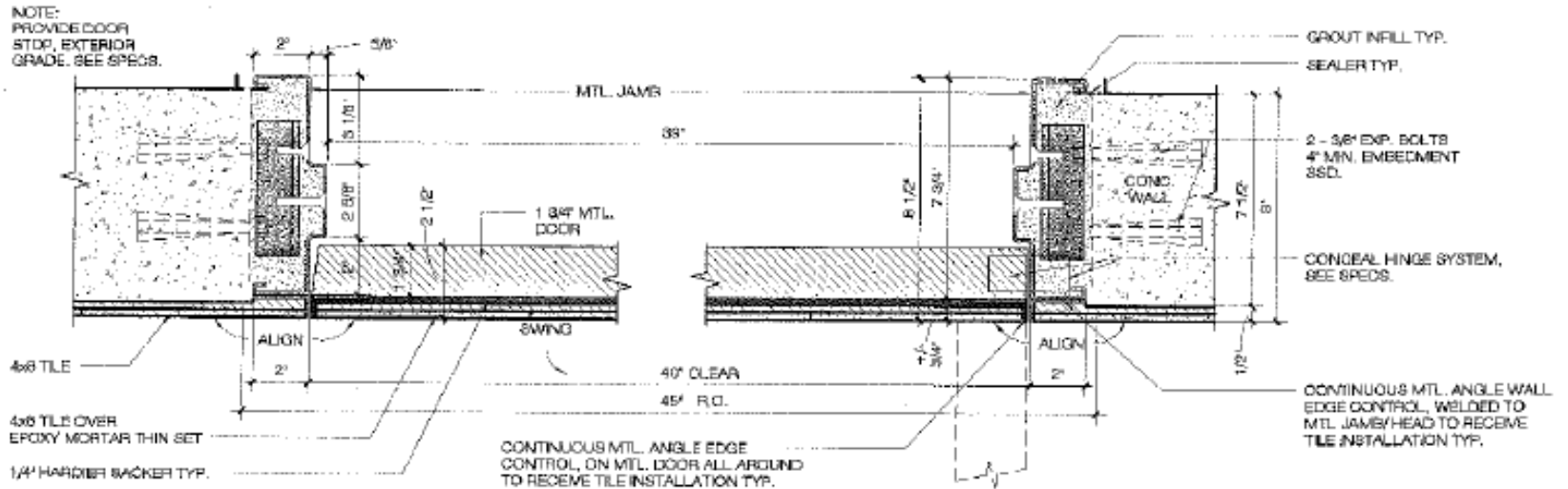


- Use steel form with snap ties (ala Tadao Ando)
- Use blue tile on exterior
- Expanded plumbing chase
- Slits on privacy walls
- Relocate plumbing chase door to front
- Flush door with tiles
- Tiles to contain no cuts





Plumbing Chase Door: Detail 11 - Sheet A7.0



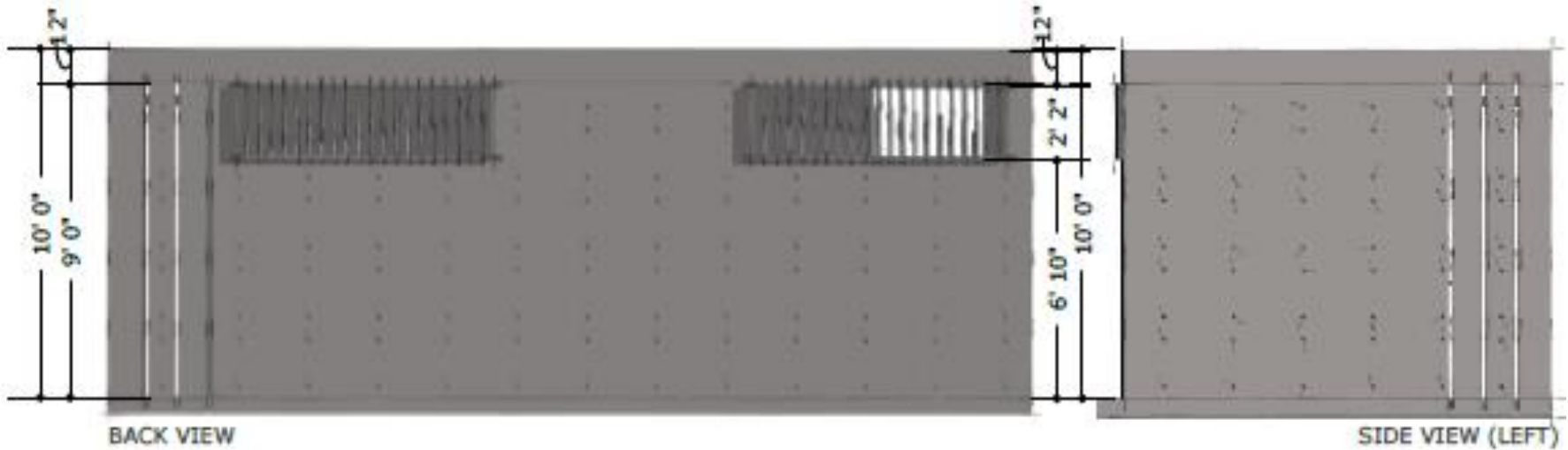
11

PLUMBING CHASE DOOR JAMB/ HEAD DETAIL

3" = 1'-0"



Back and Side Views





Contemporary Design At DuPont Courts



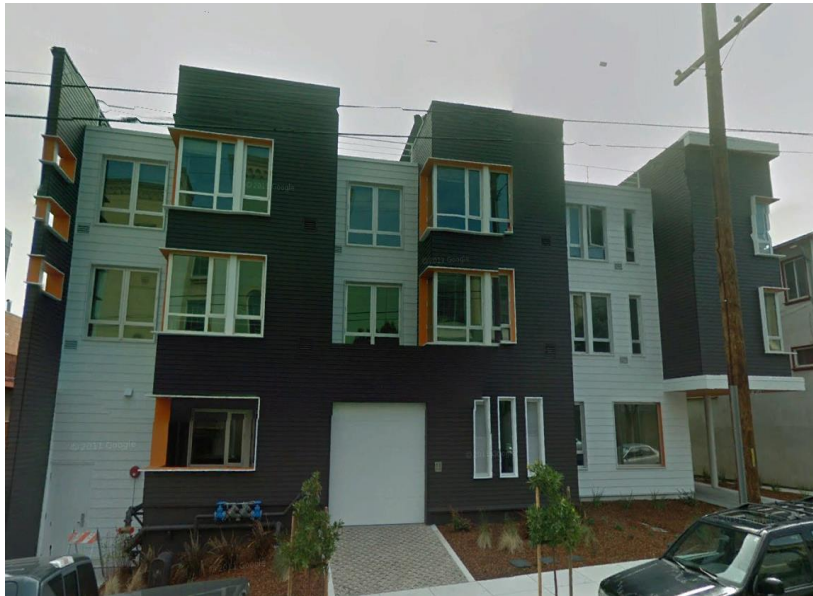


Architectural Diversity

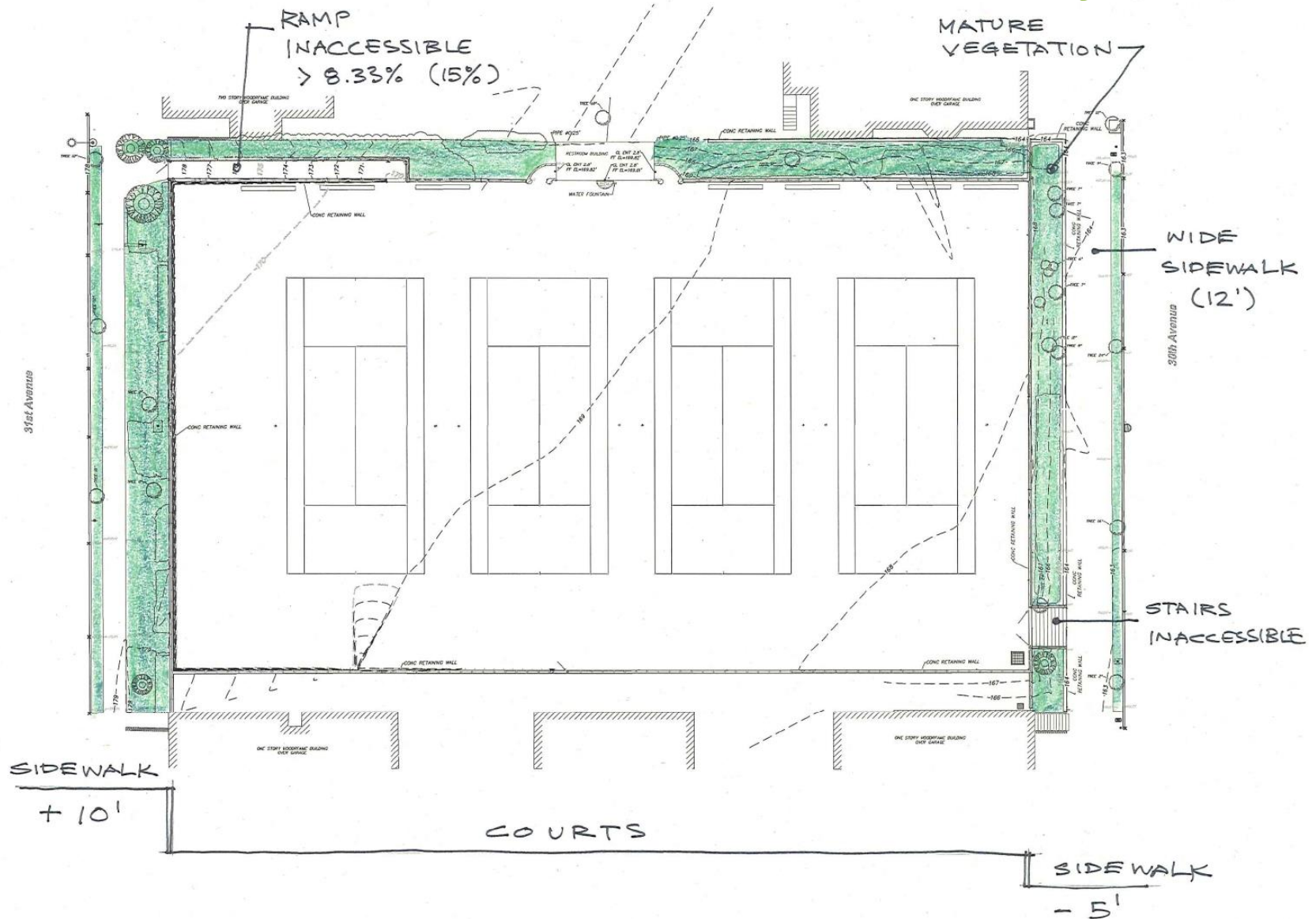




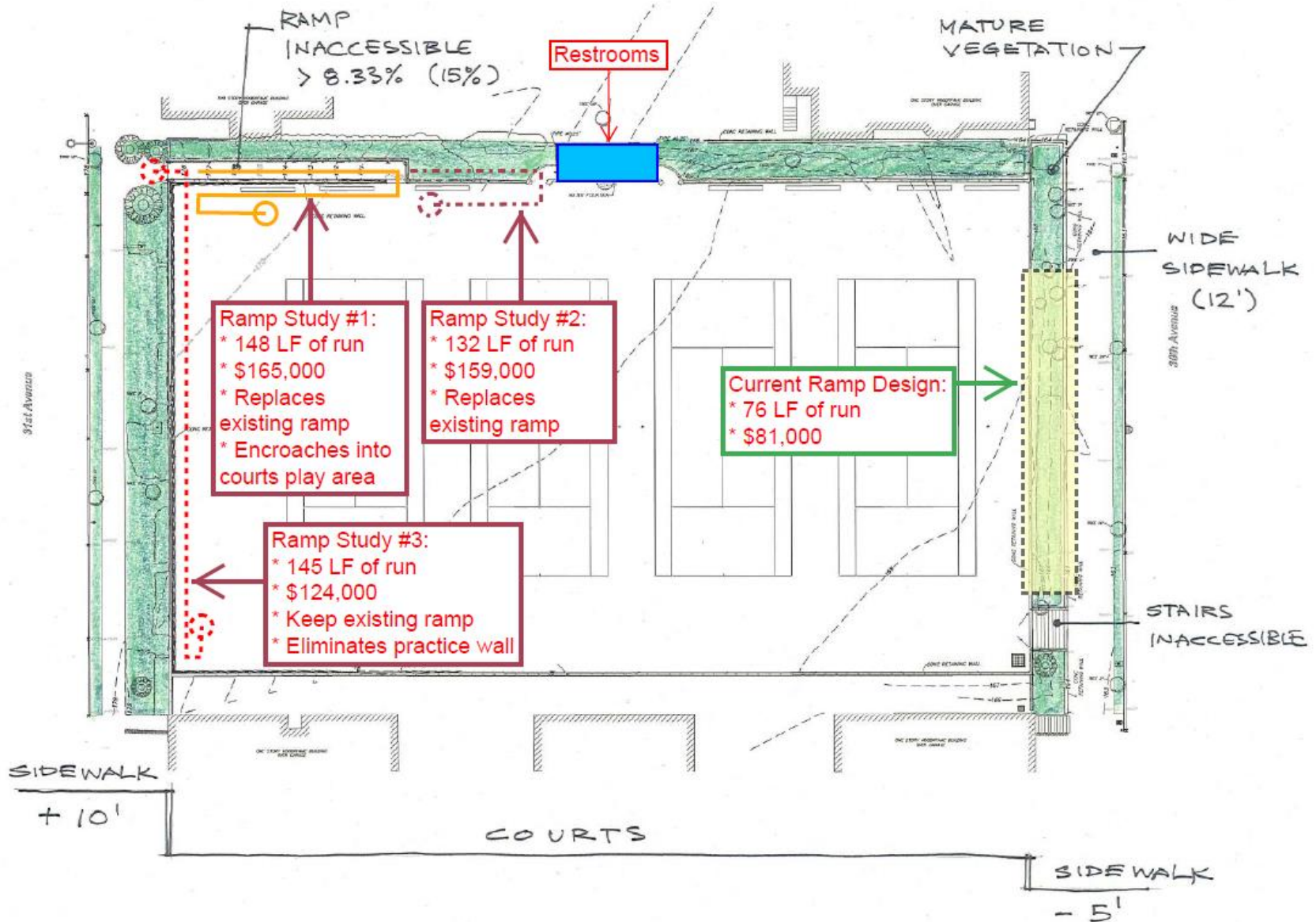
Architectural Diversity



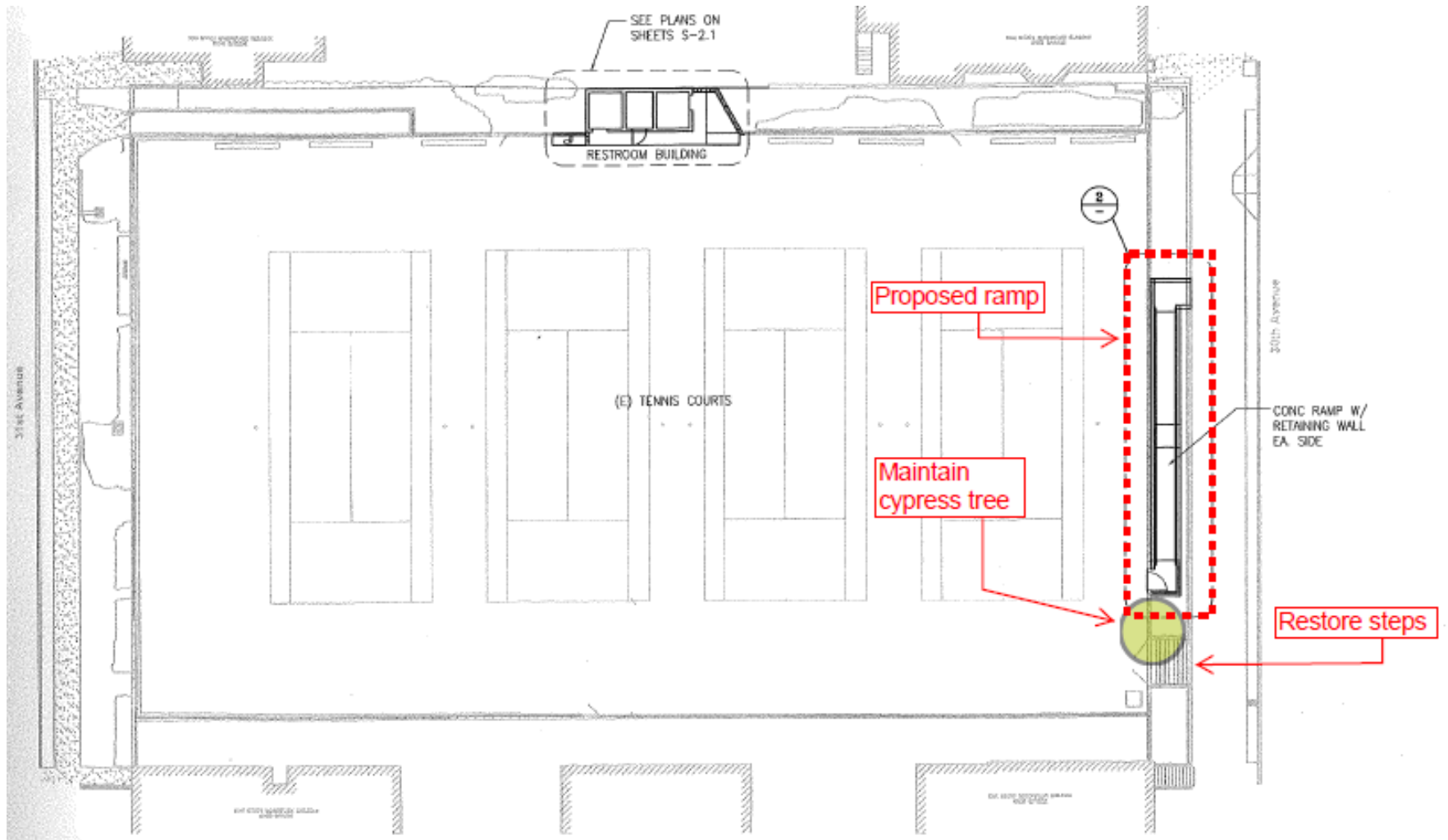
Wheelchair Ramp Site Analysis



Wheelchair Ramp Studies



Proposed Ramp Layout



Dupont Courts – 30th Ave Frontage



Dupont Courts Accessible Ramp



Plant Selections



Phormium 'Duet' (New Zealand Flax)



Salvia leucantha (Purple Sage)

TENTATIVE – Additional Street Trees

(subject to discussions with Public Works)



Before (above)
and After (right)



Thank you!