

San Francisco Arts Commission Civic Design Review

REQUEST FOR REVIEW
To be submitted to the Civic Design Review
Program Manager prior to review.

PROJECT INFORMATION

PROJECT TITLE 17th & Folsom Park DATE 02/04/13

CLIENT DEPARTMENT & DIVISION: Recreation & Park Department

PROJECT LOCATION Bound by Folsom Street, 17th Street and Shotwell Streets

NAME, TITLE AND AFFILIATION OF INDIVIDUALS PRESENTING THE PROJECT:
Mary Hobson, RPD Project Manager; Edward Chin, DPW Landscape Architect;

PROJECTED SCHEDULE

Informational presentation: September 2012 (pre-PH2)
Phase 1: March 2012
Phase 2: February 2013
Phase 3: June 2013
Construction Commencement: Nov 2013
Construction Completion: June 2014

PROJECT DELIVERY METHOD:

- Design, Bid Build (traditional)
 Fast Track
 Design-Build
 Bridging
 Other

Total Construction Cost: \$1,700,000

Approximate Structure size: 400 sq ft

REVIEW

TYPE OF REVIEW REQUESTED:

- Informational presentation
 PHASE 1: Conceptual design
 PHASE 2: Design Development
 PHASE 3: Construction Documents

DESIGN

CONCEPT: Please provide a succinct description of the design concept or philosophy and influences that inform the design.

Demolition of parking lot, soil remediation, and construction of new park. Park program includes a play area, lawn area, multi-purpose hardscaped area, demonstration garden and community garden w/ greenhouse and shed.

IS THIS PROJECT PART OF A BOND OR CAPITAL IMPROVEMENT PROGRAM? YES **NO**

If yes, when was the bond overview presented to the Committee? _____

If the bond overview has not been previously presented to the Committee, please contact the Program Manager.

CHANGES: Please briefly list the changes to the design since the last review (if applicable).

CONSTRUCTION MATERIALS: Please list the general materials proposed for construction.

General landscaping including turf, trees and native plants; paved and permeable hardscapes, and rubber safety surface; wood and steel structures; concrete retaining walls and stairs; steel/wood/composite play equipment and site furnishings.

COMMUNITY OUTREACH: Has the community been invited to participate in the Civic Design Review process? **Yes** No
It is your obligation to notify the surrounding community (by mail or email) that there is opportunity for public comment at the meeting so that the Civic Design Committee may have the benefit of their input.

FEES

2010/2011 Cost Estimates

For each Phase 1, Phase 2, and Phase 3 meeting: \$2,316

(Informational presentations are exempt)

Specially arranged consultations with staff and commissioners: \$848

Journal Entry should be paid to:

Index code: 28ADM516

Project: PAR516

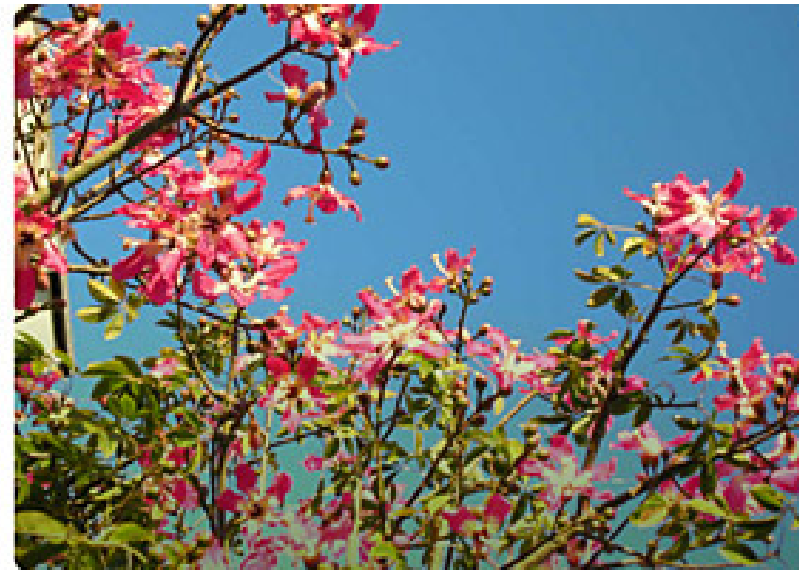
Detail: 60127

Write checks to: San Francisco Arts Commission



17th & Folsom Park

Civic Design Review
Phase 2
February 2013



Mary Hobson, Project Manager
Recreation and Park Department

Edward Chin, Landscape Architect
Andrea Alfonso, Landscape Architect
Department of Public Works

Sue Exline
Planning Department

Oscar Grande
PODER

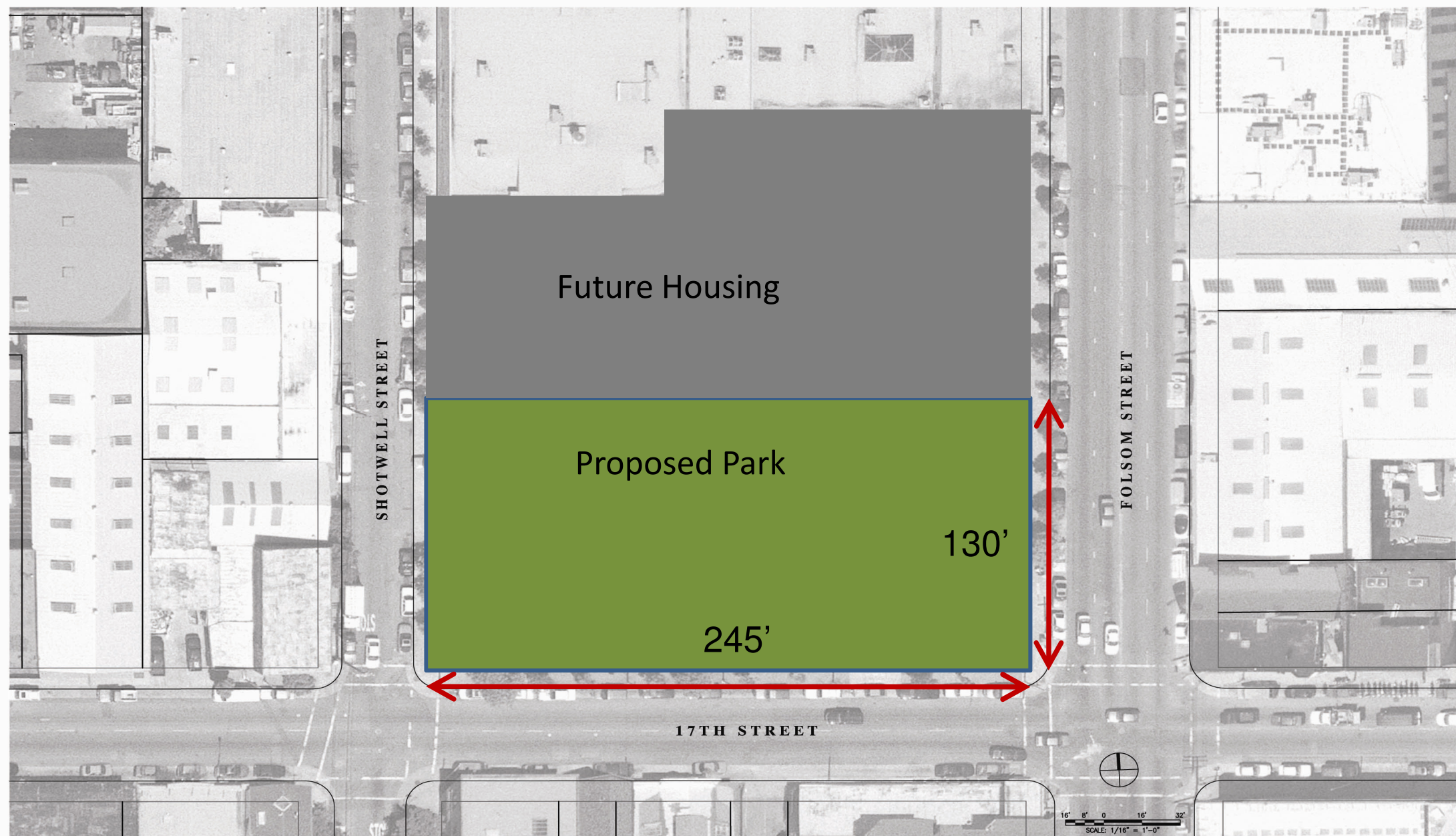




Outreach

- Partnering with People Organizing to Demand Environmental and Economic Rights (PODER)
- Community outreach began in August 2009 and continued through July, 2012.
- 15 community meetings with over 350 participants

Community Meeting 1 [on-site]	8/15/2009	52 participants
Community Meeting 2 [Spanish Speakers]	1/12/2010	12 participants
Community Meeting 3	1/23/2010	50 participants + 20 children
Community Meeting 4 [on-site]	2/6/2010	60+ participants
Community Meeting 5	3/11/2012	36+ participants
Focus Group Meetings, 9 Total	Between 12/09-1/10	5-50 participants/mtg.
Community Meeting 6	7/26/2012	50 + participants

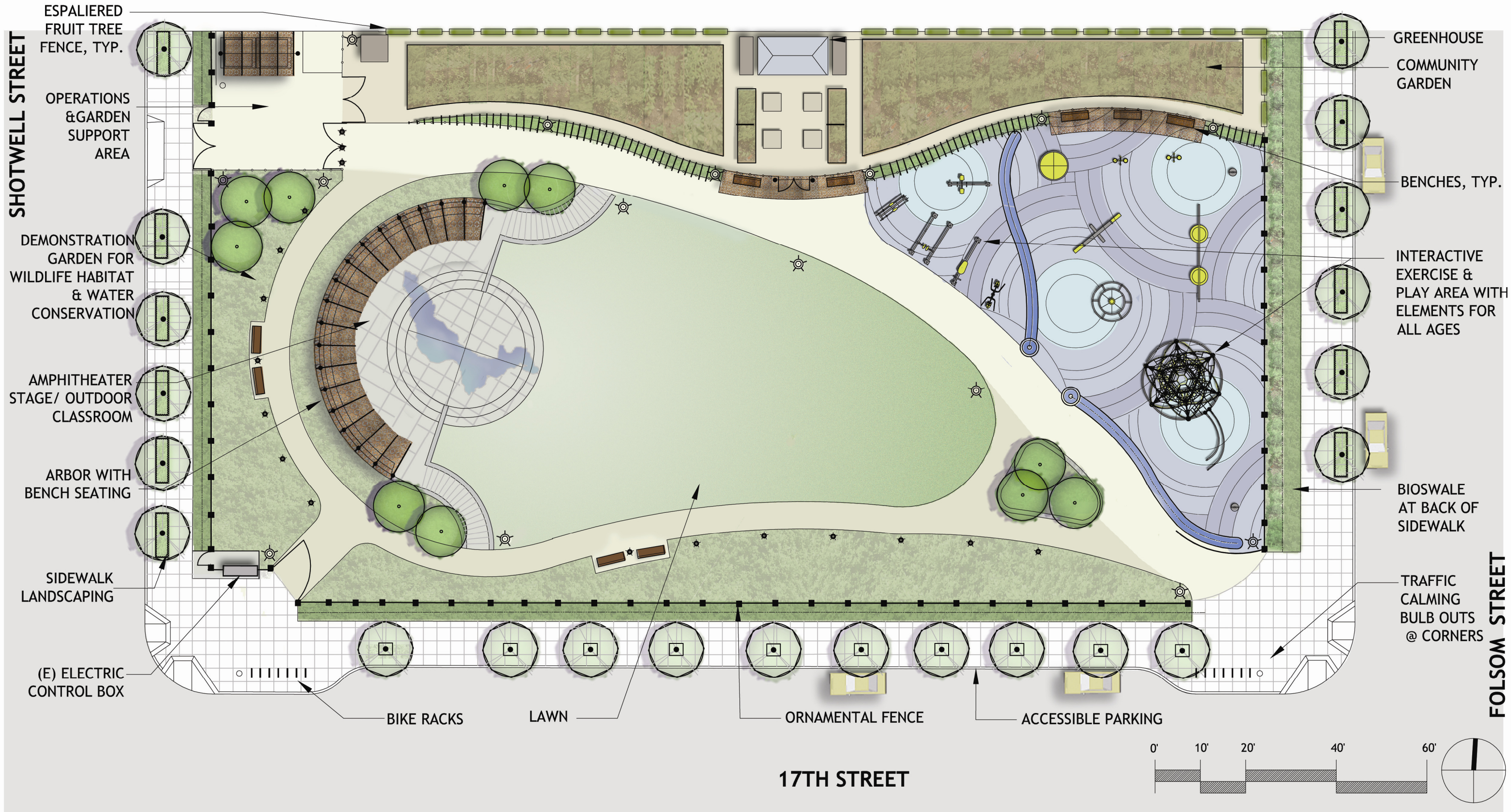


Site Zoning



SHOTWELL STREET

FOLSOM STREET



ESPALIERED
FRUIT TREE
FENCE, TYP.

OPERATIONS
& GARDEN
SUPPORT
AREA

DEMONSTRATION
GARDEN FOR
WILDLIFE HABITAT
& WATER
CONSERVATION

AMPHITHEATER
STAGE/ OUTDOOR
CLASSROOM

ARBOR WITH
BENCH SEATING

SIDEWALK
LANDSCAPING

(E) ELECTRIC
CONTROL BOX

BIKE RACKS

LAWN

ORNAMENTAL FENCE

ACCESSIBLE PARKING

17TH STREET

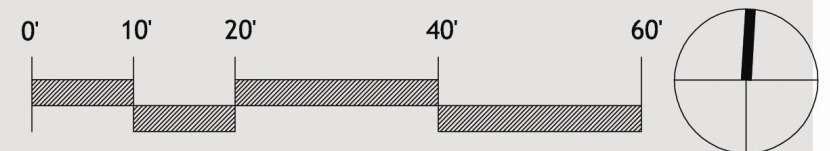
GREENHOUSE
COMMUNITY
GARDEN

BENCHES, TYP.

INTERACTIVE
EXERCISE &
PLAY AREA WITH
ELEMENTS FOR
ALL AGES

BIOSWALE
AT BACK OF
SIDEWALK

TRAFFIC
CALMING
BULB OUTS
@ CORNERS

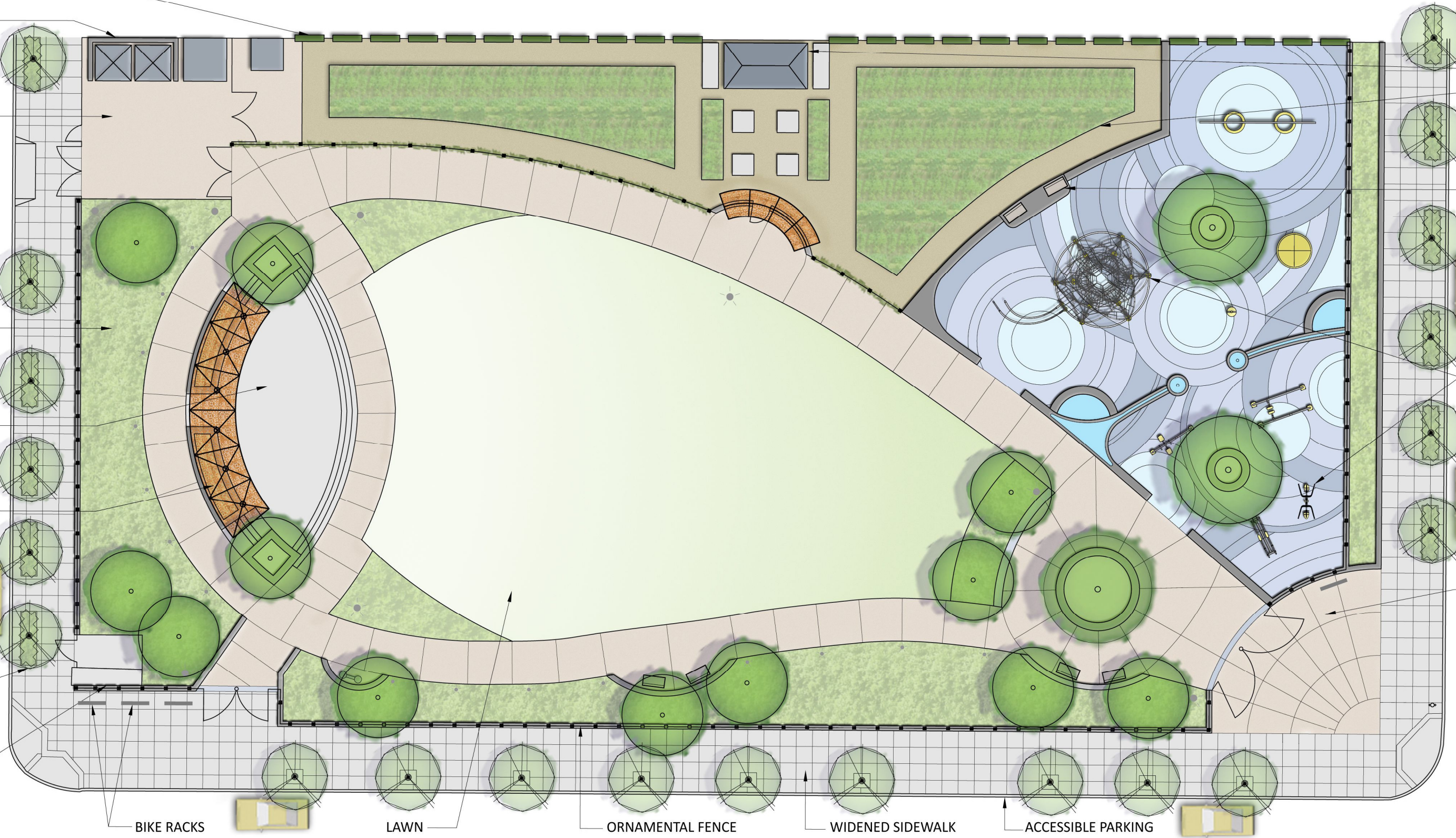


SHOTWELL STREET

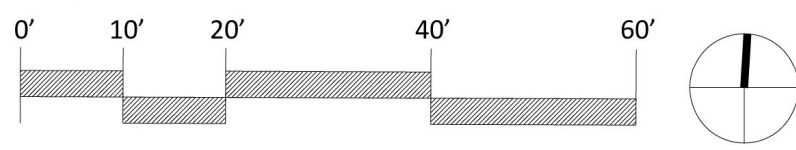
FOLSOM STREET

ESPALIERED FRUIT TREE FENCE, TYP.
 PORTABLE TOILET ENCLOSURE
 OPERATIONS & GARDEN SUPPORT AREA
 DEMONSTRATION GARDEN FOR WILDLIFE HABITAT & WATER CONSERVATION W/ BIOSWALE
 STAGE/OUTDOOR CLASSROOM
 ARBOR WITH SEATWALL SEATING
 SIDEWALK LANDSCAPING
 (E) ELECTRIC CONTROL BOX
 BIKE RACKS

GREENHOUSE
 COMMUNITY GARDEN
 BENCHES, TYP.
 INTERACTIVE EXERCISE & PLAY AREA WITH ELEMENTS FOR ALL AGES
 ENTRY PLAZA

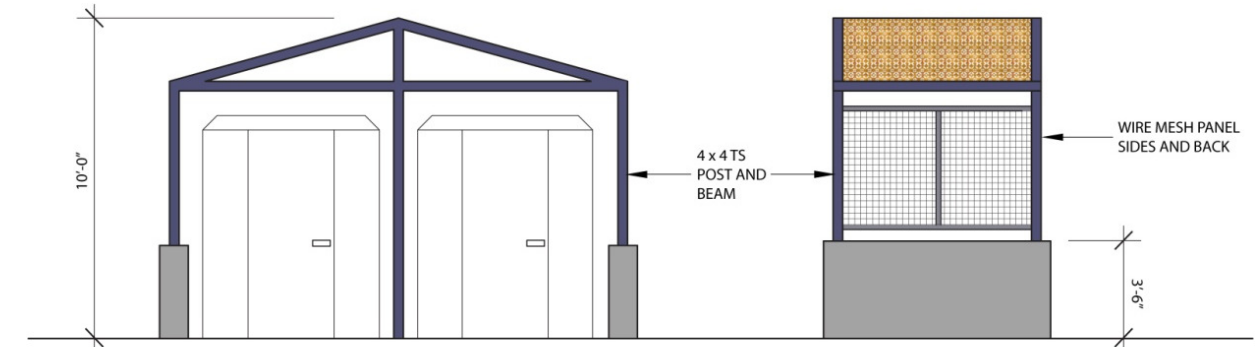
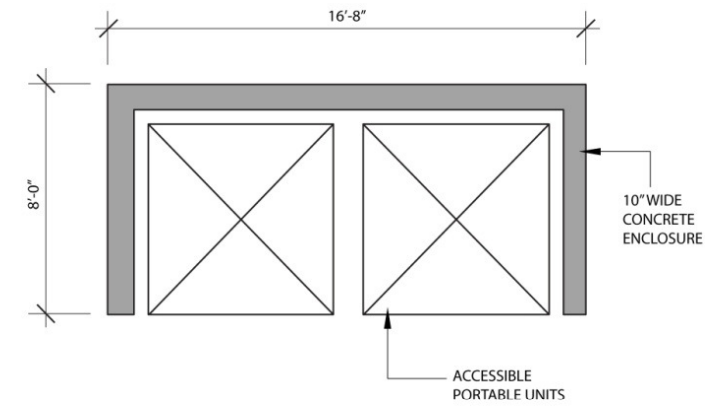


17TH STREET

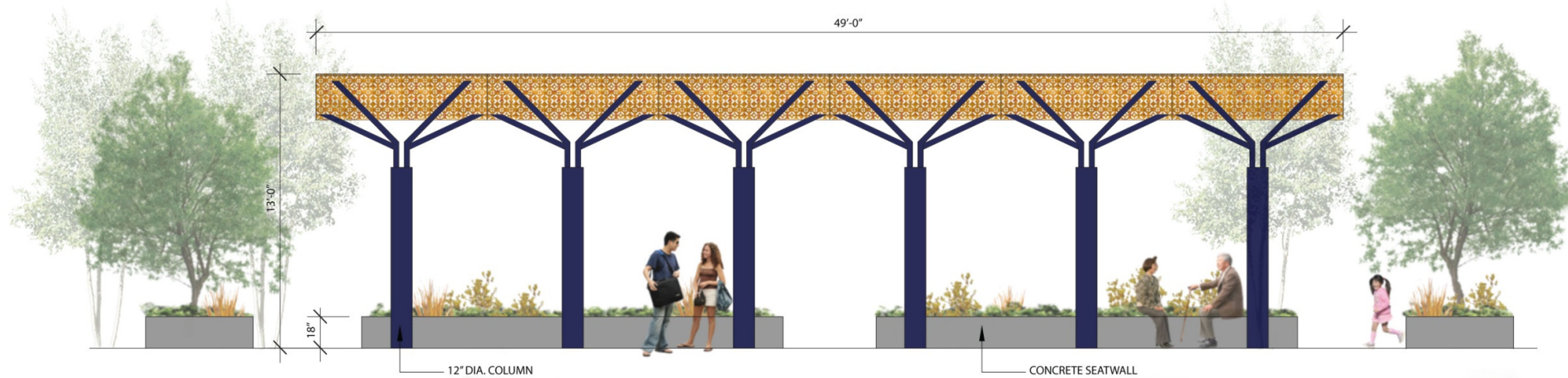




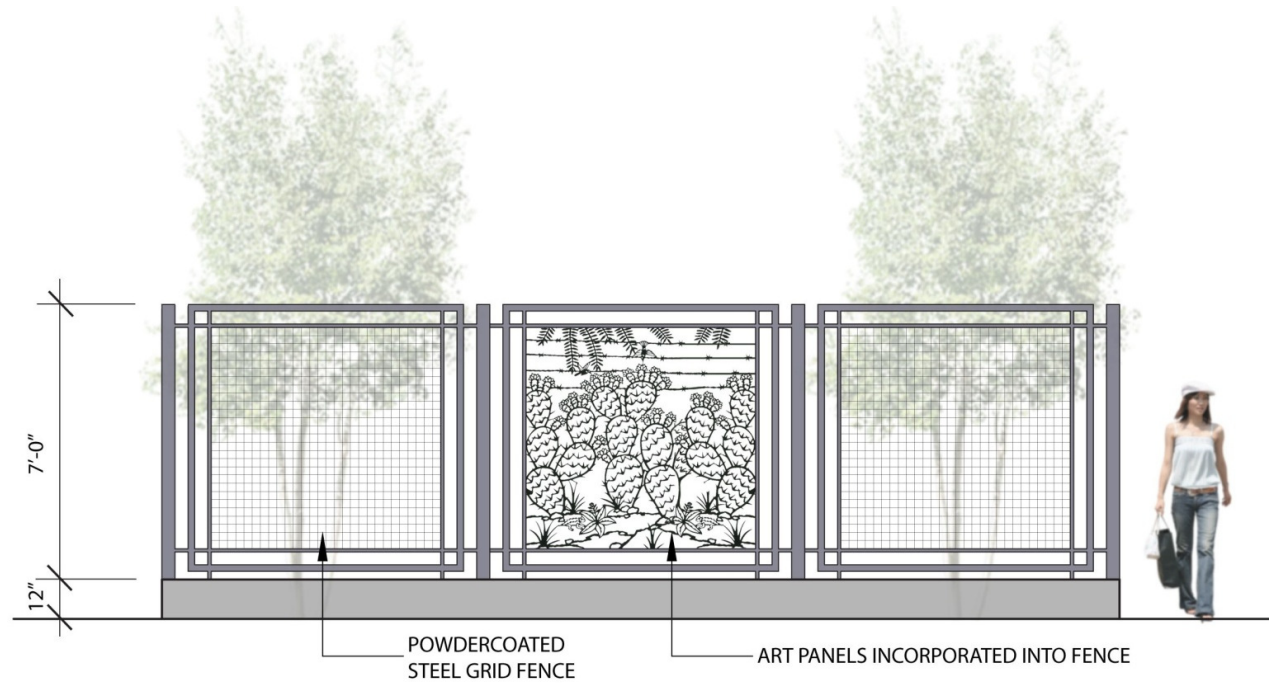
Greenhouse



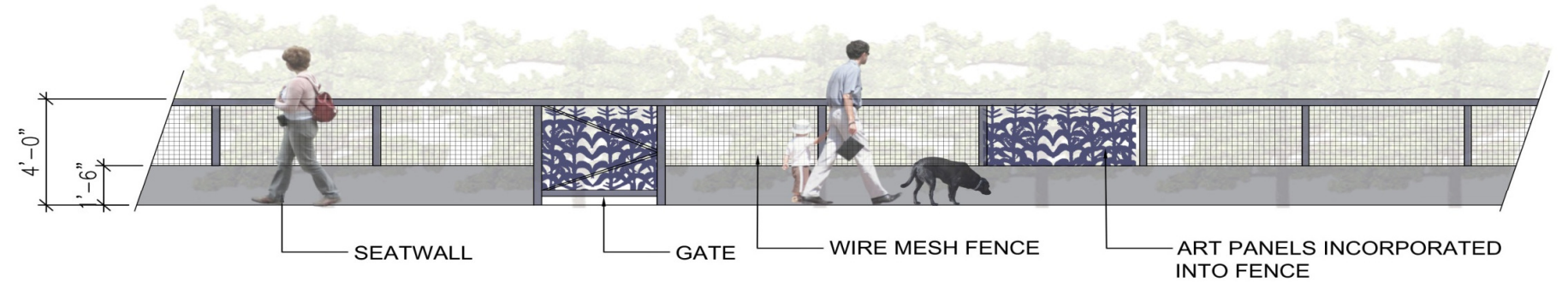
Portable Toilet Enclosure



Stage Area Elevation



Perimeter Fence



Community Garden Fence & Entry



Carousel



Double Bay Disc Swing



Spinner



Interactive Water Feature



Water Pump



Site Furnishings



Exercise Equipment



Net Climber/Rail Slide

Site Elements

COMMENTS

- Minimize convergence of major path to service yard gates.
- Relate circular pattern in play area to play equipment and tree.
- Separate two paths divided by the community garden fence with seating or planting. Consider removing fence.
- Consider additional seating, conversation nooks, cut outs to promote interaction in the park.
- Forms inside park should be curving/bulbous/amorphous. Forms outside on the frame should be rectilinear.
- Use planting or paths to distinguish spaces.
- Community garden rows should free themselves of the frame.
- Provide topography for the lawn.
- Paths should not have parallel sides.

