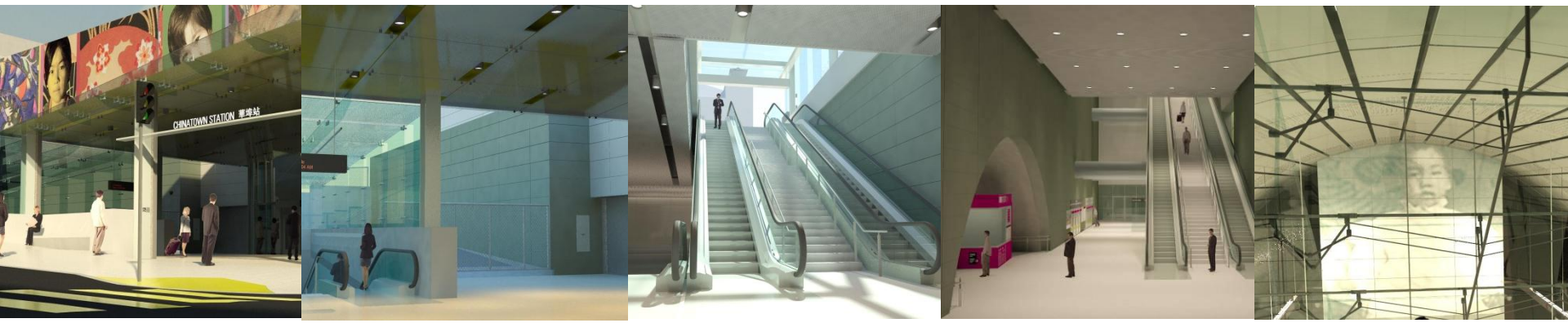


Civic Design Review Phase 3

Chinatown Station



Chinatown Station Phase 2 approval responses, developments

PHASE 2 APPROVAL CONDITIONS (MAY 25, 2011):

- SUFACE LEVEL
 - REDUCE SIZE OF COLUMNS
 - REVISE SINAGE
 - SIMPLIFY OVERALL DESIGN
 - UNIFY BENCH
 - UNIFY ART/CEILING IN MONOLITHIC SOLID VOLUME
- CONCOURSE LAYOUT TO ACCOUNT FOR CROWDED CONDITIONS
- RESOLVE AND MINIMIZE CAVERN HANDRAILS
- PROPOSE MASSING OF FUTURE DEVELOPMENT

OTHER DESIGN FEATURES UPDATED SINCE PHASE 2 APPROVAL:

- STREET TREE SPECIES
- SMOKE ENCLOSURES AT PLATFORM LEVEL

Chinatown Station updated tree species



ONE NEW STREET TREE MARKS STATION ENTRANCE

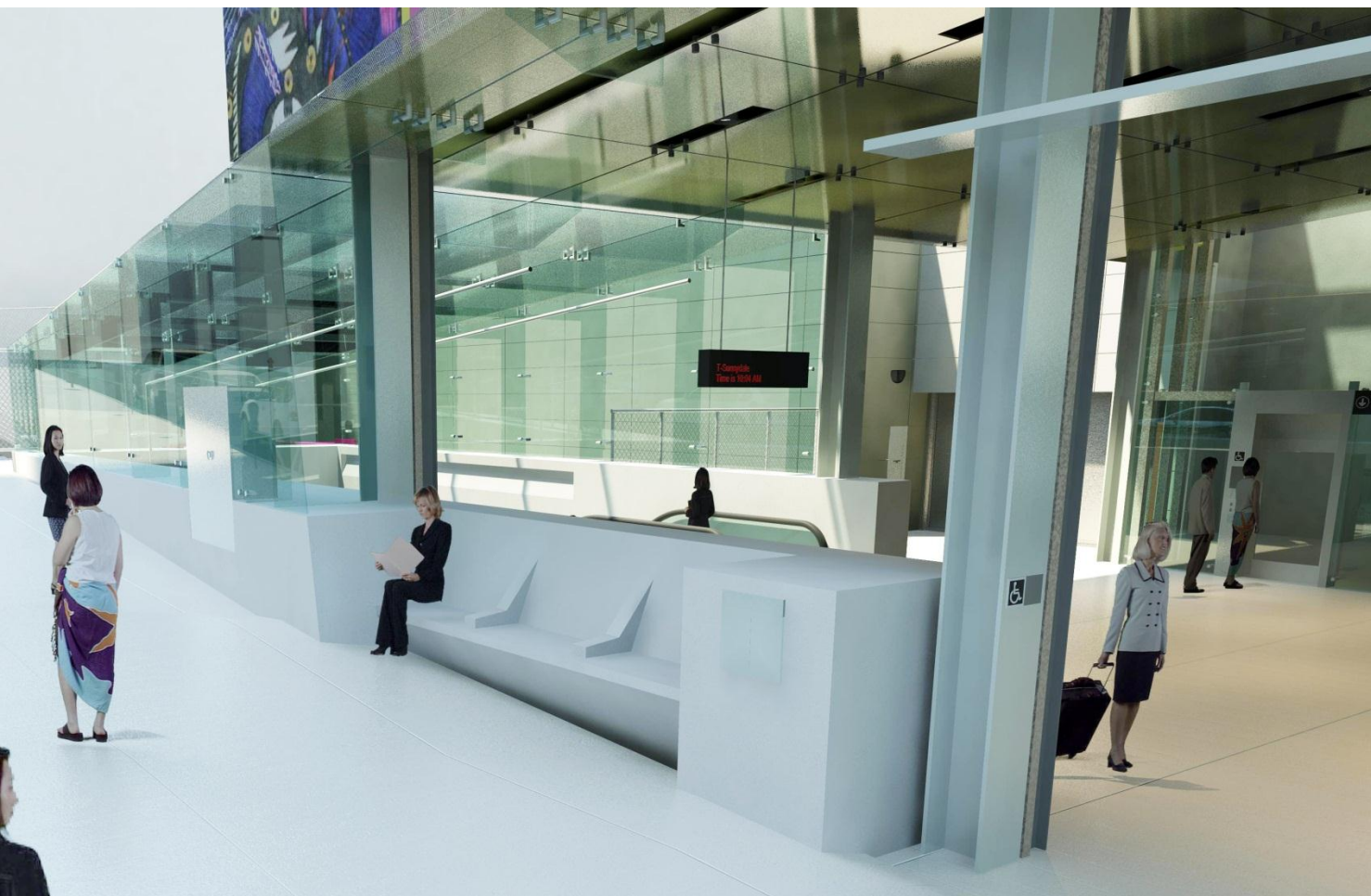
- FORMER PROPOSAL: GINGKO BILOBA
- CURRENT SELECTION: MICHELIA DOLTSOPA "SWEET MICHELIA"
 - EVERGREEN, BLOOMS IN WINTER MONTHS
 - AT MATURITY: MODERATE CANOPY, HEIGHT 15-25FT, SPREAD 15FT
 - SPECIFIED IN CD:12-14FT TREE MIN. HEIGHT, 6-7FT SPREAD MIN.



Chinatown Station entrance at surface



Chinatown Station entrance at surface



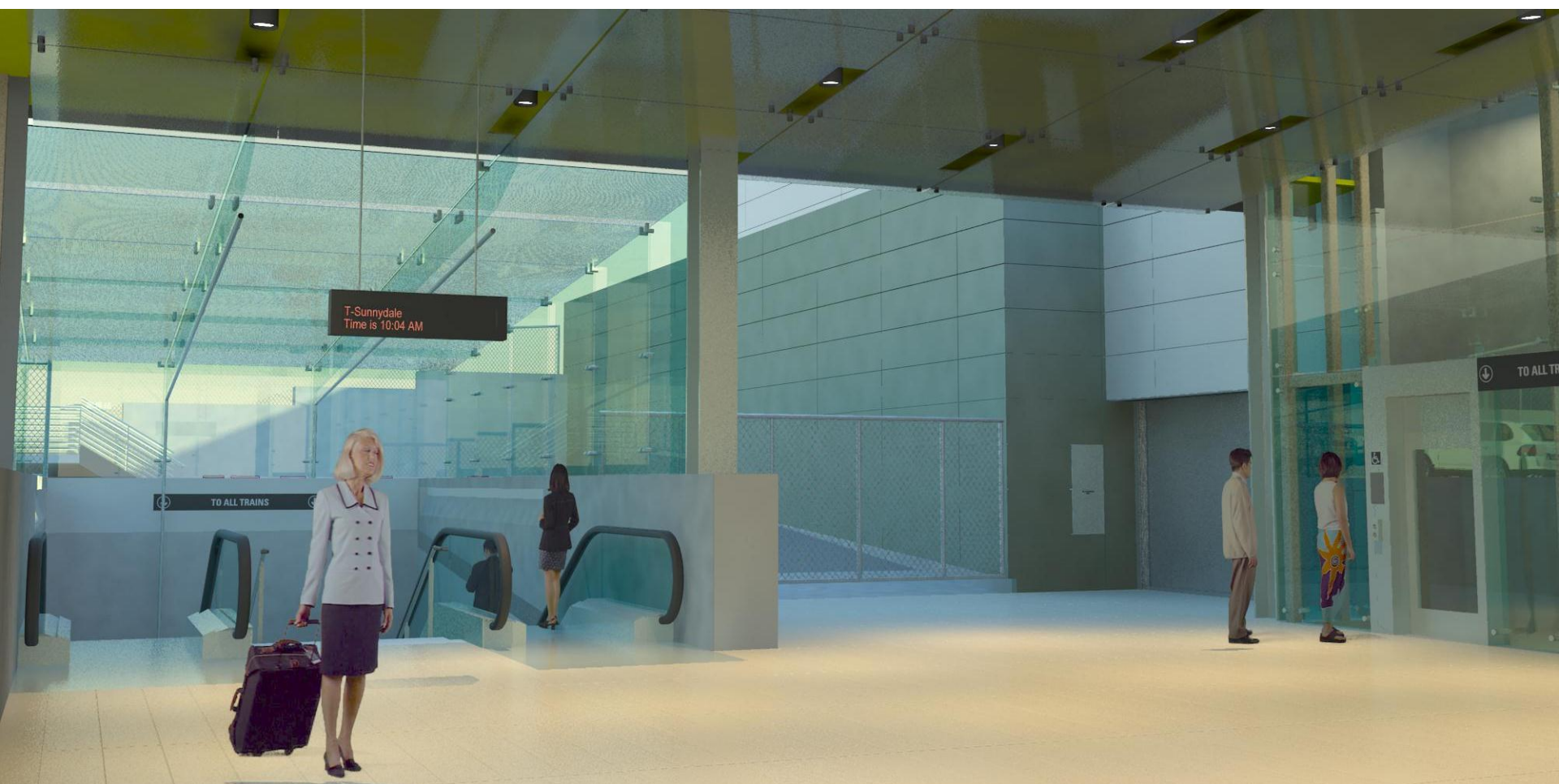
Chinatown Station entrance at surface



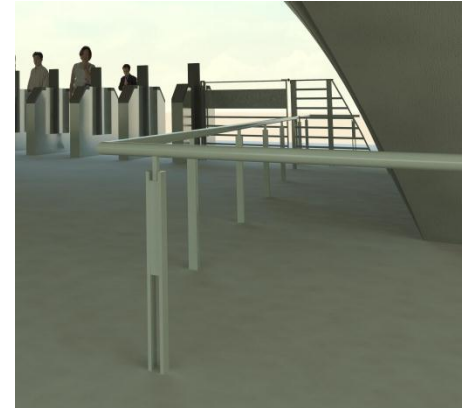
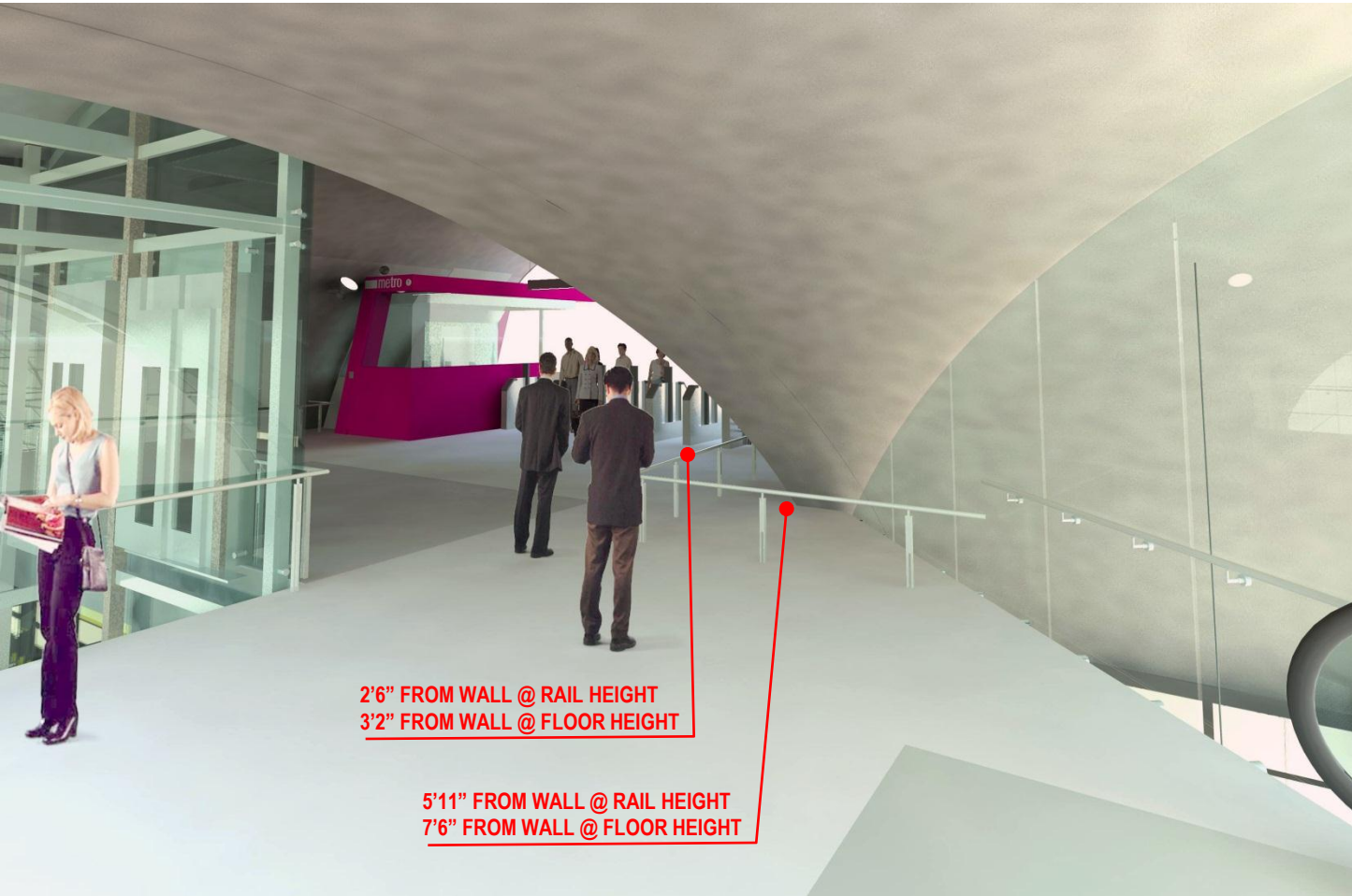
Chinatown Station entrance at surface



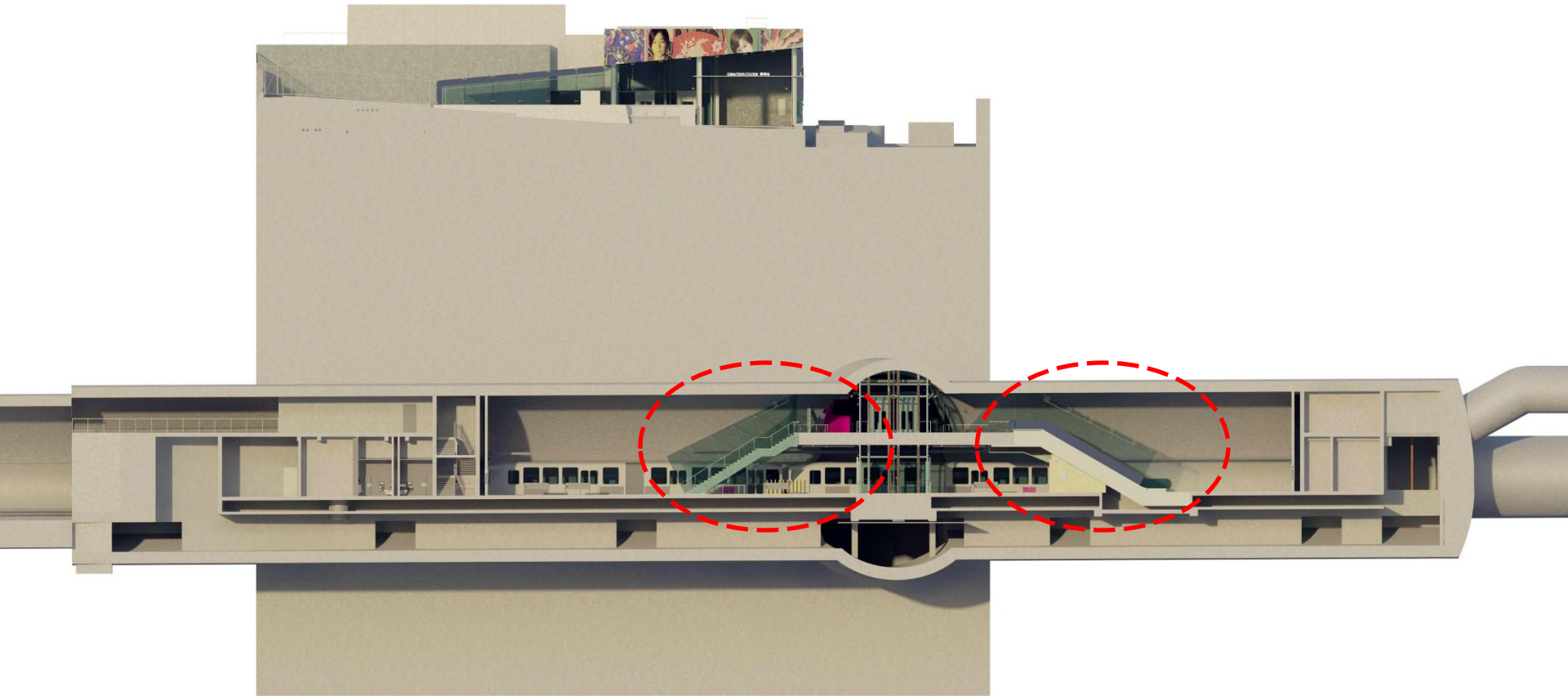
Chinatown Station entrance at surface



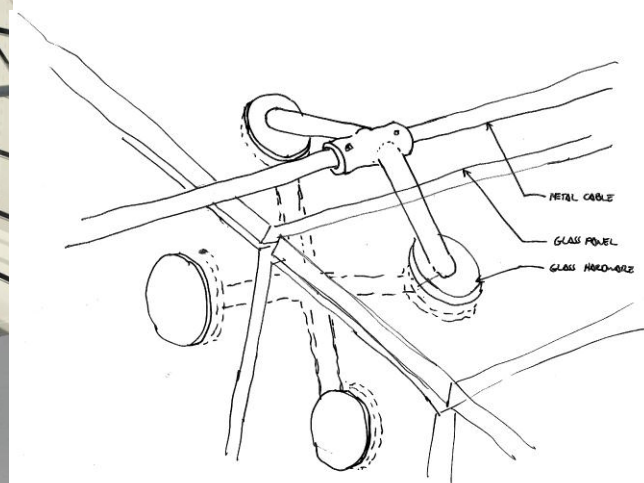
Chinatown Station concourse level paid area



Chinatown Station platform



Chinatown Station platform cavern



Chinatown Station platform cavern



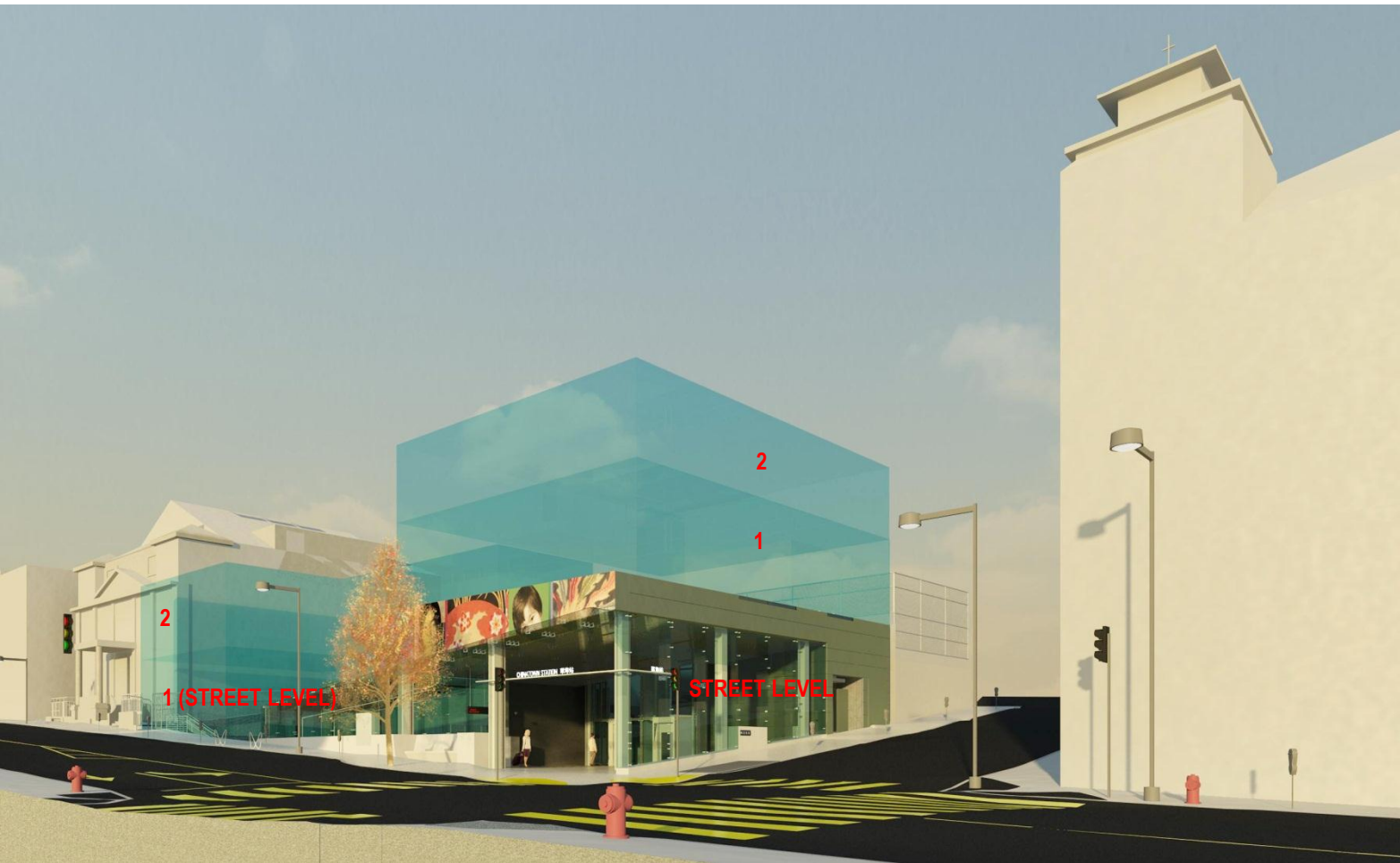
Chinatown Station platform cavern



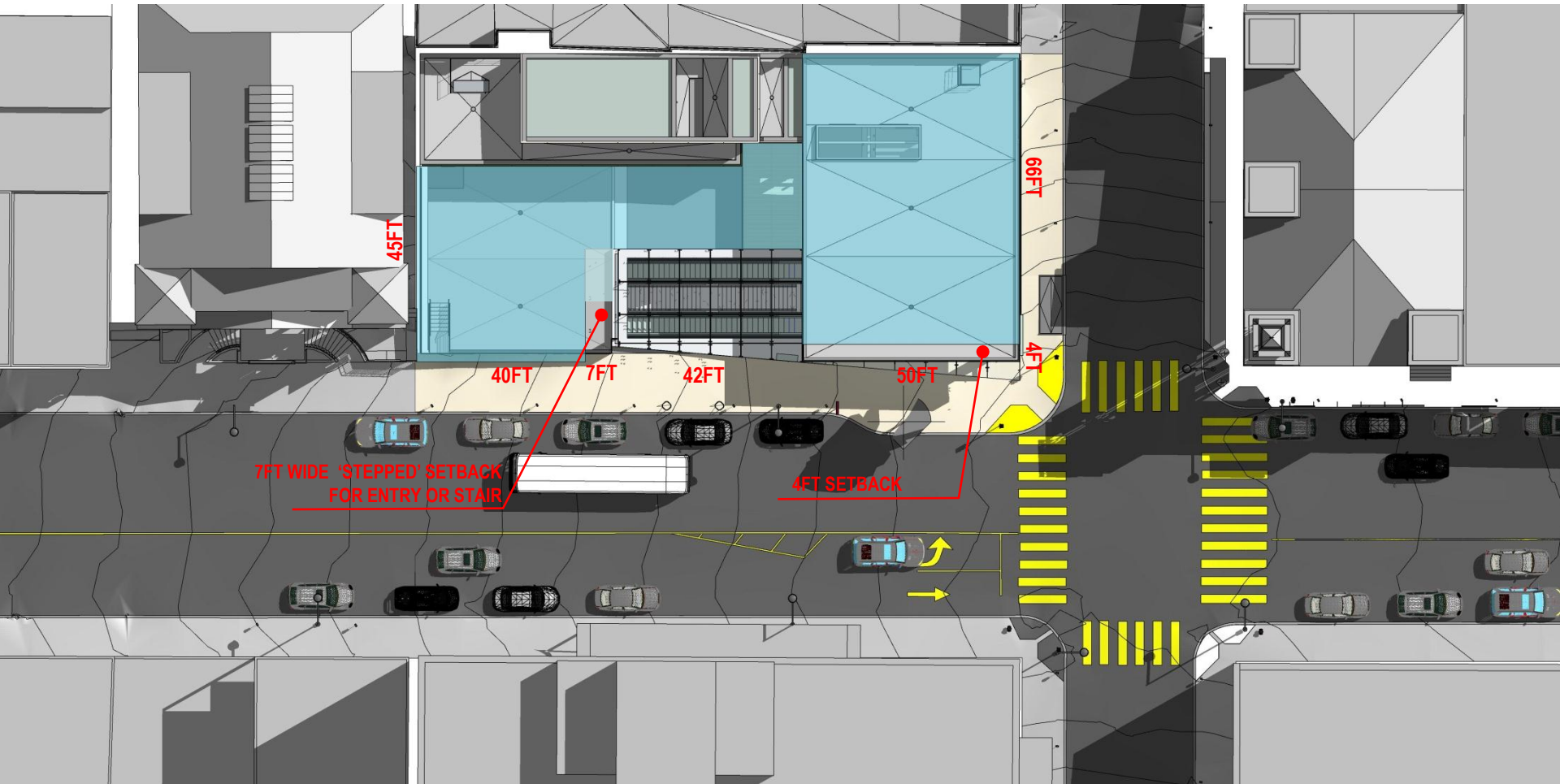
Chinatown Station platform cavern



Chinatown Station future development massing



Chinatown Station future development massing



Chinatown Station future development massing

