

DAGGETT PARK

SCHEMATIC DESIGN REVIEW MEETING JAN 23 2012



COMMUNITY PROCESS SUMMARY

DATE	EVENT	VENUE	APPROX. ATTENDANCE	MILESTONE
4.29.09	Showplace Square Open Space Plan Community	Showplace Square	75	Meeting # 1
6.16.09	Showplace Square Open Space Plan Walking Tour	Showplace Square	30	
6.24.09	Showplace Square Open Space Plan Community	Showplace Square	50	Meeting # 2
7.21.09	Showplace Square Open Space Plan Community	Showplace Square	50	Meeting # 3
9.23.09	Showplace Square Open Space Plan Community	Showplace Square	40	Meeting # 4
12.02.09	Showplace Square Open Space Plan Community	Showplace Square	25	Meeting # 5
1.28.10	Presentation on the Results of the Showplace Square Open Space Plan	Planning Commission	50+ Publicly Televised	Acceptance of the Plan
2.25.10	Presentation on the Results of the Showplace Square Open Space Plan	Board of Supervisors Government Audit & Oversight Committee	50+ Publicly Televised	
7.8.10	Presentation on the Implementation of the Showplace Square Open Space Plan	Planning Commission	50+ Publicly Televised	
5.16.11	Prioritization of Expenditure of Impact Fees in Showplace Square, Part 1	Eastern Neighborhoods Citizens Advisory Committee	20	
7.18.11	Prioritization of Expenditure of Impact Fees in Showplace Square, Part 2	Eastern Neighborhoods Citizens Advisory Committee	15	Recommendation to allocate impact fees to the Daggett Park Project
9.7.11	Designing Daggett Park	Community Meeting	15	

OPEN SPACE CONTEXT



AERIAL- EXISTING SITE



16TH STREET



EXISTING SITE & SURROUNDING CONTEXT



EXISTING SITE & SURROUNDING CONTEXT



ILLUSTRATIVE CONTEXT PLAN



SCALE COMPARISON



SOUTH PARK

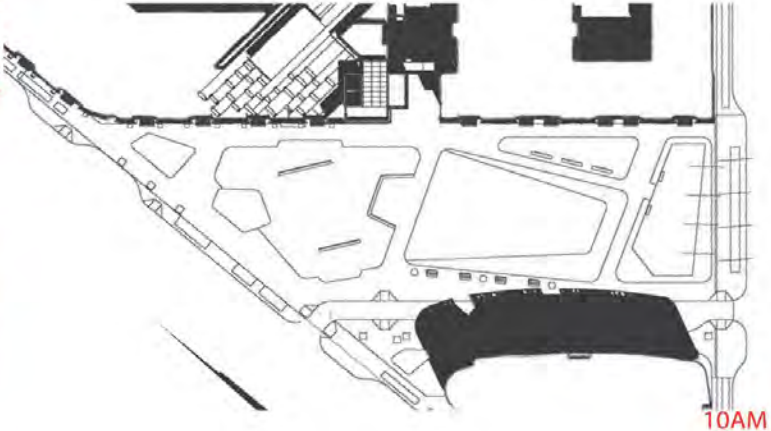


PATRICIA'S GREEN (HAYES VALLEY)

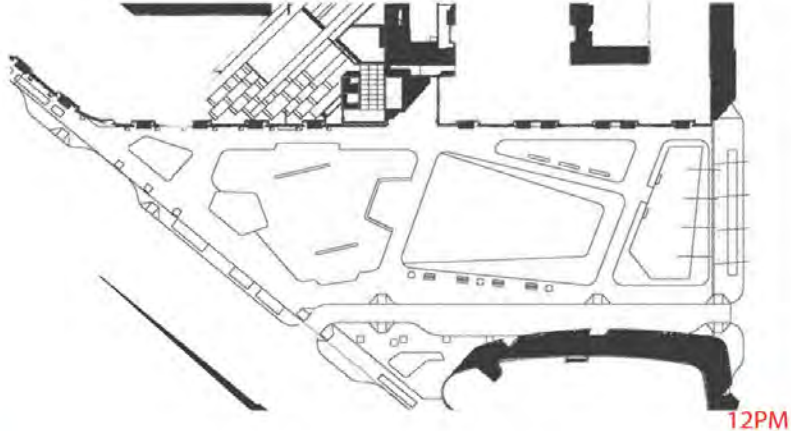


SOLAR ANALYSIS

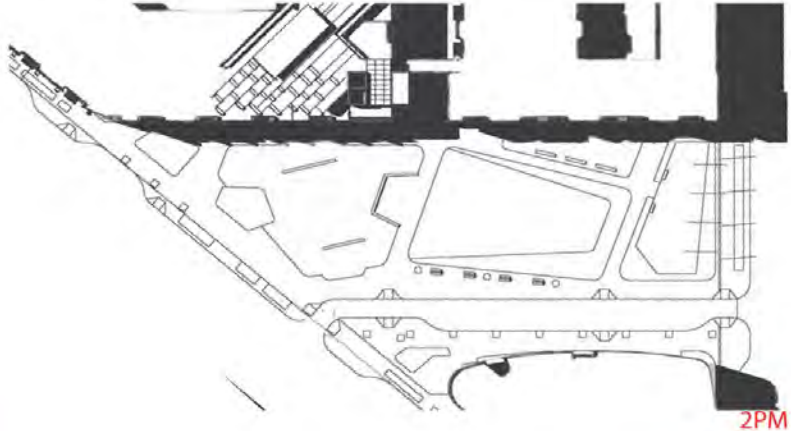
SUMMER SOLSTICE
june 20



10AM

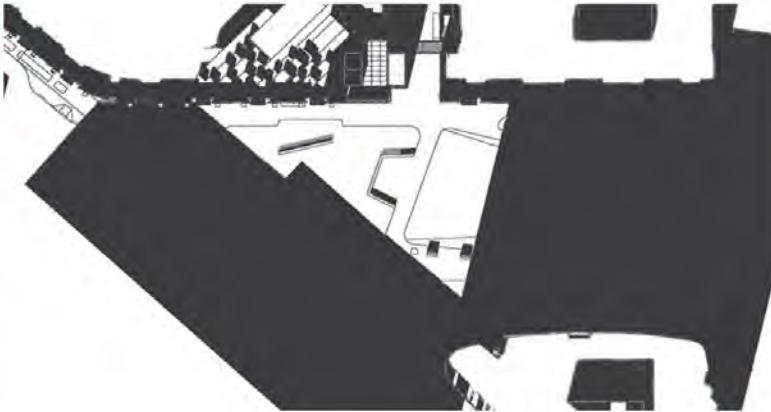


12PM

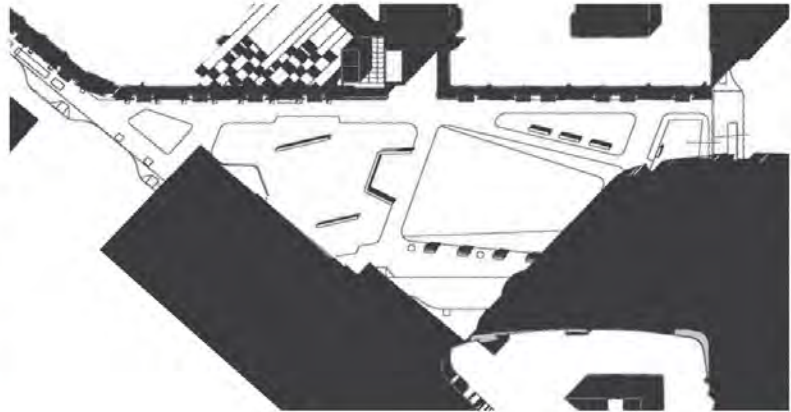


2PM

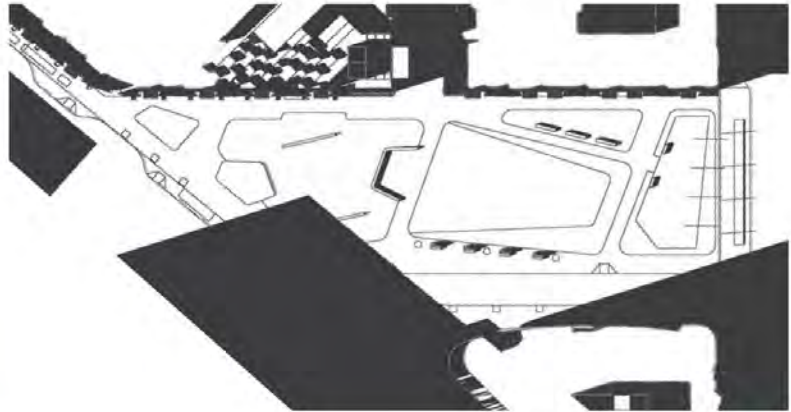
WINTER SOLSTICE
dec 21



10AM

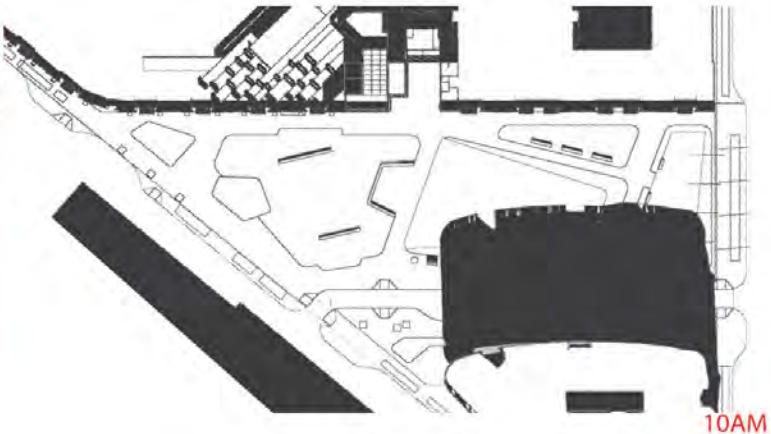


12PM

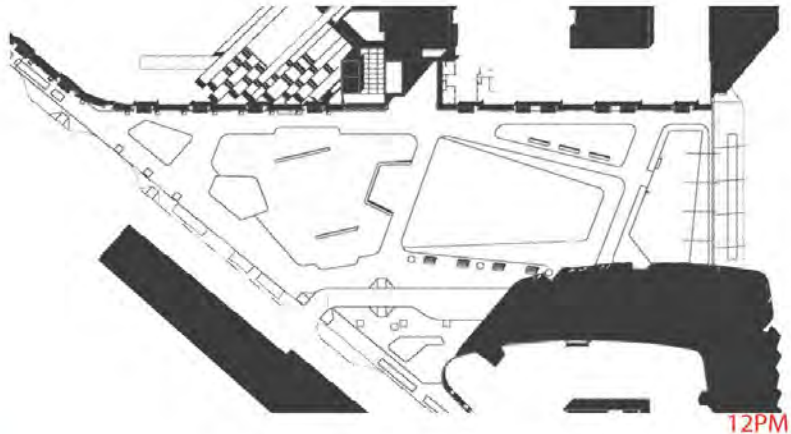


2PM

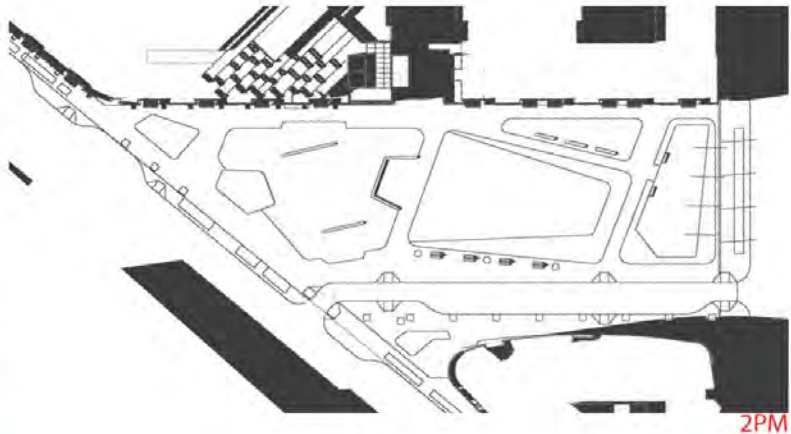
SPRING EQUINOX
march 20



10AM



12PM

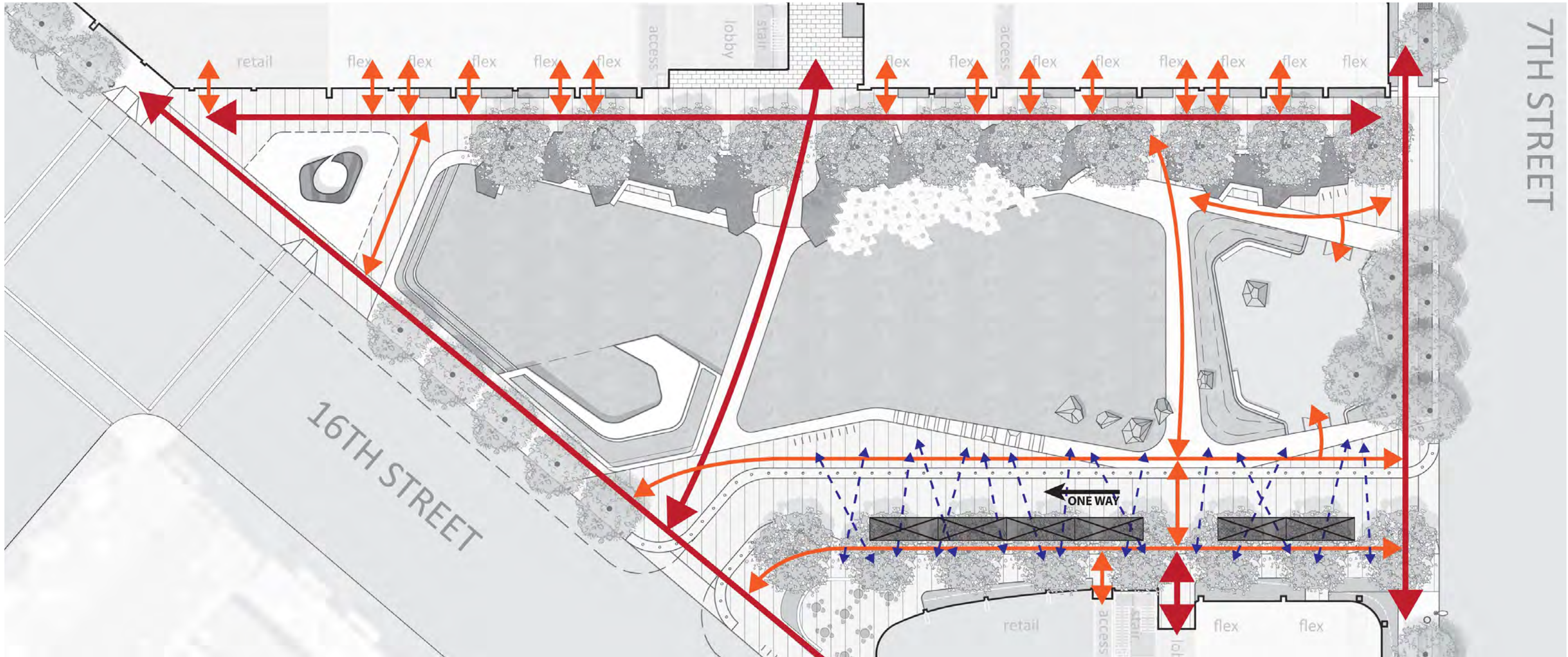


2PM

ADJACENT BUILDING USES



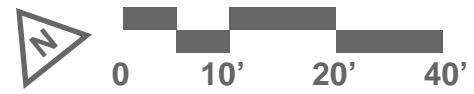
CIRCULATION



SCHEMATIC PLAN



- ① Lawn (Flexible Open Space)
- ② Tilted Lawn (C.I.P. Concrete)
- ③ "Penta-Step" Landscape Feature (Precast Conc. & Wood)
- ④ Dog Run (Synthetic Turf)
- ⑤ Sculptural Seating Elements (Material TBD)
- ⑥ Garden Edge (Mixed Native Planting/Butterfly Garden)
- ⑦ Built-In Seating (Concrete, wood and steel, with back & arm rests)
- ⑧ Wave Bench (Precast concrete)
- ⑨ Gateway Art Feature (Arts Commission Project)
- ⑩ One-Way Drive Lane (12' width, flush w/ park)
- ⑪ Detectable Warning
- ⑫ Bollards @ +/- 4' O.C.
- ⑬ (6) Parallel Parking Spaces
- ⑭ Bike Parking
- ⑮ Informal Community Stage
- ⑯ Lawn Steps (6"x24")
- ⑰ Cafe Seating Area
- ⑱ The Park Counter & Stools (Material TBD)
- ⑲ C.I.P. Integral Color Conc. w/ Water Washed Finish or Unit Pavers, TBD
- ⑳ San Francisco Standard Park Entry Sign
- ㉑ 30" Conc. Wall w/42" Stainless Steel Picket Fence
- ㉒ C.I.P. Integral Color Conc. w/Sandblast Finish
- ㉓ Driveway Curb Cut



*Note: The site is essentially flat and all paths within the Park will be accessible.

AERIAL FROM 16TH STREET



DAGGETT PARK - ARCHSTONE POTRERO
CIVIC DESIGN REVIEW - PHASE 1 SCHEMATIC DESIGN - JAN 23 2012

CMG
ARCHSTONE
CONGER MOSS GULLARD
500 THIRD STREET SUITE 215
SAN FRANCISCO, CA 94107
TELEPHONE: 415/495-3070
FACSIMILE: 415/495-3080

VIEW FROM 16TH STREET



DAGGETT PARK - ARCHSTONE POTRERO
CIVIC DESIGN REVIEW - PHASE 1 SCHEMATIC DESIGN - JAN 23 2012

CMG
ARCHSTONE
CONGER MOSS GULLARD
500 THIRD STREET SUITE 215
SAN FRANCISCO, CA 94107
TELEPHONE: 415/495-3070
FACSIMILE: 415/495-3080

VIEW FROM DRIVE AISLE



VIEW FROM TILTED LAWN



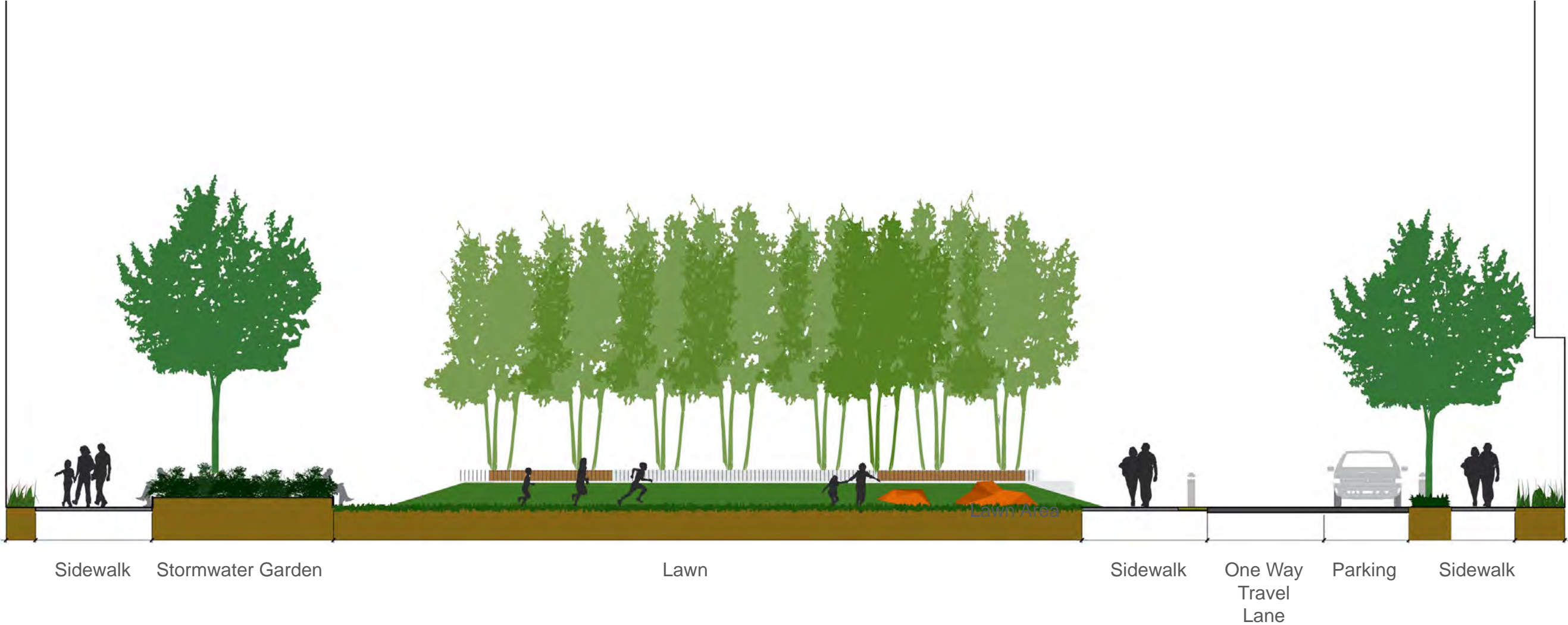
DAGGETT PARK - ARCHSTONE POTRERO
CIVIC DESIGN REVIEW - PHASE 1 SCHEMATIC DESIGN - JAN 23 2012

CMG
ARCHSTONE
CONGER MOSS GULLARD
500 THIRD STREET SUITE 215
SAN FRANCISCO, CA 94107
TELEPHONE: 415/495-3070
FACSIMILE: 415/495-3080

SITE SECTIONS



SITE SECTIONS



VIEW FROM MISSOURI STREET



VIEW FROM 16TH STREET AT GATEWAY ART FEATURE



VIEW AT CAFE CORNER @ 16TH STREET



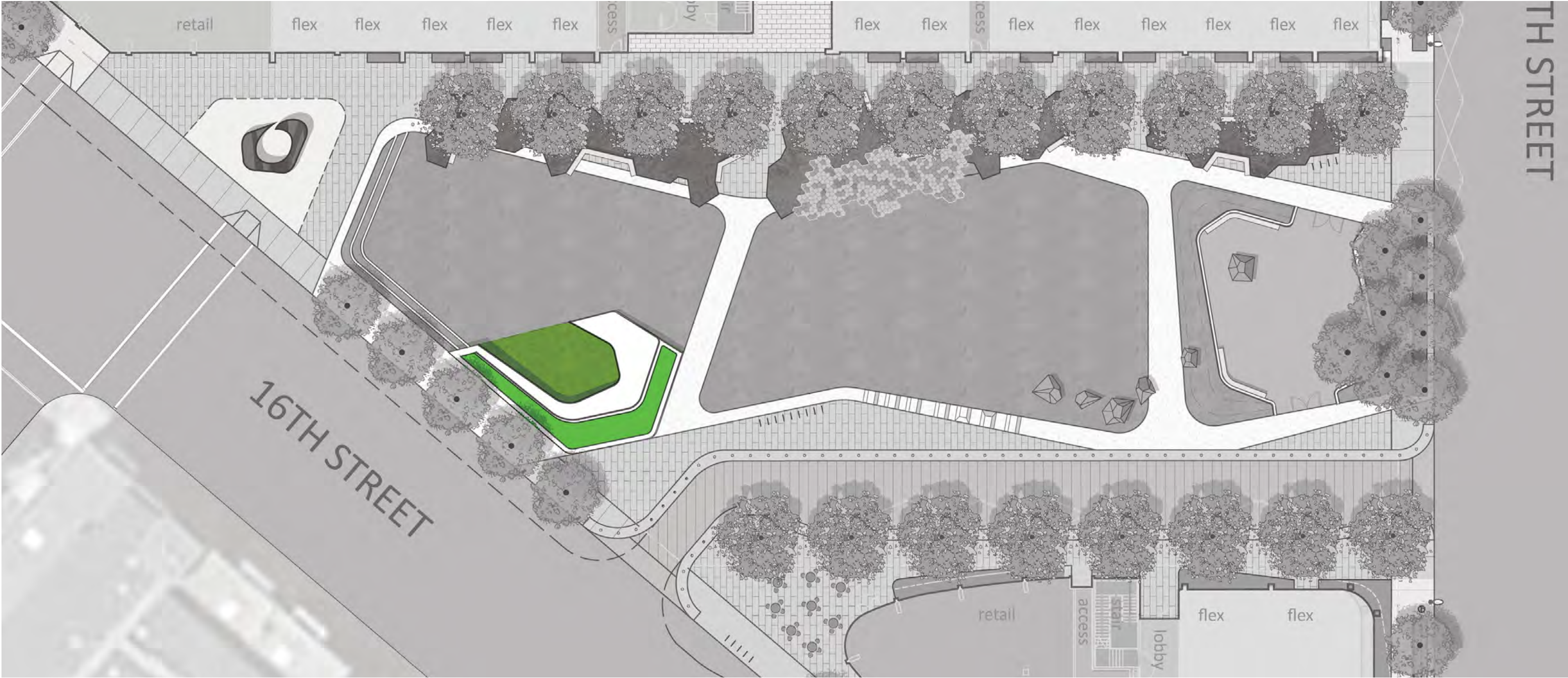
DAGGETT PARK - ARCHSTONE POTRERO
CIVIC DESIGN REVIEW - PHASE 1 SCHEMATIC DESIGN - JAN 23 2012

CMG
ARCHSTONE
CONGER MOSS GULLARD
500 THIRD STREET SUITE 215
SAN FRANCISCO, CA 94107
TELEPHONE: 415/495-3070
FACSIMILE: 415/495-3080

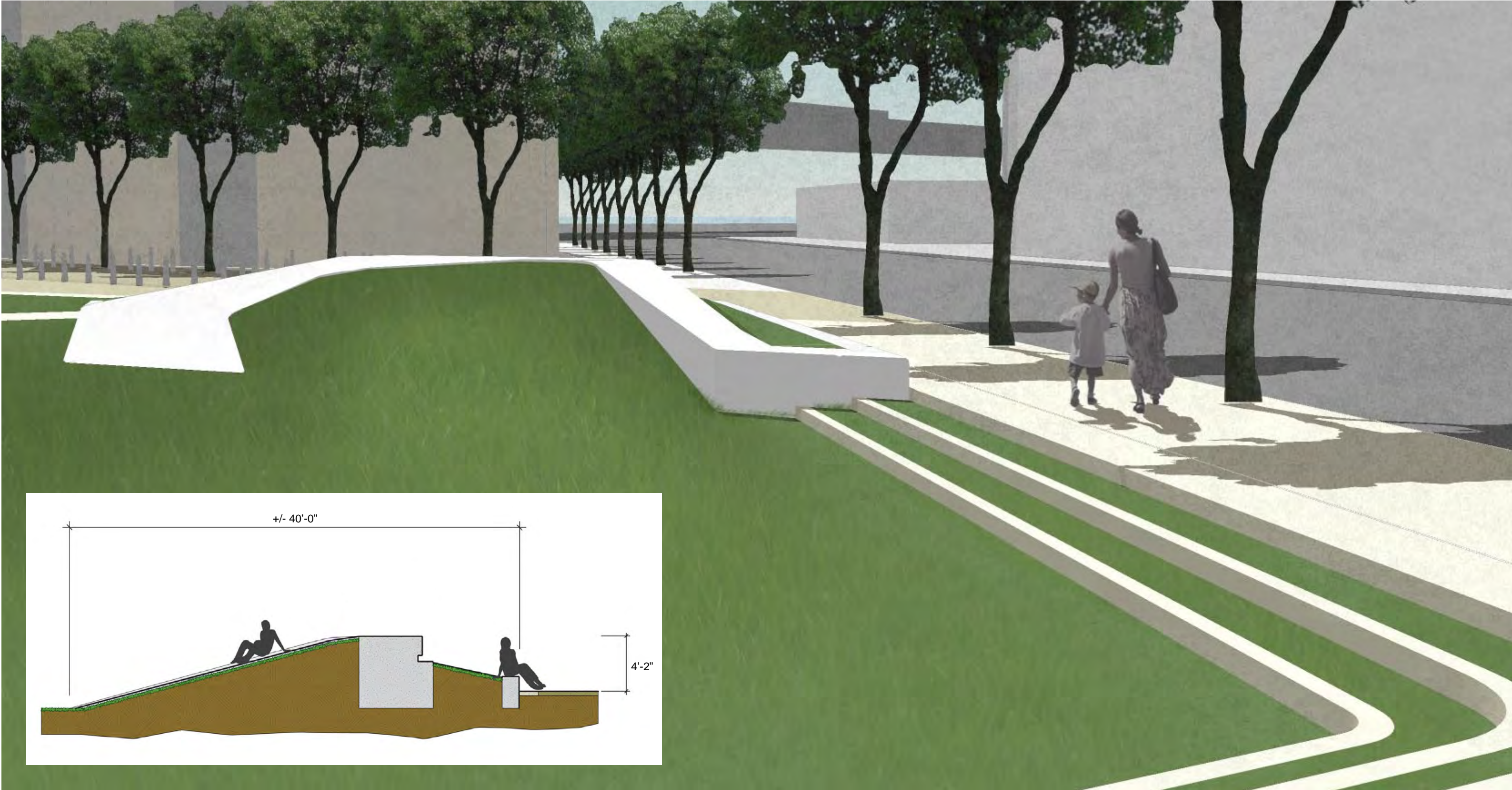
VIEW AT N.E. 7TH STREET ENTRY



TILTED LAWN FEATURE



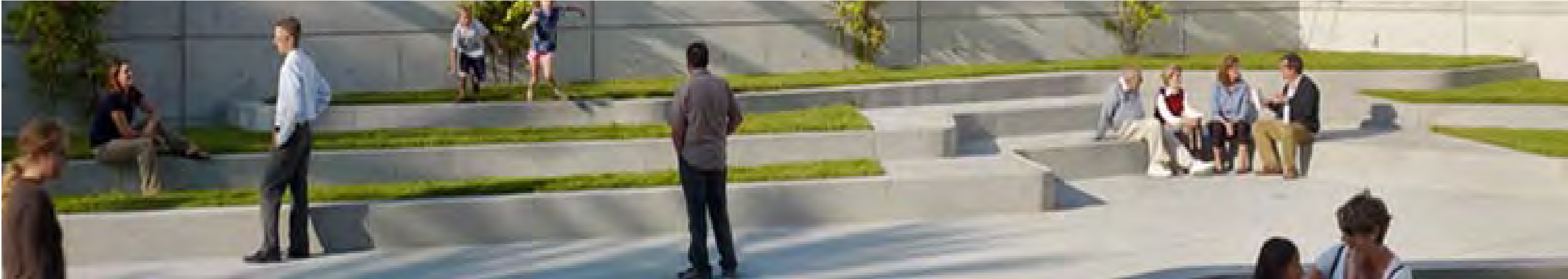
TILTED LAWN FEATURE



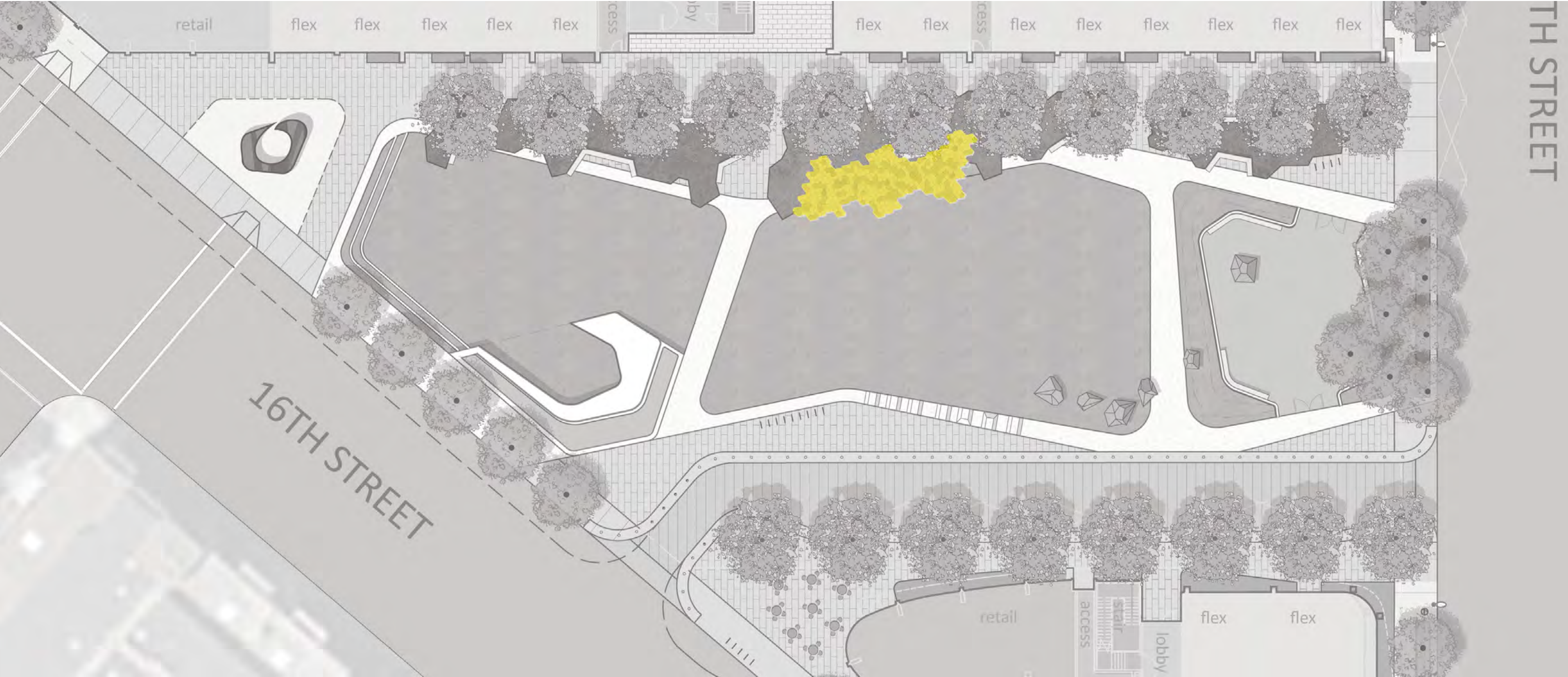
TILTED LAWN FEATURE



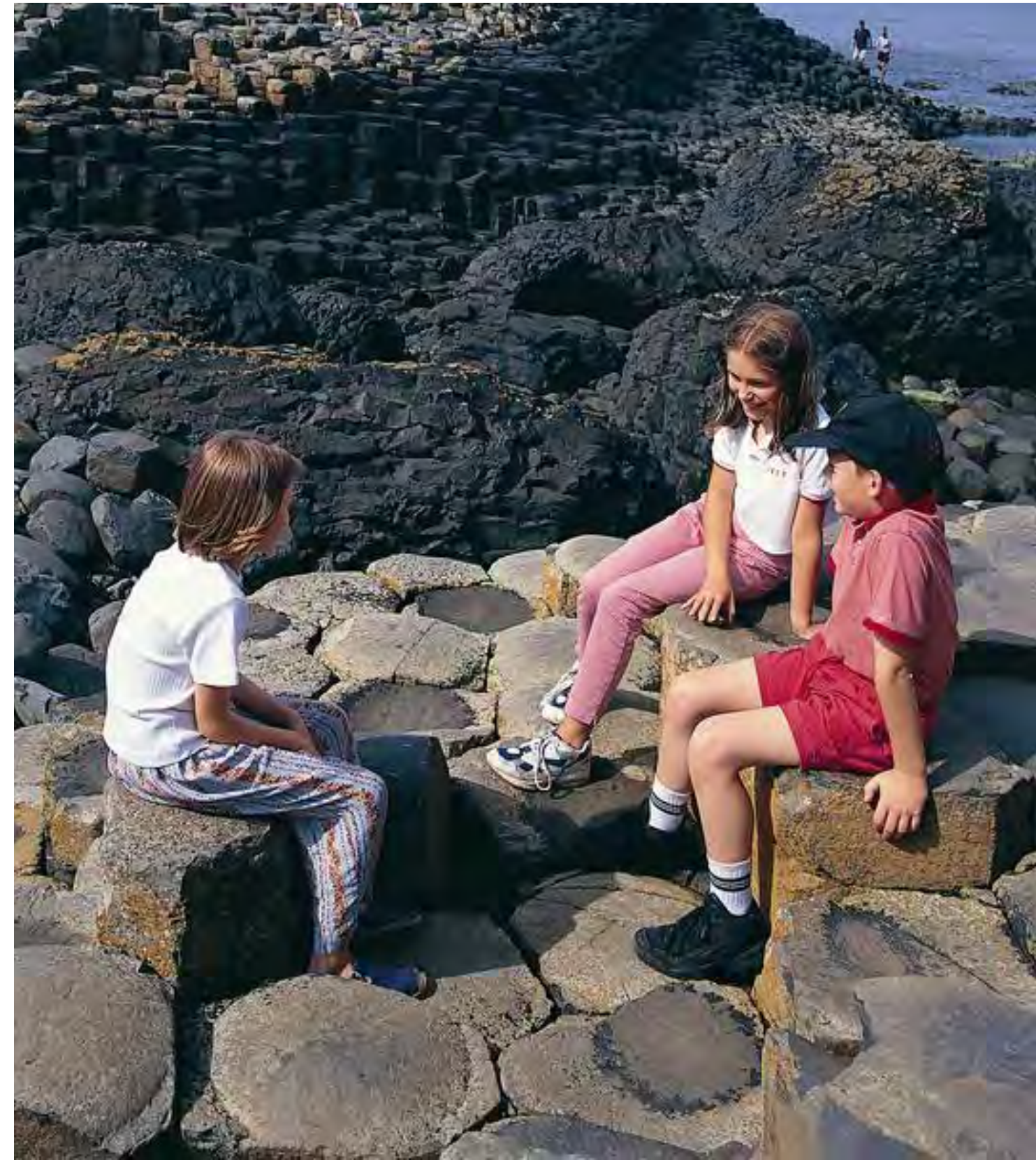
TILTED LAWN FEATURE



“PENTA-STEP” LANDSCAPE FEATURE



“PENTA-STEP” LANDSCAPE FEATURE



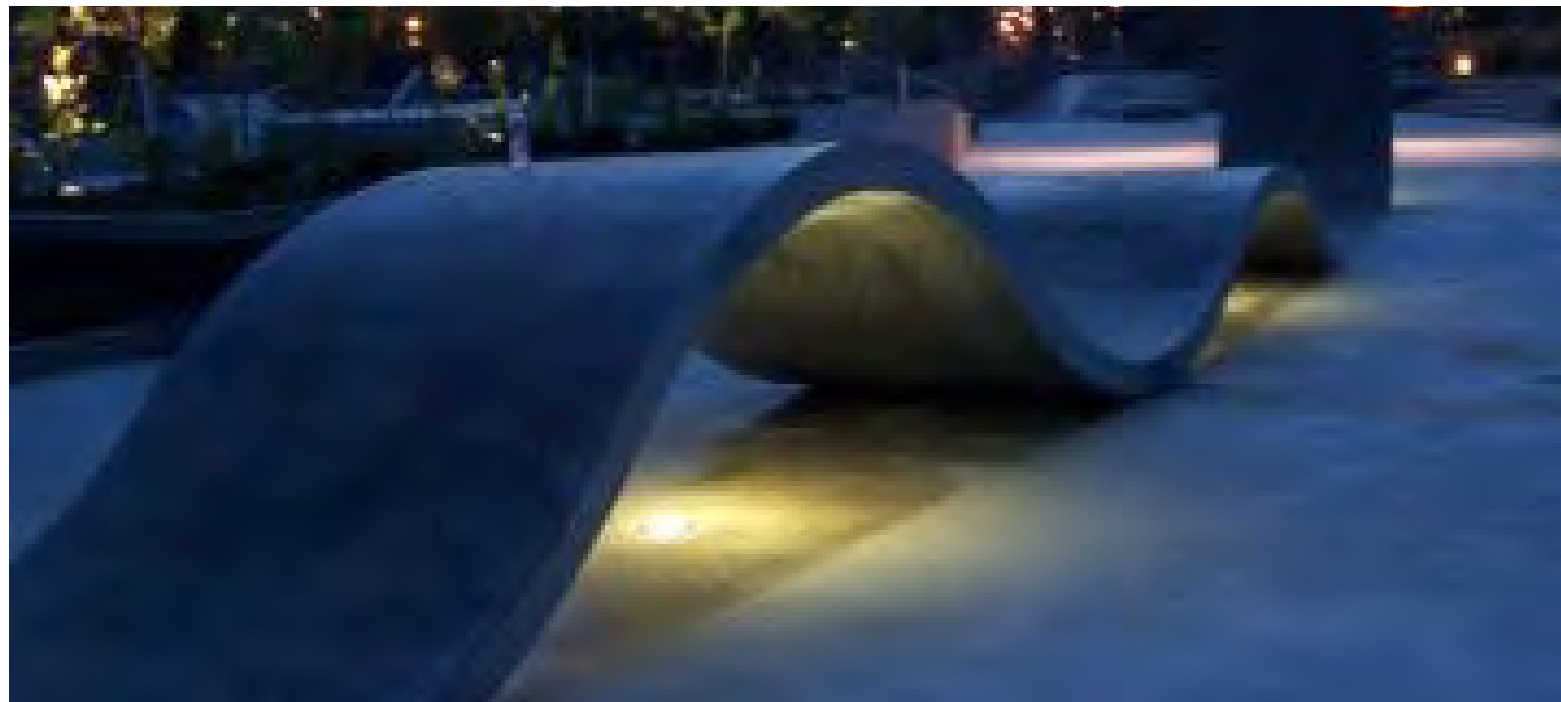
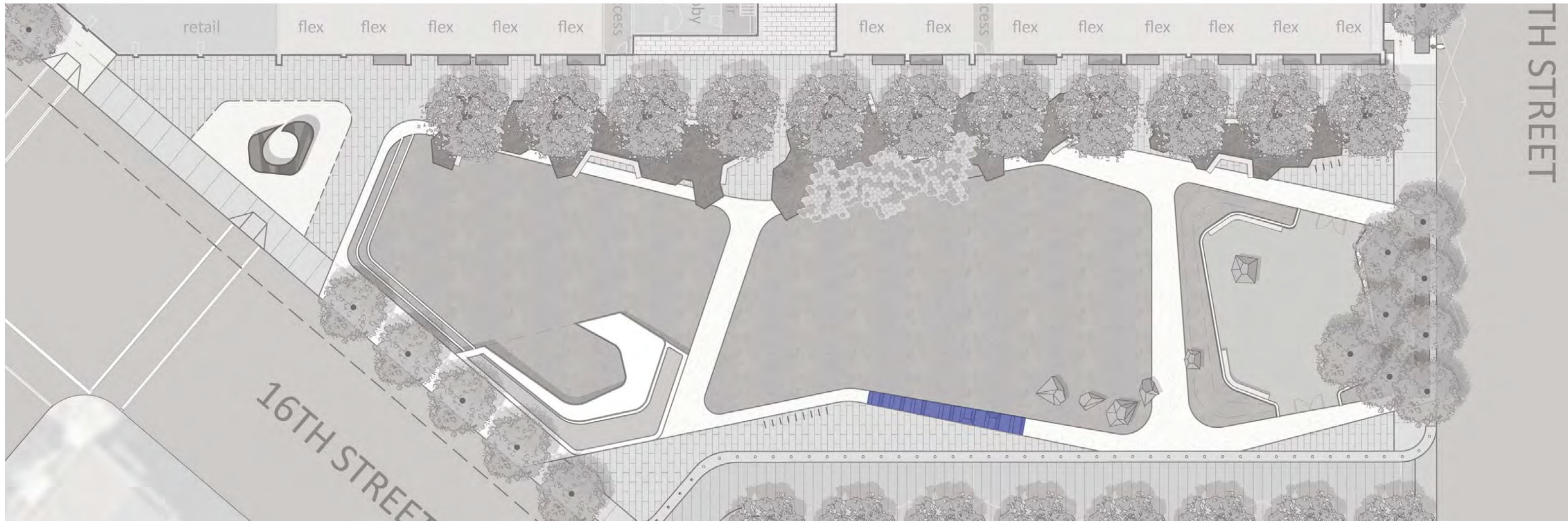
“PENTA-STEP” LANDSCAPE FEATURE



DAGGETT PARK - ARCHSTONE POTRERO
CIVIC DESIGN REVIEW - PHASE 1 SCHEMATIC DESIGN - JAN 23 2012

CMG
ARCHSTONE
CONGER MOSS GULLARD
500 THIRD STREET SUITE 215
SAN FRANCISCO, CA 94107
TELEPHONE: 415/495-3070
FACSIMILE: 415/495-3080

THE "WAVE"



LAWN FEATURES



DOG RUN



DOG RUN



DAGGETT PARK - ARCHSTONE POTRERO
CIVIC DESIGN REVIEW - PHASE 1 SCHEMATIC DESIGN - JAN 23 2012

CMG
ARCHSTONE

CONGER MOSS GUILLARD
500 THIRD STREET SUITE 215
SAN FRANCISCO, CA 94107
TELEPHONE: 415/495-3070
FACSIMILE: 415/495-3080

GARDEN EDGE



GARDEN EDGE



4" - 8" COR-TEN STEEL PLANTER EDGE



SEATING AREAS: Concrete, Steel with Wood seat and back, length of back and arm rests consistent with City requirements for public spaces.

GARDEN EDGE



Mixed Native/Adapted Border: 2' - 3'-6" Height, seasonal variety, color , Butterfly and Hummingbird habitat.