



Raymond S. Kimbell Playground Renovation

San Francisco Arts Commission –
Civic Design Review

January 23, 2012

Dan Mauer, Project Manager

Edward Chin, DPW Landscape Architecture

Will Kwan, DPW Architecture



2008 Clean & Safe Neighborhood Parks Bond

Project Description:

The project scope will include the replacement of the restroom facilities, the children's play area, and lawns; restoration of pathways; upgrade to the infrastructure including lighting and irrigation, modifications to the site to remove barriers and improve accessibility, and overall reconditioning of the park landscape.

Project Budget: \$3,300,000



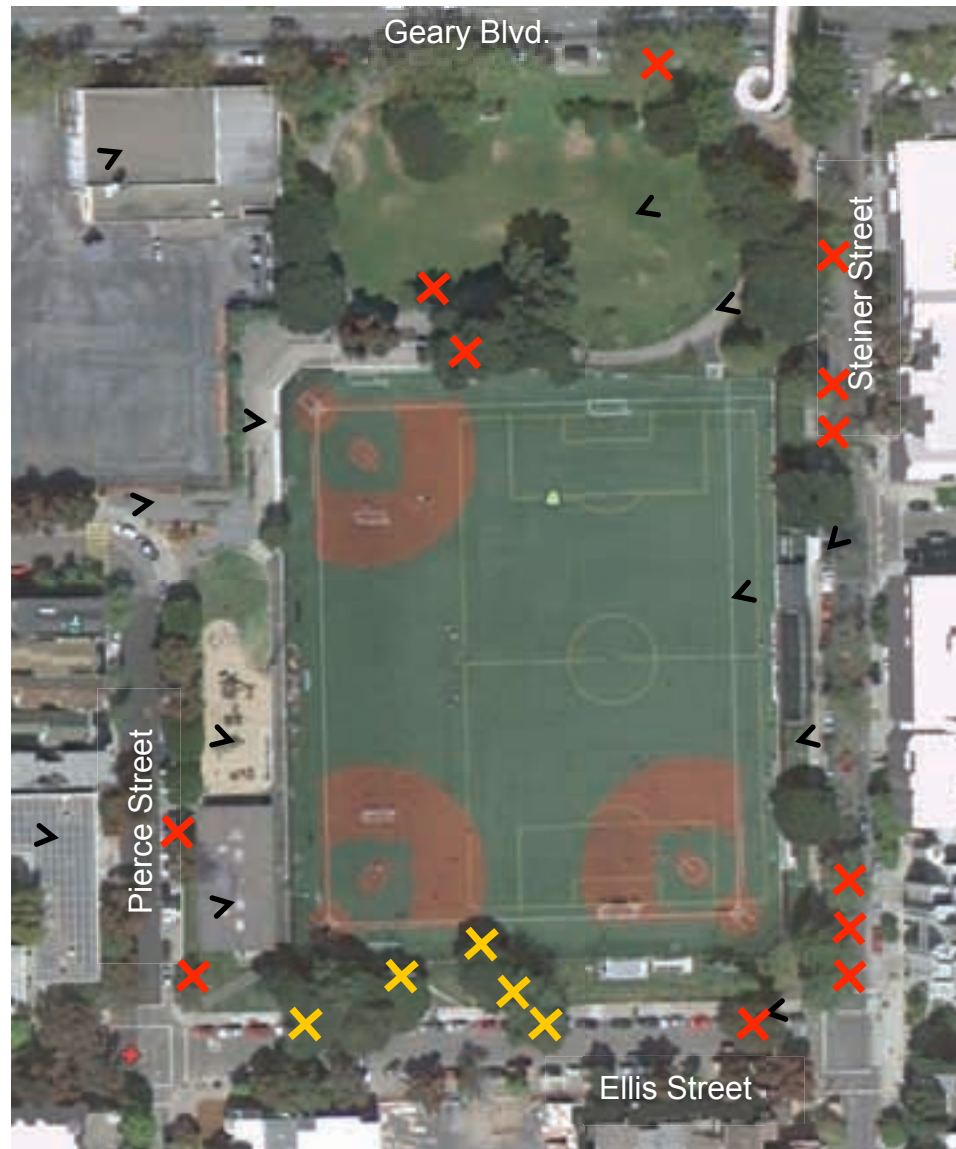
The 2008 Clean and Safe Neighborhood Parks Bond will:

- Fix and improve park restrooms citywide
- Eliminate serious earthquake safety risk in neighborhood and waterfront park facilities
- Renovate parks and playgrounds in poor physical condition
- Replace dilapidated playfields
- Restore the health of the park's urban forest, planting new trees
- Repair nature trail systems in the city's parks
- Attracting matching community and philanthropic support

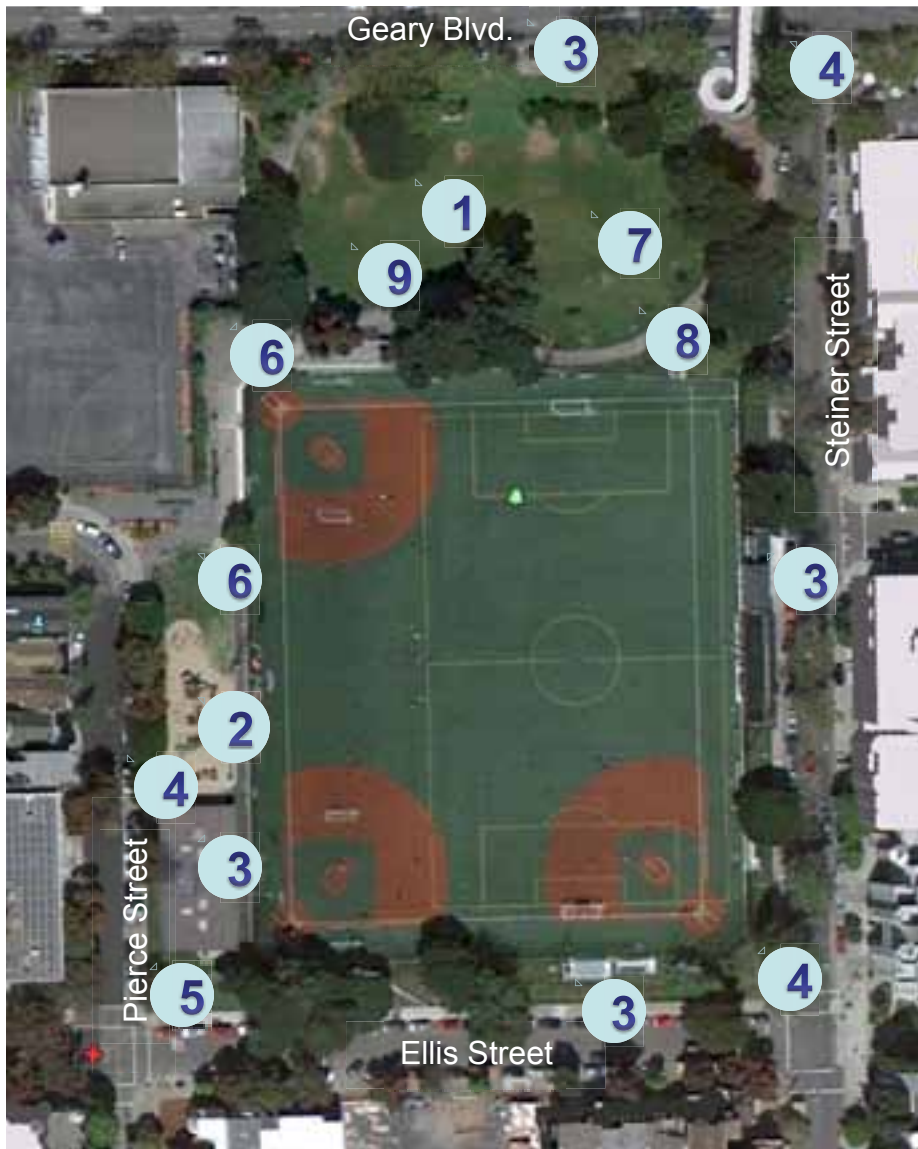


Existing Site & Neighborhood Context

- Gateway High School
- Bleachers
- Entry Plaza
- Playground
- Maxine Hall Center
- Clubhouse



- Meadow
- Pathway System
- Maintenance Storage
- New Fields (renovated 2010)
- Newly Renovated Landscape Perimeter
- Red: Remove and Replaced
- Yellow: Phased Removal



Design Goals

- 1 Relocate playground
- 2 Replace playground with basketball/fitness area
- 3 Replace clubhouse bathroom & storage bldg.
- 4 Repair sidewalk/ curbs, as required
- 5 Install curb ramps
- 6 Provide accessible seating at bleachers
- 7 Renovate lawn and irrigation
- 8 Renovate internal pathways
- 9 Improve pathway lighting



Existing Conditions/ Issues



External Restrooms (N. View)



Replace Clubhouse (West View)

- Restrooms
- Storage
- Eliminate Loitering/ Sleeping
- Eliminate Debris/ Garbage Dump



Tot Play Structures (West View)



Older Play Structures (West View)
Renovate Playground

- Abate CCA



Existing Conditions/ Issues



Improve Entry Plaza (N. View)

- New Seating
- Enhance Planting
- Maintain New Art / Mural



Bleachers North View)

- Provide Accessible Seating
- Comply with ADA Code



Meadow Looking West

- Discourage Active Ground Sport Play
- Remove Stumps



Meadow Looking East

- Improve Drainage
- Repair Irrigation



Existing Conditions/ Issues



Pathway/ Tree Roots

- Reconfigure Pathway
- Add Internal Loop Path



Repair/ Relocate Lights



Berm along Geary Blvd

- Buffers Traffic and Noise



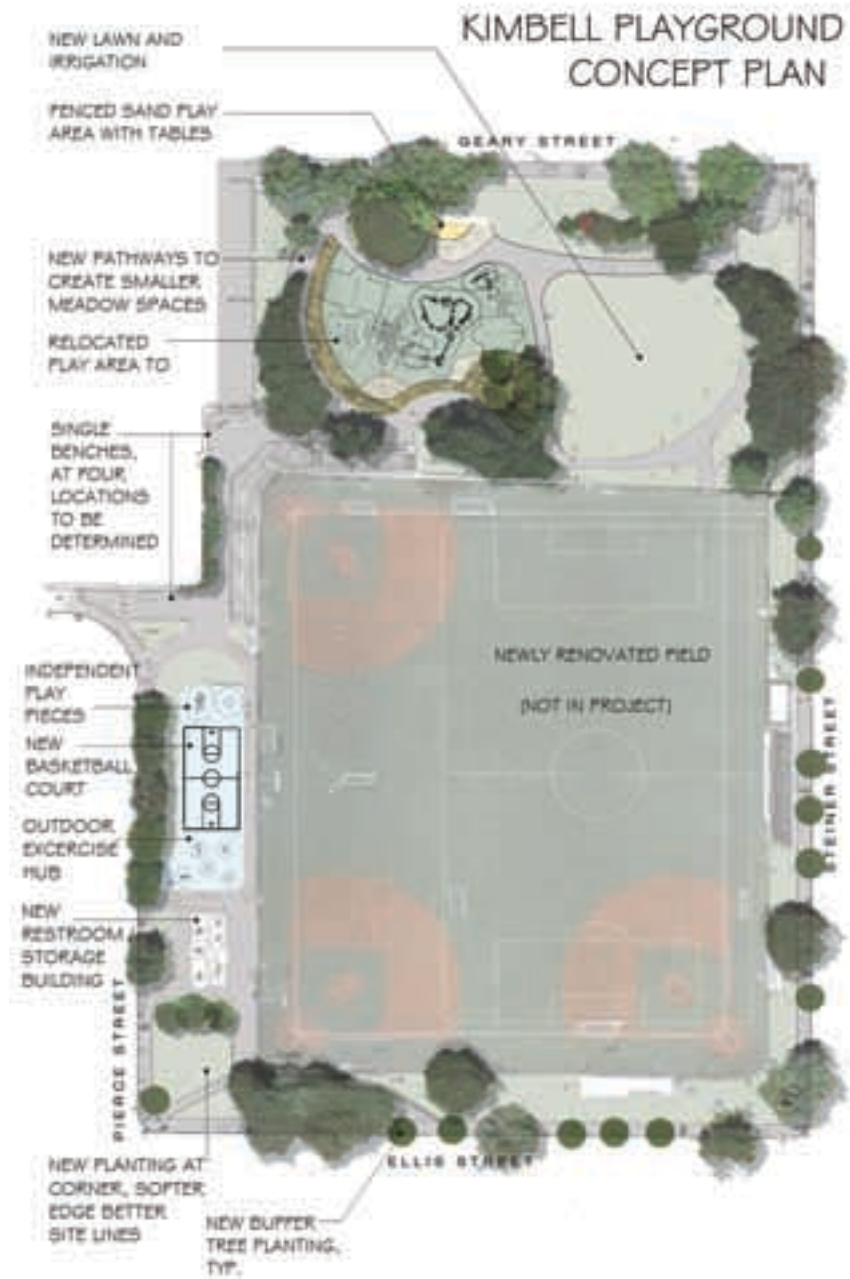
Install Curb Ramps (Pierce/ Ellis)

- Comply with ADA Code



Sidewalk Repair (Geary St.)

- Safety Improvements



Site Plan

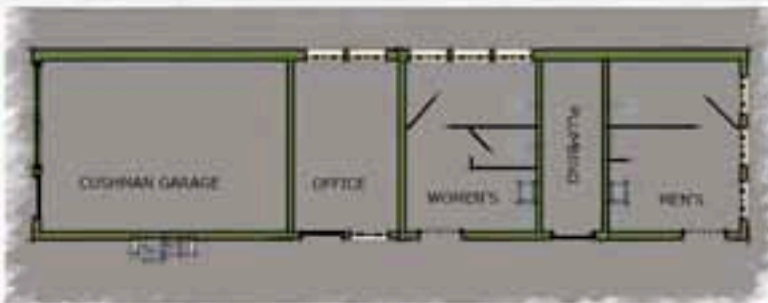


Restroom Structure Concept

(Sample of Styles / Finishes)

MOUNTAIN LAKE PARK RESTROOMS

FLOOR PLAN



D.P.

FRONT ELEVATION



SIDE ELEVATION



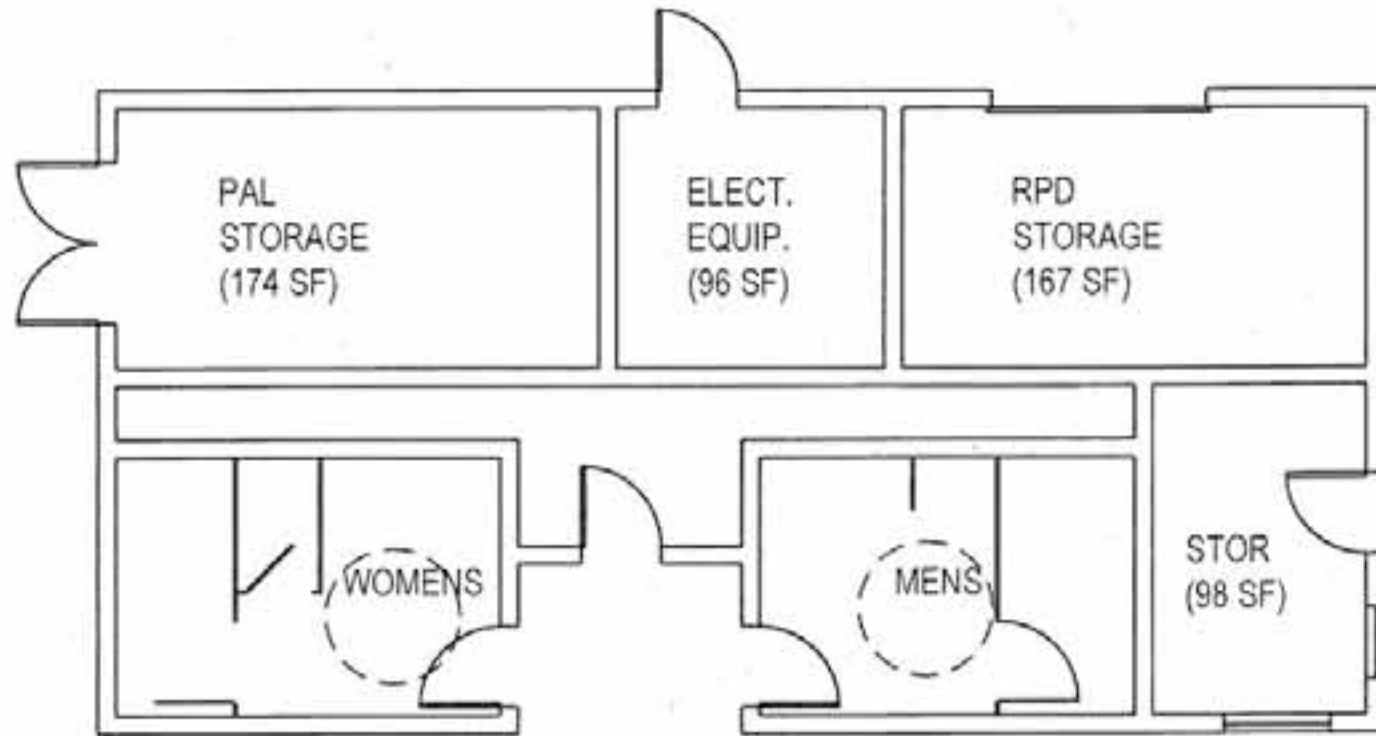
EXISTING VIEW



PROPOSED DESIGN - PHOTOMONTAGE



Proposed Restroom Floor Plan





New restroom and storage building footprint overlain on existing footprint



Built in 1965
Approximate Existing Square Footage: 3,250
Approximate Proposed Square Footage: 1,800



Existing Storage Structure – Alternate Roof Shingle Option





Playground Concept Plan





School Age Play Structure





School Age Equipment Options



(Option Only)





Pre-School Age Equipment





Climbing Boulders





Swing Equipment





Site Furnishings





Exercise Equipment

(Samples Only)





Basketball Court / Independent Play Pieces





Project Schedule / Next Steps

- Civic Design Phase I : Jan 2012
- Recreation & Parks Commission Approval : Feb 2012
- Construction Documents : Feb 2012 – June 2012
- Bid & Award : July 2012 – Oct 2012
- Construction : Nov 2013 – June 2013



Thank you!

Additional comments, contact Dan Mauer at
415. 581.2542; Dan.Mauer@sfgov.org