

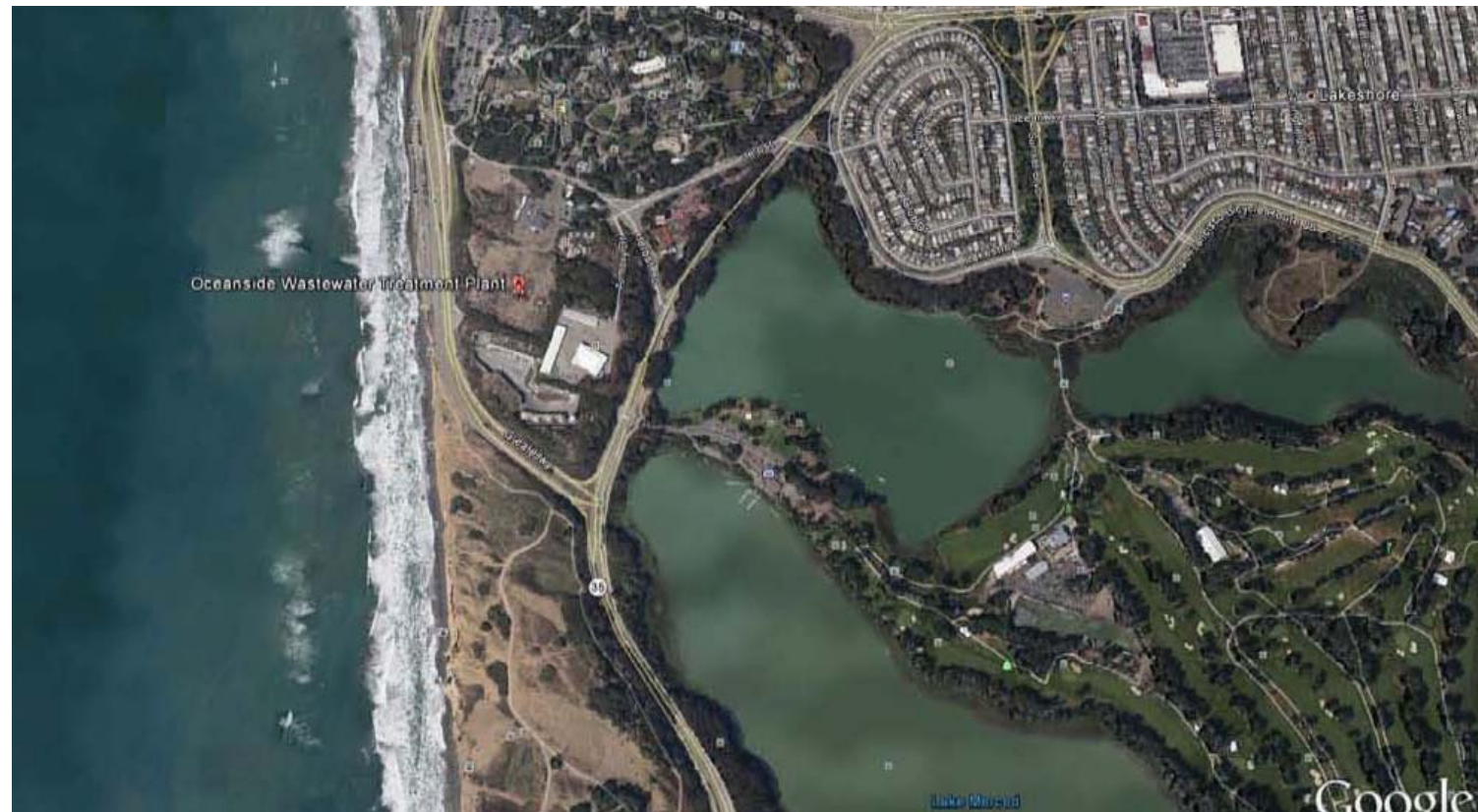


Awning Replacement | Civic Design Review Phase 1 | June 17, 2013

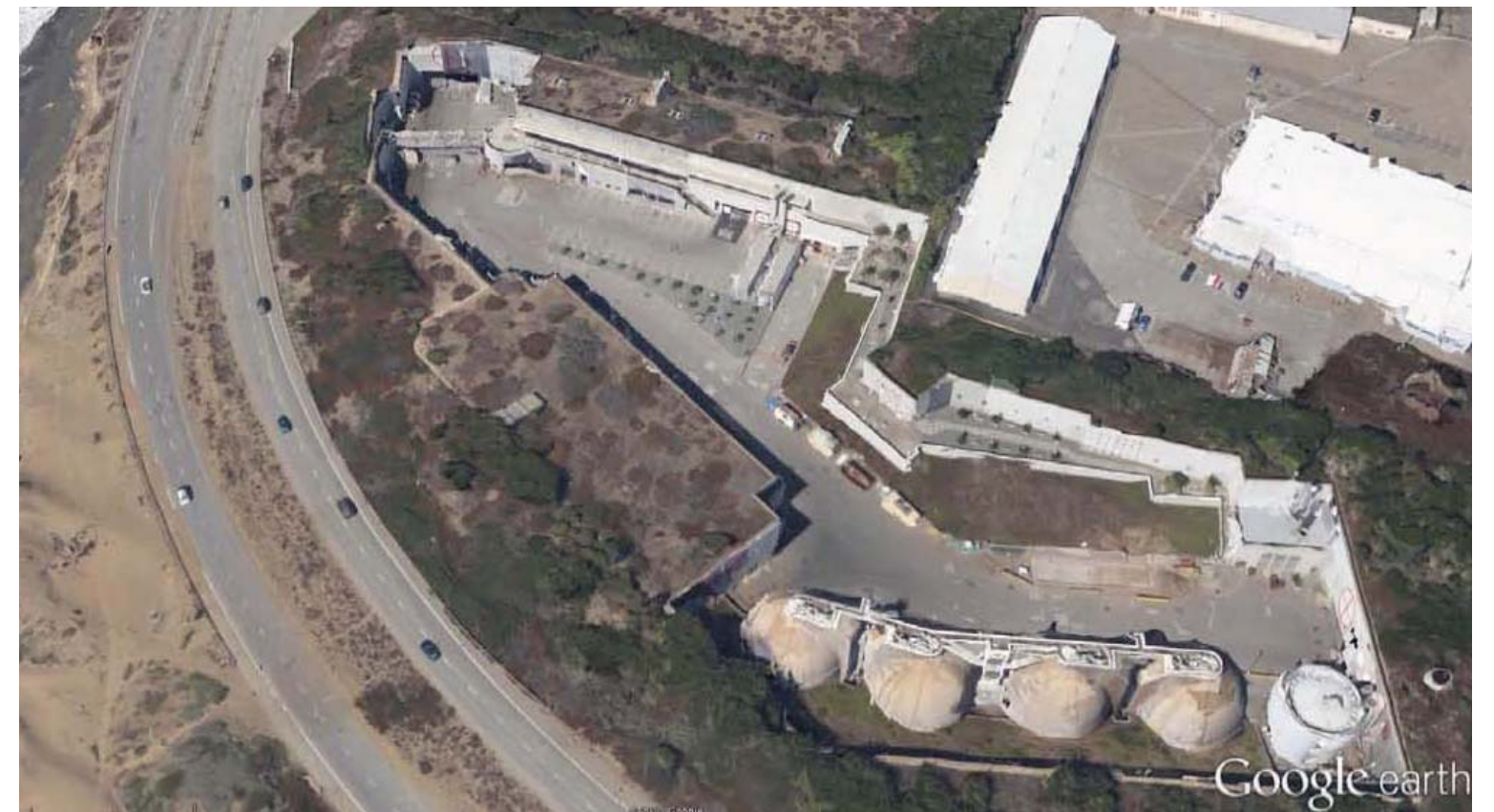
Building 930
Design-Build Project

Building Design and Construction
SF Department of Public Works

Oceanside
Water Pollution



Project Location Aerial Map
Oceanside Wastewater
Treatment Plant



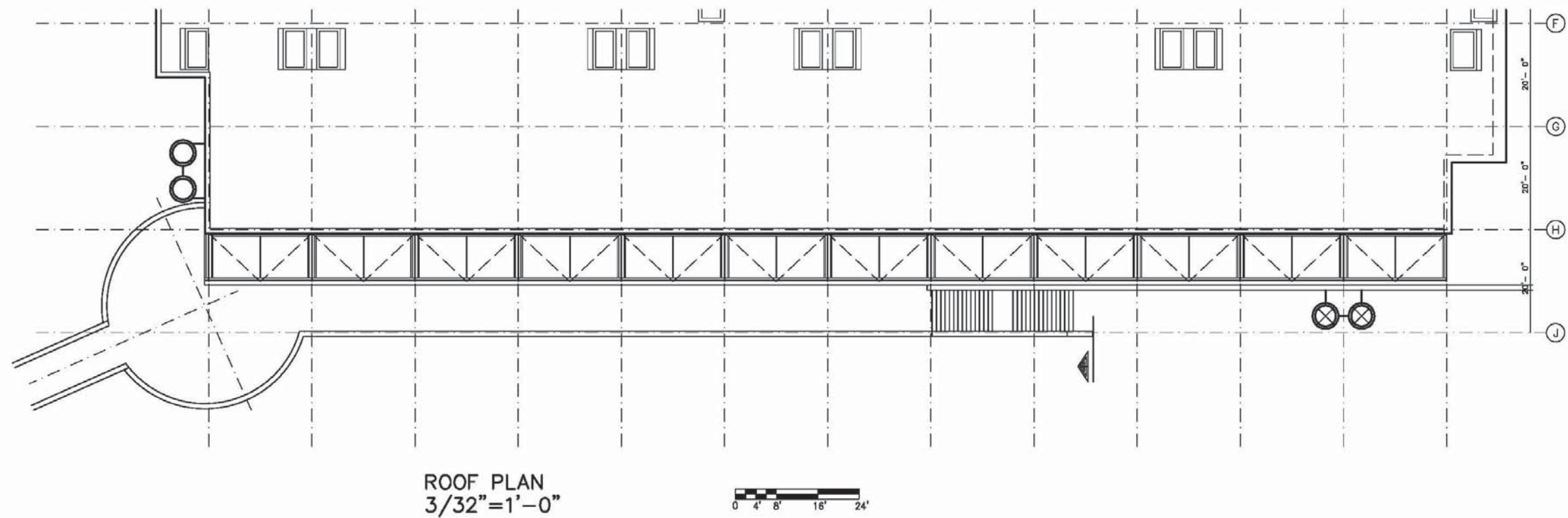
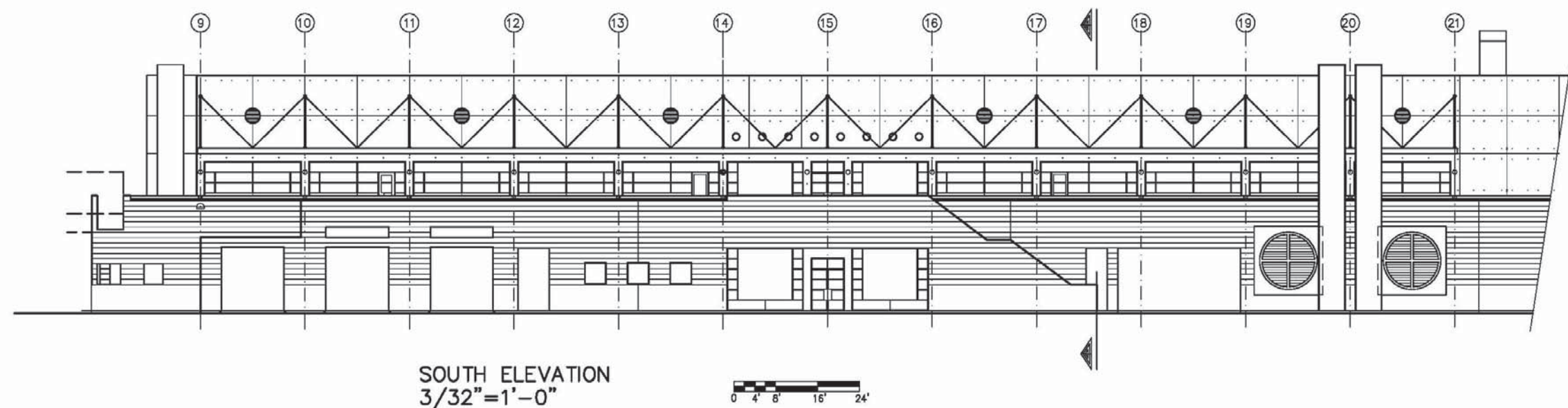
Existing Site Aerial Image

AWNING DESIGN CRITERIA

- Replace damaged glass block canopy and related support structure only at building 930. All otherwise existing will remain.
- Canopy shall consist of an impervious, non-flammable, lightweight, and light reflective awning fabric material and rust resistant stainless steel frame.
- Awning shall have a curved profile slopping back to the existing concrete wall and shall be equipped with rust resistant gutter to drain into an existing drain ports.
- Fabric shall consist of Polytetrafluoroethylene (PTFE) coated fiberglass tensioned membrane white in color.
- Framing shall consist of round with 316 SS tubing support with metal plates, tabs, bracing, fasteners, and rod connections supports engineered to withstand weight, seismic and uplift and related loads.
- The Contractor shall furnish, deliver and install, ready for service, a pre-engineered tensioned membrane cladding system along with the support system, clamping system and base plates.
- Cladding system supplier shall coordinate design and installation with the City to ensure a compatible and proper installation. The Subcontractor shall be responsible for the engineering, detailing and patterning of all fabric and steel components, fabrication, supply, and installation work.
- The tensile membrane structure shall comply with the International Building Code, 2009, California Building Code 2010 edition and the San Francisco Building the latest edition in effect at the time this project is awarded.

Project Description





Existing South Elevation and Roof Plan



Existing Awning at South Elevation



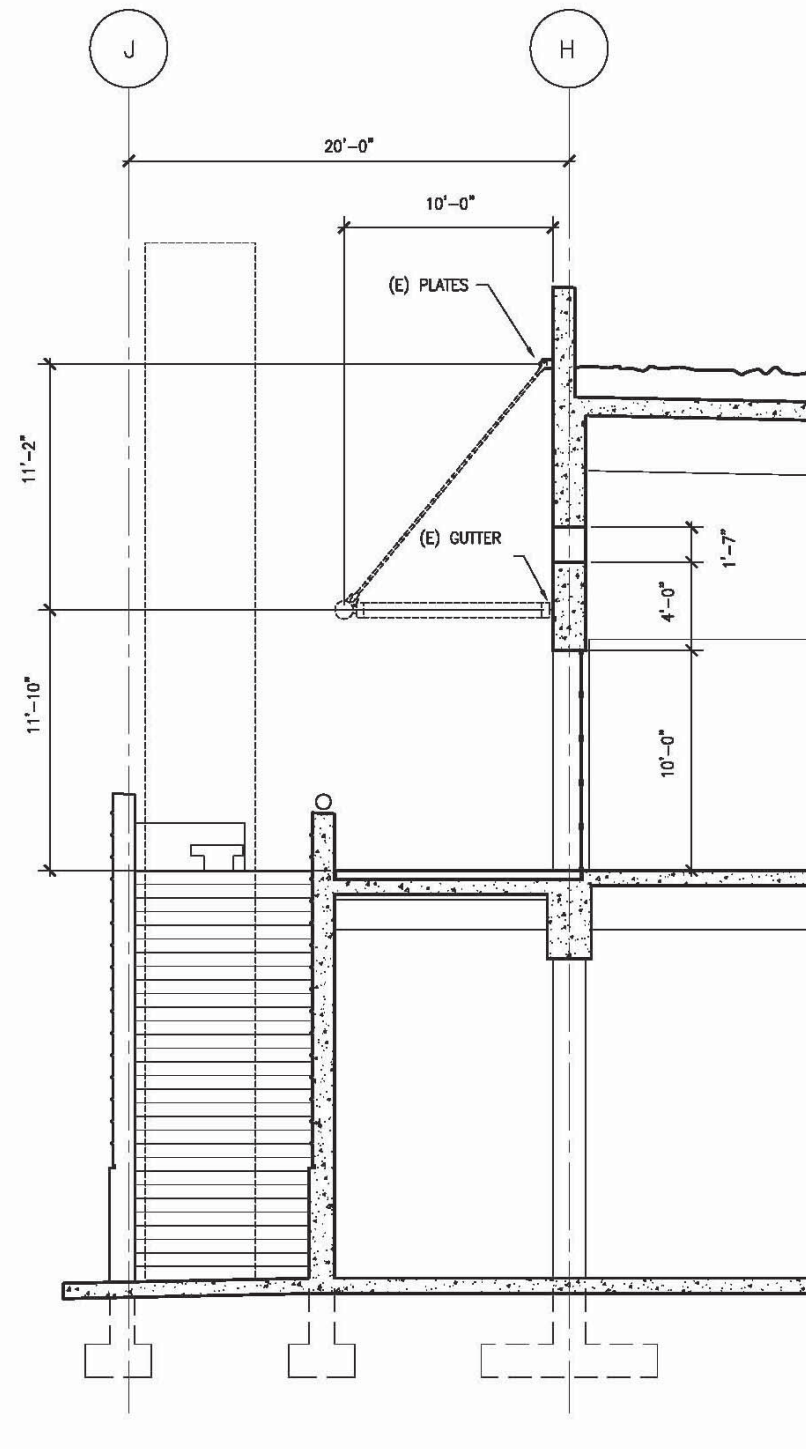
Existing Awning at South Elevation



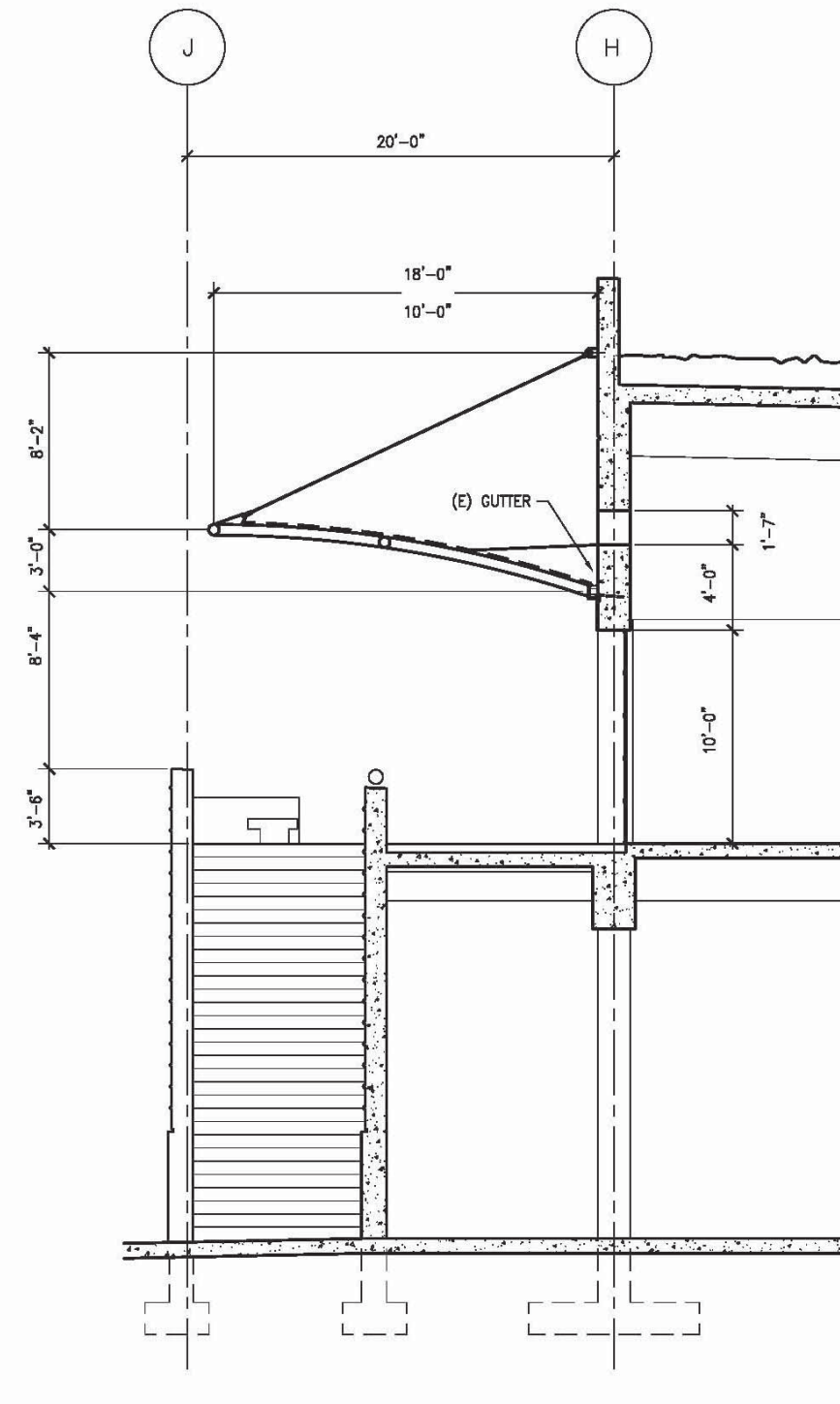
Existing Awning at Second Level Looking North-



Existing Awning



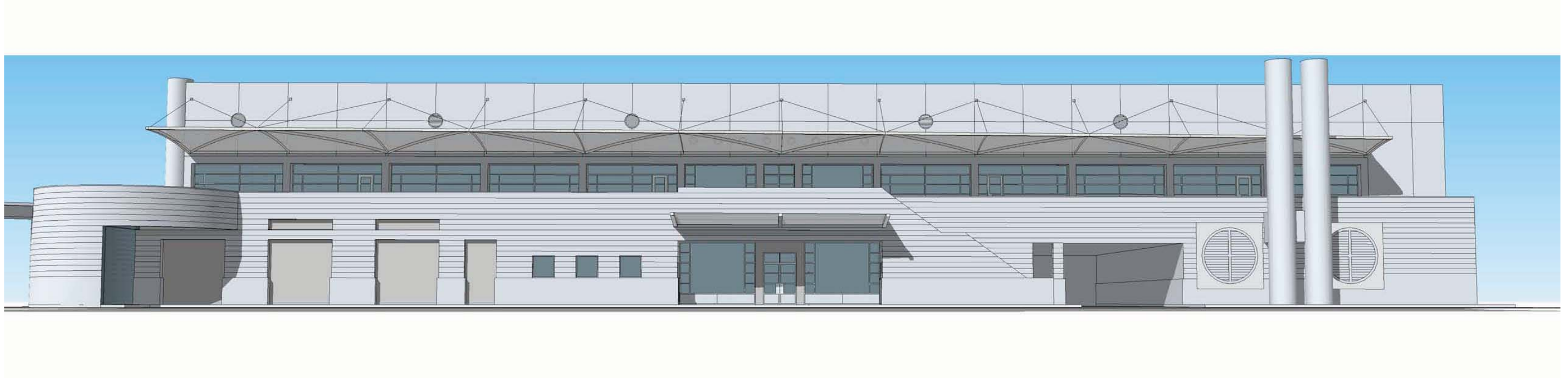
SECTION — EXISTING CANOPY
1/4"=1'-0"



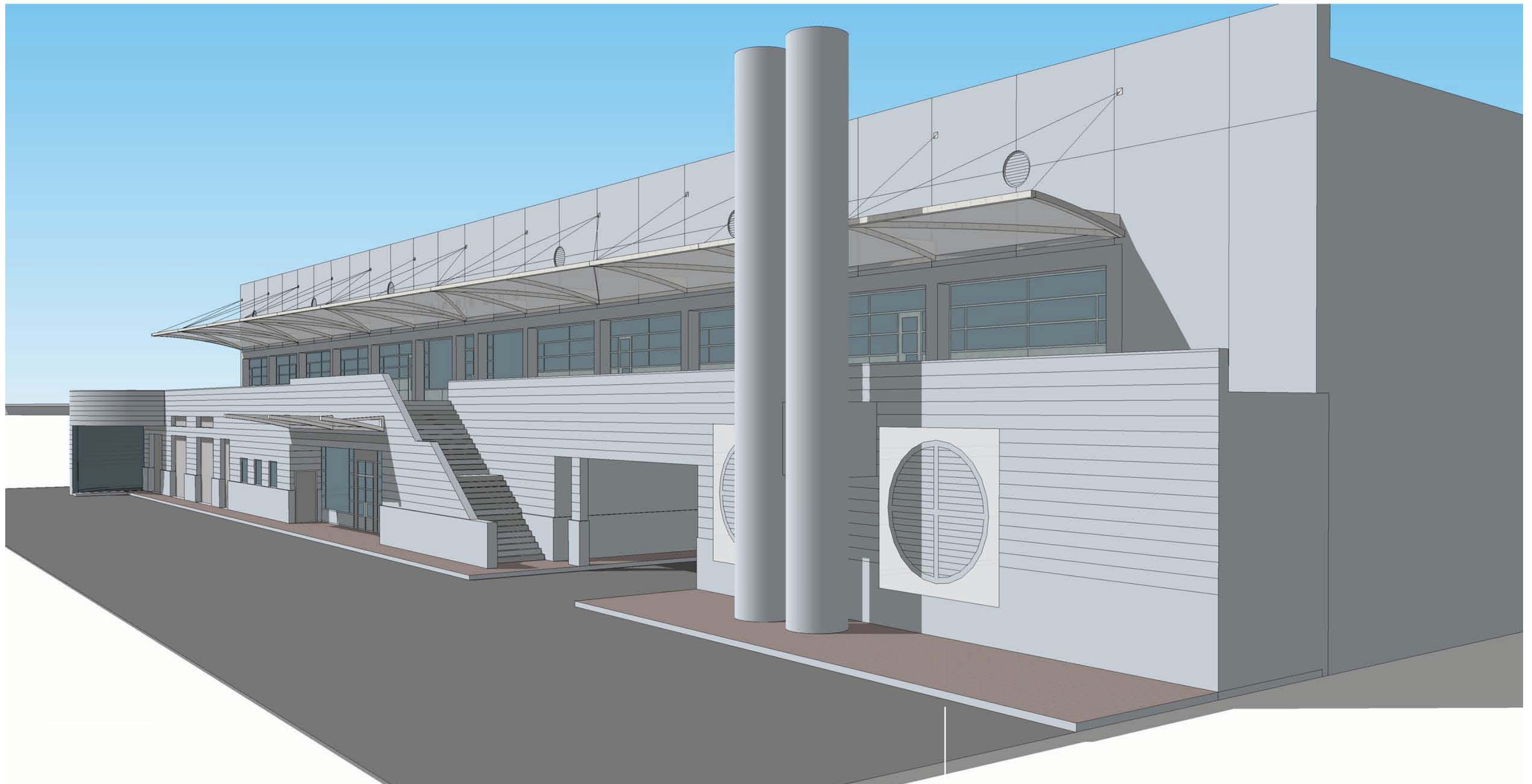
SECTION — CONCEPT 1 — STRETCH FABRIC CANOPY
1/4"=1'-0"



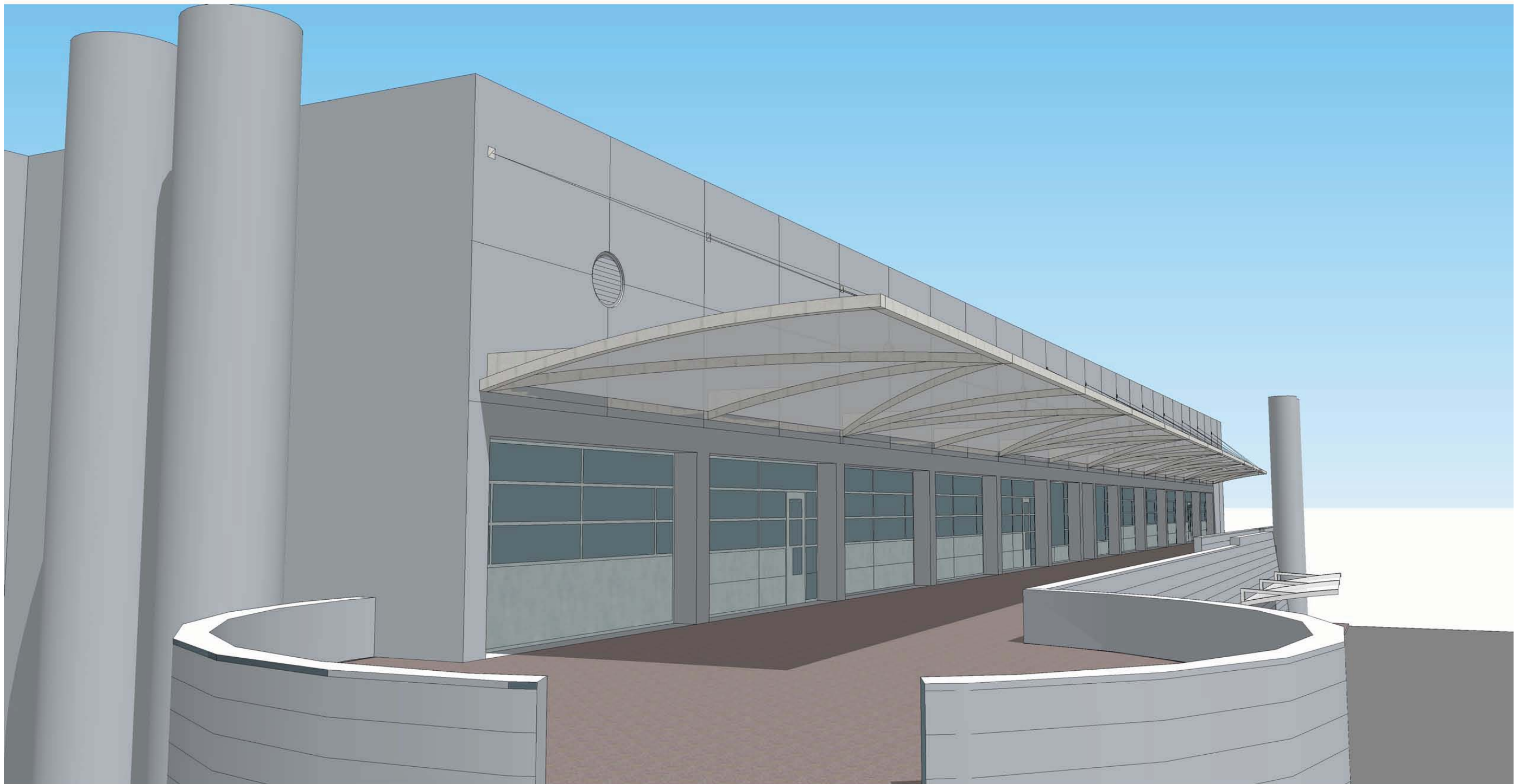
Existing and New Awning Sections



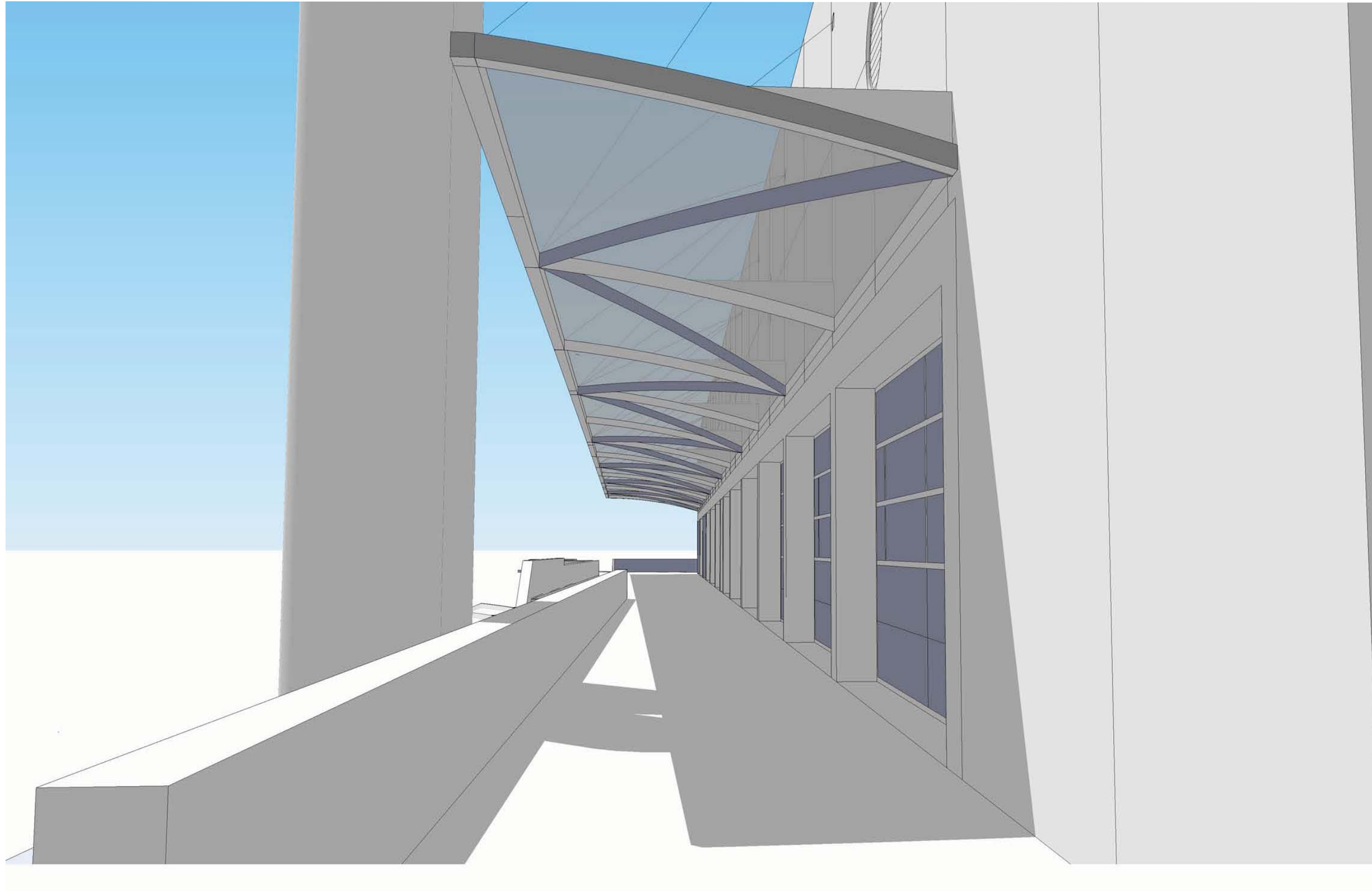
New Awning South Elevation and Roof Plan



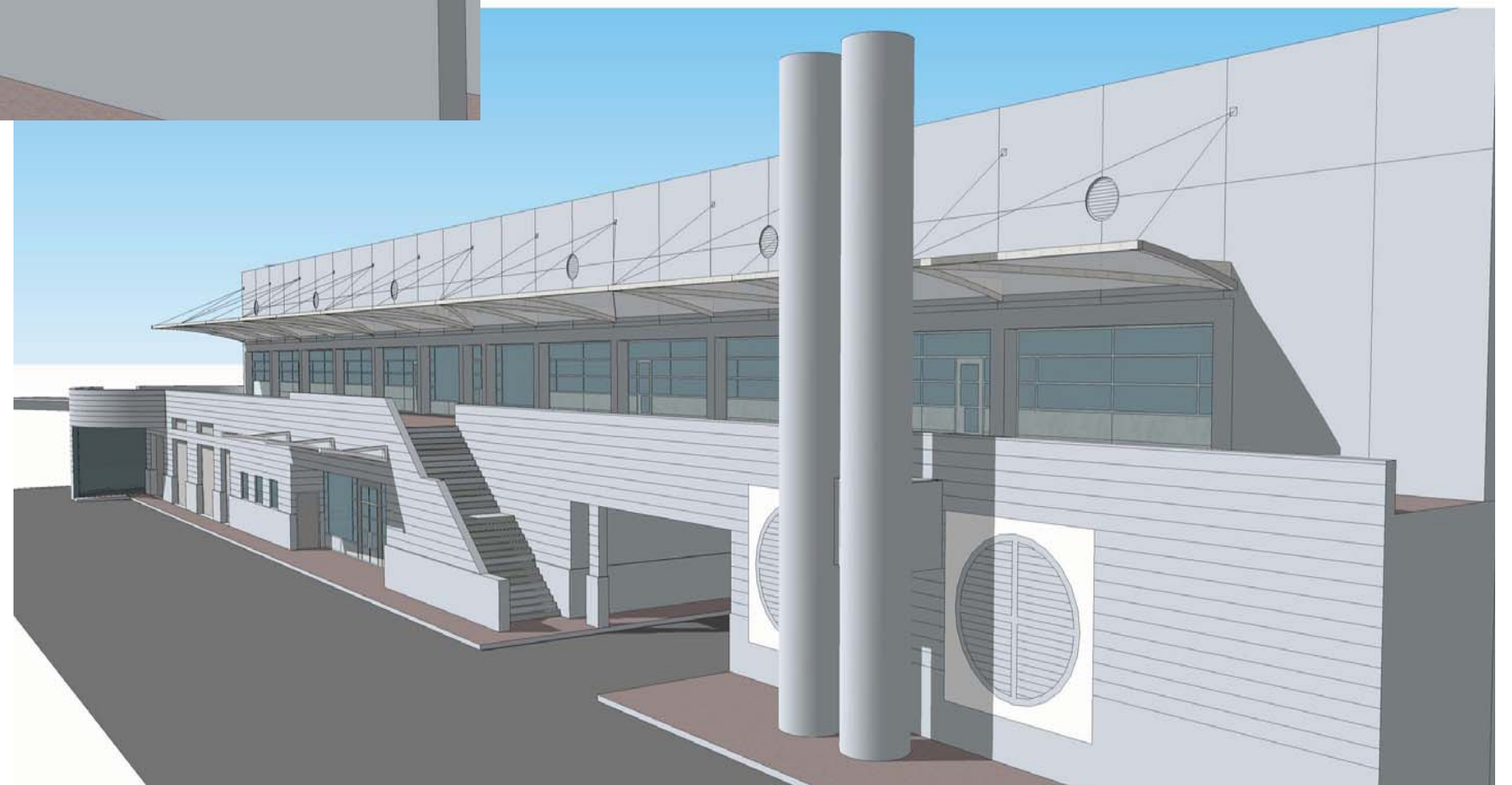
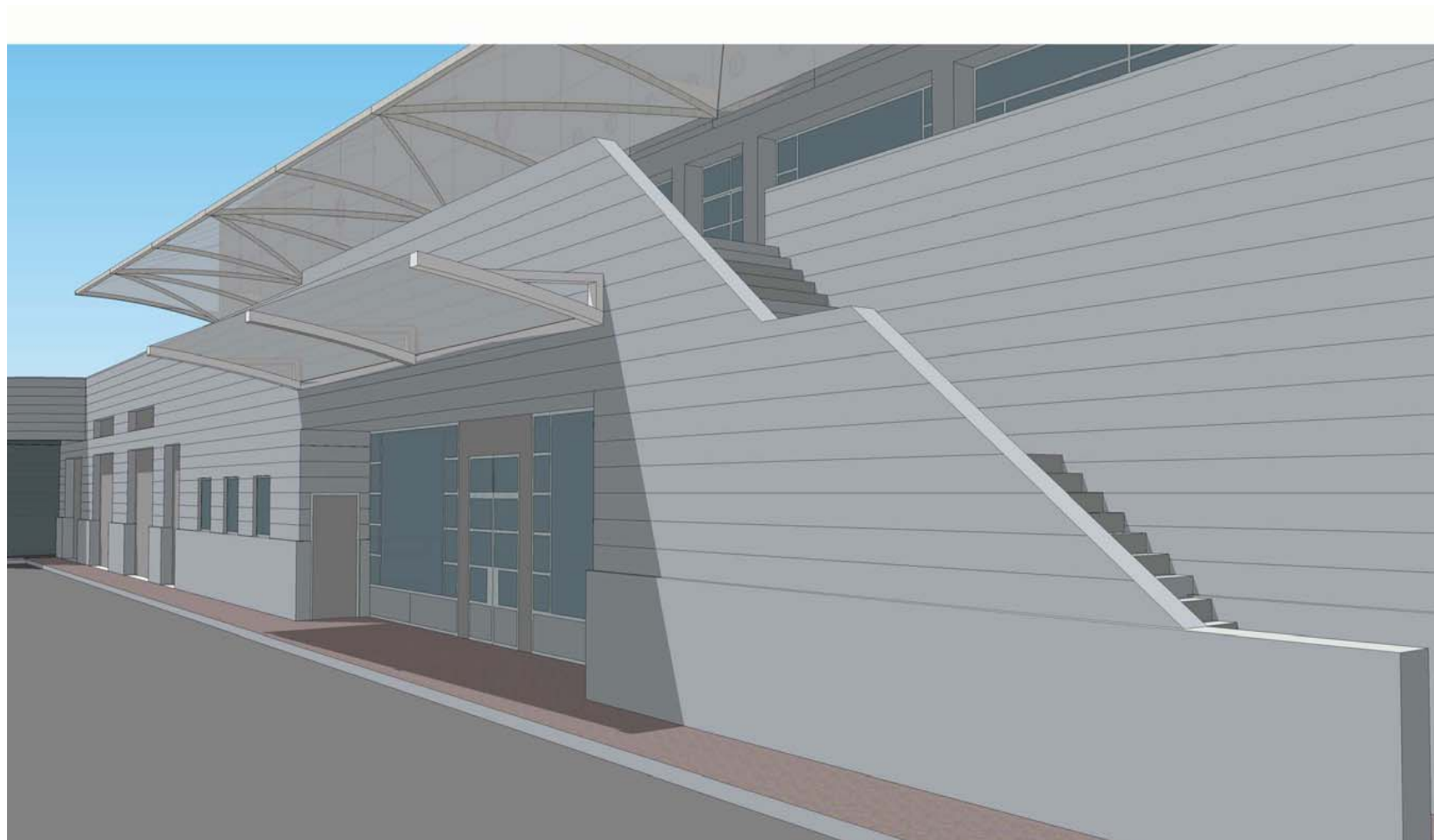
New Awning at South Elevation



New Awning at Second Level South Elevation



New Awning - Second Level - Looking West



New Awning at South Elevations