

Ruth Williams Memorial Theatre

BAYVIEW OPERA HOUSE

TOM ELIOT FISCH / **KnappArchitects** with **HOOD**

BAY VIEW HUNTERS POINT TIMELINE



1700s
1700 - 1775
Ohlone tribe occupy tidal wetlands; Spanish missionaries begin visits

1800s
1775 - 1830s
"Beacon Point" Franciscan monks from the Mission begin using area for cattle pastures

1849
Real estate development begins. Earliest developers are the Hunter brothers, giving "Hunters Point" its name

1867
First dry dock installed, ship building begins

1888
Opera House opens

1906
Earthquake

1914 - 1918
Ship building increases for World War I

1939 - 1945
Ship building dominates for World War II

1966
Riots

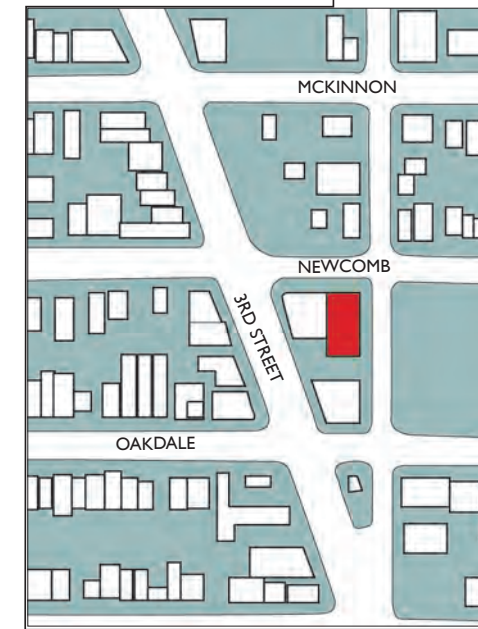
2007
Third Street Light Rail opens



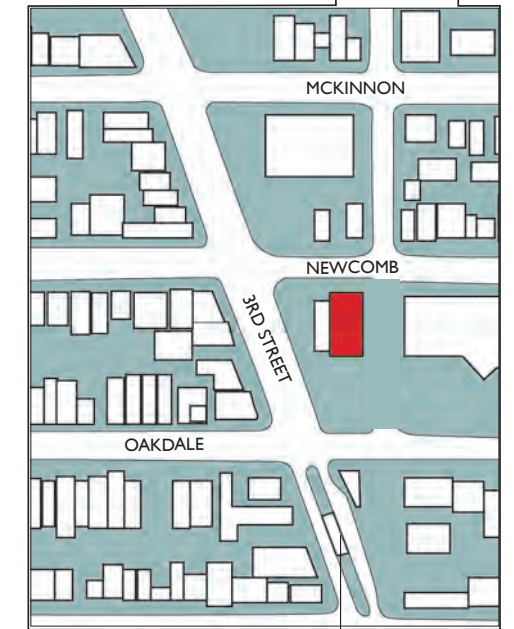
Pre-Opera House
Initial block layout begins



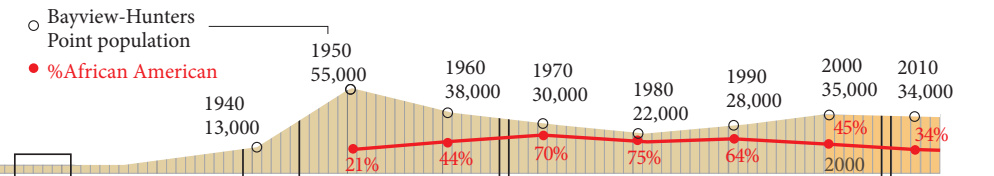
Opera House and Masonic Lodge Complete
Development filling in



Development continues



Third Street Light Rail opens

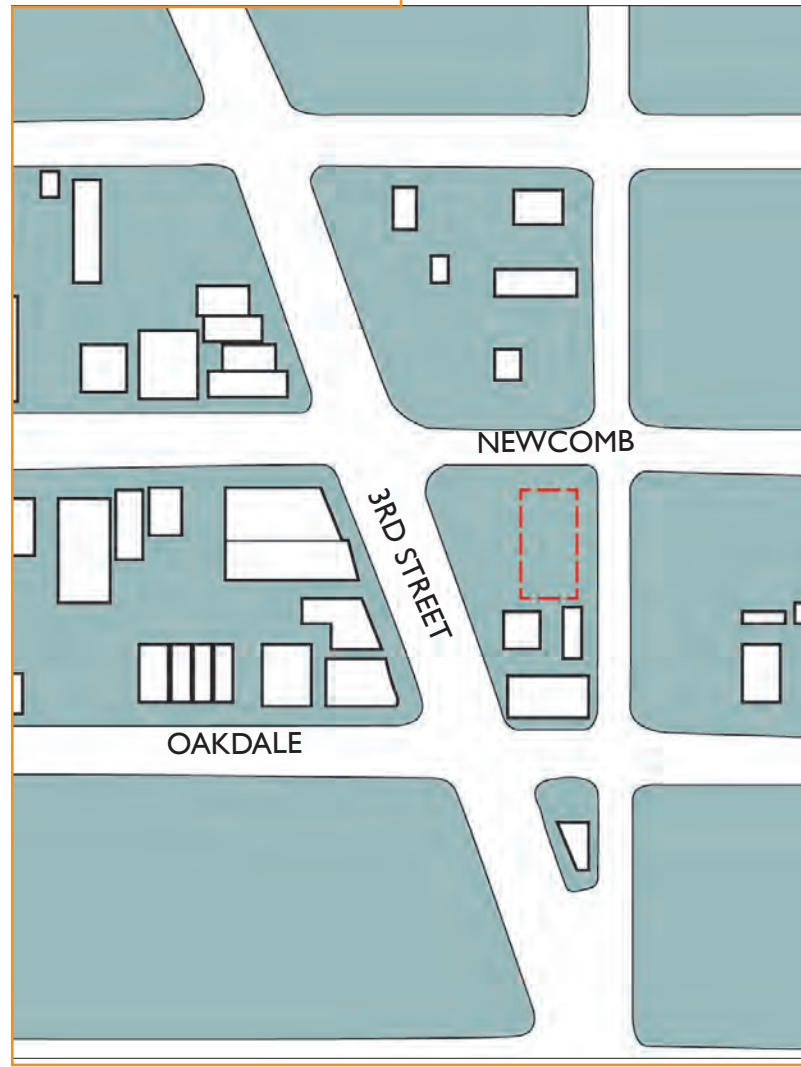


Ruth Williams Memorial Theatre
BAYVIEW OPERA HOUSE

TOM ELIOT FISCH / KnappArchitects with HOOD

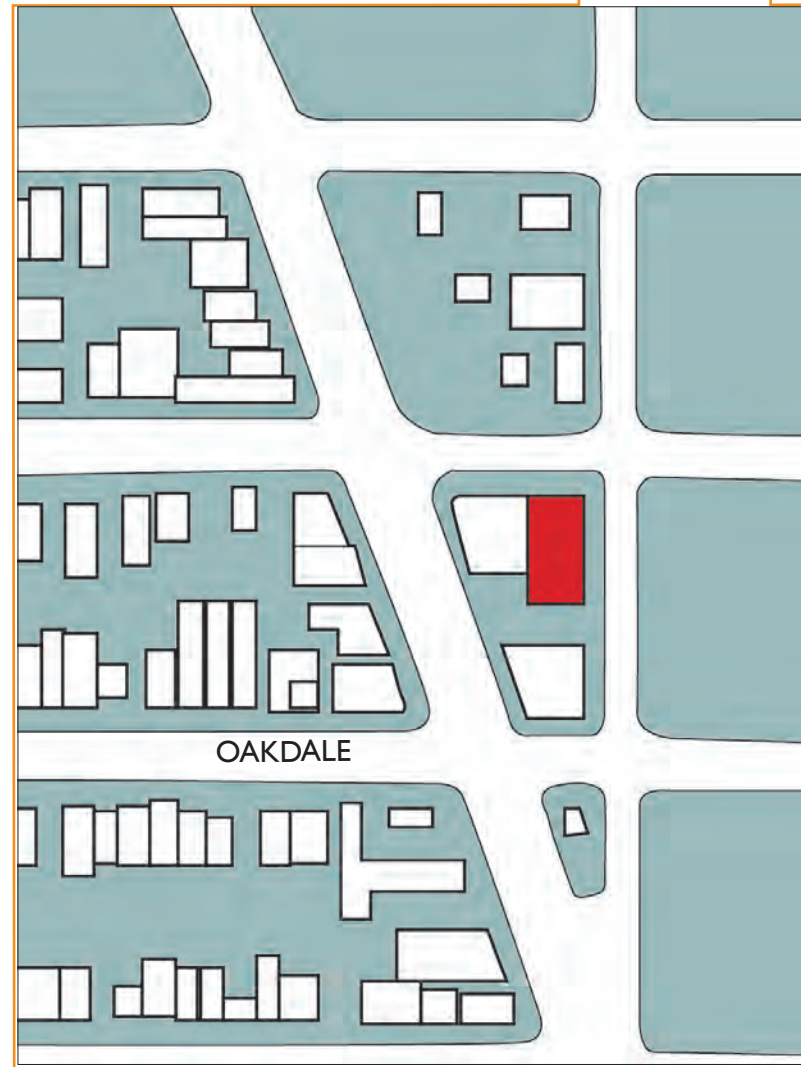
BAY VIEW OPERA HOUSE - HISTORIC MOMENTS

1849
Real estate development begins. Earliest developers are the Hunter brothers, giving "Hunters Point" its name



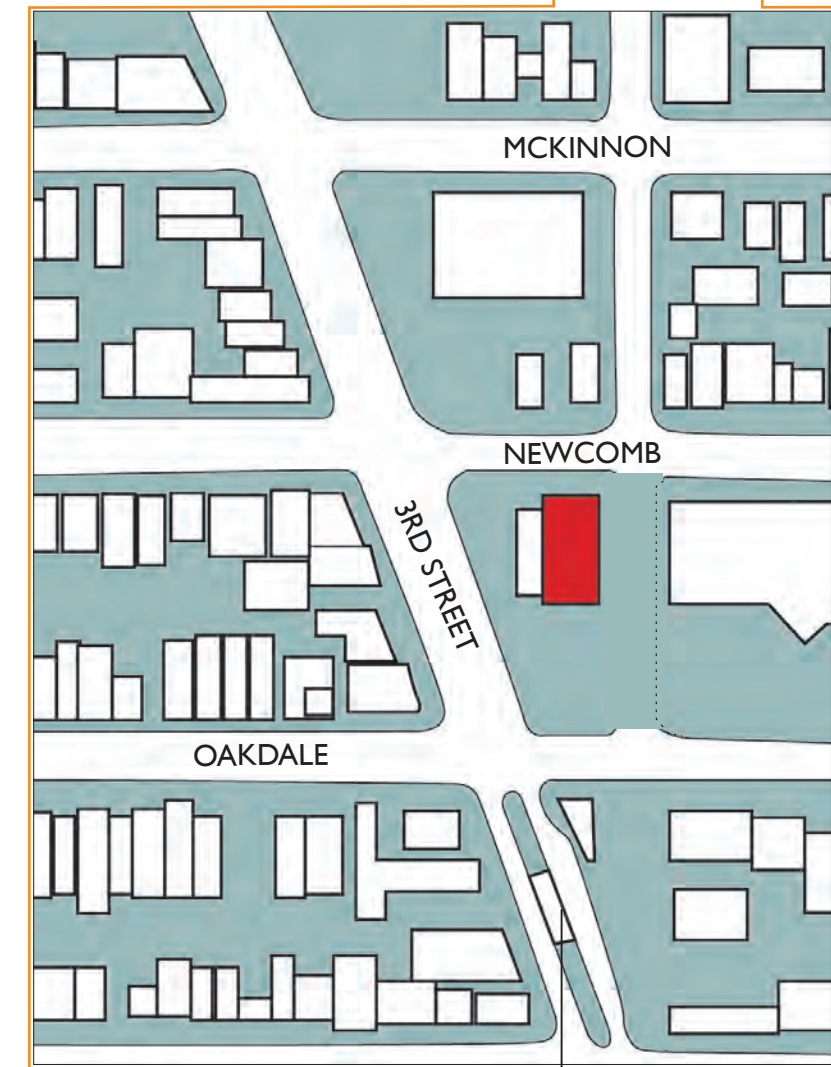
Pre-Opera House
Initial block layout begins

1888
Opera House opens



Opera House and Masonic Lodge Complete
Development filling in

2007
Third Street Light Rail opens



Third Street Light Rail opens

Ruth Williams Memorial Theatre
BAYVIEW OPERA HOUSE

TOM ELIOT FISCH / KnappArchitects with HOOD

EXISTING CONDITIONS

PROJECT SITE



SITE PLAN

SCALE: 1/64"=1'-0"

0' 32' 64'



Ruth Williams Memorial Theatre

BAYVIEW OPERA HOUSE

TOM ELIOT FISCH / KnappArchitects with HOOD

EXISTING CONDITIONS



NORTH SIDE OF OPERA HOUSE ON NEWCOMB AVENUE



SOUTH SIDE OF OPERA HOUSE ON OAKDALE



WEST SIDE OF OPERA HOUSE ON 3RD STREET



SOUTH SIDE OF OPERA HOUSE, PARKING LOT

Ruth Williams Memorial Theatre

BAYVIEW OPERA HOUSE

TOM ELIOT FISCH / KnappArchitects with HOOD

EXISTING CONDITIONS



NORTH BUILDING ELEVATION



PORCH OF OPERA HOUSE



CHILDREN'S OUTDOOR CLASSROOM



OUTDOOR STAGE AND SEATING



OPERA HOUSE PARKING

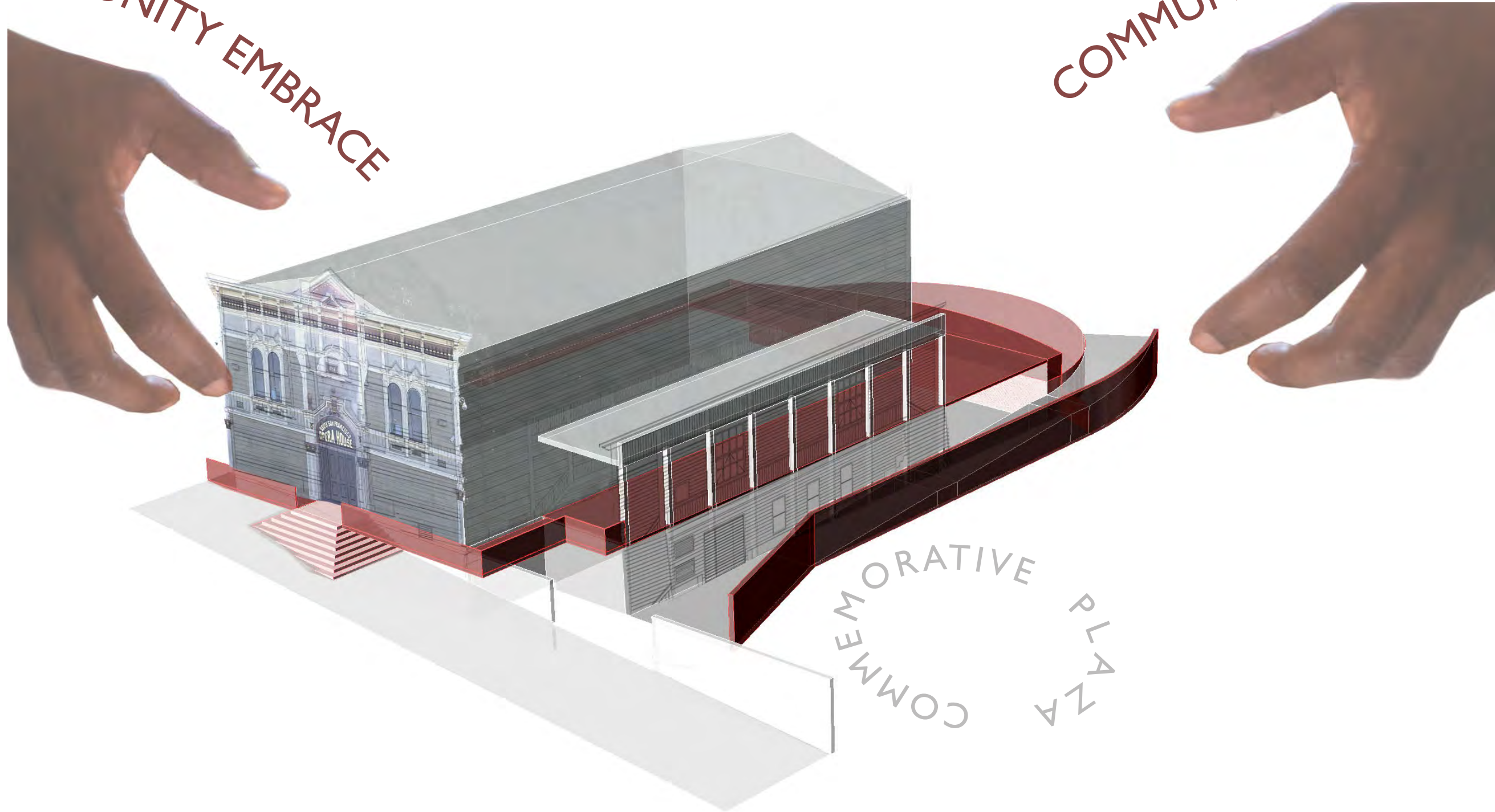
Ruth Williams Memorial Theatre **BAYVIEW OPERA HOUSE**

TOM ELIOT FISCH / KnappArchitects with HOOD

CONCEPT DIAGRAM

COMMUNITY EMBRACE

COMMUNITY EMBRACE

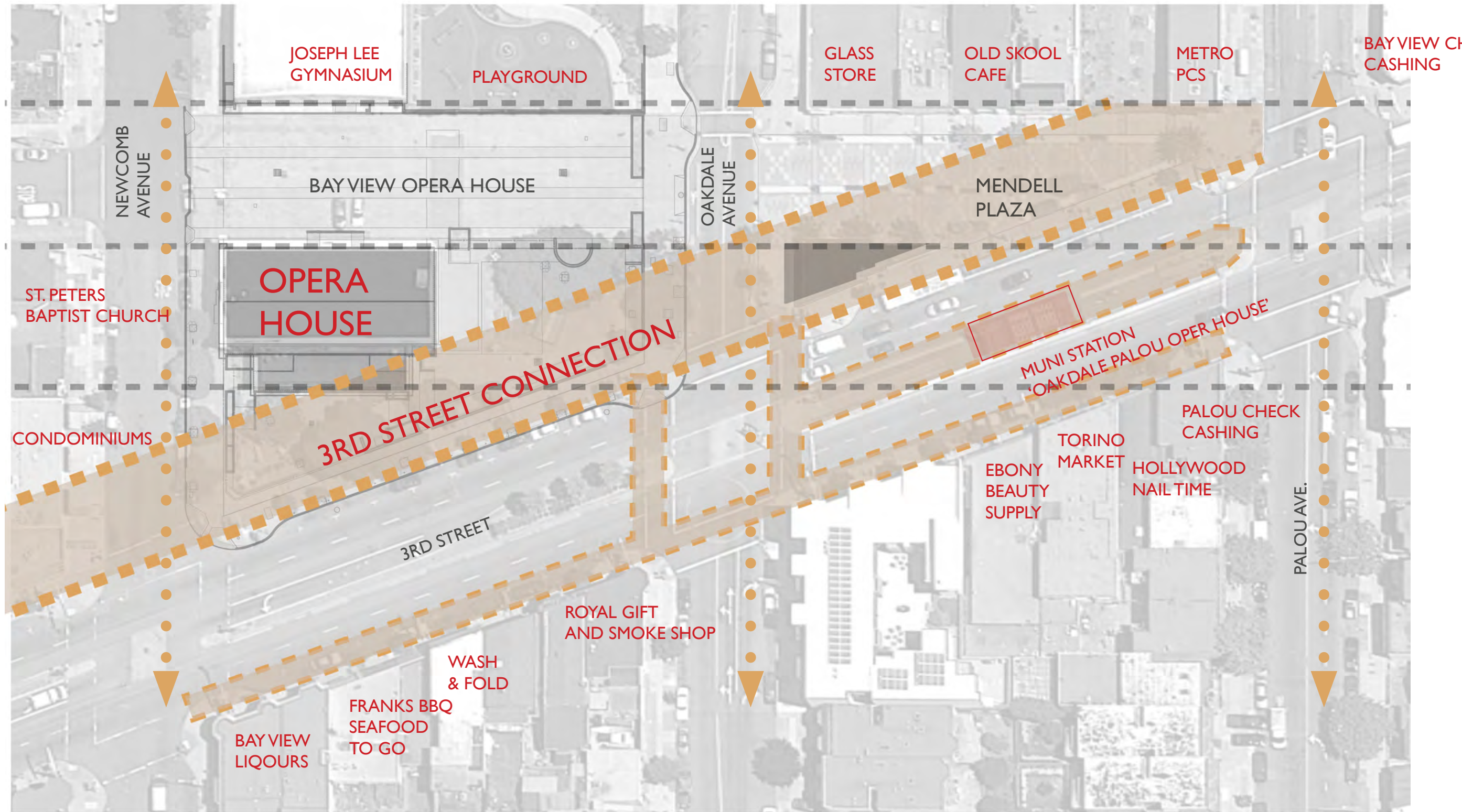


Ruth Williams Memorial Theatre
BAYVIEW OPERA HOUSE

TOM ELIOT FISCH / KnappArchitects with HOOD

CONCEPT DIAGRAM

3RD STREET CONNECTION



Ruth Williams Memorial Theatre

BAYVIEW OPERA HOUSE

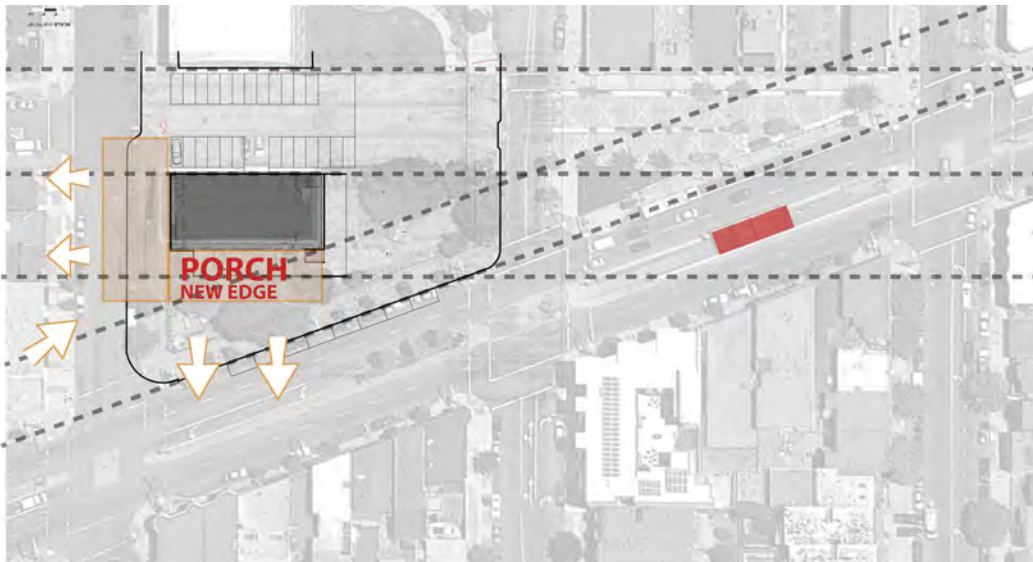
TOM ELIOT FISCH / KnappArchitects with HOOD

CONCEPT DIAGRAM

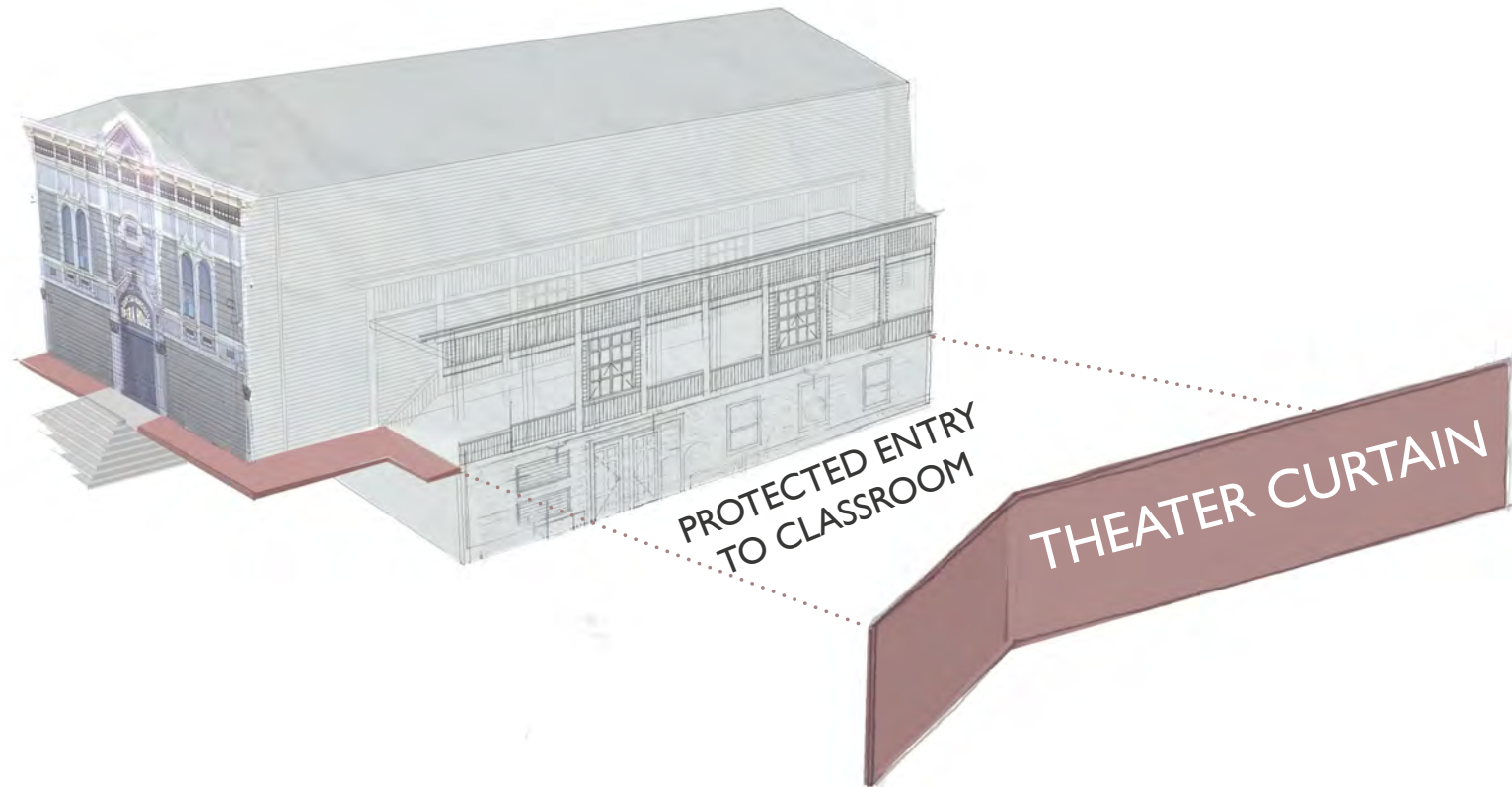
SITE ZONING AND DESIGN ELEMENTS



1. MAIN ENTRY



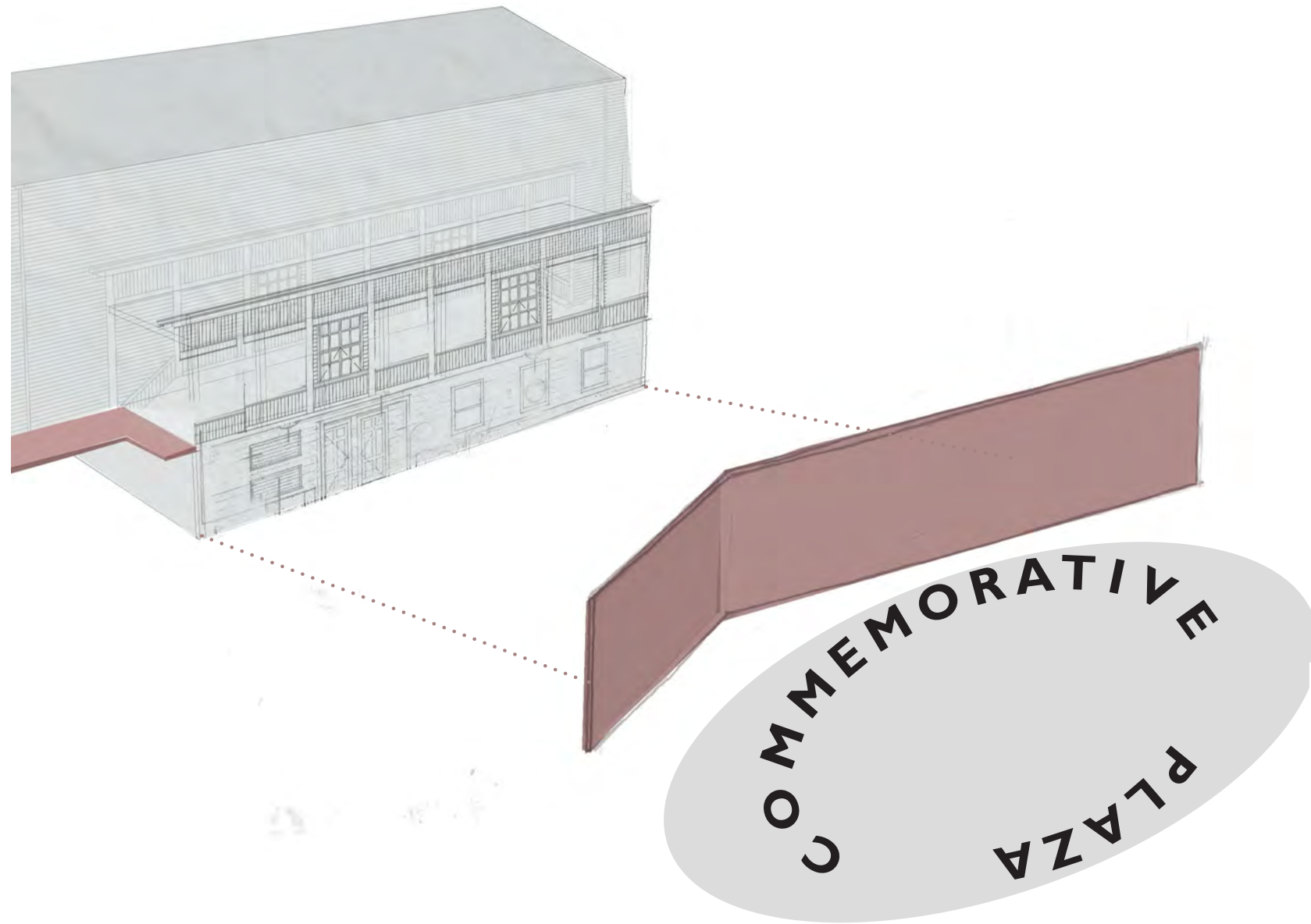
2. NEW SITE EDGE ALONG 3RD STREET



Ruth Williams Memorial Theatre
BAYVIEW OPERA HOUSE

CONCEPT DIAGRAM

COMMEMORATIVE PLAZA



Ruth Williams Memorial Theatre
BAYVIEW OPERA HOUSE

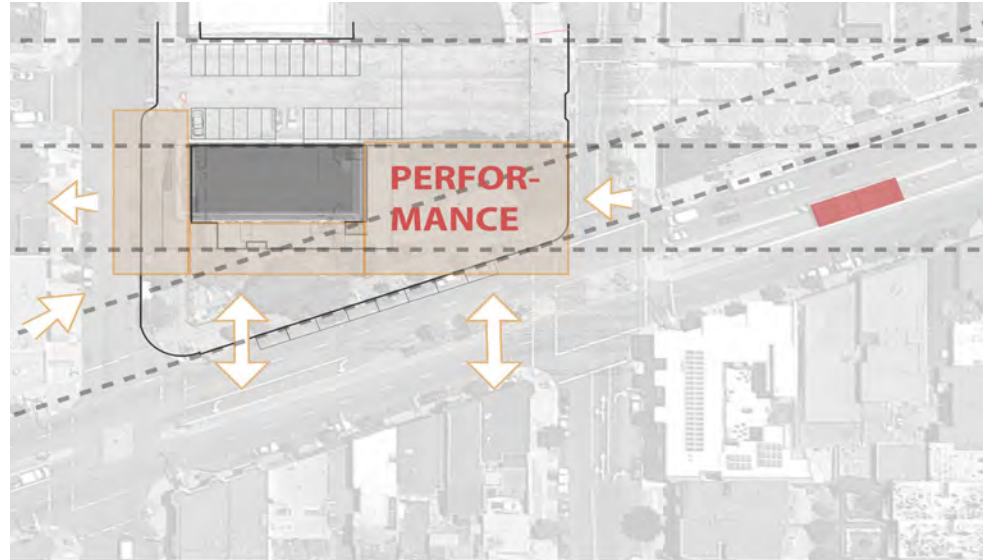


Corner of Third and Newcomb

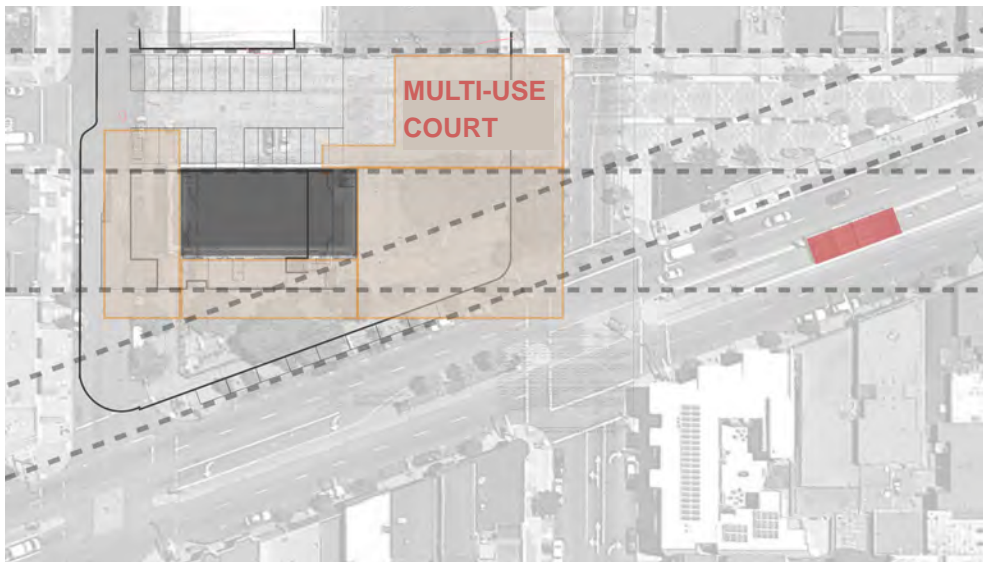
TOM ELIOT FISCH / KnappArchitects with HOOD

CONCEPT DIAGRAM

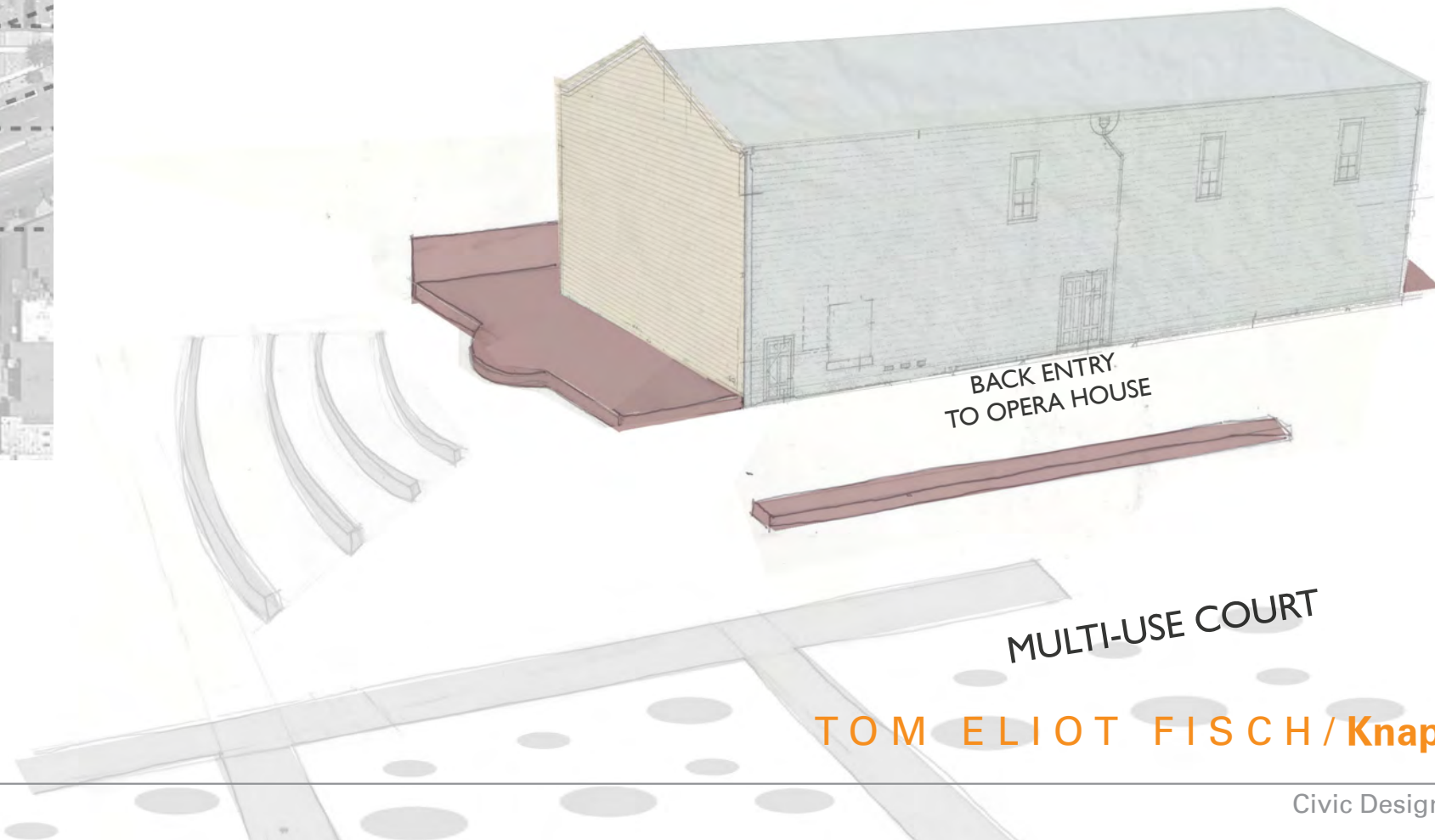
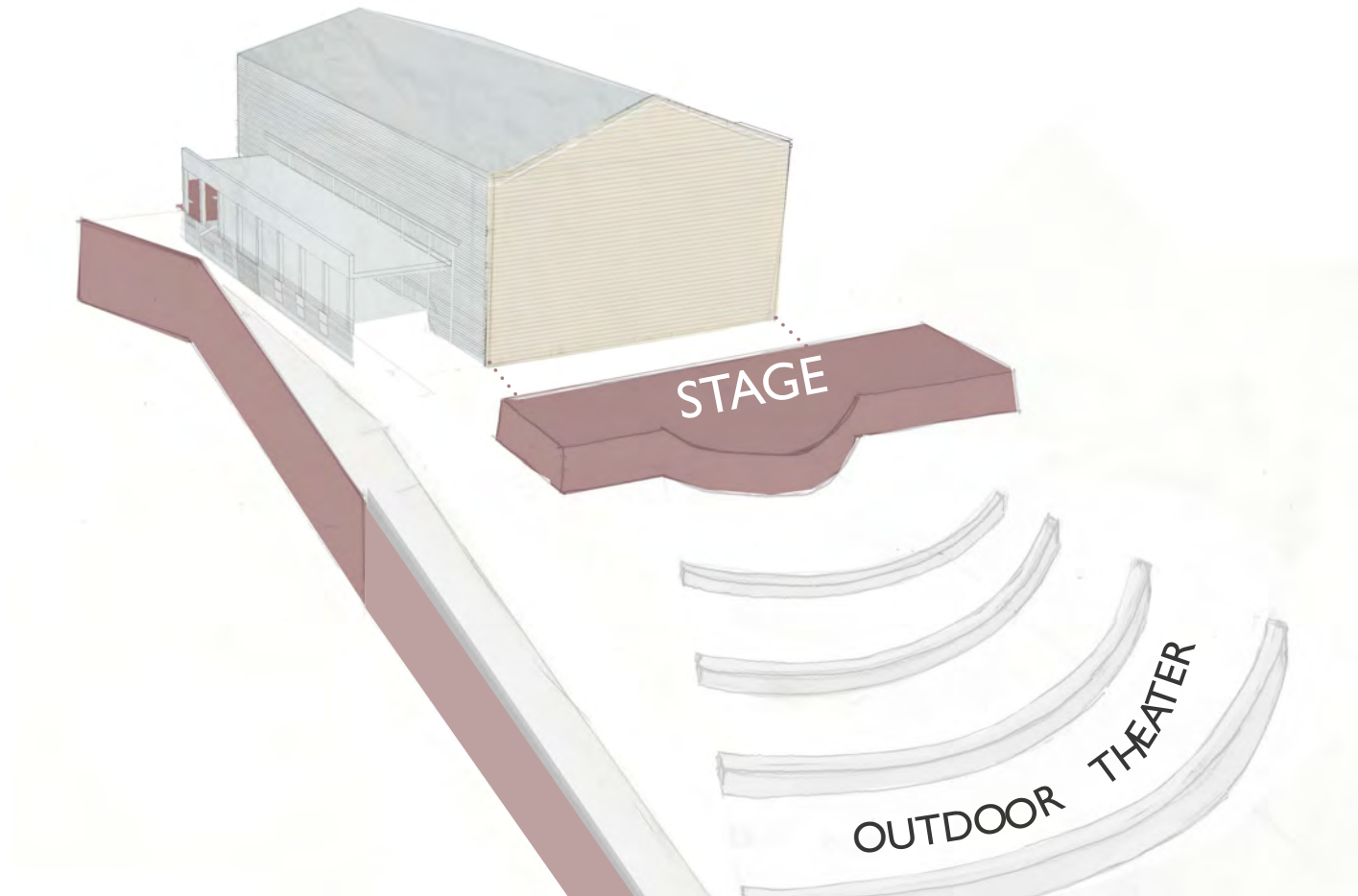
SITE ZONING AND DESIGN ELEMENTS



3. PERFORMANCE



3. MULTI - USE COURT



Ruth Williams Memorial Theatre
BAYVIEW OPERA HOUSE

TOM ELIOT FISCH / KnappArchitects with HOOD

DESIGN INSPIRATION

OLD JUXTAPOSED TO NEW



Carlo Scarpa - Castelvecchio
(Verona, Italy)



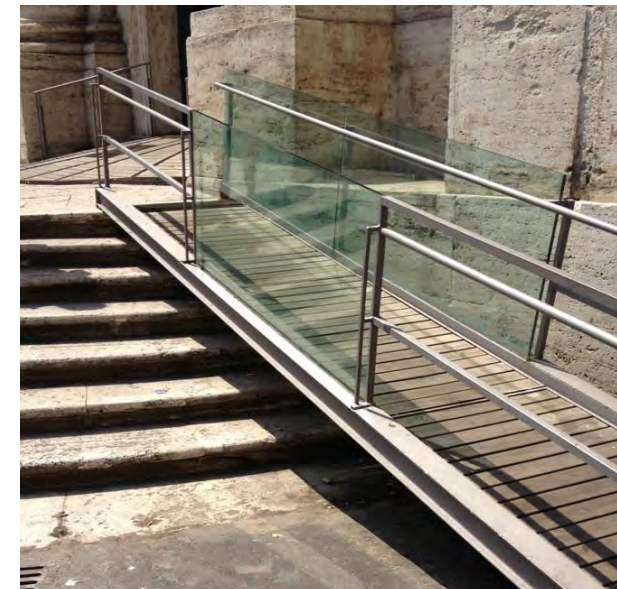
Palace of the Legion of Honor
(San Francisco, CA)



Winding House
(New Tredegar, United Kingdom)



(Rome, Italy)



Bay View Opera House - local geology
(San Francisco, CA)

Ruth Williams Memorial Theatre

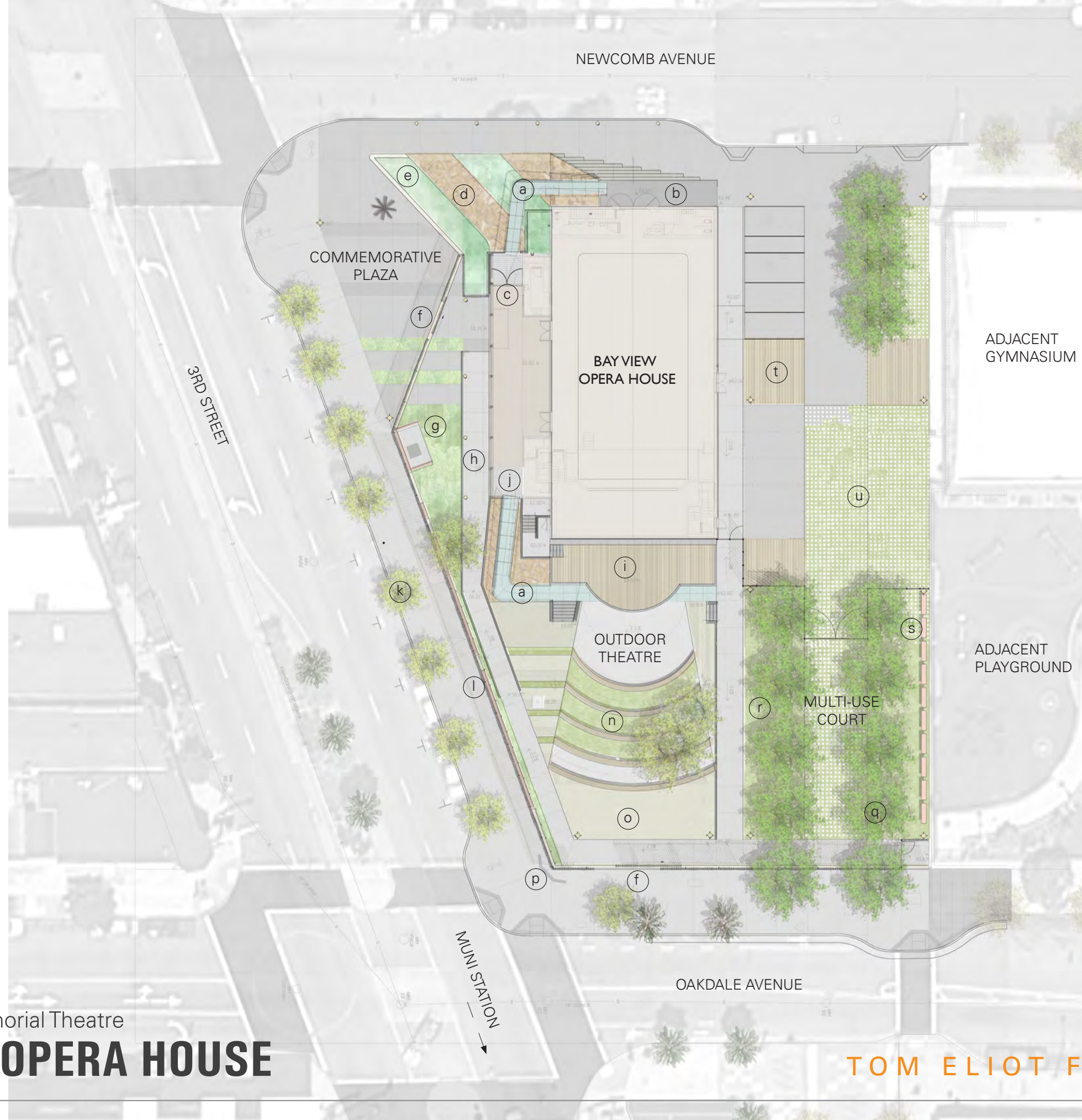
BAYVIEW OPERA HOUSE

TOM ELIOT FISCH / KnappArchitects with HOOD

SITE DESIGN

SITE PLAN
 SCALE: 1/32"=1'-0"
 0' 16' 32'

Ruth Williams Memorial Theatre
BAYVIEW OPERA HOUSE



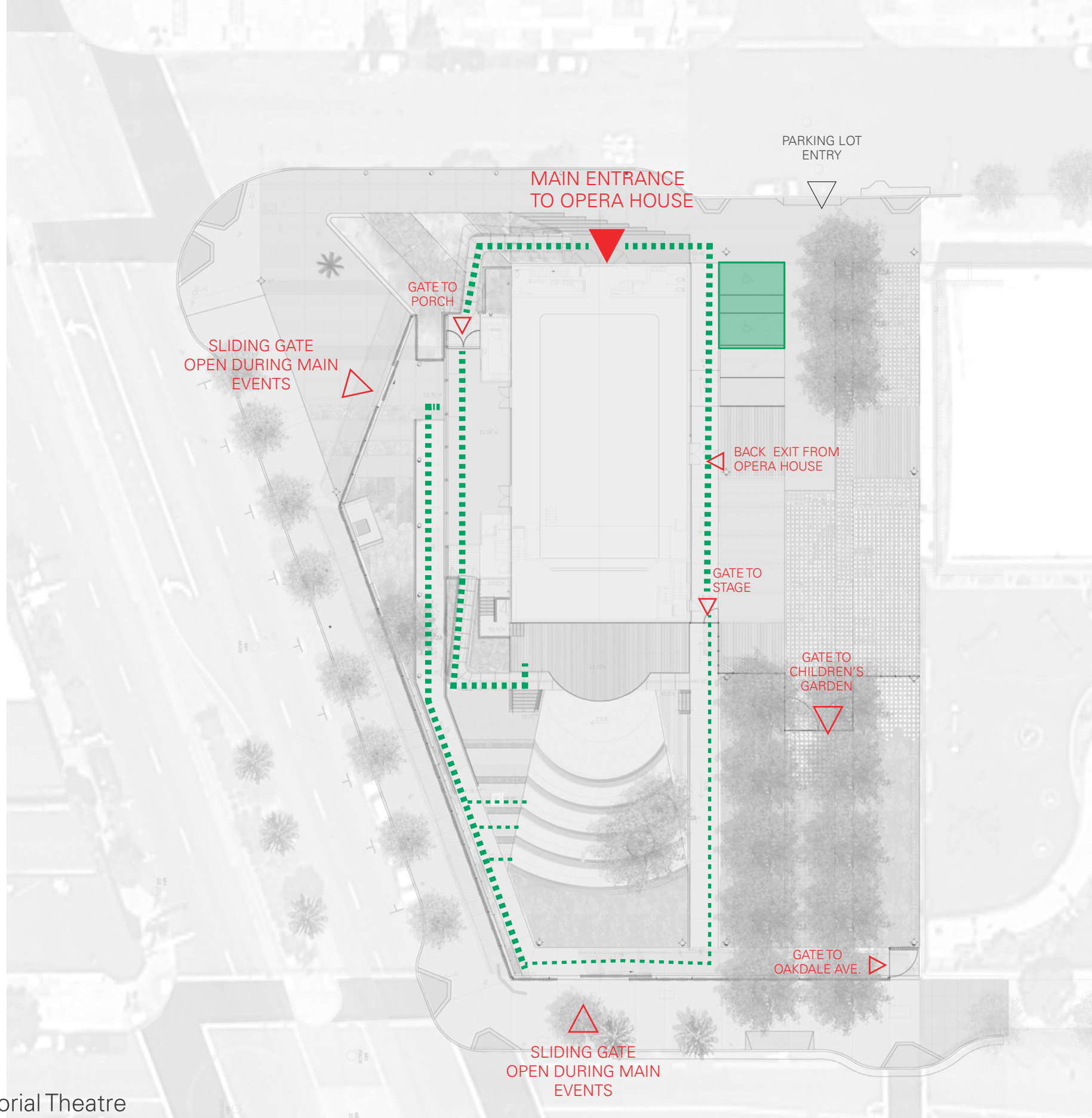
LEGEND: DESIGN ELEMENTS

- (a) ELEVATED GLASS WALKWAY
- (b) NEW CONCRETE STAIRS TO MAIN ENTRY
- (c) NEW PORCH GATE
- (d) BOULDERS
- (e) SLOPED PLANTING
- (f) SLIDING GATE
- (g) PLANTING GROUNDCOVER AND LOW SHRUBS
- (h) CONCRETE WALK
- (i) OUTDOOR WOOD STAGE
- (j) EXTENDED PORCH LANDING, METAL GRATE
- (k) NEW STREET TREES
- (l) THEATRE CURTAIN
- (m) CONCRETE PAVING
- (n) THEATRE SEATING
- (o) DECOMPOSED GRANITE
- (p) MARQUEE / SIGNAGE
- (q) NEW TREE CANOPY
- (r) LAWN
- (s) EXISTING MUNI BENCHES
- (t) WOODEN DECK
- (u) GRASSCRETE

TOM ELIOT FISCH / KnappArchitects with HOOD

CIRCULATION

SITE ACCESSIBILITY



PLAN DIAGRAM

SCALE: 1/32"=1'-0"

0' 16' 32'



Ruth Williams Memorial Theatre

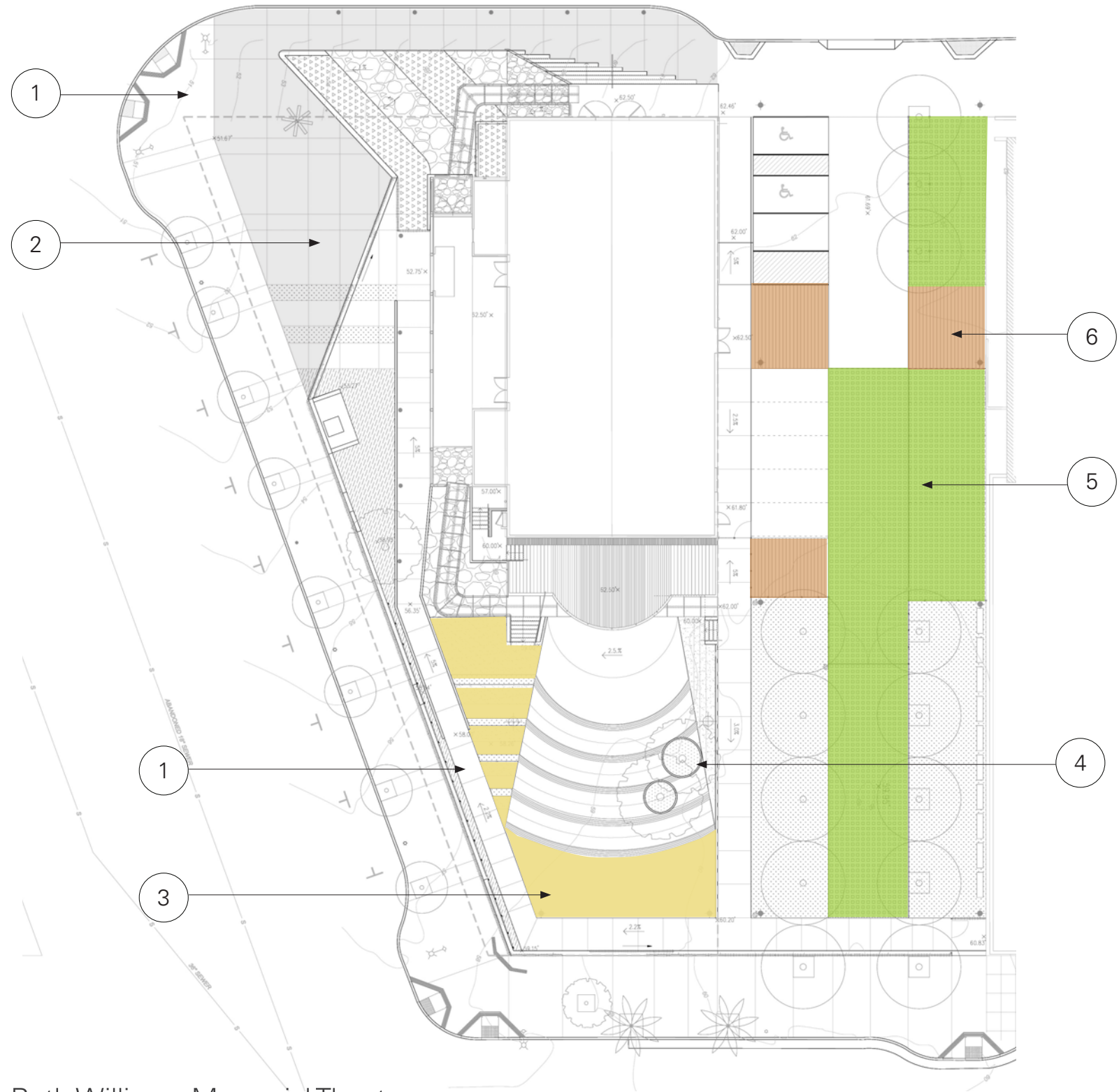
BAYVIEW OPERA HOUSE

-  ADA PARKING SPACES
-  ADA ACCESSIBILITY

TOM ELIOT FISCH / KnappArchitects with HOOD

PAVING PLAN

MATERIALS



1 CONCRETE PAVING



4 STONE



2 COLORED CONCRETE PAVING



5 GRASSCRETE



3 DECOMPOSED GRANITE



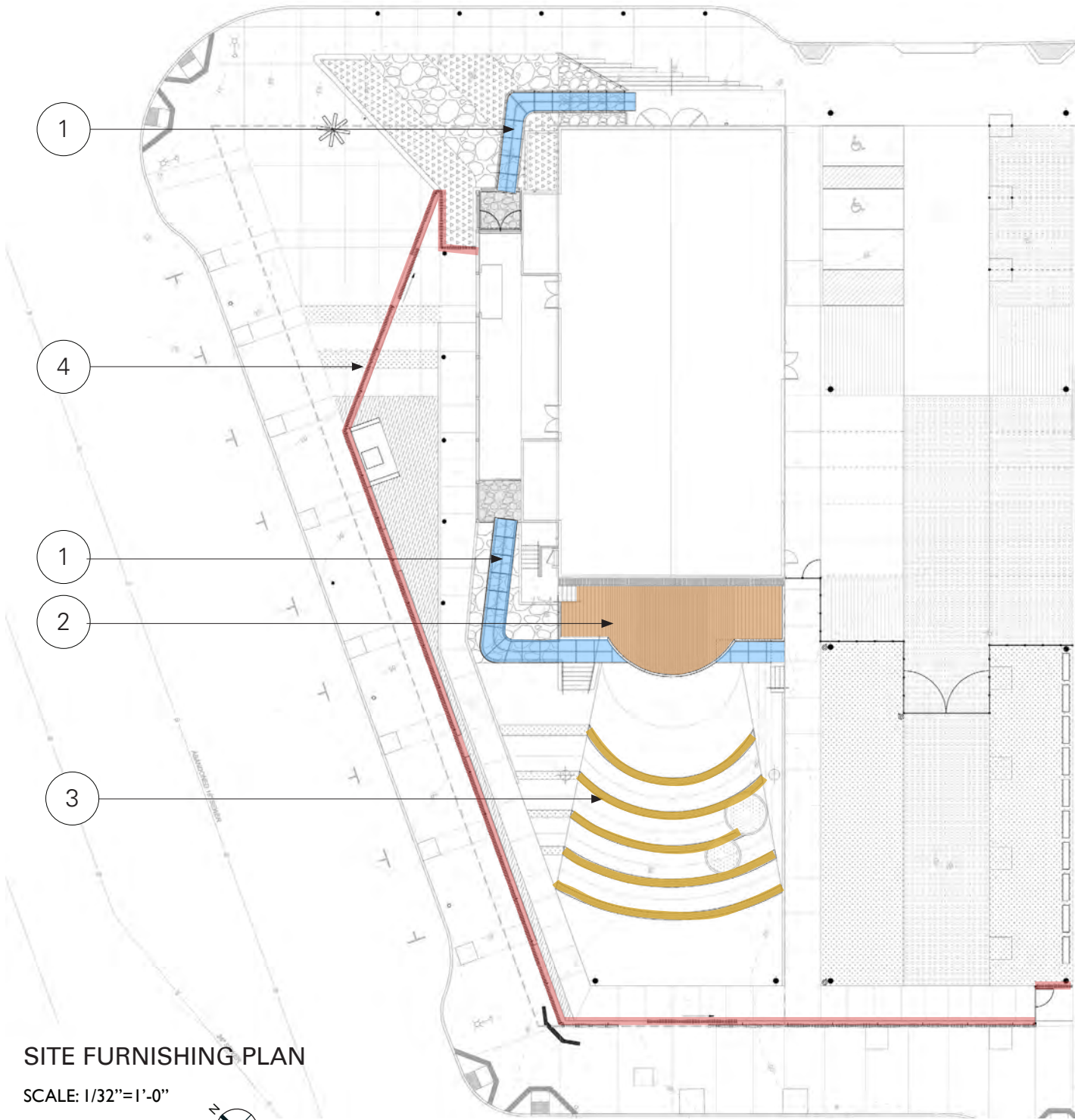
6 WOOD DECKS

Ruth Williams Memorial Theatre
BAYVIEW OPERA HOUSE

TOM ELIOT FISCH / KnappArchitects with HOOD

SITE FURNISHING

WALKWAY, STAGE AND THEATRE SEATING



SITE FURNISHING PLAN

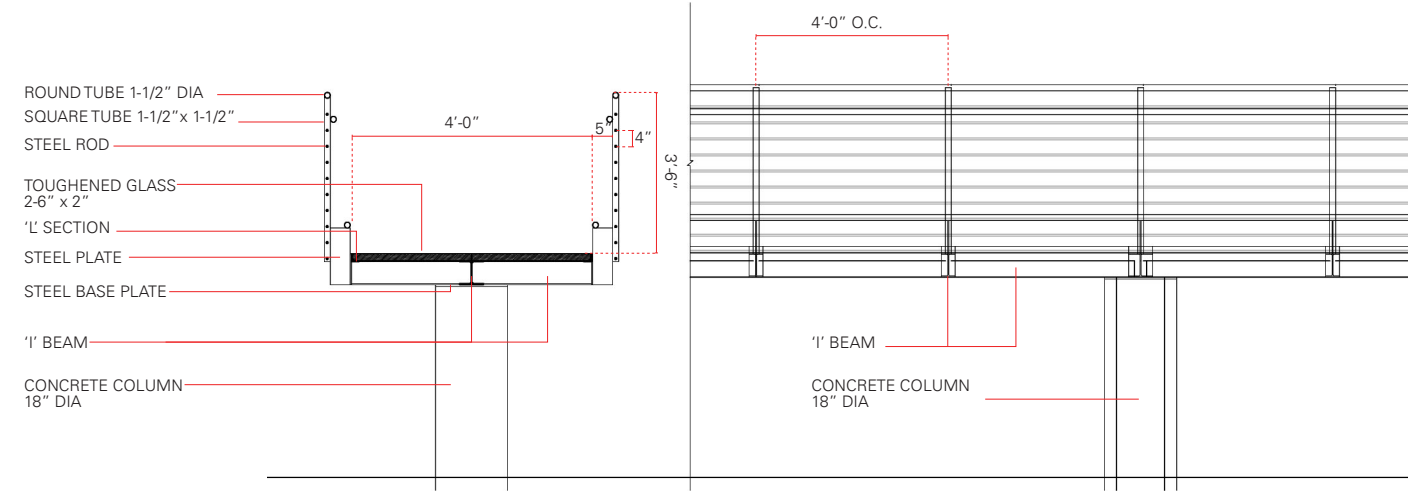
SCALE: 1/32" = 1'-0"

0' 16' 32'

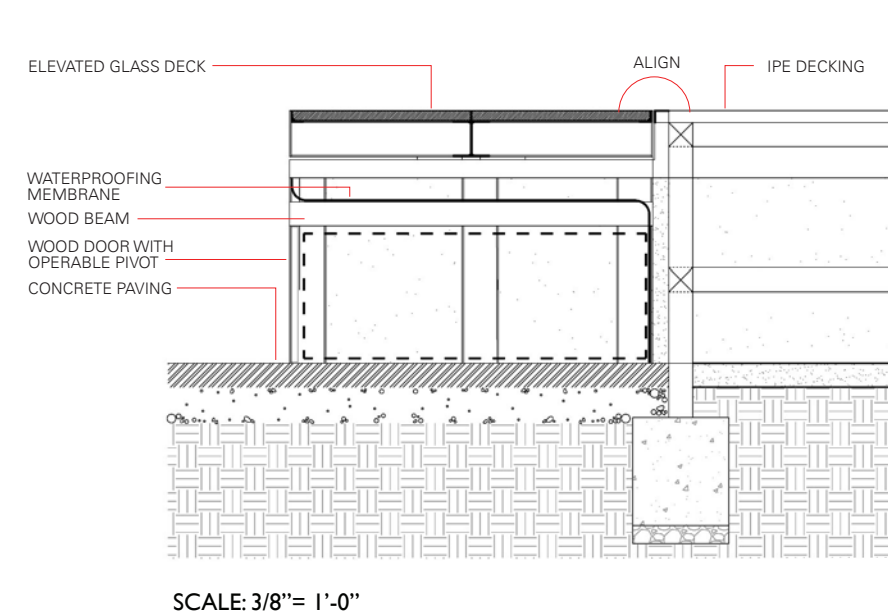


Ruth Williams Memorial Theatre

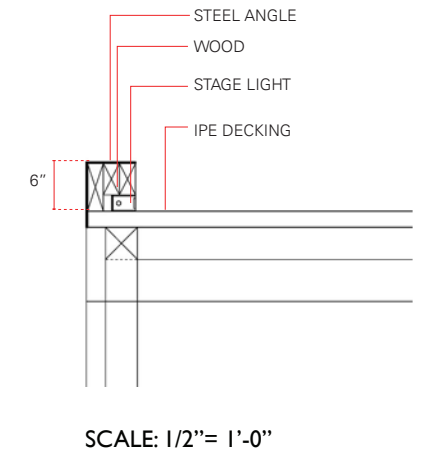
BAYVIEW OPERA HOUSE



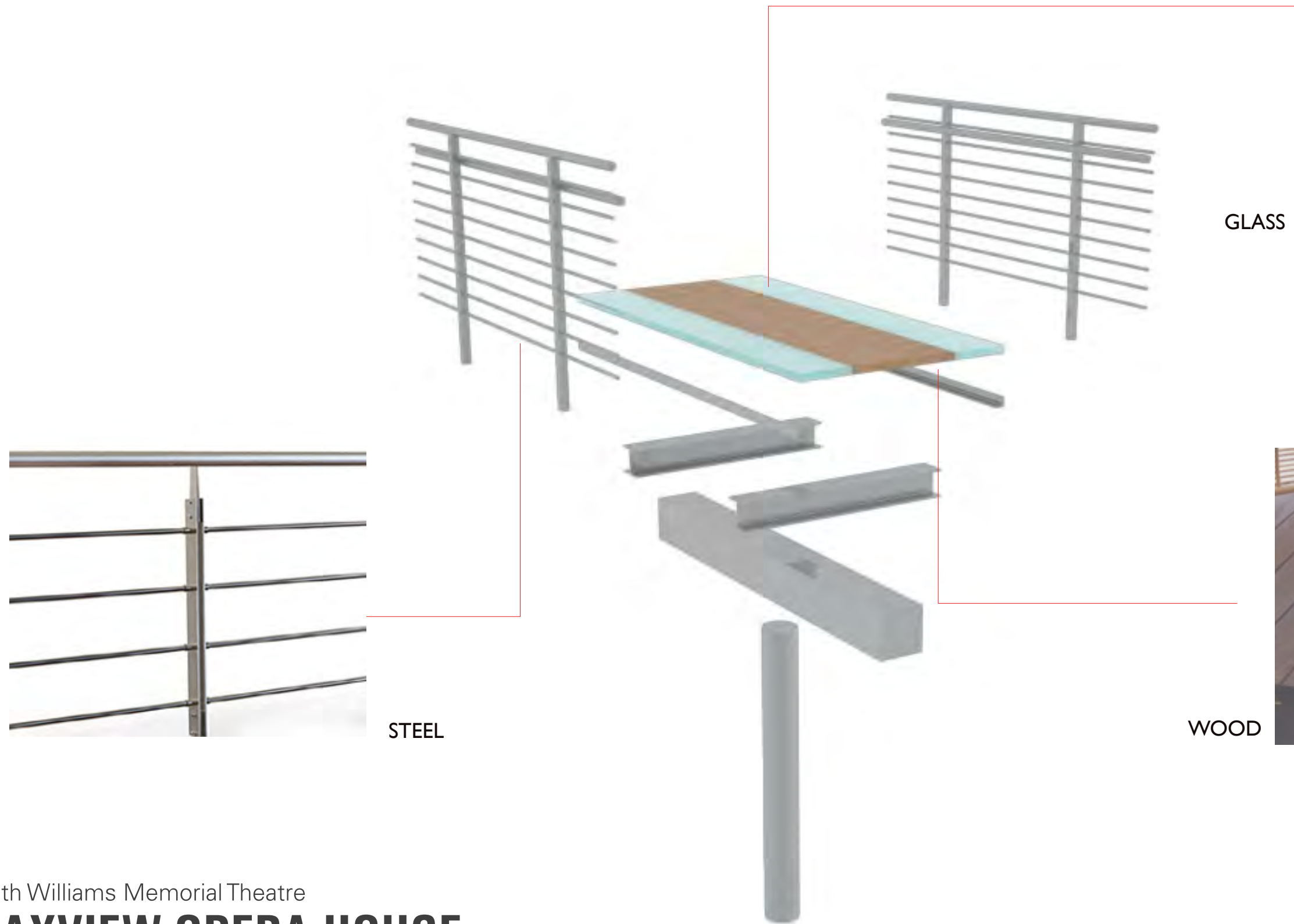
1 ELEVATED GLASS WALKWAY
SCALE: 1/4" = 1'-0"



2 WOOD STAGE
SCALE: VARIES



SITE FURNISHING - WALKWAY DETAIL DEVELOPMENT



GLASS



STEEL

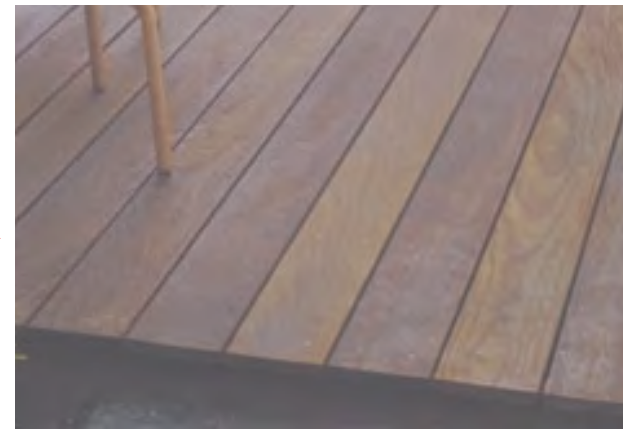
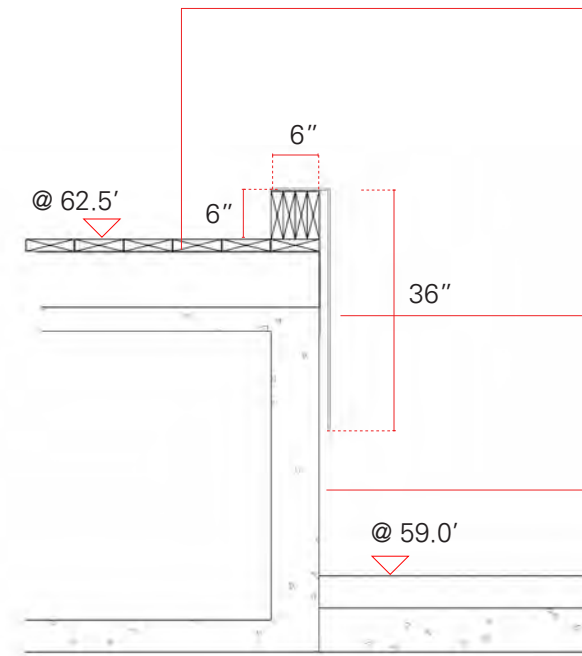
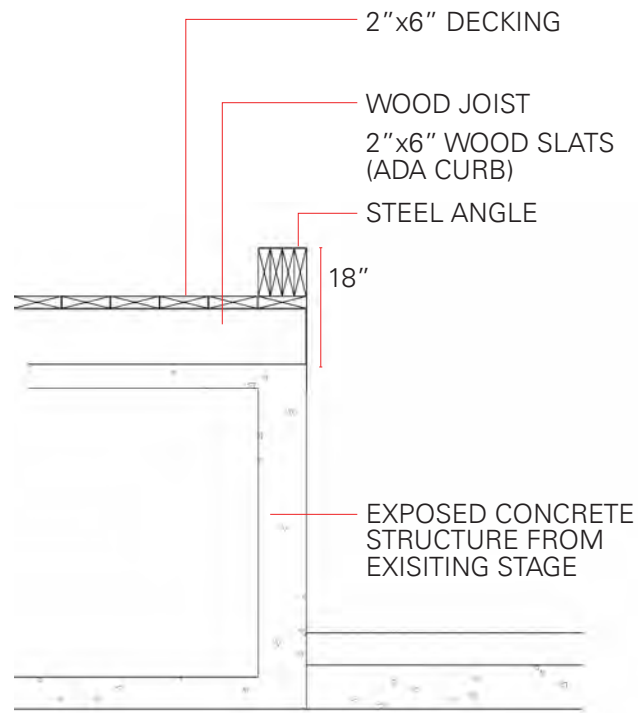


WOOD

Ruth Williams Memorial Theatre
BAYVIEW OPERA HOUSE

TOM ELIOT FISCH / KnappArchitects with HOOD

SITE FURNISHING - STAGE DETAIL DEVELOPMENT



WOOD

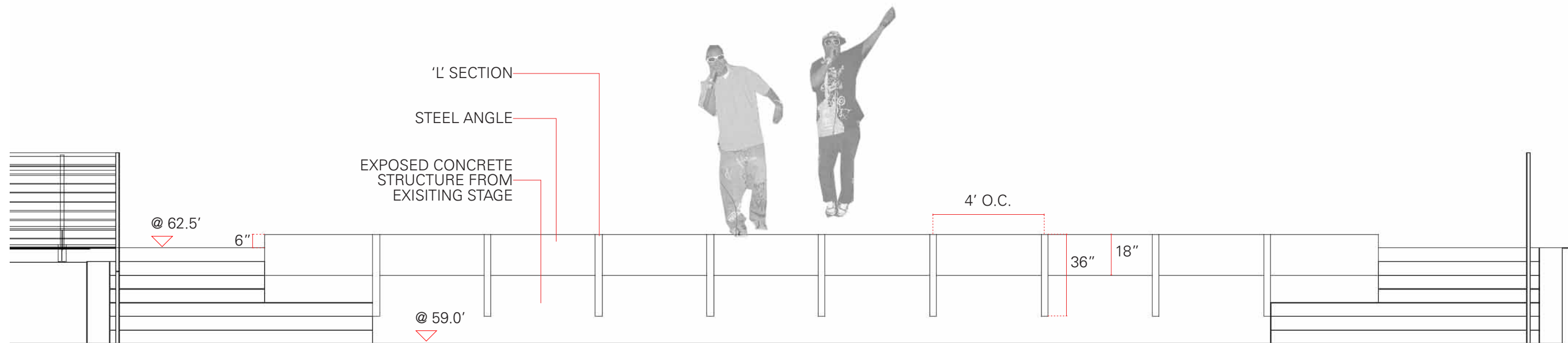


STEEL



CONCRETE SANDBLASTED

STAGE SECTION
SCALE: 3/8"=1'-0"

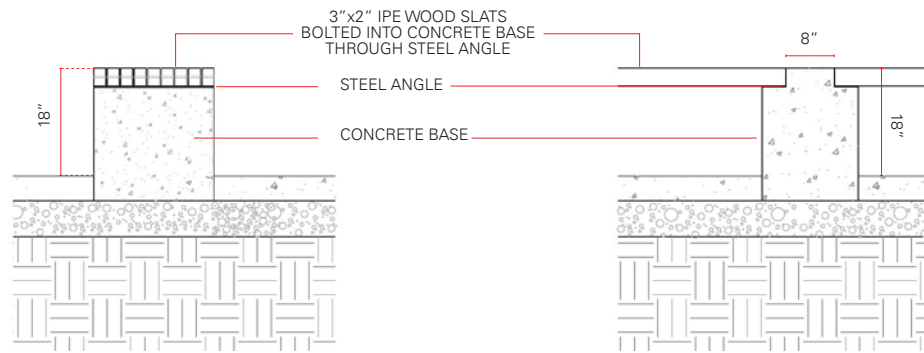


Ruth Williams Memorial Theatre
BAYVIEW OPERA HOUSE

TOM ELIOT FISCH / KnappArchitects with HOOD

SITE FURNISHING

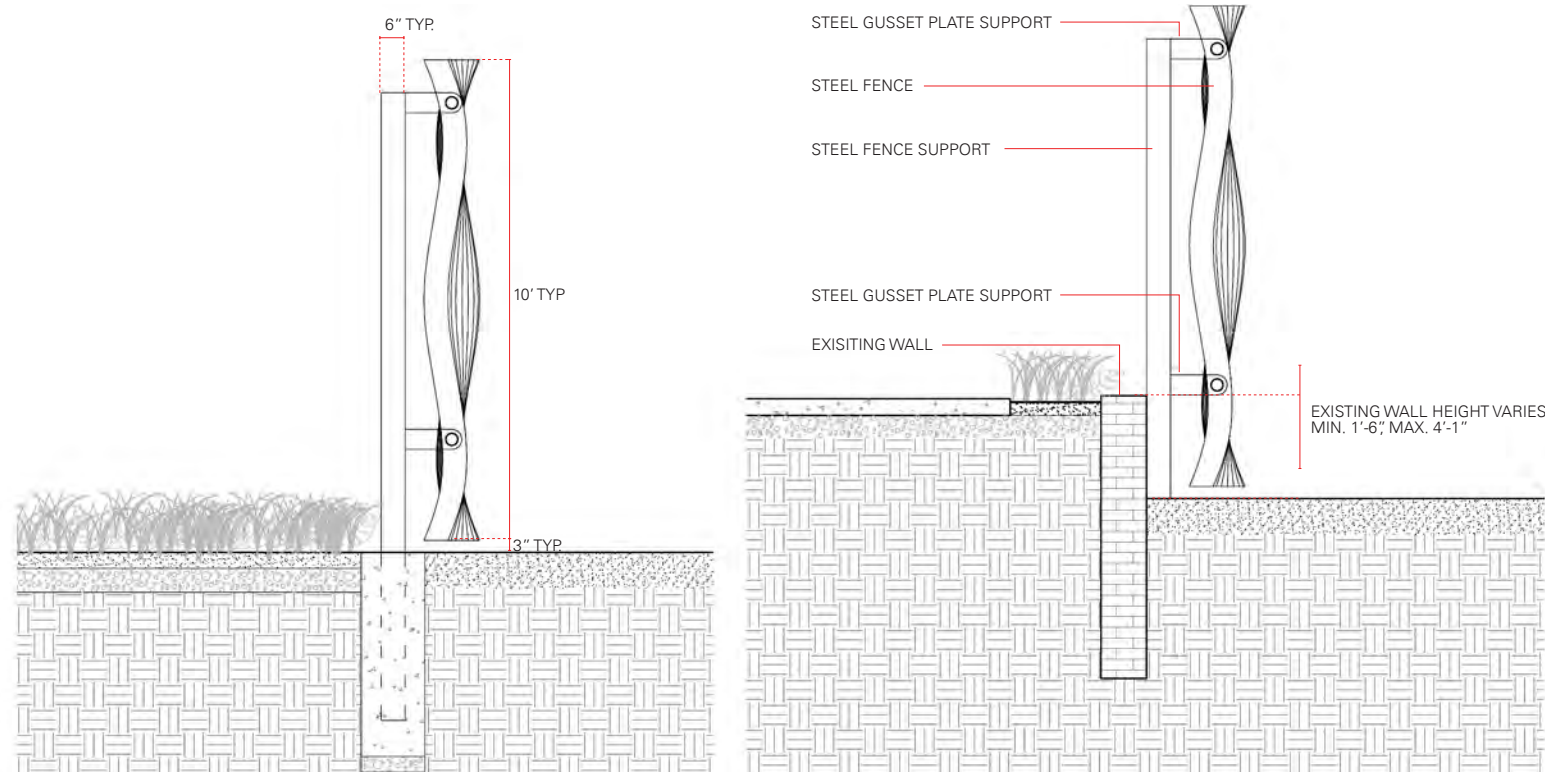
THEATRE SEATING, THEATRE CURTAIN FENCE



3

THEATRE SEATING option 1

SCALE: 3/8"=1'-0"



4

THEATRE CURTAIN

SCALE: 1/4"=1'-0"

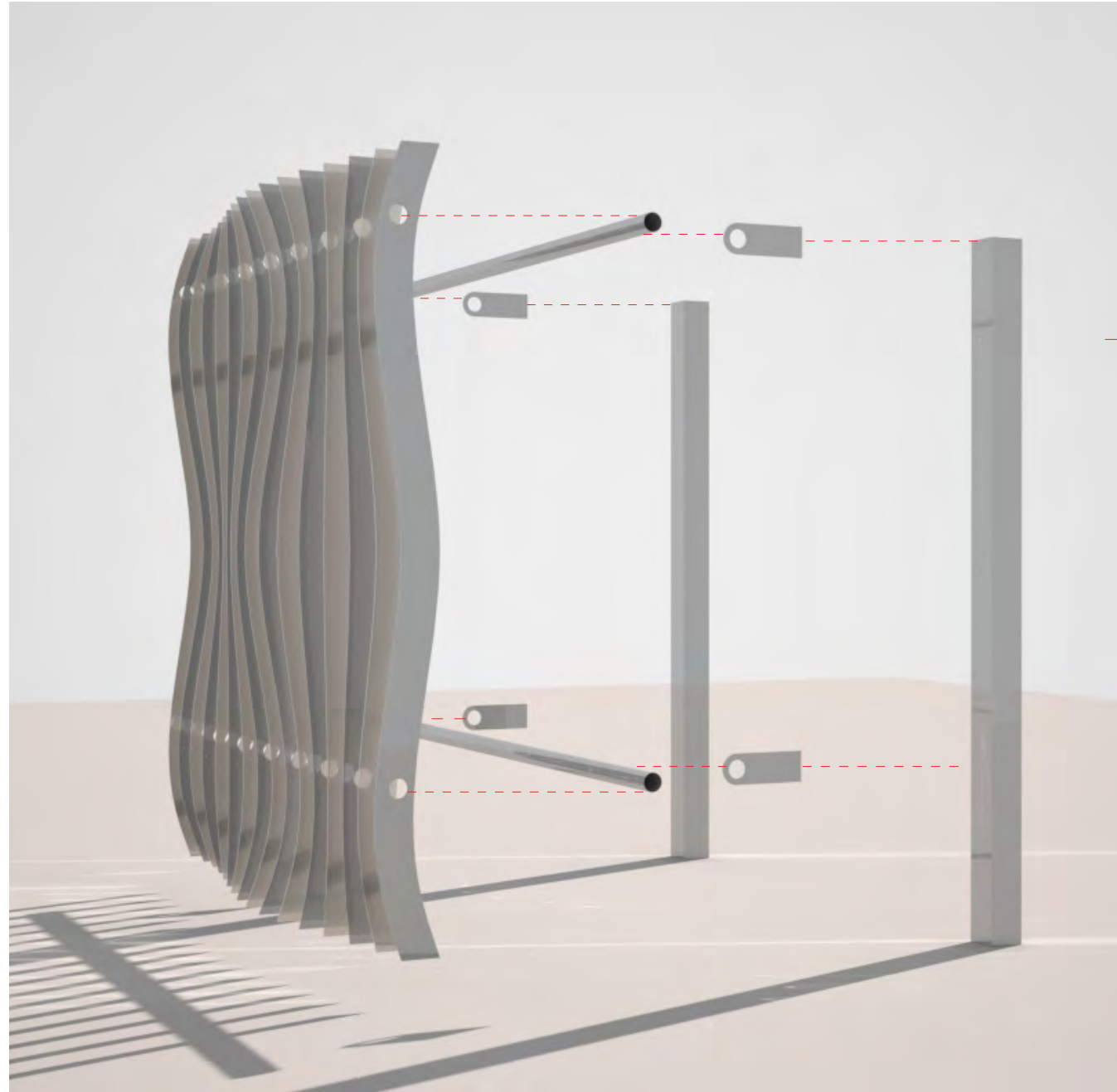


Ruth Williams Memorial Theatre

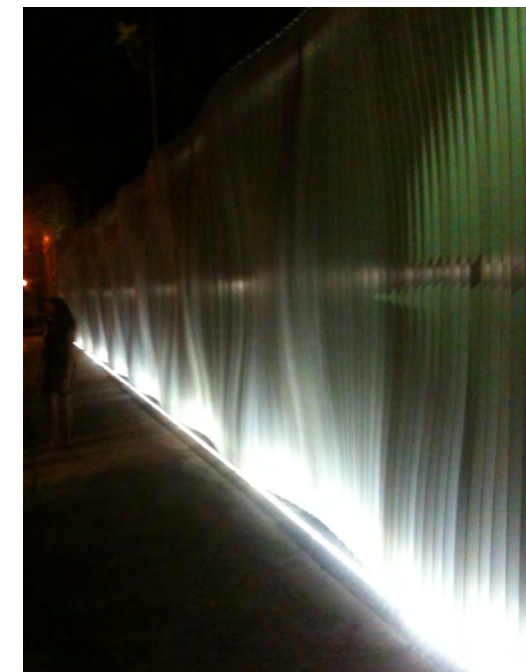
BAYVIEW OPERA HOUSE

TOM ELIOT FISCH / KnappArchitects with HOOD

SITE FURNISHING - FENCE DETAIL DEVELOPMENT



STEEL

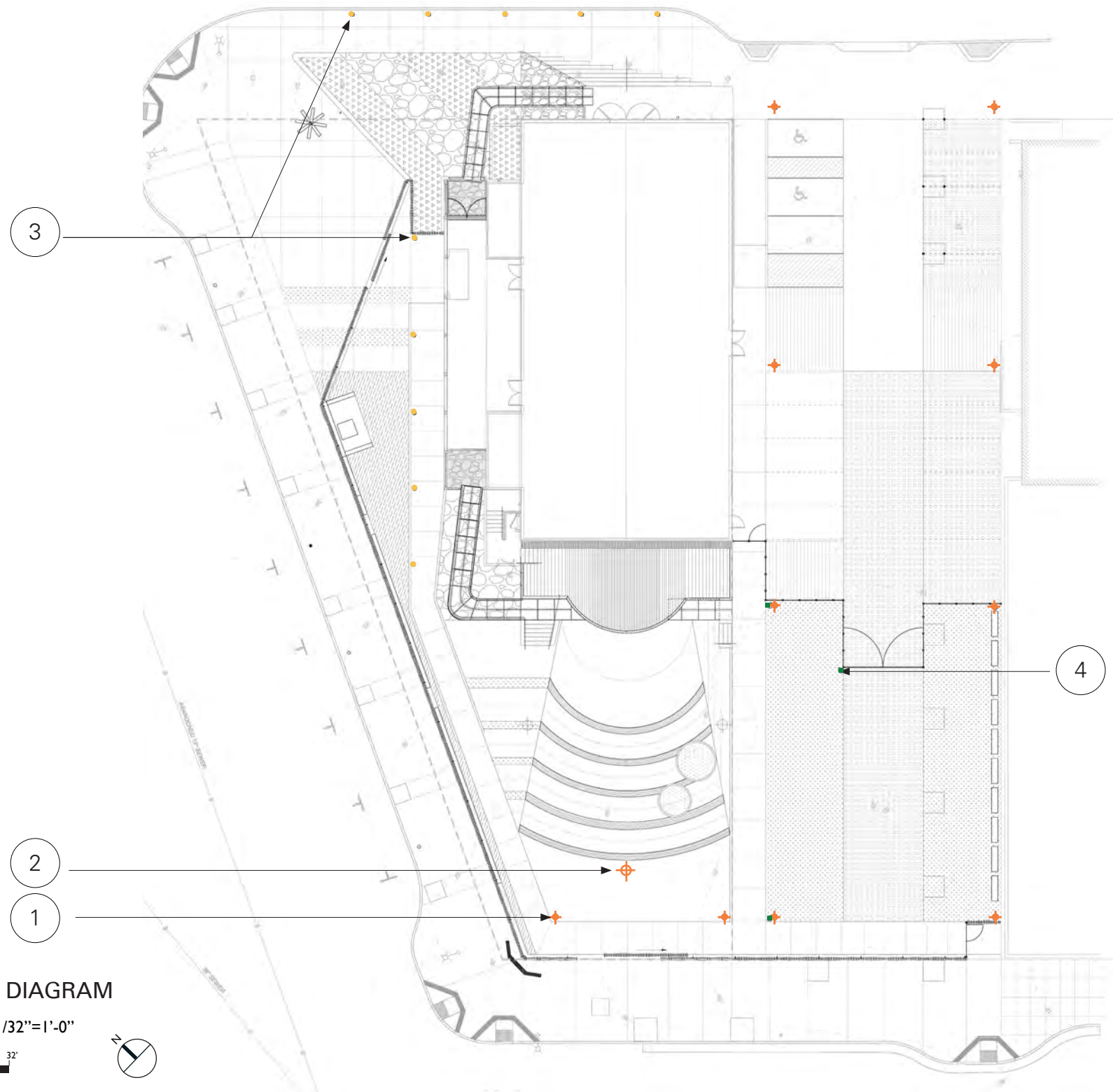


Ruth Williams Memorial Theatre
BAYVIEW OPERA HOUSE

TOM ELIOT FISCH / KnappArchitects with HOOD

SITE FURNISHING

LIGHTING: BOLLARDS, PEDESTRIAN, STAGE
LITTER RECEPTACLE



PLAN DIAGRAM

SCALE: 1/32"=1'-0"

0' 16' 32'



- ① COLUMN LIGHT
- ② THEATRE LIGHT
- ③ BOLLARD LIGHT
- ④ LITTER RECEPTACLE

Ruth Williams Memorial Theatre

BAYVIEW OPERA HOUSE

TOM ELIOT FISCH / KnappArchitects with HOOD

SITE FURNISHING

LIGHTING: BOLLARDS, PEDESTRIAN, STAGE
LITTER RECEPTACLE



1 COLUMN LIGHT
SMITH COLUMN LIGHT, LIGMAN



2 THEATRE LIGHTING
FLOOD LIGHT, BEGA



www.hessamerica.com/3630

3 BOLLARD LIGHT
FERRARA, HESS

FERRARA . Illuminating Bollard

FERRARA's understated styling and diffused illumination provides unobtrusive low-level landscape lighting. Translucent acrylic lens creates soft diffused illumination. Housing is constructed of cast aluminum and heavy aluminum plate. Fixture and heavy wall extruded aluminum shaft are finished in finely textured paint. Luminaire is available in three heights. All hardware is stainless steel. Standard color; matte silver grey metallic. Special colors available. Model FR780 features full-length lens. Listed for Wet Locations.

Model	Height	Lamp
FR900	35.4"	18 CF / 13 CF
FR500	19.7"	18 CF / 13 CF
FR780	35.4"	50 CF
FR290	11.4"	18 CF / 13 CF



www.hessamerica.com/6830

4 LITTER RECEPTACLE
SERPO, HESS

SERPO . Litter Receptacle

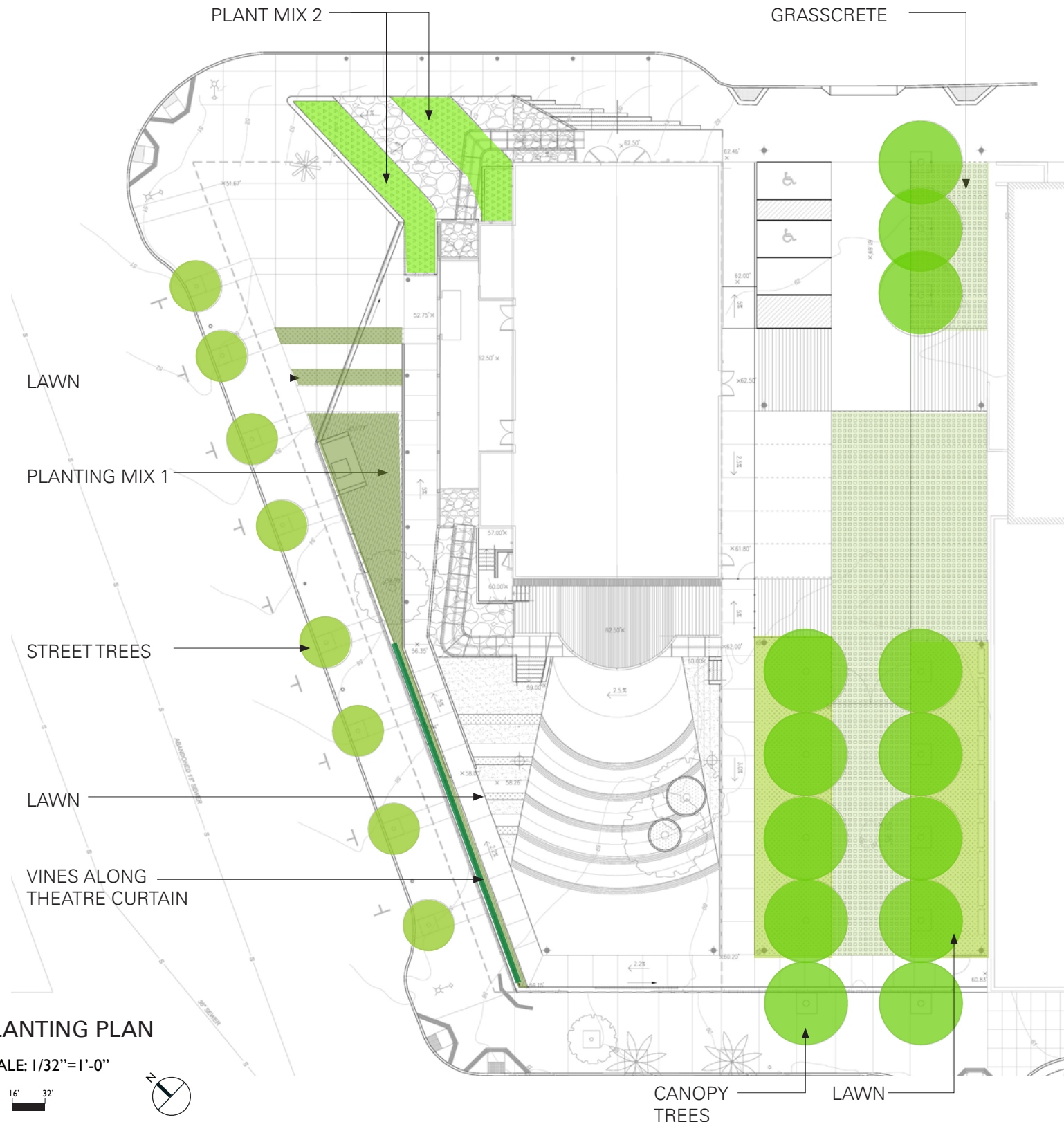
The SERPO litter receptacle integrates a natural swaying grass motif into its styling to harmonize with a variety of outdoor surroundings. The fabricated steel housing and mounting post are hot-dip galvanized for long-term corrosion protection, then finished in finely textured paint. Key-activated triangular locking mechanism allows side access to the liner for ease of emptying. Liner is available in galvanized steel or polyethylene on the smaller sizes and galvanized steel only for the largest model. Receptacle is available in three sizes to suit a variety of applications. Mounting choices include flanged model for surface installation or embedded models for direct burial into a concrete foundation. Complementary tree grates complete the product family. All hardware is stainless steel. Standard colors; matte silver grey metallic, dark grey, graphite grey or black. Special colors available.

Model	Mounting	Capacity
SP500	Flange Mount / Embedded	8.5 Gallons
SP700	Flange Mount / Embedded	11.8 Gallons
SP780	Flange Mount / Embedded	44 Gallons

Ruth Williams Memorial Theatre
BAYVIEW OPERA HOUSE

TOM ELIOT FISCH / KnappArchitects with HOOD

PLANTING PLAN



PLANTING PLAN

SCALE: 1/32"=1'-0"



Ruth Williams Memorial Theatre

BAYVIEW OPERA HOUSE



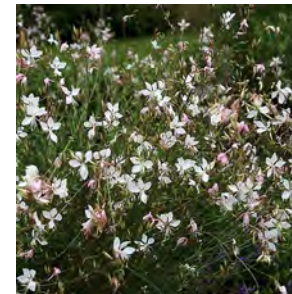
CANOPY TREE:
Acer saccharum 'Goldspire'



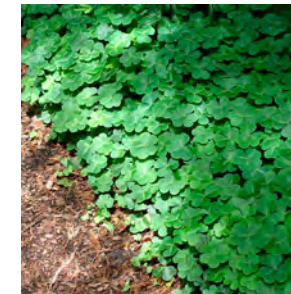
STREET TREE:
Ulmus Parviflora



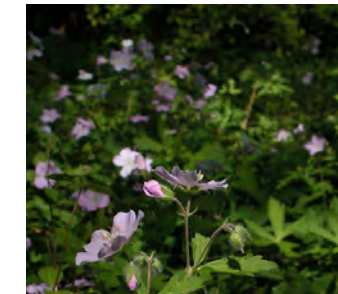
VINES
Parthenocissus tricuspidata



PLANTING MIX 1
Gaura lindheimeri



Oxalis oregana



Geranium Maculatum



Arctostaphylos hookeri



PLANTING MIX 2
Adiantum jordanii



Dryopteris erythrosora 'Brilliance'



Woodwardia fimbriata



Helxine soleirolii

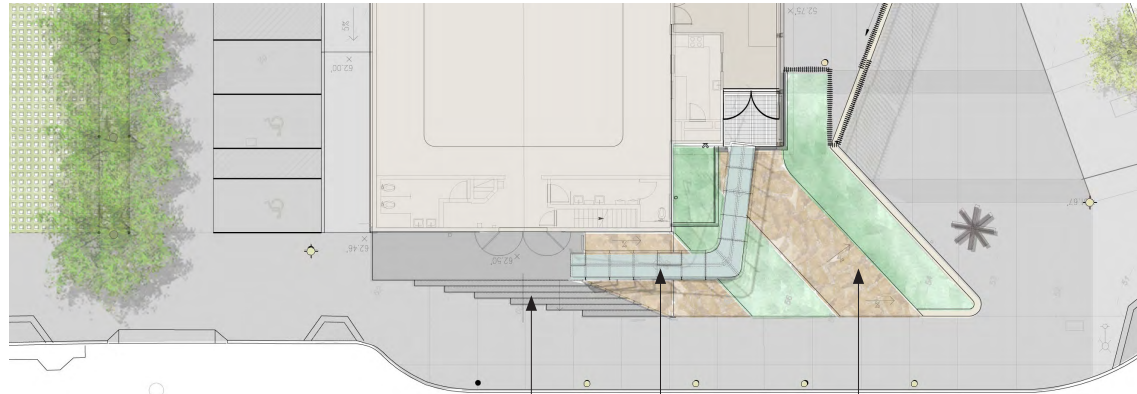


Grasscrete

TOM ELIOT FISCH / KnappArchitects with HOOD

NORTH ENTRY

ELEVATED GLASS WALKWAY



STEPS TO MAIN ENTRANCE

WALKWAY CONNECTION TO PORCH

SLOPING
LANDSCAPE

PLAN VIEW
SCALE: 1/32" = 1'-0"



0' 16' 32'



STEPS TO MAIN ENTRANCE

WALKWAY CONNECTION TO PORCH

SLOPING LANDSCAPE

3RD STREET

ELEVATION | NEWCOMB AND 3RD STREET

SCALE: 1/16" = 1'-0"

0' 8' 16'

Ruth Williams Memorial Theatre

BAYVIEW OPERA HOUSE

TOM ELIOT FISCH / KnappArchitects with HOOD

ELEVATED WALKWAY

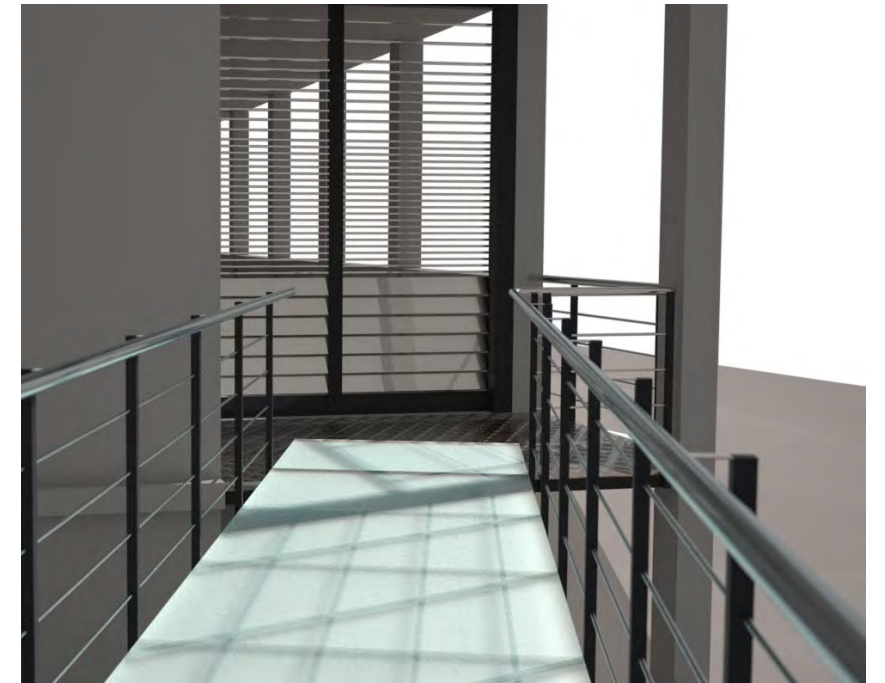
MATERIAL STUDY



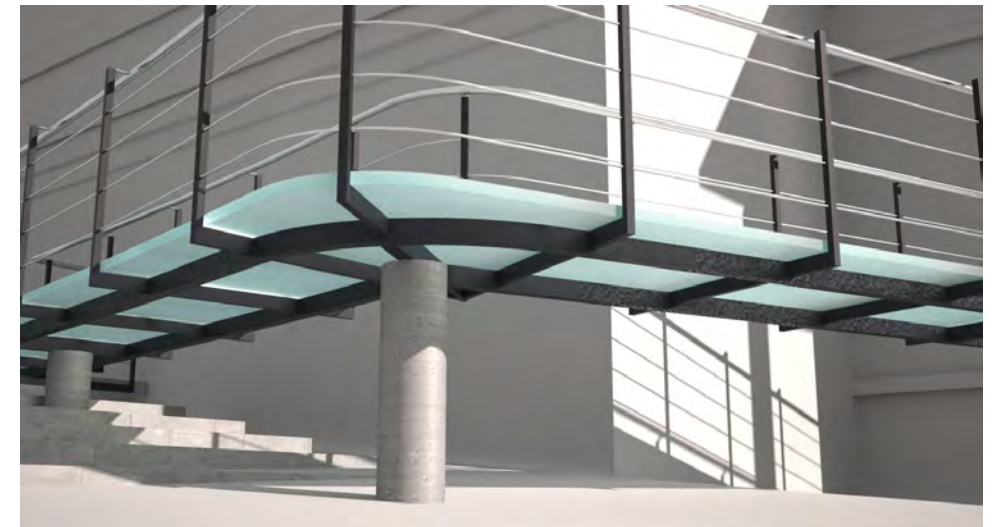
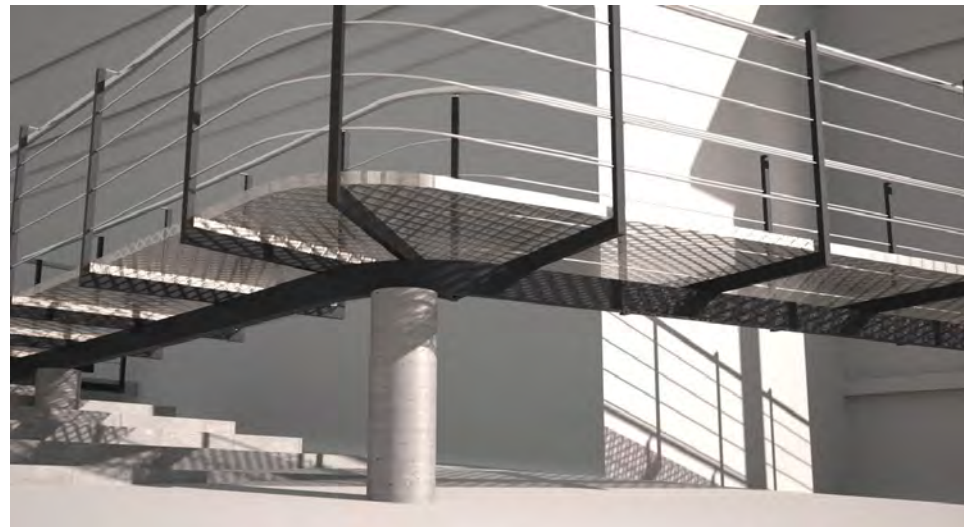
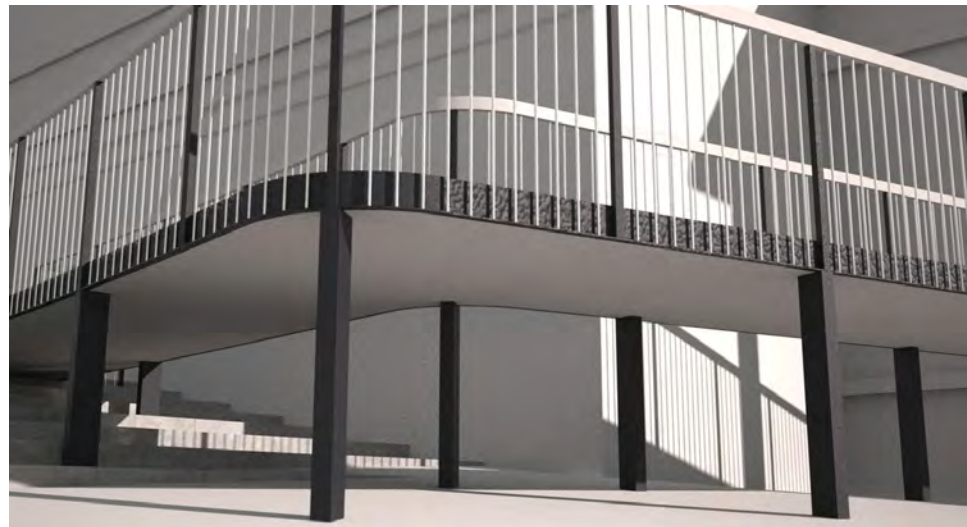
CONCRETE



METAL GRATE



GLASS



Ruth Williams Memorial Theatre
BAYVIEW OPERA HOUSE

TOM ELIOT FISCH / KnappArchitects with HOOD

ELEVATED WALKWAY

ELEVATED WALKWAY



GLASS AND WOOD SURFACE



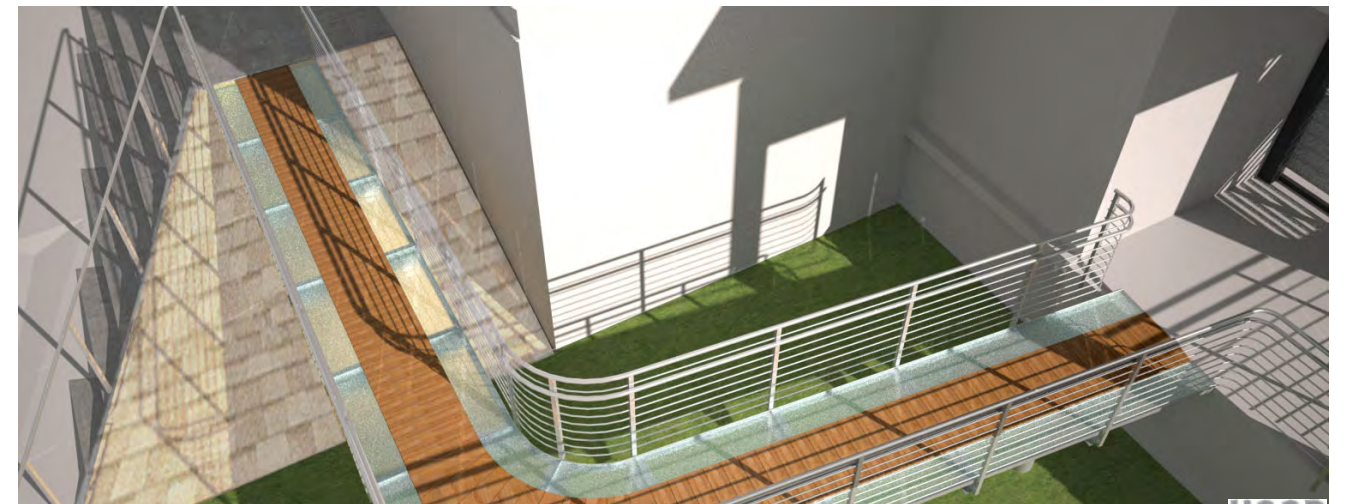
STEEL STRUCTURE

Ruth Williams Memorial Theatre

BAYVIEW OPERA HOUSE

TOM ELIOT FISCH / KnappArchitects with HOOD

PERSPECTIVE VIEW - ELEVATED WALKWAY AND BUILDING REVEAL



Ruth Williams Memorial Theatre
BAYVIEW OPERA HOUSE

TOM ELIOT FISCH / KnappArchitects with HOOD

AERIAL VIEW - CORNER NEWCOMB AND 3RD STREET



Ruth Williams Memorial Theatre
BAYVIEW OPERA HOUSE

TOM ELIOT FISCH / KnappArchitects with HOOD

PERSPECTIVE VIEW - MAIN ENTRY

CORNER NEWCOMB AVE. AND
3RD STREET LOOKING TOWARDS
MAIN ENTRY



Ruth Williams Memorial Theatre

BAYVIEW OPERA HOUSE

TOM ELIOT FISCH / KnappArchitects with HOOD

PERSPECTIVE VIEW - ARRIVING FROM PARKING LOT



Ruth Williams Memorial Theatre

BAYVIEW OPERA HOUSE

TOM ELIOT FISCH / KnappArchitects with HOOD

SITE ELEVATIONS



WEST ELEVATION

SCALE: 1/16" = 1'-0"
 0' 8' 16'



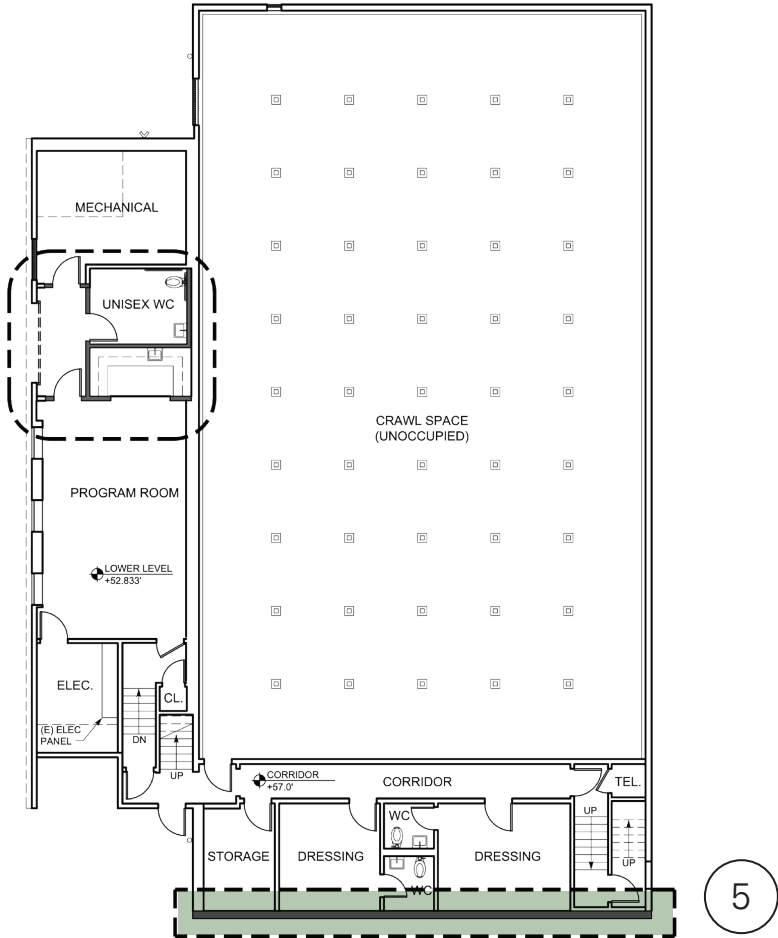
SOUTH ELEVATION

SCALE: 1/16" = 1'-0"
 0' 8' 16'

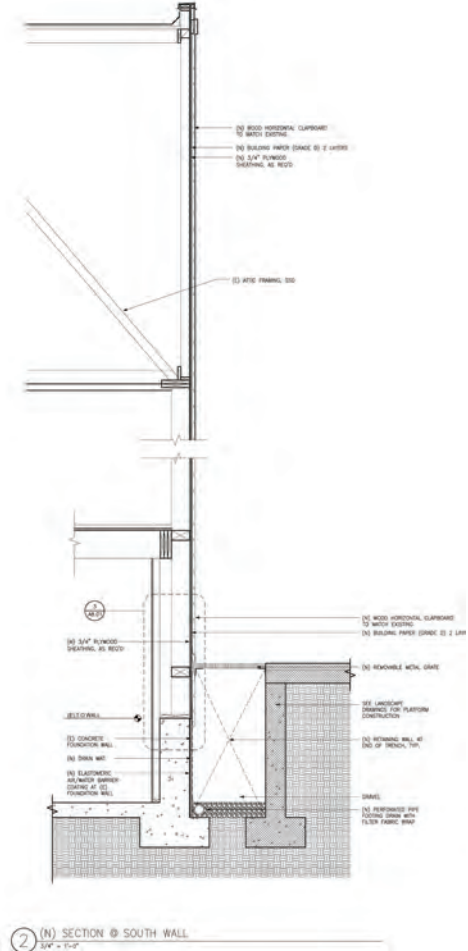
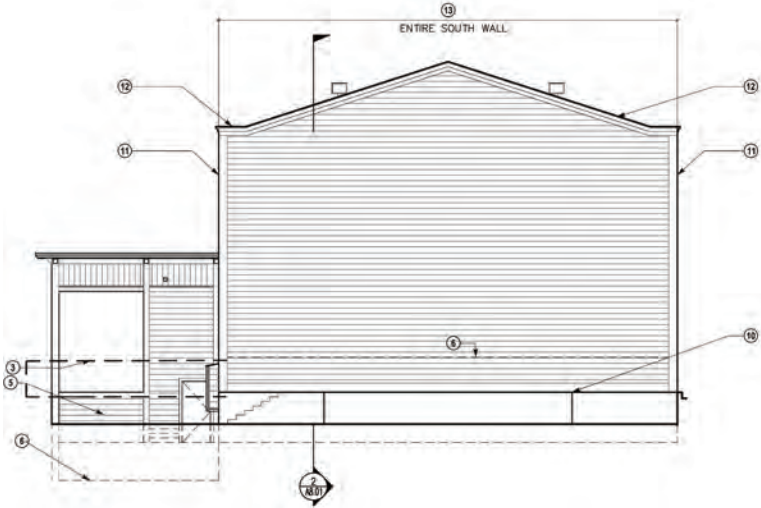
Ruth Williams Memorial Theatre
BAYVIEW OPERA HOUSE

TOM ELIOT FISCH / KnappArchitects with HOOD

SOUTH WALL WATERPROOFING



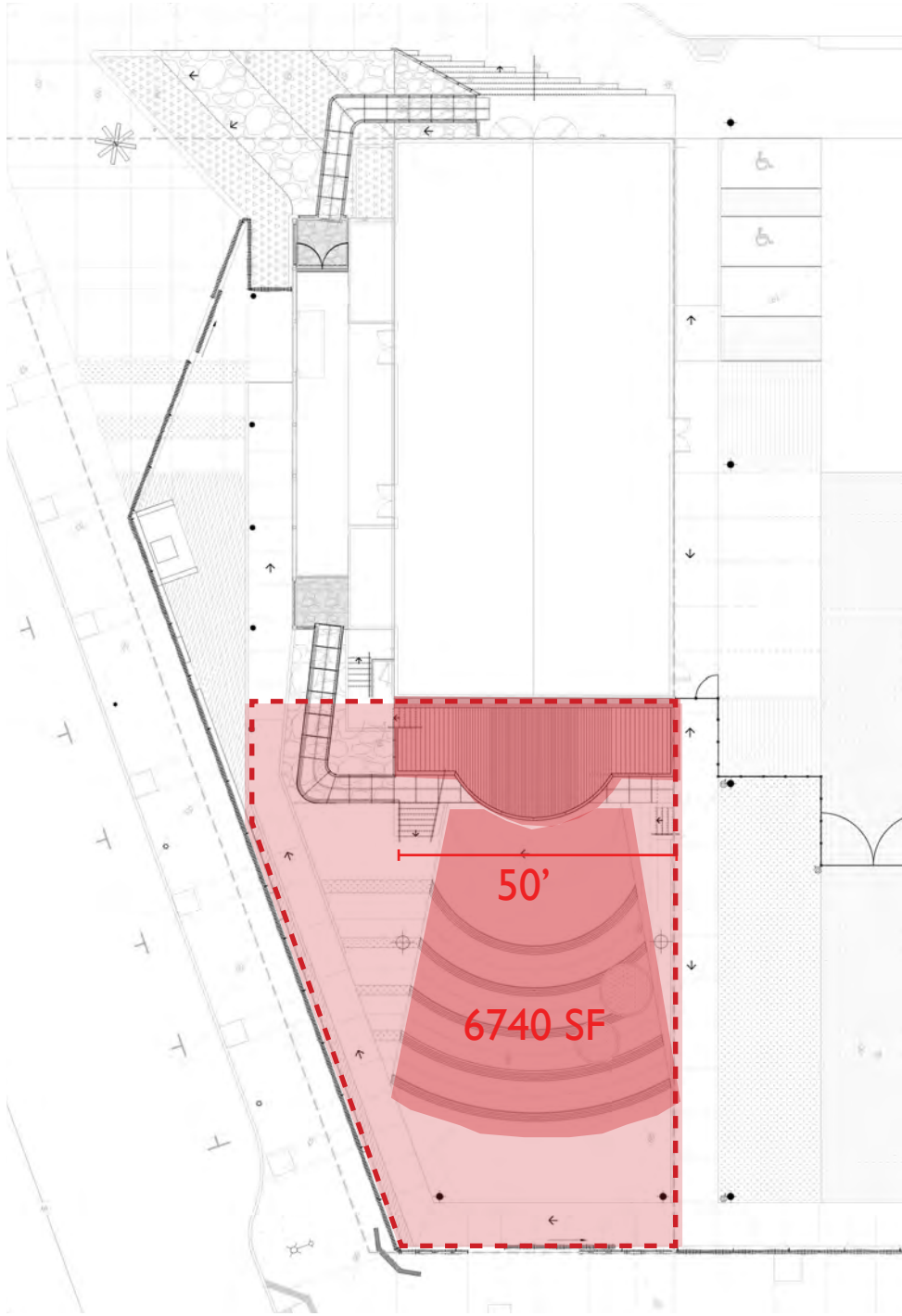
5 South Wall Waterproofing



Ruth Williams Memorial Theatre
BAYVIEW OPERA HOUSE

TOM ELIOT FISCH / KnappArchitects with HOOD

THEATRE SCALE STUDY



BAY VIEW OPERA HOUSE OUTDOOR THEATRE
 Designated Seating: 145 persons
 Total number of Persons standing: 900 persons

Ruth Williams Memorial Theatre

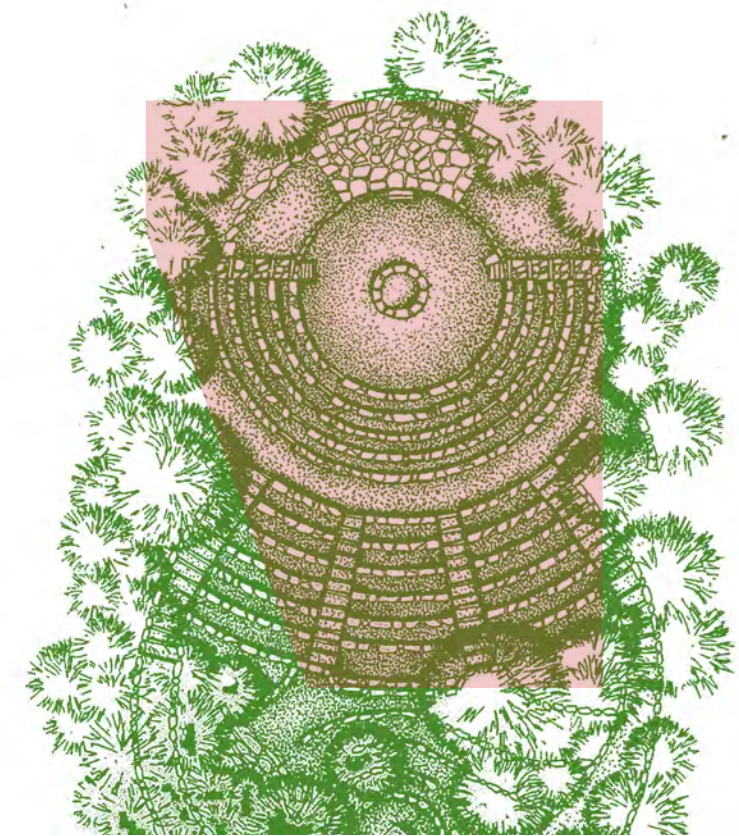
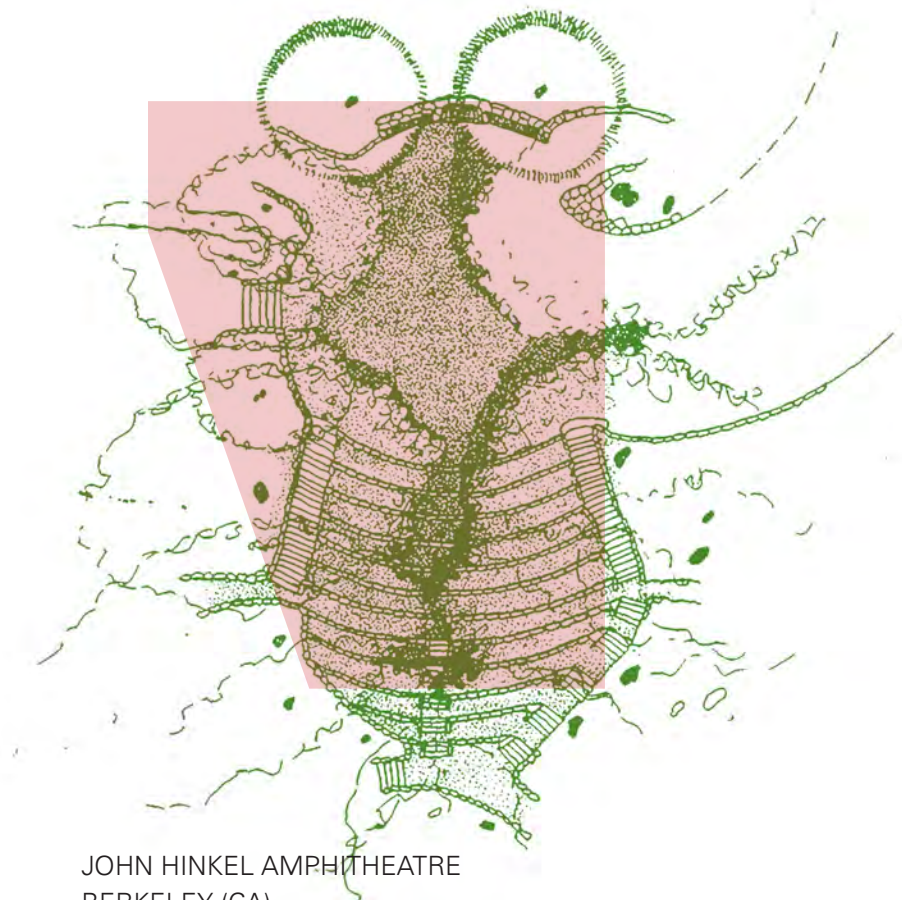
BAYVIEW OPERA HOUSE



JOHN HINKEL AMPHITHEATRE
 BERKELEY (CA)
 Designated Seating: 350 persons
 Total Seating with Additional Seating on Peripheral Walls: 450 persons



SUNRISE CIRCLE AMPHITHEATRE
 BOULDER (CO)
 Designated Seating: 800 persons



PERSPECTIVE VIEW - OUTDOOR THEATRE



CONCERT



Ruth Williams Memorial Theatre
BAYVIEW OPERA HOUSE

TOM ELIOT FISCH / KnappArchitects with HOOD

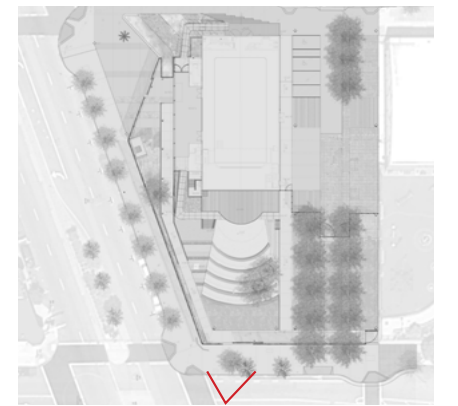
PERSPECTIVE VIEW - OUTDOOR THEATRE



MULTIPLE PERFORMANCES

Ruth Williams Memorial Theatre

BAYVIEW OPERA HOUSE



TOM ELIOT FISCH / KnappArchitects with HOOD

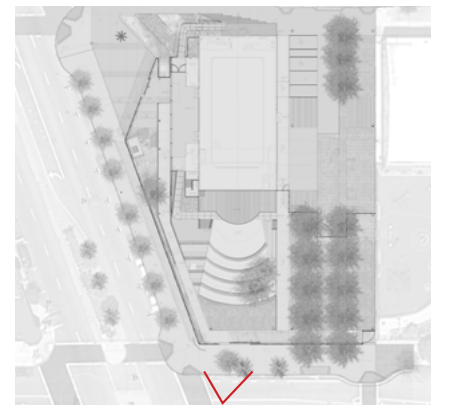
PERSPECTIVE VIEW - OUTDOOR THEATRE



MOVIE NIGHT

Ruth Williams Memorial Theatre

BAYVIEW OPERA HOUSE



TOM ELIOT FISCH / **KnappArchitects** with **HOOD**