



Municipal Transportation Agency

Operator Convenience Facilities

Civic Design Review Phase 1 & 2

18 | 06 | 2012

SAN FRANCISCO, CALIFORNIA



Operator Convenience Facilities

- **SFMTA has 76 transit lines with 146 terminals.**
 - 19 Permanent Facilities
 - 16 Licenses with businesses
 - 14 Rented Portables

- **SFMTA has 2200 Operators**
 - 1600 Male operators
 - 600 Female operators

- **SFMTA has 57 terminals with “gaps”**
 - 43 with no facilities
 - 14 with rented Portables to be replaced.

- **SFMTA Challenge—Fill the “gaps”**
 - Licenses
 - Permanent
 - Relocate Terminals
 - Prefabricated facilities

Prefabricated Facilities

- **Criteria**
 - ADA accessible
 - Male and Female accommodations
 - Desirable but not mandatory
 - Dependent on service volume at specific location
 - Direct connection to City utilities
 - Possibility to relocated if terminal changes

Six Priority Locations

- **#44 O'Shaughnessy—Evans Avenue**
- **#54 Felton—Hudson Avenue**
- **#29 Sunset—Fitzgerald Avenue**
- **#33 Stanyan—25th Street**
- **#71 Noriega—Ortega Street**
- **#1 California—Geary Boulevard**

Prefabricated Facility

- **Ameri-Can 808 Traditional ADA Plaza**
 - **Size**
 - 8' x 8' x 9.5'
 - **Material**
 - Steel body and frame
 - Custom painted

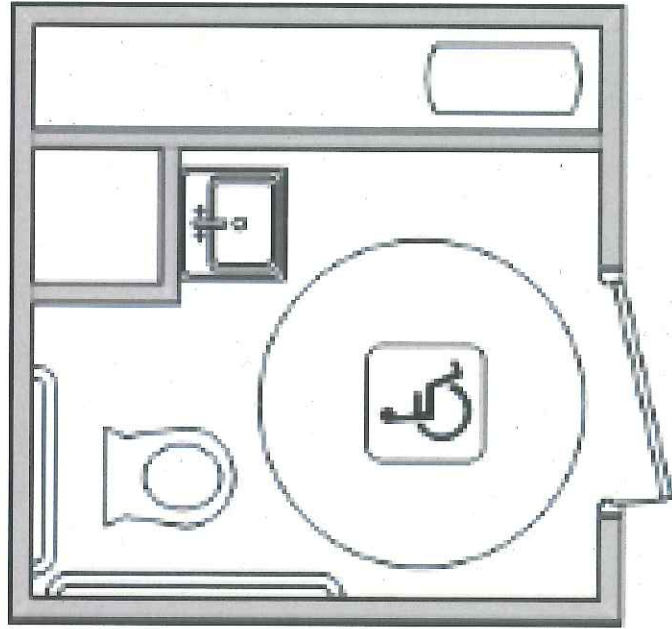
Initial Issues

- **Door Opening into Street**
 - Changed from 3-seat unit to 1-seat unit
- **Disconnected from the sidewalk**
 - Investigated bulbout
 - Lengthy design time
 - Increase in project costs
 - Investigating parklet/platform
 - Provides access to door
 - Ties into sidewalk
- **Exterior Treatment**
 - Investigated greenery
 - Street location makes difficult to maintain
 - Will work with Street SmARTS Program

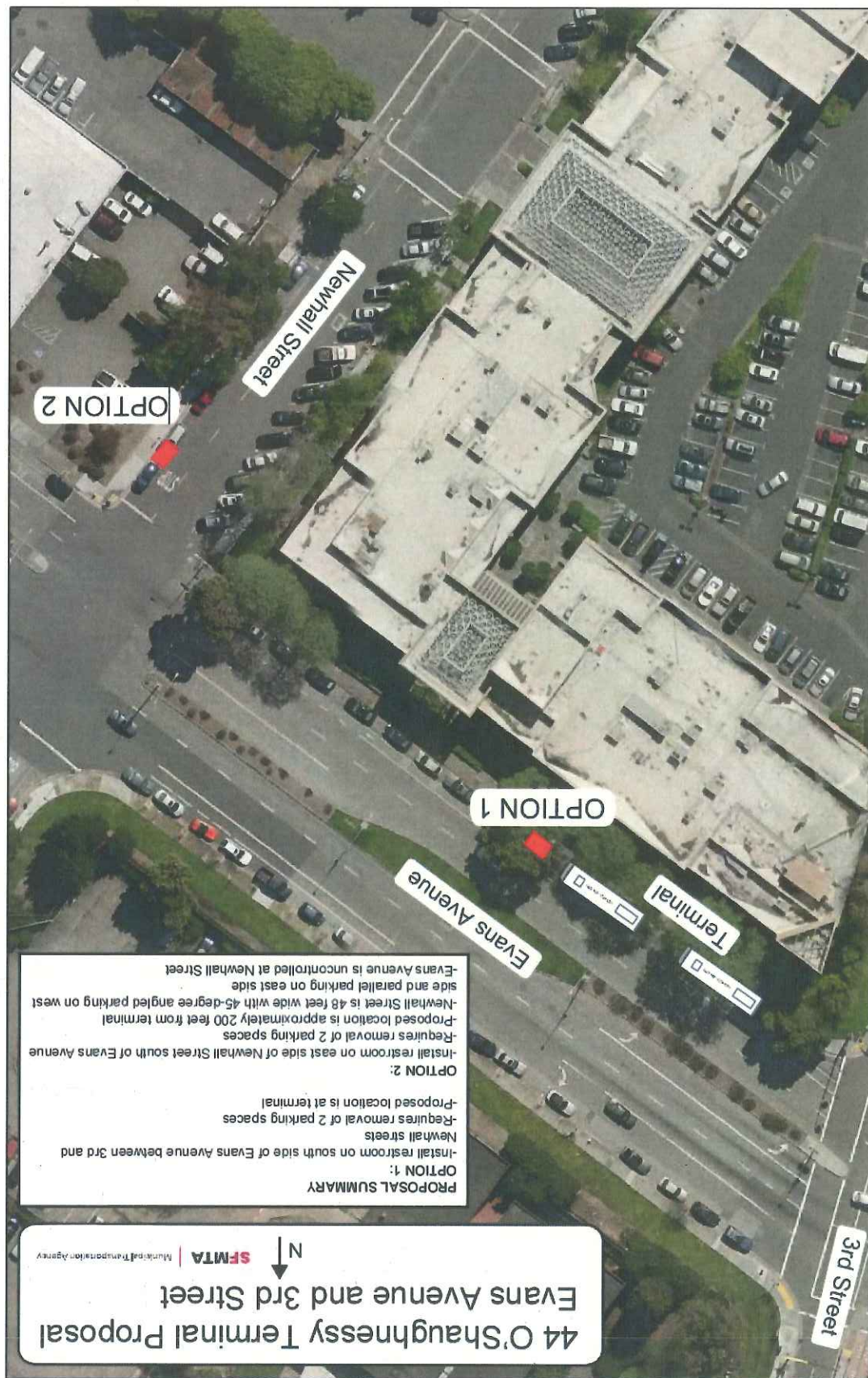
Ameri-Can 808 Traditional ADA Plaza



808 ADA Plaza



Evans and Newhall



44 O'Shaughnessy Terminal Proposal
 Evans Avenue and 3rd Street
 SFMTA | Municipal Transportation Agency
 N

PROPOSAL SUMMARY

OPTION 1:
 -Install restroom on south side of Evans Avenue between 3rd and Newhall streets
 -Requires removal of 2 parking spaces
 -Proposed location is at terminal

OPTION 2:
 -Install restroom on east side of Newhall Street south of Evans Avenue
 -Requires removal of 2 parking spaces
 -Proposed location is approximately 200 feet from terminal
 -Newhall Street is 48 feet wide with 45-degree angled parking on west side and parallel parking on east side
 -Evans Avenue is uncontrolled at Newhall Street

Evans Avenue



Evans Avenue



Operator Convenience Facilities

Thank you