



Clean and Safe Neighborhood Parks Bond, Neighborhood Parks Project

Rossi Playground

Restroom Replacement Project



CIVIC DESIGN PHASE I



Clean and Safe Neighborhood Parks Bond, Neighborhood Parks Project Rossi Playground Restroom Project

Renovation Work Includes:

- New Men's and Women's Restrooms
- New Accessible Paths to and from the Restroom
- Signage
- Related Site Improvements



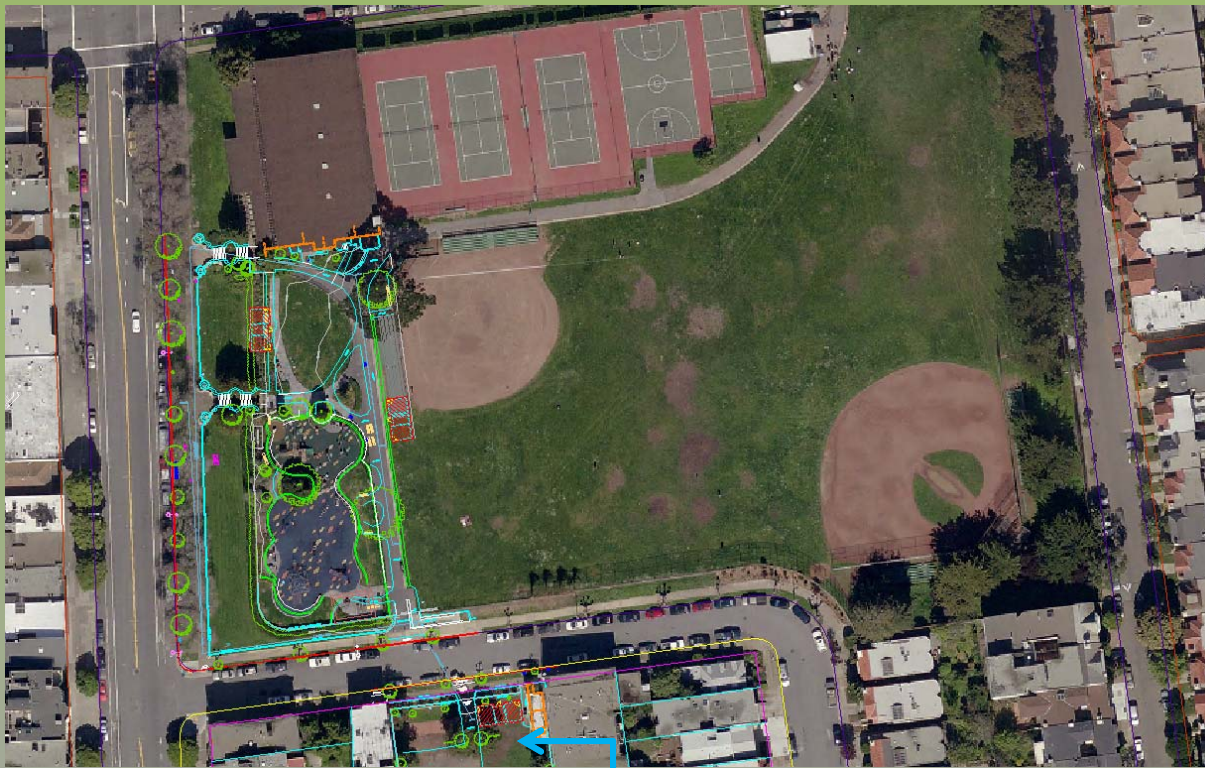
Aerial View of the Rossi Park



Clean and Safe Neighborhood Parks Bond, Neighborhood Parks Project

Rossi Playground Restroom Project

Rossi Restroom Bldg Location



Annex Location



Clean and Safe Neighborhood Parks Bond, Neighborhood Parks Project

Rossi Playground Restroom Project

Neighborhood Context

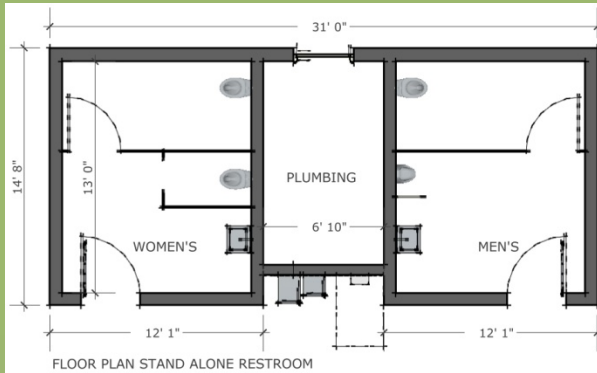




Clean and Safe Neighborhood Parks Bond, Neighborhood Parks Project

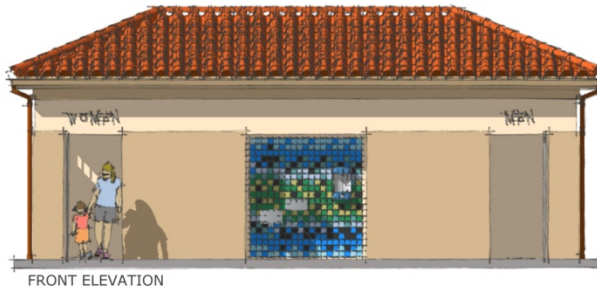
Rossi Playground Restroom Project

Proposed Rossi Restroom Bldg: "Traditional" Design



ROSSI PLAYGROUND RESTROOMS DESIGN DEVELOPMENT

- PUBLIC RESTROOMS,
450 SF ESTIMATED AREA:**
- INTEGRATION WITHIN THE NEIGHBORHOOD CONTEXT,
 - ACCESSIBILITY
 - USE OF NATURAL LIGHT & VENTILATION
 - FAMILIAR VOLUME & MATERIALS
 - WARM & HARMONIC COMPOSITION
 - EASY IDENTIFICATION
- DESIGN CRITERIA:**



FRONT ELEVATION



BACK ELEVATION



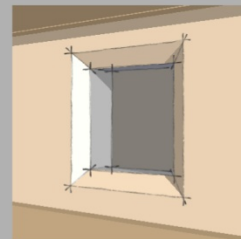
SIDE ELEVATION



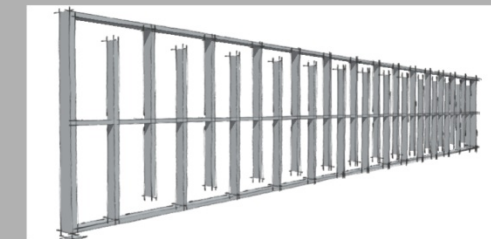
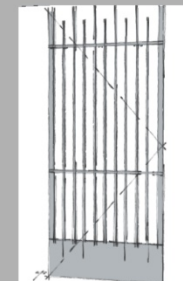
ALCOVE DETAIL - TILE ART WORK
(COMMUNITY ART WORK)



ID SIGN DETAIL
(SURFACE MOUNTED)



GLASS BLOCK WINDOW DETAIL
(12x12x4 GLASS BLOCK)



GALVANIZED METAL GATE
DETAIL



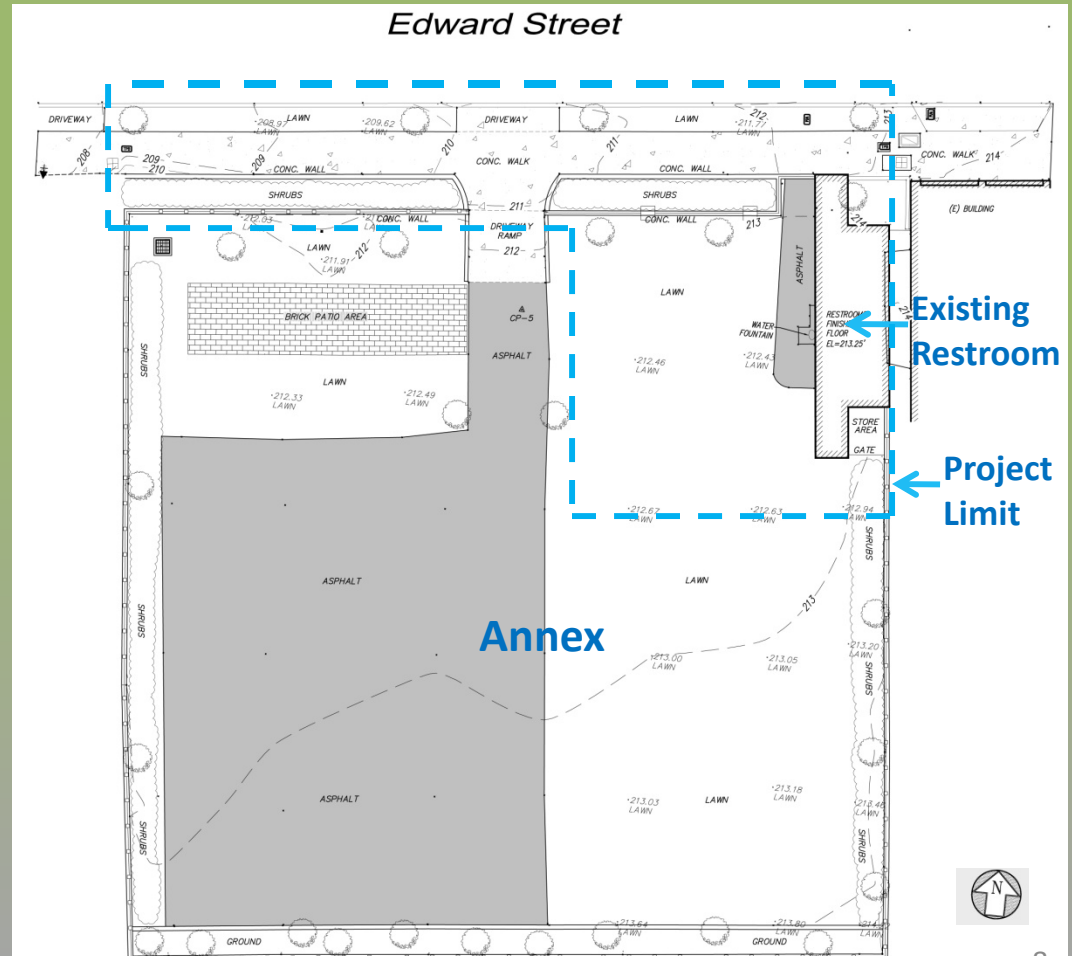
Clean and Safe Neighborhood Parks Bond, Neighborhood Parks Project

Rossi Playground Restroom Project

Existing Annex Site & Project Limit



- Elevation difference between sidewalk and the east side of the Annex: 1.5 feet. Min. 18 feet of ramp needed.
- Elevation difference between sidewalk and the west side of the Annex: 4 feet. Min. 48 feet of ramp needed.
- Lowest drainage point of Annex: northwest corner.





Clean and Safe Neighborhood Parks Bond, Neighborhood Parks Project

Rossi Playground Restroom Project

[Proposed Site Plan](#)



Section Elevation
Looking from Edward Street



Clean and Safe Neighborhood Parks Bond, Neighborhood Parks Project

Rossi Playground Restroom Project

[Proposed Restroom at Existing Site](#)





Clean and Safe Neighborhood Parks Bond, Neighborhood Parks Project

Rossi Playground Restroom Project

Site Materials



Concrete Paving



Asphalt Print Paving



Metal Picket Fence



Dietes vegeta
Fortnight Lily



Ceanothus griseus
horizontalis



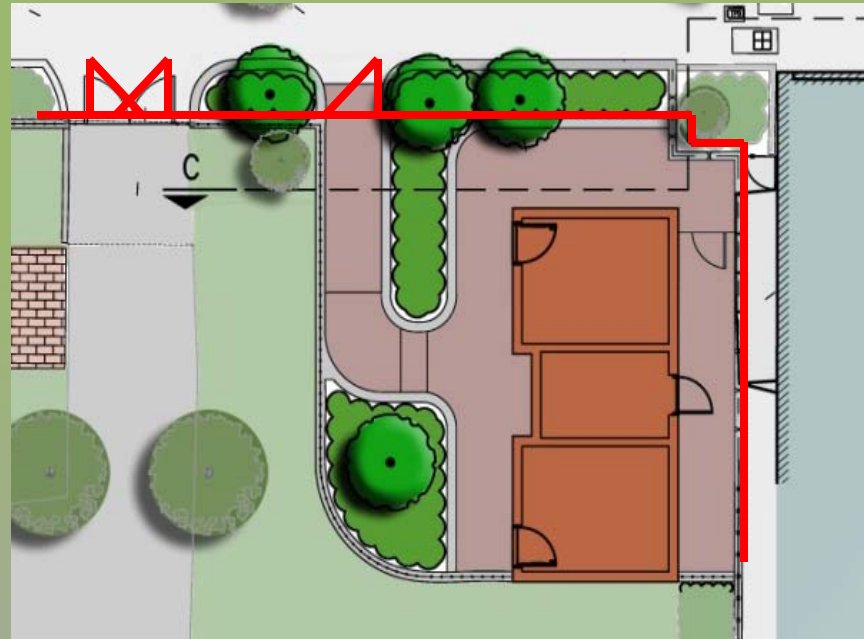
Arbutus unedo



Clean and Safe Neighborhood Parks Bond, Neighborhood Parks Project

Rossi Playground Restroom Project

Preferred Fence Layout



Fence @ Front



Clean and Safe Neighborhood Parks Bond, Neighborhood Parks Project

Rossi Playground

Restroom Replacement Project

Community Planning Process

- Restroom Task Force
 - 8 Public Meetings between January and July 2009
- Rossi PG Restroom Replacement Project
 - 2 Community Meetings
 - February 1 and March 8, 2012
 - Estimated 20 Participants, combined