

# **EARTHQUAKE SAFETY and EMERGENCY RESPONSE (ESER) BOND 1 Neighborhood Fire Stations**

## **Fire Station No. 16**

Presented to the  
Civic Design Review Committee / SFAC  
May 20, 2013

## **AGENDA**

Program Overview  
Phase 2: Design Development Presentation



## **FIRE STATION No. 16**

- Historic Evaluation
- City Planning Status
- SFAC Public Art Program Status
- Phase 1 Approval - January 14, 2013
- Project Scope Changes - Roof Deck
- Total Project Budget: \$8.4M





1938  
Built



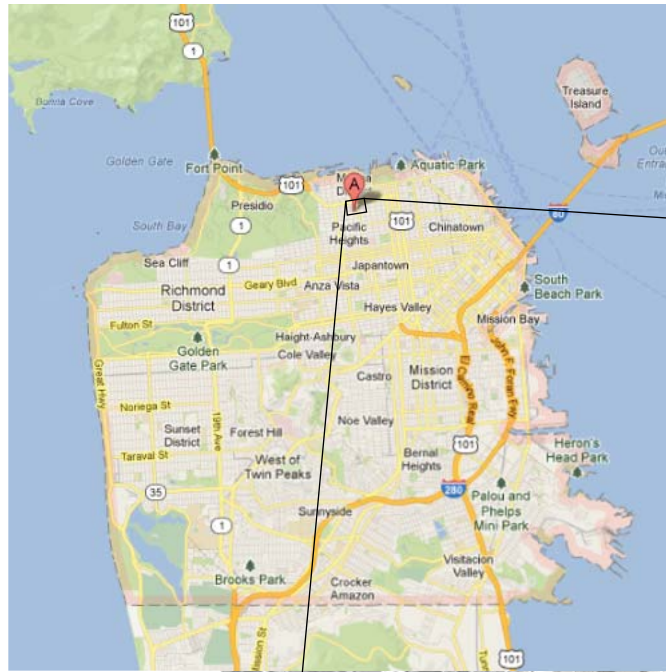
1956  
Reconstruction

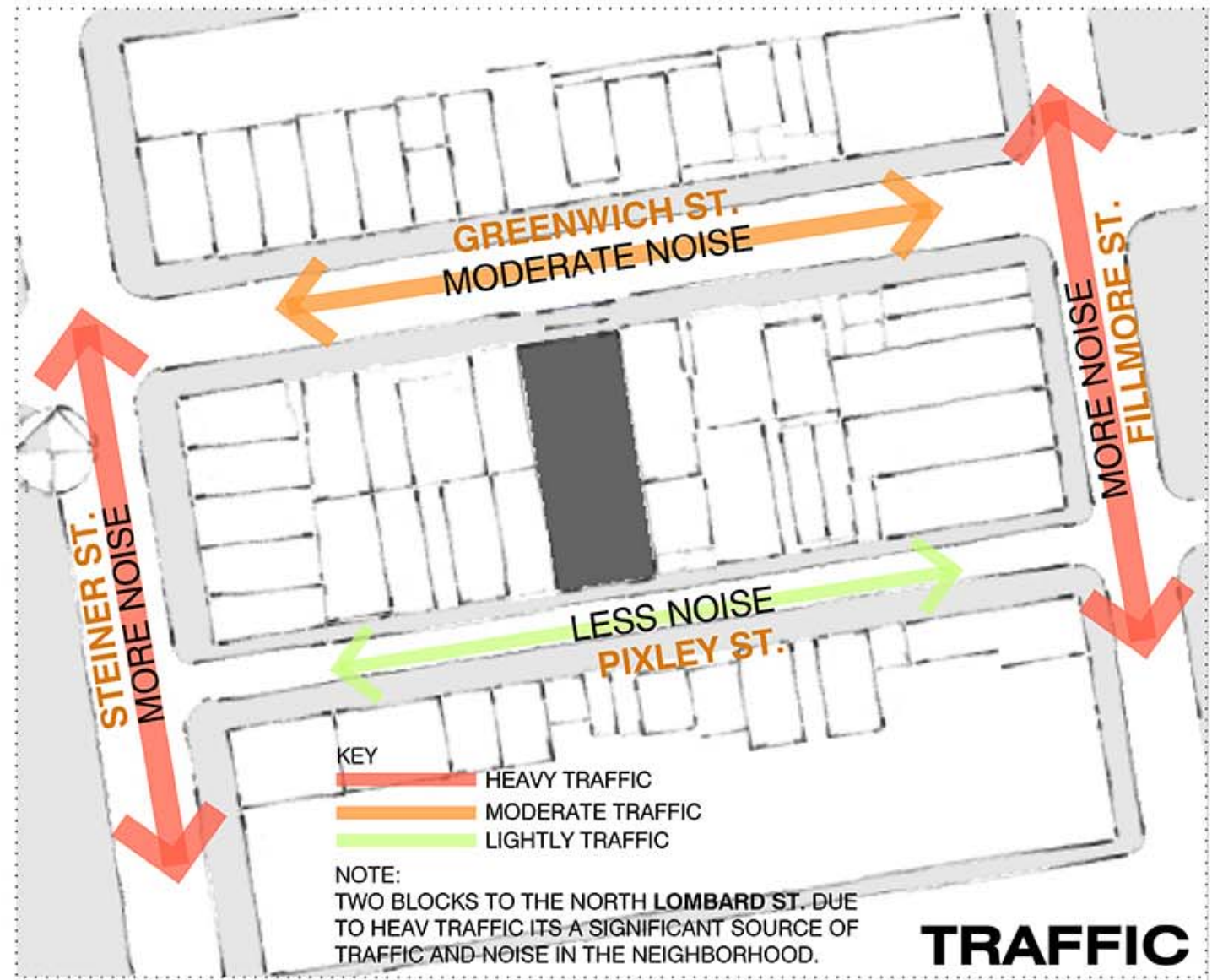
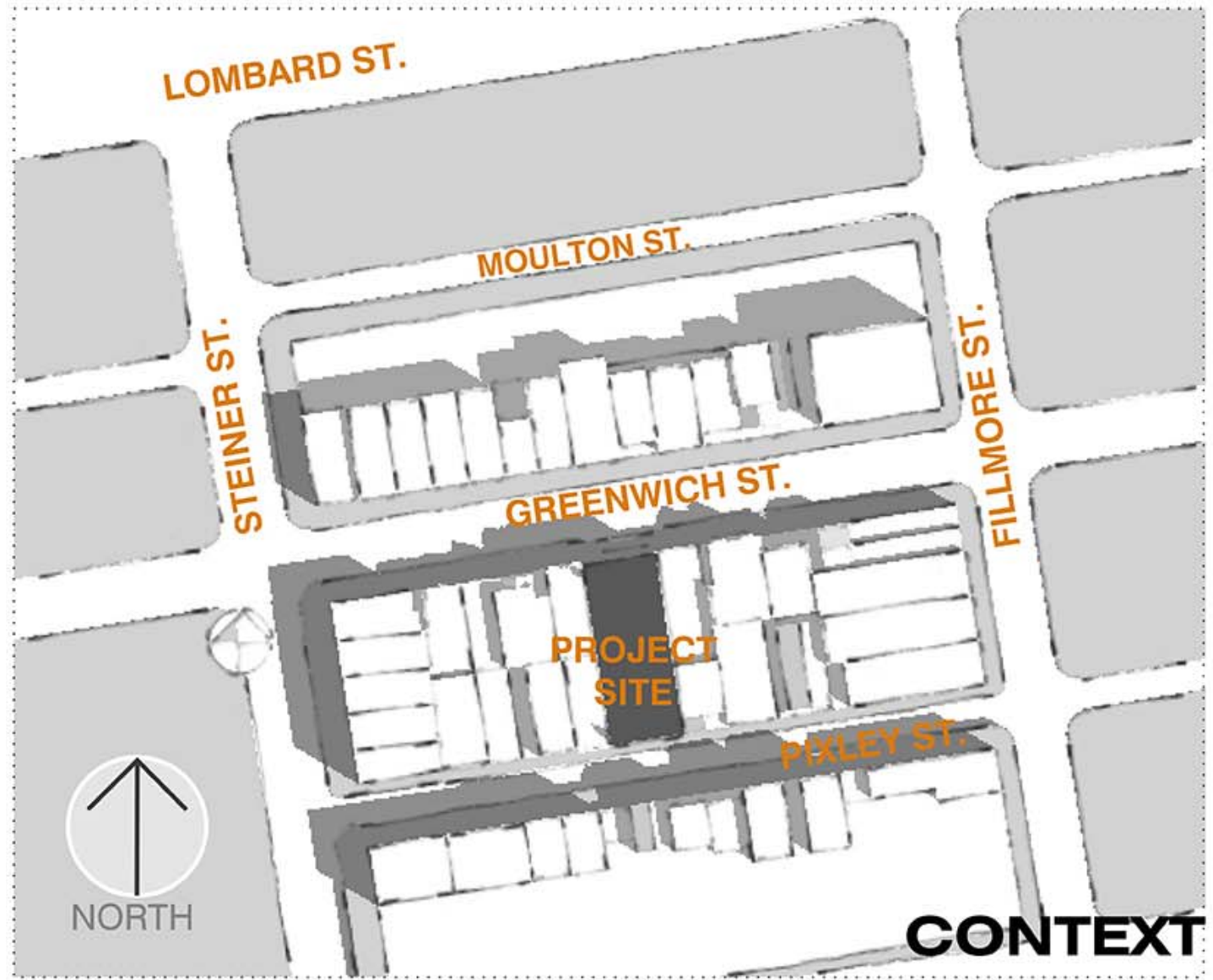


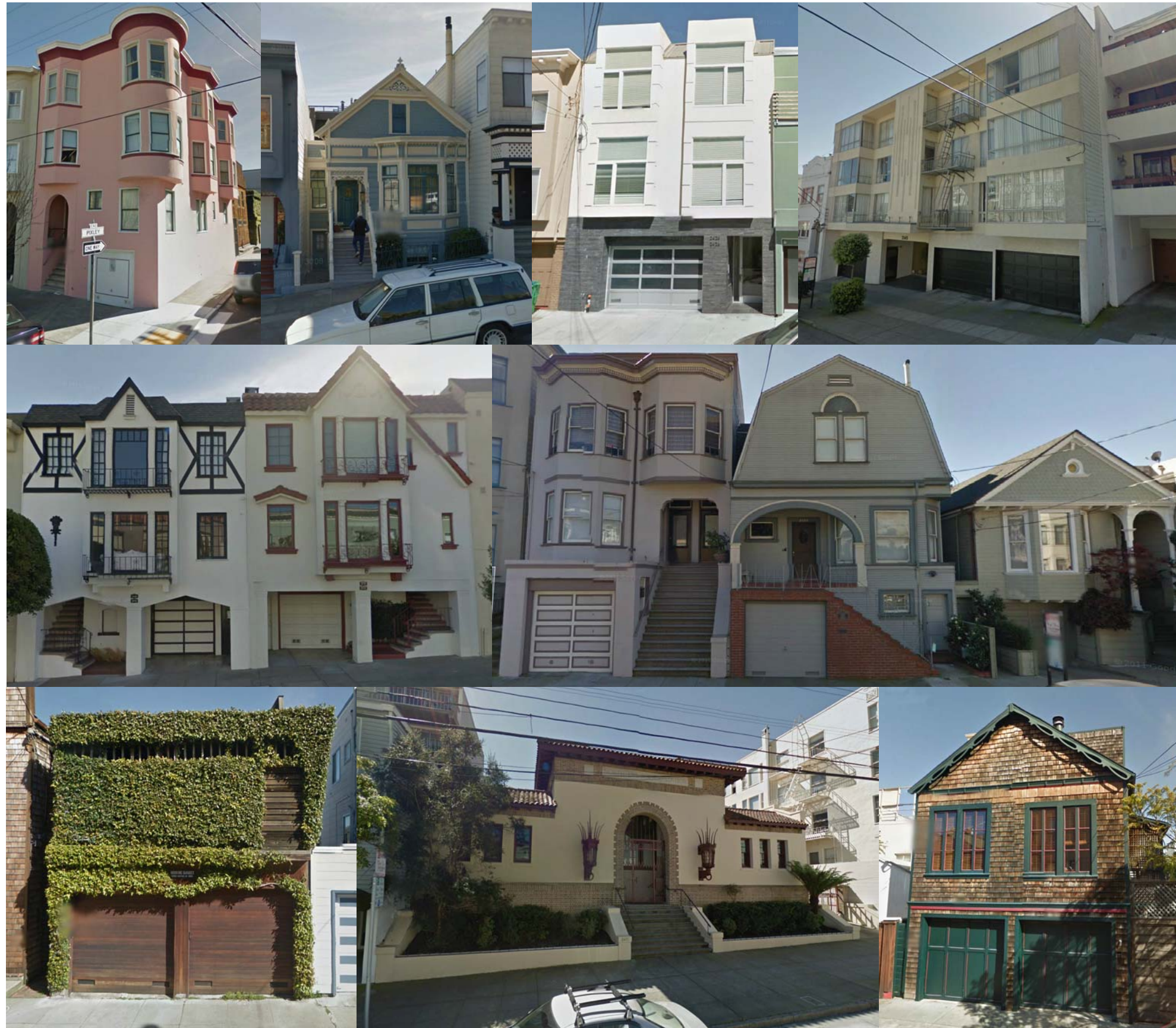
2013  
Present

1993  
Interior renovations &  
ADA upgrades









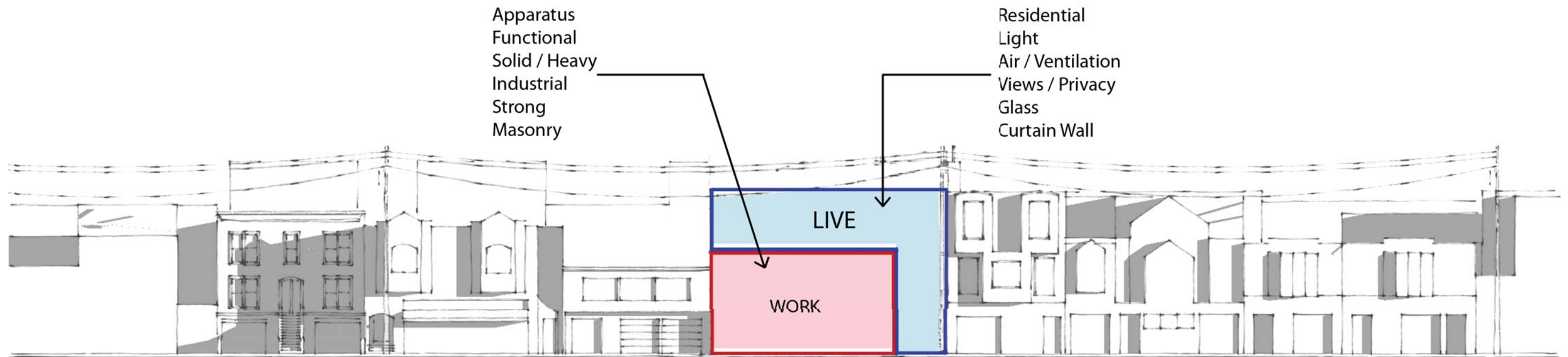
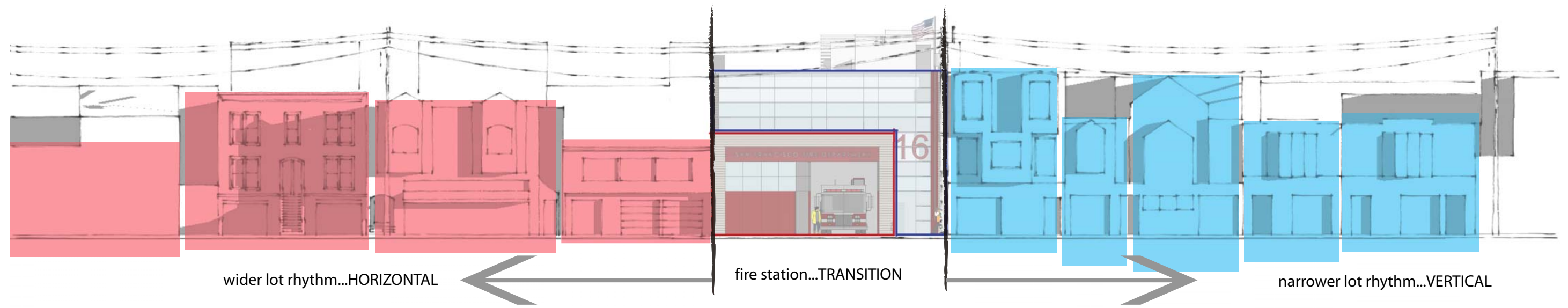


Greenwich Street

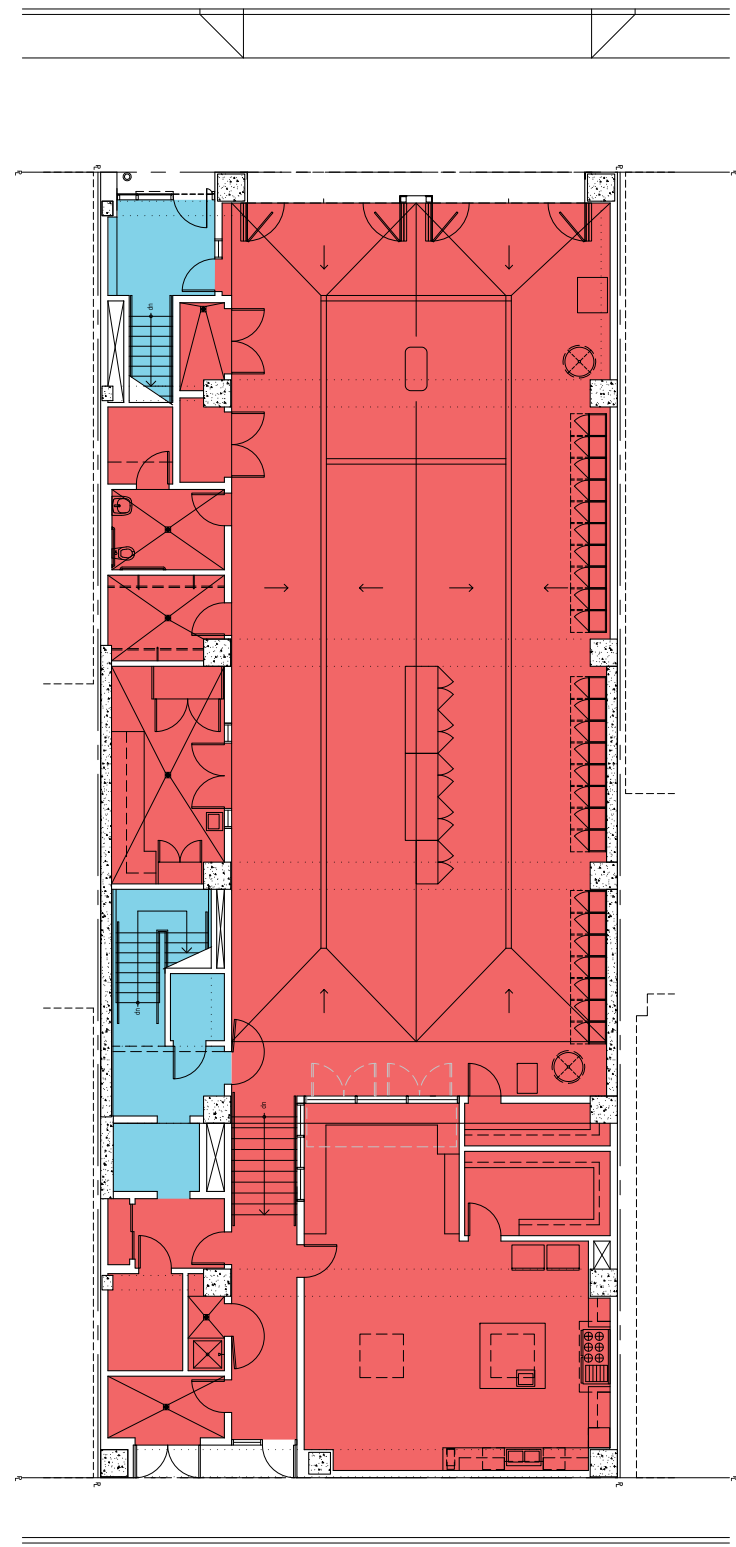


Greenwich Street





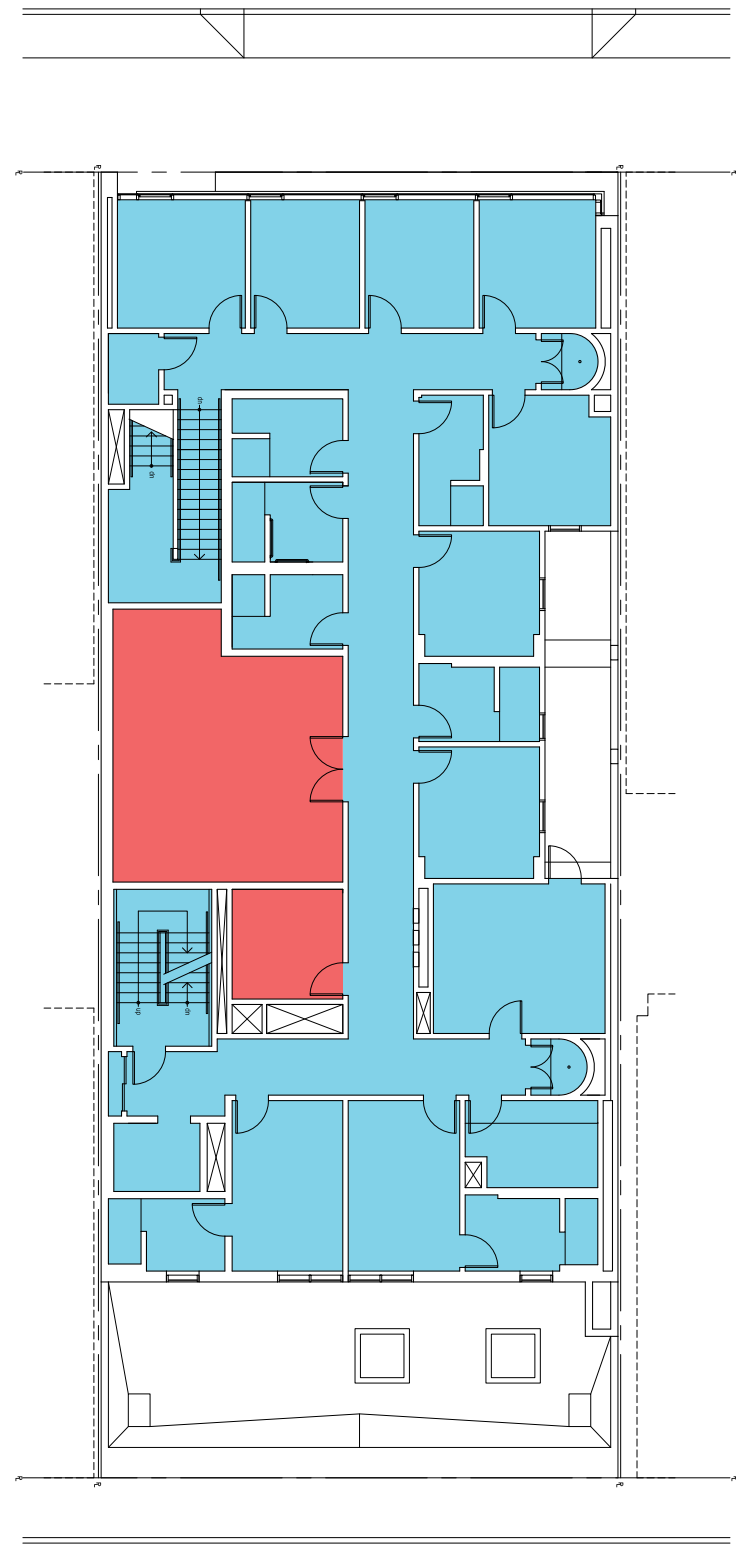




1st Floor Plan

Working   
 Living Space





2nd Floor Plan

Working Space   
 Living Space





Greenwich Street



Pixley Street





























