

Combined Basic Concept and
Schematic Design Plan
prepared for the SF Arts Commission
April 17, 2009
May 20, 2013

MISSION BAY
MARIPOSA PARK



Adopted June 2, 2009
Resolution No. 57-2009





District Circulation Diagram

LOCATION MAP & DISTRICT CIRCULATION



EXISTING CONDITIONS

Landuse Legend

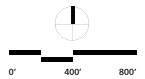
- Public Space
- Retail
- Hotel
- Residential
- Residential-SFRA
- Commercial
- UCSF / Schools
- UCSF-Hospital

Areas mapped in darker color are completed or under construction.

Bike Routes

- Bike Lane**
(Dedicated bike lane on roadway edge)
- Mission Bay Proposed Bike Route 1**
- Wide Curb Lane Bike Route**
(Wider roadway-bicyclists may be able to ride outside the path of motor vehicle travel)
- Bike Route**
(Bikes & cars share the same - often narrow - roadway)

Vehicular circulation (private vehicles as well as transit and service vehicles) is accommodated in the streets leading to, and surrounding the park including the provision of on-street parking spaces on Southern Connector and 4th Streets. Owens Street is a primary entrance to Mission Bay for vehicles coming from I-280 and Mariposa Street is a primary entry to Mission Bay for all modes of circulation coming from Potrero Hill. 4th Street is an important internal north-south connector for Mission Bay and in particular the UCSF Campus including the hospital.





Ecological History

Maps from 1850 locate Mariposa Park in historical tidal marsh area.

"Ringing former Mission bay, tidal marshes with meandering sloughs spread as far north as Mission Street near Seventh and Eighth Streets, and extended to the foot of Portrero Hill. In 1853, Mission Street crossed this marsh as a wooden plank road, and continued southwest in this fashion across the sand hills to Mission Dolores. The 1860 toll road project on Mission Street began the filling of the marsh area." (Mission Bay Historical Marshes-Creek & Watershed Map of San Francisco, SFPUC)

Map Reference:
Creek & Watershed Map of San Francisco, SFPUC



Cultural History

The site's prominent historical character is railroad tracks. Historical maps show that the site used to be a roundhouse. Also, the workers grew flowers at Mission Bay Garden.

"Squeezed into a small bit of real estate between a hill, a wye and a steel company, Mission Bay Roundhouse was constructed in 1906 as a place to perform inspections and light repairs on locomotives that arrived/departed/switched the China Basin area of San Francisco. Passenger power constituted the majority of its customers. After steam bowed out in January, 1957, such extensive facilities were not required. The roundhouse closed on February 12, 1960.



Mission Bay Roundhouse possessed two gardens: the traditional outside locomotive servicing tracks fed by the turntable, and an actual flower garden, which was located behind the roundhouse up against the bank below Mariposa Street.....but there has been no actual garden since Mission Bay Roundhouse was demolished."

Map and Photo Reference:
Mission Bay Roundhouse (http://wx4.org/to/foam/sp/san_fran/mission/1bay.html#anchor)

ECOLOGICAL & CULTURAL HISTORY



SITE HISTORY OVERLAY



CONCEPTUAL PLAN



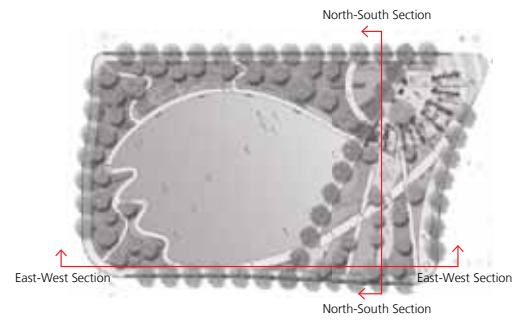
OVERALL BIRD'S EYE PERSPECTIVE



East-West Section
Scale: 1"=35'-0"



North-South Section
Scale: 1"=35'-0"



CROSS SECTIONS

COMMUNITY FEEDBACK OVERVIEW

Meetings

The design is the result of effective engagement with neighborhood and Mission Bay stakeholders. Meetings included:

- Community Workshops and Presentations in 2008 and 2009
- Neighborhood Focus Group Meeting 2008
- Mission Bay CAC Presentation 2009
- Parks Commission Presentation and Approval 2009

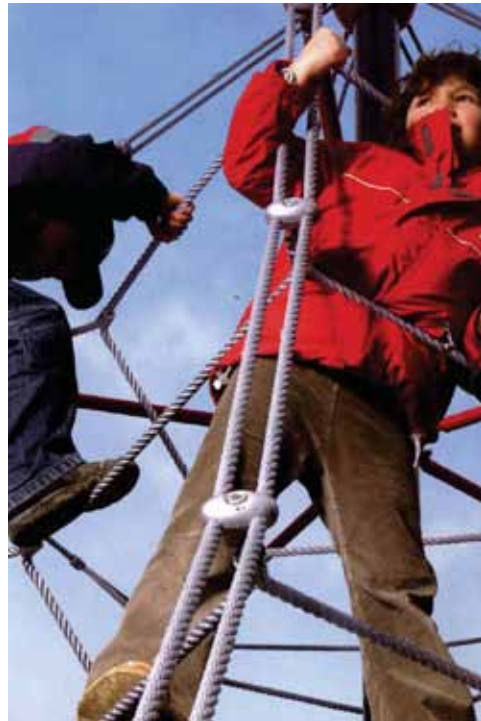
Feedback/Discussion

- Field should be multi-use with no formal soccer use.
- Idea of a multi-function park such as Dolores Park was well received.
- Healing garden and butterfly garden should be explored and strengthened.
- The view from the children's hospital and reciprocal visual nature of the park is important as it relates to the health of patients.
- Park should express ecology and history in a meaningful way.
- Interpretative signage can help convey information.
- Freeway sound buffering and air quality measures are desired.

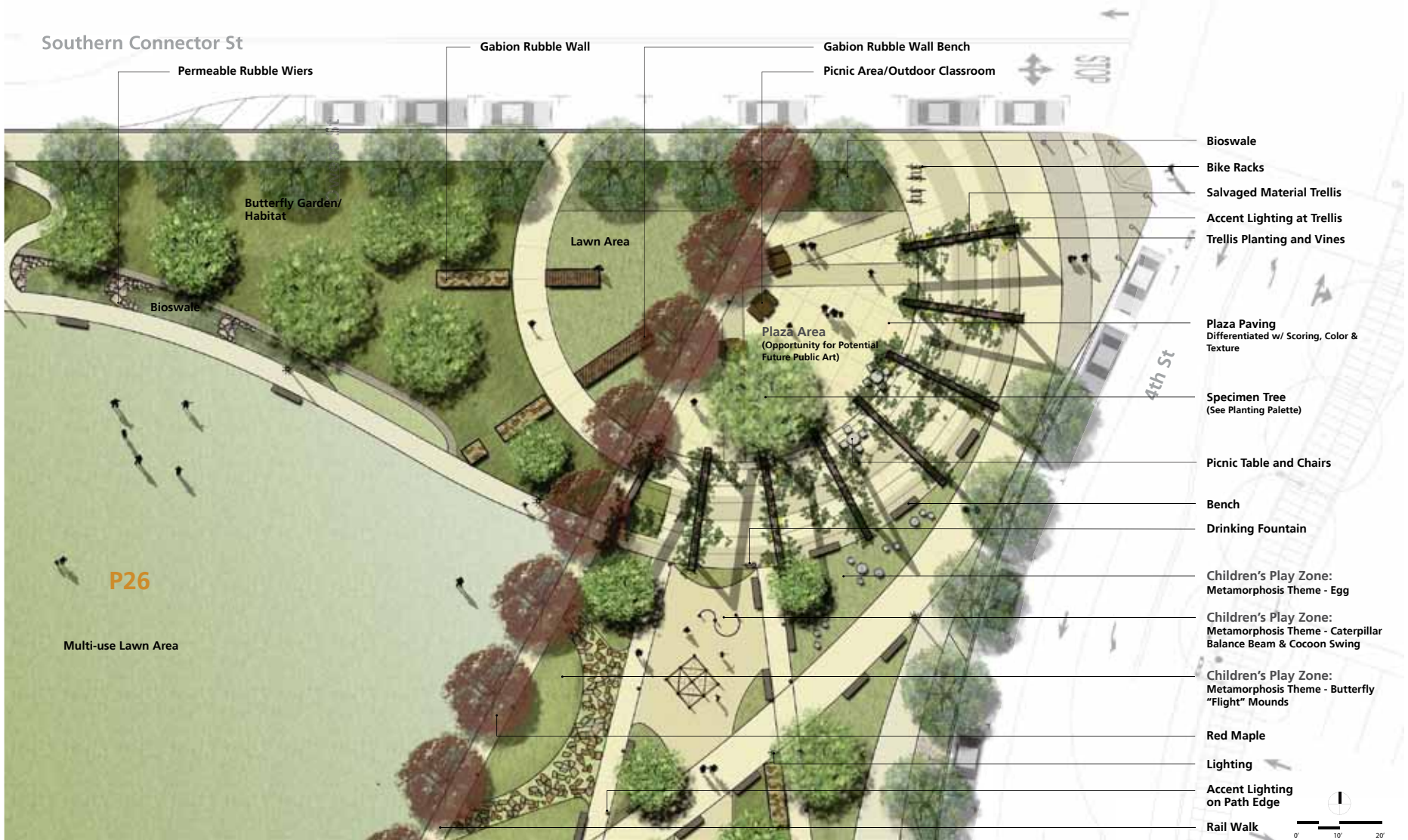




INDUSTRIAL WATERFRONT CHARACTER IMAGES



LANDSCAPE CHARACTER IMAGES



PLAZA ENLARGEMENT PLAN



VIEW FROM MARIPOSA STREET & 4TH STREET



VIEW FROM 4TH STREET &
SOUTHERN CONNECTOR STREET



*Custom steel arms are available to this bench series. Arms will be bolted to bench.

Bench



Picnic Table and Benches



Table and Chair Groupings



Bicycle Racks

Site Furnishings



Bollard



Trash Receptacle



Drinking Fountain

SITE MATERIALS, FURNISHINGS & LIGHTING - I



Trellis & Paving



Plaza Paving:
Differentiated w/ Scoring,
Color & Texture



Gabion Rubble Wall Bench



Sight Furnishings



Play Structure & Element



Lighting



Accent Lighting on Path Edge



Accent Lighting



Accent Lighting at Trellis

SITE MATERIALS, FURNISHINGS & LIGHTING - II



Owens St: Capeput Tree / Melaleuca quinquenervia



Quercus agrifolia / Coast Live Oak



Mariposa St: Ginkgo / Ginkgo Biloba 'Autumn Gold'



California Buckeye / Aesculus Californica



Minnesota/4th St: Chinese Scholar Tree / Sophora Japonica

Southern Connector: California Buckeye / Aesculus Californica



Columnar Red Maple / Acer rubrum 'Armstrong'

Street Tree

Urban Garden



Native Coastal Scrub and Prairie (Hydroseed, Plug, and Container)



California Buckeye / Aesculus Californica



Urban Appropriate Native / Drought Tolerant



Columnar Red Maple / Acer rubrum 'Armstrong'



Trees
Coast Live Oak (*Quercus agrifolia*)
Coak Oak (*Quercus suber*)
California Buckeye (*Aesculus californica*)

Shrubs and Grasses
Beach Strawberry (*F. chiloensis*)
Bicolor Lupine (*Lupinus bicolor*)*
Bladder Flansip (*Lomatium utriculatum*)
Blue Dicks (*Dichelostemma pulchellum*)
Blue Eyed Grass (*Sisyrinchium bellum*)
Blue Wild Rye (*Elymus glaucus*)
California Blackberry (*Rubus ursinus*)
California Brome (*Bromus carinatus*)
California Buttercup (*Ranunculus californicus*)
California Sagebrush (*Artemisia californica*)
California Strawberry (*Fragaria vesca* subsp. *californica*)
Checkerbloom (*Sidalce a malvaeflora*)
Coast Angelica (*Hanelica herdersoni*)
Cobweb Thistle (*Cirsium occidentale*)
Cow Parsnip (*Herculeum lanatum*)
Coyote Brush (*Baccharis pilularis*)
Douglas Iris (*Iris douglasiana*)
Footsteps-of-spring (*Sanicula arctopoides*)
Indian Paintbrush (*Castilleja affinis*)
Lizard Tail (*Eriophyllum staechadifolium*)
Pearly Everlasting (*Anaphalis margaritacea*)
Purple Needle Grass (*Stipa pulchra*)
Silver Lupine (*Lupinus albus*)**

Trees
Coast Live Oak (*Quercus agrifolia*)
Coak Oak (*Quercus suber*)
California Buckeye (*Aesculus californica*)

Shrubs and Grasses
California Gray Rush (*Juncus Patens*)
Ceanothus Species*
Pride of Madeira (*Echium fastuosa*)*
Seaside Daisy (*Erigeron glaucus*)*
Dwarf Coyote Bush (*Baccharis pilularis*)*
Red Elderberry (*Sambucus racemosa*)*
California Huckleberry (*Vaccinium ovatum*)*
Salvia species*
Buckwheat (*Eriogonum* spp.)
Dwarf Maiden Hair Grass (*Miscanthus sinensis* 'Adagio')
New Zealand Flax (*Phormium* sp.)

Trees
Columnar Red Maple (*Acer rubrum* 'Armstrong')
Sweetshade (*Hymenosporum flavum*)
Citrus Tree (*Citrus* spp.)**
Idaho Locust (*Robinia idahoensis* purple robe) - Potential plaza area specimen tree

Shrubs and Grasses
Berkley Sedge (*Carex tumulicola*)
California Fannel Bush (*Fremontodendron californicum*)
Montbretia (*Crococoma xrococsmiflora*)
Fescue Sod (Medallion Plus Variety)
Grevillea (*Grevillea* 'Magic Lantern')
Lantana (*Lantana Montevidensis*)
Lemon Verbena (*Aloysia triphylla*)**
Ninebark (*Physocarpus opulifolius*)
Passion Vine (*Passiflora alata* 'Ruby Glow')
Snowbell Bush (*Styrax officinalis*)
Vervain (*Verbena bonariensis*)
Western Mock Orange (*Philadelphus lewisii* var. *californica*)*

Vines
Dutchman's Pipe Vine (*Aristolochia californica*)*
Climbing Jasmine (*Lasminum Polyanthum*)**
Clematis (*Clematis Moritana* 'Mayleen')**
Giant Burmese Honeysuckle (*Lonicera Hildebrandiana*)**
Kiwifruit (*Actinidia Deliciosa*)
Chilean Jasmine (*Mandevilla Laxa*)**
Chinese Wistena (*Wistena Sinensis*)**

* Butterfly/hummingbird attractor and or other beneficial insects

PLANTING PALETTE

