



**SFMTA OPERATOR'S RESTROOM AT
PHELAN AVENUE NEAR
OCEAN AVENUE**

SFMTA Operator's Restroom

Project Goals

Replace the existing Phelan Loop Operator's restroom which will be demolished as part of the SFMTA new Phelan Loop Project

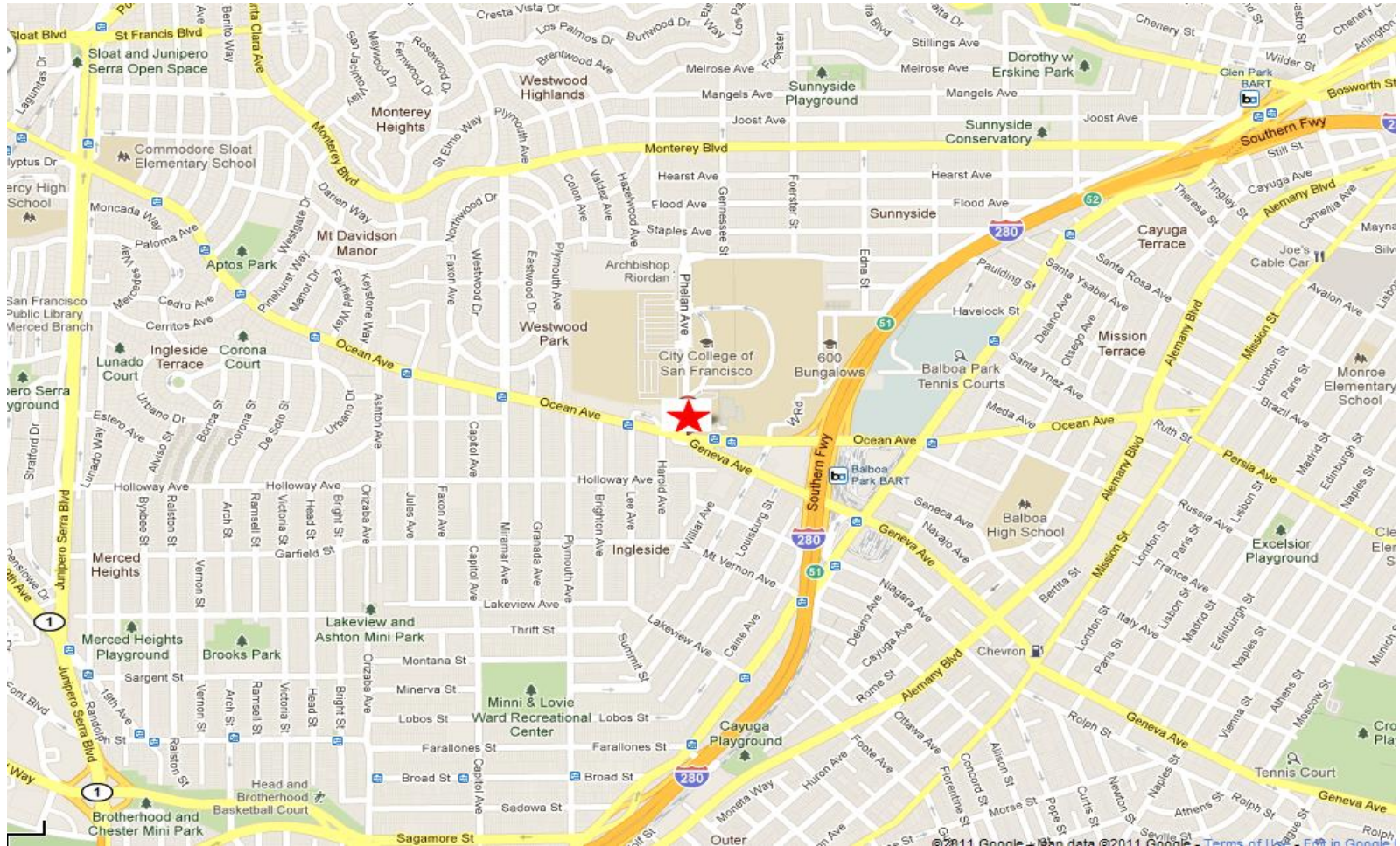
- **Provide men's and women's restroom**
- **Provide design consistent with SFMTA's architectural language**
- **Integration with Phelan Loop Development project & surrounding area**
- **Enrich site's landscaping**

Current Phelan Loop Area

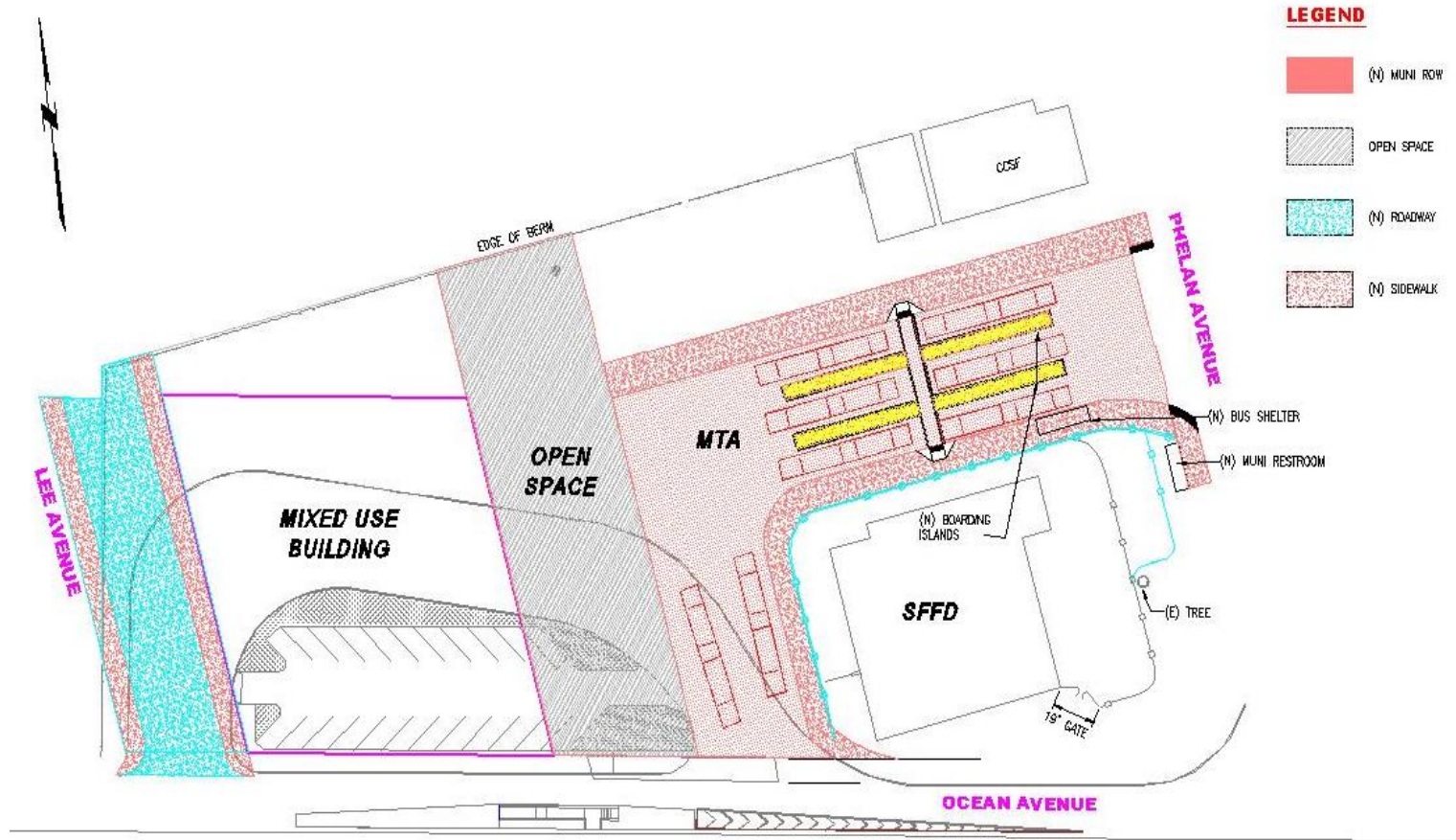


Aerial photo of existing Phelan Loop Area, 3/30/2010

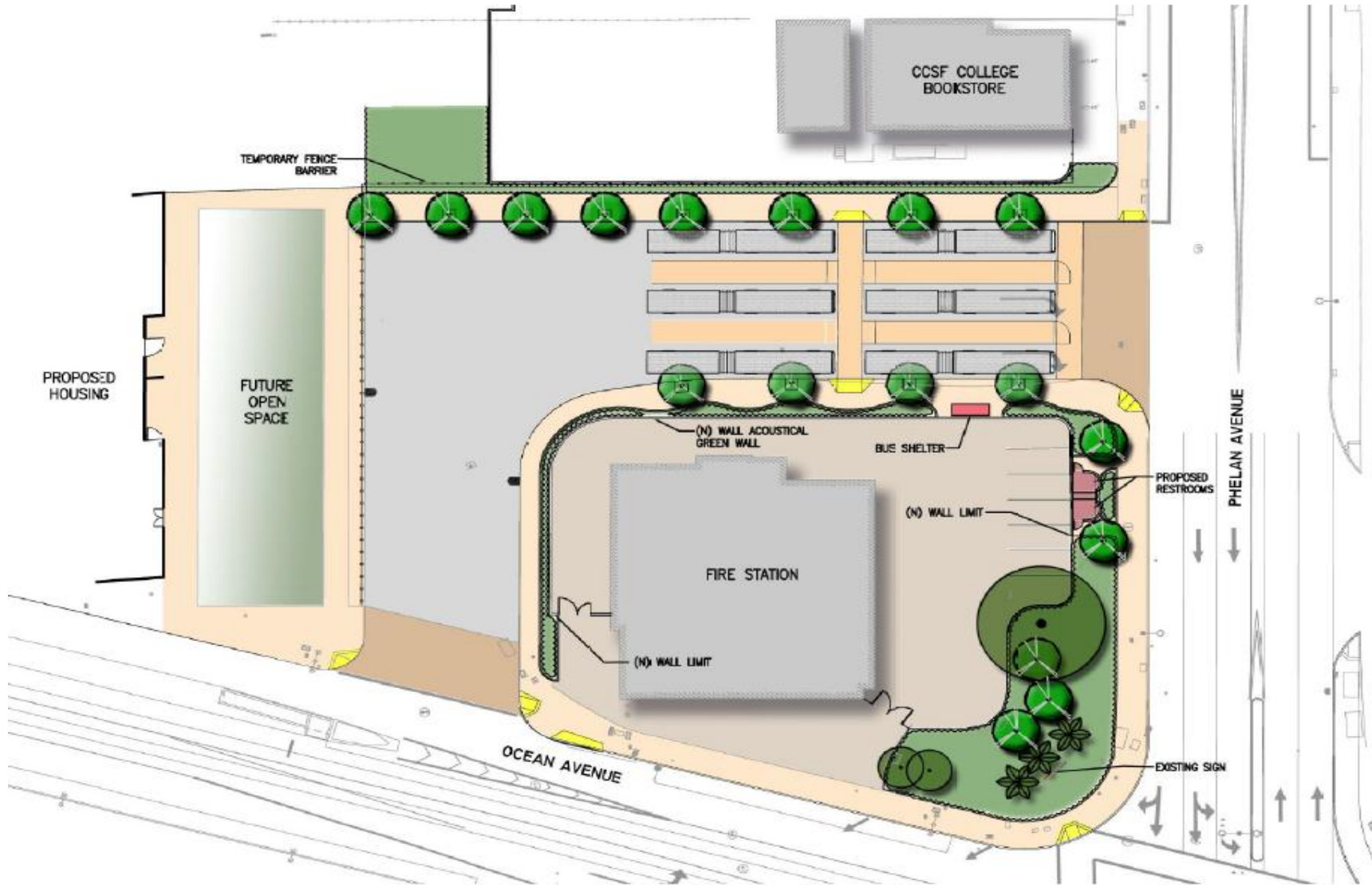
Vicinity Map



Project Area Map



New Site Plan



Existing Site and Surrounding Area



Phelan



Phelan



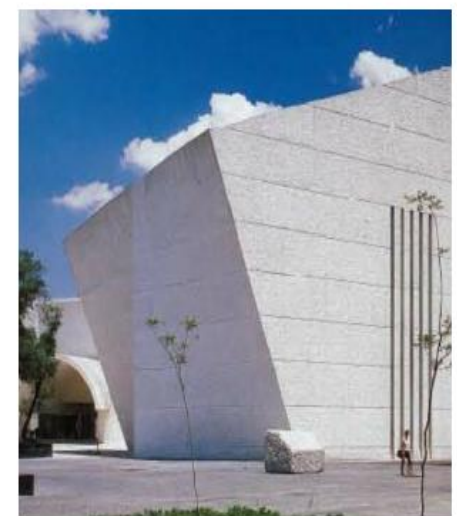
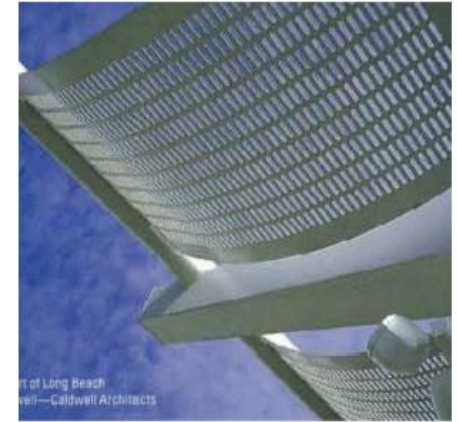
Phelan

Elevation @ Phelan



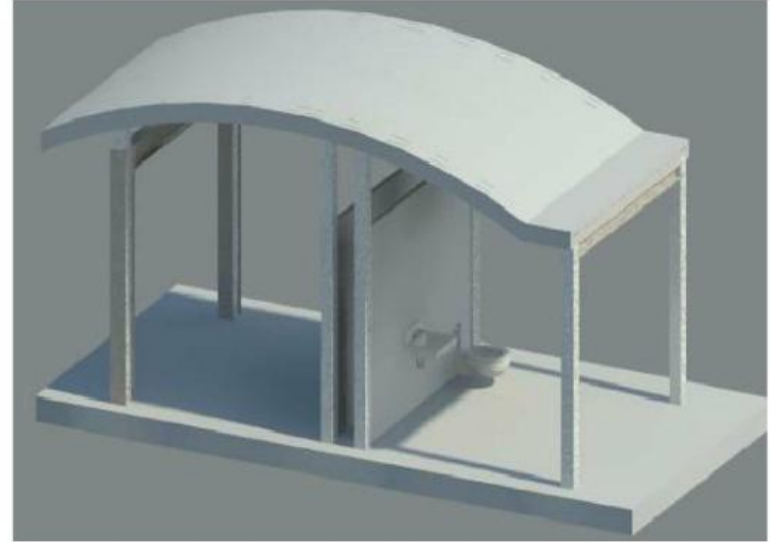
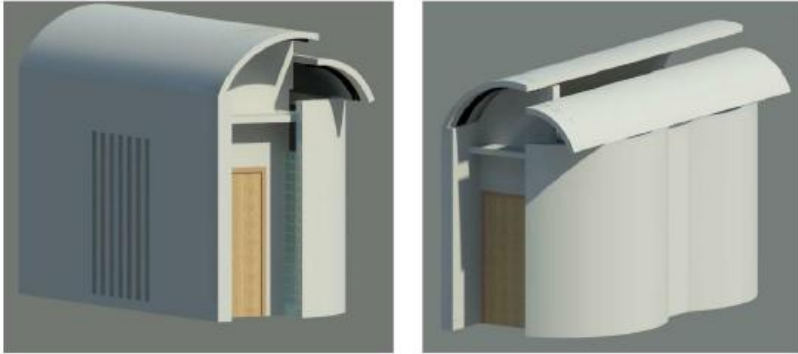
Ocean

Architectural Reference



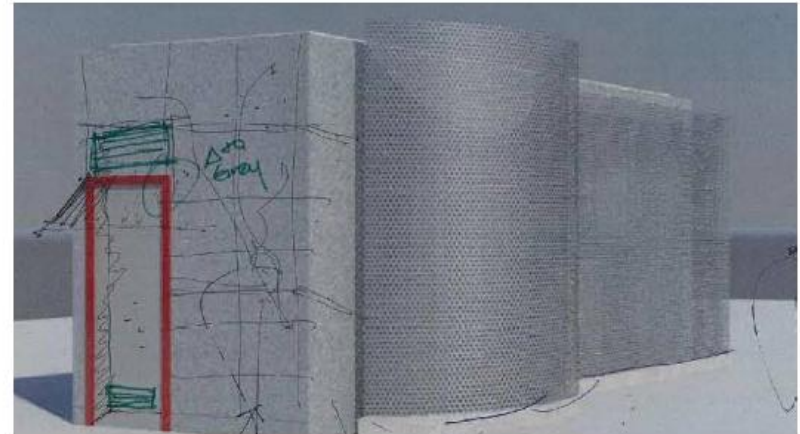
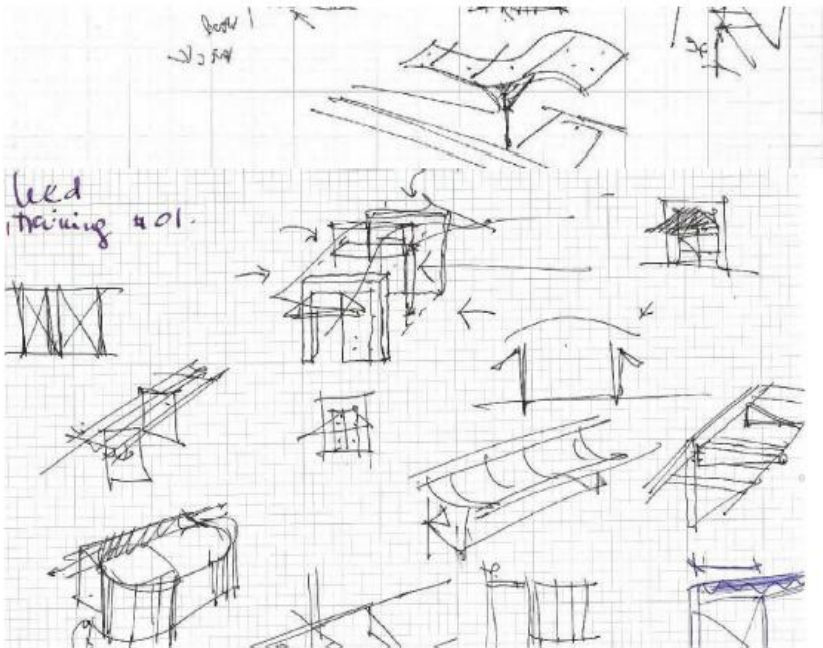
Sketches Illustration of Design Progression

2



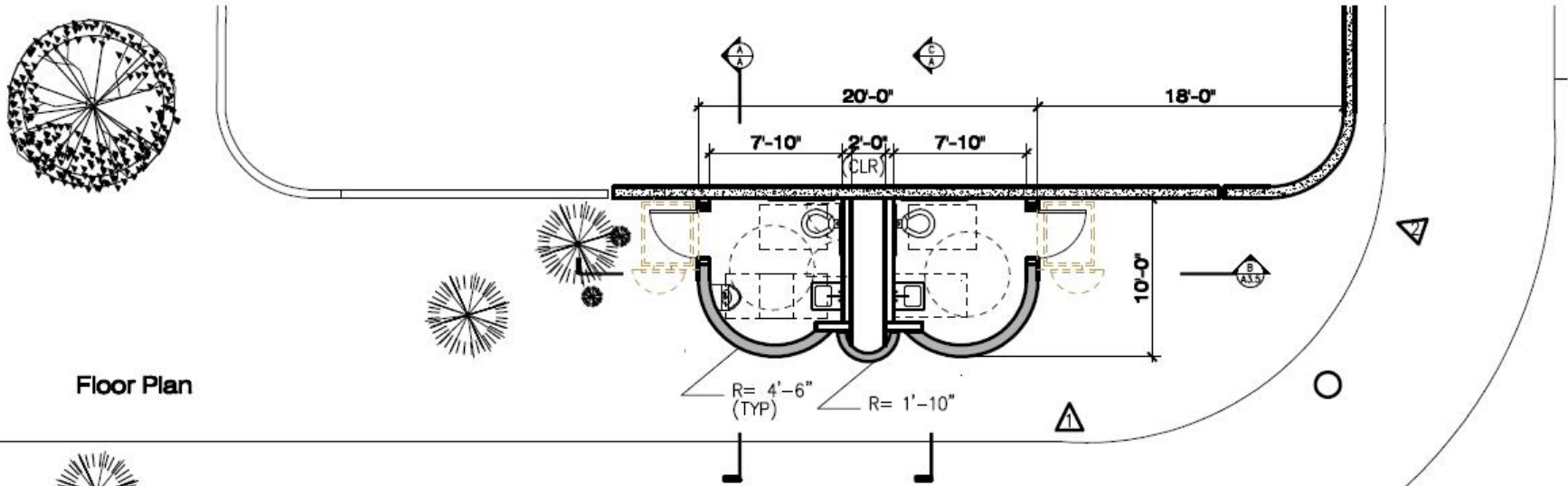
3

1



4

Floor Plan

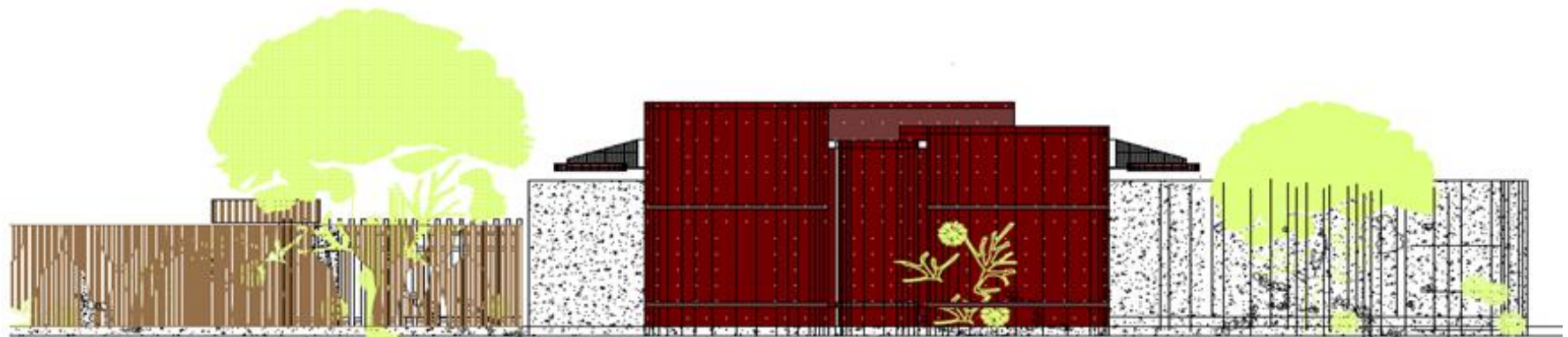
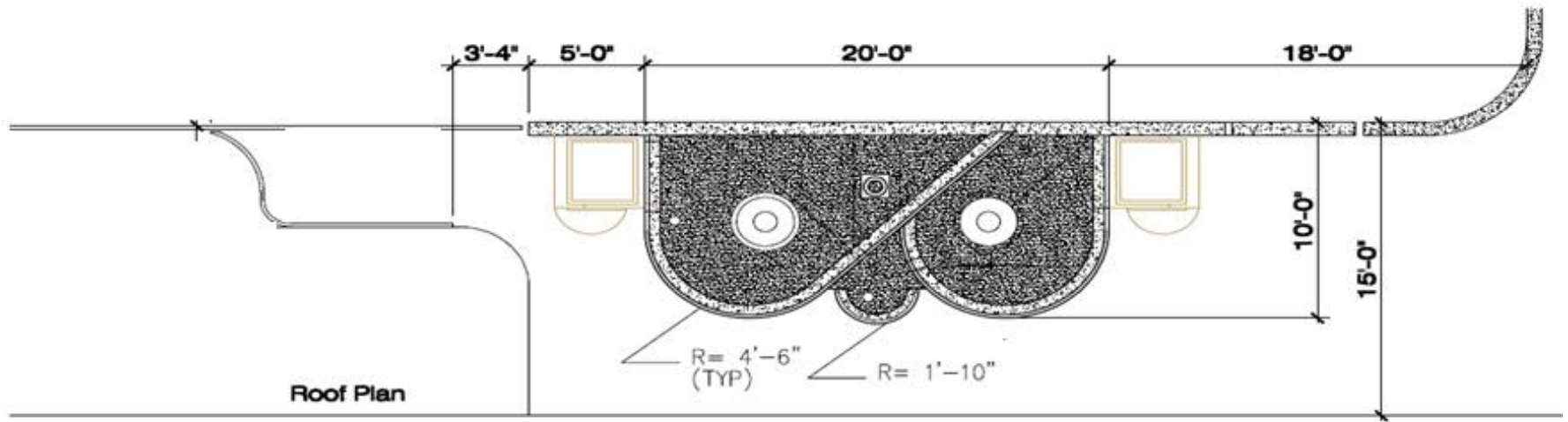


View 1



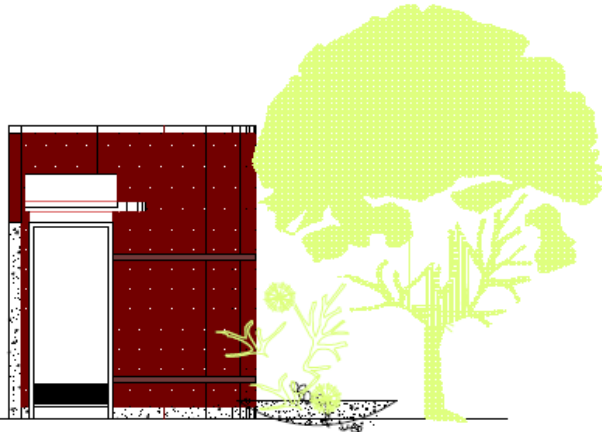
View 2

Roof and Elevation Plan



Elevations: South, North, and West

Building
Metal Panels



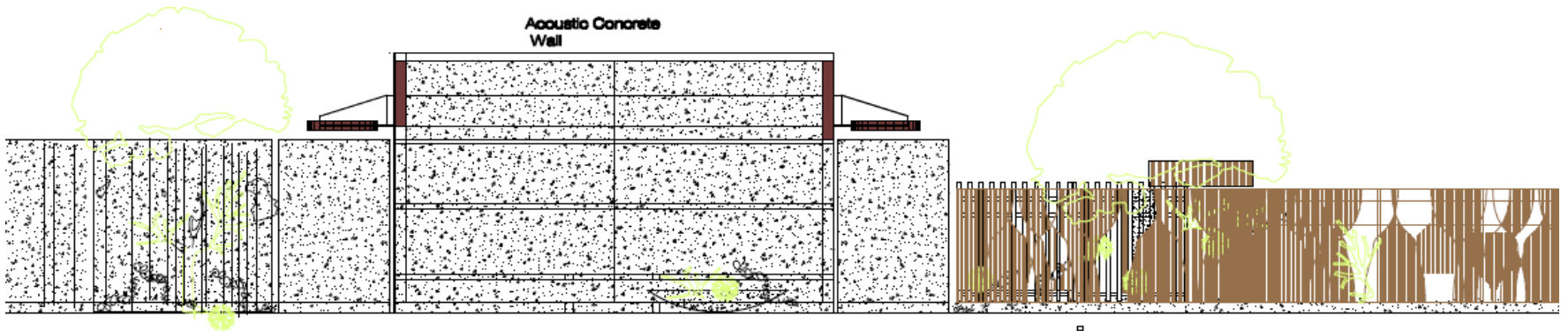
South Elevation

Building
Metal Panels



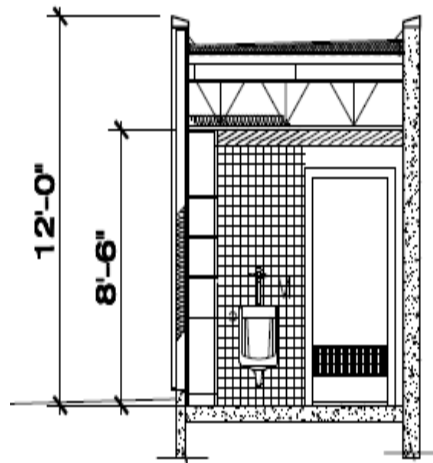
North Elevation

Acoustic Concrete
Wall

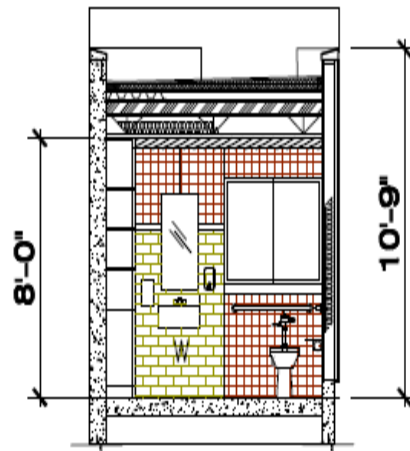


West Elevation

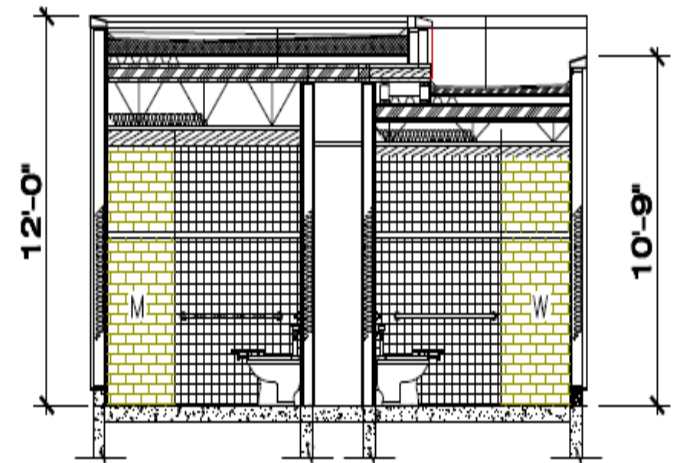
Sections Plan: A, B, and C



Section A-A

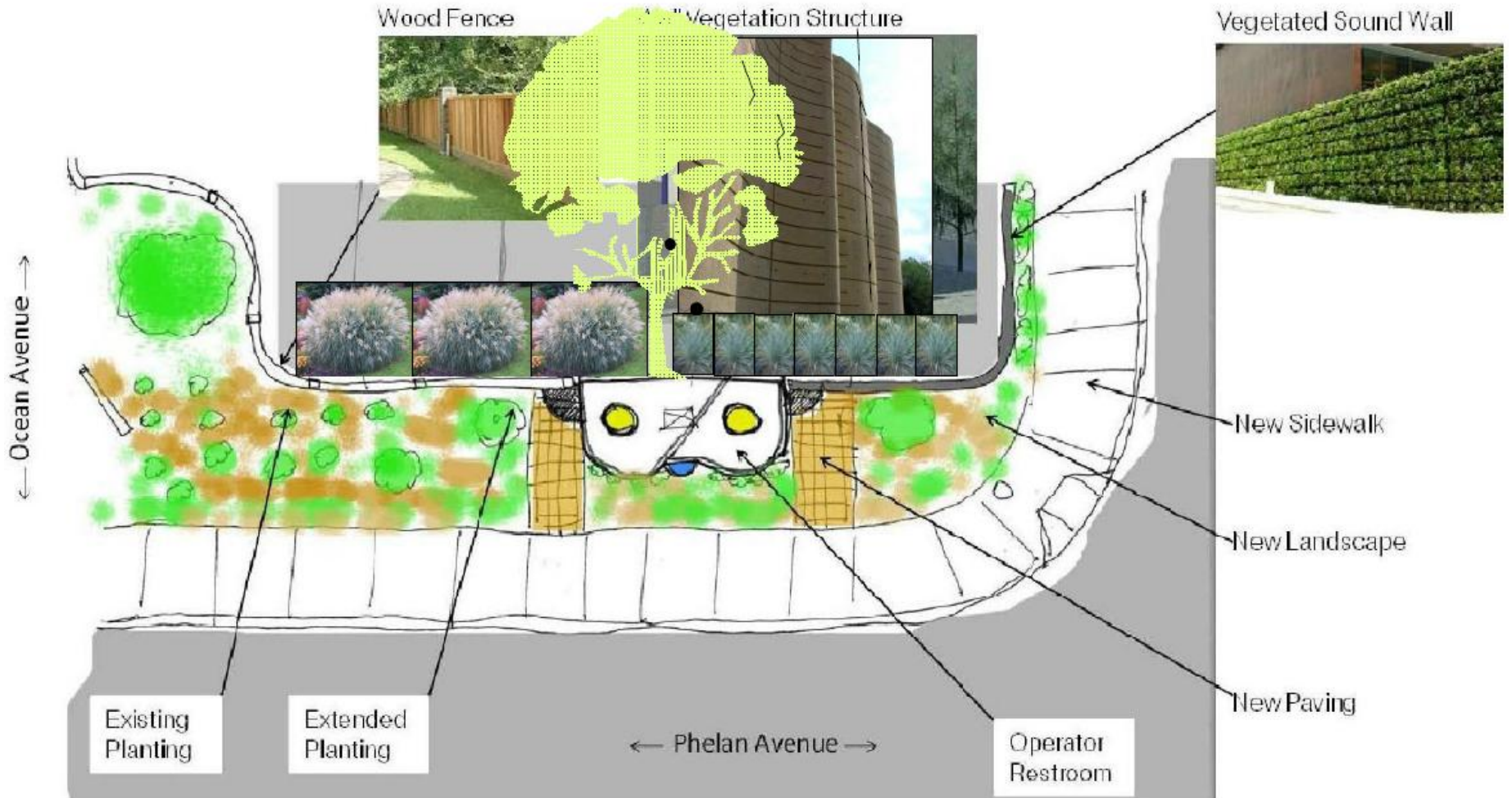


Section B-B



Section C-C

Site Plan Rendering



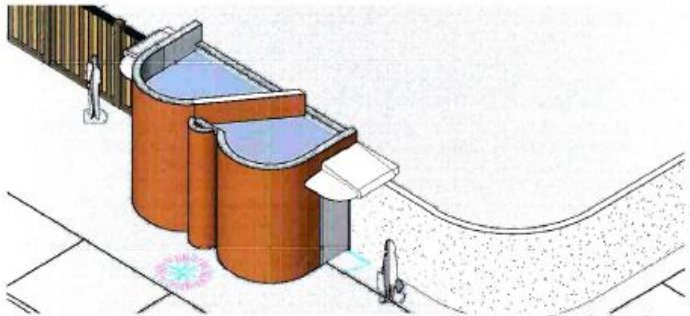
Perspective Rendering



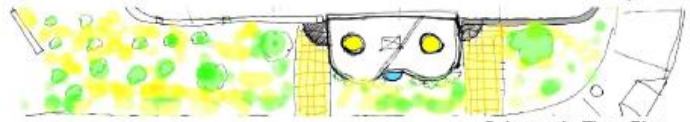
Perspective Rendering from South



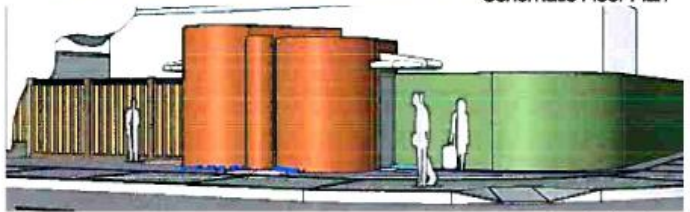
Construction Materials



Rendering 1



Schematic Floor Plan

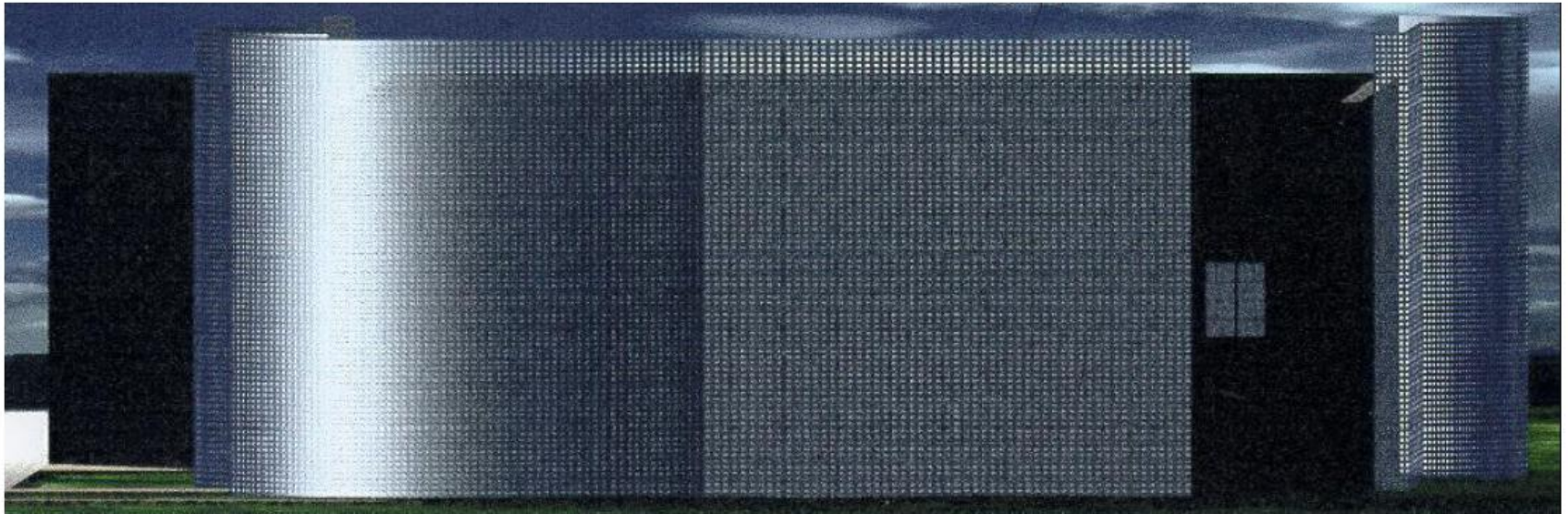


Rendering 2

Materials of construction Metals Panels



Construction Materials



Materials of construction Perforated Metals Panels

SCHEDULE

Activity	Projected date	Duration
Complete Detail Design	May 2012	8 months
Bid and Award	August 2012	3 months
Construction Start	November 2012	8 months
Project Closeout	November 2013	4 months

Thank you!

Discussion and Questions