



HPC / PLANNING REVISION



WASHINGTON SQUARE CONVENIENCE STATION

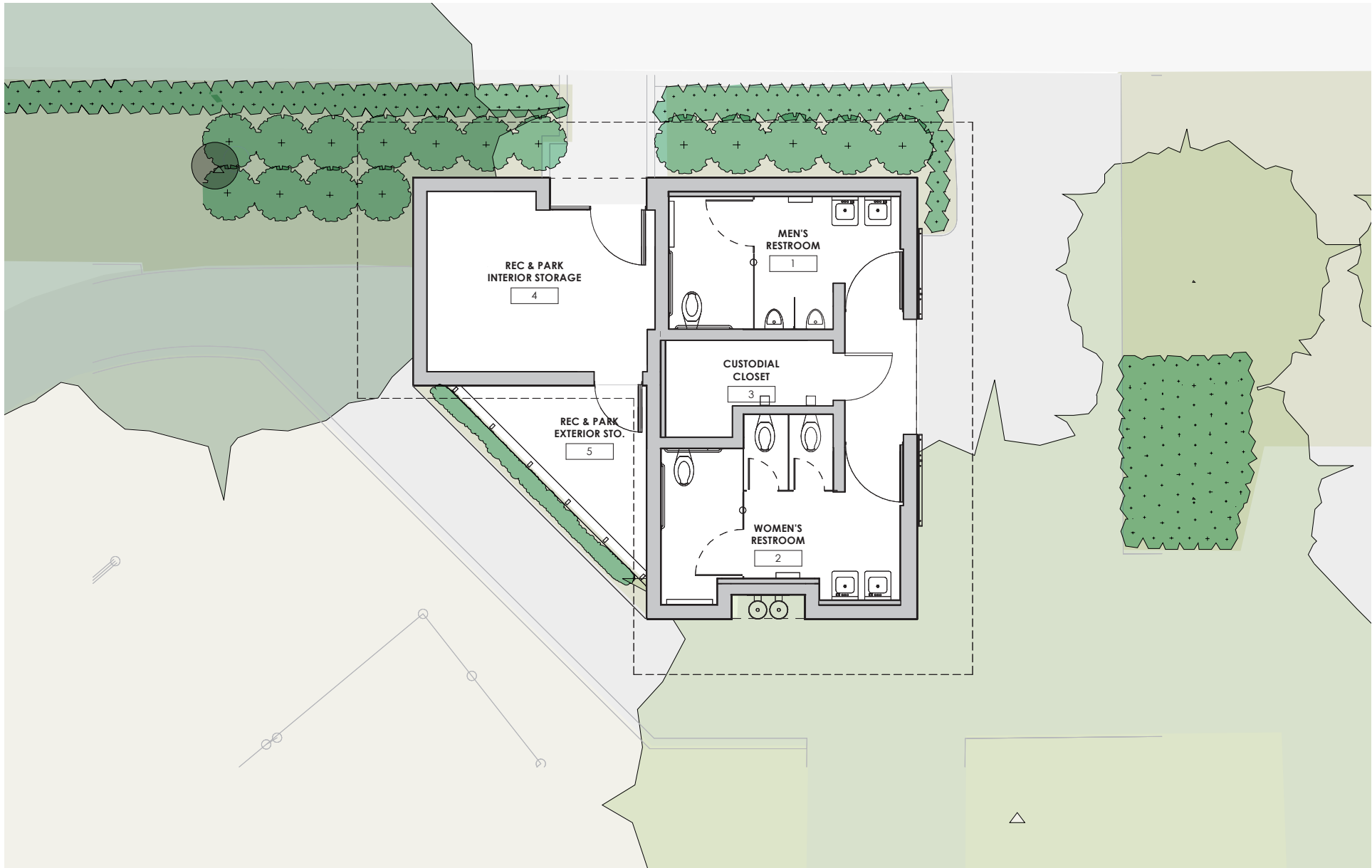
PAULETT TAGGART

A R C H I T E C T S

SFDPW - BDC - LANDSCAPE ARCHITECTURE

AUGUST 13, 2012





HPC / PLANNING REVISION



# WASHINGTON SQUARE CONVENIENCE STATION

**PAULETT TAGGART**

A R C H I T E C T S

SFPDW - BDC - LANDSCAPE ARCHITECTURE

AUGUST 13, 2012



ZINC ROOF

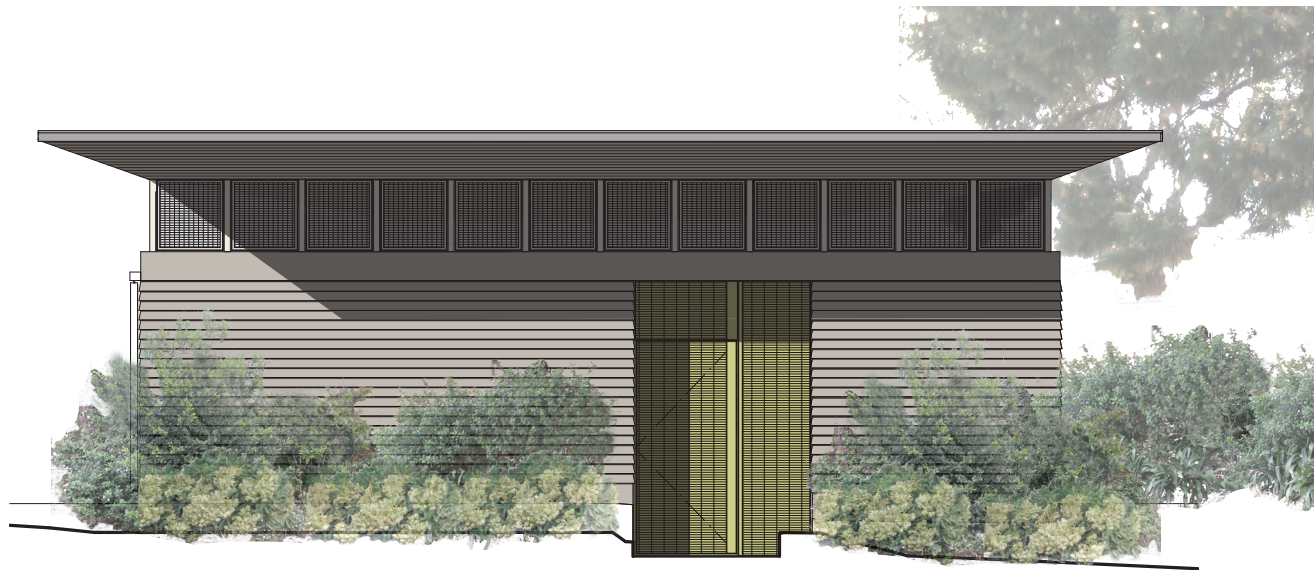
CEDAR SOFFIT

STAINLESS STEEL MESH  
SCREEN @ CLERESTORY

CONCRETE WALL  
W/ ARCHITECTURAL  
SHIPLAP TEXTURE

STEEL BAR GRATE  
SLIDING GATE

TILE ACCENT WALL



HPC / PLANNING REVISION



WASHINGTON SQUARE CONVENIENCE STATION

PAULETT TAGGART

A R C H I T E C T S

SFDPW - BDC - LANDSCAPE ARCHITECTURE

AUGUST 13, 2012



Edwin M. Lee, Mayor  
Philip A. Ginsburg, General Manager

## Memorandum

To: Tim Frye, City Planning

From: Mary Hobson

Date: October 10, 2013

RE: Washington Square Restroom Replacement

Please accept this memo as confirmation of our receipt of your emails dated 7/31/13 and 8/30/13 to Paulett Taggart regarding the Historic Preservation Commission's consideration of our request to alter the design of the Washington Square Restroom at the request of the Arts Commission's Civic Design Review Committee.

In your email you relayed to us that after careful consideration and consultation with your Commission, it is the Planning Department's position that the recess over the primary restroom entrance is needed to break up the massing of the building, a key factor in determining the design's appropriateness in the context of the landmark site. You informed us that should we wish to pursue making this change to the park-facing building façade, staff would require that we investigate alternative methods to reduce the building mass. You further wrote that the removal of the recess over the maintenance door was found to be a minor change to the project, and that you felt that removal of the recess at that entrance would be in keeping with the intent of the HPC approval.

Attached please find a copy of the final design for the project. As you will see, the final project design has retained the recess over the primary entrance to the restrooms and removed the recess over the maintenance door.

I appreciate your consideration and assistance.

