

# SAN FRANCISCO RECREATION & PARK DEPARTMENT ALAMO SQUARE - STAND ALONE RESTROOMS



## SITE LOCATION



## DESIGN CONCEPT:

THE GOAL OF THE PROJECT IS TO CREATE A "SCULPTURAL" LIKE STRUCTURE WITH THE USE OF SIMPLE FORM GEOMETRY (ARCHIMEDEAN SPIRAL) THAT ARTICULATES THE MODERN PLAYGROUND DESIGN, BUT THAT ALSO INTEGRATES THE HISTORICAL CONTEXT OF THE PARK WITH THE USE OF SUBTLE TEXTURES AND INTEGRAL COLOR.

## SCOPE:

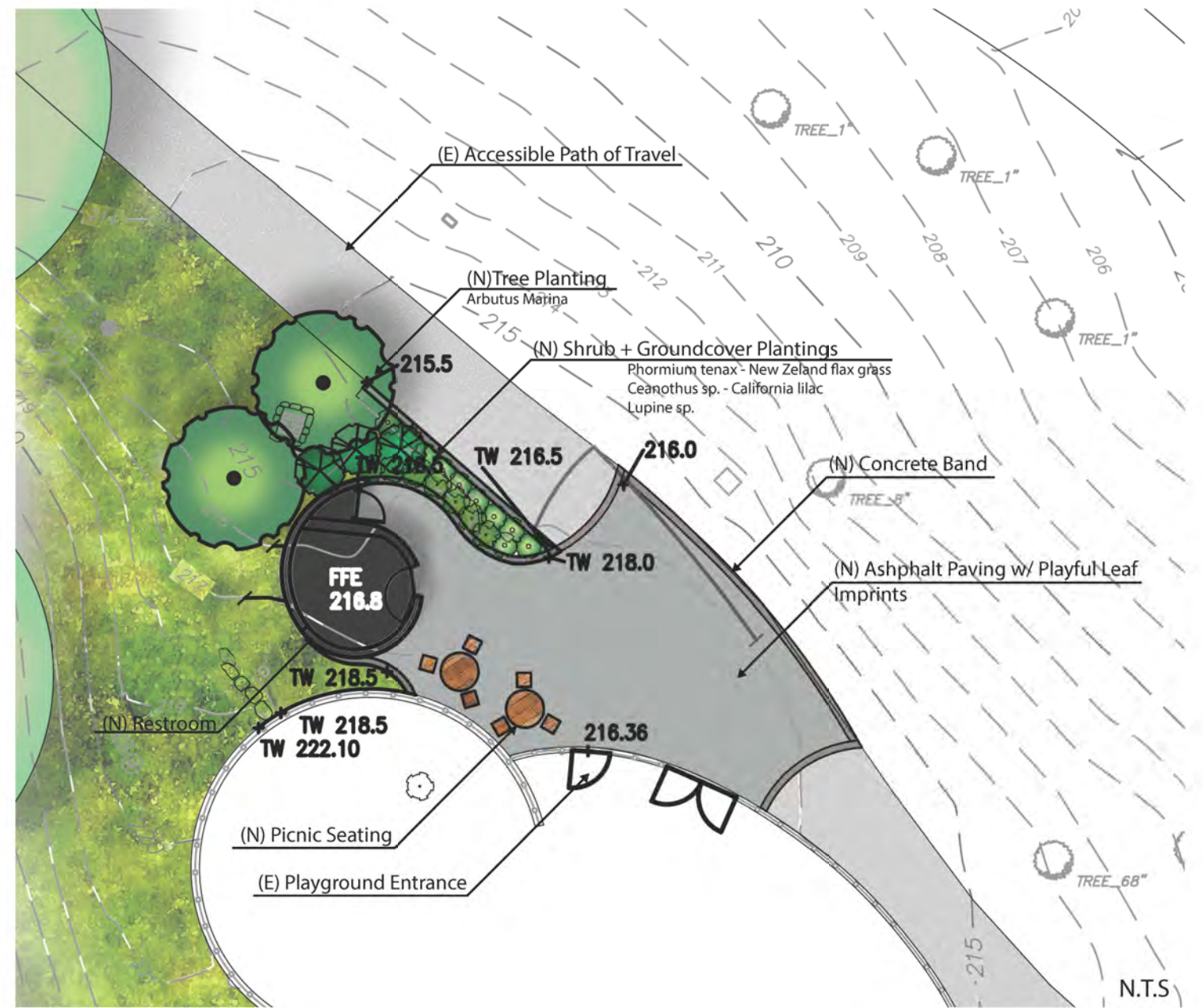
THE SAN FRANCISCO REC & PARK DEPARTMENT IS PROPOSING THE CONSTRUCTION OF A STAND ALONE RESTROOM STRUCTURE ADJACENT TO THE CHILDREN'S PLAY AREA IN THE ALAMO SQUARE PARK.







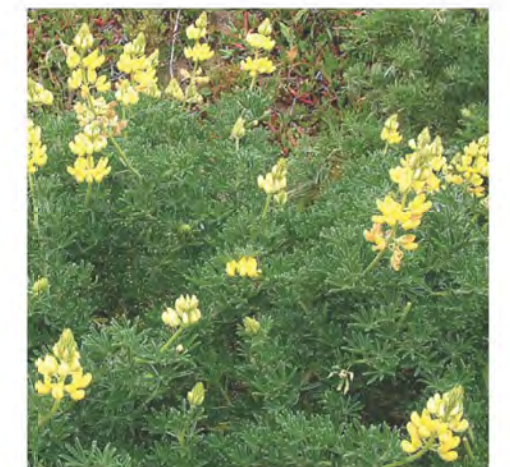




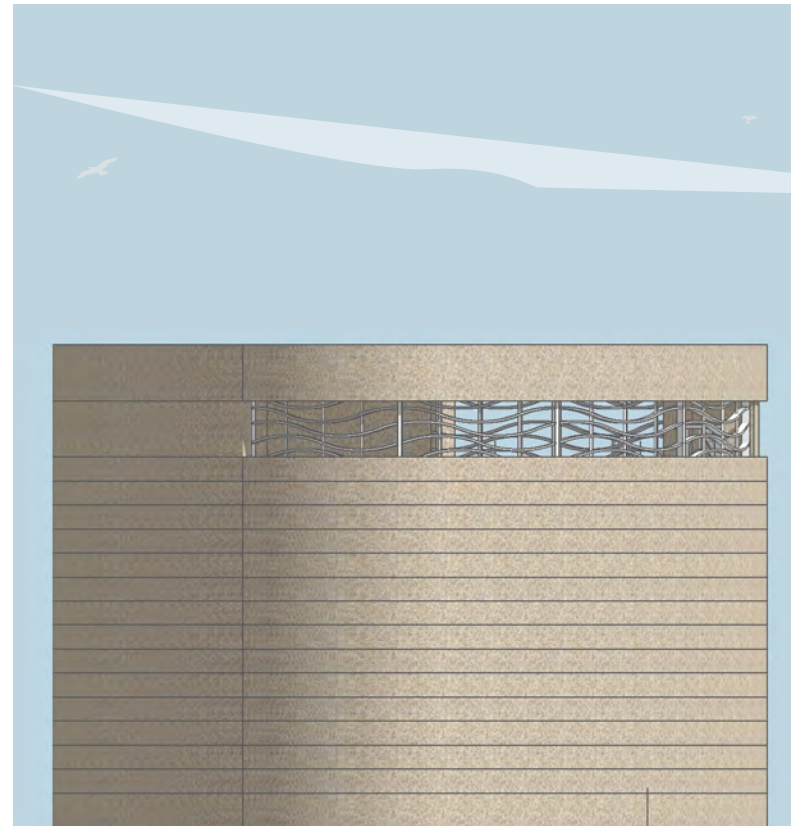
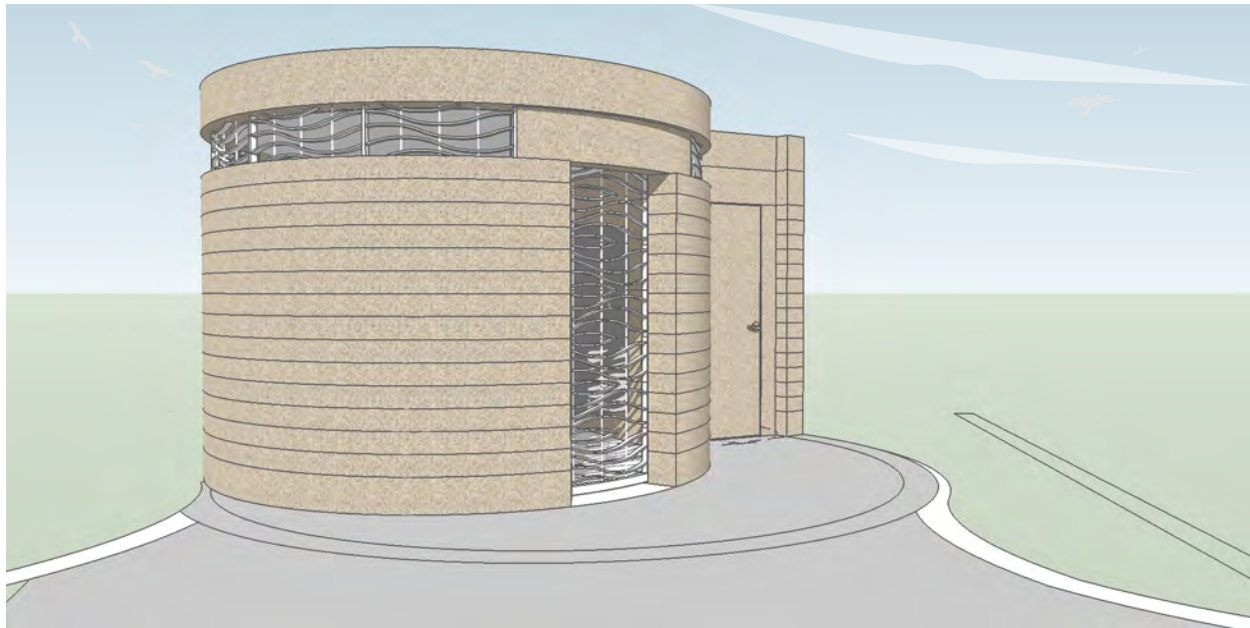
Arbutus Marina



Ceanothus Sp.



Lupine Sp.



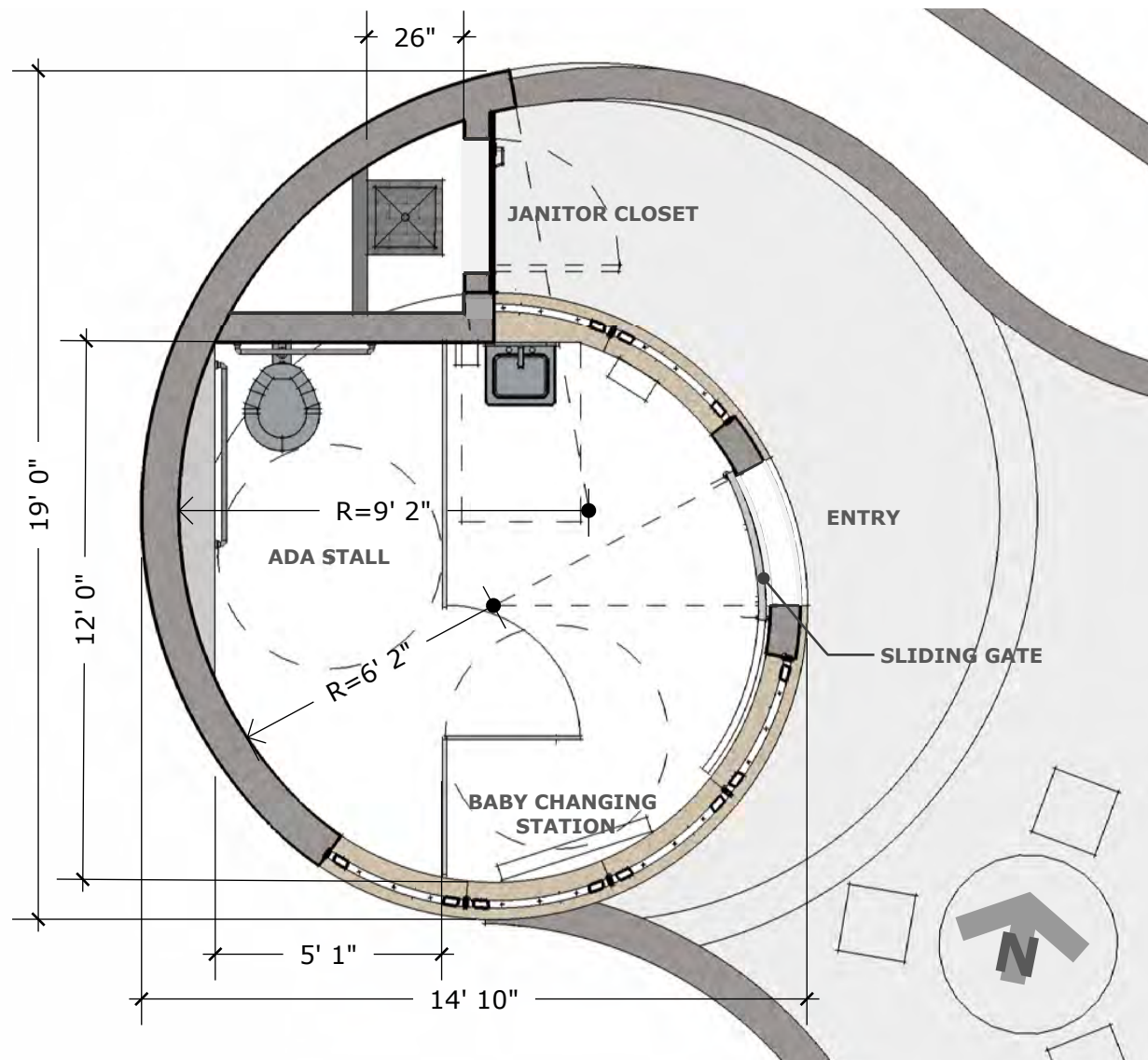
**SOUTH ELEVATION**

ESC: 1/4



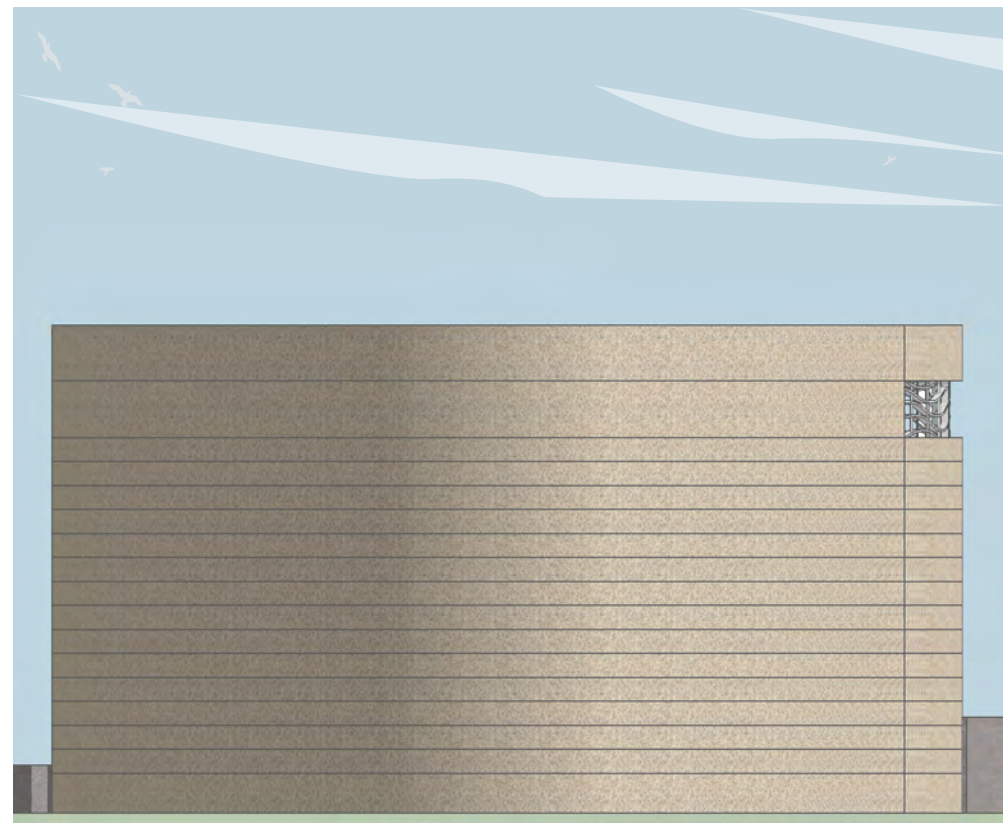
**EAST ELEVATION**

ESC: 1/4



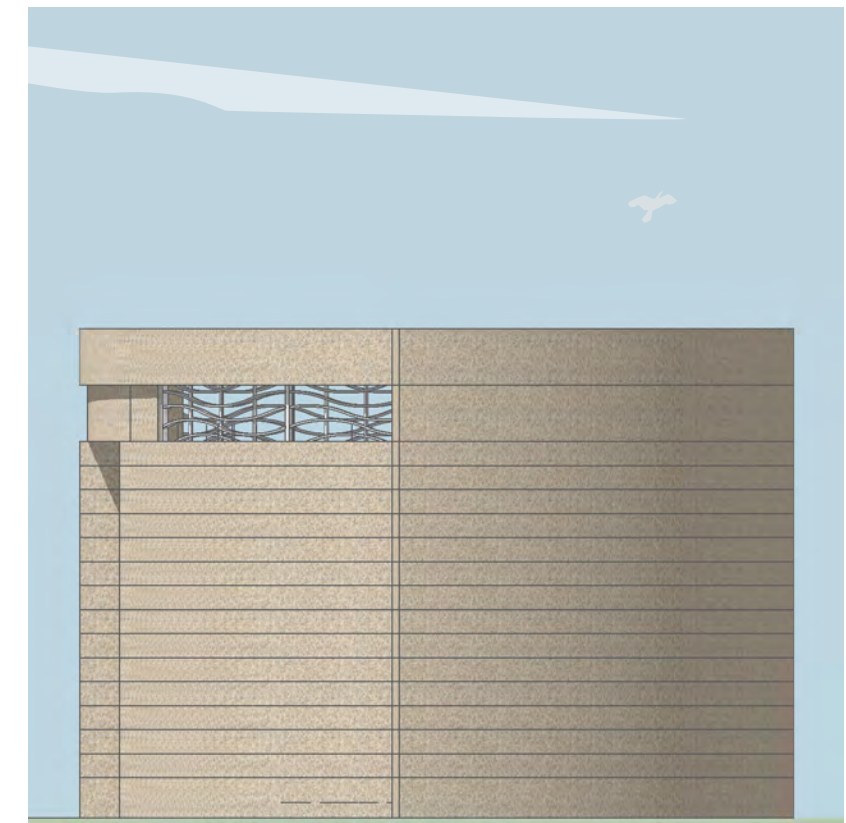
**FLOOR PLAN**

ESC: 1/4



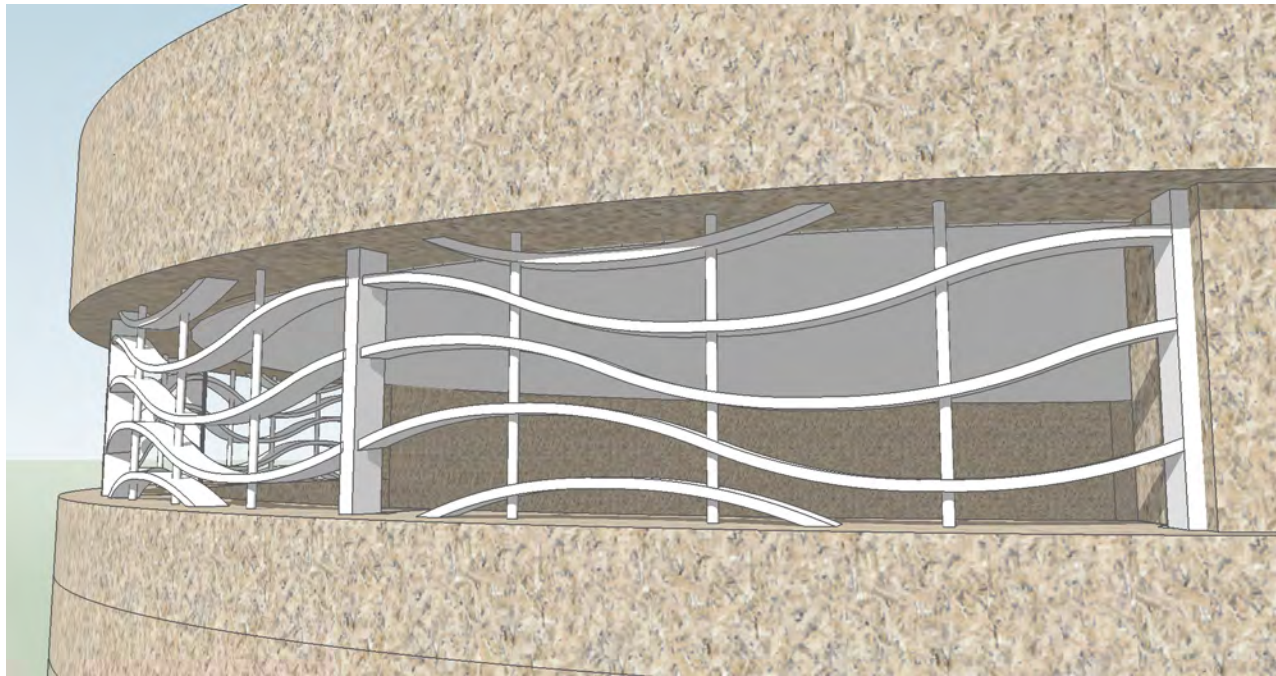
**WEST ELEVATION**

ESC: 1/4

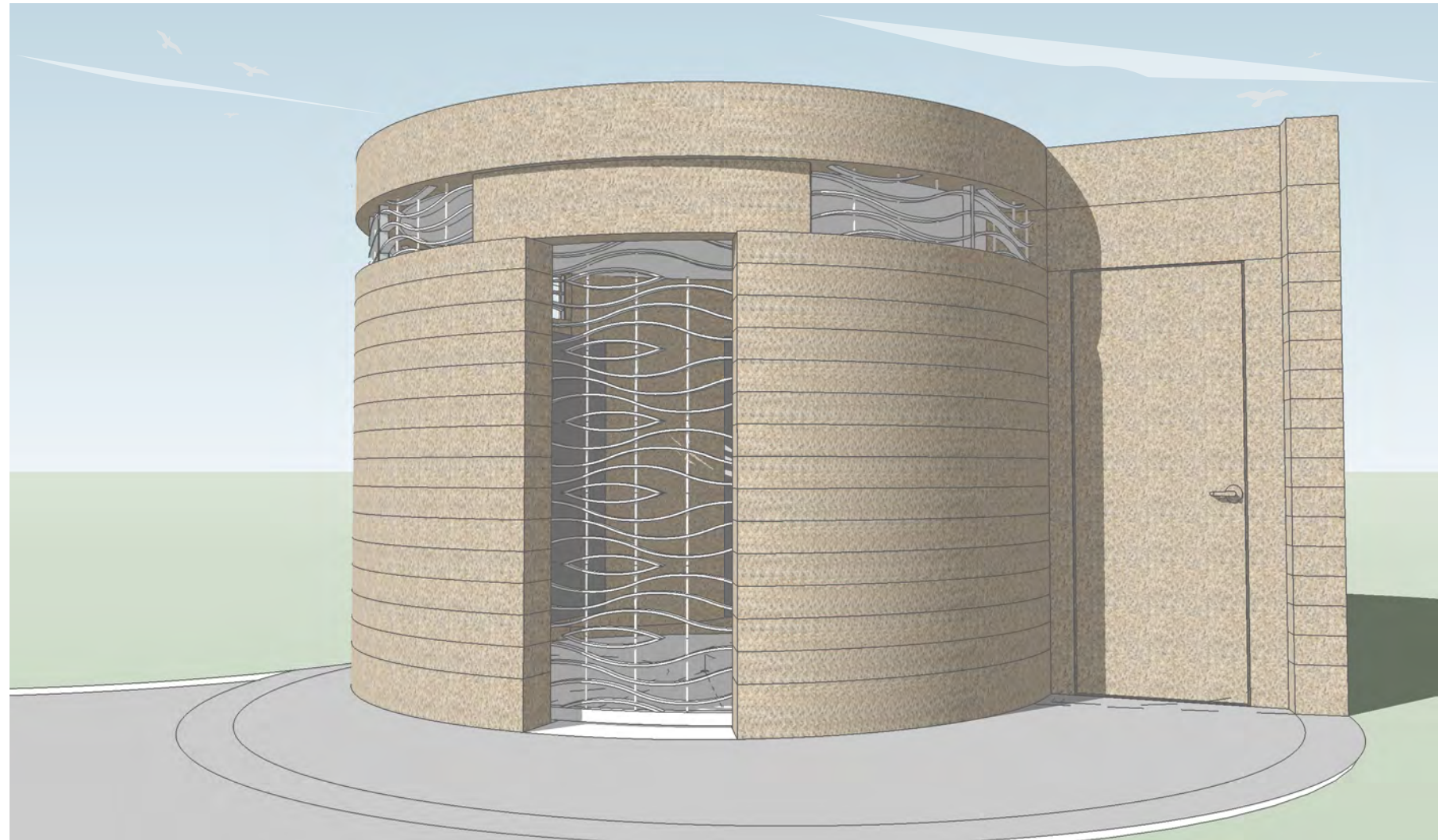
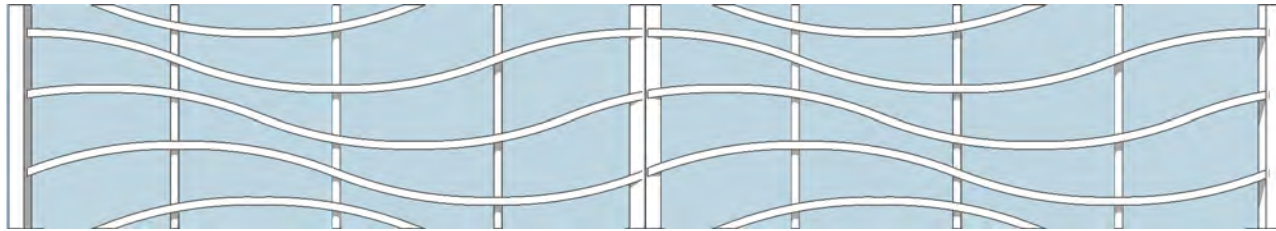


**NORTH ELEVATION**

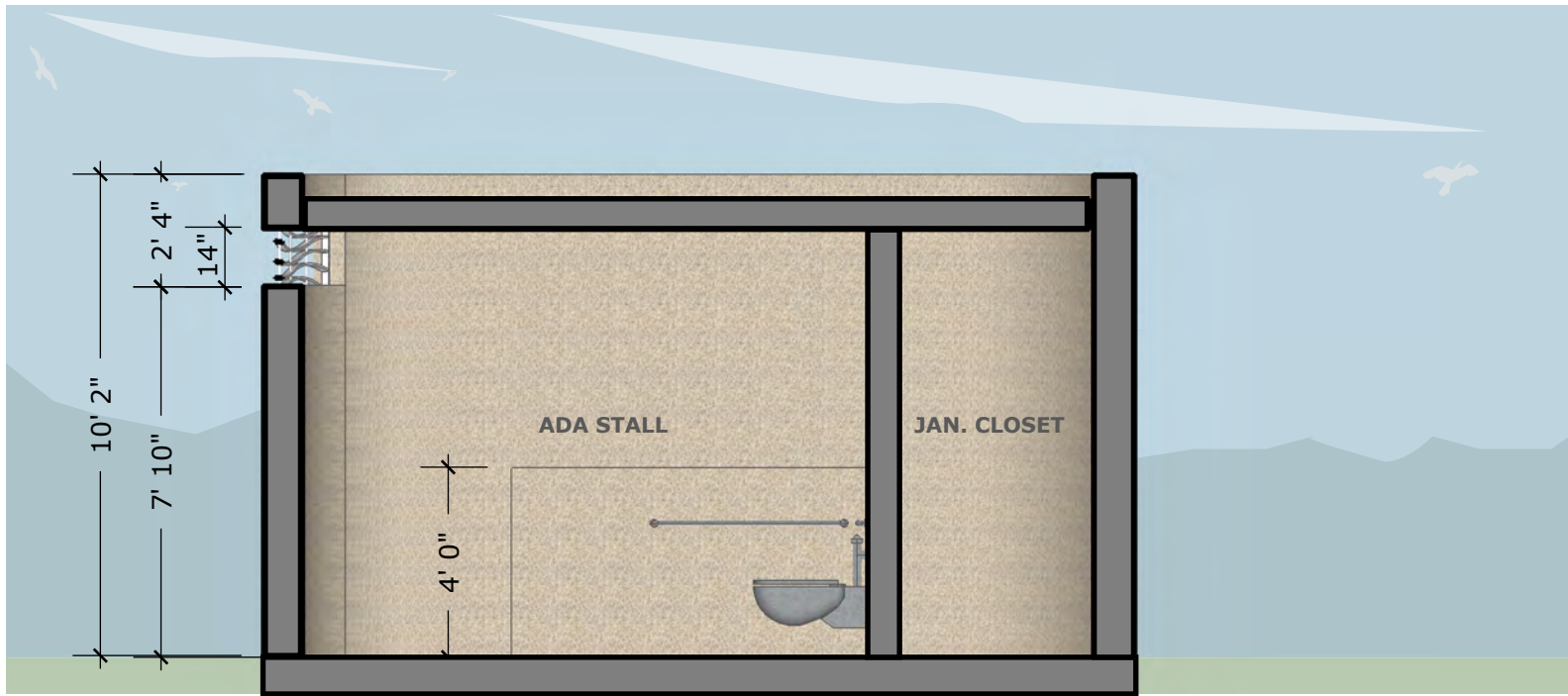
ESC: 1/4



**METAL GRILL DETAIL**

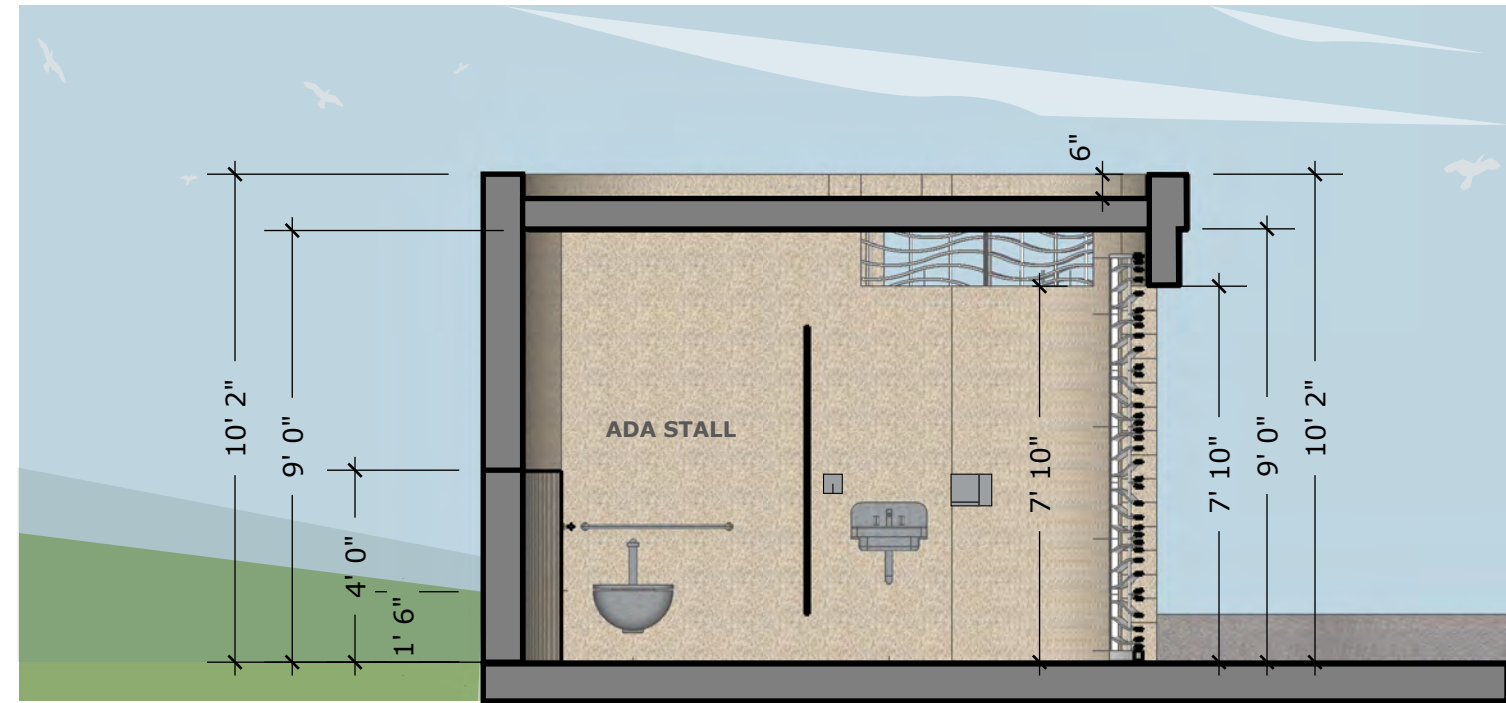


**PERSPECTIVE**



**LONGITUDINAL SECTION**

ESC: 1/4



**TRANSVERSE SECTION**

ESC: 1/4



