



## 17<sup>th</sup> & Folsom Park

Civic Design Review  
Phase 2- Preliminary Review  
September 2012



Mary Hobson, Project Manager  
*Recreation and Park Department*

John Dennis, Landscape Architect  
Andrea Alfonso, Katia Dayyat  
*Department of Public Works*

Sarah Dennis-Phillips  
*Planning Department*

Oscar Grande  
*PODER*

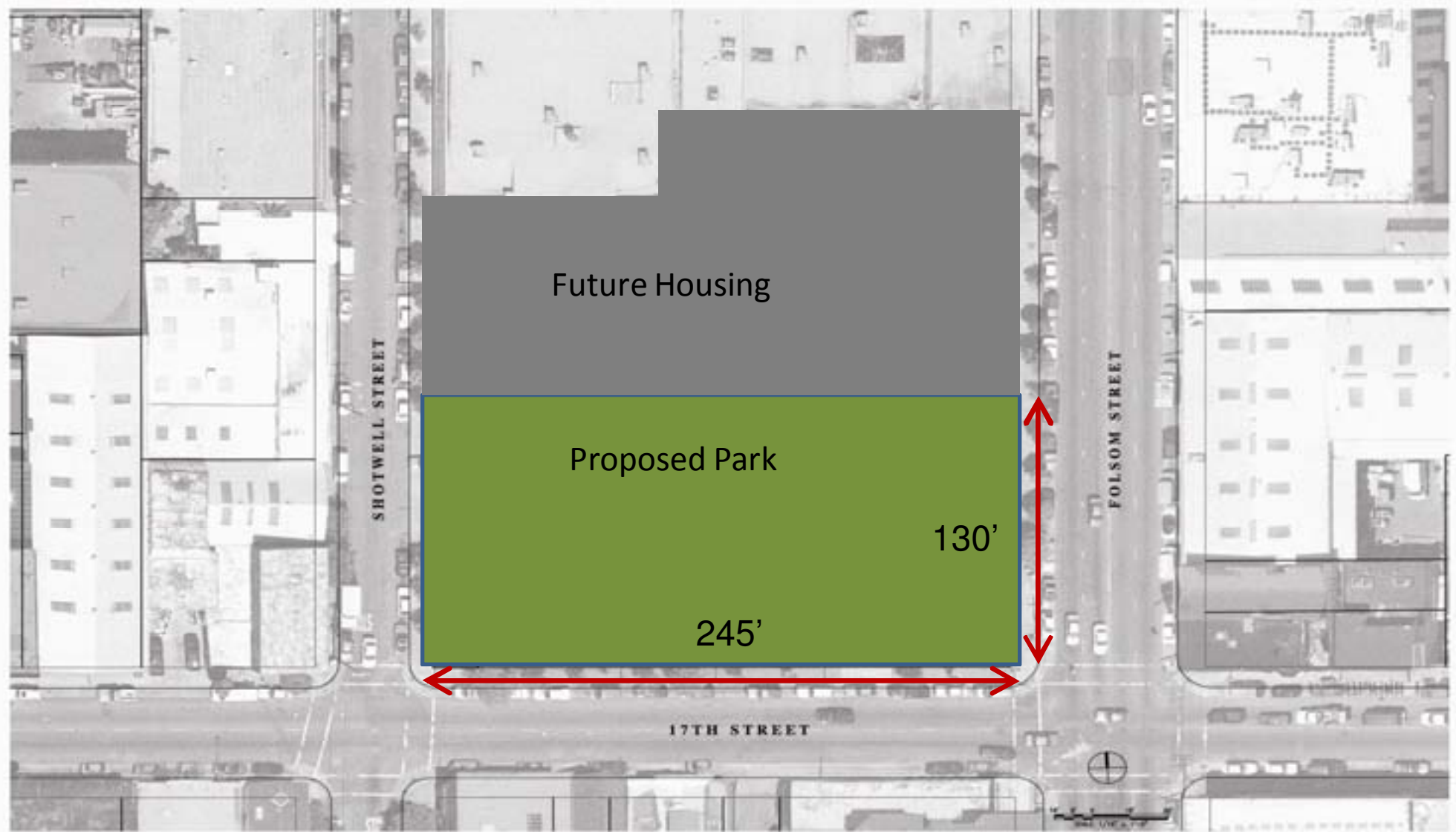




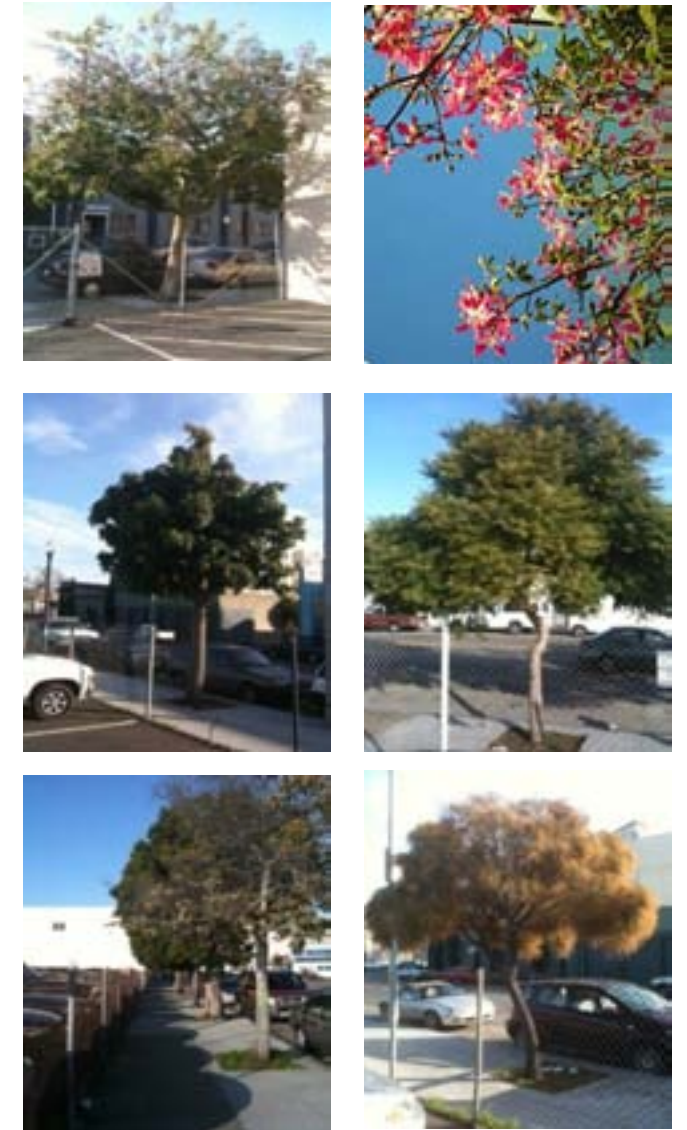
### Outreach

- Partnering with People Organizing to Demand Environmental and Economic Rights (PODER)
- Community outreach began in August 2009 and continued through July, 2012.
- 15 community meetings with over 350 participants

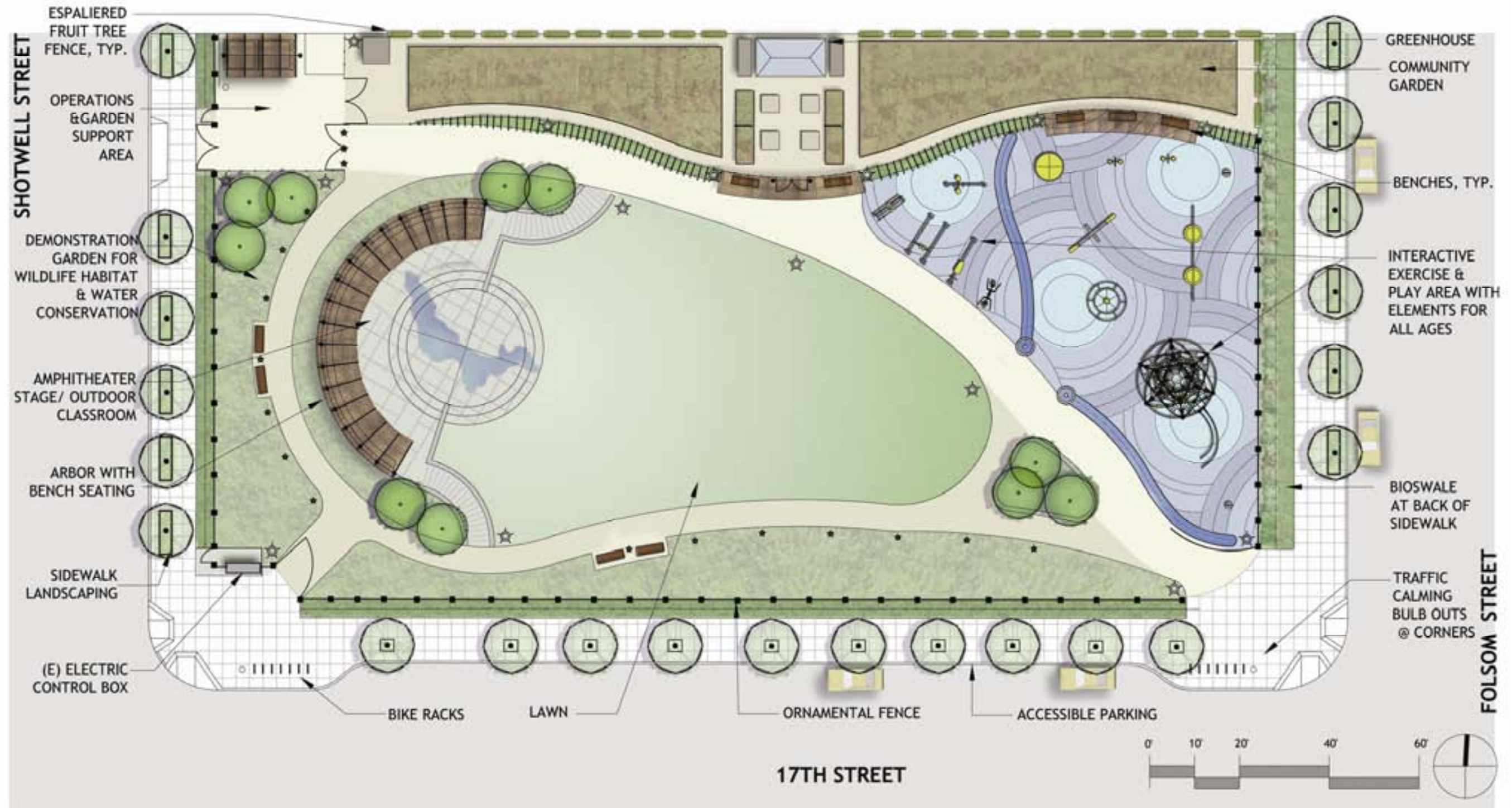
Community Meeting 1 [on-site]	8/15/2009	52 participants
Community Meeting 2 [Spanish Speakers]	1/12/2010	12 participants
Community Meeting 3	1/23/2010	50 participants + 20 children
Community Meeting 4 [on-site]	2/6/2010	60+ participants
Community Meeting 5	3/11/2012	36+ participants
Focus Group Meetings, 9 Total	Between 12/09-1/10	5-50 participants/mtg.
Community Meeting 6	7/26/2012	50 + participants



Site Zoning









# Proposed Schedule

**Spring 2012 / Planning**  
Finalize the Concept Plan

**Spring 2012 –Spring 2013/ Design**  
Detailed design of the Park Site  
Community Engagement Planning Process

**Spring 2013/ Bid & Award**  
Contract the work to build the park

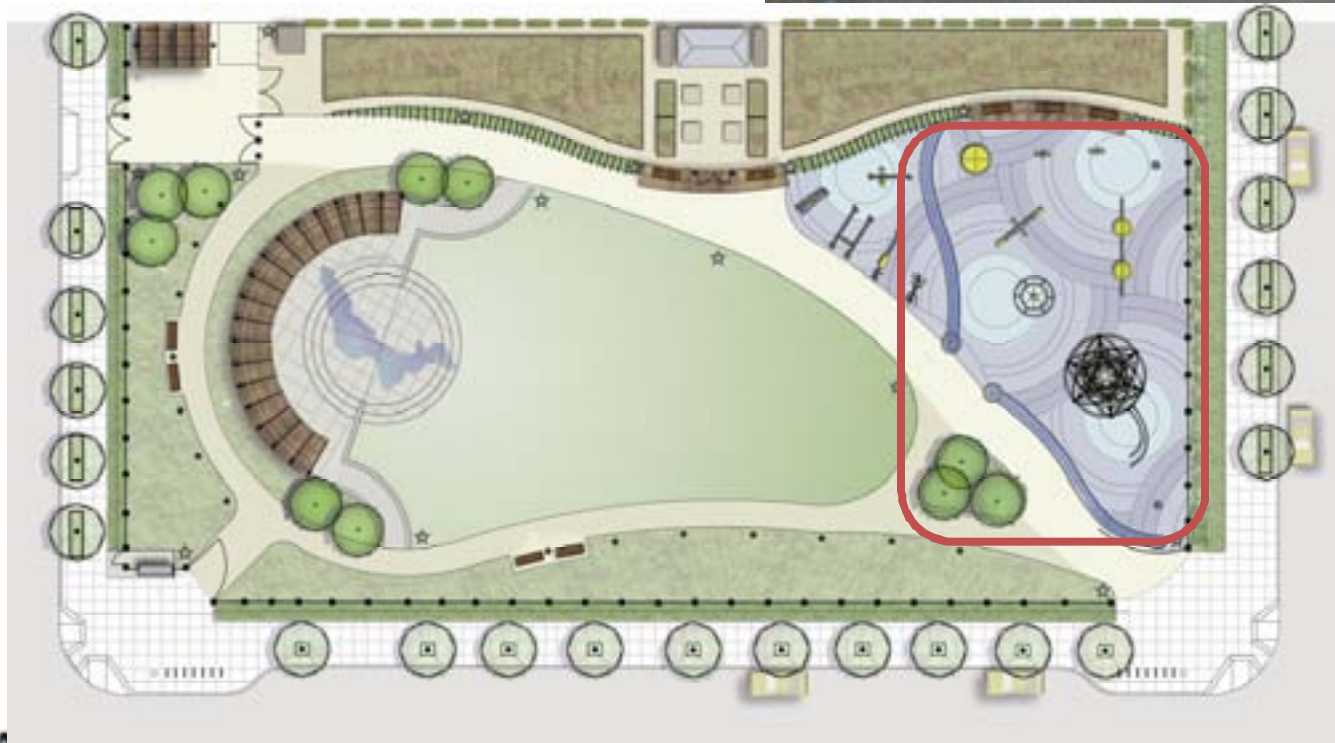
**Spring 2013-Spring 2014**  
Site Remediation and Construction  
Community Garden Process

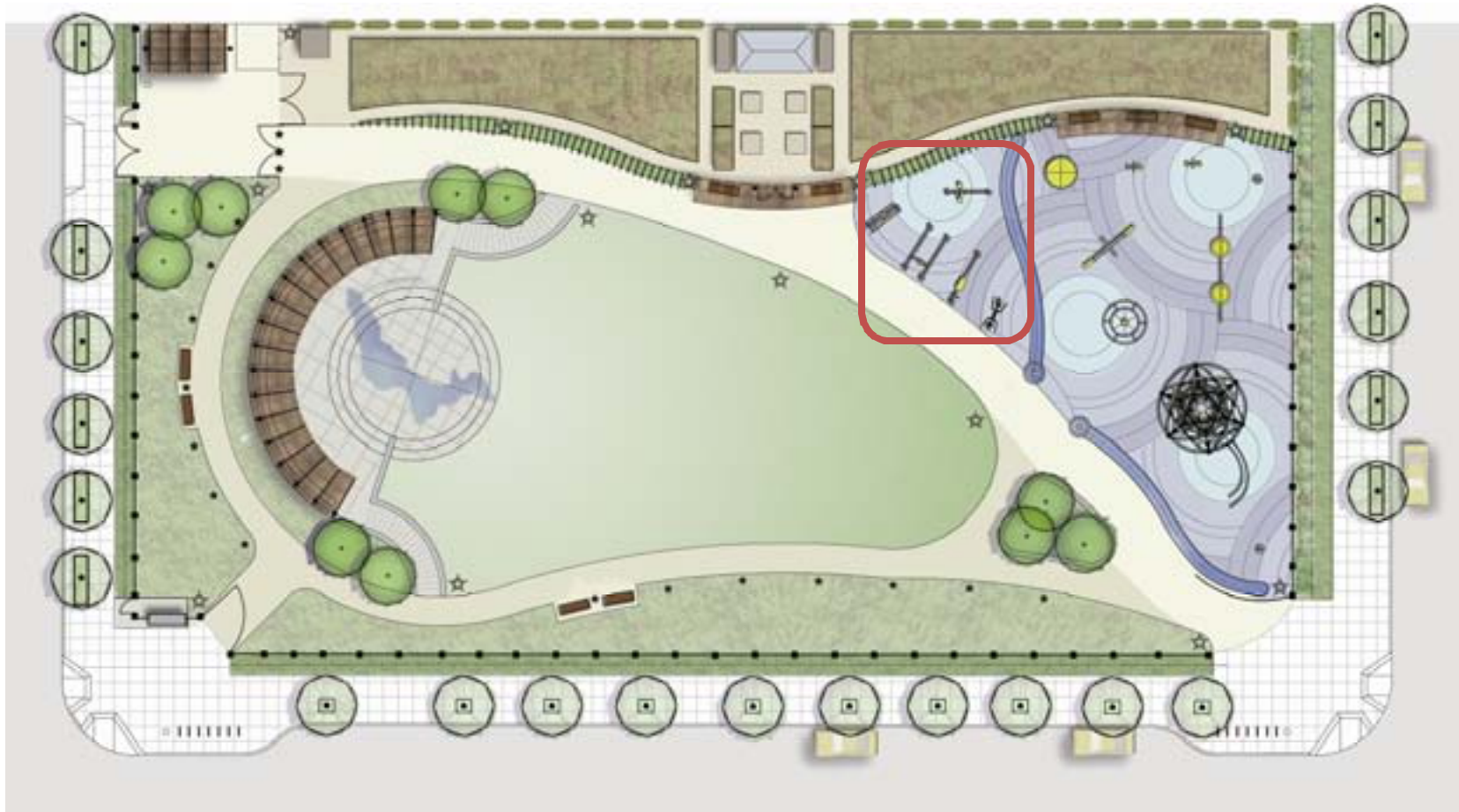
**Spring 2014**  
Park is Built!













**Espalier Fruit Trees**

- Malus domestica* 'Anna'
- Malus domestica* 'Dorsett Golden'
- Prunus armeniaca* 'Golden Kist'
- Prunus armeniaca* x *domestica* ssp. *aprium*
- Pyrus communis* 'Hood'
- Pyrus* x *Ya Li*

**Evergreen Hedge**

- Citrus* spp.

**Trees**

- Prunus serrulata*

**Vine**

- Vitus Vinifera*

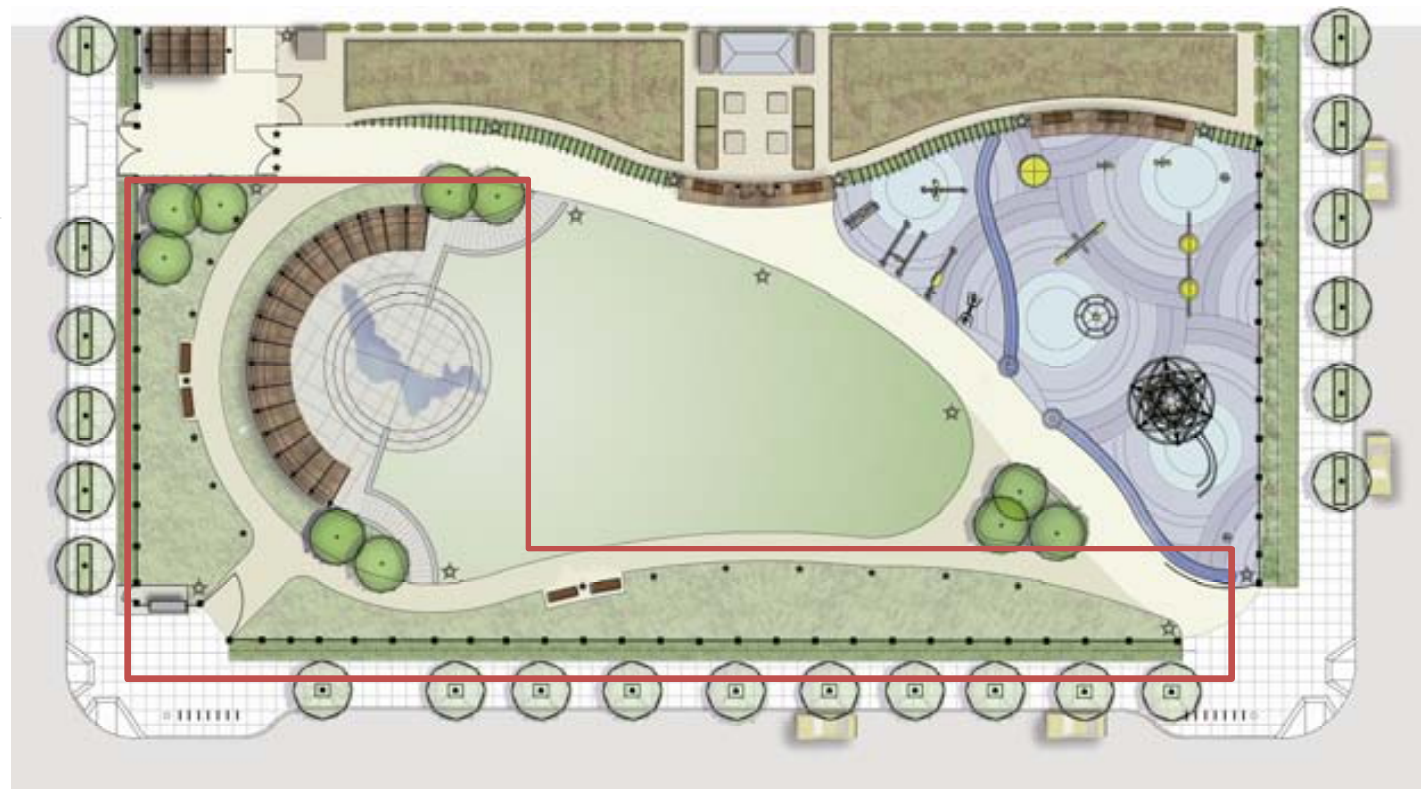
- Apple
- Apple
- Apricot
- Flavor Delight Aprium
- Hood Pear
- Ya Li Pear (Duck Pear)
- Flavorella Plumcot

- Citrus Species

- Cherry Tree

- Grape





**Bird and Butterfly Garden**

- Achillea millefolium*\***
- Aloe spp.*
- Aquilegia Formosa*
- Arbutus unedo*
- Aristolochia californica*\***
- Asclepias tuberosa*
- Buddleia*
- Cuphea Llavea*
- Diascia species*
- Eriogonum fasciculatum*
- Erysimum 'Bowles Mauve'*
- Lavandula andgustifolia*
- Lupinus arboreus*
- Mimulus aurantiacus*\***
- Nepta cataria/ grandiflora*
- Penstemon heterophyllus*
- Prunus illicifolia*
- Rhamnus Californica*\***
- Salvia spp.\****
- Salvia spaetheca*\***
- Verbena bonariensis*

**Yarrow**

- Aloe
- Columbine
- Strawberry Tree
- Dutchman's Pipevine**
- Milkweed
- Butterfly Bush
- Bat Faced Cuphea
- Twinspur
- Buckwheat
- Wallflower
- Lavander
- Lupine
- Sticky Monkey Flower**
- Catmint
- Penstemon
- Hollyleaf Cherry
- Coffeeberry**
- Sage**
- Humming Bird Sage**
- Verbena

\* Denotes CA native





**Bio Swale Plants**

- Imperata cylindrica
- Muhlenbergia rigens
- Festuca californica
- Calystegia purpurata
- Koeleria macrantha
- Syrinchium bellum

- Japanese Blood Grass
- Deer Grass
- California Fescue
- Morning Glory
- Prairie Junegrass
- Blue Eyed Grass

**Sidewalk Planters**

- Anigozanthus Hybrids
- Arabis Blenpharophyllum
- Brachychiton spp.
- Chorisia speciosa
- Dietes tricolor
- Phromium 'Jack Pratt'
- Rapheolepis 'Ballerina'

- Kangaroo Paw
- Rock Rose Crest
- Flame Tree
- Silk Floss Tree
- Fortnight Lily
- Flax
- Indian Hawthorne

**Evergreen Shrub**

- Elaegnus spp.

N.C.N

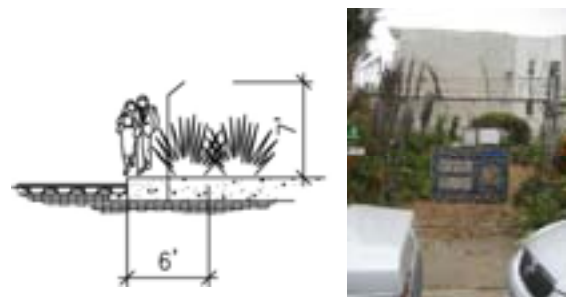


Artist: Carmen Lomas Garza

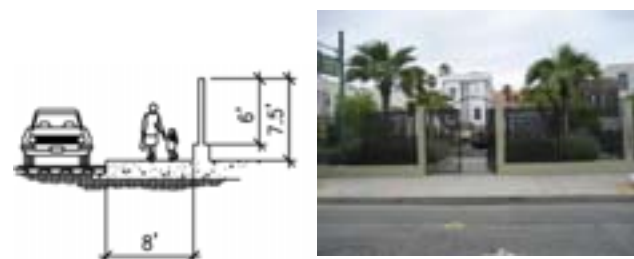




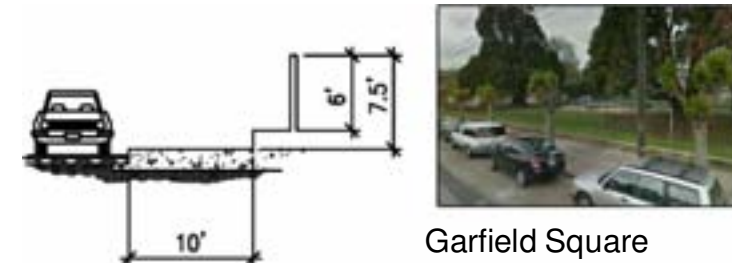
Dolores Park at Dolores St.



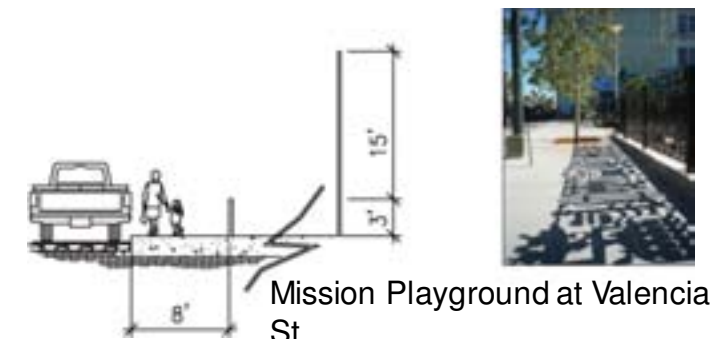
Dearborn Community Garden at Bird



KidPOWER Park at Hoff St.



Garfield Square



Mission Playground at Valencia St.



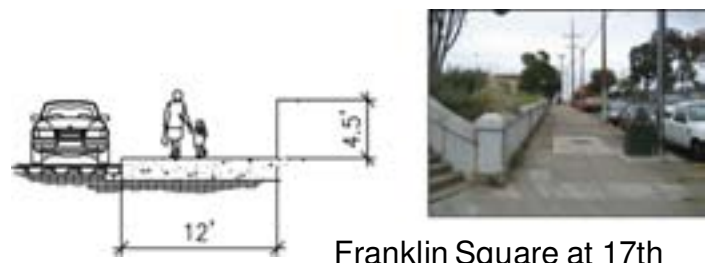
Dearborn Community Garden at Dearborn St.



Victoria Manolo Draves Park at Sherman St.



Jose Coronado Park at Folsom



Franklin Square at 17th



Potrero del Sol at San Bruno Ave.

### 8' Proposed Fence Height

#### Shotwell Street Section



#### Folsom Street Section



Alioto Park at 20th



J. Rolph Jr. Playground at Hampshire St



Alioto Park at Capp St.



Parque Ninos Unidos at Treat Ave.