

SFMTA - OPERATOR CONVENIENCE FACILITIES
CIVIC DESIGN REVIEW PHASE II
SEPTEMBER 04, 2012



DESIGN CRITERIA:

TEMPORARY/ PREFABRICATED FACILITIES

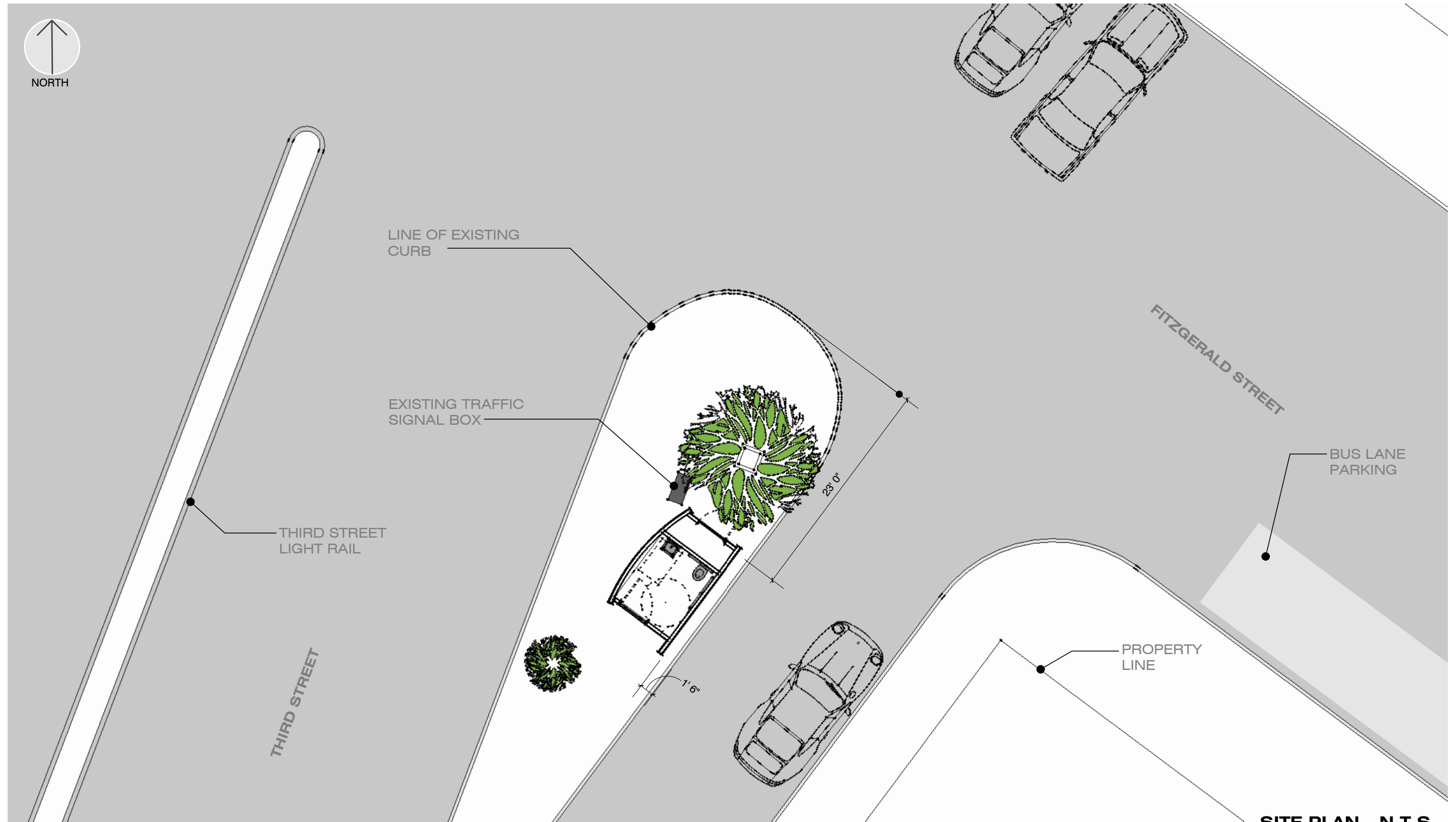
- ADA ACCESSIBLE
- DEPENDANT ON SERVICE VOLUME AT SPECIFIC LOCATIONS
- DIRECT CONNECTION TO CITY UTILITIES WITH THE POSSIBILITY OF RELOCATION IF TERMINAL LOCATION CHANGES

TWO PRIORITY LOCATIONS

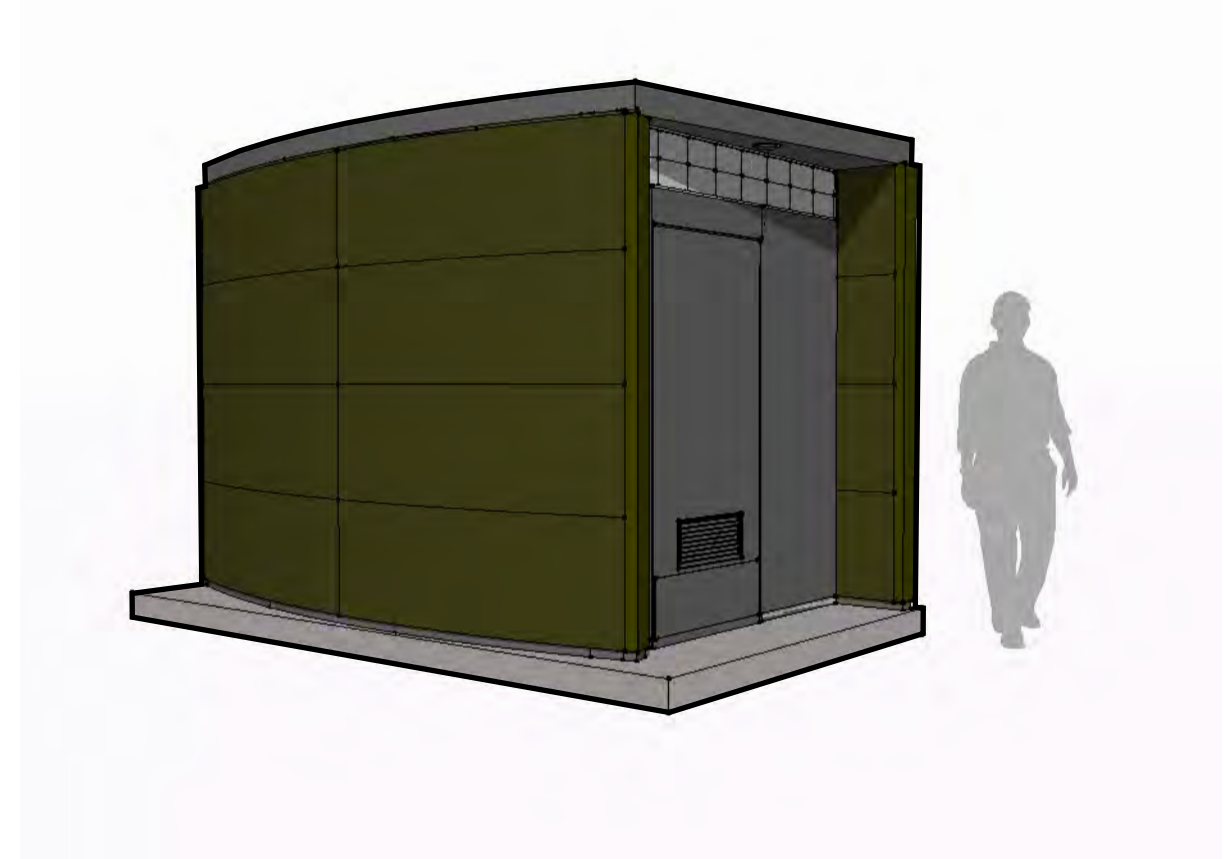
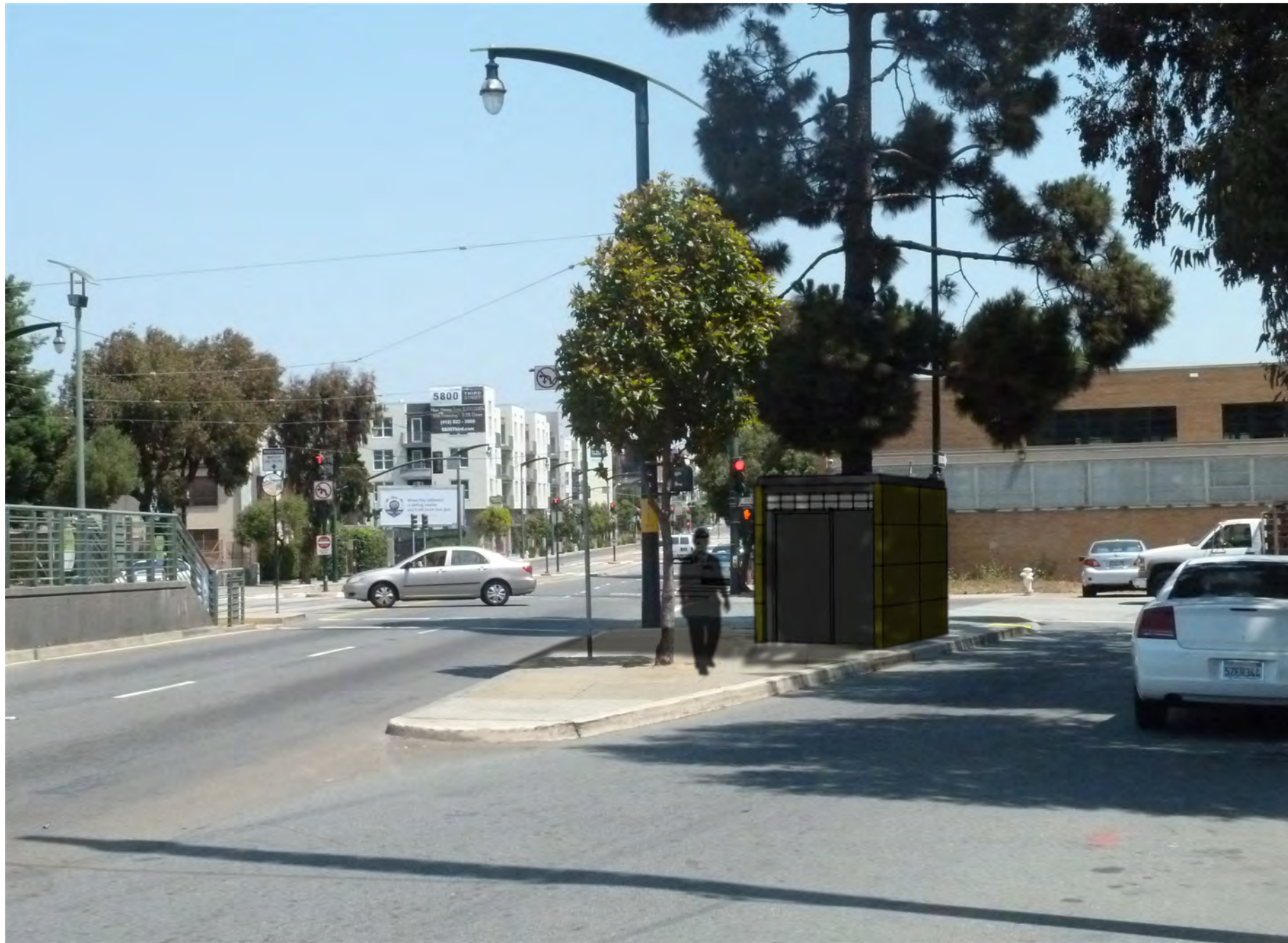
- #29 SUNSET - FITZGERALD AVENUE
- #33 STANYAN STREET

**TERMINAL #33 STANYAN STREET
HAMPSHIRE & CESAR CHAVEZ ST.**

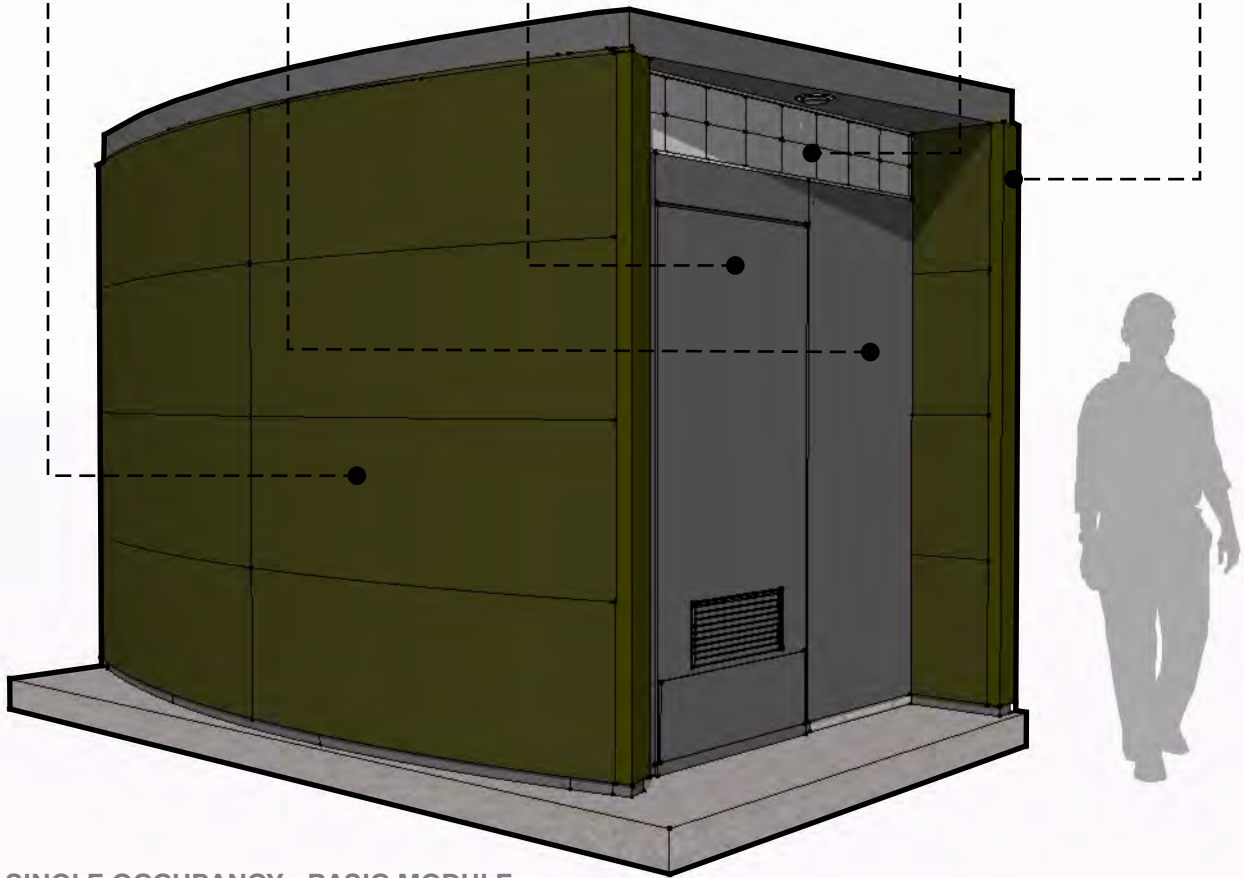
**TERMINAL #29 SUNSET
FITZGERALD & 3RD. ST.**



SITE PLAN - N.T.S.

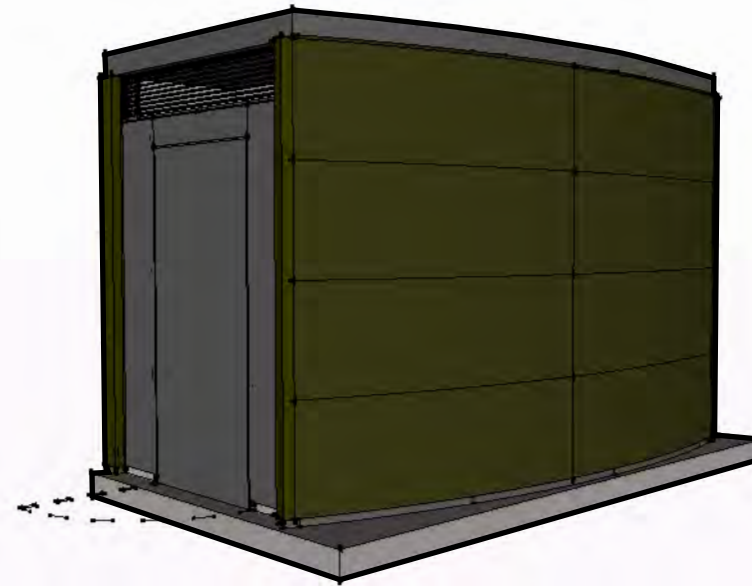


MATERIALS & COLOR SCHEME

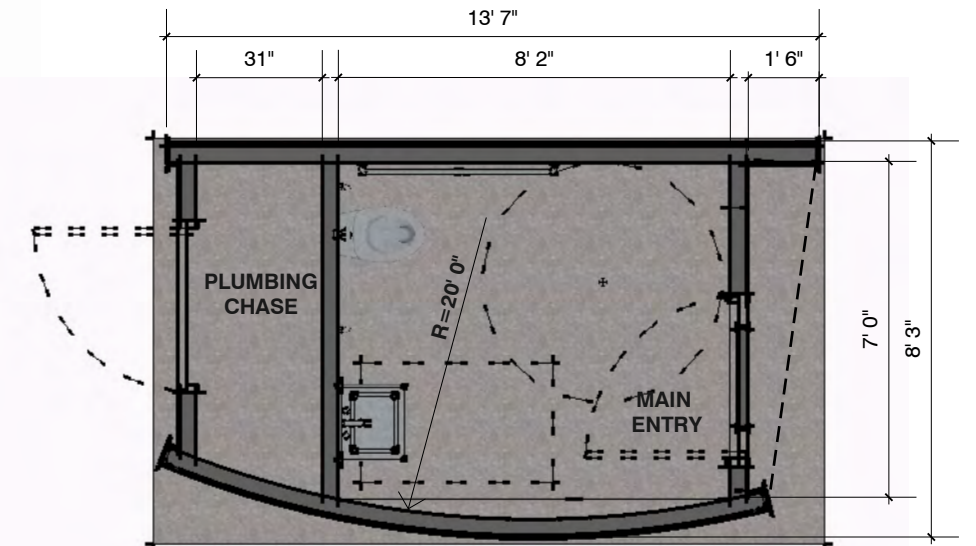


SINGLE OCCUPANCY - BASIC MODULE

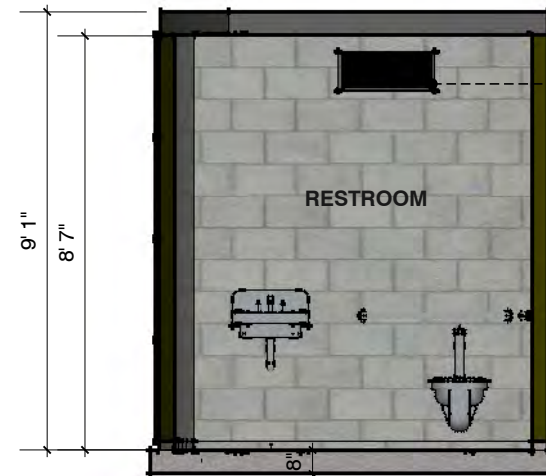
DESIGN OPTION



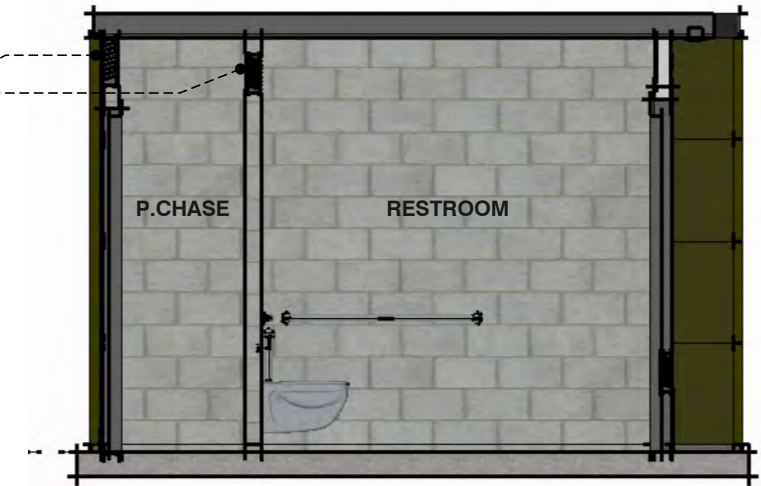
SINGLE OCCUPANCY - BASIC MODULE REAR VIEW



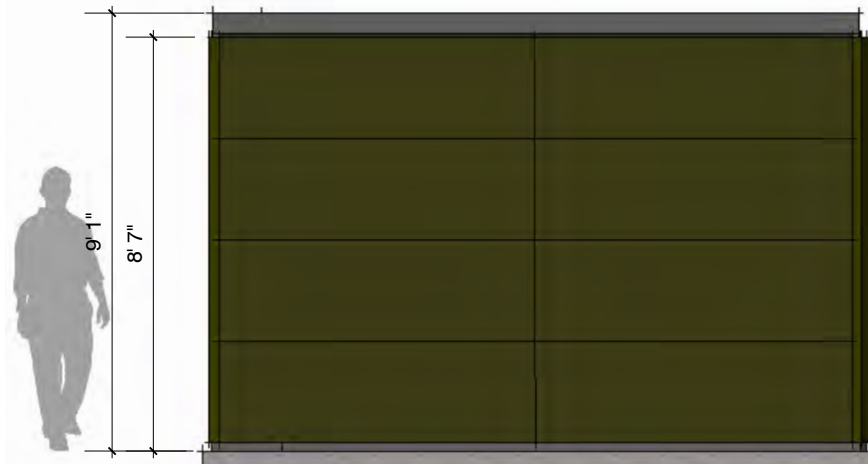
FLOOR PLAN - SINGLE OCCUPANCY - BASIC MODULE



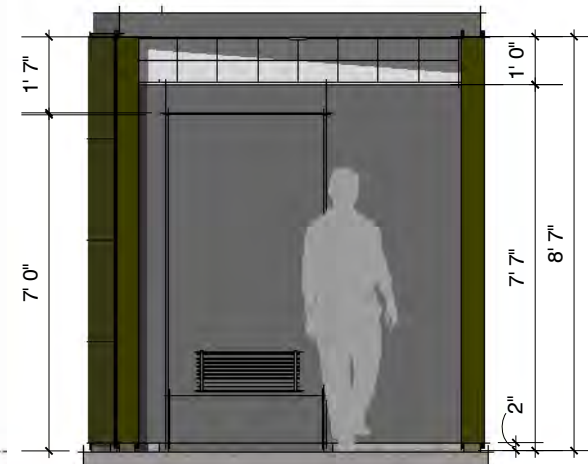
TRANSVERSE SECTION



LONGITUDINAL SECTION



RIGHT ELEVATION



FRONT ELEVATION

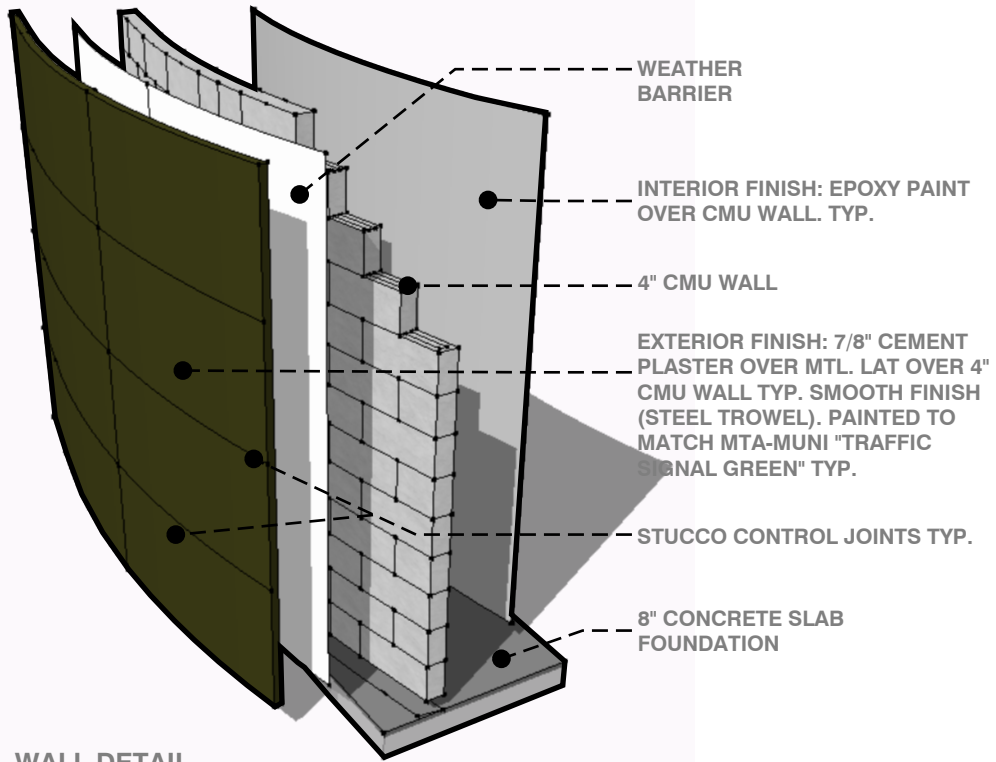


BACK ELEVATION



LEFT ELEVATION

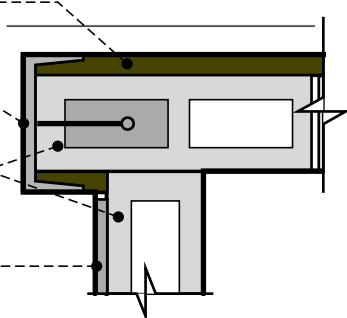
DESIGN OPTION



WALL DETAIL

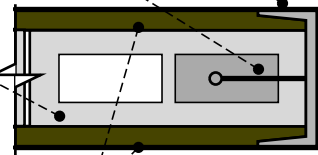
DETAILS

STUCCO SIDING
MTL. CHANNEL
4\"/>



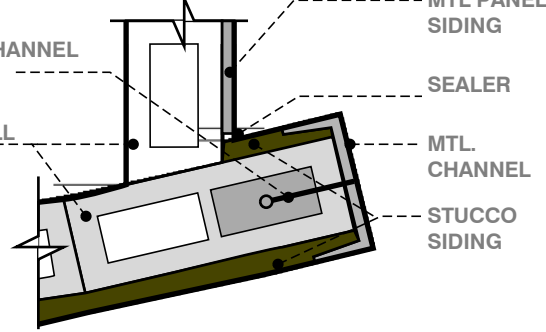
WALL DETAIL 1

MTL. CHANNEL
MTL. ANCHOR CHANNEL
4\"/>

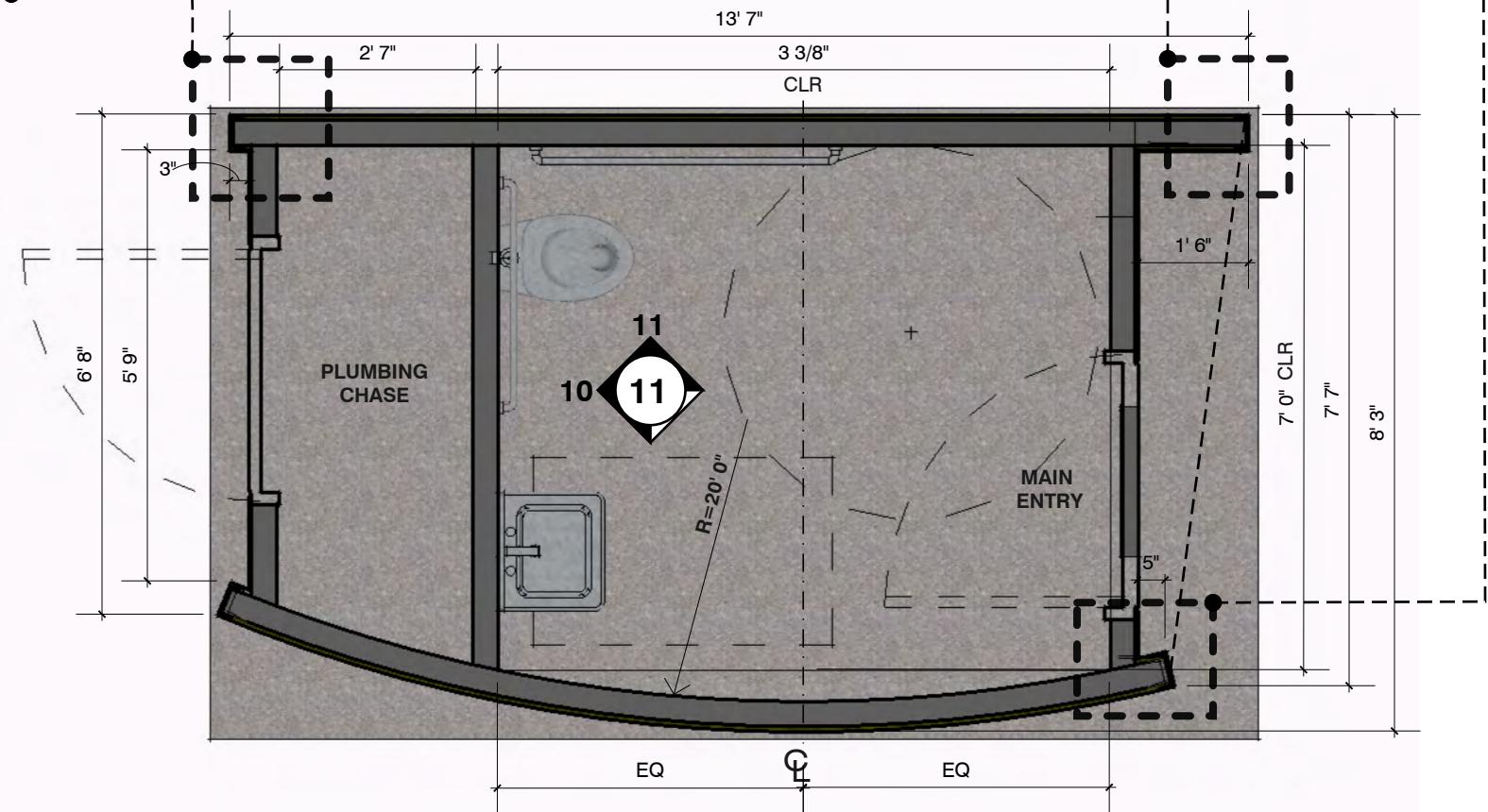


WALL DETAIL 2

MTL. ANCHOR CHANNEL
4\"/>



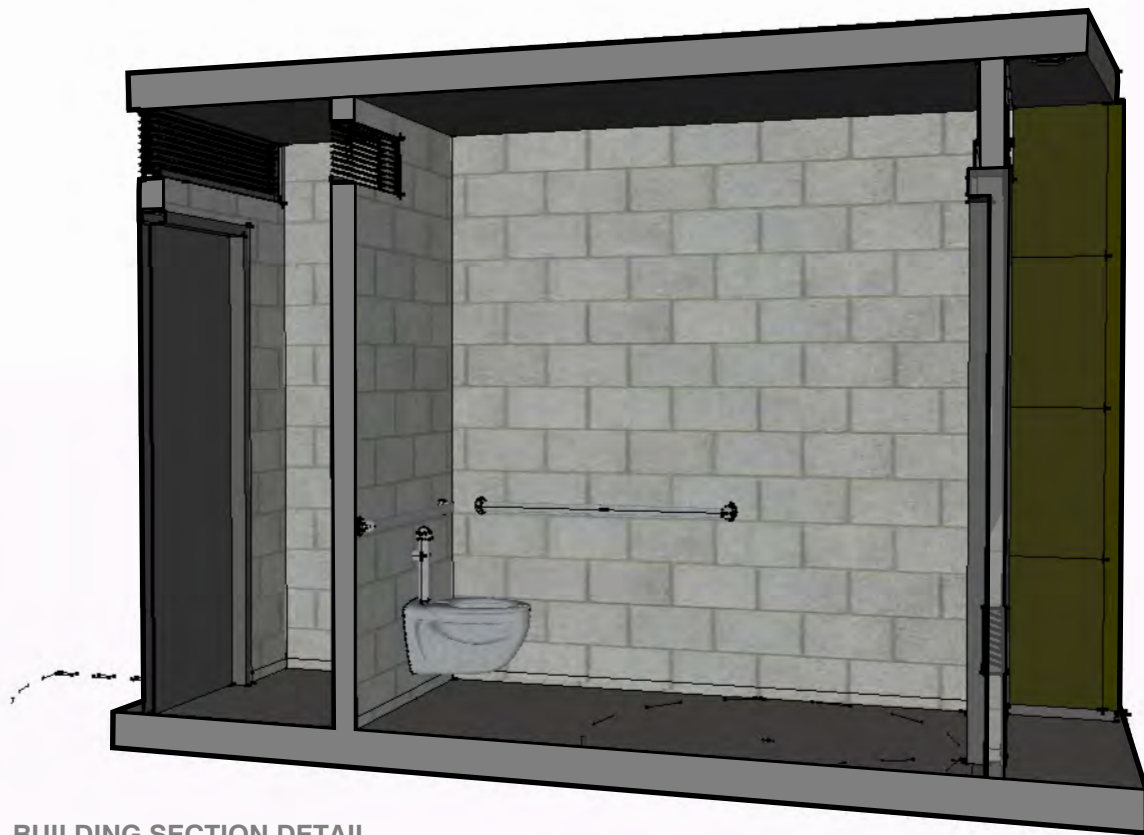
WALL DETAIL 3



FLOOR PLAN - SINGLE OCCUPANCY - BASIC MODULE

DESIGN CRITERIA:
TEMPORARY/ PREFABRICATED FACILITIES

- WALLS: 4" CMU WALLS
- EXTERIOR FINISH: 7/8" CEMENT PLASTER OVER MTL. LAT OVER 4" CMU WALL TYP. SMOOTH FINISH (STEEL TROWEL). PAINTED TO MATCH MTA-MUNI "TRAFFIC SIGNAL GREEN" W/ ANTIGRAFFITI CLEAR COATING TYP.
- INTERIOR FINISH: EXPOSED CMU WALL WITH EPOXY PAINT TYP.
- ROOF: BUILD UP ROOF/ FLUID APPLIED ROOFING (WATER PROOFING ROOFGUARD/SOLATEC TYP.)
- DOORS: EXTERIOR METAL DOOR. PAINTED.
- NATURAL ILLUMINATION: KALWALL SYSTEM WALL
- VENTILATION: METAL LOUVERS (WALLS AND DOORS) & MECHANICAL EXHAUST FAN.
- LIGHTING: INTERIOR-MOTION ACTIVADED LIGHT. EXTERIOR-RECESSED CEILING LIGHT.
- FLOOR: EXPOSED CONCRETE.



BUILDING SECTION DETAIL

