

BUILDING DESIGN & CONSTRUCTION



Sunol Yard Improvements | Civic Design Review Phase 1 | September 17, 2012

Sunol Yard Improvements

I. Temple Road Improvements

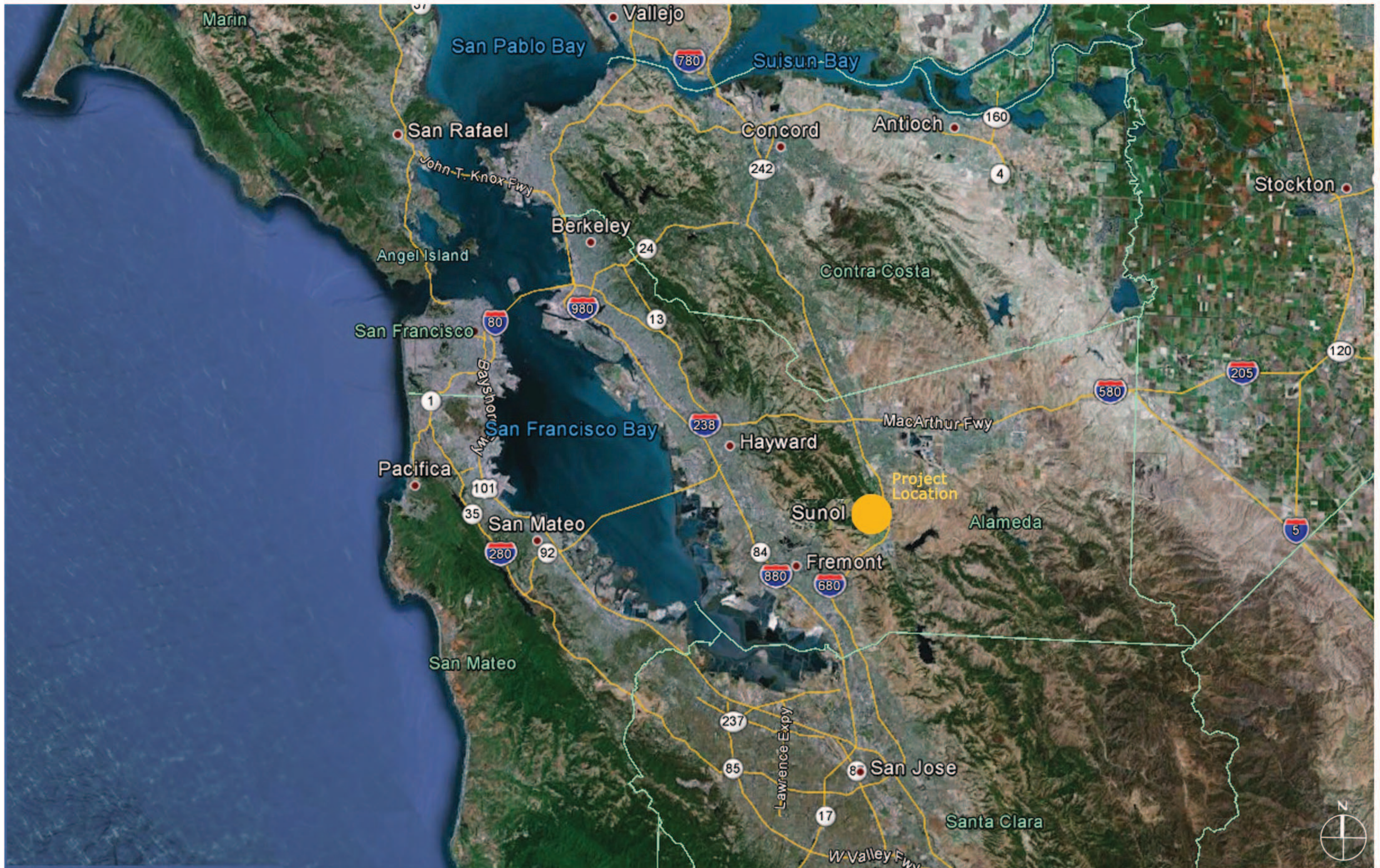
- Rehabilitation of Entrance Gate and surrounding area
- Improved landscaping and planting between Entrance Gate and Water Temple

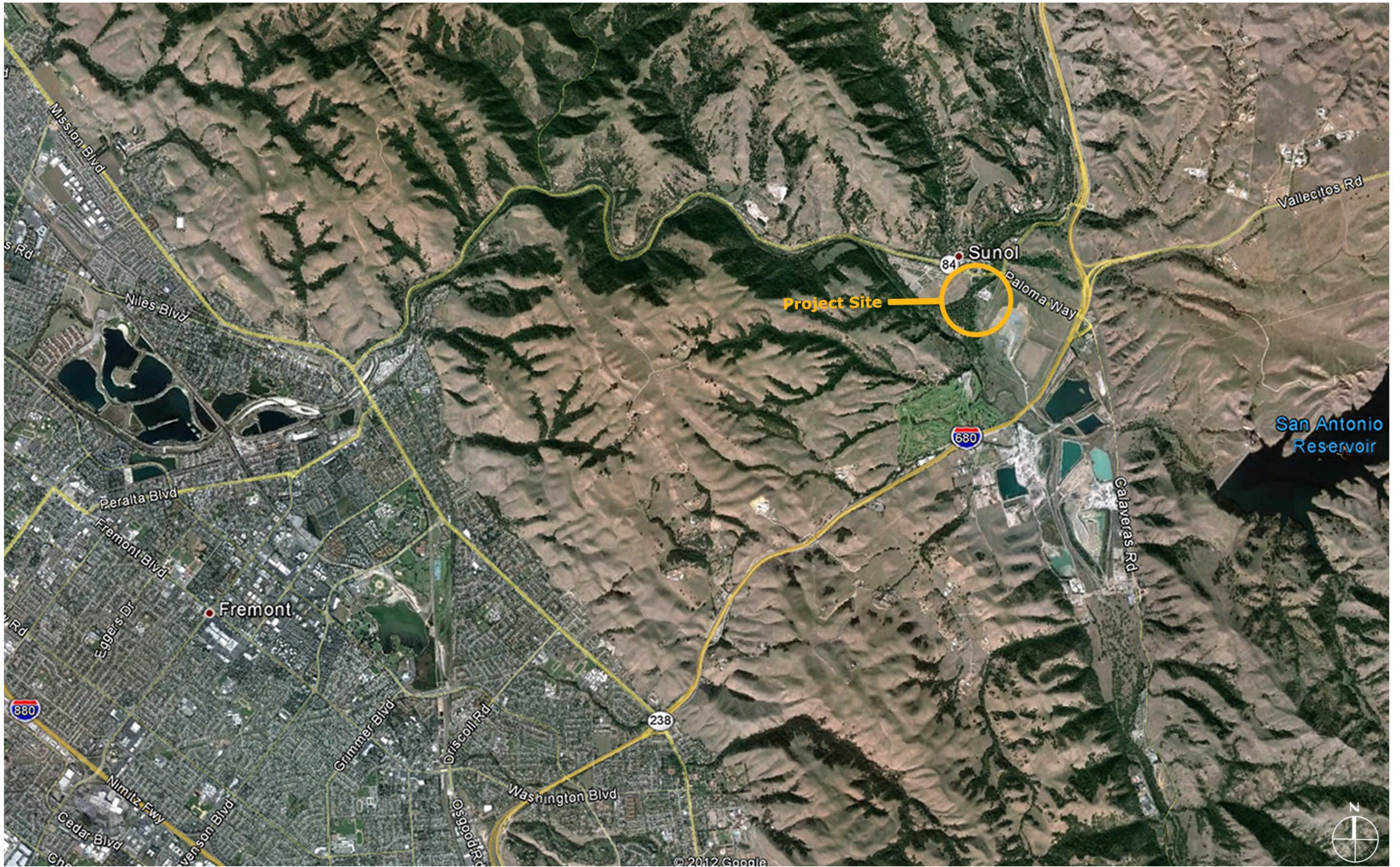
II. New Alameda Creek Watershed Center

- Main Hall Assembly space
- Administrative Pavilion
- Interpretive Pavilion
- Discovery trail
- Public Education on History of Water System & Ecology

III. SFPUC Corporation Yard Improvements

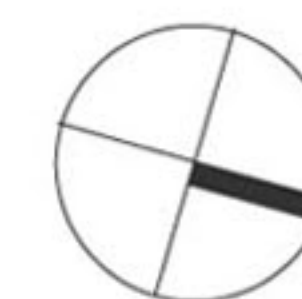
- Site reconfigured to improve operational efficiency
- New structures to replace obsolete facilities
- Improved circulation and aesthetics







0 50 100 200



BUILDING DESIGN & CONSTRUCTION
S.F. DEPARTMENT OF PUBLIC WORKS
LANDSCAPE ARCHITECTURE

Sunol Yard Improvements | Civic Design Review Phase 1 | September 17, 2012

Overall Site Plan
Temple Road, Watershed Center & Sunol Corporation Yard





Main Gate Existing Condition Detail



Main Gate to Temple Road Looking South to Temple



Main Gate to Temple Road Looking West



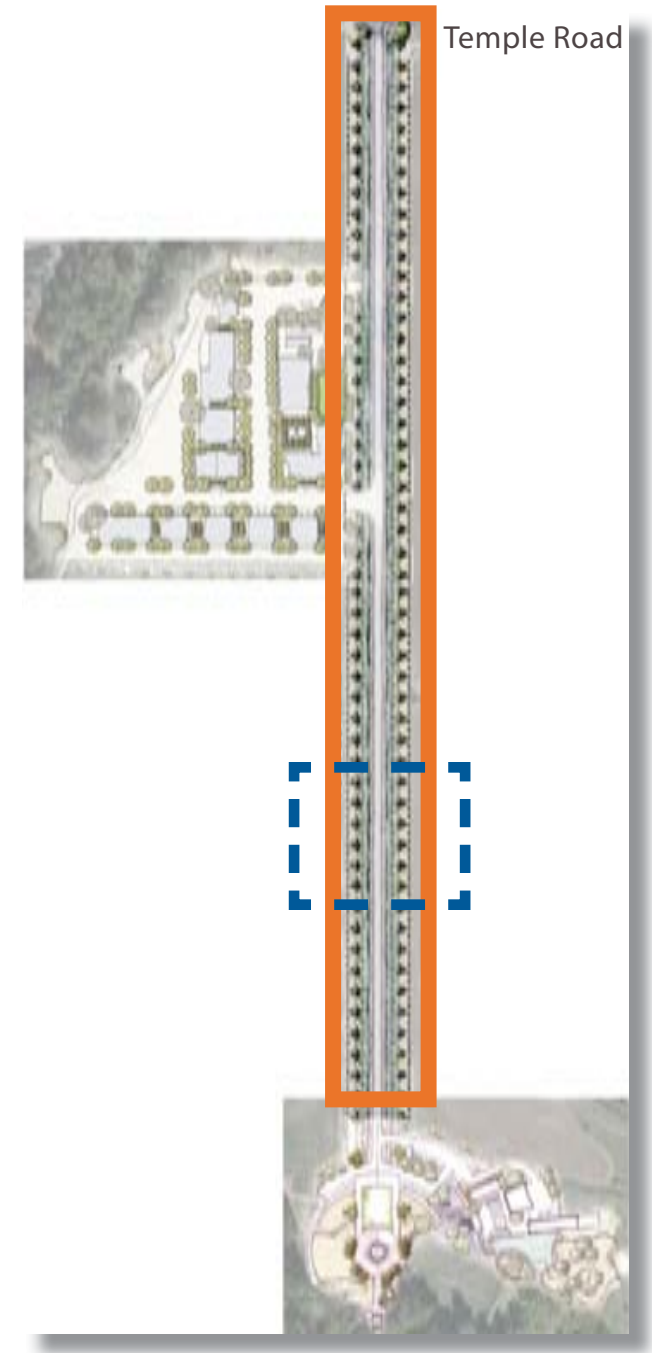
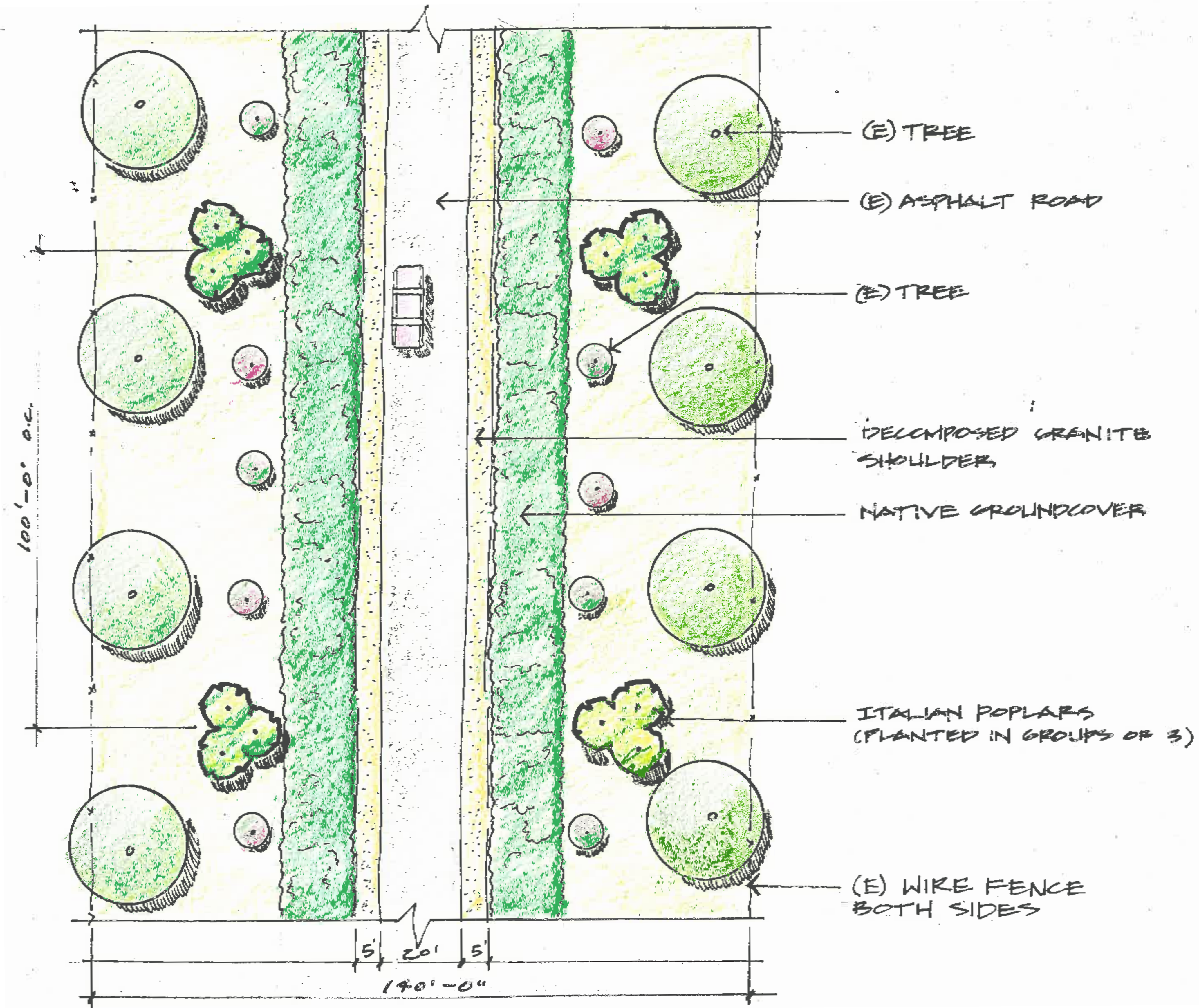
Temple Road Looking South Towards Temple

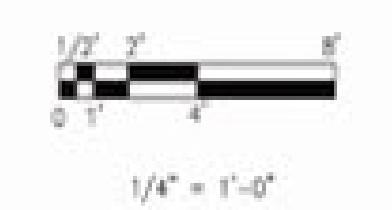
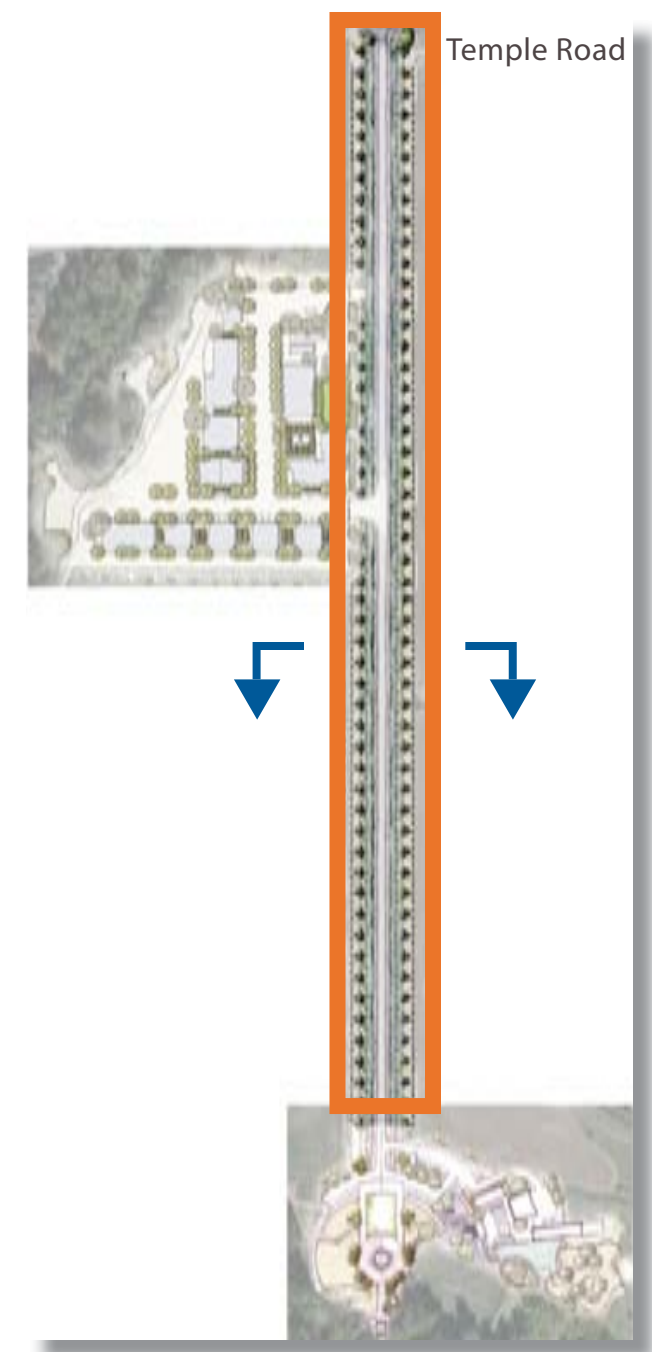


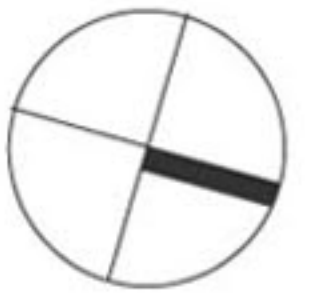
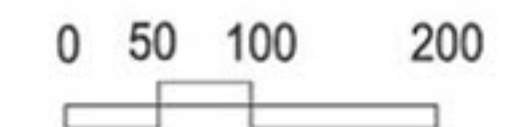
Temple Road Looking North from Temple



Temple Road Typical Roadside Landscape









Inside the Temple



Temple From Road



Proposed Watershed Center Site Looking East



Temple Mural

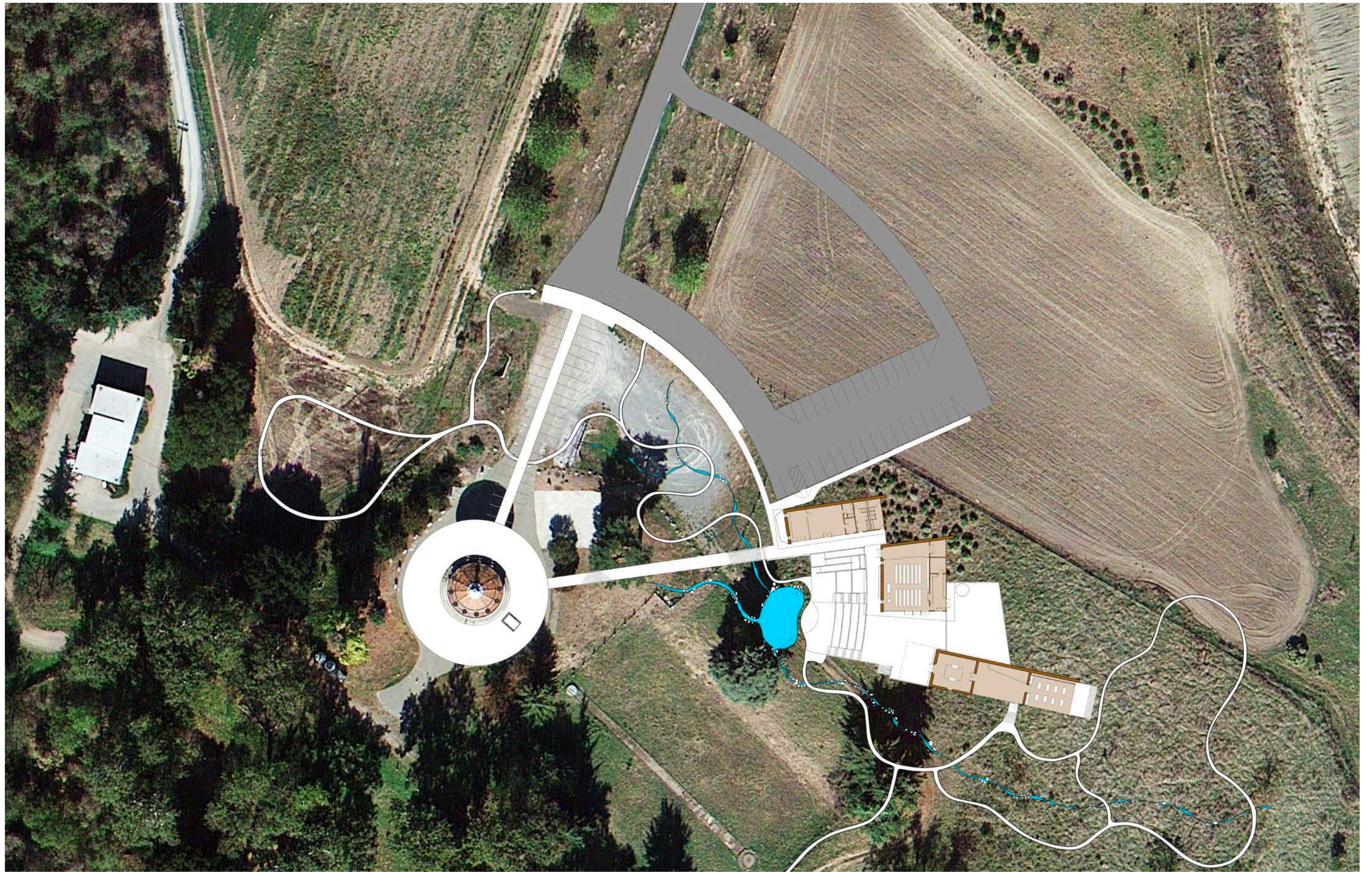


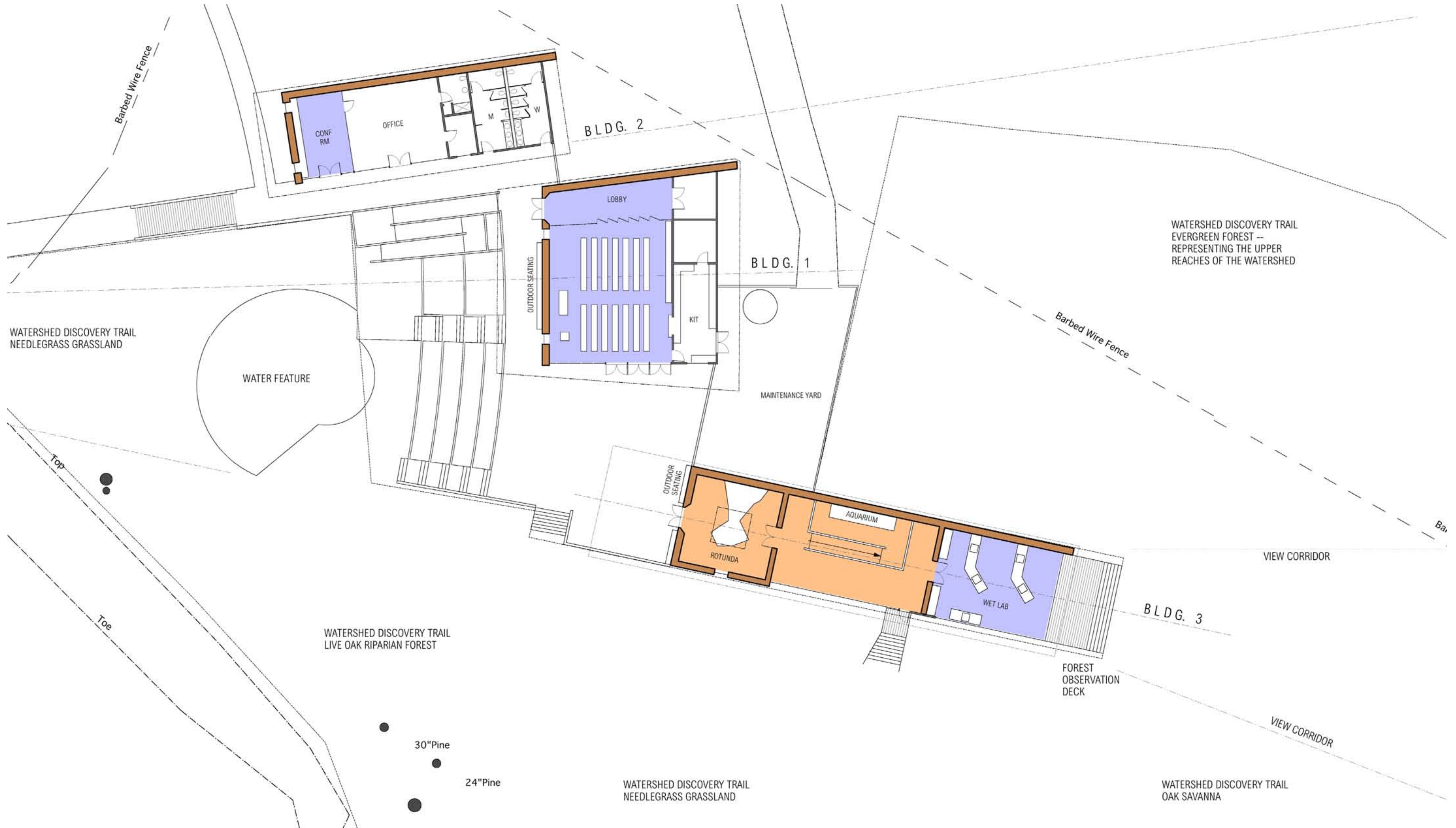
Historic Image of Temple Looking North to Temple Road

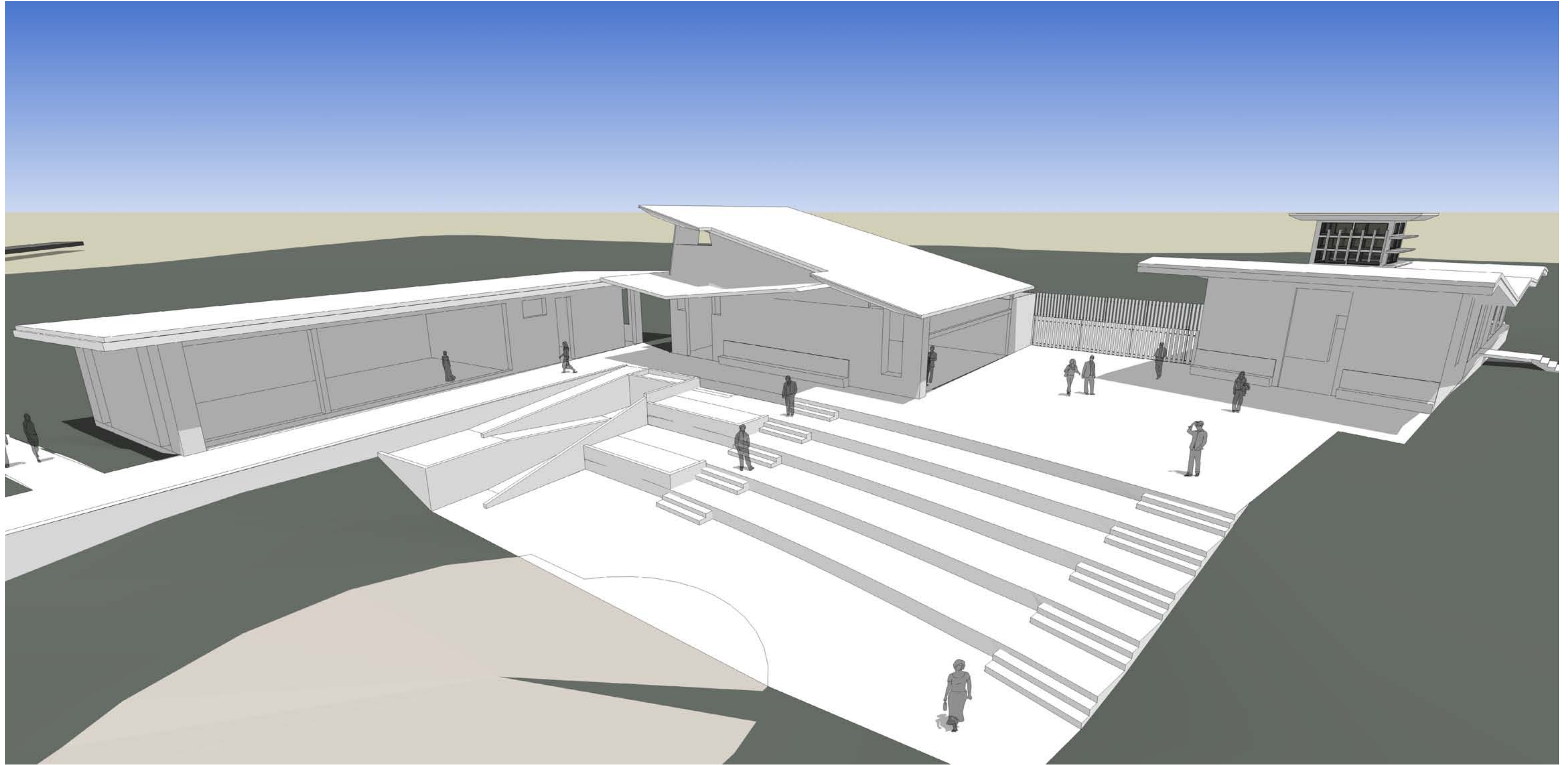


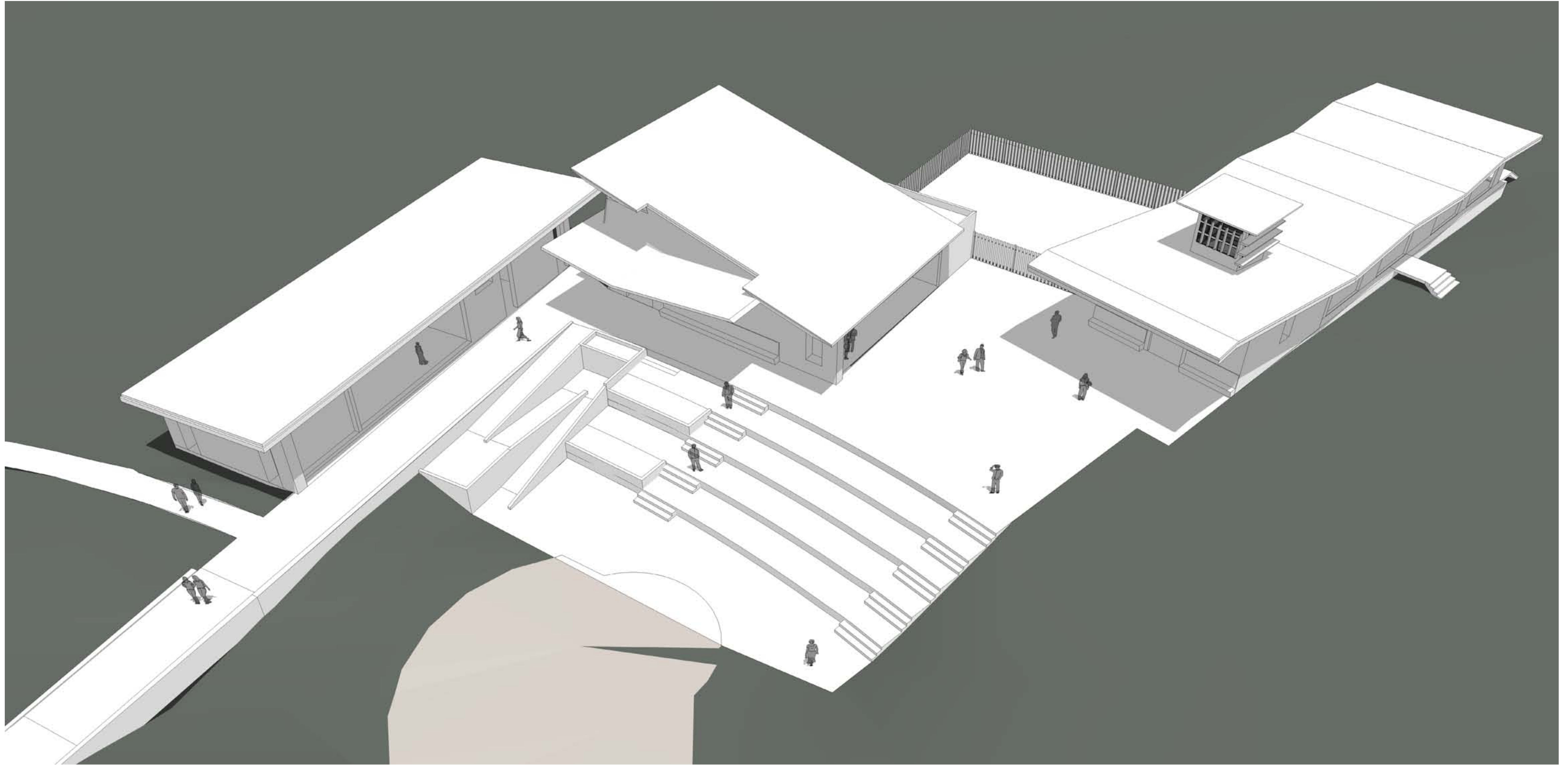
Existing Picnic Area

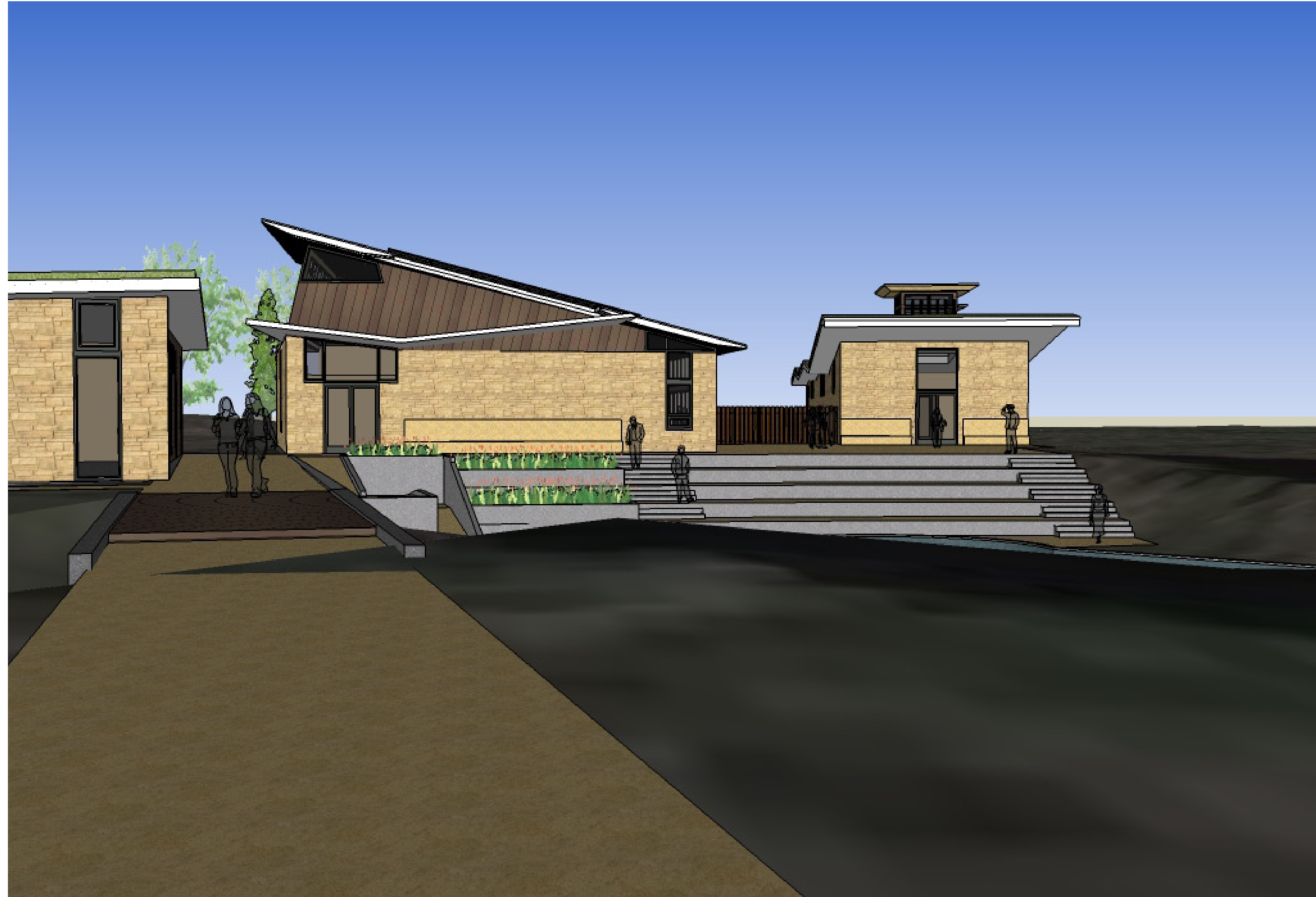


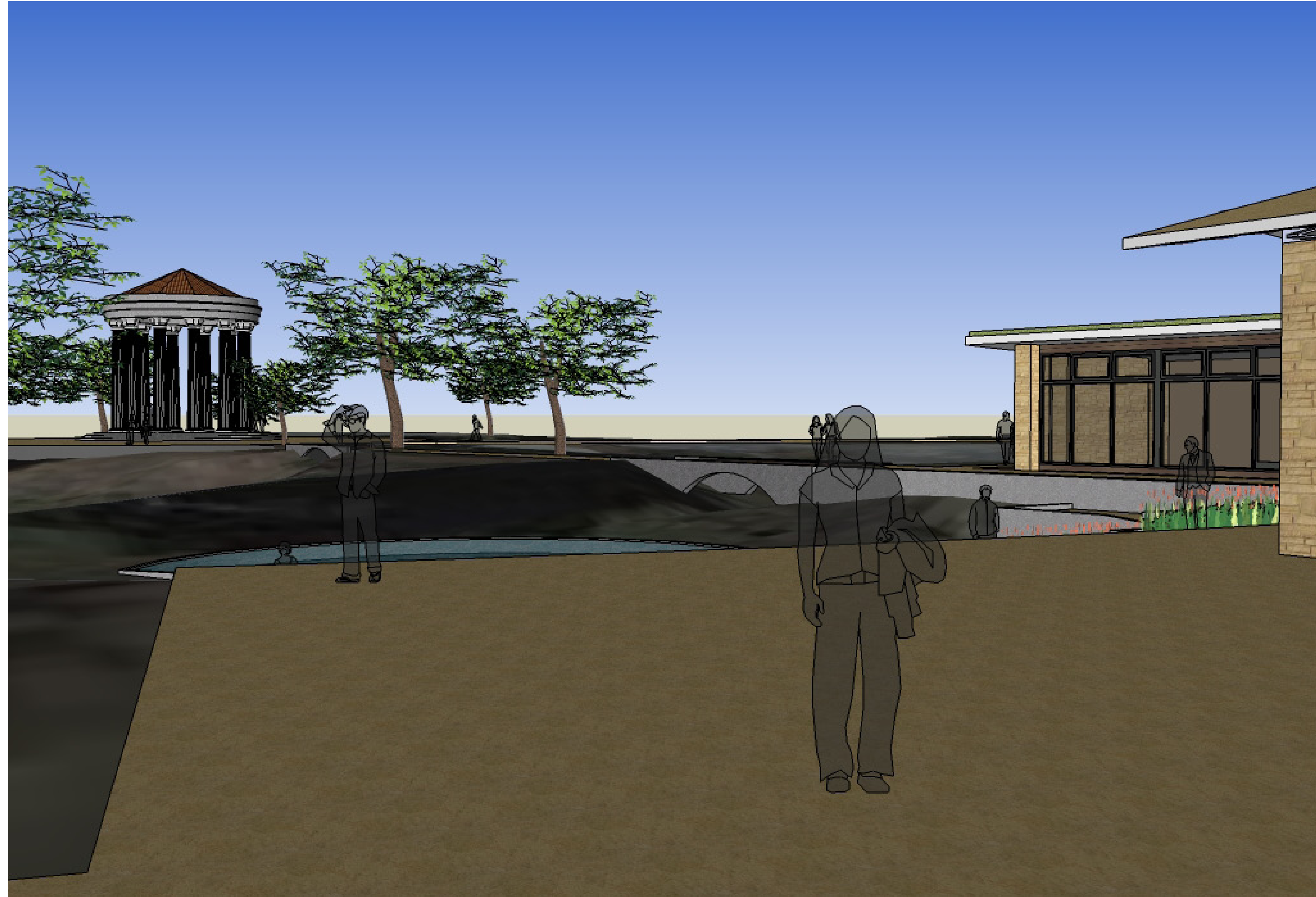


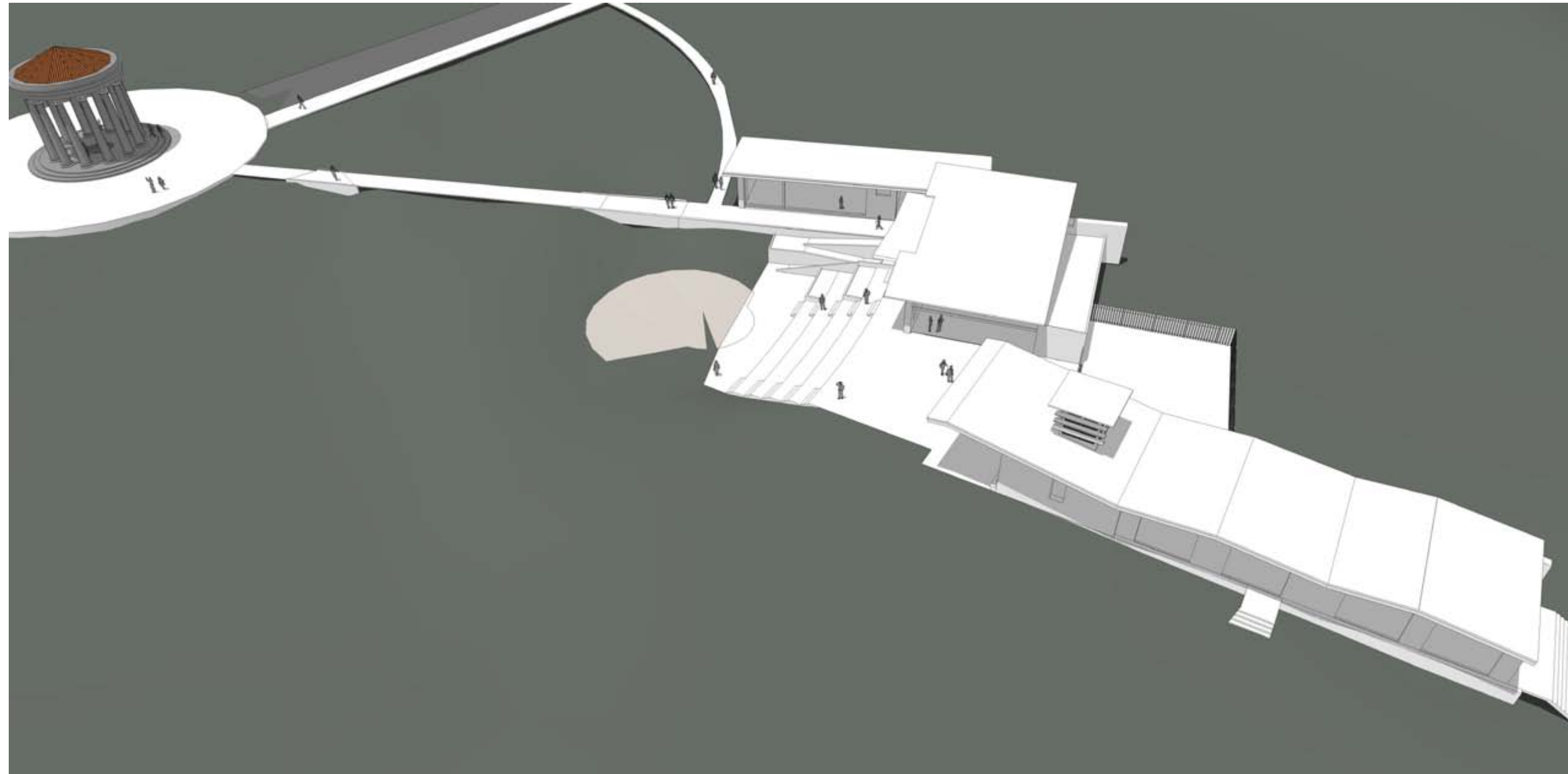


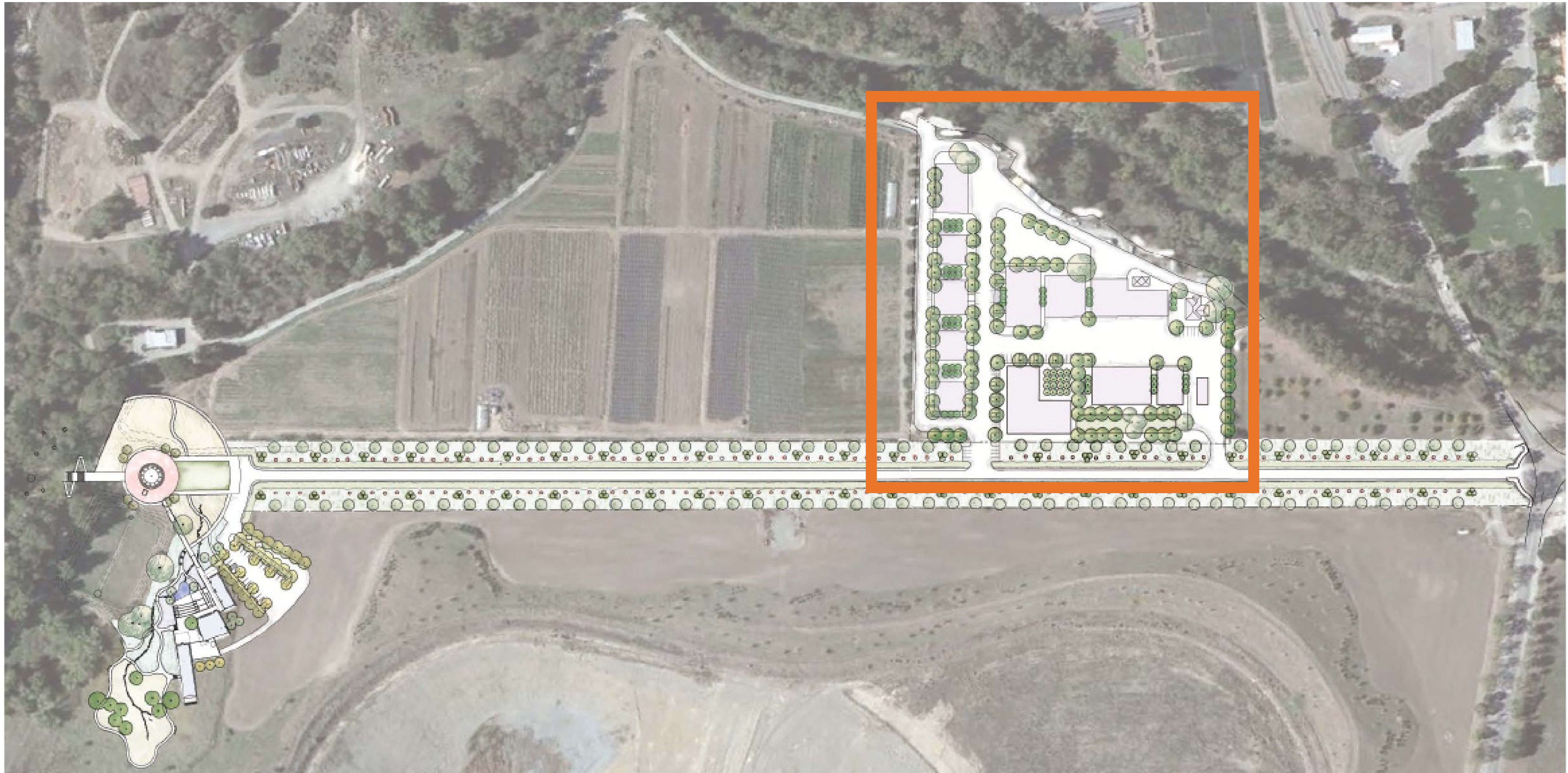














Existing Warehouse



Existing Shop Buildings to Remain



View Towards Sunol Yard Through Existing South Gate



Existing Administration Building



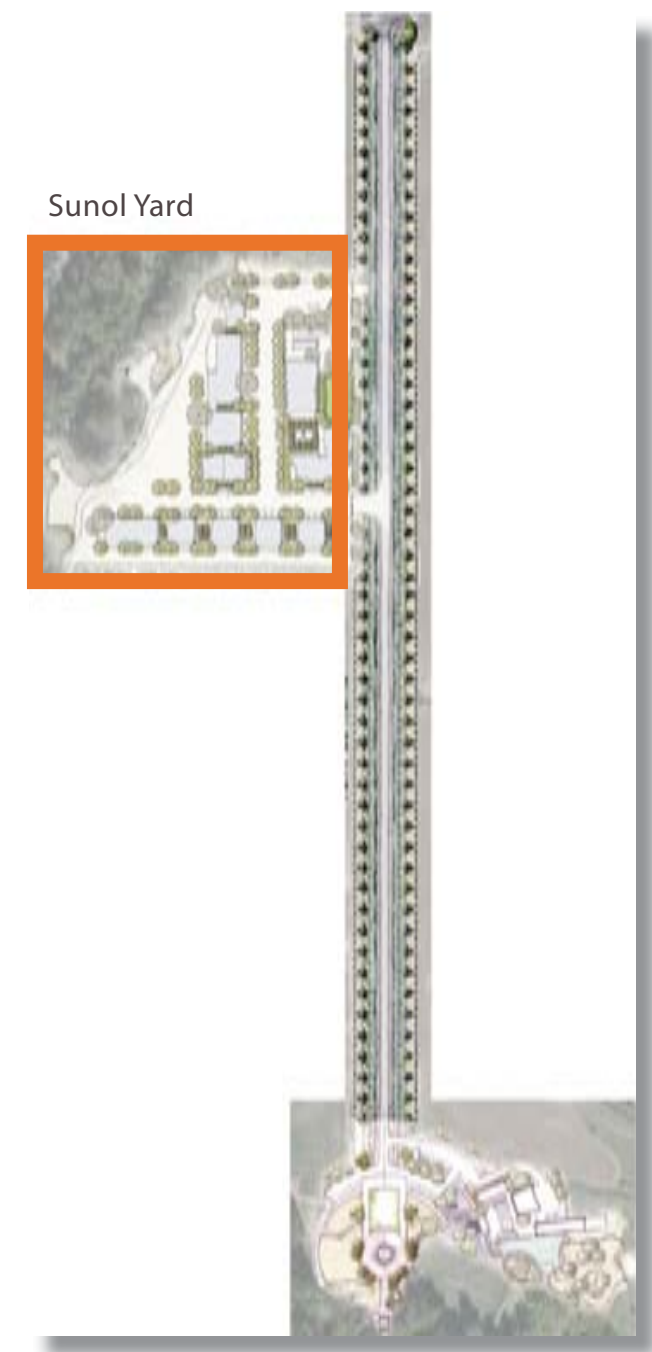
Existing Cottage (Vacant)



Staff Residence to Remain

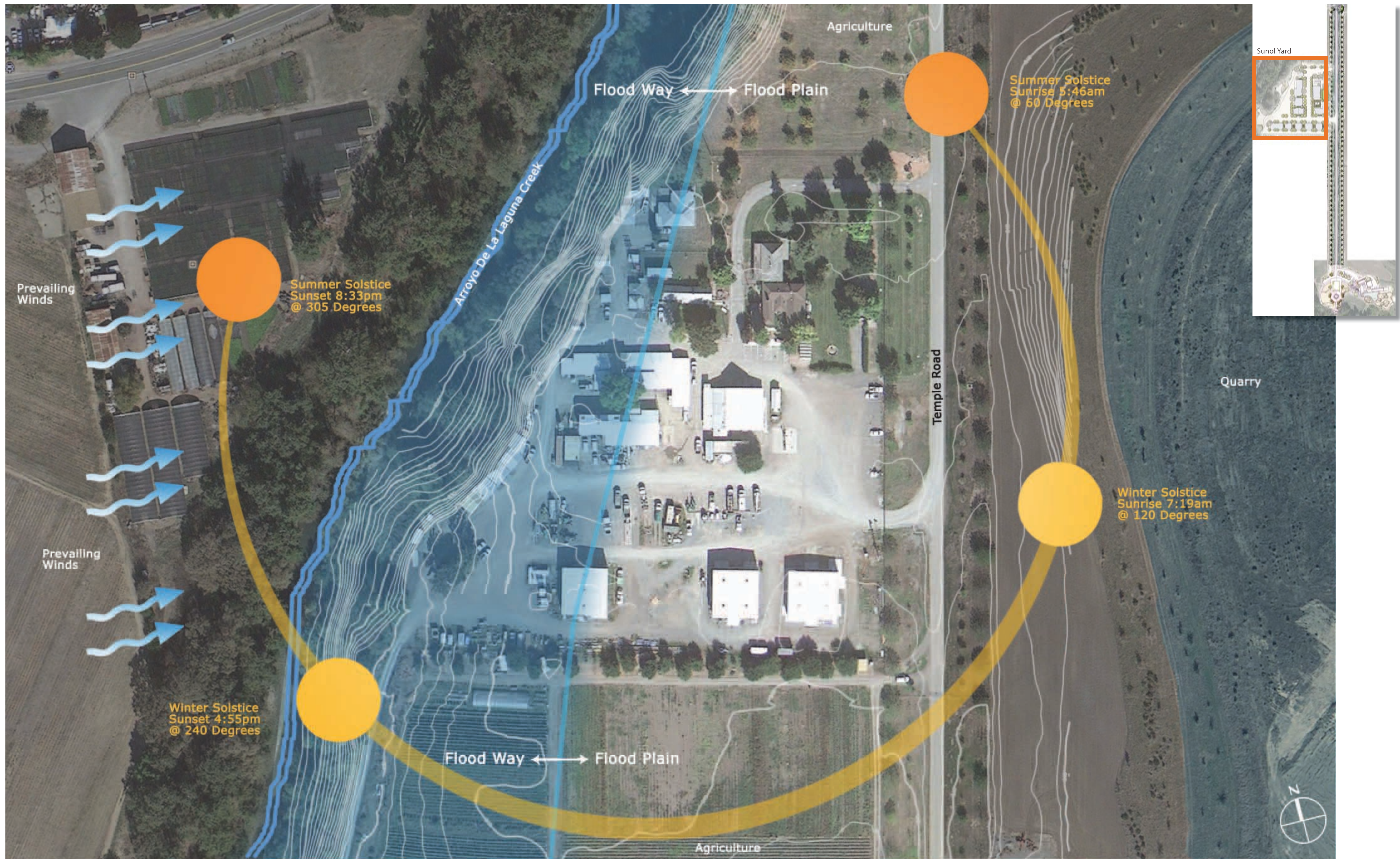


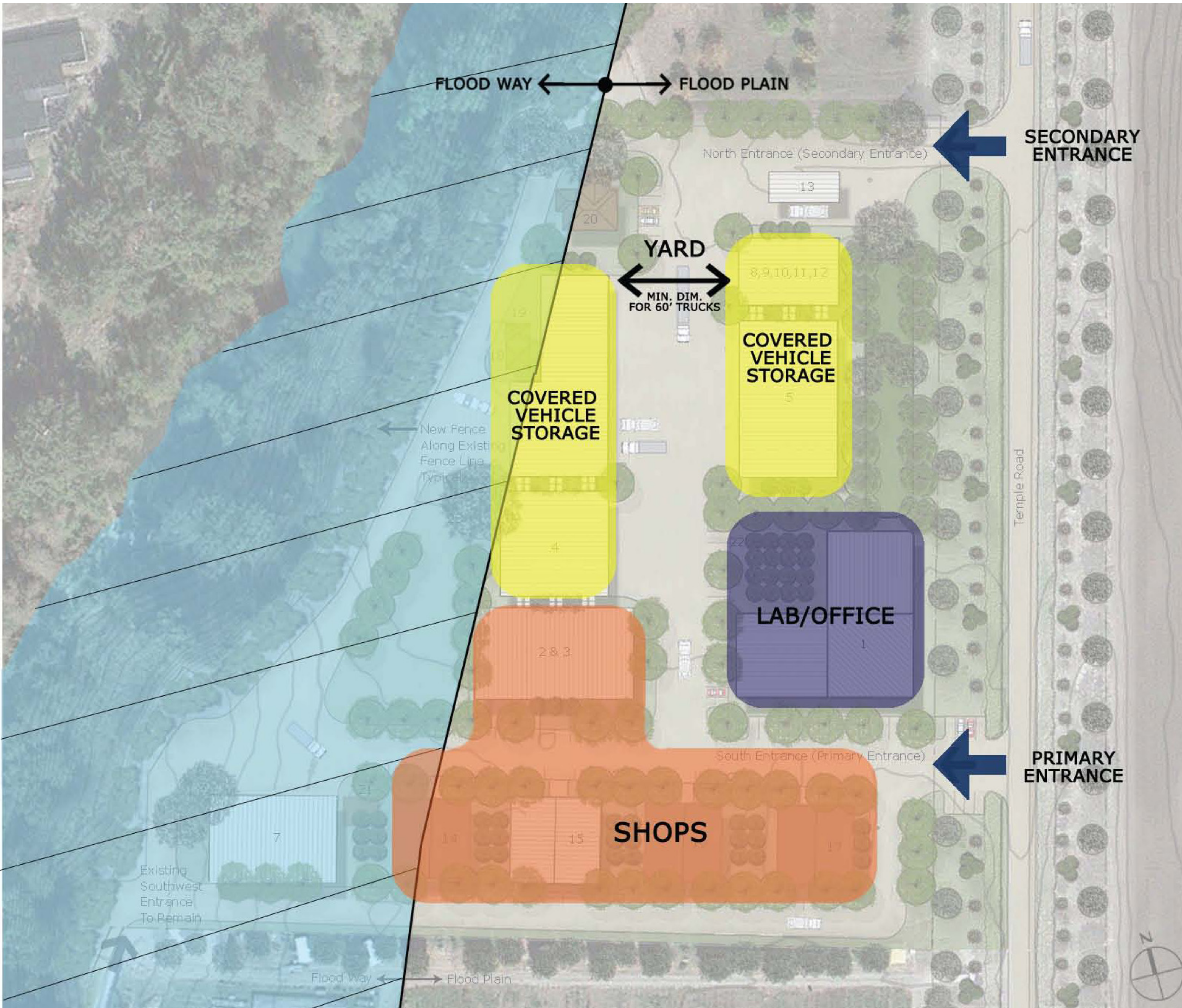
Area within (E) Fenceline
~ 7.6 Acres



SITE FEATURES

1. STAFF RESIDENCE
2. GUEST HOUSE AND GARAGE
3. GARDENER'S OFFICE
4. MODULAR OFFICE STRUCTURE
5. SUNOL COTTAGE (VACANT)
6. LATHE GARDEN STRUCTURE
7. ELECTRICAL BUNGALOW
8. TOOLS STORAGE SHED
9. SUNOL TOWN PUMPS BUNGALOW
10. WATERSHED KEEPERS AND LAND RESOURCES SPECIALIST
11. ADMINISTRATION
12. COVERED VEHICLE STORAGE
13. LOCKED STORAGE
14. VEHICLE EQUIPMENT MAINTENANCE & REPAIR SHOP, CARPENTERS SHOP, AND DAY ROOM
15. GENERAL STORAGE SHED
16. PURCHASE WAREHOUSE AND CORROSION CONTROL SERVICE BUILDING
17. MODULAR BUILDING, OFFICE/DAY ROOM
18. STORAGE AND PAINTERS SHOP
19. OIL STORAGE
20. FUELING ISLAND
21. SHOP #1 (WELDING AND ROLLING)
22. SHOP #3 (AUTO)
23. SHOP #4 (BUILDING & GROUNDS / CARPENTER)



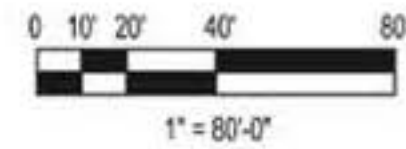


SITE FEATURES

1. ADMINISTRATION BUILDING (9,950 sf)
2. SHOP #6 (EMT AND RADIO) (3,600 SF)
3. SHOP #5 (ELECTRICAL AND PLUMBING) (3,600 SF)
4. COVERED MATERIAL STORAGE (6,700 sf)
5. LARGE EQUIPMENT COVERED STORAGE #2 (9,200 SF)
6. LARGE EQUIPMENT COVERED STORAGE #1 (9,900 SF)
7. LARGE EQUIPMENT COVERED STORAGE #3 (6,500 SF)
8. GENERATOR
9. TRANSFORMER PAD
10. ABOVE GROUND FUEL TANK #3
11. ABOVE GROUND FUEL TANK #2
12. ABOVE GROUND FUEL TANK #1
13. FUEL STATION
14. EXISTING SHOP #1 TO REMAIN (WELDING AND ROLLING) (3,600 SF)
15. SHOP #2 (PAINT AND BLAST) (3,600 SF)
16. EXISTING SHOP #3 TO REMAIN (AUTO) (3,600 SF)
17. EXISTING SHOP #4 TO REMAIN (BUILDING AND GROUNDS/CARPENTER) (3,600 SF)
18. EXISTING PUMP BUILDING TO REMAIN
19. EXISTING ELECTRICAL BUILDING TO REMAIN
20. EXISTING RESIDENCE TO REMAIN
21. EXISTING FUEL TANK, GENERATOR, AND TRANSFORMER TO REMAIN
22. PICNIC AREA
23. WASHRACK AREA

LEGEND

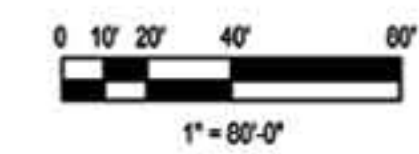
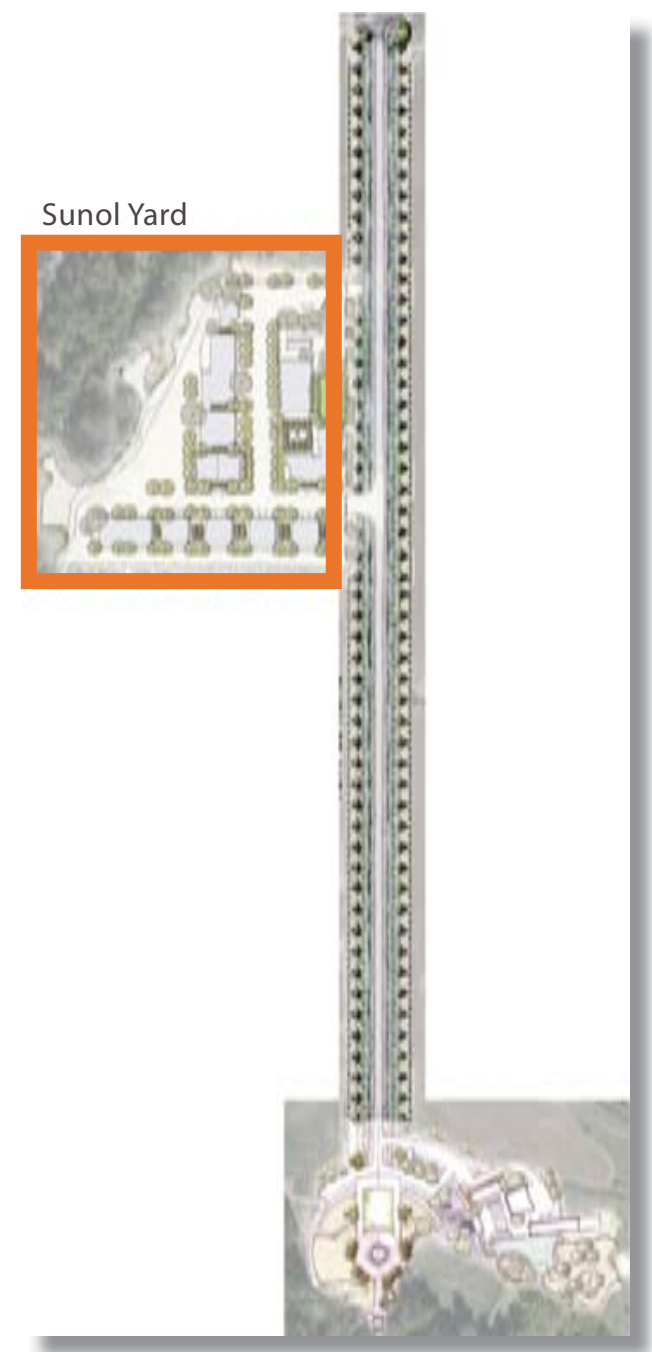
- New
- Existing





LEGEND

- New
- Existing



SITE FEATURES

1. ADMINISTRATION BUILDING (9,950 sf)
2. SHOP #6 (EMT AND RADIO) (3,600 SF)
3. SHOP #5 (ELECTRICAL AND PLUMBING) (3,600 SF)
4. COVERED MATERIAL STORAGE (6,700 sf)
5. LARGE EQUIPMENT COVERED STORAGE #2 (9,200 SF)
6. LARGE EQUIPMENT COVERED STORAGE #1 (9,900 SF)
7. LARGE EQUIPMENT COVERED STORAGE #3 (6,500 SF)
8. GENERATOR
9. TRANSFORMER PAD
10. ABOVE GROUND FUEL TANK #3
11. ABOVE GROUND FUEL TANK #2
12. ABOVE GROUND FUEL TANK #1
13. FUEL STATION
14. EXISTING SHOP #1 TO REMAIN (WELDING AND ROLLING) (3,600 SF)
15. SHOP #2 (PAINT AND BLAST) (3,600 SF)
16. EXISTING SHOP #3 TO REMAIN (AUTO) (3,600 SF)
17. EXISTING SHOP #4 TO REMAIN (BUILDING AND GROUNDS/CARPENTER) (3,600 SF)
18. EXISTING PUMP BUILDING TO REMAIN
19. EXISTING ELECTRICAL BUILDING TO REMAIN
20. EXISTING RESIDENCE TO REMAIN
21. EXISTING FUEL TANK, GENERATOR, AND TRANSFORMER TO REMAIN
22. PICNIC AREA
23. WASHRACK AREA



Existing Sunol Yard Buildings



Chloramine Building



S.F. Zoo Building

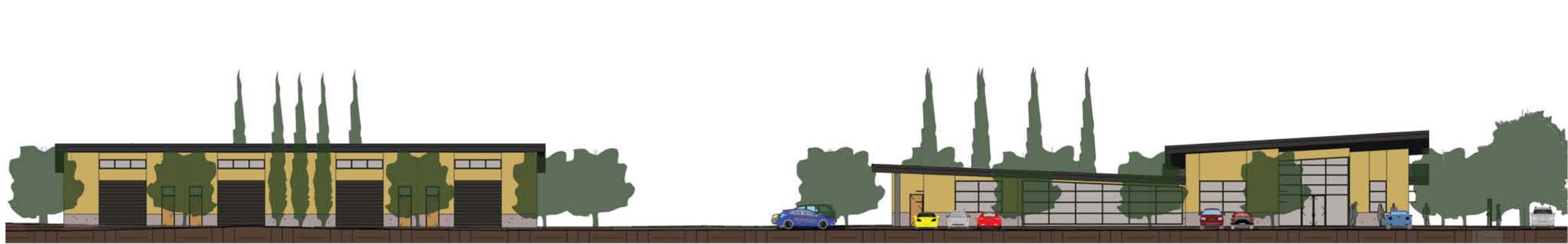


UC Merced Buildings



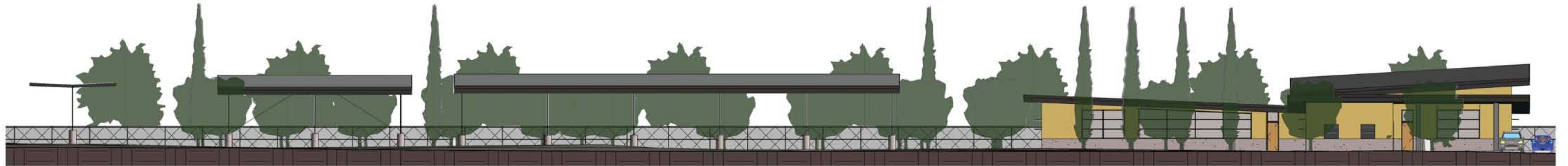
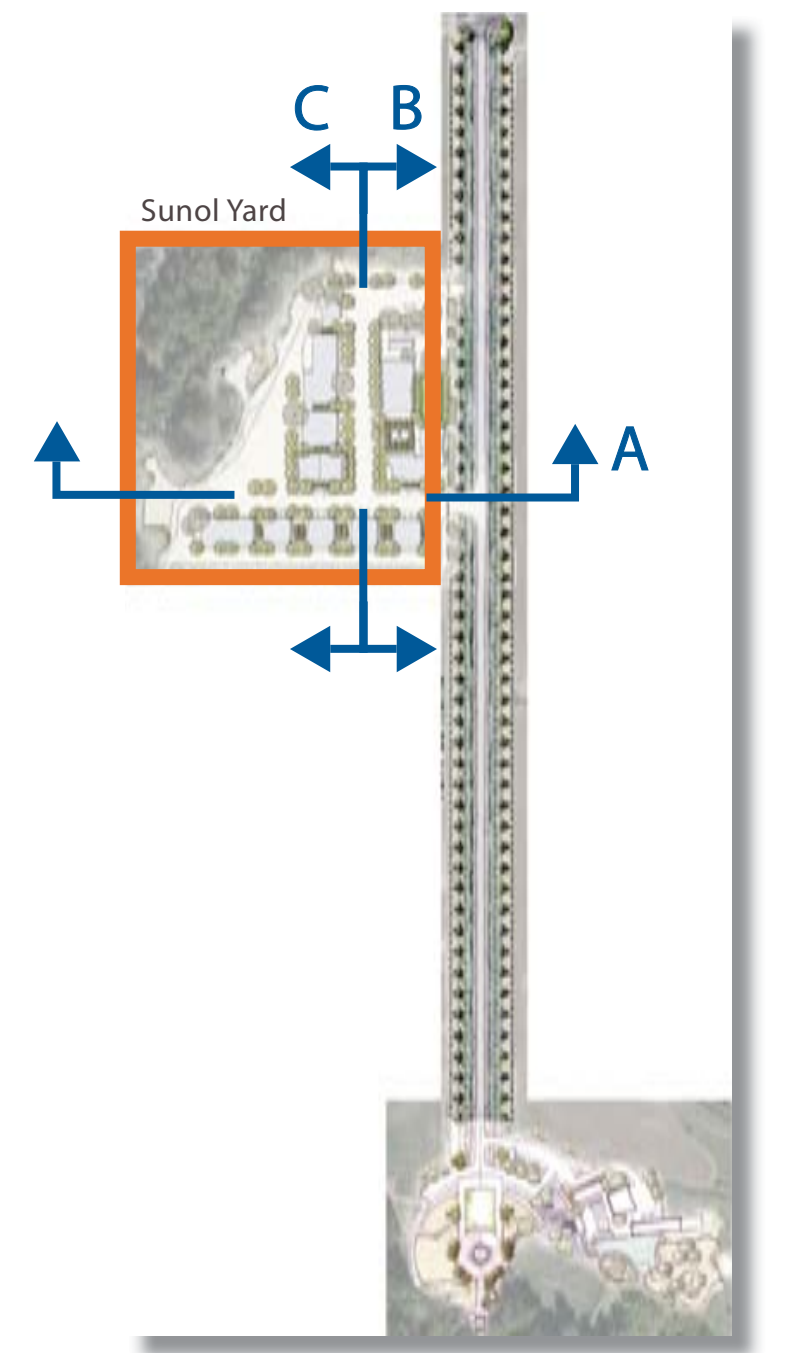
UC Davis Winery





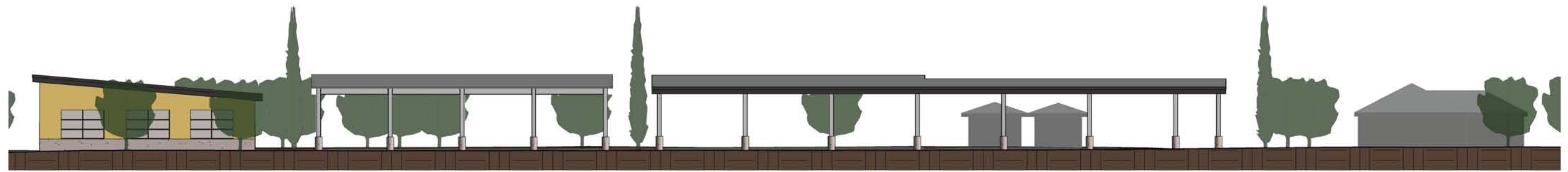
A

Site Section Looking North



B

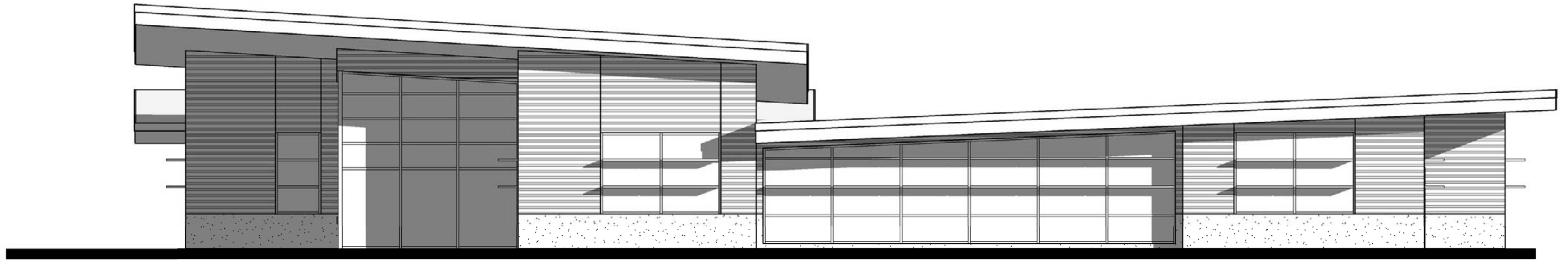
Site Section Looking East



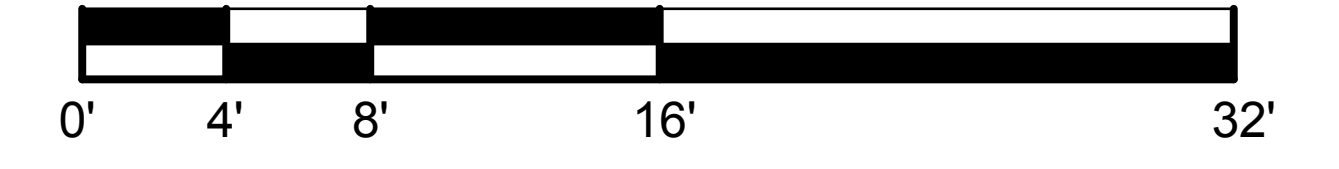
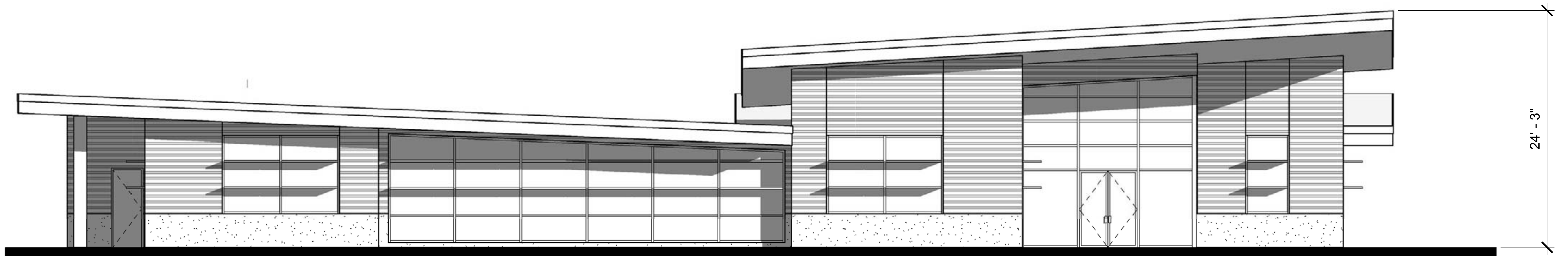
C

Site Section Looking West





East

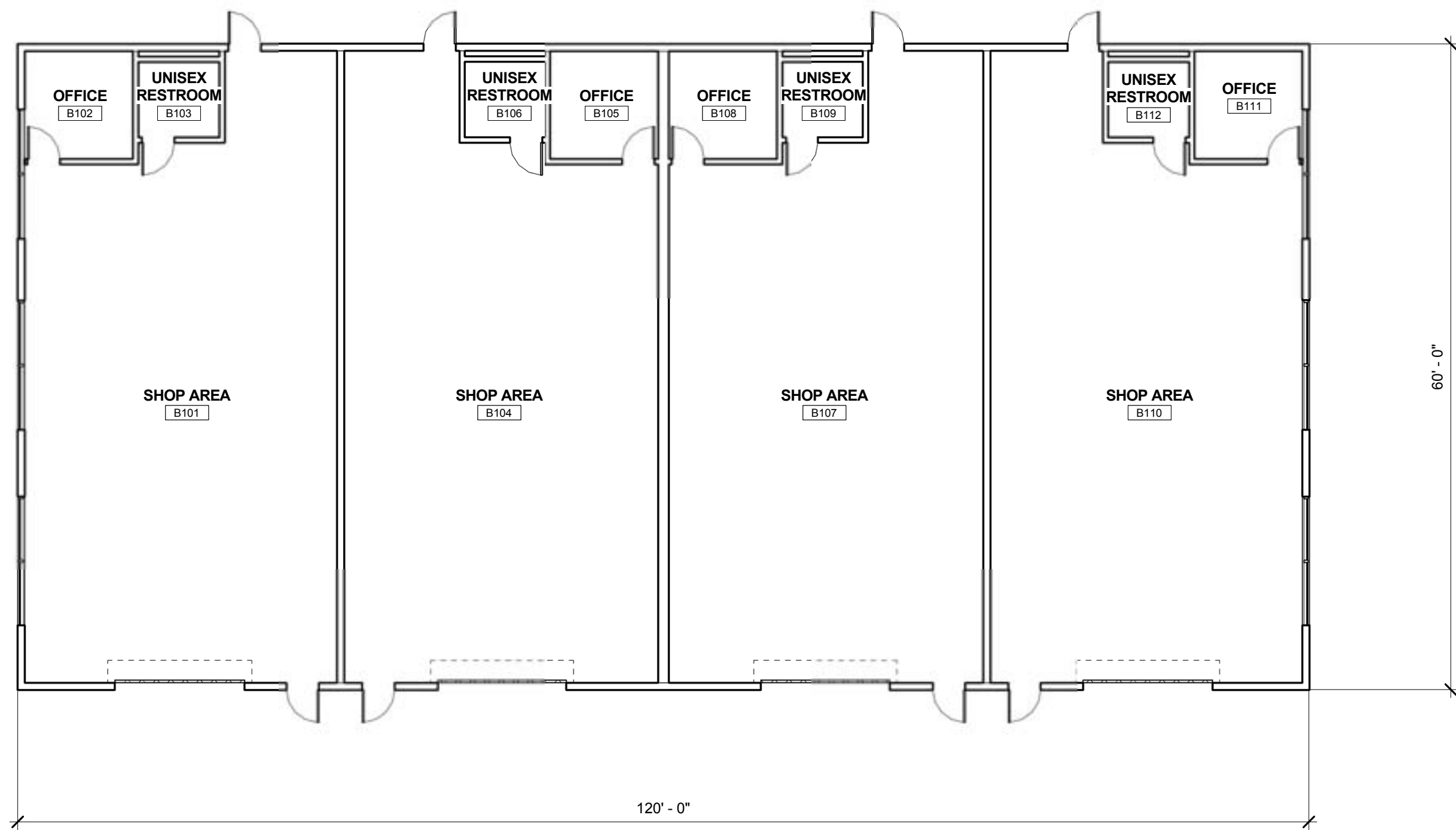


South



Perspective from Temple Road looking Northwest at the Administration Building

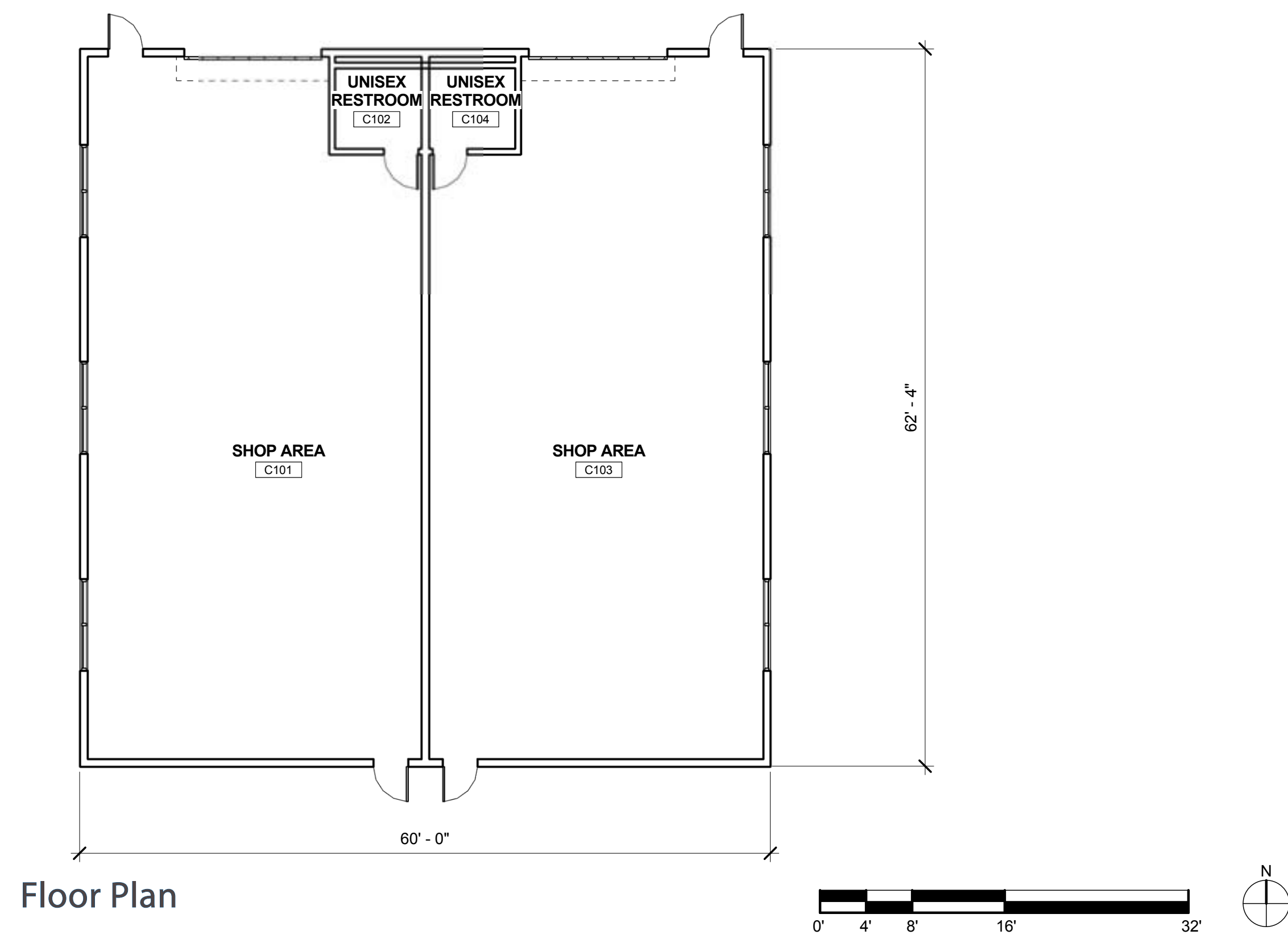




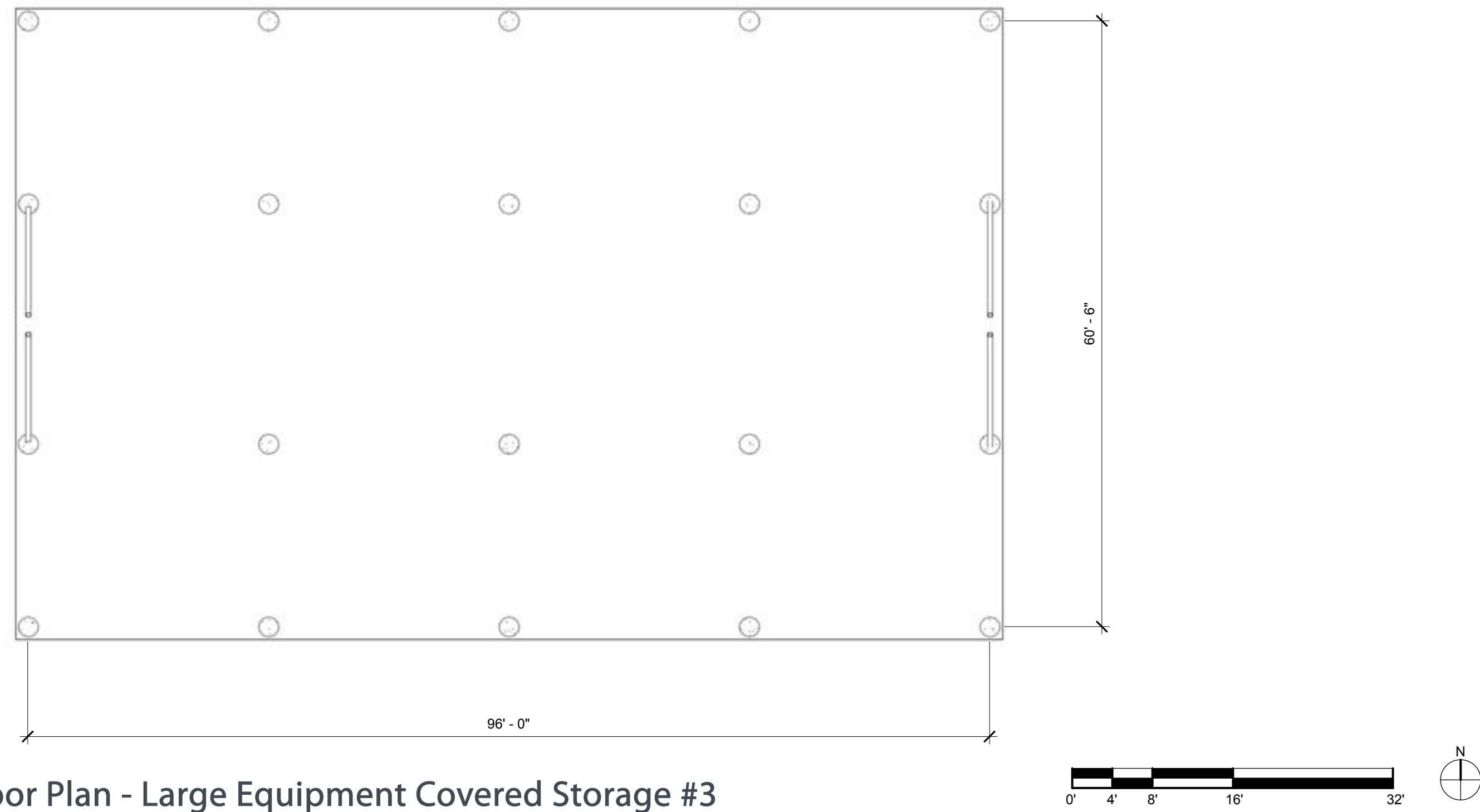
Floor Plan



Perspective from Southeast corner



Perspective from Northeast



Floor Plan - Large Equipment Covered Storage #3



Perspective looking Southeast towards Fueling Station, Fule Tank Area and Large Equipment Covered Storage #2

Sustainability Measures

LEED GOLD is targeted for the New Watershed Center Buildings and Sunol Corporation Yard Administration Building

Additional Conservation Measures Targeted:

- Permeable Paving
- Photovoltaic Panels for Renewable Energy
- Bioswales at Flood Way
- Rainwater Harvesting and Rain Gardens
- Native Plants & Climate Adapted species
- Water Use Reduction
- High Energy Performance
- Construction Materials with High Recycled Content
- Use of Low-Emitting Materials

