

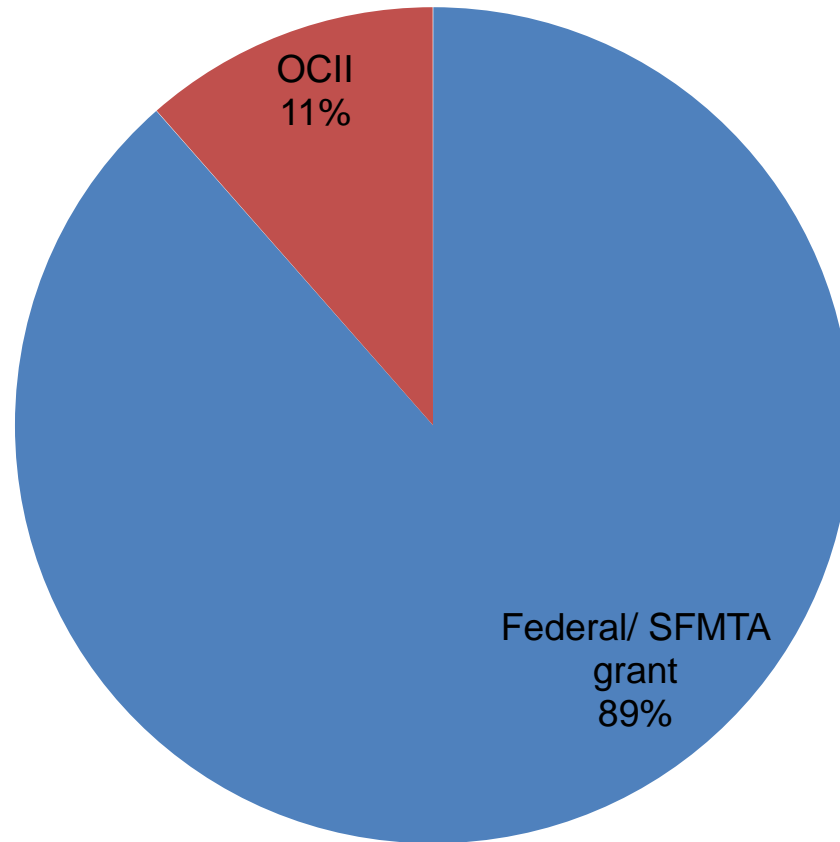
Bayview Opera House and Plaza Construction Update

Project Costs

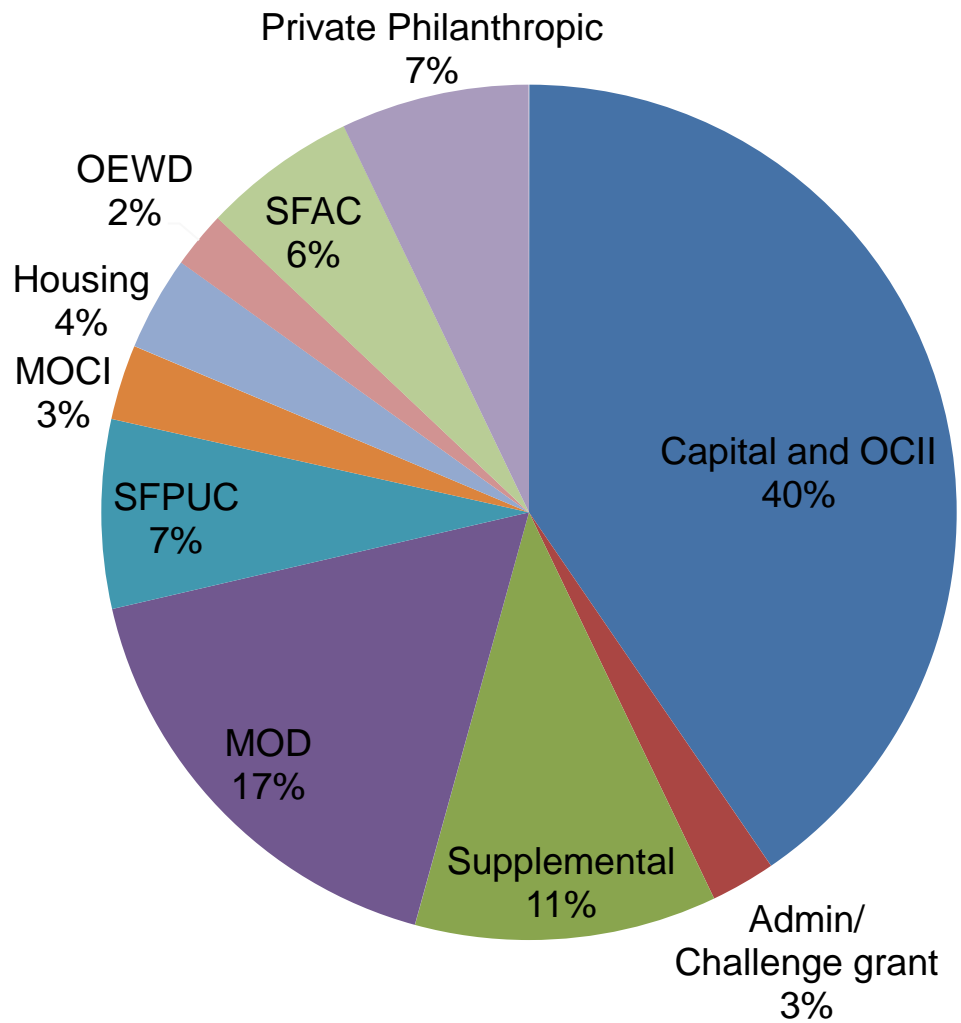


| | |
|----------------|--------------------|
| Phase 1 | \$1,832,354 |
| Phase 2 | \$3,509,897 |
| Total | \$5,342,251 |

Funding Sources: Phase I



Funding Sources: Phase II



Construction Timeline



| Construction Documents | Commence | Duration | Complete |
|--------------------------------------------------------------|-----------------|-----------------|-----------------|
| Locally Funded Project | | | |
| 100% Construction Documents | | | 20-Dec-13 |
| Contract Document Preparation | 23-Dec-13 | 60 | 21-Feb-14 |
| Permitting | 23-Dec-13 | 120 | 22-Apr-14 |
| Contract Bidding & Construction | | | |
| Federal Funded Project (SFMTA) | | | |
| Contract Bidding incl. Award | 7-Jan-14 | | 7-Jan-14 |
| Contractor Bonds/Insurance & Certification | 8-Jan-14 | 33 | 10-Feb-14 |
| Mobilization | 11-Feb-14 | 17 | 28-Feb-14 |
| Close the BVOH Building | 1-Mar-14 | 1 | 2-Mar-14 |
| Groundbreaking Ceremony | | | 8-Mar-14 |
| Construction Civil Plaza Construction | 3-Mar-14 | 105 | 16-Jun-14 |
| Project Close Out | 17-Jun-14 | 45 | 1-Aug-14 |
| Locally Funded Project | | | |
| Contract Bidding DPW | 22-Feb-14 | 90 | 23-May-14 |
| Contract award & Mobilization | 24-May-14 | 30 | 23-Jun-14 |
| Construction Building & Site | 1-Jul-14 | 240 | 26-Feb-15 |
| Project Close Out | 27-Feb-15 | 90 | 28-May-15 |
| Building Re-Opens with Programs & Community Event | | | 5-Mar-15 |



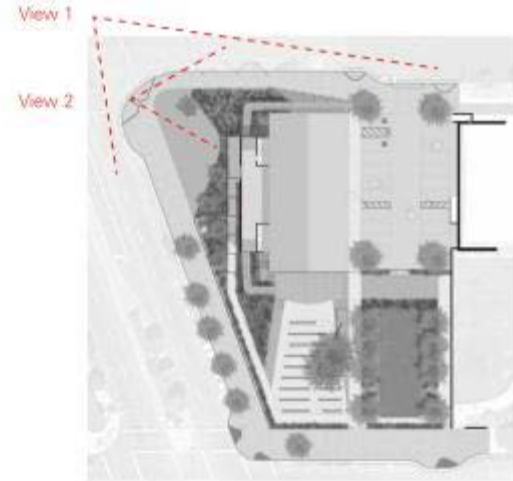


2. MAIN ENTRANCE AND COMMEMORATIVE PLAZA



View 1

The corner of 3rd & Newcomb with the New Commemorative Plaza



Key Features

- Main Entry is more visible from 3rd Street
- New steps, lighting and entry porch makes arrival more welcoming and safer
- New elevated walkway to the west of the porch, makes the balcony and outdoor stage accessible, allowing for consecutive programming
- New Commemorative Plaza on 3rd Street will include a site installation recognizing the history of Bay View



View 2

Elevated Walkway 'Embracing' the Opera House

3. OUTDOOR THEATER AND PROGRAM AREAS



Section

Key Features

- New Outdoor Theater provides more seating, both fixed seats and benches
- New Stage is larger and will support more diverse programs, with its curved shape, wood flooring and footlights
- New lighting will add drama to programs
- Overflow seating can occur along the paths and in the garden areas
- New second stage provides event set-up space, opportunities for multiple programs, and connects parking with the new gardens

4. BAYVIEW GARDENS



Key Areas

- 1 Tall Columnar Trees
- 2 Flowering Plants
- 3 Boulder Field Planting
- 4 Planting For Rain Garden
- 5 Shrubs and Hedges



TALL COLUMNAR TREES:
Armstrong Maple, Acer (Armstrong)



FLOWERING PLANTS IN
POTS:
Pincus Flower, Tibouchina
semeleoides



GROUND COVER:
Star Jasmine,
Tactelopappurus



BOULDER FIELD PLANTING:
Berkeley Sedge, Libania, Alcan Ho, Southern Sweet Fern



PLANTING FOR RAIN GARDEN:
Cape Rue, Chardalopentum sp,
Yellow Twig Dogwood, Cornus
alabamica, Red Flowering Currant, Ribes
sanguineum, Mandevilla, Coprosma sp



SHRUBS AND HEDGES:
Barwood, Brassa sempervirens,
Alkan Bowwood, Myrica
alacina, Wax Leaf Privet, Ligustrum
lucidum, Pittosporum tenuifolium

Ruth Williams Memorial Theatre
BAYVIEW OPERA HOUSE

TOM ELIOT FISCH / KnappArchitects with **HOOD**

