

Julia Laue - Principal Architect/Division Manager  
30 Van Ness Avenue, Suite 4100  
San Francisco, CA 94102-4008  
415/557-4700  
415/557-4701

**SAN FRANCISCO WAR MEMORIAL  
VETERANS BUILDING SEISMIC  
UPGRADE & IMPROVEMENTS**

401 Van Ness Avenue  
San Francisco, CA 94102-4522

**KAI-YEE WOO  
& ASSOCIATES**  
FF&E ASSET MANAGEMENT SERVICES  
601 VAN NESS AVENUE SUITE E3617  
SAN FRANCISCO, CALIFORNIA USA 94102  
T: 415.202.5968  
design@kaiyeewoo.com

REVIEWED AND APPROVED BY  
DATE

Issue 2014-04-08

**FF&E DESIGN DEVELOPMENT**

No.	Date	Revisions
01	2013.12.23	FF&E PROGRESS PRINT
02	2014.01.22	FF&E PROGRESS SIGN-OFF SET
03	2014.01.23	FF&E PROBABLE COST REPORT
04	2014.01.30	FF&E TECHNICAL COORDINATION
05	2014.02.24	FF&E PROBABLE COST REPORT R1
06	2014.04.09	FF&E 100% CD SIGN-OFF

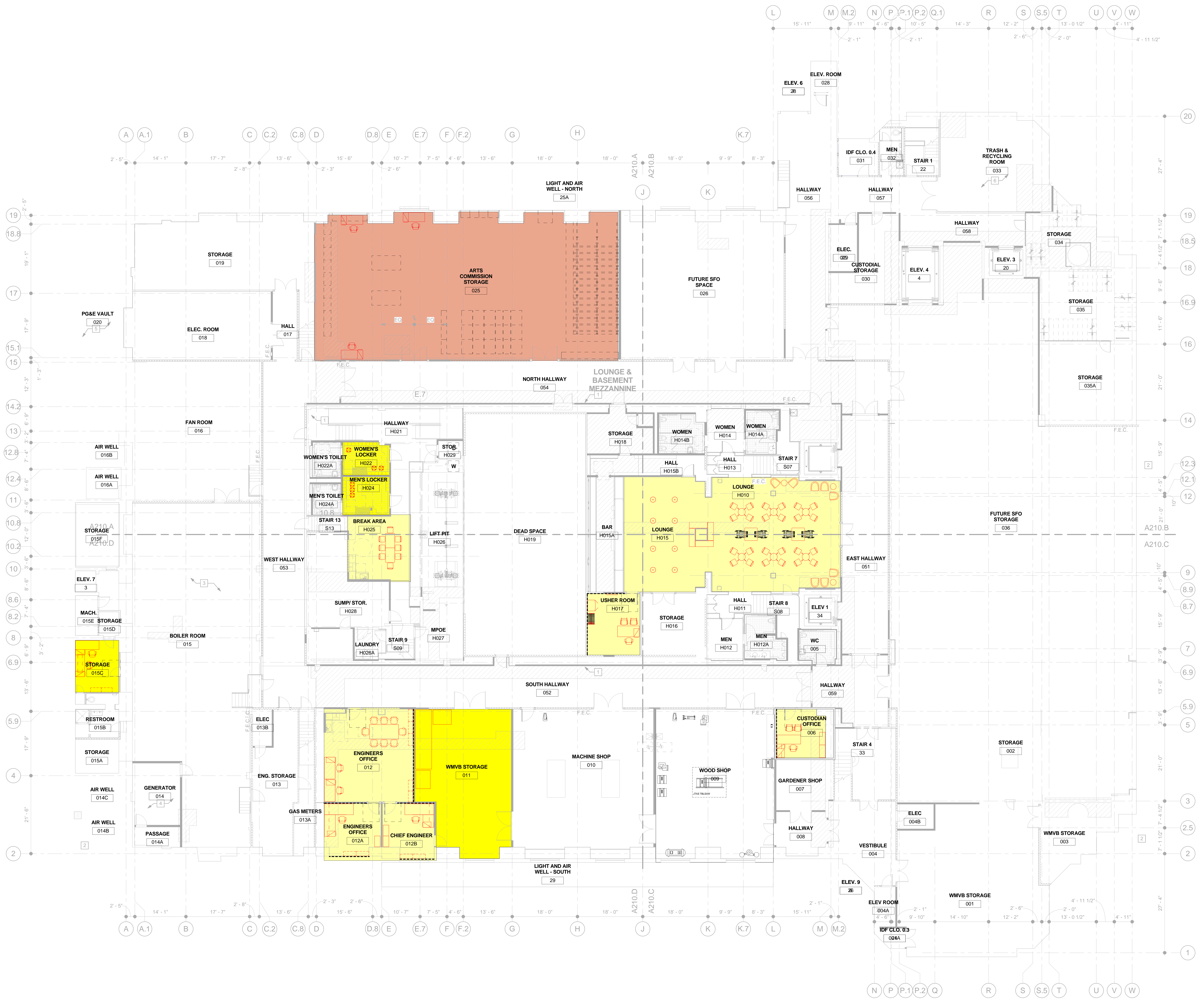
Drawn: AAW  
Proj. Arch:  
Proj. Mgr:  
Section Head:  
Phase:  
Drawing Title:

**BASEMENT OVERALL  
FF&E MANAGEMENT PLAN**

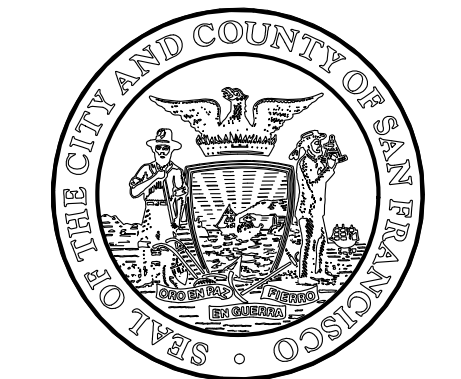
Sheet No. **FFE200**

Scale: 1/8" = 1'-0"  
Job No. **7352A**

4/9/2014 2:36:20 PM X:\KWA Interior Design Project Folder 2\2013 Design Project\WMB\Drawings\FF&E\REVIT MODEL\7352A-KWA-FFE\Recovery.rvt



**NOT FOR  
CONSTRUCTION**



Julia Laue - Principal Architect/Division Manager  
30 Van Ness Avenue Suite 4100  
San Francisco, CA 94102-4700  
94102-6028 Fax (415)957-4701

**SAN FRANCISCO WAR MEMORIAL  
VETERANS BUILDING SEISMIC  
UPGRADE & IMPROVEMENTS**

401 Van Ness Avenue  
San Francisco, CA 94102-4522

**KAI-YEE WOO  
& ASSOCIATES**  
FF&E ASSET MANAGEMENT SERVICES  
601 VAN NESS AVENUE SUITE E3617  
SAN FRANCISCO, CALIFORNIA USA 94102  
T: 415.202.5968  
design@kaiyeewoo.com

REVIEWED AND APPROVED BY  
DATE

Issue 2014-04-08

**FF&E DESIGN DEVELOPMENT**

No.	Date	Revisions
01	2013.12.23	FF&E PROGRESS PRINT
02	2014.01.22	FF&E PROGRESS SIGN-OFF SET
03	2014.01.23	FF&E PROBABLE COST REPORT
04	2014.01.30	FF&E TECHNICAL COORDINATION
05	2014.02.24	FF&E PROBABLE COST REPORT R1
06	2014.04.09	FF&E 100% CD SIGN-OFF

Drawn: AAW  
Proj. Arch:  
Proj. Mgr:  
Section Head:  
Phase:  
Drawing Title:

**FIRST FLOOR OVERALL  
FF&E MANAGEMENT PLAN**

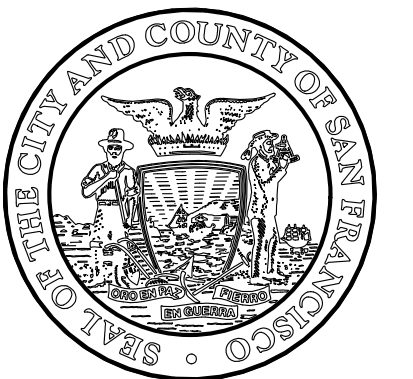
Sheet No. **FFE201**

Scale: 1/8" = 1'-0"  
Job No. **7352A**

X:\KAWA Interior Design Project Folder\2013 Design Project\WMB\Drawings\FF&E REVIT MODEL\7352A-KYWA-FFE\Recovery1.rvt 4/9/2014 2:36:43 PM



**NOT FOR  
CONSTRUCTION**



Julia Laue - Principal Architect/Division Manager  
30 Van Ness Avenue Suite 4100  
San Francisco, CA 94102-4700  
415/557-4700  
94102-6028 Fax 415/557-4701

**SAN FRANCISCO WAR MEMORIAL  
VETERANS BUILDING SEISMIC  
UPGRADE & IMPROVEMENTS**

401 Van Ness Avenue  
San Francisco, CA 94102-4522

**KAI-YEE WOO  
& ASSOCIATES**  
FF&E ASSET MANAGEMENT SERVICES  
601 VAN NESS AVENUE SUITE E3617  
SAN FRANCISCO, CALIFORNIA USA 94102  
T: 415.202.5968  
design@kaiyewoo.com

REVIEWED AND APPROVED BY  
DATE

Issue 2014.04.08

**FF&E DESIGN DEVELOPMENT**

No.	Date	Revisions
01	2013.12.23	FF&E PROGRESS PRINT
02	2014.01.22	FF&E PROGRESS SIGN-OFF SET
03	2014.01.23	FF&E PROBABLE COST REPORT
04	2014.01.30	FF&E TECHNICAL COORDINATION
05	2014.02.24	FF&E PROBABLE COST REPORT R1
06	2014.04.09	FF&E 100% CD SIGN-OFF

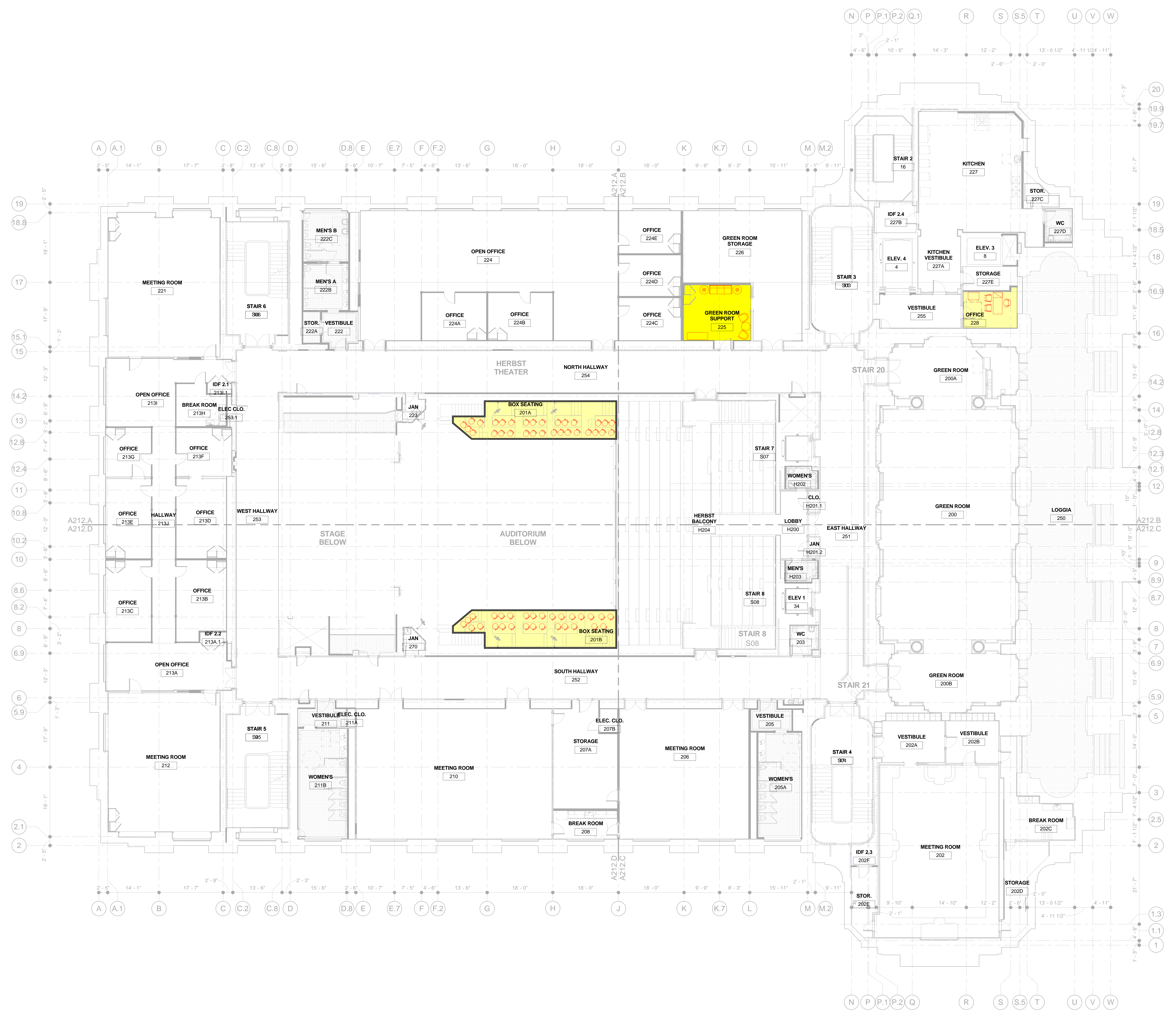
Drawn: AAW  
 Prop. Arch:  
 Proj. Mgr:  
 Section Head:  
 Phase:  
 Drawing Title:

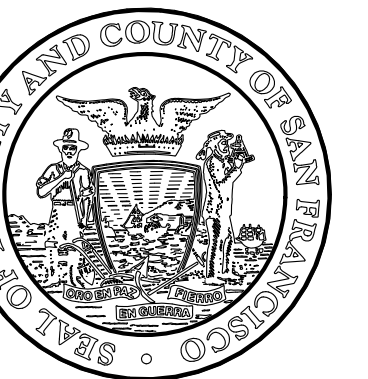
**SECOND FLOOR OVERALL  
FF&E MANAGEMENT PLAN**

Sheet No. **FFE202**

Scale: 1/8" = 1'-0"  
Job No. **7352A**

X:\KWWA Interior Design Project Folder 2013 Design Project\WMB\Drawings\FF&E REVIT MODEL\7352A-KWWA-FFE\Recovery\prt  
4/9/2014 2:37:22 PM





Julia Laue - Principal Architect/Division Manager  
30 Van Ness Avenue Suite 4100  
San Francisco, CA 94102-4700 (415)557-4700  
94102-6028 Fax (415)557-4701

**SAN FRANCISCO WAR MEMORIAL  
VETERANS BUILDING SEISMIC  
UPGRADE & IMPROVEMENTS**

401 Van Ness Avenue  
San Francisco, CA 94102-4522

**KAI-YEE WOO  
& ASSOCIATES**  
FF&E ASSET MANAGEMENT SERVICES  
601 VAN NESS AVENUE SUITE E3617  
SAN FRANCISCO, CALIFORNIA USA 94102  
T: 415.202.5968  
design@kaiyewoo.com

REVIEWED AND APPROVED BY  
DATE

Issue 2014-04-08

**FF&E DESIGN DEVELOPMENT**

No.	Date	Revisions
01	2013.12.23	FF&E PROGRESS PRINT
02	2014.01.22	FF&E PROGRESS SIGN-OFF SET
03	2014.01.23	FF&E PROBABLE COST REPORT
04	2014.01.30	FF&E TECHNICAL COORDINATION
05	2014.02.24	FF&E PROBABLE COST REPORT R1
06	2014.04.09	FF&E 100% CD SIGN-OFF

Drawn: AAW  
Proj. Arch:  
Proj. Mgr:  
Section Head:  
Phase:  
Drawing Title:

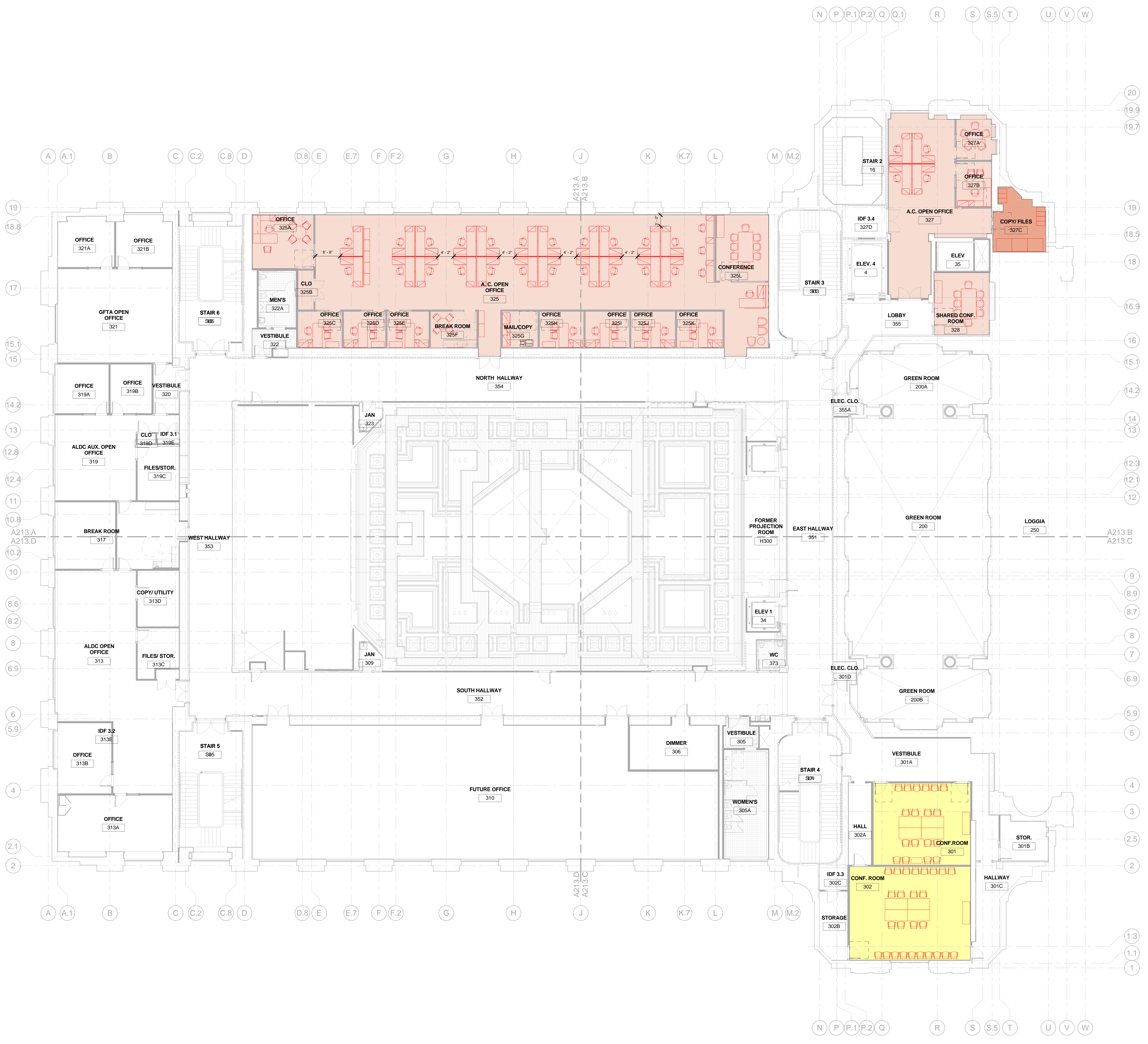
**THIRD FLOOR OVERALL  
FF&E MANAGEMENT PLAN**

Sheet No. **FFE203**

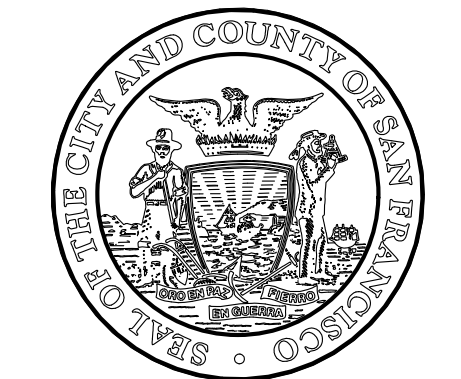
Scale: 1/8" = 1'-0"  
Job No. **7352A**

X:\KWA Interior Design Project\Folders\_2013\Design Project\WMB\Drawings\FF&E REVIT MODEL\7352A-KWA-FFE\Recovery.rvt

4/9/2014 2:37:46 PM



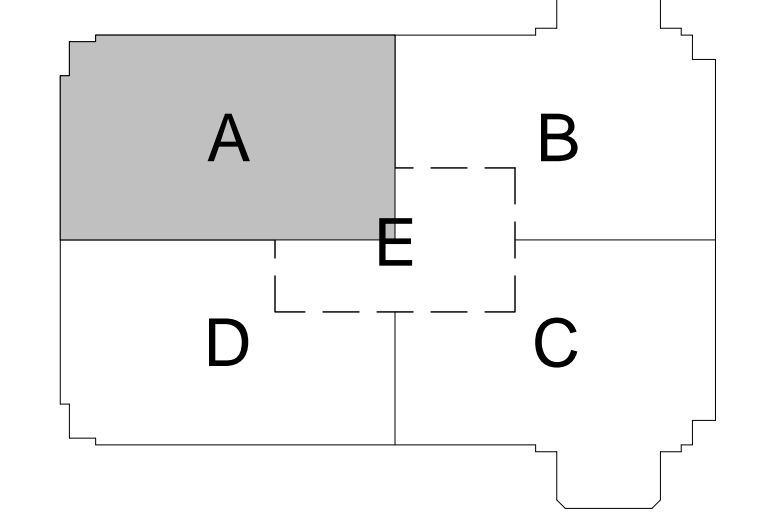
**NOT FOR  
CONSTRUCTION**



**SAN FRANCISCO WAR MEMORIAL  
VETRANS BUILDING SEISMIC  
UPGRADE & IMPROVEMENTS**

**KAI-YEE WOO  
& ASSOCIATES**  
FF&E ASSET MANAGEMENT SERVICES  
601 VAN NESS AVENUE SUITE E3617  
SAN FRANCISCO, CALIFORNIA USA 94102  
T: 415.202.5968  
design@kaiyewoo.com

REVIEWED AND APPROVED BY  
DATE



Issue: 2014-04-08  
**FF&E DESIGN DEVELOPMENT**

No.	Date	Revisions
01	2013.12.23	FF&E PROGRESS PRINT
02	2014.01.22	FF&E PROGRESS SIGN-OFF SET
03	2014.01.23	FF&E PROBABLE COST REPORT
04	2014.01.30	FF&E TECHNICAL COORDINATION
05	2014.02.24	FF&E PROBABLE COST REPORT R1
06	2014.04.09	FF&E 100% CD SIGN-OFF

Drawn: AAW  
Proj. Arch:  
Proj. Mgr:  
Section Head:  
Phase:  
Drawing Title:

**FF&E MANAGEMENT  
ENLARGED BASEMENT  
PLAN AREA A**

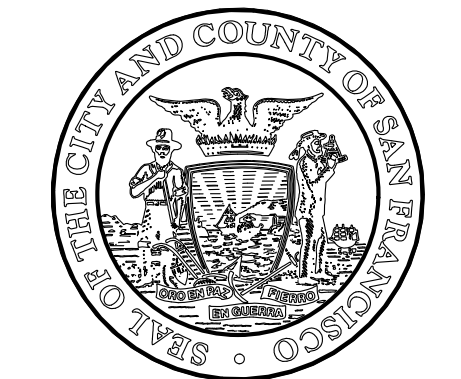
Sheet No. **FFE210.A**

Scale: 1/4" = 1'-0"  
Job No. **7352A**



X:\KWA Interior Design Project Files\2013 Design Project\WMB\Drawings\FF&E REVIT MODEL\7352A-KWA-FF&E\Recovery.rvt

4/9/2014 2:37:54 PM



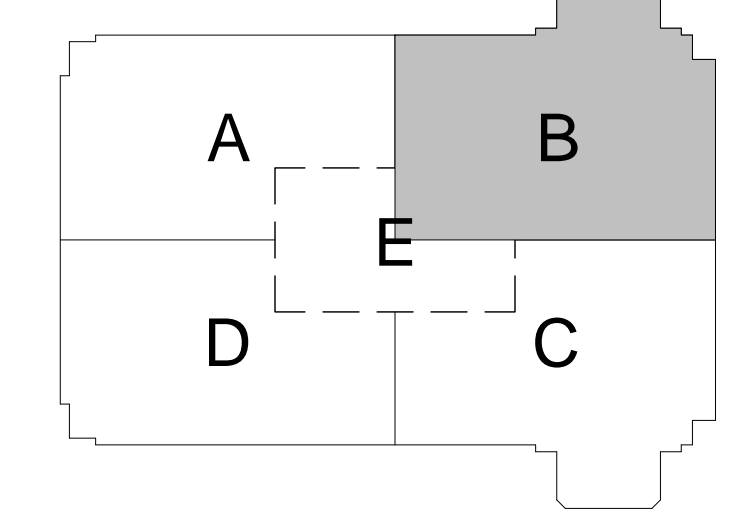
Julia Laue - Principal Architect/Division Manager  
30 Van Ness Avenue Suite 4100  
San Francisco, CA 94102-4700 (415)957-4700  
94102-6028 Fax (415)957-4701

**SAN FRANCISCO WAR MEMORIAL  
VETERANS BUILDING SEISMIC  
UPGRADE & IMPROVEMENTS**

401 Van Ness Avenue  
San Francisco, CA 94102-4522

**KAI-YEE WOO  
& ASSOCIATES**  
FF&E ASSET MANAGEMENT SERVICES  
601 VAN NESS AVENUE SUITE E3617  
SAN FRANCISCO, CALIFORNIA USA 94102  
T: 415.202.5968  
design@kaiyewoo.com

REVIEWED AND APPROVED BY  
DATE



Issue 2014-04-08

**FF&E DESIGN DEVELOPMENT**

No.	Date	Revisions
01	2013.12.23	FF&E PROGRESS PRINT
02	2014.01.22	FF&E PROGRESS SIGN-OFF SET
03	2014.01.23	FF&E PROBABLE COST REPORT
04	2014.01.30	FF&E TECHNICAL COORDINATION
05	2014.02.24	FF&E PROBABLE COST REPORT R1
06	2014.04.09	FF&E 100% CD SIGN-OFF

Drawn: AAW  
Proj. Arch:  
Proj. Mgr:  
Section Head:  
Phase:  
Drawing Title:

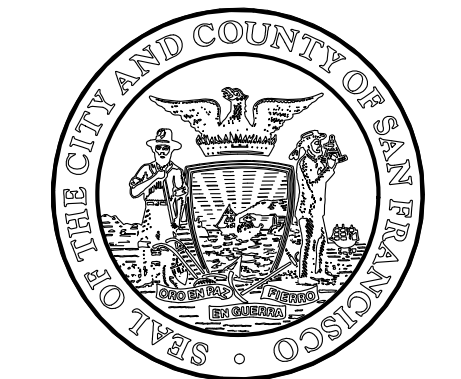
**FF&E MANAGEMENT  
ENLARGED BASEMENT  
PLAN AREA B**

Sheet No. **FFE210.B**

Scale: 1/4" = 1'-0"  
Job No. **7352A**

**NOT FOR  
CONSTRUCTION**

X:\KAWA Interior Design Project Folders 2\2013 Design Projects\WMB\Drawings\FF&E REVIT MODEL\7352A-KYWA-FF&E\Recovery\J.ctb 4/9/2014 2:38:04 PM



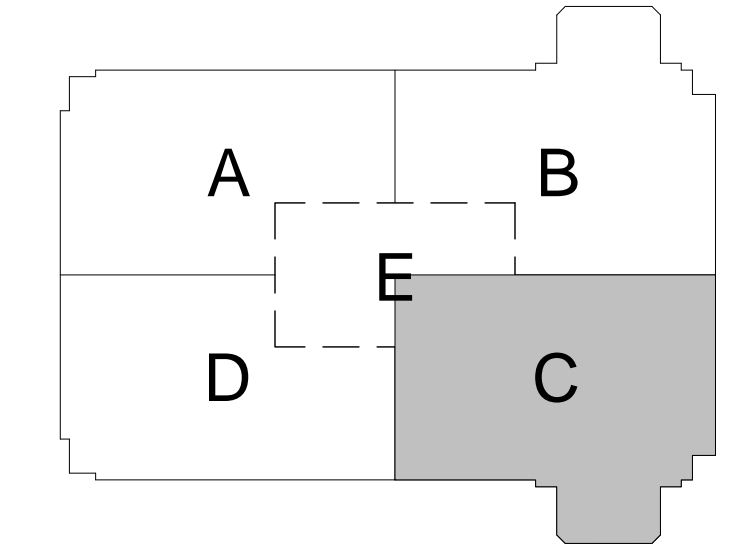
Julia Laue - Principal Architect/Division Manager  
30 Van Ness Avenue Suite 4100  
San Francisco, CA 94102-4700 (415)557-4700  
94102-6028 Fax (415)557-4701

**SAN FRANCISCO WAR MEMORIAL  
VETERANS BUILDING SEISMIC  
UPGRADE & IMPROVEMENTS**

401 Van Ness Avenue  
San Francisco, CA 94102-4522

**KAI-YEE WOO  
& ASSOCIATES**  
FF&E ASSET MANAGEMENT SERVICES  
601 VAN NESS AVENUE SUITE E3617  
SAN FRANCISCO, CALIFORNIA USA 94102  
T: 415.202.5968  
design@kaiyewoo.com

REVIEWED AND APPROVED BY  
DATE



Issue 2014-04-08

**FF&E DESIGN DEVELOPMENT**

No.	Date	Revisions
01	2013.12.23	FF&E PROGRESS PRINT
02	2014.01.22	FF&E PROGRESS SIGN-OFF SET
03	2014.01.23	FF&E PROBABLE COST REPORT
04	2014.01.30	FF&E TECHNICAL COORDINATION
05	2014.02.24	FF&E PROBABLE COST REPORT R1
06	2014.04.09	FF&E 100% CD SIGN-OFF

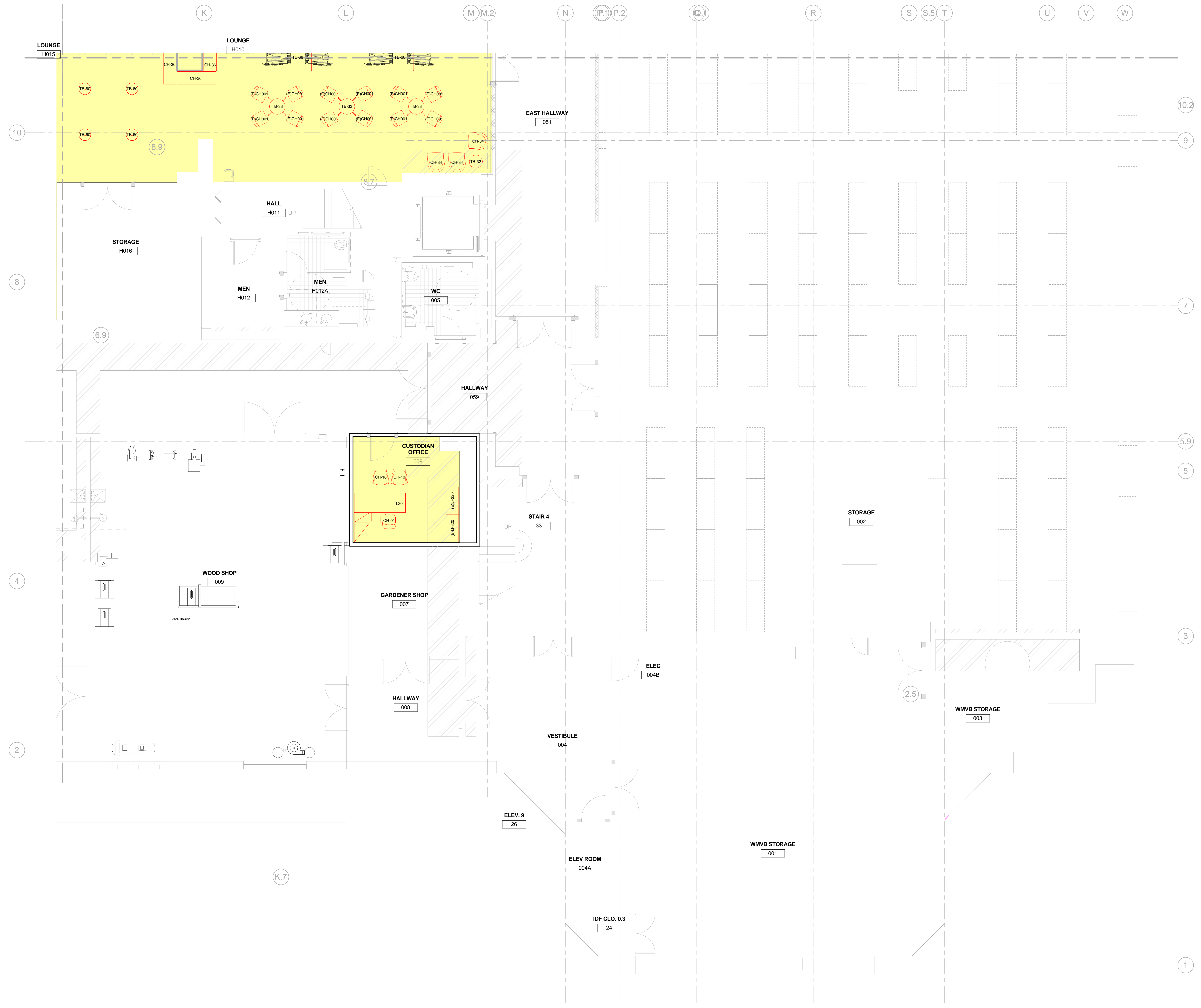
Drawn: AAW  
Proj. Arch:  
Proj. Mgr:  
Section Head:  
Phase:  
Drawing Title:

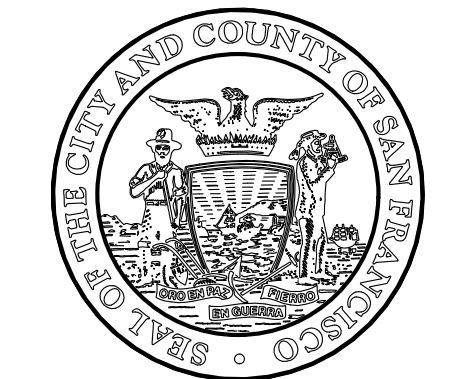
**FF&E MANAGEMENT  
ENLARGED BASEMENT  
PLAN AREA C**

Sheet No. **FFE210.C**

Scale: 1/4" = 1'-0"  
Job No. **7352A**

**NOT FOR  
CONSTRUCTION**





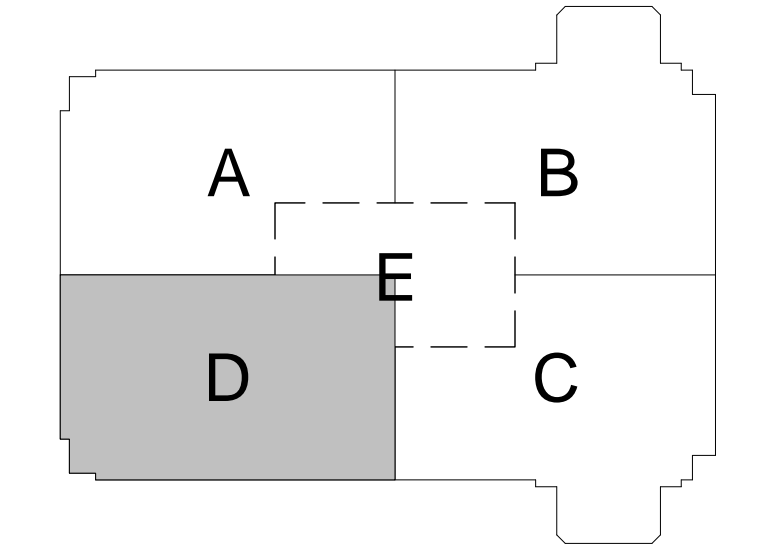
Julia Laue - Principal Architect/Division Manager  
30 Van Ness Avenue Suite 4100  
San Francisco, CA 94102-4700 (415)557-4700  
94102-6028 Fax (415)557-4701

**SAN FRANCISCO WAR MEMORIAL VETERANS BUILDING SEISMIC UPGRADE & IMPROVEMENTS**

401 Van Ness Avenue  
San Francisco, CA 94102-4522

**KAI-YEE WOO & ASSOCIATES**  
FF&E ASSET MANAGEMENT SERVICES  
601 VAN NESS AVENUE SUITE E3617  
SAN FRANCISCO, CALIFORNIA USA 94102  
T: 415.202.5968  
design@kaiyewoo.com

REVIEWED AND APPROVED BY  
DATE



Issue 2014-04-08  
**FF&E DESIGN DEVELOPMENT**

No.	Date	Revisions
01	2013.12.23	FF&E PROGRESS PRINT
02	2014.01.22	FF&E PROGRESS SIGN-OFF SET
03	2014.01.23	FF&E PROBABLE COST REPORT
04	2014.01.30	FF&E TECHNICAL COORDINATION
05	2014.02.24	FF&E PROBABLE COST REPORT R1
06	2014.04.09	FF&E 100% CD SIGN-OFF

Drawn: AAW  
Proj. Arch:  
Proj. Mgr:  
Section Head:  
Phase:  
Drawing Title:

**FF&E MANAGEMENT ENLARGED BASEMENT PLAN AREA D**

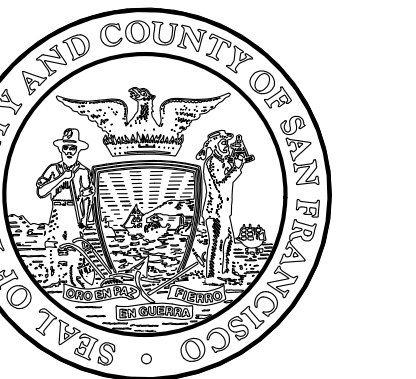
Sheet No. **FFE210.D**

Scale: 1/4" = 1'-0"  
Job No. **7352A**

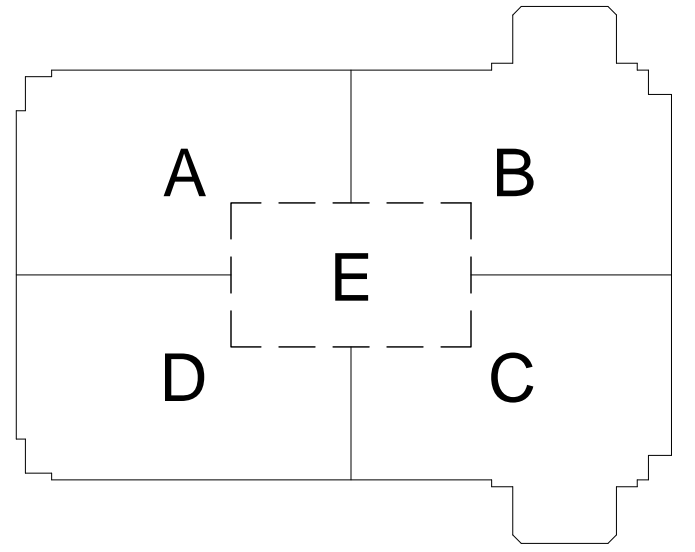


X:\KWA Interior Design Project Folder 2\2013 Design Project\WMB\Drawings\FF&E REVIT MODEL\7352A-KYWA-FF&E[Revised].rvt  
4/9/2014 2:38:15 PM





REVIEWED AND APPROVED BY \_\_\_\_\_  
DATE \_\_\_\_\_



Issue \_\_\_\_\_ 2014-04-08

**FF&E DESIGN DEVELOPMENT**

No.	Date	Revisions
01	2013.12.23	FF&E PROGRESS PRINT
02	2014.01.22	FF&E PROGRESS SIGN-OFF SET
03	2014.01.23	FF&E PROBABLE COST REPORT
04	2014.01.30	FF&E TECHNICAL COORDINATION
05	2014.02.24	FF&E PROBABLE COST REPORT R1
06	2014.04.09	FF&E 100% CD SIGN-OFF

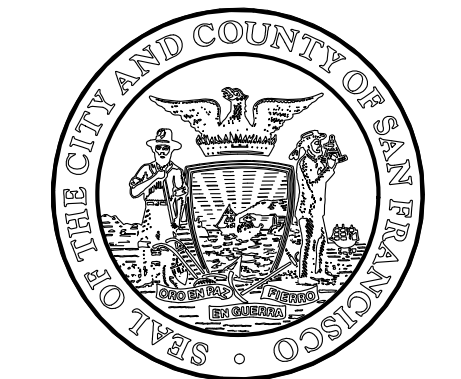
Drawn \_\_\_\_\_ AAW  
Proj. Arch. \_\_\_\_\_  
Proj. Mgr. \_\_\_\_\_  
Section Head \_\_\_\_\_  
Phase \_\_\_\_\_  
Drawing Title \_\_\_\_\_

**FF&E MANAGEMENT  
ENLARGED BASEMENT  
PLAN AREA E**

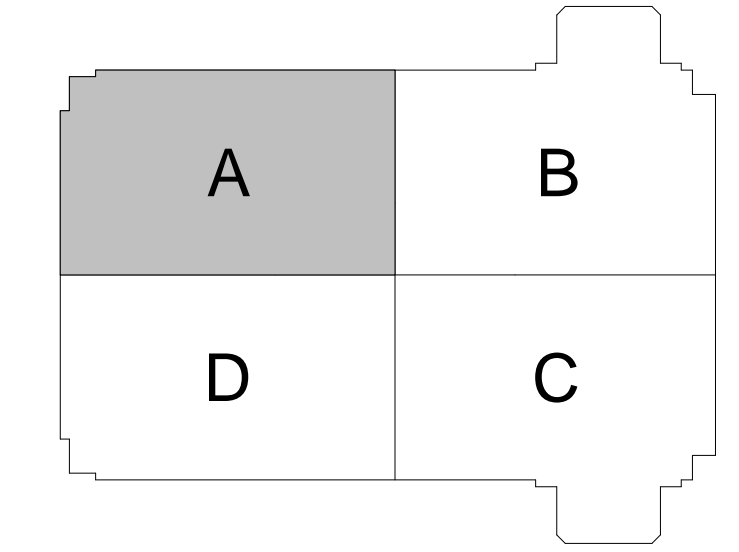
Sheet No. **FFE210.E**

Scale: 1/4" = 1'-0"  
Job No. **7352A**





REVIEWED AND APPROVED BY \_\_\_\_\_  
DATE \_\_\_\_\_



Issue \_\_\_\_\_ 2014-04-08

**FF&E DESIGN DEVELOPMENT**

No.	Date	Revisions
01	2013.12.23	FF&E PROGRESS PRINT
02	2014.01.22	FF&E PROGRESS SIGN-OFF SET
03	2014.01.23	FF&E PROBABLE COST REPORT
04	2014.01.30	FF&E TECHNICAL COORDINATION
05	2014.02.24	FF&E PROBABLE COST REPORT R1
06	2014.04.09	FF&E 100% CD SIGN-OFF

Drawn \_\_\_\_\_  
Prop. Arch. \_\_\_\_\_  
Proj. Mgr. \_\_\_\_\_  
Section Head \_\_\_\_\_  
Phase \_\_\_\_\_  
Drawing Title \_\_\_\_\_

**FF&E MANAGEMENT  
ENLARGED FIRST FLOOR  
PLAN AREA A**

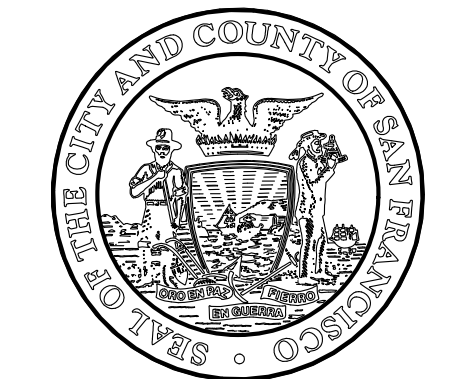
Sheet No. **FFE211.A**

Scale: 1/4" = 1'-0"  
Job No. **7352A**

**NOT FOR  
CONSTRUCTION**



X:\KWA Interior Design Project Folder 2\2013 Design Project\WMB\Drawings\FF&E REVIT MODEL\7352A-KYWA-FF&E\Recovery.rvt



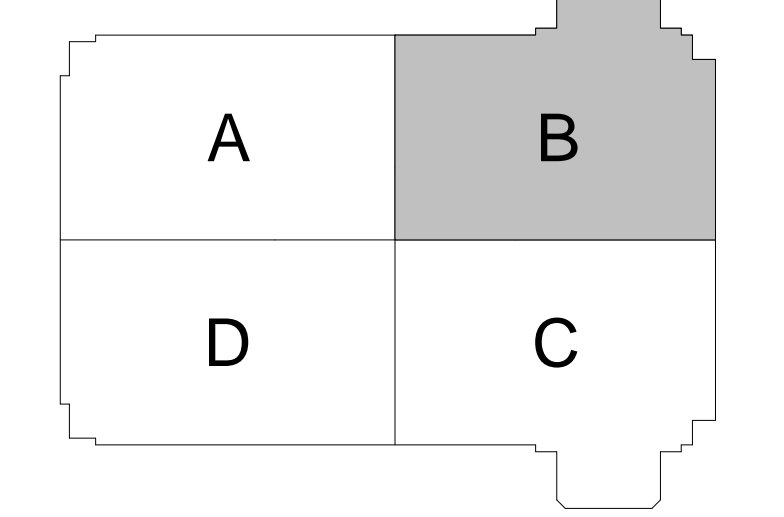
Julia Laue - Principal Architect/Division Manager  
30 Van Ness Avenue Suite 4100  
San Francisco, CA 94102-4700 (415)557-4700  
94102-6028 Fax (415)557-4701

**SAN FRANCISCO WAR MEMORIAL  
VETERANS BUILDING SEISMIC  
UPGRADE & IMPROVEMENTS**

401 Van Ness Avenue  
San Francisco, CA 94102-4522

**KAI-YEE WOO  
& ASSOCIATES**  
FF&E ASSET MANAGEMENT SERVICES  
601 VAN NESS AVENUE SUITE E3617  
SAN FRANCISCO, CALIFORNIA USA 94102  
T: 415.202.5968  
design@kaiyeewoo.com

REVIEWED AND APPROVED BY  
DATE



Issue 2014-04-08

**FF&E DESIGN DEVELOPMENT**

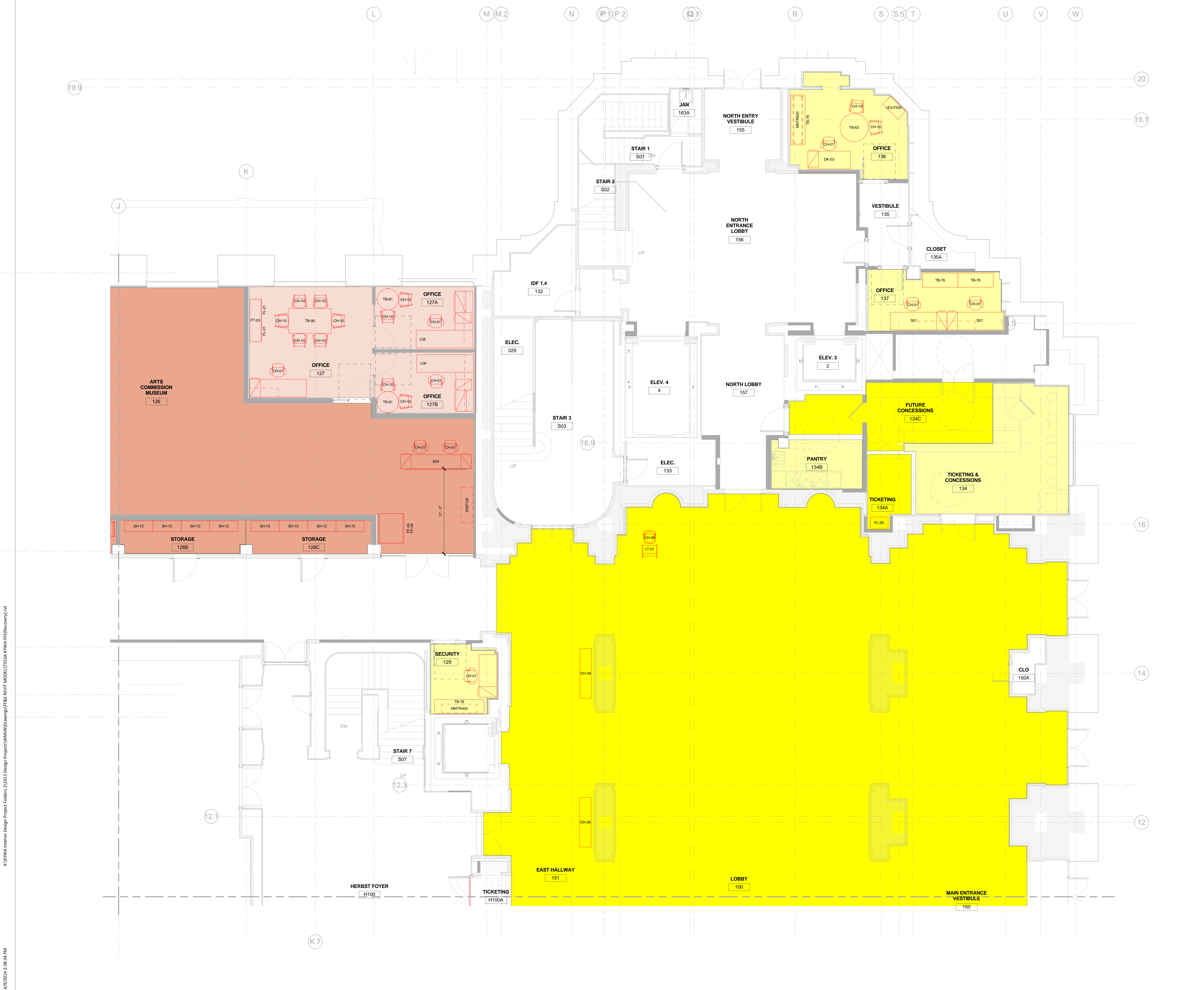
No.	Date	Revisions
01	2013.12.23	FF&E PROGRESS PRINT
02	2014.01.22	FF&E PROGRESS SIGN-OFF SET
03	2014.01.23	FF&E PROBABLE COST REPORT
04	2014.01.30	FF&E TECHNICAL COORDINATION
05	2014.02.24	FF&E PROBABLE COST REPORT R1
06	2014.04.09	FF&E 100% CD SIGN-OFF

Drawn: AAW  
Proj. Arch:  
Proj. Mgr:  
Section Head:  
Phase:  
Drawing Title:

**FF&E MANAGEMENT  
ENLARGED FIRST FLOOR  
PLAN AREA B**

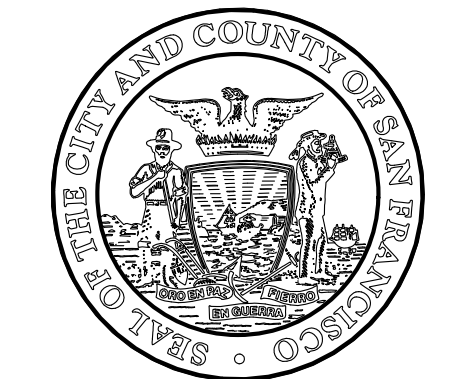
Sheet No. **FFE211.B**

Scale: 1/4" = 1'-0"  
Job No. **7352A**



X:\KWWA Interior Design Project Folders 2013 Design Project\WMB\Drawings\FF&E REVIT MODEL\7352A-KYWA-FF&E\Recovery\1.rvt  
4/9/2014 2:38:34 PM

**NOT FOR CONSTRUCTION**



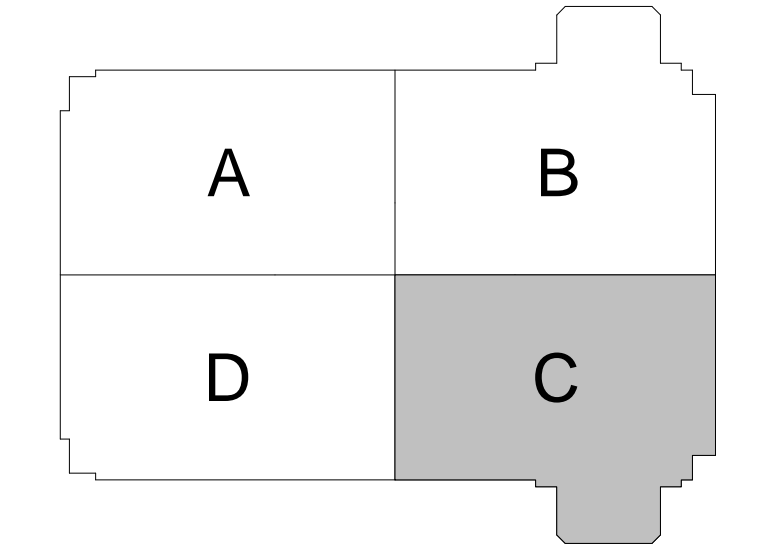
Julia Laue - Principal Architect/Division Manager  
30 Van Ness Avenue Suite 4100  
San Francisco, CA 94102-4700 (415)557-4700  
94102-6028 Fax (415)557-4701

**SAN FRANCISCO WAR MEMORIAL  
VETERANS BUILDING SEISMIC  
UPGRADE & IMPROVEMENTS**

401 Van Ness Avenue  
San Francisco, CA 94102-4522

**KAI-YEE WOO  
& ASSOCIATES**  
FF&E ASSET MANAGEMENT SERVICES  
601 VAN NESS AVENUE SUITE E3617  
SAN FRANCISCO, CALIFORNIA USA 94102  
T: 415.202.5968  
design@kaiyeewoo.com

REVIEWED AND APPROVED BY  
DATE



Issue 2014-04-08

**FF&E DESIGN DEVELOPMENT**

No.	Date	Revisions
01	2013.12.23	FF&E PROGRESS PRINT
02	2014.01.22	FF&E PROGRESS SIGN-OFF SET
03	2014.01.23	FF&E PROBABLE COST REPORT
04	2014.01.30	FF&E TECHNICAL COORDINATION
05	2014.02.24	FF&E PROBABLE COST REPORT R1
06	2014.04.09	FF&E 100% CD SIGN-OFF

Drawn: AAW  
Proj. Arch:  
Proj. Mgr:  
Section Head:  
Phase:  
Drawing Title:

**FF&E MANAGEMENT  
ENLARGED FIRST FLOOR  
PLAN AREA C**

Sheet No. **FFE211.C**

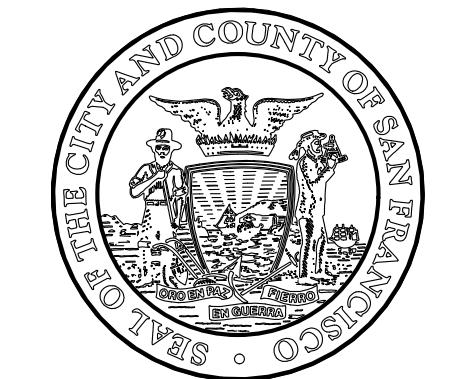
Scale: 1/4" = 1'-0"

Job No. **7352A**

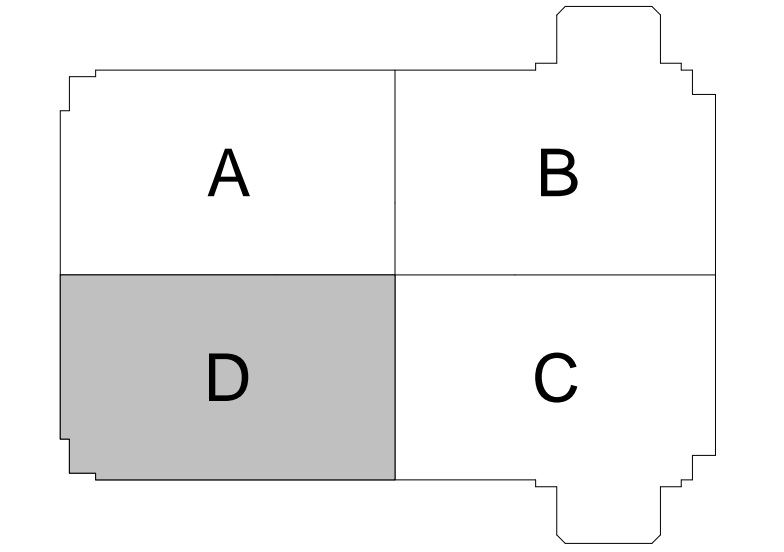
**NOT FOR  
CONSTRUCTION**



X:\KWA Interior Design Project Folders 2013\Design Project\WMB\Drawings\FF&E REVIT MODEL\7352A-KYWA-FF&E[Recovery].rvt  
4/9/2014 2:38:43 PM



REVIEWED AND APPROVED BY  
DATE



Issue 2014-04-08

**FF&E DESIGN DEVELOPMENT**

No.	Date	Revisions
01	2013.12.23	FF&E PROGRESS PRINT
02	2014.01.22	FF&E PROGRESS SIGN-OFF SET
03	2014.01.23	FF&E PROBABLE COST REPORT
04	2014.01.30	FF&E TECHNICAL COORDINATION
05	2014.02.24	FF&E PROBABLE COST REPORT R1
06	2014.04.09	FF&E 100% CD SIGN-OFF

Drawn: AAW  
Proj. Arch:  
Proj. Mgr:  
Section Head:  
Phase:  
Drawing Title:

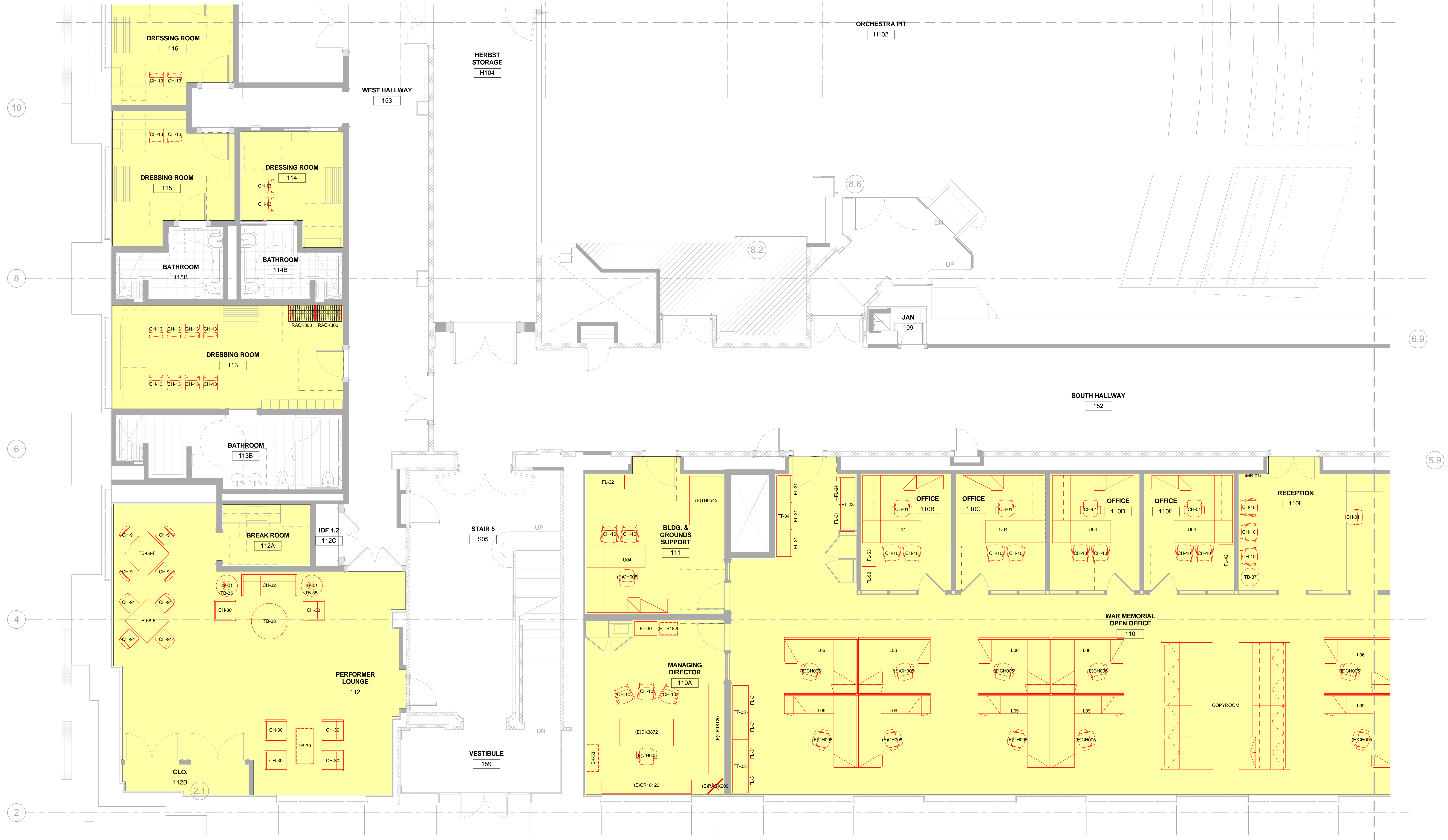
**FF&E MANAGEMENT  
ENLARGED FIRST FLOOR  
PLAN AREA D**

Sheet No. **FFE211.D**

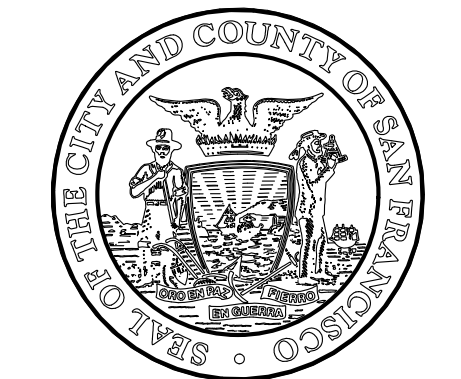
Scale: 1/4" = 1'-0"  
Job No. **7352A**

X:\KAWA Interior Design Project Folder\2013 Design Project\WMB\Drawings\FF&E REVIT MODEL\7352A-KYWA-FF&E[Recovery].rvt

4/9/2014 2:38:52 PM



**NOT FOR  
CONSTRUCTION**



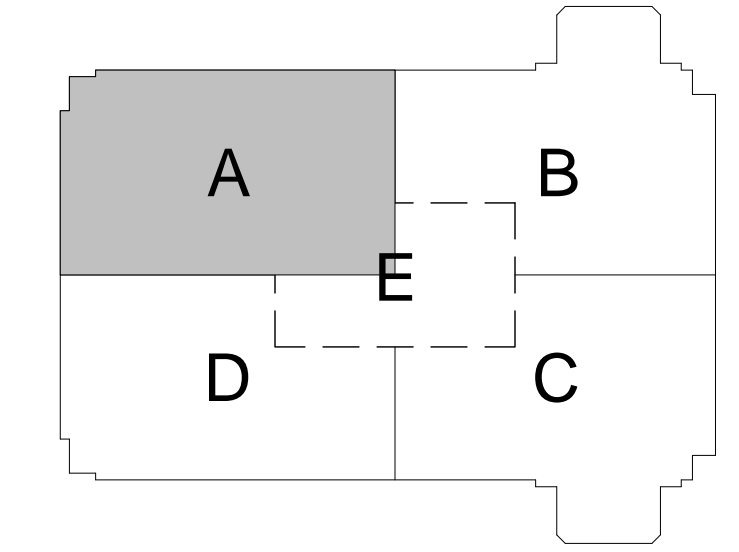
Julia Laue - Principal Architect/Division Manager  
30 Van Ness Avenue Suite 4100  
San Francisco, CA 94102-4008 (415)957-4700  
Project Fax (415)957-4701

**SAN FRANCISCO WAR MEMORIAL  
VETERANS BUILDING SEISMIC  
UPGRADE & IMPROVEMENTS**

401 Van Ness Avenue  
San Francisco, CA 94102-4522  
Consultant

**KAI-YEE WOO  
& ASSOCIATES**  
FF&E ASSET MANAGEMENT SERVICES  
601 VAN NESS AVENUE SUITE E3617  
SAN FRANCISCO, CALIFORNIA USA 94102  
T: 415.202.5968  
design@kaiyewoo.com

REVIEWED AND APPROVED BY  
DATE



Issue 2014-04-08

**FF&E DESIGN DEVELOPMENT**

No.	Date	Revisions
01	2013.12.23	FF&E PROGRESS PRINT
02	2014.01.22	FF&E PROGRESS SIGN-OFF SET
03	2014.01.23	FF&E PROBABLE COST REPORT
04	2014.01.30	FF&E TECHNICAL COORDINATION
05	2014.02.24	FF&E PROBABLE COST REPORT R1
06	2014.04.09	FF&E 100% CD SIGN-OFF

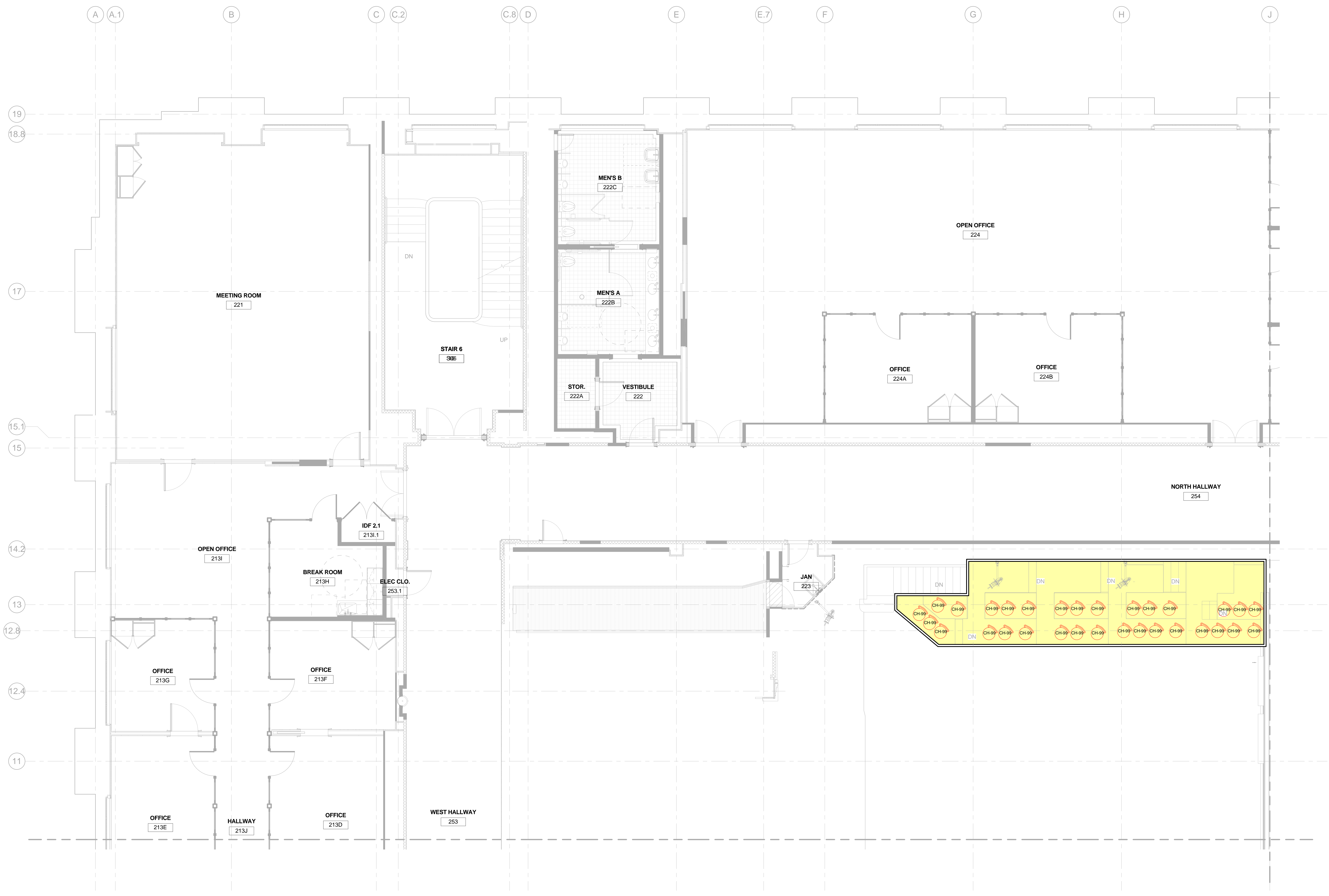
Drawn: AAW  
Proj. Arch:  
Proj. Mgr:  
Section Head:  
Phase:  
Drawing Title:

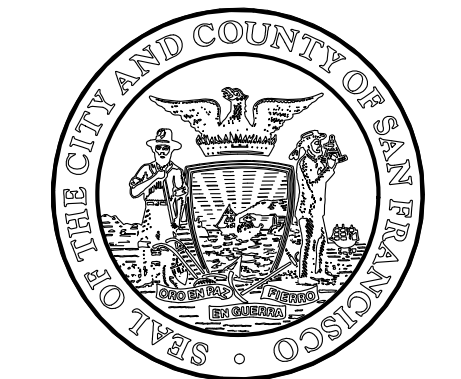
**FF&E MANAGEMENT  
ENLARGED SECOND FLOOR  
PLAN AREA A**

Sheet No. **FFE212.A**

Scale: 1/4" = 1'-0"  
Job No. **7352A**

NOT FOR  
CONSTRUCTION





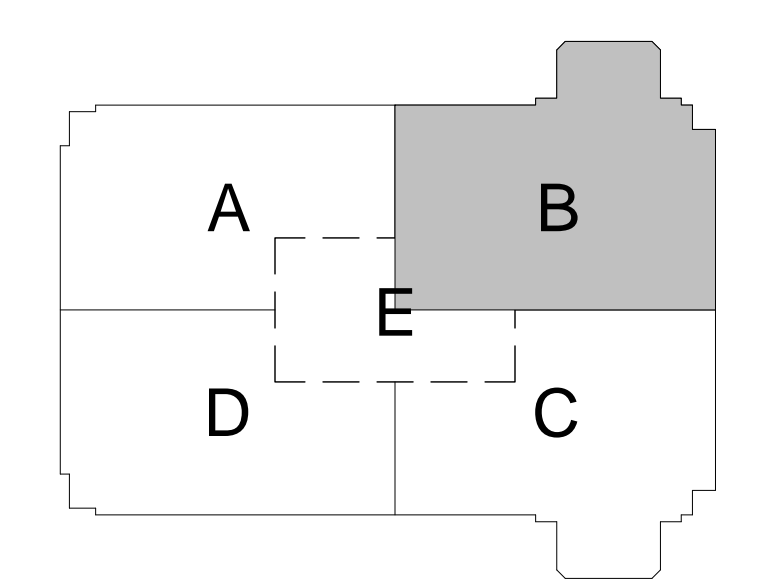
Julia Laue - Principal Architect/Division Manager  
30 Van Ness Avenue Suite 4100  
San Francisco, CA 94102-6028 (415)957-4700  
Project Fax (415)957-4701

**SAN FRANCISCO WAR MEMORIAL  
VETRANS BUILDING SEISMIC  
UPGRADE & IMPROVEMENTS**

401 Van Ness Avenue  
San Francisco, CA 94102-4522

**KAI-YEE WOO  
& ASSOCIATES**  
FF&E ASSET MANAGEMENT SERVICES  
601 VAN NESS AVENUE SUITE E3617  
SAN FRANCISCO, CALIFORNIA USA 94102  
T: 415.202.5968  
design@kaiyewoo.com

REVIEWED AND APPROVED BY  
DATE



Issue 2014-04-08

**FF&E DESIGN DEVELOPMENT**

No.	Date	Revisions
01	2013.12.23	FF&E PROGRESS PRINT
02	2014.01.22	FF&E PROGRESS SIGN-OFF SET
03	2014.01.23	FF&E PROBABLE COST REPORT
04	2014.01.30	FF&E TECHNICAL COORDINATION
05	2014.02.24	FF&E PROBABLE COST REPORT R1
06	2014.04.09	FF&E 100% CD SIGN-OFF

Drawn: AAW  
Proj. Arch:  
Proj. Mgr:  
Section Head:  
Phase:  
Drawing Title:

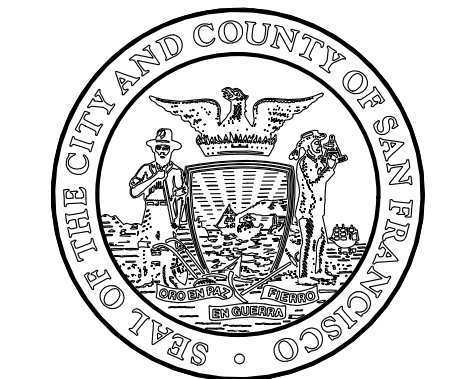
**FF&E MANAGEMENT  
ENLARGED SECOND FLOOR  
PLAN AREA B**

Sheet No. **FFE212.B**

Scale: 1/4" = 1'-0"  
Job No. **7352A**



X:\KWWA Interior Design Project Folders 2\2013 Design Project\WMB\Drawings\FF&E REVIT MODEL\7352A-KWWA-FF&E\Recovery1.rvt  
4/9/2014 2:39:13 PM



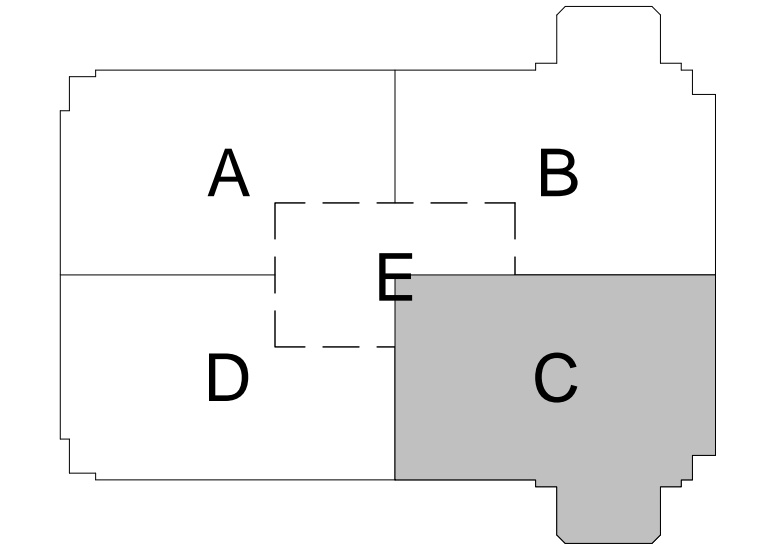
Julia Laue - Principal Architect/Division Manager  
30 Van Ness Avenue Suite 4100  
San Francisco, CA 94102-4700 (415)557-4700  
94102-6028 Fax (415)557-4701

**SAN FRANCISCO WAR MEMORIAL  
VETERANS BUILDING SEISMIC  
UPGRADE & IMPROVEMENTS**

401 Van Ness Avenue  
San Francisco, CA 94102-4522

**KAI-YEE WOO  
& ASSOCIATES**  
FF&E ASSET MANAGEMENT SERVICES  
601 VAN NESS AVENUE SUITE E3617  
SAN FRANCISCO, CALIFORNIA USA 94102  
T: 415.202.5968  
design@kaiyewoo.com

REVIEWED AND APPROVED BY  
DATE



Issue 2014-04-08

**FF&E DESIGN DEVELOPMENT**

No.	Date	Revisions
01	2013.12.23	FF&E PROGRESS PRINT
02	2014.01.22	FF&E PROGRESS SIGN-OFF SET
03	2014.01.23	FF&E PROBABLE COST REPORT
04	2014.01.30	FF&E TECHNICAL COORDINATION
05	2014.02.24	FF&E PROBABLE COST REPORT R1
06	2014.04.09	FF&E 100% CD SIGN-OFF

Drawn: AAW  
Proj. Arch:  
Proj. Mgr:  
Section Head:  
Phase:  
Drawing Title:

**FF&E MANAGEMENT  
ENLARGED SECOND FLOOR  
PLAN AREA C**

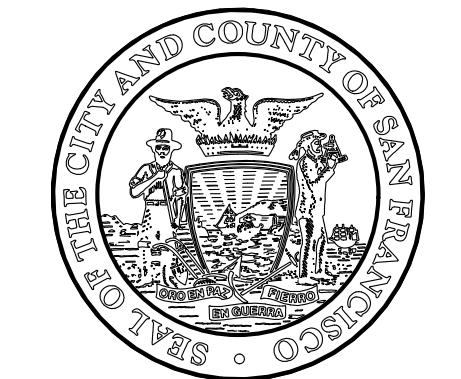
Sheet No. **FFE212.C**

Scale: 1/4" = 1'-0"  
Job No. **7352A**

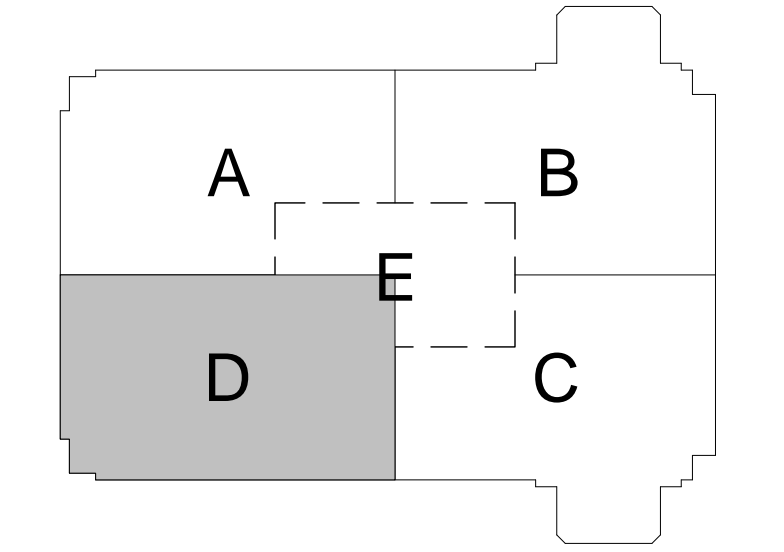


X:\KWA Interior Design Project Folder 2\2013 Design Project\WMB\Drawings\FF&E REVIT MODEL\7352A-KWA-FF&E\Recovery.rvt 4/9/2014 2:39:19 PM





REVIEWED AND APPROVED BY  
DATE



Issue 2014-04-08

**FF&E DESIGN DEVELOPMENT**

No.	Date	Revisions
01	2013.12.23	FF&E PROGRESS PRINT
02	2014.01.22	FF&E PROGRESS SIGN-OFF SET
03	2014.01.23	FF&E PROBABLE COST REPORT
04	2014.01.30	FF&E TECHNICAL COORDINATION
05	2014.02.24	FF&E PROBABLE COST REPORT R1
06	2014.04.09	FF&E 100% CD SIGN-OFF

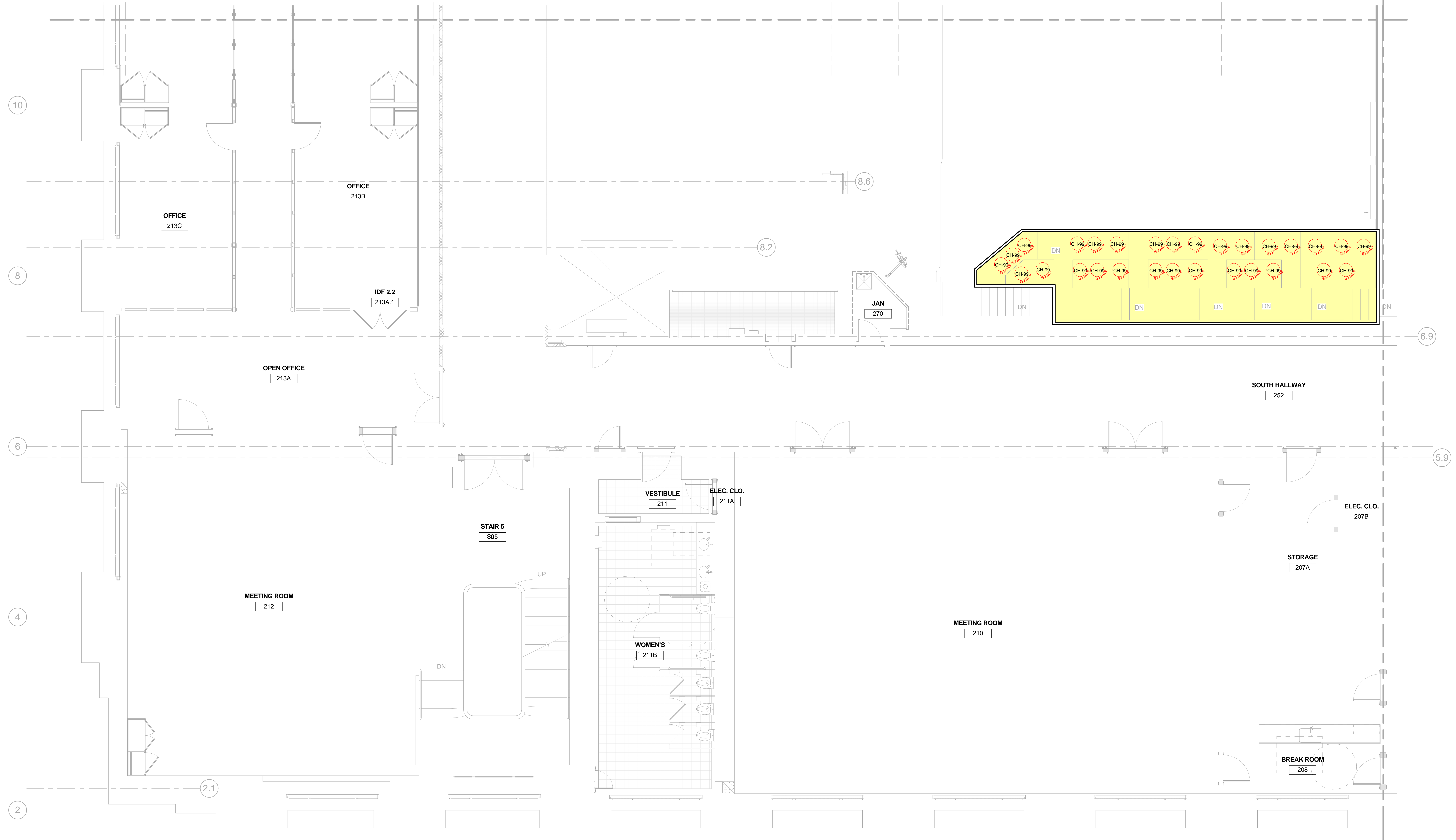
Drawn: AAW  
 Proj. Arch:  
 Proj. Mgr:  
 Section Head:  
 Phase:  
 Drawing Title:

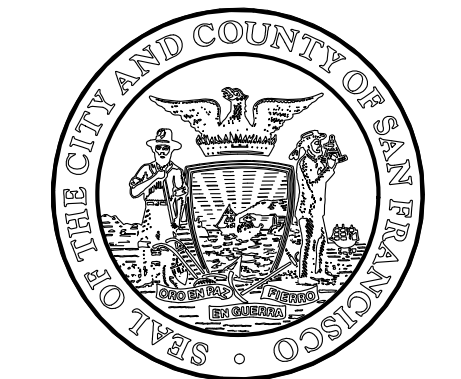
**FF&E MANAGEMENT  
ENLARGED SECOND FLOOR  
PLAN AREA D**

Sheet No. **FFE212.D**

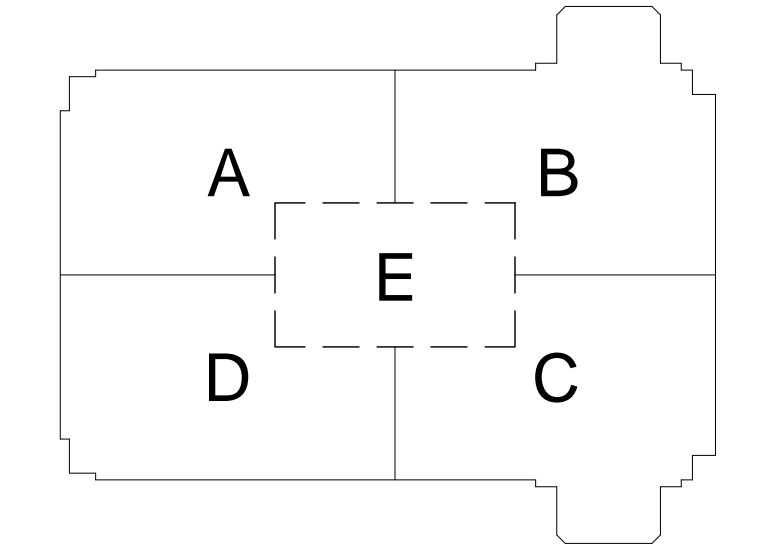
Scale: 1/4" = 1'-0"  
 Job No. **7352A**

**NOT FOR  
CONSTRUCTION**





REVIEWED AND APPROVED BY  
DATE



Issue 2014-04-08

**FF&E DESIGN DEVELOPMENT**

No.	Date	Revisions
01	2013.12.23	FF&E PROGRESS PRINT
02	2014.01.22	FF&E PROGRESS SIGN-OFF SET
03	2014.01.23	FF&E PROBABLE COST REPORT
04	2014.01.30	FF&E TECHNICAL COORDINATION
05	2014.02.24	FF&E PROBABLE COST REPORT R1
06	2014.04.09	FF&E 100% CD SIGN-OFF

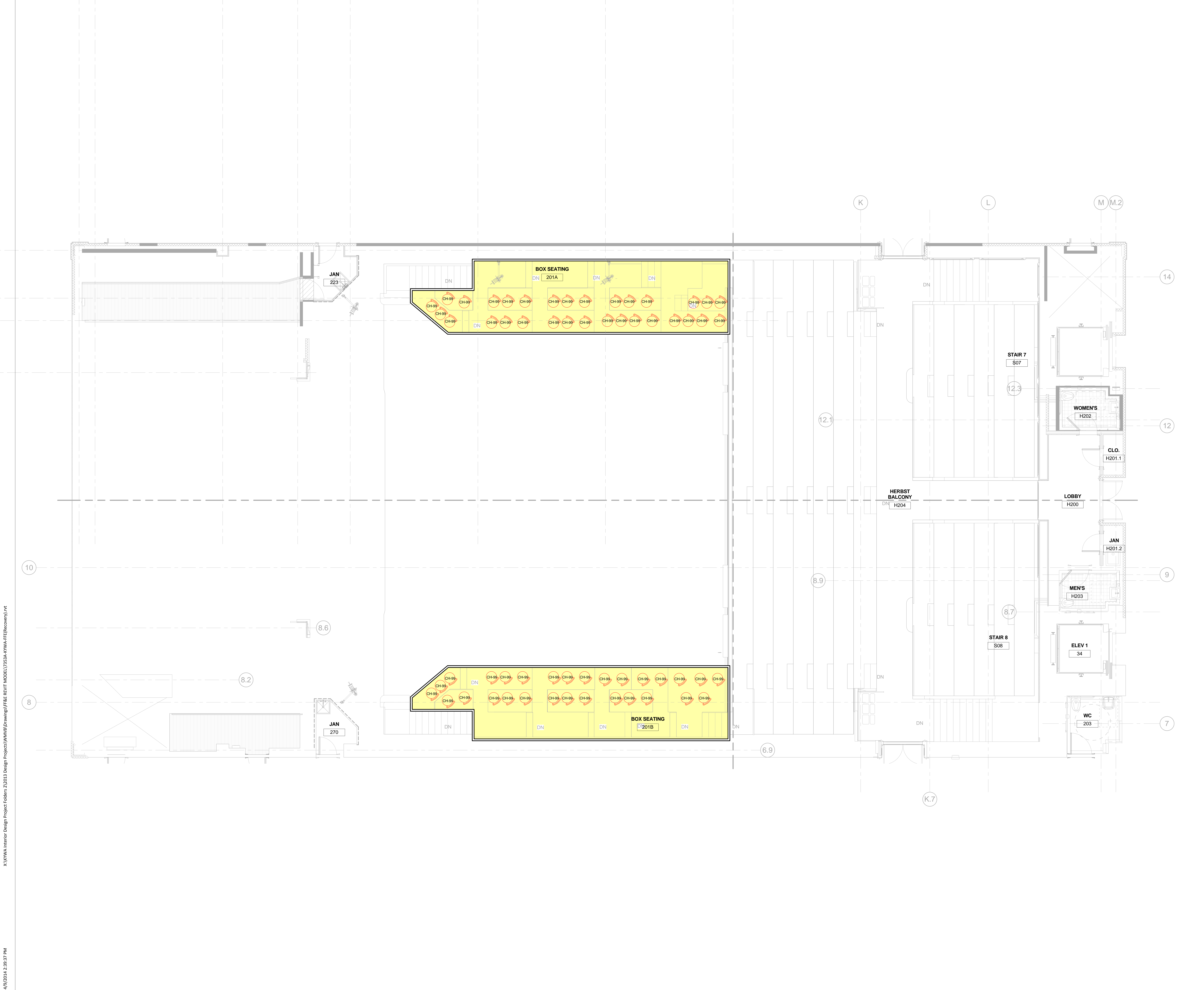
Drawn: AAW  
 Prop. Arch:  
 Proj. Mgr:  
 Section Head:  
 Phase:  
 Drawing Title:

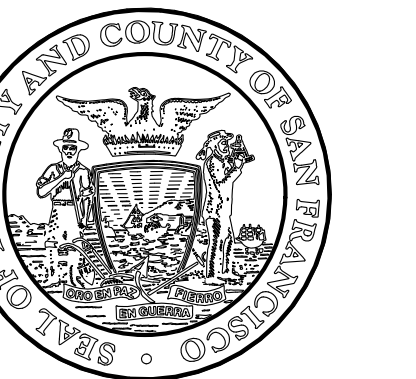
**FF&E MANAGEMENT  
ENLARGED SECOND FLOOR  
AREA PLAN E**

Sheet No. **FFE212.E**

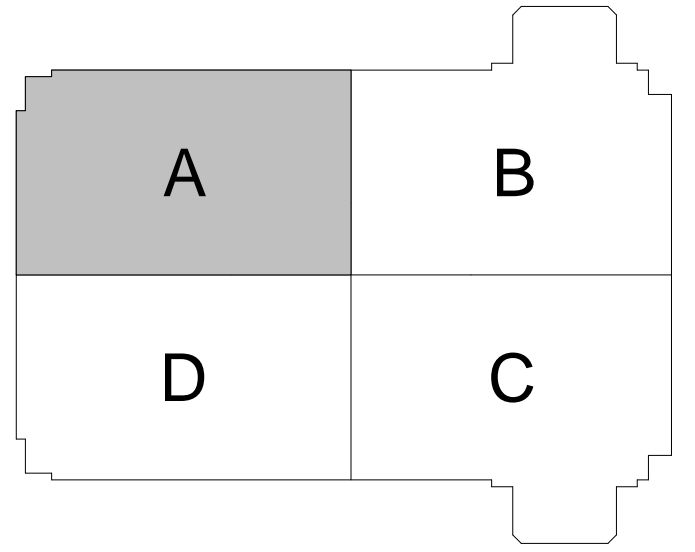
Scale: 1/4" = 1'-0"  
Job No. **7352A**

**NOT FOR  
CONSTRUCTION**





REVIEWED AND APPROVED BY  
DATE



Issue 2014-04-08

**FF&E DESIGN DEVELOPMENT**

No.	Date	Revisions
01	2013.12.23	FF&E PROGRESS PRINT
02	2014.01.22	FF&E PROGRESS SIGN-OFF SET
03	2014.01.23	FF&E PROBABLE COST REPORT
04	2014.01.30	FF&E TECHNICAL COORDINATION
05	2014.02.24	FF&E PROBABLE COST REPORT R1
06	2014.04.09	FF&E 100% CD SIGN-OFF

Drawn: AAW  
 Prop. Arch:  
 Prop. Mgr:  
 Section Head:  
 Phase:  
 Drawing Title:

**FF&E MANAGEMENT  
ENLARGED THIRD FLOOR  
PLAN AREA A**

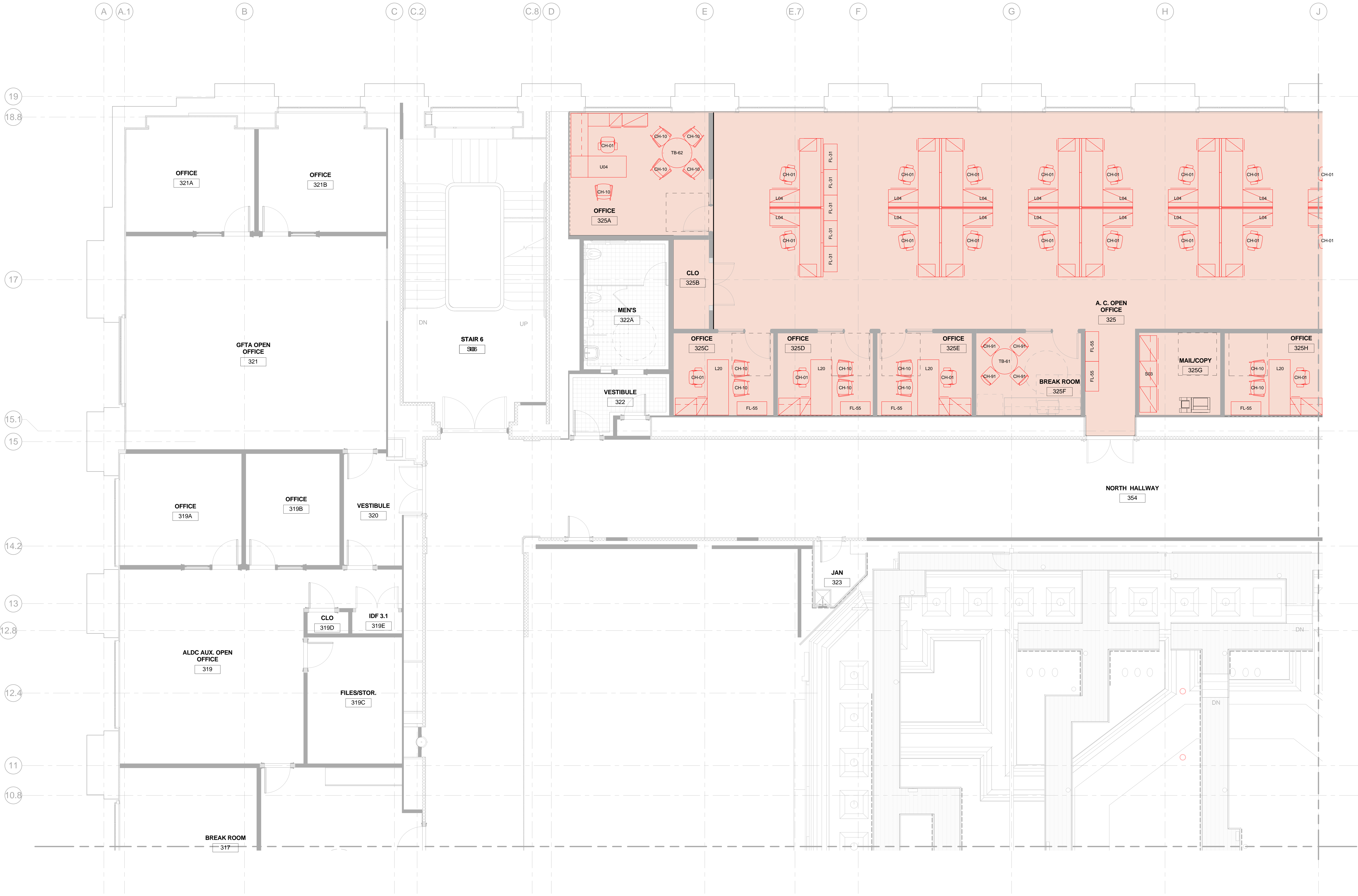
Sheet No. **FFE213.A**

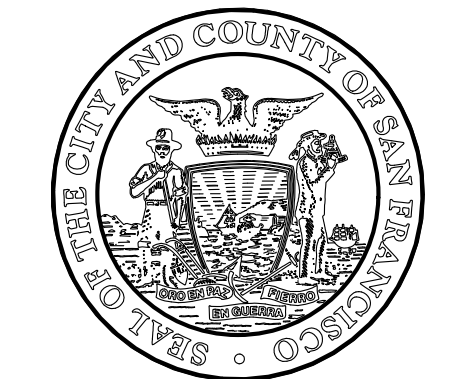
Scale: 1/4" = 1'-0"

Job No. **7352A**

X:\KWA Interior Design Project Folder\2013 Design Project\WMB\Drawings\F&E REVIT MODEL\7352A-KWA-FF&E\Recovery.rvt

4/9/2014 2:39:48 PM





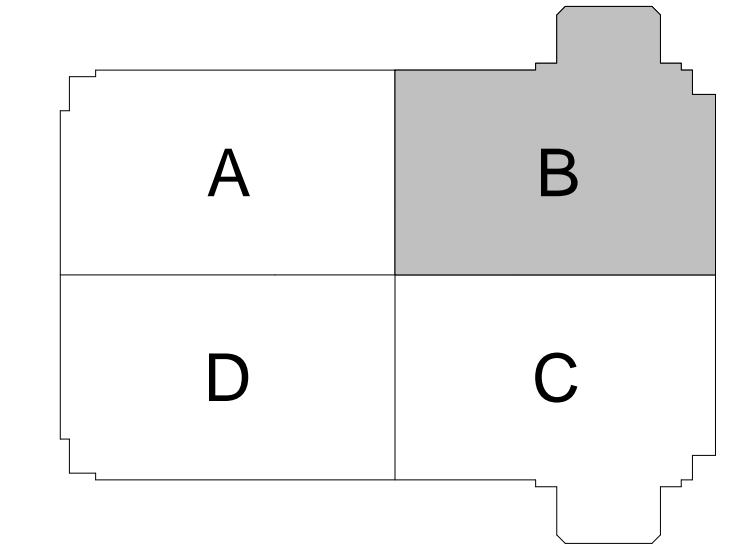
Julia Laue - Principal Architect/Division Manager  
30 Van Ness Avenue Suite 4100  
San Francisco, CA 94102-4700 (415)957-4700  
94102-6028 Fax (415)957-4701

**SAN FRANCISCO WAR MEMORIAL  
VETERANS BUILDING SEISMIC  
UPGRADE & IMPROVEMENTS**

401 Van Ness Avenue  
San Francisco, CA 94102-4522

**KAI-YEE WOO  
& ASSOCIATES**  
FF&E ASSET MANAGEMENT SERVICES  
601 VAN NESS AVENUE SUITE E3617  
SAN FRANCISCO, CALIFORNIA USA 94102  
T: 415.202.5968  
design@kaiyeewoo.com

REVIEWED AND APPROVED BY  
DATE



Issue 2014-04-08

**FF&E DESIGN DEVELOPMENT**

No.	Date	Revisions
01	2013.12.23	FF&E PROGRESS PRINT
02	2014.01.22	FF&E PROGRESS SIGN-OFF SET
03	2014.01.23	FF&E PROBABLE COST REPORT
04	2014.01.30	FF&E TECHNICAL COORDINATION
05	2014.02.24	FF&E PROBABLE COST REPORT R1
06	2014.04.09	FF&E 100% CD SIGN-OFF

Drawn: AAW  
Proj. Arch:  
Proj. Mgr:  
Section Head:  
Phase:  
Drawing Title:

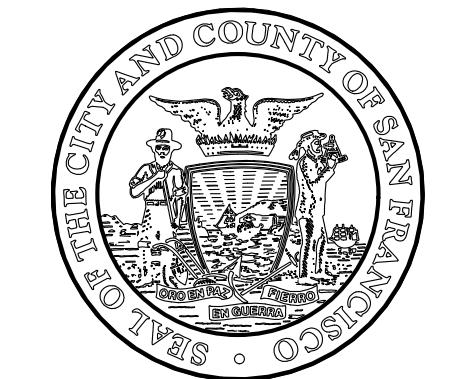
**FF&E MANAGEMENT  
ENLARGED THIRD FLOOR  
PLAN AREA B**

Sheet No. **FFE213.B**

Scale: 1/4" = 1'-0"  
Job No. **7352A**

X:\KAWA Interior Design Project Folders 2013 Design Project\WMMB\Drawings\FF&E REVIT MODEL\7352A-KYWA-FF&E\Recovery1.rvt  
4/9/2014 2:40:02 PM





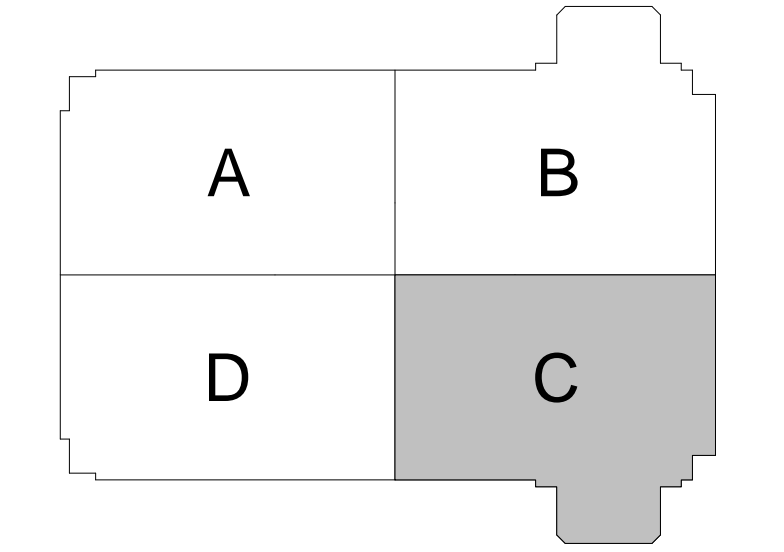
Julia Laue - Principal Architect/Division Manager  
30 Van Ness Avenue Suite 4100  
San Francisco, CA 94102-4008 (415)557-4700  
Project (415)557-4701

**SAN FRANCISCO WAR MEMORIAL  
VETERANS BUILDING SEISMIC  
UPGRADE & IMPROVEMENTS**

401 Van Ness Avenue  
San Francisco, CA 94102-4522

**KAI-YEE WOO  
& ASSOCIATES**  
FF&E ASSET MANAGEMENT SERVICES  
601 VAN NESS AVENUE SUITE E3617  
SAN FRANCISCO, CALIFORNIA USA 94102  
T: 415.202.5968  
design@kaiyeewoo.com

REVIEWED AND APPROVED BY  
DATE



Issue 2014-04-08

**FF&E DESIGN DEVELOPMENT**

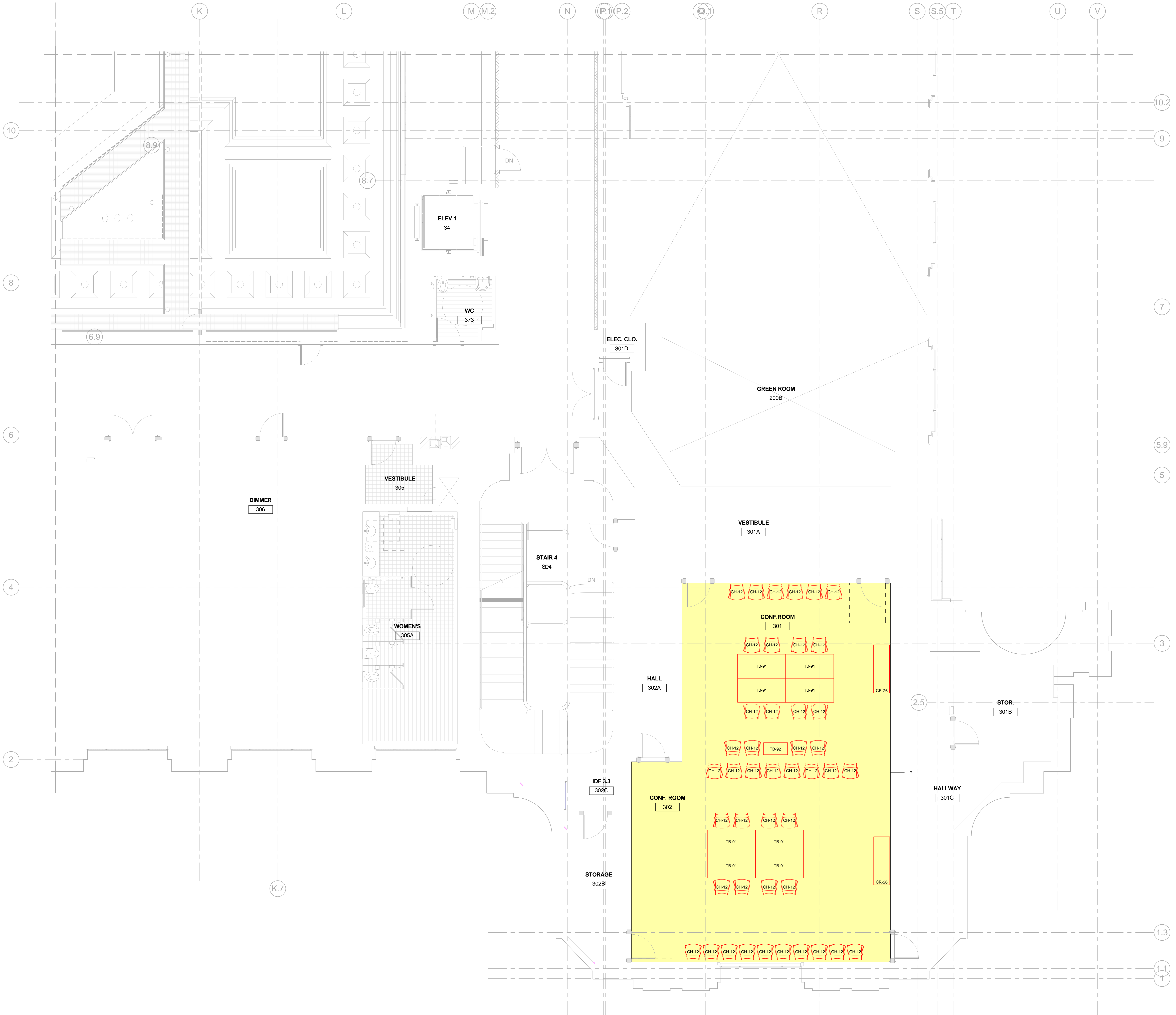
No.	Date	Revisions
01	2013.12.23	FF&E PROGRESS PRINT
02	2014.01.22	FF&E PROGRESS SIGN-OFF SET
03	2014.01.23	FF&E PROBABLE COST REPORT
04	2014.01.30	FF&E TECHNICAL COORDINATION
05	2014.02.24	FF&E PROBABLE COST REPORT R1
06	2014.04.09	FF&E 100% CD SIGN-OFF

Drawn: AAW  
Proj. Arch:  
Proj. Mgr:  
Section Head:  
Phase:  
Drawing Title:

**FF&E MANAGEMENT  
ENLARGED THIRD FLOOR  
PLAN AREA C**

Sheet No. **FFE213.C**

Scale: 1/4" = 1'-0"  
Job No. **7352A**



X:\KWWA Interior Design Project Folder 2\2013 Design Project\WMB\Drawings\FF&E REVIT MODEL\7352A-KYWA-FF&E\Recovery\1.rvt  
4/9/2014 2:40:09 PM

