



**2015/16 ART ON MARKET STREET KIOSK POSTER SERIES  
PUBLIC ART SELECTION  
QUALIFICATION PANEL AND PANEL ONE SUMMARY**

**QUALIFICATION PANEL**

**MEETING DATE**

May 21, 2014

**VOTING QUALIFICATION PANELISTS**

Elisheva Biernoff, Artist

Zoë Taleporos, Program Associate, Arts Commission

Justine Topfer, Project Manager, Arts Commission

**PROCESS**

The Qualification panel reviewed the submissions of 40 artists that responded to the 2015/16 Art on Market Street Kiosk Poster Series Request for Qualifications (posted April 8, 2014 – May 19, 2014).

Round One “Yes/No” majority votes based on the criteria of Artistic Excellence, Appropriate to Project Goals, and Ability to Respond to Project Theme yielded 13 artists to advance to Selection Panel One.

**SELECTION PANEL ONE**

**MEETING DATE**

May 22, 2014, 1 – 5 p.m.

**VOTING SELECTION PANEL ONE PANELISTS**

Elisheva Biernoff, Artist

Barbara Sklar, Arts Commissioner

Lex Leifheit, Director, SOMArts Cultural Center

**PROCESS**

The panel evaluated the work of 13 artists selected by the Qualification Panel using the following criteria and numeric scoring system (1=low score):

- Artistic Excellence (1-10)
- Appropriate to Project Theme (1-10)

**RESULTS**

The following six artists received the highest scores:

Leah Rosenberg	58
Andrea Bergen	56

Kelly Inouye	52
Jeremy Fish	51
Susie Cagle	39
Chelsea Wong	39

#### **ARTS COMMISISON APPROVAL**

Motion to approve the following finalists for the 2015/16 Art on Market Street Kiosk Posters Series as recommended by the Art on Market Street Selection Panel: Andrea Bergen, Susie Cagle, Jeremy Fish, Kelly Inouye, Leah Rosenberg and Chelsea Wong.

# Art on Market St kiosk poster series 2015/16

Andrea Bergen – Susie Cagle

Jeremy Fish – Kelly Inouye

Leah Rosenberg – Chelsea Wong

# Title: *birthday bash*

- In celebration of the SF City Hall Centenary
- Research what City events are planned?
- Meet with JT early July
- Work up proposals - July/August 2014
- 2nd Selection panel in mid September 2014 to select 3 artists
- Contract - November 2014







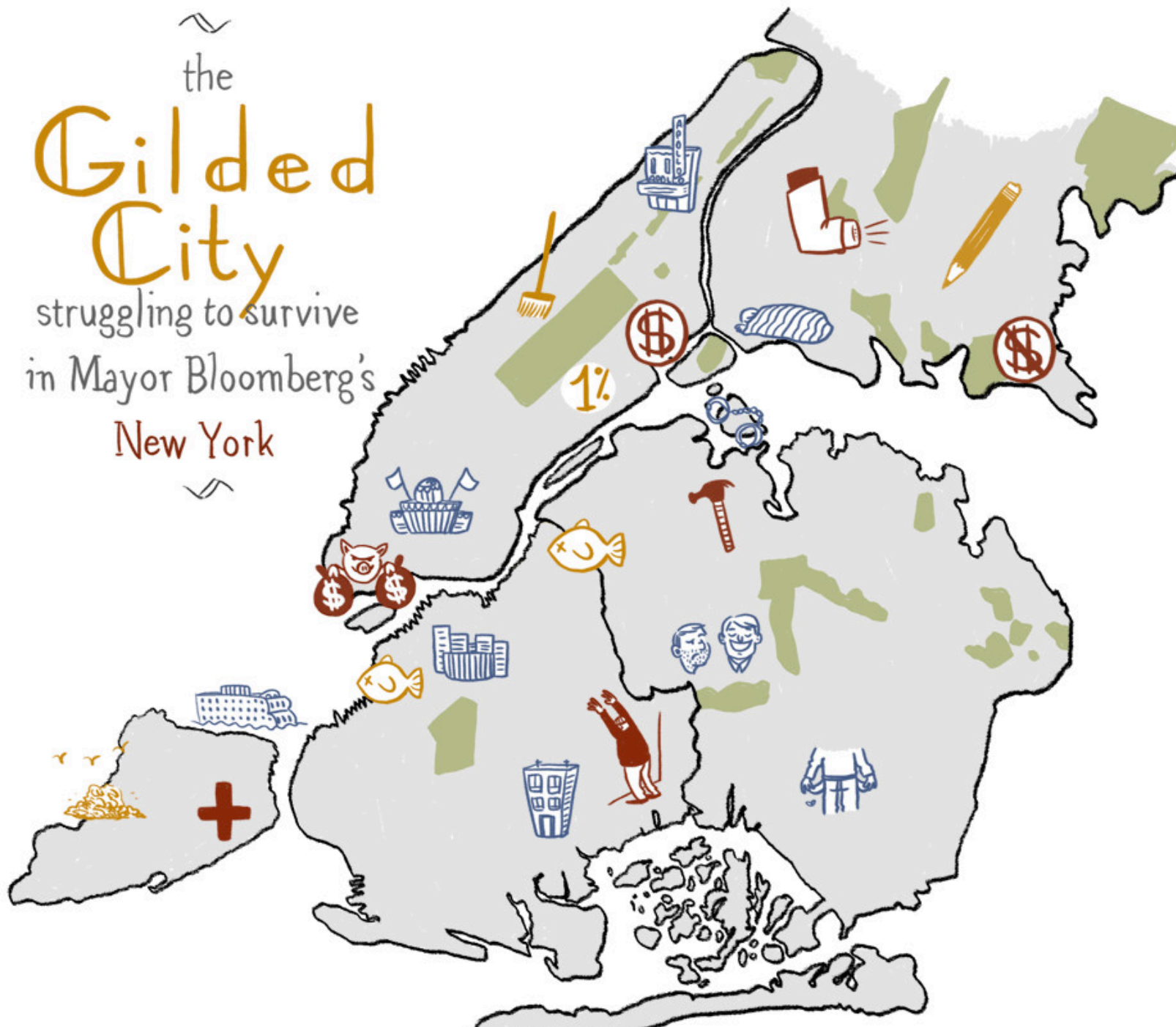




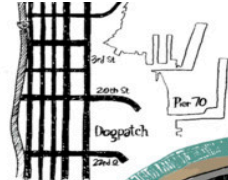


the  
**Gilded City**

struggling to survive  
in Mayor Bloomberg's  
New York







# CHOOSE YOUR OWN PIER 70

art: susie cagle  
text: matt baume



## You have 85 acres on the waterfront and two billion dollars... What would you build?

**A** once-bustling industrial site that has fallen into decay on San Francisco's waterfront, Pier 70 is facing a dramatic transformation. And in the next year, the Port of San Francisco will ask the public for feedback on as-yet-unwritten development plans.

The Port has been keen to redevelop the site for years. Though the agency has been consulting neighbors at every step, most San Franciscans would be hard pressed to find it on a map. It's just north of Warm Water Cove, at the eastern end of 20th Street.

Over the next decade, a variety of projects will rise from the ruins, with side-by-side zones including retail, artist spaces, biotech and a marina. For example, there will be co-op open spaces, but it could take the shape of anything from a metallic sculpture garden to a verdant wildflower meadow to something else altogether.

According to Project Manager Kathleen Diohep, construction alone will cost \$1.3 billion. That's in addition to expenses like historic building rehabilitation (\$355,000), infrastructure and site preparation (\$700,000), and new parkland (\$300,000). All told, Diohep estimates, the cost of development will reach nearly \$2 billion.

A charter amendment, Proposition D of 2008, streamlined the planning process and opened up new avenues for financing. It allowed the city to provide the Port with funding counted against estimated future hotel and payroll taxes. It also simplified leasing, eliminating requirements that the Board of Supervisors approve leases of more than 10 years or \$1 million. Federal grants, local taxes and private equity also will contribute to the project.

Once the busiest site of blacksmithing and shipbuilding in the city, Pier 70 gradually fell into disuse. Starting around the 1850s, California got its boats and blasting powder for the Gold Rush there. It was also the birthplace of a gemworks that came to be known as PG&E, and the source of steel plates for the Golden Gate Bridge.

As it became a West Coast hub for shipbuilding in the 20th century, Pier 70 was the site of major labor struggles during both world wars. In 1961, a strike halted construction for over a month. Workers won the right to organize, and by 1963 the ship was producing ships at a rate exceeding one per day.

As the shipbuilding industry slowed, activity on the pier died down. The city acquired the property in the early 1950s for \$1. Since then, activity has been limited mostly to dry-dock repairs, storage of towed cars and scrap metal collection. The pier hibernated for three decades as city planners mulled its future.

In August, the city invited developers to imagine a new Pier 70. Guidelines included setting aside 11 acres for parks, applying to the National Register of Historic Places, maintaining the largest ship drydock on the West Coast, limiting parking spaces to capitalize on the nearby T-Third Street light rail line and devoting 8 million square feet to new office and commercial space.

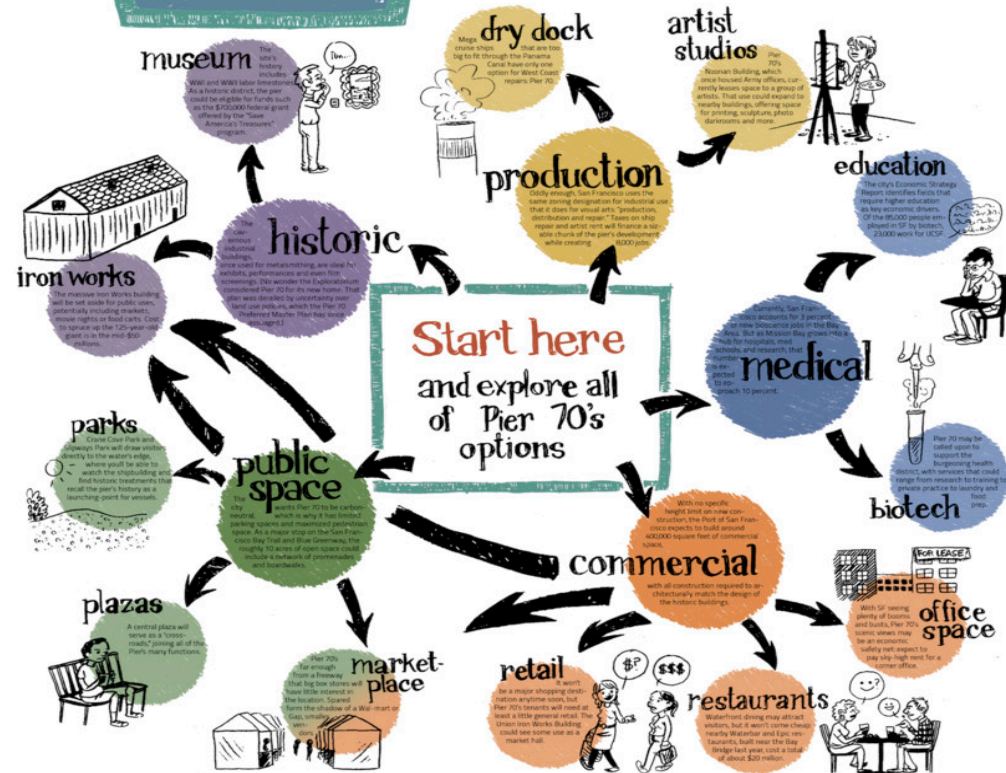
By early spring, the city will select developers. And because this is San Francisco, the public will have plenty of say over the final designs.

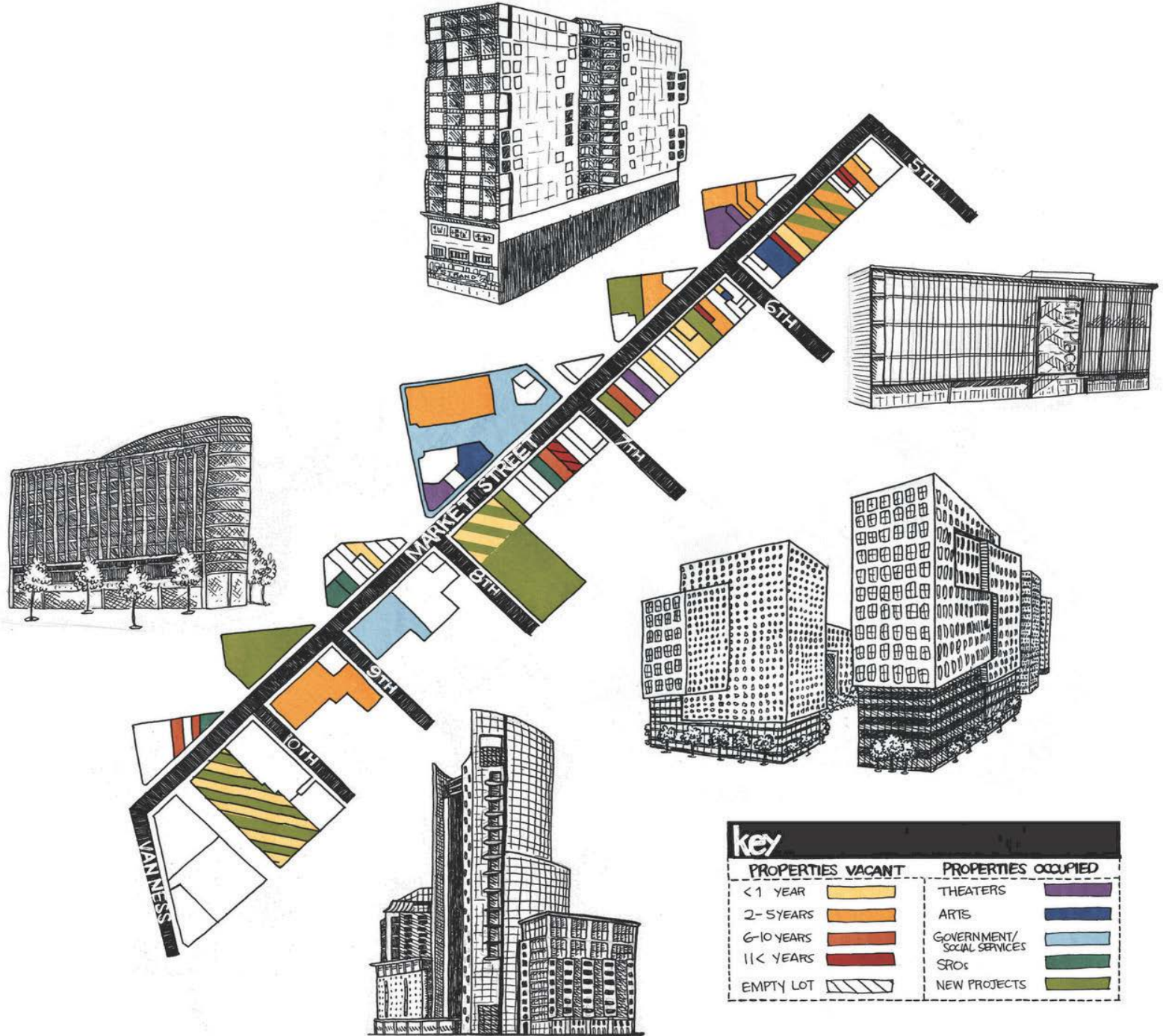
According to Diohep, community groups have responded enthusiastically to the Port's development push. "This is a place in San Francisco that the neighborhood and community backs us on change," she said.

Got a great concept for a park? In the market for office space? Eager to set up an artist's market stall? Start brainstorming your ideas now, and get ready to share them with the Port of San Francisco during public comment in 2011.

Connect with the Port on:

Facebook: <http://sfpr.es/SF-Pier70>  
Twitter: <http://twitter.com/sfport> to stay in the loop.

























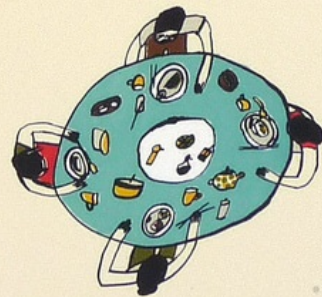
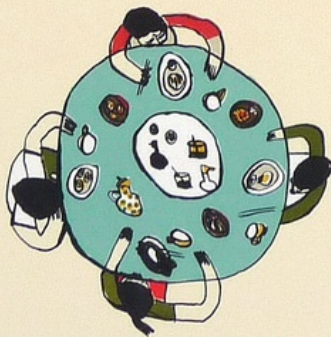
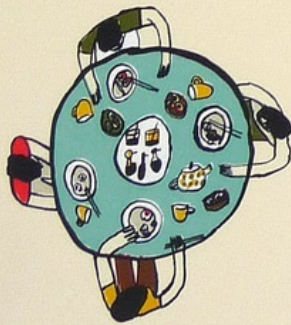




















FLYING  
AIR PLANTS

FEELINGS  
GRASS

SPACE  
FINGERS

ANTENNA  
COIN  
FOILAGE

ELECTRIC  
FERN

DROOPY  
FLOWER  
VINE

NEON  
KYOTO  
CACTI

SPACE BALL  
E PLUTOS PINE

BABY  
MASHER  
MOSS

HIGHWAY  
ANTMOSS  
FROM  
SATURN

UGLY  
SPACE  
ORBIT  
BASKET