

at&t

NORTH BEACH CNU5265 / CCL05265

LTE#: CCL05265
UMTS#: CNU5265
GSM#: SF0170
FA LOCATION#: 10100749
USID#: 47166
RFDS VER#: 10.04.00_11-12-2013

**NORTH
BEACH**

CNU5265 / CCL05265
766 VALLEJO ST
SAN FRANCISCO, CA 94133

ISSUE STATUS

Δ	DATE	DESCRIPTION	BY
	12/02/13	ZD 90%	J.K.
	12/06/13	ZD 100%	J.S.
	04/07/14	CLIENT REV	J.S.
-	-	-	-
-	-	-	-
-	-	-	-

DRAWN BY: J. KIBLER
CHECKED BY: J. GRAY
APPROVED BY: -
DATE: 04/07/14

Streamline Engineering and Design, Inc.
3288 Penryn Rd, Suite 200 Loomis, CA 95650
Contact: Kevin Sorensen Phone: 916-660-1950
E-Mail: kevin@streamlineeng.com Fax: 916-660-1941
THESE PLANS AND SPECIFICATIONS ARE INSTRUMENTS OF SERVICE AND SHALL REMAIN THE PROPERTY OF STREAMLINE ENGINEERING AND DESIGN, INC. WHETHER THE PROJECTS FOR WHICH THEY ARE MADE ARE EXECUTED OR NOT. THESE PLANS AND SPECIFICATIONS ARE NOT TO BE REPRODUCED, COPIED, OR TRANSMITTED IN ANY FORM OR BY ANY MEANS, WITHOUT THE WRITTEN CONSENT OF THE ENGINEER. COPYRIGHT © 2008, STREAMLINE ENGINEERING AND DESIGN, INC. ALL RIGHTS RESERVED.

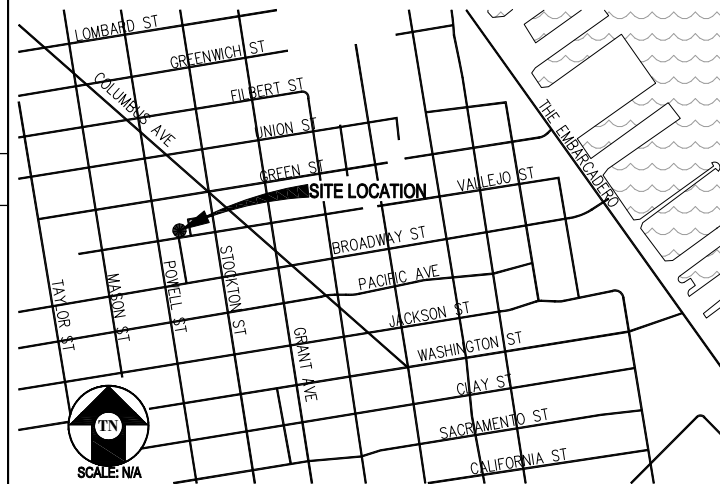
PROJECT DESCRIPTION

A MODIFICATION TO AN (E) UNMANNED TELECOMMUNICATIONS FACILITY CONSISTING OF REMOVING (1) (E) RBS 2106 CABINET & REPLACING IT W/ (2) (P) PURCELL CABINETS STACKED. REMOVING (9) (E) AT&T ANTENNAS & REPLACING THEM W/ (9) (P) AT&T ANTENNAS IN (P) LOCATIONS. ALSO ADDING (15) (P) RRUS-11 UNITS & (3) (P) A2 MODULES.

PROJECT INFORMATION

SITE NAME:	NORTH BEACH	SITE #:	CNU5265 / CCL05265
COUNTY:	SAN FRANCISCO	JURISDICTION:	CITY OF SAN FRANCISCO
APN:	0130-043	POWER:	PG&E
SITE ADDRESS:	766 VALLEJO ST SAN FRANCISCO, CA 94133	TELEPHONE:	AT&T
CURRENT ZONING:	NO BEACH (NORTH BEACH NEIGHBORHOOD COMMERCIAL)		
CONSTRUCTION TYPE:	V-B		
OCCUPANCY TYPE:	U, (UNMANNED COMMUNICATIONS FACILITY)		
PROPERTY OWNER:	SFMTA ATTN: ROB NOILES ONE SOUTH VAN NESS AVE, 3RD FLR SAN FRANCISCO, CA 94103		
APPLICANT:	AT&T 430 BUSH ST, 5TH FLOOR SAN FRANCISCO, CA 94108		
LEASING CONTACT:	ATTN: CAROLINA ROBERTS (925) 286-1076		
ZONING CONTACT:	ATTN: ERIC LENTZ (805) 895-4394		
CONSTRUCTION CONTACT:	ATTN: NOEL MOULIC (925) 961-7359		
LATITUDE:	N 37° 47' 54.81" NAD 83		
LONGITUDE:	W 122° 24' 36.17" NAD 83		
AMSL:	±106'		

VICINITY MAP



DRIVING DIRECTIONS

FROM: 430 BUSH ST, 5TH FLOOR, SAN FRANCISCO, CA 94108
TO: 766 VALLEJO ST, SAN FRANCISCO, CA 94133

1. HEAD EAST ON BUSH ST TOWARD CLAUDE LN 210 FT
2. TAKE THE 1ST LEFT ONTO KEARNY ST 0.4 MI
3. SLIGHT LEFT ONTO COLUMBUS AVE 0.2 MI
4. TURN LEFT ONTO VALLEJO ST 0.1 MI

END AT: 766 VALLEJO ST, SAN FRANCISCO, CA 94133
ESTIMATED TIME: 4 MINUTES ESTIMATED DISTANCE: 0.8 MILES

CODE COMPLIANCE

ALL WORK & MATERIALS SHALL BE PERFORMED & INSTALLED IN ACCORDANCE WITH THE CURRENT EDITIONS OF THE FOLLOWING CODES AS ADOPTED BY THE LOCAL GOVERNING AUTHORITIES. NOTHING IN THESE PLANS IS TO BE CONSTRUED TO PERMIT WORK NOT CONFORMING TO THESE CODES:

- 2013 CALIFORNIA ADMINISTRATIVE CODE, PART 1, TITLE 24 C.C.R.
 - 2013 CALIFORNIA BUILDING CODE (CBC), PART 2, TITLE 24 C.C.R. (2012 INTERNATIONAL BUILDING CODE VOLUMES 1-2 AND 2013 CALIFORNIA AMENDMENTS)
 - 2013 CALIFORNIA ELECTRICAL CODE (CEC), PART 3, TITLE 24 C.C.R. (2011 NATIONAL ELECTRICAL CODE AND 2013 CALIFORNIA AMENDMENTS)
 - 2013 CALIFORNIA MECHANICAL CODE (CMC) PART 4, TITLE 24 C.C.R. (2012 UNIFORM MECHANICAL CODE AND 2013 CALIFORNIA AMENDMENTS)
 - 2013 CALIFORNIA PLUMBING CODE (CPC), PART 5, TITLE 24 C.C.R. (2012 UNIFORM PLUMBING CODE AND 2013 CALIFORNIA AMENDMENTS)
 - 2010 CALIFORNIA ENERGY CODE (CEC), PART 6, TITLE 24 C.C.R.
 - 2013 CITY OF SAN FRANCISCO FIRE CODE (2012 INTERNATIONAL FIRE CODE AND 2013 CALIFORNIA AMENDMENTS)
 - 2013 CALIFORNIA GREEN BUILDING STANDARDS CODE, PART 11, TITLE 24 C.C.R.
 - 2013 CALIFORNIA REFERENCED STANDARDS, PART 12, TITLE 24 C.C.R.
- ANSI/EIA-TIA-222-G

ALONG WITH ANY OTHER APPLICABLE LOCAL & STATE LAWS AND REGULATIONS

DISABLED ACCESS REQUIREMENTS

THIS FACILITY IS UNMANNED & NOT FOR HUMAN HABITATION. DISABLED ACCESS & REQUIREMENTS ARE NOT REQUIRED IN ACCORDANCE WITH CALIFORNIA STATE BUILDING CODE, TITLE 24 PART 2, SECTION 11B-203.4

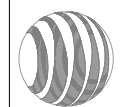
SHEET INDEX

SHEET	DESCRIPTION	REV
T-1	TITLE	-
A-1	SITE PLAN	-
A-2	(E) & (P) EQUIPMENT PLANS	-
A-3	(E) ANTENNA PLANS	-
A-4	(P) SECTORS A & B ANTENNA PLAN & DETAIL	-
A-5	(P) SECTOR C ANTENNA PLAN & DETAILS	-
A-6	SOUTH ELEVATION	-
A-7	NORTH ELEVATION	-
A-8	DETAILS	-

APPROVAL

RF
LEASING
ZONING
CONSTRUCTION
AT&T

at&t



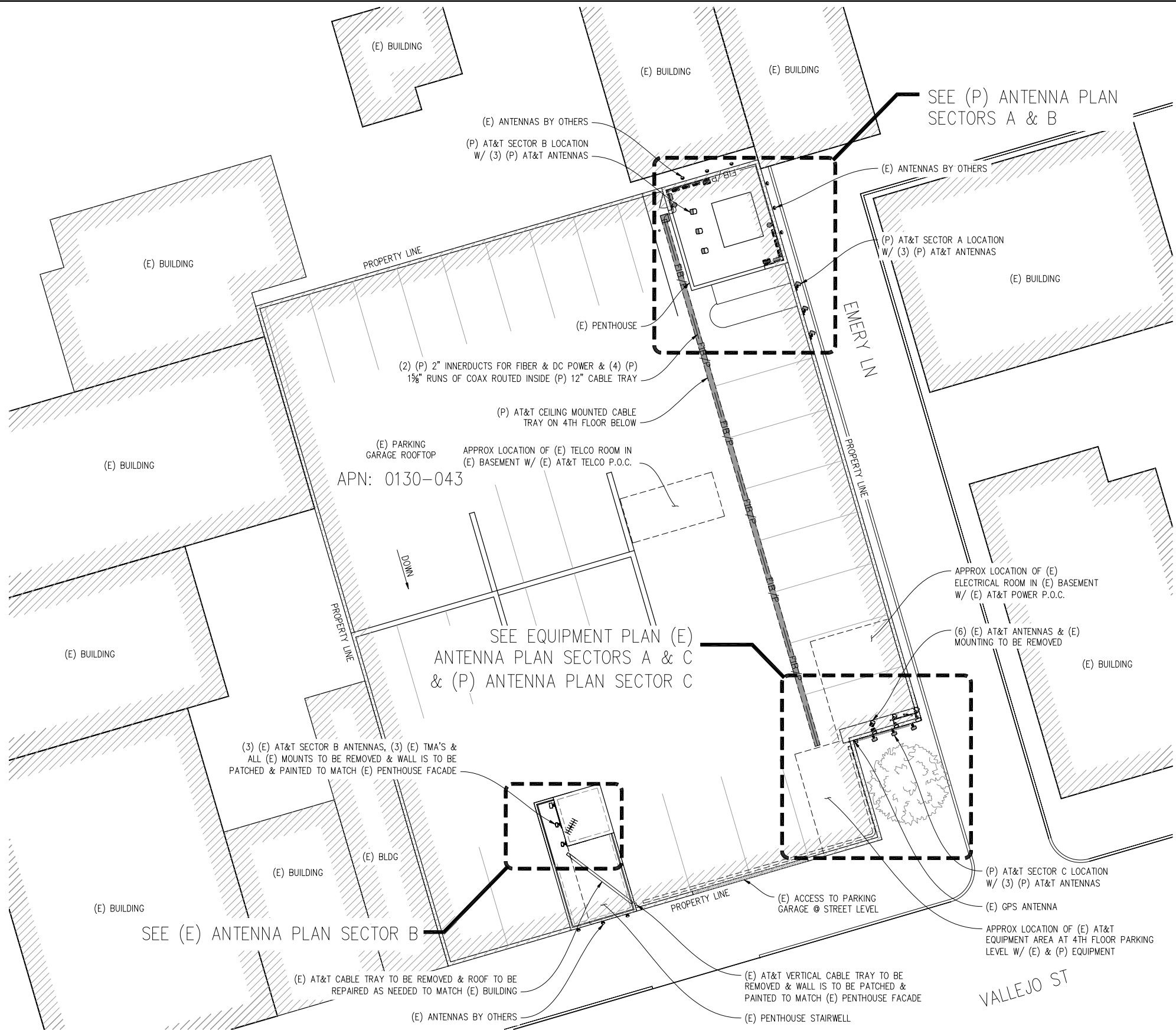
430 BUSH ST, 5TH FLOOR
SAN FRANCISCO, CA 94108

SHEET TITLE:

TITLE

SHEET NUMBER:

T-1



APN: 0130-043



SITE PLAN

1"=10'-0"
 NOTE: ALL (P) AT&T ANCILLARY EQUIPMENT VISIBLE FROM ANY ADJACENT VIEW OF PROPERTY SHALL BE PAINTED TO MATCH (E) BUILDING FACADE



NORTH BEACH

CNU5265 / CCL05265
 766 VALLEJO ST
 SAN FRANCISCO, CA 94133

ISSUE STATUS

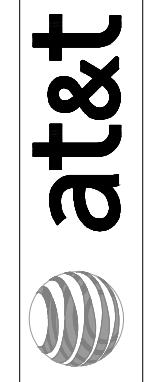
Δ	DATE	DESCRIPTION	BY
	12/02/13	ZD 90%	J.K.
	12/06/13	ZD 100%	J.S.
	04/07/14	CLIENT REV	J.S.
	-	-	-
	-	-	-
	-	-	-

DRAWN BY: J. KIBLER
 CHECKED BY: J. GRAY
 APPROVED BY: -
 DATE: 04/07/14

Streamline Engineering
 and Design, Inc.

3268 Penryn Rd, Suite 200 Loomis, CA 95650
 Contact: Kevin Sorensen Phone: 916-660-1930
 E-Mail: kevin@streamlineeng.com Fax: 916-660-1941

THESE PLANS AND SPECIFICATIONS ARE INSTRUMENTS OF SERVICE AND SHALL REMAIN THE PROPERTY OF STREAMLINE ENGINEERING AND DESIGN, INC. WHETHER THE PRODUCTS FOR WHICH THEY WERE MADE ARE EXECUTED OR NOT. THESE INSTRUMENTS OF SERVICE SHALL NOT BE REPRODUCED, COPIED, OR TRANSMITTED IN ANY FORM OR BY ANY MEANS, WITHOUT THE WRITTEN CONSENT OF THE ENGINEER. COPYRIGHT © 2008 BY STREAMLINE ENGINEERING AND DESIGN, INC. ALL RIGHTS RESERVED.



430 BUSH ST, 5TH FLOOR
 SAN FRANCISCO, CA 94108

SHEET TITLE:

SITE PLAN

SHEET NUMBER:

A-1

ISSUE STATUS

Δ	DATE	DESCRIPTION	BY
	12/02/13	ZD 90%	J.K.
	12/06/13	ZD 100%	J.S.
	04/07/14	CLIENT REV	J.S.
	-	-	-
	-	-	-

DRAWN BY: J. KIBLER

CHECKED BY: J. GRAY

APPROVED BY: -

DATE: 04/07/14

Streamline Engineering
and Design, Inc.

3268 Penryn Rd, Suite 200 Loomis, CA 95650
Contact: Kevin Sorensen Phone: 916-660-1930
E-Mail: kevin@streamlineeng.com Fax: 916-660-1941

THESE PLANS AND SPECIFICATIONS ARE INSTRUMENTS OF SERVICE AND SHALL REMAIN THE PROPERTY OF STREAMLINE ENGINEERING AND DESIGN, INC. WHETHER THE PROJECT FOR WHICH THEY ARE USED IS COMPLETED OR NOT. THESE PLANS AND SPECIFICATIONS ARE NOT TO BE REPRODUCED, COPIED, OR TRANSMITTED IN ANY FORM OR BY ANY MEANS, WITHOUT THE WRITTEN CONSENT OF THE ENGINEER. COPYRIGHT © 2008 BY STREAMLINE ENGINEERING AND DESIGN, INC. ALL RIGHTS RESERVED.



430 BUSH ST, 5TH FLOOR
SAN FRANCISCO, CA 94108

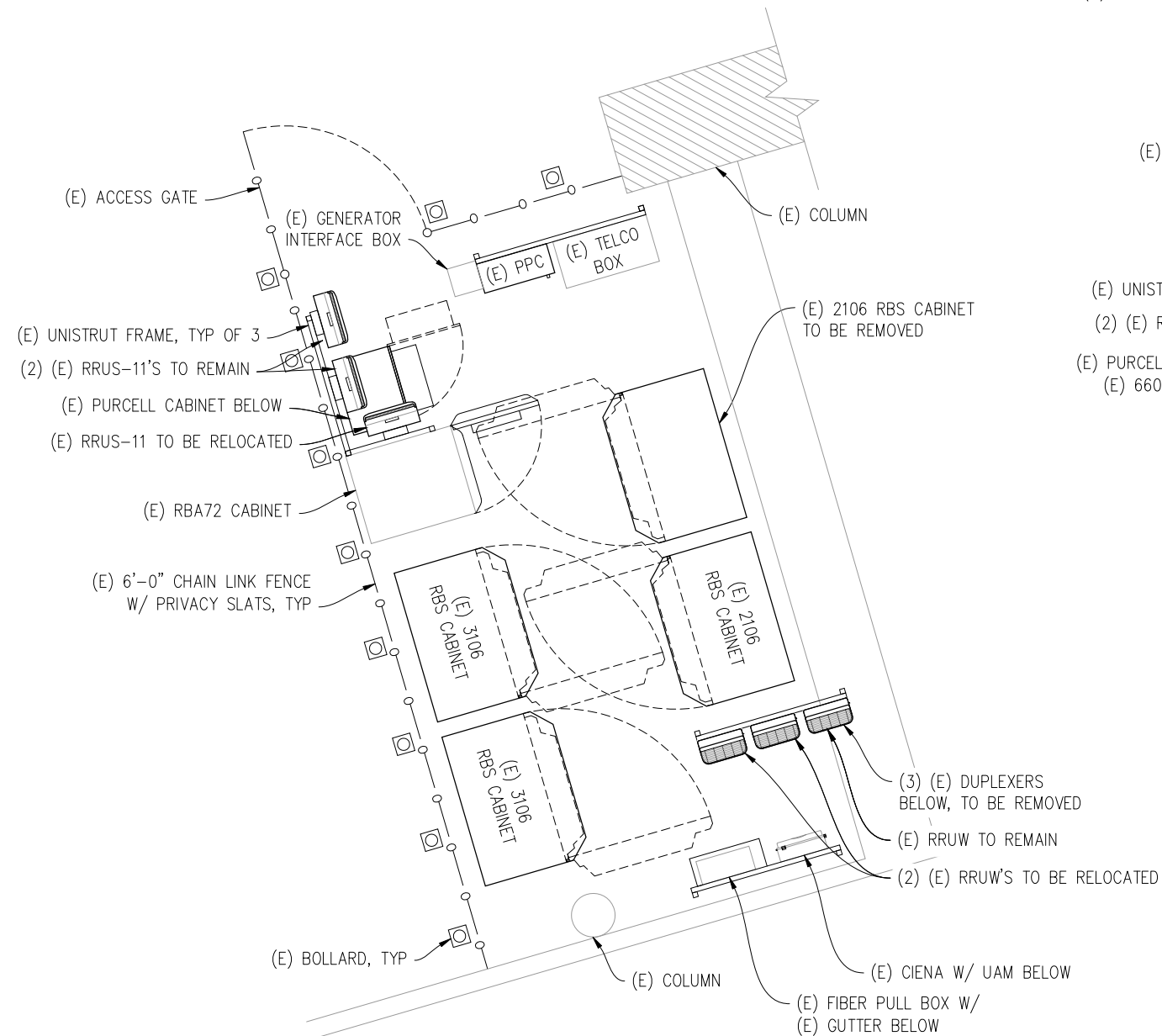
SHEET TITLE:

(E) & (P)
EQUIPMENT PLANS

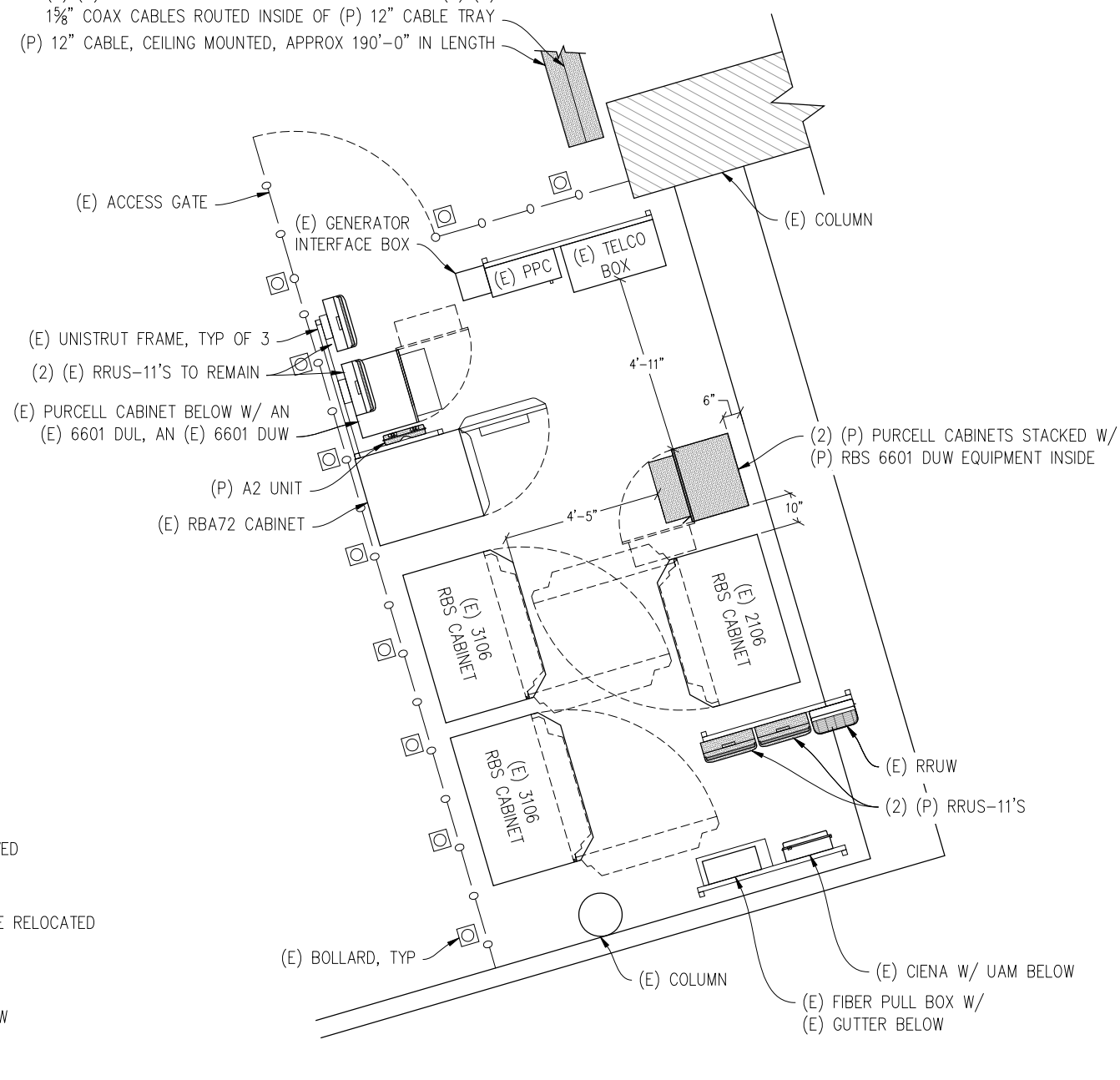
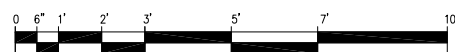
SHEET NUMBER:

A-2

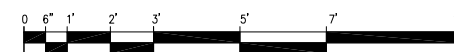
(2) (P) 2" INNERDUCTS FOR FIBER & DC POWER & (4) (P)
1 5/8" COAX CABLES ROUTED INSIDE OF (P) 12" CABLE TRAY
(P) 12" CABLE, CEILING MOUNTED, APPROX 190'-0" IN LENGTH



(E) EQUIPMENT PLAN
1/2" = 1'-0"



(P) EQUIPMENT PLAN
1/2" = 1'-0"



ISSUE STATUS

Δ	DATE	DESCRIPTION	BY
	12/02/13	ZD 90%	J.K.
	12/06/13	ZD 100%	J.S.
	04/07/14	CLIENT REV	J.S.
	-	-	-
	-	-	-

DRAWN BY: J. KIBLER

CHECKED BY: J. GRAY

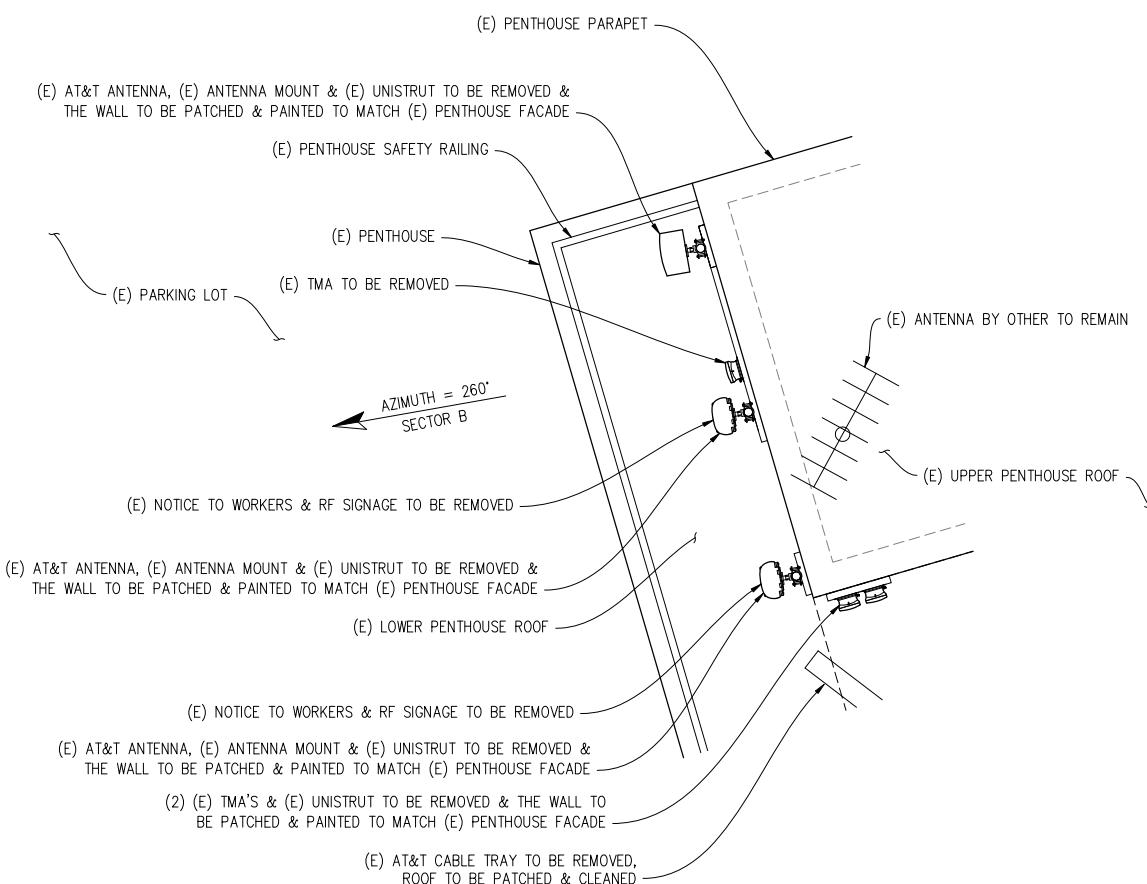
APPROVED BY: -

DATE: 04/07/14

Streamline Engineering
and Design, Inc.

3268 Penryn Rd, Suite 200 Loomis, CA 95650
Contact: Kevin Sorensen Phone: 916-660-1930
E-Mail: kevin@streamlineeng.com Fax: 916-660-1941

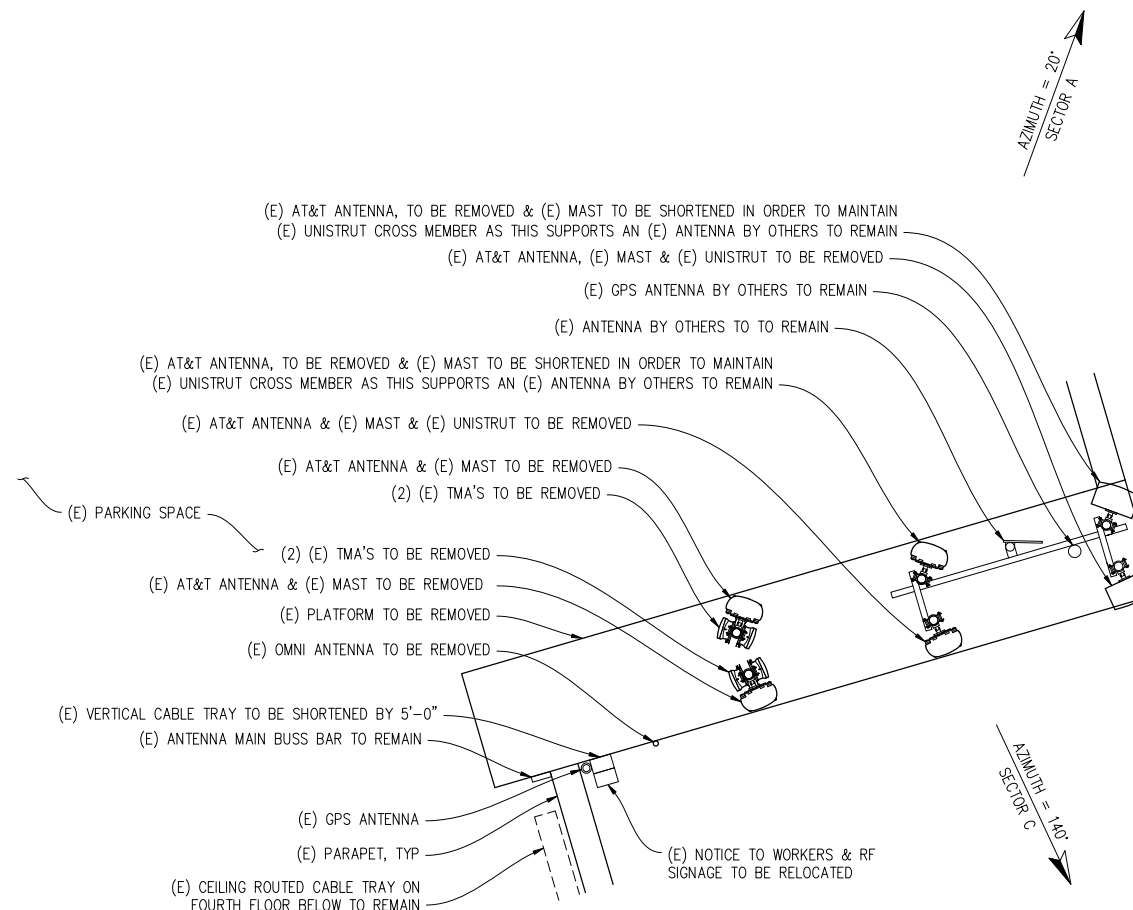
THESE PLANS AND SPECIFICATIONS ARE INSTRUMENTS OF SERVICE AND SHALL REMAIN THE PROPERTY OF STREAMLINE ENGINEERING AND DESIGN, INC. WHETHER THE PRODUCTS FOR WHICH THEY ARE DRAWN ARE EXECUTED OR NOT. THESE PLANS AND SPECIFICATIONS ARE NOT TO BE REPRODUCED OR TRANSMITTED IN ANY FORM OR BY ANY MEANS, ELECTRONIC OR MECHANICAL, INCLUDING PHOTOCOPYING, RECORDING, OR BY ANY INFORMATION STORAGE AND RETRIEVAL SYSTEM. WITHOUT THE WRITTEN CONSENT OF THE ENGINEER. COPYRIGHT © 2008 BY STREAMLINE ENGINEERING AND DESIGN, INC. ALL RIGHTS RESERVED.



(E) ANTENNA PLAN SECTORS B

1/2" = 1'-0"

NOTE: PATCH, PAINT & RESTORE BUILDING AFTER (E) AT&T EQUIPMENT IS REMOVED.

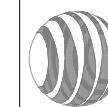


(E) ANTENNA PLAN SECTORS A & C

1/2" = 1'-0"

NOTE: PATCH, PAINT & RESTORE BUILDING AFTER (E) AT&T EQUIPMENT IS REMOVED.

at&t



430 BUSH ST., 5TH FLOOR
SAN FRANCISCO, CA 94108

SHEET TITLE:

EXISTING
ANTENNA PLANS

SHEET NUMBER:

A-3

NORTH BEACH

CNU5265 / CCL05265
766 VALLEJO ST
SAN FRANCISCO, CA 94133

ISSUE STATUS

Δ	DATE	DESCRIPTION	BY
	12/02/13	ZD 90%	J.K.
	12/06/13	ZD 100%	J.S.
	04/07/14	CLIENT REV	J.S.
	-	-	-
	-	-	-

DRAWN BY: J. KIBLER

CHECKED BY: J. GRAY

APPROVED BY: -

DATE: 04/07/14

Streamline Engineering
and Design, Inc.

3268 Penryn Rd, Suite 200 Loomis, CA 95650
Contact: Kevin Sorensen Phone: 916-660-1930
E-Mail: kevin@streamlineeng.com Fax: 916-660-1941

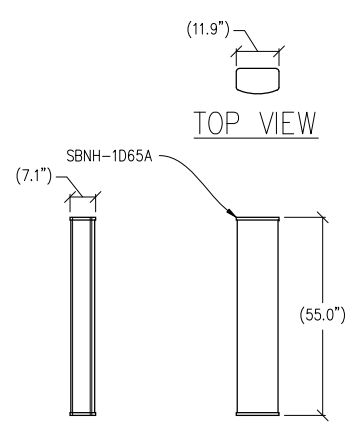
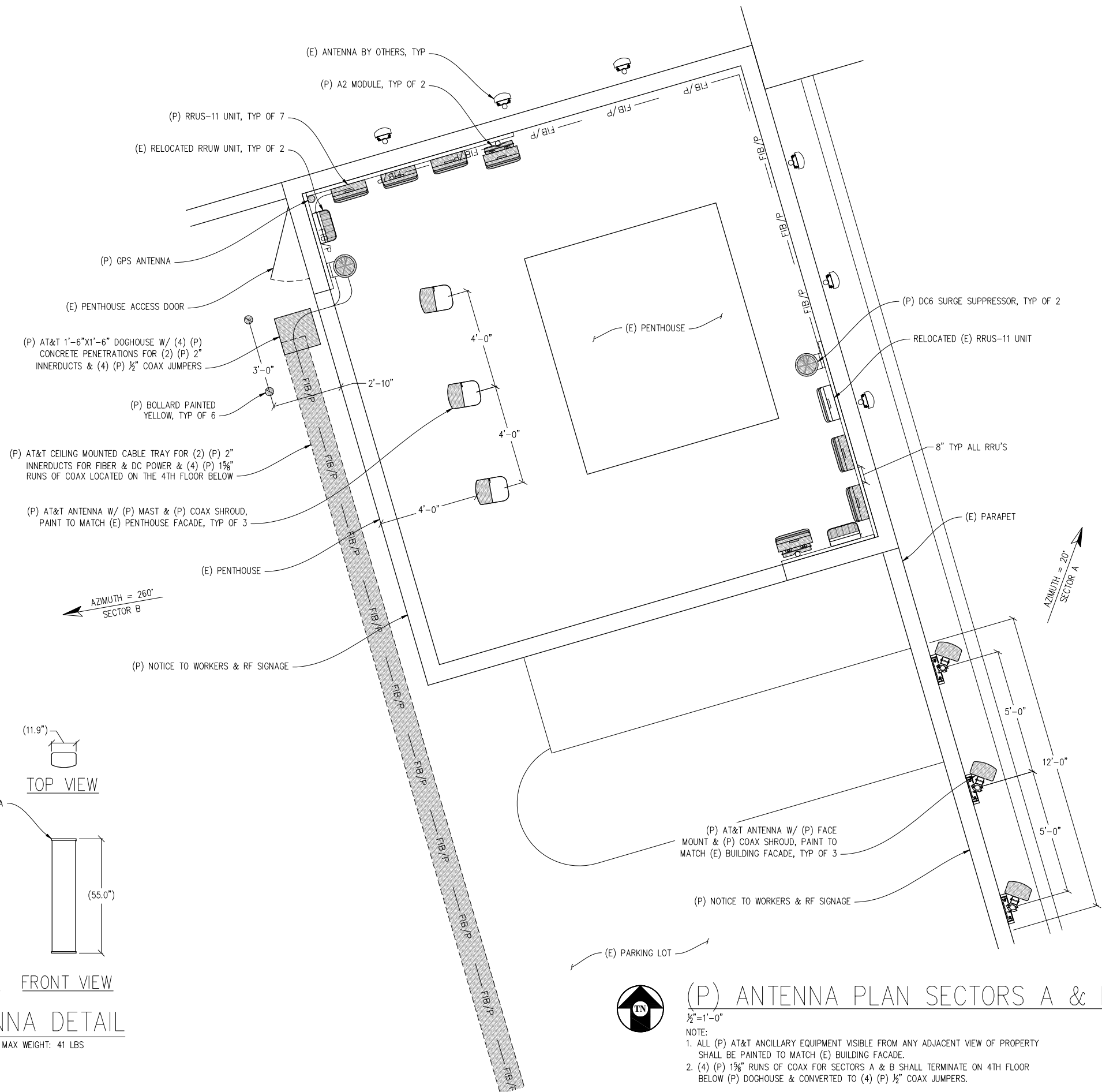
THESE PLANS AND SPECIFICATIONS ARE INSTRUMENTS OF SERVICE AND SHALL REMAIN THE PROPERTY OF STREAMLINE ENGINEERING AND DESIGN, INC. WHETHER THE PRODUCTS FOR WHICH THEY ARE MADE ARE EXECUTED OR NOT. THESE INSTRUMENTS OF SERVICE ARE NOT TO BE REPRODUCED, COPIED, OR TRANSMITTED IN ANY FORM OR BY ANY MEANS, WITHOUT THE WRITTEN CONSENT OF THE ENGINEER. COPYRIGHT © 2008 BY STREAMLINE ENGINEERING AND DESIGN, INC. ALL RIGHTS RESERVED.

at&t

430 BUSH ST, 5TH FLOOR
SAN FRANCISCO, CA 94108

SHEET TITLE:
(P) SECTORS A & B
ANTENNA PLAN & DETAIL

SHEET NUMBER:
A-4



1 ANTENNA DETAIL
1/2"=1'-0" MAX WEIGHT: 41 LBS



(P) ANTENNA PLAN SECTORS A & B

- 1/2"=1'-0"
- NOTE:
- ALL (P) AT&T ANCILLARY EQUIPMENT VISIBLE FROM ANY ADJACENT VIEW OF PROPERTY SHALL BE PAINTED TO MATCH (E) BUILDING FACADE.
 - (4) (P) 1 1/8" RUNS OF COAX FOR SECTORS A & B SHALL TERMINATE ON 4TH FLOOR BELOW (P) DOGHOUSE & CONVERTED TO (4) (P) 1/2" COAX JUMPERS.

ISSUE STATUS

Δ	DATE	DESCRIPTION	BY
	12/02/13	ZD 90%	J.K.
	12/06/13	ZD 100%	J.S.
	04/07/14	CLIENT REV	J.S.
	-	-	-
	-	-	-
	-	-	-

DRAWN BY: J. KIBLER

CHECKED BY: J. GRAY

APPROVED BY: -

DATE: 04/07/14

Streamline Engineering
and Design, Inc.

3268 Penryn Rd, Suite 200 Loomis, CA 95650
Contact: Kevin Sorensen Phone: 916-660-1930
E-Mail: kevin@streamlineeng.com Fax: 916-660-1941

THESE PLANS AND SPECIFICATIONS ARE INSTRUMENTS OF SERVICE AND SHALL REMAIN THE PROPERTY OF STREAMLINE ENGINEERING AND DESIGN, INC. WHETHER THE PROJECTS FOR WHICH THEY ARE MADE ARE EXECUTED OR NOT. THESE PLANS AND SPECIFICATIONS ARE NOT TO BE REPRODUCED OR TRANSMITTED IN ANY FORM OR BY ANY MEANS, ELECTRONIC OR MECHANICAL, WITHOUT PERMISSION IN WRITING FROM STREAMLINE ENGINEERING AND DESIGN, INC. ALL RIGHTS RESERVED. COPYRIGHT © 2008 BY STREAMLINE ENGINEERING AND DESIGN, INC.



at&t

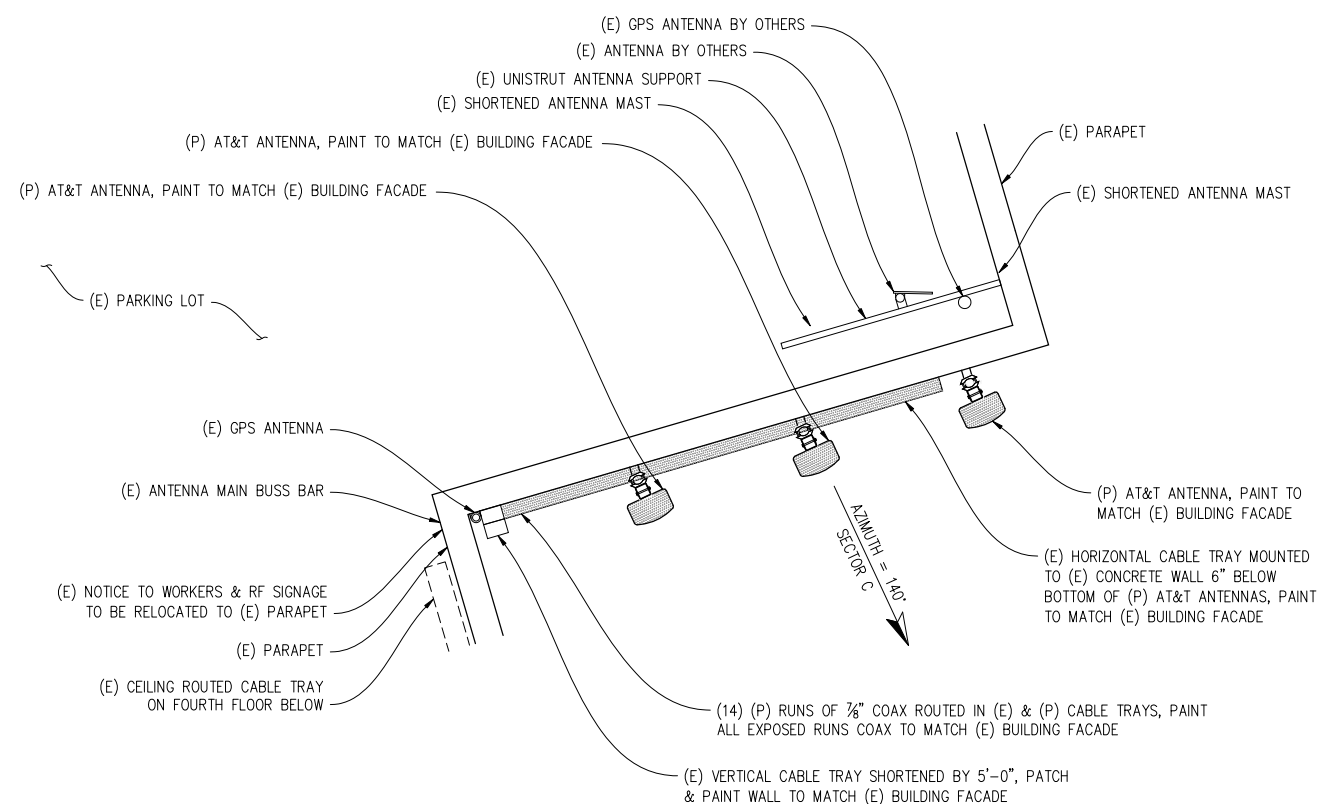
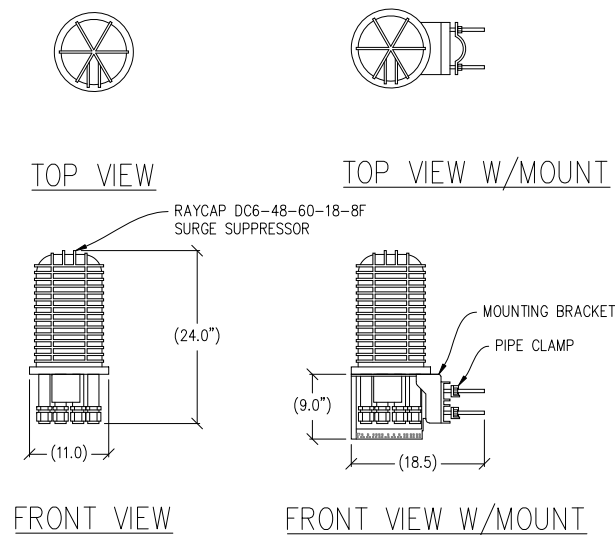
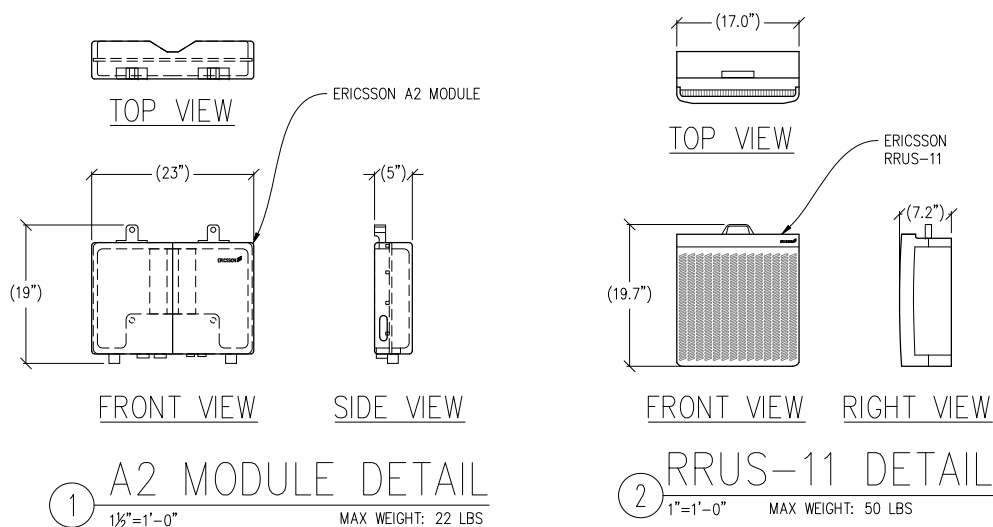
430 BUSH ST, 5TH FLOOR
SAN FRANCISCO, CA 94108

SHEET TITLE:
(P) SECTOR C
ANTENNA PLAN & DETAILS

SHEET NUMBER:
A-5

ANTENNA & CABLE SCHEDULE											
ANTENNA POSITION	ANTENNA MODEL	RAD CENTER	AZIMUTH	MDT	EDT	RET	CABLING				
							TMA OR DIPLEXER	NO. OF COAX CABLES	COAX DIA.	FIBER/COAX LENGTH	
ALPHA SECTOR	A1	SBNH-1D65A	50'-8"	20°	0'	6'/4"	YES	N/A	FIBER	N/A	290'
	A2	SBNH-1D65A	50'-8"	20°	0'	6'/4"	YES	N/A	1 FIBER/2 COAX	1 1/8"	290'
	A3	SBNH-1D65A	50'-8"	20°	0'	6'/4"	YES	N/A	FIBER	N/A	290'
BETA SECTOR	B1	SBNH-1D65A	63'-0"	260°	0'	6'/4"	YES	N/A	FIBER	N/A	290'
	B2	SBNH-1D65A	63'-0"	260°	0'	6'/4"	YES	N/A	1 FIBER/2 COAX	1 1/8"	290'
	B3	SBNH-1D65A	63'-0"	260°	0'	6'/4"	YES	N/A	FIBER	N/A	290'
GAMMA SECTOR	C1	SBNH-1D65A	57'-4"	140°	0'	6'/4"	YES	N/A	6	7/8"	60'
	C2	SBNH-1D65A	57'-4"	140°	0'	6'/4"	YES	N/A	4	7/8"	60'
	C3	SBNH-1D65A	57'-4"	140°	0'	6'/4"	YES	N/A	4	7/8"	60'

NOTE: CONTRACTOR TO VERIFY LATEST RF DESIGN



(P) ANTENNA PLAN SECTOR C
1/2" = 1'-0"

NOTE: ALL (P) AT&T ANCILLARY EQUIPMENT VISIBLE FROM ANY ADJACENT VIEW OF PROPERTY SHALL BE PAINTED TO MATCH (E) BUILDING FACADE

NORTH BEACH

CNU5265 / CCL05265
766 VALLEJO ST
SAN FRANCISCO, CA 94133

ISSUE STATUS

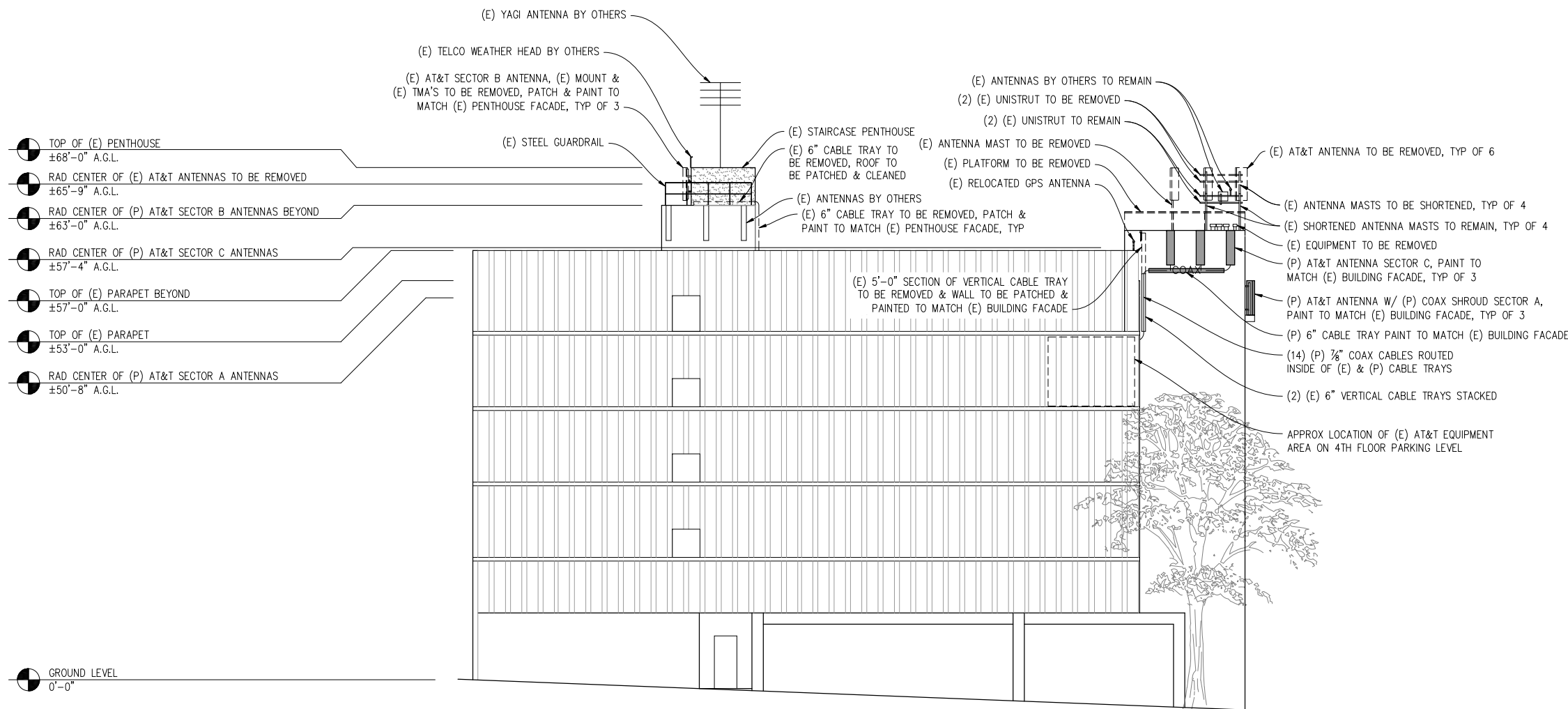
Δ	DATE	DESCRIPTION	BY
	12/02/13	ZD 90%	J.K.
	12/06/13	ZD 100%	J.S.
	04/07/14	CLIENT REV	J.S.
	-	-	-
	-	-	-

DRAWN BY: J. KIBLER

CHECKED BY: J. GRAY

APPROVED BY: -

DATE: 04/07/14



SOUTH ELEVATION

1/8"=1'-0"

NOTE:

1. ALL (P) AT&T ANCILLARY EQUIPMENT VISIBLE FROM ANY ADJACENT VIEW OF PROPERTY SHALL BE PAINTED TO MATCH (E) BUILDING FACADE.
2. PATCH, REPAIR & PAINT WHERE (E) AT&T ANCILLARY EQUIPMENT IS REMOVED.

Streamline Engineering
and Design, Inc.

3288 Penryn Rd, Suite 200 Loomis, CA 95650
Contact: Kevin Sorensen Phone: 916-660-1930
E-Mail: kevin@streamlineeng.com Fax: 916-660-1941

THESE PLANS AND SPECIFICATIONS, AS INSTRUMENTS OF SERVICE, ARE AND SHALL REMAIN THE PROPERTY OF STREAMLINE ENGINEERING AND DESIGN, INC. WHETHER THE PROJECTS FOR WHICH THEY ARE MADE ARE EXECUTED OR NOT. THESE PLANS AND SPECIFICATIONS ARE NOT TO BE REPRODUCED, COPIED, REPRODUCED, OR TRANSMITTED IN ANY FORM OR BY ANY MEANS, WITHOUT THE WRITTEN CONSENT OF THE ENGINEER. COPYRIGHT © 2008 BY STREAMLINE ENGINEERING AND DESIGN, INC. ALL RIGHTS RESERVED.

at&t

430 BUSH ST., 5TH FLOOR
SAN FRANCISCO, CA 94108

SHEET TITLE:
SOUTH ELEVATION

SHEET NUMBER:
A-6

NORTH BEACH

CNU5265 / CCL05265
766 VALLEJO ST
SAN FRANCISCO, CA 94133

ISSUE STATUS

Δ	DATE	DESCRIPTION	BY
	12/02/13	ZD 90%	J.K.
	12/06/13	ZD 100%	J.S.
	04/07/14	CLIENT REV	J.S.
	-	-	-
	-	-	-

DRAWN BY: J. KIBLER

CHECKED BY: J. GRAY

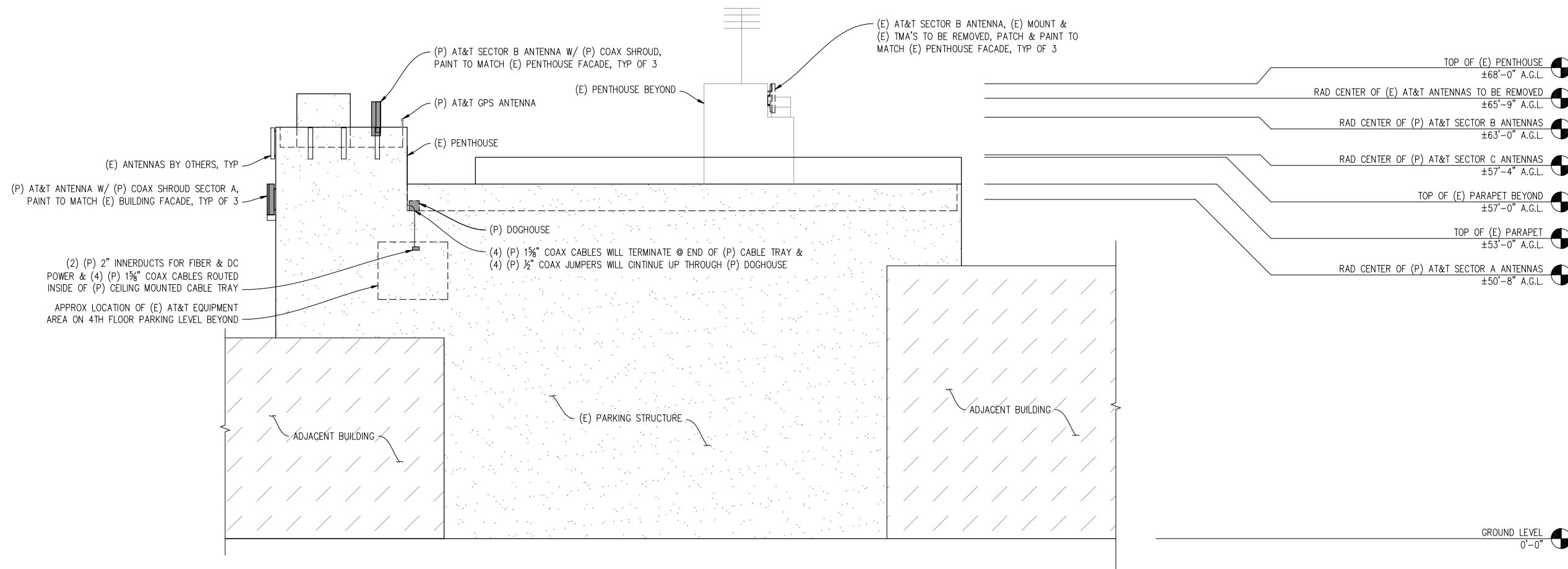
APPROVED BY: -

DATE: 04/07/14

Streamline Engineering
and Design, Inc.

3268 Penryn Rd, Suite 200 Loomis, CA 95650
Contact: Kevin Sorensen Phone: 916-660-1930
E-Mail: kevin@streamlineeng.com Fax: 916-660-1941

THESE PLANS AND SPECIFICATIONS, AS INSTRUMENTS OF SERVICE, ARE AND SHALL REMAIN THE PROPERTY OF STREAMLINE ENGINEERING AND DESIGN, INC. WHETHER THE PRODUCTS FOR WHICH THEY WERE PREPARED ARE FACULTY OR NOT. THESE PLANS AND SPECIFICATIONS ARE NOT TO BE REPRODUCED, COPIED, REPRODUCED, OR TRANSMITTED IN ANY FORM OR BY ANY MEANS, WITHOUT THE WRITTEN CONSENT OF THE ENGINEER. COPYRIGHT © 2008, BY STREAMLINE ENGINEERING AND DESIGN, INC. ALL RIGHTS RESERVED.



NORTH ELEVATION

1/8" = 1'-0"

NOTE:

1. ALL (P) AT&T ANCILLARY EQUIPMENT VISIBLE FROM ANY ADJACENT VIEW OF PROPERTY SHALL BE PAINTED TO MATCH (E) BUILDING FACADE.
2. PATCH, REPAIR & PAINT WHERE (E) AT&T ANCILLARY EQUIPMENT IS REMOVED.



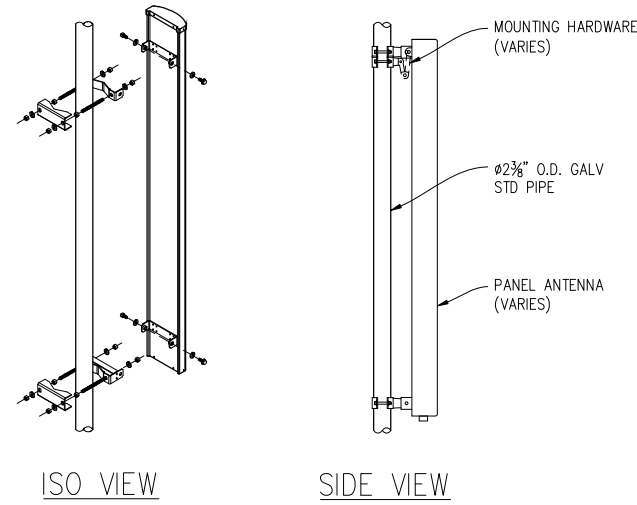
430 BUSH ST, 5TH FLOOR
SAN FRANCISCO, CA 94108

SHEET TITLE:

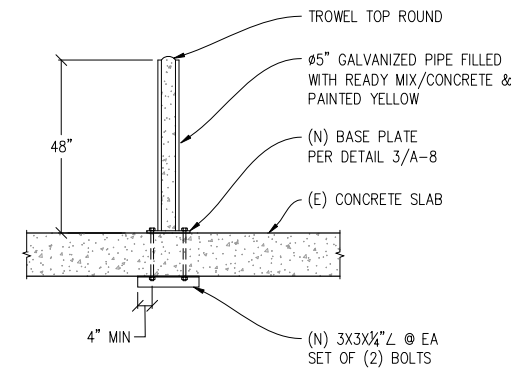
NORTH ELEVATION

SHEET NUMBER:

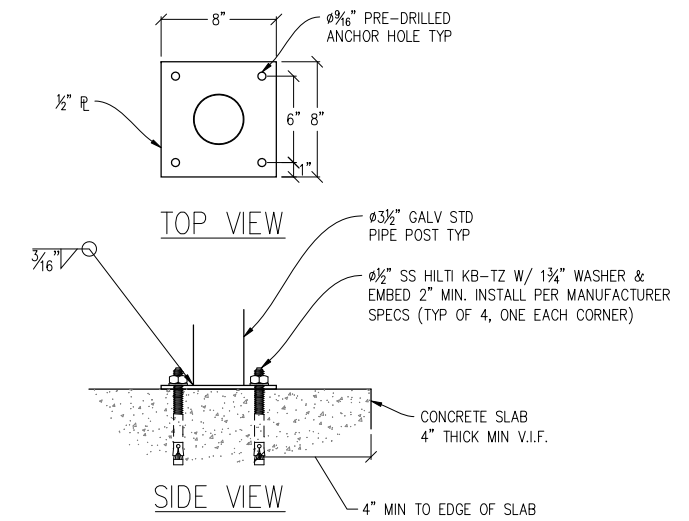
A-7



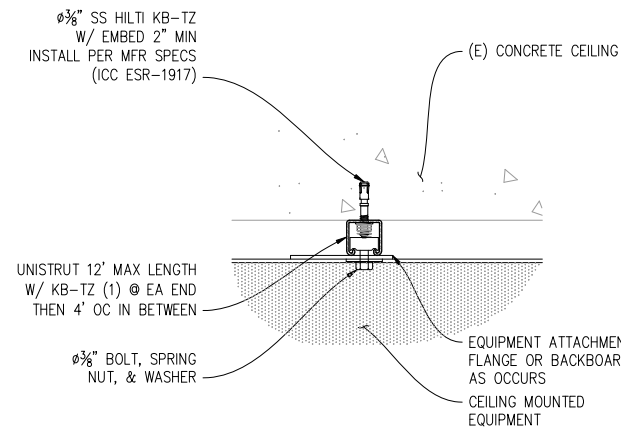
1 ANTENNA MOUNT DETAIL
1"=1'-0"



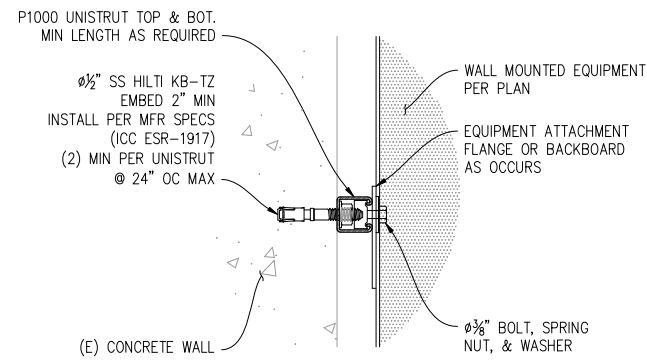
2 PERMANENT BOLLARD DETAIL
1/2"=1'



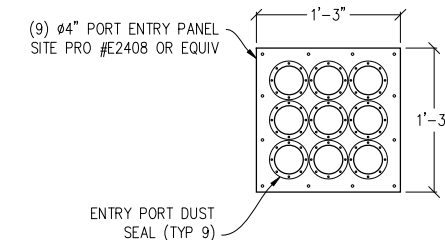
3 H-FRAME PLATE DETAIL
1"=6"



4 EQUIPMENT MOUNTING DETAIL
3"=1'-0"

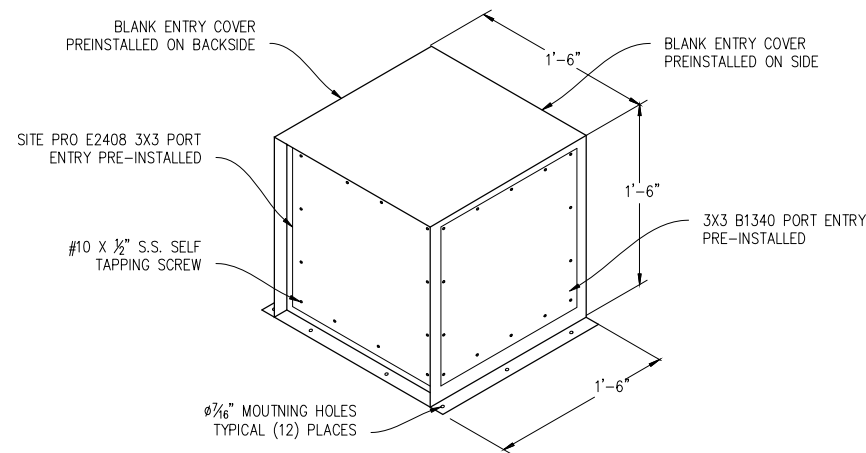


5 EQUIPMENT MOUNTING DETAIL
3"=1'-0"

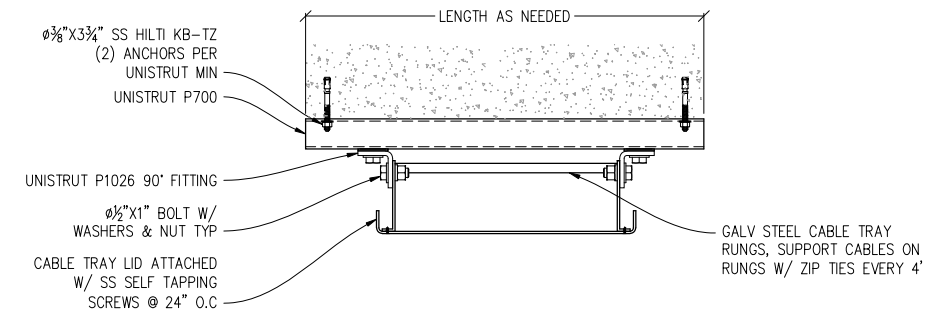


6 3X3 ENTRY PORT DETAIL
1"=1'-0"

NOTE: SEALING CAPS & MOUNTING HARDWARE PROVIDED BY MANUFACTURER



7 DOGHOUSE DETAIL
1/2"=1'-0"



8 CABLE TRAY MOUNTING DETAIL
1"=6"

NOTE: DETAILS ARE PRELIMINARY & SHOULD NOT BE USED FOR CONSTRUCTION

NORTH BEACH

CNU5265 / CCL05265
766 VALLEJO ST
SAN FRANCISCO, CA 94133

ISSUE STATUS

Δ	DATE	DESCRIPTION	BY
	12/02/13	ZD 90%	J.K.
	12/06/13	ZD 100%	J.S.
	04/07/14	CLIENT REV	J.S.
	-	-	-
	-	-	-

DRAWN BY: J. KIBLER

CHECKED BY: J. GRAY

APPROVED BY: -

DATE: 04/07/14

Streamline Engineering
and Design, Inc.

3268 Penryn Rd, Suite 200 Loomis, CA 95650
Contact: Kevin Sorensen Phone: 916-660-1930
E-Mail: kevin@streamlineeng.com Fax: 916-660-1941

THESE PLANS AND SPECIFICATIONS ARE INSTRUMENTS OF SERVICE AND SHALL REMAIN THE PROPERTY OF STREAMLINE ENGINEERING AND DESIGN, INC. WHETHER THE PRODUCTS FOR WHICH THEY ARE MADE ARE EXECUTED OR NOT. THESE PLANS AND SPECIFICATIONS ARE NOT TO BE REPRODUCED, COPIED, OR TRANSMITTED IN ANY FORM OR BY ANY MEANS, WITHOUT THE WRITTEN CONSENT OF THE ENGINEER. COPYRIGHT © 2008, STREAMLINE ENGINEERING AND DESIGN, INC. ALL RIGHTS RESERVED.

at&t



430 BUSH ST, 5TH FLOOR
SAN FRANCISCO, CA 94108

SHEET TITLE:

DETAILS

SHEET NUMBER:

A-8