



**ALAMEDA CREEK WATERSHED
PUBLIC ART SELECTION PANEL**

MEETING 2 SUMMARY

MEETING DATE:

July 8, 2014

VOTING SELECTION PANELISTS:

Pete Alexander, Community Representative
Regina Almaguer, Art Consultant
Jenny Gheith, Assistant Curator of Painting and Sculpture, SFMOMA
Dorka Keehn, Arts Commissioner
Walter Kitundu, Artist
Laura Page, Arts & Educational Initiatives, PUC
Jenny Rigby, Director, The Acorn Group

PROCESS

The following artist/artist teams presented an overview of their practice and proposals for both the entryway and landscape public art opportunities:

Mark Brest van Kempen
Jackie Brookner and Stacy Levy
Adam Kuby

Presentations were followed by discussion and voting.

VOTING CRITERIA

The panelists were asked to rank each of the artists and artwork proposals 1, 2, or 3 (1=highest rank) taking into consideration the following criteria:

- Aesthetic quality
- Appropriateness of the proposed artwork for the site and project goals
- Demonstrated feasibility of the preliminary proposal and the proposal budget
- Demonstrated maintainability and durability of the artwork's design, materials, fabrication and installation methods
- Result of reference checks

The entryway and landscape opportunities were ranked separately.

RESULTS OF VOTING TALLY

Entryway Opportunity

Mark Brest van Kempen	9
Adam Kuby	14
Jackie Brookner and Stacy Levy	19

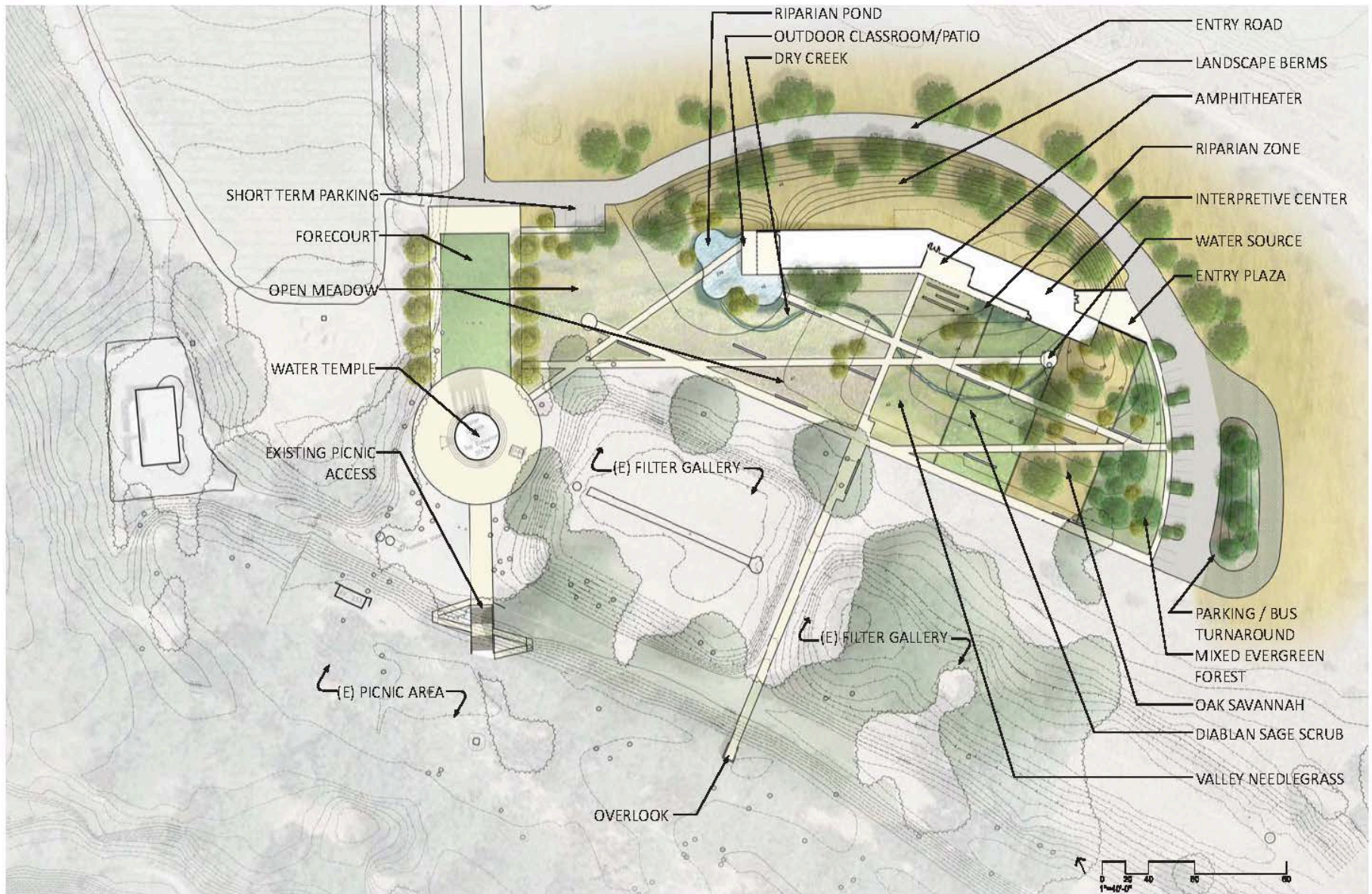
Landscape Opportunity

Mark Brest van Kempen	9
Adam Kuby	13
Jackie Brookner and Stacy Levy	20

ARTS COMMISSION APPROVAL

Motion: Motion to approve the selected finalist, Mark Brest van Kempen, as recommended by the Alameda Creek Watershed Center Public Art Selection Panel to further develop conceptual proposals for the Alameda Creek Watershed Center.

Motion: Motion to authorize the Director of Cultural Affairs to enter into contract with Mark Brest van Kempen, as recommended by the Alameda Creek Watershed Center Public Art Selection Panel, to further develop conceptual designs for the entry way and landscape in an amount not to exceed \$10,000.



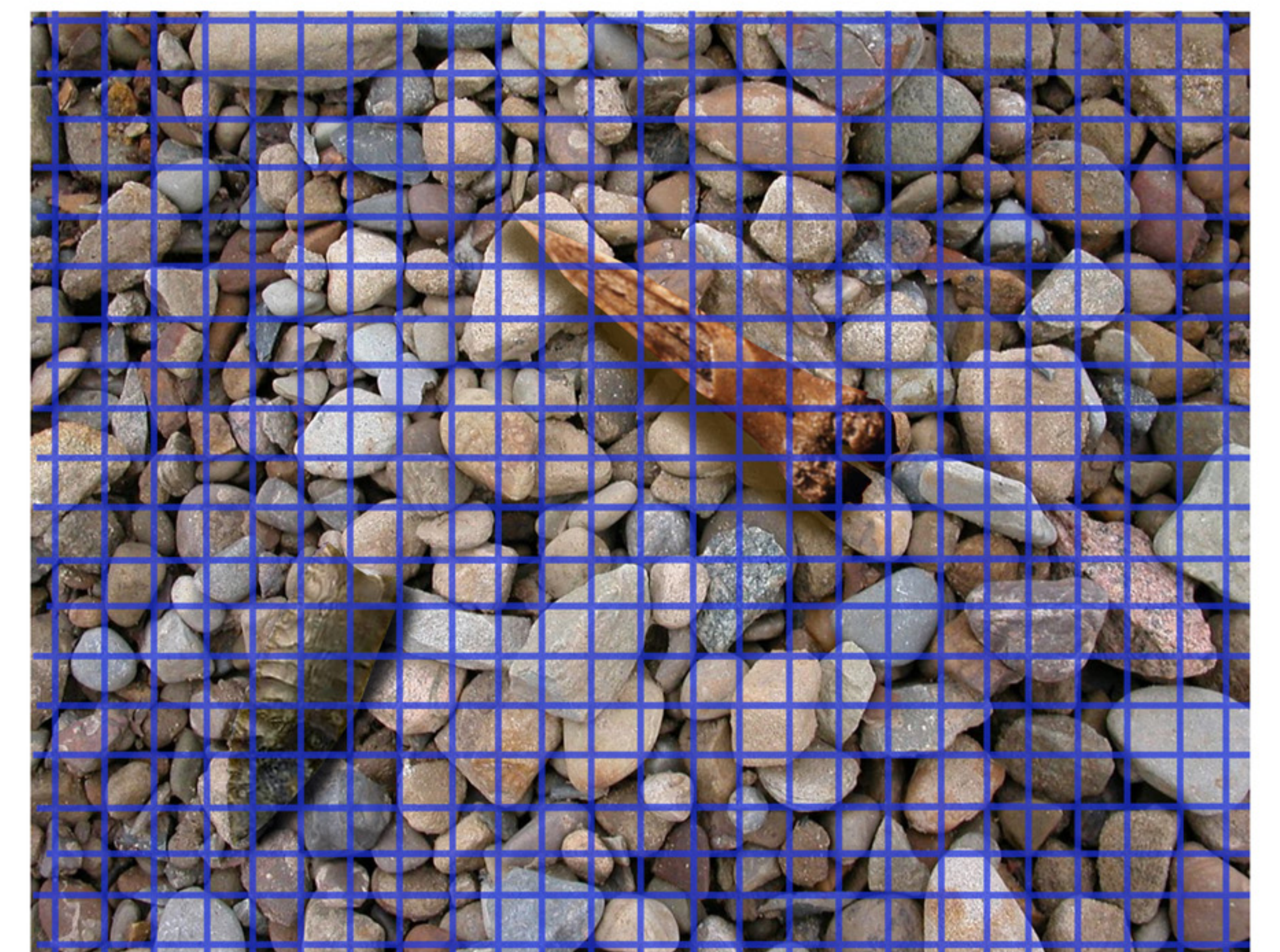
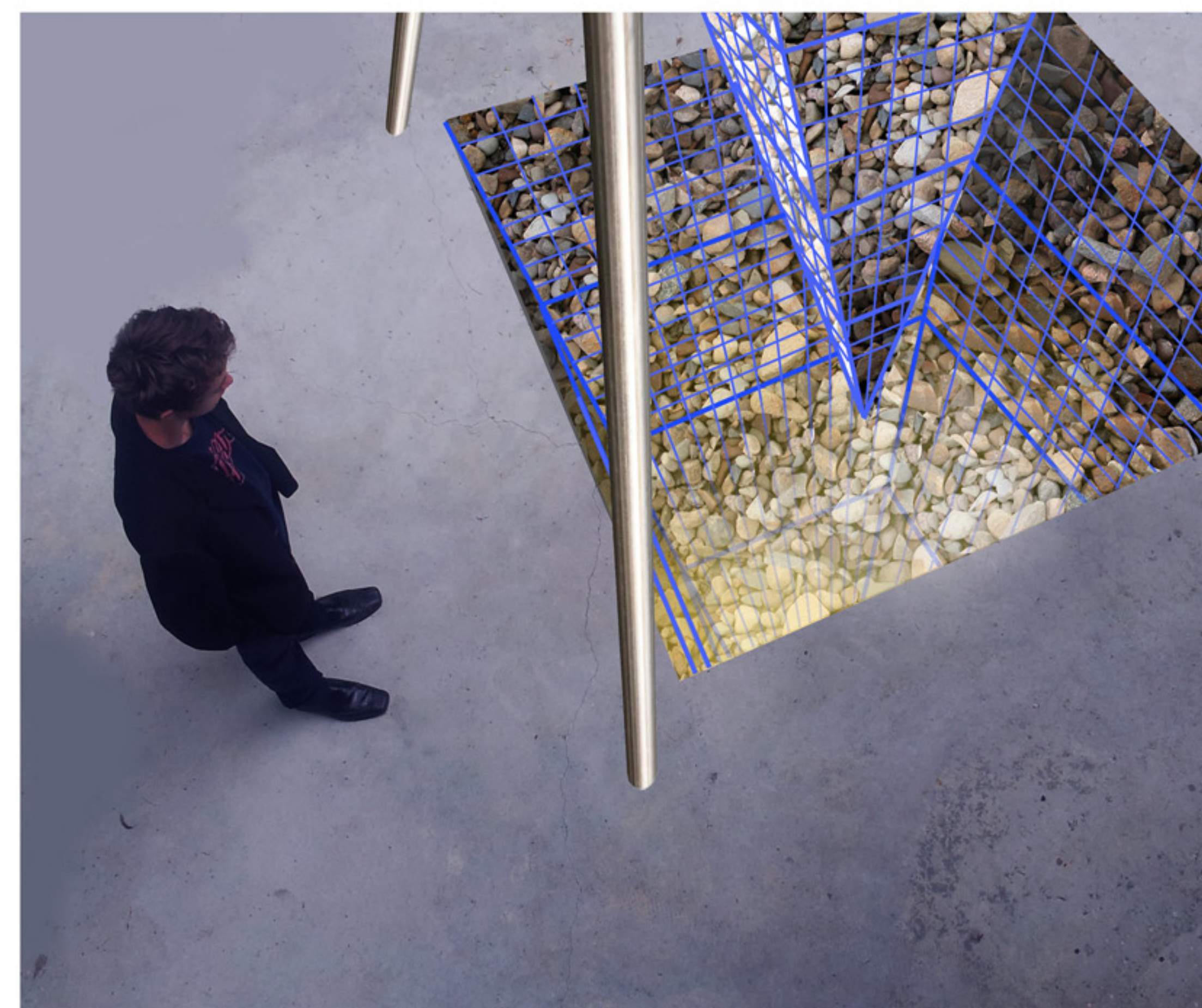
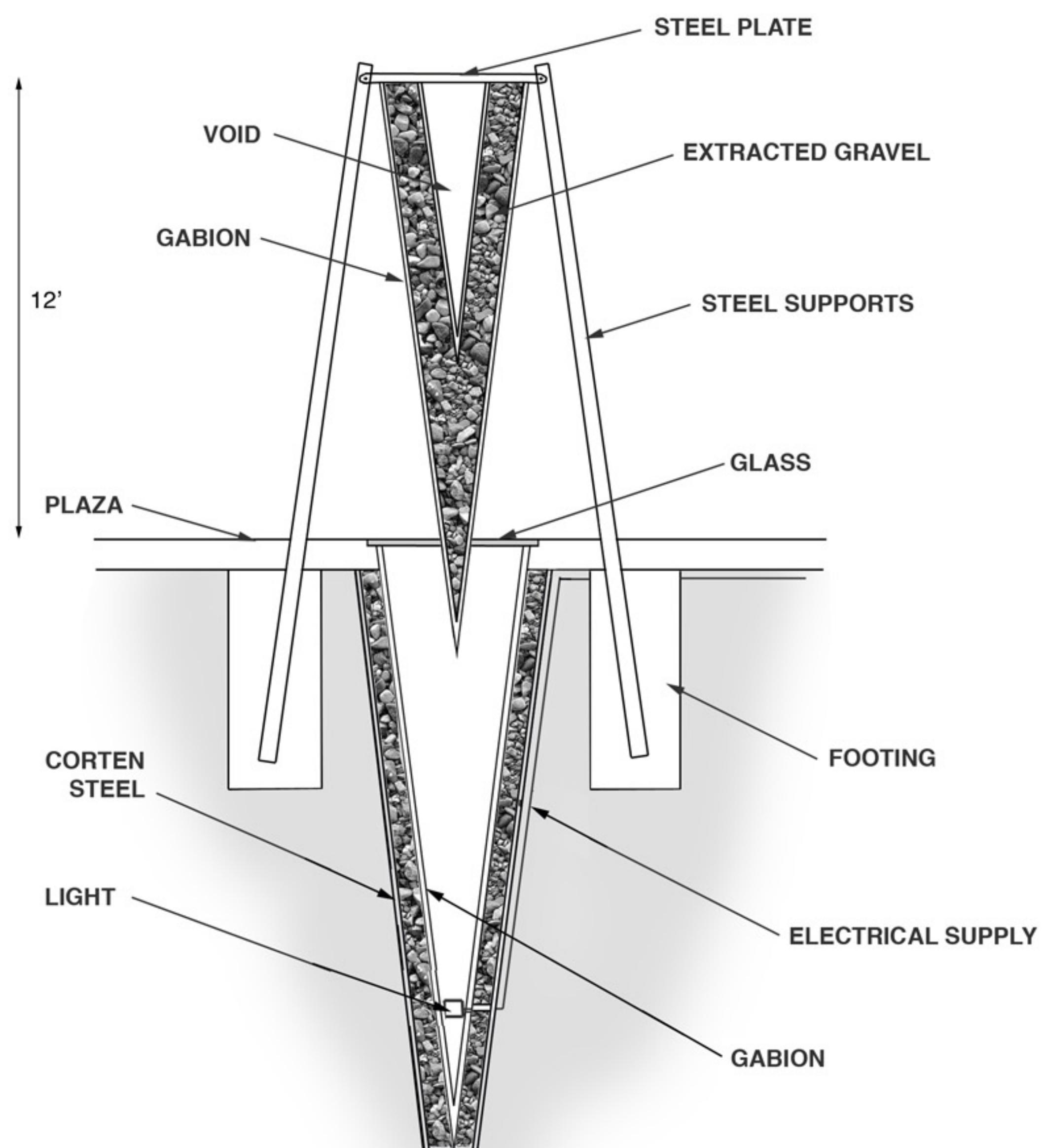
Art Proposal for the Alameda Creek Watershed Center: Entryway

Mark Brest van Kempen

This project reveals the geology and history of the site by displacing a piece of the landscape itself. A portion of the earth is raised and suspended showing a cross section of what is underground. The excavated land is contained in a steel mesh and is elevated above the hole where it was extracted. The hole is covered with thick glass that can withstand foot traffic while allowing viewers to look into the underground space. A light deep in the hole illuminates the space and lights the suspended land from below. The piece highlights the importance of the deep gravel geology of the site to the collection of water for human use.

The history of the site is illustrated by a number of objects that are interspersed in the stones and gravel of the raised chunk of land. Bones, artifacts and parts of machinery all give a visual reference to the history of animals, native peoples and the farming past of the site. These objects are not labeled or referred to but are meant to be discovered and questioned just as any object found on a site.

The color of the steel mesh (shown as blue in the illustrations) may change during the final design process to match, highlight or contrast with other elements of the project.



Art Proposal for the Alameda Creek Watershed Center: Landscape

Mark Brest van Kempen

This sculptural intervention creates a circular ramp-shaped negative space in the landscape that provides a new way of experiencing the surrounding environment as well as providing a striking sculptural object that interacts with water and light. Like an inverted aquarium this sculptural space creates a window where aquatic life can be closely observed, but unlike an aquarium that contains the observed, this space contains the observer. Instead of artificially recreating a piece of landscape to be observed behind glass as most aquariums do, this project uses the actual surrounding landscape as its focus. The pond will create habitat for Pacific Chorus frogs, dragonfly larvae, California newts, and many other creatures.

The piece can be experienced by walking inside it and looking into the landscape and also standing outside it and experiencing the form's relationship to the landscape. Viewing the piece from outside, its translucent sections of glass and water will continually interact with the changing aspects of light throughout the day and seasons.

This piece can easily be lit at night to create a stunning display.

The color of the walkway may be vibrant or subtle and will be determined after conducting on site tests.

