



Vicinity Map



Alameda Creek Diversion Dam Fish Passage Facilities

Building Location: The proposed building is located north of the SFPUC Calaveras Dam. The building is to house control equipment for building maintenance and electrical equipment for control of the fish ladder located on the site.

Project Size: The total building area of the building is approximately 1,100 square feet. (18' x 61')
Roof Height varies from 10'-0" above finished floor to 13'-0" to top of roof.

Proposed Building Materials: Prefabricated building system, board form concrete exterior walls, corrugated metal siding panels, corrugated metal roof panels, and translucent roof skylights

Design Intent: To provide simple and inexpensive enclosures for electrical equipment and site maintenance equipment that are "contemporary" in design and responsive to the existing site features and the proposed fish passage facility. The enclosure shall minimize energy usage and incorporate sustainable design practices.

Proposed Sustainable Design Goals include:

Heat Island Effect (Use of materials with recommended solar reflectance index)

Reduced Power Input (Use of daylighting devices in lieu of artificial lighting)

Materials Reuse (Use of building materials with recycled content)



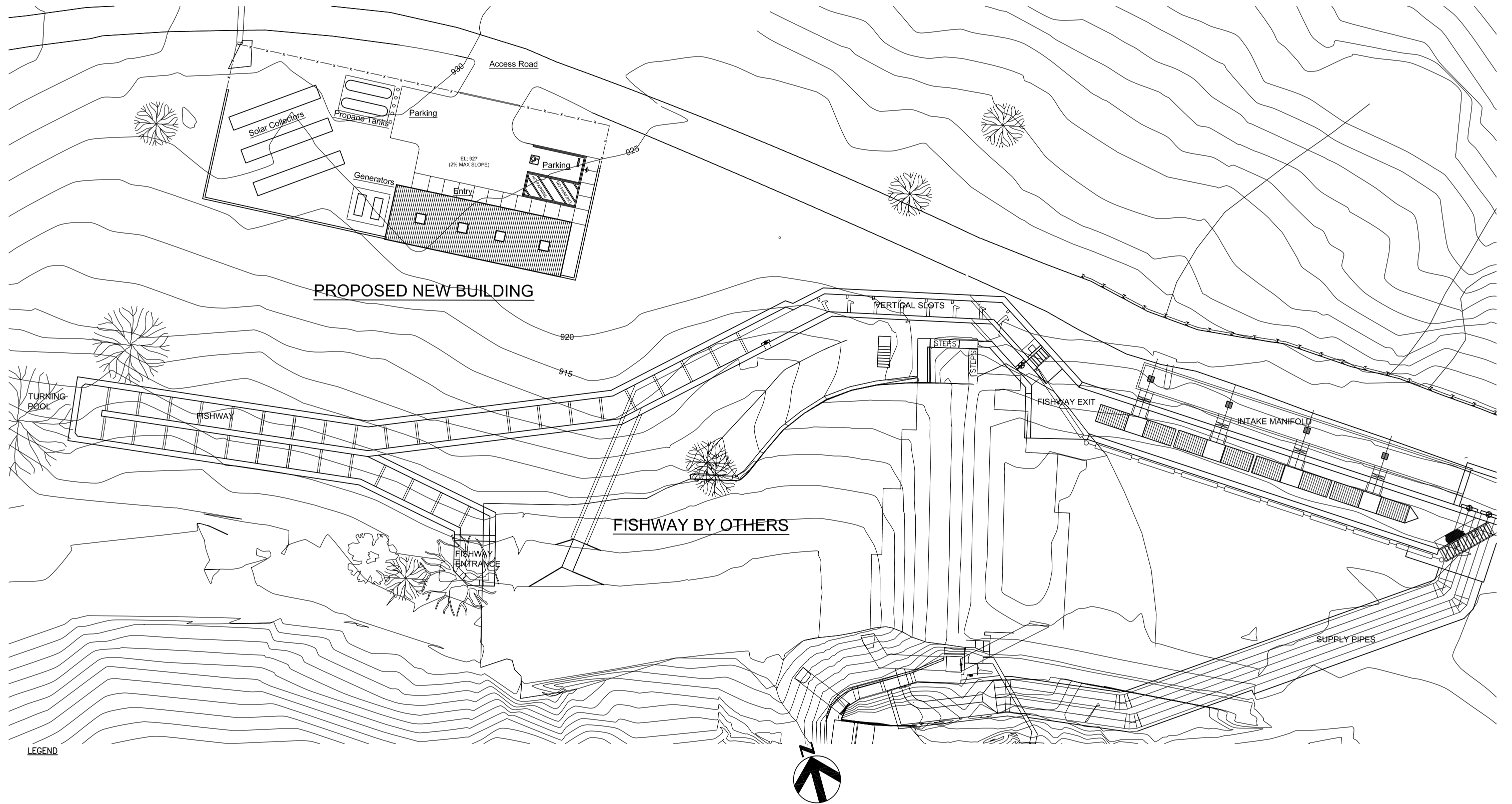
**Calaveras
Dam**

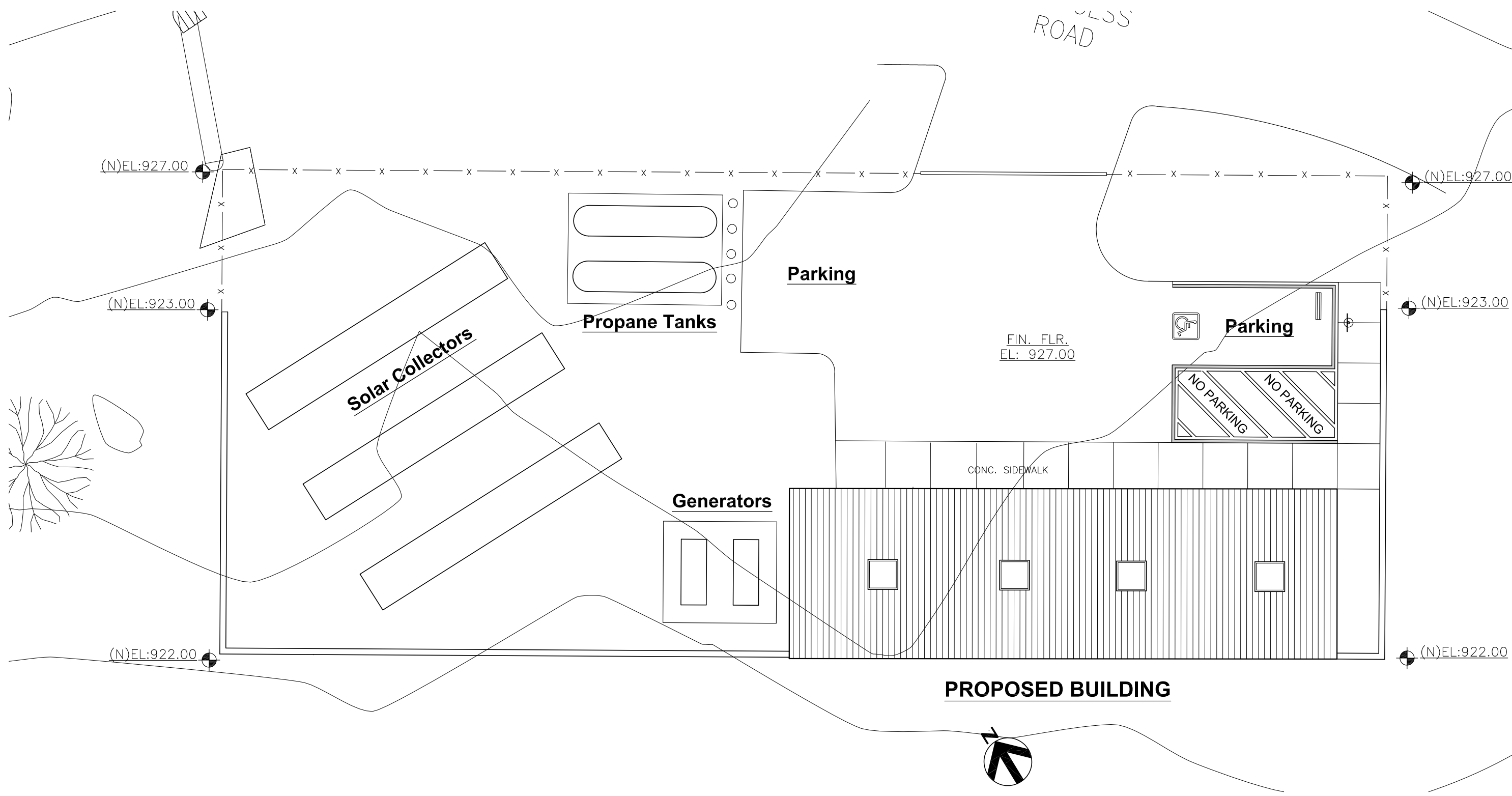
Calaveras Reservoir, California
Calaveras Reservoir

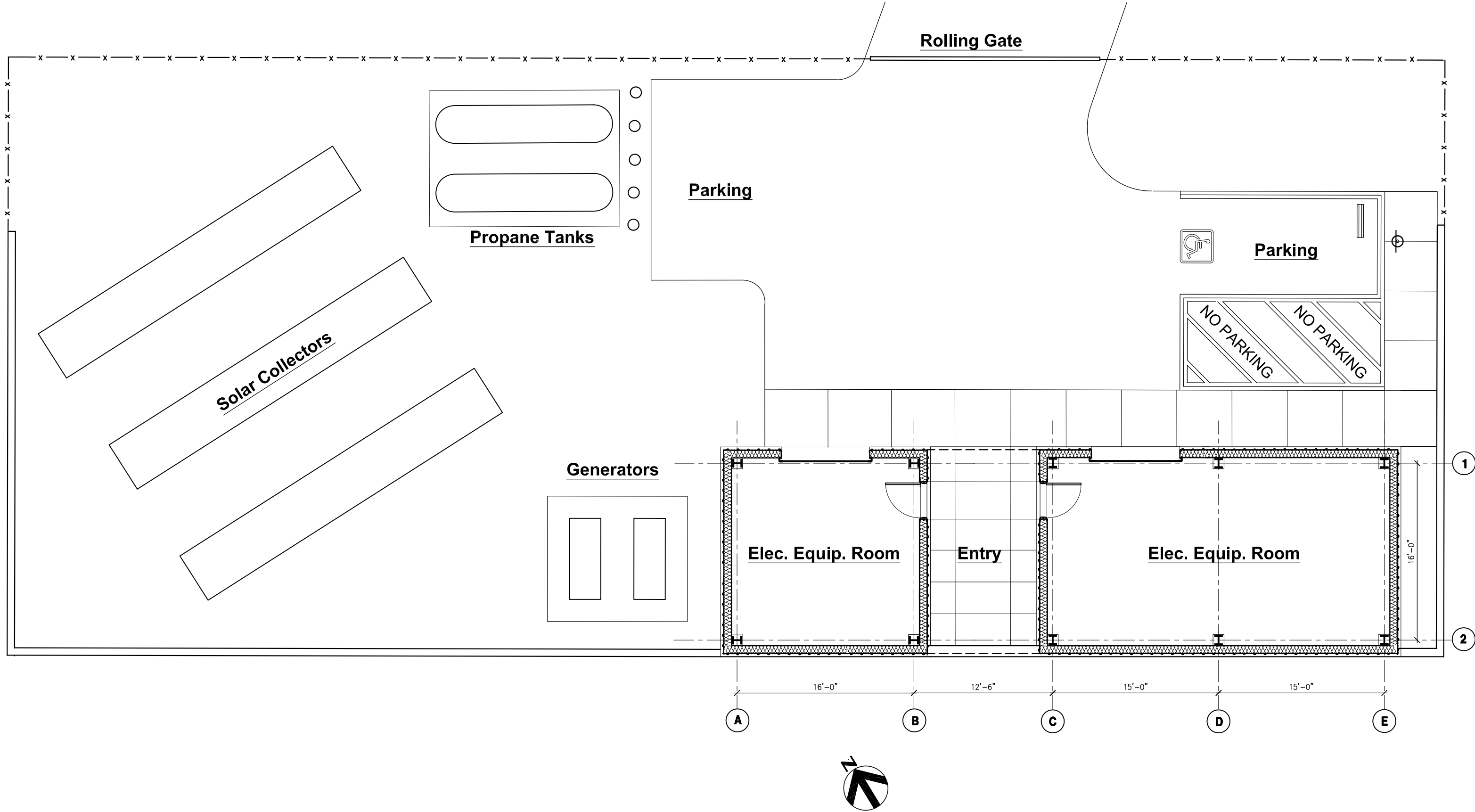
**Building
Site**

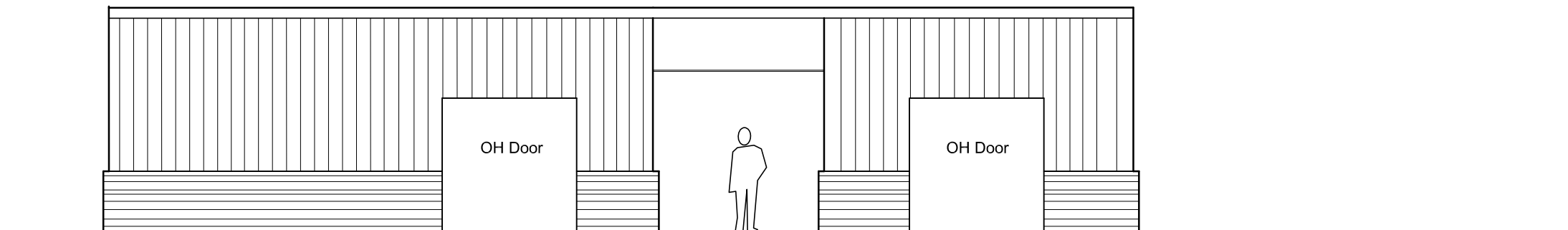
Site Aerial Photo



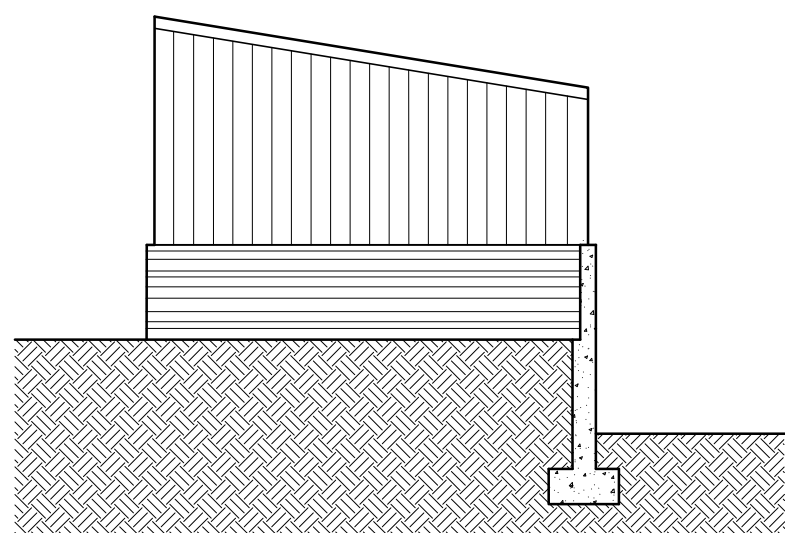




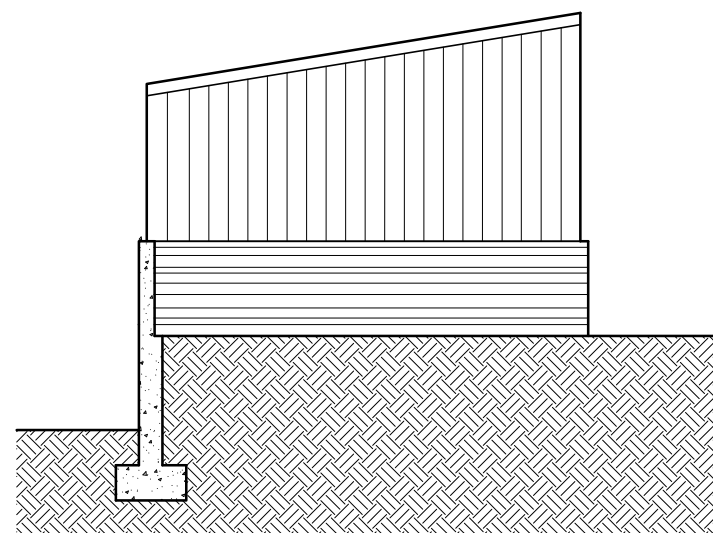




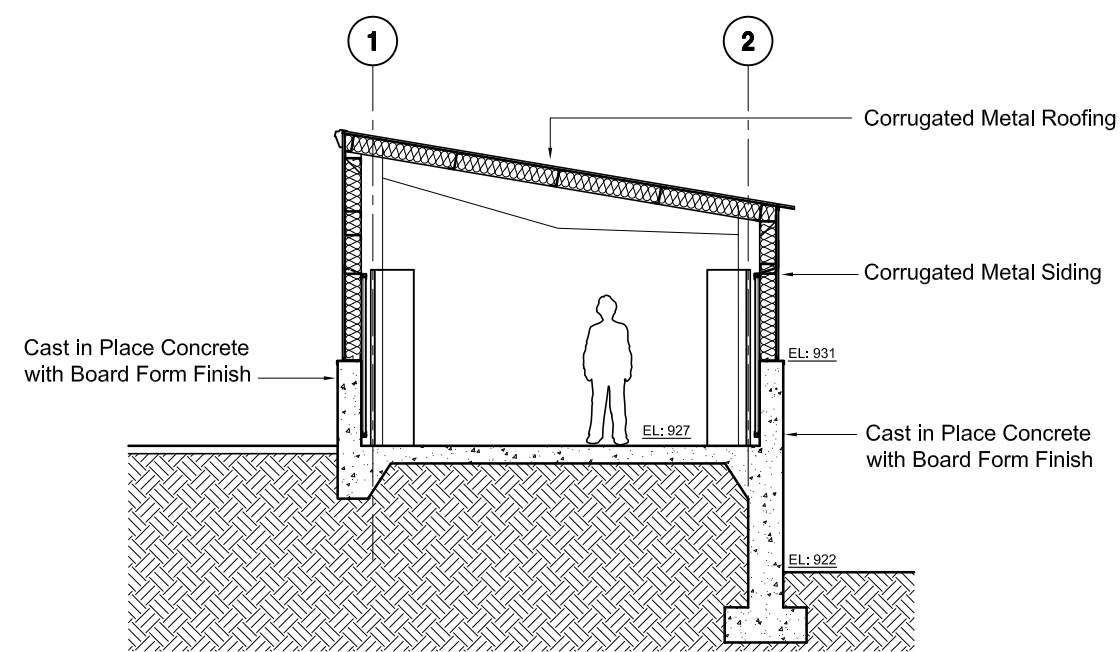
North Elevation



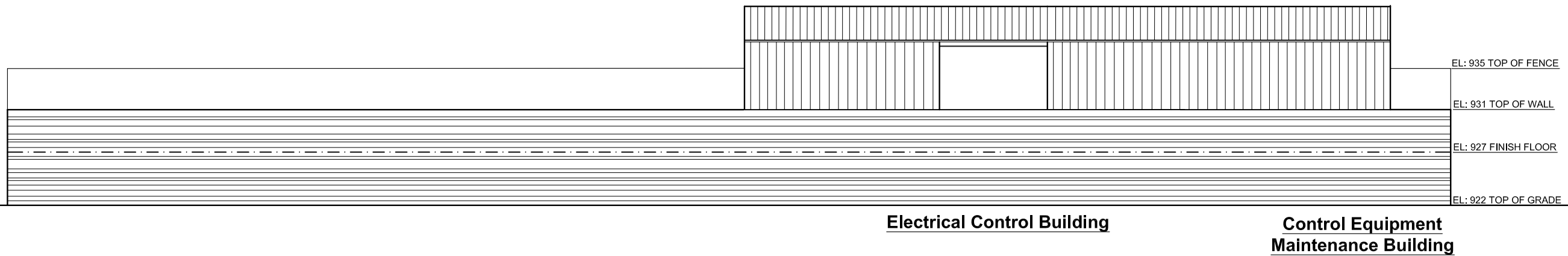
West Elevation



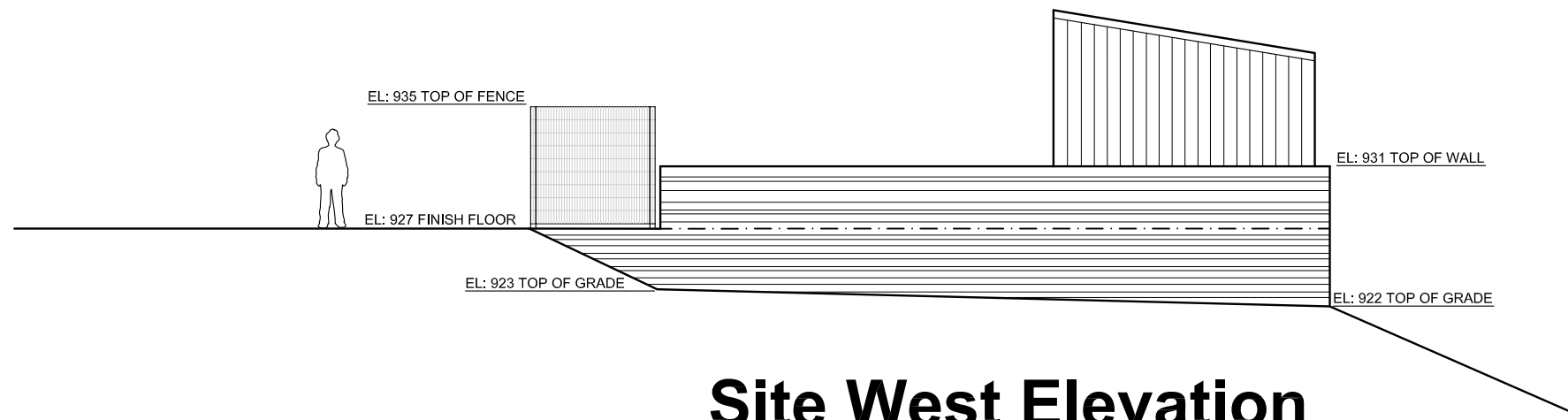
East Elevation



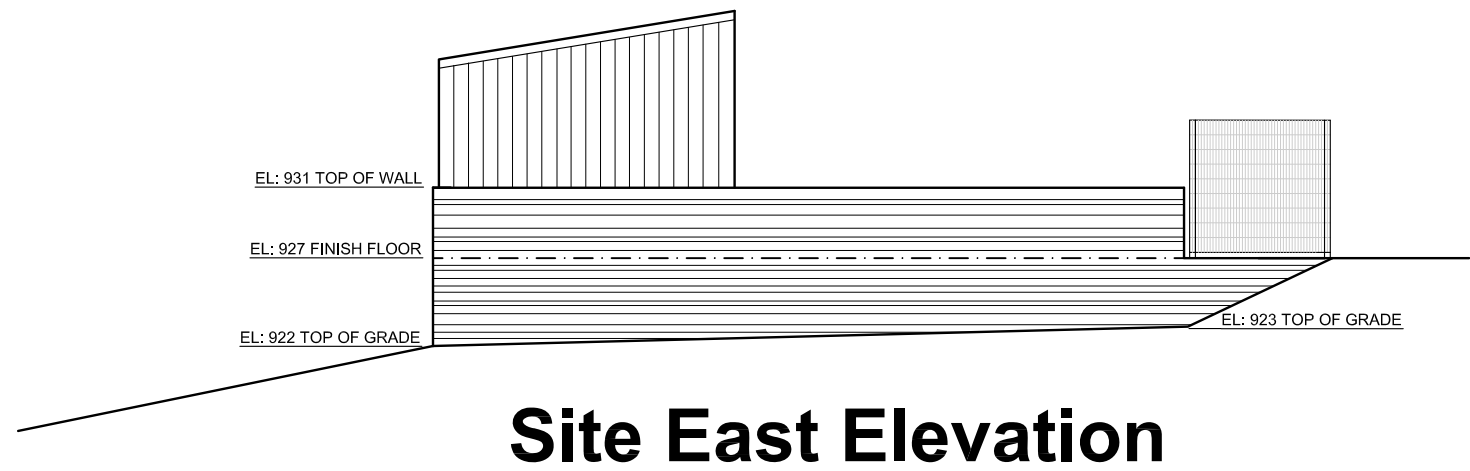
Section



Site South Elevation



Site West Elevation



Site East Elevation



Board Form Concrete



Security Fence



**Corrugated Metal Wall
and Roof Panels**

