



September 2013 - Phase 1 Design Review - *Approved*

July 2014 - Phase 2 Design Review

August 2014 - Phase 2 (Informal) Design Review

October 2014 - Phase 2 (Informal) Design Review

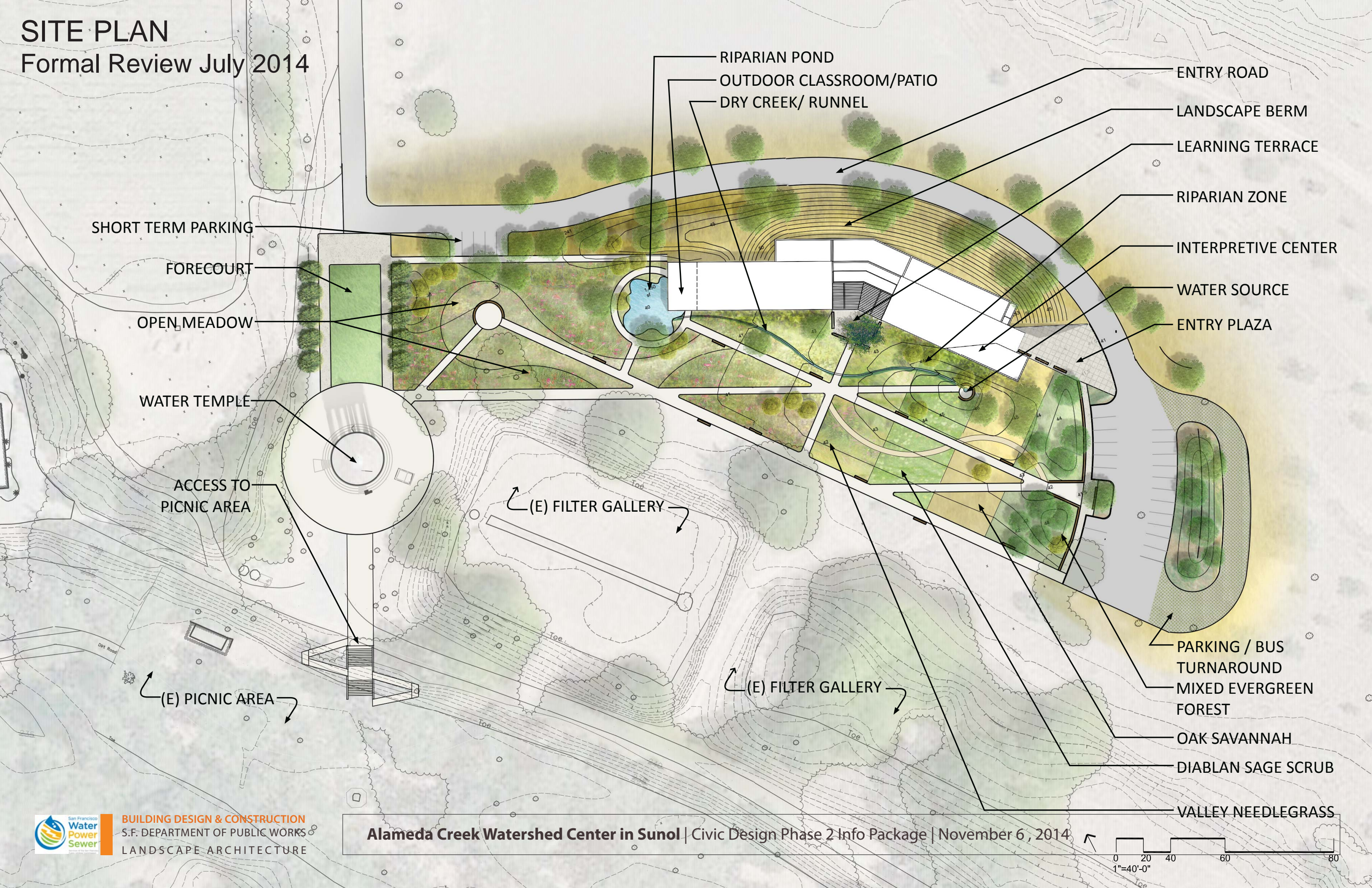
November 2014 - Phase 2 Design Review





# SITE PLAN

## Formal Review July 2014



SHORT TERM PARKING

FORECOURT

OPEN MEADOW

WATER TEMPLE

ACCESS TO  
PICNIC AREA

(E) PICNIC AREA

(E) FILTER GALLERY

(E) FILTER GALLERY

RIPARIAN POND  
OUTDOOR CLASSROOM/PATIO  
DRIY CREEK/ RUNNEL

ENTRY ROAD

LANDSCAPE BERM

LEARNING TERRACE

RIPARIAN ZONE

INTERPRETIVE CENTER

WATER SOURCE

ENTRY PLAZA

PARKING / BUS  
TURNAROUND

MIXED EVERGREEN  
FOREST

OAK SAVANNAH

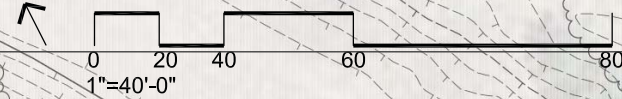
DIABLAN SAGE SCRUB

VALLEY NEEDLEGRASS



**BUILDING DESIGN & CONSTRUCTION**  
S.F. DEPARTMENT OF PUBLIC WORKS  
LANDSCAPE ARCHITECTURE

**Alameda Creek Watershed Center in Sunol | Civic Design Phase 2 Info Package | November 6, 2014**





# COMMENTS

Formal Review July 2014

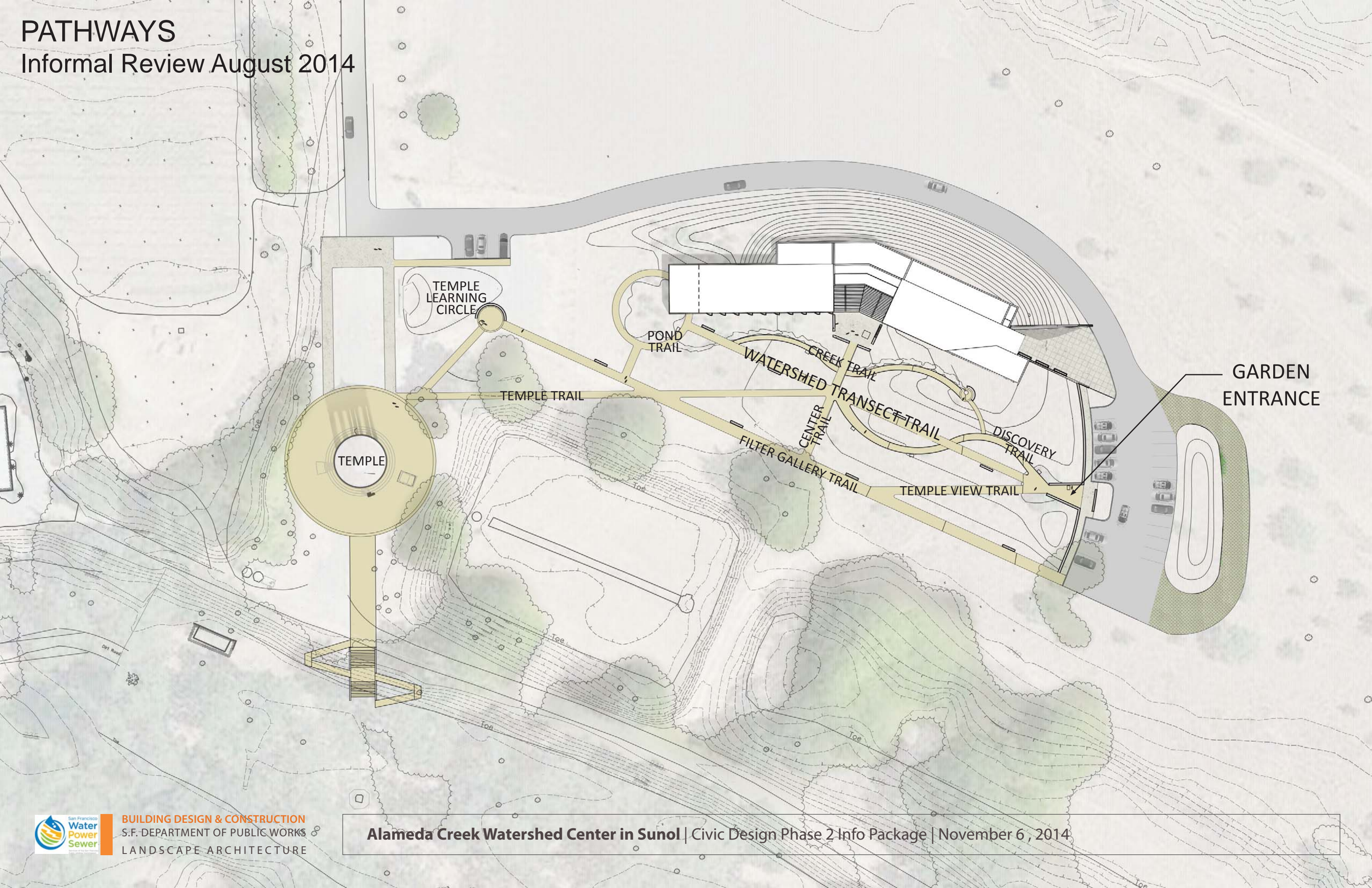
1. Clarify landscape scale
2. Consider modifying the layout of the pathways
3. Reconsider the ring path around the pond
4. Reevaluate the runnel system in a natural context
5. Provide a more detailed planting plan





# PATHWAYS

Informal Review August 2014

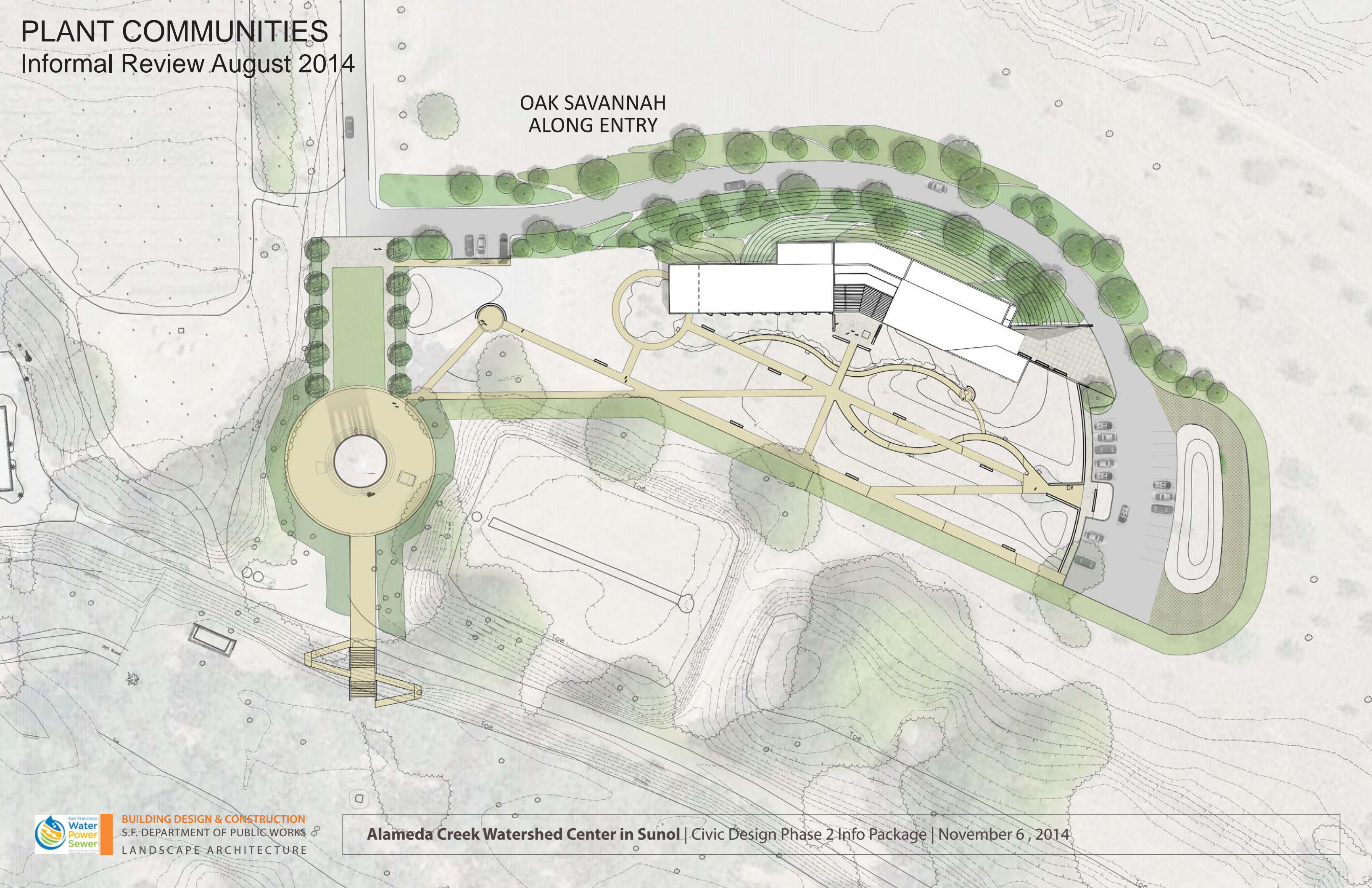


**BUILDING DESIGN & CONSTRUCTION**  
S.F. DEPARTMENT OF PUBLIC WORKS  
LANDSCAPE ARCHITECTURE

**Alameda Creek Watershed Center in Sunol | Civic Design Phase 2 Info Package | November 6, 2014**



OAK SAVANNAH  
ALONG ENTRY





# PLANT COMMUNITIES

Informal Review August 2014



MIXED EVERGREEN FOREST



# PLANT COMMUNITIES

Informal Review August 2014



OAK SAVANNAH



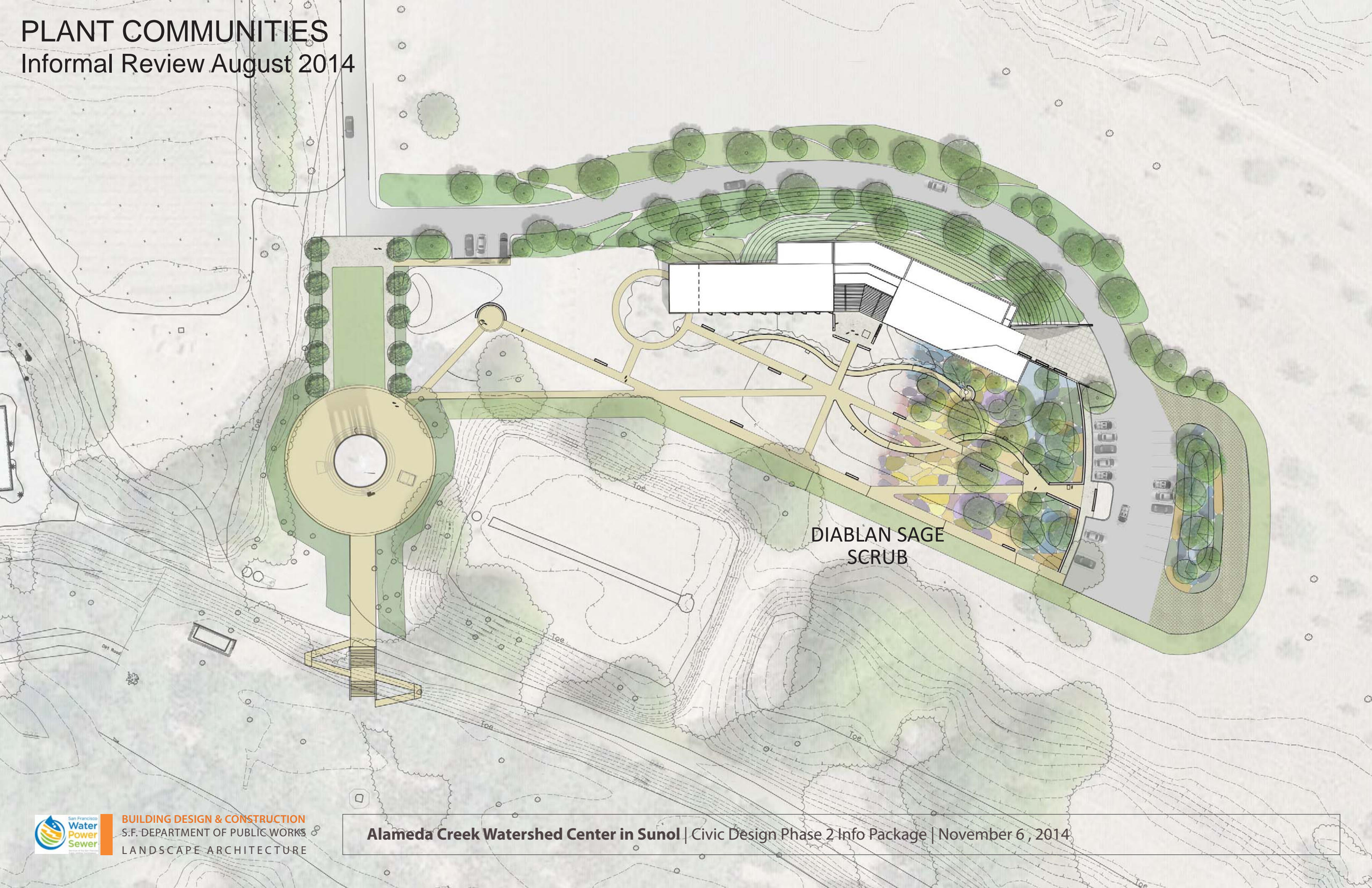
**BUILDING DESIGN & CONSTRUCTION**  
S.F. DEPARTMENT OF PUBLIC WORKS  
LANDSCAPE ARCHITECTURE

**Alameda Creek Watershed Center in Sunol** | Civic Design Phase 2 Info Package | November 6, 2014



# PLANT COMMUNITIES

Informal Review August 2014



DIABLAN SAGE  
SCRUB



**BUILDING DESIGN & CONSTRUCTION**  
S.F. DEPARTMENT OF PUBLIC WORKS  
LANDSCAPE ARCHITECTURE

**Alameda Creek Watershed Center in Sunol | Civic Design Phase 2 Info Package | November 6, 2014**



# PLANT COMMUNITIES

Informal Review August 2014



CHAPARRAL



**BUILDING DESIGN & CONSTRUCTION**  
S.F. DEPARTMENT OF PUBLIC WORKS  
LANDSCAPE ARCHITECTURE

**Alameda Creek Watershed Center in Sunol | Civic Design Phase 2 Info Package | November 6, 2014**



# PLANT COMMUNITIES

Informal Review August 2014



RIPARIAN



**BUILDING DESIGN & CONSTRUCTION**  
S.F. DEPARTMENT OF PUBLIC WORKS  
LANDSCAPE ARCHITECTURE

**Alameda Creek Watershed Center in Sunol** | Civic Design Phase 2 Info Package | November 6, 2014



# INTERPRETIVE SIGNAGE

Informal Review August 2014



INTERPRETIVE  
SIGNAGE







# PLANTING PLAN

## Informal Review August 2014

### PLANTING PALETTE

#### Trees

AC	Aesculus californica
AM	Acer macrophyllum
CO	Cercis occidentalis
CSS	Cornus sessilis var. sessilis
HA	Heteromeles arbutifolia
PR	Platanus racemosa
PS	Pinus sabiniana
PVD	Prunus virginiana demissa
QA	Quercus agrifolia
QB	Quercus berberidifolia
QD	Quercus douglasii
QL	Quercus lobata
QW	Quercus wizlenzii
SLA	Salix lasiolepis
SNC	Sambucus nigra ssp. caerulea

#### Entry Road Groundcovers

E1	Arctostaphylos cruzensis
E2	Arctostaphylos 'John Dourley'
E3	Arctostaphylos Hookeri Franciscana
E4	Arctostaphylos 'Pacific Mist'
E5	Baccharis pilularis 'Pigeon Point'
E6	Ceanothus thyrsiflorus griseus 'Yankee Point'
E7	Agrostis pallens/ Carex praegracilis/ Bouteloua gracilis

#### Native Meadow

M1	Achillea millefolium
M2	Sisyrinchium bellum
M3	Argrostris pallens
M4	Artemisia douglasiana
M5	Epilobium canum subsp. Canum
M6	Solidago elongata
M7	Ranunculus californicus var. californicus
M8	Leymus triticoides
M9	Koeleria macrantha
R3	Rhamnus californica
R9	Juncus effusus subsp. pacificus

#### Valley Needlegrass

G1	Nassella pulchra
G2	Lupinus formosus var. formosus
G3	Penstemon heterophyllus var. purdyi
G4	Eriogonum fasciculatum polifolium
G5	Sidalcea malviflora subsp. Laciniata
G6	Lupinus albifrons
G7	Eriophyllum confertiflorum var. confertiflorum
G8	Chlorogalum pomeridianum var. divaricatum

#### Riparian

R1	Carex nudata
R2	Rosa californica
R3	Rhamnus californica
R4	Stachys rigida var. quercetorum
R5	Mimulus cardinalis
R6	Mimulus guttatus
R7	Lonicera hispidula
R8	Symphoricarpos albus var. laevigatus
R9	Juncus effusus subsp. pacificus
CCS	Cornus sericea subsp. sericea

#### Diablan Sage Scrub

SS1	Artemisia californica
SS2	Salvia mellifera
SS3	Eriodictyon californicum
SS4	Mimulus aurantiacus
SS5	Eriogonum fasciculatum var. polifolium
SS6	Salvia apiana
G3	Penstemon heterophyllum var. purdyi
G6	Lupinus albifrons var. albifrons
G7	Eriophyllum confertiflorum var. confertiflorum

#### Chaparral

C1	Erysimum capitatum var. capitatum
C2	Melica torreyana
C3	Monardella villosa ssp. villosa
C4	Penstemon centranthifolius
C5	Silene laciniata subsp. Californica
C6	Adenostoma fasciculatum var. fasciculatum
C7	Arctostaphylos glauca
C8	Cercocarpus betuloides var. betuloides
C9	Rhamnus californica ssp. tomentella
C10	Lonicera subspicata
C11	Prunus illicifolia
C12	Rhamnus illicifolia
C13	Solanum umbelliferum
G3	Penstemon heterophyllum var. purdyi
G7	Eriophyllum confertiflorum var. confertiflorum
SS4	Mimulus aurantiacus

#### Oak Savannah

C2	Melica torreyana
C7	Arctostaphylos glauca
C10	Lonicera subspicata
C11	Prunus illicifolia
C12	Rhamnus illicifolia
C13	Solanum umbelliferum
G1	Nassella pulchra
G3	Penstemon heterophyllum var. purdyi
OS1	Bromus carinatus var. carinatus
SS4	Mimulus aurantiacus

#### Mixed Evergreen Forest

EF1	Aquilegia formosa
EF2	Satureja douglasii
EF3	Stachys rigida var. quercetorum
EF4	Thalictrum fendleri var. polycarpum
EF5	Physocarpus capitatus
EF6	Ribes sanguineum var. glutinosum
C12	Rhamnus illicifolia
R3	Rhamnus californica
R7	Lonicera hispidula
R8	Symphoricarpos albus var. laevigatus





# WATERSHED TRANSECT

Informal Review August 2014





# COMMENTS

Informal Review August 2014

1. Clarify design intent / statement (botanical garden vs. representational landscape)
2. Reduce quantity of oaks and enlarge size of the Oak Savannah plant community.
3. Provide more details of the runnel





# DESIGN STATEMENT

Informal Review October 2014

*The grounds of the Alameda Creek Watershed Center serve as an informal botanical garden set within the context of the watershed. A trail meanders through this two-acre setting, taking visitors through various vignettes that simply suggest the middle and upper reaches of the Alameda Creek watershed. The intent is not to represent the real landscape, spatially or otherwise. Rather, it is to create an informal garden whose plant collection is arranged thematically. There visitors become immersed in the landscape and more attuned to East Bay's remarkable botanical diversity.*





# SITE PLAN

Informal Review October 2014



INTERMITTENT DRY CREEK  
PATIO  
POND

ENTRY ROAD  
LANDSCAPE BERM  
LEARNING TERRACE

SHORT TERM  
PARKING  
FORECOURT  
NATIVE MEADOW

RIPARIAN ZONE  
INTERPRETIVE CENTER  
WATER SOURCE  
ENTRY PLAZA

INTERPRETIVE  
SIGNAGE  
GARDEN  
ENTRANCE

WATER TEMPLE  
ACCESS TO  
PICNIC AREA

(E) FILTER GALLERY

(E) PICNIC AREA

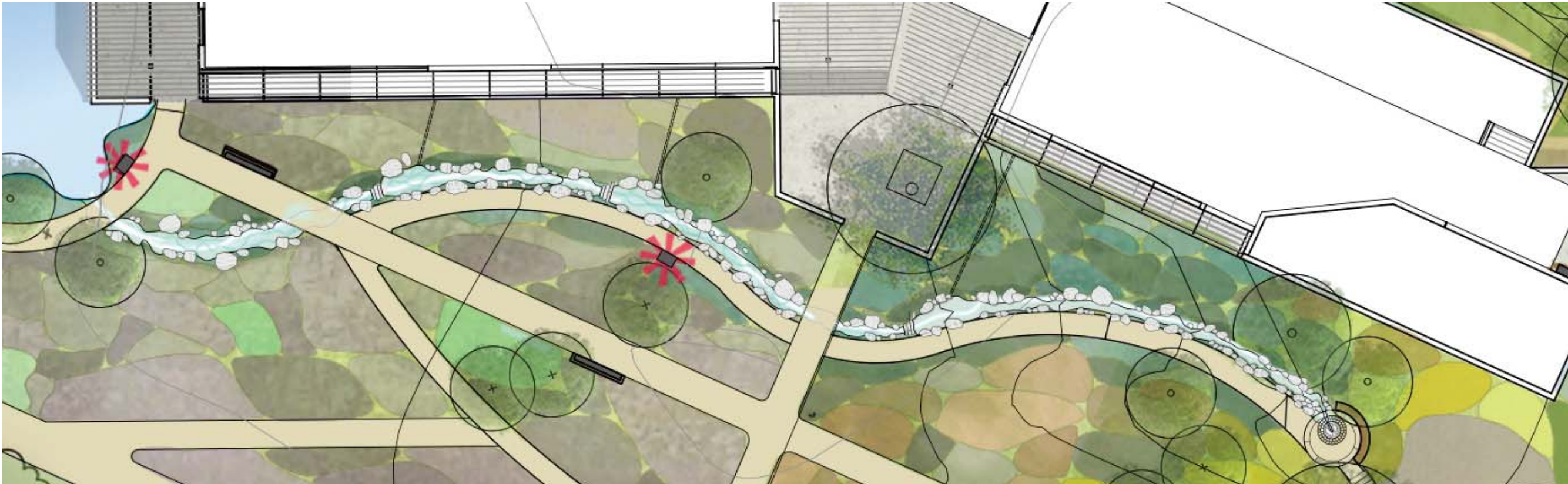
(E) FILTER GALLERY

PARKING /  
BUS TURNAROUND  
MIXED EVERGREEN FOREST  
OAK SAVANNAH  
CHAPARRAL  
DIABLAN SAGE SCRUB  
VALLEY NEEDLEGRASS

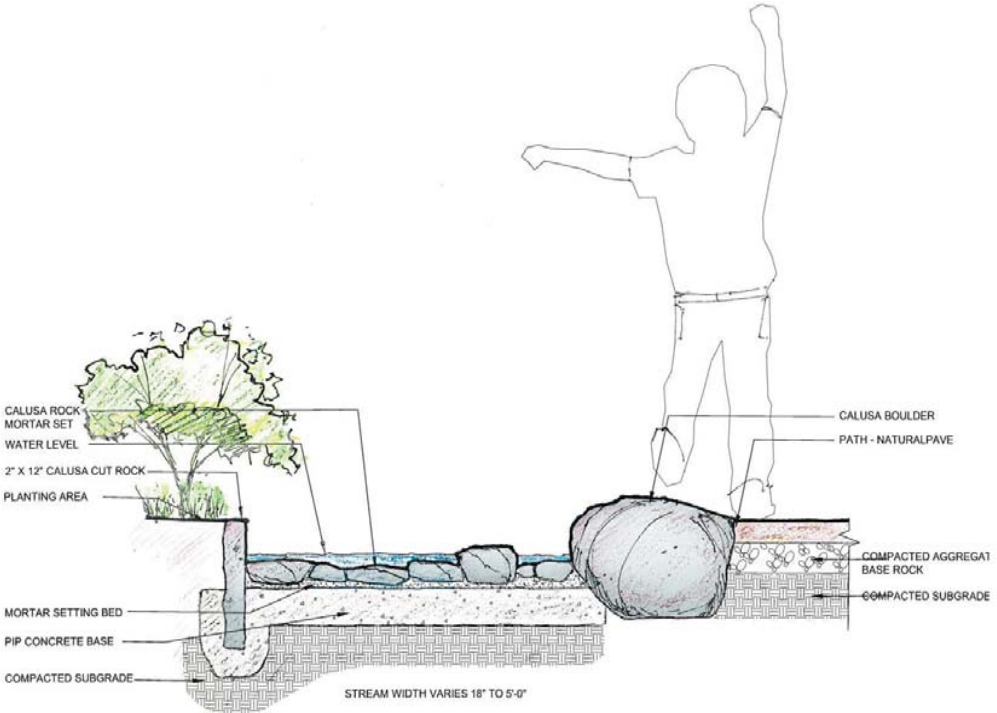


# STREAM PROFILE

Informal Review October 2014



Intermittent Stream Enlargement



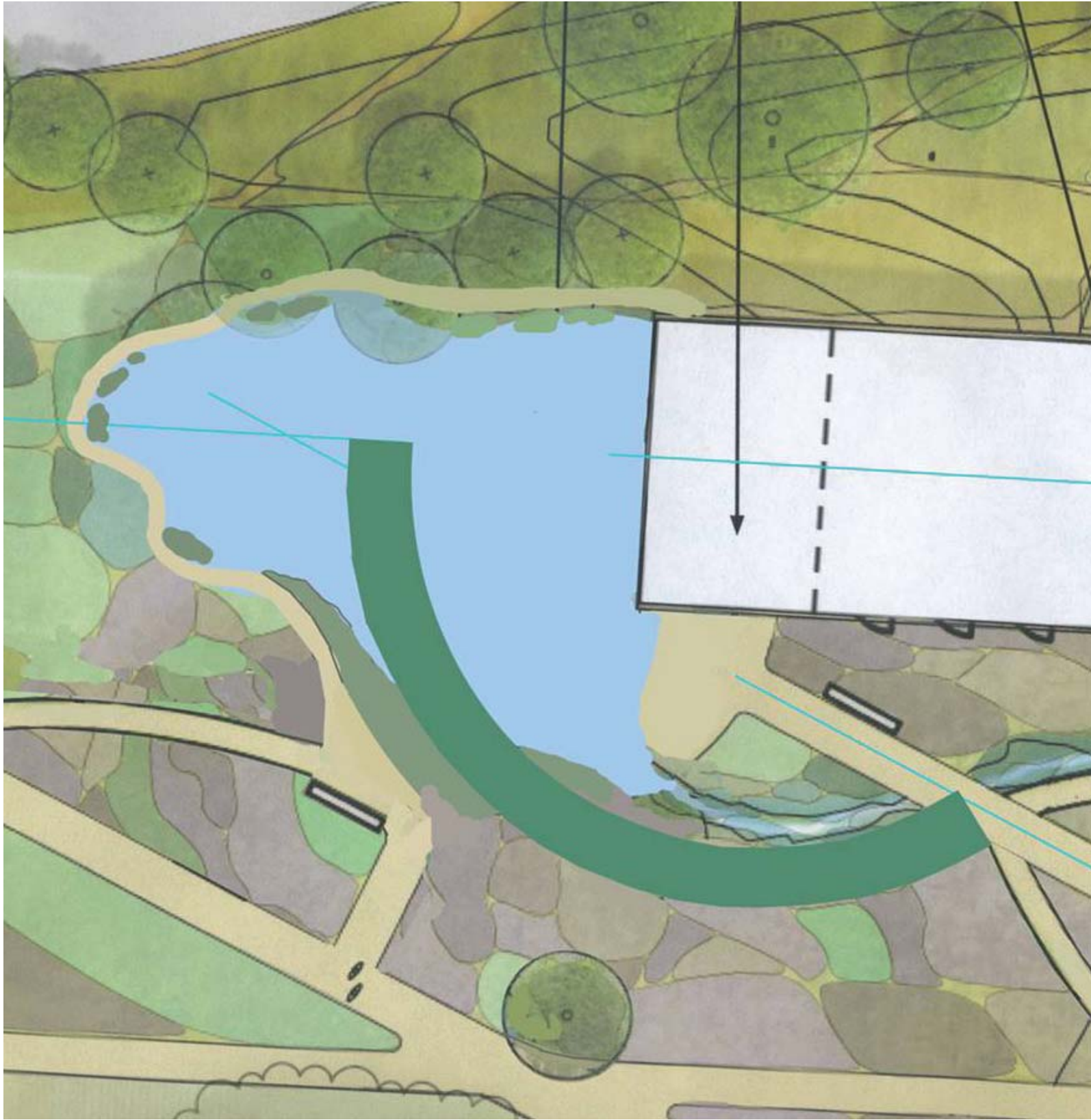
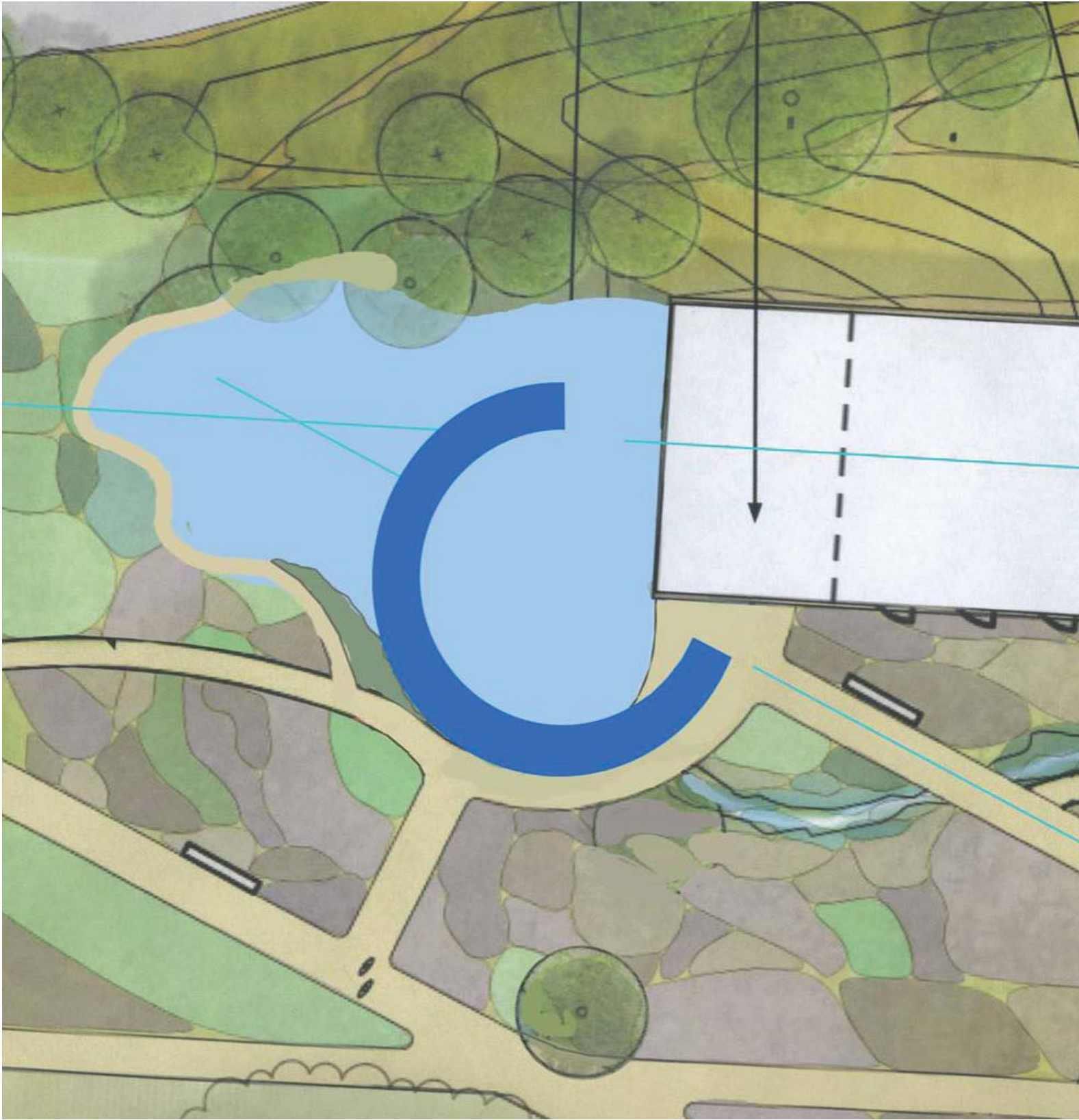
Intermittent Stream Section





# MARK BREST VAN KEMPEN

Informal Review October 2014



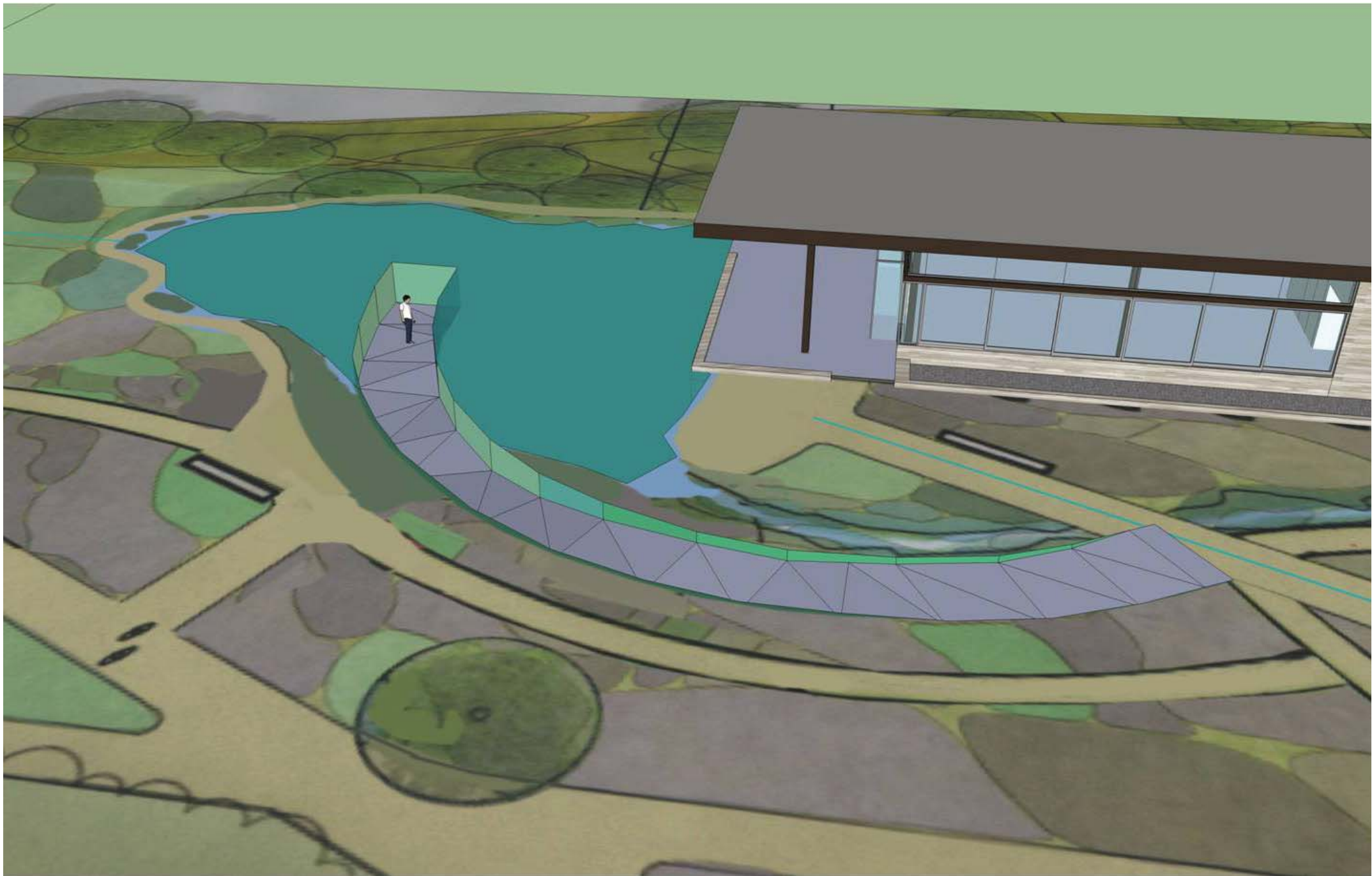
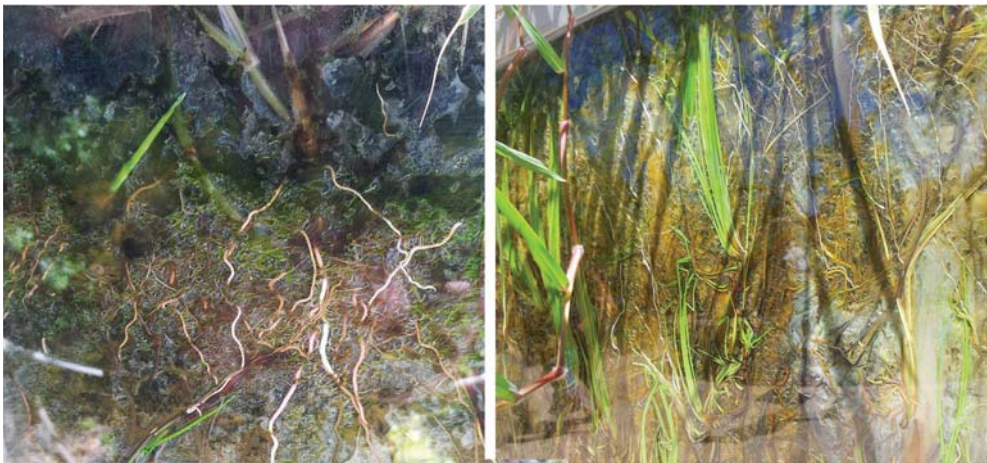
**BUILDING DESIGN & CONSTRUCTION**  
S.F. DEPARTMENT OF PUBLIC WORKS  
LANDSCAPE ARCHITECTURE

**Alameda Creek Watershed Center in Sunol** | Civic Design Phase 2 Info Package | November 6, 2014



# MARK BREST VAN KEMPEN

Informal Review October 2014

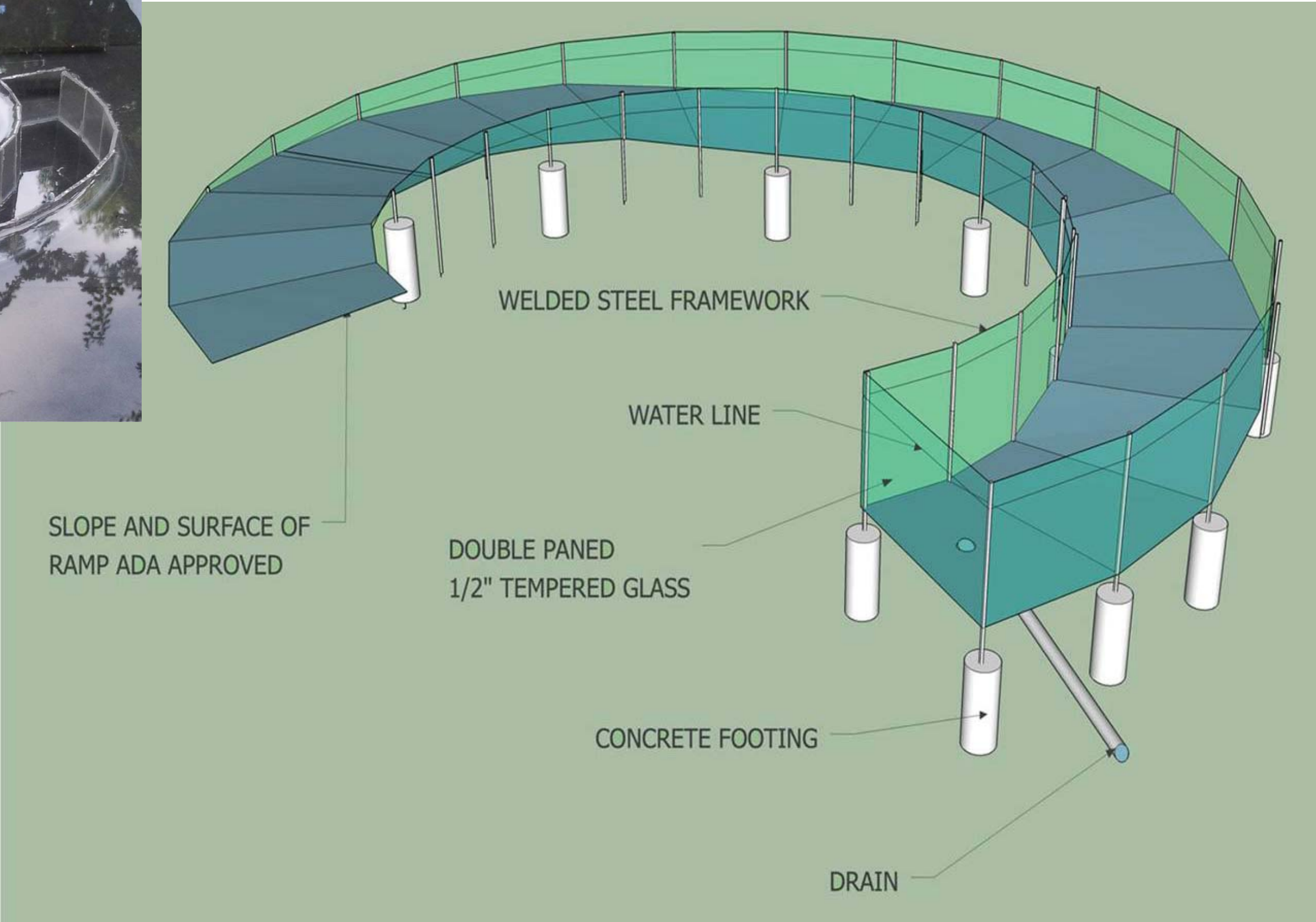


**BUILDING DESIGN & CONSTRUCTION**  
S.F. DEPARTMENT OF PUBLIC WORKS  
LANDSCAPE ARCHITECTURE



# MARK BREST VAN KEMPEN

Informal Review October 2014

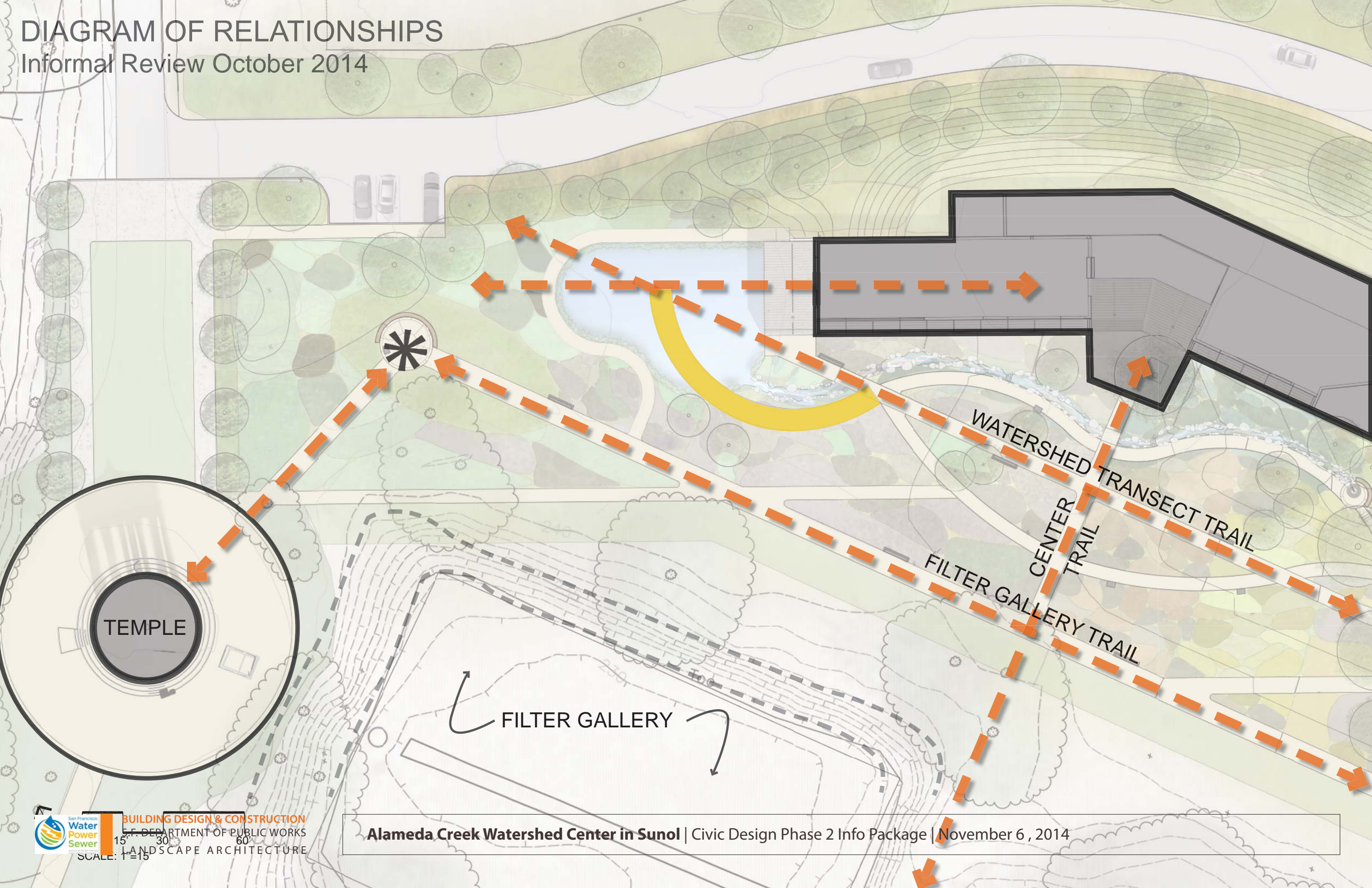


**BUILDING DESIGN & CONSTRUCTION**  
S.F. DEPARTMENT OF PUBLIC WORKS  
LANDSCAPE ARCHITECTURE



# DIAGRAM OF RELATIONSHIPS

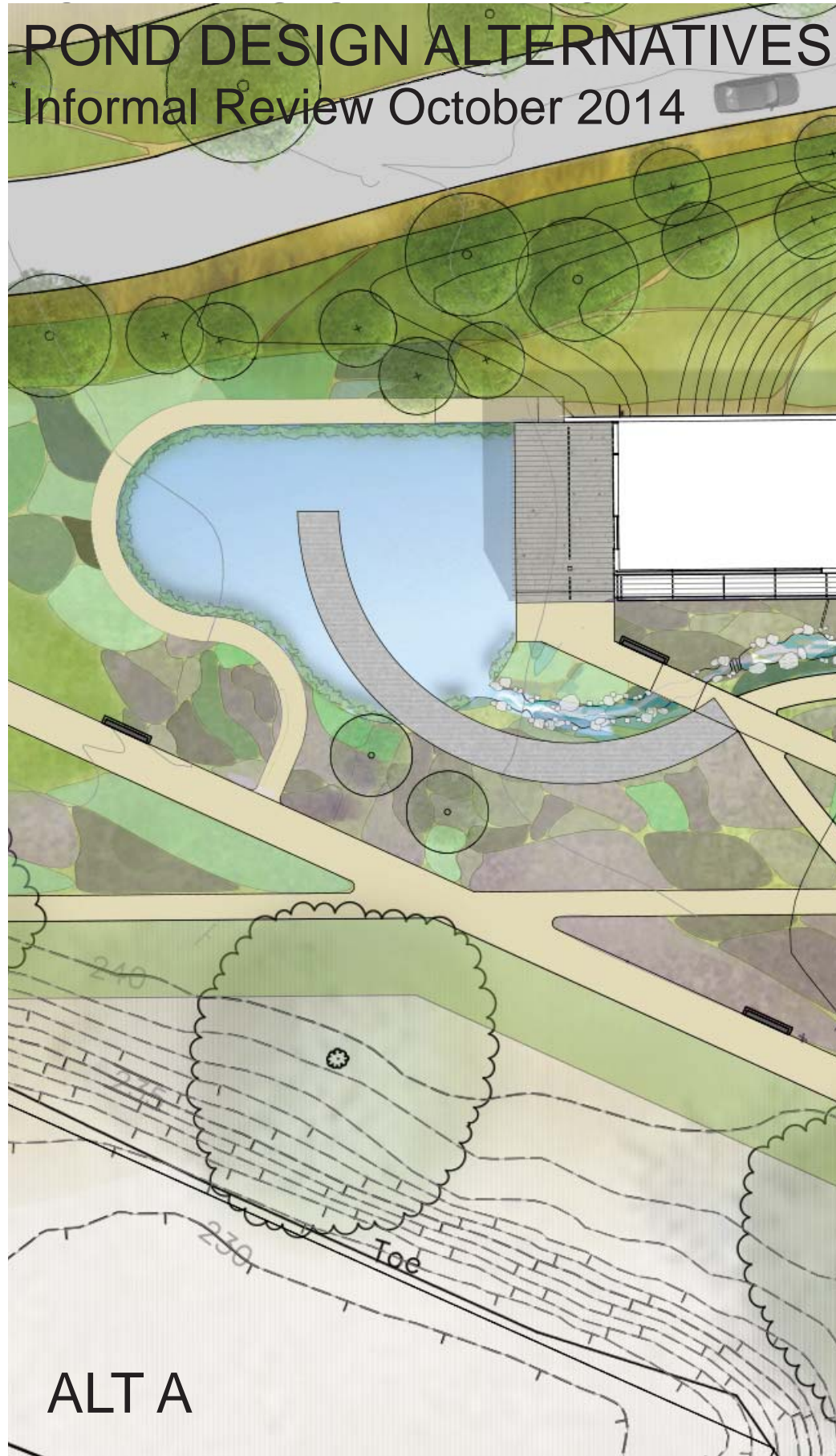
Informal Review October 2014



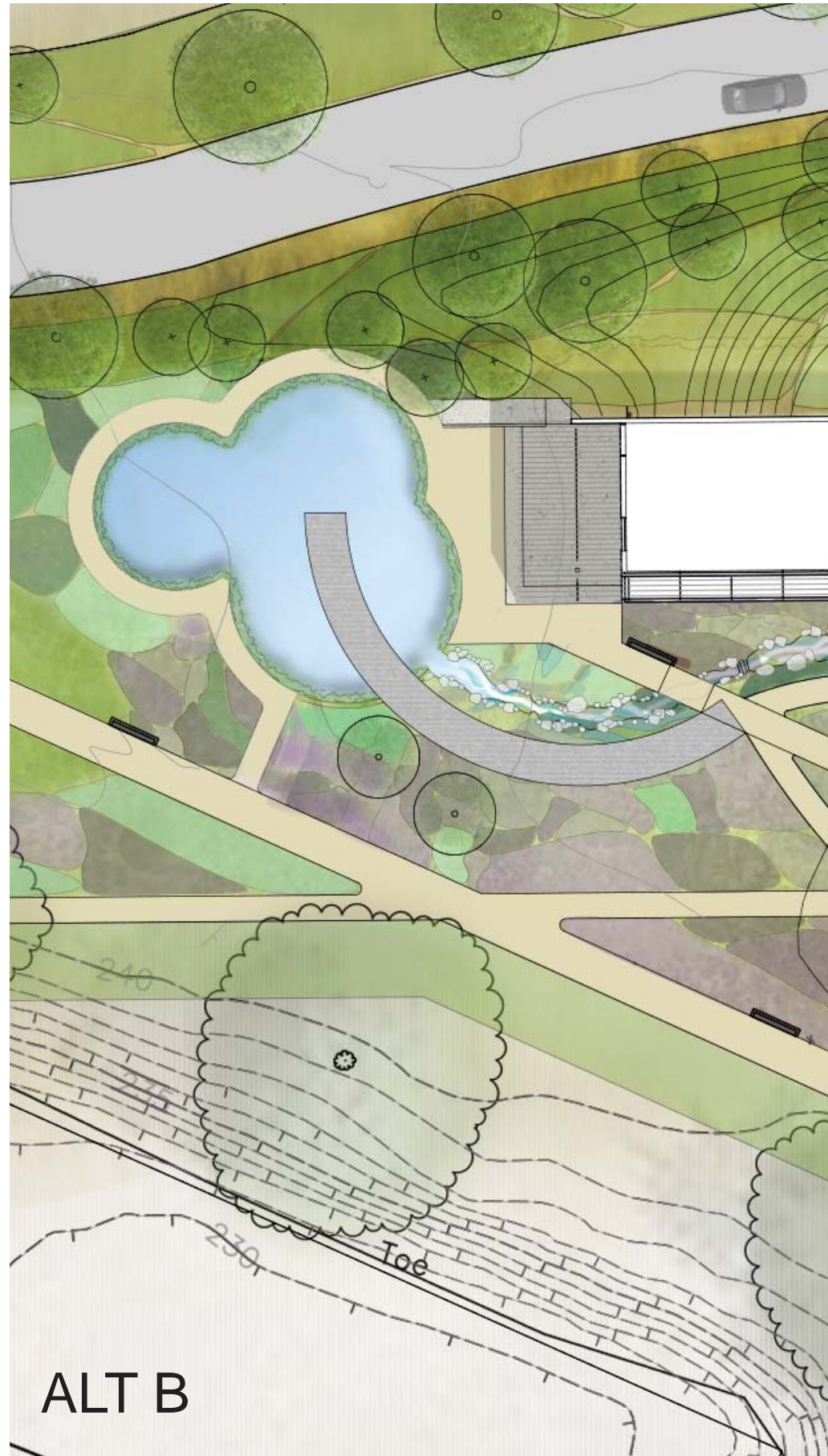


# POND DESIGN ALTERNATIVES

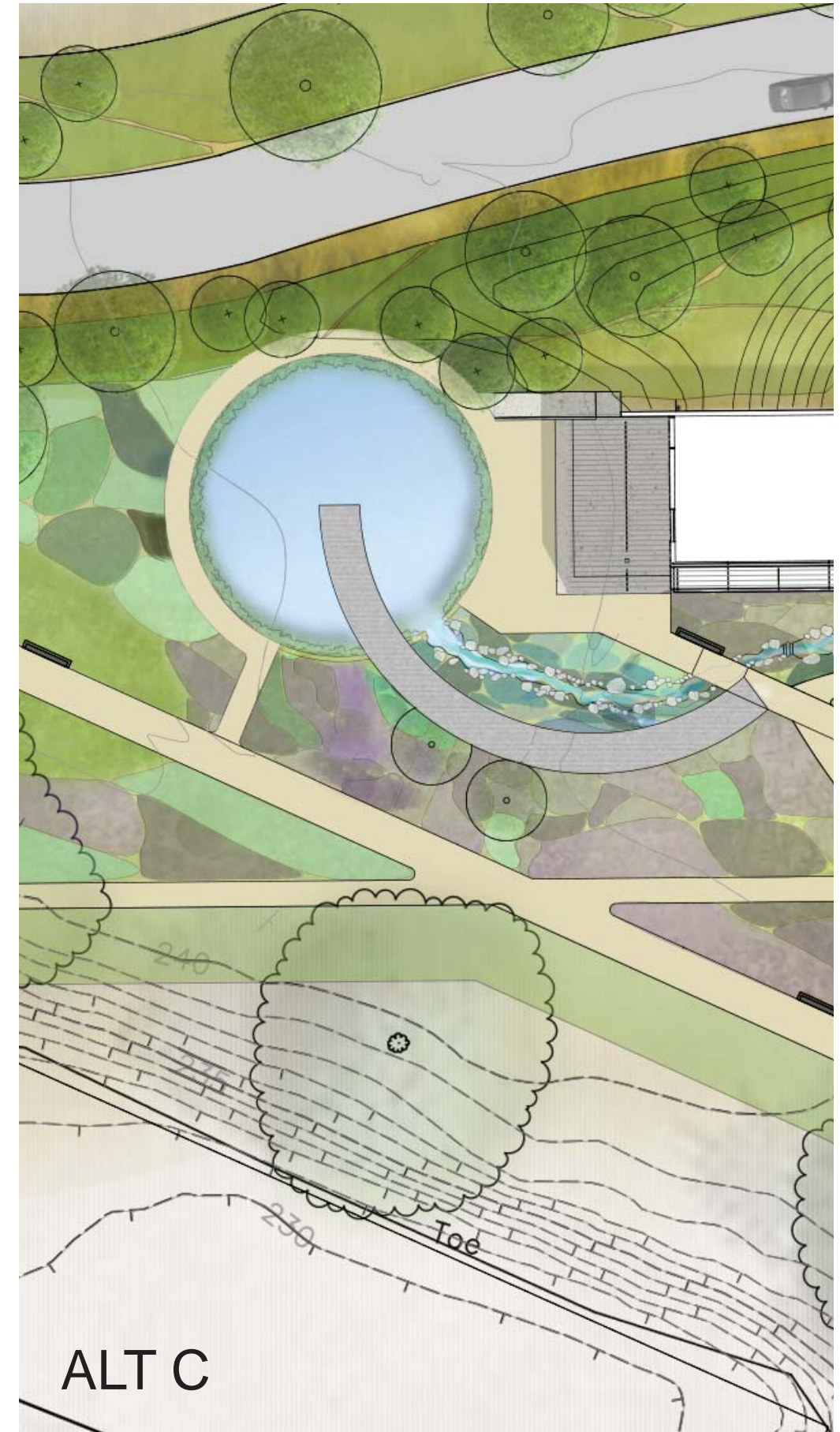
Informal Review October 2014



ALT A



ALT B



ALT C



# COMMENTS

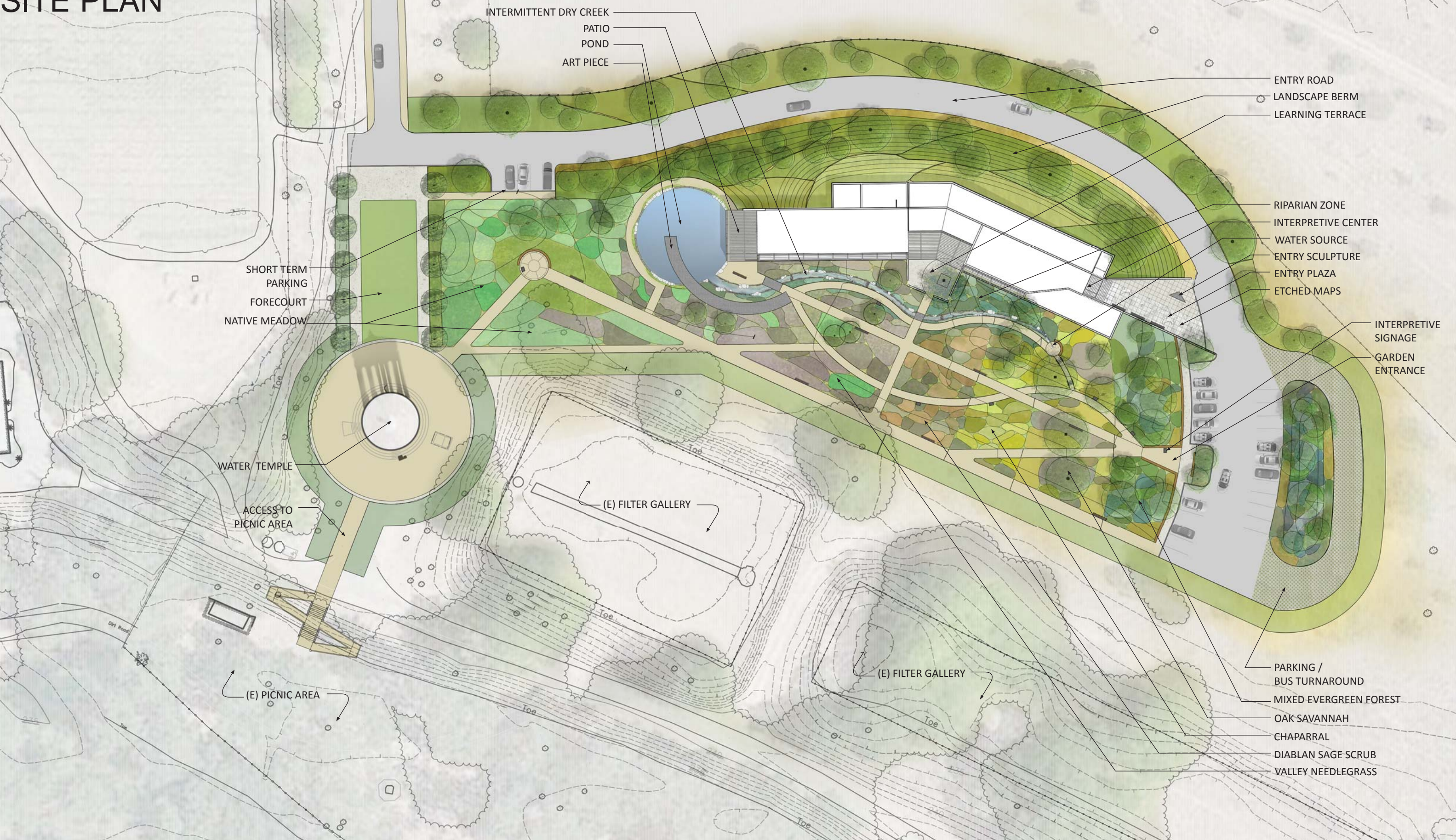
Informal Review October 2014

1. Preference for either a clearly organic or a clearly geometric pond design. Preference for tension created between placement of art piece and pond location.
2. Minimize lower pond access area coming up to terrace.
3. Provide details of pond edge, spring source, and stream profile (specifically how plantings and rocks interface).
4. Provide more clarity to the planting design changes (Oak Savannah).





# SITE PLAN



INTERMITTENT DRY CREEK  
 PATIO  
 POND  
 ART PIECE

ENTRY ROAD  
 LANDSCAPE BERM  
 LEARNING TERRACE

SHORT TERM  
 PARKING  
 FORECOURT  
 NATIVE MEADOW

RIPARIAN ZONE  
 INTERPRETIVE CENTER  
 WATER SOURCE  
 ENTRY SCULPTURE  
 ENTRY PLAZA  
 ETCHED MAPS

INTERPRETIVE  
 SIGNAGE  
 GARDEN  
 ENTRANCE

WATER TEMPLE  
 ACCESS TO  
 PICNIC AREA

(E) FILTER GALLERY

(E) FILTER GALLERY

(E) PICNIC AREA

PARKING /  
 BUS TURNAROUND  
 MIXED EVERGREEN FOREST  
 OAK SAVANNAH  
 CHAPARRAL  
 DIABLAN SAGE SCRUB  
 VALLEY NEEDLEGRASS



# PLANTING PLAN

## PLANTING PALETTE

### Trees

AC	Aesculus californica
AM	Acer macrophyllum
CO	Cercis occidentalis
CSS	Cornus sessilis var. sessilis
HA	Heteromeles arbutifolia
PR	Platanus racemosa
PS	Pinus sabiniana
PVD	Prunus virginiana demissa
QA	Quercus agrifolia
QB	Quercus berberidifolia
QD	Quercus douglasii
QL	Quercus lobata
QW	Quercus wizlenzii
SLA	Salix lasiolepis
SNC	Sambucus nigra ssp. caerulea

### Entry Road Groundcovers

E1	Arctostaphylos cruzensis
E2	Arctostaphylos 'John Dourley'
E3	Arctostaphylos Hookeri Franciscana
E4	Arctostaphylos 'Pacific Mist'
E5	Baccharis pilularis 'Pigeon Point'
E6	Ceanothus thyrsiflorus griseus 'Yankee Point'
E7	Agrostis pallens/ Carex praeegracilis/ Bouteloua gracilis

### Native Meadow

M1	Achillea millefolium
M2	Sisyrinchium bellum
M3	Argrostris pallens
M4	Artemisia douglasiana
M5	Epilobium canum subsp. Canum
M6	Solidago elongata
M7	Ranunculus californicus var. californicus
M8	Leymus triticoides
M9	Koeleria macrantha
R3	Rhamnus californica
R9	Juncus effusus subsp. pacificus

### Valley Needlegrass

G1	Nassella pulchra
G2	Lupinus formosus var. formosus
G3	Penstemon heterophyllus var. purdyi
G4	Eriogonum fasciculatum polifolium
G5	Sidalcea malviflora subsp. Laciniata
G6	Lupinus albifrons
G7	Eriophyllum confertiflorum var. confertiflorum
G8	Chlorogalum pomeridianum var. divaricatum

### Riparian

R1	Carex nudata
R2	Rosa californica
R3	Rhamnus californica
R4	Stachys rigida var. quercetorum
R5	Mimulus cardinalis
R6	Mimulus guttatus
R7	Lonicera hispidula
R8	Symphoricarpos albus var. laevigatus
R9	Juncus effusus subsp. pacificus
CCS	Cornus sericea subsp. sericea

### Diablan Sage Scrub

SS1	Artemisia californica
SS2	Salvia mellifera
SS3	Eriodictyon californicum
SS4	Mimulus aurantiacus
SS5	Eriogonum fasciculatum var. polifolium
SS6	Salvia apiana
G3	Penstemon heterophyllus var. purdyi
G6	Lupinus albifrons var. albifrons
G7	Eriophyllum confertiflorum var. confertiflorum

### Chaparral

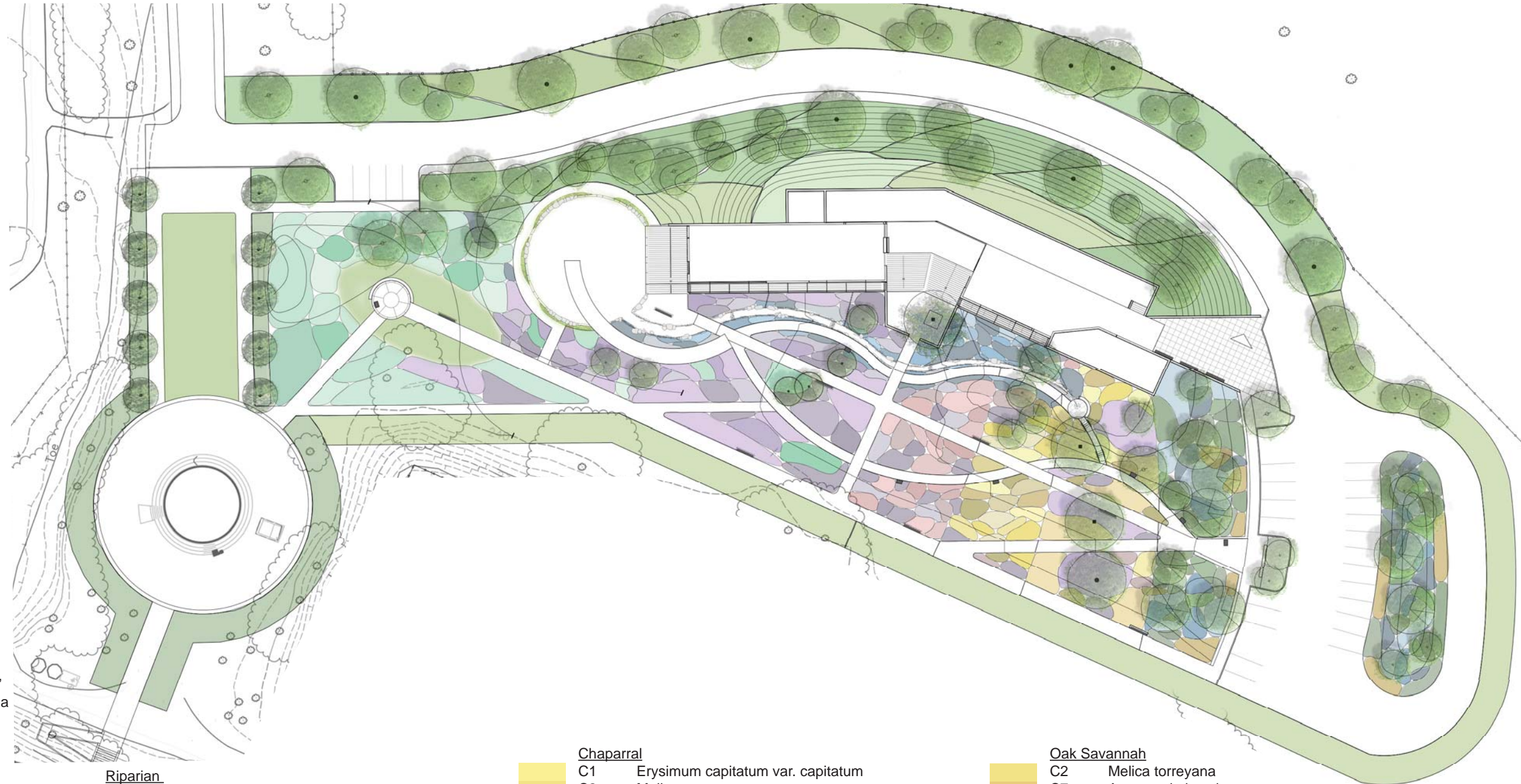
C1	Erysimum capitatum var. capitatum
C2	Melica torreyana
C3	Monardella villosa ssp. villosa
C4	Penstemon centranthifolius
C5	Silene laciniata subsp. Californica
C6	Adenostoma fasciculatum var. fasciculatum
C7	Arctostaphylos glauca
C8	Cercocarpus betuloides var. betuloides
C9	Rhamnus californica ssp. tomentella
C10	Lonicera subspicata
C11	Prunus illicifolia
C12	Rhamnus illicifolia
C13	Solanum umbelliferum
G3	Penstemon heterophyllus var. purdyi
G7	Eriophyllum confertiflorum var. confertiflorum
SS4	Mimulus aurantiacus

### Oak Savannah

C2	Melica torreyana
C7	Arctostaphylos glauca
C10	Lonicera subspicata
C11	Prunus illicifolia
C12	Rhamnus illicifolia
C13	Solanum umbelliferum
G1	Nassella pulchra
G3	Penstemon heterophyllus var. purdyi
OS1	Bromus carinatus var. carinatus
SS4	Mimulus aurantiacus

### Mixed Evergreen Forest

EF1	Aquilegia formosa
EF2	Satureja douglasii
EF3	Stachys rigida var. quercetorum
EF4	Thalictrum fendleri var. polycarpum
EF5	Physocarpus capitatus
EF6	Ribes sanguineum var. glutinosum
C12	Rhamnus illicifolia
R3	Rhamnus californica
R7	Lonicera hispidula
R8	Symphoricarpos albus var. laevigatus





# OAK SAVANNAH PLANT COMMUNITY

## BEFORE



**5,650 SF**  
Total 11 Oaks/ Savannah Tree Specimen

## AFTER



**6,725 SF**  
Total 5 Oaks



# BLUESTONE MATERIALS

## Irregular Slab Boulders

4-5' diameter x 6-12" height, volumetric, natural finish  
Used at stream profile and pond edging



## Pavers

3' x 3', cleft/fractured finish  
Used at entry plaza, stream source & terrace



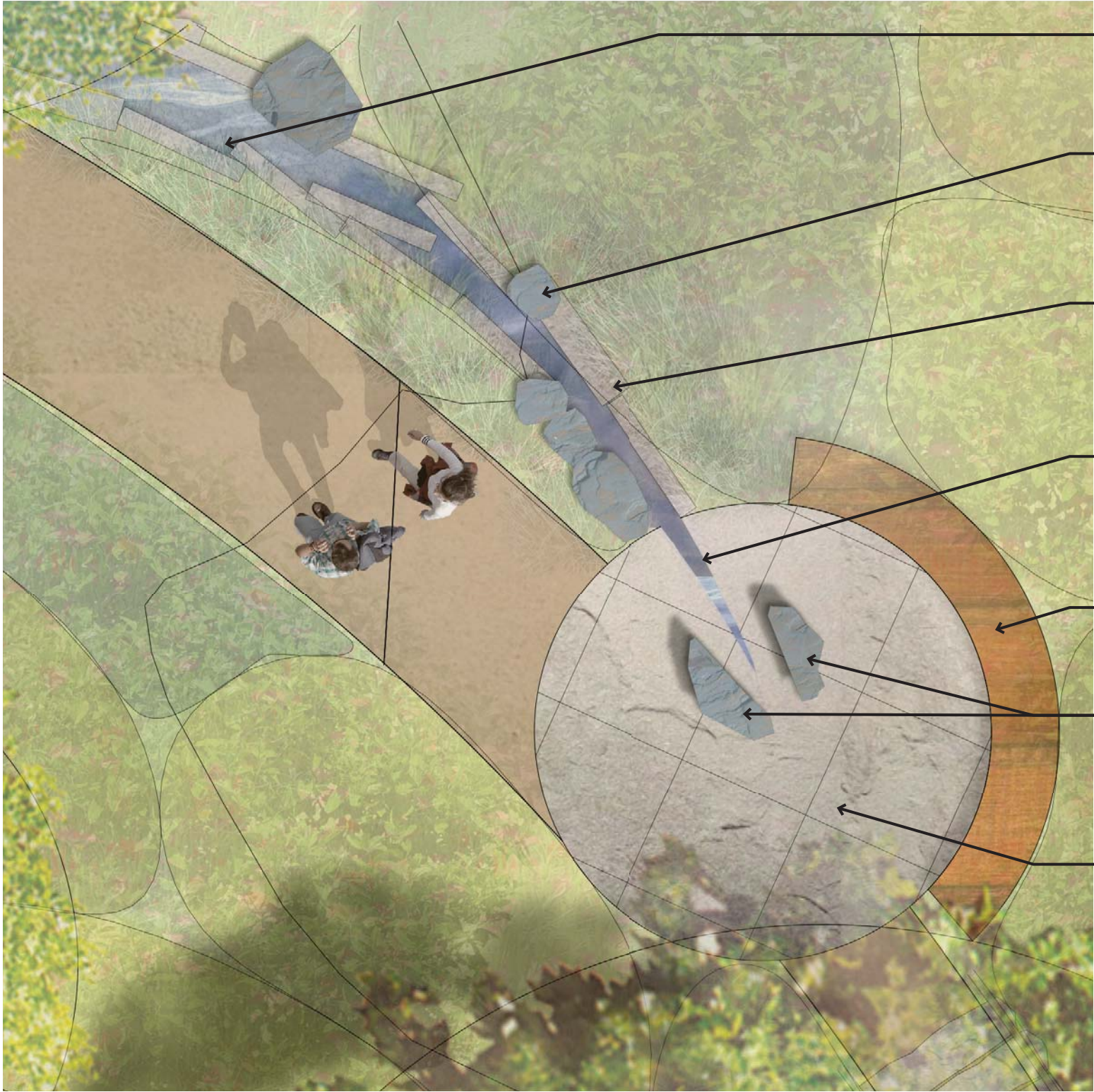
## Linear Stone Edging

Pond Edging: 4-6' length x 12" wide x 6" thick, cleft/fractured finish  
Stream Edging: 3-6' length x 3" wide x 12" tall, cleft/fractured finish





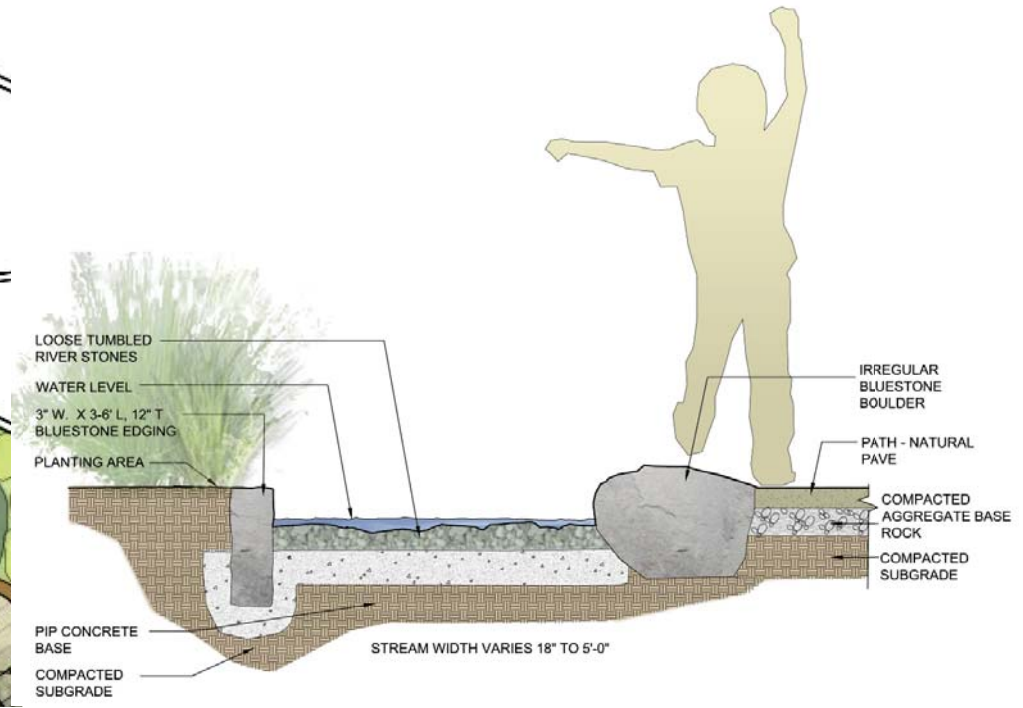
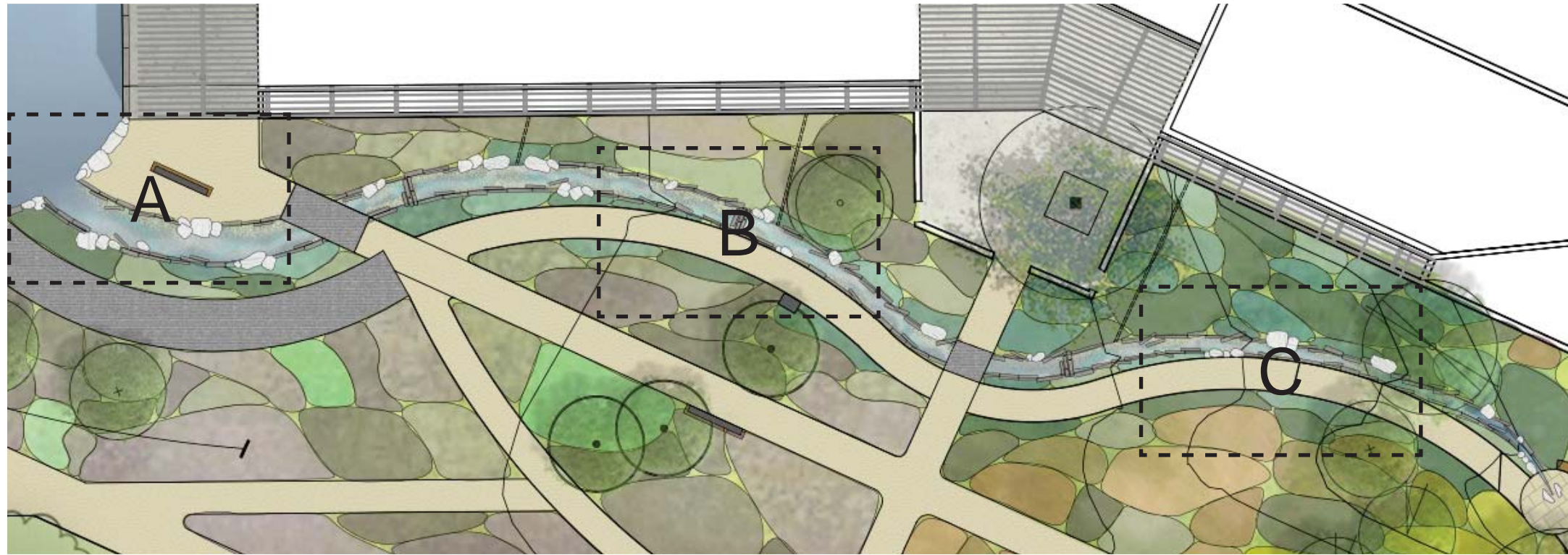
# SOURCE ENLARGEMENT



- LOOSE TUMBLED RIVER STONES
- 4-5' D. X 6-12" HT, IRREGULAR BLUESTONE SLAB BOULDERS
- 3-6' L. X 3" W. X 12" HT. LINEAR BLUESTONE EDGING
- SPLIT PAVERS REVEALING WATER SOURCE
- CONCRETE W/ WOOD WRAP SEATWALL
- 3' W. x 1' D. x 3' HT. SPLIT BLUESTONE BOULDERS
- 3-6' L. x 3" W. x 12" T. LINEAR BLUESTONE EDGING

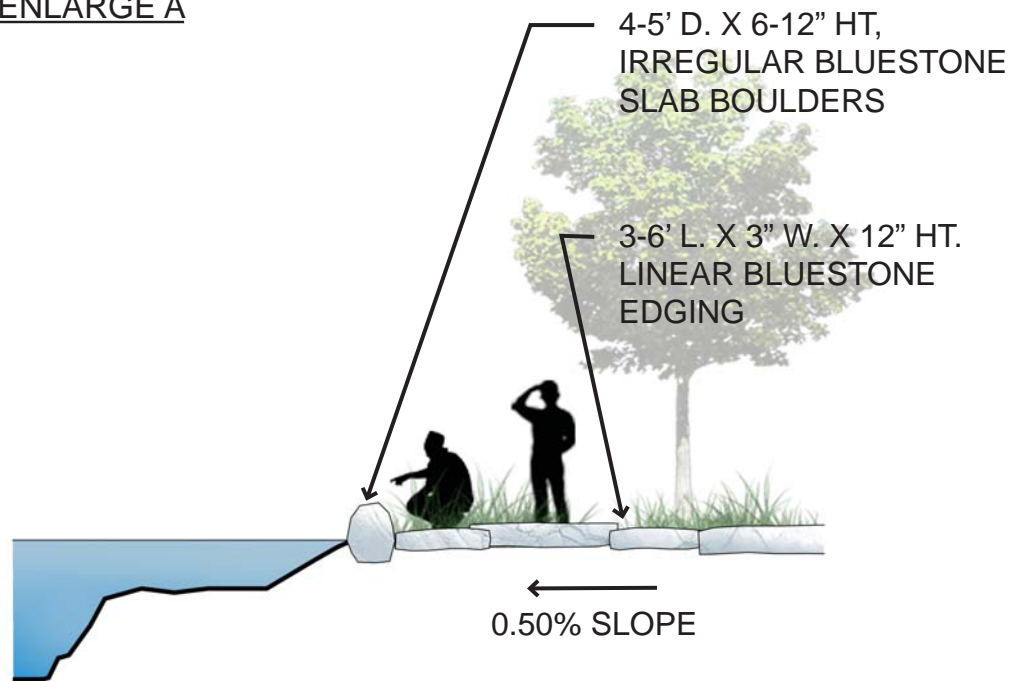


# STREAM PROFILE

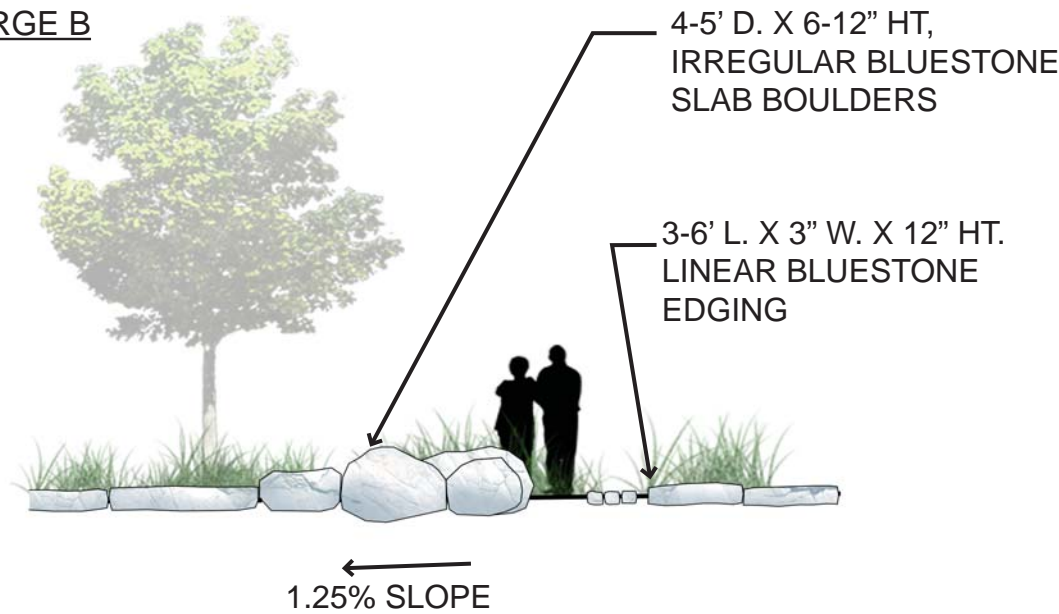


## LONGITUDINAL PROFILE

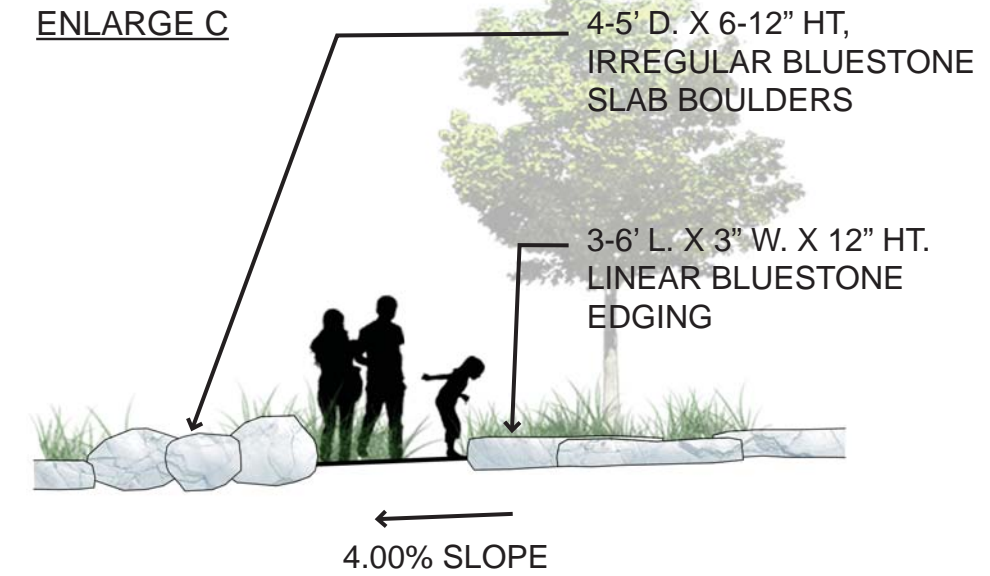
### ENLARGE A



### ENLARGE B



### ENLARGE C





# TEMPLE AREA MATERIALS



Staircase & Ramp to Picnic Area



Natural Pave



Forecourt Planting



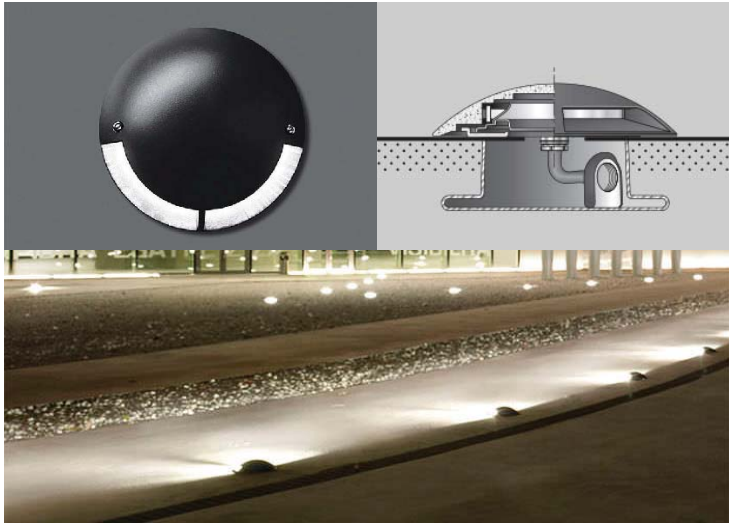
Forecourt Meadow



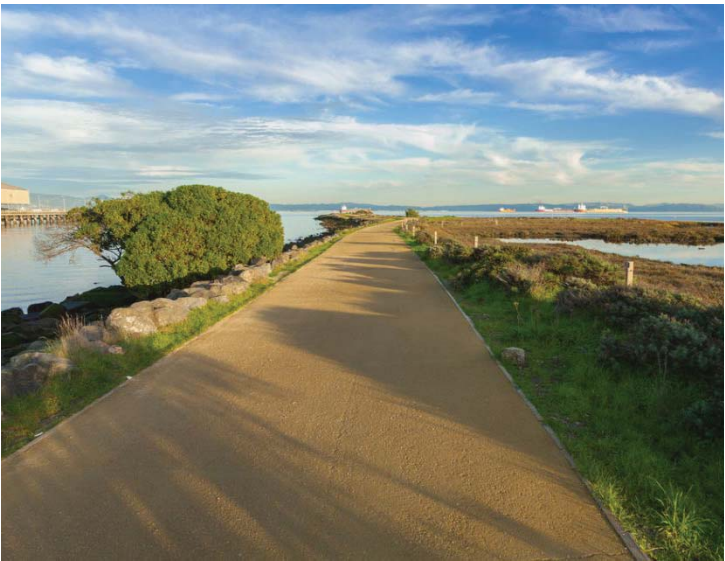
# GARDEN AREA MATERIALS



Linear Walls



Seating



Natural Pave



Lighting







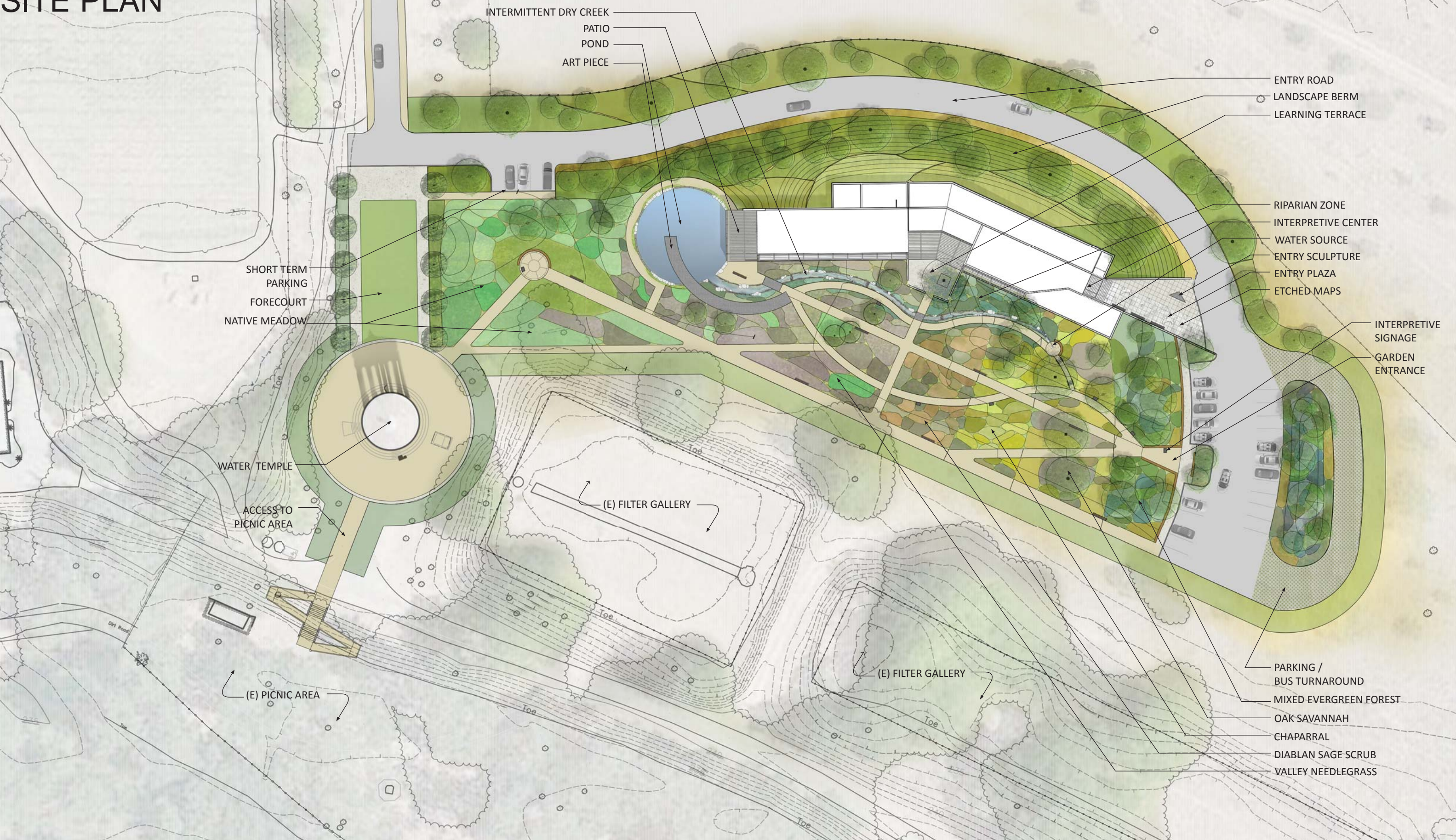








# SITE PLAN



INTERMITTENT DRY CREEK  
 PATIO  
 POND  
 ART PIECE

ENTRY ROAD  
 LANDSCAPE BERM  
 LEARNING TERRACE

SHORT TERM  
 PARKING  
 FORECOURT  
 NATIVE MEADOW

RIPARIAN ZONE  
 INTERPRETIVE CENTER  
 WATER SOURCE  
 ENTRY SCULPTURE  
 ENTRY PLAZA  
 ETCHED MAPS

INTERPRETIVE  
 SIGNAGE  
 GARDEN  
 ENTRANCE

WATER TEMPLE  
 ACCESS TO  
 PICNIC AREA

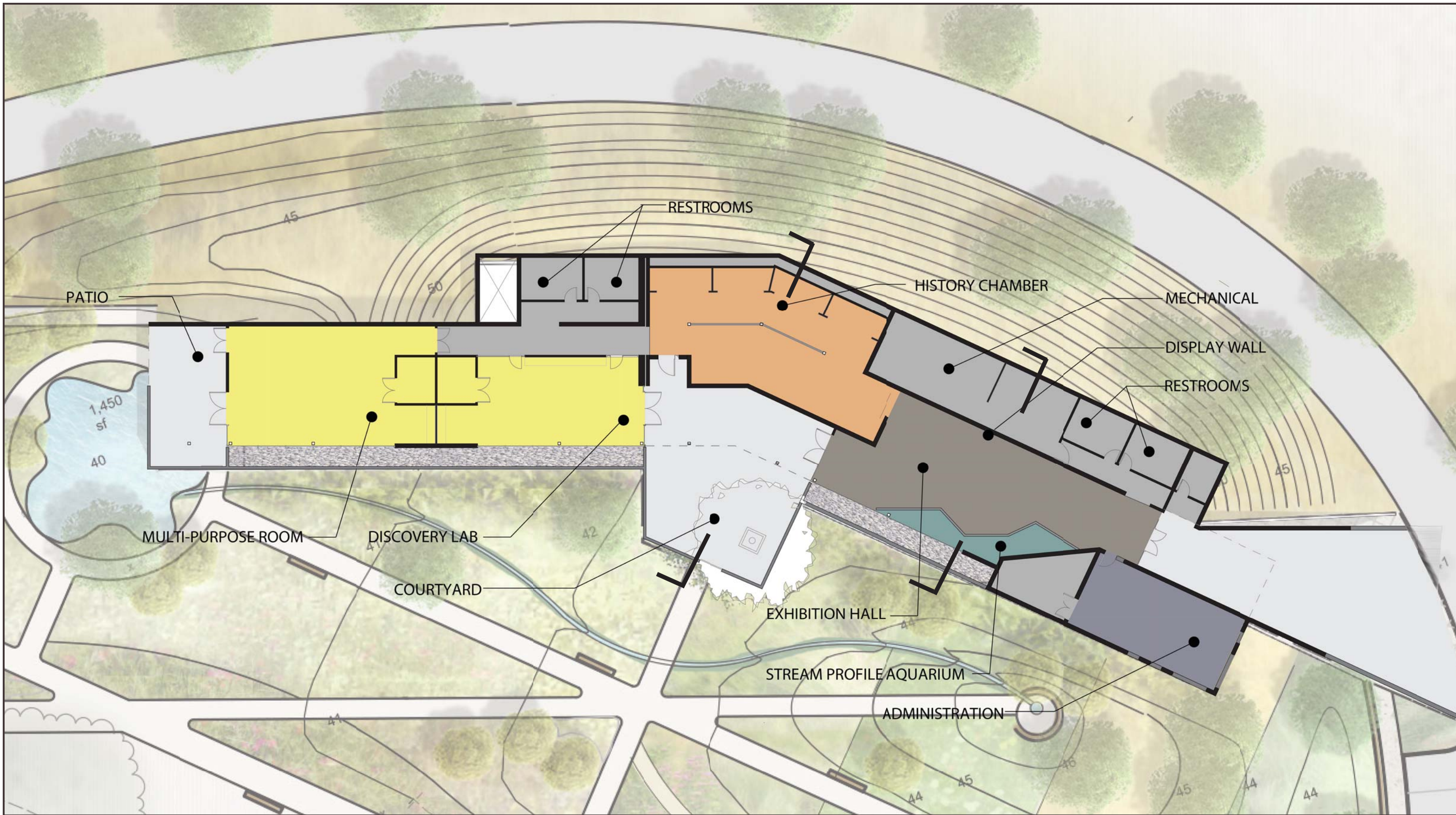
(E) FILTER GALLERY

(E) FILTER GALLERY

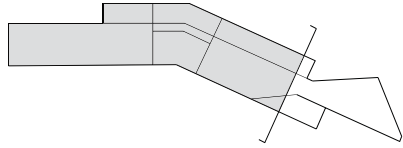
(E) PICNIC AREA

PARKING /  
 BUS TURNAROUND  
 MIXED EVERGREEN FOREST  
 OAK SAVANNAH  
 CHAPARRAL  
 DIABLAN SAGE SCRUB  
 VALLEY NEEDLEGRASS





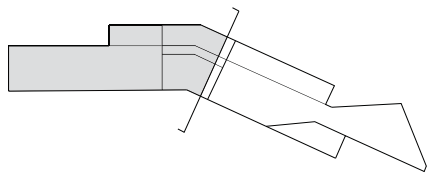
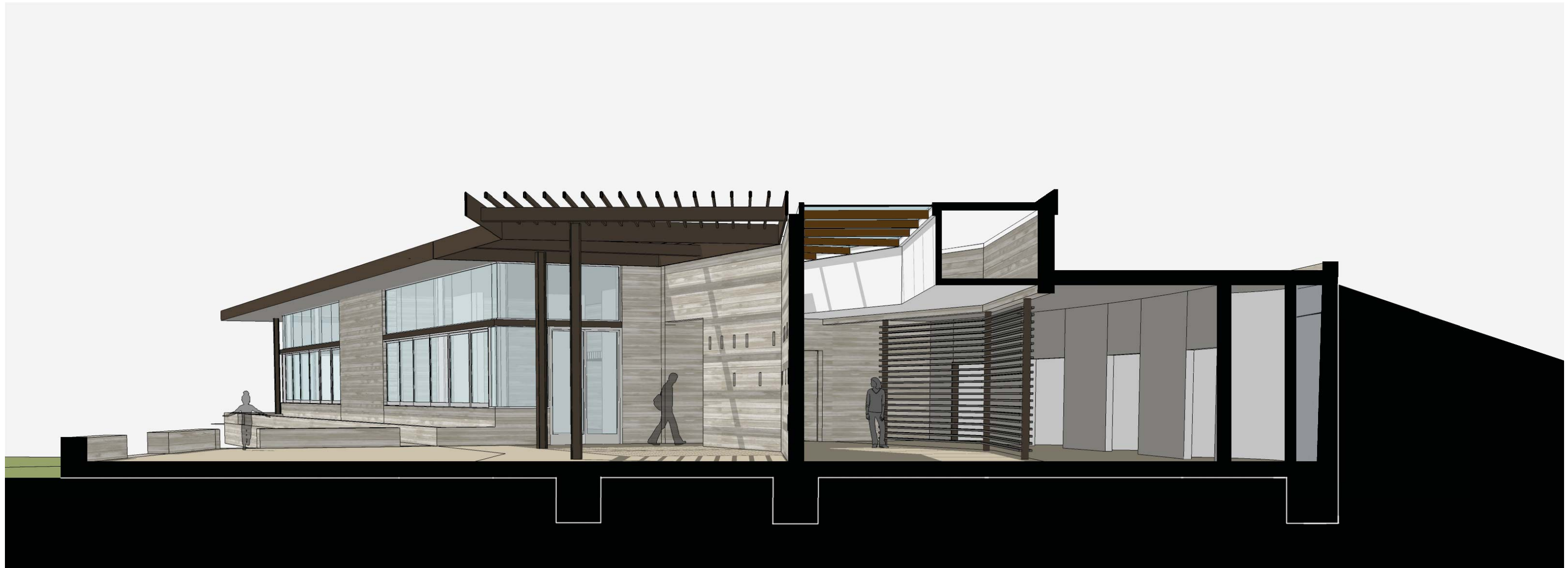








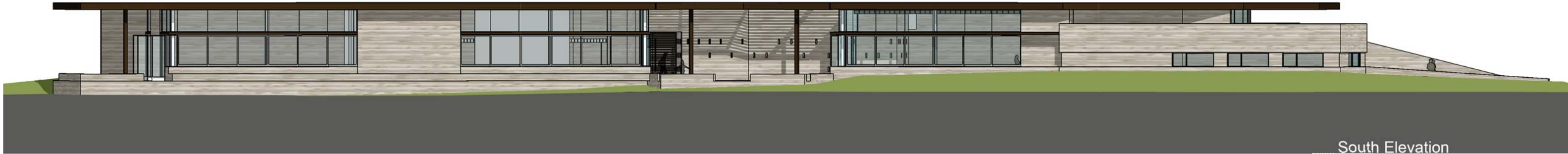




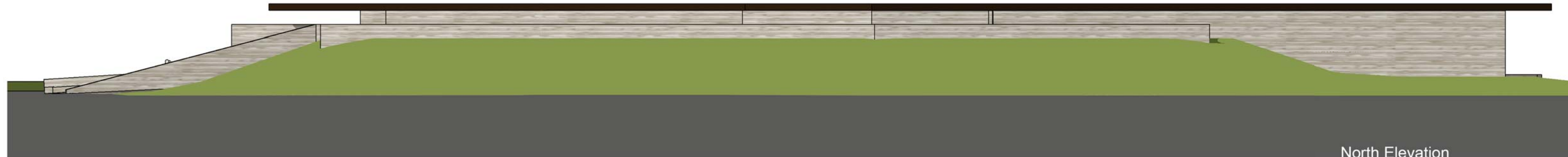








South Elevation



North Elevation











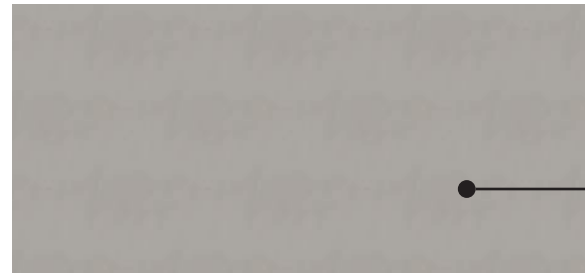








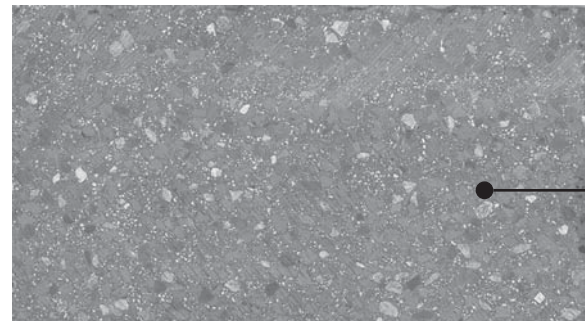
POWDER COAT ALUMINUM FASCIA/BEAM CLADDING  
(TEXTURED COR-TEN)



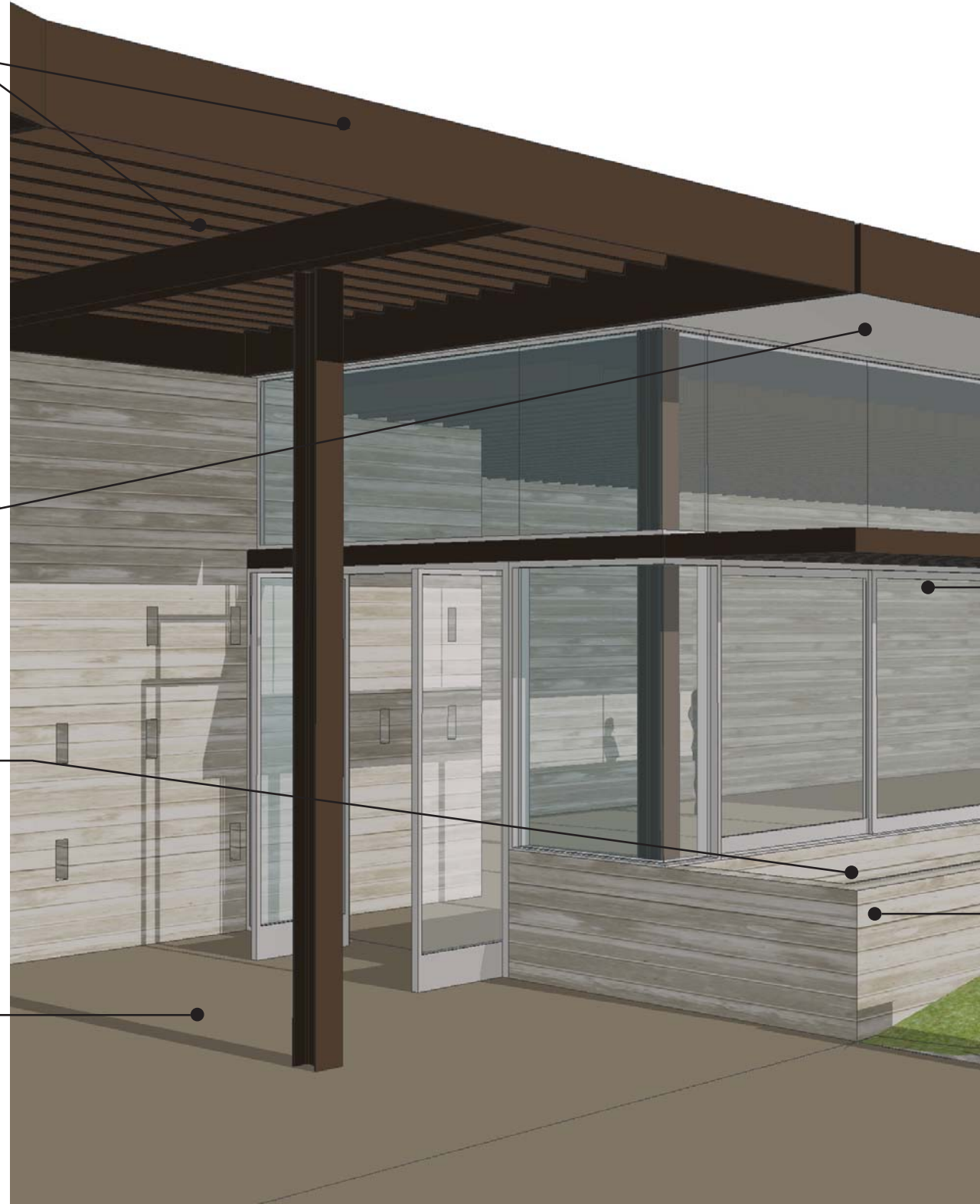
INTEGRAL COLOR CEMENT PLASTER SOFFIT



SITE QUARRIED ROCK & GRAVEL COBBLES



DIAMOND GROUND SEALED EXTERIOR CONCRETE



ANODIZED ALUMINUM MULTI-SLIDE WINDOW SYSTEM



BOARD FORMED CONCRETE W/ SITE QUARRIED AGGREGATE



