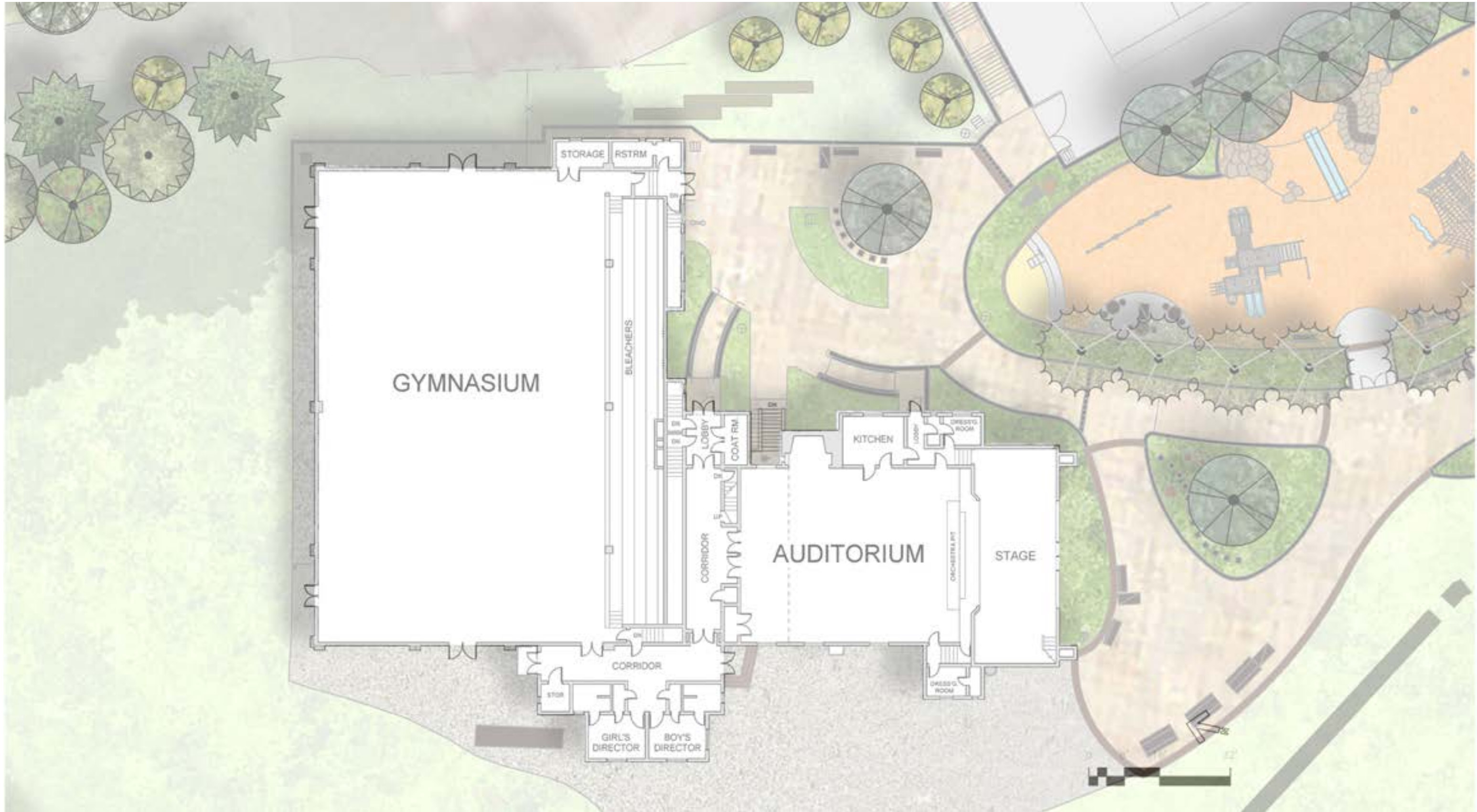


# **GLEN CANYON RECREATION CENTER**

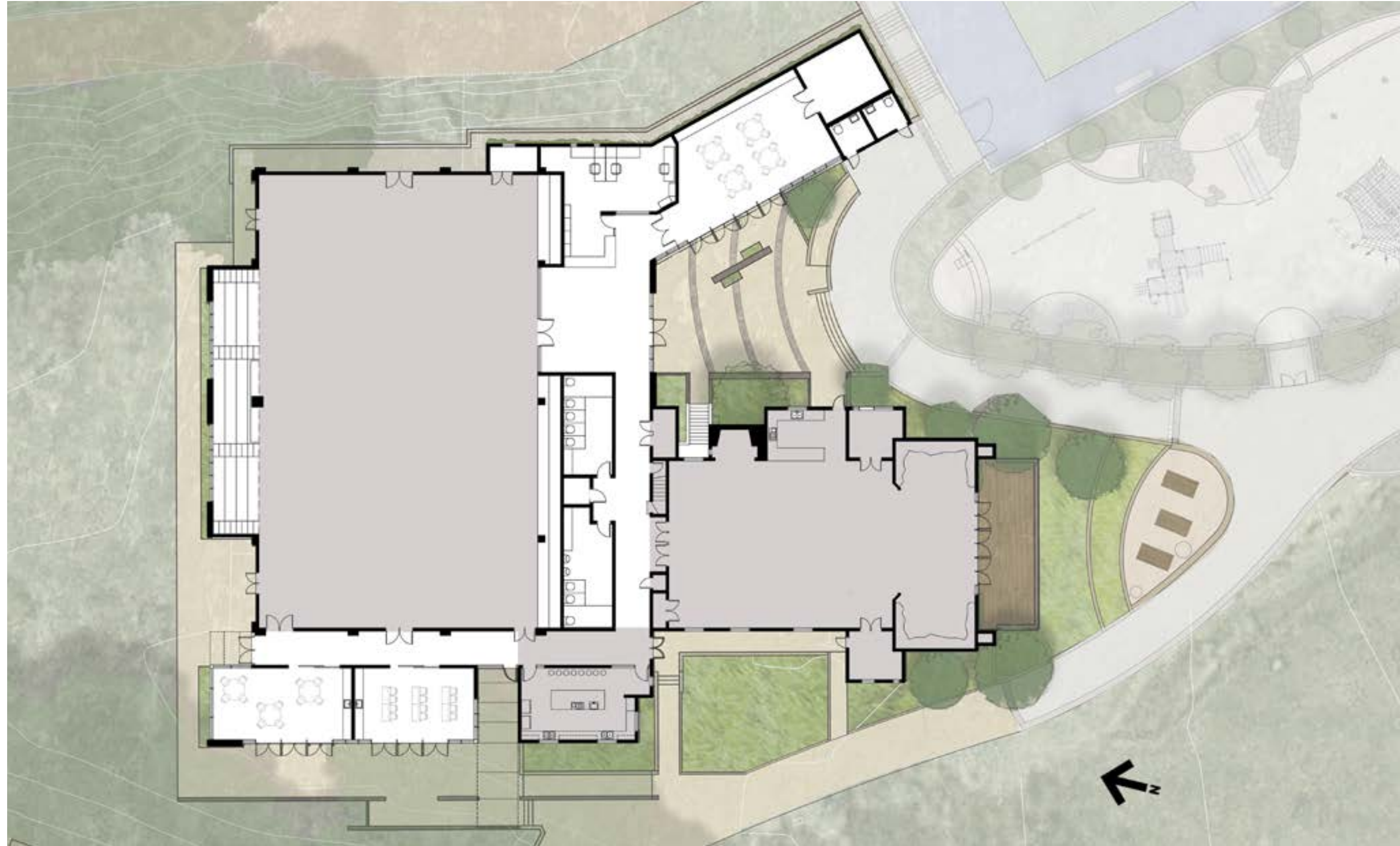
Civic Design Review Phase II  
October 2014



# EXISTING FLOOR PLAN



**FLOOR PLAN - PHASE I**  
**DECEMBER 2013**



**AERIAL PERSPECTIVE - PHASE I**  
**DECEMBER 2013**



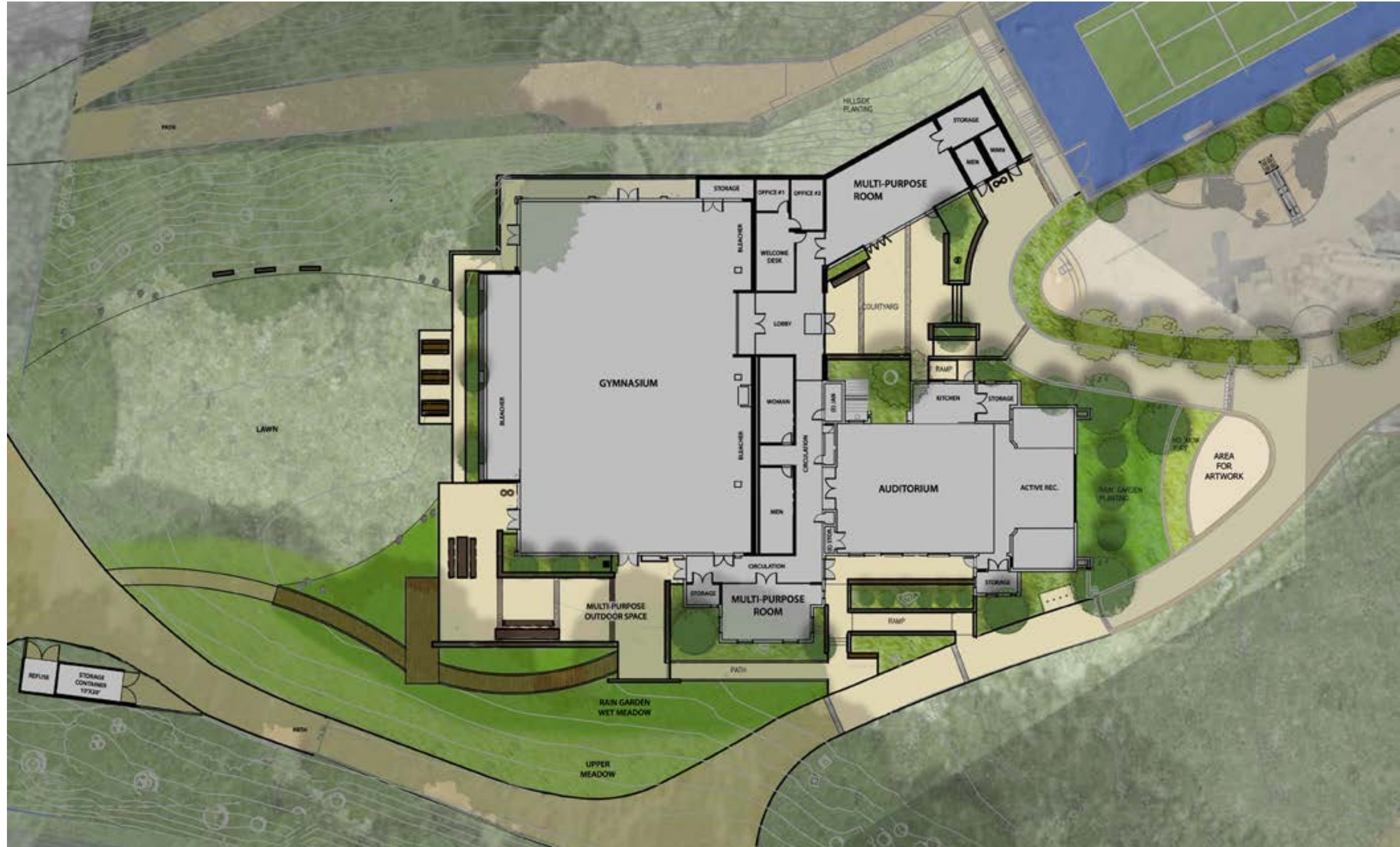
**NORTHWEST PERSPECTIVE - PHASE I**  
**DECEMBER 2013**



**SOUTHWEST PERSPECTIVE - PHASE 1**  
**DECEMBER 2013**



# SITE PLAN / FLOOR PLAN



# AERIAL PERSPECTIVE





# PERSPECTIVE FROM TRAIL



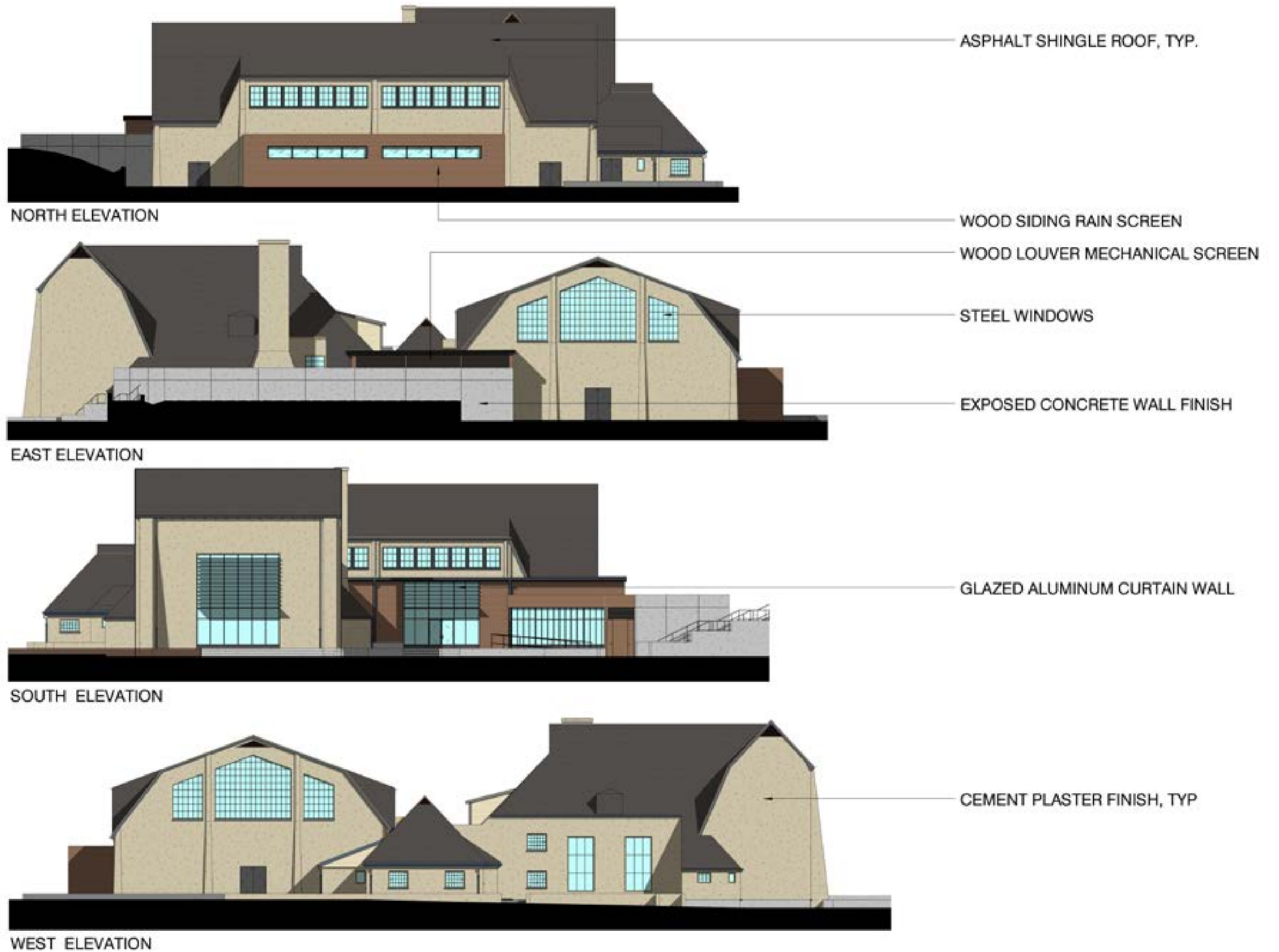
# NORTHWEST PERSPECTIVE



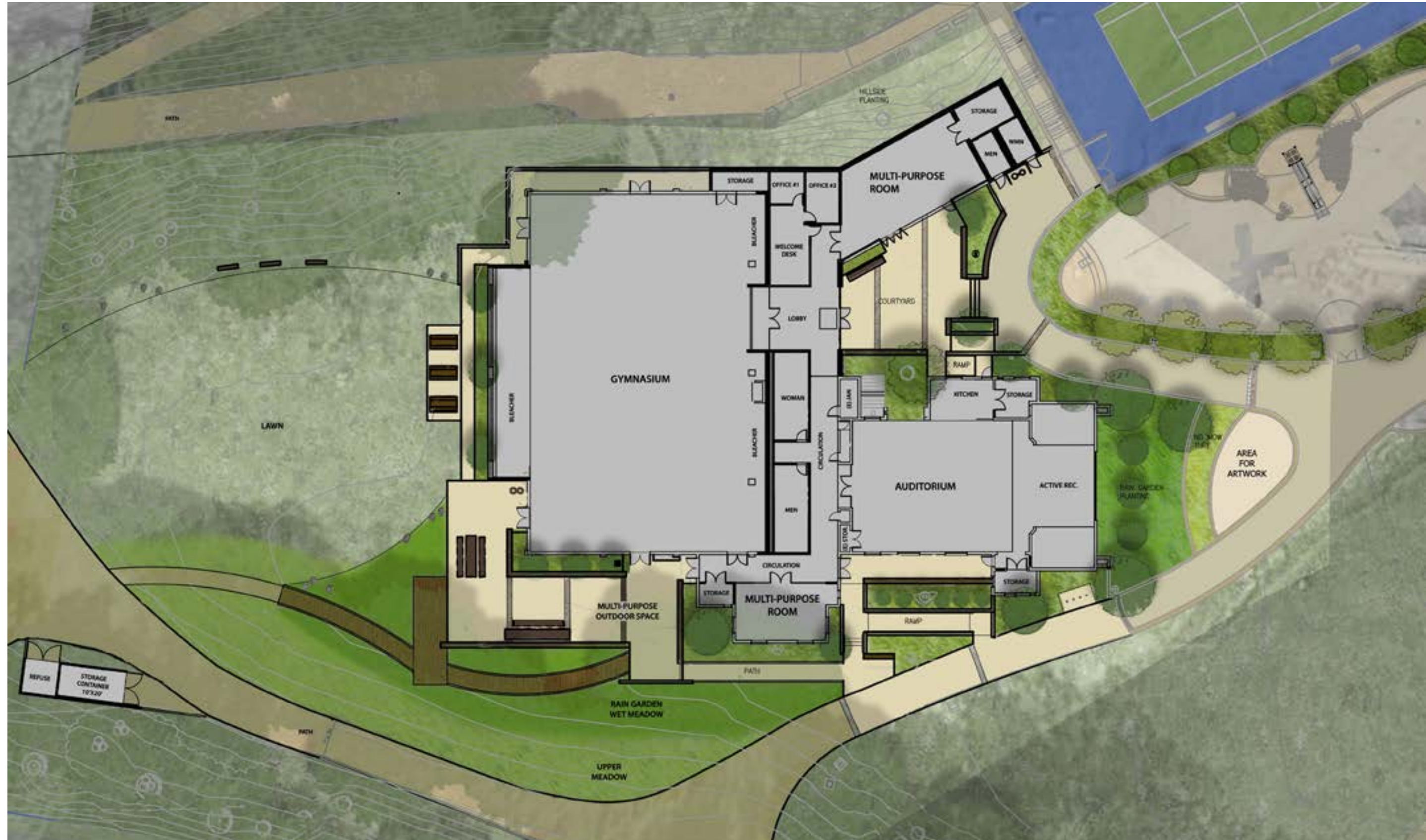
**SOUTHWEST PERSPECTIVE**



# EXTERIOR ELEVATIONS



# LANDSCAPE PLAN



# EXISTING CONDITIONS



Entry at Elk



Path to Building



Path to Courtyard



Courtyard



View from Alms Road



Fields and Terracing



Picnic Area and Playground



Path Leading to Elk



Path from Alms Road



Path from Alms Road



Gym and Office



Gym, Office, and Auditorium

# MATERIALS

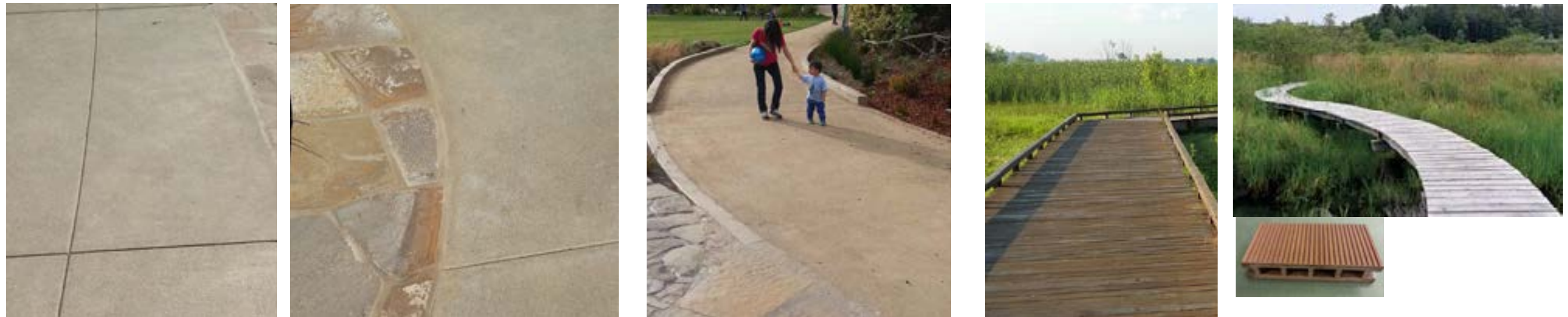
Benches



Tables



Paving



# MATERIALS

Lights



Handrails





# PLANTING

## Trees



**Cercis canadensis 'forest pansy'**  
Forest Pansy Eastern Redbud (25' H X 25' W)



**Cercis occidentalis**  
Western Redbud (25' H X 25' W)



**Cornus nuttallii**  
Pacific Dogwood (30' H X 20' W)



**Alnus rhombifolia**  
White Alder (40' H X 15' W)



**Chamaecyparis lawsoniana**  
Lawson Cypress (125' H x 25' W)



**Ulmus parvifolia**  
Evergreen Elm (50' H x 40' W)

## Shrubs



**Ribes sanguineum 'White Icicle'**  
White Icicle Flowering Currant (25' H X 25' W)



**Prunus ilicifolia (Pruned to shrub)**  
Catalina Cherry (20' H X 10' W)



**Dodonaea viscosa 'purpurea'**  
Hopbush (12' H X 8' W)



**Abutilon 'firefly'**  
Flowering Maple (8' H X 8' W)



**Ceanothus 'Julia Phelps'**  
Small Leaf Mountain Lilac (6' H X 6' W)



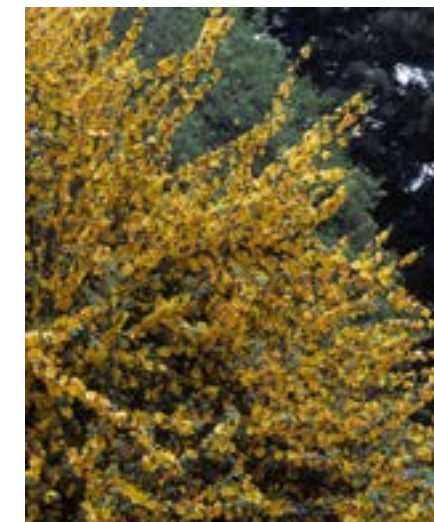
**Carpenteria californica**  
Bush Anemone (7' H X 5' W)



**Corylus cornuta**  
Beaked Hazelnut (6' H X 6' W)



**Garrya elliptica**  
Silk Tassel (9' H X 9' W)



**Fremontodendron californicum**  
California Flannel Bush (8' H X 8' W)



**Rhamnus californica**  
Coffeeberry (6' H X 6' W)

# PLANTING

## Vines



Bougainvillea 'San Diego Red'



Macfadyena unguis-cati  
Cats Claw (3' H X 3' W)



Pandorea jasminoides 'Alba'  
White Bower Vine (3' H X 3' W)

## Perennials



Protea eximia  
Rose-spoon Protea (8' H X 3' W)



Leucadendron  
Leucadendron (10' H X 6' W)



Achillea 'moonshine'  
Yarrow (2' H X 1' W)



Anigozanthos 'big red'  
Red Kangaroo Paw (5' H x 3' W)



Phormium 'cream delight'  
New Zealand Flax (3' H X 3' W)



Phormium 'dusky chief'  
New Zealand Flax (6' H X 4' W)

## Grasses/ Ferns



Stipa arundinacea  
New Zealand Wind Grass (3' H X 3' W)



Chondropetalum tectorum  
Small Cape Rush (3' H X 4' W)



Helictotrichon sempervirens  
Blue Oat Grass (3' H X 3' W)



Carex 'Bronze'  
Bronze Sedge Grass (1' H X 2' W)



Polystichum munitum  
Western Sword Fern (2' H X 3' W)

# PLANTING

## Upper Meadow



No-Mow Fescue



No-Mow Fescue



*Calamagrostis nutkaensis*  
Pacific Reedgrass (3'H X 4'W)



*Stipa arundinacea*  
New Zealand Wind Grass (3'H X 3'W)



*Muhlenbergia rigens*  
Deer Grass (4'H X 5'W)



*Panicum virgatum* 'Heavy Metal'  
Heavy Metal Blue Switch Grass (3'H X 2'W)



*Rudbeckia fulgida*  
Black-Eyed Susan (2'H X 2'W)



*Deschampsia cespitosa*  
Tufted Hair Grass (3'H X 4'W)



*Chondropetalum tectorum*  
Small Cape Rush (3'H X 4'W)



*Achillea* 'moonshine'  
Yarrow (2'H X 1'W)

## Lower Meadow



*Libertia peregrinans*  
*Libertia peregrinans* (2'H X 4'W)



*Carex tumulicola* and *Carex spissa*



*Juncus patens*  
Common Rush (2'H X 1'W)



*Lobelia cardinalis*  
Common Rush (2'H X 1'W)

# PLANTING

## Rain Garden



*Muhlenbergia rigens*  
Deer Grass (4' H X 5' W)



*Festuca californica*  
California Fescue (2' H X 2' W)



*Stipa arundinacea*  
New Zealand Wind Grass (3' H X 3' W)



*Juncus patens*  
Common Rush (2' H X 1' W)



*Armeria maritima*  
Sea Thrift (2' H X 4' W)



*Eschscholzia californica*  
California Poppy (1' H X 1' W)



*Mimulus aurantiacus*  
Monkeyflower (2' H X 3' W)



*Epilobium canum* spp. *canum*  
California Fuchsia (1' H X 4' W)



*Salvia spathacea*  
Hummingbird Sage (1' H X 3' W)



*Lupinus albilfrons*  
Silverbush Lupine (3' H X 5' W)



*Sisyrinchium bellum*  
Blue-Eyed Grass (2' H X 1' W)



*Ribes sanguineum* 'White Icicle'  
White Icicle Flowering Currant (25' H X 25' W)



*Rhamnus californica*  
Coffeeberry (6' H X 6' W)



*Ceanothus* 'Julia Phelps'  
Small Leaf Mountain Lilac (6' H X 6' W)



*Fragaria vesca*  
Mountain strawberry (0.5' H X 3' W)

# SITE PLAN

