



**GUY PLACE MINI PARK  
PUBLIC ART SELECTION PANEL**

**MEETING 2 SUMMARY**

**MEETING DATE:**

August 11, 2014

**VOTING SELECTION PANELISTS:**

Jeanne Gerrity, Independent Curator  
Stephanie Hanor, Director, Mills College Art Museum  
Katina Johnson, Community Representative  
Dorka Keehn, Arts Commissioner  
Marvin Yee, Landscape Architect, Recreation and Parks Department

**PROCESS**

The following artists presented an overview of their practice and proposals for the Guy Place Mini Park Public Art Project:

Jenny E. Balisle  
Adriane Colburn  
Bovey Lee

Presentations were followed by discussion and voting.

**VOTING CRITERIA**

The panelists were asked to rank each of the artists and artwork proposals 1, 2, or 3 (1=highest rank) taking into consideration the following criteria:

- Aesthetic quality
- Appropriateness of the proposed artwork for the site and project goals

**RESULTS OF VOTING TALLY**

Adriane Colburn	7
Jenny E. Balisle	8
Bovey Lee	15

**ARTS COMMISSION APPROVAL**

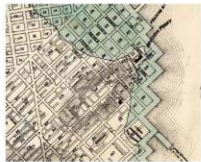
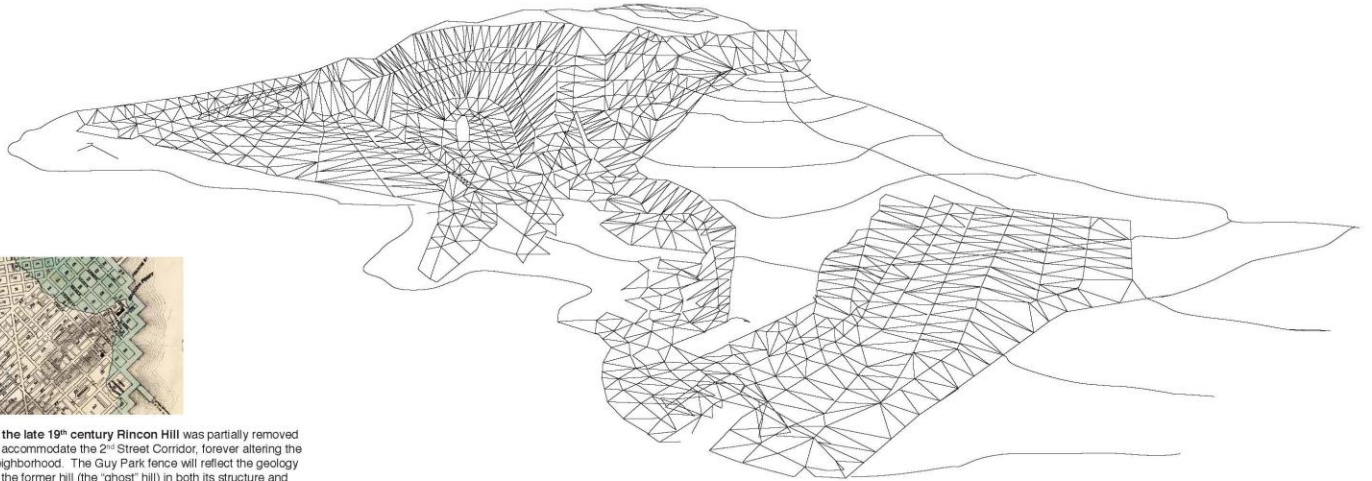
Motion to approve the selected artist Adriane Colburn and her proposal for Guy Place Mini Park as recommended by the Guy Place Mini Park Public Art Project Selection Panel.

Motion to authorize the Director of Cultural Affairs to enter into contract with Adriane Colburn for an amount not to exceed \$16,000 for design of artwork imagery for integration into the fence panels at Guy Place Mini Park.

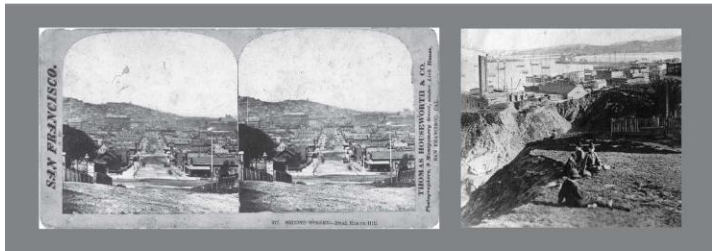
# GEOLOGIC GHOST

## GUY PLACE MINI PARK

ADRIANE COLBURN



In the late 19<sup>th</sup> century Rincon Hill was partially removed to accommodate the 2<sup>nd</sup> Street Corridor, forever altering the neighborhood. The Guy Park fence will reflect the geology of the former hill (the "ghost" hill) in both its structure and through the geologic and geographic imagery on the face of the panels.

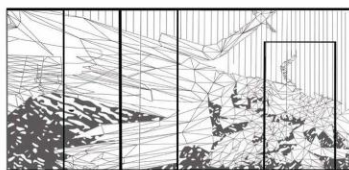


Geologic Ghost fence consists of panels made from waterjet cut steel. The panels will span the 50' street frontage of Guy Place Mini Park and will rise to 8' high. Within this will be two gates- one to access the passageway next to the adjacent building and a double gate that will act as the entryway into the park itself. The artwork will create a dynamic barrier between the park and the street, containing the garden and restricting entry during closed hours while simultaneously inviting the public to engage with the natural environment of Guy Place. Through a dynamic structure and intricate motifs the fence will draw attention to this new green space, illuminating it as a highlight of the neighborhood.

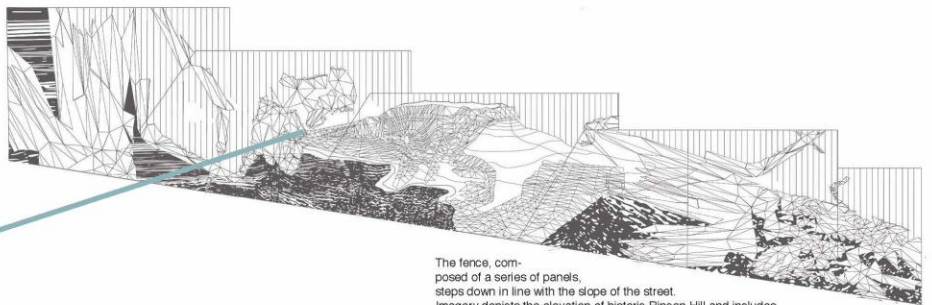
A series of panels that step down along the incline of the street will allow the fence to remain 8' above the sidewalk as the street descends. Its form will suggest a series of hills reminiscent of the city's natural landscape and Rincon Hill's topography.

The fence itself will be comprised of a waterjet cut design inspired by the historic and contemporary geologic record of the neighborhood. These images will be composed from topographic, geologic and triangulated maps, created through a collaboration between the artist and local geologists and cartographers.

The combination of the natural contours of the local landscape with the geometric structures of maps will create meditative and abstract patterns, creating a unique park entryway. In addition, the fence will be visually permeable so that, despite its height and security function, it will remain inviting and open to the neighborhood at large.

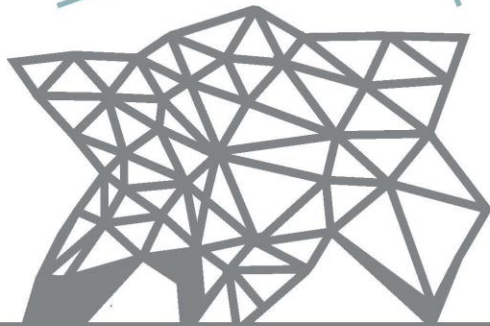


The park entrance gates and door to a side passageway will be subtly integrated into the fence, allowing the pattern to sweep across the entire span of the park front.



The fence, composed of a series of panels, steps down in line with the slope of the street. Imagery depicts the elevation of historic Rincon Hill and includes patterns derived from geologic maps and images. The artist will work in collaboration with local geologists and historians.

Grey areas and lines are solid steel. White areas are cut out sections. All cut outs are not to be open in excess of 4 inches.



### GEOLOGIC MAPS AND IMAGERY OF RINCON HILL

