

EARTHQUAKE SAFETY and
EMERGENCY RESPONSE (ESER) BOND 1
Neighborhood Fire Stations

Fire Station No. 5
**Civic Design Review
Phase I**



FIRE STATION No. 5

Earthquake Safety and Emergency Response (ESER) 1

\$412.3M General Obligation Bond Authorized in June 2010 with approval by 79.4% of voters

- Neighborhood Fire Stations \$65.1
- Auxiliary Water Supply System \$104.2
- Public Safety Building (includes Mission Bay Fire Station #4) \$243.0

Additional Funding added to NFS FY 2012-13 \$8.129

Total Neighborhood Fire Stations Funding \$73.229

FIRE STATION No. 5

Earthquake Safety and Emergency Response (ESER) 1

Focused Scope Program

- Correct severe deficiencies of selected building components
- Assure station functionality for 8-10 years

Comprehensive Renovation Program

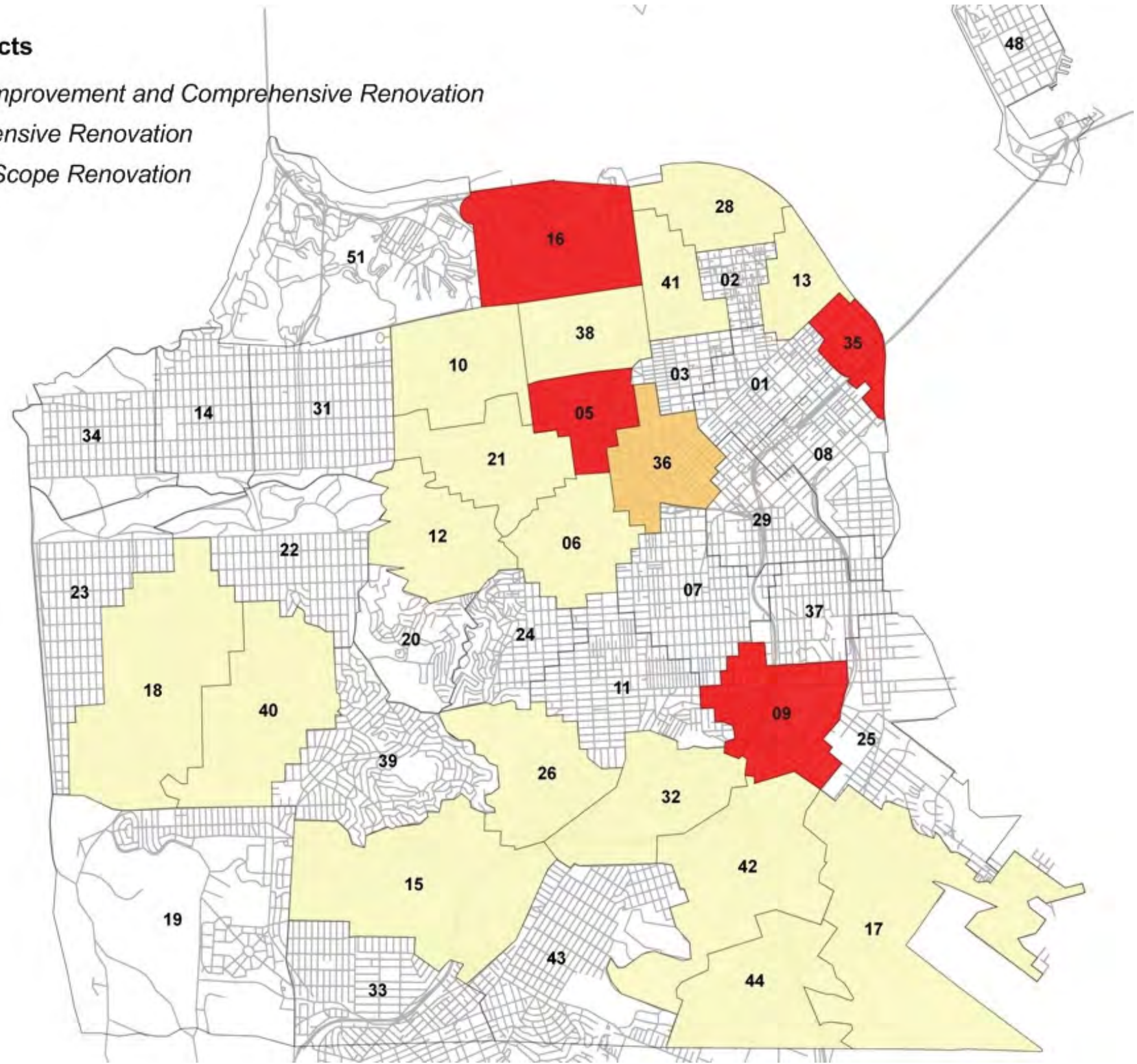
- Correct all deficiencies pertaining to emergency response and health and safety issues
- Renovate, renew, or replace major building systems to assure station functionality of at least 15 years

Seismic Improvement Program

- Improve seismic performance to conform with current building codes
- Complete a comprehensive renovation as described above

Fire Station Projects

- Seismic Improvement and Comprehensive Renovation*
- Comprehensive Renovation*
- Focused Scope Renovation*



FIRE STATION No. 5

- Historic Evaluation
- City Planning Status
- SFAC Public Art Program Status -
- Civic Design Review
- Total Project Budget: \$13.8M -



ESER 2010 NFS Excerpt 2013-2017

ActivityName	2013				2014				2015				2016				2017				2018				2019							
	Q1	Q2	Q3	Q4	Q1	Q2	Q3	Q4	Q1	Q2	Q3	Q4	Q1	Q2	Q3	Q4	Q1	Q2	Q3	Q4	Q1	Q2	Q3	Q4	Q1	Q2	Q3	Q4				
ESER 1 NFS Excerpt 2013 - 2016 (NAP)																																
Station Closures Summary																																
Station 44 - Unoccupied				10-31-13 A				07-10-14																								
Station 36 - Unoccupied				11-04-13 A				11-14-14																								
Station 16 - Unoccupied								02-27-15				05-13-16																				
Station 5 - Unoccupied												05-26-16				10-09-17																

Fire Station 5 History -

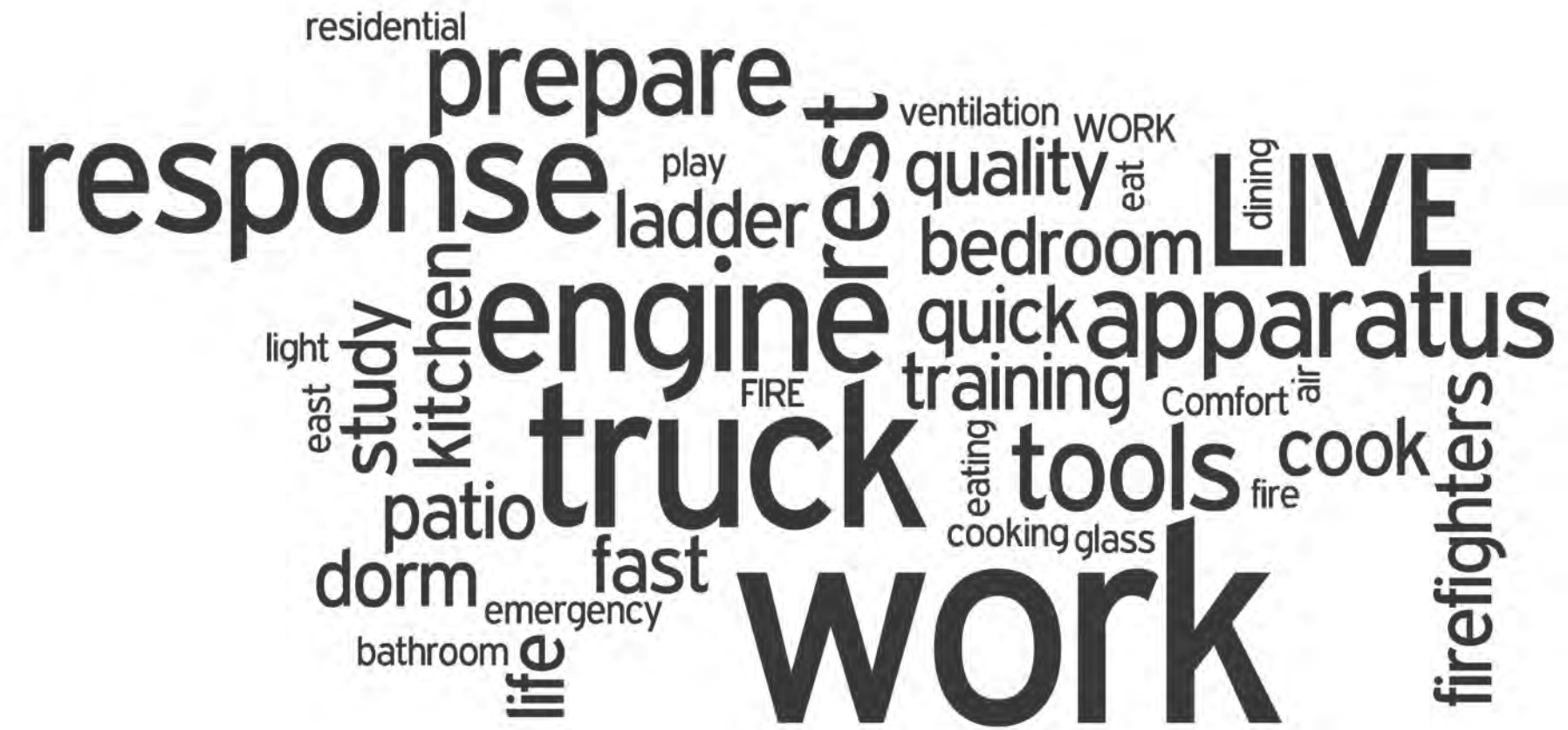


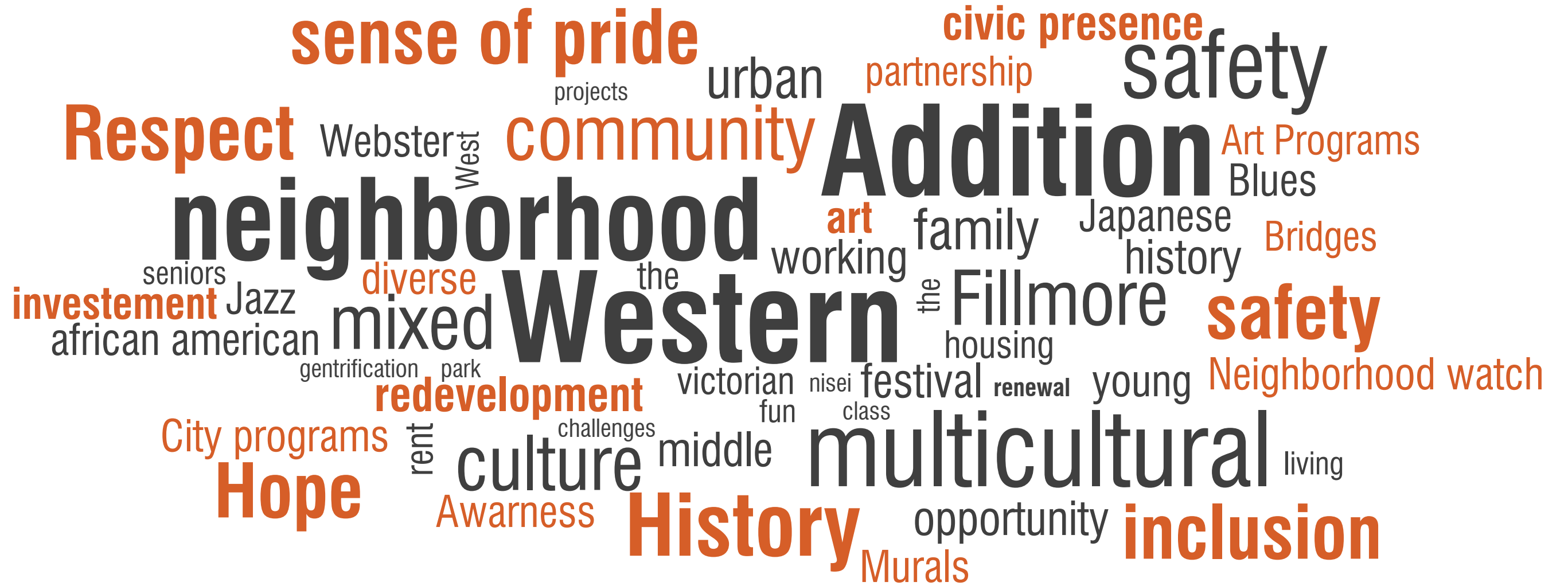
1956
Built

Interior renovations &
ADA upgrades
1993



2014
Present

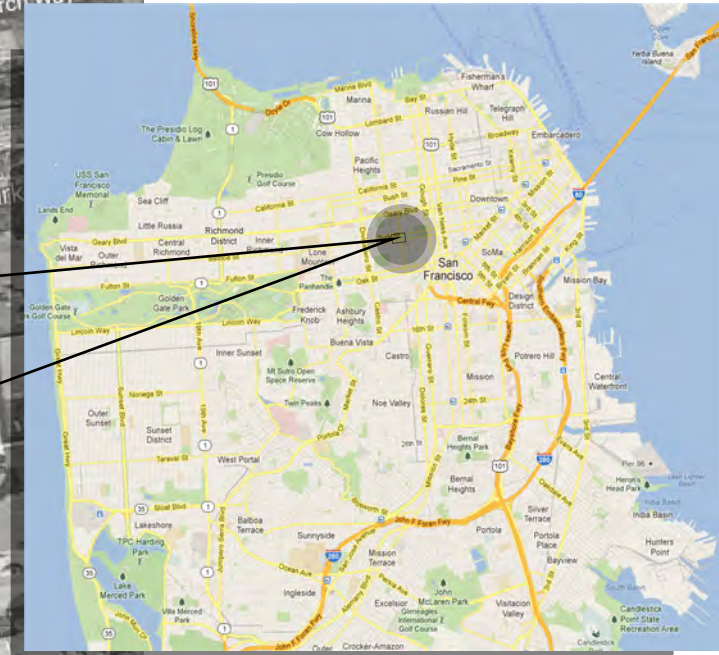
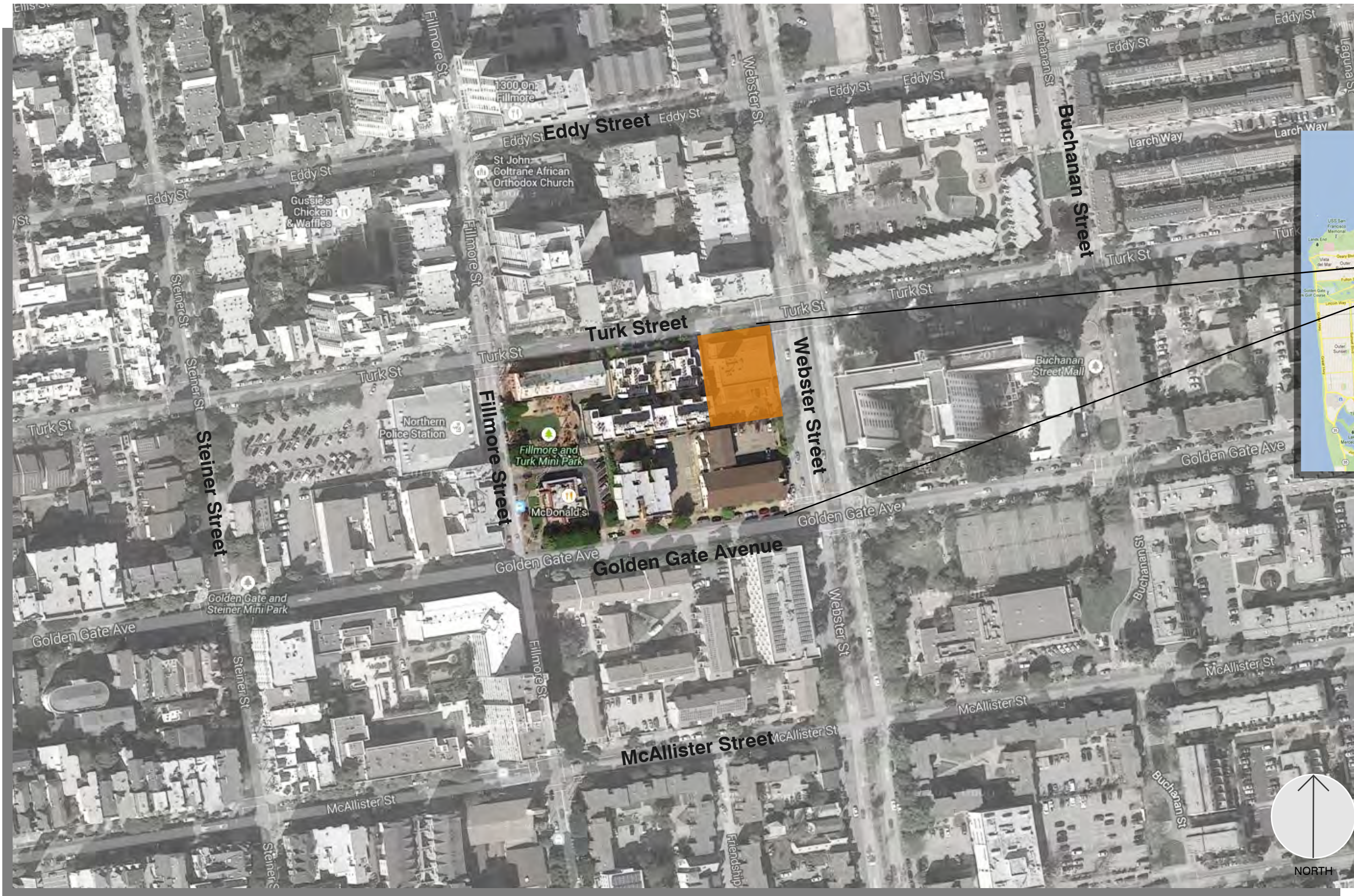




Neighborhood Context - Western Addition -



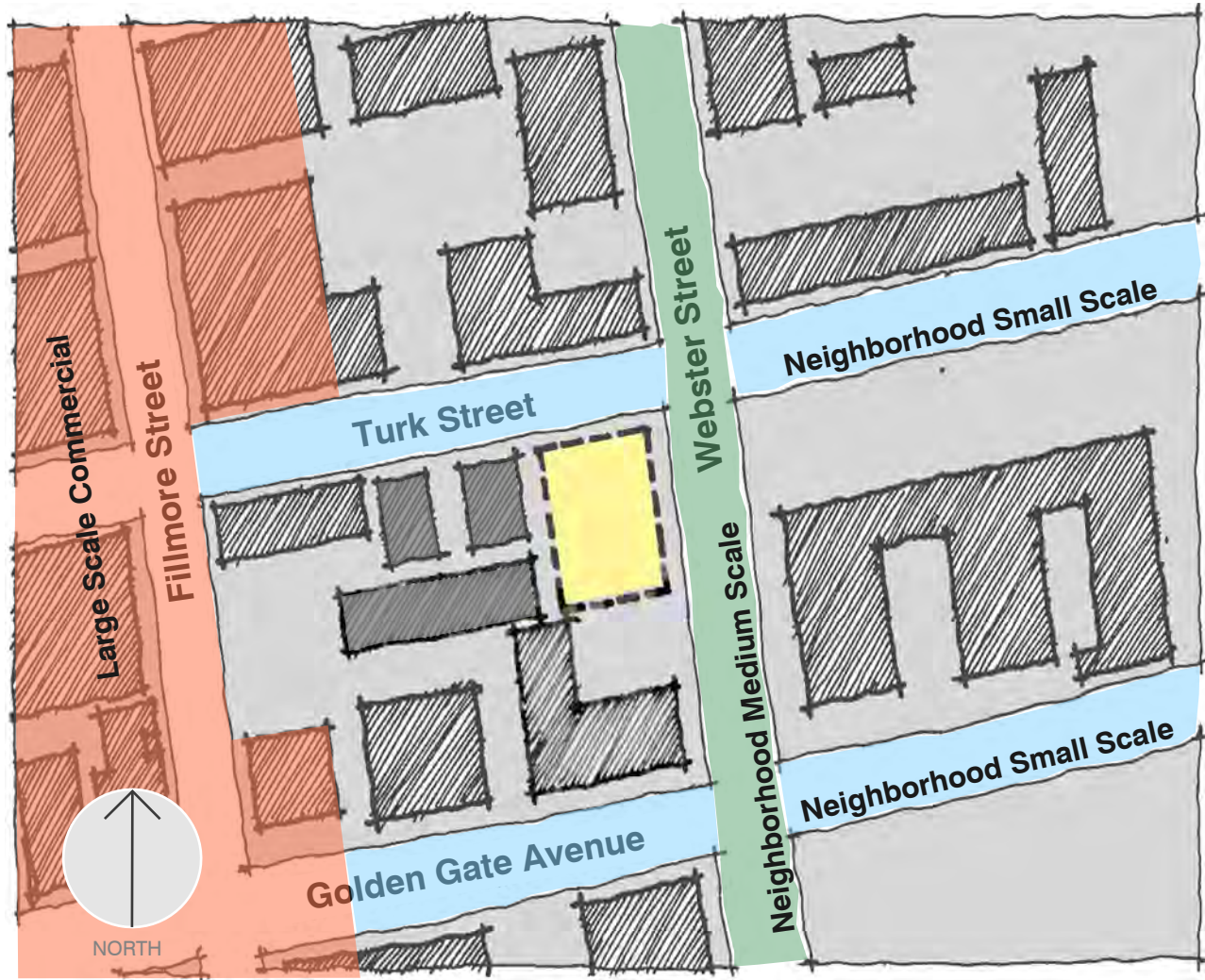
SITE PLAN - PROJECT LOCATION - SFFD FIRE STATION 5 -



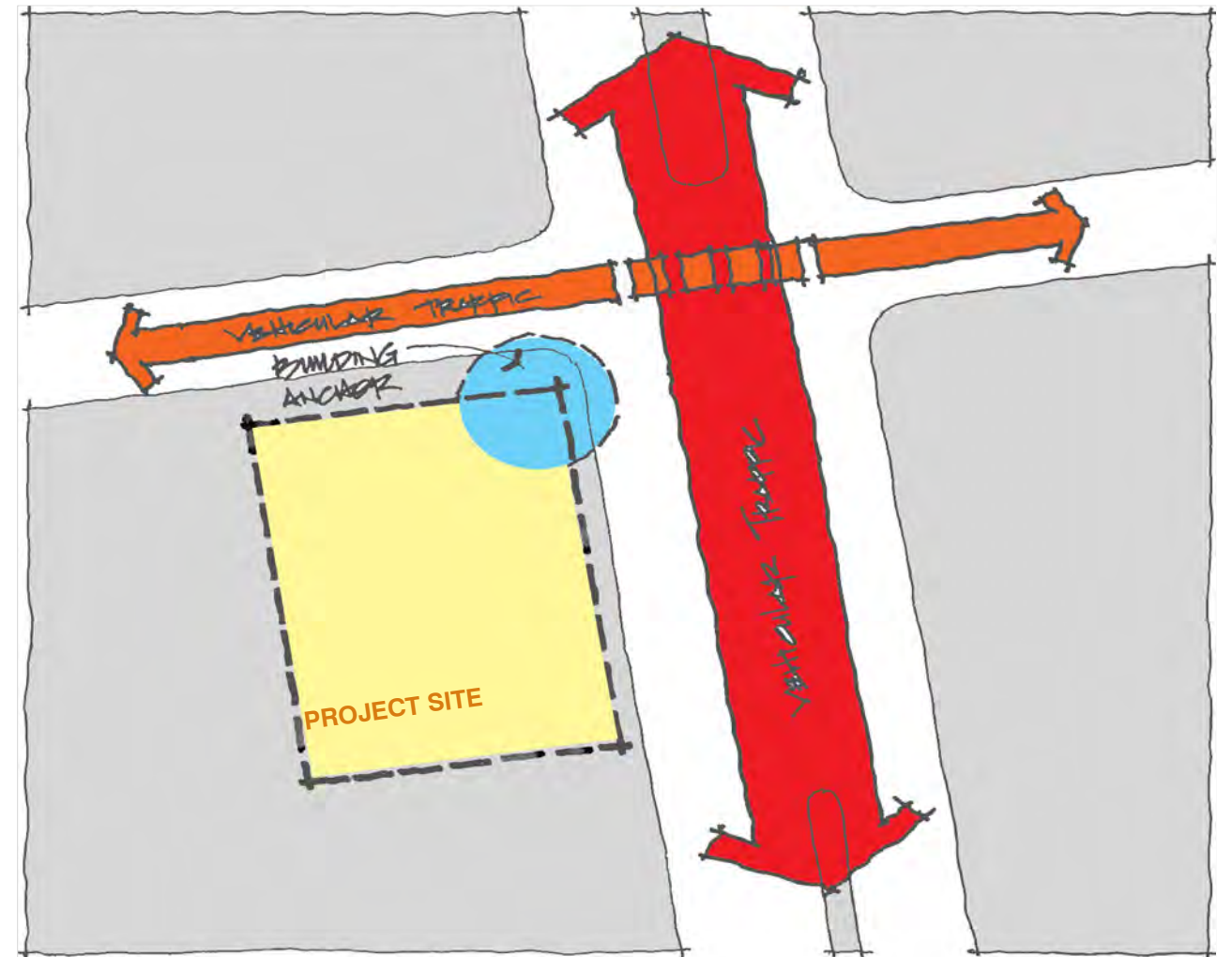
**PROJECT LOCATION -
1301 TURK STREET -**

Neighborhood Context - Neighborhood Plan

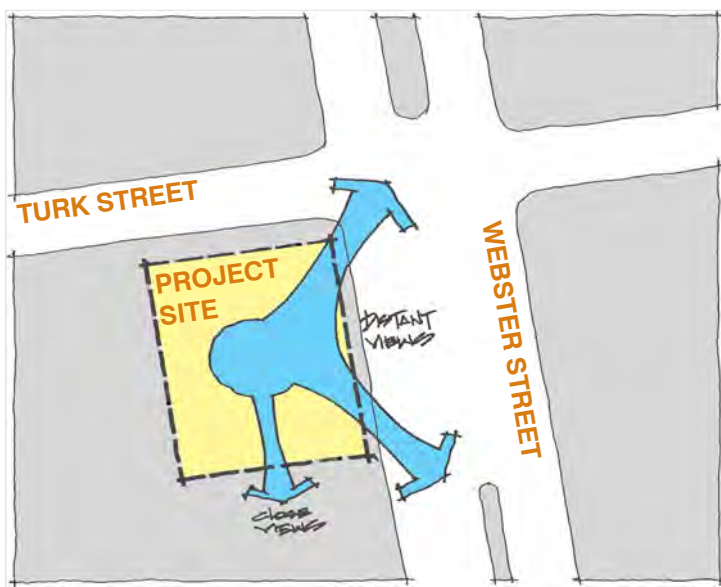
Neighborhood Context - Access & Traffic Diagrams -



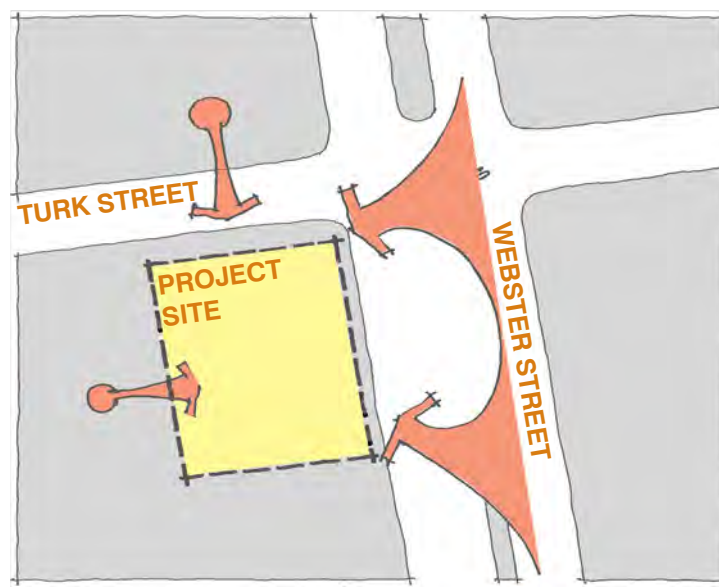
CONTEXT



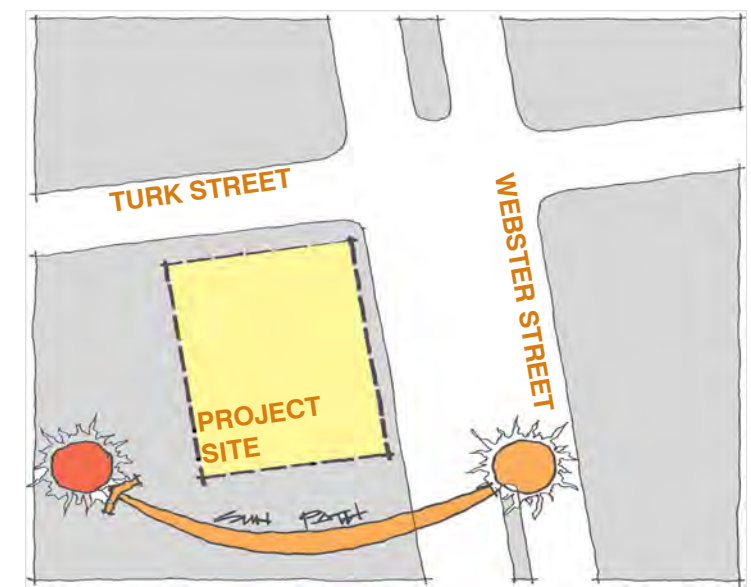
TRAFFIC



VIEWS OUT



VIEWS IN



SOLAR

Neighborhood Context - Fire Station 5 Existing Building views



WEBSTER STREET - SOUTH & EAST FACADES



CORNER OF TURK & WEBSTER STREET



TURK STREET - NORTH & WEST FACADES



WEBSTER STREET - EAST FACADE



WEBSTER STREET - EAST FACADE



TURK STREET - NORTH FACADE



Contemporary Fire Stations Design Examples -



OGDEN INTERNATIONAL SCHOOL - CHICAGO 2012



FAGUS FABRIK - WALTER GROPIUS - GERMANY 1913



FOURTH & ROY TOWN HOMES - SEATTLE



KOLUMBA MUSEUM - P. ZUMTHOR - GERMANY



SHUGIN HOUSING BLDG. TOKIO

Contemporary Design Examples -



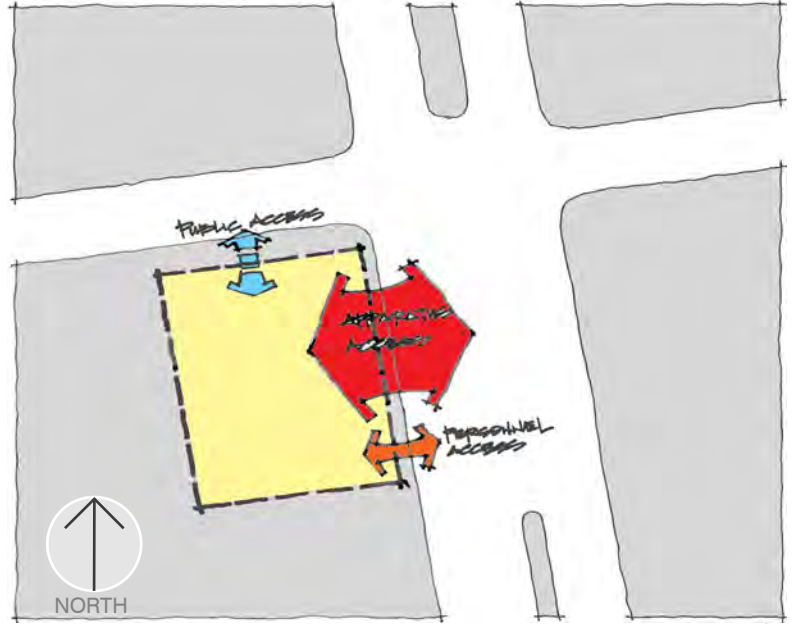
SPITAFIELDS BUILDING - LONDON



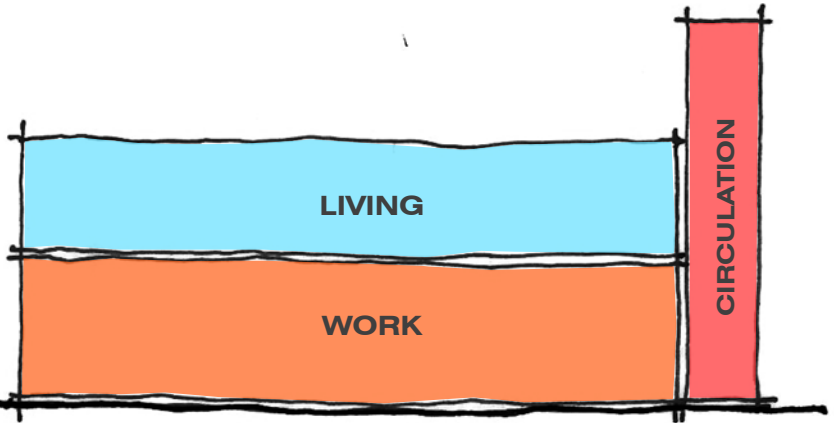
DUPAGE HOUSES OF WORSHIP CHAPEL & ADMINISTRATIVE WING - ILLINOIS



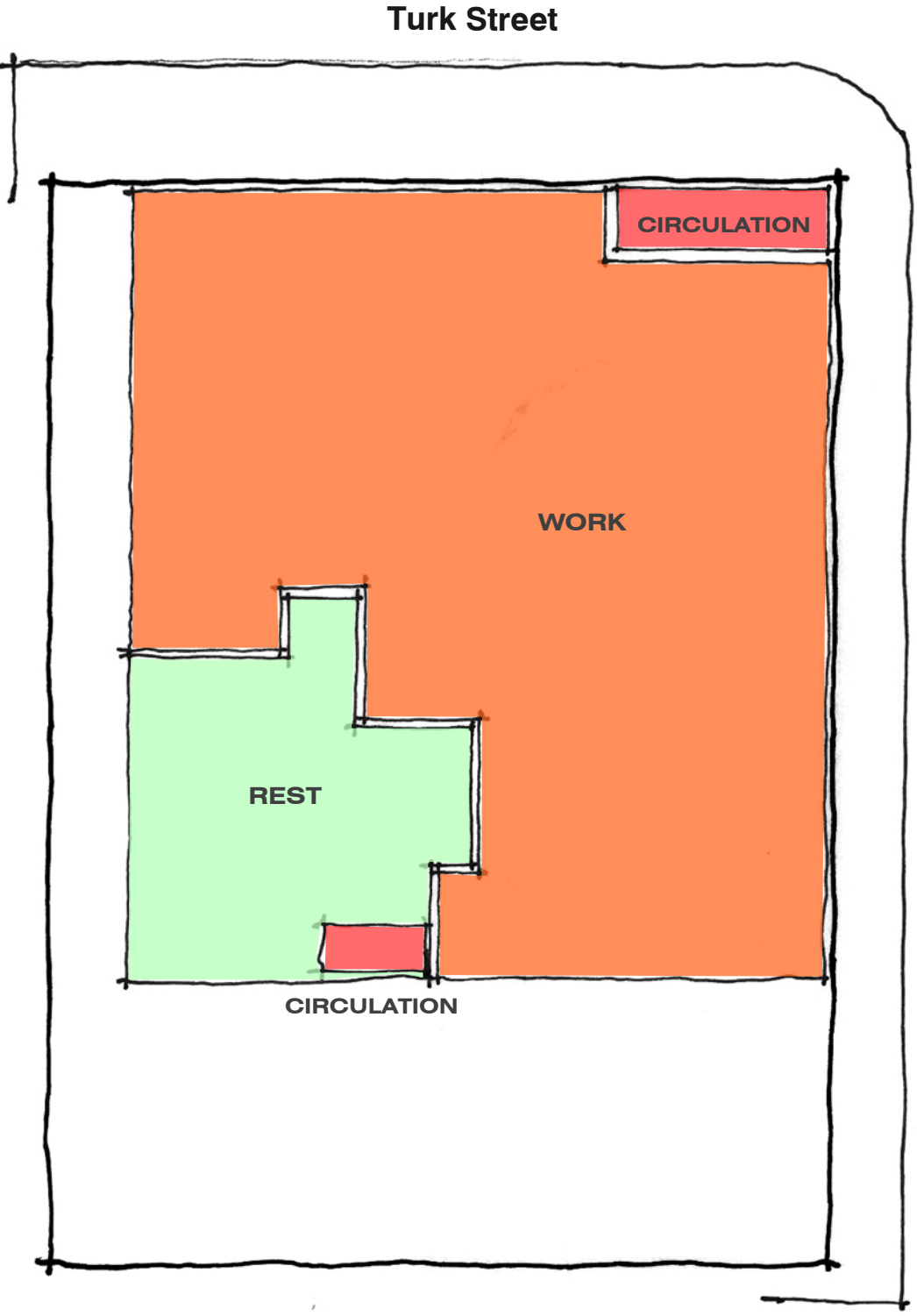
6TH ST. RESIDENCE ARBOL DE LA VIDA - ARIZONA



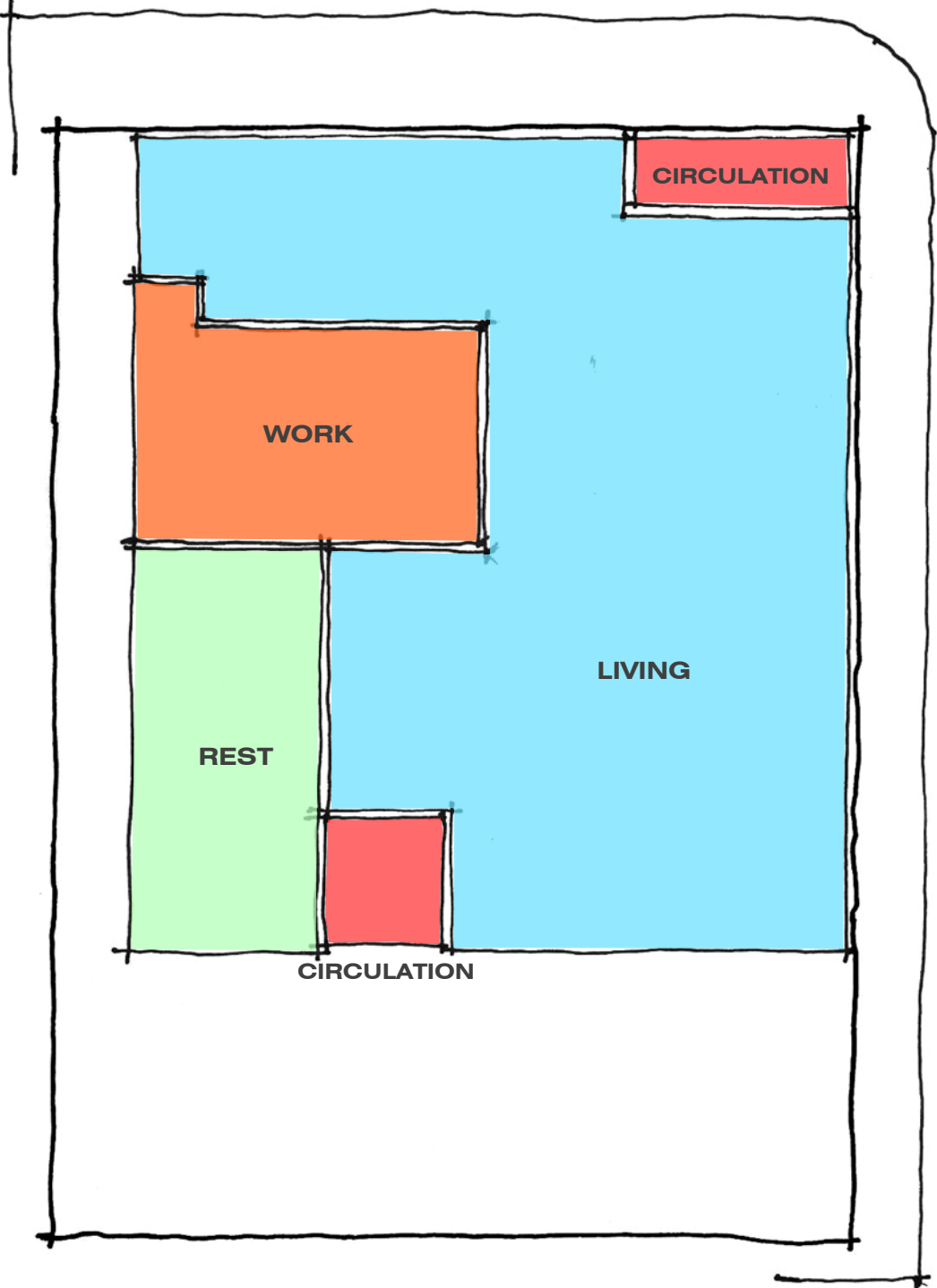
SITE PLAN



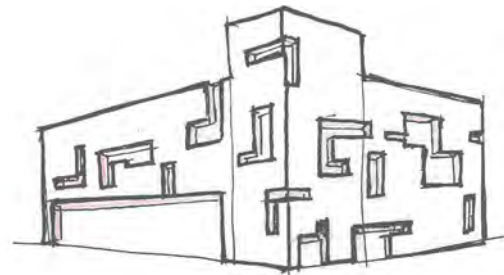
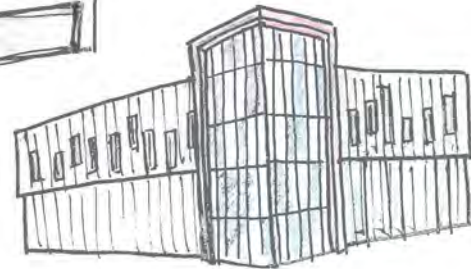
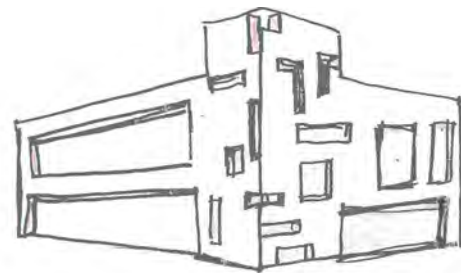
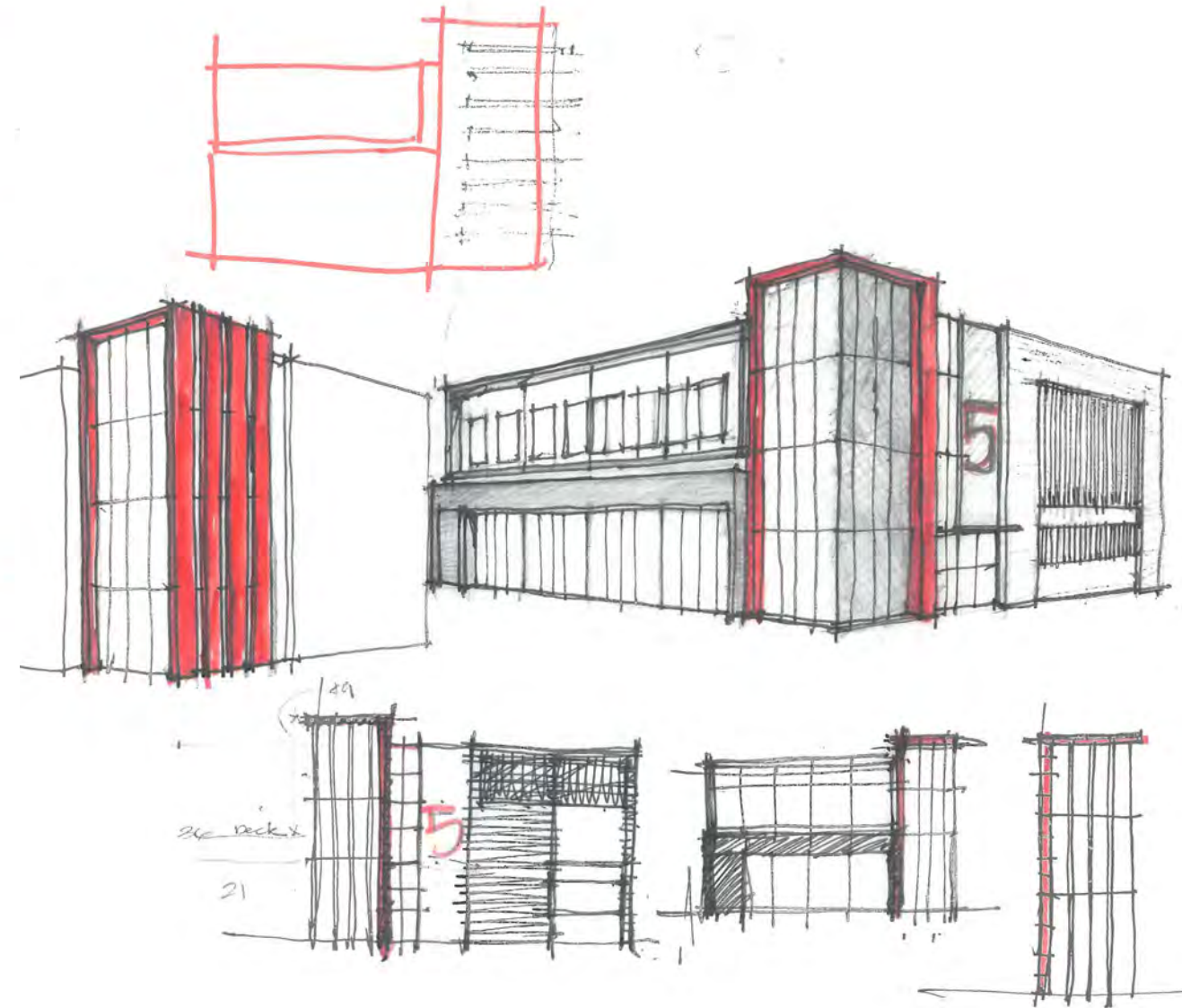
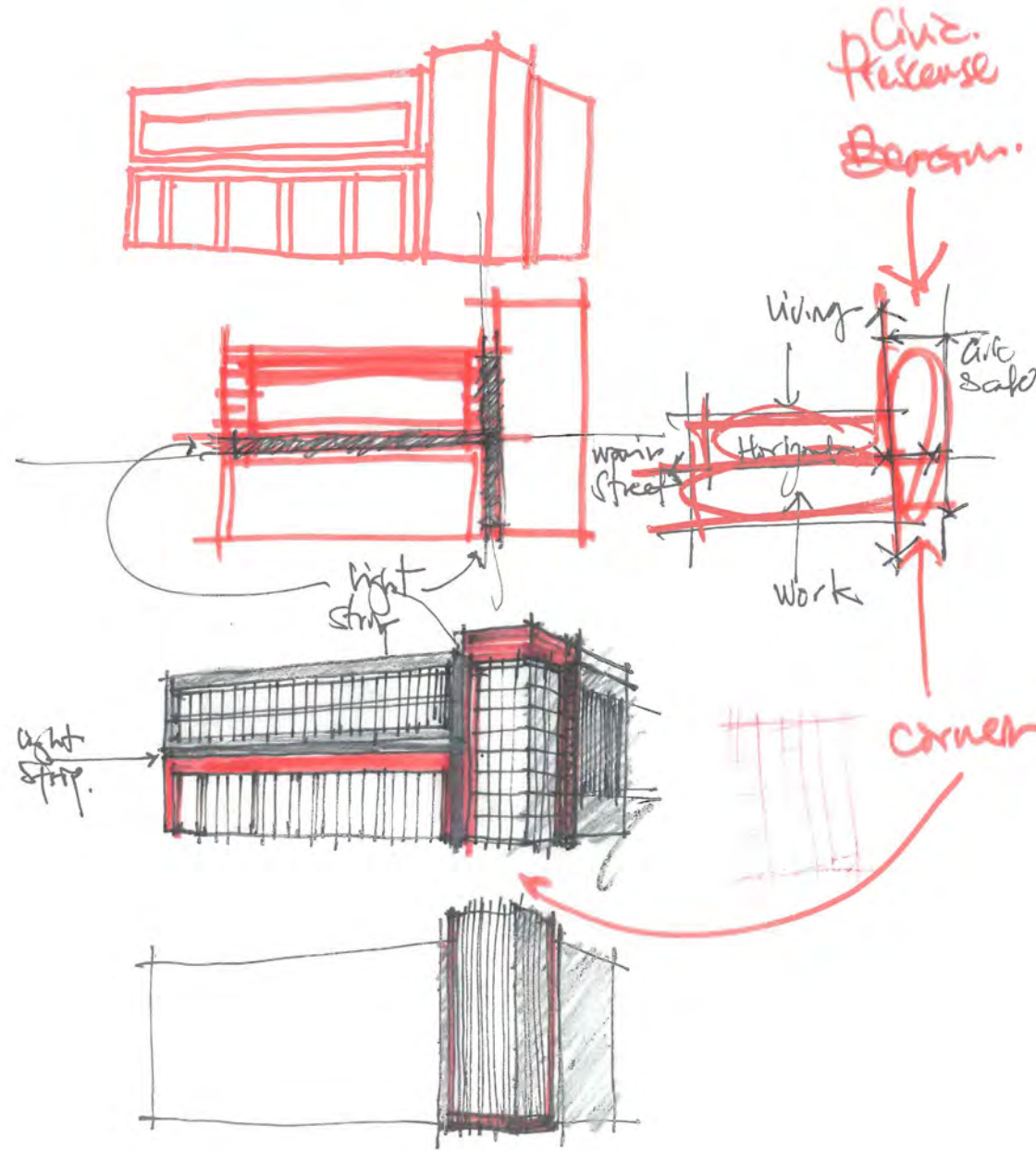
ELEVATION

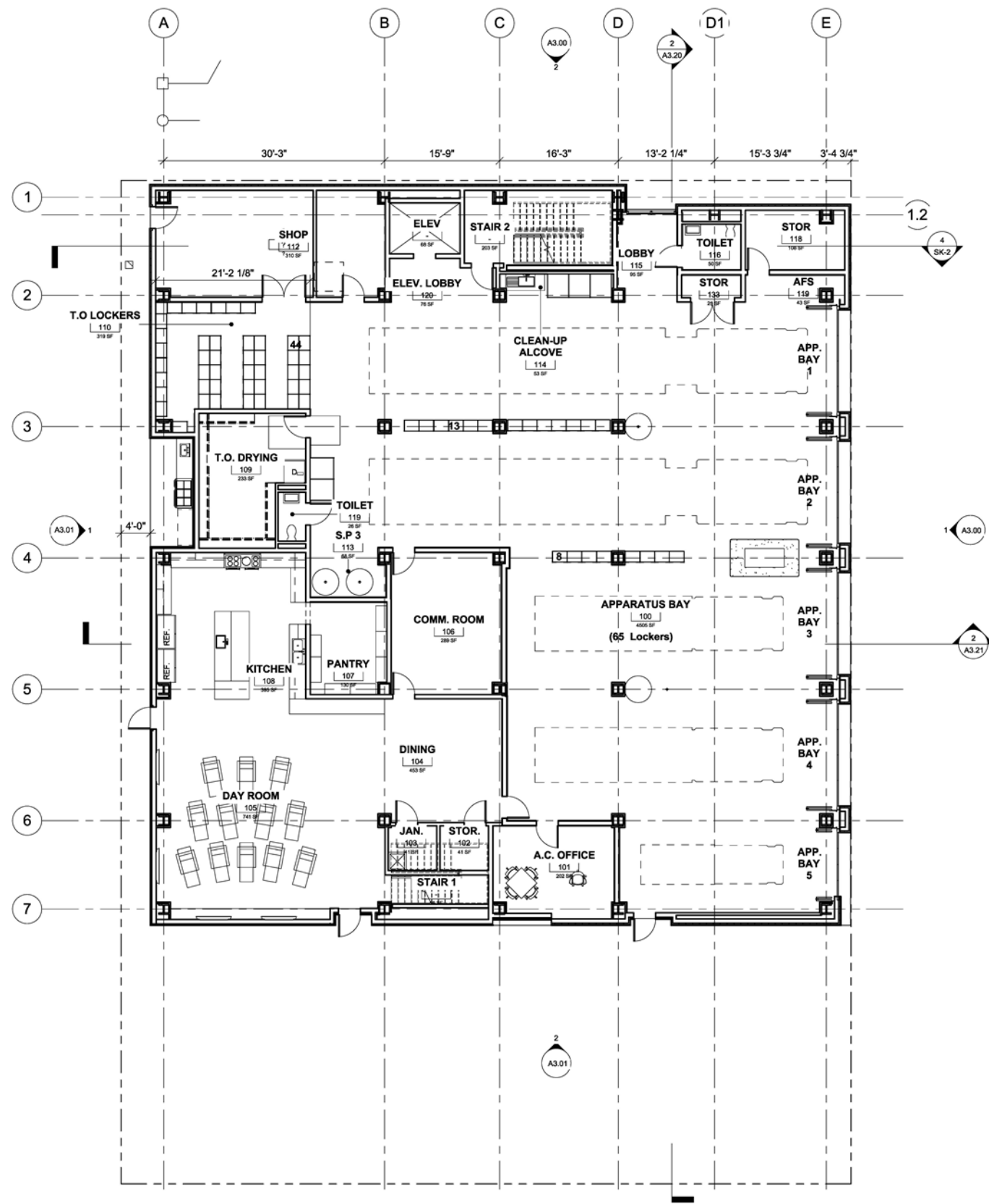


FIRST FLOOR PLAN

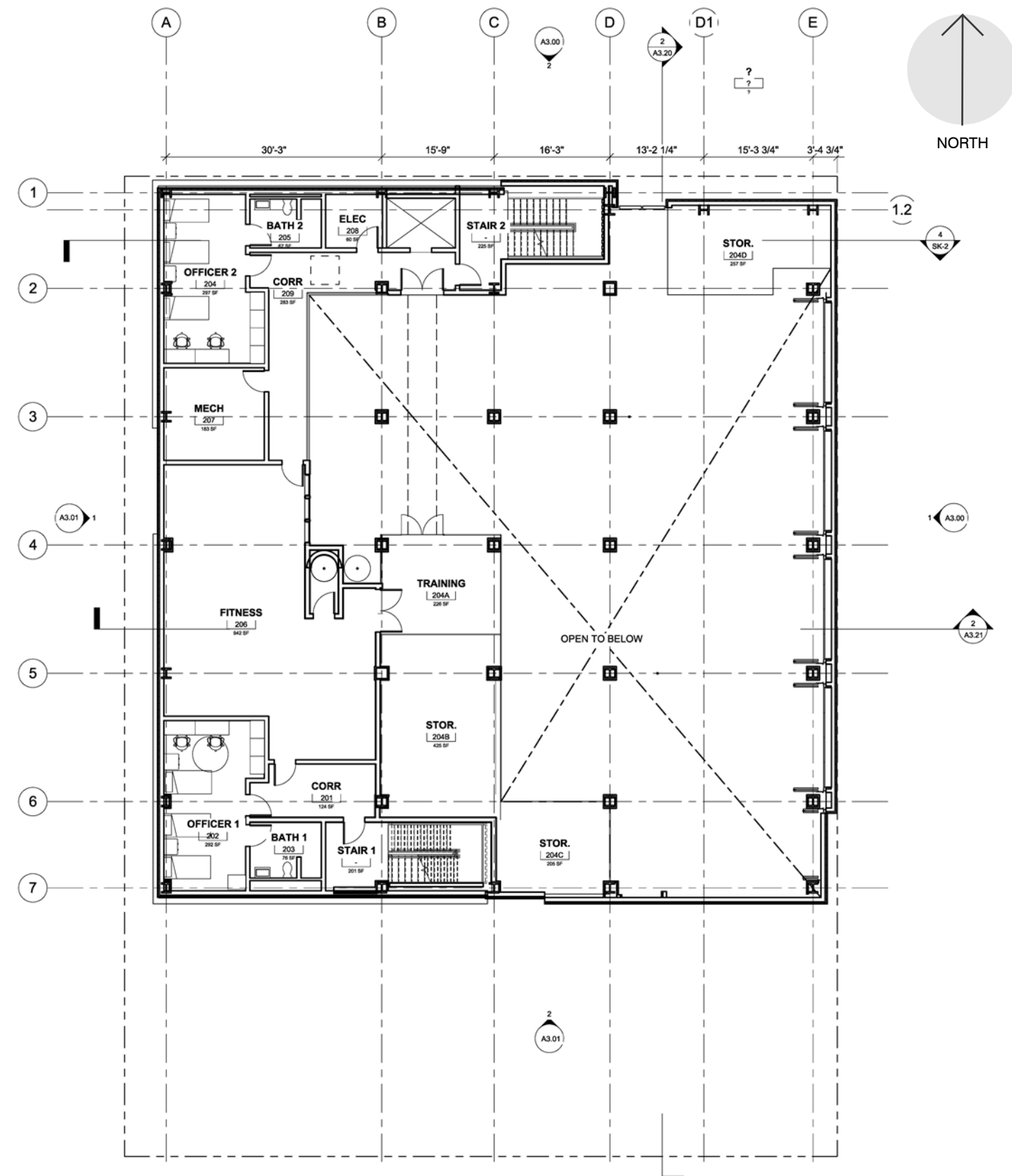


SECOND FLOOR PLAN



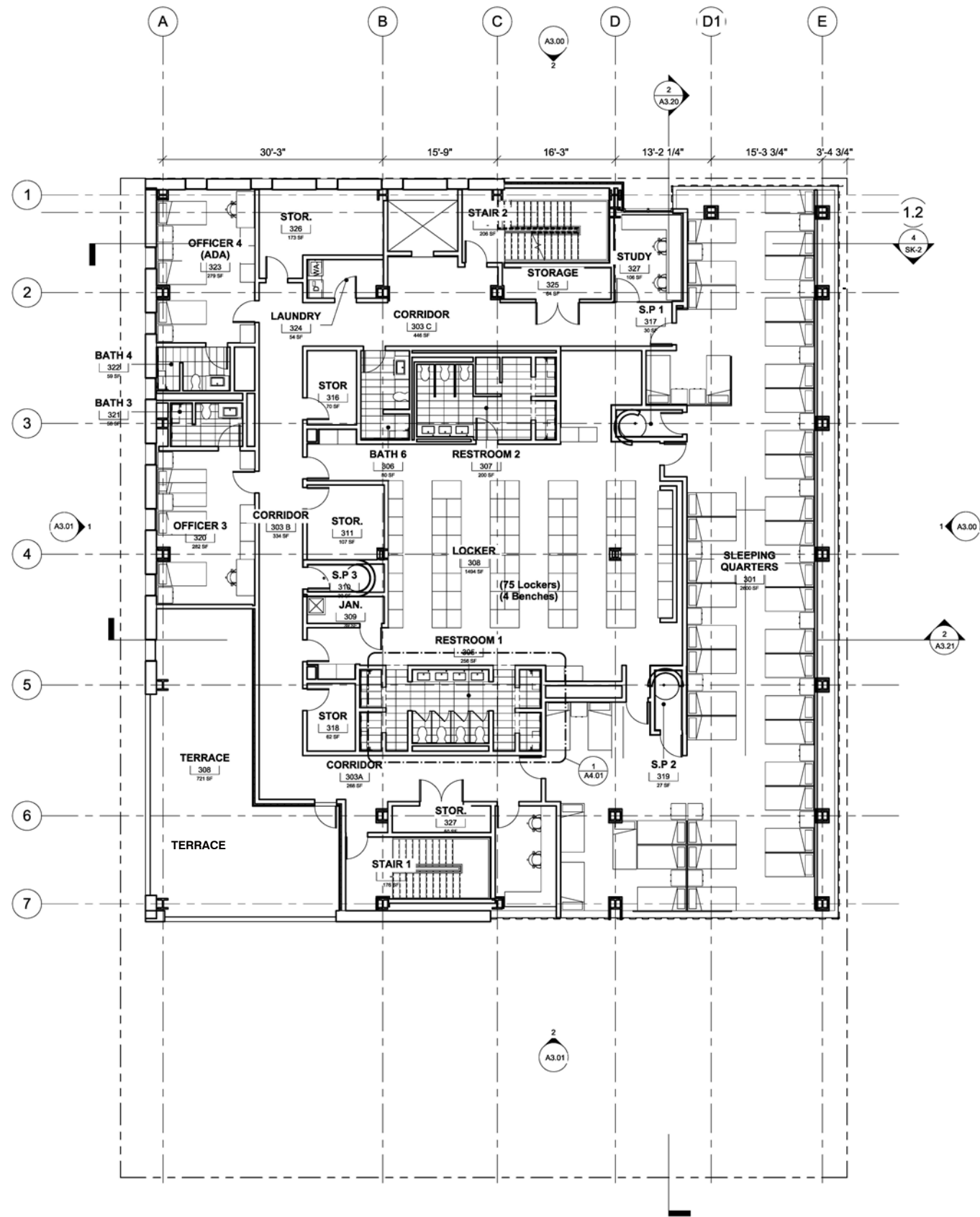


1 PLAN – FIRST FLOOR
1/8" = 1'-0"

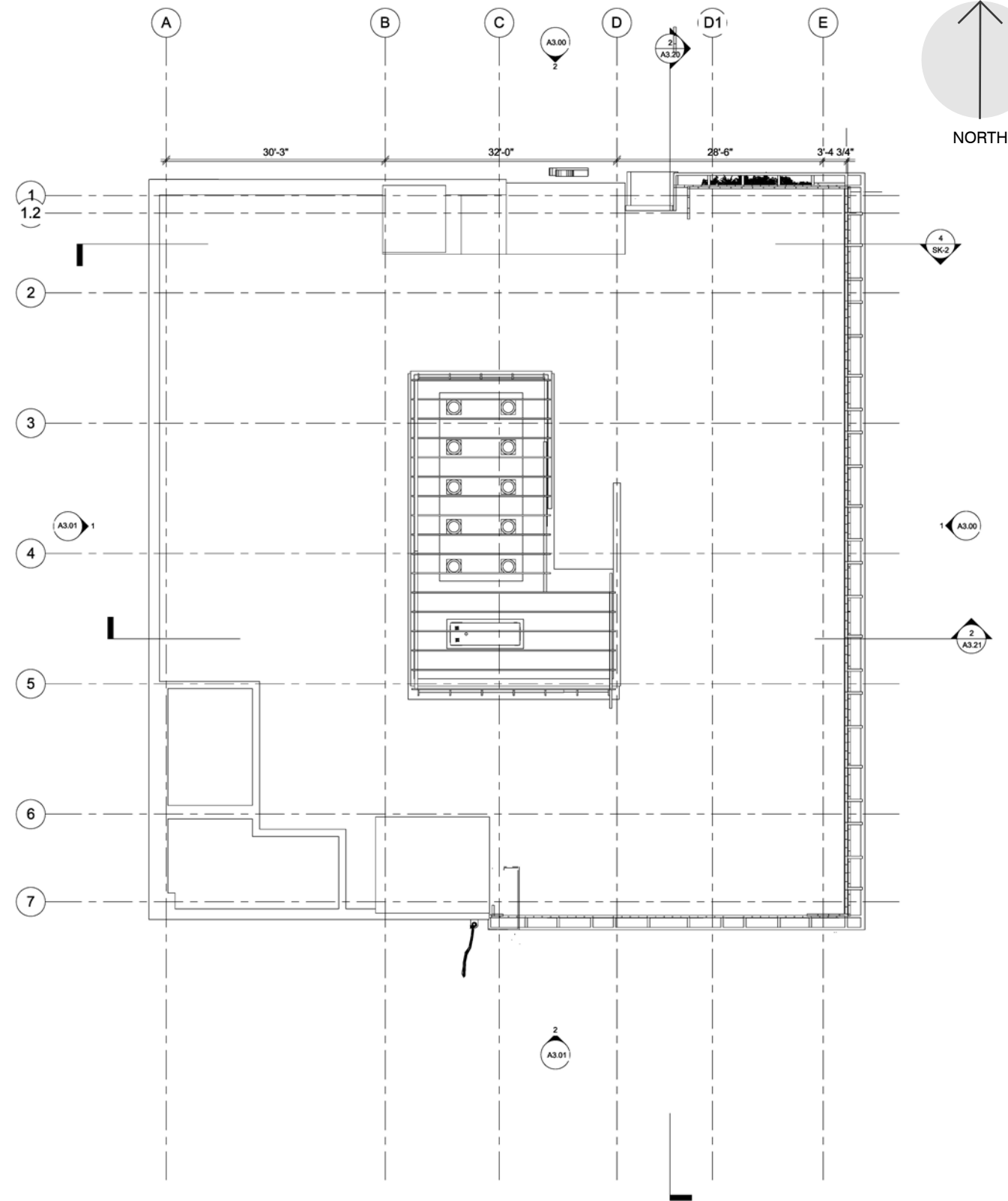


1 PLAN – MEZZANINE
1/8" = 1'-0"

Design Development - Concept
Floor Plans



① PLAN – SECOND FLOOR
1/8" = 1'-0"



① PLAN – ROOF
1/8" = 1'-0"

**Design Development - Concept
Floor Plans**

Design Development - Concept



WEBSTER & TURK



EAST ELEVATION - WEBSTER STREET



NORTH ELEVATION - TURK STREET



Design Development - Concept



TURK STREET VIEW



SOUTH ELEVATION



WEST ELEVATION

Design Development - Concept



WEBSTER STREET VIEW



TURK STREET VIEW

Questions?

