

EARTHQUAKE SAFETY and
EMERGENCY RESPONSE (ESER) BOND 1
Neighborhood Fire Stations

Fire Station No. 5
Civic Design Review
Informational Presentation



FIRE STATION No. 5

Earthquake Safety and Emergency Response (ESER) 1

\$412.3M General Obligation Bond Authorized in June 2010 with approval by 79.4% of voters

- Neighborhood Fire Stations \$65.1
- Auxiliary Water Supply System \$104.2
- Public Safety Building (includes Mission Bay Fire Station #4) \$243.0

Additional Funding added to NFS FY 2012-13 \$8.129

Total Neighborhood Fire Stations Funding \$73.229



FIRE STATION No. 5

Earthquake Safety and Emergency Response (ESER) 1

Focused Scope Program

- Correct severe deficiencies of selected building components
- Assure station functionality for 8-10 years

Comprehensive Renovation Program



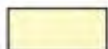
- Correct all deficiencies pertaining to emergency response and health and safety issues
- Renovate, renew, or replace major building systems to assure station functionality of at least 15 years

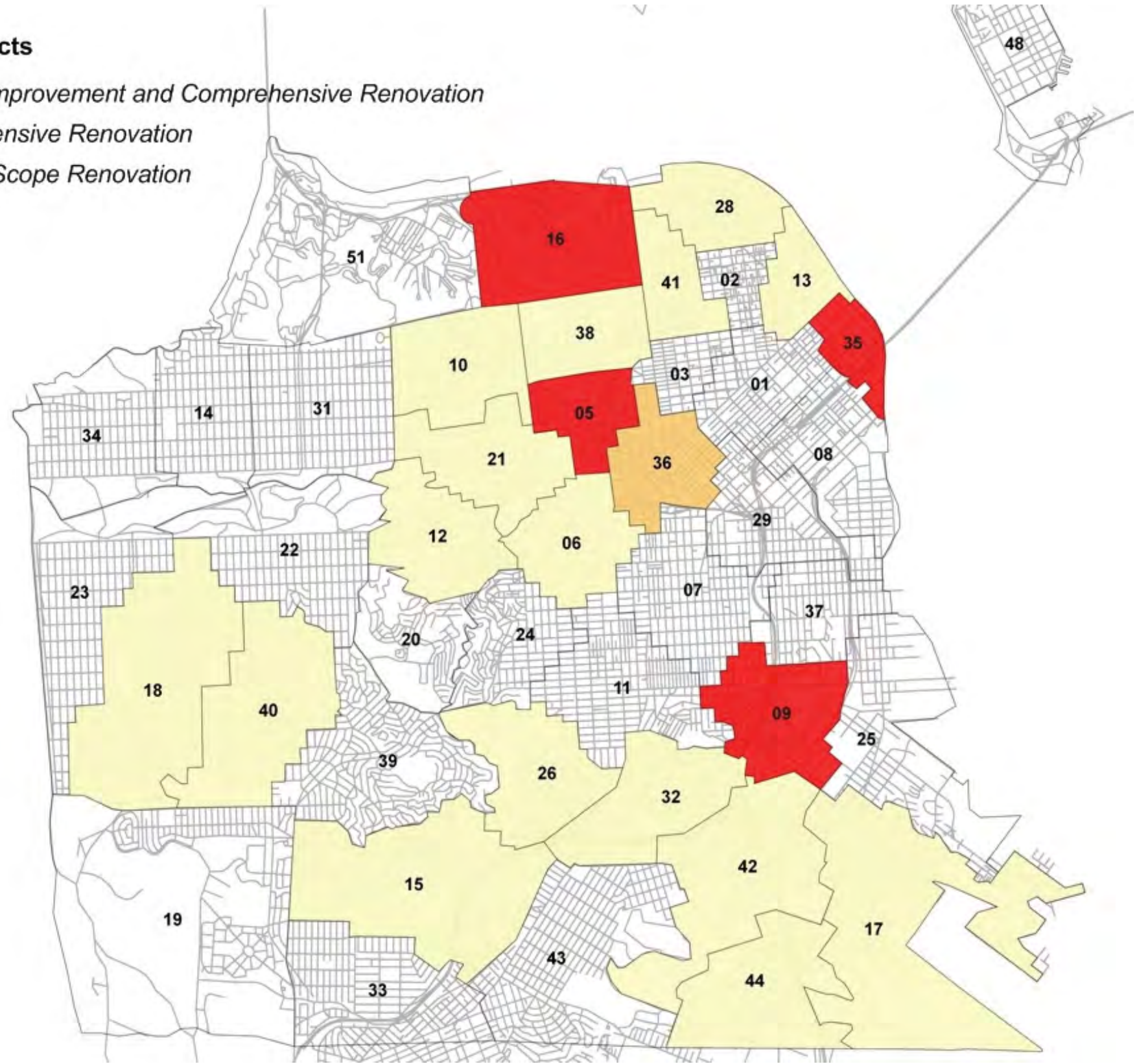
Seismic Improvement Program

- Improve seismic performance to conform with current building codes
- Complete a comprehensive renovation as described above



Fire Station Projects

-  *Seismic Improvement and Comprehensive Renovation*
-  *Comprehensive Renovation*
-  *Focused Scope Renovation*



FIRE STATION No. 5

- Historic Evaluation
- City Planning Status
- SFAC Public Art Program Status
- Civic Design Review
- Total Project Budget: \$13.8M



ESER 2010 NFS Excerpt 2013-2017

ActivityName	2013				2014				2015				2016				2017				2018				2019			
	Q1	Q2	Q3	Q4	Q1	Q2	Q3	Q4	Q1	Q2	Q3	Q4	Q1	Q2	Q3	Q4	Q1	Q2	Q3	Q4	Q1	Q2	Q3	Q4	Q1	Q2	Q3	Q4
ESER 1 NFS Excerpt 2013 - 2016 (NAP)																												
Station Closures Summary																												
Station 44 - Unoccupied	10-31-13 A				██████████				07-10-14																			
Station 36 - Unoccupied	11-04-13 A				██████████				11-14-14																			
Station 16 - Unoccupied					02-27-15				██████████				05-13-16															
Station 5 - Unoccupied									05-26-16				██████████				10-09-17											





1956
Built

Interior renovations &
ADA upgrades
1993



2014
Present

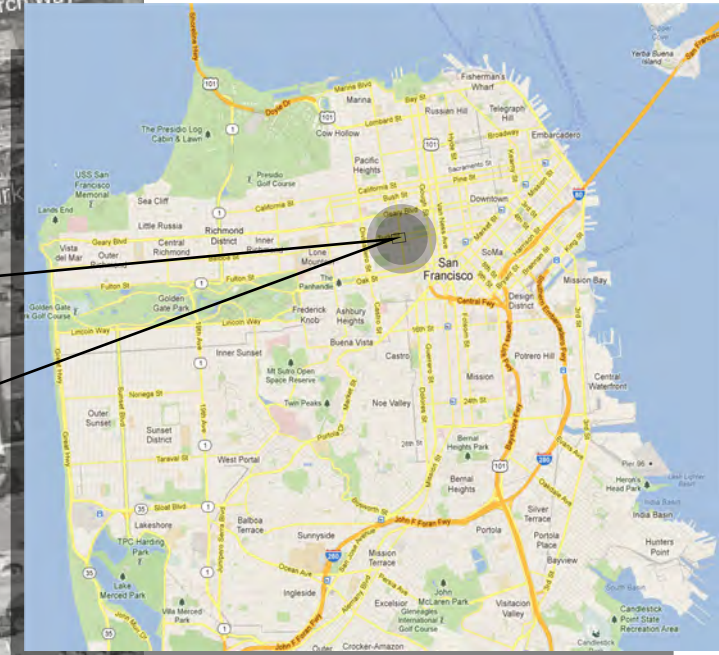
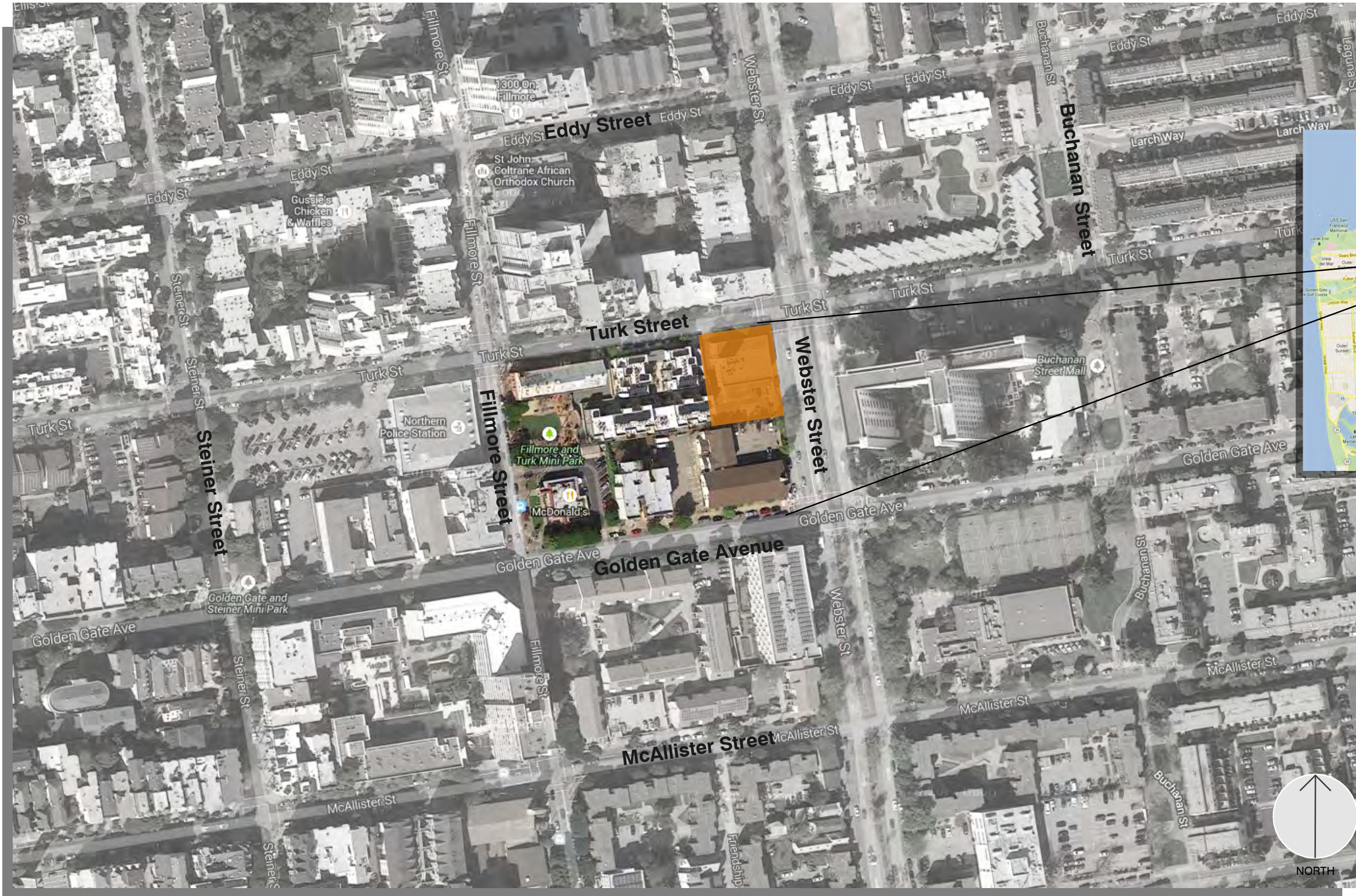


residential
 prepare
 response
 play
 ladder
 rest
 ventilation
 WORK
 quality
 eat
 dining
 LIVE
 bedroom
 engine
 quick
 apparatus
 training
 Comfort
 air
 tools
 fire
 cook
 truck
 eating
 cooking
 glass
 fast
 work
 firefighters
 life
 emergency
 bathroom
 dorm
 patio
 study
 kitchen
 light
 east



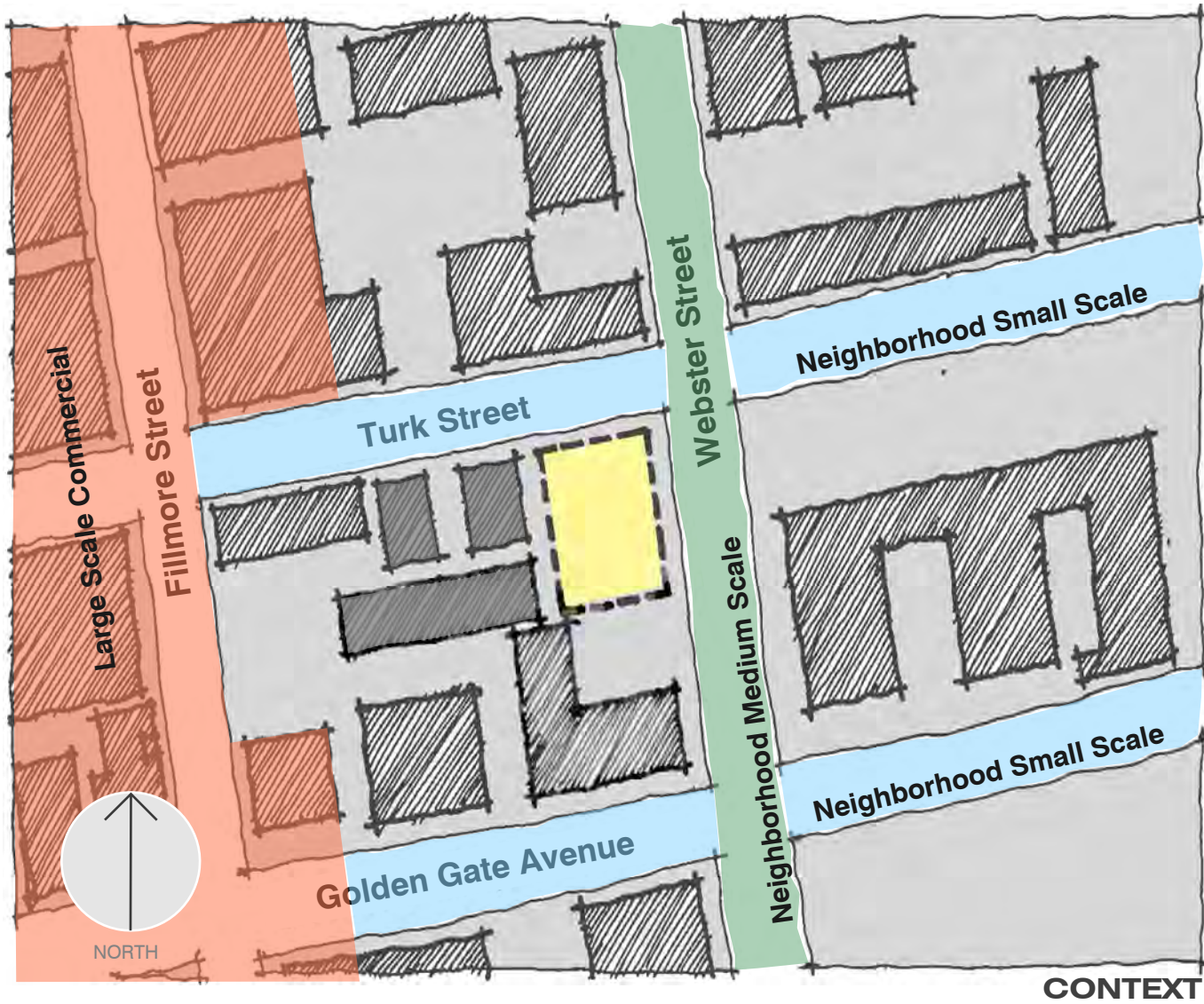


SITE PLAN - PROJECT LOCATION - SFFD FIRE STATION 5

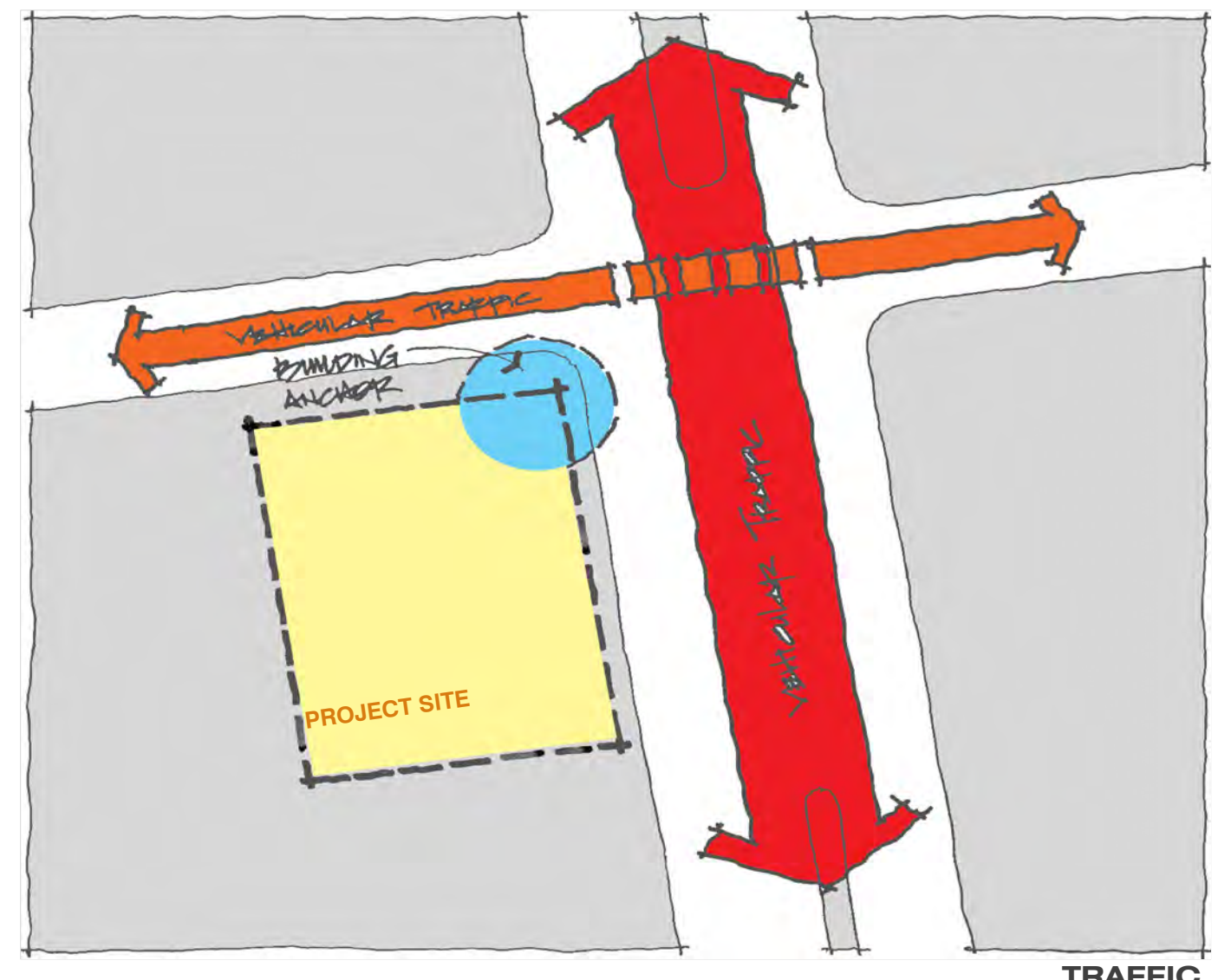


**PROJECT LOCATION
1301 TURK STREET**

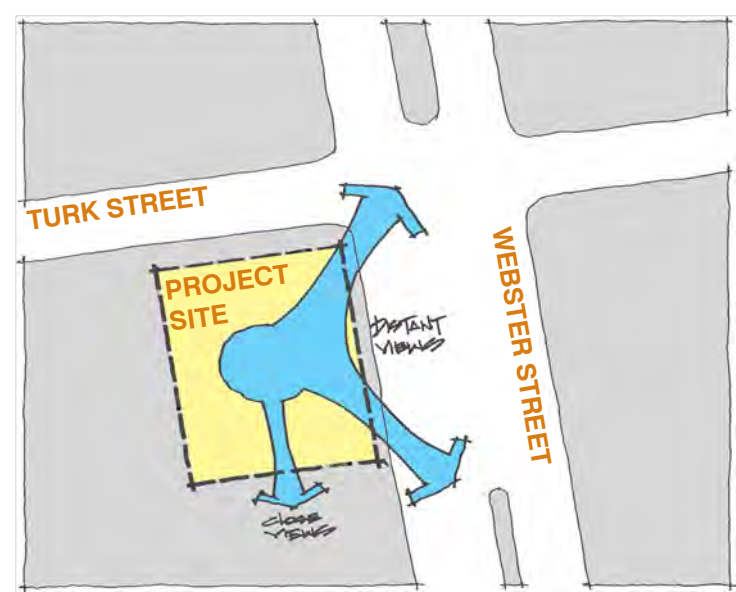




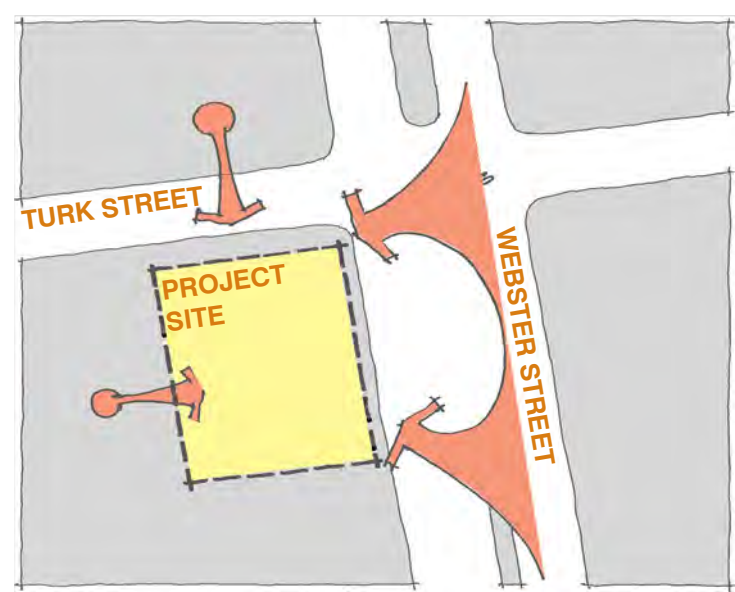
CONTEXT



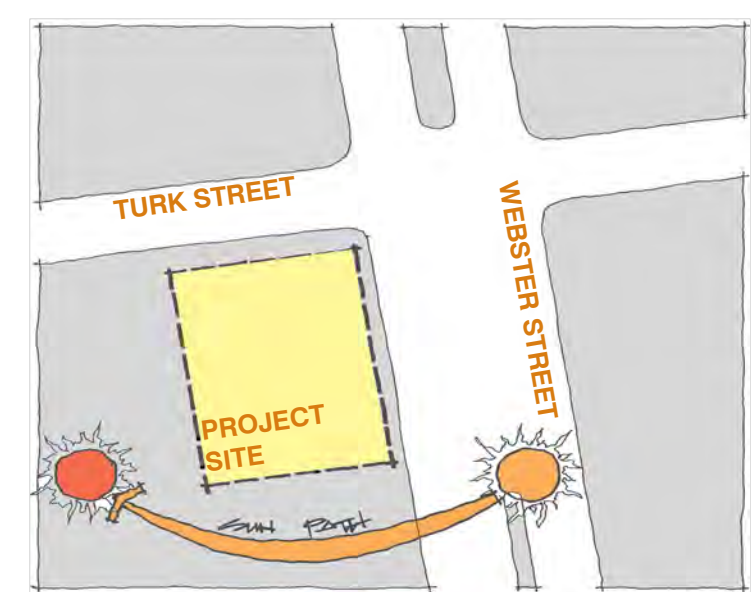
TRAFFIC



VIEWS OUT



VIEWS IN



SOLAR



SAN FRANCISCO FIRE DEPARTMENT - FIRE STATION No. 5 - EXISTING BUILDING



WEBSTER STREET - SOUTH & EAST FACADES



CORNER OF TURK & WEBSTER STREET



TURK STREET - NORTH & WEST FACADES



WEBSTER STREET - EAST FACADE



WEBSTER STREET - EAST FACADE



TURK STREET - NORTH FACADE







OGDEN INTERNATIONAL SCHOOL - CHICAGO 2012



FAGUS FABRIK - WALTER GROPIUS - GERMANY 1913



FOURTH & ROY TOWN HOMES - SEATTLE



KOLUMBA MUSEUM - P. ZUMTHOR - GERMANY



SHUGIN HOUSING BLDG. TOKIO



DUPAGE HOUSES OF WORSHIP CHAPEL & ADMINISTRATIVE WING - ILLINOIS

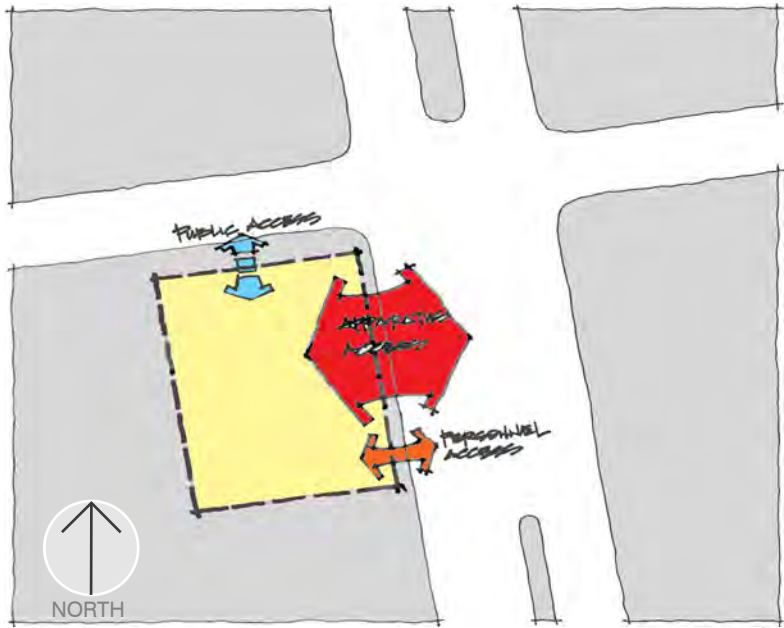


6TH ST. RESIDENCE ARBOL DE LA VIDA - ARIZONA

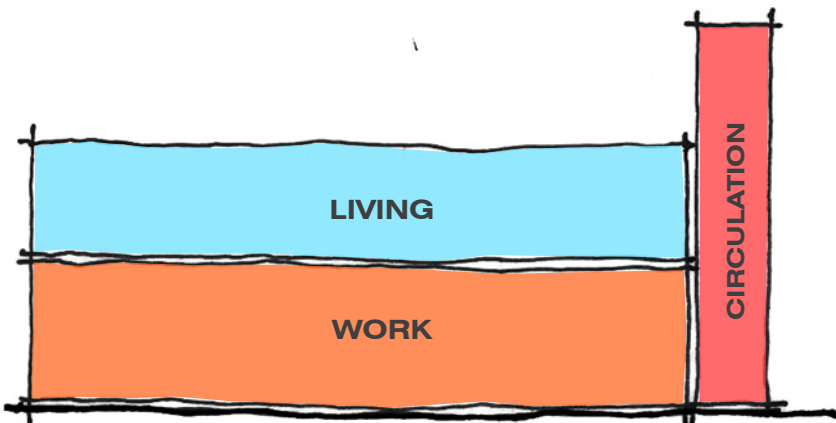


SPITAFIELDS BUILDING - LONDON

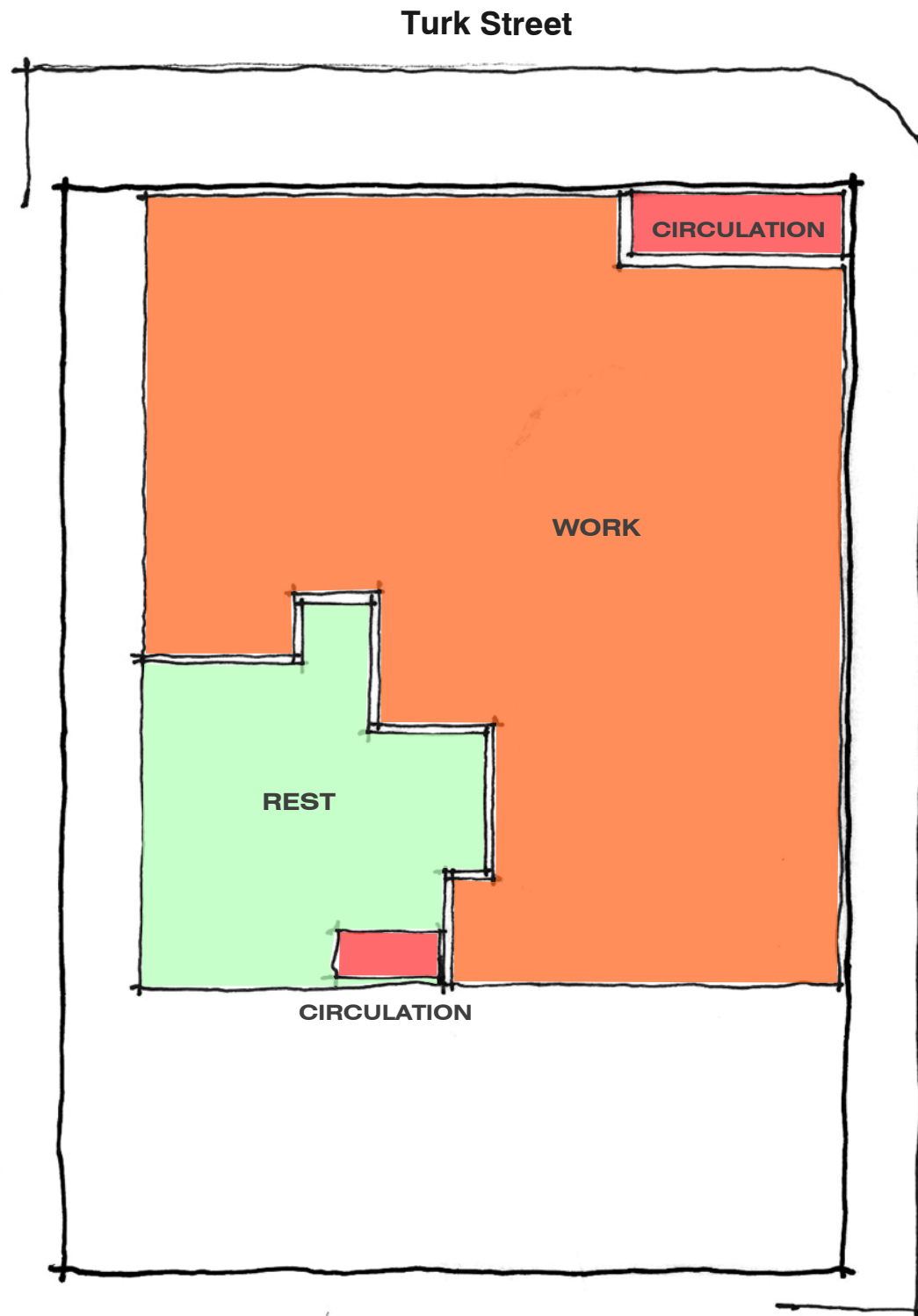




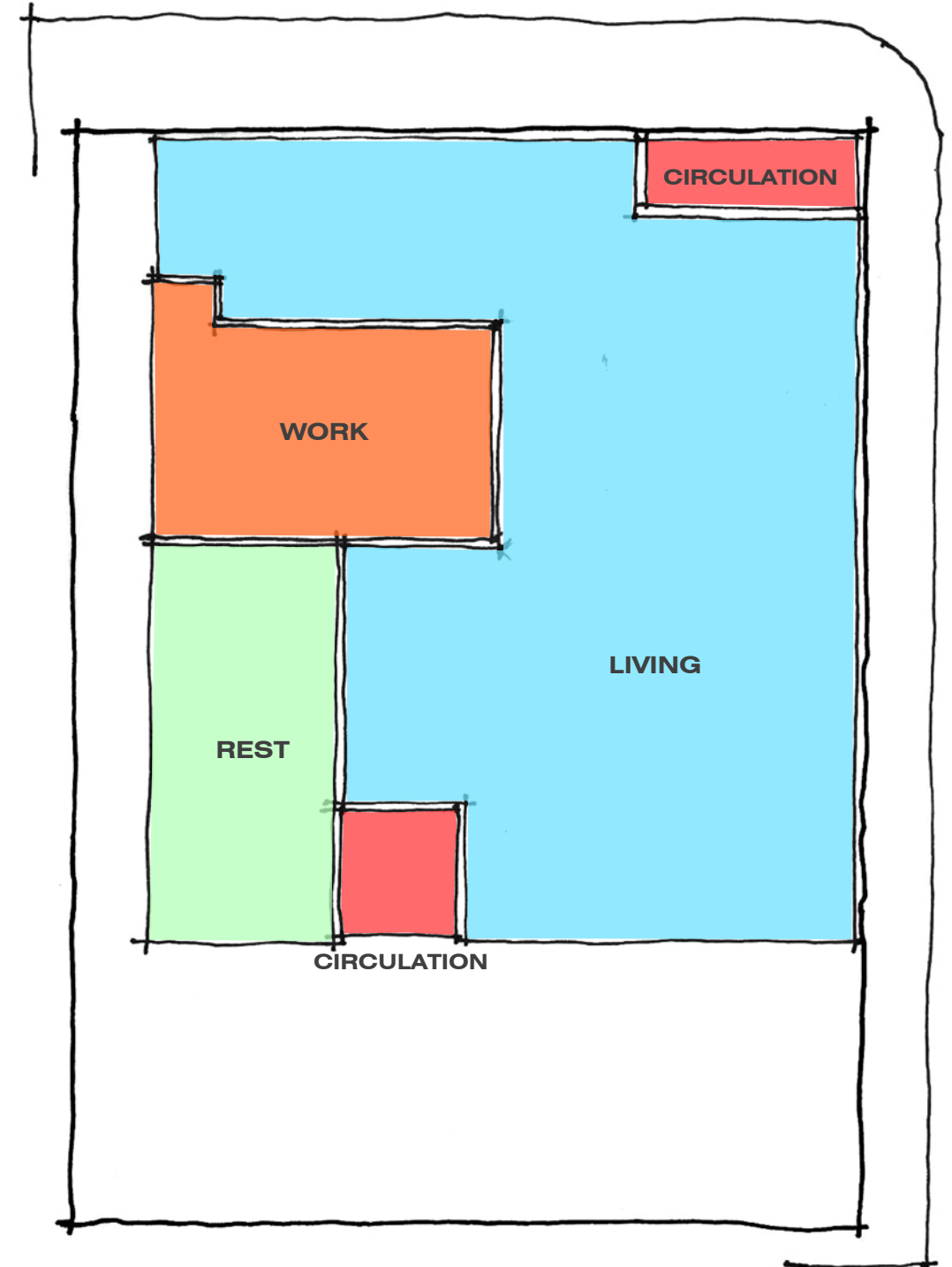
SITE PLAN



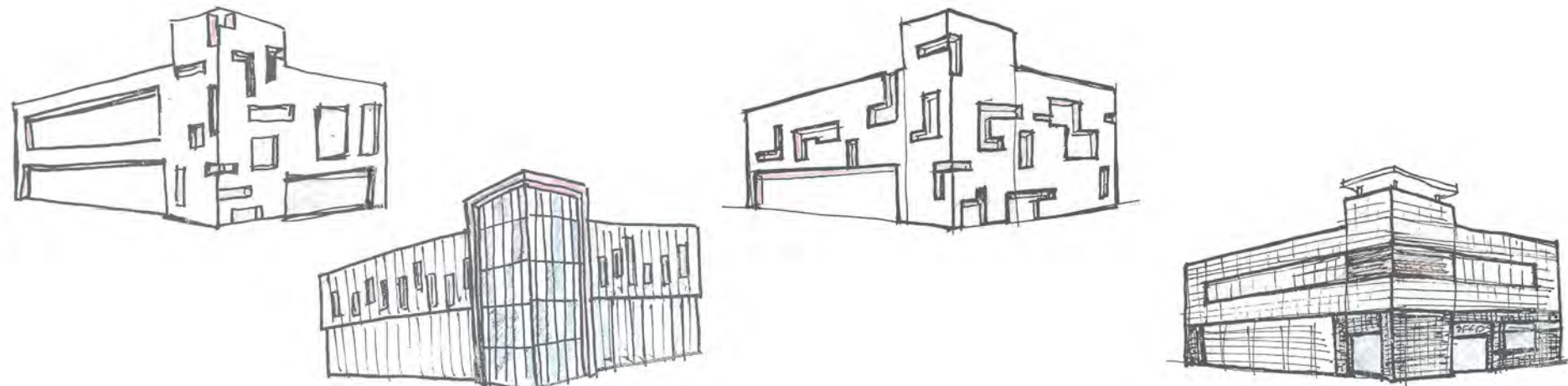
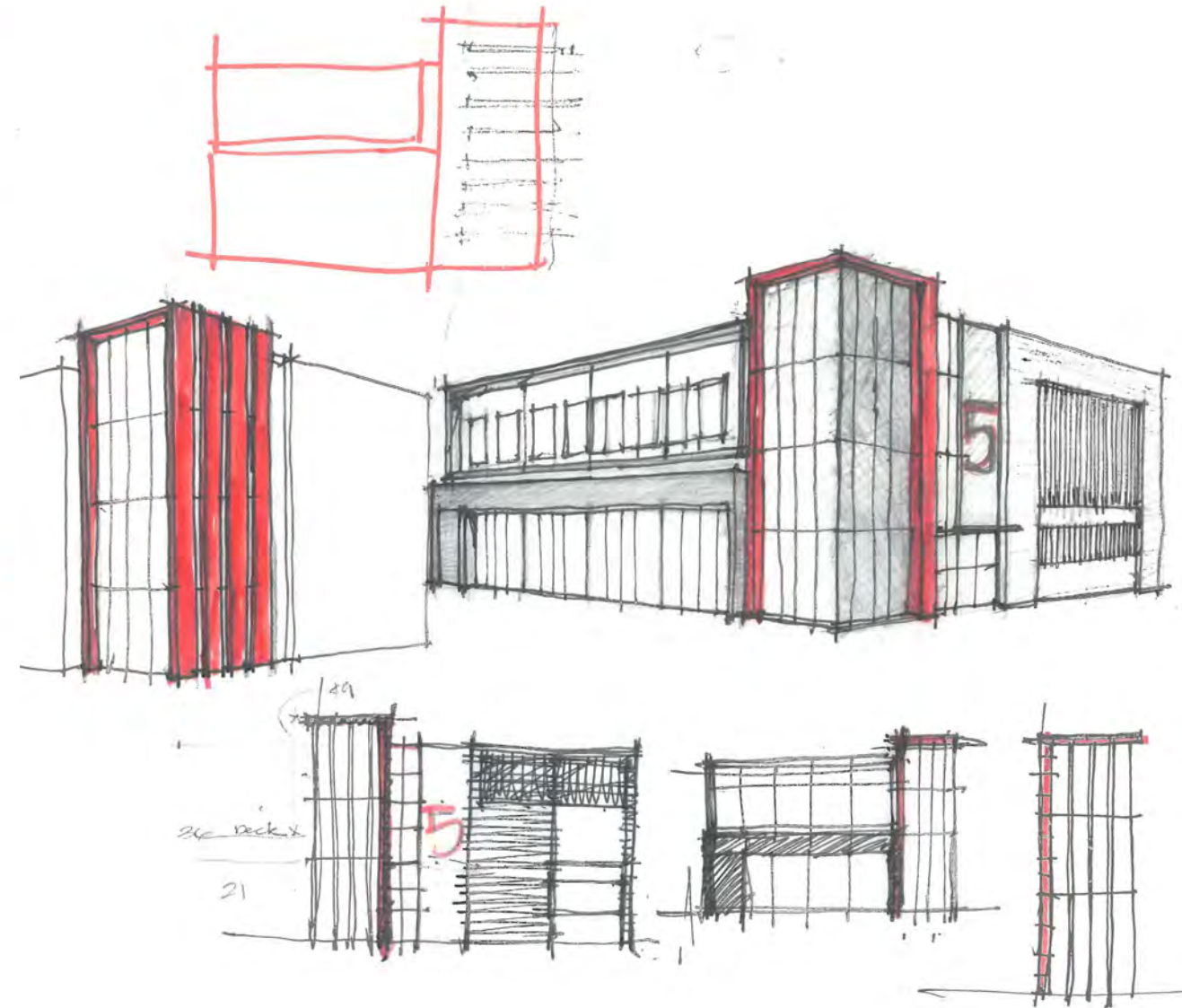
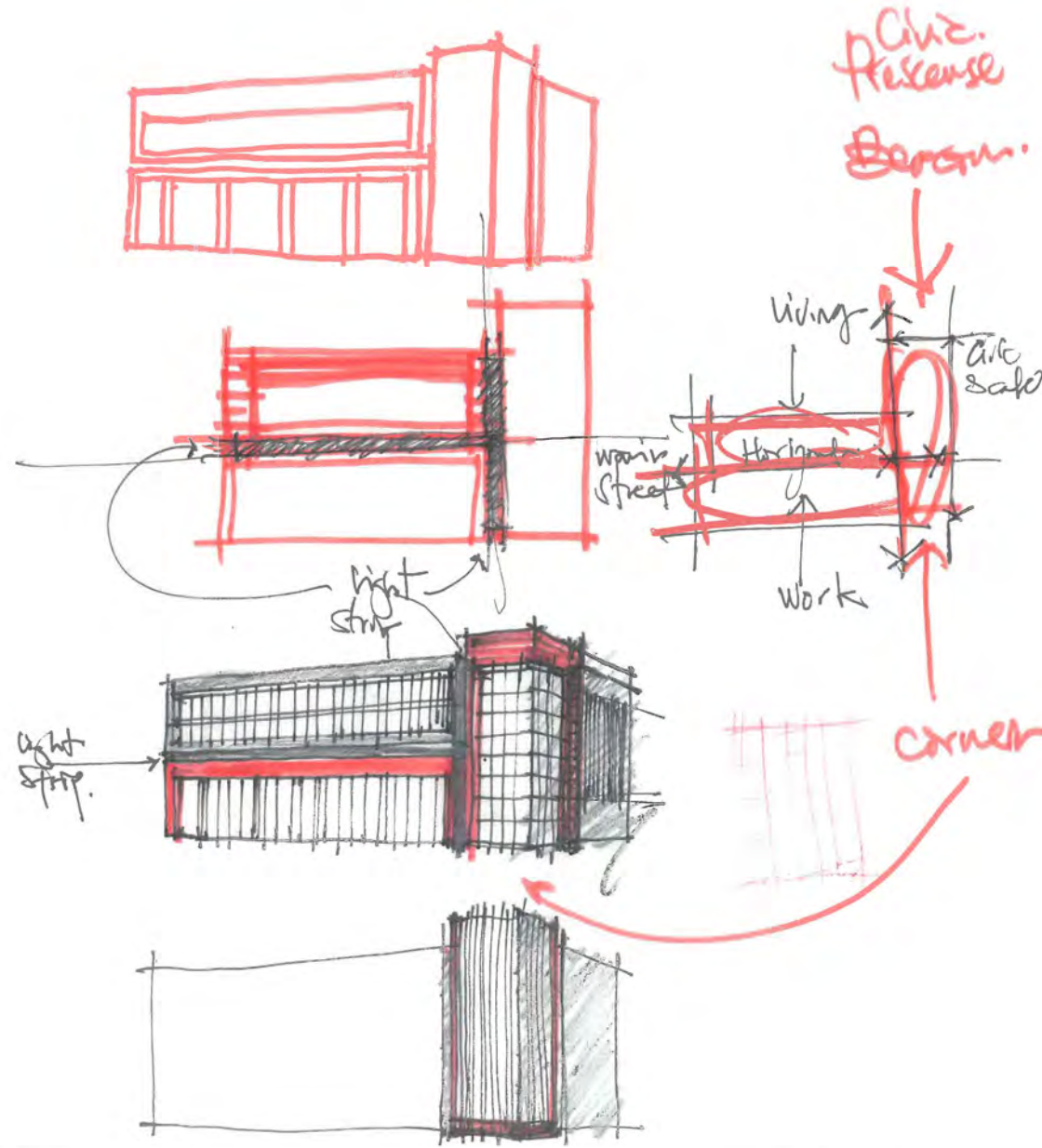
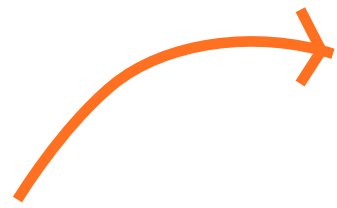
ELEVATION



FIRST FLOOR PLAN



SECOND FLOOR PLAN

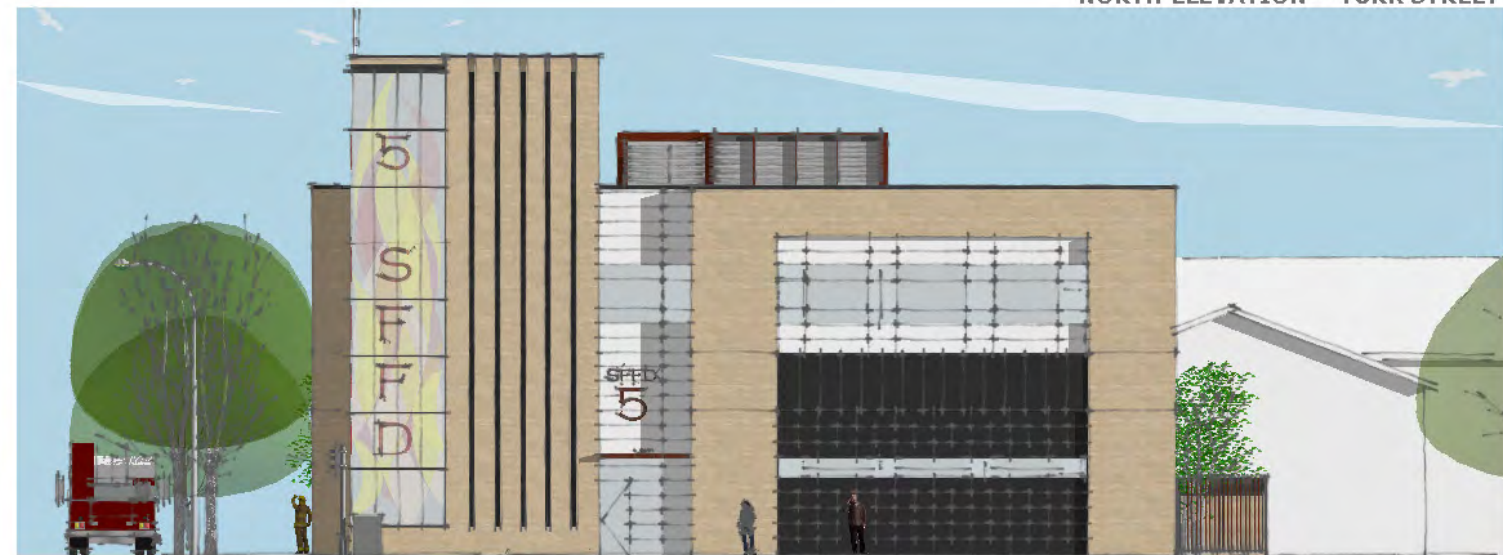
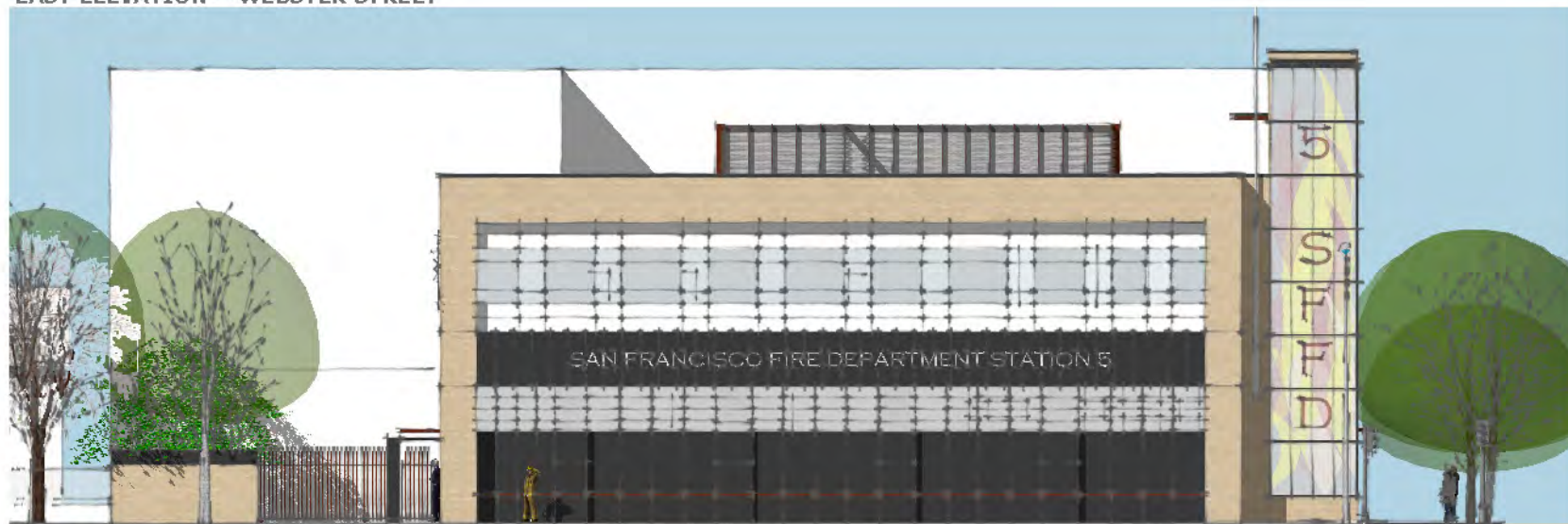




EAST ELEVATION - WEBSTER STREET



NORTH ELEVATION - TURK STREET





TURK STREET VIEW



SOUTH ELEVATION



WEST ELEVATION





WEBSTER STREET VIEW

