



# Van Ness BRT

# VAN NESS AVENUE BUS RAPID TRANSIT

GEARY BLVD  
BUS RAPID TRANSIT

TO: GOLDEN GATE BRIDGE  
& NORTH BAY  
LOMBARD STREET

JAPAN  
TOWN

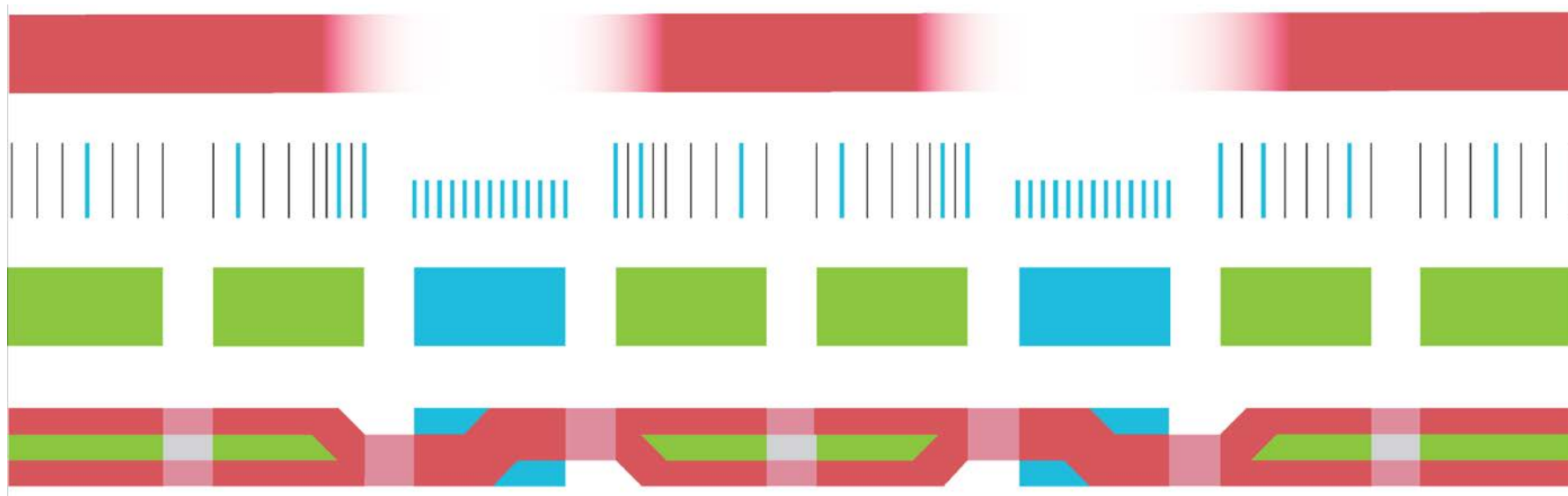
FORT MASON

CIVIC  
CENTER

FISHERMAN'S  
WHARF

MARKET STREET

CABLE CAR LINE



PLATFORM

PLATFORM



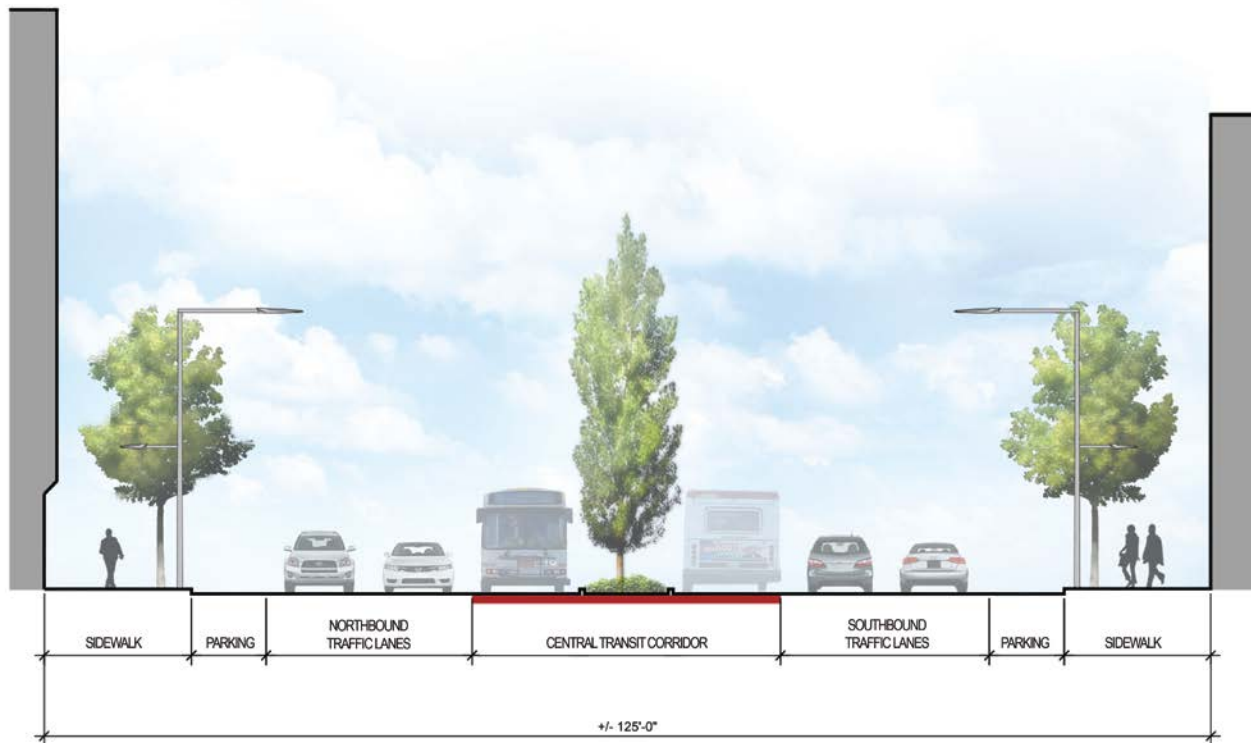
ARTIFICIAL ELEMENT



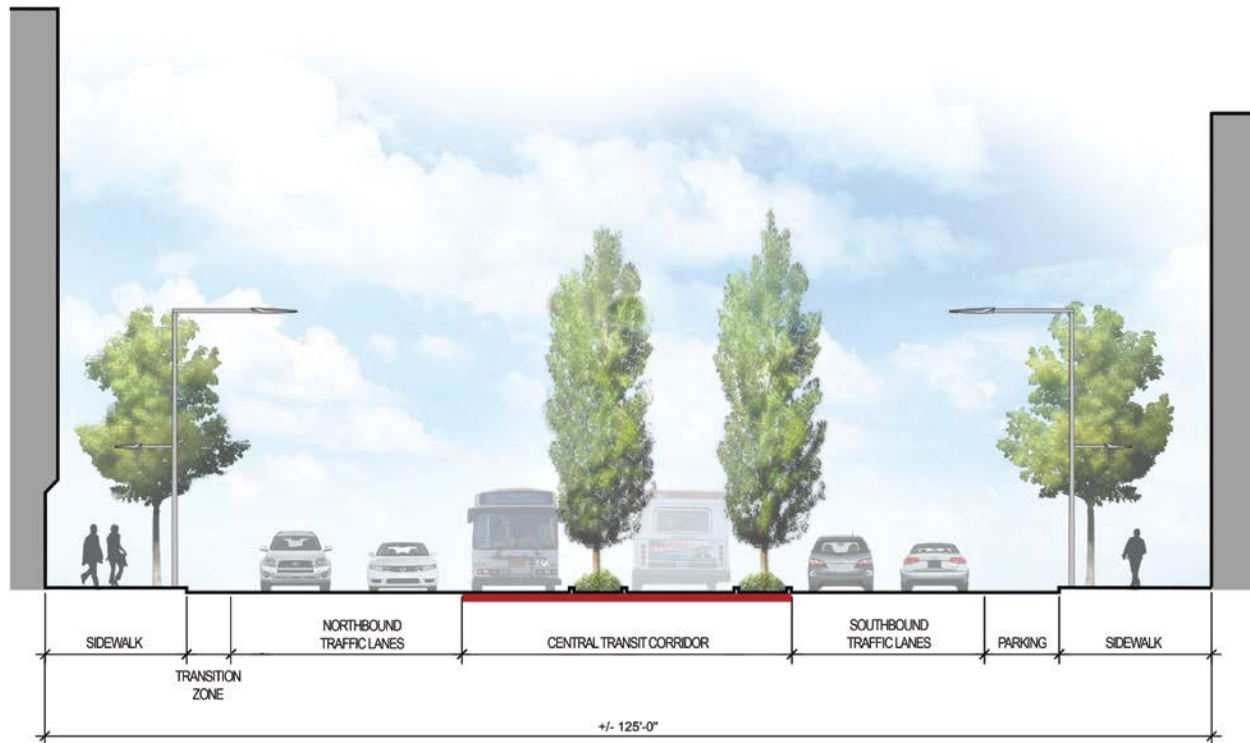
“NATURAL” ELEMENT



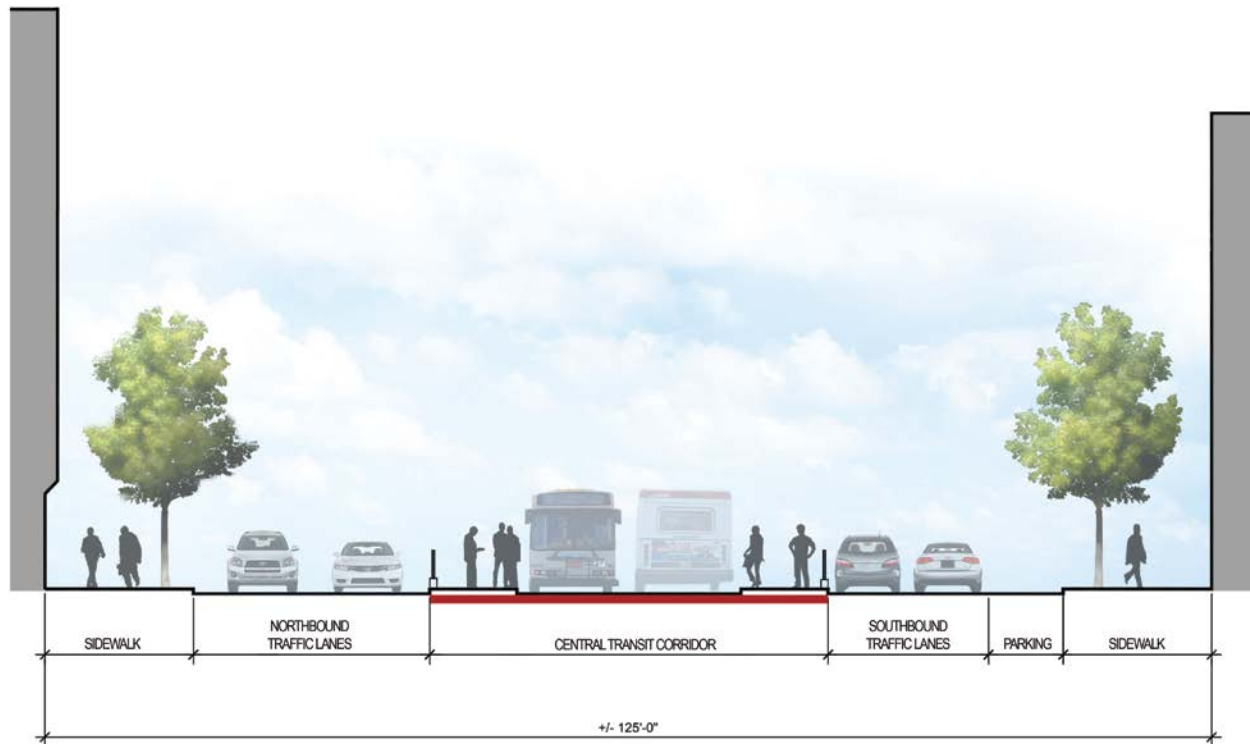




## VAN NESS BRT • SECTION A • NO PLATFORM



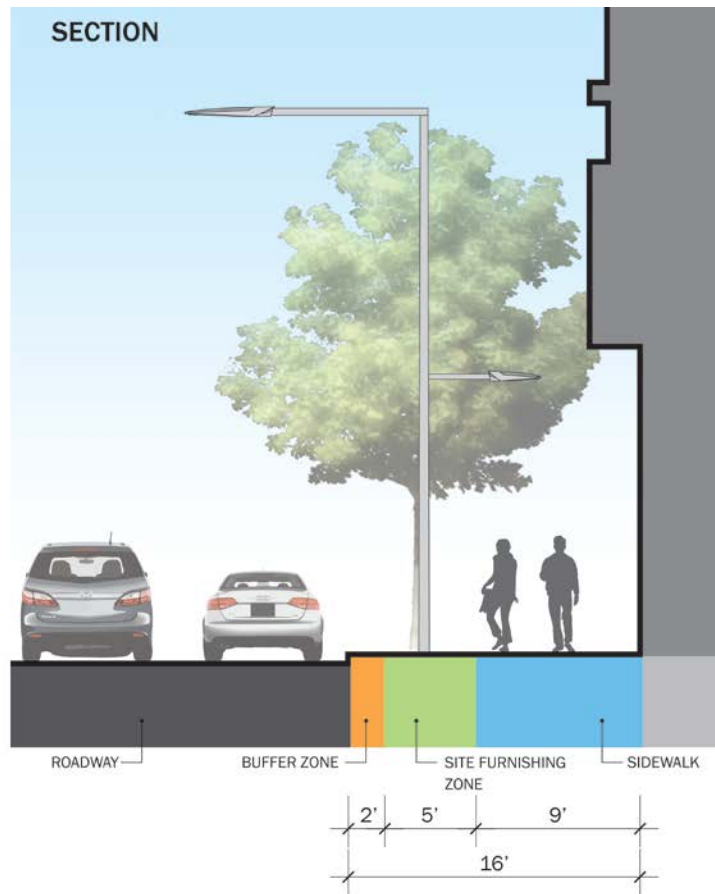
## VAN NESS BRT • SECTION B • DOUBLE PLANTING



## VAN NESS BRT • SECTION C • DOUBLE PLATFORM



## SECTION



## VAN NESS BRT • DESIGN ELEMENTS

## DESIGN ELEMENTS



SPECIAL PAVING



STREET TREES



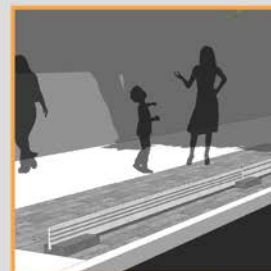
LIGHTING



BIKE RACK



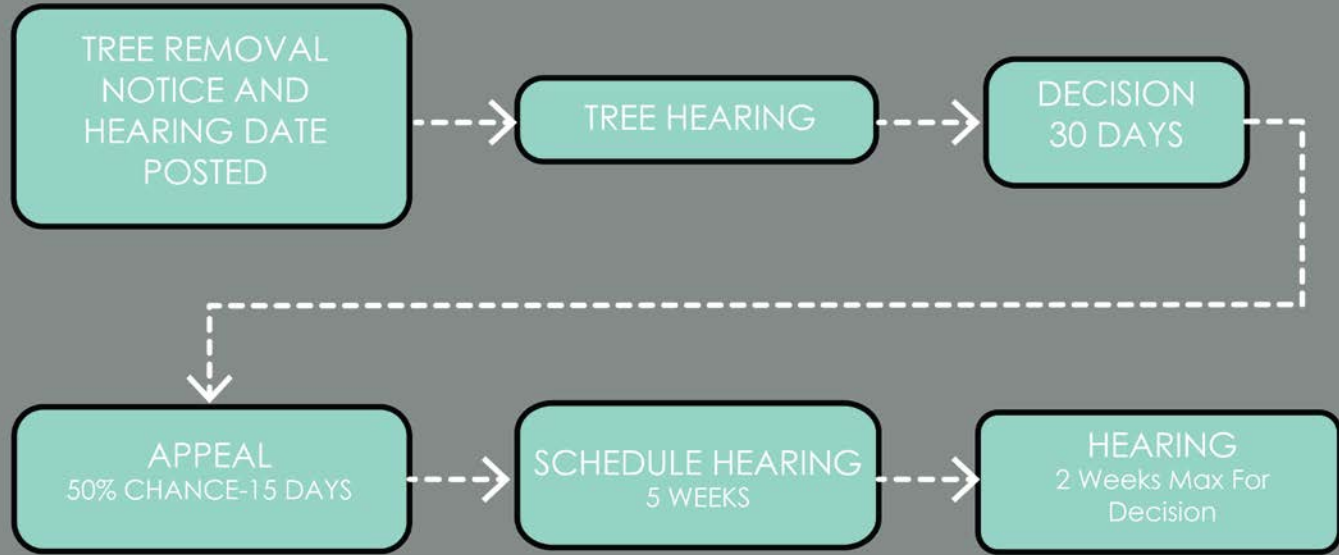
BUFFER EDGE TREATMENT  
OPTION A



BUFFER EDGE TREATMENT  
OPTION B

# TREE REMOVAL WORKFLOW

Timeframe: ~100 DAYS

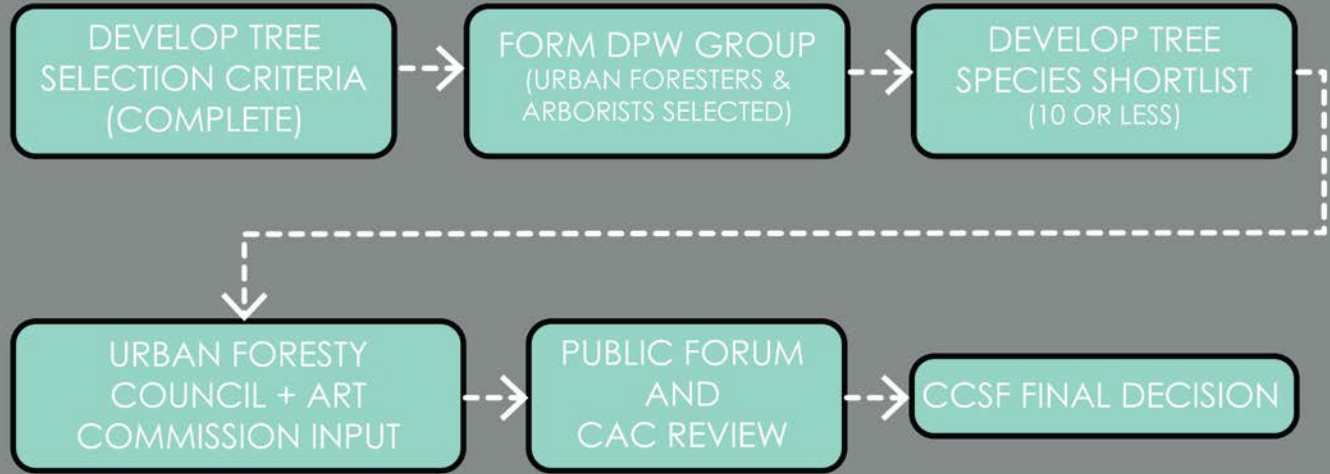


## VAN NESS BRT • TREE REMOVAL WORKFLOW



# TREE SELECTION WORKFLOW

Timeframe: 4 to 6 Months

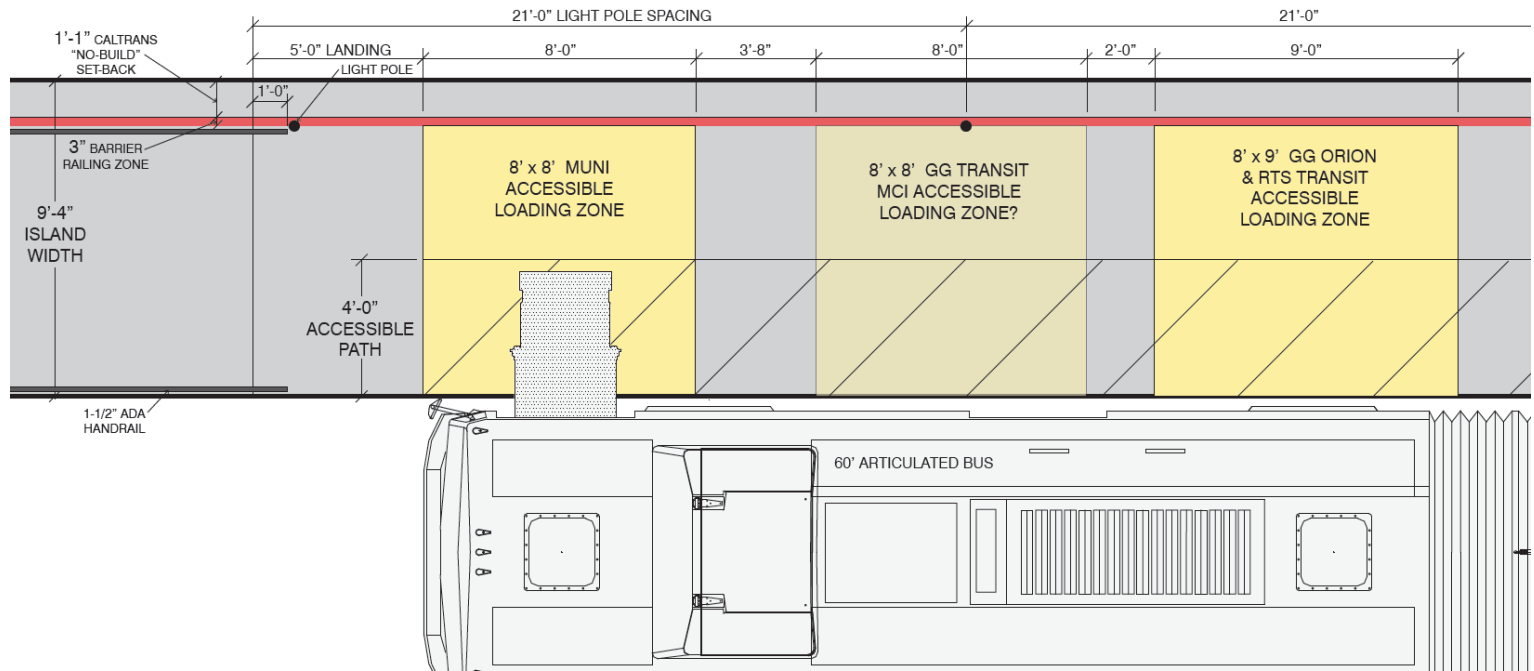
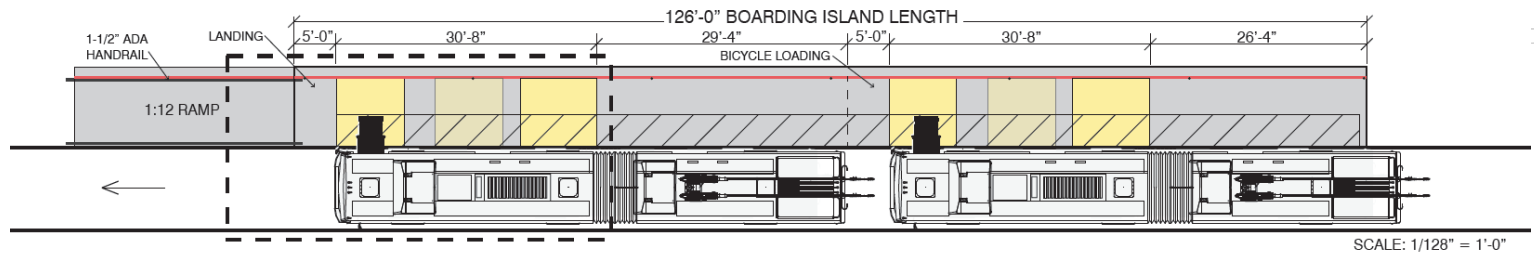


## VAN NESS BRT • TREE SELECTION WORKFLOW

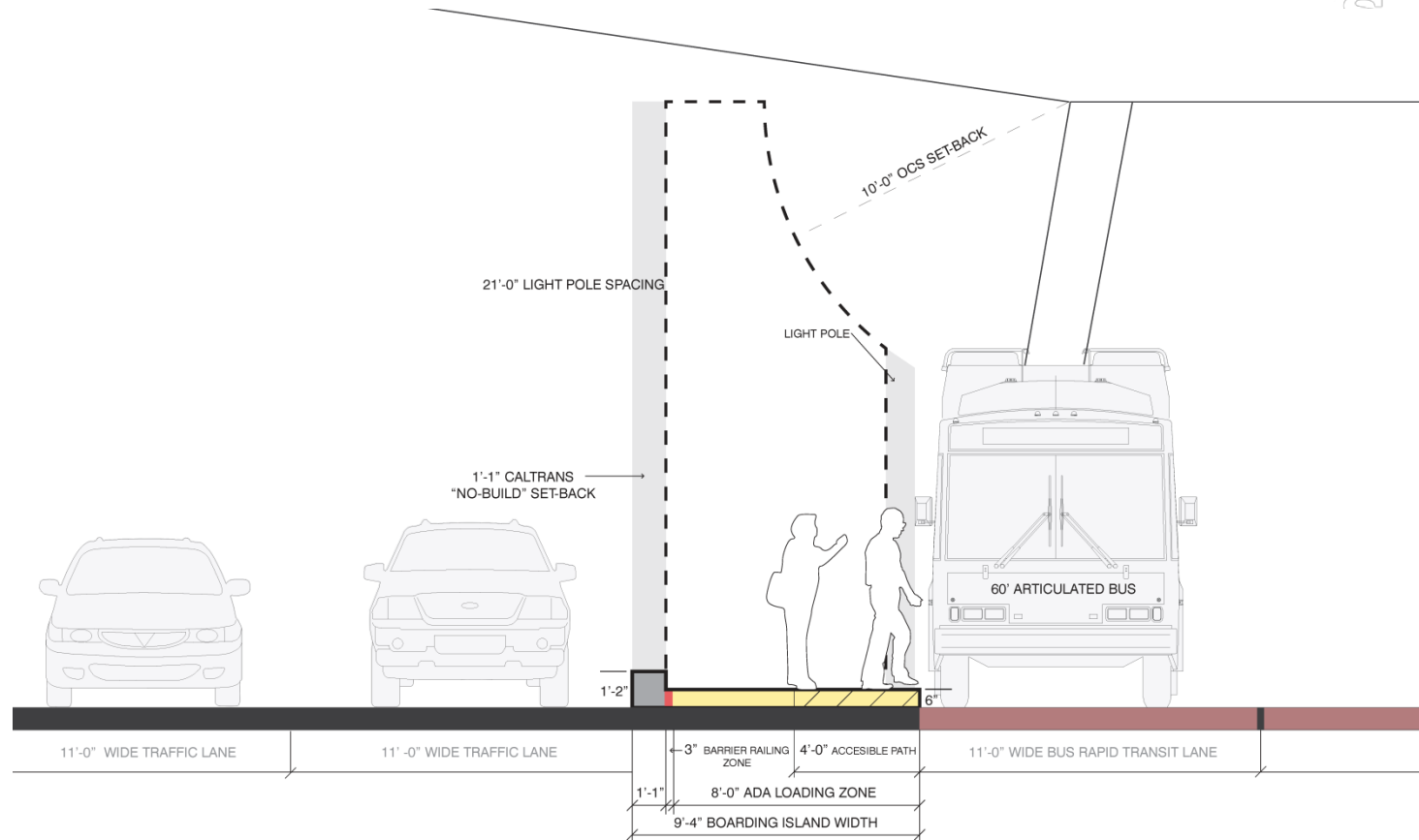


Tree Species	Common Name	Height	Scale/Size	Form	Urban Survivability	Wind/Fog Tolerance	Drought Tolerance	Caltrans Guidelines (OCS System)	Maintenance	Comments
Acer campestre 'Queen Elizabeth' (HS)	Queen Elizabeth Hedge Maple	30'	TO BE DETERMINED BY URBAN FORESTRY				Moderate	TO BE DETERMINED BY URBAN FORESTRY		Medium growth rate, withstands urban pollution, vase shaped.
Acer x freemanii 'Armstrong' (HS)	Armstrong Maple	30'					Moderate			Planted on Divisadero median. Very vertical, narrow habit
Carpinus betulus 'Fastigiata' (HS)	Hornbeam	30'					Moderate			Planted on Broadway and CCAC in Portero Hill.
Carpinus betulus 'Frans Fontaine' (HS)	Frans Fontaine Hornbeam	30-35'					Moderate			May due better as median tree than street tree.
Cupressus sempervirens 'Stricta' (HS)	Italian Cypress	40'					Low			Needs warmth to perform well. Needs pruning to look good. Slow
Ginkgo biloba 'Princeton Sentry' (HS)	Princeton Sentry Ginkgo	40-50'					Low			Gaining popularity, beautiful tough tree.
Juniperus scopulorum 'Skyrocket' (HS)	Skyrocket Juniper	15-20'					Low			Very formal conifer.
Juniperus virginiana 'Hillspire' (HS)	Hillspire Juniper	10-15'					Low			Use for accent too small otherwise
Koeleruteria paniculatum 'Fastigiata' (HS)	Goldenrain Tree	25'					Moderate			Check out the ones on Berry Street.
Magnolia G.' Majestic Beauty' or 'Russet'	Southern Magnolia	40' - 60'					Low			Tough and sturdy, nice clean shiny foliage
Populus alba 'Pyramidalis' (HS)	White Poplar	50-60'					Moderate			Would grow very well but could root issues be mitigated?
Prunus sargentii 'Columnaris' (HS)	Sargent Cherry	25'					Moderate			Withstand the wind? Planting on Lombard reservoir doing poorly.
Pyrus calleryana 'Whitehouse' (HS)	Gallery Pear	30'					Moderate			Fireblight?
Quercus robur 'Fastigiata' (HS)	English Oak	40'					Moderate			Could be a possibility, other Oaks are planted on Van Ness.
Eucalyptus citriodora	Lemon-Scented Gum	35-40'					Low			Grows well, good specimens at Mission/Duboce. Availability?
Lophostemon confertus	Brisbane Box	40'					Low			Will perform well, planted already along corridor
Pinus canariensis	Canary Island Pine	50-80'					Low			Good form, planted on Portola
Tillia cordata and tomentosa	Linden	30'- 40'					Moderate			Very promising, needs research, will it take the wind
Trachycarpus fortunei	Windmill Palm	25'					Low			Smaller accent tree
Washingtonia filifera	California Fan Palm	40'					Low			Performs well. Can plant full size
Washingtonia robusta	Mexican Fan Palm	60-80'					Low			Already on S. Van Ness, Market to Mission.

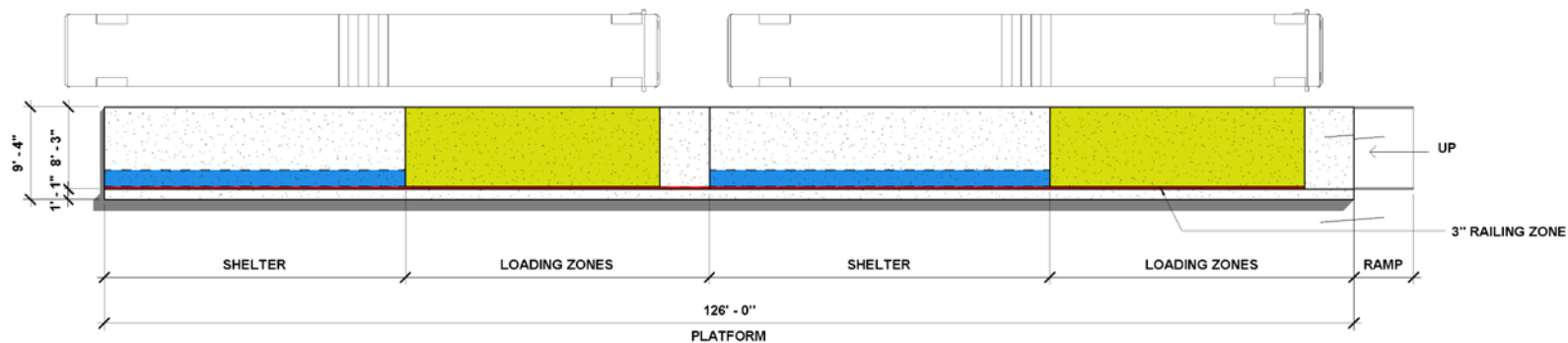
## VAN NESS BRT • TREE SELECTION CRITERIA

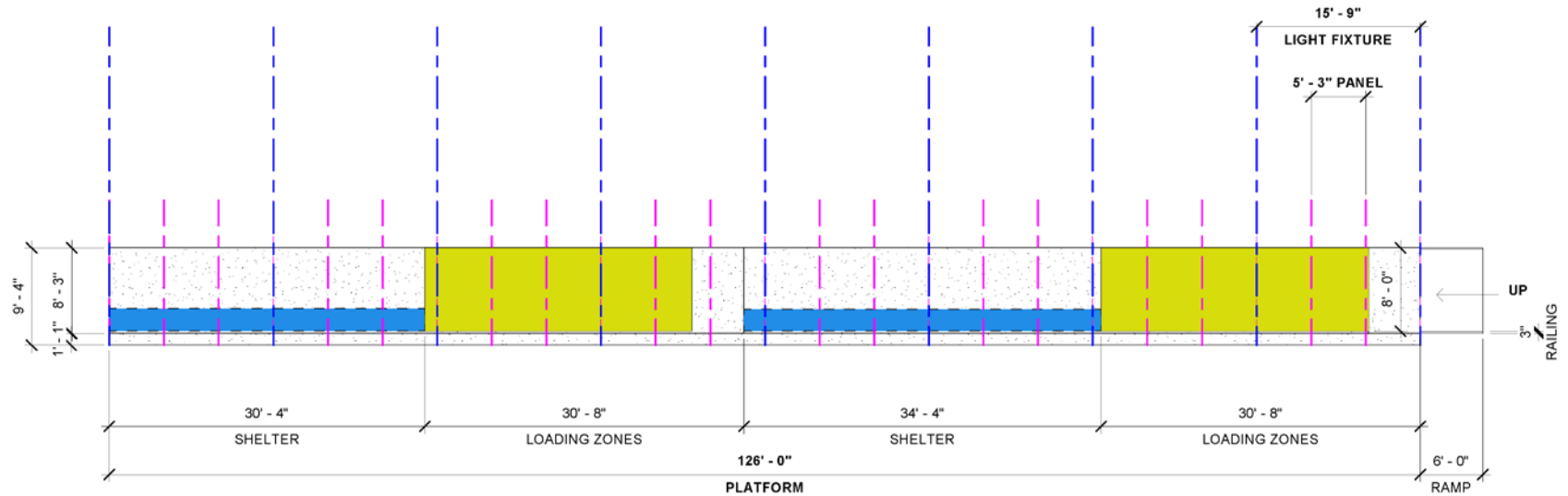


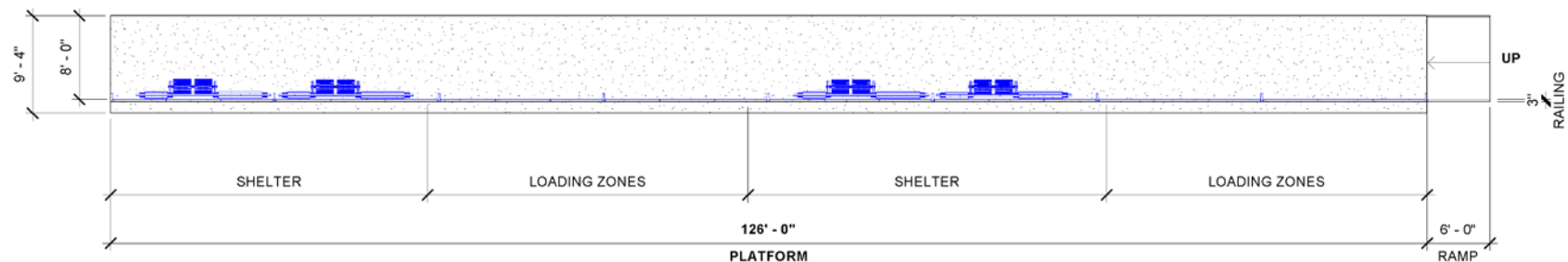


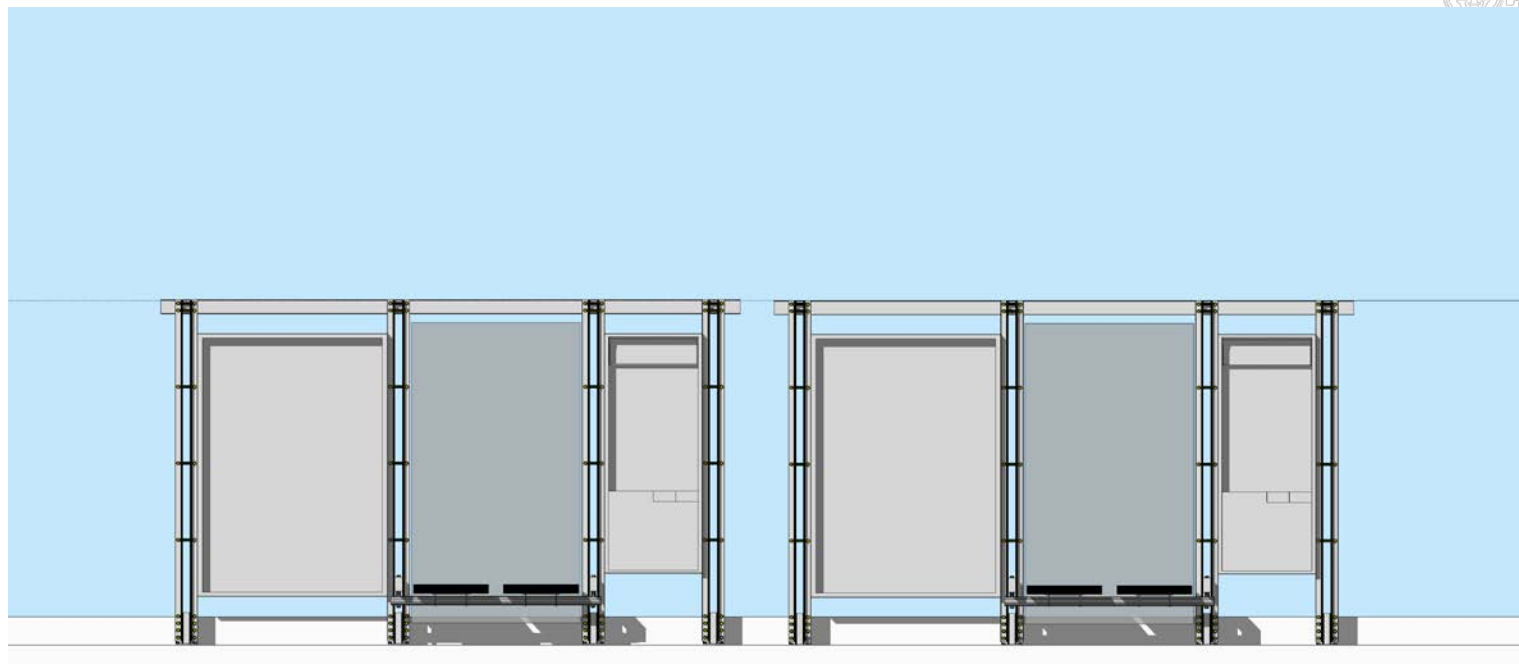


SCALE: 1/32" = 1'-0"

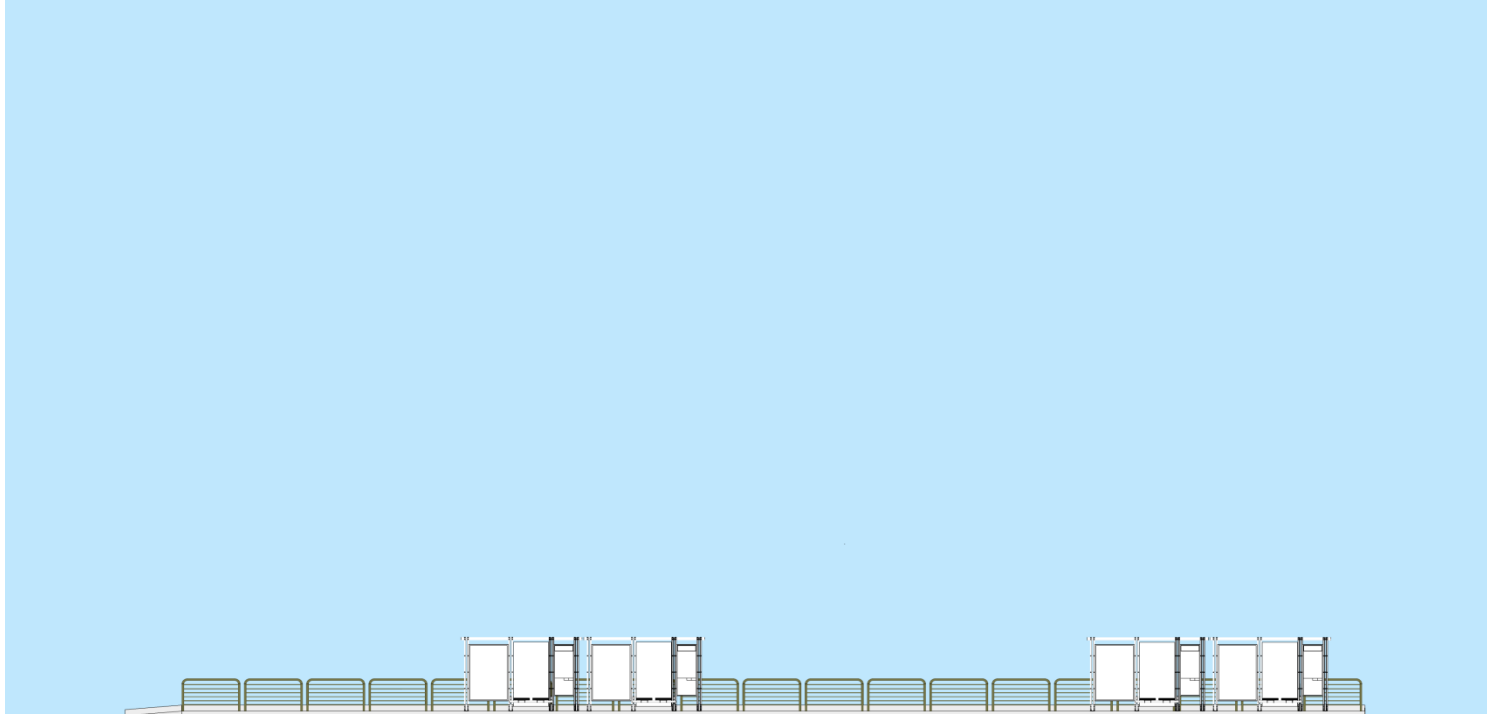






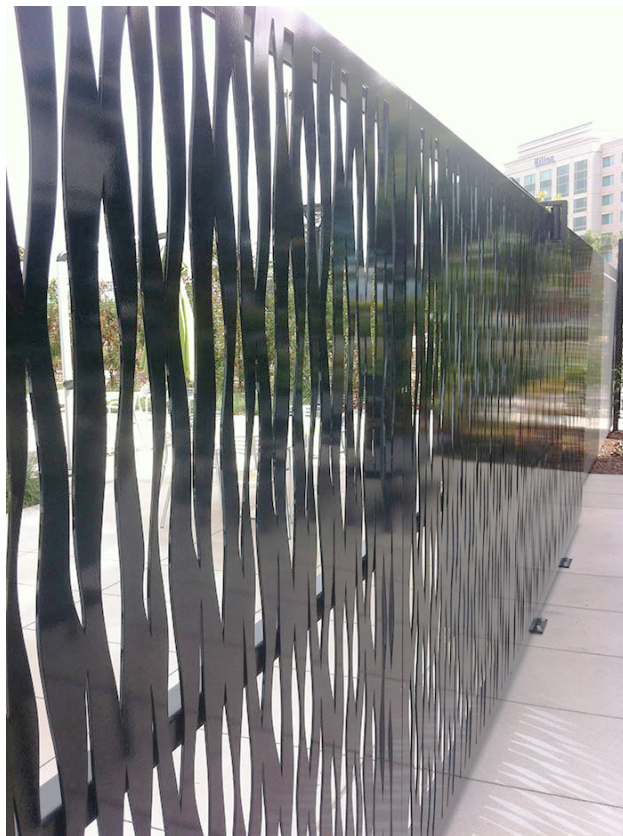




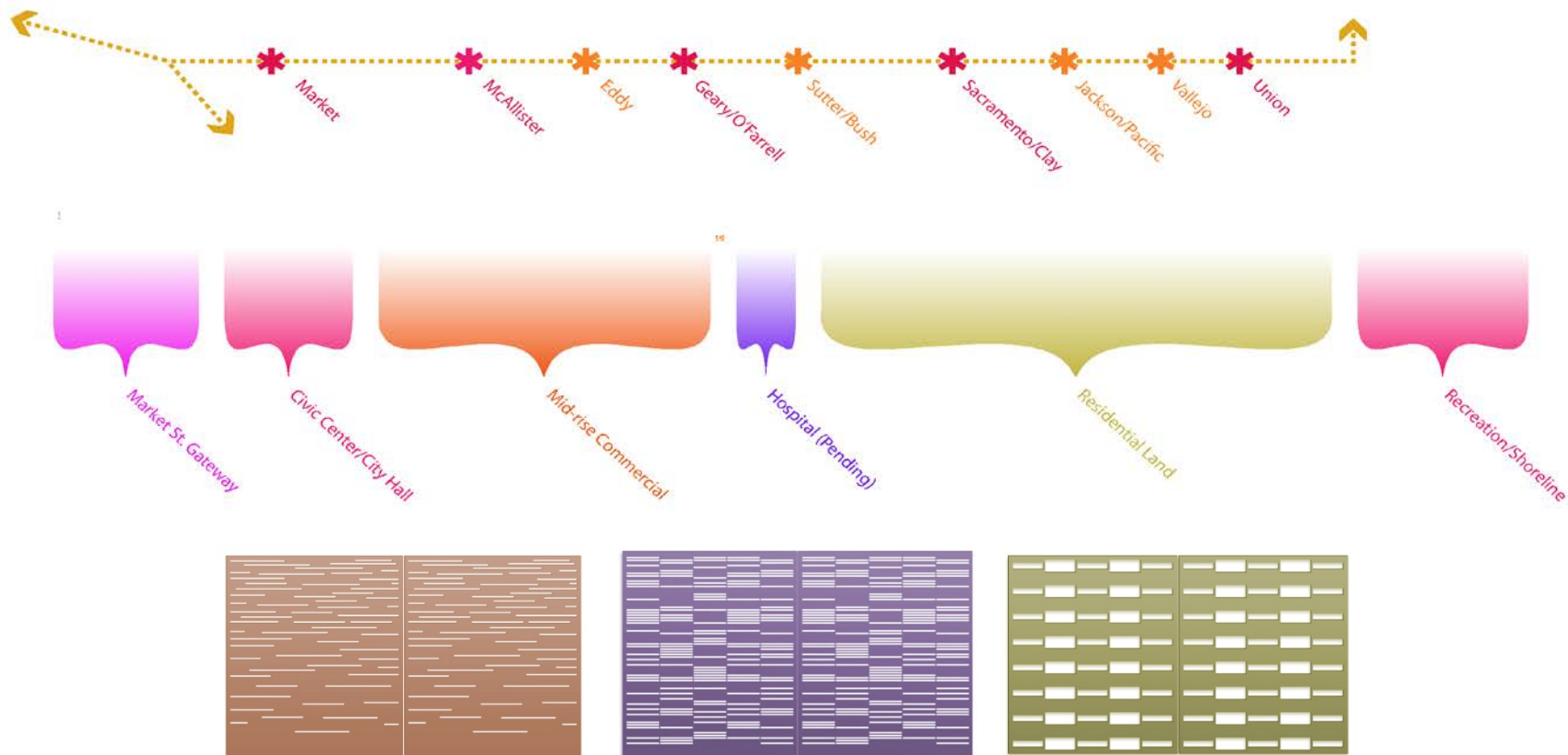




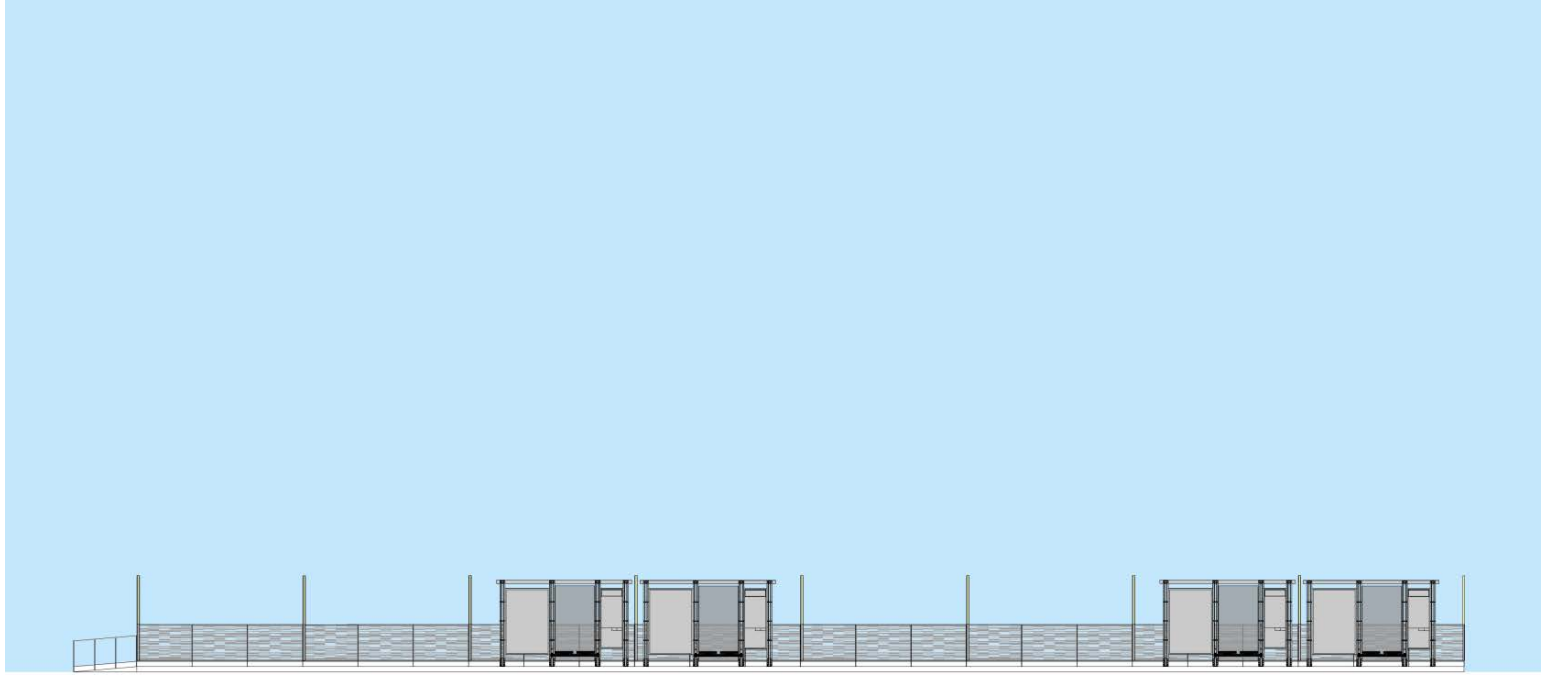


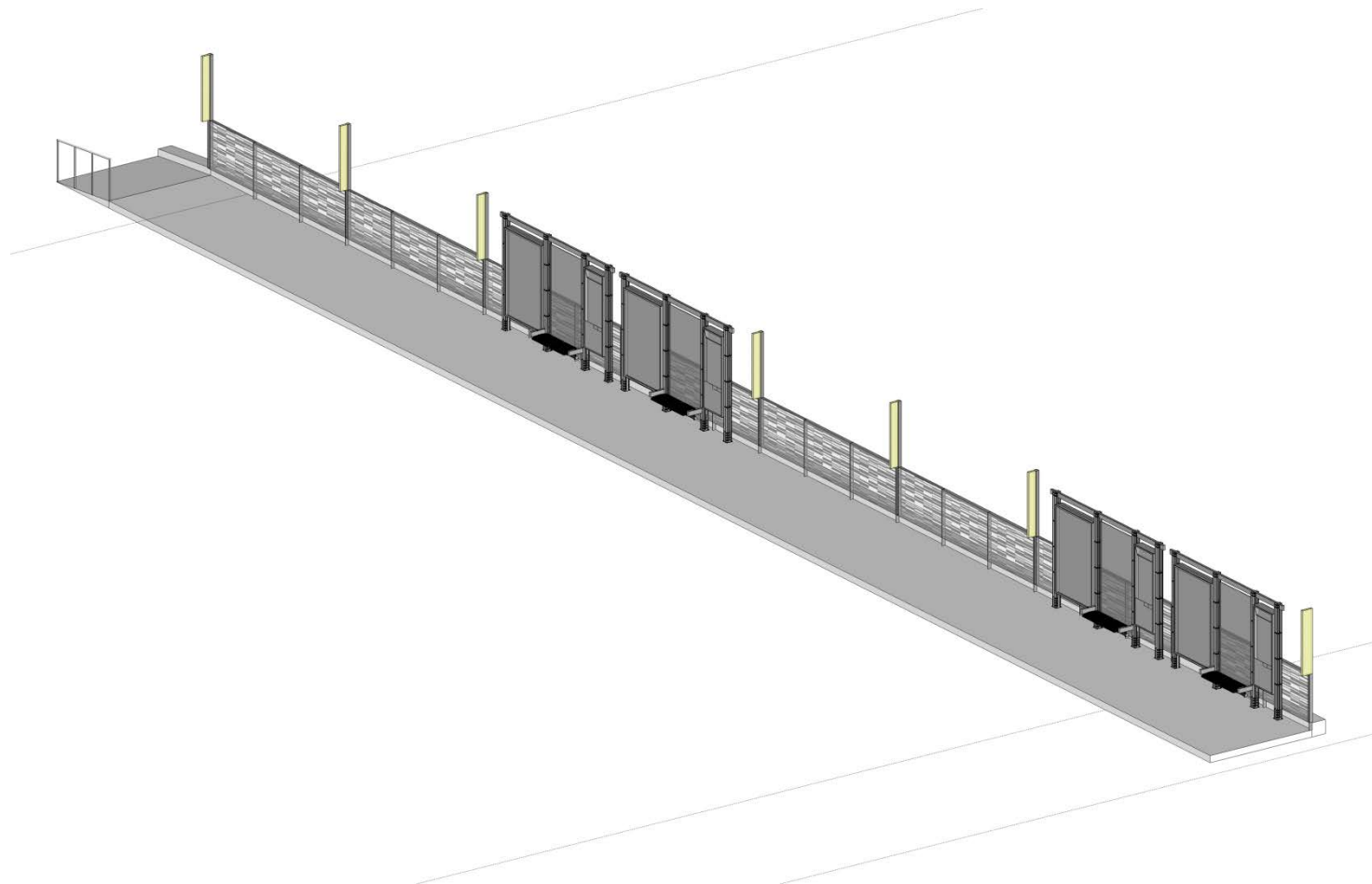


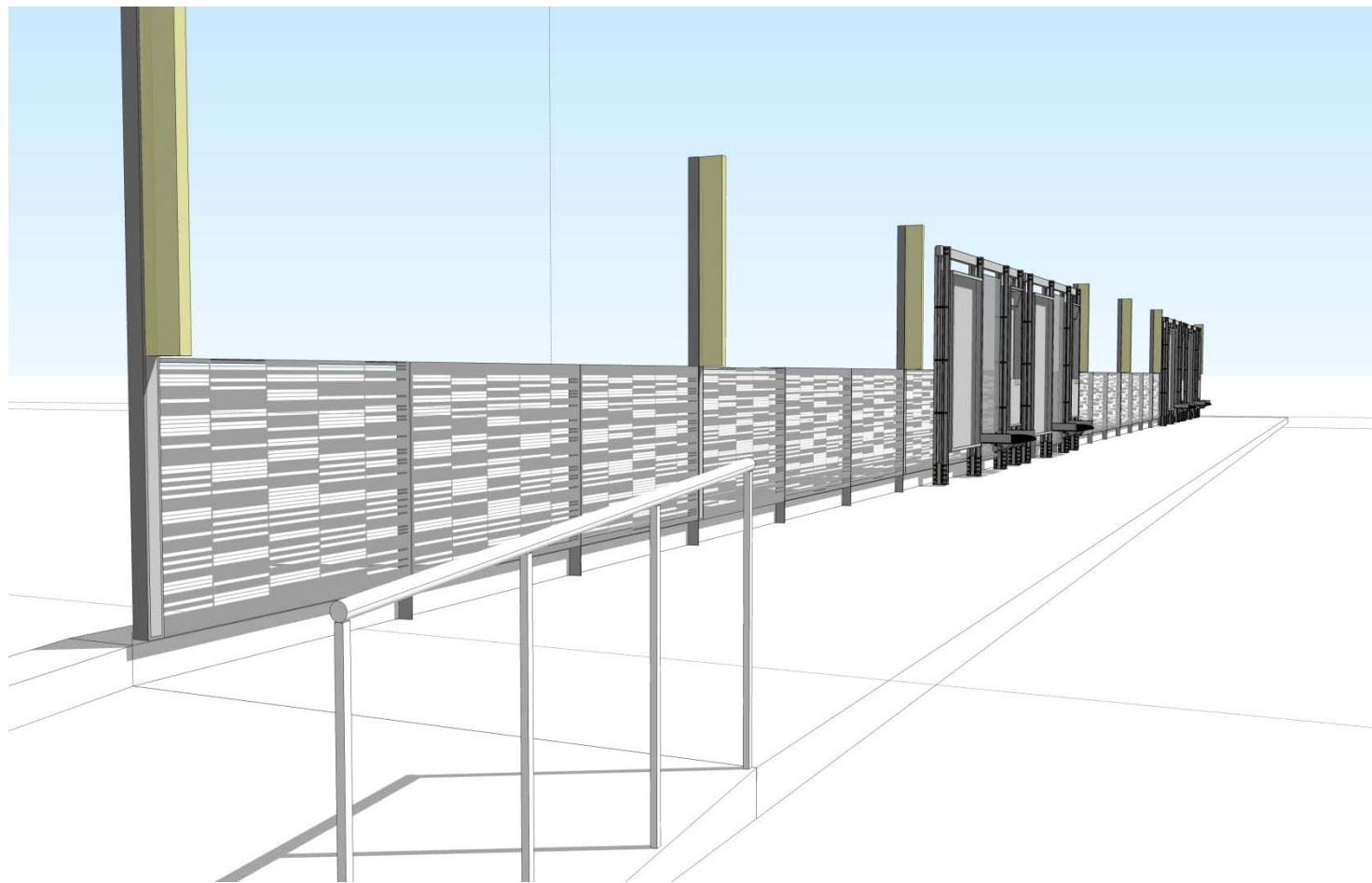










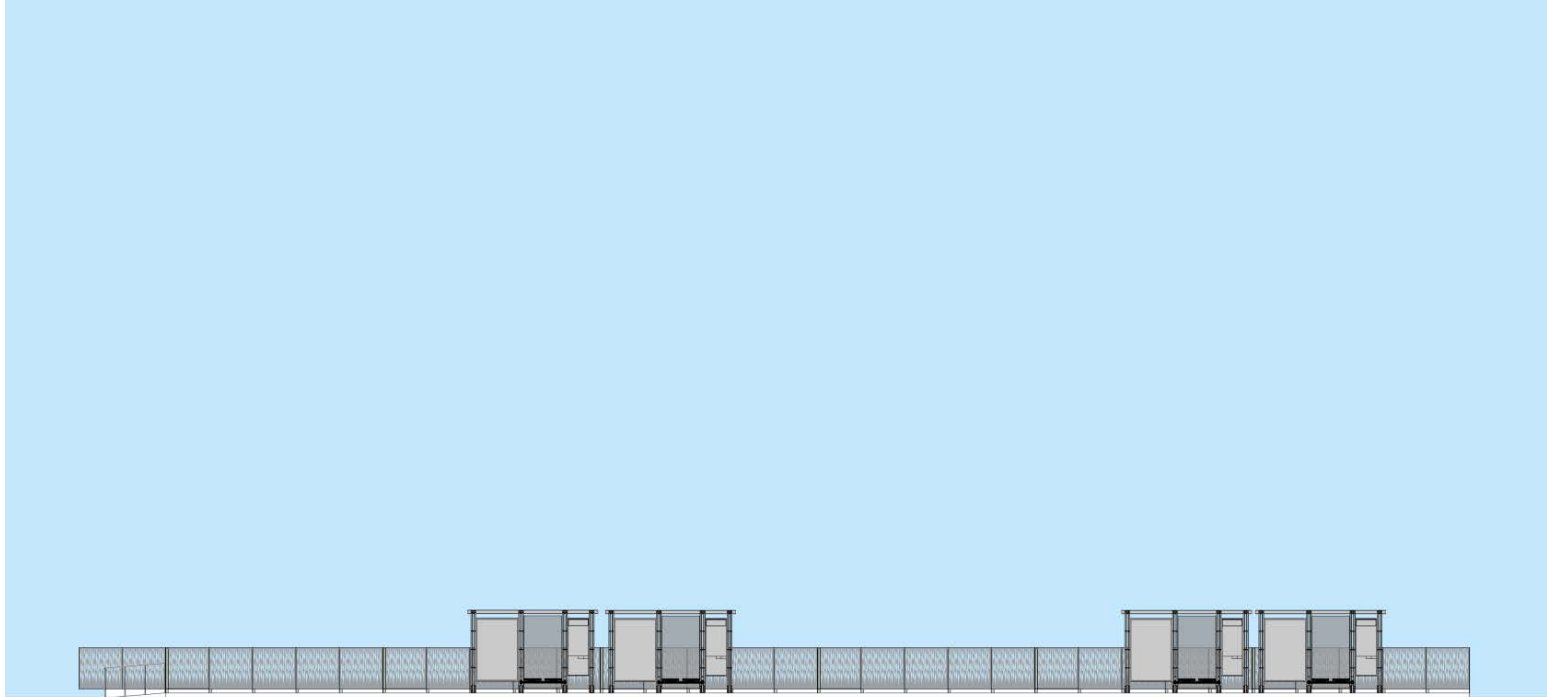


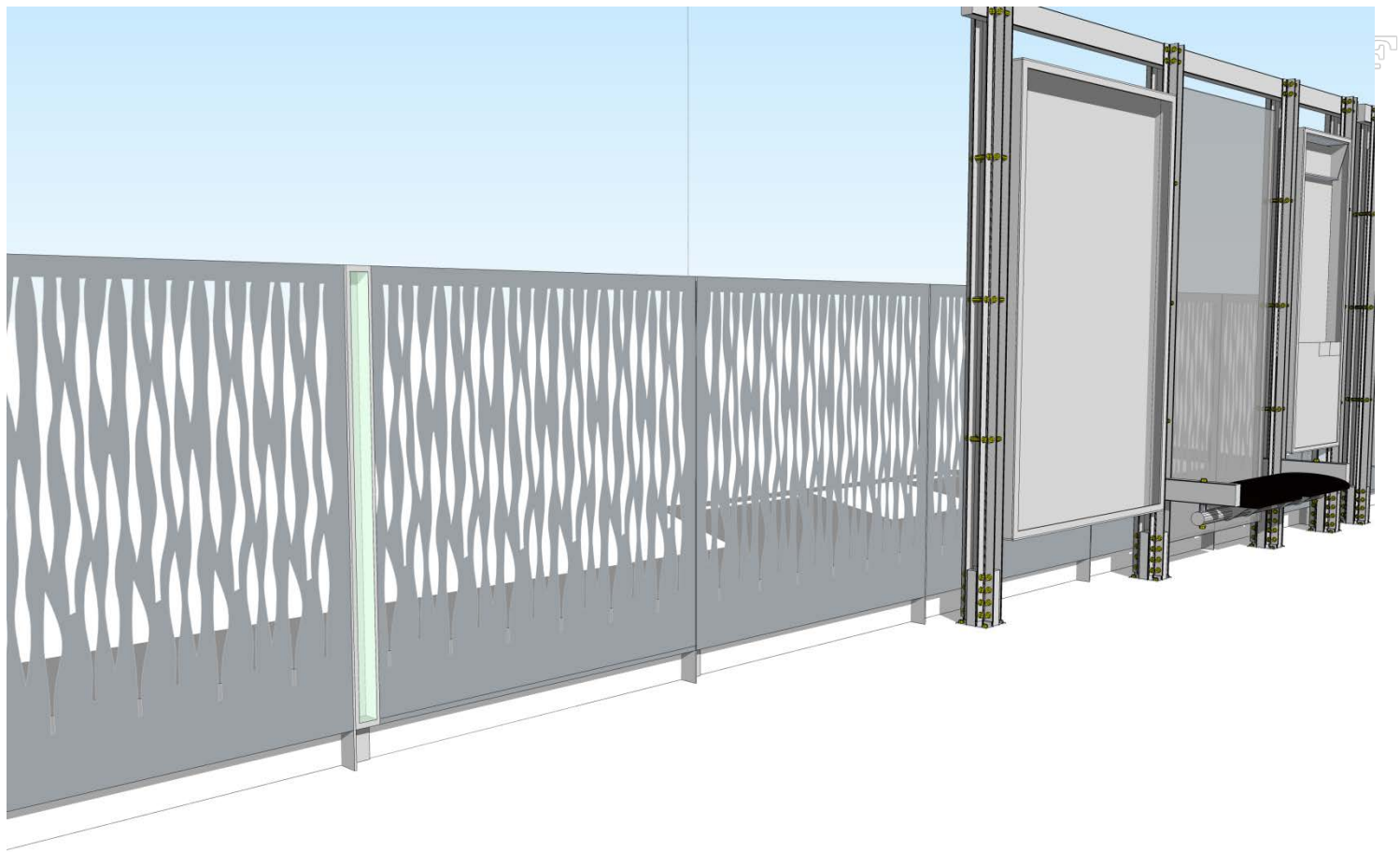






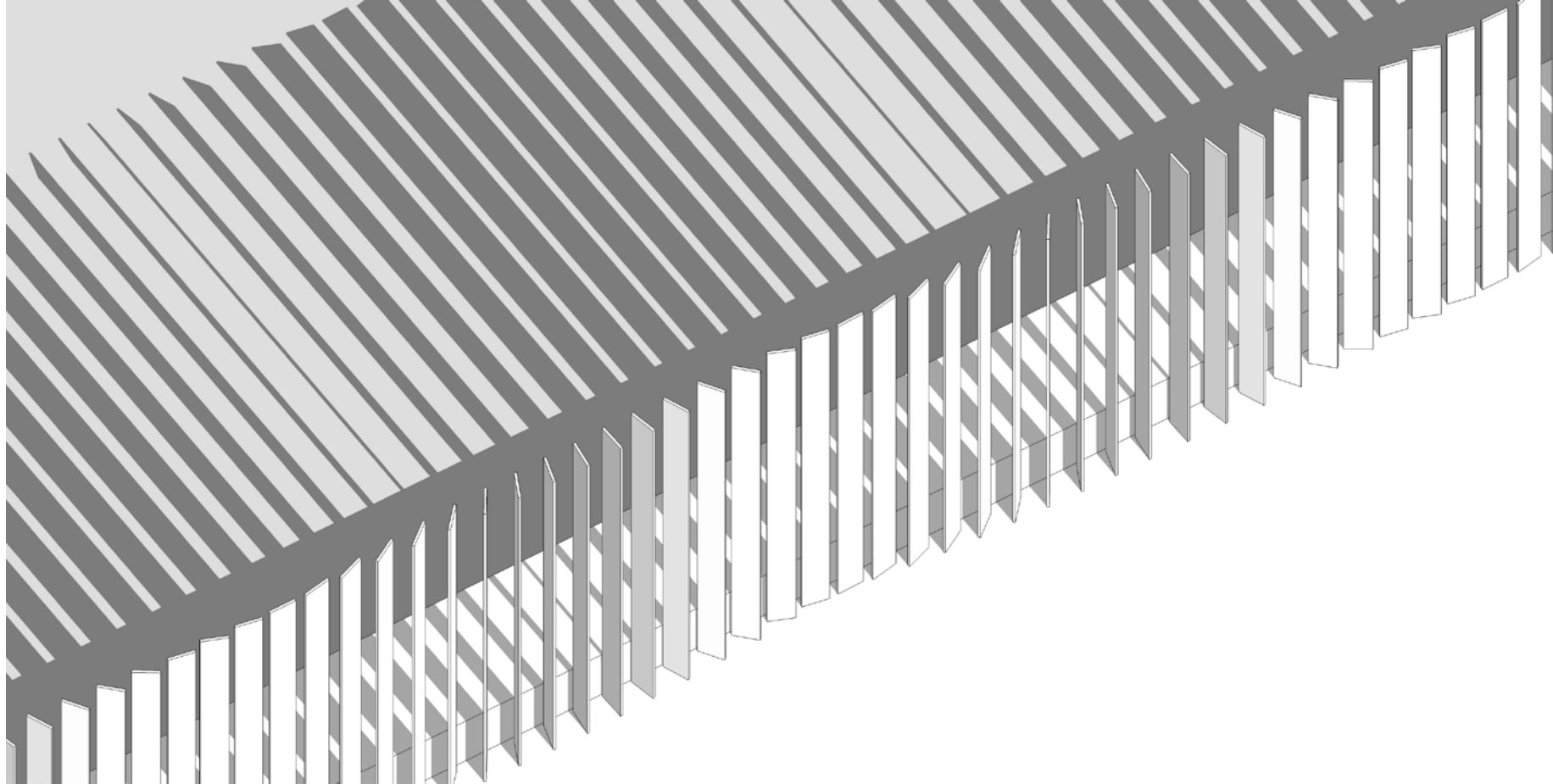








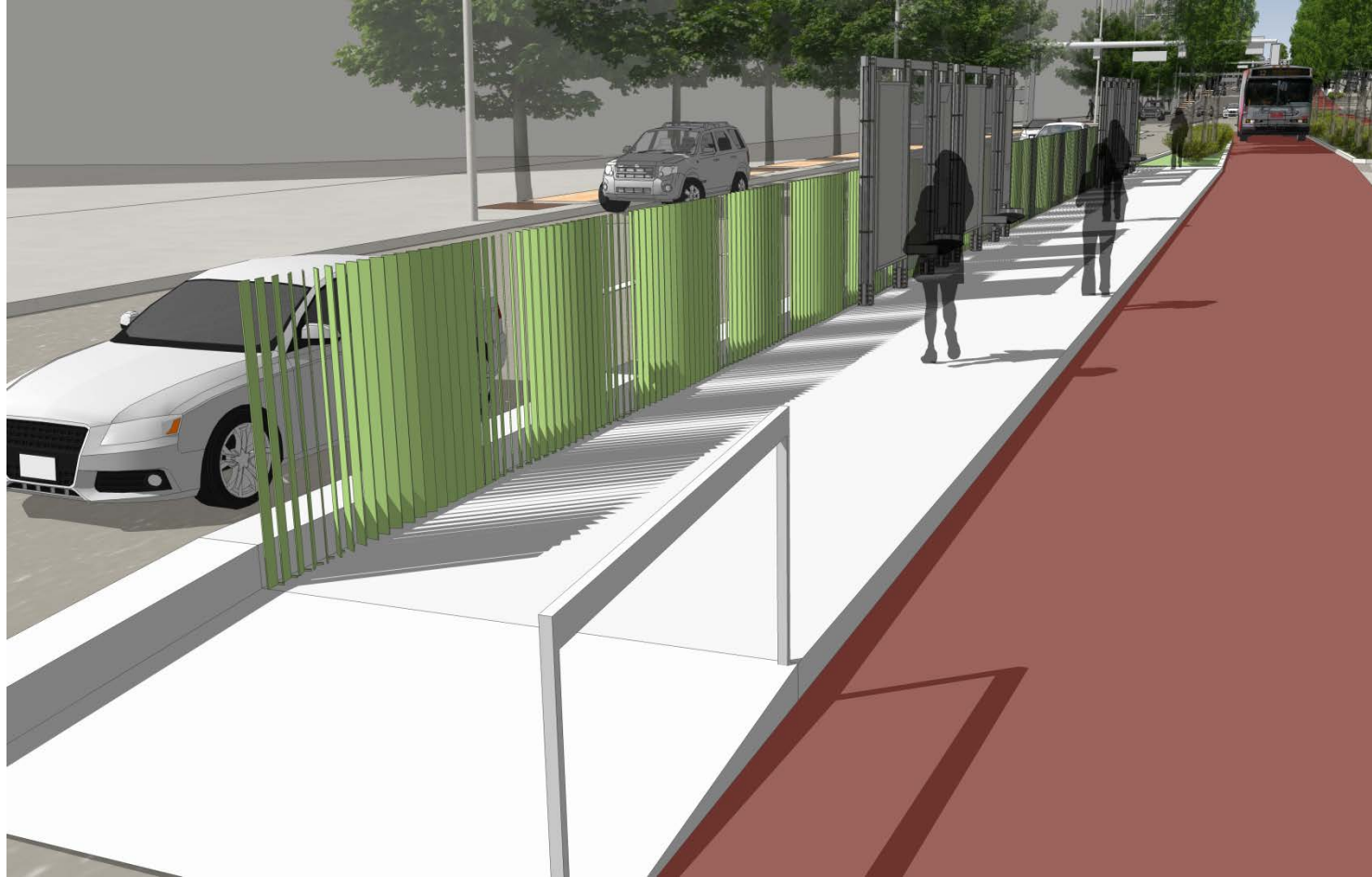


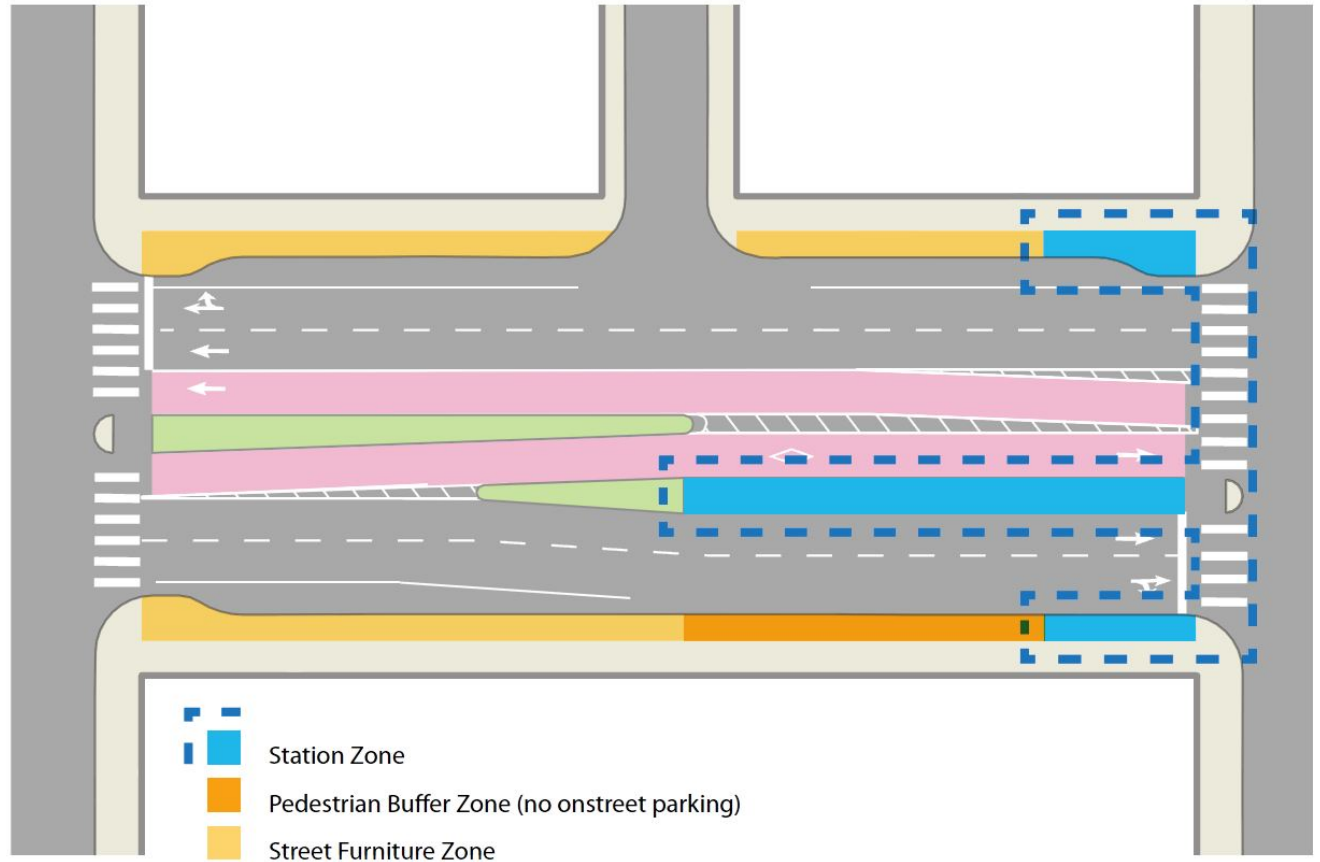














## VAN NESS BRT • BUFFER EDGE TREATMENT OPTION A





## VAN NESS BRT • BUFFER EDGE TREATMENT OPTION B



## VAN NESS BRT • TRANSIT ZONE PAVING