

received 5/9/12
from Rebecca Delgado

Non-c conformance and threat to public safety: See Exhibit 2 and SF Arts Commission Street Artists Program Certification and Sales Space Assignment Procedures, pages 34 -37.

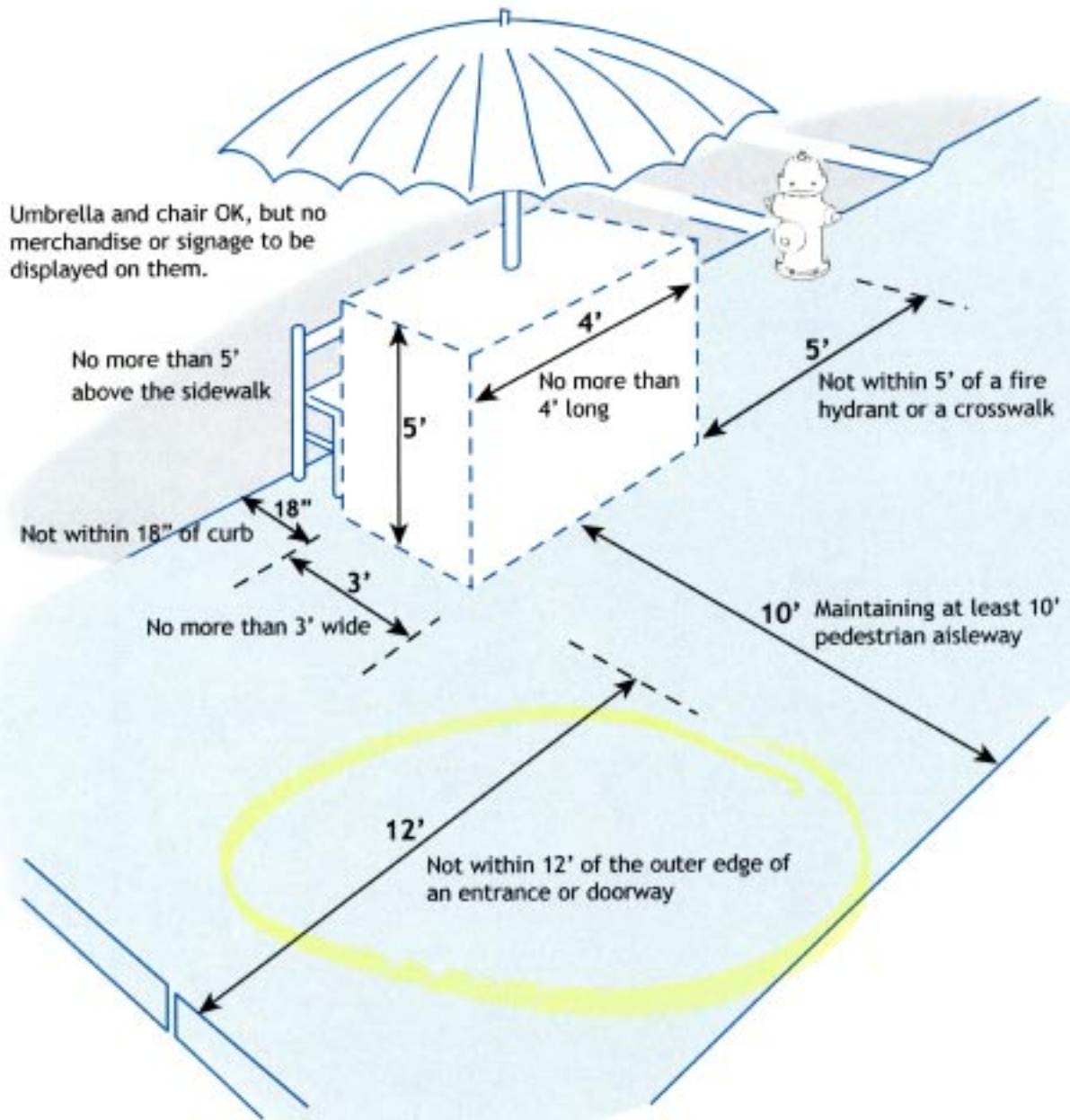
- Public Safety:
 - a. Obstruction of emergency and exit doors
 - b. Not meeting 12' of the outer edge of an entrance or doorway
 - c. Possible Obstruction of the sprinkler inlet, and
 - d. Foot traffic constriction

- Suggested Solution – See Exhibit 5
 - a. Currently there are 10 Approved designated spaces on Leavenworth (LV1 through LV10).
 - b. Only two out of 10 are active.
 - c. Even with the 'elimination of LV1, there are still nine (9) spaces available.
 - d. However, only two spaces are being used out of the 10 (or 8) approved spaces.



Exhibit 1

Basic SF city regulations governing the size of street artists' displays



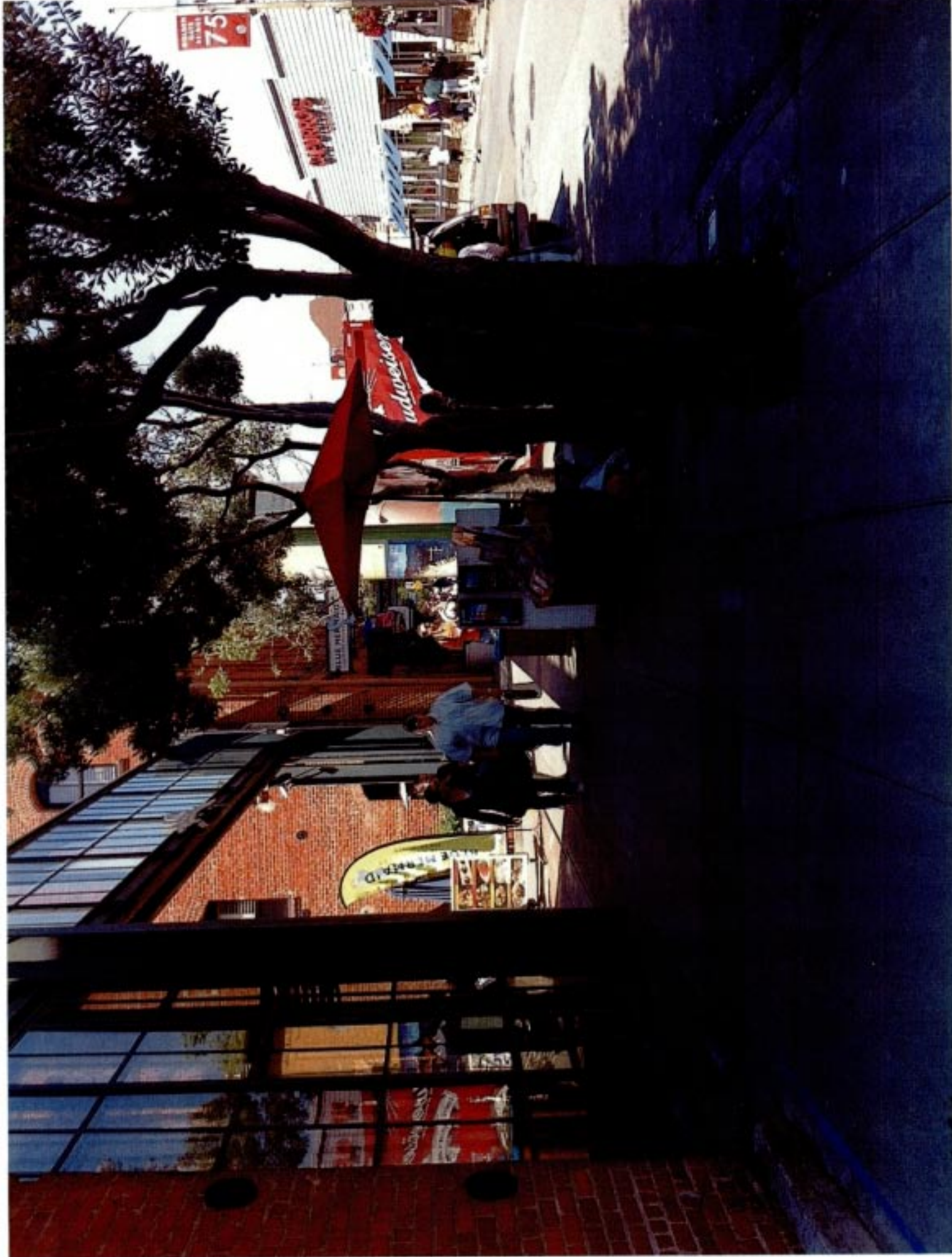


Exhibit 3



Exhibit 4

Map 5: SF Street Artists Program Selling Area Spaces: Leavenworth between Jefferson and Beach

