

CANVAS OR UV BANNER MATERIAL
1 x 1 ALUMINUM FRAME

ALUMINUM SHROUD CLEAR FINISH

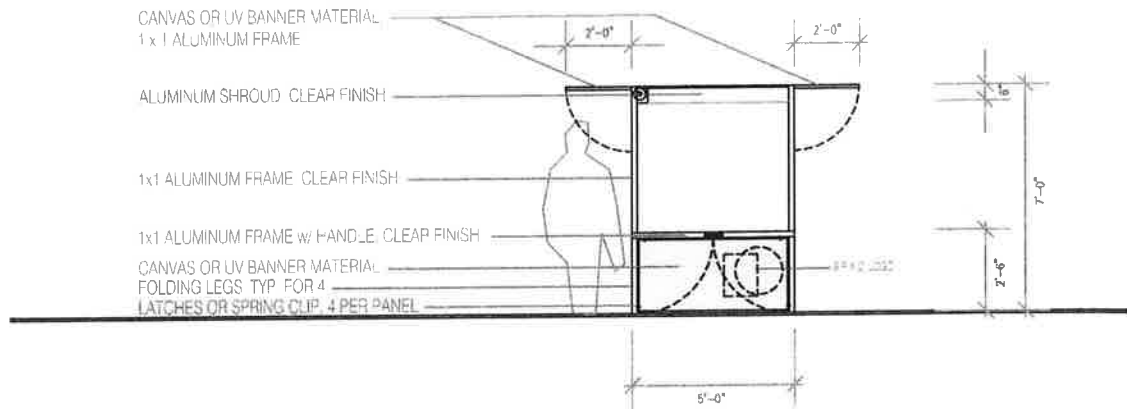
1x1 ALUMINUM FRAME CLEAR FINISH

1x1 ALUMINUM FRAME w/ HANDLE CLEAR FINISH

CANVAS OR UV BANNER MATERIAL

FOLDING LEGS TYP. FOR 4

LATCHES OR SPRING CLIP 4 PER PANEL



LONG ELEVATION

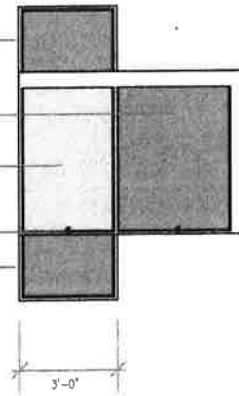
CANVAS OR UV BANNER MATERIAL
HORIZONTALLY CAPTURED (OPTIONAL)

CANVAS OR UV BANNER MATERIAL
HORIZONTALLY CAPTURED (OPTIONAL)

CANVAS OR UV BANNER MATERIAL
HORIZONTALLY CAPTURED

LATCH

CANVAS OR UV BANNER MATERIAL
HORIZONTALLY CAPTURED (OPTIONAL)



NOTE: ALL CANVAS OR UV BANNER MATERIAL
TO BE COLOR #2

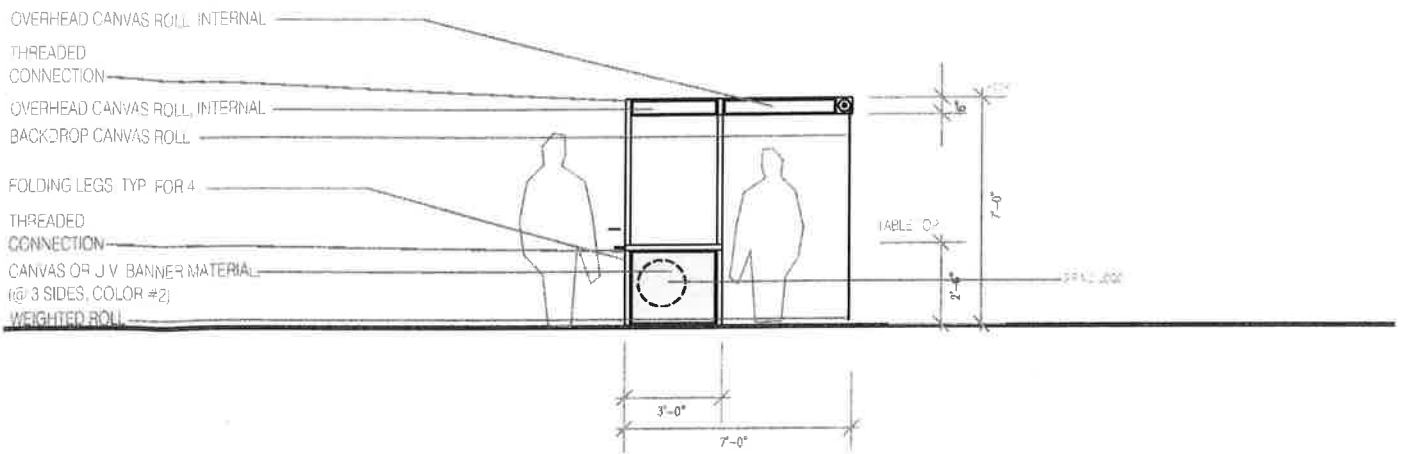
TOP VIEW

Project:

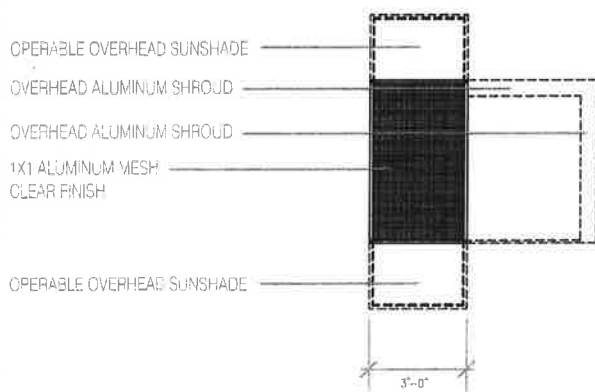
ARTIST'S TABLES

HALLIDIE PLAZA, SAN FRANCISCO
POWELL AND MARKET STREETS

Client:



SIDE ELEVATION



PLAN @ TABLE TOP HEIGHT

COLOR INDEX

(Color to be Shop Applied, "TigerCoat" Powder Coating, Min. 2 Finish Coats and Clear Sealed)

	To Match Sample	Scope
COLOR #1:	Clear Alum.	Legs, Frame, Shroud, Mesh
COLOR #2:	Blue 1	Canvas
COLOR #3:	Blue 2	(Alternate Color), Canvas

ION SQUARE BID
ARTS COMMISSION

OSC.A

OFFICE of STEPHAN CULLA ARCHITECTURE and Building Workshop
445 Leavenworth Street, San Francisco, CA 94102
415.774.1111

Date:	Project No.	Revisions:	Sheet No.
05.10.2012	20001-45		A