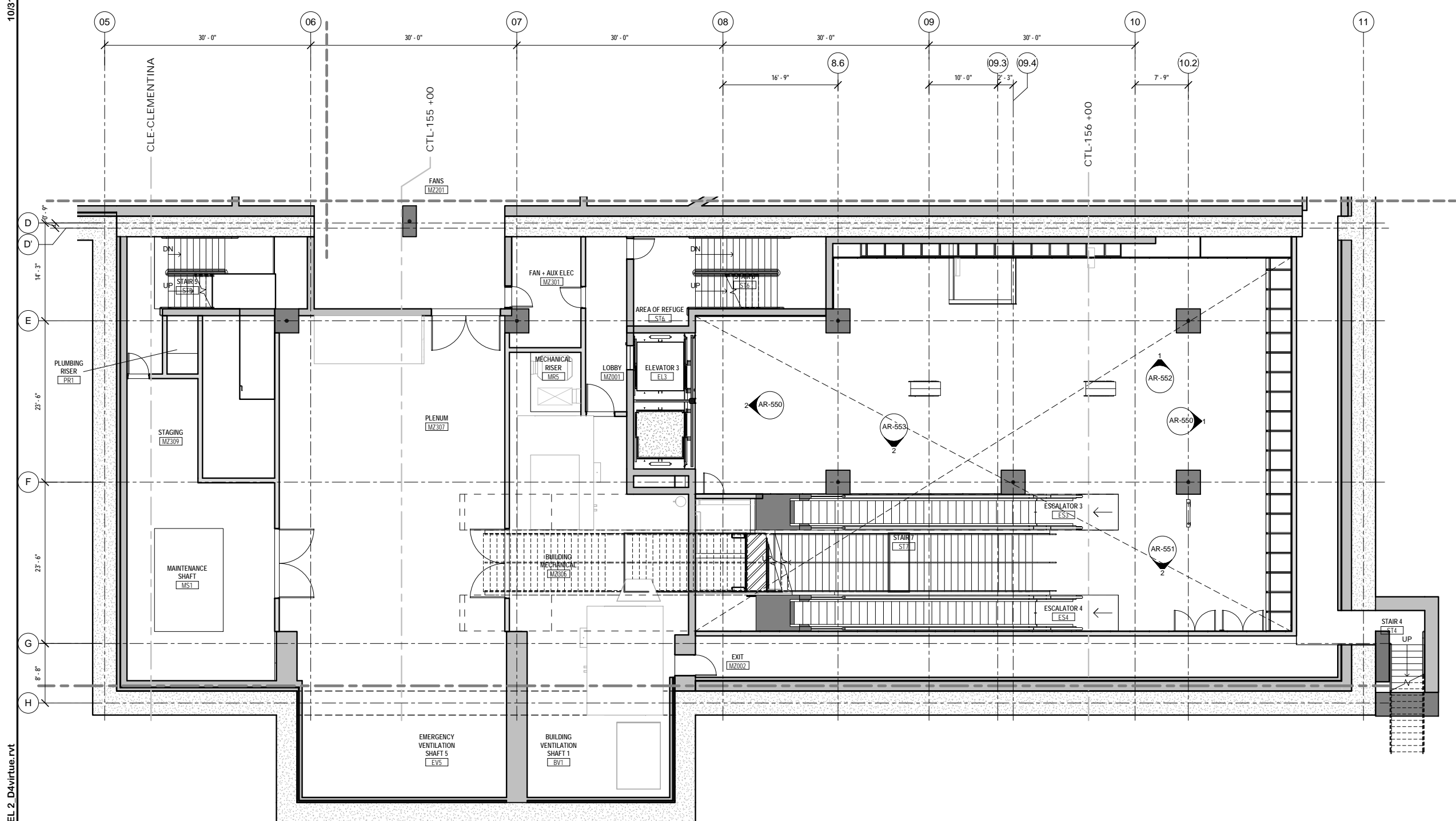


10/31/2011 3:38:19 PM



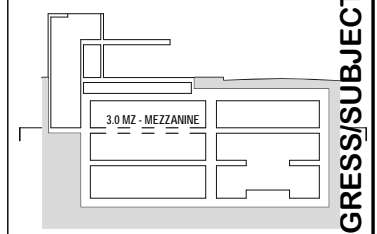
1 FINISH PLAN - 3.0 MEZZANINE - SECTOR 3
AR-243 1/8" = 1'-0"



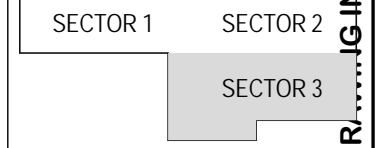
GENERAL NOTES

SHEET NOTES

SECTION KEY



KEY PLAN



DRAWING IN PROGRESS SUBJECT TO CHANGE

C:\Users\ID4virtue\Documents\1544_MOS_AR_MODEL_2_D4virtue.rvt

DATE	DESCRIPTION	REV. NO.	BY	CHECKED	APPROVED
10/31/2011	90% INTERDISCIPLINARY REVIEW SET	0A			
04/22/2011	PROGRESS PRINT				
12/07/2010	65% DESIGN SUBMITTAL	0A			

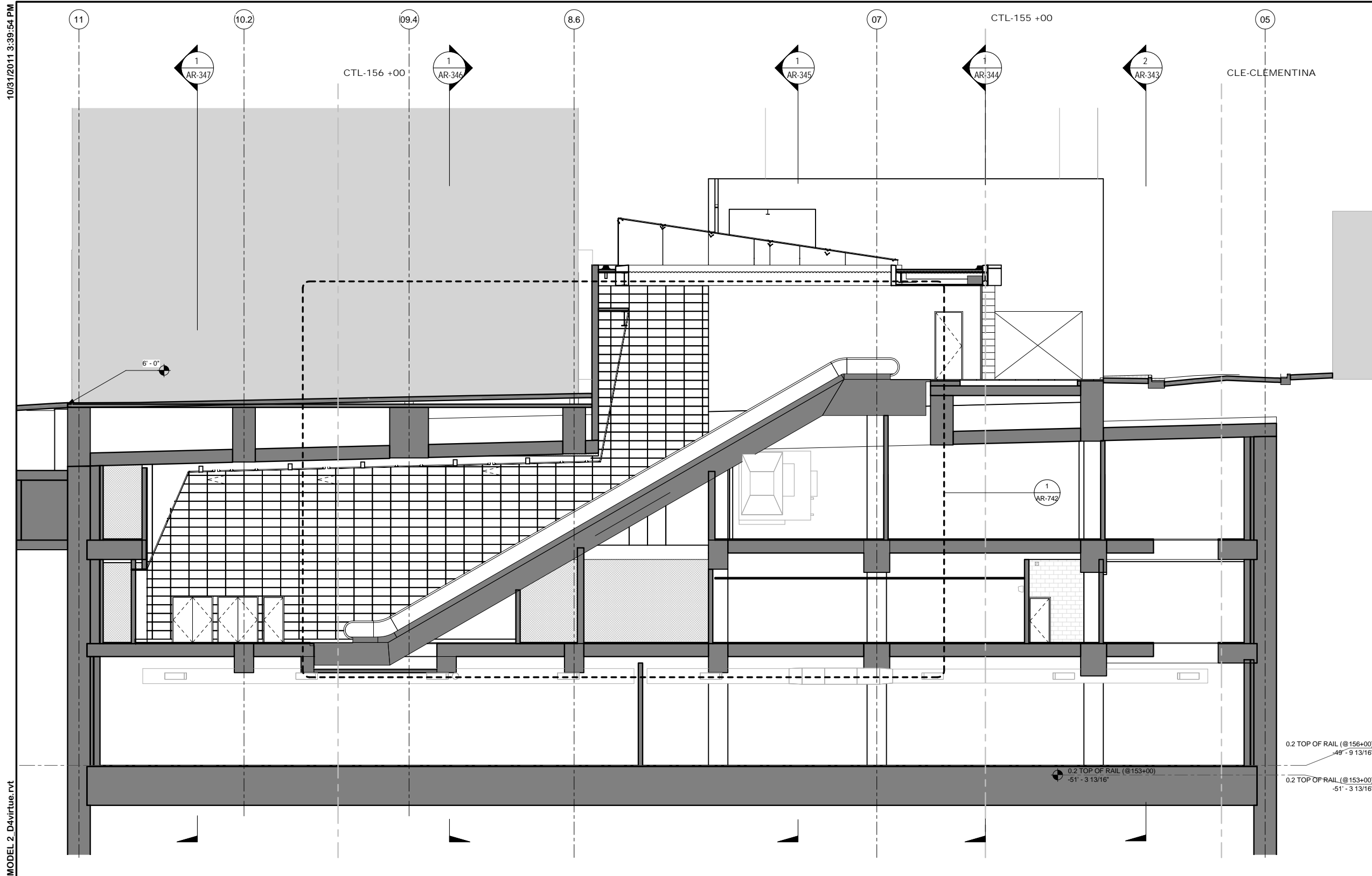
central subway design group
 Michael Willis Architects

DESIGNED Designer
DRAWN Author
CHECKED Checker
REVIEWED
RECOMMENDED
APPROVED
DATE 03/21/11

CITY AND COUNTY OF SAN FRANCISCO
 MUNICIPAL TRANSPORTATION AGENCY
 APPROVED
 EXECUTIVE DIRECTOR/CEO

THIRD STREET LIGHT RAIL PROGRAM
 PHASE 2 - CENTRAL SUBWAY
 MOSCONE STATION
 ARCHITECTURAL
 FINISH PLAN - LVL 3.0 MEZZANINE - SECTOR 3

CONTRACT NO. 1255	REVISION 0A
SFMTA CONTROL NO.	
DRAWING NO. AR-243	
SHEET NO.	



GENERAL NOTES

SHEET NOTES

1 SECTION NS - BAY F - SECTOR 3 - ESCALATOR #4
 AR-328 1/8" = 1'-0"



DRAWING IN PROGRESS/SUBJECT TO CHANGE

DATE	DESCRIPTION	REV. NO.	BY	CHECKED	APPROVED
10/31/2011	90% INTERDISCIPLINARY REVIEW SET	0A			
04/22/2011	PROGRESS PRINT				
12/07/2010	65% DESIGN SUBMITTAL	0A			

Michael Willis Architects

DESIGNED Designer
DRAWN Author
CHECKED Checker
REVIEWED
RECOMMENDED
APPROVED
DATE 02/23/11

CITY AND COUNTY OF SAN FRANCISCO
 MUNICIPAL TRANSPORTATION AGENCY

APPROVED

EXECUTIVE DIRECTOR/CEO

THIRD STREET LIGHT RAIL PROGRAM
 PHASE 2 - CENTRAL SUBWAY
 MOSCONE STATION

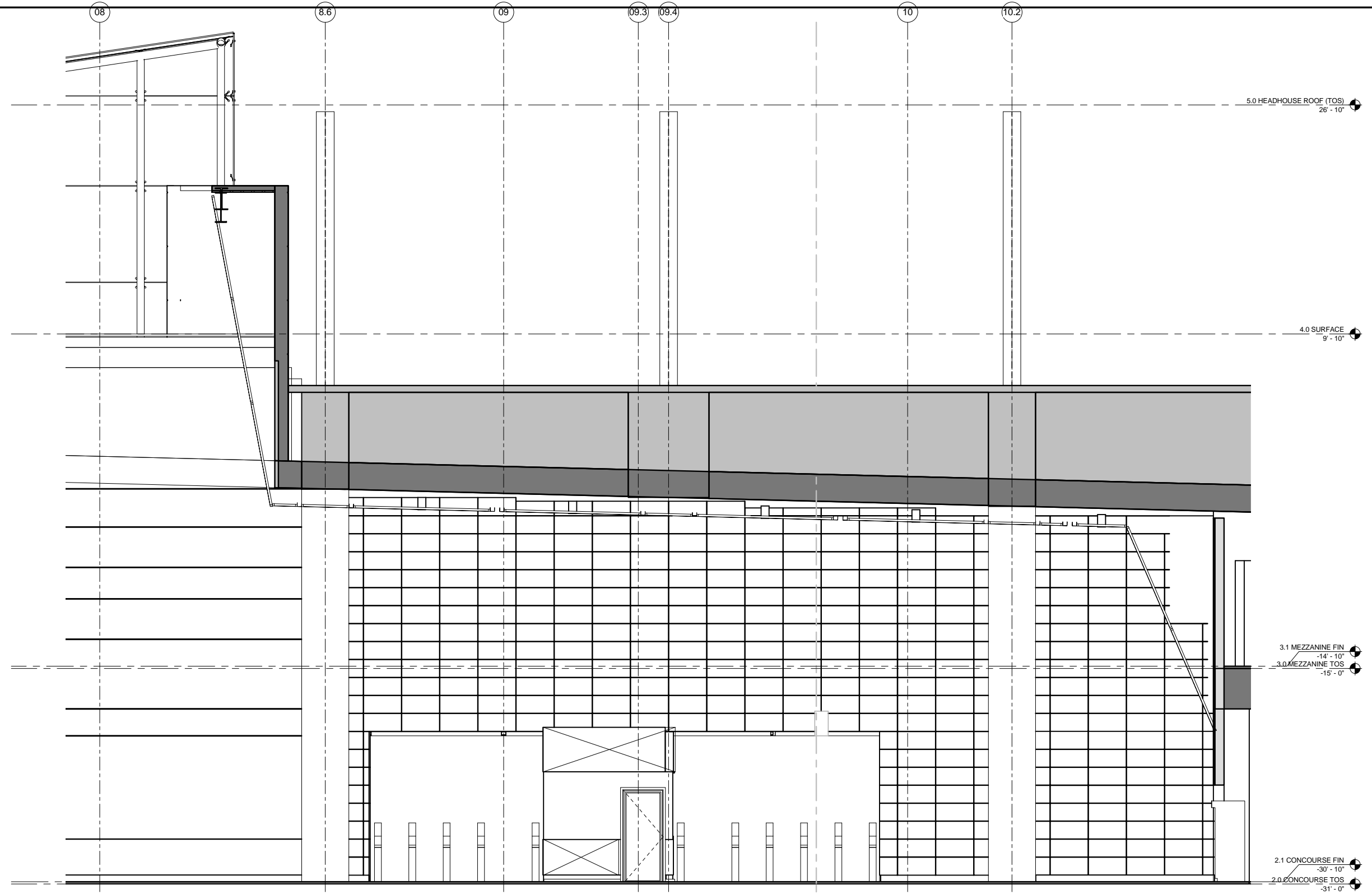
ARCHITECTURAL
 SECTIONS NS - BAY F - SURFACE ESCALATORS -
 SECTOR 3

CONTRACT NO. 1255
SFMTA CONTROL NO. -----
DRAWING NO. AR-328
SHEET NO.
REVISION 0A

10/31/2011 3:39:54 PM
 C:\Users\ID4virtue\Documents\10544 MOS AR MODEL 2_D4virtue.rvt

10/31/2011 3:41:25 PM

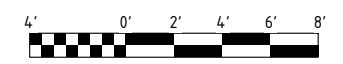
C:\Users\ID4virtue\Documents\1544_MOS_AR_MODEL_2_D4virtue.rvt



GENERAL NOTES

SHEET NOTES

1 TICKETING HALL - EAST 1
AR-552 1/4" = 1'-0"



DRAWING IN PROGRESS/SUBJECT TO CHANGE

DATE	DESCRIPTION	REV. NO.	BY	CHECKED	APPROVED
10/31/2011	90% INTERDISCIPLINARY REVIEW SET	0A			
04/22/2011	PROGRESS PRINT				
12/07/2010	65% DESIGN SUBMITTAL	0A			

Michael Willis Architects

DESIGNED: Designer
 DRAWN: Author
 CHECKED: Checker
 REVIEWED: RECOMMENDED
 APPROVED: APPROVED
 DATE: 04/15/11

CITY AND COUNTY OF SAN FRANCISCO
 MUNICIPAL TRANSPORTATION AGENCY

APPROVED
 EXECUTIVE DIRECTOR/CEO

THIRD STREET LIGHT RAIL PROGRAM
 PHASE 2 - CENTRAL SUBWAY
 MOSCONE STATION

ARCHITECTURAL
 INTERIOR ELEVATIONS - LVL 2.0 - TICKETING
 HALL

CONTRACT NO.	1255
SFMTA CONTROL NO.	-----
DRAWING NO.	AR-552
SHEET NO.	0A
REVISION	0A