

Public Art Proposal for the San Francisco Airport,
Terminal 2, Boarding Area E
September 19th, 2012

merge_____conceptual design

2417 20th street
santa monica, ca 90405
t/f (310) 581 5343
mergeconceptualdesign.com



GOALS

Location - Waiting area at the end of Terminal 2 serves three gates.



- Atmospheric piece that adds **ambience, glow, vibrancy** and **interest**
- Light installation that works **during the day and at night**, and has a significant **sculptural** presence
- Address the **large scale** of the space, and works with materials and a spatial arrangement that give the piece a **light, cloud-like** appearance

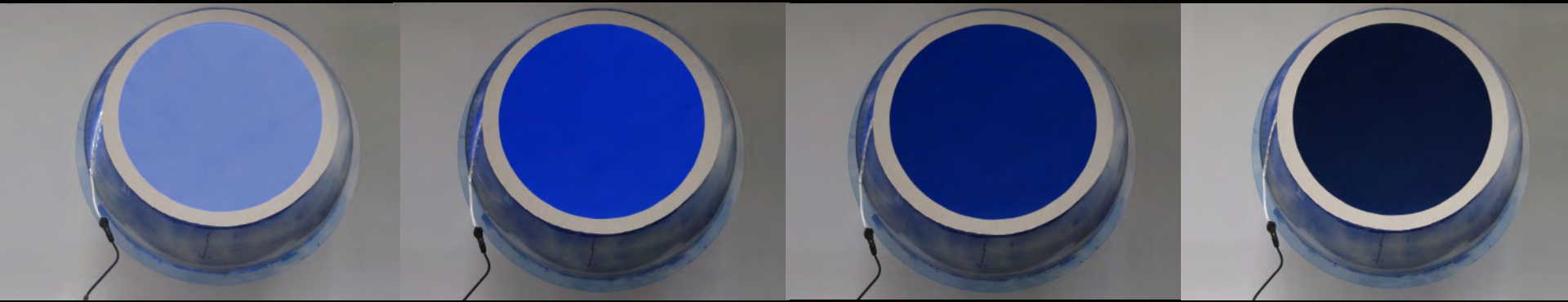
INSTALLATION



- **26 mirror-polished** stainless steel **spheres**, dia. 5', 3'-3", and 2'
- **Hollow, cut open** at various angles, **diffused light** inside
- **Suspended** from the ceiling, loosely arranged in a field that **floats above central seating area**

SPACE

*Aviation has helped humans push the limits that space, time and gravity impose on us.
Space is full of holes, where space, time and gravity are distorted beyond our comprehension.*



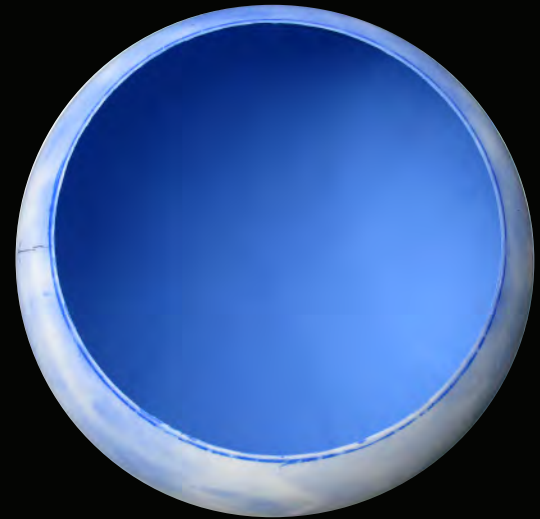
Spheres explore the human perception of space

EXTERIOR

- mirrored spheres use reflections to **camouflage** themselves in their surrounding. They become holes in space.

INTERIOR

- hollow cavity, perfectly even expanses of **matte** color in which one loses sense of the spheres' proportions as objects; **dimensionless space**
- Subtle **shifts** in color and **light** intensity make the space unreadable - both **expanding and flattening** at the same time.
- Color spectrum derived from colors that occur in the **sky**



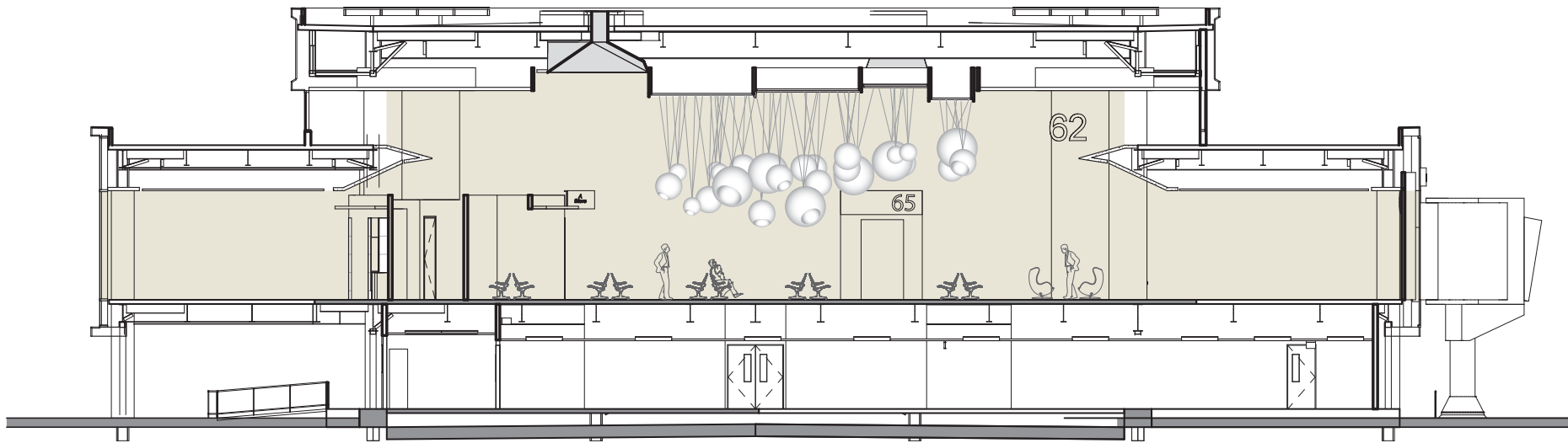
MATERIALITY



Polished stainless steel spheres “dematerialize”:

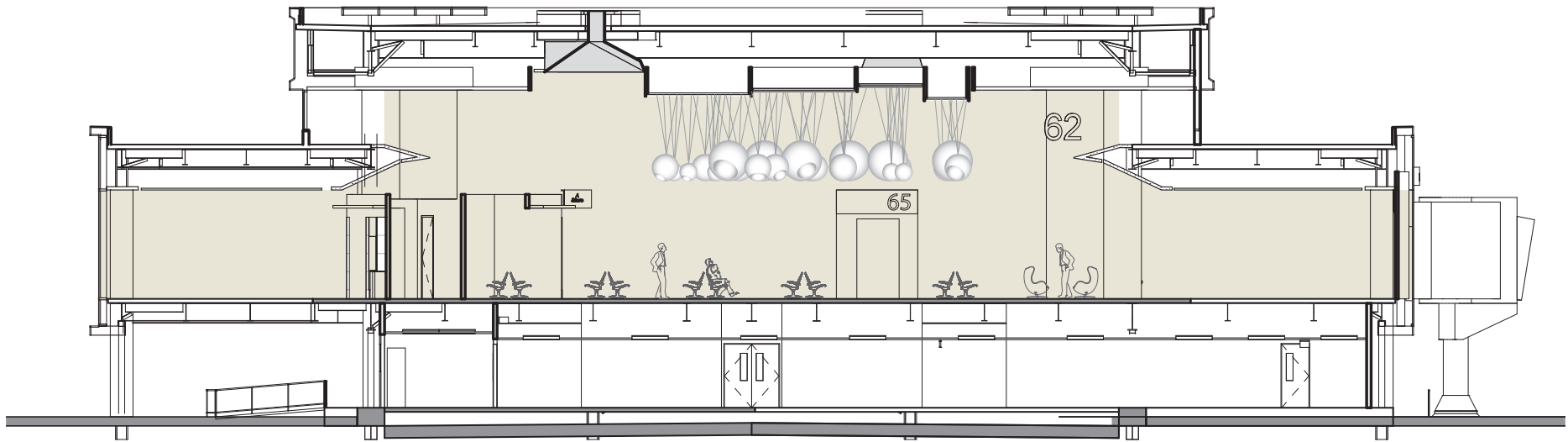
- Reflection of ambient and sun light
- Light and shadow patterns
- Space itself mirrored in the spheres

SECTION VERSION 1



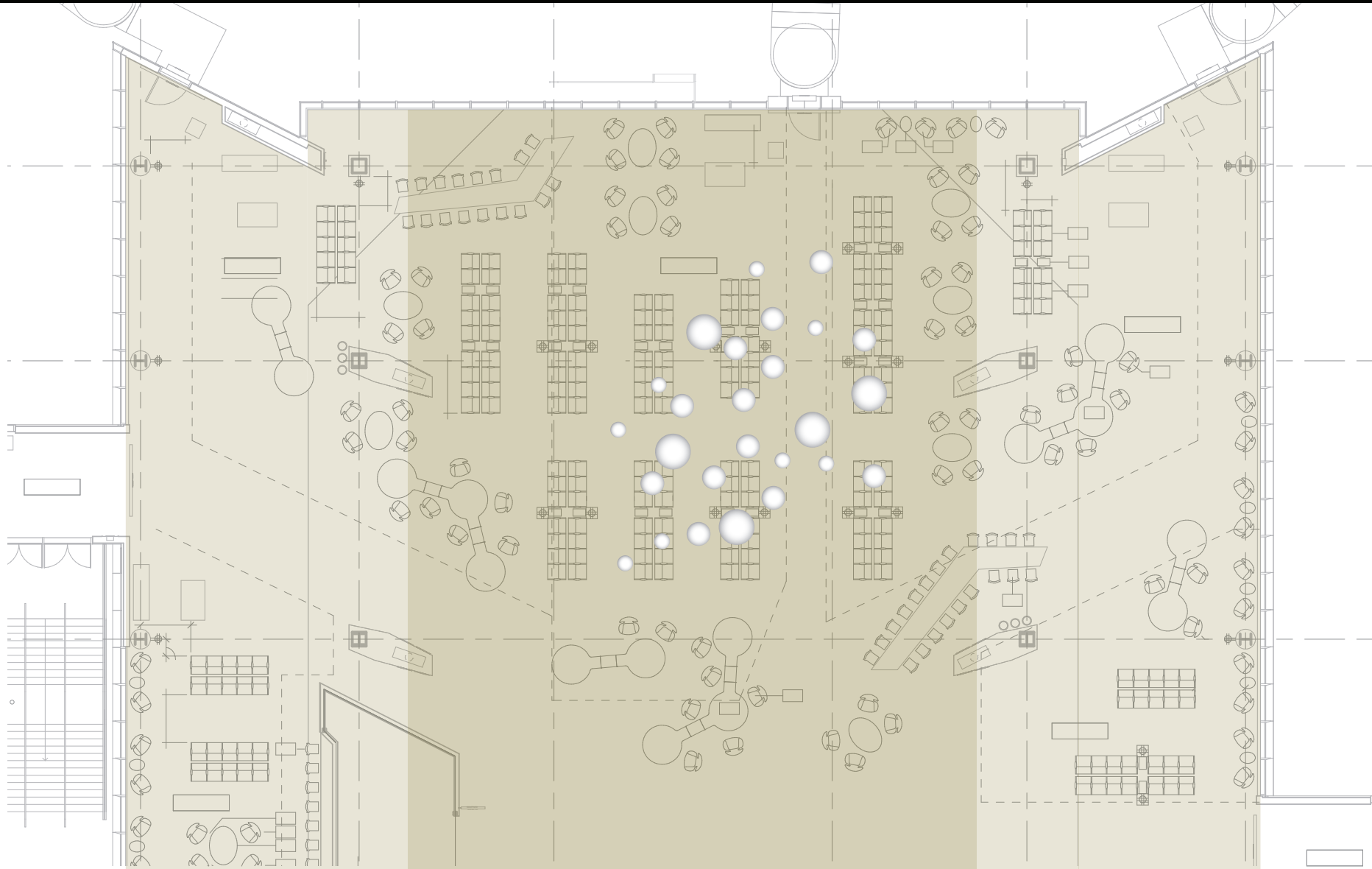
- Majority of spheres stay above 12'-0" AFF, field varies between 8'-0" & 14'-6" AFF
- 3 suspension cables per sphere to prohibit swinging
- Support structure in ceiling to provide hanging points and load distribution

SECTION VERSION 2



- Base of suspended field of spheres aligns at 13'-0" AFF

PLAN

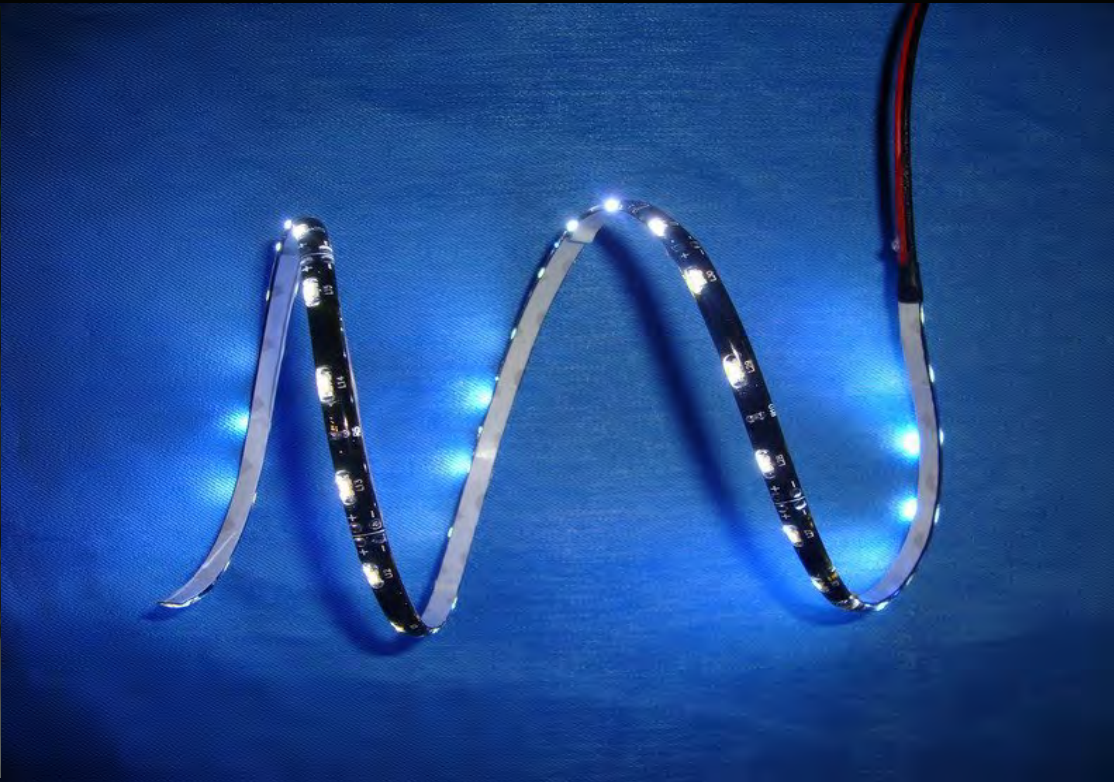


Field of spheres covers area of approx. 35'x40'

MODEL

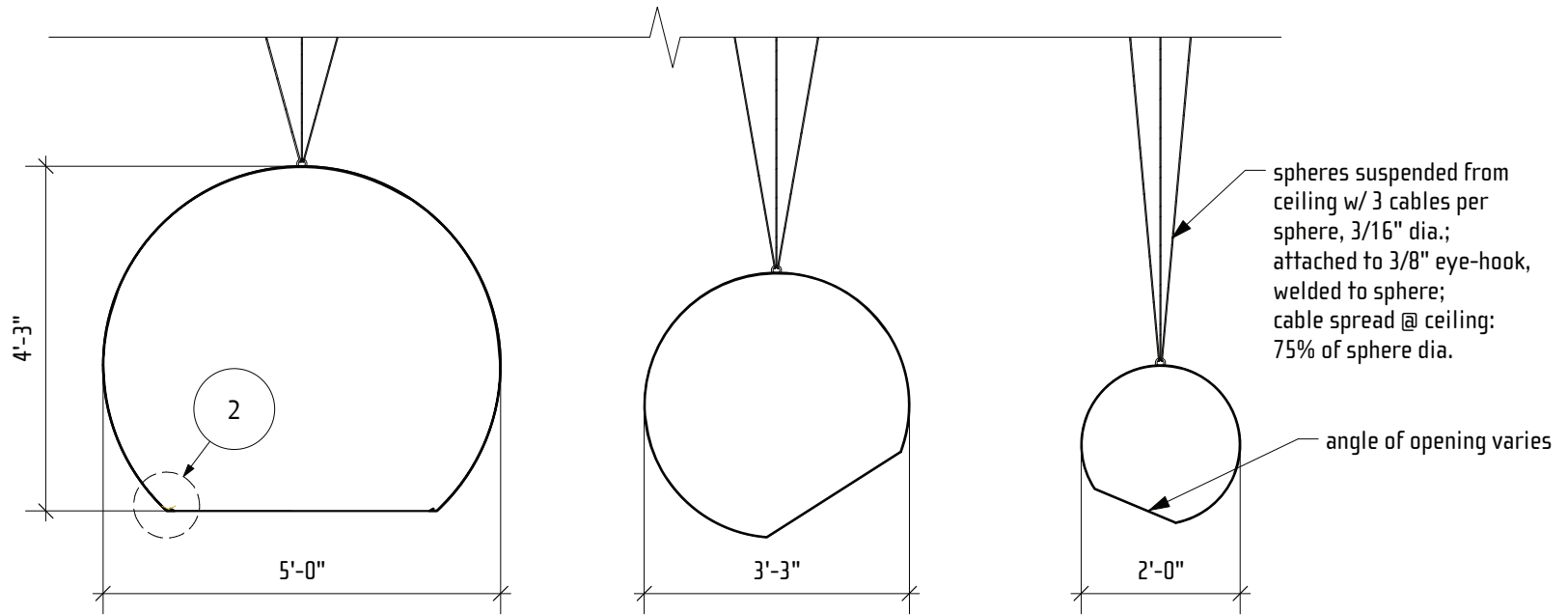


LIGHT

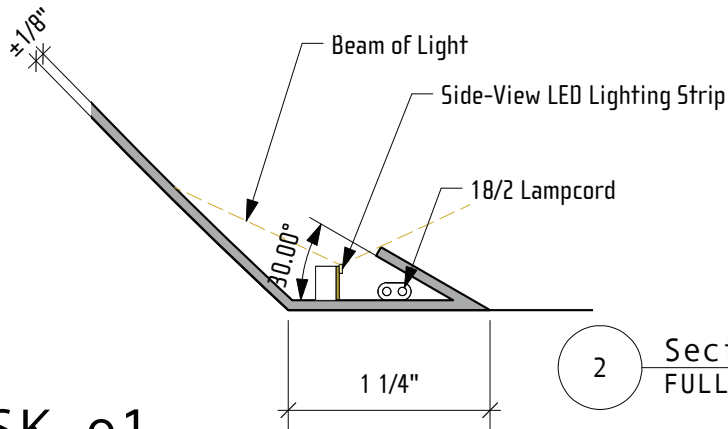


Side-view LED strip hidden within the rim of the opening:

- Ability to change intensity and color hue
- Small computer chip (Arduino) can generate a lighting pattern
- Can react to real-time event, i.e. motion under the sphere
- Long life, low-maintenance components



1 Section - 3 Sphere Sizes
1/2" = 1' - 0"



2 Section @ Bottom
FULL SCALE

SK o1

merge

conceptual design

2417 20th street
santa monica, ca 90405
p/f 310 581 5343

Public Art Piece for
Departure Area E

San Francisco Internat. Airport

Light Spheres

Date: Sep 11, 2012

Scale: as noted

Page: 1 of 1