

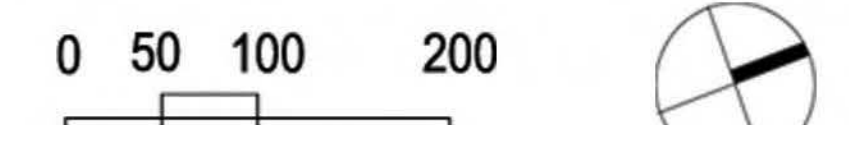
ALAMEDA CREEK WATERSHED CENTER

SFAC PRESENTATION . FEBRUARY 2016

CITY & COUNTY OF SAN FRANCISCO
PUBLIC UTILITIES COMMISSION



The Watershed Center is deeply rooted in its site, with the building and landscape developing as parallel journeys through the transect of the Watershed. Circulation and movement through the building is analogous to the flow of the creek through the landscape, cutting through bedrock canyons, creating inhabited spaces in undercuts, riffles, and pools. The informal botanical garden is a representation of the Alameda Creek Watershed's botanical diversity, and offers a parallel journey organized along the transect of the watershed and its plant communities. The garden features axial paths relating to the classical geometry of the Water Temple combined with a meandering stream linking the natural and man-made histories of the Alameda Creek Watershed.



SITE PLAN

Response to October Comments



SITE PLAN





Public Art
Mark Brest van Kempen



PLANTING PLAN

PLANTING PALETTE

Trees

AC	Aesculus californica
AM	Acer macrophyllum
CO	Cercis occidentalis
CSS	Cornus sessilis var. sessilis
HA	Heteromeles arbutifolia
PR	Platanus racemosa
PS	Pinus sabiniana
PVD	Prunus virginiana demissa
QA	Quercus agrifolia
QB	Quercus berberidifolia
QD	Quercus douglasii
QL	Quercus lobata
QW	Quercus wizlenzii
SLA	Salix lasiolepis
SNC	Sambucus nigra ssp. caerulea

Entry Road Groundcovers

E1	Arctostaphylos cruzensis
E2	Arctostaphylos 'John Dourley'
E3	Arctostaphylos Hookeri Franciscana
E4	Arctostaphylos 'Pacific Mist'
E5	Baccharis pilularis 'Pigeon Point'
E6	Ceanothus thyrsiflorus griseus 'Yankee Point'
E7	Agrostis pallens/ Carex praeagrailis/ Bouteloua gracilis

Native Meadow

M1	Achillea millefolium
M2	Sisyrinchium bellum
M3	Argrostris pallens
M4	Artemisia douglasiana
M5	Epilobium canum subsp. Canum
M6	Solidago elongata
M7	Ranunculus californicus var. californicus
M8	Leymus triticoides
M9	Koeleria macrantha
R3	Rhamnus californica
R9	Juncus effusus subsp. pacificus

Valley Needlegrass

G1	Nassella pulchra
G2	Lupinus formosus var. formosus
G3	Penstemon heterophyllus var. purdyi
G4	Eriogonum fasciculatum polifolium
G5	Sidalcea malviflora subsp. Laciniata
G6	Lupinus albifrons
G7	Eriophyllum confertiflorum var. confertiflorum
G8	Chlorogalum pomeridianum var. divaricatum

Riparian

R1	Carex nudata
R2	Rosa californica
R3	Rhamnus californica
R4	Stachys rigida var. quercetorum
R5	Mimulus cardinalis
R6	Mimulus guttatus
R7	Lonicera hispidula
R8	Symphoricarpos albus var. laevigatus
R9	Juncus effusus subsp. pacificus
CCS	Cornus sericea subsp. sericea

Diablan Sage Scrub

SS1	Artemisia californica
SS2	Salvia mellifera
SS3	Eriodictyon californicum
SS4	Mimulus aurantiacus
SS5	Eriogonum fasciculatum var. polifolium
SS6	Salvia apiana
G3	Penstemon heterophyllum var. purdyi
G6	Lupinus albifrons var. albifrons
G7	Eriophyllum confertiflorum var. confertiflorum

Chaparral

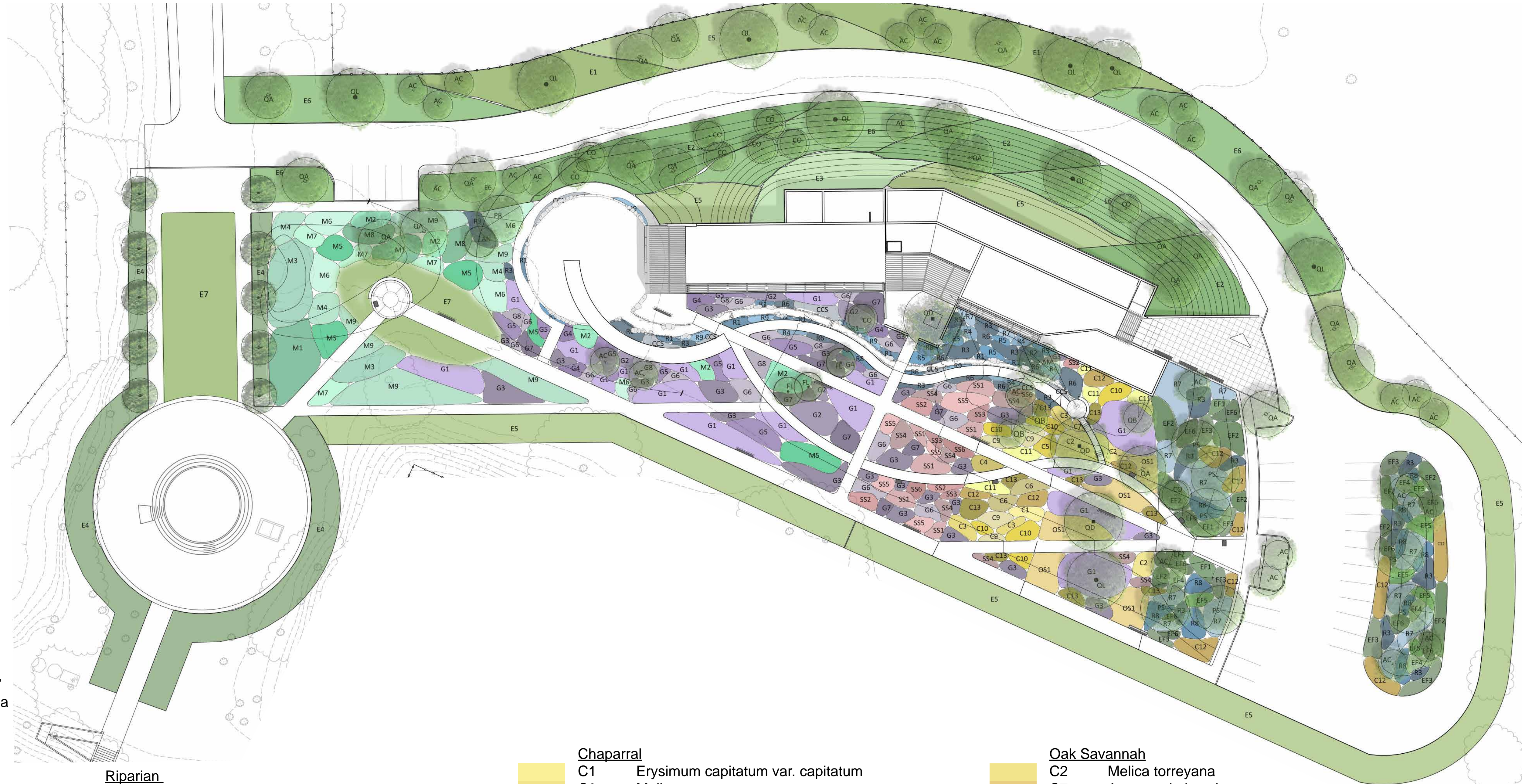
C1	Erysimum capitatum var. capitatum
C2	Melica torreyana
C3	Monardella villosa ssp. villosa
C4	Penstemon centranthifolius
C5	Silene laciniata subsp. Californica
C6	Adenostoma fasciculatum var. fasciculatum
C7	Arctostaphylos glauca
C8	Cercocarpus betuloides var. betuloides
C9	Rhamnus californica ssp. tomentella
C10	Lonicera subspicata
C11	Prunus illicifolia
C12	Rhamnus illicifolia
C13	Solanum umbelliferum
G3	Penstemon heterophyllum var. purdyi
G7	Eriophyllum confertiflorum var. confertiflorum
SS4	Mimulus aurantiacus

Oak Savannah

C2	Melica torreyana
C7	Arctostaphylos glauca
C10	Lonicera subspicata
C11	Prunus illicifolia
C12	Rhamnus illicifolia
C13	Solanum umbelliferum
G1	Nassella pulchra
G3	Penstemon heterophyllum var. purdyi
OS1	Bromus carinatus var. carinatus
SS4	Mimulus aurantiacus

Mixed Evergreen Forest

EF1	Aquilegia formosa
EF2	Satureja douglasii
EF3	Stachys rigida var. quercetorum
EF4	Thalictrum fendleri var. polycarpum
EF5	Physocarpus capitatus
EF6	Ribes sanguineum var. glutinosum
C12	Rhamnus illicifolia
R3	Rhamnus californica
R7	Lonicera hispidula
R8	Symphoricarpos albus var. laevigatus



PLANTING PALETTE

Trees

- AC *Aesculus californica*
- AM *Acer macrophyllum*
- CO *Cercis occidentalis*
- CSS *Cornus sessilis* var. *sessilis*
- HA *Heteromeles arbutifolia*
- PR *Platanus racemosa*
- PS *Pinus sabiniana*
- PVD *Prunus virginiana demissa*
- QA *Quercus agrifolia*
- QB *Quercus berberidifolia*
- QD *Quercus douglasii*
- QL *Quercus lobata*
- QW *Quercus wizlenzii*
- SLA *Salix lasiolepis*
- SNC *Sambucus nigra* ssp. *caerulea*

Entry Road Groundcovers

- E1 *Arctostaphylos cruzensis*
- E2 *Arctostaphylos* 'John Dourley'
- E3 *Arctostaphylos Hookeri* Franciscana
- E4 *Arctostaphylos* 'Pacific Mist'
- E5 *Baccharis pilularis* 'Pigeon Point'
- E6 *Ceanothus thyrisiflorus* griseus 'Yankee Point'
- E7 *Agrostis pallens*/ *Carex praegracilis*/ *Bouteloua gracilis*

Native Meadow

- M1 *Achillea millefolium*
- M2 *Sisyrinchium bellum*
- M3 *Argrostris pallens*
- M4 *Artemisia douglasiana*
- M5 *Epilobium canum* subsp. *Canum*
- M6 *Solidago elongata*
- M7 *Ranunculus californicus* var. *californicus*
- M8 *Leymus triticoides*
- M9 *Koeleria macrantha*
- R3 *Rhamnus californica*
- R9 *Juncus effusus* subsp. *pacificus*

Valley Needlegrass

- G1 *Nassella pulchra*
- G2 *Lupinus formosus* var. *formosus*
- G3 *Penstemon heterophyllus* var. *purdyi*
- G4 *Eriogonum fasciculatum* polifolium
- G5 *Sidalcea malviflora* subsp. *Laciniata*
- G6 *Lupinus albifrons*
- G7 *Eriophyllum confertiflorum* var. *confertiflorum*
- G8 *Chlorogalum pomeridianum* var. *divaricatum*

Riparian

- R1 *Carex nudata*
- R2 *Rosa californica*
- R3 *Rhamnus californica*
- R4 *Stachys rigida* var. *quercetorum*
- R5 *Mimulus cardinalis*
- R6 *Mimulus guttatus*
- R7 *Lonicera hispidula*
- R8 *Symphoricarpos albus* var. *laevigatus*
- R9 *Juncus effusus* subsp. *pacificus*
- CCS *Cornus sericea* subsp. *sericea*

Diablan Sage Scrub

- SS1 *Artemisia californica*
- SS2 *Salvia mellifera*
- SS3 *Eriodictyon californicum*
- SS4 *Mimulus aurantiacus*
- SS5 *Eriogonum fasciculatum* var. *polifolium*
- SS6 *Salvia apiana*
- G3 *Penstemon heterophyllum* var. *purdyi*
- G6 *Lupinus albifrons* var. *albifrons*
- G7 *Eriophyllum confertiflorum* var. *confertiflorum*

Chaparral

- C1 *Erysimum capitatum* var. *capitatum*
- C2 *Melica torreyana*
- C3 *Monardella villosa* ssp. *villosa*
- C4 *Penstemon centranthifolius*
- C5 *Silene laciniata* subsp. *Californica*
- C6 *Adenostoma fasciculatum* var. *fasciculatum*
- C7 *Arctostaphylos glauca*
- C8 *Cercocarpus betuloides* var. *betuloides*
- C9 *Rhamnus californica* ssp. *tomentella*
- C10 *Lonicera subspicata*
- C11 *Prunus illicifolia*
- C12 *Rhamnus illicifolia*
- C13 *Solanum umbelliferum*
- G3 *Penstemon heterophyllum* var. *purdyi*
- G7 *Eriophyllum confertiflorum* var. *confertiflorum*
- SS4 *Mimulus aurantiacus*

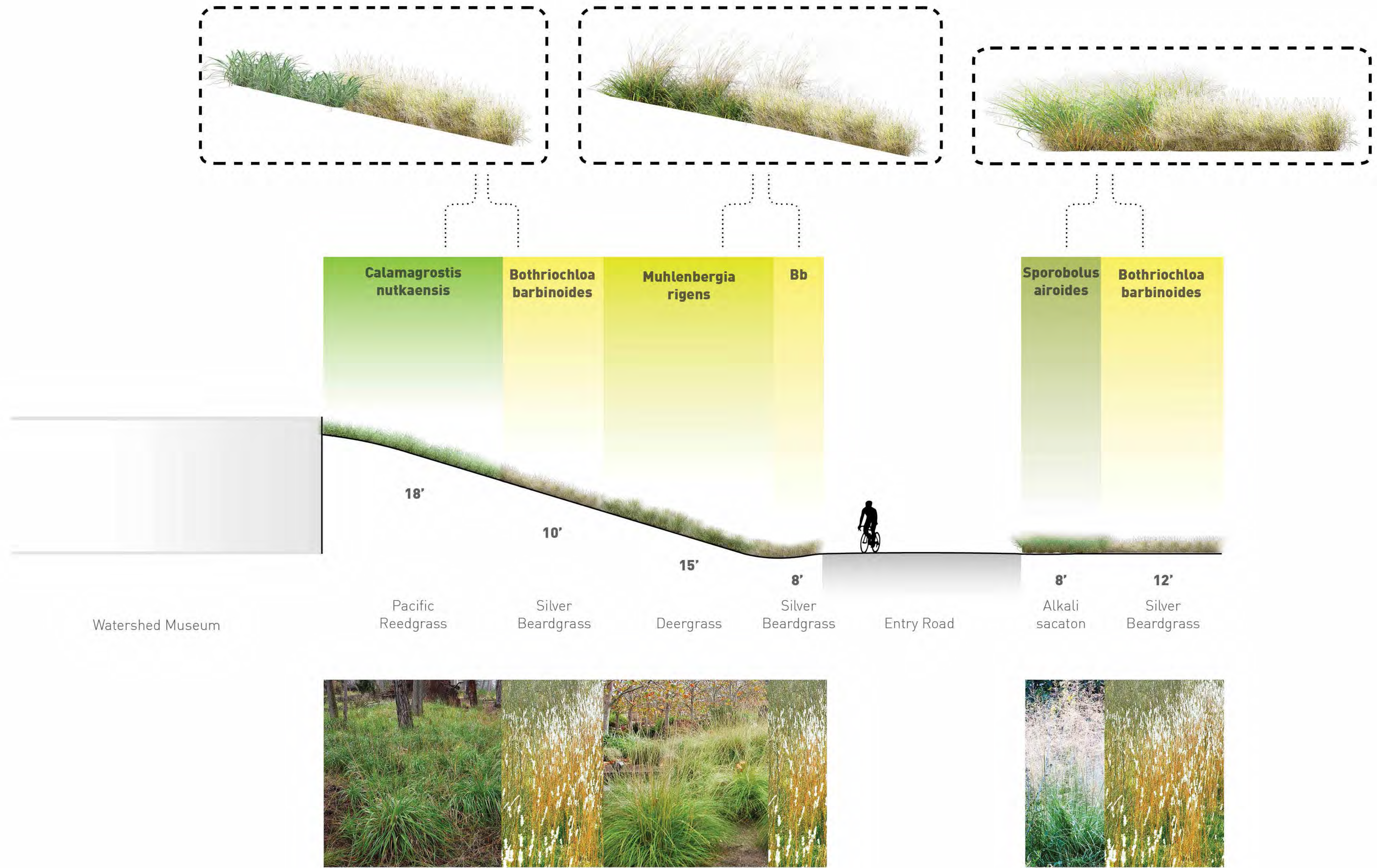
Oak Savannah

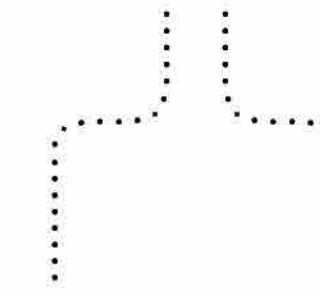
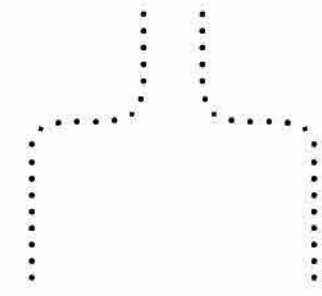
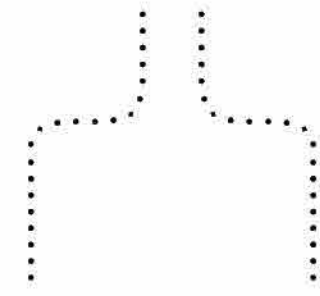
- C2 *Melica torreyana*
- C7 *Arctostaphylos glauca*
- C10 *Lonicera subspicata*
- C11 *Prunus illicifolia*
- C12 *Rhamnus illicifolia*
- C13 *Solanum umbelliferum*
- G1 *Nassella pulchra*
- G3 *Penstemon heterophyllus* var. *purdyi*
- OS1 *Bromus carinatus* var. *carinatus*
- SS4 *Mimulus aurantiacus*

Mixed Evergreen Forest

- EF1 *Aquilegia formosa*
- EF2 *Satureja douglasii*
- EF3 *Stachys rigida* var. *quercetorum*
- EF4 *Thalictrum fendleri* var. *polycarpum*
- EF5 *Physocarpus capitatus*
- EF6 *Ribes sanguineum* var. *glutinosum*
- C12 *Rhamnus illicifolia*
- R3 *Rhamnus californica*
- R7 *Lonicera hispidula*
- R8 *Symphoricarpos albus* var. *laevigatus*



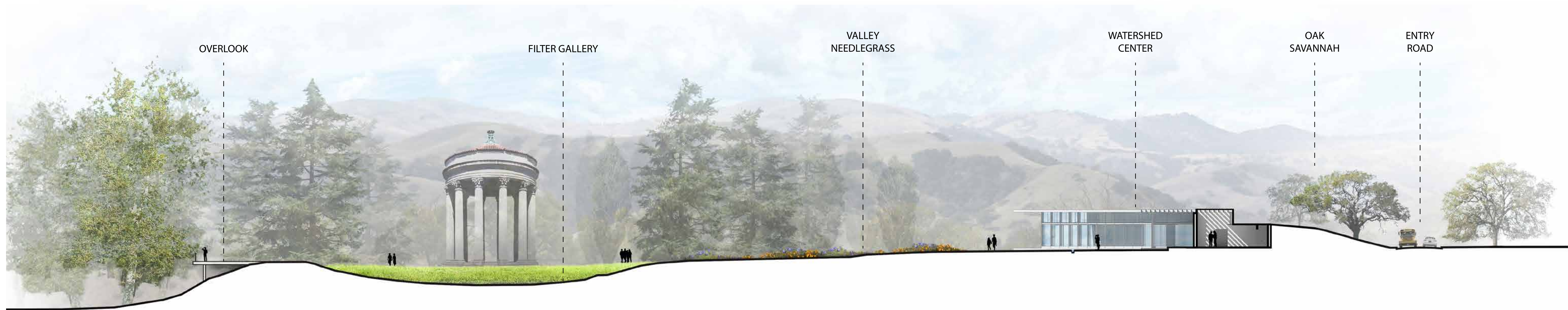
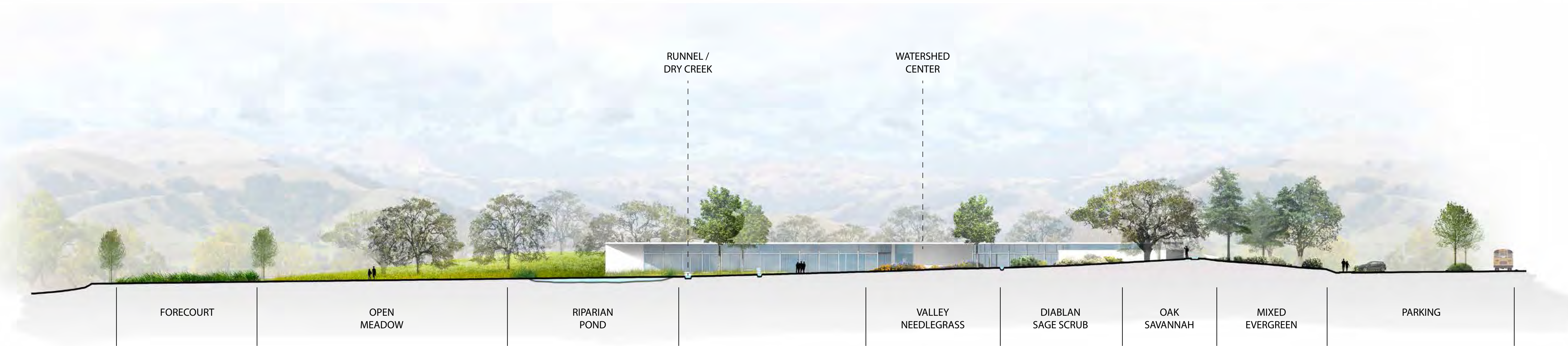
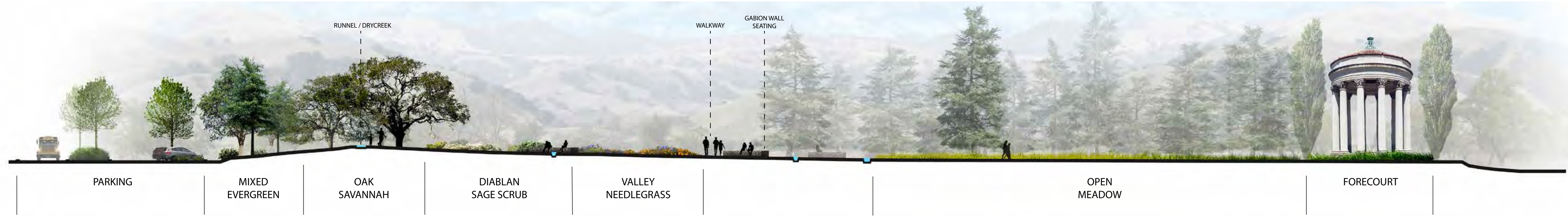




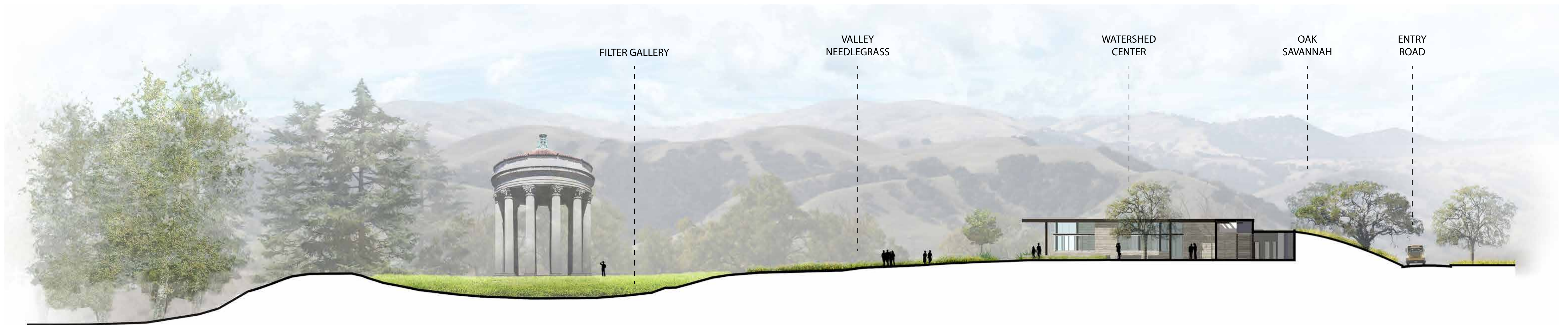
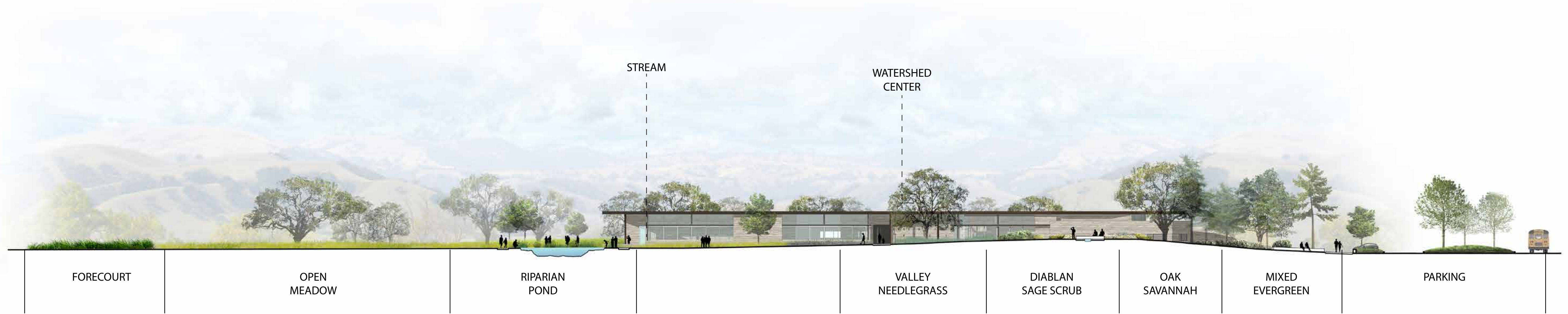
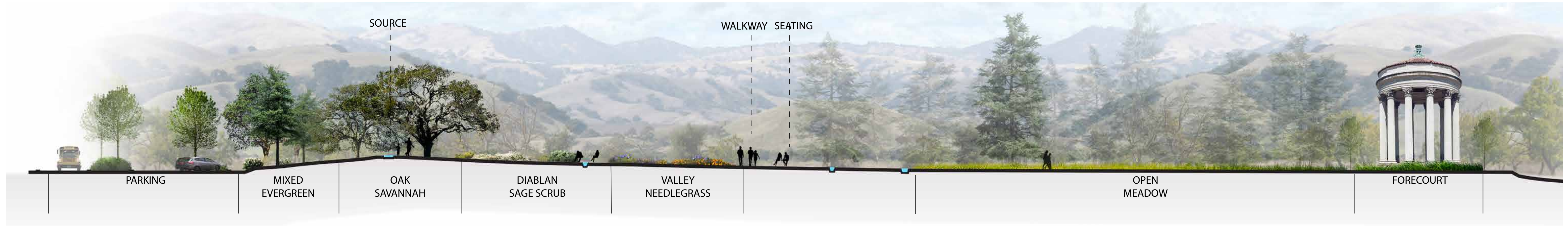
109' Deergrass	91' Giant Wild Rye	47' Deergrass	60' Alkali sacaton	60' Silver Beardgrass	75' Alkali sacaton	80' Deergrass	60' Giant Wild Rye	80' Deergrass
--------------------------	------------------------------	-------------------------	------------------------------	---------------------------------	------------------------------	-------------------------	------------------------------	-------------------------



WATERSHED TRANSECT SECTIONS



WATERSHED TRANSECT SECTIONS

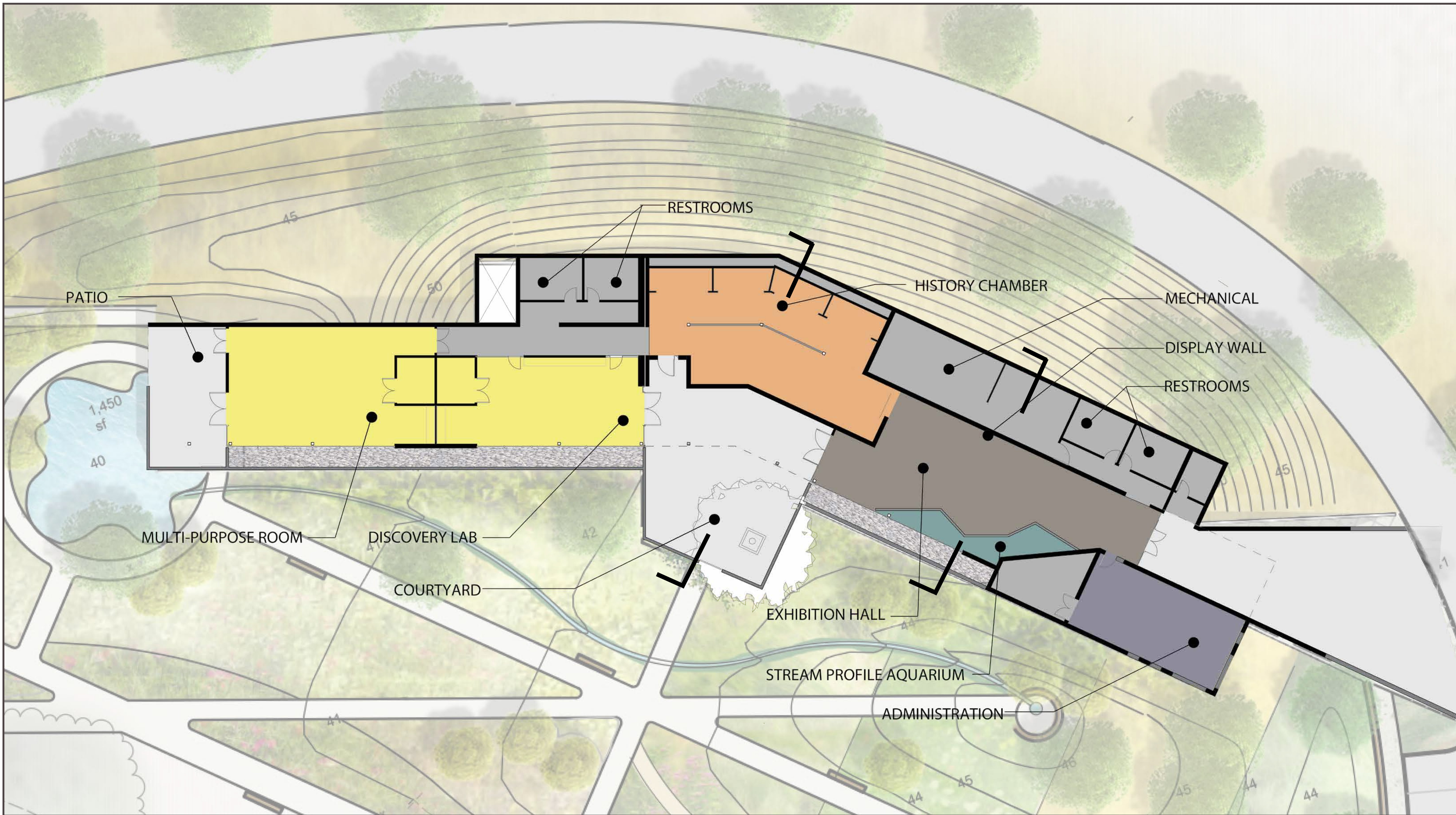


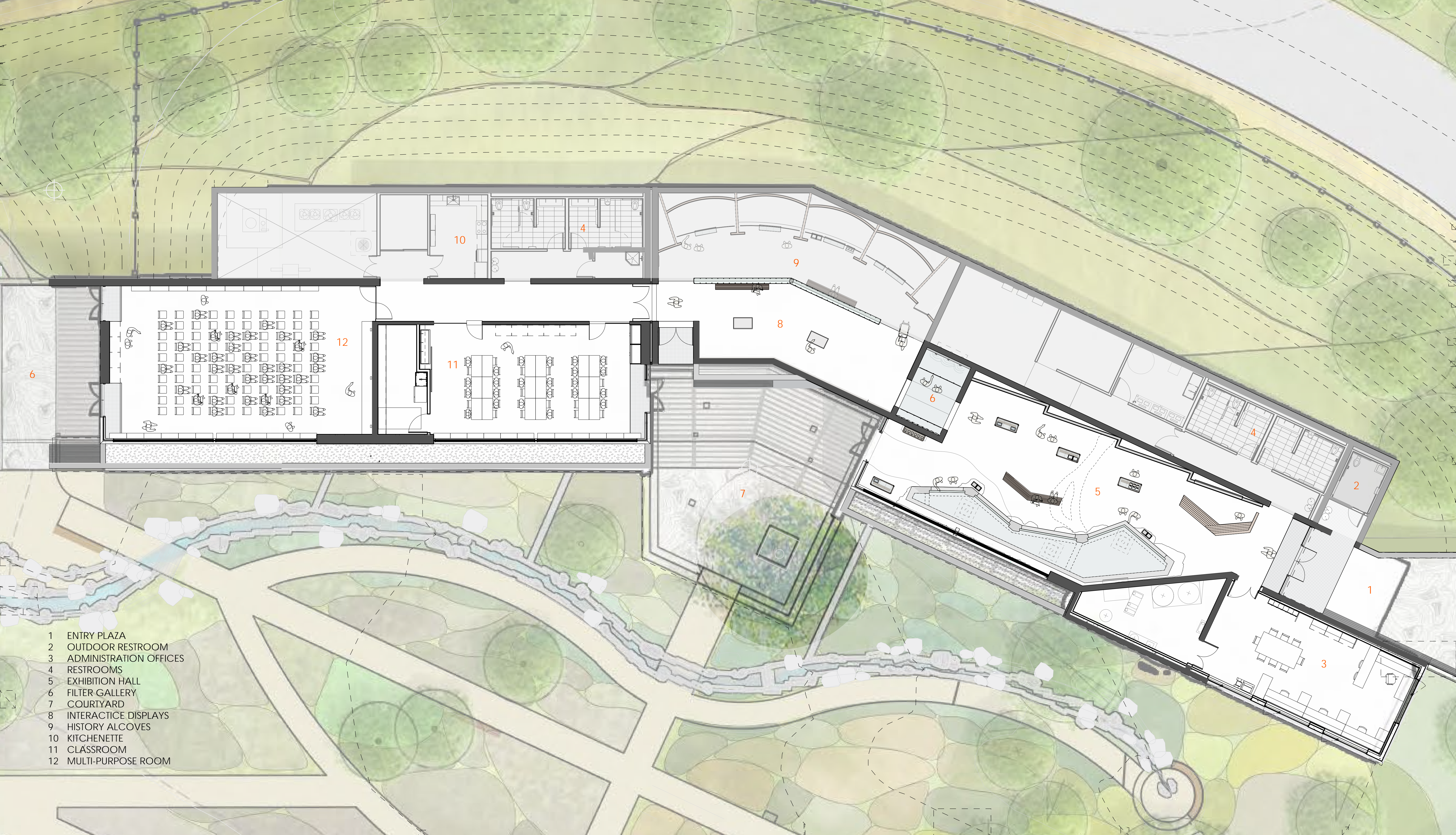








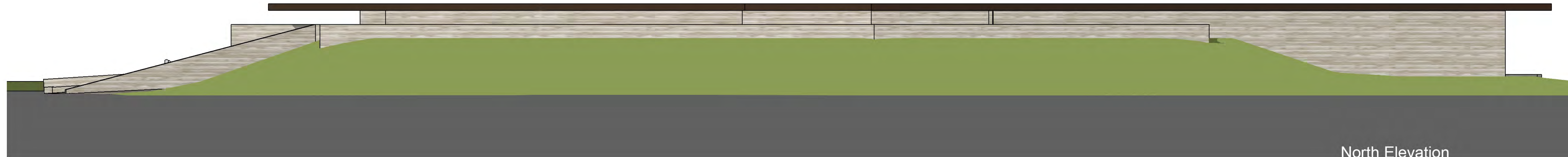




- 1 ENTRY PLAZA
- 2 OUTDOOR RESTROOM
- 3 ADMINISTRATION OFFICES
- 4 RESTROOMS
- 5 EXHIBITION HALL
- 6 FILTER GALLERY
- 7 COURTYARD
- 8 INTERACTIVE DISPLAYS
- 9 HISTORY ALCOVES
- 10 KITCHENETTE
- 11 CLASSROOM
- 12 MULTI-PURPOSE ROOM



South Elevation



North Elevation



South Elevation

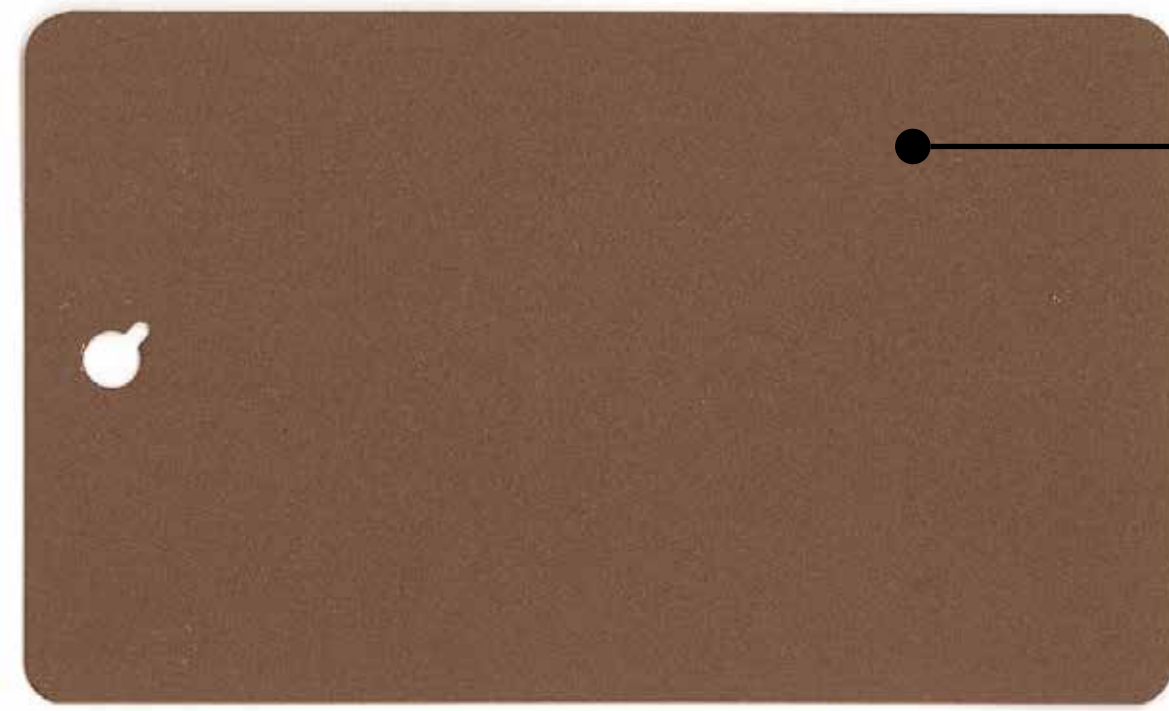


North Elevation

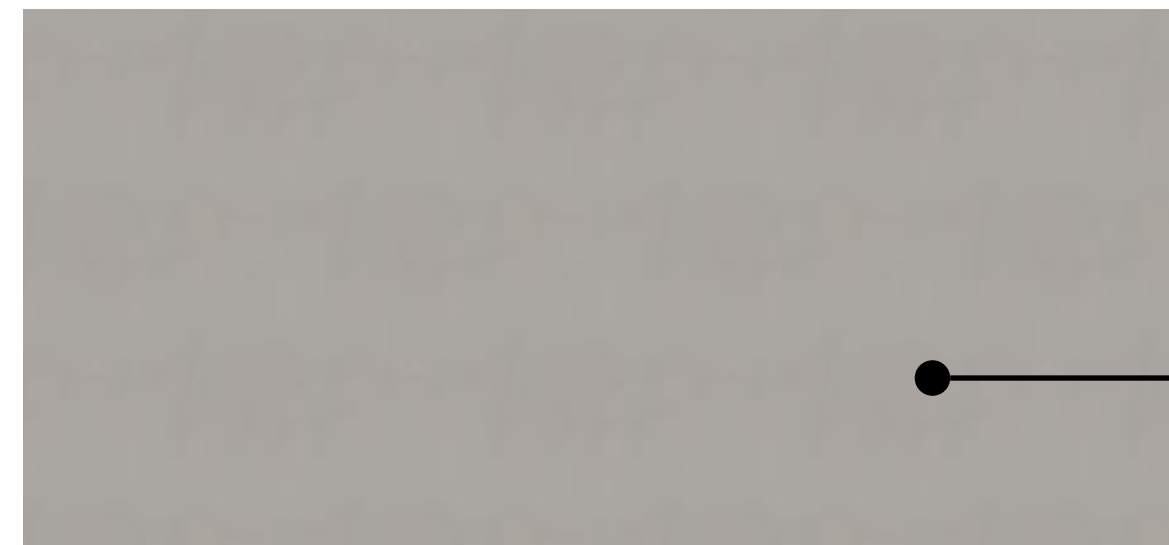


EXTERIOR VIEWS





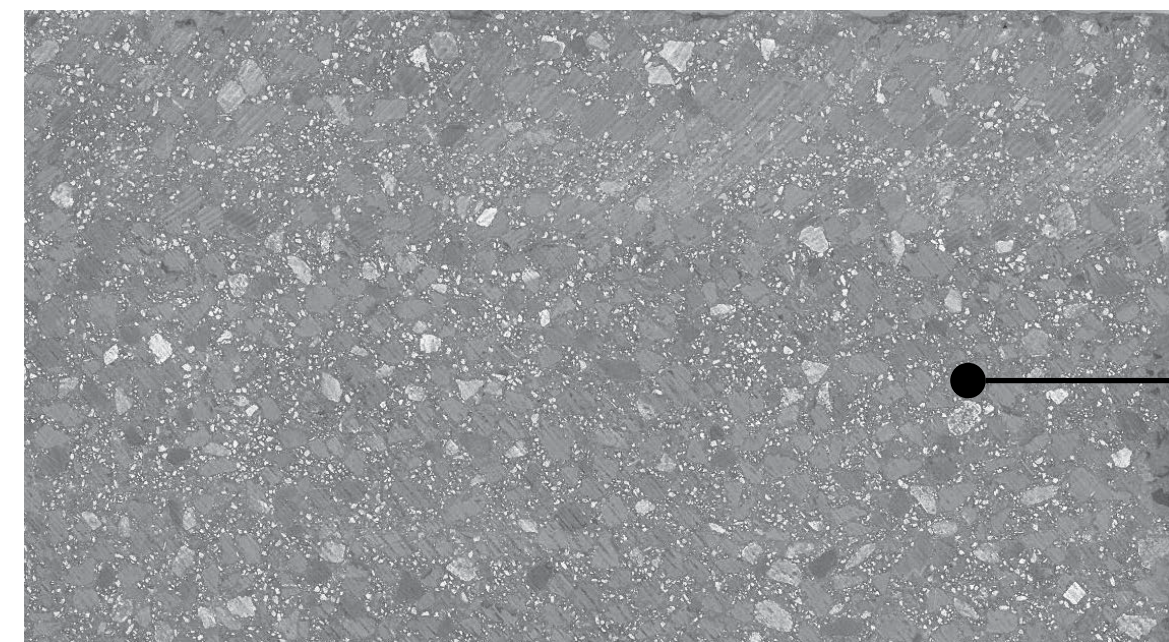
POWDER COAT ALUMINUM FASCIA/BEAM CLADDING
(TEXTURED COR-TEN)



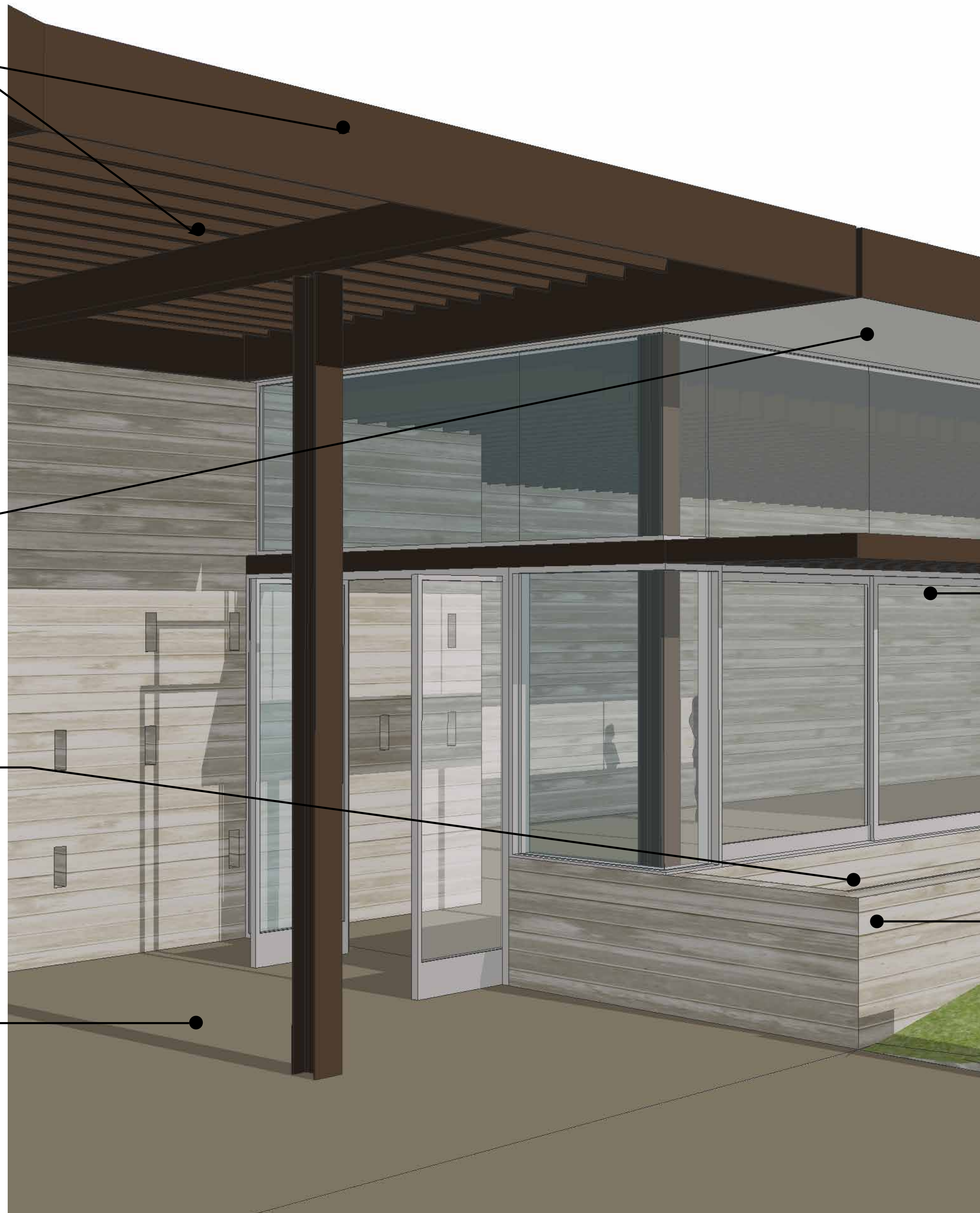
INTEGRAL COLOR CEMENT PLASTER SOFFIT



SITE QUARRIED ROCK & GRAVEL COBBLES



DIAMOND GROUND SEALED EXTERIOR CONCRETE



ANODIZED ALUMINUM MULTI-SLIDE WINDOW SYSTEM



BOARD FORMED CONCRETE W/ SITE QUARRIED AGGREGATE

MATERIALS



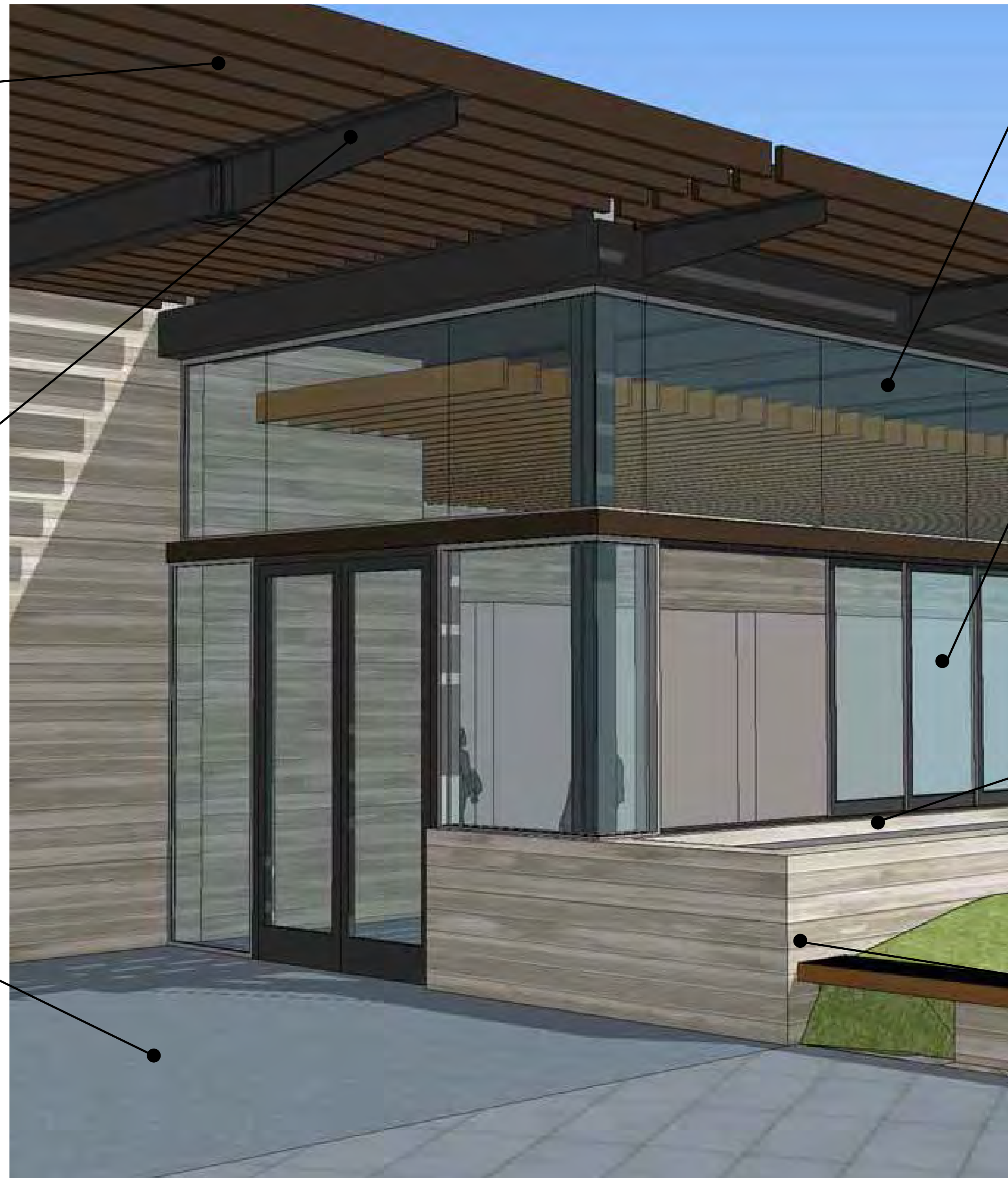
POWDER COATED ALUMINUM TRELLIS /
SPANDREL BEAM CLADDING
INTERPON SABLE TEXTURED COR-TEN



PAINTED STEEL BEAMS
COLOR: TNEMEC "DEEP SPACE 34GR"



18"X36" THERMAL FINISH ETCHED
BLUESTONE PAVERS
(BY LANDSCAPE / EXHIBIT DESIGNER)



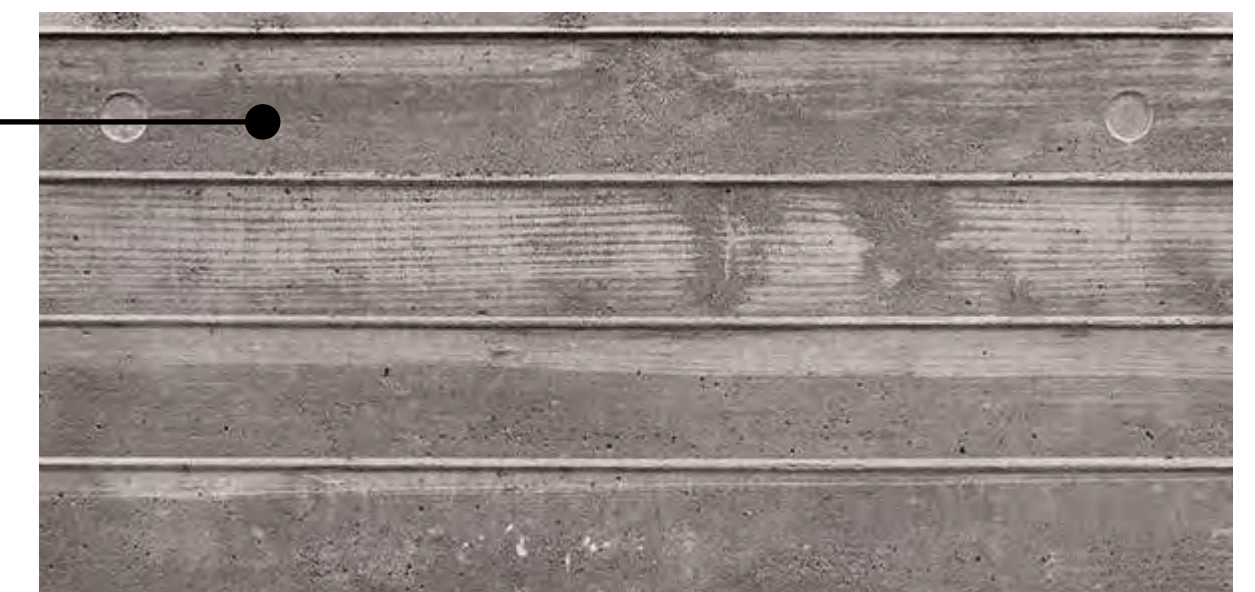
BUTT-GLAZED INSULATED GLASS TRANSOM,
PPG SOLARBAN 70XL GLAZING



ANODIZED ALUMINUM MULTI-SLIDE
WINDOW SYSTEM
WESTERN WINDOW SYSTEMS SERIES 600



SITE QUARRIED RIVER GRAVEL COBBLES



BOARD FORMED INTEGRAL COLOR
CONCRETE CUSTOM COLOR







