



**GOLDEN GATE PARK TENNIS CENTER ARTIST SELECTION PANEL  
MEETING 2 SUMMARY**

**MEETING DATE**

March 26, 2018

**VOTING SELECTION PANELISTS**

Emily Bello, Designer, EHDD Architecture

Michele Carlson, Executive Director, Daily Serving and Art Practical

Julie Exley, Community Representative

Maria Jenson, Executive Director, SOMArts

Mary Jung, Arts Commissioner

\*Jennifer Lovvorn, Senior Program Manager, San Francisco Arts Commission

Daliah Khoury, Administrative Analyst, San Francisco Recreation and Park Department

\*Non-voting panelist

**PROCESS**

The following artists presented an overview of their practice and proposals for the Golden Gate Park Artist Selection Panel:

Susan Logoreci

Sanaz Mazinani

Muzae Sesay

The panelists were asked to discuss and evaluate each of the proposals on the following criteria:

- Aesthetic quality
- Appropriateness of the proposed artwork for the site and project goals
- Demonstrated feasibility of the preliminary proposal and the proposal budget
- Demonstrated maintainability and durability of the artwork's design, materials, fabrication and installation methods

The panelist then ranked the artists 1, 2, or 3 (1 = highest rank) accordingly.

**RESULTS**

Sanaz Mazinani	6
Susan Logoreci	14
Muzae Sesay	16

**ARTS COMMISSION APPROVAL**

**Motion:** Motion to approve selected artist Sanaz Mazinani and proposal for the Golden Gate Tennis Center Public Art Project as recommended by the artist selection panel.

**Motion:** Motion to authorize the Director of Cultural Affairs to enter into contract with artist Sanaz Mazinani for an amount not to exceed \$57,325.00 for design, fabrication, transportation and installation consultation of an artwork for the Golden Gate Tennis Center Public Art Project.



# SPIN

## Art Proposal for the Golden Gate Park Tennis Center Public Art Project

Sanaz Mazinani

SPIN is an artwork inspired by the movement and flow in tennis. The mural is composed of imagery exhibiting athleticism juxtaposed, overlapped, and repeated to create a multi-layered visual tapestry.

Viewed from afar, an abstract symmetrical pattern of curving and weaving lines can be seen. From up close, the patterned surface reveals action shots in kaleidoscopic formations of some of the most exceptional and boundary-redefining players in the history of tennis. Each figure was chosen for their great abilities in the sport but also for their commitment to bettering the world around them.

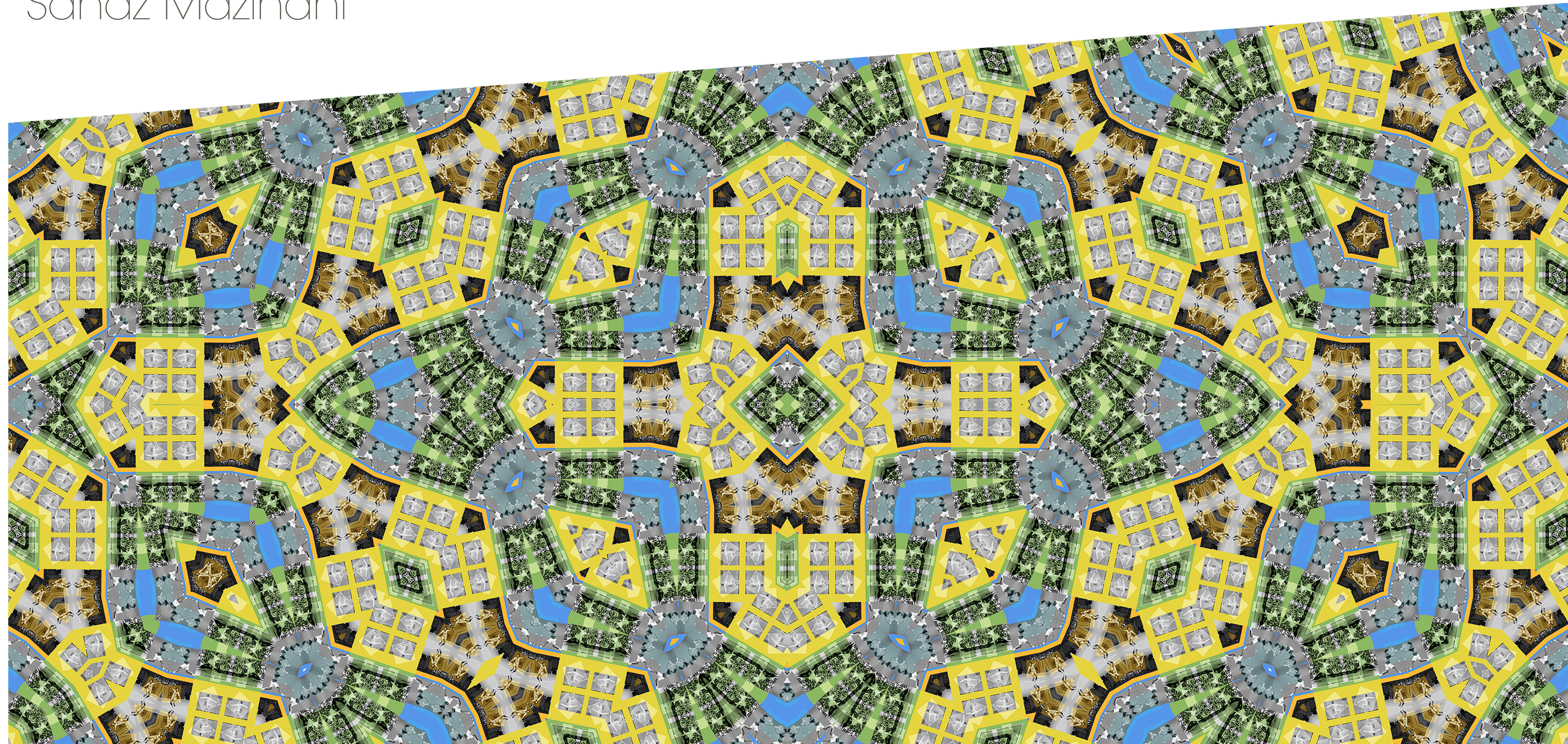
Included is Alice Marble who trained as a teenager in San Francisco and ranked No. 1 in 1939. After she retired from pro tennis, Marble worked on the advisory board of DC Comics where she was an editor on *Wonder Woman*.

Arthur Ashe was an American tennis player who won three Grand Slam titles, and also the only black man ever to win the singles title at Wimbledon. Ashe was also an active civil rights supporter, who co-founded the National Junior Tennis League in 1969 to expose underprivileged children to tennis while encouraging discipline and focus on academia.

Billie Jean King is a former World No. 1 tennis player who won a record 20 championship titles at Wimbledon. She was the founder of the Women's Tennis Association and played an integral role in pushing for gender equality.

Roger Federer is a Swiss professional tennis player who has won 19 Grand Slam singles titles, the most in the history for a male tennis player. His Foundation raises funds for education programs in southern Africa.

This bold and uplifting mural will activate the garden, beautify this world-class tennis facility, while highlighting the history of tennis in support of the Learning Centre's Programs.

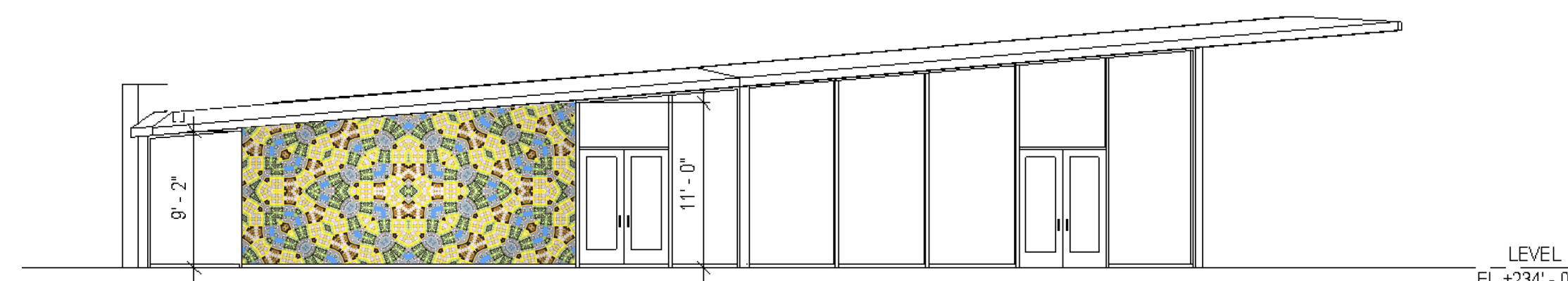


View of the SPIN mural from the garden.

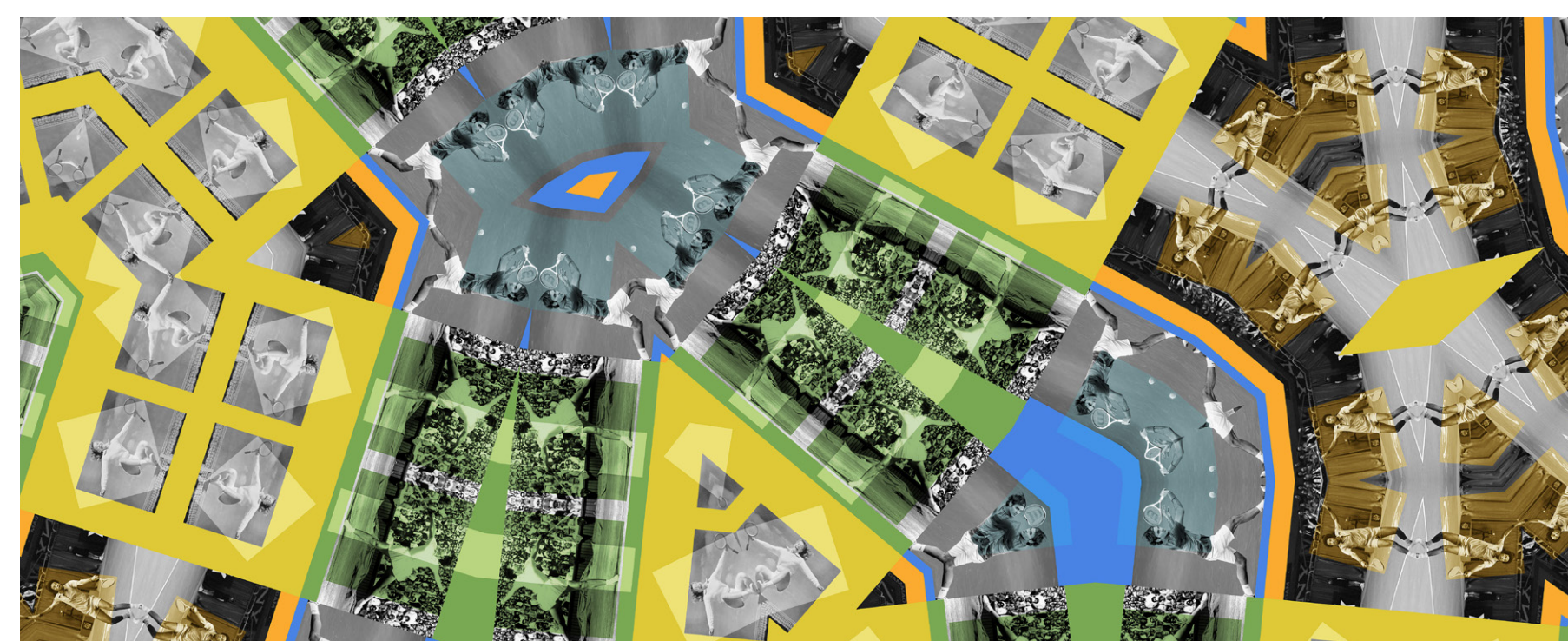


The pattern is created from four images showing: Alice Marble, Arthur Ashe, Billie Jean King, and Roger Federer.

The color palette is inspired by the garden, and the new building's color themes.



The mural is 22'6" long and between 9 and 11' high on the south facade of the Tennis Learning Center.



This photo-based mural will be printed onto ceramic tiles graded for long term outdoor use. The artist will work with Magnolia Editions located in Oakland to reproduce the mural on a series of large rectangular tiles at extremely high fidelity. The tiles will be laid very close together to minimize any break in the imagery.