



**SHEET INDEX**

1	COVER SHEET
2	SITE CONTEXT
3	SITE PHOTOS
4	SITE PHOTOS
5	INTERIOR PHOTOS
6	EXTERIOR ELEVATIONS
7	SITE PLAN - FULL BUILD OUT
8	SITE ELEVATION - FULL BUILD OUT
9	SITE PLAN - PHASE 1 IMPROVEMENTS
10	PROPOSED VIEW
11	PROPOSED VIEW
12	PROPOSED VIEW
13	PROPOSED VIEW
14	SITE PLAN - LIGHTING
15	SITE LIGHTING FIXTURES
16	BUILDING MATERIAL PALETTE
17	SITE MATERIAL PALETTE
18	PLANTING PLAN - TREES
19	PLANTING PLAN - UNDERSTORY
20	PLANT PALETTE - TREES
21	PLANT PALETTE - UNDERSTORY

**GENEVA CAR BARN HISTORY**

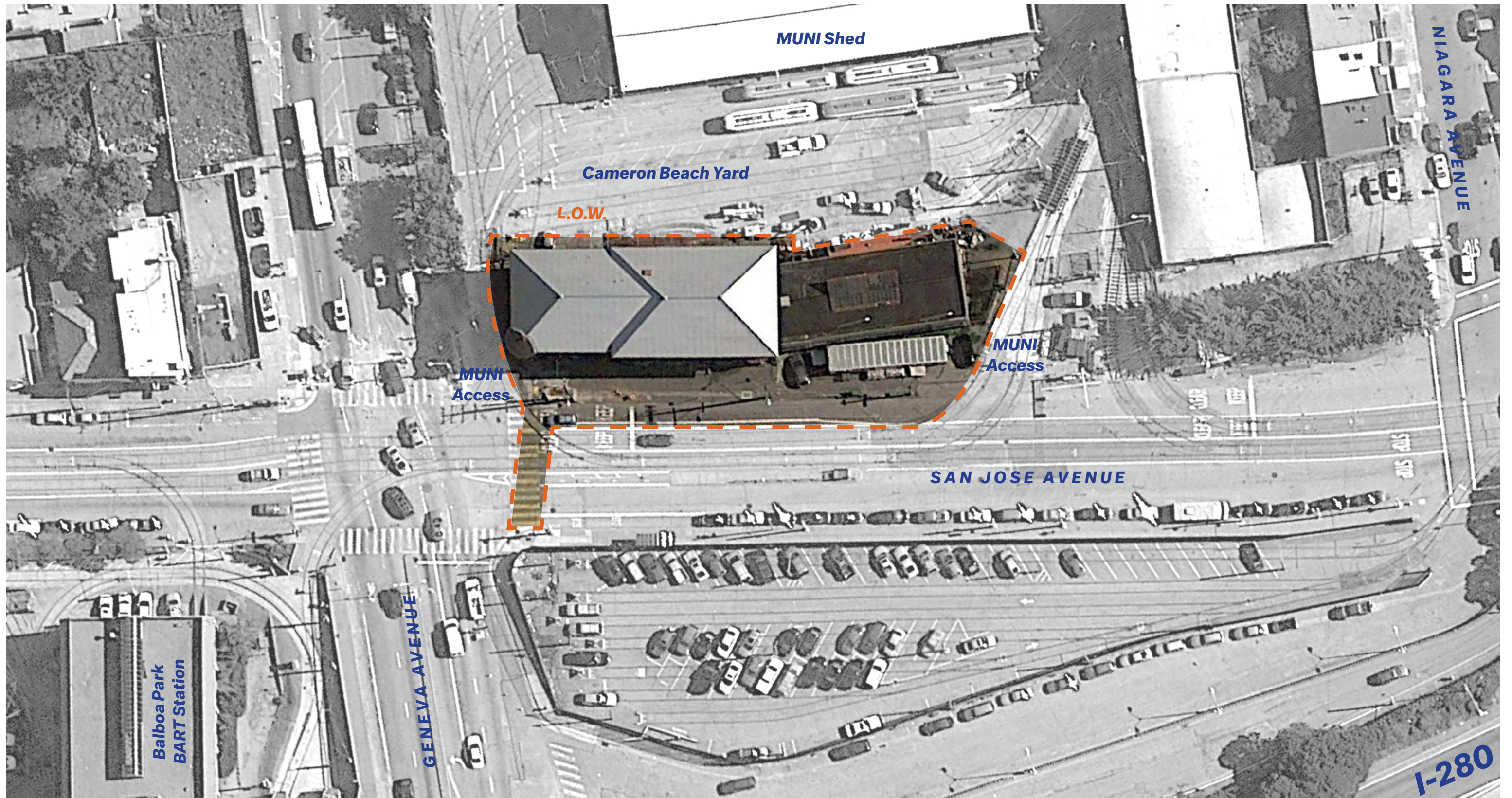
The Geneva Car Barn and Powerhouse was designed by the Reid Brothers in 1901 and 1903 respectively. The building served as a depot for the San Francisco's private railroads, as well as The San Francisco Municipal Railway and remains the last physical reminder of San Francisco's first electric railway. In 1985, the Car Barn was declared a San Francisco city landmark, but after being heavily damaged in the 1989 Loma Prieta earthquake, it was abandoned. In 1998, Muni announced plans to demolish the structure. In response, the Friends of the Geneva Car Barn and Powerhouse was formed as a neighborhood citizens group and succeeded in halting the demolition plans. In 2003, a Stabilization Project for the building was completed which included temporary seismic bracing and a new roof. In 2004, ownership of the building was transferred to the San Francisco Department of Recreation and Parks who, in partnership with the Friends group, developed a specific program for adaptive reuse based on Chicago's award-winning Gallery 37.

In 2010, the Car Barn was listed on the National Register of Historic Places and design work began for the adaptive reuse and restoration of the building to create a youth arts education center, theater and community assembly space. The rehabilitation will preserve and restore the exterior façade and the period-of-significance historic finishes while modifying the interior for code compliance, seismic strengthening and the building's new use as a youth arts education center and community cultural center.

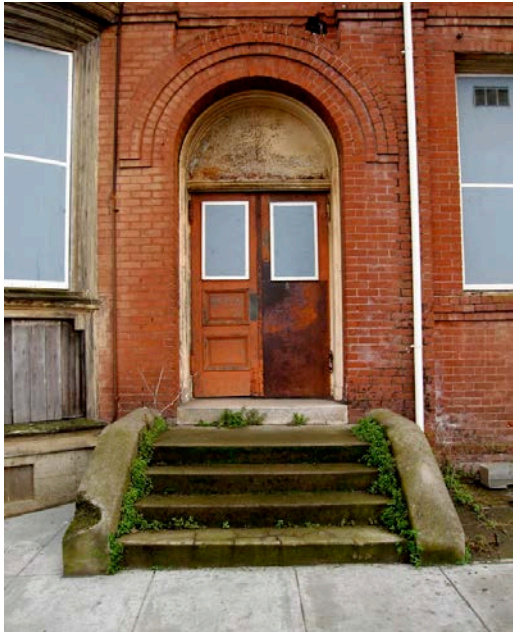
The project is currently starting the Construction Documents phase of design. The construction of the project will be phased; Phase 1 will renovate the Powerhouse and Phase 2 will renovate the Office Building. The project has received SHPO Part 2 approval.







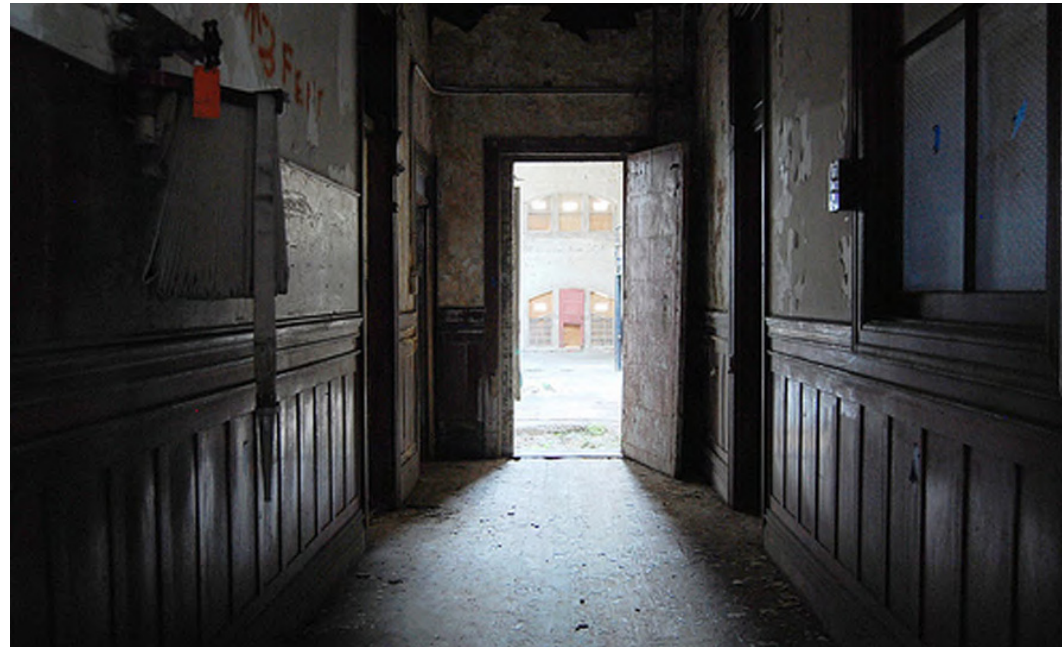








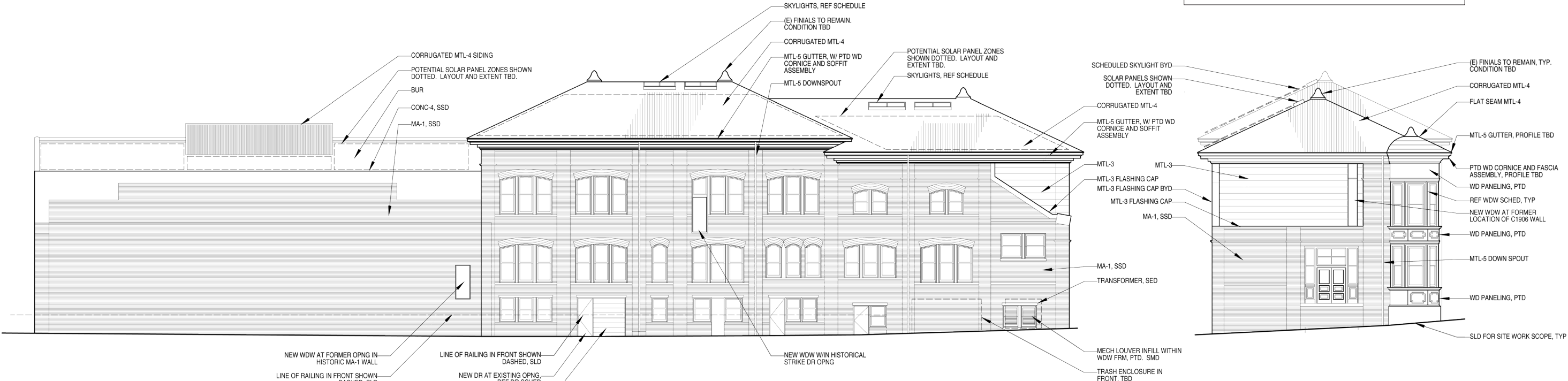






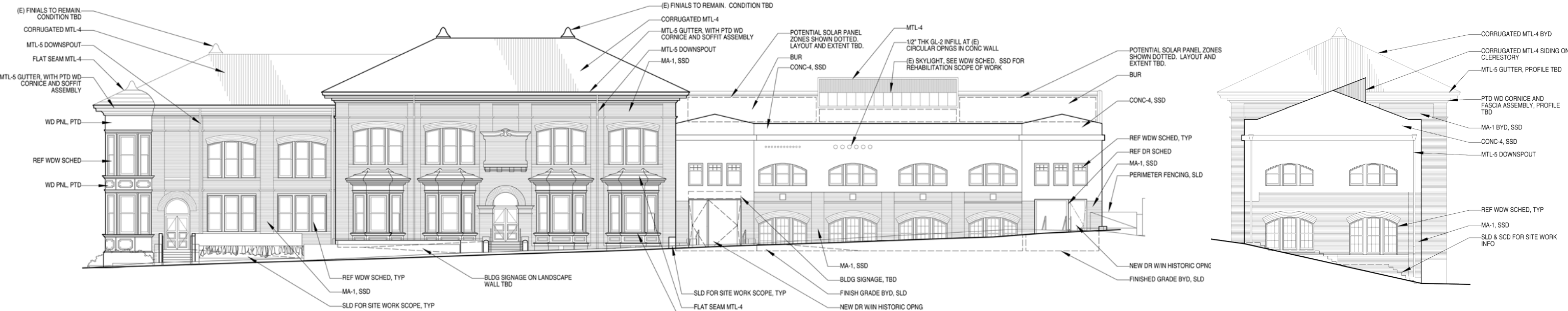
EXTERIOR MATERIAL LEGEND

CONC-4	EXISTING CONCRETE WALL (REF STRUCT)
CONC-5	CONCRETE WALL (REF STRUCT)
MA-1	EXISTING MASONRY WALL
MTL-3	EXTERIOR METAL SIDING
MTL-4	METAL ROOF
MTL-5	METAL GUTTER/ DOWNSPOUT
GL-1	LAMINATED CLEAR GLASS W/ LOW-E INTERLAYER
GL-5	INSULATED GLASS W/ LOW-E COATING
GL-6	INSUATED/ LAMINATED SKYLIGHT GLASS



EAST ELEVATION

NORTH ELEVATION

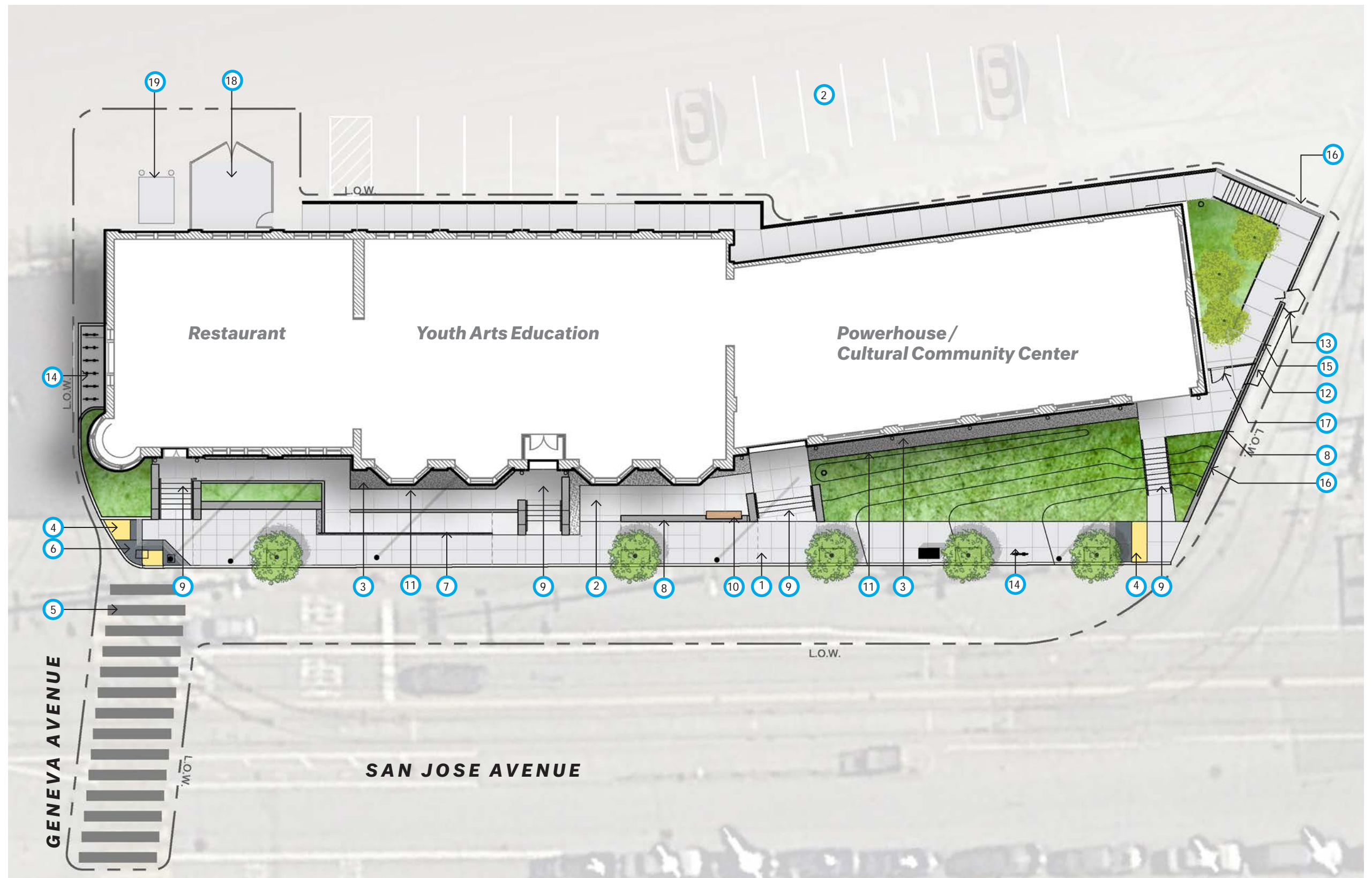


WEST ELEVATION

SOUTH ELEVATION



- ① **Natural Concrete**  
With Saw-Cut Joints
- ② **Muni Parking**
- ③ **Crushed Rock Mulch**
- ④ **Detectable Warning Paving**
- ⑤ **Painted Crosswalk**
- ⑥ **Concrete Curb Ramp**
- ⑦ **Weathered Steel Plate Sign**
- ⑧ **Concrete Seat Wall**
- ⑨ **Concrete Stair**
- ⑩ **Custom Wood Bench**
- ⑪ **Steel Landscape Header**
- ⑫ **(E) Wall to Remain**
- ⑬ **(E) Muni Yard Gate**  
-To remain
- ⑭ **Bike Racks**  
SF city standard bike racks
- ⑮ **Security Fence**  
8'-0" w/ Welded  
Wire Mesh Infill
- ⑯ **Guardrail**  
42" w/Wire mesh infill
- ⑰ **Emergency Egress Gate**
- ⑱ **Recycle/Trash Enclosure**
- ⑲ **Transformer**

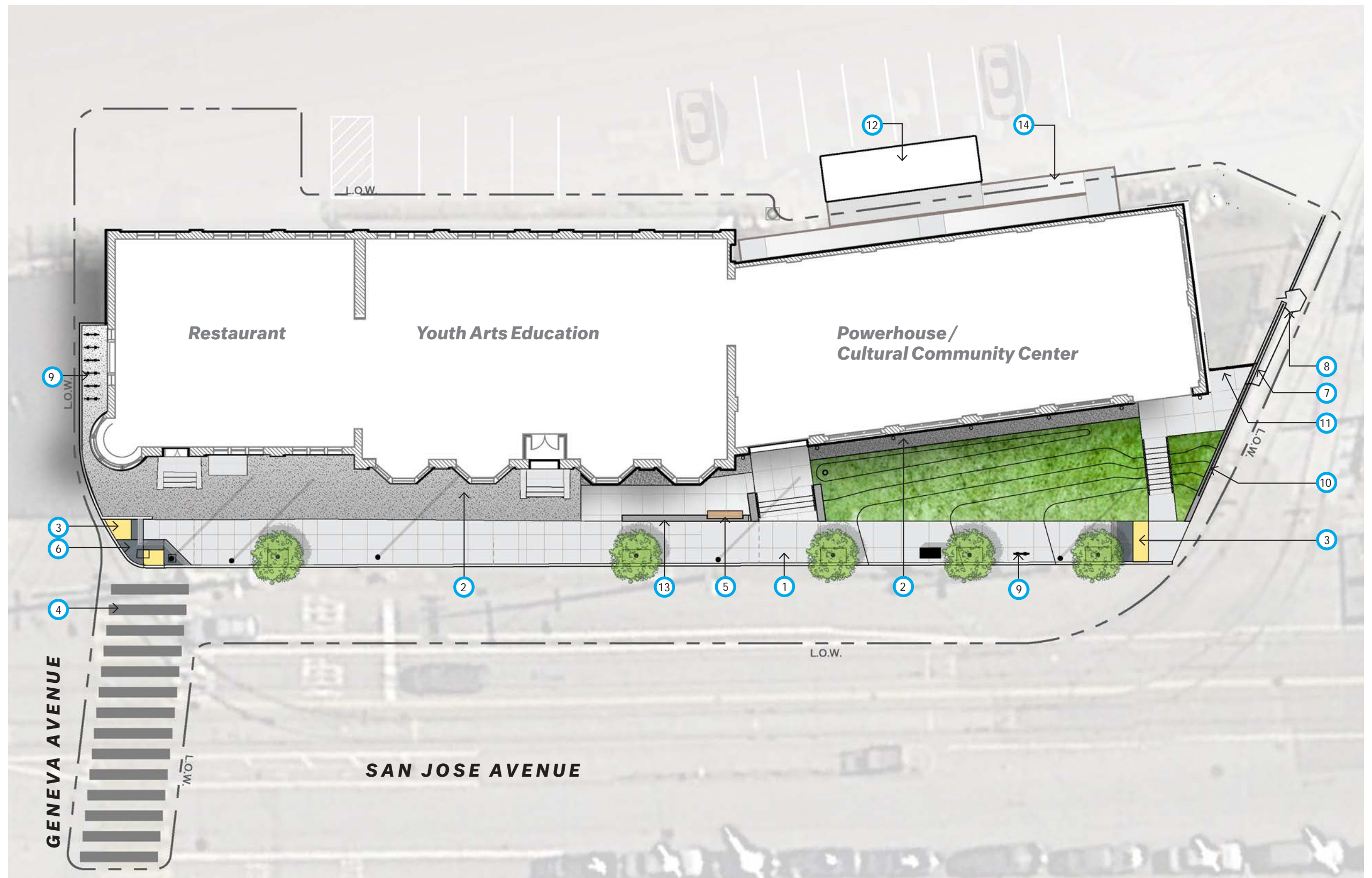








- ① **Natural Concrete**  
with saw-cut joints
- ② **Crushed Rock Mulch**
- ③ **Detectable Warning Paving**
- ④ **Painted Crosswalk**
- ⑤ **Custom Wood Bench**
- ⑥ **Concrete Curb Ramp**
- ⑦ **(E) Wall to Remain**
- ⑧ **(E) Muni Yard Gate**  
To remain
- ⑨ **Bike Racks**  
SF city standard bike racks
- ⑩ **Guardrail**  
42" w/ Wire mesh infill
- ⑪ **(E) Muni Yard Fence**  
To remain
- ⑫ **Temporary Restroom**
- ⑬ **Concrete Seat Wall**
- ⑭ **Temporary Accessible Ramp**













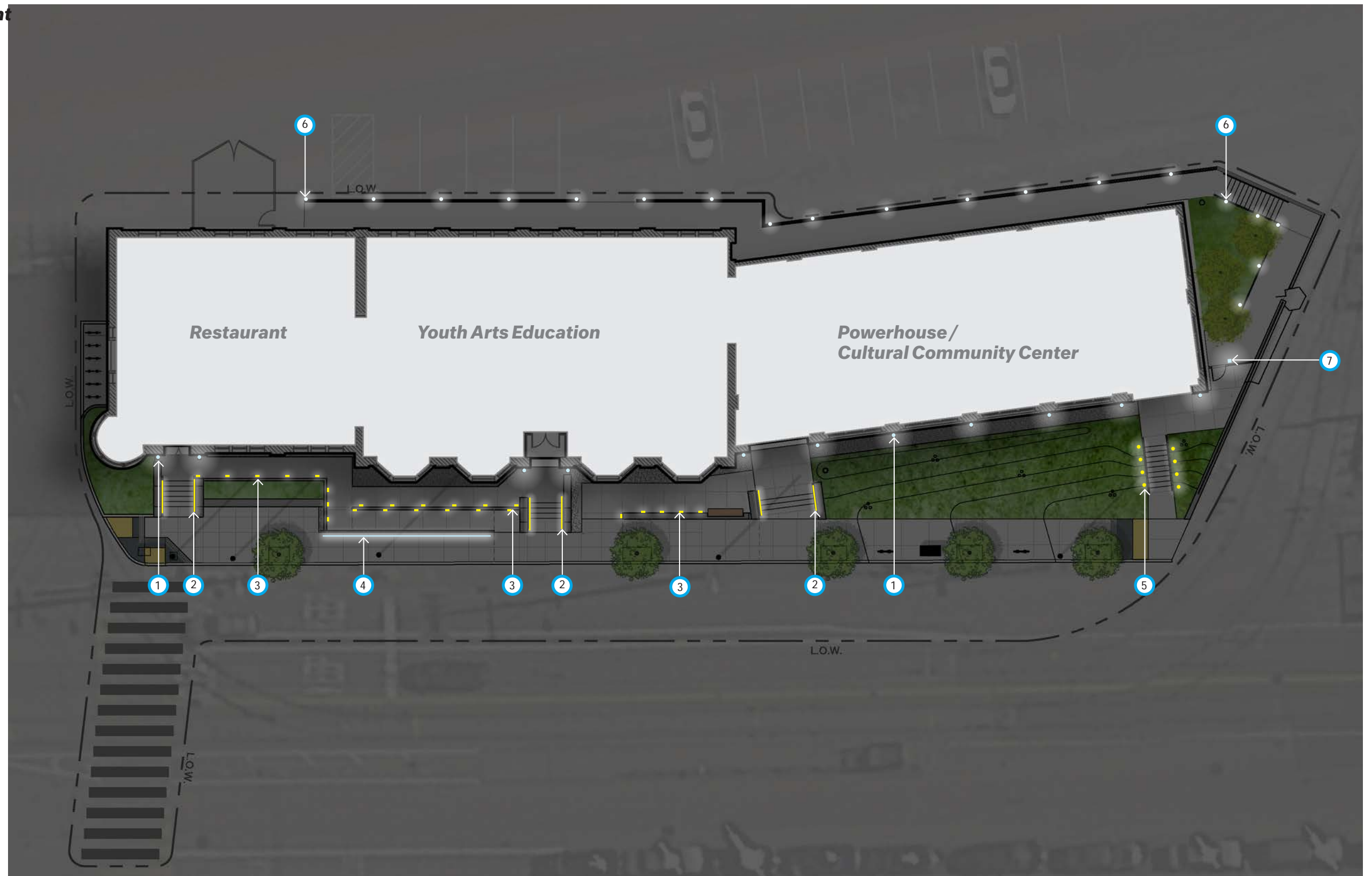








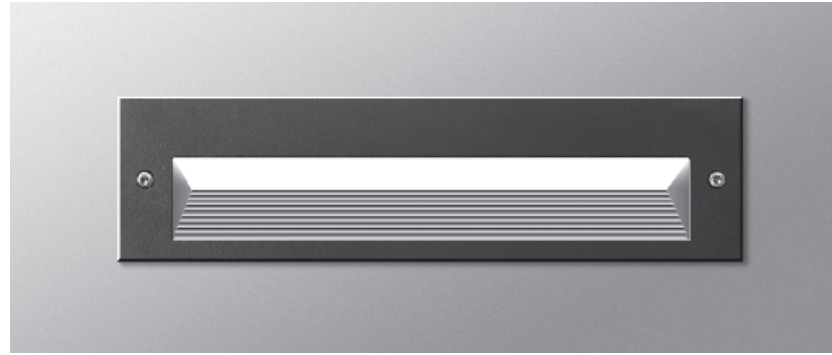
- ① In-Ground Building Up Light
- ② Handrail Light
- ③ Recessed Wall Pathlight
- ④ In-Ground Linear Up Light
- ⑤ Pathlight Post
- ⑥ Bollard Light
- ⑦ Wall Sconce







7 **Wall Scone**  
X4 by a-light



3 **Recessed Wall Pathlight**  
2384 LED by Bega



1 **In-Ground Building Up Light**  
HP2 by BKSSL



6 **Bollard Light**  
X1 by a-light



5 **Pathlight Post**  
Glow Star by BKSSL



4 **In-Ground Linear Up Light**  
Lumenfacade by Lumenpulse



2 **Handrail Light**  
LR6 LED by Cole



*Office Building - Corrugated Roof Color*



- *Powerhouse - New Metal Entry Storefront and Metal Surround*
- *Office Building - Aluminum Panels at c1906 Wall*



*Painted Sheet Metal Downspout, Bay Window Metal Roofing, Metal Railing Color*

*Office Building Brick Color (For General Reference only,  
Not Accounting For Natural Color Variations)*







*Saw-Cut Natural Concrete*



*Security Fence and Gate- Amopanel by Ametco- color black*



*Crushed Rock Mulch- Black Basalt*



*Bike Rack Welle by Palmer Group*



*Weathered Steel Sign (by others)*

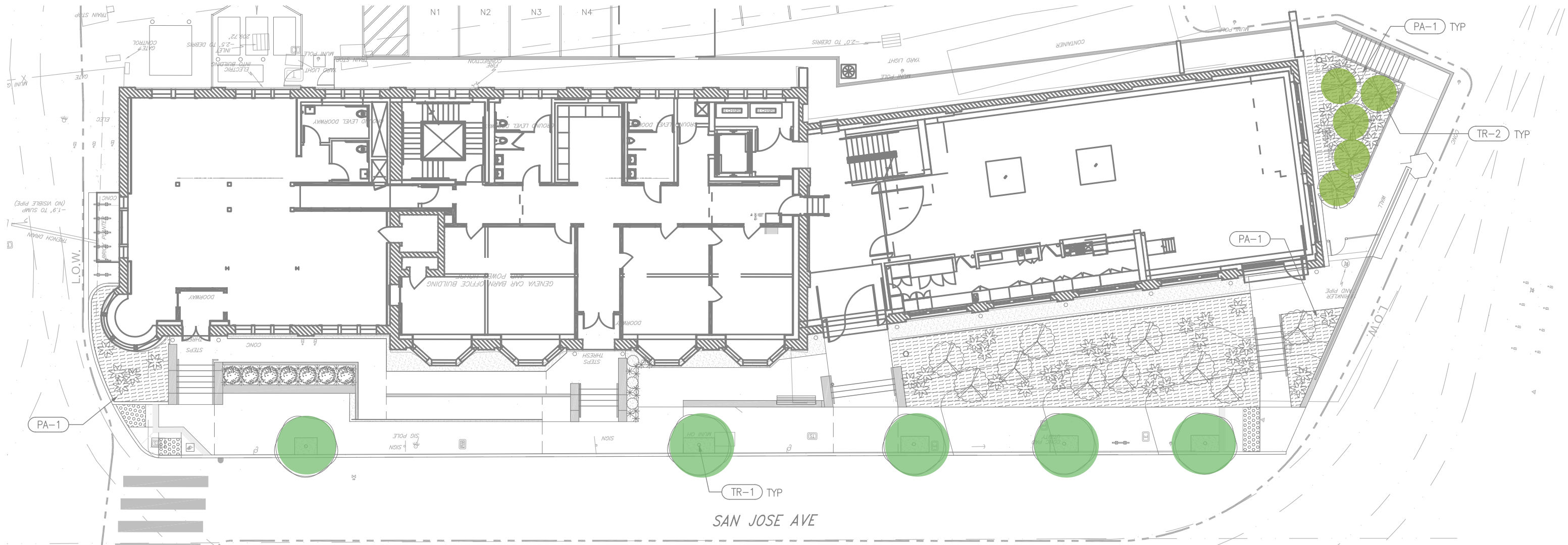


*Western Red Cedar Bench*



*Painted Steel Plate Curb (Custom Tnemec paint color)*





PLANTING SCHEDULE

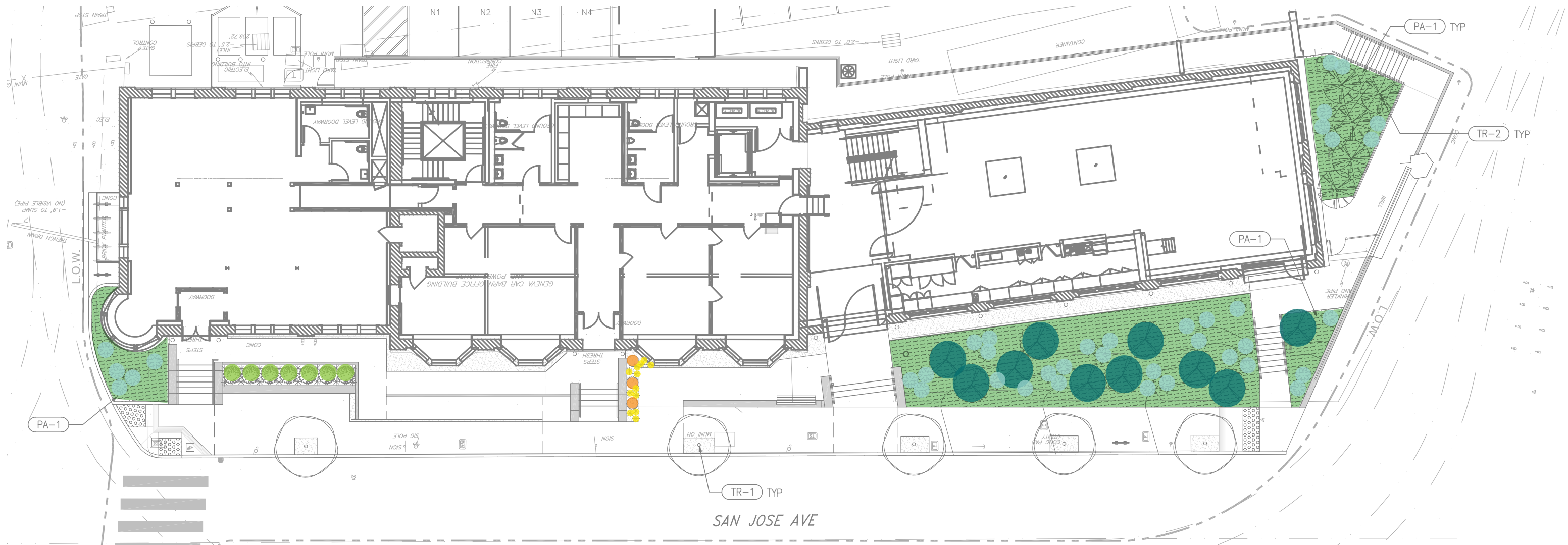
TYPE	SYMBOL	TAG	LATIN NAME	COMMON NAME	SIZE	SPACING	QUANT. / AREA	NOTES
TREES		TR-1	<i>Tristaniopsis laurina</i> 'Elegant'	ELEGANT BRISBANE BOX	24" BOX	PER PLAN	5	
		TR-2	<i>Hakea suaveolens</i>	SWEET HAKEA	24" BOX	PER PLAN	5	

PLANTING SCHEDULE

TYPE	SYMBOL	TAG	LATIN NAME	COMMON NAME	SIZE	SPACING	QUANT. / AREA	NOTES
GROUND COVER		PA-1	<i>Ceanothus griseus</i> var. <i>horizontalis</i> 'Yankee Point'	CARMEL MOUNTAIN LILAC	1 GAL.	36"	1,700 SF	65% OF AREA
			<i>Fragaria chiloensis</i> 'Carole Anne'	COAST STRAWBERRY	1 GAL.	18"		25% OF AREA
			<i>Eriogonum latifolium</i>	COAST BUCKWHEAT	1 GAL.	18"		15% OF AREA
SHRUBS, GRASSES, & SUCCULENTS		LEU SAF	<i>Leucadendron</i> 'Safari Goldstrike'	YELLOW CONE BUSH	15 GAL.	PER PLAN	18	NO PHOSPHOROUS (P) ADDITIVES TO SOIL
		ARC DEN	<i>Arctostaphylos densiflora</i> 'Howard McMinn'	MANZANITA	15 GAL.	PER PLAN	11	
		AGA AME	<i>Agave americana</i>	CENTURY PLANT	5 GAL.	PER PLAN	39	
		AGA SHA	<i>Agave shawii</i> x <i>attenuata</i> 'Blue Flame'	BLUE FLAME AGAVE	5 GAL.	PER PLAN	3	
		ALO BLU	<i>Aloe</i> 'Blue Elf'	BLUE ELF ALOE	1 GAL.	PER PLAN	29	







PLANTING SCHEDULE								
TYPE	SYMBOL	TAG	LATIN NAME	COMMON NAME	SIZE	SPACING	QUANT. / AREA	NOTES
TREES		TR-1	<i>Tristaniopsis laurina</i> 'Elegant'	ELEGANT BRISBANE BOX	24" BOX	PER PLAN	5	
		TR-2	<i>Hakea suaveolens</i>	SWEET HAKEA	24" BOX	PER PLAN	5	

PLANTING SCHEDULE									
TYPE	SYMBOL	TAG	LATIN NAME	COMMON NAME	SIZE	SPACING	QUANT. / AREA	NOTES	
GROUND COVER		PA-1	<i>Ceanothus griseus</i> var. <i>horizontalis</i> 'Yankee Point'	CARMEL MOUNTAIN LILAC	1 GAL.	36"	1,700 SF	65% OF AREA	
			<i>Fragaria chiloensis</i> 'Carole Anne'	COAST STRAWBERRY	1 GAL.	18"		25% OF AREA	
			<i>Eriogonum latifolium</i>	COAST BUCKWHEAT	1 GAL.	18"		15% OF AREA	
SHRUBS, GRASSES, & SUCCULENTS		LEU SAF	<i>Leucadendron</i> 'Safari Goldstrike'	YELLOW CONE BUSH	15 GAL.	PER PLAN	18	NO PHOSPHOROUS (P) ADDITIVES TO SOIL	
		ARC DEN	<i>Arctostaphylos densiflora</i> 'Howard McMinn'	MANZANITA	15 GAL.	PER PLAN	11		
		AGA AME	<i>Agave americana</i>	CENTURY PLANT	5 GAL.	PER PLAN	39		
		AGA SHA	<i>Agave shawii</i> x <i>attenuata</i> 'Blue Flame'	BLUE FLAME AGAVE	5 GAL.	PER PLAN	3		
		ALO BLU	<i>Aloe</i> 'Blue Elf'	BLUE ELF ALOE	1 GAL.	PER PLAN	29		





Tree Planting



*Tristaniopsis laurina* 'Elegant' (Elegant Brisbane Box) - San Jose Avenue Street Tree



*Lyonothamnus floribundus* subsp. *aspenfolius* (Catalina Ironwood)--South Facade MUNI Yard Screen



PA-1- Planting Mix



*Arctostaphylos densiflora* 'Howard McMinn'  
Manzanita



*Fragaria chiloensis* 'Carole Ann'  
Coast Strawberry



*Eriogonum latifolium*  
Coast Buckwheat



*Ceanothus griseus* var. *horizontalis* 'Yankee Point'  
Carmel Mountain Lilac

Accent Shrubs and Succulents



*Leucadendron* 'Safari Goldstrike'  
Yellow Cone Bush



*Aloe* 'Blue Elf'  
Blue Elf Aloe



*Agave americana*  
American Aloe - Century Plant



*Agave shawii* x *attenuata* 'Blue Flame'  
Blue Flame Agave