



VIEW OF CAMPUS ENTRY
 RENDERINGS ARE INCLUDED FOR ILLUSTRATION OF DESIGN INTENT ONLY.

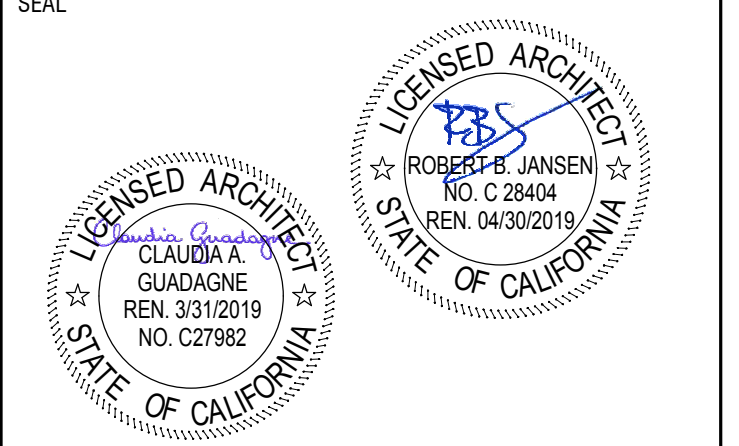
SFO

San Francisco International Airport

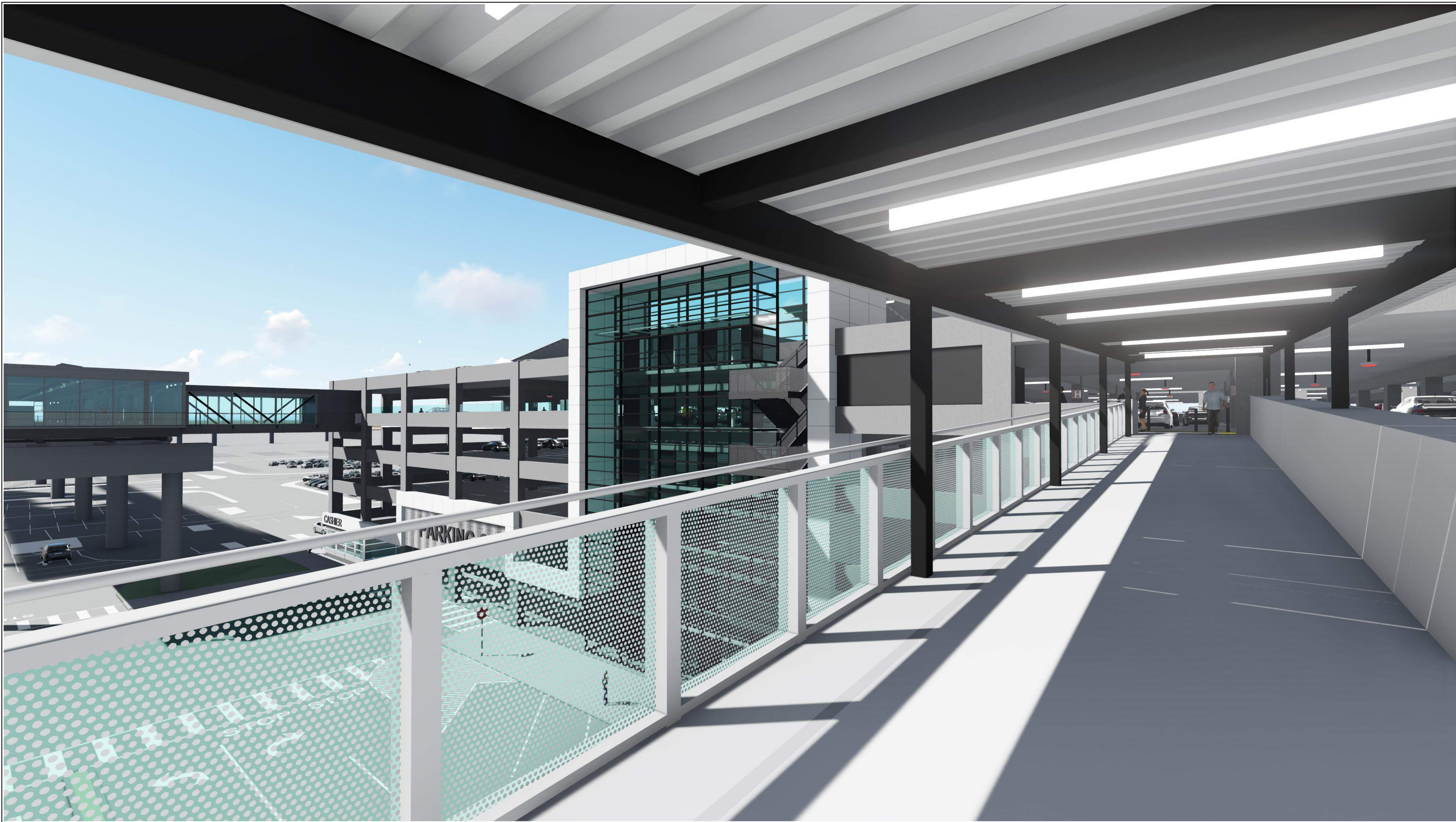


NO	DATE	REVISIONS	BY
	02/17/17	100% DESIGN DEVELOPMENT R1	
	05/15/17	ISSUED FOR BID (90% CONSTRUCTION DOCUMENTS)	
	06/28/17	100% CONSTRUCTION DOCUMENTS	
1	08/09/17	ISSUED FOR CONSTRUCTION	

CONTRACT NO. **9273.66**
 PROJECT TITLE **LONG TERM PARKING GARAGE NO. 2**
 SHEET TITLE **EXTERIOR RENDERING**



APPROVED:	DEPUTY AIRPORT DIRECTOR
APPROVED:	PRINCIPAL ARCHITECT/ENGINEER
DESIGNED BY:	CHECKED BY:
KH-FMG	RBJ
DRAWN BY:	DATE:
KH-FMG	08/09/17
SCALE:	SIZE:
AS NOTED	ANSI-D
SHEET NUMBER	
A03.0.50	



VIEW OF PEDESTRIAN WALKWAY
 RENDERINGS ARE INCLUDED FOR ILLUSTRATION OF DESIGN INTENT ONLY.

SFO

San Francisco International Airport



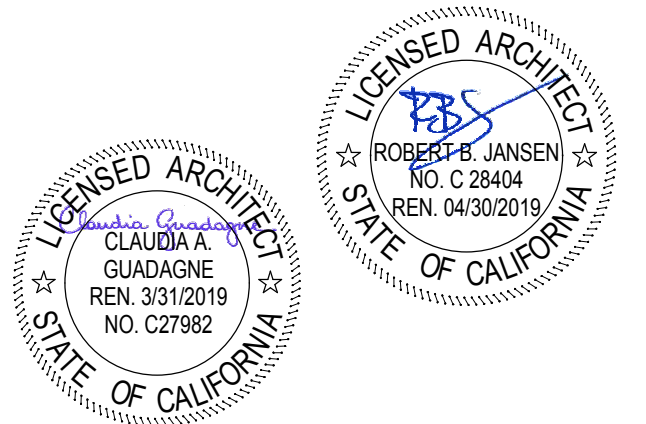
NO	DATE	REVISIONS	BY
		Revision Description	
09/07/16		100% SCHEMATIC DESIGN	
10/29/16		100% DESIGN DEVELOPMENT	
02/17/17		100% DESIGN DEVELOPMENT R1	
05/15/17		ISSUED FOR BID (90% CONSTRUCTION DOCUMENTS)	
06/28/17		100% CONSTRUCTION DOCUMENTS	
08/09/17		ISSUED FOR CONSTRUCTION	
1			

CONTRACT NO.
9273.66

PROJECT TITLE
**LONG TERM PARKING GARAGE
 NO. 2**

SHEET TITLE
EXTERIOR RENDERING

SEAL



APPROVED:
 DEPUTY AIRPORT DIRECTOR
 APPROVED:
 PRINCIPAL ARCHITECT/ENGINEER

DESIGNED BY: KH-FMG	CHECKED BY: RBJ
DRAWN BY: KH-FMG	DATE: 08/09/17
SCALE: AS NOTED	SIZE: ANSI-D

SHEET NUMBER
A03.0.51



VIEW OF AMENITY STOREFRONT AT EAST BOULEVARD
 RENDERINGS ARE INCLUDED FOR ILLUSTRATION OF DESIGN INTENT ONLY.

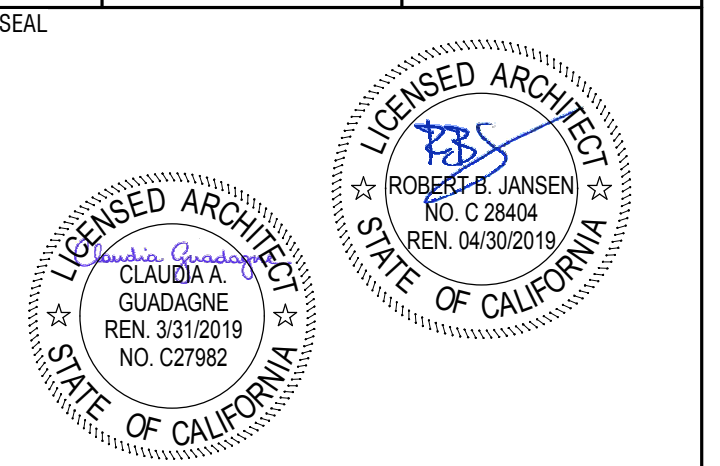
SFO

San Francisco International Airport



NO	DATE	REVISIONS	BY
	02/17/17	100% DESIGN DEVELOPMENT R1	
	05/15/17	ISSUED FOR BID (90% CONSTRUCTION DOCUMENTS)	
	06/28/17	100% CONSTRUCTION DOCUMENTS	
1	08/09/17	ISSUED FOR CONSTRUCTION	

CONTRACT NO.	9273.66
PROJECT TITLE	LONG TERM PARKING GARAGE NO. 2
SHEET TITLE	EXTERIOR RENDERING



APPROVED:	DEPUTY AIRPORT DIRECTOR
APPROVED:	PRINCIPAL ARCHITECT/ENGINEER
DESIGNED BY:	CHECKED BY:
KH-FMG	RBJ
DRAWN BY:	DATE:
KH-FMG	08/09/17
SCALE:	SIZE:
AS NOTED	ANSI-D

SHEET NUMBER
A03.0.52



VIEW OF GARAGE VEHICULAR ENTRY
 RENDERINGS ARE INCLUDED FOR ILLUSTRATION OF DESIGN INTENT ONLY.

SFO

San Francisco International Airport



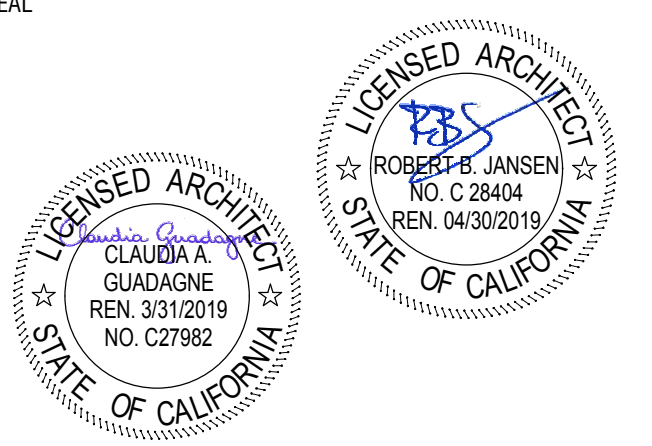
NO	DATE	Revision Description	BY
	02/17/17	100% DESIGN DEVELOPMENT R1	
	05/15/17	ISSUED FOR BID (90% CONSTRUCTION DOCUMENTS)	
	06/28/17	100% CONSTRUCTION DOCUMENTS	
1	08/09/17	ISSUED FOR CONSTRUCTION	

CONTRACT NO.
9273.66

PROJECT TITLE
**LONG TERM PARKING GARAGE
 NO. 2**

SHEET TITLE
EXTERIOR RENDERING

SEAL



APPROVED:	
DEPUTY AIRPORT DIRECTOR	
APPROVED:	
PRINCIPAL ARCHITECT/ENGINEER	
APPROVED:	
DESIGNED BY:	CHECKED BY:
KH-FMG	RBJ
DRAWN BY:	DATE:
KH-FMG	08/09/17
SCALE:	SIZE:
AS NOTED	ANSI-D

SHEET NUMBER
A03.0.53



VIEW OF SOUTH PEDESTRIAN ENTRY AND SHUTTLE DROP-OFF
 RENDERINGS ARE INCLUDED FOR ILLUSTRATION OF DESIGN INTENT ONLY.

SFO

San Francisco International Airport



NO	DATE	REVISIONS	BY
1	08/09/17	100% CONSTRUCTION DOCUMENTS ISSUED FOR CONSTRUCTION	

CONTRACT NO.
9273.66

PROJECT TITLE
LONG TERM PARKING GARAGE NO. 2

SHEET TITLE
EXTERIOR RENDERING

SEAL

APPROVED:	DEPUTY AIRPORT DIRECTOR
APPROVED:	PRINCIPAL ARCHITECT/ENGINEER
DESIGNED BY:	CHECKED BY:
KH-FMG	RBJ
DRAWN BY:	DATE:
KH-FMG	08/09/17
SCALE:	SIZE:
AS NOTED	ANSI-D

SHEET NUMBER
A03.0.54



VIEW OF WEST FACADE
 RENDERINGS ARE INCLUDED FOR ILLUSTRATION OF DESIGN INTENT ONLY.

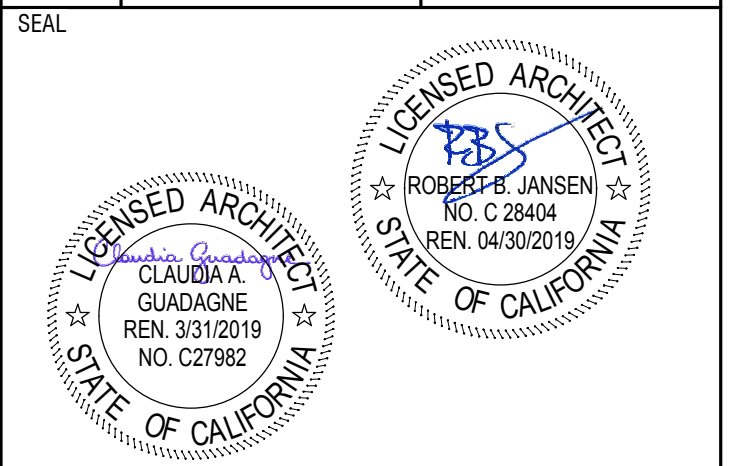
SFO

San Francisco International Airport



NO	DATE	REVISIONS	BY
	06/28/17	100% CONSTRUCTION DOCUMENTS	

CONTRACT NO. 9273.66	PROJECT TITLE LONG TERM PARKING GARAGE NO. 2	SHEET TITLE EXTERIOR RENDERING
--------------------------------	--	--



APPROVED:	DEPUTY AIRPORT DIRECTOR
APPROVED:	PRINCIPAL ARCHITECT/ENGINEER
DESIGNED BY:	CHECKED BY:
KH-FMG	RBJ
DRAWN BY:	DATE:
KH-FMG	08/09/17
SCALE:	SIZE:
AS NOTED	ANSI-D
SHEET NUMBER A03.0.55	



INTERIOR VIEWS OF L5 ELEVATOR LOBBY
 RENDERINGS ARE INCLUDED FOR ILLUSTRATION OF DESIGN INTENT ONLY.

SFO

San Francisco International Airport



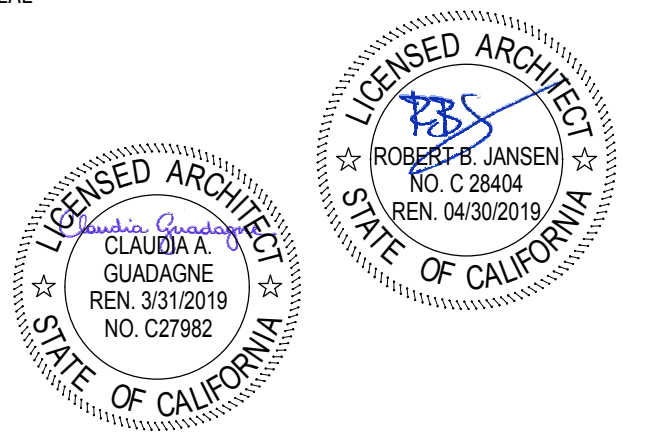
NO	DATE	Revision Description	BY
	02/17/17	100% DESIGN DEVELOPMENT R1	
	05/15/17	ISSUED FOR BID (90% CONSTRUCTION DOCUMENTS)	
	06/28/17	100% CONSTRUCTION DOCUMENTS	
1	08/09/17	ISSUED FOR CONSTRUCTION	

CONTRACT NO.
9273.66

PROJECT TITLE
**LONG TERM PARKING GARAGE
NO. 2**

SHEET TITLE
INTERIOR RENDERING

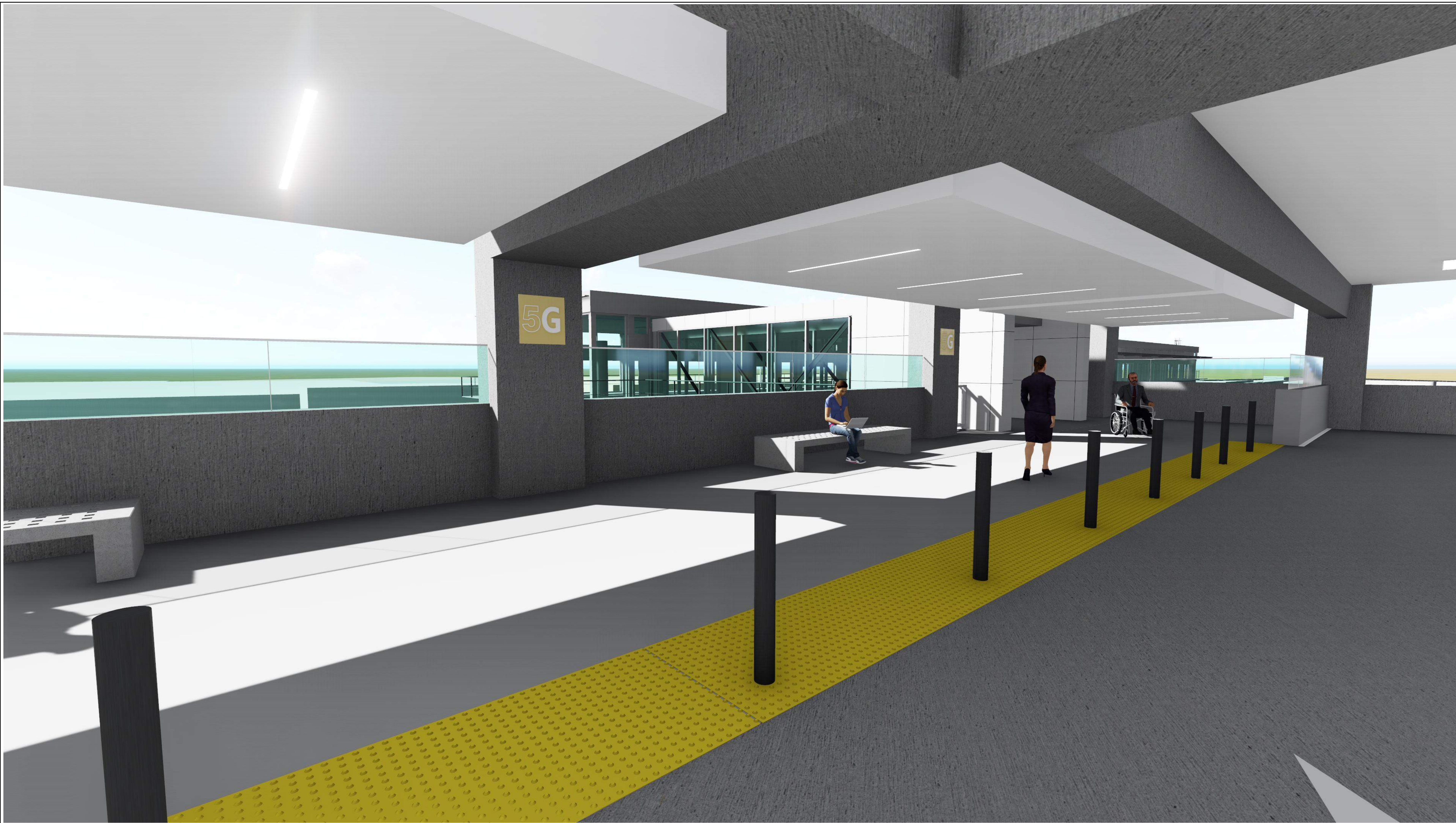
SEAL



APPROVED:
DEPUTY AIRPORT DIRECTOR
 APPROVED:
PRINCIPAL ARCHITECT/ENGINEER

DESIGNED BY: KH-FMG	CHECKED BY: RBJ
DRAWN BY: KH-FMG	DATE: 08/09/17
SCALE: AS NOTED	SIZE: ANSI-D

SHEET NUMBER
A09.1.01



INTERIOR VIEWS OF L5 TOWARD AIRTRAIN
 RENDERINGS ARE INCLUDED FOR ILLUSTRATION OF DESIGN INTENT ONLY.

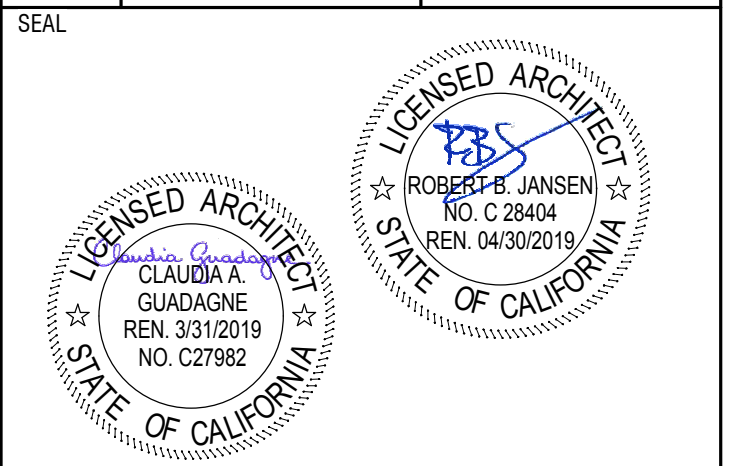
SFO

San Francisco International Airport



NO	DATE	REVISIONS	Revision Description	BY
	02/17/17		100% DESIGN DEVELOPMENT R1	
	05/15/17		ISSUED FOR BID (90% CONSTRUCTION DOCUMENTS)	
	06/28/17		100% CONSTRUCTION DOCUMENTS	
1	08/09/17		ISSUED FOR CONSTRUCTION	

CONTRACT NO. 9273.66	PROJECT TITLE LONG TERM PARKING GARAGE NO. 2	SHEET TITLE INTERIOR RENDERING
--------------------------------	--	--



APPROVED:	
DEPUTY AIRPORT DIRECTOR	
APPROVED:	
PRINCIPAL ARCHITECT/ENGINEER	
APPROVED:	
DESIGNED BY:	CHECKED BY:
KH-FMG	RBJ
DRAWN BY:	DATE:
KH-FMG	08/09/17
SCALE:	SIZE:
AS NOTED	ANSI-D
SHEET NUMBER	
A09.1.02	

SFO LTPG 2

Finalists

Larry Bell / Jim Campbell / Johanna Grawunder/
Jennifer Steinkamp / Diana Thater





























